



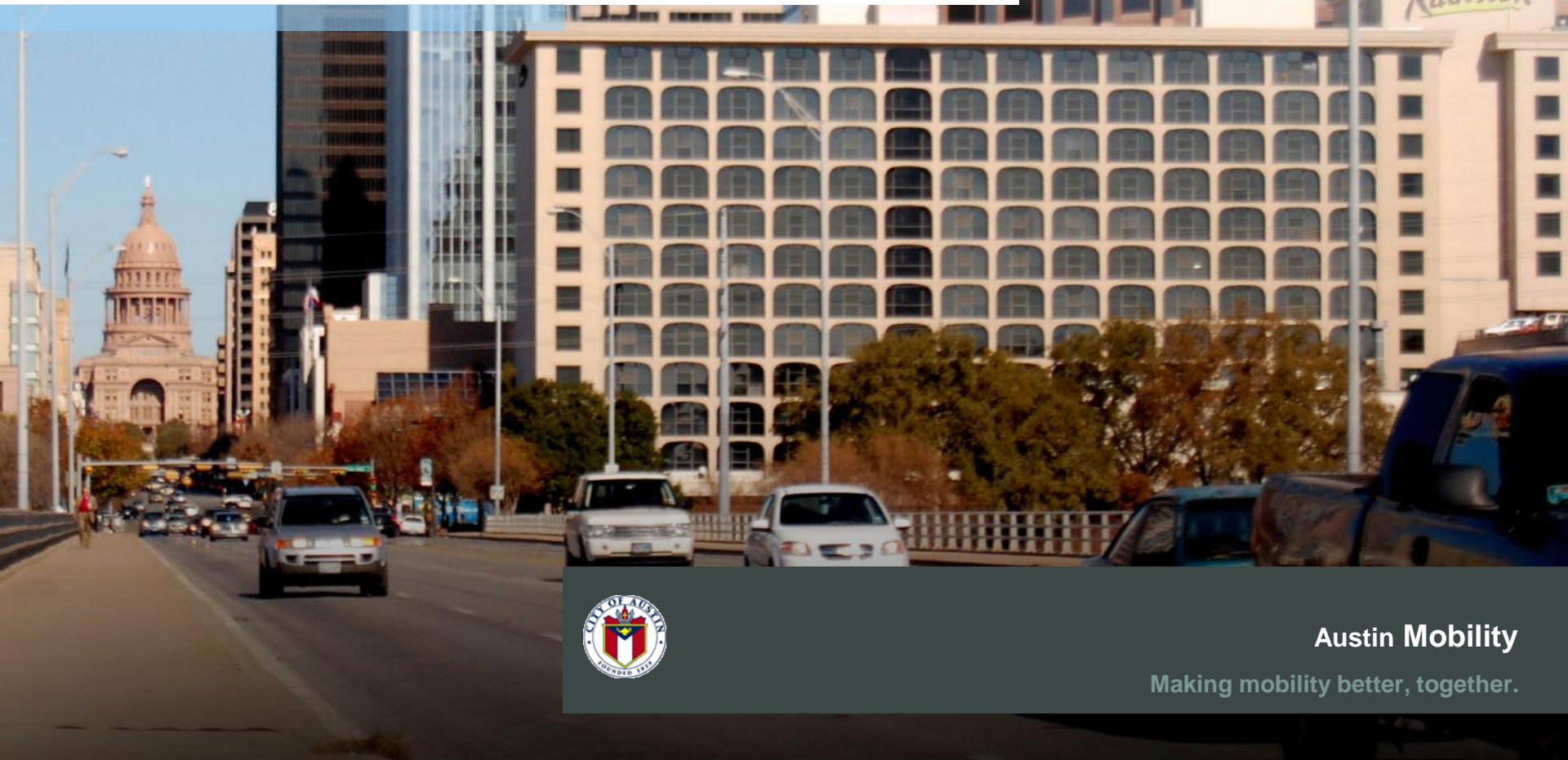
# AUSTIN MOBILITY

## PARKING AND TRANSPORTATION MANAGEMENT DISTRICTS

MUELLER AND EAST AUSTIN PILOTS

11.13.14

CREATED FOR THE URBAN TRANSPORTATION COMMISSION



**Austin Mobility**

Making mobility better, together.

# COA PARKING TOOLS BACKGROUND

## Existing Ordinances

- Parking Benefits District (PBD)
- Residential Parking Permit (RPP)

## Need

- Comprehensive tool - mixed-use commercial areas
- Council Resolution – May 22, 2014
  - Passed on Consent Agenda
  - Council Agenda – December 11, 2014



*Council Resolution directed the City Manager to build on the work already started at Mueller and continue to work with area stakeholders to create a Parking and Transportation Management District for Mueller*

# PTMD DEFINITION

## PARKING AND TRANSPORTATION MANAGEMENT DISTRICT

***A PTMD is a defined geographic area that may include a mix of retail, entertainment, commercial, medical, educational, civic and residential uses.***

- Minimum 100 new on-street or 200 paid public off-street spaces

**A percentage of funds from paid public parking within the district is used for projects that confer public benefits within the district.**

- 51% of the net proceeds goes to the PTMD district





# POTENTIAL PTMD REVENUE PROJECTS

## Eligible improvements might include:

- Park Maintenance and Improvements
- Signage and wayfinding
- Public Right of Way Sidewalk, Landscaping, Street Furniture, Lighting improvements
- Increased District Maintenance
- Public Art



Mueller Lake Park



Credit: Tampa's Parking Dept.



COA Great Streets



Credit: COA AIPP

## Parking

- Paid parking with revenue profit-sharing for district improvements
- Residential Parking Permits
- Coordination of shared parking (office & retail)
- Management for safety and visibility (e.g. Designating No Parking spaces)

## Monitoring/Enforcement

- ATD and/or APD

## Designation of On-Street Zones

- Paid or short-term parking
- Customer / Commercial Service
- Valet
- Car sharing
- Ground Transportation (taxi, bus, pedicab)
- Bus loading/unloading





# MUELLER PTMD APPLICATION



# MUELLER PTMD: BOUNDARY





# MUELLER PTMD: REQUIREMENTS

## Requirements

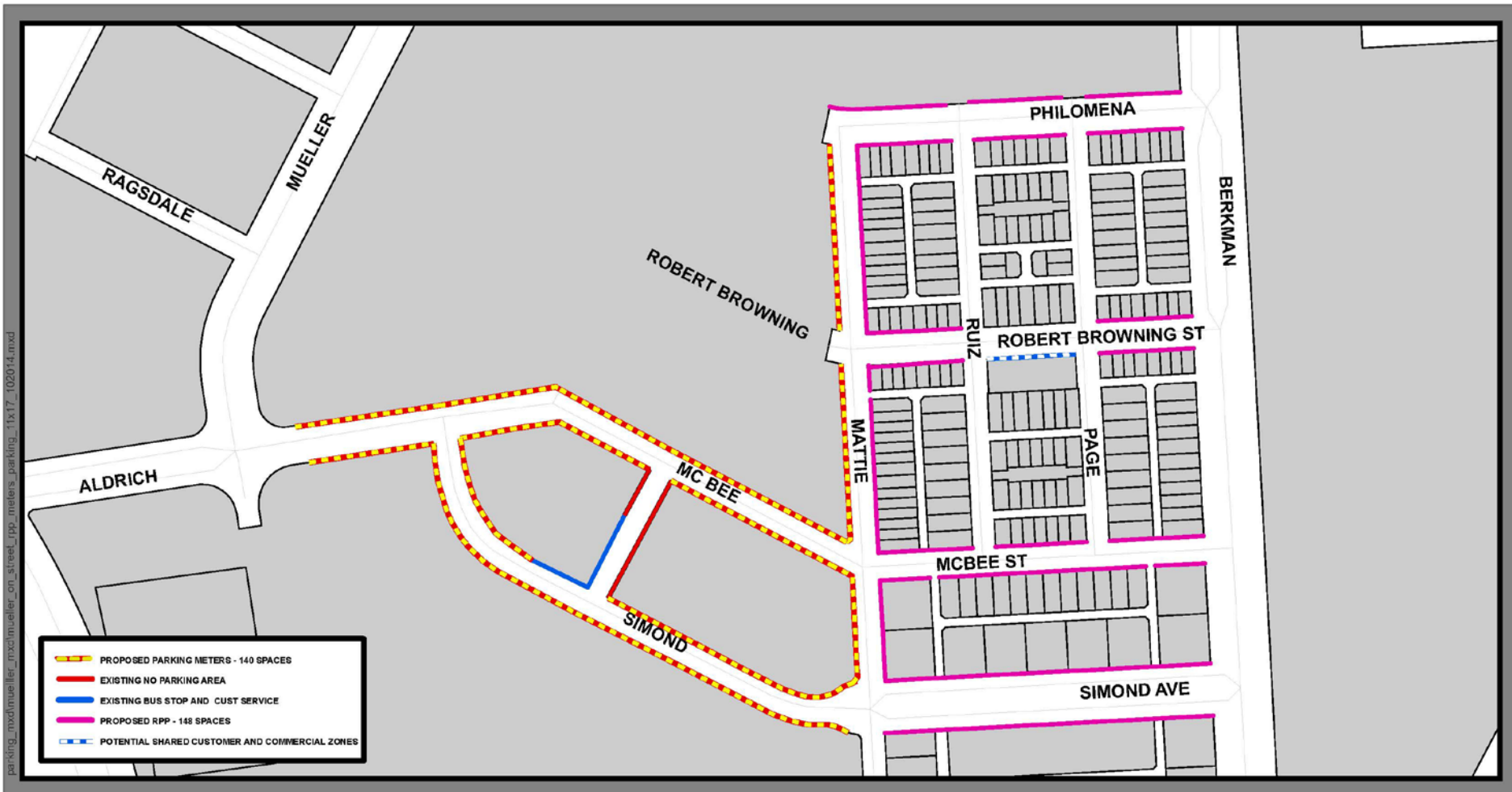
- = / > 100 new on-street or 200 paid public off-street spaces
- Map showing boundaries of District
- List/Map showing Proposed On- and Off-Street Paid Public Parking
- Parking Proforma
- Proposed Tools
- Proposed Improvement Projects
- Oversight Committee
- Stakeholder Outreach meetings
- Letters of Recommendation

## Requirements Met

- ✓ 140 on-street spaces
- ✓ Map Provided
- ✓ Map Provided
- ✓ Compiled by Staff
- ✓ List provided of existing and new
- ✓ List identified
- ✓ Organizations and Contacts identified
- ✓ Process detailed in application
- ✓ In process



# MUELLER PTMD: INITIAL IMPLEMENTATION



*Initial Areas Recommended for Residential Permit Parking (RPP) and Paid On-Street Parking*



AUSTIN MOBILITY

Making mobility better, together.

11.13.2014 / PRESENTED RMMA PIAC



# MUELLER PTMD: PARKING PROFORMA

## Parking Proforma Compiled by Staff

Mueller Revenue and Expenses Estimate	
PTMD Proforma 2015	
Total Projected Meter Revenue	\$150,920
Estimated City Expenses	\$85,607
Net Profit	\$65,313
<b>Mueller PTMD @ 51%</b>	<b>\$33,310</b>
COA @ 49%	\$32,003





# MUELLER PTMD IMPLEMENTATION

## Next Steps:

- RMMA PIAC: November 13, 2014
- UTC: November 13, 2014
- City Council: December 11, 2014
  
- RPP implementation: Projected Q1 2015
- Parking Meter Installation: Projected Q2 2015

## Email Parking Questions or Concerns:

[parking@austintexas.gov](mailto:parking@austintexas.gov)

Put “Mueller” in the subject line



# EAST AUSTIN PTMD APPLICATION



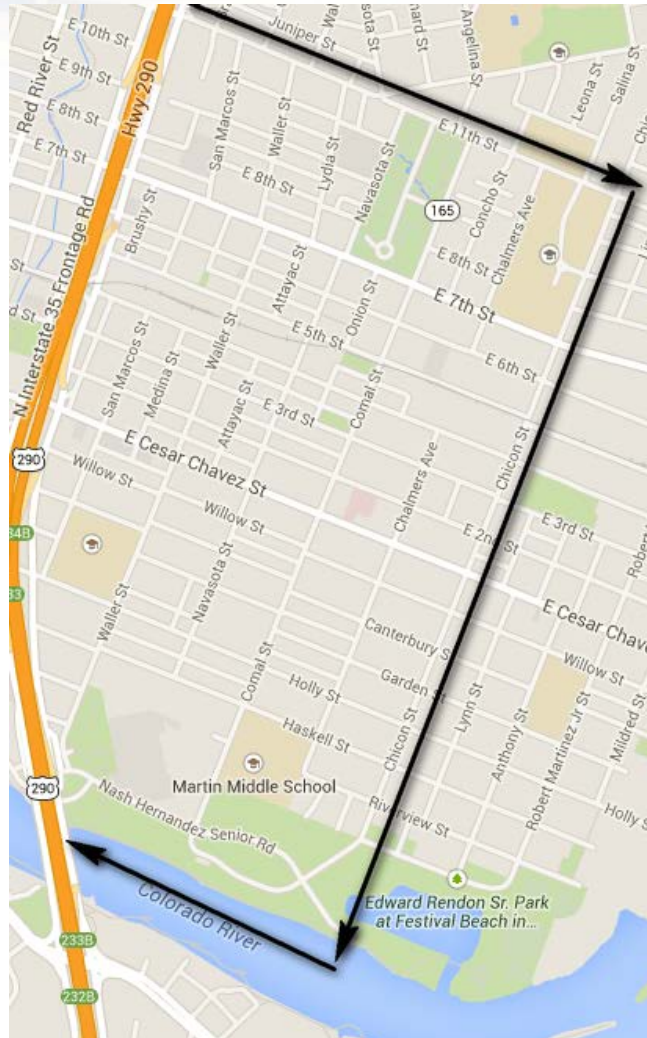
**AUSTIN MOBILITY** Making mobility better, together.

11.13.2014 / PESENTED UTC





# EAST AUSTIN PTMD: BOUNDARY



# EAST AUSTIN PTMD: REQUIREMENTS

## Requirements

- = / > 100 new on-street or 200 paid public off-street spaces
- Map showing boundaries of District
- List/Map showing Proposed On- and Off-Street Paid Public Parking
- Parking Proforma
- Proposed Tools
- Proposed Improvement Projects
- Oversight Committee
- Stakeholder Outreach meetings
- Letters of Recommendation

## Requirements Met

- ✓ 750 new on-street parking spaces
- ✓ Map Provided
- ✓ Map Provided
- ✓ Compiled by Staff
- ✓ List provided of existing and new
- ✓ List identified
- ✓ Organizations and Contacts identified
- ✓ Process detailed in application
- ✓ Verbal approval, letters sent



# EAST AUSTIN PTMD: PARKING PROFORMA

## Parking Proforma Compiled by Staff

East Austin Revenue and Expenses Estimate	
PTMD Proforma 2014-2015	
Total Projected Meter Revenue	\$486,640
Estimated City Expenses	\$313,880
Net Profit	\$172,760
<b>East Austin PTMD @ 51%</b>	<b>\$88,110</b>
COA @ 49%	\$84,650





# EAST AUSTIN PTMD: IMPLEMENTATION

## Next Steps:

- UTC: November 13, 2014
- City Council: December 11, 2014
- Parking Meter Installation: Q1 2015

## Email Parking Questions or Concerns:

[parking@austintexas.gov](mailto:parking@austintexas.gov)

Put “East Austin” in the subject line