



United States  
Post Office

CHILANTRO

TRAVAASA  
EXPERIENTIAL RESORTS  
AUSTIN

LINE.

In the Hill Country,  
only 20 miles away.

OPEN



# CHI'LANTRO CONGRESS

823 CONGRESS AVE. SUITE 175 / AUSTIN, TX 78701

## PROJECT DESCRIPTION

Tenant Finish-Out/Remodel of an existing 181sqft space for a Korean BBQ walk-up restaurant to include serving food prepared off-site, coffee/espresso prepared on-site, outdoor cafe seating, and a new overhang and exterior counter.

## APPLICABLE CODES

- 2012 International Building Code with Austin Amendments
- 2012 City of Austin Energy Code
- 2012 International Fire Code with Austin Amendments
- 2012 Uniform Mechanical Code with Austin Amendments
- 2012 Uniform Plumbing Code with Austin Amendments
- 2012 Texas Accessibility Standards
- 2011 National Electric Code with Austin Amendments

## PROJECT CONTACTS

- CLIENT
- Jae Kim  
Chi'Lantro  
512.568.0256  
jaekim@chilantrobbq.com
- ARCHITECT
- Matt Fajkus Architecture, LLC  
900 East 6th Street - Suite 100  
Austin, Texas 78702  
512.432.5137  
matt@mfarchitecture.com
- Project Manager:  
Ian M. Ellis  
ian@mfarchitecture.com
- MEP ENGINEER
- TTG  
12710 Research Blvd. Suite 355  
Austin, Texas 78759  
512.416.1654
- Project Manager:  
Aaron Campbell  
acampbell@ttgcorp.com
- STRUCTURAL ENGINEER
- Smith Structural Engineers  
9701 Brodie Lane  
Suite A-204  
Austin, Texas 78748  
512.381.0127
- Project Manager:  
Paula Hilbrich Lee  
paula@smith-structural.com
- GENERAL CONTRACTOR
- Structura  
9208 Waterford Centre Blvd. Suite 100  
Austin, Texas 78758  
512.495.9702

## LIST OF DRAWINGS

- ARCHITECTURAL
- A0.0 Cover Sheet & General Notes  
A0.1 Architectural Specifications  
A0.2 Texas Accessibility Standards  
A1.0 Plans: Site / Floor / Roof / Egress / RCP  
A1.1 Bathroom Permission Drawing  
A2.1 Exterior Elevations  
A3.1 Building Sections  
A4.1 Wall Types and Notes  
A4.2 Details and Notes  
A5.1 Interior Elevations
- STRUCTURAL
- 
- MECHANICAL
- M0.0 Mechanical Abbreviations & Symbols  
M0.1 Mechanical Specifications  
M1.1 Mechanical Floor Plan
- ELECTRICAL
- E0.0 Electrical Abbreviations & Symbols  
E0.1 Electrical Specifications  
E1.1 Electrical Power Plan  
E3.1 Electrical Schedule & Details
- PLUMBING
- P1.1 Plumbing Floor Plan  
P2.1 Plumbing Schedules  
P3.1 Plumbing Details

MATT FAJKUS ARCHITECTURE, LLC



900 East 6th St.  
Suite 100  
Austin, TX 78702  
TEL : 512 432 5137  
[www.mfarchitecture.com](http://www.mfarchitecture.com)

PROJECT TITLE

CHI'LANTRO CONGRESS

823 CONGRESS, SUITE 175 | AUSTIN, TX | 78701

NOT FOR REGULATORY APPROVAL,  
PERMITTING, OR CONSTRUCTION.

SEAL

These plans, drawings and specifications are the property of Matt Fajkus Architecture and any use and/or reuse thereof is part of or in whole without the written permission of the Architect is prohibited.  
Copyright 2014 Matt Fajkus Architecture

REVISIONS:

PROJECT NUMBER:

1422

DATE:

12.03.2014

PHASE:

PERMIT

DRAWING TITLE:

COVER SHEET  
AND NOTES

SHEET INFORMATION

A0.0

mfarchitecture





CHAPTER 3: BUILDING BLOCKS

302.2 FLOOR OR GROUND SURFACES

302.2 CARPET, CARPET OR CARPET TILE SHALL BE SECURELY ATTACHED AND SHALL HAVE A FIRM CUSHION, PAD OR BACKING OR NO CUSHION OR PAD. CARPET OR CARPET TILE SHALL HAVE A LEVEL, LOOP, TEXTURED LOOP, LEVEL CUT PILE, OR LEVEL CUT/UNCUT PILE TEXTURE. PILE HEIGHT SHALL BE 1/2 INCH (13 MM) MAXIMUM. EXPOSED EDGES OF CARPET SHALL BE FASTENED TO FLOOR SURFACES AND SHALL COMPLY WITH 303.

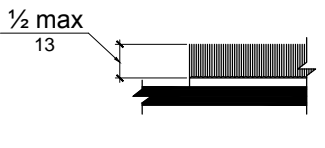


FIGURE 302.2 CARPET PILE HEIGHT

302.3 OPENINGS, OPENINGS IN FLOOR OR GROUND SURFACES SHALL NOT ALLOW PASSAGE OF A SPHERE MORE THAN 1 1/2 INCH (13 MM) DIAMETER EXCEPT AS ALLOWED IN 407.4.3, 409.4.3, 410.4, 610.5.3 AND 610.10. ELONGATED OPENINGS SHALL BE PLACED SO THAT THE LONG DIMENSION IS PERPENDICULAR TO THE DOMINANT DIRECTION OF TRAVEL.

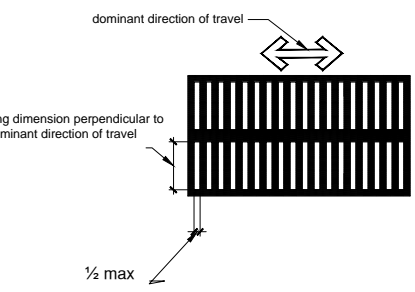


FIGURE 302.3 ELONGATED OPENINGS IN FLOOR OR GROUND SURFACES

303.2 VERTICAL CHANGES IN LEVEL OF 1/4 INCH (6.4 MM) HIGH MAXIMUM SHALL BE PERMITTED TO BE VERTICAL.

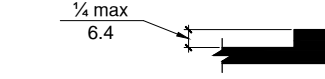


FIGURE 303.2 VERTICAL CHANGE IN LEVEL

303.3 BEVELED CHANGES IN LEVEL BETWEEN 1/4 INCH (6.4 MM) HIGH MINIMUM AND 1/2 INCH (13 MM) HIGH MAXIMUM SHALL BE BEVELED WITH A SLOPE NOT STEEPER THAN 1:2.

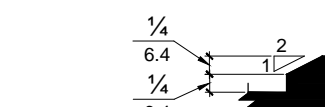


FIGURE 303.3 BEVELED CHANGE IN LEVEL

304 TURNING SPACE

304.3.1 CIRCULAR SPACE. THE TURNING SPACE SHALL BE A SPACE OF 60 INCHES (1525 MM) DIAMETER MINIMUM. THE SPACE SHALL BE PERMITTED TO INCLUDE KNEE AND TOE CLEARANCE COMPLYING WITH 306.

304.3.2 T-SHAPED SPACE. THE TURNING SPACE SHALL BE A T-SHAPED SPACE WITHIN A 60 INCH (1525 MM) SQUARE MINIMUM WITH ARMS AND BASE 36 INCHES (915 MM) WIDE MINIMUM. EACH ARM OF THE T SHALL BE CLEAR OF OBSTRUCTIONS 12 INCHES (305 MM) MINIMUM IN EACH DIRECTION AND THE BASE SHALL BE CLEAR OF OBSTRUCTIONS 24 INCHES (610 MM) MINIMUM. THE SPACE SHALL BE PERMITTED TO INCLUDE KNEE AND TOE CLEARANCE COMPLYING WITH 306 ONLY AT THE END OF EITHER THE BASE OR ONE ARM.

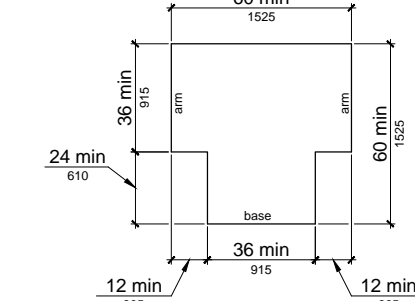


FIGURE 304.3.2 T-SHAPED TURNING SPACE

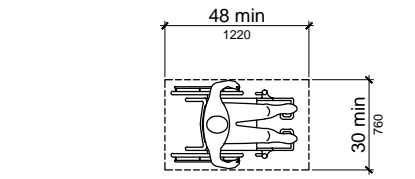


FIGURE 305.3 CLEAR FLOOR OR GROUND SPACE

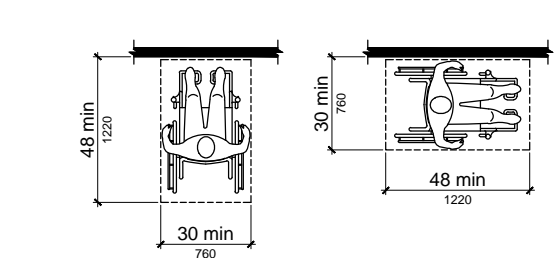


FIGURE 305.5 POSITION OF CLEAR FLOOR OR GROUND SPACE

305.7.1 FORWARD APPROACH. ALCOVES SHALL BE 36 INCHES (915 MM) WIDE MINIMUM WHERE THE DEPTH EXCEEDS 24 INCHES (610 MM).

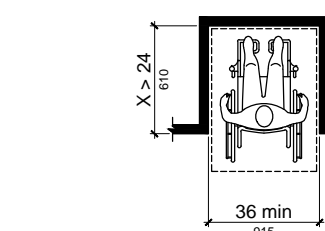


FIGURE 305.7.1 MANEUVERING CLEARANCE IN AN ALCOVE, FORWARD APPROACH

305.7.2 PARALLEL APPROACH. ALCOVES SHALL BE 60 INCHES (1525 MM) WIDE MINIMUM WHERE THE DEPTH EXCEEDS 15 INCHES (380 MM).

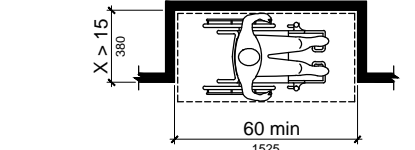


FIGURE 305.7.2 MANEUVERING CLEARANCE IN AN ALCOVE, PARALLEL APPROACH

306 KNEE AND TOE CLEARANCE

306.2 TOE CLEARANCE

306.2.1 GENERAL. SPACE UNDER AN ELEMENT BETWEEN THE FINISH FLOOR OR GROUND AND 9 INCHES (230 MM) ABOVE THE FINISH FLOOR OR GROUND SHALL BE CONSIDERED TOE CLEARANCE AND SHALL COMPLY WITH 306.2.

306.2.2 MAXIMUM DEPTH. TOE CLEARANCE SHALL EXTEND 25 INCHES (635 MM) MAXIMUM UNDER AN ELEMENT.

306.2.3 MINIMUM REQUIRED DEPTH. WHERE TOE CLEARANCE IS REQUIRED AT AN ELEMENT AS PART OF A CLEAR FLOOR SPACE, THE TOE CLEARANCE SHALL EXTEND 17 INCHES (430 MM) MINIMUM UNDER THE ELEMENT.

306.2.4 ADDITIONAL CLEARANCE. SPACE EXTENDING GREATER THAN 6 INCHES (150 MM) BEYOND THE AVAILABLE KNEE CLEARANCE AT 9 INCHES (230 MM) ABOVE THE FINISH FLOOR OR GROUND SHALL NOT BE CONSIDERED TOE CLEARANCE.

306.2.5 WIDTH. TOE CLEARANCE SHALL BE 30 INCHES (760 MM) WIDE MINIMUM.

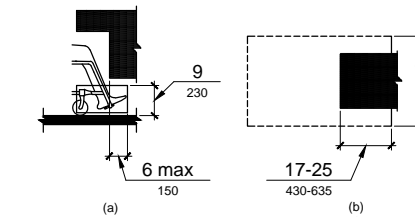


FIGURE 306.2 Toe Clearance

306.3 KNEE CLEARANCE

306.3.1 GENERAL. SPACE UNDER AN ELEMENT BETWEEN 9 INCHES (230 MM) AND 27 INCHES (685 MM) ABOVE THE FINISH FLOOR OR GROUND SHALL BE CONSIDERED KNEE CLEARANCE AND SHALL COMPLY WITH 306.3.

306.3.2 MAXIMUM DEPTH. KNEE CLEARANCE SHALL EXTEND 25 INCHES (635 MM) MAXIMUM UNDER AN ELEMENT AT 9 INCHES (230 MM) ABOVE THE FINISH FLOOR OR GROUND.

306.3.3 MINIMUM REQUIRED DEPTH. WHERE KNEE CLEARANCE IS REQUIRED UNDER AN ELEMENT AS PART OF A CLEAR FLOOR SPACE, THE KNEE CLEARANCE SHALL BE 11 INCHES (280 MM) DEEP MINIMUM AT 9 INCHES (230 MM) ABOVE THE FINISH FLOOR OR GROUND, AND 8 INCHES (205 MM) DEEP MINIMUM AT 27 INCHES (685 MM) ABOVE THE FINISH FLOOR OR GROUND.

306.3.4 CLEARANCE REDUCTION. BETWEEN 9 INCHES (230 MM) AND 27 INCHES (685 MM) ABOVE THE FINISH FLOOR OR GROUND, THE KNEE CLEARANCE SHALL BE PERMITTED TO REDUCE AT A RATE OF 1 INCH (25 MM) IN DEPTH FOR EACH 6 INCHES (150 MM) IN HEIGHT.

306.3.5 WIDTH. KNEE CLEARANCE SHALL BE 30 INCHES (760 MM) WIDE MINIMUM.

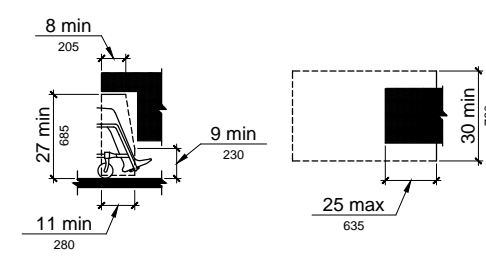


FIGURE 306.3 KNEE CLEARANCE

307 PROTRUDING OBJECTS

307.2 PROTRUSION LIMITS. OBJECTS WITH LEADING EDGES MORE THAN 27 INCHES (685 MM) AND NOT MORE THAN 80 INCHES (2030 MM) ABOVE THE FINISH FLOOR OR GROUND SHALL PROTRUDE 4 INCHES (100 MM) MAXIMUM HORIZONTALLY INTO THE CIRCULATION PATH.

EXCEPTION: HANDRAILS SHALL BE PERMITTED TO PROTRUDE 4 1/2 INCHES (115 MM) MAXIMUM.

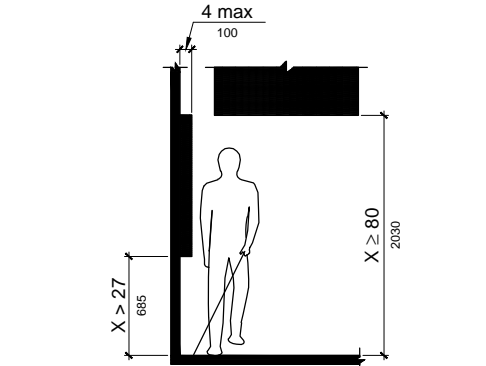


FIGURE 307.2 LIMITS OF PROTRUDING OBJECTS

307.3 POST-MOUNTED OBJECTS. FREE-STANDING OBJECTS MOUNTED ON POSTS OR PYLONS SHALL OVERHANG CIRCULATION PATHS 12 INCHES (305 MM) MAXIMUM WHEN LOCATED 27 INCHES (685 MM) MINIMUM AND 80 INCHES (2030 MM) MAXIMUM ABOVE THE FINISH FLOOR OR GROUND, WHERE A SIGN OR OTHER OBSTRUCTION IS MOUNTED BETWEEN POSTS OR PYLONS AND THE CLEAR DISTANCE BETWEEN THE POSTS OR PYLONS IS GREATER THAN 12 INCHES (305 MM), THE LOWEST EDGE OF SUCH SIGN OR OBSTRUCTION SHALL BE 27 INCHES (685 MM) MAXIMUM OR 80 INCHES (2030 MM) MINIMUM ABOVE THE FINISH FLOOR OR GROUND.

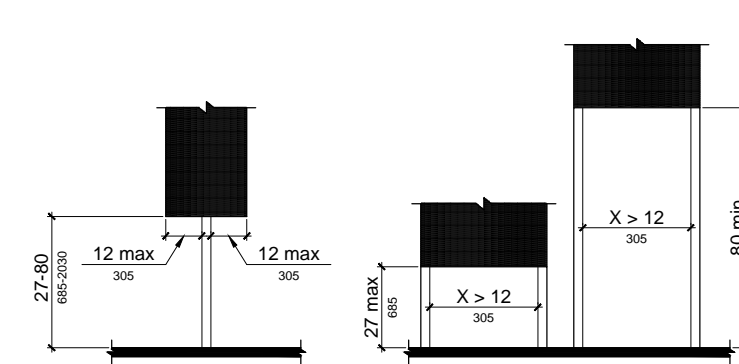


FIGURE 307.3 POST-MOUNTED PROTRUDING OBJECTS

307.4 VERTICAL CLEARANCE. VERTICAL CLEARANCE SHALL BE 80 INCHES (2030 MM) HIGH MINIMUM. GUARDRAILS OR OTHER BARRIERS SHALL BE PROVIDED WHERE THE VERTICAL CLEARANCE IS LESS THAN 80 INCHES (2030 MM) HIGH. THE LEADING EDGE OF SUCH GUARDRAIL OR BARRIER SHALL BE LOCATED 27 INCHES (685 MM) MAXIMUM ABOVE THE FINISH FLOOR OR GROUND.

EXCEPTION: DOOR CLOSERS AND DOOR STOPS SHALL BE PERMITTED TO BE 78 INCHES (1980 MM) MINIMUM ABOVE THE FINISH FLOOR OR GROUND.

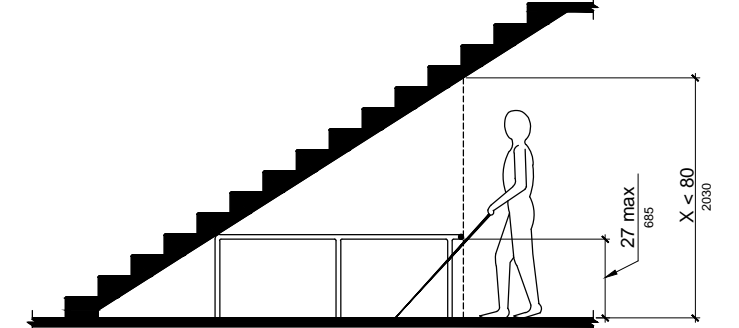


FIGURE 307.4 VERTICAL CLEARANCE

308 REAR REACH

CHILDREN'S REACH RANGES	High (maximum)	Low (minimum)
Ages 3 and 4	36 in (915 mm)	20 in (510 mm)
Ages 5 through 8	40 in (1015 mm)	18 in (455 mm)
Ages 9 through 12	44 in (1120 mm)	16 in (405 mm)

308.2 FORWARD REACH

308.2.1 UNOBSTRUCTED. WHERE A FORWARD REACH IS UNOBSTRUCTED, THE HIGH FORWARD REACH SHALL BE 48 INCHES (1220 MM) MAXIMUM AND THE LOW FORWARD REACH SHALL BE 15 INCHES (380 MM) MINIMUM ABOVE THE FINISH FLOOR OR GROUND.

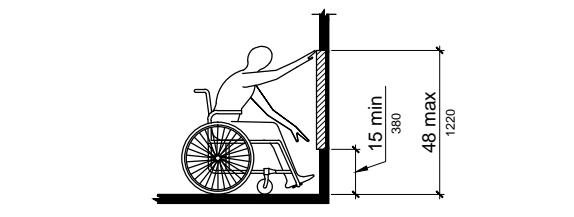


FIGURE 308.2 OBSTRUCTED HIGH FORWARD REACH

308.2.2 OBSTRUCTED HIGH REACH. WHERE A HIGH FORWARD REACH IS OVER AN OBSTRUCTION, THE CLEAR FLOOR SPACE SHALL EXTEND BENEATH THE ELEMENT FOR A DISTANCE NOT LESS THAN THE REQUIRED REACH DEPTH OVER THE OBSTRUCTION. THE HIGH FORWARD REACH SHALL BE 48 INCHES (1220 MM) MAXIMUM WHERE THE REACH DEPTH IS 20 INCHES (510 MM) MAXIMUM, WHERE THE REACH DEPTH EXCEEDS 20 INCHES (510 MM), THE HIGH FORWARD REACH SHALL BE 44 INCHES (1120 MM) MAXIMUM AND THE REACH DEPTH SHALL BE 25 INCHES (635 MM) MAXIMUM.

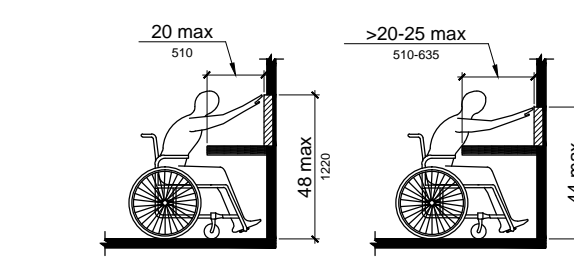
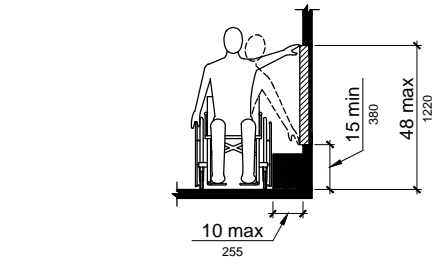


FIGURE 308.2.1 UNOBSTRUCTED SIDE REACH

308.3 SIDE REACH

308.3.1 UNOBSTRUCTED. WHERE A CLEAR FLOOR OR GROUND SPACE ALLOWS A PARALLEL APPROACH TO AN ELEMENT AND THE HIGH SIDE REACH IS UNOBSTRUCTED, THE HIGH SIDE REACH SHALL BE 48 INCHES (1220 MM) MAXIMUM AND THE LOW SIDE REACH SHALL BE 15 INCHES (380 MM) MINIMUM ABOVE THE FINISH FLOOR OR GROUND.



308.3.2 OBSTRUCTED HIGH REACH. WHERE A CLEAR FLOOR OR GROUND SPACE ALLOWS A PARALLEL APPROACH TO AN ELEMENT AND THE HIGH SIDE REACH IS OVER AN OBSTRUCTION, THE HEIGHT OF THE OBSTRUCTION SHALL BE 34 INCHES (865 MM) MAXIMUM AND THE DEPTH OF THE OBSTRUCTION SHALL BE 24 INCHES (610 MM) MAXIMUM. THE HIGH SIDE REACH SHALL BE 48 INCHES (1220 MM) MAXIMUM FOR A REACH DEPTH OF 10 INCHES (255 MM) MAXIMUM, WHERE THE REACH DEPTH EXCEEDS 10 INCHES (255 MM), THE HIGH SIDE REACH SHALL BE 46 INCHES (1170 MM) MAXIMUM FOR A REACH DEPTH OF 24 INCHES (610 MM) MAXIMUM.

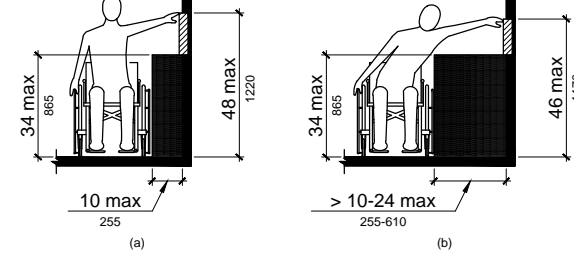


FIGURE 308.3.2 OBSTRUCTED HIGH SIDE REACH

309 OPERABLE PARTS

309.2 CLEAR FLOOR SPACE. A CLEAR FLOOR OR GROUND SPACE COMPLYING WITH 305 SHALL BE PROVIDED.

309.3 HEIGHT. OPERABLE PARTS SHALL BE PLACED WITHIN ONE OR MORE OF THE REACH RANGES SPECIFIED IN 308.

309.4 OPERATION. OPERABLE PARTS SHALL BE OPERABLE WITH ONE HAND AND SHALL NOT REQUIRE TIGHT GRASPING, PINCHING, OR TWISTING OF THE WRIST. THE FORCE REQUIRED TO ACTIVATE OPERABLE PARTS SHALL BE 5 POUNDS (22.2 N) MAXIMUM.

CHAPTER 4: ACCESSIBLE ROUTES

402.2 COMPONENTS. ACCESSIBLE ROUTES SHALL CONSIST OF ONE OR MORE OF THE FOLLOWING COMPONENTS: WALKING SURFACES WITH A RUNNING SLOPE NOT STEEPER THAN 1:20, DOORWAYS, RAMPS, CURB RAMP, EXCLUDING THE HANDSIDES, SIDES, ELEVATORS, AND PLATFORM LIFTS. ALL COMPONENTS OF AN ACCESSIBLE ROUTE SHALL COMPLY WITH THE APPLICABLE REQUIREMENTS OF CHAPTER 4. ADVISORY 402.2 COMPONENTS. WALKING SURFACES MUST HAVE RUNNING SLOPES NOT STEEPER THAN 1:20. SEE 403.3.3. OTHER COMPONENTS OF ACCESSIBLE ROUTES, SUCH AS RAMPS (405) AND CURB RAMPS (406), ARE PERMITTED TO BE MORE STEEPLY SLOPED. 403 WALKING SURFACES. 403.1 GENERAL. WALKING SURFACES THAT ARE A PART OF AN ACCESSIBLE ROUTE SHALL COMPLY WITH 403.

403.2 FLOOR OR GROUND SURFACE. FLOOR OR GROUND SURFACES SHALL COMPLY WITH 302. 403.3 SLOPE. THE RUNNING SLOPE OF WALKING SURFACES SHALL NOT BE STEEPER THAN 1:20. THE CROSS SLOPE OF WALKING SURFACES SHALL NOT BE STEEPER THAN 1:48.

403.4 CHANGES IN LEVEL. CHANGES IN LEVEL SHALL COMPLY WITH 303.

403.5 CLEARANCES. WALKING SURFACES SHALL PROVIDE CLEARANCES COMPLYING WITH 403.5. EXCEPTION: WITHIN EMPLOYEE WORK AREAS, CLEARANCES ON COMMON USE CIRCULATION PATHS SHALL BE PERMITTED TO BE DECREASED BY WORK AREA EQUIPMENT PROVIDED THAT THE DECREASE IS ESSENTIAL TO THE FUNCTION OF THE WORK BEING PERFORMED.

403.5.1 CLEAR WIDTH. EXCEPT AS PROVIDED IN 403.5.2 AND 403.5.3, THE CLEAR WIDTH OF WALKING SURFACES SHALL BE 36 INCHES (915 MM) MINIMUM. EXCEPTION: THE CLEAR WIDTH SHALL BE PERMITTED TO BE REDUCED TO 32 INCHES (815 MM) MINIMUM FOR A LENGTH OF 24 INCHES (610 MM) MAXIMUM PROVIDED THE REDUCED WIDTH SEGMENTS ARE SEPARATED BY SEGMENTS THAT ARE 48 INCHES (1220 MM) LONG MINIMUM AND 36 INCHES (915 MM) WIDE MINIMUM.

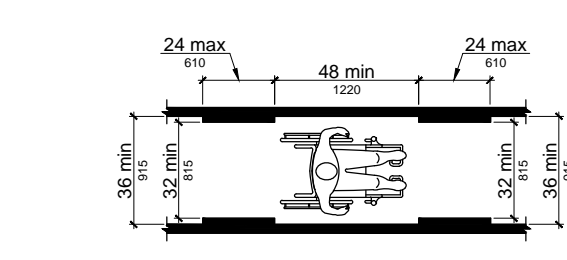


FIGURE 403.5.1 CLEAR WIDTH OF AN ACCESSIBLE ROUTE

403.5.2 CLEAR WIDTH AT TURN. WHERE THE ACCESSIBLE ROUTE MAKES A 180 DEGREE TURN AROUND AN ELEMENT WHICH IS LESS THAN 48 INCHES (1220 MM) WIDE, CLEAR WIDTH SHALL BE 42 INCHES (1065 MM) MINIMUM. APPROACHING THE TURN, 48 INCHES (1220 MM) MINIMUM AT THE TURN AND 42 INCHES (1065 MM) MINIMUM LEAVING THE TURN.

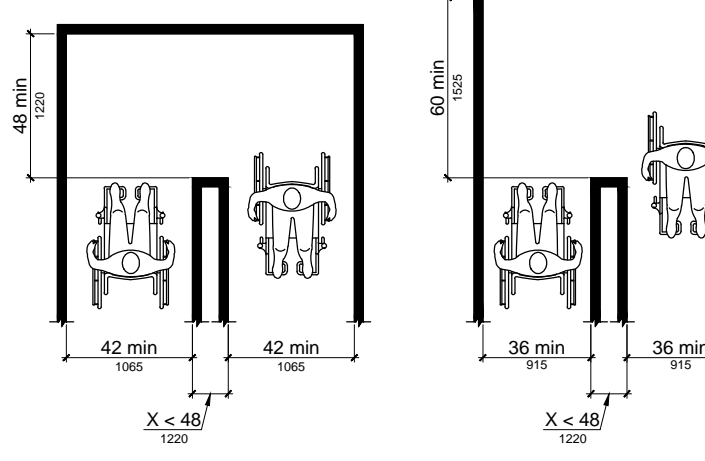


FIGURE 403.5.2 CLEAR WIDTH AT TURN

403.5.3 PASSING SPACES. AN ACCESSIBLE ROUTE WITH A CLEAR WIDTH LESS THAN 60 INCHES (1525 MM) SHALL PROVIDE PASSING SPACES AT INTERVALS OF 200 FEET (61 M) MAXIMUM.

404 DOORS, DOORWAYS, AND GATES

404.2.3 CLEAR WIDTH. DOOR OPENINGS SHALL PROVIDE A CLEAR WIDTH OF 32 INCHES (815 MM) MINIMUM. CLEAR OPENINGS OF DOORWAYS WITH SWINGING DOORS SHALL BE MEASURED BETWEEN THE FACE OF THE DOOR AND THE STOP. WITH THE DOOR OPEN 90 DEGREES, OPENINGS MORE THAN 24 INCHES (610 MM) DEEP SHALL PROVIDE A CLEAR OPENING OF 36 INCHES (915 MM) MINIMUM. THERE SHALL BE NO PROJECTIONS INTO THE REQUIRED CLEAR OPENING WITH LOWER THAN 34 INCHES (865 MM) ABOVE THE FINISH FLOOR OR GROUND. PROJECTIONS INTO THE CLEAR OPENING WITH BENEATH 34 INCHES (865 MM) AND 80 INCHES (2030 MM) ABOVE THE FINISH FLOOR OR GROUND SHALL NOT EXCEED 4 INCHES (100 MM).

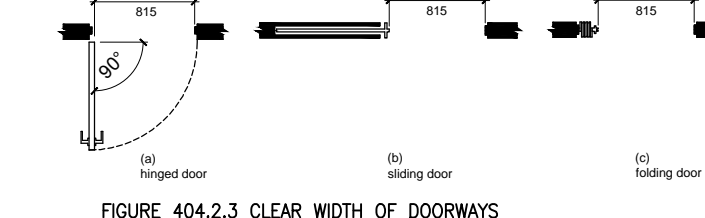


FIGURE 404.2.3 CLEAR WIDTH OF DOORWAYS

404.2.4 MANEUVERING CLEARANCES. MINIMUM MANEUVERING CLEARANCES AT DOORS AND GATES SHALL COMPLY WITH 404.2.4. MANEUVERING CLEARANCES SHALL EXTEND THE FULL WIDTH OF THE DOORWAY AND THE REQUIRED LATCH SIDE OR HINGE SIDE CLEARANCE.



FIGURE 404.2.4 MANEUVERING CLEARANCES AT DOORS AND GATES

404.2.4.3 RECESSED DOORS AND GATES. MANEUVERING CLEARANCES FOR FORWARD APPROACH SHALL BE PROVIDED WHEN ANY OBSTRUCTION WITHIN 18 INCHES (455 MM) OF THE LATCH SIDE OF A DOORWAY PROJECTIONS MORE THAN 8 INCHES (205 MM) BEYOND THE FACE OF THE DOOR, MEASURED PERPENDICULAR TO THE FACE OF THE DOOR OR GATE.

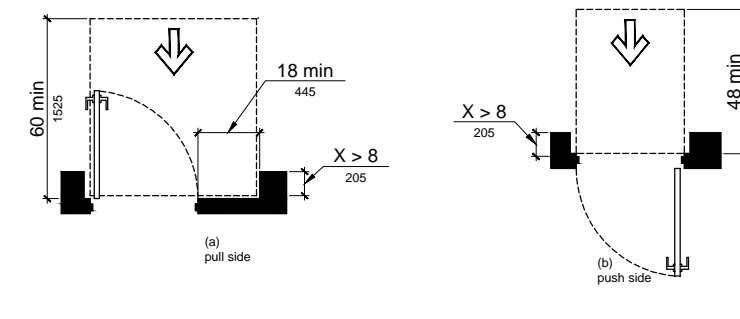


FIGURE 404.2.4.3 MANEUVERING CLEARANCES AT RECESSED DOORS AND GATES

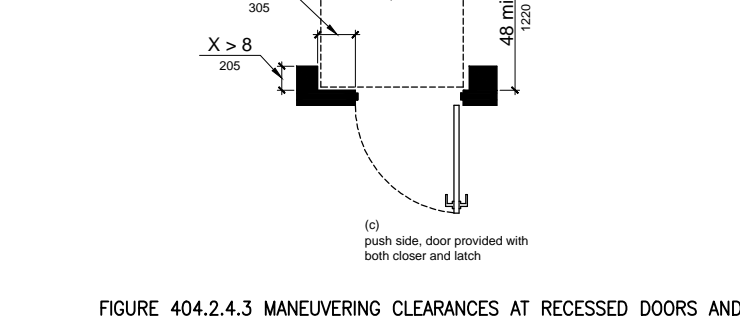


FIGURE 404.2.4.3 MANEUVERING CLEARANCES AT RECESSED DOORS AND GATES

602 DRINKING FOUNTAINS

602.2 CLEAR FLOOR SPACE. UNITS SHALL HAVE A CLEAR FLOOR OR GROUND SPACE COMPLYING WITH 305 POSITIONED FOR A FORWARD APPROACH AND CENTERED ON THE UNIT. KNEE AND TOE CLEARANCE COMPLYING WITH 306 SHALL BE PROVIDED.

EXCEPTION: A PARALLEL APPROACH COMPLYING WITH 305 SHALL BE PERMITTED AT UNITS FOR CHILDREN'S USE WHERE THE SPOUT IS 30 INCHES (760 MM) MAXIMUM ABOVE THE FINISH FLOOR OR GROUND AND IS 3 1/2 INCHES (90 MM) MAXIMUM FROM THE FRONT EDGE OF THE UNIT, INCLUDING BUMPERS.

602.3 OPERABLE PARTS. OPERABLE PARTS SHALL COMPLY WITH 309. 602.4 SPOUT HEIGHT. SPOUT OUTLETS SHALL BE 36 INCHES (915 MM) MINIMUM ABOVE THE FINISH FLOOR OR GROUND.

602.5 SPOUT LOCATION. THE SPOUT SHALL BE LOCATED 15 INCHES (380 MM) MINIMUM FROM THE VERTICAL SUPPORT AND 5 INCHES (125 MM) MAXIMUM FROM THE FRONT EDGE OF THE UNIT, INCLUDING BUMPERS.



FIGURE 602.5 DRINKING FOUNTAIN SPOUT LOCATION

602.6 WATER FLOW. THE SPOUT SHALL PROVIDE A FLOW OF WATER 4 INCHES (100 MM) HIGH MINIMUM AND SHALL BE LOCATED 5 INCHES (125 MM) MAXIMUM FROM THE FRONT OF THE UNIT. THE ANGLE OF THE WATER STREAM SHALL BE MEASURED HORIZONTALLY RELATIVE TO THE FRONT FACE OF THE UNIT. WHERE SPOUTS ARE LOCATED LESS THAN 3 INCHES (75 MM) OF THE FRONT OF THE UNIT, THE ANGLE OF THE WATER STREAM SHALL BE 30 DEGREES MAXIMUM. WHERE SPOUTS ARE LOCATED BETWEEN 3 INCHES (75 MM) AND 5 INCHES (125 MM) MAXIMUM FROM THE FRONT OF THE UNIT, THE ANGLE OF THE WATER STREAM SHALL BE 15 DEGREES MAXIMUM.

602.7 DRINKING FOUNTAINS FOR STANDING PERSONS. SPOUT OUTLETS OF DRINKING FOUNTAINS FOR STANDING PERSONS SHALL BE 36 INCHES (915 MM) MINIMUM AND 43 INCHES (1090 MM) MAXIMUM ABOVE THE FINISH FLOOR OR GROUND.

603 TOILET AND BATHING ROOMS

603.2 CLEARANCES. CLEARANCES SHALL COMPLY WITH 603.2.

603.2.1 TURNING SPACE. TURNING SPACE COMPLYING WITH 304 SHALL BE PROVIDED WITHIN THE ROOM. 603.2.2 OVERLAP. REQUIRED CLEAR FLOOR SPACES, CLEARANCE AT FIXTURES, AND TURNING SPACE SHALL BE PERMITTED TO OVERLAP.

603.2.3 DOOR SWING. DOORS SHALL NOT SWING INTO THE CLEAR FLOOR SPACE OR CLEARANCE REQUIRED FOR ANY FIXTURE. DOORS SHALL BE PERMITTED TO SWING INTO THE REQUIRED TURNING SPACE.

603.3 MIRRORS. MIRRORS LOCATED ABOVE LAVATOIRES OR COUNTERTOPS SHALL BE INSTALLED WITH THE BOTTOM EDGE OF THE REFLECTING SURFACE 40 INCHES (1015 MM) MAXIMUM ABOVE THE FINISH FLOOR OR GROUND. MIRRORS NOT LOCATED ABOVE LAVATOIRES OR COUNTERTOPS SHALL BE INSTALLED WITH THE BOTTOM EDGE OF THE REFLECTING SURFACE 35 INCHES (890 MM) MAXIMUM ABOVE THE FINISH FLOOR OR GROUND.

603.4 COAT HOOKS AND SHELVES. COAT HOOKS SHALL BE LOCATED WITHIN ONE OF THE REACH RANGES SPECIFIED IN 308. SHELVES SHALL BE LOCATED 40 INCHES (1015 MM) MINIMUM AND 48 INCHES (1220 MM) MAXIMUM ABOVE THE FINISH FLOOR. 604 WATER CLOSETS AND TOILET COMPARTMENTS. 604.2 LOCATION. THE WATER CLOSET SHALL BE POSITIONED WITH A WALL OR PARTITION TO THE REAR AND TO ONE SIDE. THE CENTERLINE OF THE WATER CLOSET SHALL BE 16 INCHES (405 MM) MINIMUM TO 18 INCHES (455 MM) MAXIMUM FROM THE SIDE WALL OR PARTITION, EXCEPT THAT THE WATER CLOSET SHALL BE 17 INCHES (430 MM) MINIMUM AND 19 INCHES (485 MM) MAXIMUM FROM THE SIDE WALL OR PARTITION IN THE AMBULATORY ACCESSIBLE TOILET COMPARTMENT SPECIFIED IN 604.8.2. WATER CLOSETS SHALL BE ARRANGED FOR A LEFT-HAND OR RIGHT-HAND APPROACH.

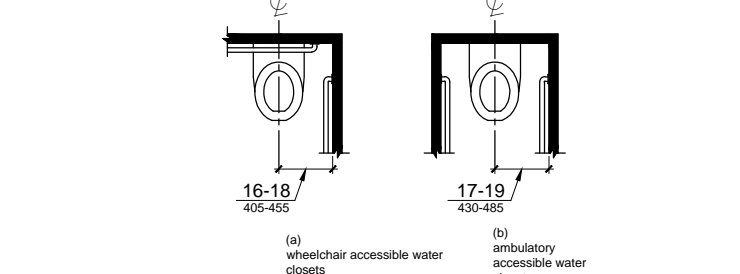


FIGURE 604.2 WATER CLOSET LOCATION

604.3.1 SIZE. CLEARANCE AROUND A WATER CLOSET SHALL BE 60 INCHES (1525 MM) MINIMUM MEASURED PERPENDICULAR FROM THE SIDE WALL AND 56 INCHES (1420 MM) MINIMUM MEASURED PERPENDICULAR FROM THE REAR WALL.

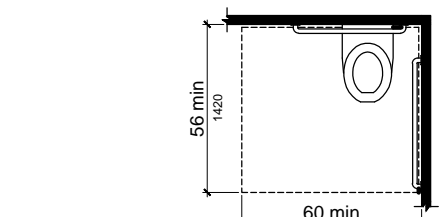


FIGURE 604.3.1 SIZE OF CLEARANCE AT WATER CLOSETS

604.3.2 OVERLAP. THE REQUIRED CLEARANCE AROUND THE WATER CLOSET SHALL BE PERMITTED TO OVERLAP THE WATER CLOSET. ASSOCIATED GRAB BARS, DISPENSERS, SANITARY MOPIN DISPOSAL UNITS, COAT HOOKS, SHELVES, ACCESSIBLE ROUTES, CLEAR FLOOR SPACE AND CLEARANCES REQUIRED AT OTHER FIXTURES, AND THE TURNING SPACE, NO OTHER FIXTURES OR OBSTRUCTIONS SHALL BE LOCATED WITHIN THE REQUIRED WATER CLOSET CLEARANCE.

604.4 SEATS. THE SEAT HEIGHT OF A WATER CLOSET ABOVE THE FINISH FLOOR SHALL BE 17 INCHES (430 MM) MINIMUM AND 19 INCHES (485 MM) MAXIMUM MEASURED TO THE TOP OF THE SEAT. SEATS SHALL NOT BE SPRUNG TO RETURN TO A LIFTED POSITION. 604.5 GRAB BARS. GRAB BARS FOR WATER CLOSETS SHALL COMPLY WITH 609. GRAB BARS SHALL BE PROVIDED ON THE SIDE WALL CLOSEST TO THE WATER CLOSET AND ON THE REAR WALL. 604.5.1 SIDE WALL. THE SIDE WALL GRAB BAR SHALL BE 42 INCHES (1065 MM) LONG MINIMUM, LOCATED 12 INCHES (305 MM) MAXIMUM FROM THE REAR WALL AND EXTENDING 54 INCHES (1370 MM) MINIMUM FROM THE REAR WALL.

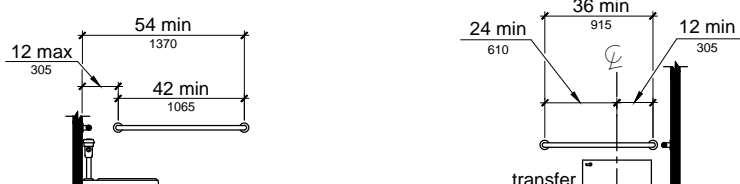


FIGURE 604.5.1 SIDE WALL GRAB BAR AT WATER CLOSETS

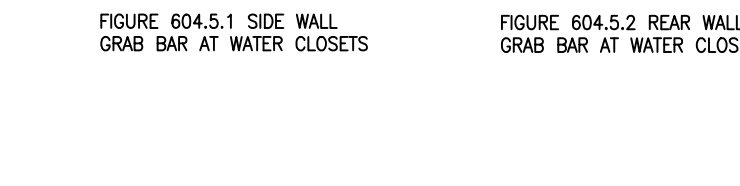


FIGURE 604.5.2 REAR WALL GRAB BAR AT WATER CLOSETS

604.5.2 REAR WALL. THE REAR WALL GRAB BAR SHALL BE 36 INCHES (915 MM) LONG MINIMUM AND EXTEND FROM THE CENTERLINE OF THE WATER CLOSET 12 INCHES (305 MM) MINIMUM ON ONE SIDE AND 12 INCHES (305 MM) MINIMUM ON THE OTHER SIDE.

604.6 FLUSH CONTROLS. FLUSH CONTROLS SHALL BE HAND OPERATED OR AUTOMATIC. HAND OPERATED FLUSH CONTROLS SHALL COMPLY WITH 309. FLUSH CONTROLS SHALL BE LOCATED ON THE OPEN SIDE OF THE WATER CLOSET EXCEPT IN AMBULATORY ACCESSIBLE COMPARTMENTS COMPLYING WITH 604.8.2.

604.7 DISPENSERS. TOILET PAPER DISPENSERS SHALL COMPLY WITH 309.4 AND SHALL BE 7 INCHES (180 MM) MINIMUM AND 9 INCHES (230 MM) MAXIMUM IN FRONT OF THE WATER CLOSET MEASURED TO THE CENTERLINE OF THE DISPENSER. THE OUTLET OF THE DISPENSER SHALL BE 15 INCHES (380 MM) MINIMUM AND 48 INCHES (1220 MM) MAXIMUM ABOVE THE FINISH FLOOR AND SHALL NOT BE LOCATED BEHIND GRAB BARS. DISPENSERS SHALL NOT BE OF A TYPE THAT CONTROLS DELIVERY OR THAT DOES NOT ALLOW CONTINUOUS PAPER FLOW.

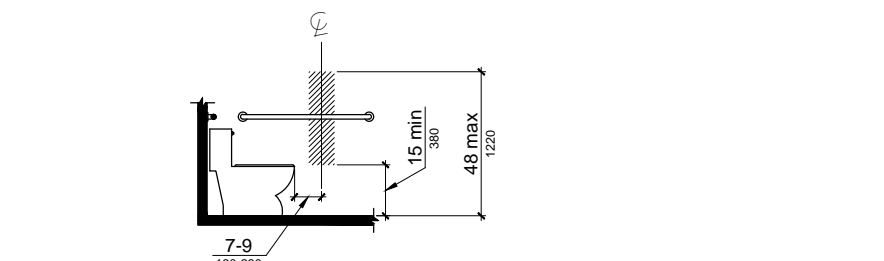


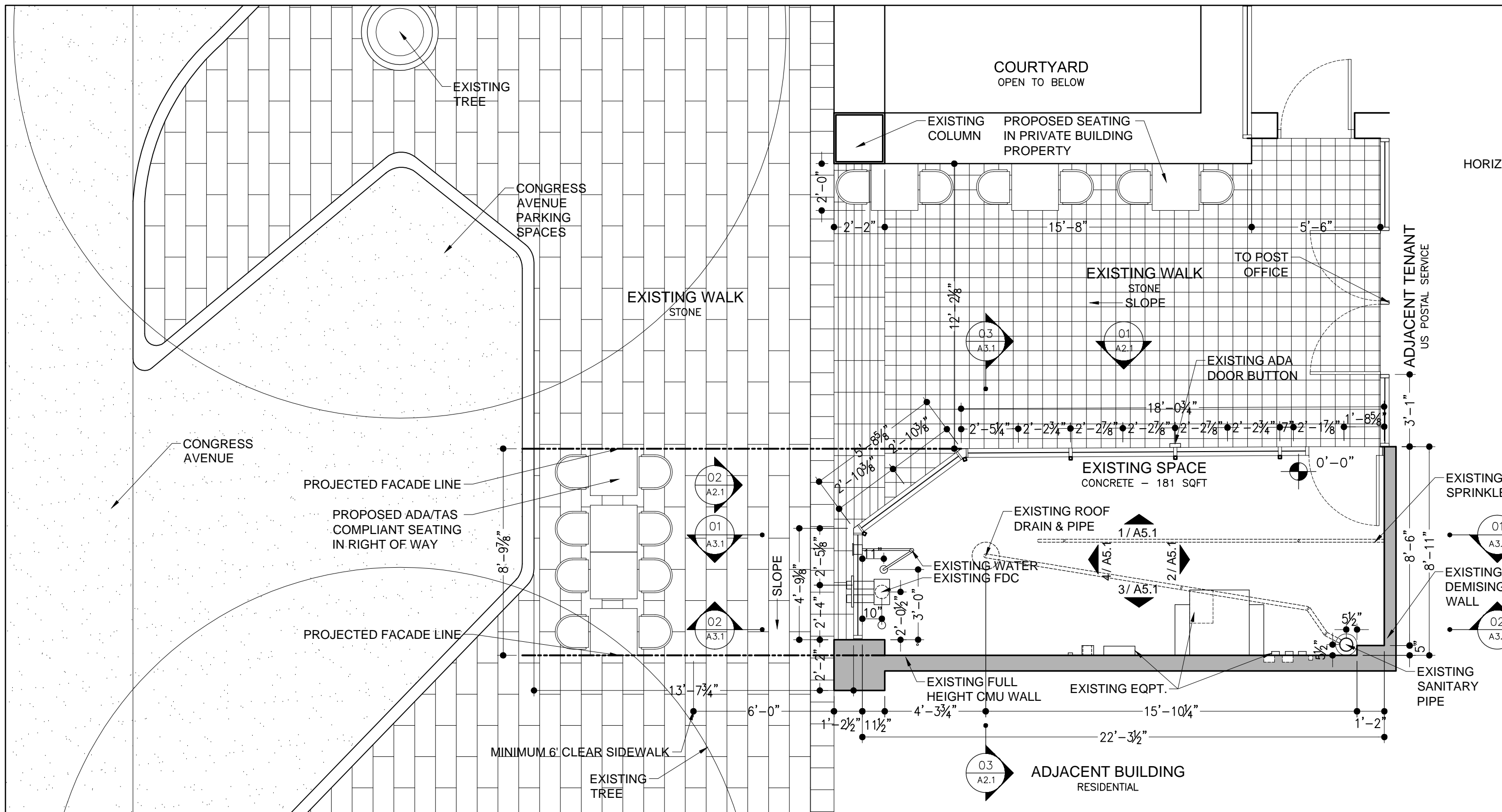
FIGURE 604.7 DISPENSER OUTLET LOCATION

604.8 TOILET COMPARTMENTS. WHEELCHAIR ACCESSIBLE TOILET COMPARTMENTS SHALL MEET THE REQUIREMENTS OF 604.8.1 AND 604.8.3. COMPARTMENTS CONTAINING MORE THAN ONE PLUMBING FIXTURE SHALL COMPLY WITH 603. AMBULATORY ACCESSIBLE COMPARTMENTS SHALL COMPLY WITH 604.8.2 AND 604.8.3.

604.8.1 WHEELCHAIR ACCESSIBLE COMPARTMENTS. WHEELCHAIR ACCESSIBLE COMPARTMENTS SHALL COMPLY WITH 604.8.1.

604.8.1.1 SIZE. WHEELCHAIR ACCESSIBLE COMPARTMENTS SHALL BE 60 INCHES (1525 MM) WIDE MINIMUM MEASURED PERPENDICULAR TO THE SIDE WALL, AND 56 INCHES (1420 MM) DEEP MINIMUM FOR WALL HUNG WATER CLOSETS AND 59 INCHES (1500 MM) DEEP MINIMUM FOR FLOOR MOUNTED WATER CLOSETS MEASURED PERPENDICULAR TO THE REAR WALL. WHEELCHAIR ACCESSIBLE COMPARTMENTS FOR CHILDREN'S USE SHALL BE 60 INCHES (1525 MM) WIDE MINIMUM MEASURED PERPENDICULAR TO THE SIDE WALL, AND 59 INCHES (1500 MM) DEEP MINIMUM FOR WALL HUNG AND FLOOR MOUNTED WATER CLOSETS MEASURED PERPENDICULAR TO THE REAR WALL.

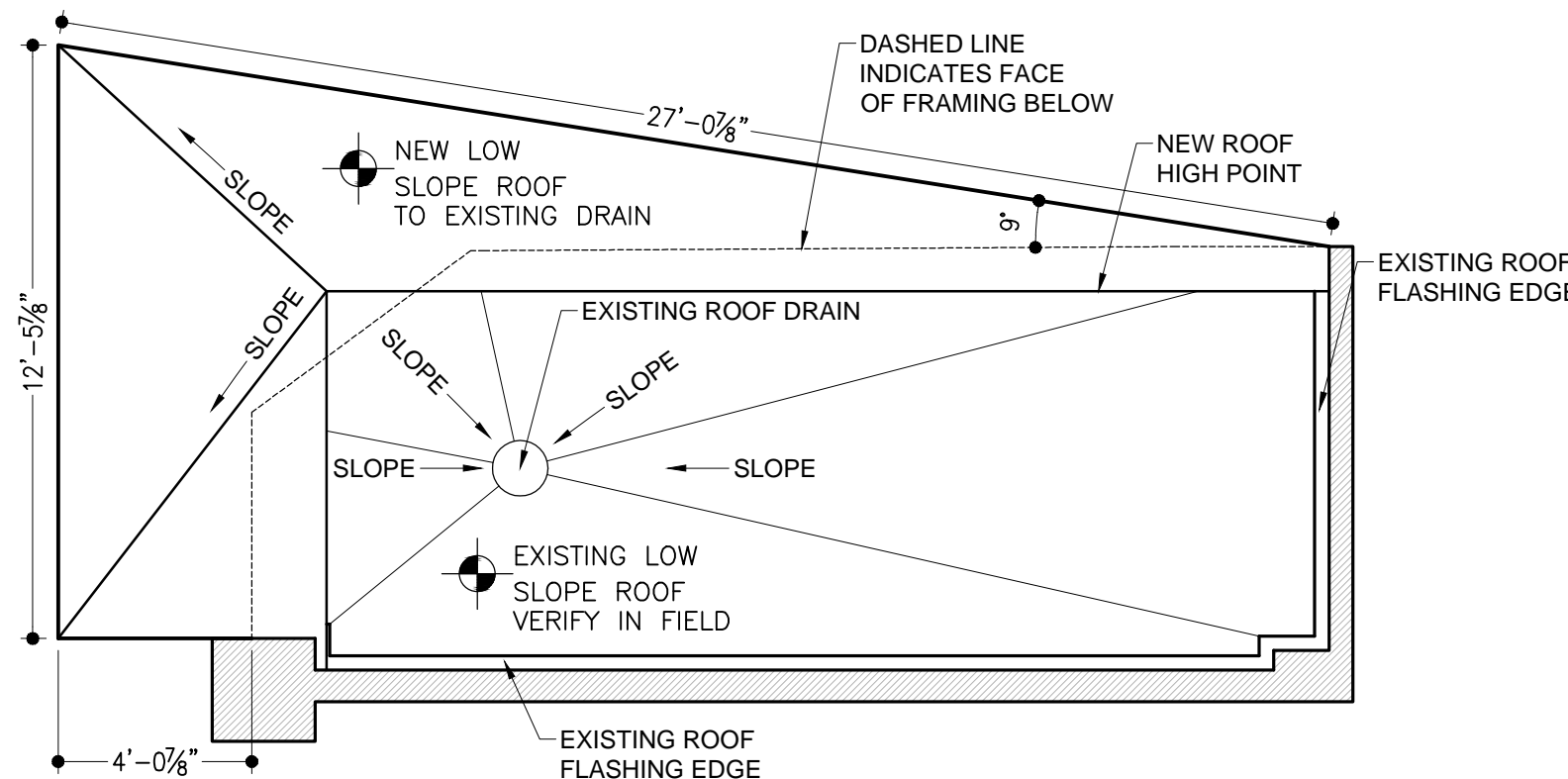




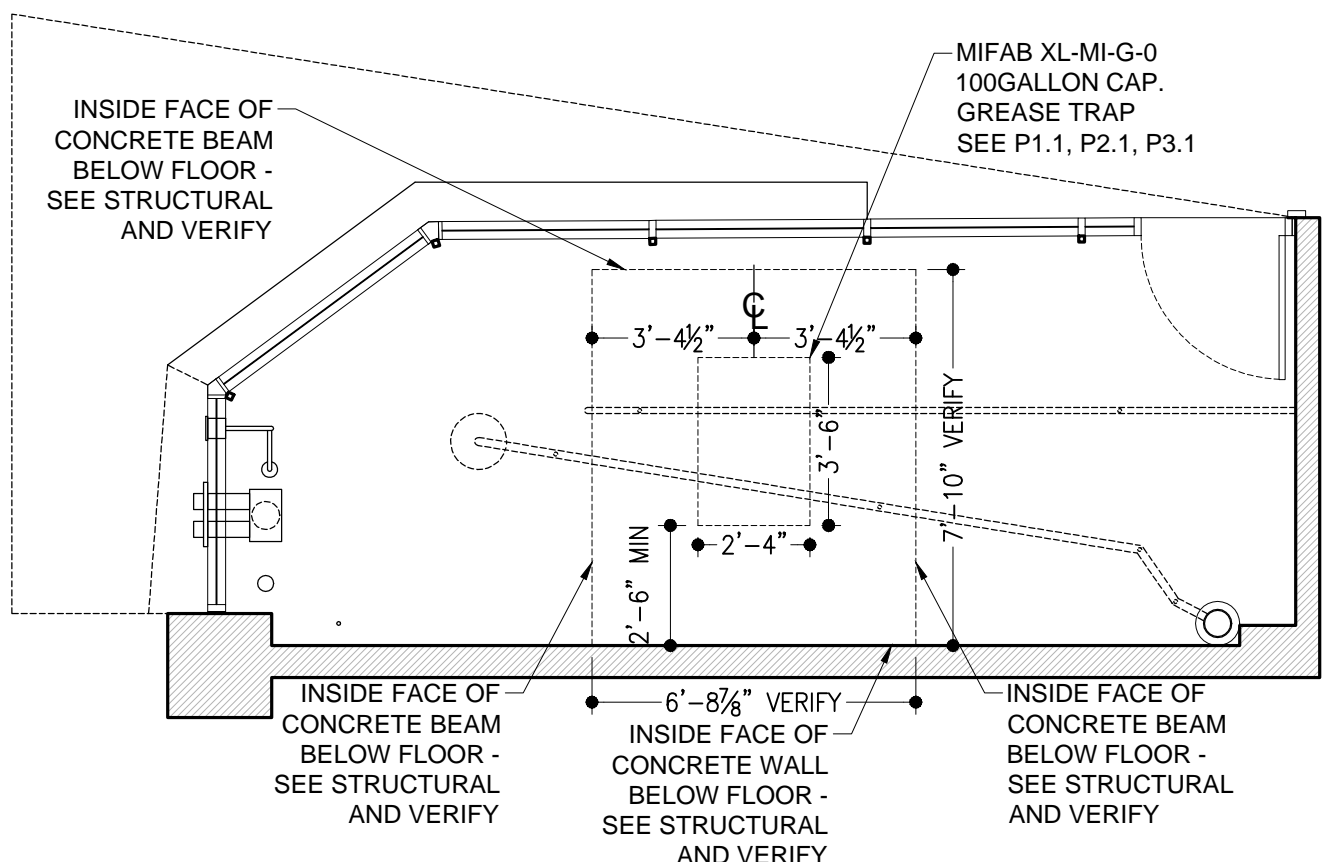
1 EXISTING SITE PLAN  
1/4"=1'-0"

FINISH SCHEDULE	NORTH WALL	EAST WALL	SOUTH WALL	WEST WALL	CEILING	HEIGHT	FLOOR
LOCATION	FRP WAINSCOT	WHITE SUBWAY TILE	PAINTED CMUTILE	FRP WAINSCOT	DROP-IN TILE	8'-0"	SEALED CONCRETE
INTERIOR							
SURFACES	MANUFACTURER	TYPE	THICKNESS	COLOR			
ALL INTERIOR COUNTERS		STAINLESS STEEL	TYPICAL				
ALL EXTERIOR COUNTERS		IPE		CLEAR SEAL			

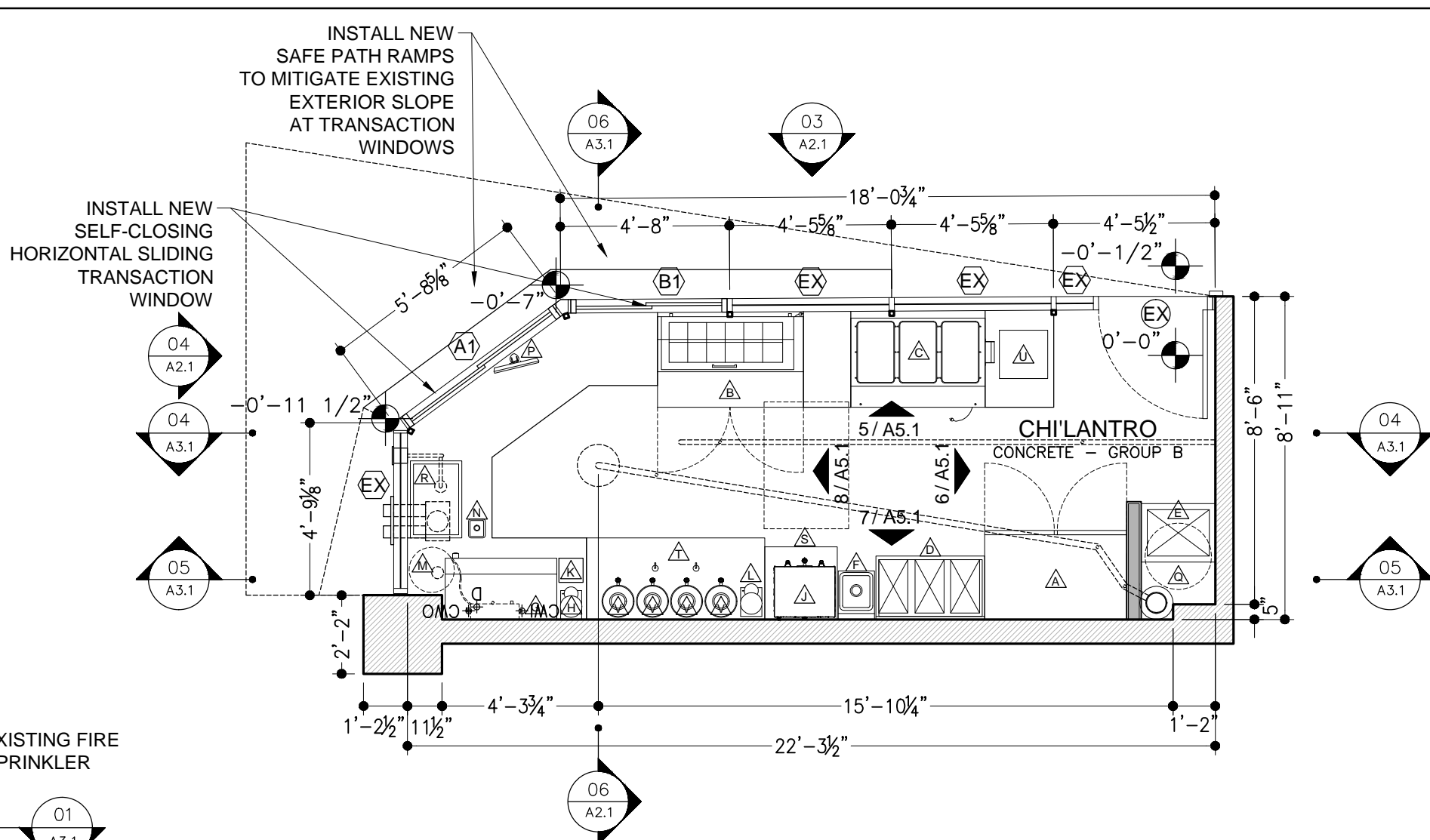
WINDOW SCHEDULE - Windows to be Self Closing XO Sliding Service Windows manufactured by CR Laurence Co. - Color TBD by Owner.						
LOCATION	KEY	TYPE	ROUGH OPENING	NOTES		
ROOM	WIDTH	HEIGHT	HEAD HT.			
TRANSACTION	A1	TRANSACTION	5'-2"	4'-5"	7'-0"	SELF-CLOSING XO HORIZONTAL SLIDER - VERIFY DIMENSIONS ON SITE
TRANSACTION	B1	TRANSACTION	4'-3 3/4"	4'-5"	7'-0"	SELF-CLOSING XO HORIZONTAL SLIDER - VERIFY DIMENSIONS ON SITE



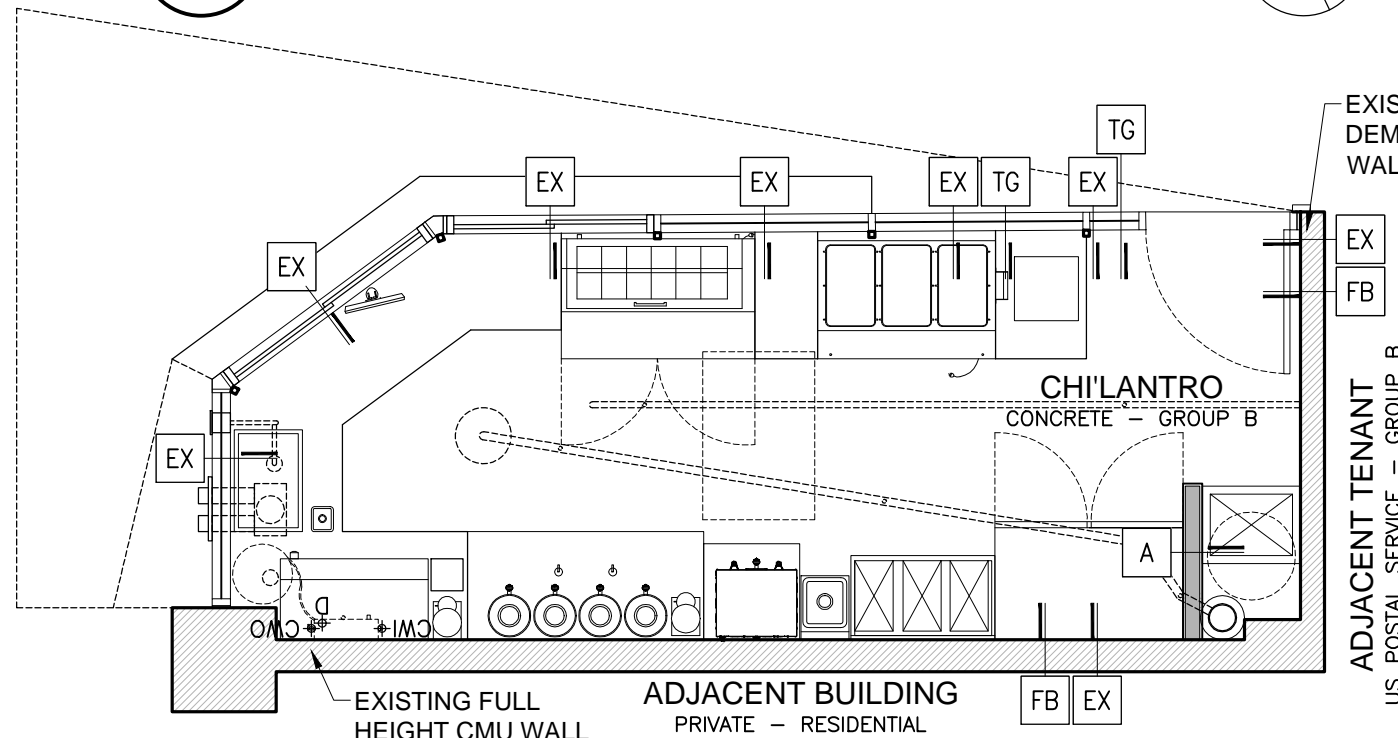
4 PROPOSED ROOF PLAN  
1/4"=1'-0"



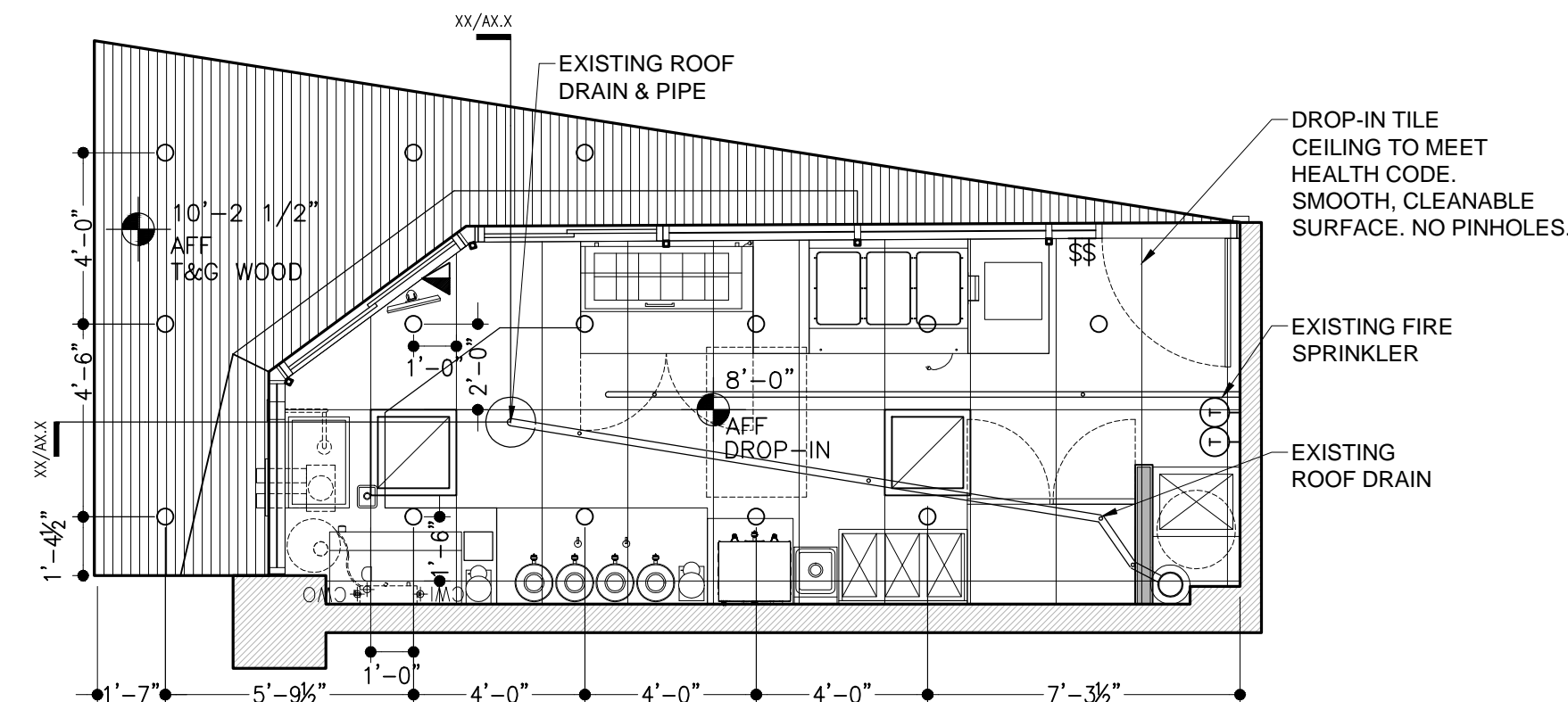
6 GREASE TRAP LOCATION  
1/4"=1'-0"



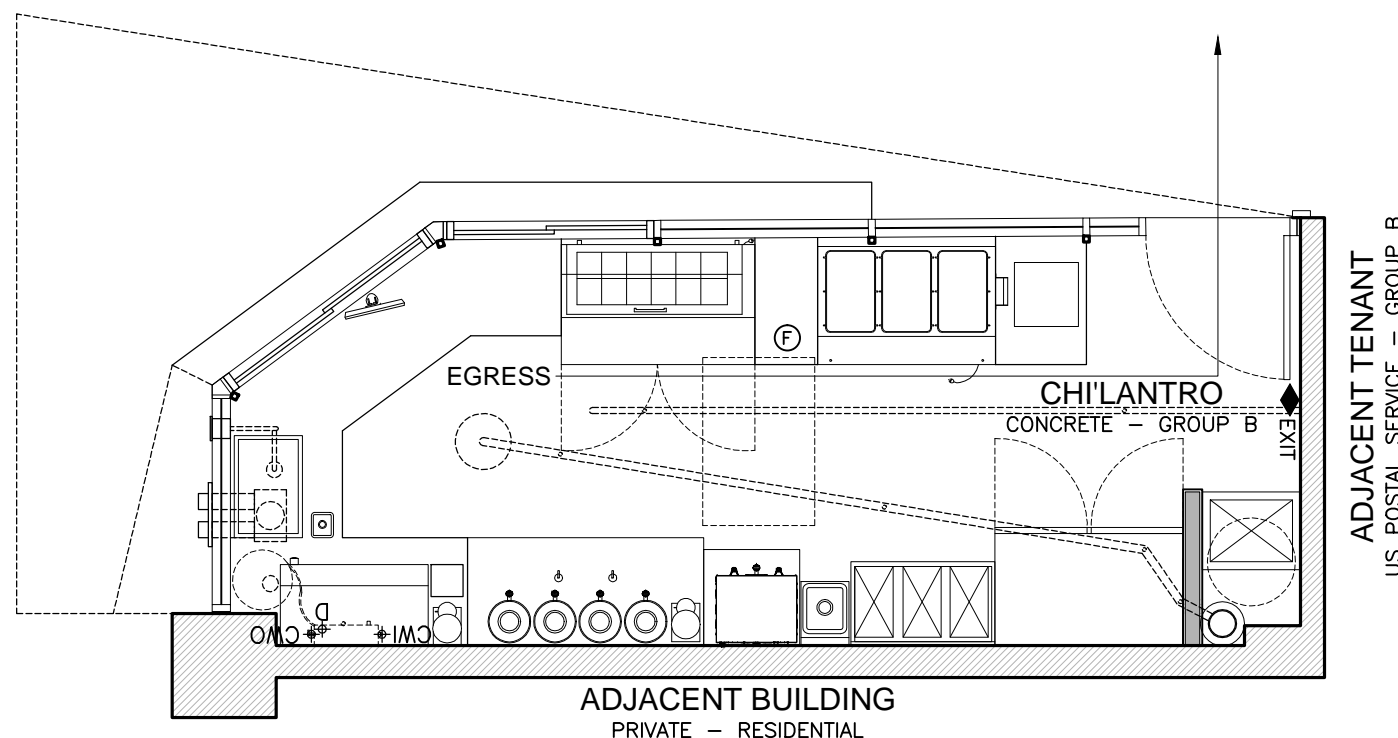
2 PROPOSED FLOOR PLAN  
1/4"=1'-0"



3 PROPOSED WALLS & PARTITIONS  
1/4"=1'-0"



5 PROPOSED REFLECTED CEILING PLAN  
1/4"=1'-0"



7 PROPOSED FIRE EGRESS PLAN  
1/4"=1'-0"

## GENERAL NOTES

- OCCUPANCY: Group B
- TYPE OF CONSTRUCTION: Type IIA (Existing)
- SQUARE FOOTAGE: 181sqft
- SPRINKLERS: Yes (Existing)
- FIRE ALARMS: No
- EMERGENCY LIGHTING: Yes
- NUMBER OF EXITS REQUIRED: 1
- NUMBER OF EXITS PROVIDED: 1
- NUMBER OF FLOORS: 1
- FLOOR AND SUITE NUMBER: Ground Floor Suite 175

## SAFETY & ACCESS NOTES

- Bottom of all entrance doors are required to have a smooth uninterrupted surface to allow the door to be opened by a wheelchair footrest without creating a trap or hazardous condition.
- All hand activated door opening hardware is required to be centered between 30" and 40" a.f.f.
- All latching and locking doors in a path of travel are to be operable with a single effort by lever type hardware, panic bars, push-pull activating bars or other hardware.
- Thresholds shall be no more than 1/2" high.
- All doors exposed to unconditioned space shall be weather stripped at the head, sill, and jamb.
- Provide a floor or landing not more than 1/2" below the threshold on both sides of exit doors.
- Exit doors shall be operable from the inside without the use of a key or any special knowledge or effort.
- Door hardware shall comply with ansi a117.1-1986 and the elimination of architectural barriers act of texas.
- The maximum effort to operate doors cannot exceed 8.5 pounds for exterior doors and 5 pounds for interior doors. Compensating devices or automatic door operators may be utilized to meet the requirements. Adjust doors as necessary to meet the requirements.
- Fire barrier between Chi'Lantro and adjacent units to be min. 2 hr. rating, see IBC table 720.1 (1) and 720.1 (2).
- Side lights within 2 feet of doors in the closed position shall be tempered. Reference IBC 2406.4 hazardous locations.

## EQUIPMENT NOTES

- SEE MECHANICAL/ELECTRICAL/PLUMBING DRAWINGS.

## EQUIPMENT LIST

- A. Reach-In Refrigerator
- B. Refrigerated Cold Line
- C. Hot Food Serving Counter
- D. Three Compartment Sink w/ Drying Rack Above and Splash Guards
- E. Mop Sink
- F. Hand Wash Sink w/ 12" Splash Guards
- G. La Marzocco Linea Espresso Machine
- H. Mazzer Major Espresso Grinder
- J. Curtis Twin Coffee Brewer
- K. Knock Box
- L. Mahikoeng Kenia Grinder
- M. OptiPure Water Filtration System w/ Bypass
- N. Pitcher Rinser
- P. Point of Sale
- Q. Water Heater Above Mop Sink
- R. Ice Well
- S. Ice Machine
- T. Kegerator for Cold Brew Coffee
- U. Tortilla Press
- V. Coffee Server

## LEGEND

- 1. NEW PARTITION/WALL KEY
- 2. EXISTING PARTITION/WALL KEY
- 3. FIRE BARRIER - MIN. 2 HR. RATING
- 4. TEMPERED GLASS SIDE LIGHT
- 5. INTERIOR ELEVATION KEY
- 6. WINDOW SCHEDULE KEY
- 7. EXISTING WINDOW SCHEDULE KEY
- 8. DOOR SCHEDULE KEY
- 9. EXISTING DOOR SCHEDULE KEY

## RCP NOTES

- CEILING HEIGHTS ARE BASED OFF OF F.F. ELEVATIONS.
- CEILINGS OVER OPEN FOOD, ICE, SODA FOUNTAINS, WARE WASHING, RESTROOMS AND BARS MUST MEET CONSTRUCTION CRITERIA AND BE SMOOTH, DURABLE, NONABSORBENT, AND CLEANABLE.
- PROVIDE LIGHTS WITH WET LOCATION UL SPECS.
- SEE ELECTRICAL DRAWINGS.

## LEGEND

- TELEPHONE/DATA OUTLET
- SINGLE-POLE SWITCH
- WET RECESSED DOWNLIGHT FIXTURE
- THERMOSTAT
- CEILING AIR HANDLER

## EGRESS NOTES

- CURRENTLY ADOPTED EGRESS CODE: 2012 International Fire Code (Ordinance # 20130606-092, effective 09-16-13) (Checklist- Section 105.4.2 effective 07-01-13)
- GROUP B OCCUPANCY
- Occupancy loads indicated are typical and shall not exceed the maximum building occupancy load.
- Portable fire extinguishers shall be provided to meet requirements in 2012 International Fire Code.
- Emergency lighting shall be provided to meet requirements in 2012 International Fire Code.
- Exit Signs shall be edge-lit LED signs with integrated battery back-up power provided to meet requirements in 2012 International Fire Code.
- If a fire alarm system is to be provided, it shall be installed according to the applicable NFPA standards.

## LEGEND

- PORTABLE FIRE EXTINGUISHER
- EMERGENCY LIGHTING
- EXIT SIGN

MATT FAJUS ARCHITECTURE, LLC



900 East 6th St.  
Suite 100  
Austin, TX 78702  
TEL : 512 432 5137

www.mfarchitecture.com

CHI'LANTRO CONGRESS

823 CONGRESS, SUITE 175 | AUSTIN, TX | 78701

NOT FOR REGULATORY APPROVAL,  
PERMITTING, OR CONSTRUCTION.

PROJECT TITLE

SEAL

REVISIONS:

PROJECT NUMBER:  
1422

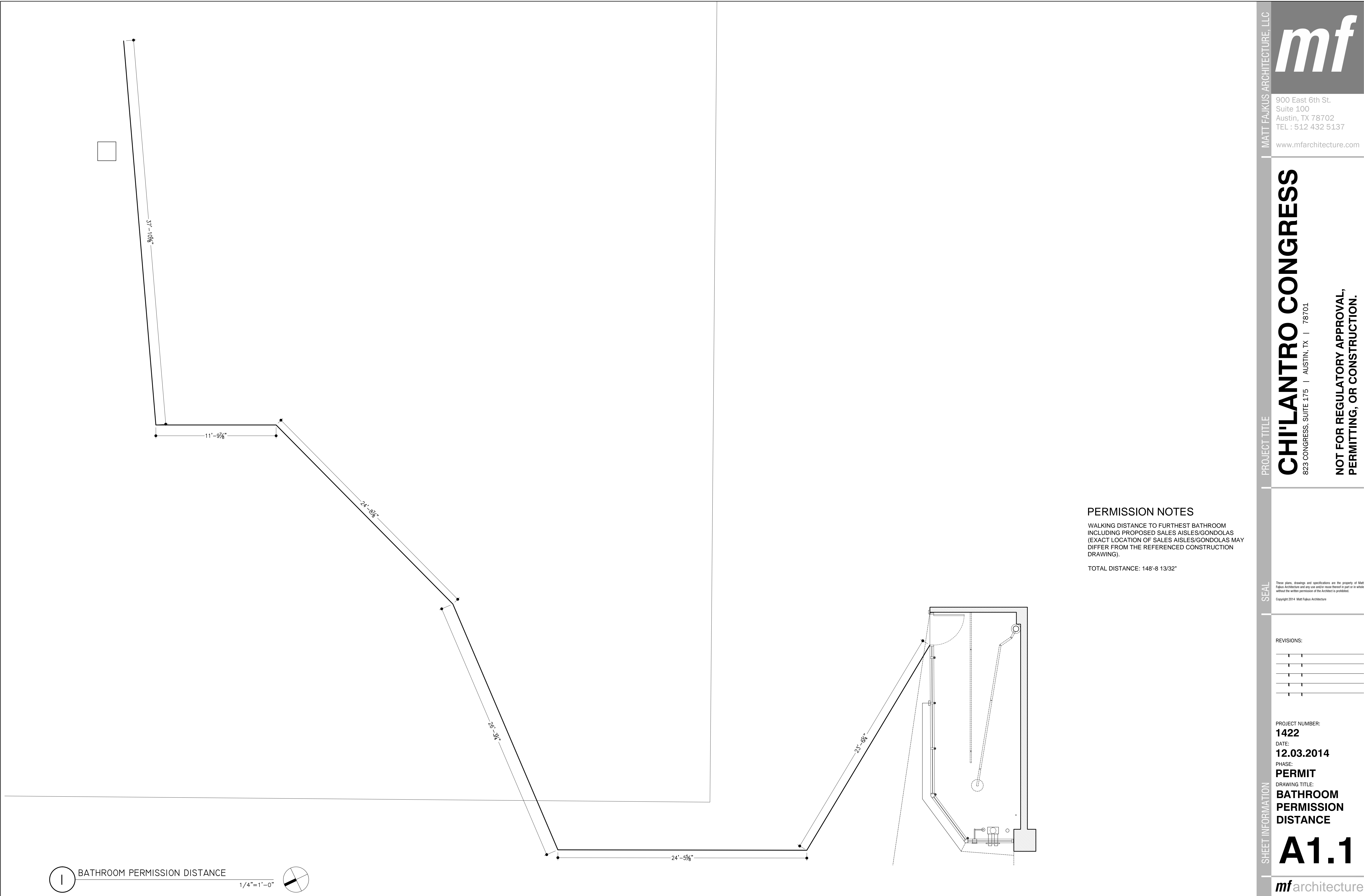
DATE:  
12.03.2014

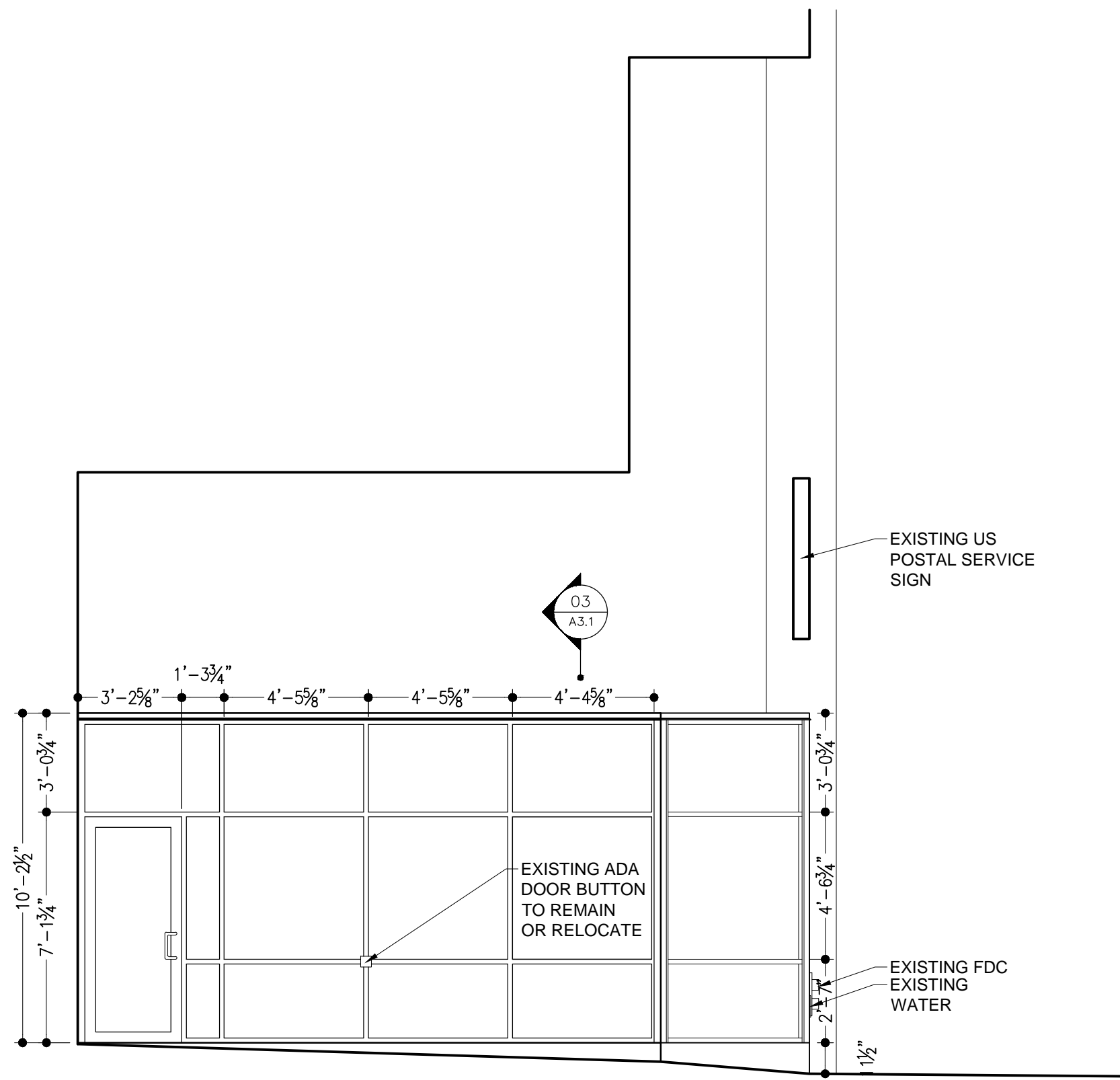
PHASE:  
PERMIT

DRAWING TITLE:  
SITE PLAN  
FLOOR PLANS  
RCP & NOTES

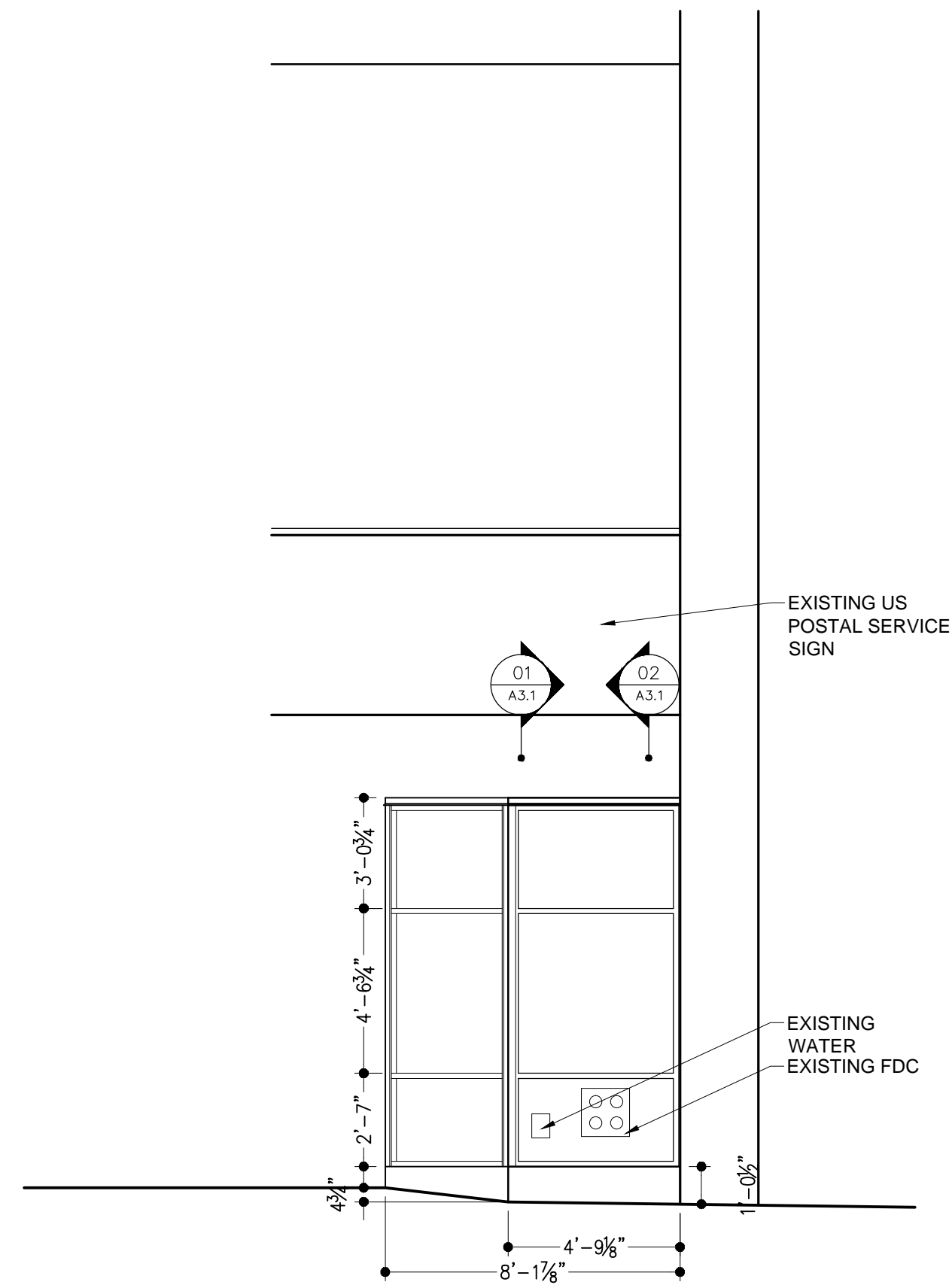
A1.0

mfarchitecture

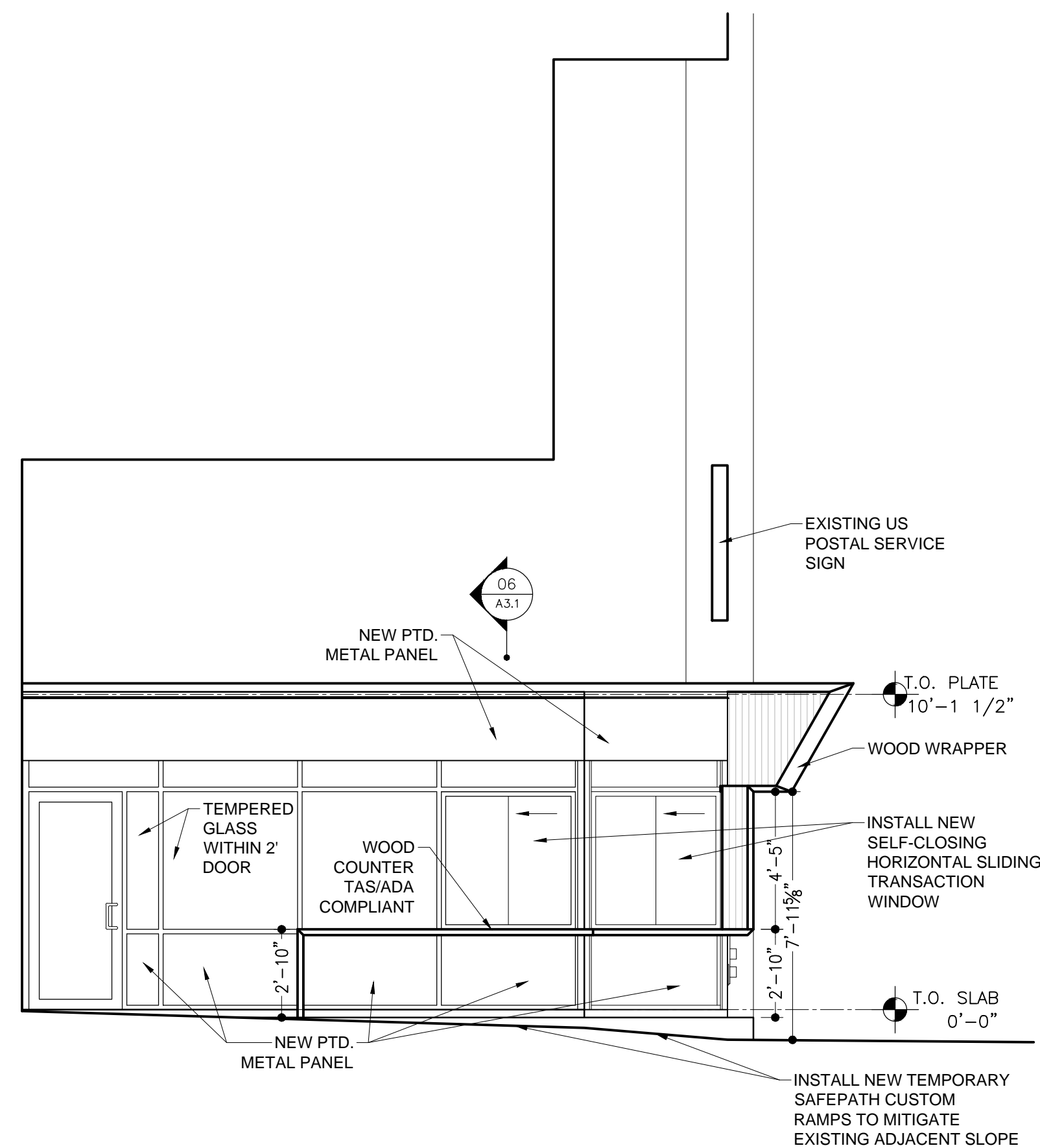




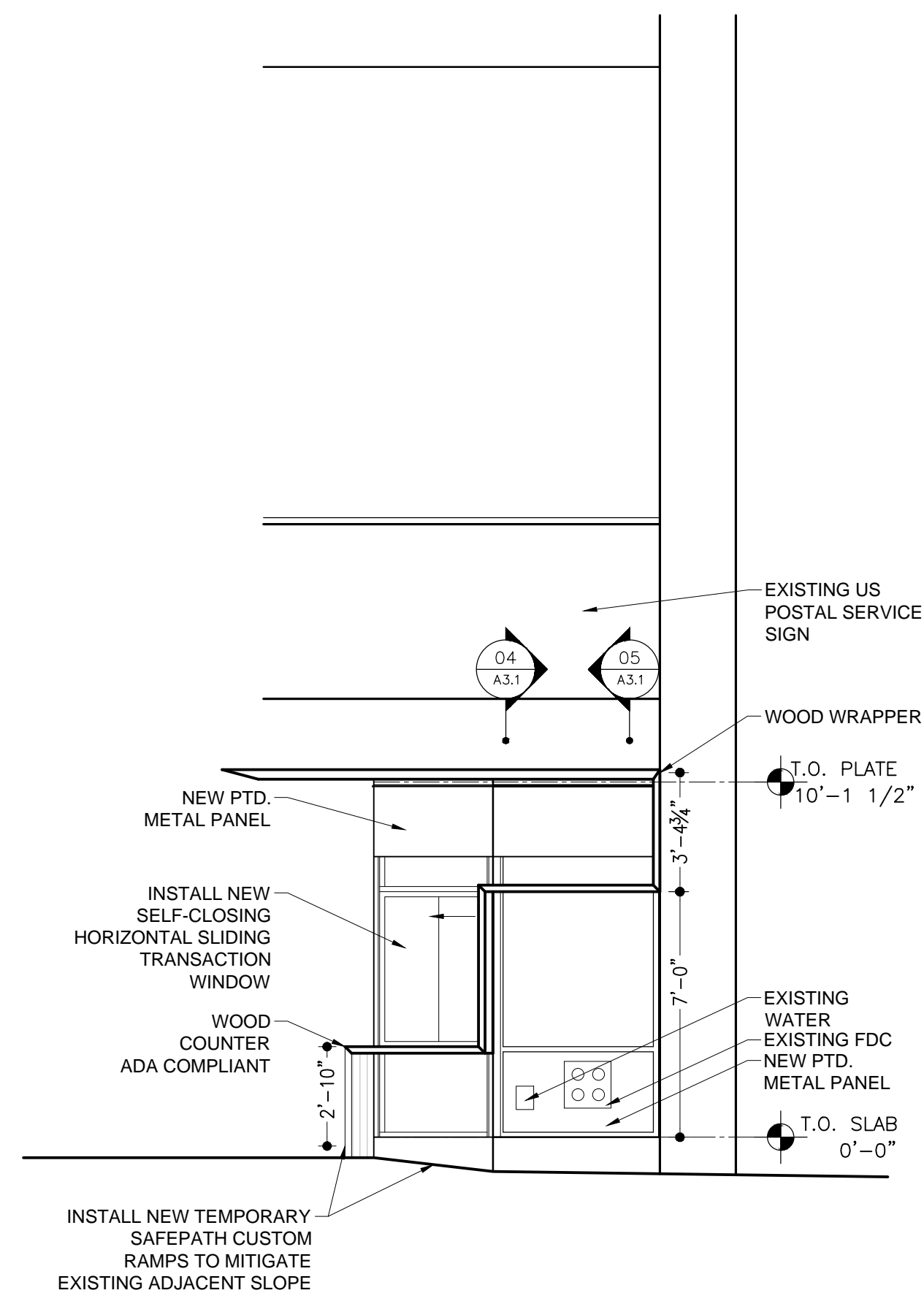
01 EXISTING NORTH ELEVATION  
1/4"=1'-0"



02 EXISTING WEST ELEVATION  
1/4"=1'-0"



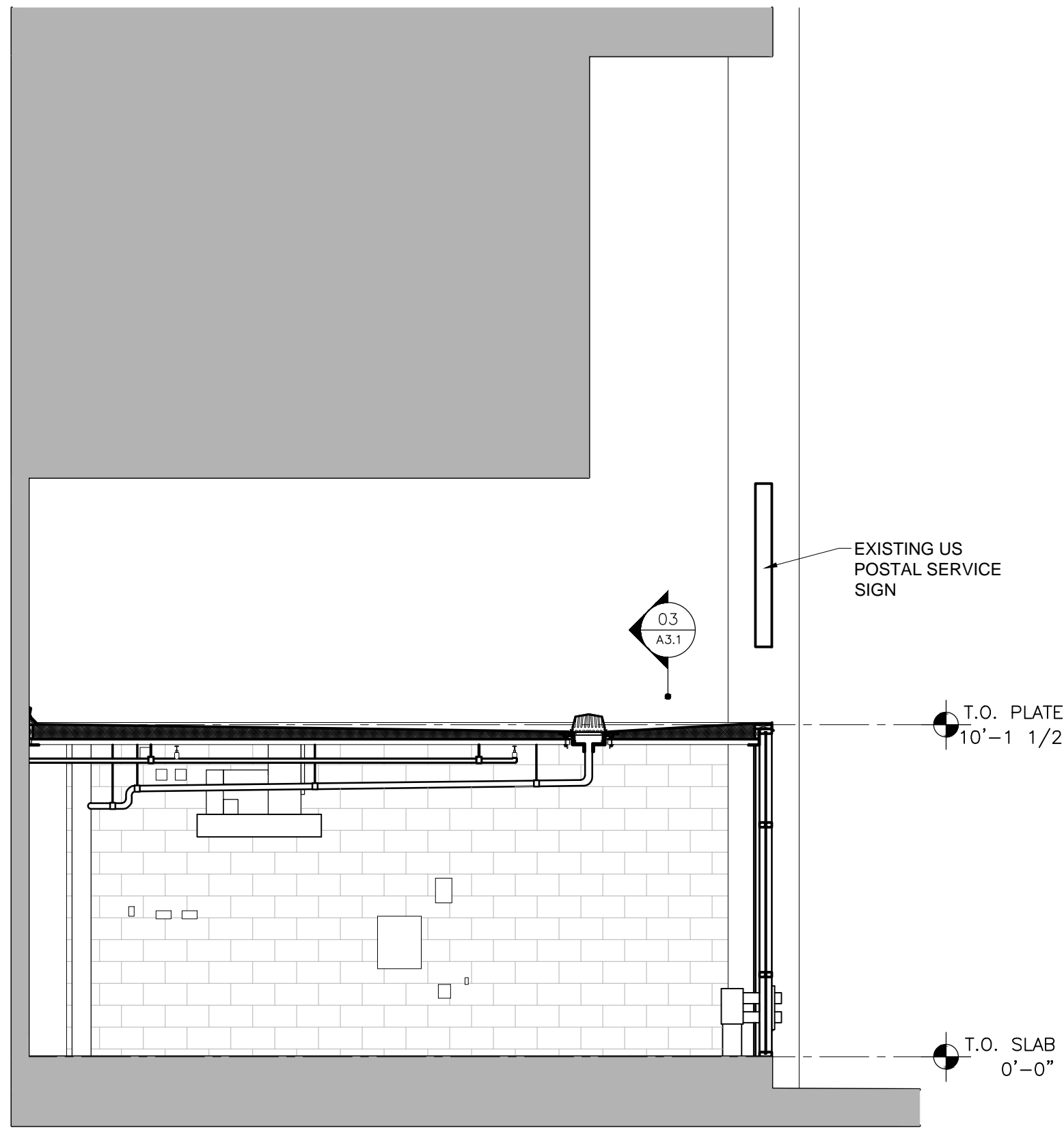
03 PROPOSED NORTH ELEVATION  
1/4"=1'-0"



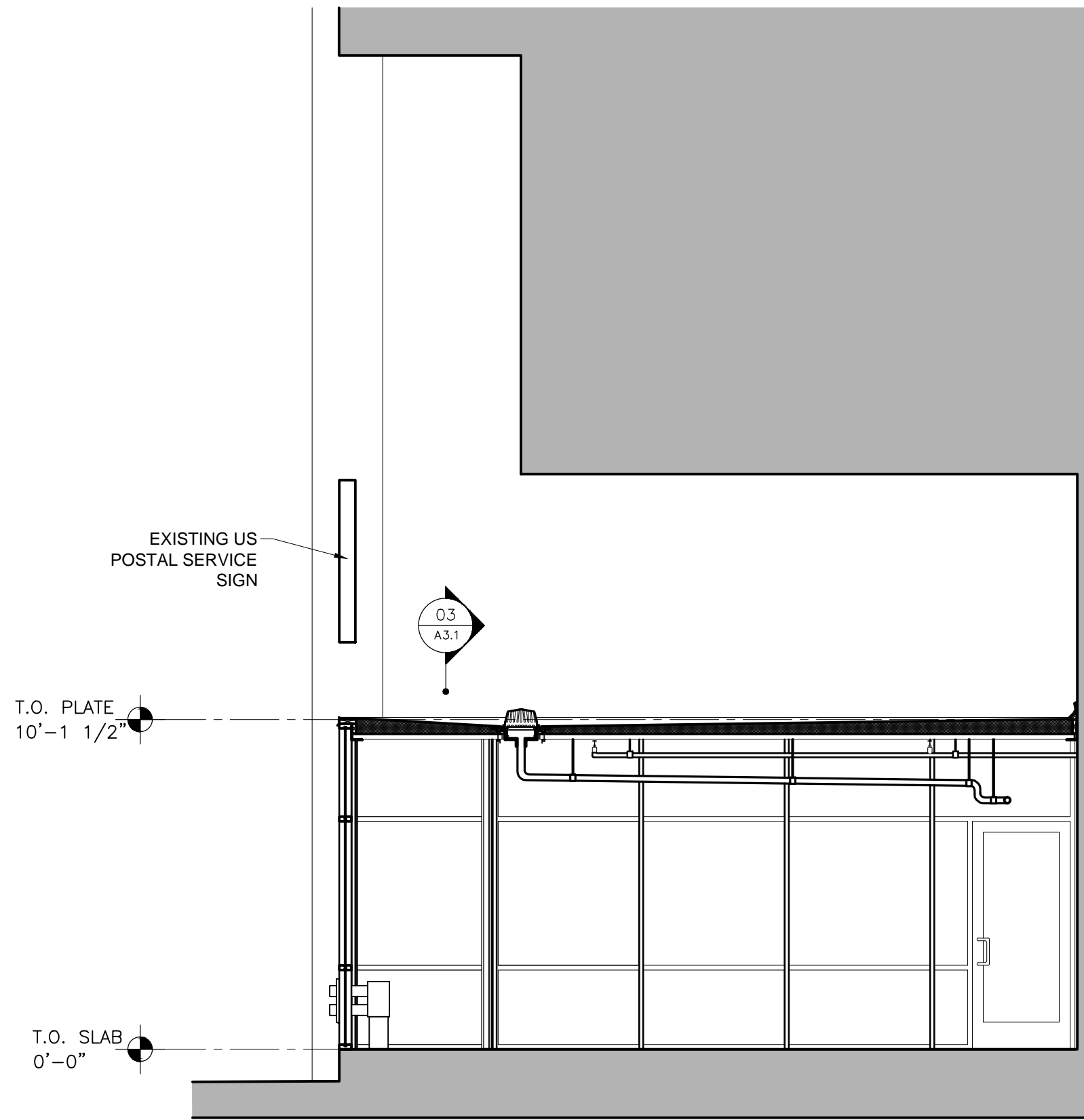
04 PROPOSED WEST ELEVATION  
1/4"=1'-0"

REVISIONS:

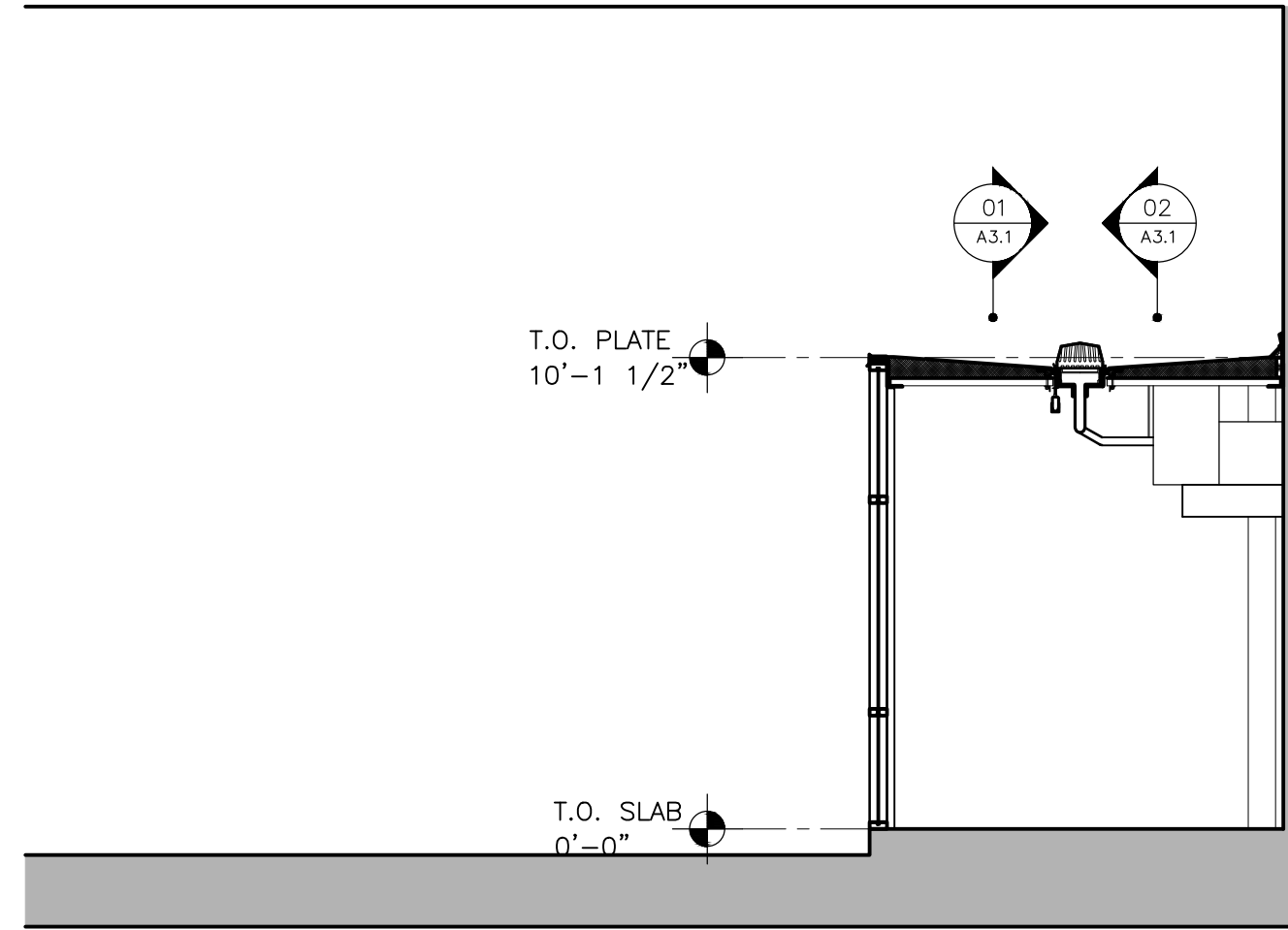
PROJECT NUMBER:  
**1422**  
DATE:  
**12.03.2014**  
PHASE:  
**PERMIT**  
DRAWING TITLE:  
**EXTERIOR ELEVATIONS**



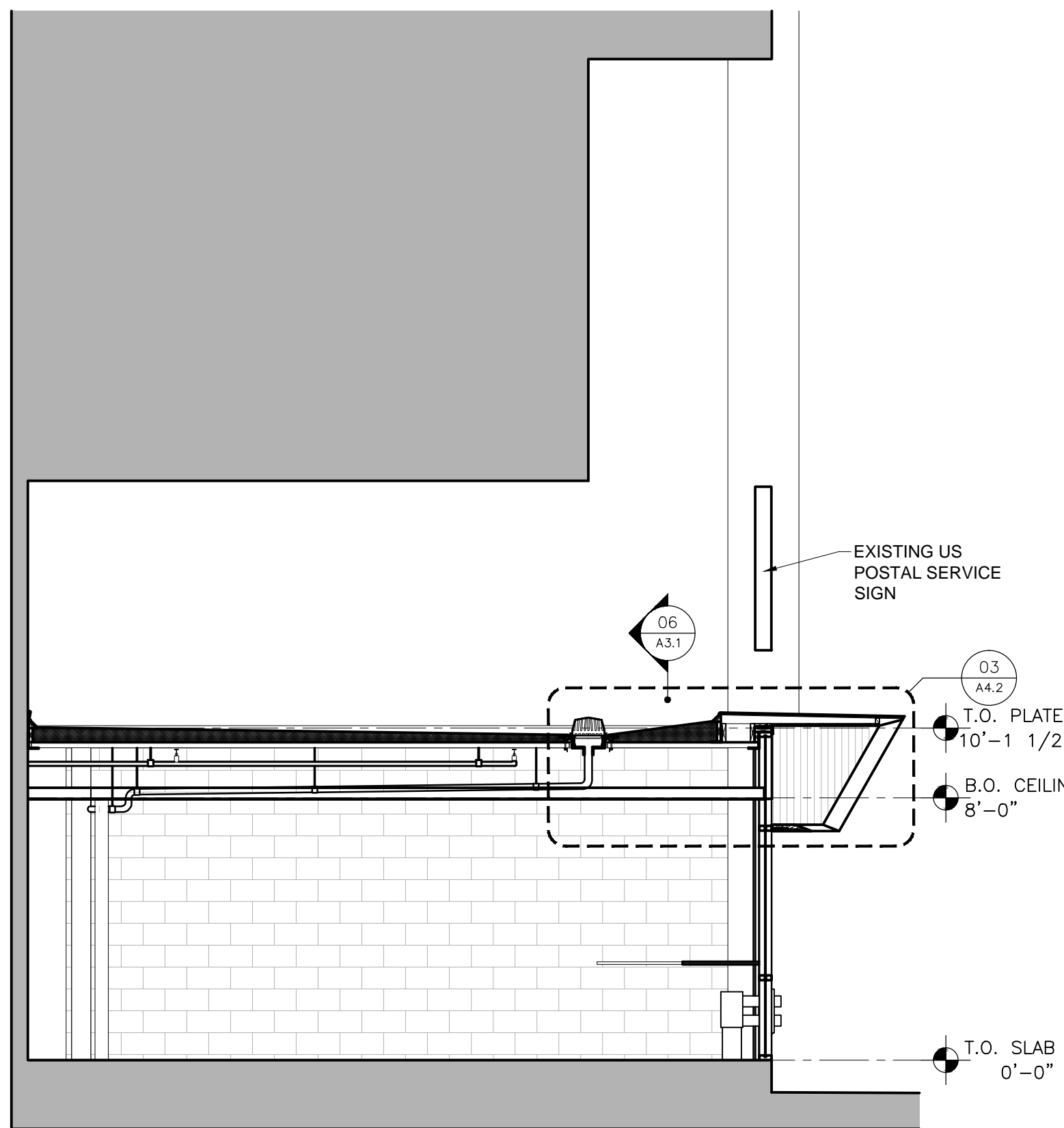
01 EXISTING BUILDING SECTION  
LOOKING SOUTH 1/4"=1'-0"



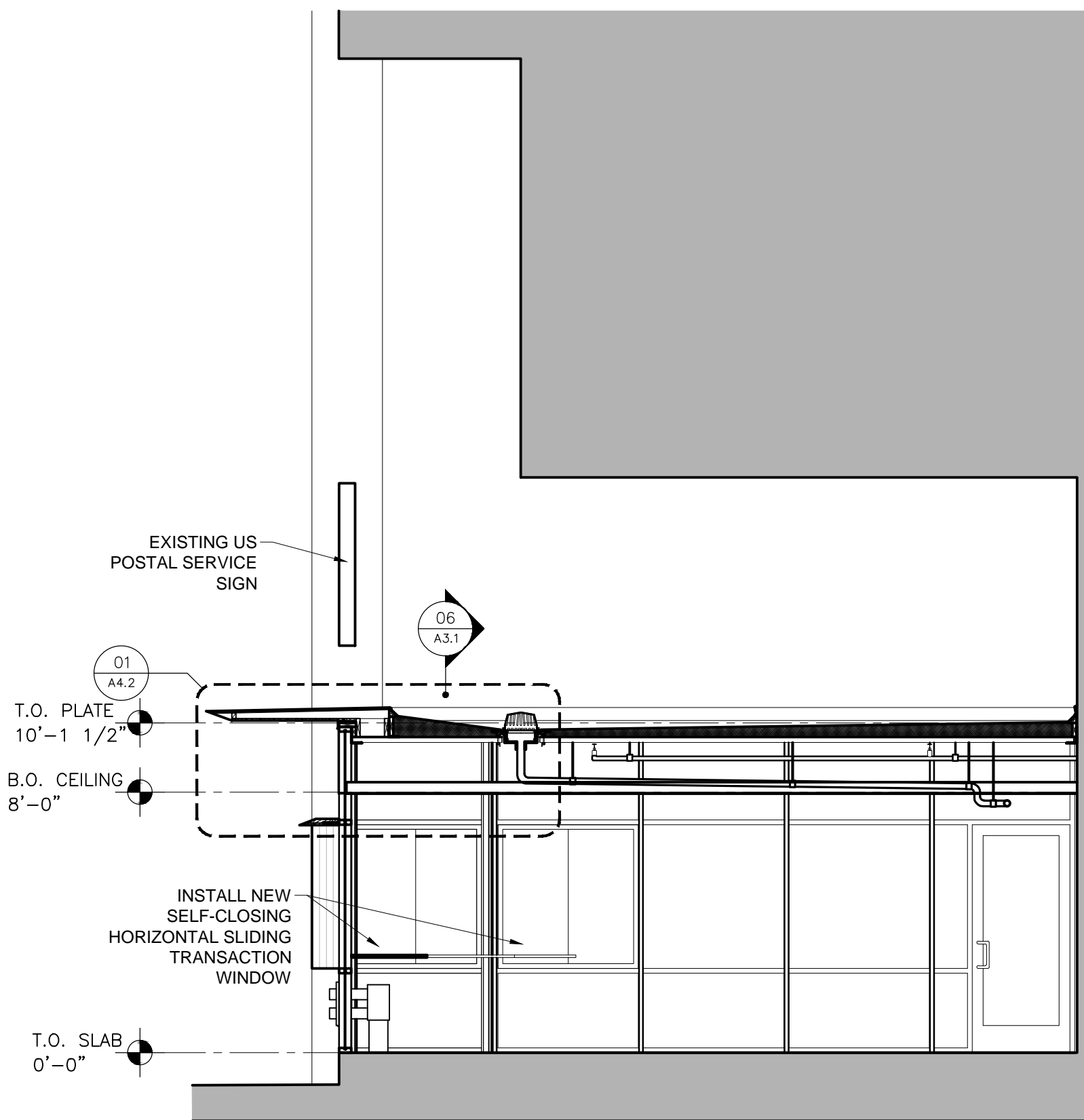
02 EXISTING BUILDING SECTION  
LOOKING NORTH 1/4"=1'-0"



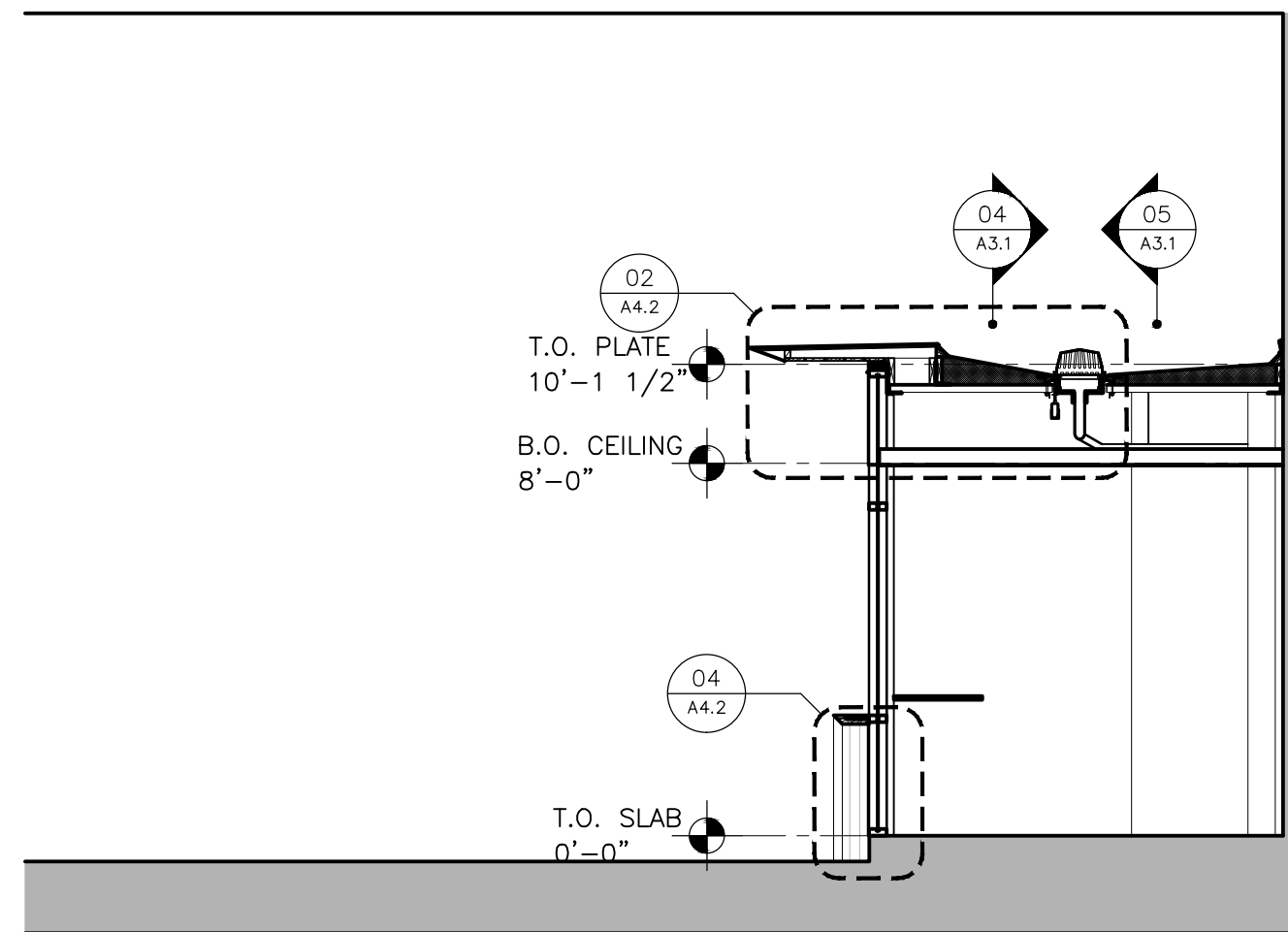
03 EXISTING BUILDING SECTION  
LOOKING EAST 1/4"=1'-0"



04 PROPOSED BUILDING SECTION  
LOOKING SOUTH 1/4"=1'-0"



05 PROPOSED BUILDING SECTION  
LOOKING NORTH 1/4"=1'-0"

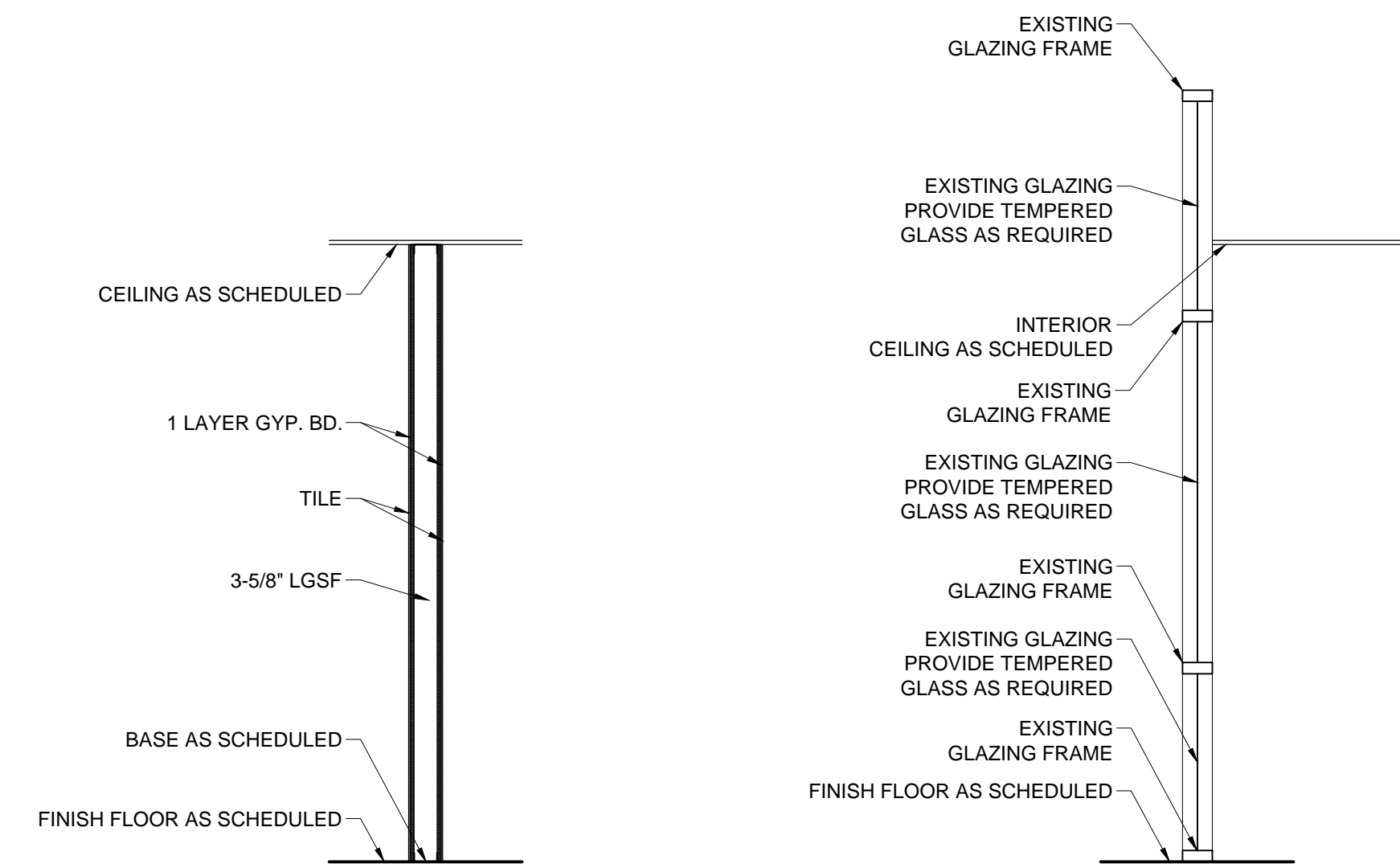


06 PROPOSED BUILDING SECTION  
LOOKING EAST 1/4"=1'-0"

REVISIONS:


PROJECT NUMBER:  
**1422**  
DATE:  
**12.03.2014**  
PHASE:  
**PERMIT**  
DRAWING TITLE:  
**BUILDING SECTIONS**

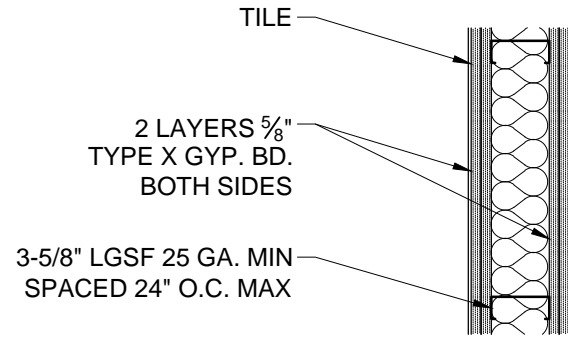




A TYPICAL ROOM PARTITION  
1/2"=1'-0"

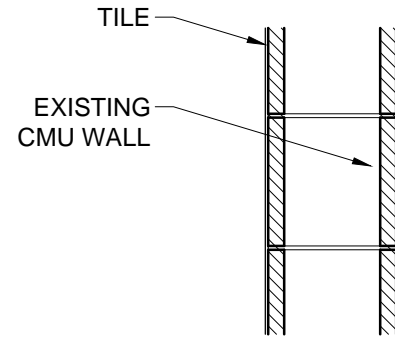
EX EXISTING GLAZED FACADE  
1/2"=1'-0"

TG GLAZED PARTITION  
LAB  
1/2"=1'-0"



EX EXISTING DEMISING WALL  
1/2"=1'-0"

FB FIRE BARRIER DETAIL - PLAN  
2HR DEMISING WALL  
NOTE: REFERENCE UL DESIGN U419  
1"=1'-0"



EX EXISTING PARTY WALL  
1/2"=1'-0"

FB FIRE BARRIER DETAIL  
EXISTING CMU WALL  
1"=1'-0"

## WALL & PARTITION NOTES

- PARTITION TYPE REFERENCES ARE LOCATED ON THE INTERIOR PARTITIONS FLOOR PLAN.
- CEILING HEIGHTS MAY VARY ON EITHER OR BOTH SIDES OF THE PARTITION. REFER TO FLOOR PLAN, REFLECTED CEILING PLAN AND CEILING FINISH NOTES FOR CEILING HEIGHTS.
- METAL STUDS SHALL BE SPACED AT 16" O.C. MAXIMUM, UNLESS NOTED OTHERWISE. LIGHT GAUGE STEEL FRAMING STUDS SPACED AT 16" O.C. MAXIMUM SHALL BE USED WHERE SPECIFIED OR DETAILED.
- UNLESS INDICATED OTHERWISE, ALL GYPSUM BOARD IS TO BE 5/8" THICK, FIRE RESISTANT.
- PARTITION TYPE REFERENCES ARE CALLED ON THE FLOOR PLAN AND DO NOT INCLUDE THE APPLIED FINISHES. REFER TO PLAN FOR ROOM FINISH REFERENCES.
- ALL JOINTS IN GYPSUM BOARD SURFACES SHALL BE TAPED AND FLOATED, INCLUDING FIRE-RATED PARTITIONS, UNRATED PARTITIONS, EXPOSED SURFACES, CONCEALED SURFACES, AND SURFACES ABOVE THE CEILINGS.
- UNLESS INDICATED OTHERWISE, ALL SOUND ATTENUATION INSULATION SHALL BE CONTINUOUS FOR THE FULL HEIGHT OF THE PARTITION AND 3" THICK.
- PARTITION TYPES AND DETAILS SHOWN HEREIN ARE TYPICAL. WHERE PARTITION TYPES OR DETAILS VARY ONLY SLIGHTLY FROM THE TYPICAL, THE ABBREVIATION "SIM" SHALL BE USED ADJACENT TO THE PARTITION TYPE REFERENCE OR DETAIL DETAIL REFERENCE. PARTITIONS OR DETAILS NOT SIMILAR SHALL BE CONSTRUCTED IN A LOGICAL MANNER USING THE PRINCIPLES EVIDENT IN THE TYPICAL PARTITION TYPES AND DETAILS.
- REFER TO INTERIOR DETAILS, SECTIONS AND MISC DETAILS ON THE DRAWINGS FOR SPECIAL PARTITION CONDITIONS.
- WHERE TILE IS INDICATED, REPLACE GYP. BD. WITH 5/8" CEMENTITIOUS PANEL WHICH HAS BEEN CERTIFIED FOR "WET NAIL" APPLICATION.
- USE 3-5/8" 362S162-43 LGSF JOISTS AT L/240 FOR DROP CEILING FRAMING SPACED 16" ON CENTER THROUGHOUT.
- SUSPEND FROM ROOF STRUCTURE USING TYPICAL #8 VERTICAL HANGERS PLACED AT 1/3 AND 2/3 POINTS, EVERY 32", PERPENDICULAR TO JOISTS WHERE NECESSARY USING BEST PRACTICES AT CLOUD CEILINGS.
- SUSPEND DROP IN TILE CEILING USING TYPICAL HANGERS AND SPACING WHERE NECESSARY USING BEST PRACTICES.
- DROP IN TILE TO BE COMPATIBLE WITH HEALTH REQUIREMENTS.
- FIRE BARRIER BETWEEN RESTAURANT SPACE AND ADJACENT UNITS TO BE MIN. 2 HR. RATING. SEE IBC TABLE 720.1 (1) AND 720.1 (2).



900 East 6th St.  
Suite 100  
Austin, TX 78702  
TEL : 512 432 5137

www.mfarchitecture.com

CHI'LANTRO CONGRESS

823 CONGRESS, SUITE 175 | AUSTIN, TX | 78701

NOT FOR REGULATORY APPROVAL,  
PERMITTING, OR CONSTRUCTION.

SEAL

These plans, drawings and specifications are the property of Matt Fajkus Architecture and any use and/or reuse thereof is part or in whole without the written permission of the Architect is prohibited.

Copyright 2014 Matt Fajkus Architecture

REVISIONS:

1	
2	
3	
4	

PROJECT NUMBER:

1422

DATE:

12.03.2014

PHASE:

PERMIT

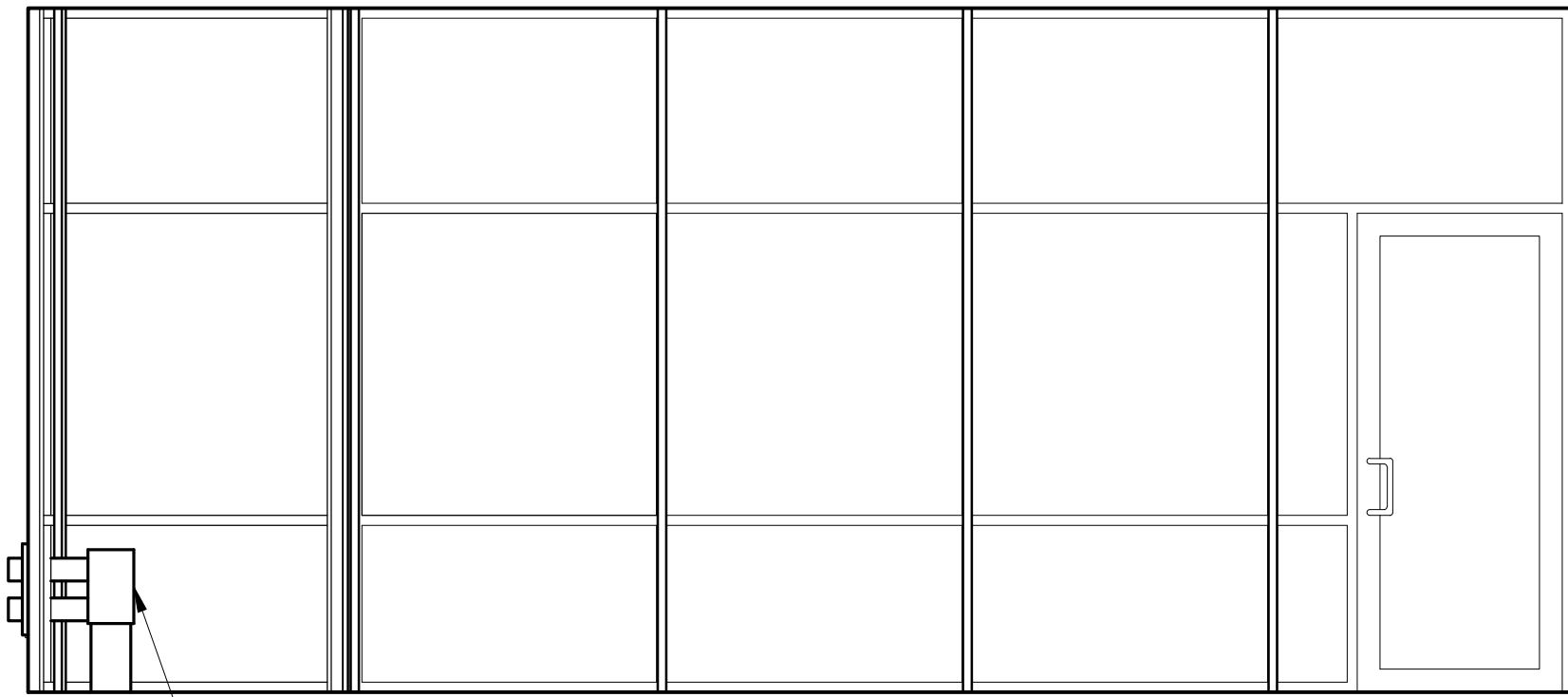
DRAWING TITLE:

WALL TYPES  
AND NOTES

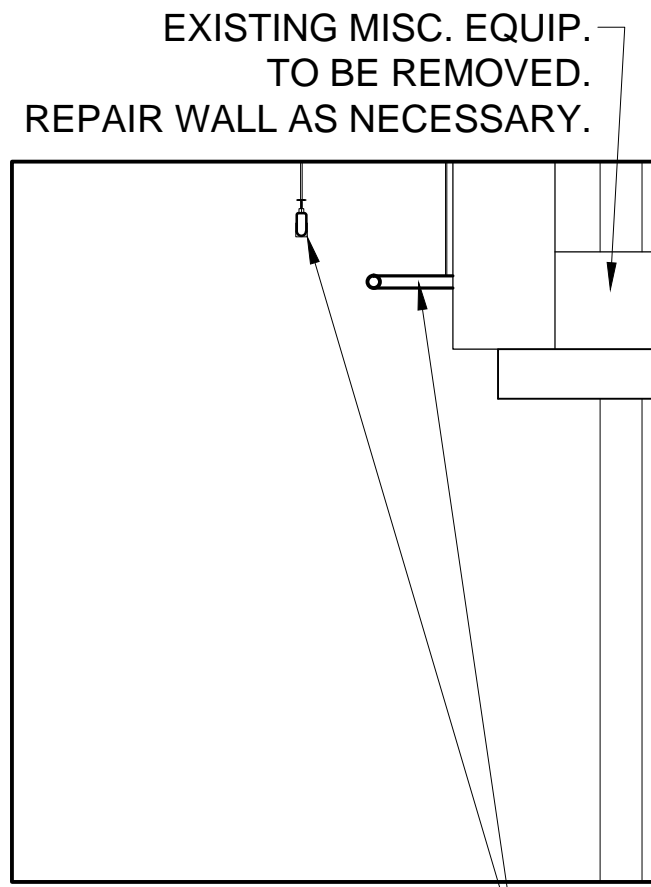
A4.1

mfarchitecture

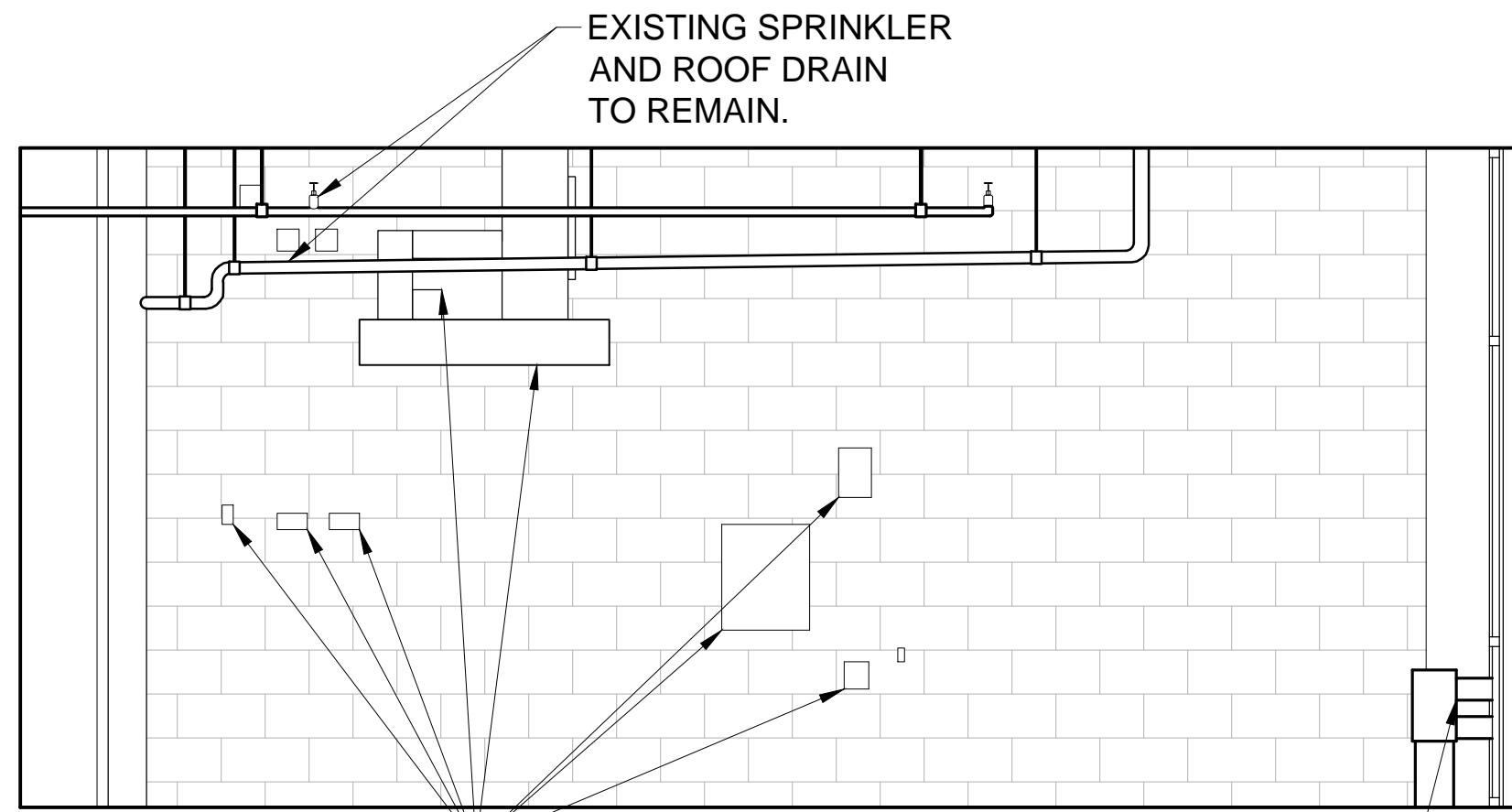




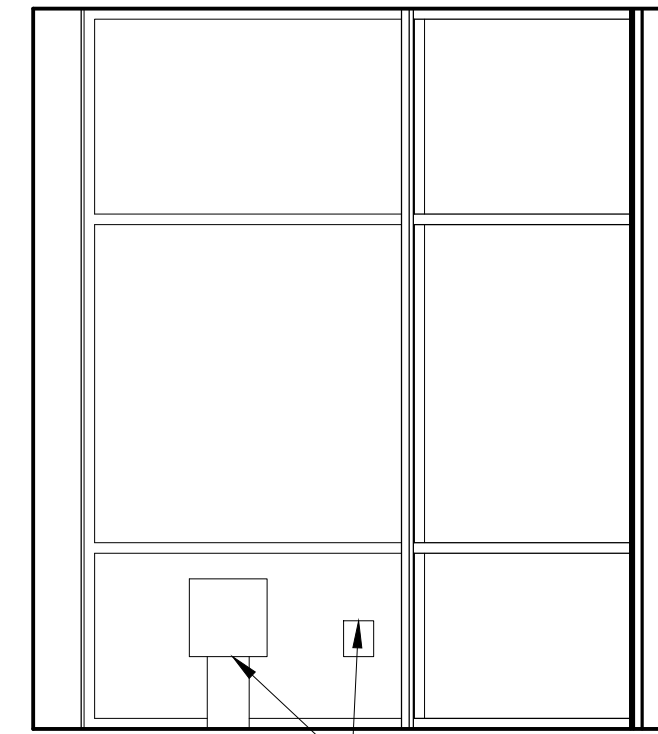
1 EXISTING ELEVATION: NORTH  
3/8"=1'-0"



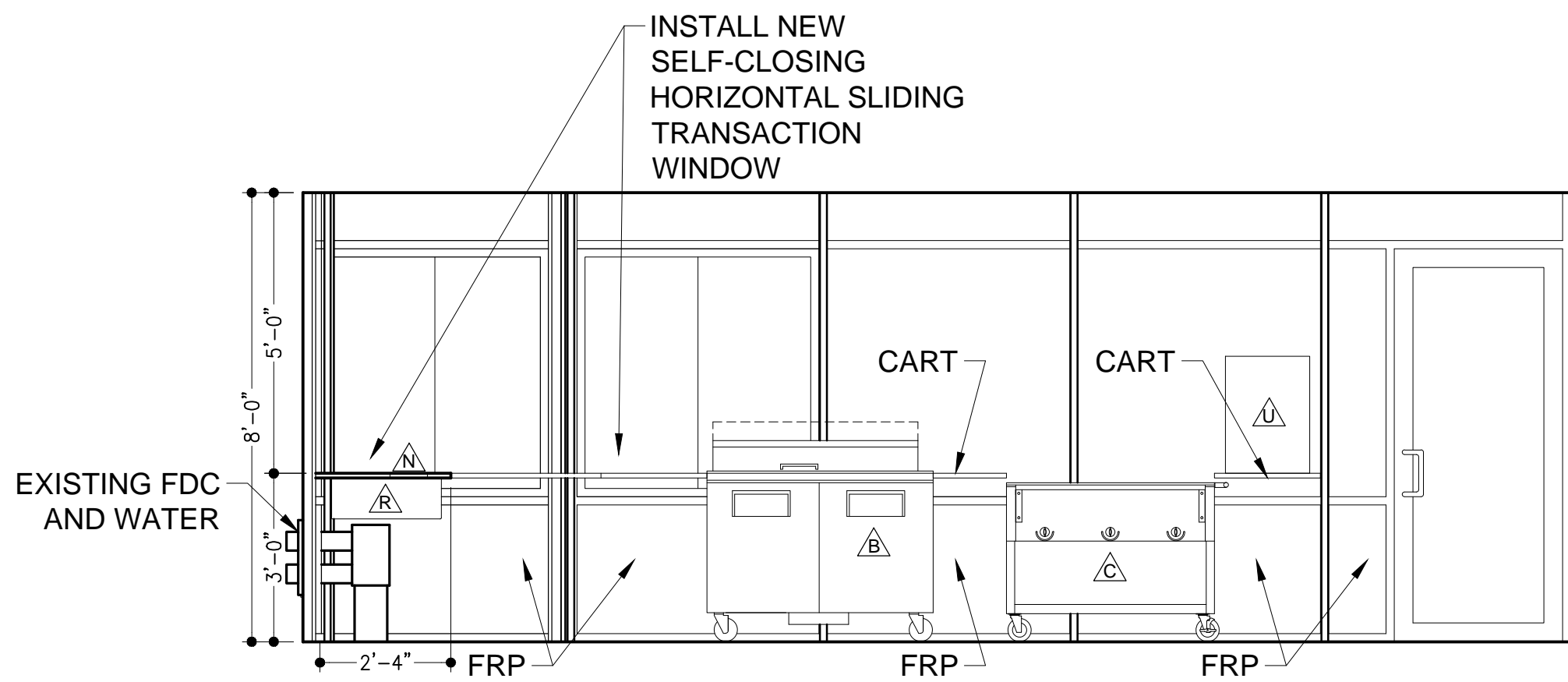
2 EXISTING ELEVATION: EAST  
3/8"=1'-0"



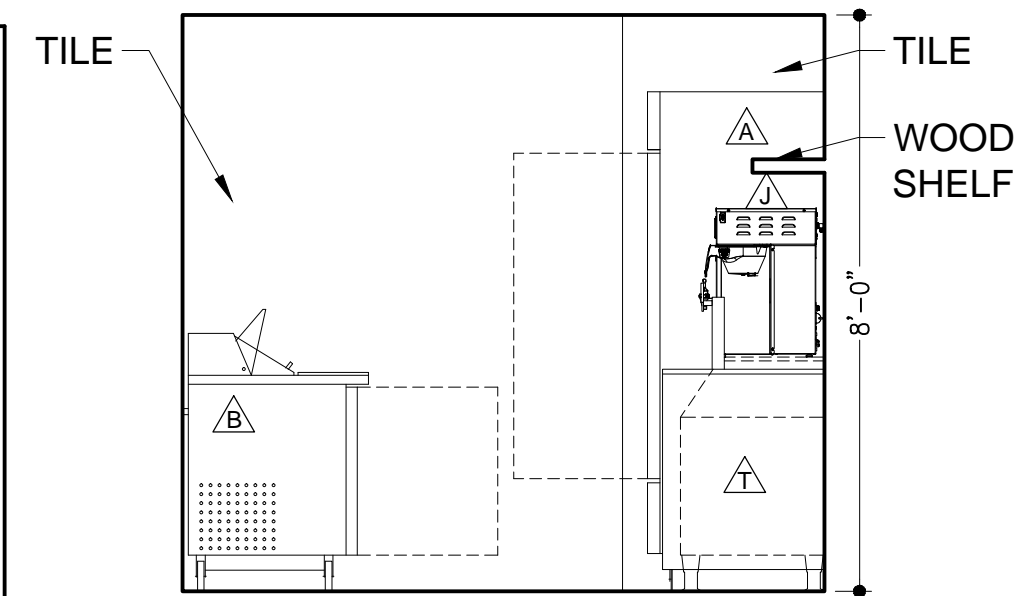
3 EXISTING ELEVATION: SOUTH  
3/8"=1'-0"



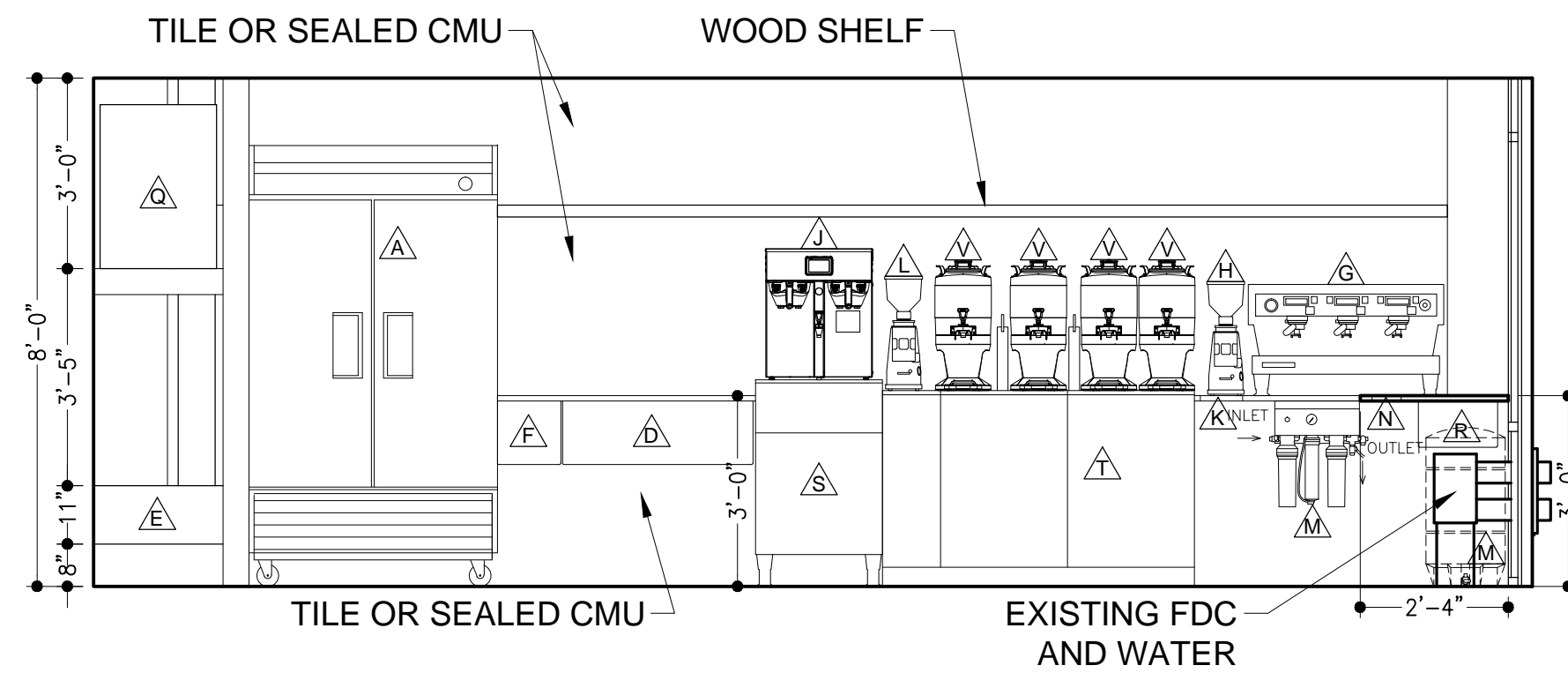
4 EXISTING ELEVATION: WEST  
3/8"=1'-0"



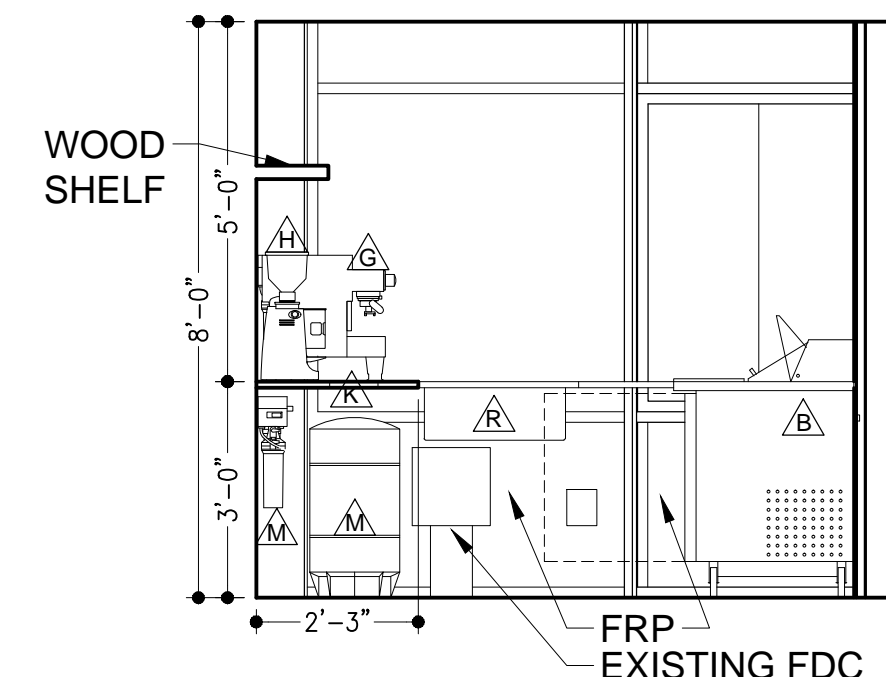
5 PROPOSED ELEVATION: NORTH  
3/8"=1'-0"



6 PROPOSED ELEVATION: EAST  
3/8"=1'-0"



7 PROPOSED ELEVATION: SOUTH  
3/8"=1'-0"



8 PROPOSED ELEVATION: WEST  
3/8"=1'-0"

## EQUIPMENT LIST

- A. Reach-In Refrigerator
- B. Refrigerated Cold Line
- C. Hot Food Serving Counter
- D. Three Compartment Sink w/ Drying Rack Above and Splash Guards
- E. Mop Sink
- F. Hand Wash Sink w/ 12" Splash Guards
- G. La Marzocco Linea Espresso Machine
- H. Mazzer Major Espresso Grinder
- J. Curtis Twin Coffee Brewer
- K. Knock Box
- L. Mahlkoenig Kenia Grinder
- M. OptiPure Water Filtration System w/ Bypass
- N. Pitcher Rinser
- P. Point of Sale
- Q. Water Heater Above Mop Sink
- R. Ice Well
- S. Ice Machine
- T. Kegerator for Cold Brew Coffee
- U. Tortilla Press
- V. Coffee Server

**mf**

900 East 6th St.  
Suite 100  
Austin, TX 78702  
TEL : 512 432 5137

www.mfarchitecture.com

**CHI'LANTRO CONGRESS**  
823 CONGRESS, SUITE 175 | AUSTIN, TX | 78701

NOT FOR REGULATORY APPROVAL,  
PERMITTING, OR CONSTRUCTION.

REVISIONS:

1	
2	
3	
4	

PROJECT NUMBER:

**1422**

DATE:

**12.03.2014**

PHASE:

**PERMIT**

DRAWING TITLE:

**INTERIOR  
ELEVATIONS**

**A5.1**

**mf**architecture