



Corridor Development Program

South Lamar Boulevard Guadalupe Street

Urban Transportation Commission
February 10, 2015



AUSTIN MOBILITY

Making mobility better, together.

2.10.15 Urban Transportation Commission

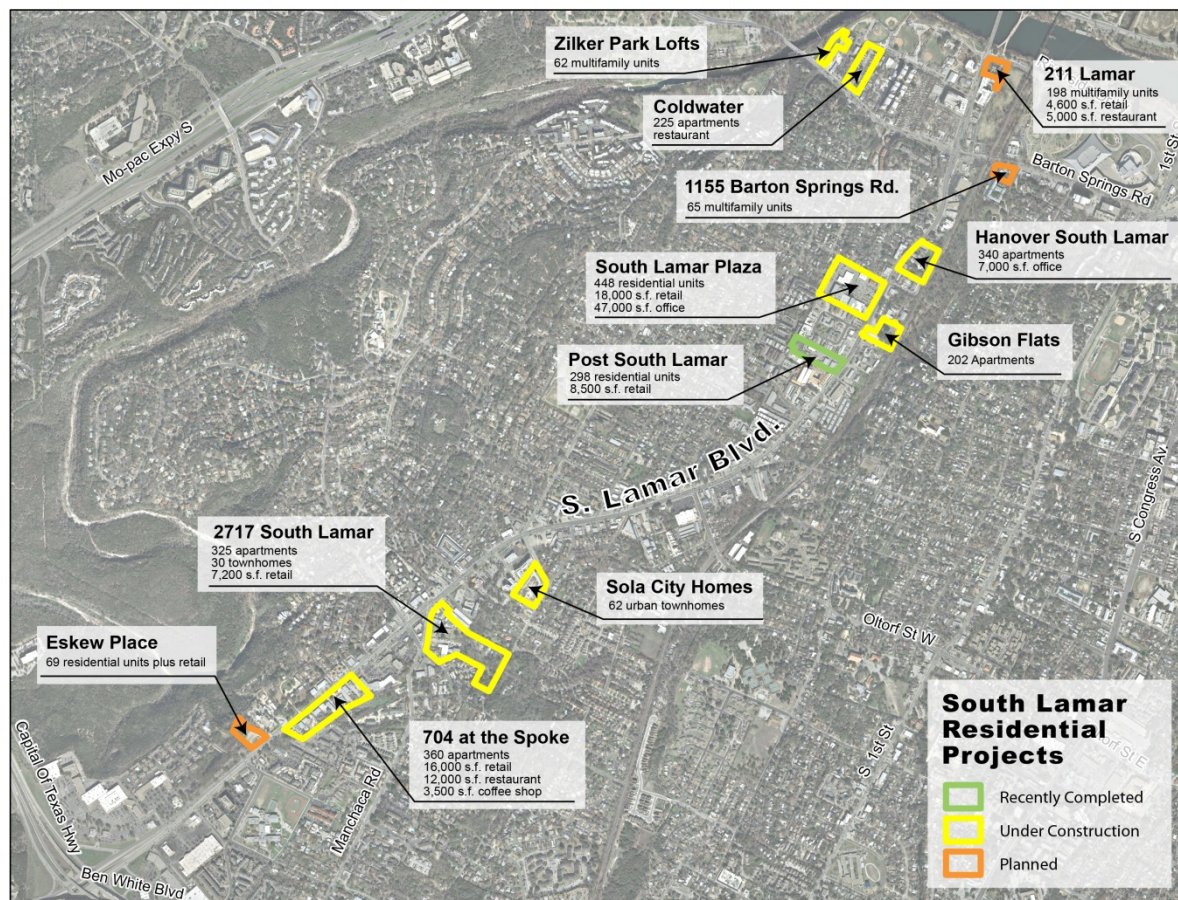


Corridor Development Program

- History
 - 2010 Bond funded 4 Corridor Studies
 - N. Lamar/Burnet
 - Riverside Drive
 - Airport Boulevard
 - FM 969 (E. MLK)
 - 2012 Bond partially funded improvements
 - Two corridor studies currently underway
 - South Lamar Boulevard
 - Guadalupe Street

South Lamar Corridor

Established by the 2012 Bond Program



Design multi-modal corridor for auto, transit, bike and pedestrians

Guadalupe Corridor

Established by the 2012 Bond Program



Corridor Development Program

Guiding Principles



DESIGNING STREETS FOR PEOPLE

People were the focus in 2013, as the City of Austin and our partners continued to update Austin's transportation system. Every transportation project happens in a neighborhood context, and Austin Transportation Department respects that context and the real people affected every day.

ATD advanced many initiatives over the course of the year to ensure that our roadways and transportation network serves the needs of all people. Austin residents and visitors need the ability to choose and safely use different modes at various times - walking, bicycling, transit, and driving.

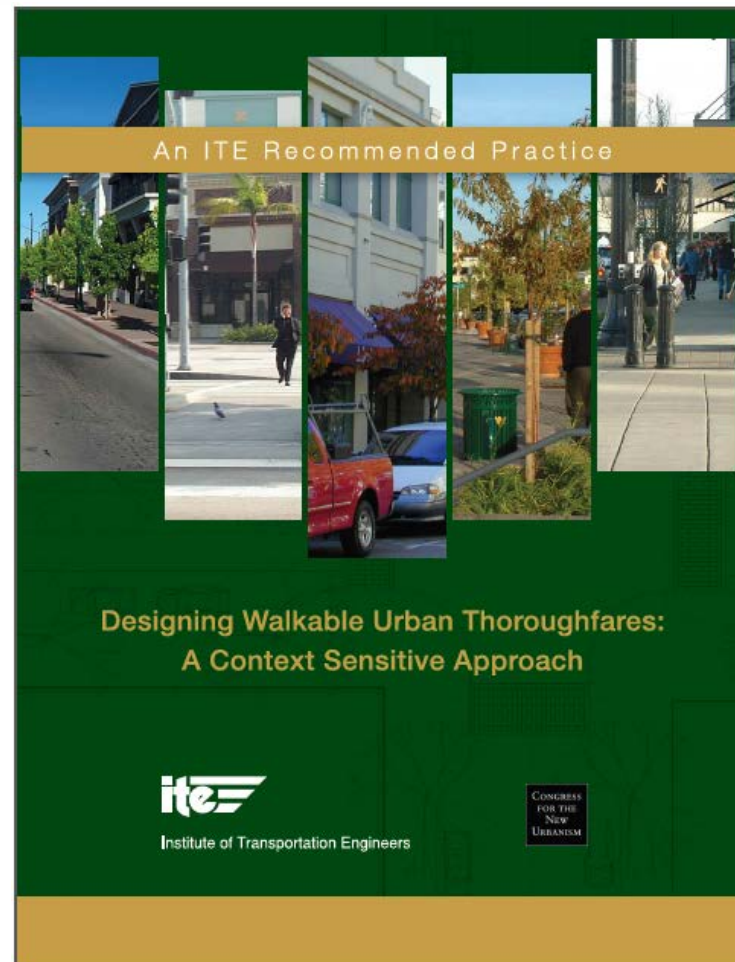
In its 2013 work program, ATD was guided by the specific documents recognized by City Council:

- **Designing Walkable Urban Thoroughfares:** A context-sensitive approach
Institute of Transportation Engineers/Congress for the New Urbanism
- **Urban Street Design Guide:** National Association of City Transportation Officials
- **Urban Bikeway Design Guide:** National Association of City Transportation Officials

Design multi-modal corridor for auto, transit, bike and pedestrians

Corridor Development Program

City Council Recognized Documents

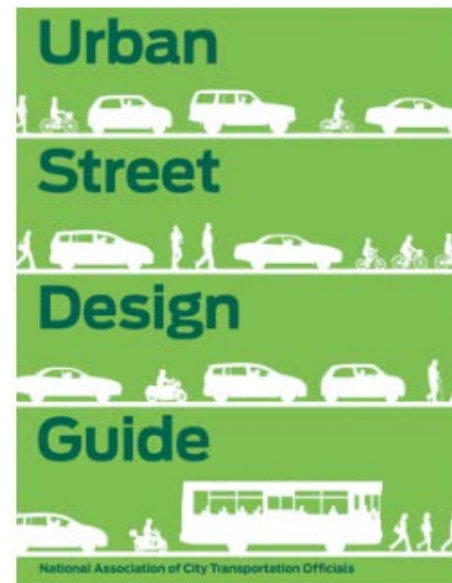
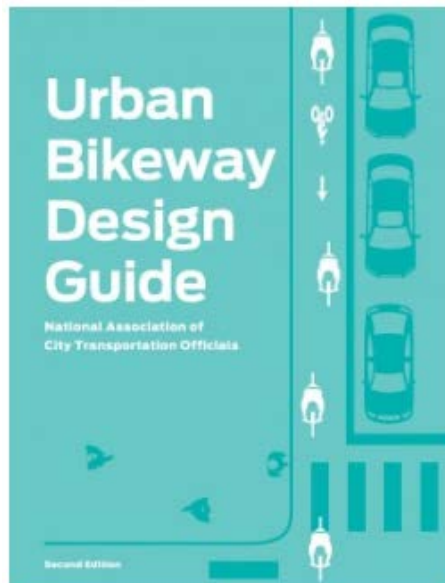


Corridor Development Program

City Council Recognized Documents



National Association of City Transportation Officials



Corridor Development Program

Guiding Principles

COMPLETE STREETS

In 2013, ATD proactively advanced a Complete Streets approach to transportation planning, street improvements and design. A "complete street" is a roadway designed and operated to provide a safe, efficient, and appealing travel experience for all users and modes of travel.

Looking toward a future of more compact development patterns, ATD has been planning ahead so that Austinites will be able to conveniently walk, drive, bike, and take transit between their homes, jobs and other destinations, in the years ahead. Small improvements on all add up. For a number of specific roadways and intersections, ATD implemented alternative designs to better facilitate the smooth movement of all travel modes, for example.

ATD also advanced conversations with City partners in 2012-13 about the vital impact of fully connected street networks. For example, the Department helped to define and discuss short-term, mid-range and long-range goals for connecting the designated Imagine Austin activity centers (see Growth Concept Map in Imagine Austin Comprehensive Plan, p. 103) via a complete network of roads, transit, sidewalks, trails, and bicycle infrastructure.

In December 2013, Austin City Council called for development of a Complete Streets Policy document. ATD prepared to lead this effort, in collaboration with other City departments and the Compact and Connected Priority Program Team.

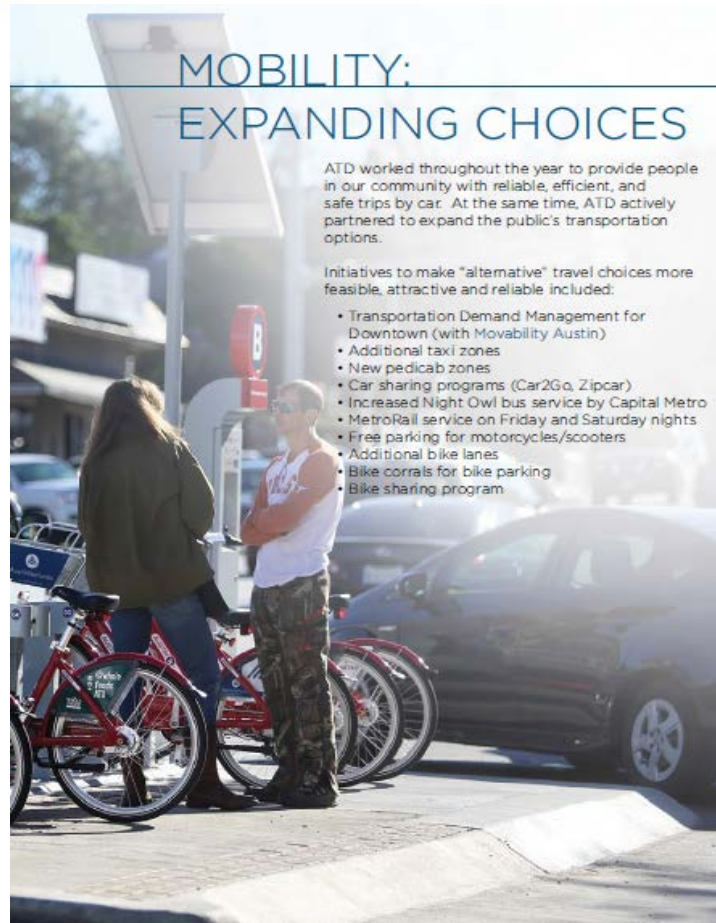
"Develop complete streets design guidelines for all new road construction and reconstruction."
- Imagine Austin LUT A19



Design multi-modal corridor for auto, transit, bike and pedestrians

Corridor Development Program

Guiding Principles



Design multi-modal corridor for auto, transit, bike and pedestrians



Corridor Development Program

- Purpose
 - Identify roadway needs
 - Develop a multi-modal transportation system
 - Support mixed use, pedestrian, transit, and bicycle friendly development patterns
 - Establish a vision, plan, and implementation strategy for improvements
 - Identify short, medium, and long term projects
 - Improve safety
 - Increase vehicular, pedestrian and bicycle mobility
 - Improve quality of life along the corridors

Corridor Development Program

South Lamar Today



Corridor Development Program

Guadalupe Today



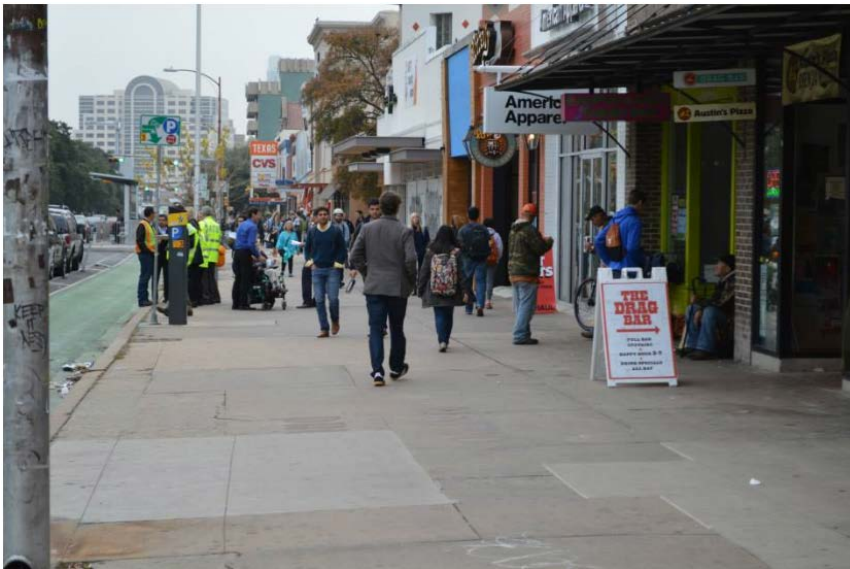
Corridor Development Program

Guadalupe Today



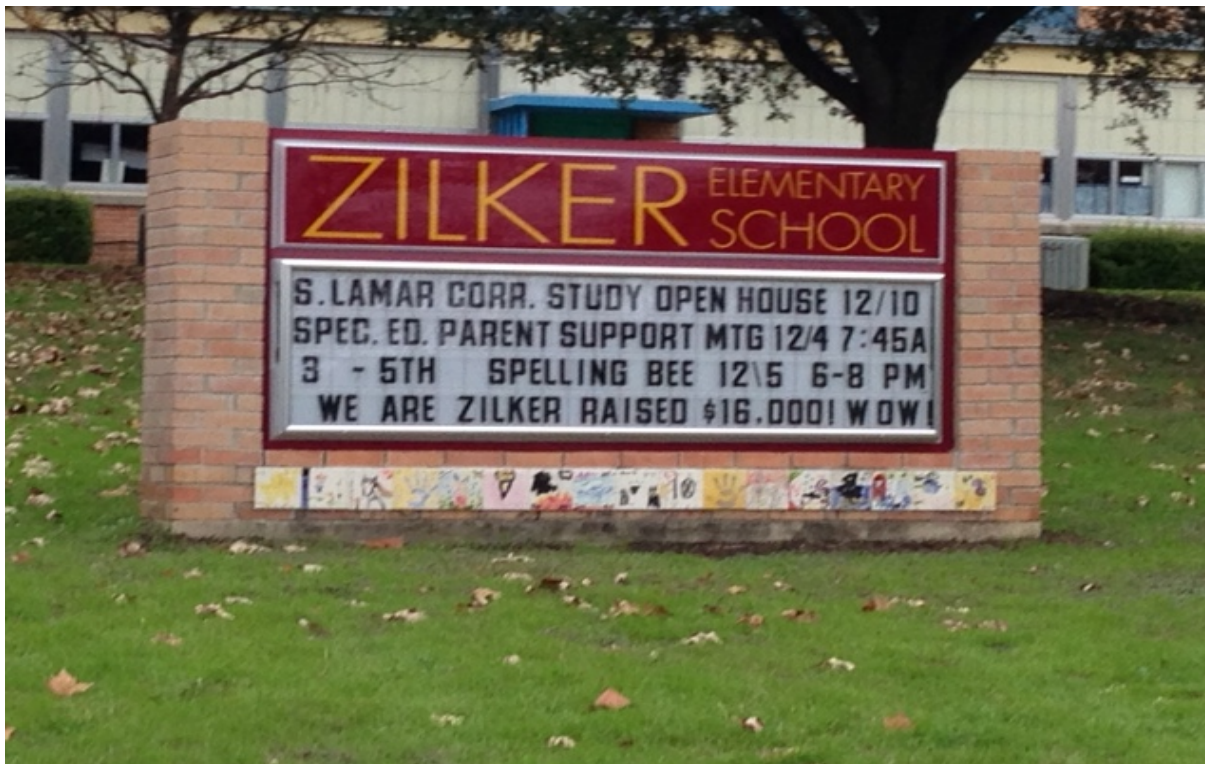
Corridor Development Program

Guadalupe Today



Corridor Development Program

- Process
 - Includes a comprehensive Public Involvement component



Corridor Development Program

- Process
 - Includes a comprehensive Public Involvement component



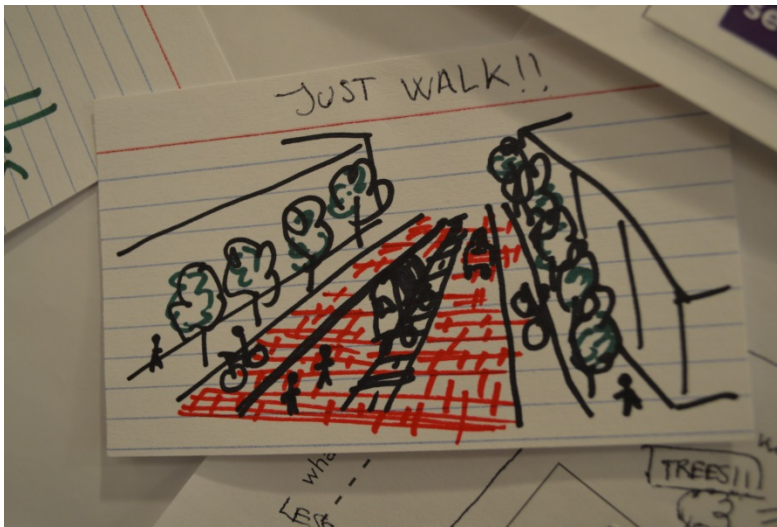
Corridor Development Program

- Process for the corridor includes
 - A comprehensive Public Involvement component



Corridor Development Program

- Process for the corridor includes
 - A comprehensive Public Involvement component



Corridor Development Program

- Process (continued)
 - Analyze the corridor to identify key issues and needs
 - Define or build on the community vision for the corridor
 - Recommend land use and urban design components to improve function and appearance of the built environment
 - Conduct transportation analysis and develop recommendations for creating a safe, multi-modal, transit-supportive corridor
 - Perform a Health Impact Assessment of alternatives to help inform the result
 - Identify improvements for better circulation, connectivity and other requirements for plan implementation

Corridor Development Program

- Outcome
 - Defining and prioritizing short-term solutions (typically those that can be implemented in the existing rights-of-way). These could include changes to intersections, medians, parking, signals, sidewalks and bike lanes, transit service, and the built environment.
 - Designing, costing out and evaluating medium-term solutions, generally involving redesigning and rebuilding the current roadway.
 - Identifying and recommending long-term solutions, including changes to ordinances and policies, land-use planning, and improved ways to manage traffic and mobility.

South Lamar Boulevard Corridor Study

December 3 Open House

130 Attendees

South Lamar Boulevard Corridor Study
Sign In Sheet

Name: _____ Email: _____
Address: _____ City/Zip: _____

Name: _____ Email: _____
Address: _____ City/Zip: _____

Name: _____ Email: _____
Address: _____ City/Zip: _____

Name: _____ Email: _____
Address: _____ City/Zip: _____

Name: _____ Email: _____
Address: _____ City/Zip: _____

Name: _____ Email: _____
Address: _____ City/Zip: _____

45 Comment Cards

S. Lamar Boulevard Corridor Study

We want to hear from you! Do you have a specific comment or concern?

Visit the project website for more information and updates.
www.austintexas.gov/southlamarcorridorstudy

or contact:
Alan C. Hughes, P.E.
Project Manager
Austin Transportation Department
512-974-7186
alan.hughes@austintexas.gov

Thank you for taking time to participate in the South Lamar Boulevard Corridor Study. We look forward to receiving your input!

Name: _____ Email: _____

December 10, 2014

260 Map Comments



651 User Surveys

South Lamar Boulevard Corridor Study

Please take a few minutes to tell us about how you use the South Lamar Boulevard Corridor. Your input is a vital part of this study!

1. How do you use the South Lamar Boulevard Corridor to your daily travel?
☐ Commuting to work/school
☐ Running errands
☐ Visiting family/friends
☐ Shopping
☐ Other

2. What are the main reasons you use the South Lamar Boulevard Corridor?
☐ Convenience
☐ Proximity to destinations
☐ Safety
☐ Other

3. What mode of transportation do you use to travel along the South Lamar Boulevard Corridor?
☐ Car
☐ Bicyclist
☐ Pedestrian
☐ Other

4. What would make you choose to take more trips along the South Lamar Boulevard Corridor?
☐ Improved safety
☐ Improved transit service
☐ Other

5. On a scale of 1 to 5, how important are the following improvements to you?
 1 = Not important at all, 5 = Very important
☐ Improved safety
☐ Improved transit service
☐ Other

6. What problems do you experience when traveling along the South Lamar Boulevard Corridor?
☐ Traffic congestion
☐ Lack of transit service
☐ Other

7. Additional comments:

What do you like about the South Lamar Boulevard Corridor?
 What do you dislike about the South Lamar Boulevard Corridor?
 To receive email updates about this study, please provide your email below:

238 Health Surveys

HexagonCS

Draft of questions for South Lamar community survey
Hexagon Consulting and Services, LLC (HexagonCS)

PG. 1

South Lamar Boulevard Corridor Study
Health Impact Assessment Survey
(This survey will be conducted online)
(Introductory paragraph about the HIA purpose, and reasons for this survey will be included)

Participants will be provided a map of the South Lamar area with numbered census block groups, and lettered destinations to reference for questions 1-5.

- Which area (1-16) do you live in? (include option for "I live outside this area")
- Which area do you work in? (include option for "I work outside this area")
- Which of the destinations (A-??) do you travel to regularly?
- For each destination selected in #3:

South Lamar Boulevard Corridor Study

Comment Cards

Concerns heard at Open House

Autos

- Too many trips cut through neighborhoods
- Cars travel too fast
- Traffic signals need to be re-timed
- Neighborhood parking is a concern
- Parking causes vehicles to back out onto Lamar
- Need protected lefts

Peds

- Pedestrian crossings are too far apart
- Need safer pedestrian crossings
- Provide beacons for crossings
- Sidewalks not continuous
- Improve neighborhood-business connectivity
- Safe routes to schools

Bikes

- Need barrier-separated bike lanes
- Bike lanes are not continuous
- Biking on Lamar isn't safe
- Improve connectivity for bikes from home to businesses
- Better signage for bike routes/trail connection

Transit

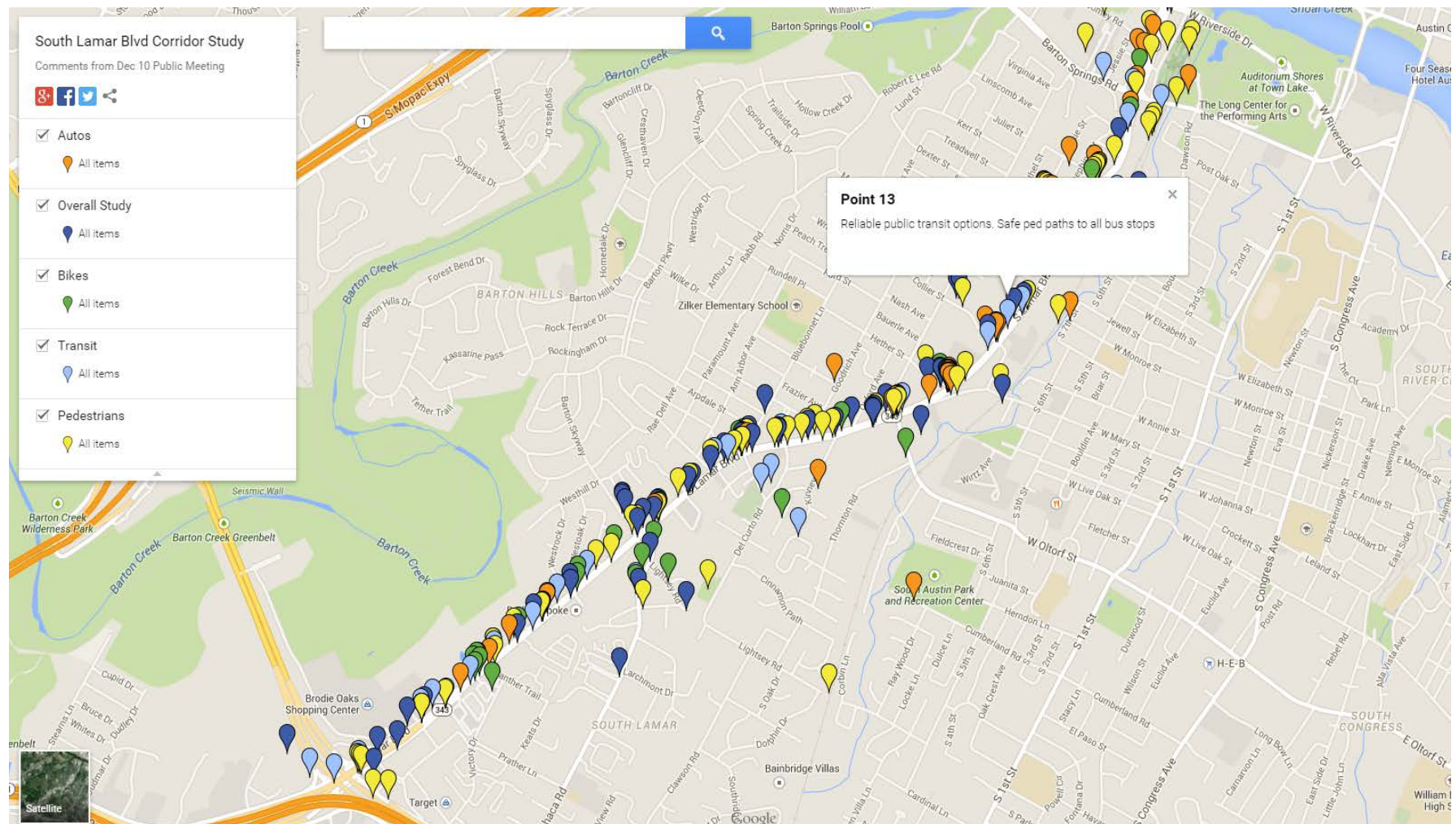
- Need smaller Lamar-dedicated buses that provide 'shuttle' service to and from shopping, retail, food, entertainment, downtown, and neighborhoods
- Dedicated rail or bus lane to keep transit out of traffic queues
- Shade at bus stops

Overall

- Safety concerns for all users
- Development will increase problems
- Improved connectivity to schools, homes, and destinations
- Plant more trees along Lamar, protect heritage trees
- Center-turn lane creates safety hazards

South Lamar Boulevard Corridor Study

Map Comments



Corridor Development Program

<http://austintexas.gov/departments/corridor-studies>



CORRIDOR STUDIES

The Austin Transportation Department (ATD) Traffic Management Division is responsible for ensuring City of Austin roadways are up to today's community standards. ATD uses Corridor Studies to plan for a corridor's changing environment and bring it up to modern expectations. Corridor Studies involve analyzing and improving old roadways to make them accessible to all forms of transportation - personal vehicles, transit, bicycles and pedestrians.

ATD has initiated the following corridor studies:

- Guadalupe Street

Guadalupe Street near the UT Austin campus, with approximate boundaries of MLK Jr. Blvd. to the south, W 29th Street to the north, Rio Grande Street to the west, and a block into the UT Austin campus to the east ("The Drag"). **Click [here](#)** to learn more.

- South Lamar Boulevard

South Lamar Boulevard between Riverside Drive and Ben White Boulevard. **Click [here](#)** to learn more.



Corridor Development Program

South Lamar Boulevard Guadalupe Street

Urban Transportation Commission
February 10, 2015



AUSTIN MOBILITY

Making mobility better, together.

2.10.15 Urban Transportation Commission

