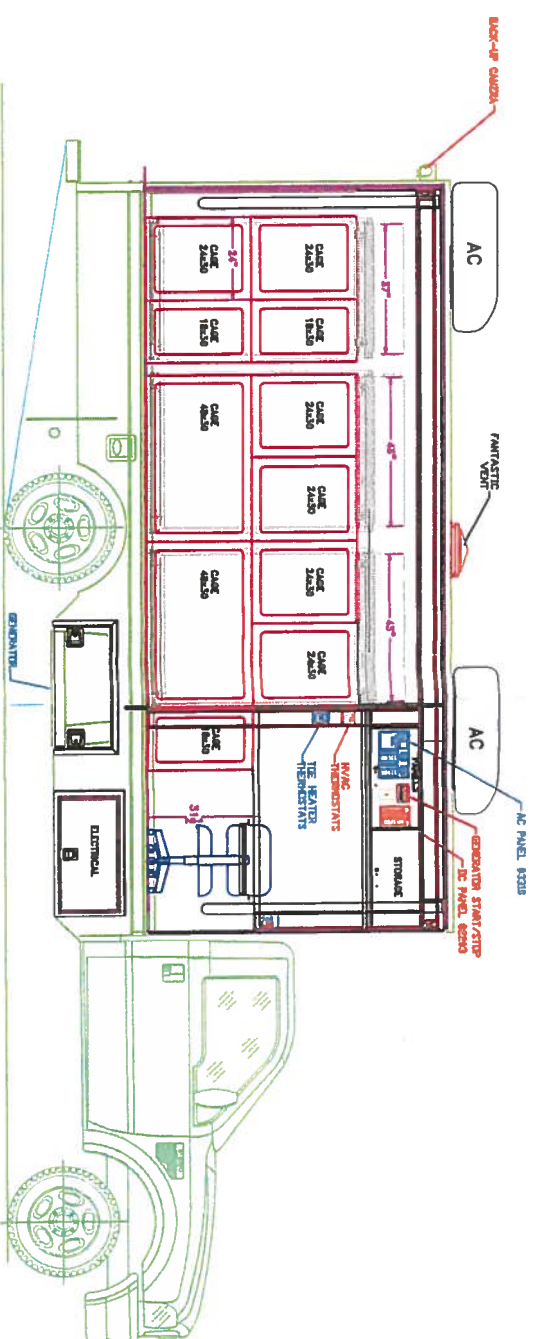


DRIVER'S SIDE

-REAR VIEW-

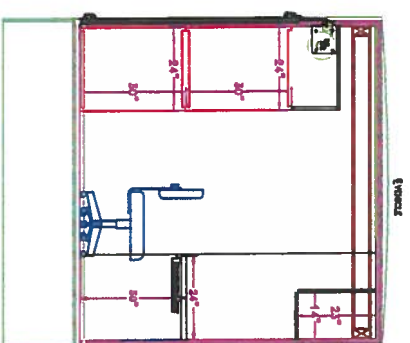
CURB SIDE



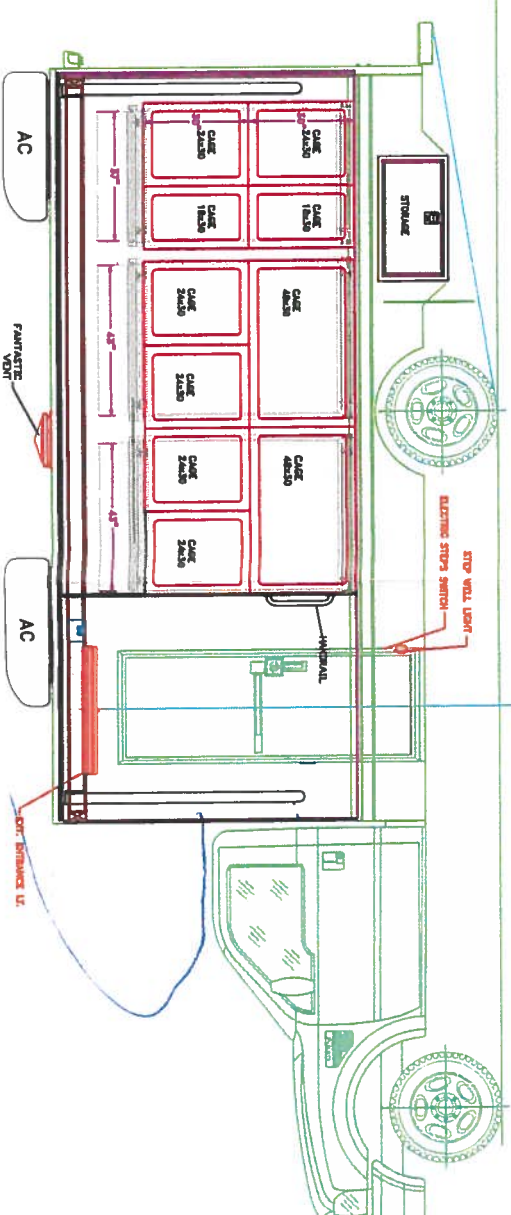
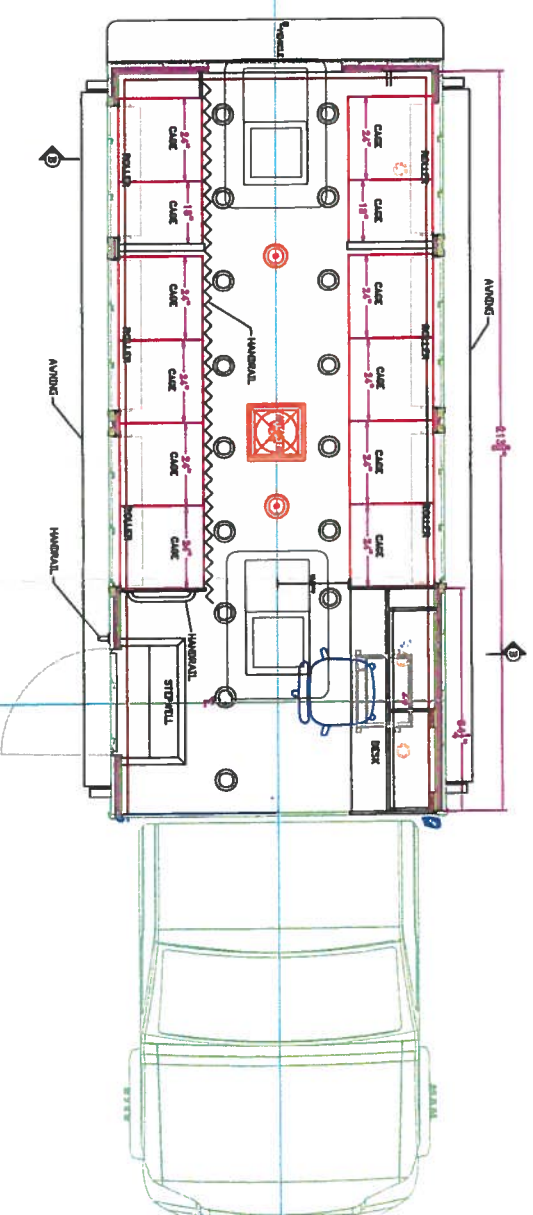
CURB SIDE

-FRONT VIEW-

DRIVER'S SIDE



CURB SIDE DRIVER'S SIDE



CUSTOMER APPROVAL		REVISION HISTORY	
PRINT NAME		REV	DESCRIPTION
		1	1-12-14
		2	Changed tire sizes and quantities
		3	1-20-14
		4	Added tire changes to bottom row
		5	1-21-14
DATE			
USA			
FARBER SPECIALTY VEHICLES 7032 AMERICANA PARKWAY COLUMBUS, OH 43008 USA			
	BODY	18 3/4"	
	CHASSIS	F-350	
		UNLESS OTHERWISE SPECIFIED	
		DIMENSIONS ARE IN INCHES	
		FOOTING IS 1/5"	
		ANCHOR BEND 45°	
		406	
		THREE PLACE TIE DOWN	
		3006	
	DESIGN ENGINEER	BAAG	
	ELEC. ENGINEER	XX	
	ENG. WORK APPROVAL		
	SALES RA		
PROPRIETARY AND CONFIDENTIAL INFORMATION IS THE PROPERTY OF FARBER SPECIALTY VEHICLE. ANY REPRODUCTION OR DISSEMINATION WITHOUT THE WRITTEN PERMISSION OF FARBER SPECIALTY VEHICLE IS PROHIBITED			
CUSTOMER		CITY OF AUSTIN, ANIMAL SERVICES	
TITLE		SALES DMC	
SHEET SIZE		SCALE	
D		1:24	
UNIT NO		16233	
REV		S4	
SHEET 1 OF 1			