



A Demographic Snapshot of Austin

City Council Orientation

March 6, 2015

Ryan Robinson

City Demographer

Planning & Development Review Department

Demographic Themes--Takeaways

- 1. Long-term, sustained, rapid job and population growth.**
- 2. Profound diversification.**
- 3. Stubborn socioeconomic separations.**
- 4. Austin's new districts bring increased representation...and are very different from each other.**

A Demographic Snapshot of Austin

City Council Orientation, March 6, 2015

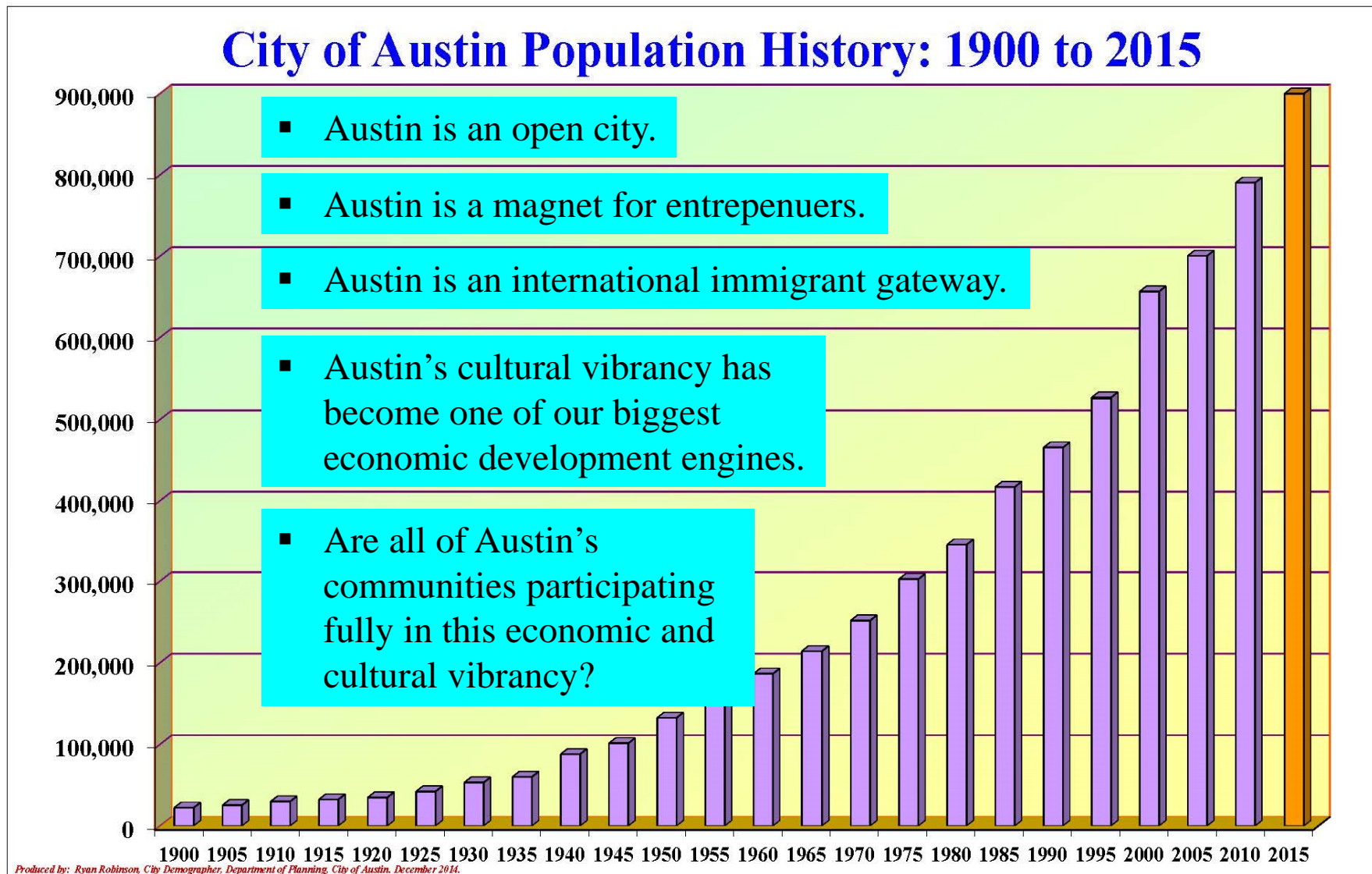
Ryan Robinson

City Demographer

Planning & Development Review Department

A Demographic Snapshot of Austin

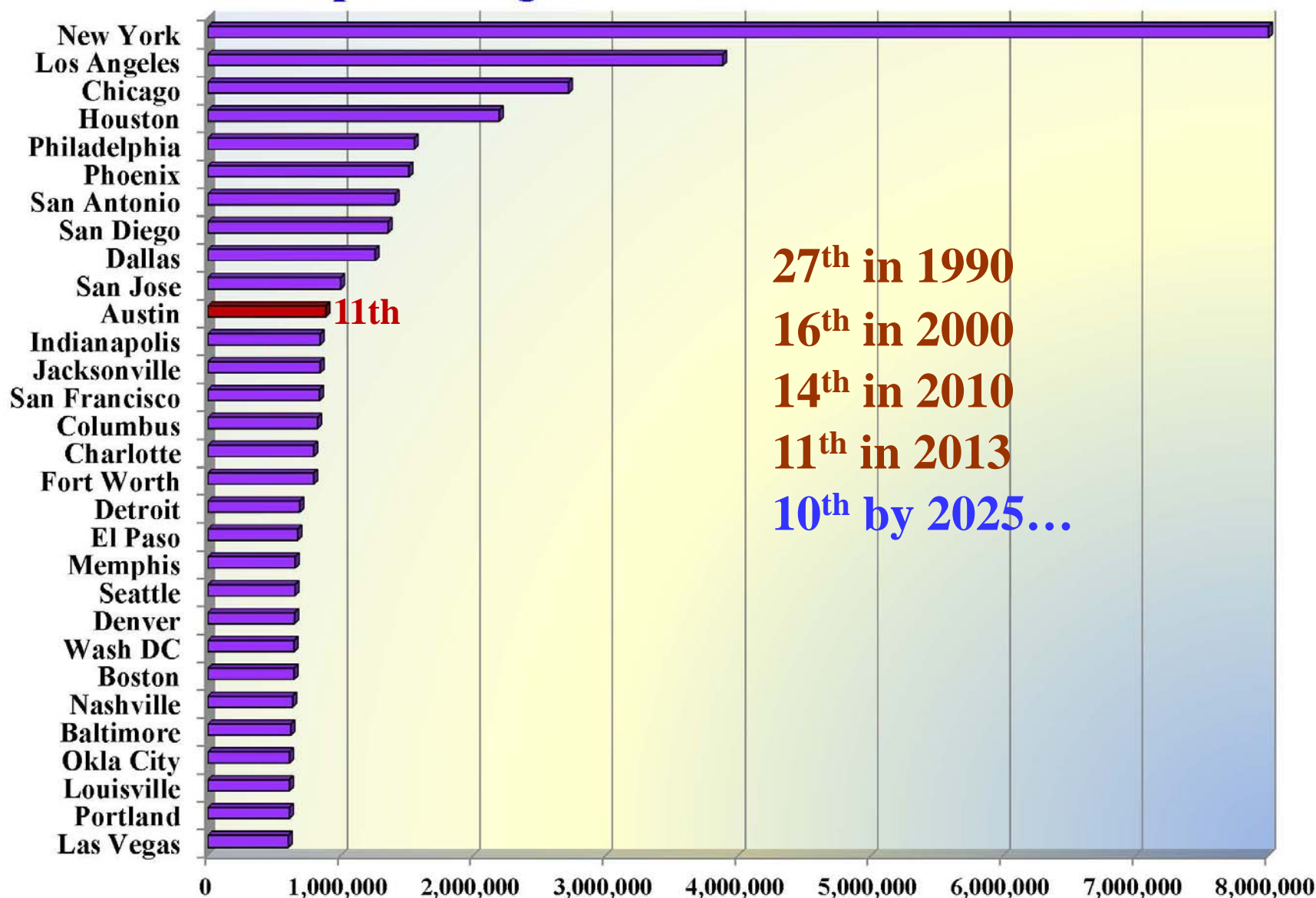
1. Long-term, sustained, rapid job and population growth.



Top 30 Fastest Growing Large (500K+) US Cities: 2010 to 2013



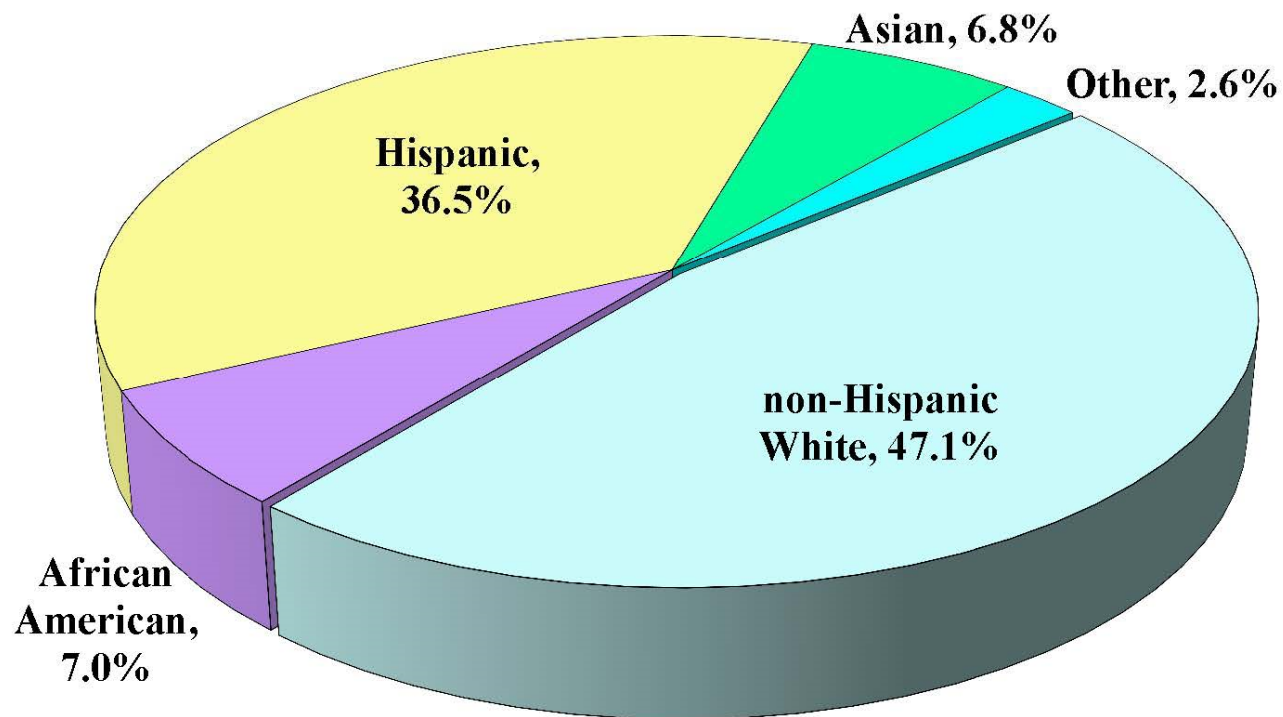
Top 30 Largest Cities in the US: 2013



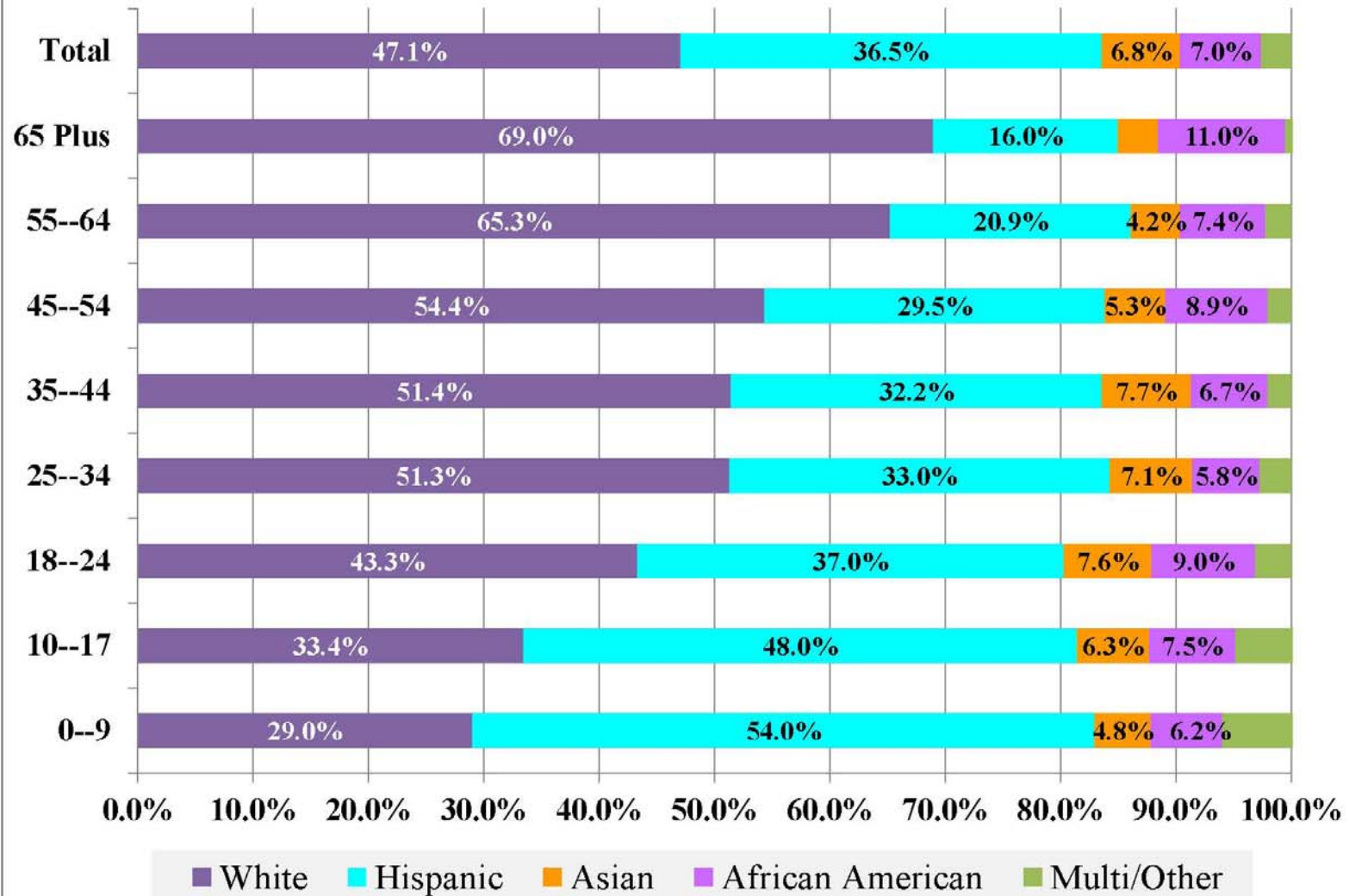
A Demographic Snapshot of Austin

1. Long-term, rapid, sustained population growth.
2. **Profound diversification.**

**Racial and Ethnic Mix, City of Austin,
2014 Estimates**

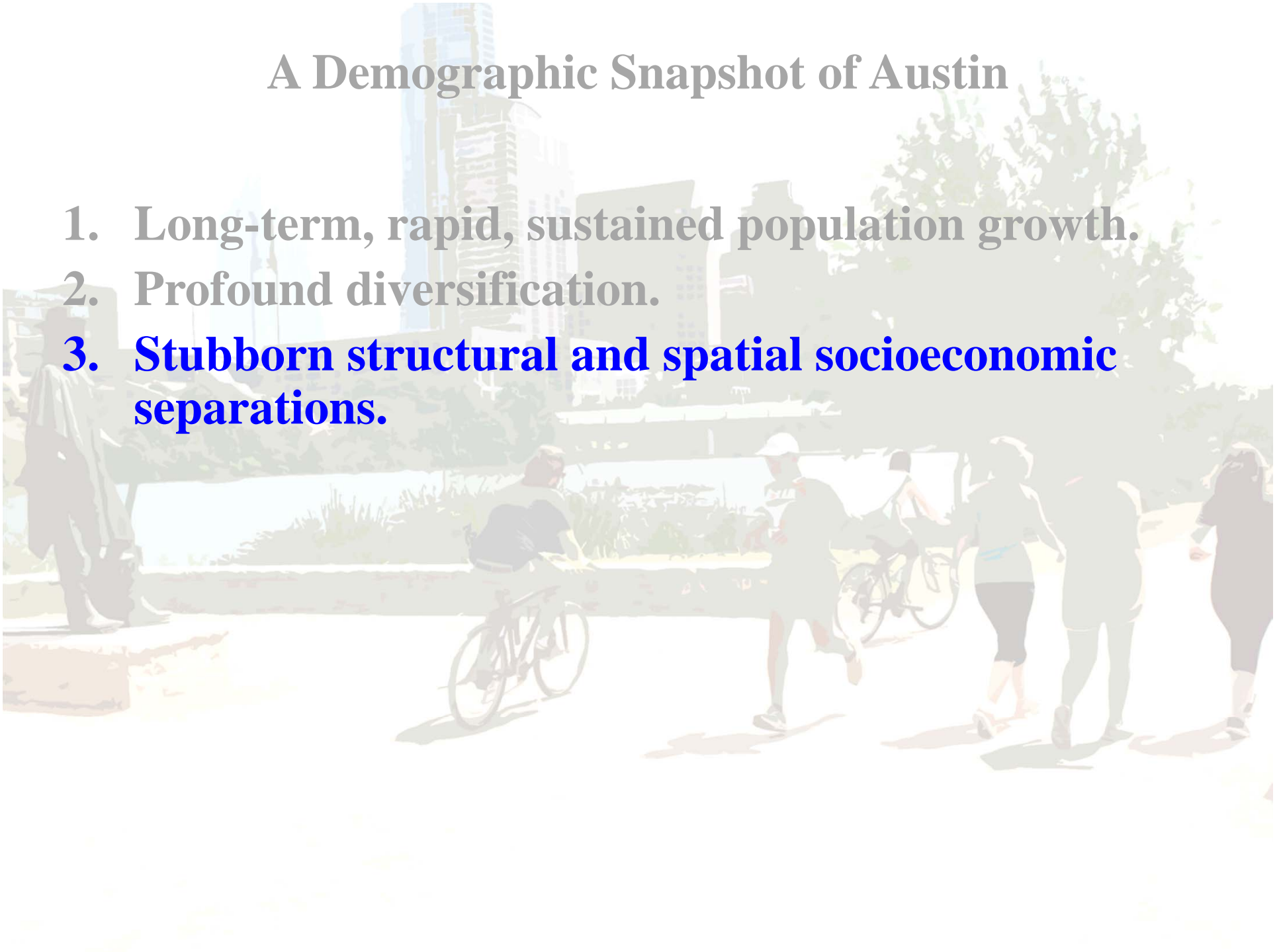


Age Structure by Race and Ethnicity, Austin, 2014



A Demographic Snapshot of Austin

1. Long-term, rapid, sustained population growth.
2. Profound diversification.
3. **Stubborn structural and spatial socioeconomic separations.**



Poverty Rates by Age Group, Race and Ethnicity

City of Austin

American Community Survey, 2013, 1-year Estimates Series, Table B17001

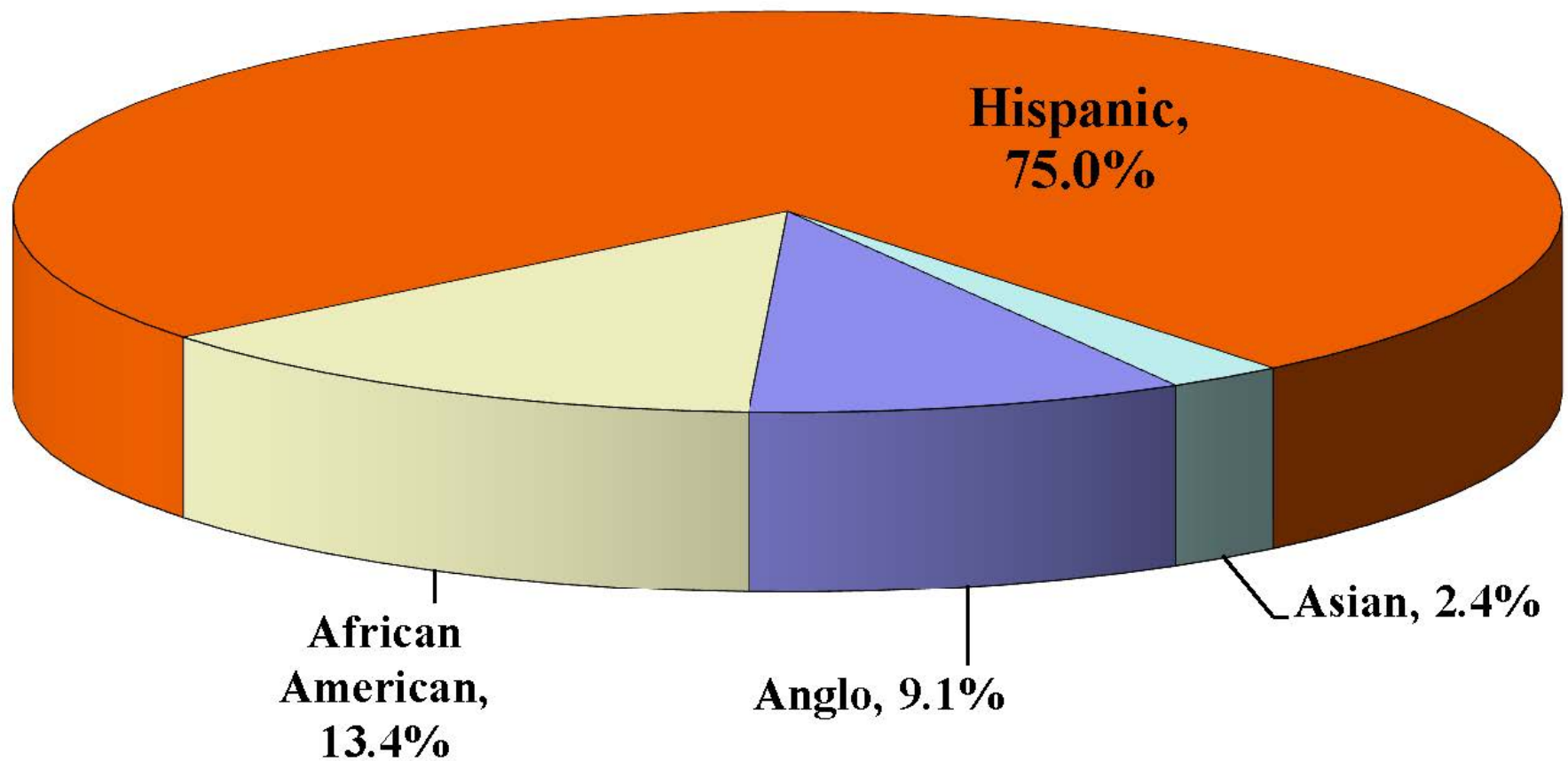
Table I: Poverty Rates (1)

Category or Group	Overall Population	non-Hispanic White	African American	Hispanic	Asian
Overall Population	17.8%	10.6%	24.2%	27.5%	15.3%
Under Age 5	22.6%	5.4%	51.8%	33.0%	9.6%
Under Age 18	23.6%	6.8%	34.6%	36.5%	10.3%
Age 65 Plus	8.4%	4.0%	13.0%	19.9%	19.6%

NOTES:

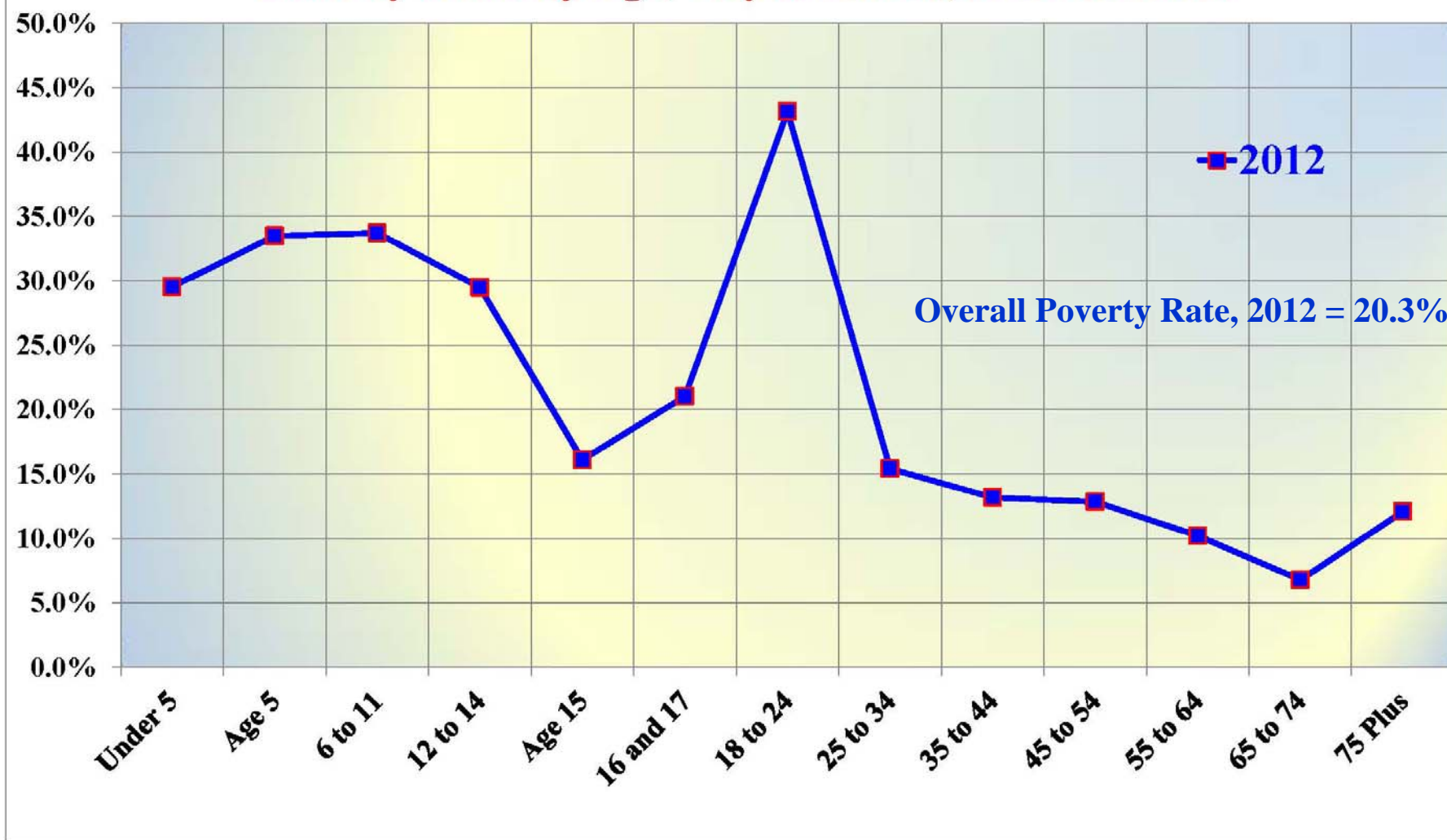
(1) The source for data behind this table on Poverty in metropolitan Austin is the American Community Survey, which is produced by the US Census Bureau. Data for this table are from the 2013 1-year Estimates Series. Poverty rates are calculated for only the portion of the total population that lives within a household, poverty rates are not calculated for institutionalized persons or individuals living within Group Quarters situations. The Poverty Rate is a function of total annual household income and the number of individuals within a household. The 2013 Poverty threshold for a family of four was \$23,835

City of Austin, Under 5 and in Poverty, by Race and Ethnicity, 2013

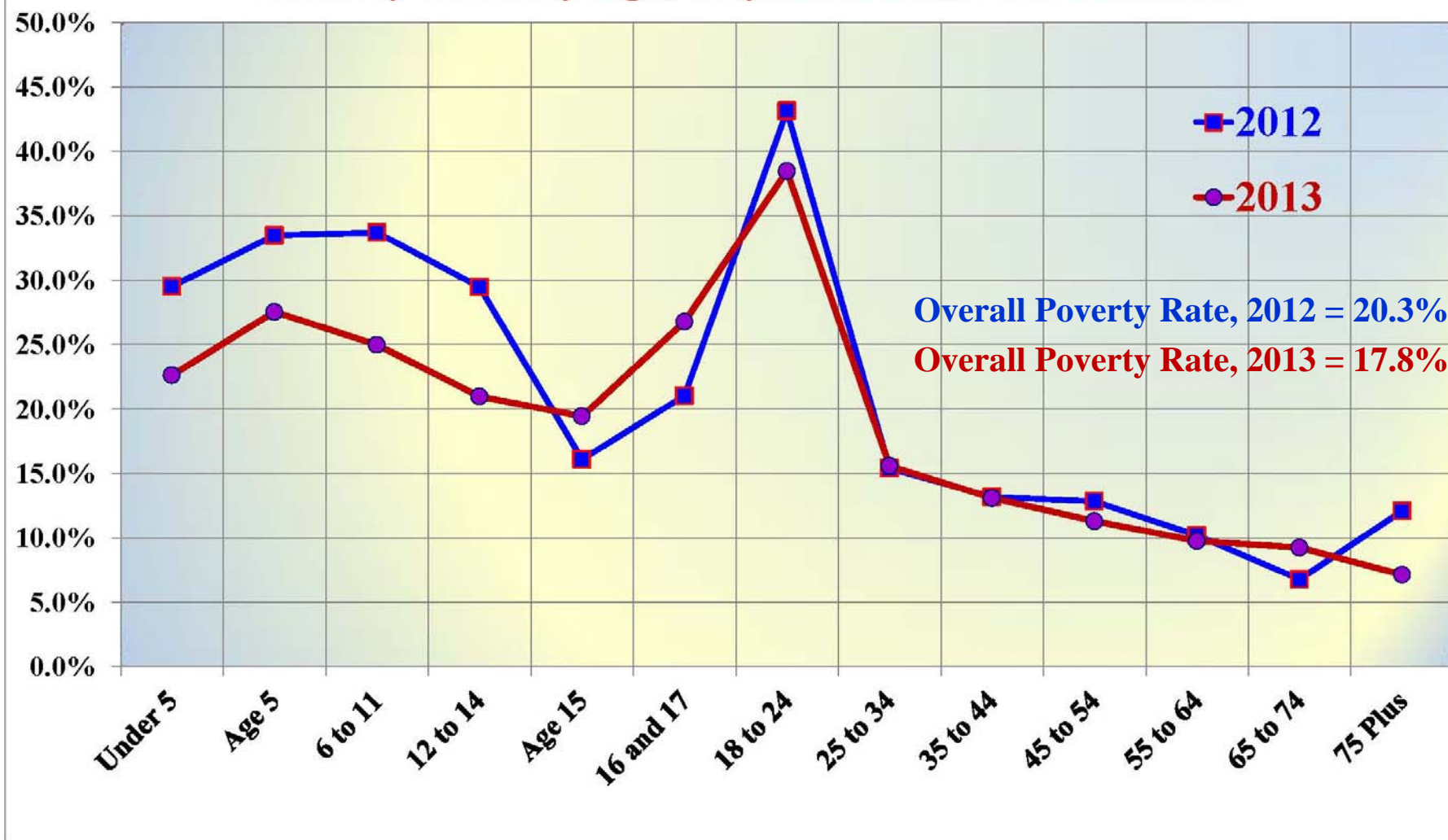


Source: American Community Survey, 2013 1-year estimates, Table B17001.

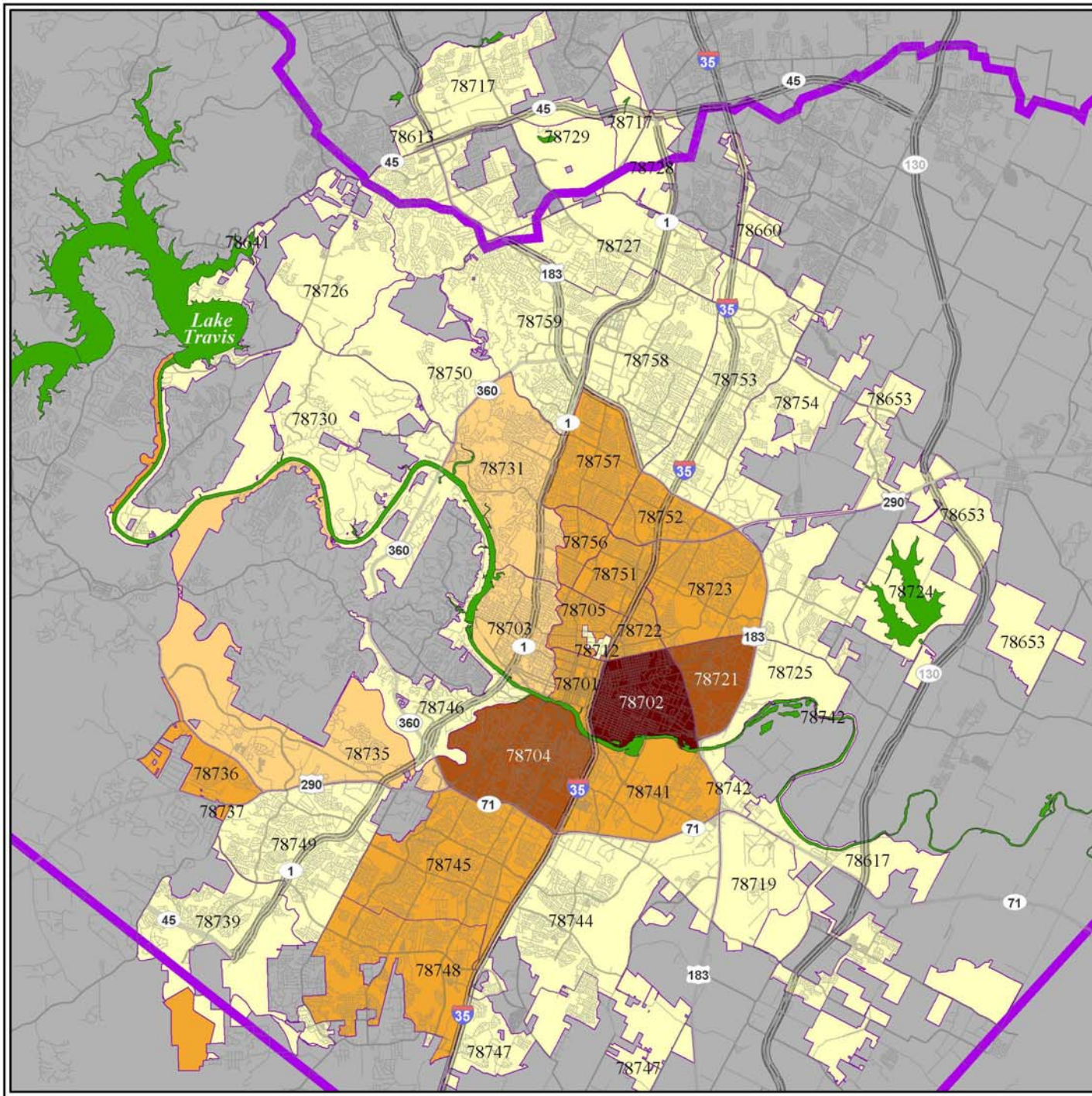
Poverty Rates by Age, City of Austin, 2012 and 2013



Poverty Rates by Age, City of Austin, 2012 and 2013



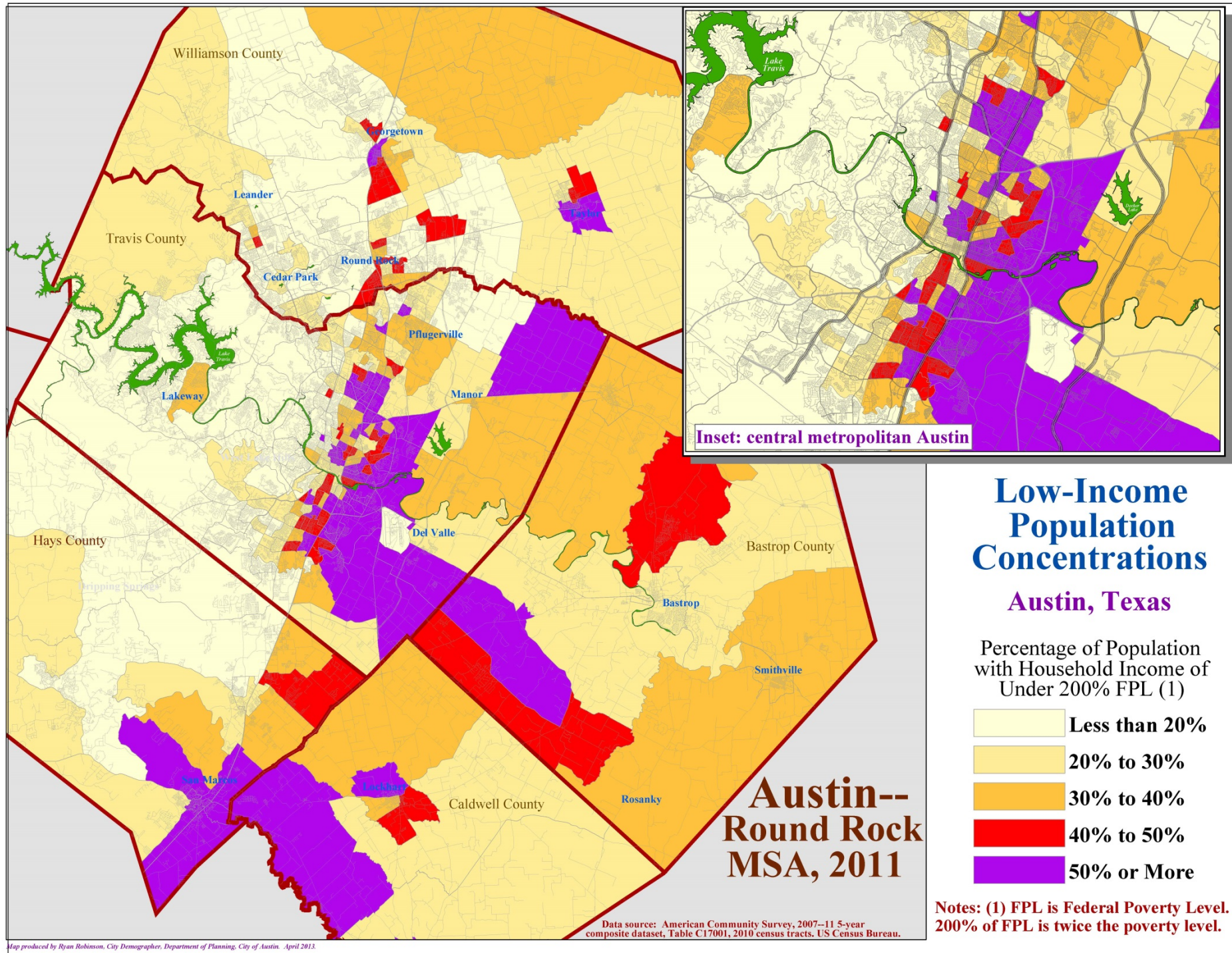
Median SF Value Change by ZIP Code: 2007 to 2014

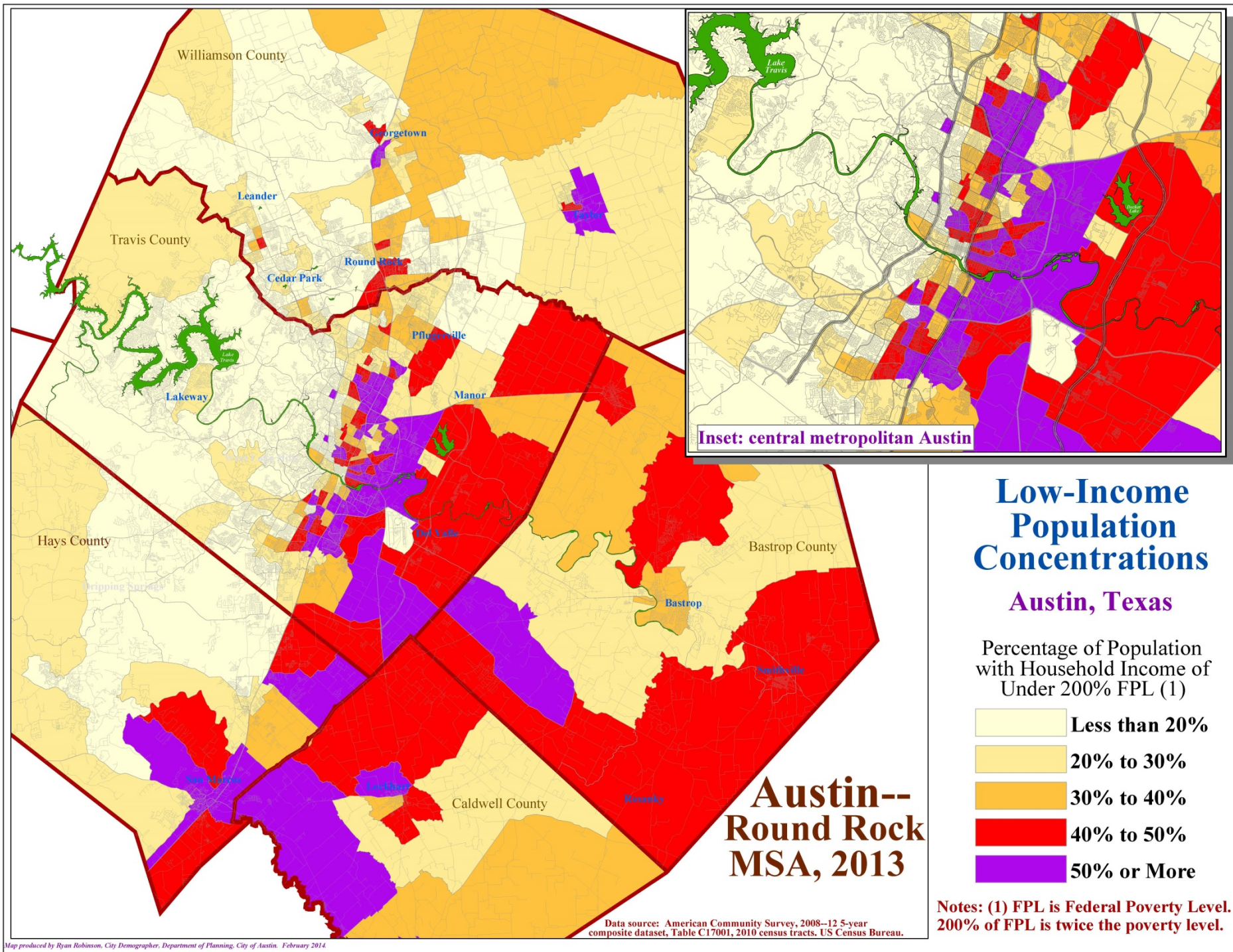


Percent Change

- Less than 50%
- 50% to 100%
- 100% to 150%
- 150% to 200%
- 200% Plus

Data source: TCAD and WCAD data--smoothed with American Community Survey data, 2008-2012 5-year composite dataset.
Map produced by Ryan Robinson, City Demographer, Department of Planning, City of Austin, November 2014.





A Demographic Snapshot of Austin

1. Long-term, sustained, rapid job and population growth.
2. Profound diversification.
3. Stubborn structural and spatial socioeconomic separations.
4. **Austin's new districts bring increased representation...and are very different from each other.**

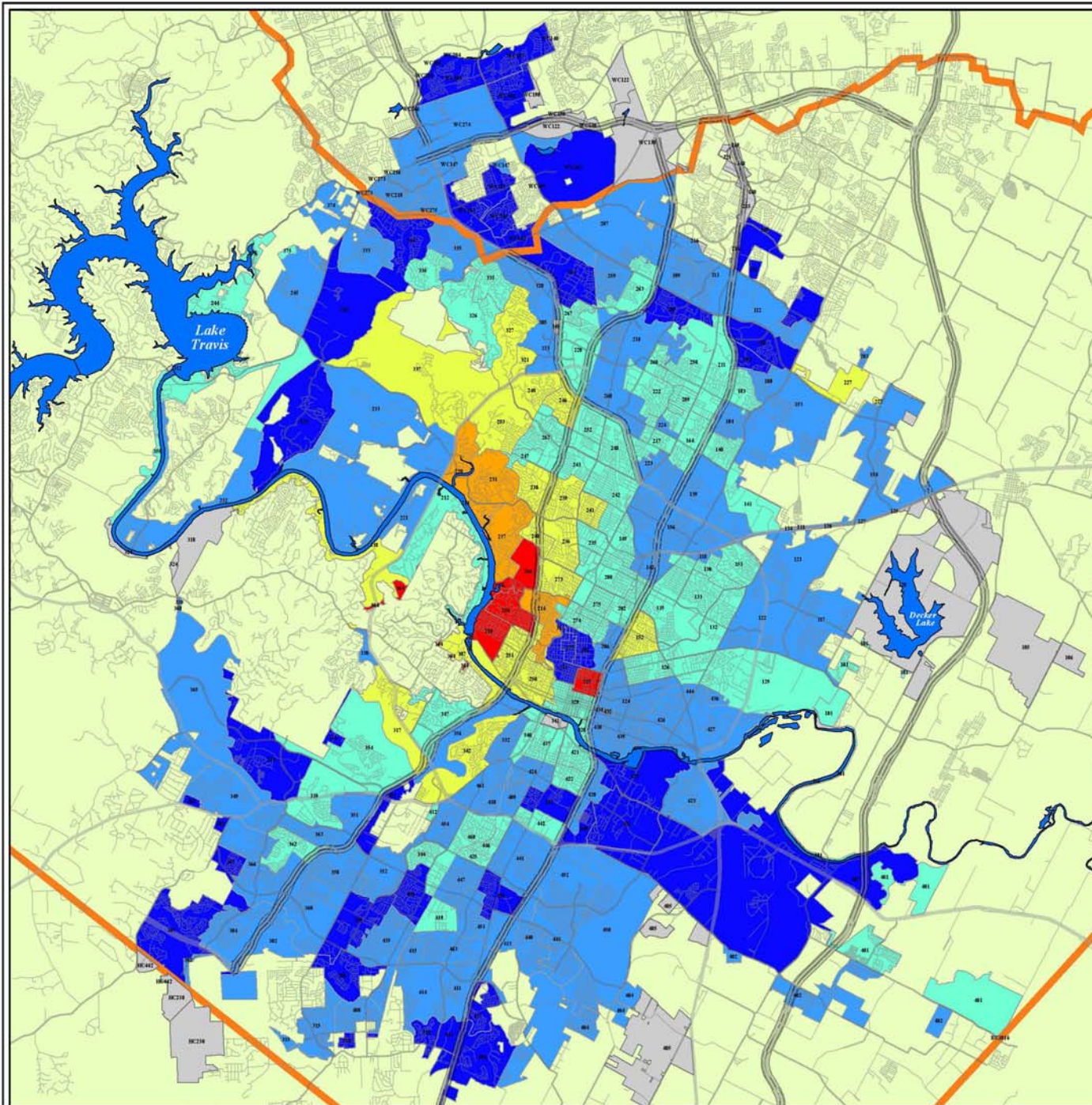
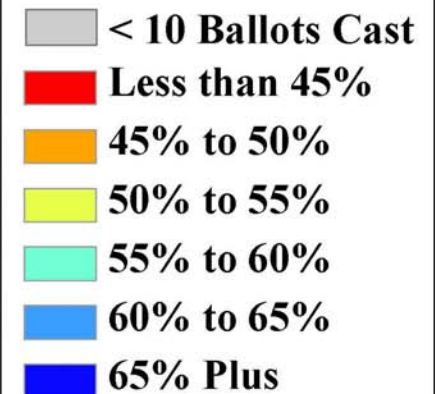
Proposition 3 Results: The 10-1 Plan

November 6, 2012

Percent of Voters Who Voted
For Proposition 3, by Precinct,
City of Austin.

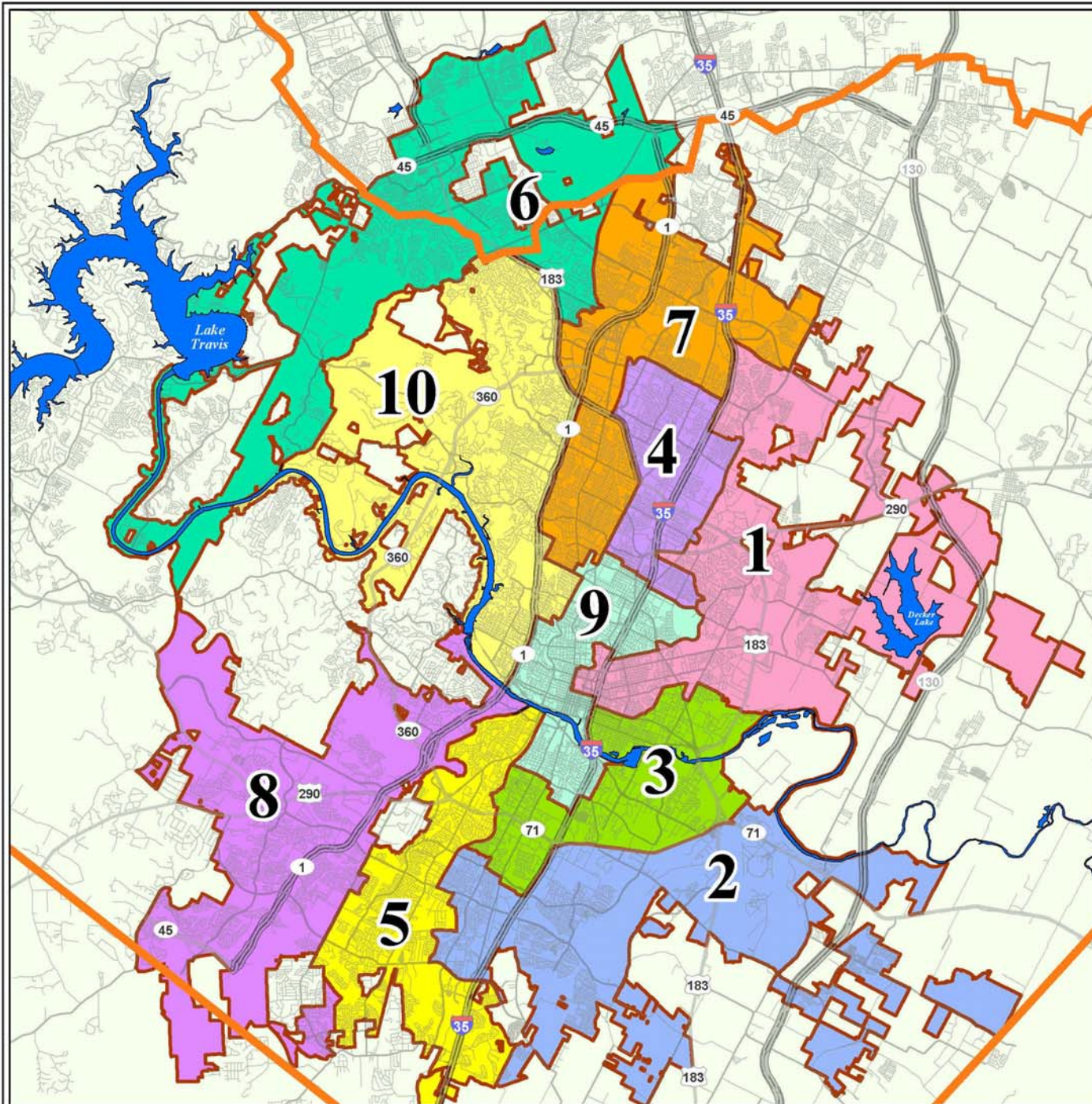
**Overall Percentage
in favor of
Proposition 3 = 60.1%**

Percent For



**ICRC Final Plan
November 2013**

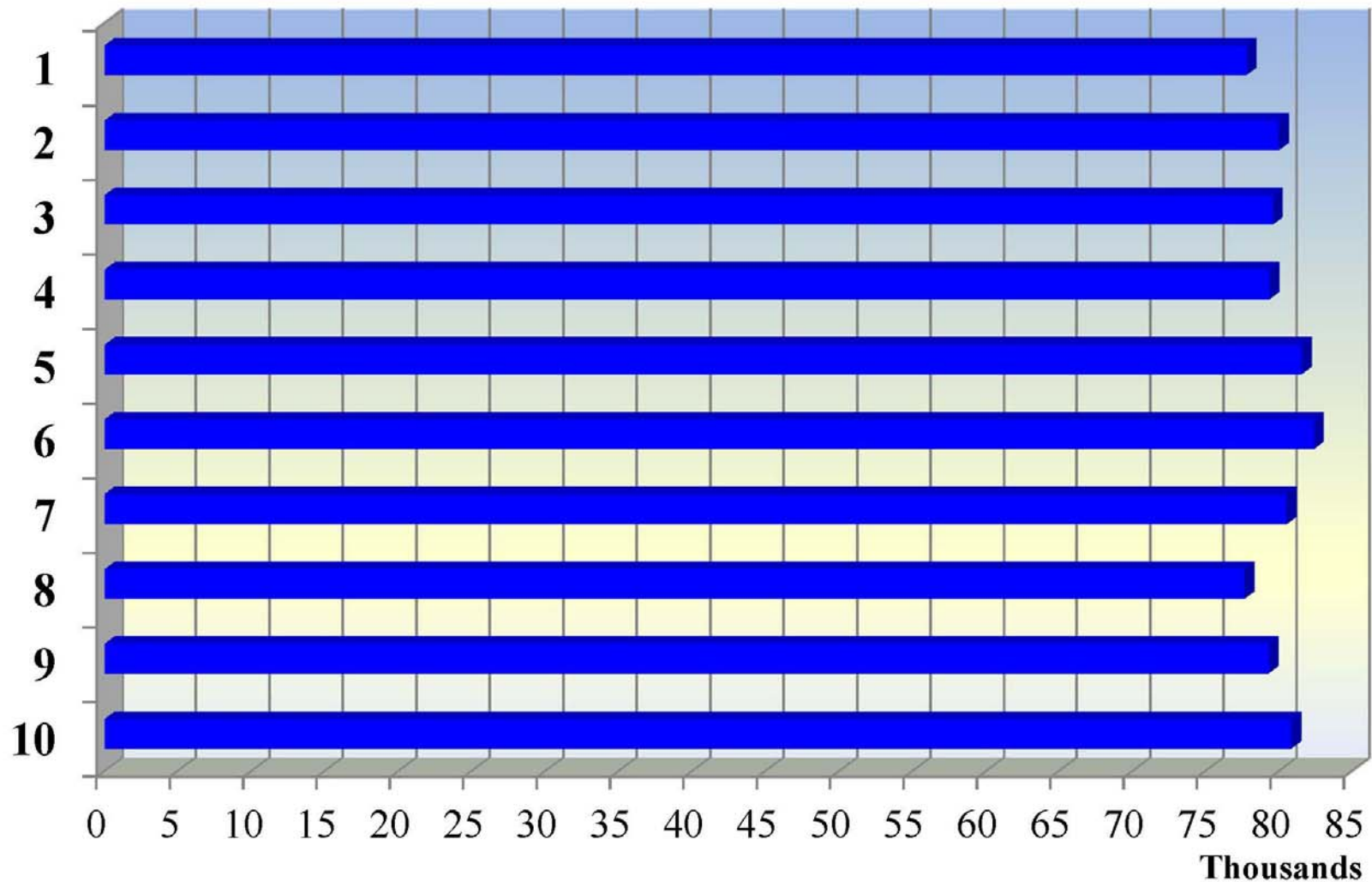
**City of Austin
City Council
Districts**



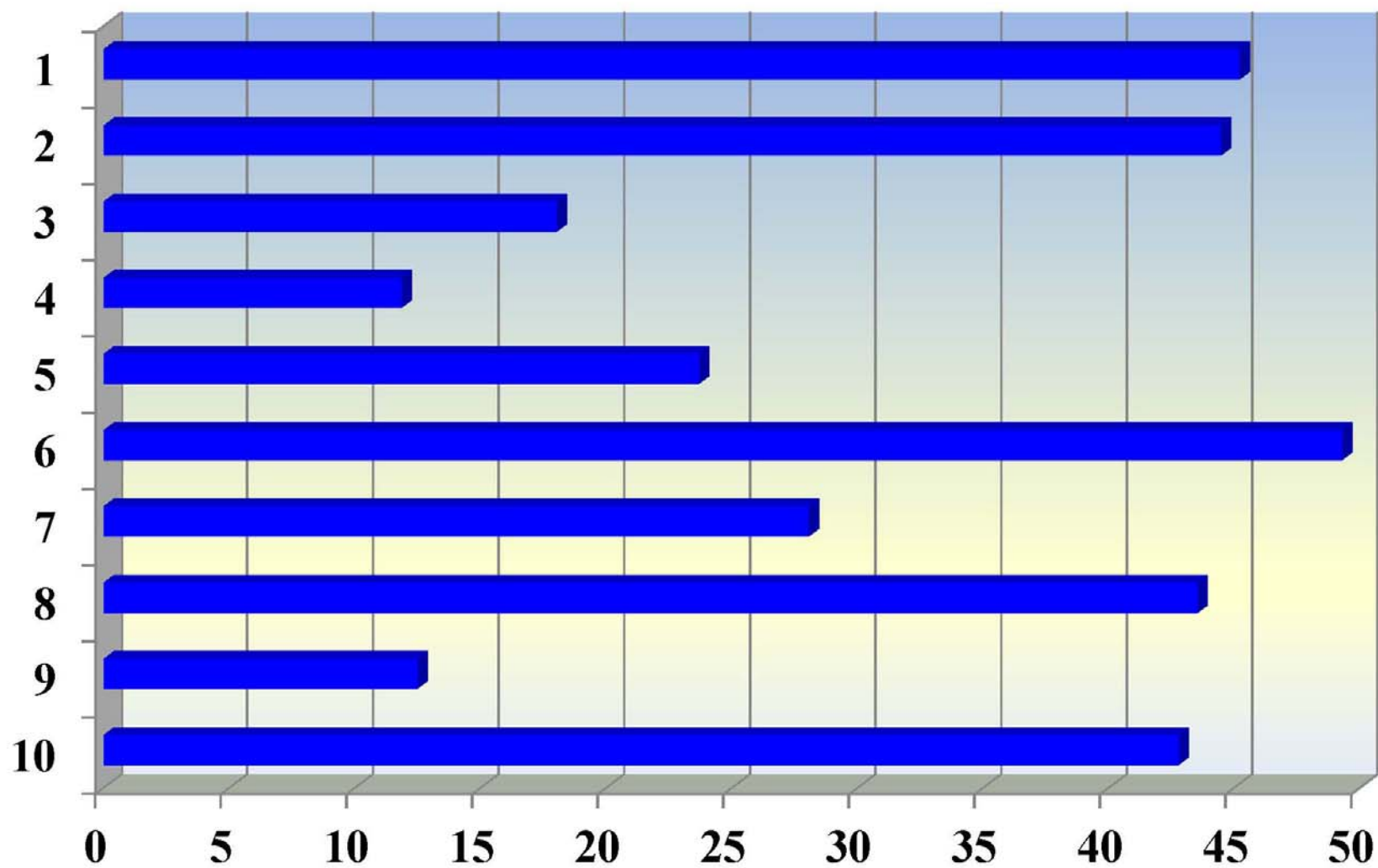
Austin, Texas



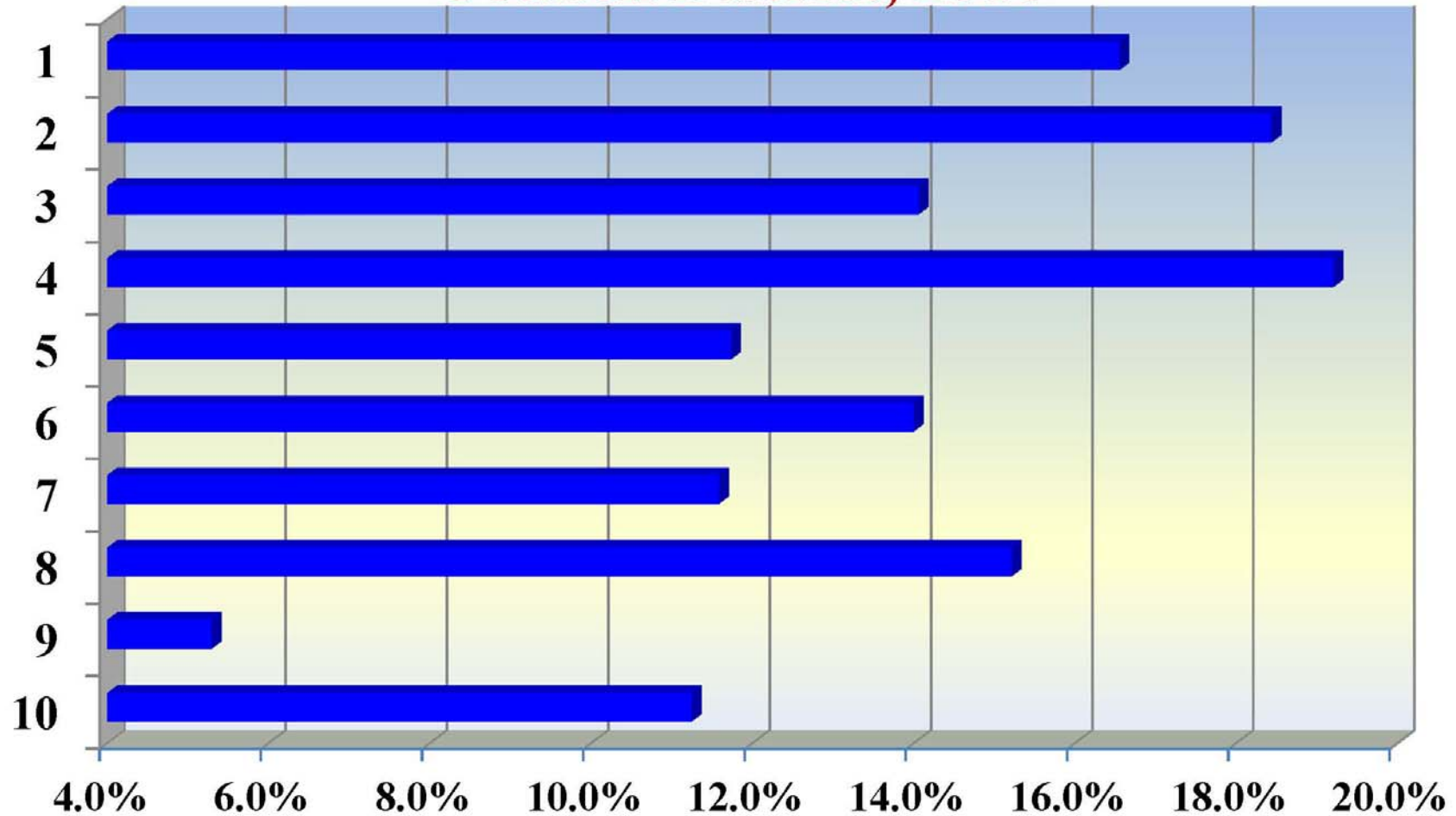
Total Population by Council District, 2010



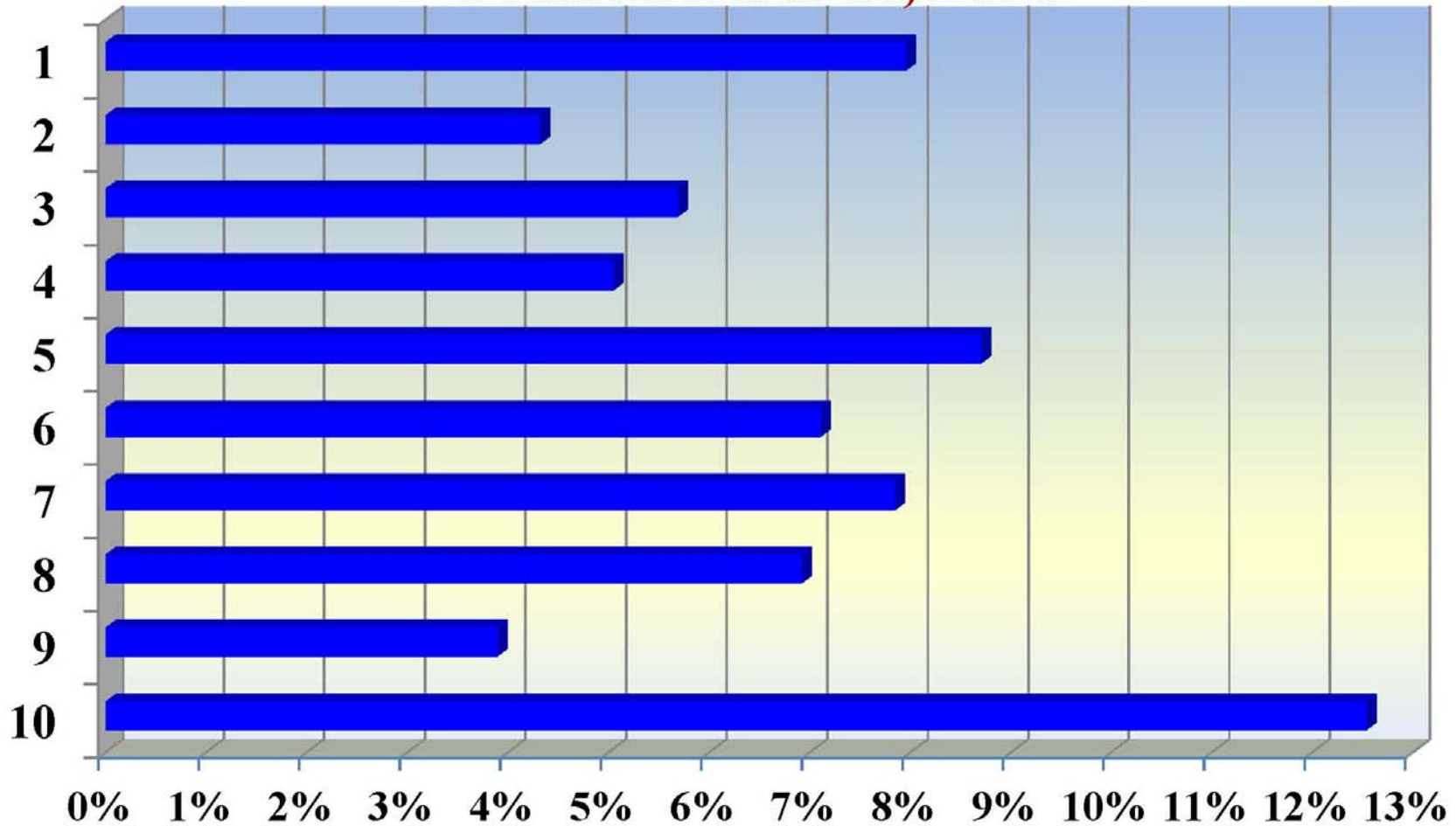
Square Miles by Council District



Age 0 to 9 as Share of Total Population by Council District, 2010



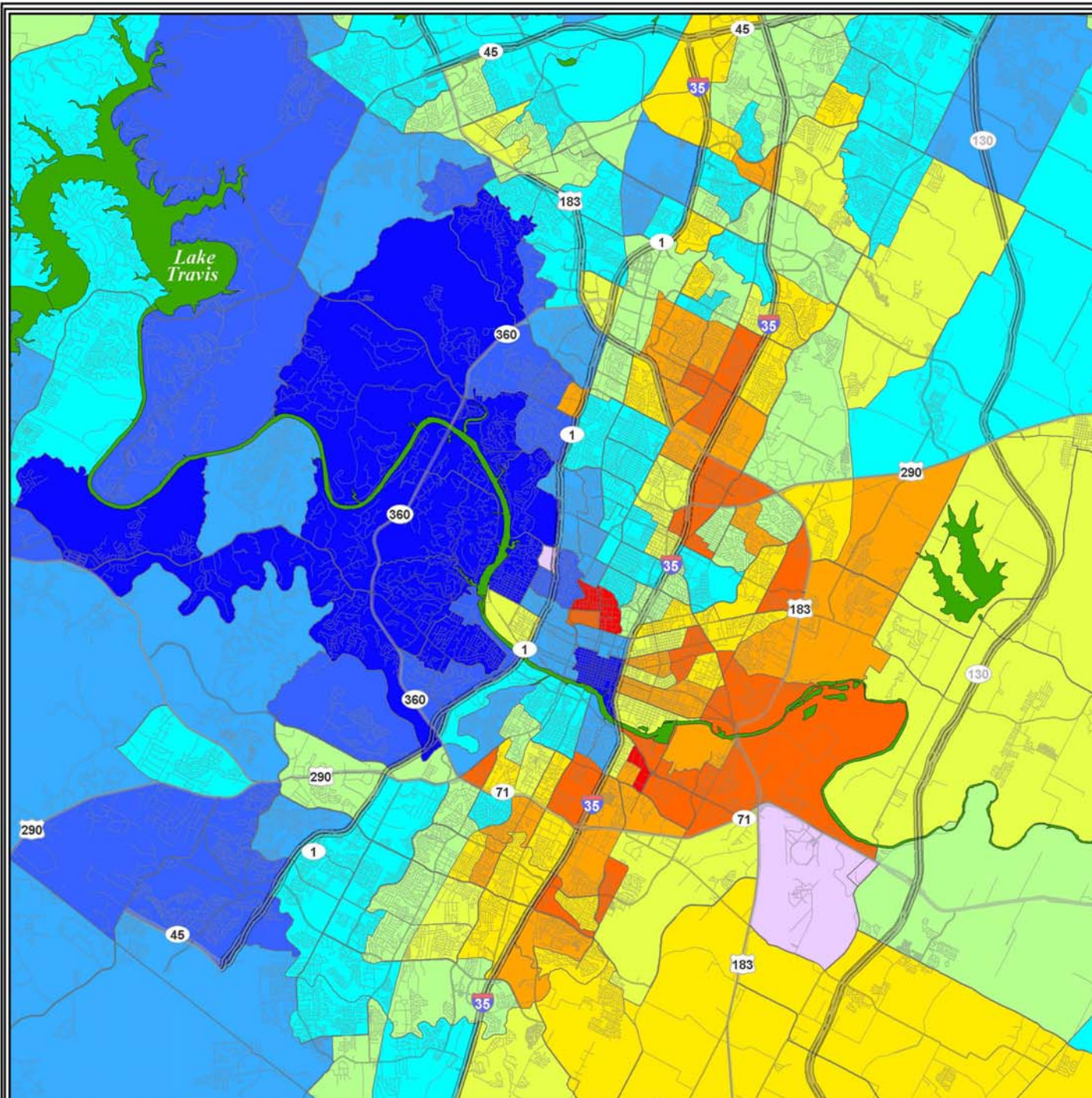
Seniors (65+) Share of Total Population by Council District, 2010



Median Family Income

Austin, 2013

Income Bracket

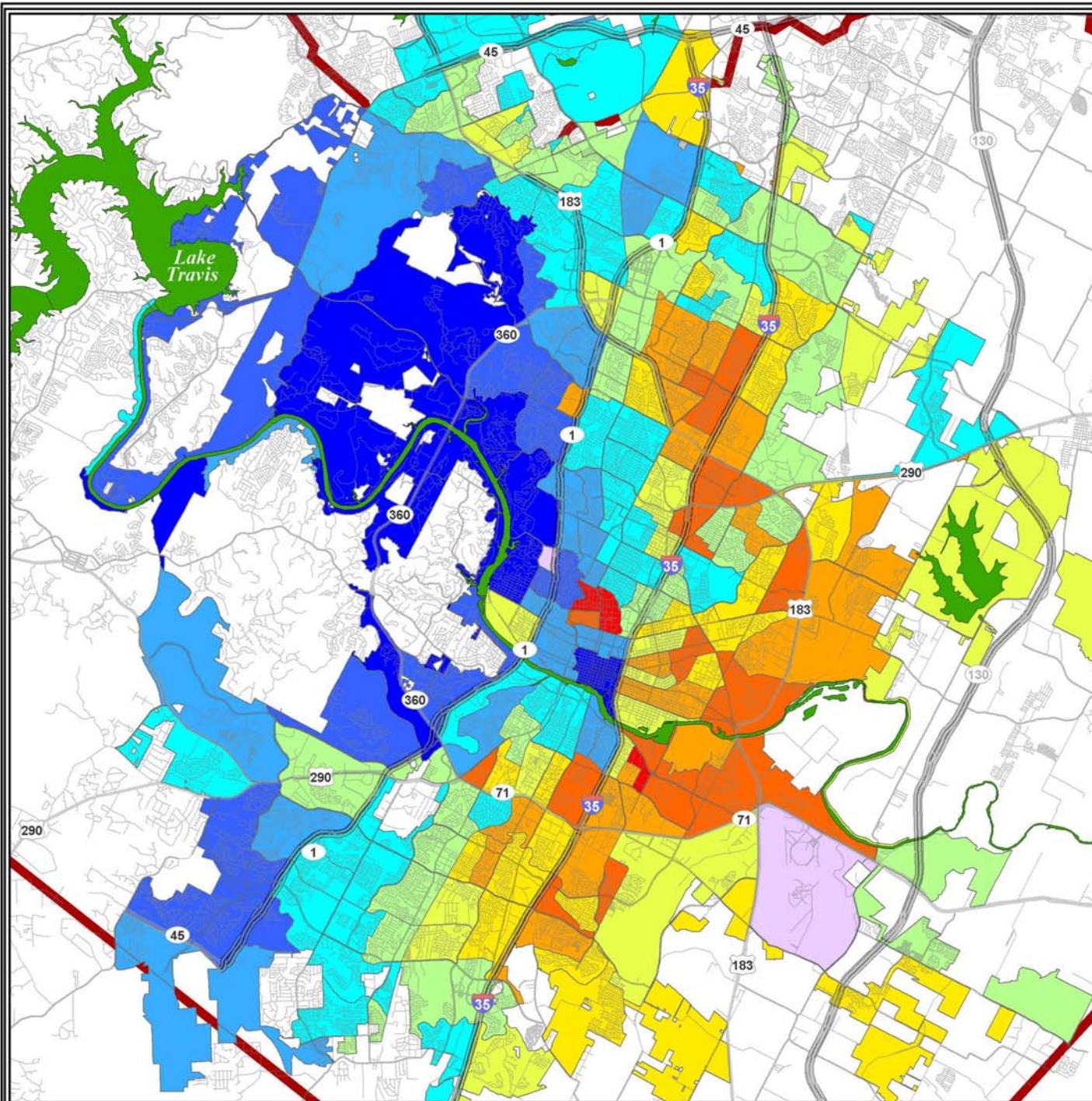


Data source: American Community Survey, 2009-13 5-year composite dataset, Table B19113, census tracts. US Census Bureau.
Map produced by Ryan Robinson, City Demographer, Department of Planning, City of Austin, March 2015.

Median Family Income

Austin, 2013

Income Bracket

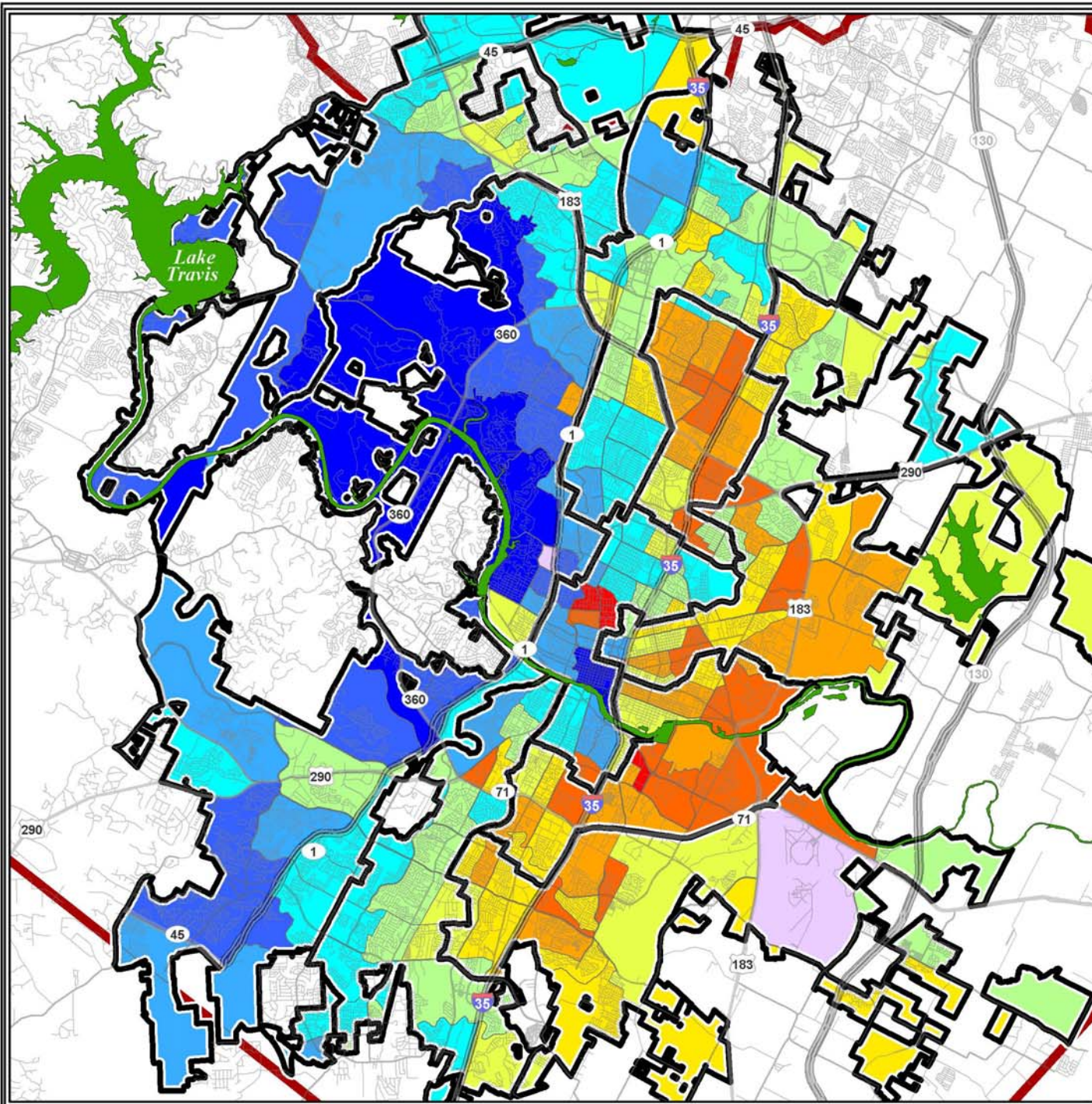


Data source: American Community Survey, 2009-13 5-year composite dataset, Table B19113, census tracts, US Census Bureau.
Map produced by Ryan Robinson, City Demographer, Department of Planning, City of Austin, March 2015.

Median Family Income

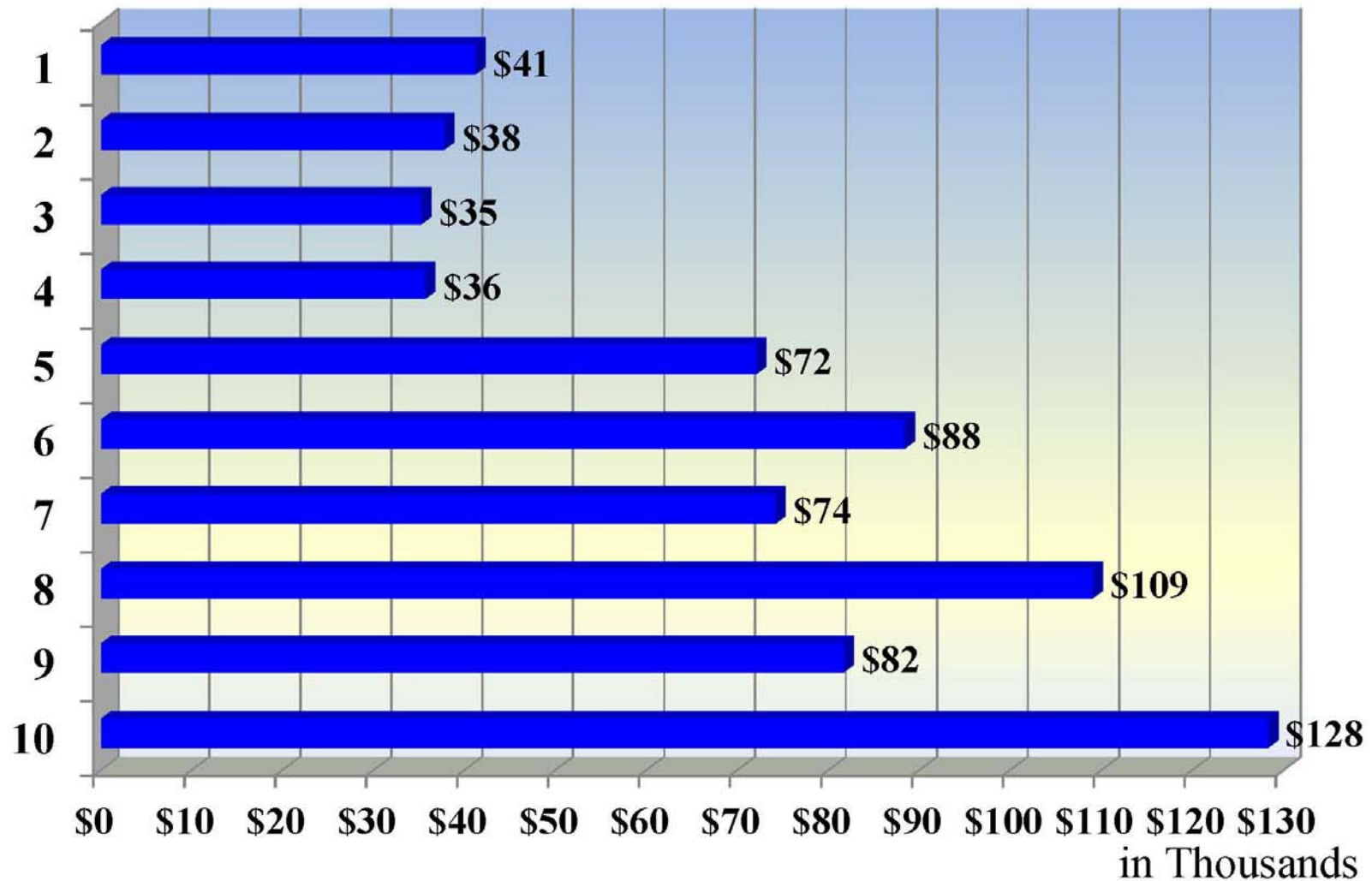
Austin, 2013

Income Bracket

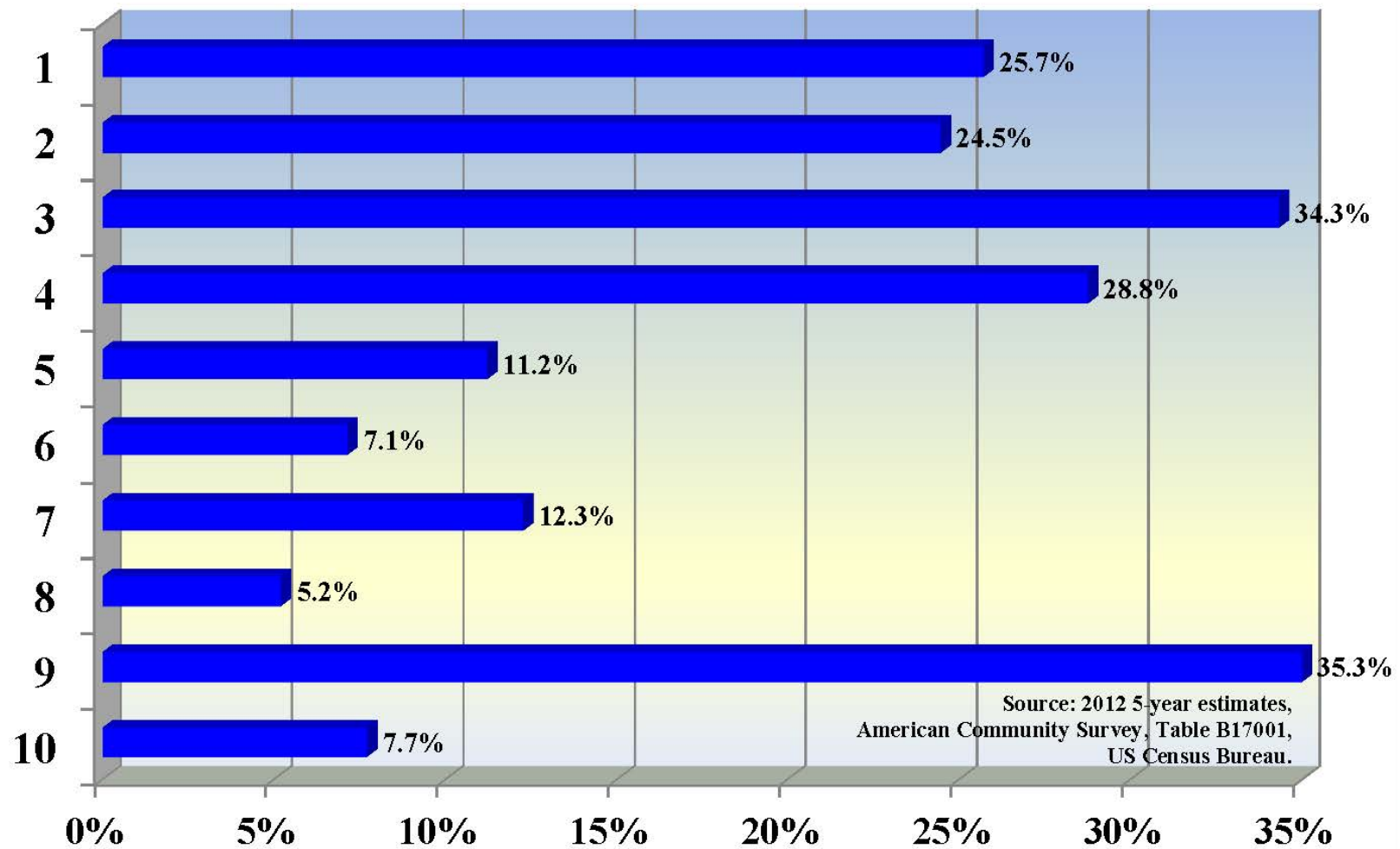


Data source: American Community Survey, 2009-13 5-year composite dataset, Table B19113, census tracts, US Census Bureau.
Map produced by Ryan Robinson, City Demographer, Department of Planning, City of Austin, March 2015.

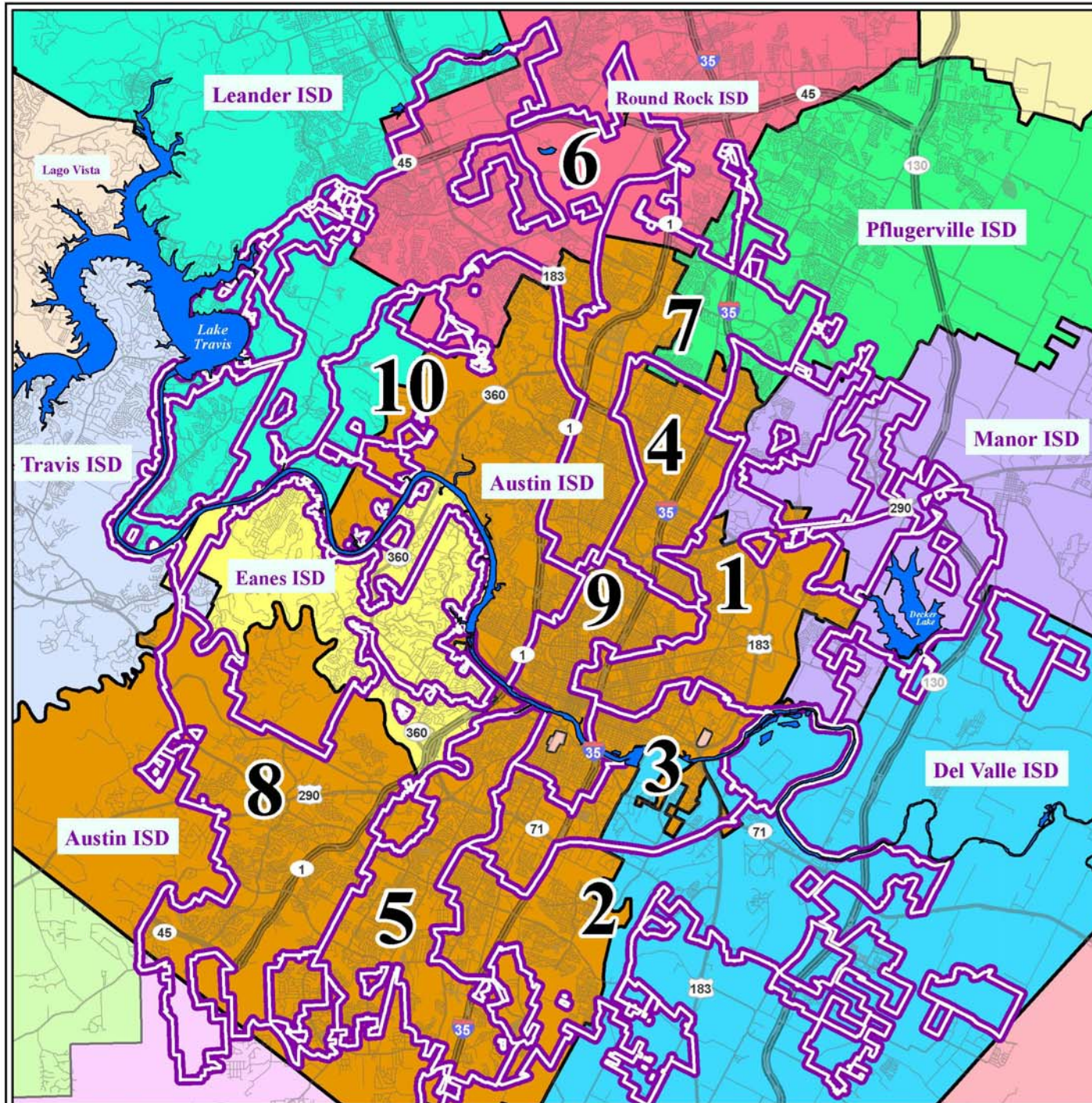
Median Family Income by Council District



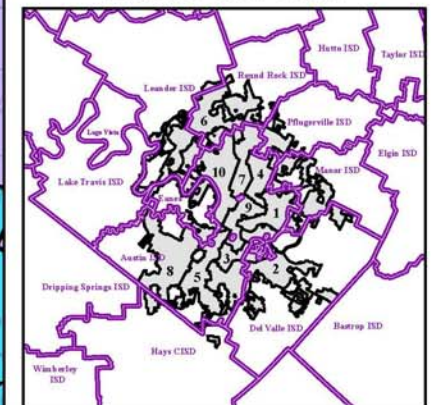
Poverty Rates by Council District



City of Austin City Council Districts with central Texas Independent School Districts



Zoom-out Box



Austin, Texas



