

City of Austin, Travis County and Austin Independent School District Joint Subcommittees

Residential and School Mobility Work Group

Presentation by Susan Millea, Ph.D.

December 19, 2014



Introduction

- Housing and School Mobility Work Group
 - February, 2010 White Paper
 - High rates of school/residential mobility linked to many negative outcomes
 - Need for systematic, systemic change
 - **Connecting the Dots**
 - Extensive systemic change efforts within AISD
 - Additional efforts City, and County
 - *Many* community partners (health, social services, education)
 - Collaborations (SRAP, RB21, CTAN, E3, COH, CAN, others)
 - School Based Family Resource Centers as “Best Practice” Intervention
 - Family outreach/engagement, service linkage and coordination, community stabilization
 - Funding for Integrated Case Management pilot, costs shared equally across City/County/AISD
 - Original budget: \$45,000 year 1; \$36,00 years 2 and 3 (i.e. \$12,000 per entity)



Today's Purpose

- **Update** on Housing and School Mobility Work Group
- **Two Action Requests of Joint Subcommittees:**
 - Continue to fund software for Family Resource Centers for CY 2015
 - Contract renews annually on calendar year schedule.
 - Recommend to respective entities that they sustain funding for software going forward
- **Context**



Child Poverty in Travis County

Travis Co. Focus on Poverty, 2011 (ACS 2005-2009)

- 25% Kids in Poverty
- 48% Kids at/below 200% poverty
 - 112,000 children
- Ethnic Disparities

Suburbanization of Poverty

- Austin MSA, 162% increase 2000-2012
- Highest rate in the US



Poverty Rates by Age Group, Race and Ethnicity

Austin MSA

American Community Survey, 2012, 1-year Estimates Series, Table B17000

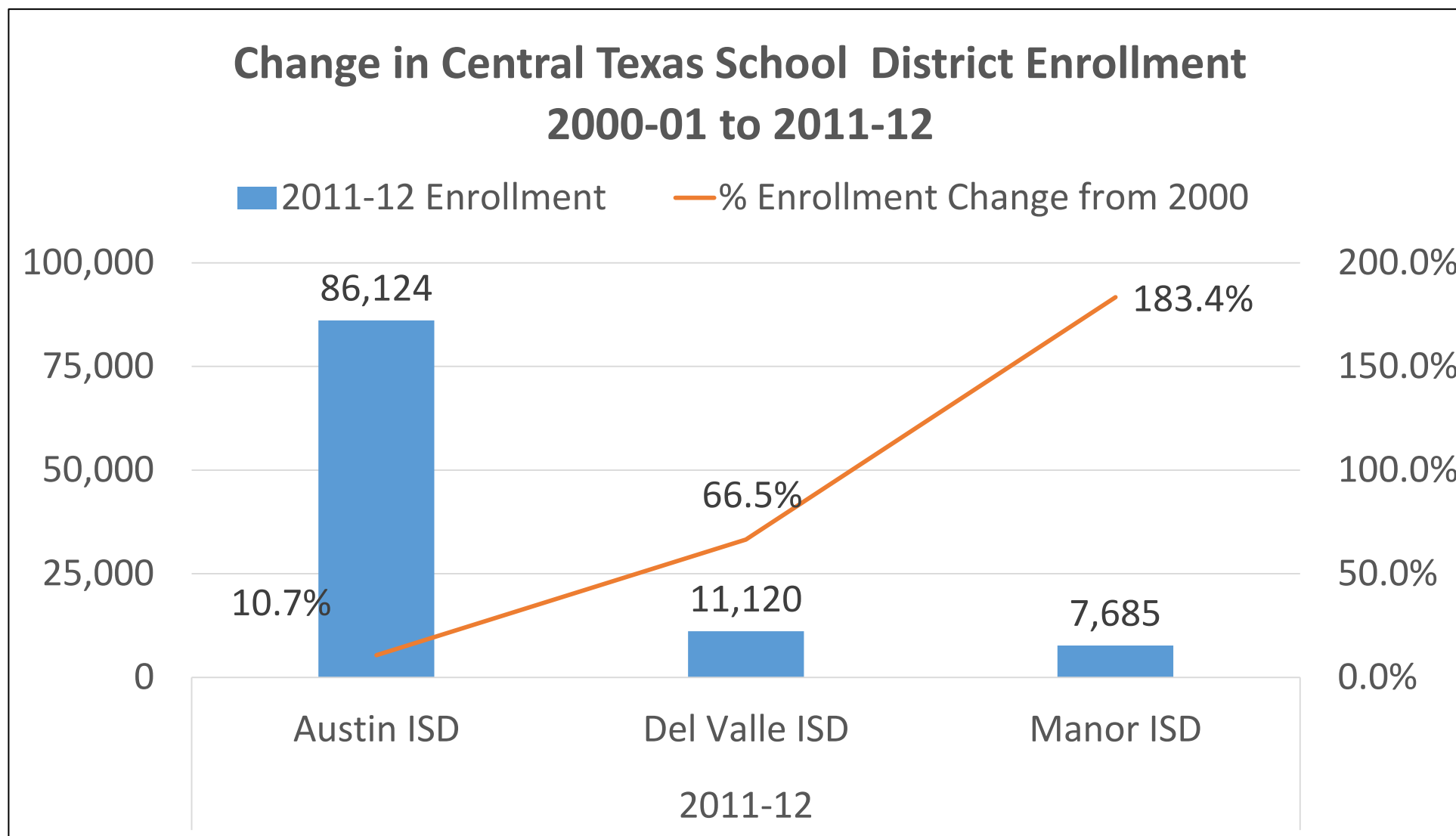
Table I: Poverty Rates (1)

Category or Group	Overall Population	non-Hispanic White	African American	Hispanic	Asian
Overall Population	15.5%	9.0%	27.6%	24.5%	11.7%
Under Age 5	22.1%	7.2%	50.9%	33.2%	4.8%
Under Age 18	21.2%	7.3%	42.2%	32.8%	6.0%
Age 65 Plus	6.9%	4.8%	13.6%	13.6%	13.4%

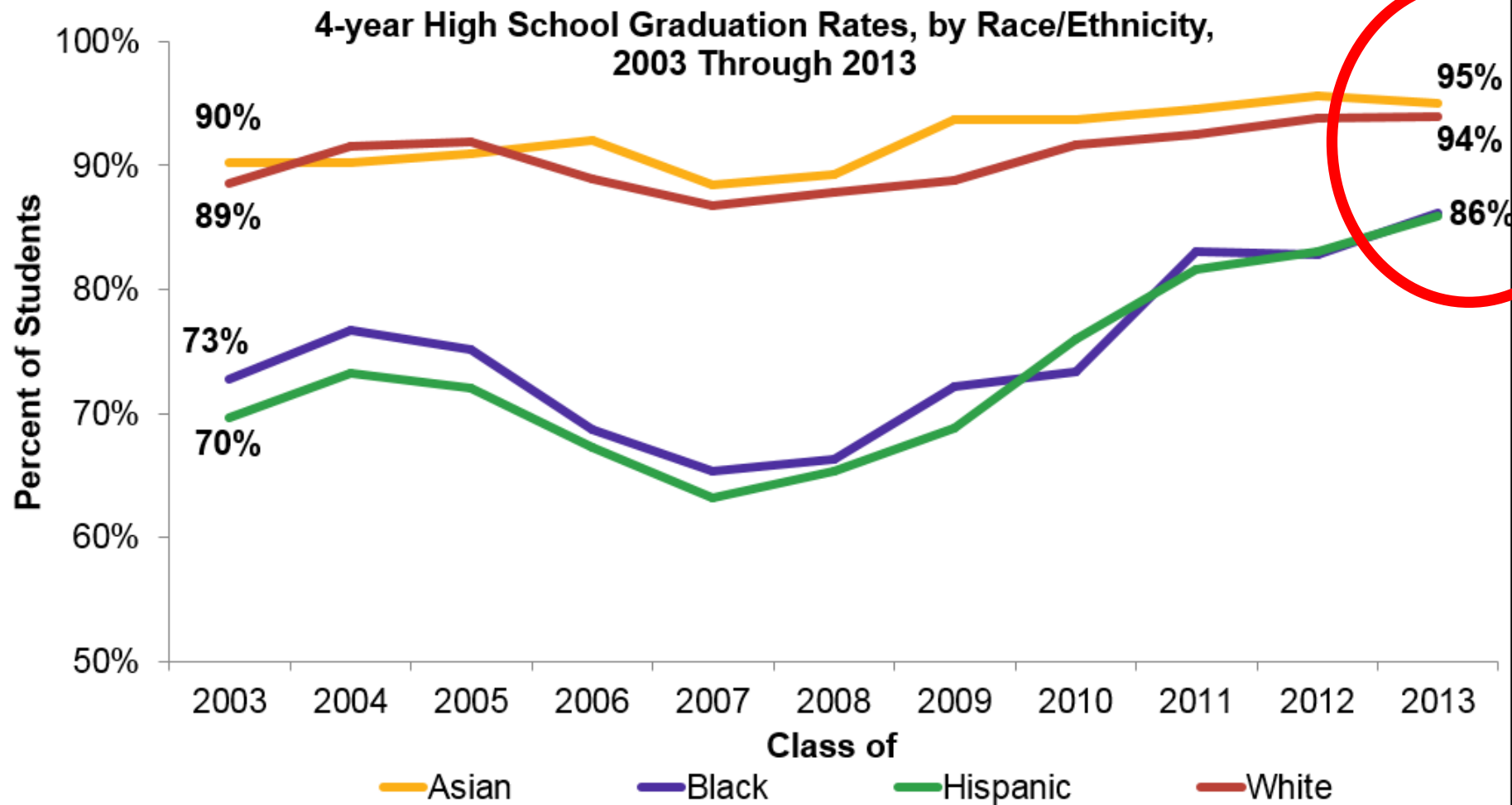
NOTES:

(1) The source for data behind this table on Poverty in metropolitan Austin is the American Community Survey, which is produced by the US Census Bureau. Data for this table are from the 2012 1-year Estimates Series. Poverty rates are calculated for only the portion of the total population that lives within a household; poverty rates are not calculated for institutionalized persons or individuals living within Group Quarters situations. The Poverty Rate is a function of total annual household income and the number of individuals within a household. The 2012 Poverty threshold for a family of four was \$23,550

School District Enrollment Growth

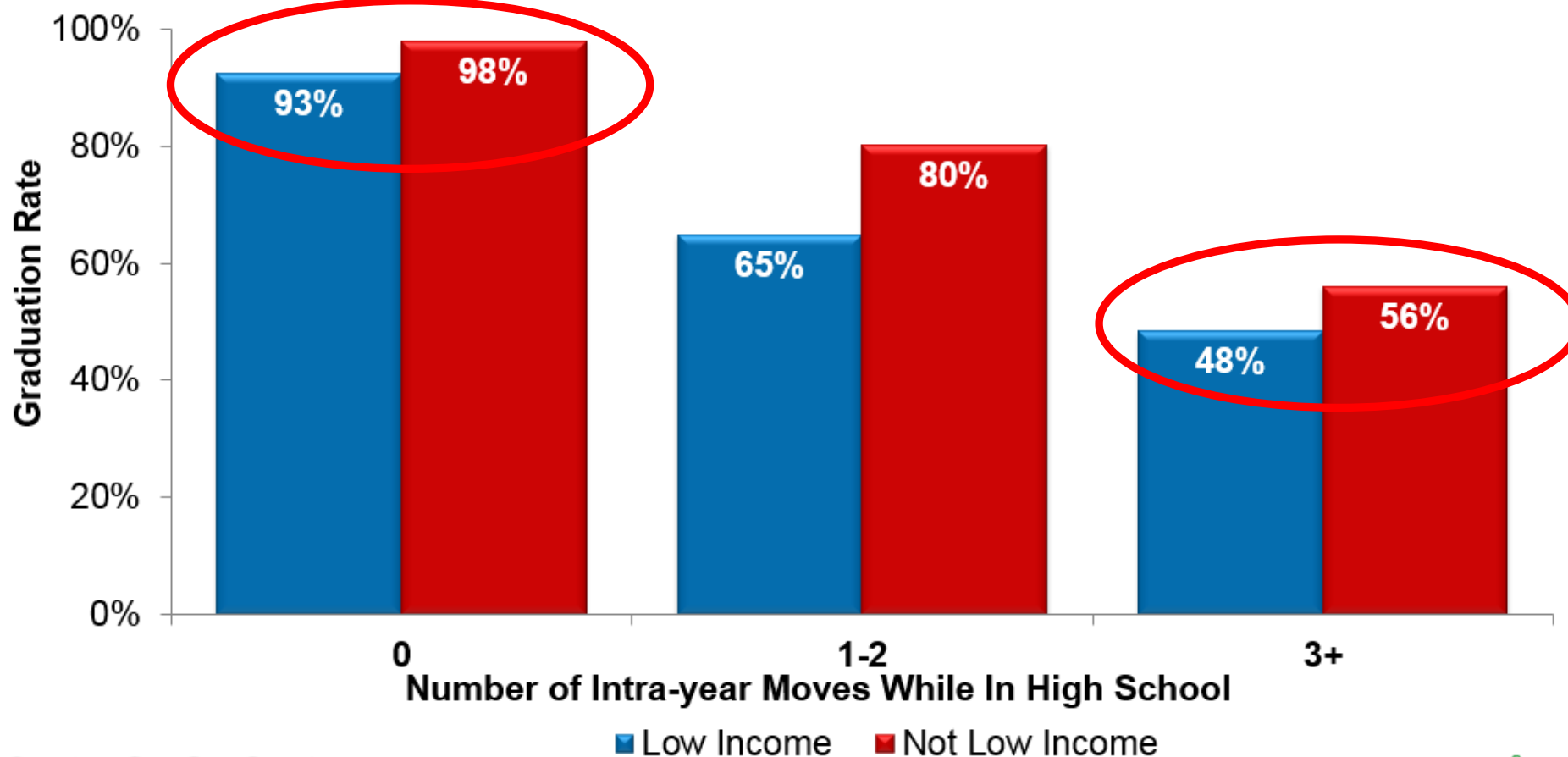


Gaps in Central Texas High School Graduation Rates Declined Since 2007



Greater Mobility Associated with Lower Graduation Rates

4-year High School Graduation Rates, by Number of Intra-year moves Experienced While in High School, Central Texas, Class of 2013



JSC Housing/School Mobility Work Group

What are we doing?

What's the value add of the technology investment?

What are we learning?



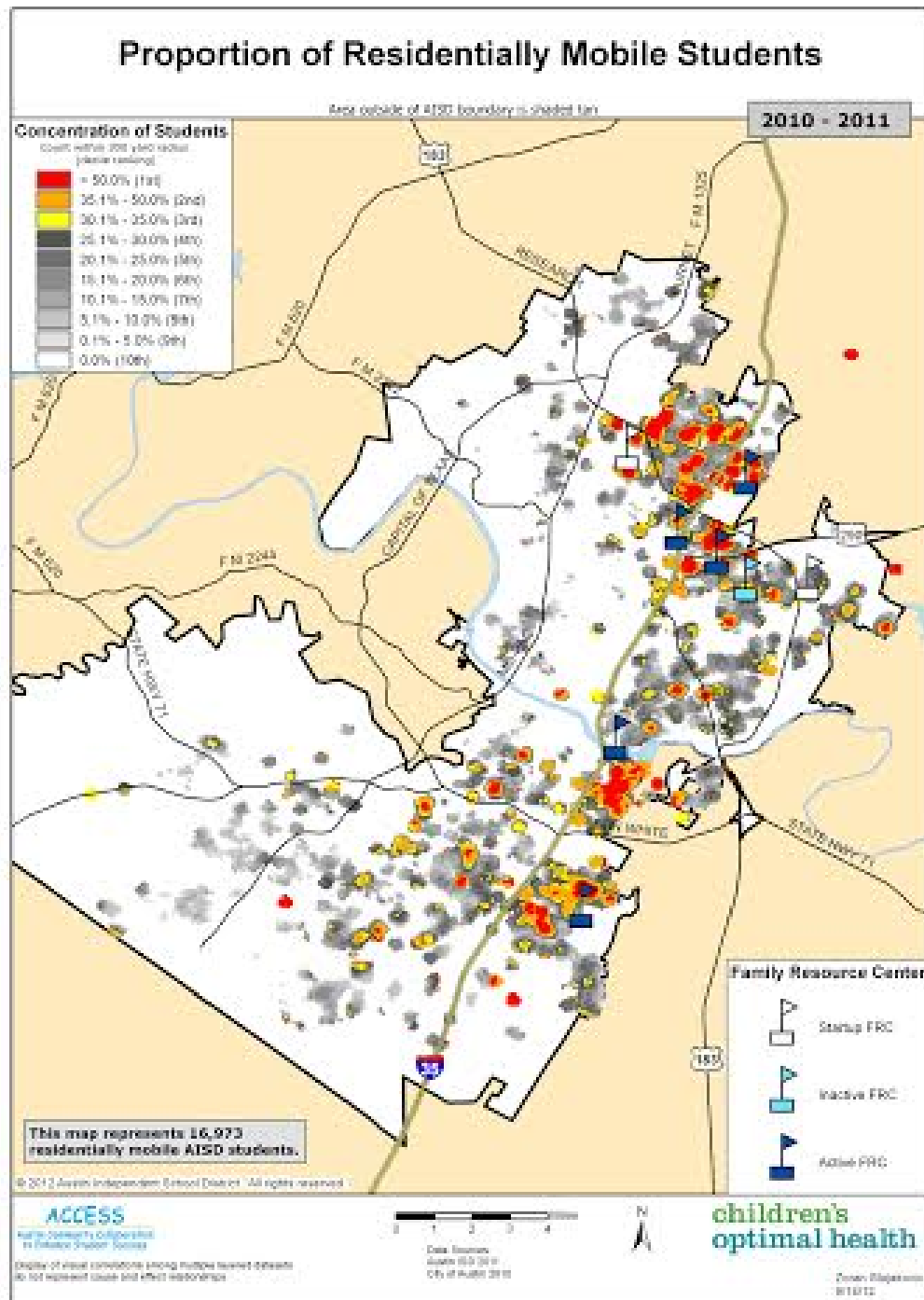
JSC Housing/School Mobility Work Group

Chair: Stephanie Hayden, City of Austin

Membership

- AISD
- City of Austin
- Travis County
- The Austin Project
- Austin Voices for Education and Youth
- Austin Tenants Council
- Caritas
- HousingWorks
- Children's Optimal Health





JSC Housing/School Mobility Work Group

- AISD/COH mapping study identified neighborhoods where residential mobility is concentrated
- Verified that Family Resource Centers are targeted in these neighborhoods
- COH held community summit with panel of experts (housing, utilities, businesses)
- Made policy recommendations re: housing/transportation
- Recommendations incorporated in the Families with Children Taskforce report

What's the value add of the technology?

- Improved knowledge for action
 - Families, students, needs, service gaps
 - What works, in what dose/frequency
- Stronger systems (human and technology)
- Cost efficiencies
 - Contract with vendor for SAAS, largely hardware independent, current
 - Scalability efficiencies (add programs at existing campuses, add campuses)
- IMPACT: better outcomes for youth



JSC: Integrated Case Management Pilot

- **JSC Focus: Chronic Absenteeism, Dropout Prevention, Judicial Supports**
 - Pilot to address information/knowledge gaps with improved technology
- **Data and Systems-related Goals of Pilot**
 - ID individual students in need (including non-school factors, family instability)
 - Address parental consent issues for data sharing across systems
 - Obtain an unduplicated count of who is receiving which services, from whom
 - Track efforts to assist, provide progress monitoring
 - Provide aggregate reports for performance management
 - Report student outcomes related to services received
 - Internet, web-based tool used by community partners who serve students
 - Data system interoperability (integrated data systems)

Role of School Based Family Resource Centers

- FRCs work closely with AISD, City and County to provide needed services to families with school-aged children
 - Extend, rather than duplicate, capacity of City/County services
 - Location on campuses provides easier access for families
 - Re-enforces importance of school attendance and success
- FRCs assist families on targeted campuses, as well as feeder schools
 - Family-centric, strength based, encourage school engagement
- Activities: outreach, information/referral, parent and community engagement, adult and youth classes, community development, health promotion, service coordination, case management
 - Significant coordination role during the flood response in South East Austin

Timeline for Software Pilot

06/06/2010	JSC Joint Resolution
02/17/2011	City/Count/AISD Interlocal Agreement Signed
10/15/2011	RFP Developed, submitted proposals reviewed
01/01/2012	Vendor Contract Signed with Social Solutions for Efforts to Outcomes (ETO)
Year 1 (2012)	Development Focus: Data model design, blueprint developed, system build, initial training, initial testing, system revisions, implementation
Year 2 (2013)	<u>Data Entry for School Year 2012-13</u> (Parent Consents, Family Needs Surveys, Encounters and Services Tracking, Family Developmental Matrix) Development Focus: AISD data bridge, AISD consent notification system, electronic signature capacity; Report development, testing
Year 3 (2014)	<u>Data entry for School Year 2013-14</u> Development Focus: Referral tracking; tracking class participation, groups, community meetings; parent/student engagement; eCST-ETO interoperability; report development integrating FRC and AISD student data <u>Data entry for School Year 2014-15</u>
12/31/2014	Vendor Contract with Social Solutions for ETO expires

What are we learning?

Integrated Case Management Pilot

- (Voluntary) Parental Consent allows limited data to be shared across multiple identified partners for the purpose of serving the child/family.
- AlSD data bridge provides access to student data which can be integrated with service provider data for analysis.
- ETO provides an unduplicated count of who is receiving which services.
- By the end of this school year ETO will be able to provide:
 - Parent engagement, Class and Group participation, Referral tracking

What are we learning?

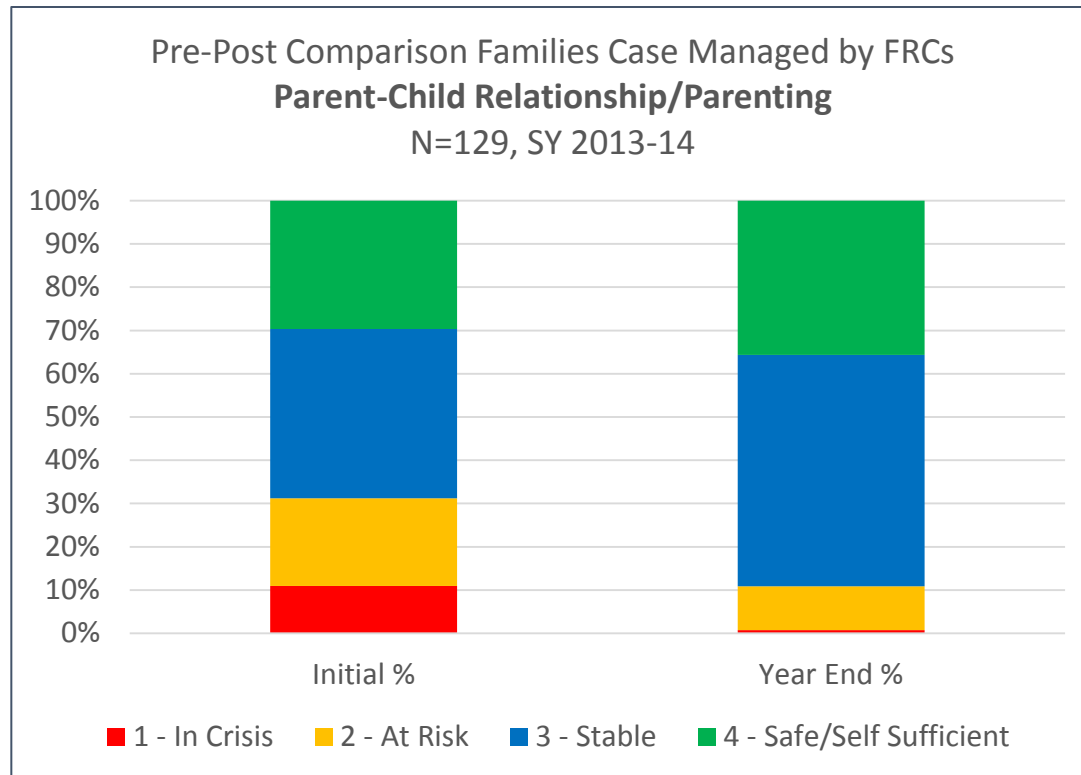
Integrated Case Management Pilot

- City/County/School District/NPO Partnerships are challenging
 - But rewarding, and lead to improved outcomes for children/families
- The process of information technology development identifies areas of need for (human) systems development
- System Administrator role is essential to a data collaboration
- Data entry affects capacity/workflows for direct service staff, needs consideration
- Investment in information infrastructure must include role review and may require personnel investment

Measuring FRC Case Management IMPACT

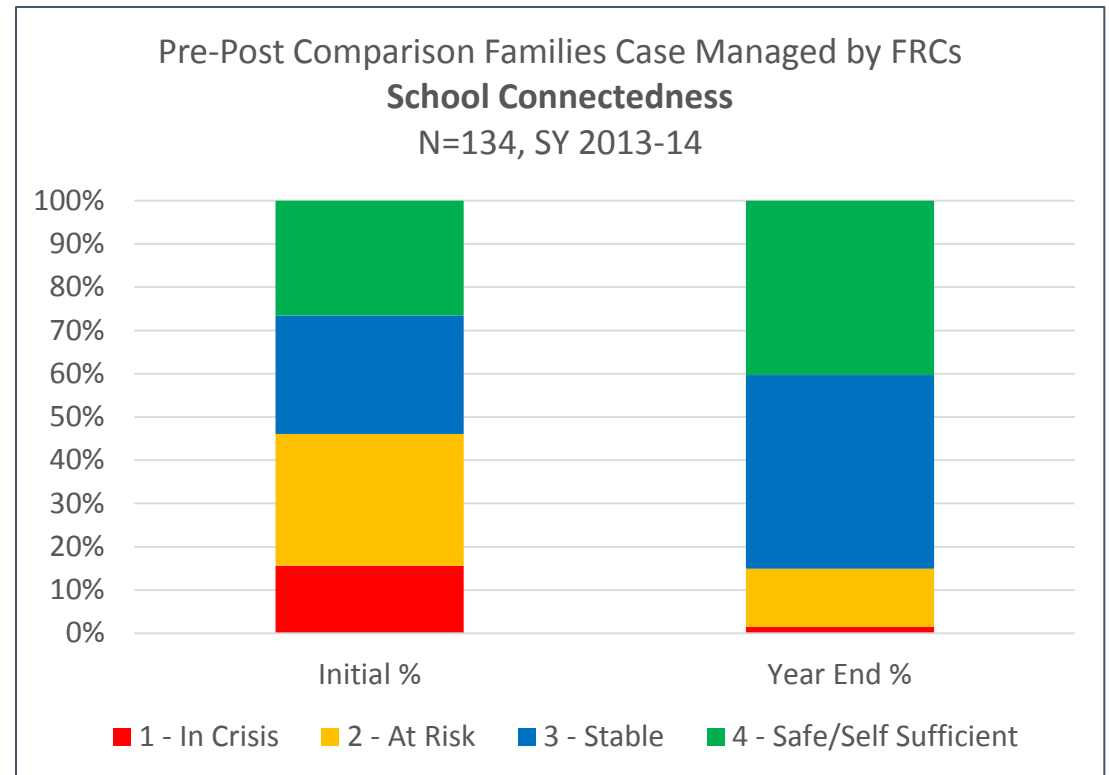
Parent Child Relationship/Parenting

Reduced Proportion In Crisis/At Risk 20.4%



School Connectedness

Reduced Proportion In Crisis/At Risk 31.2%



Action Request for Joint Subcommittees

- Fund contract with Social Solutions (vendor) for CY 2015
 - \$15,000 each from City, County, AISD \$45,000 total
 - \$36,000 Enterprise License for implementation in 7 sites
 - \$9,000 System development, training, report development, support
- Continuation funding for Social Solutions ETO Software
 - JSC Members recommend to respective entities that continuation funding be included in respective budgets going forward

Thank You!

Questions?

