

ZONING CHANGE REVIEW SHEET

CASE NUMBER: C14H-2015-0003

HLC DATE:

March 23, 2015

PC DATE:

APPLICANT: City of Austin Historic Landmark Commission

HISTORIC NAME: Stasswender House and associated buildings

WATERSHED: Waller Creek

ADDRESS OF PROPOSED ZONING CHANGE: 807 E. 16th Street, 807½ E. 16th Street, 809 E. 16th Street, 811 E. 16th Street, 1506 Waller Street.

ZONING FROM: SF-3-NP to SF-3-H-NP

SUMMARY STAFF RECOMMENDATION: Staff recommends the proposed zoning change to SF-3-H-NP for the Stasswender House only. The other houses on the site do not have sufficient significance or ties to the Stasswender House to warrant the creation of a historic district including all of the house, or for individual landmark designation.

QUALIFICATIONS FOR LANDMARK DESIGNATION:

The Stasswender House (811 E. 16th Street) has significance in the areas of architecture and historical associations with Anton Stasswender, the city's premier stonecutter and grave monument maker.

HISTORIC LANDMARK COMMISSION ACTION:

PLANNING COMMISSION ACTION:

DEPARTMENT COMMENTS:

These buildings were brought to the attention of the Commission by citizens seeking to preserve the Stasswender House and possibly associated cottages on 16th Street and at 1506 Waller Street. The Commission agreed to initiate the historic zoning case on all of the structures brought to their attention by the citizens. The property owner is agreeable to historic zoning for the Stasswender House, but opposes historic zoning for the cottages on 16th Street and the house at 1506 Waller Street. These houses have been previously reviewed by the Commission on demolition permit applications which have now expired. The Commission decided to release the demolition permits upon completion of documentation packages for the associated houses.

The citizens are requesting that the Commission consider several scenarios for the preservation of the various structures on this site – first the preservation of the Stasswender House and all of the associated cottages; second, the preservation of the Stasswender House and the house at 1506 Waller Street, which has a tie to the Stasswender family; and finally, for the preservation of the Stasswender House only. The property owner is agreeable to the designation of the Stasswender House, but will not agree to the designation of the other houses subject to this case.

CITY COUNCIL DATE:

ACTION:

ORDINANCE READINGS: 1ST 2ND 3RD

ORDINANCE NUMBER:

CASE MANAGER: Steve Sadowsky

PHONE: 974-6454

NEIGHBORHOOD ORGANIZATION:

Organization of East Austin Neighborhoods

BASIS FOR RECOMMENDATION:

Architecture:

811 E. 16th Street: One-and-a-half story, rectangular-plan, front-gabled stucco house on a raised basement with a central, partial-width, shed-roofed independent porch on square posts and piers; single and paired 1:1 fenestration, including a pair of 1:1 windows in the tympanum of the front gable; sidelights surrounding the door; Craftsman-style front door. The house has a noticeably steep pitch to the gabled roof.

807 E. 16th Street: One-story, rectangular-plan, front-gabled frame bungalow with a partial-width, inset porch under a slightly projecting secondary front gable; round, wood porch posts; single and paired 1:1 fenestration. The house has two front doors, at right angles to each other, off the front porch.

807½ E. 16th Street: One-story, rectangular-plan, front-gabled frame cottage with a front-gabled independent entry hood; off-set front entry; single and paired 1:1 fenestration.

809 E. 16th Street: One-story, rectangular-plan, side-gabled, frame cottage with a front-gabled, independent entry hood; off-set front entry; single and paired 1:1 fenestration.

1506 Waller Street: One-story, rectangular-plan, clipped front-gabled frame bungalow with a clipped front-gabled entry hood; off-set front entry; single and paired 1:1 fenestration.

Historical Associations:

811 E. 16th Street – The Stasswender House.

The Stasswender House was built around 1928 by Anton and Anna Stasswender, who moved here from across Waller Street. They had previously rented the house at 901 E. 16th Street. Both Anton and Anna Stasswender had been born in Germany, as had their oldest daughter, Katherine (born around 1910). Anton Stasswender was a very prominent stone cutter and grave monument maker in Austin. He started his career in the late 1910s working for Aubry Gooch, a granite and limestone contractor, who had his stone yard at 1400 E. 4th Street. Around 1920, Stasswender moved to 901 E. 16th Street, very close to the City Cemetery (Oakwood) and started his own business, crafting “monuments, tombstones, and all kinds of architectural marble work.” His stone yard was at Gooch’s old site at 1400 E. 4th Street. Stasswender soon partnered with John Schmidly, establishing Stasswender and Schmidly with their stoneworks on E. 4th Street. They specialized in marble and granite. By 1926, he had moved his monument yard to 901 E. 16th street, the house he had rented, adjacent to Oakwood Cemetery. He maintained his display yard at 901 E. 16th Street when he built this house in 1928, and kept the manufacturing at the old E. 4th Street site. In the early 1940s, Stasswender expanded his business to include concrete burial vaults. After World War II, he changed the name of his enterprises to the Stasswender Granite Works, which specialized in marble and cut stone monuments, as well as concrete burial vaults. His son Tony (Anton, Jr.) became the manager of the family enterprises in the late 1940s. After Anton Stasswender died in 1954, his widow Anna took on the business, with Tony Stasswender as the manager. Tony Stasswender then partnered with Grogan Howell for form the Howell-Stasswender Memorials on Hancock Drive. Anna Stasswender remained in this house until her death in 1976. After her death, the house became a rental property consisting of several apartments and rooms for rent.

807, 807½ and 809 E. 16th Street

The houses at 807, 807½, and 809 E. 16th Street are just to the west of the Stasswender House. The houses were all built in the early to mid-1930s by Anton Stasswender as rental properties.

The house at 807 E. 16th Street is actually on a separate lot; the other houses are on the same lot as the Stasswender House at 811 E. 16th Street.

It does **not** appear that he built these houses for any of his own workers, but instead, rented them out. None of his tenants were connected to the Stasswenders' business, although his son, Tony, lived in another adjacent house at 1506 Waller Street. The houses are configured on the lot at a right angle to each other; the house at 807 E. 16th faces the street; the house at 807½ E. 16th faces the adjacent Stasswender House to the east; and the house at 809 E. 16th is set at the back of the lot, and faces the street, with the front yard of 807½ and the side yard of 807 as its front yard. The back of Tony Stasswender's house at 1506 Waller Street faces the side of the house at 809. As an aside, the house at 1506 Waller Street, another early 1930s cottage, was originally rented out to others; Tony Stasswender and his family were not the original occupants.

807 E. 16th Street:

The house, like that at 807½ E. 16th Street, dates from 1931. The first known tenants were Claude H. Miears, a prominent ear, nose, and throat physician, and his wife, Edith, who rented the house from 1931 until 1940, when they bought a house on Shoalwood Avenue and moved there. Dr. Miears had his office in the Scarbrough Building. He had grown up in Lockhart, Texas, attended college and medical school in Oklahoma, and was licensed to practice medicine in Texas in 1926. He practiced in Corsicana in the late 1920s, and came to Austin in 1930. He and Edith moved into this house shortly after their move to Austin.

In 1940, the house was rented to a widow, Nora Lee Branch, and her children. Nora Lee Branch was a cook at the State School, and had moved here from Fort Worth. She is not listed in an Austin city directory. Nils Axel Blomquist, and his wife, Adele, rented the house in the early 1940s; he was a salesman for the Hicks Rubber Company, which was a Humble gas station on Congress Avenue that also specialized in tires and batteries. From the mid- to the late 1940s, the house was rented by widower Charles C. Flesher, and his daughter, Frances White. Flesher worked for the WPA; Frances was a book-keeper. A series of tenants occupied the house in the late 1940s and early 1950s; it was then rented by Theron and Alice Park, who lived here from the mid-1950s until the late 1970s. By the time they moved here, the Parks were retired; he had grown up on a farm in rural Travis County, and in 1940, was listed as a farm laborer in Grape Creek, Texas, near San Angelo in Tom Green County.

807½ E. 16th Street:

Like the house at 807 E. 16th Street, this house also dates from around 1931, but is a completely different style than the house at 807, which is very bungalow-like in its design, whereas the house at 807 ½ is a very plain house with a minimal front porch. Dell Martin, and his wife, Corinne, were the first tenants of the house, and lived here from around 1931 to around 1934. Dell Martin worked in filling stations in the 1930s and 1940s, although the city directories do not list his occupation. The house was vacant in the mid-1930s, then rented by Lonnie A. Farris, and his wife, Georgia. Lonnie Farris was a barber; Georgia Farris was a private secretary for the State Board of Insurance. They lived here until around 1943, when the house was rented by Bertha K. Rolf, a spinster who had lived with her widowed brother before moving into this house. Bertha Rolf's parents had come from Sweden, and she was buried in the New Sweden Cemetery in northeastern Travis County when she died in 1958. She never had an occupation listed in the city directories. After Ms. Rolf's death in 1958, the house was home to a series of short-term tenants, or was listed as vacant.

809 E. 16th Street:

The house at 809 E. 16th Street dates from 1934, and is different in style from both 807 and 807 ½ E. 16th Street. The first tenants of the house were Cecil V. and Katie (or Kalei) Pollard, who lived here from around 1934 to around 1936. Cecil V. Pollard was an Idaho-born instructor in Germanic languages at the University of Texas. Pollard had done his undergraduate work at the University of Utah, and had gone to Germany in the mid-1920s as a Mormon missionary. He earned his master's in Germanic languages from the University of Texas in the early 1930s, and taught German at UT until the late 1950s, also serving as Chairman of the Department of Germanic Languages at UT in the 1940s and early 1950s.

From around 1936 to around 1950, the house was rented by Bailey B. Compton, and his wife, Frances. Bailey Compton was born in Austin, and was a tailor, then a clothes cleaner and dyer, first for Kelly Smith, then for George Wesley. After service in World War II, he returned to Austin and worked for the hardware business of Sterzing and Miles on E. 6th Street. Before World War II, Frances Compton had been a nurse for Dr. Benjamin Eppright; she does not list an occupation in the city directories after 1945. From around 1953 until her death in 1979, the house was rented by Margaret (Margarethe) Wenkheimer, who had been born in Berlin, Germany, and had managed a farm in Kansas for many years before moving to Austin and her retirement.

1506 Waller Street:

The house at 1506 Waller Street dates from 1934. The first tenants of the house were W.J. Shaw, Jr., and his wife, Eunice. W.J. Shaw, Jr. was the son of W.J. Shaw, who owned the W.J. Shaw Furniture Company on 6th Street. They rented the house until around 1936. There were a series of renters until around 1946, when Tony and Blanche Stasswender rented the house. Tony was managing the Stasswender Granite Works for his parents. They lived here until around 1960. The house then became a rental unit again with tenants including a carpenter and a paperhanger.

PARCEL NO.:

LEGAL DESCRIPTION: E. 70 feet of Lots 6 and 7, and the south 53.5 feet of the east 70 feet of Lot 8, Block A, Outlot 42, Division B, Rector's subdivision.

ESTIMATED ANNUAL TAX ABATEMENT: \$ (owner-occupied); city portion: \$2,000 (capped).

APPRAISED VALUE: \$

PRESENT USE: Residential

CONDITION: Fair to good

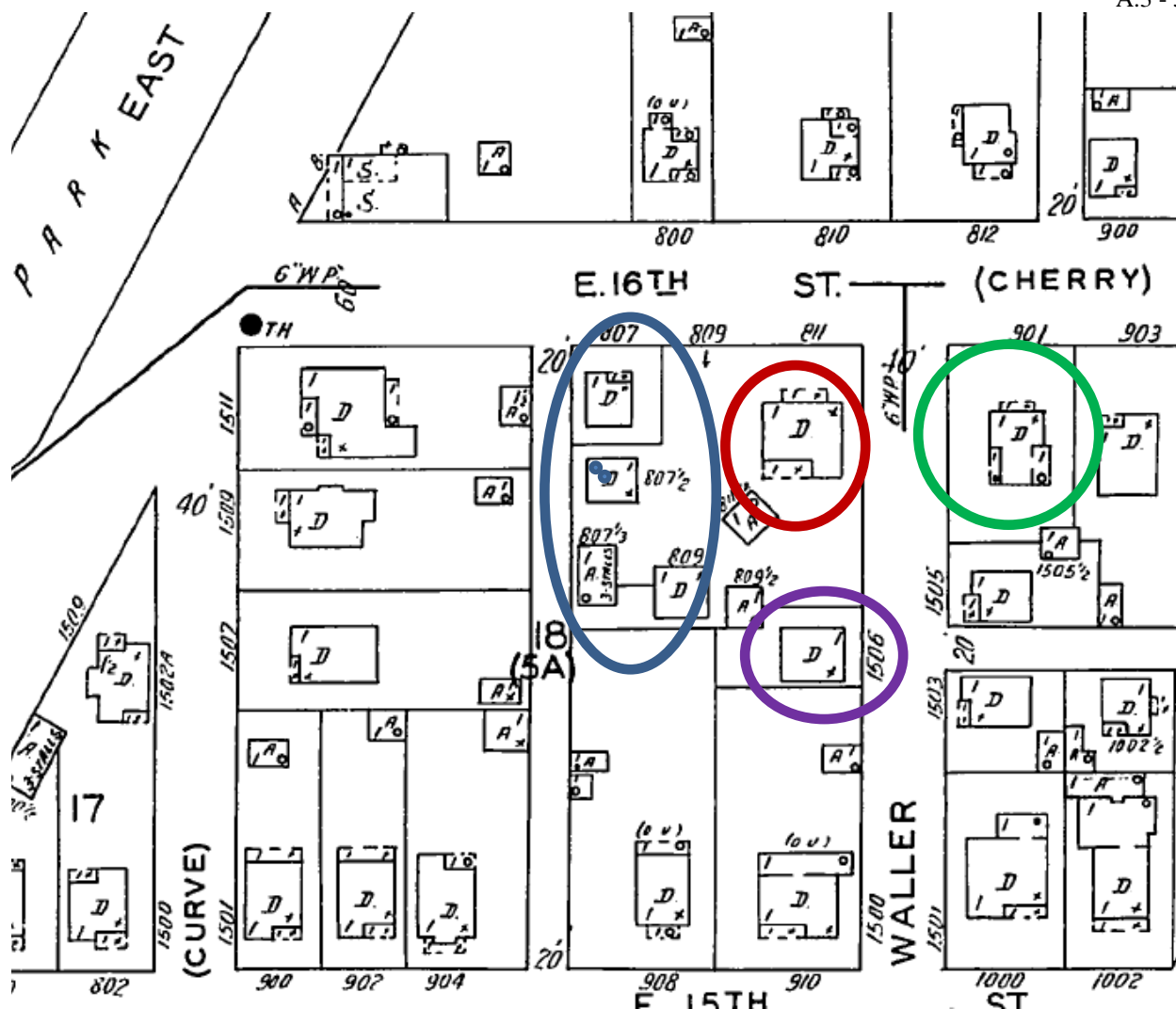
PRESENT OWNERS: WJP Swede Hill LLC

DATE BUILT: ca. 1928 – ca. 1934

ALTERATIONS/ADDITIONS: Very few.

ORIGINAL OWNER(S): Anton and Anna Stasswender

OTHER HISTORICAL DESIGNATIONS: None.



The 1935 Sanborn map shows the Stasswender House at 16th and Waller (red), and the houses at 807, 807 $\frac{1}{2}$, 809 E. 16th Street (blue) and the house at 1506 Waller Street (purple). The Stasswender's first house in the neighborhood, at 901 E. 16th Street, is shown in green.

FINE MONUMENTS MADE BY LOCAL CRAFTSMAN

One who visits a monument manufacturing plant would not expect to find a romantic side to this industry, yet Anton Stasswender, owner of the Stasswender monument concern at 1400 East Fourth street can furnish ample proof that there is more than just a mere routine of stone carving to this particular business.

On one occasion a few years ago a well known Chinese resident died and members of the family wanted a memorial marker placed over his grave. An inscription in Chinese was ordered placed on the stone. Mr. Stasswender designed the pattern for the stone and made a drawing including the inscription and sent it to the family. The inscription was approved, but Mr. Stasswender wanted to be doubly certain that the inscription, placed on enduring granite, would be accurately worded and all of the Chinese symbols properly designed.

Accordingly he sent a blueprint of the pattern with the inscription to China. It was returned approved and Mr. Stasswender executed the order.

Other languages whose verification is difficult and requires similar checking are Russian and Assyrian according to Mr. Stasswender, who has turned out monuments with inscriptions in these languages. German and Hebrew inscriptions also have been cut into stone by this well known craftsman.

Austin and Central Texas residents who desire a fine monument or memorial are assured by Mr. Stasswender they will get one of the best stone obtainable and highest quality work handled by this well known craftsman.

THIS WELL KNOWN CRAFTSMAN.

Mr. Stasswender has had nearly one-third of a century of experience in the designing and manufacture of high grade markers, monuments and mausoleums, which is another assurance to the patron of quality workmanship.

Every step in the manufacture of a monument, marker or mausoleum from the first finishing of the granite to the finished product is handled in the Stasswender plant, which is completely equipped for this class of work. During the 19 years in which the plant has been operated under Mr. Stasswender's direction, its volume of business has grown steadily until today it is one of Austin's best known industries.

Mr. Stasswender personally designs and executes the pattern for each monument or mausoleum and a corps of highly trained workman under his supervision turns out the finished stone product.

Those who are contemplating the purchase of a fine memorial stone or need ornamental stone for building purposes are invited by Mr. Stasswender to visit his plant and let him furnish cost estimates.

Austin Statesman, November 24, 1934

CHISELED IN GRANITE

So After 18 Long Years Everybody Gets Ahead

By BILL BRAMMER

This is the story of an elaborate family monument designed, cut and lettered in 1927 by a Bavarian immigrant which brought happiness and a bit of wealth to a Travis County family some 18 years later.

Tony Stasswender tells the story. He operates the Stasswender Granite Works at 1400 East Fourth Street. He has succeeded his father, a native of Bavaria, in this line of precision work.

It was 26 years ago when Tony's father, Anton Stasswender, was requested to turn out a king-sized monument for a nearby farm family. It was a big assignment, requiring large, hand-cut, round raised letters.

The base of the stone was six feet in length, two feet thick and a foot and a half in height. The upper part was four feet long, a foot in thickness and three feet high.

Anton, who had studied sculpture in Bavaria and Italy, finally finished the project—but then learned that the family would not be able to pay for it. The family, in fact, had lost the farm.

The elder Stasswender kept the stone, planning, perhaps, to remove the name and keep the chunk of granite in stock. He never got around to it, however, and the stone was still sitting in his establishment 18 years later, in 1945.

That was when another Travis County farm couple arrived. They were looking for a family stone—a big one, in fact—something like

that giant chunk of granite sitting in the corner.

Then they noticed that the old monument bore the same family name as their's. Would Stasswender sell it?

He certainly would sell it. Anton, in fact, was so happy to find a family with the same name as that on the monument that he would sell it for what it cost him in 1927—\$325.

So Anton had the big monument delivered to the farm. There, the lady of the house began digging around in a coffee can to pay for the stone. This family didn't believe in banks, and she started pulling out a handful of old fashioned money—big bills, rare coins and such.

Anton didn't pay any attention until he went to the bank to deposit the cash. The teller called his attention to the coins and estimated that some of them were worth as much as \$60 more.

Stasswender took the money back to the family and relayed the information. The lady then began digging in the coffee can again and came up with a whole sockful of the old currency.

This was again taken to the bank where it was learned that the money was worth almost \$1,000 more than its face value.

As it turned out, the farm family got its monument and made a neat profit on the exchange—and Stasswender got rid of the big monument after 18 years. Something of a long-term investment, says Tony.

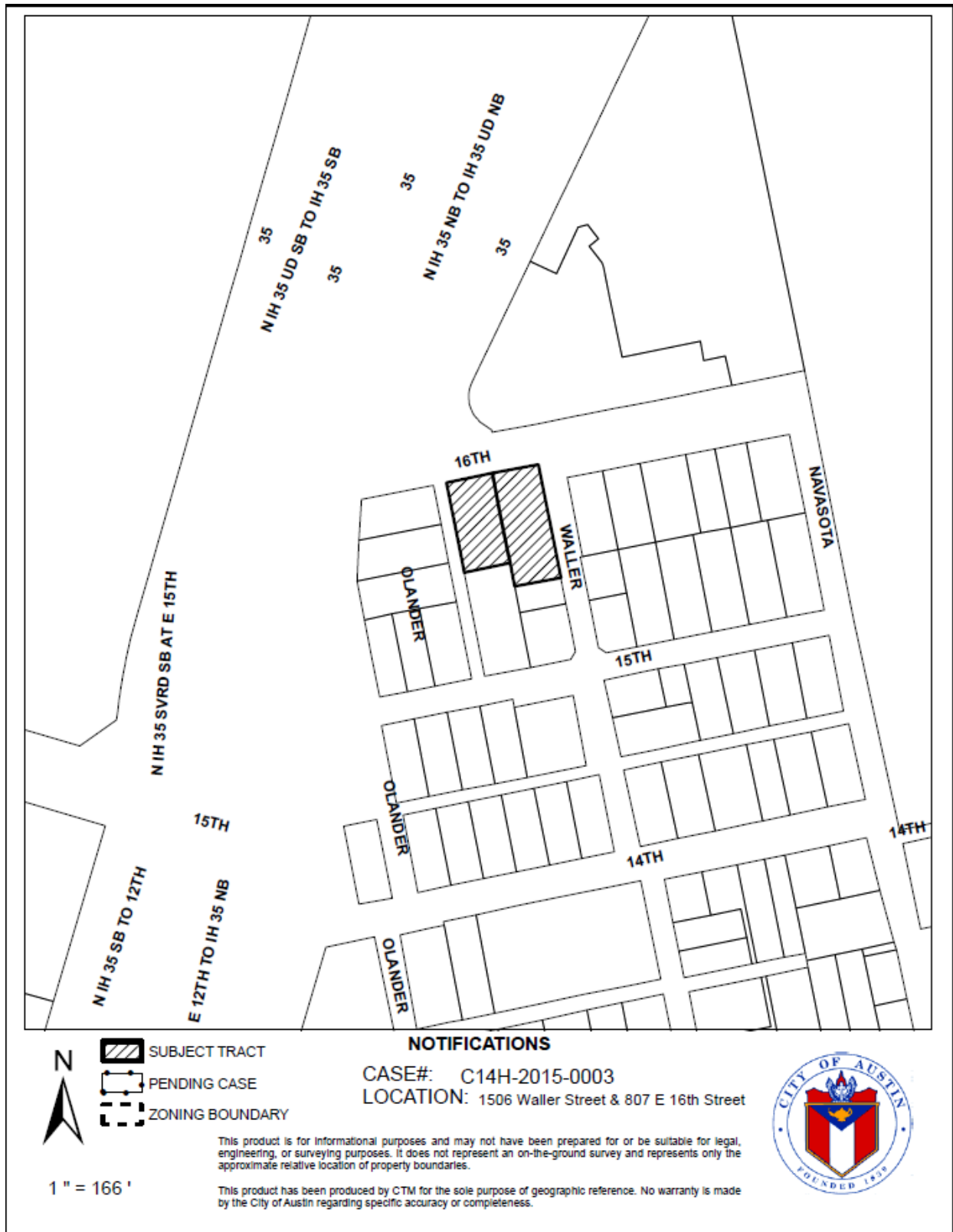


STORY IN STONE—Tony Stasswender, operator of the Stasswender Granite Works, measures off a big chunk of granite similar to the stone which brought a great deal of happiness and a bit of wealth to Travis

County family in 1945. Tony's father, Anton, turned out a king-sized family monument in 1927 which was sold 18 years later at a profit to everybody concerned. — (Neal Douglass Photo.)

Austin Statesman, October 22, 1953

LOCATION MAP



811 E. 16th Street
ca. 1928



OCCUPANCY HISTORY 811 E. 16th Street

City Directory Research, Austin History Center
By City Historic Preservation Office
October, 2007

- 1987 Kelly Brown, renter
Employed by Texas Mid-Continental Oil and Gas Association, a non-profit association, 400 W. 15th Street.
½: Arturo and Maria Borrego, renters
Employed by Contessa Food Service, Contessa dormitory, 2706 Nueces Street.
NOTE: The directory indicates that Arturo and Maria Borrego were new residents at this address.
- 1981 No return
½: Ida M. Manor, renter
No occupation listed
NOTE: The directory indicates that Ida M. Manor was a new resident at this address.
- 1975 A: Ann Stasswender, owner
Widow, Anton Stasswender
Retired
B: Thomas Bertschler, renter
Student

- 1969 Ann Stasswender, owner
Widow, Anton Stasswender
Retired
- 1963 Anna Stasswender, owner
Widow, Anton Stasswender
No occupation listed
- 1957 Anna Stasswender, owner
Widow, Anton Stasswender
No occupation listed
Also listed is Anton Stasswender, the proprietor (with Grogan L. Howell), Howell-Stasswender Memorials, 2715 Hancock Drive; and Katherine Stasswender, no occupation given.
- 1954 Anna Stasswender, owner
Widow, Anton Stasswender
Proprietor, A. Stasswendder Granite Works (Tony Stasswender, manager), marble and granite monumental works, concrete burial vaults, 1400 E. 4th Street. Also listed is Katherine Stasswender, no occupation given.
NOTE: Tony Stasswender lived at 1506 Waller Street.
- 1952 Anton and Annie Stasswender, owners
Proprietor, A. Stasswender Granite Works, marble and granite monumental works, concrete burial vaults (Tony Stasswender, manager), 1400 E. 4th Street.
- 1949 Anton and Anna Stasswender, owners
Proprietor, A. Stasswender Granite Works, marble and granite monumental works, concrete burial vaults (Tony Stasswender, manager), 1400 E. 4th Street. Also listed is Catherine Stasswender, no occupation given.
- 1947 Anton and Anna Stasswender, owners
Proprietor, Texas Concrete Vault Company and Stasswender Granite Works, marble and cut stone monumental works, concrete burial vaults, 1400 E. 4th Street.
- 1944-45 Anton and Annie Stasswender, owners
Proprietor, Texas Concrete Vault Company, monumental work, 1400 E. 4th Street.
Also listed are Anne A. Stasswender, a teacher in the public schools; and Katherine M. Stasswender, no occupation given.
- 1942 Anton and Anna Stasswender, owners
Proprietor, Texas Concrete Vault Company, monumental work, 1400 E. 4th Street.
Also listed are Anne A. Stasswender, a student at the University of Texas; Anton H. Stasswender, a draftsman; and Katherine Stasswender, no occupation given.
- 1940 Anton and Anna Stasswender, owners
Designer and manufacturer of granite and marble monuments, all kinds of stone work, 1400 E. 4th Street; show yard, 811 E. 16th Street.
Also listed are Anne A. Stasswender, a student at the University of Texas; Anton H. Stasswender, no occupation given; and Katherine Stasswender, the secretary to Anton Stasswender.

- 1937 Anton and Anna Stasswender, owners
Designer and manufacturer of granite and marble monuments, all kinds of stone work, 1400 E. 4th Street; show yard, 811 E. 16th Street.
Also listed are Anne A. Stasswender, a student at the University of Texas; Anton Stasswender, Jr., no occupation given; and Katherine Stasswender, no occupation given.
- 1935 Anton and Anna Stasswender, owners
Designer and manufacturer of granite and marble monuments, all kinds of stone work, 1400 E. 4th Street; show yard, 811 E. 16th Street.
Also listed are Anne A. Stasswender, a student at the University of Texas; Anton Stasswender, Jr., no occupation given; and Katherine Stasswender, no occupation given.
- 1932-33 Anton and Anna Stasswender, owners
Designer and manufacturer of granite and marble monuments, all kinds of stone work, 1400 E. 4th Street; show yard, 811 E. 16th Street.
Also listed is Katherine Stasswender, a stenographer for Anton Stasswender.
- 1930-31 Anton and Anna Stasswender, owners
Designer and manufacturer of granite and marble monuments, all kinds of stone work, 1400 E. 4th Street; show yard, 811 E. 16th Street.
Also listed is Katherine Stasswender, an assistant book-keeper for Jacob Schmidt & Company, dry goods, 143-45 E. 6th Street.
- 1929 Vacant
NOTE: Anton and Anna Stasswender are listed as living at 901 E. 16th Street, which is east of Waller Street; this house is on the west side of Waller Street. Stasswender is listed as a designer and manufacturer of granite and marble monuments, and did all kinds of stone work; his show yard was at 901 E. 16th Street. Katherine Stasswender is listed as residing in the household; her occupation is not listed.

STASSWENDER HISTORY

- 1927 Anton and Anna Stasswender are shown as renting the house at 901 E. 16th Street; his occupation was the same as listed in 1929 with the show yard for his work at 901 E. 16th Street.
- 1924 Anton and Anna Stasswender are shown as renting the house at 901 E. 16th Street with his show yard at the same location. Stasswender was a partner with John Schmidly of Stasswender and Schmidly, marble and granite works, 1400 E. 4th Street.
- 1922 Anton and Anna Stasswender are shown as renting the house at 901 E. 16th Street; he was a partner with John Schmidly in Stasswender and Schmidly at 1400 E. 4th Street.
- 1920 Anton and Anna Stasswender are shown as renting the house at 901 E. 16th Street; he listed monuments, tombstones and all kinds of architectural marble work, with his place of business at 1400 E. 4th Street; Schmidly is not listed as his partner.
- 1918 Anton and Anna Stasswender are shown as living at 1208 E. 12th Street. He listed his occupation as a granite cutter for Aubry L. Gooch, a granite and limestone contractor, 1400 E. 4th Street.

The 1940 U.S. Census shows Anton and Anna Stasswender as the owners of this house, which was worth \$7,000. Anton Stasswender was 54, had been born in Germany, and was the

proprietor of a monument works. Anna Stasswender was 51, had been born in Germany, and had no occupation listed. With them lived their daughter, Anne, 22; and their son, Anton H., (Tony), 21. Both children had been born in Texas. Tony was a salesman for the monument works.

The 1930 U.S. Census shows Anton and Anna Stasswender at 811 E. 16th Street; they owned the house. Anton Stasswender was a monument maker. Their daughter Katherine, then 20, is listed with them. She had been born in Germany.

807, 807½, and 809 E. 16th Street



807 E. 16th Street – ca. 1931



807½ E. 16th Street – ca. 1931



809 E. 16th Street – ca. 1934

OCCUPANCY HISTORIES

807, 807½, and 809 E. 16th Street

December, 2013

1992 807: Ida M. Williams, renter
 Retired
 807½: Vacant
 809: Kelly Kochert, renter
 No occupation listed

1985-86 807: Robert and Mary Amaya, renters
 Robert: Clerk, Safeway (several locations)
 Mary: Salesperson, Homer's (not listed in the directory)
 807½: No return
 809: Vacant

1981 807: M. Rios, renter
 No occupation listed
 NOTE: The directory indicates that M. Rios was a new resident at this
 address.
 807½: Betty Manor, renter
 No occupation listed
 809: Arturo G. Borrego, renter
 No occupation listed
 NOTE: The directory indicates that Arturo G. Borrego was a new resident
 at this address.

1977 807: No return
 807½: No return
 809: Margaret Wenkheimer, renter
 Widow, August, J. Wenkheimer
 Retired

1973 807: Theron P. Park, owner
 Retired
 807½: Vacant
 809: Margaret Wenkheimer, owner
 Widow, August J. Wenkheimer
 Retired

1968 807: Theron P. and Alice Park, renters
 Retired
 Also listed is Theron P. Park, a tabulating operator for Texas Casualty
 Insurance Company, 306 E. 10th Street.
 807½: Charles and Winifred Arbuckle, renters
 Laborer, Dr. Pepper Bottling Plant, 9600 McNeil Road.
 809: Margaret Wenkheimer, owner
 Widow, August J. Wenkheimer
 Retired

1962 807: Theron P. and Alice Park, renters
 No occupation listed
 807½: John W. and Zomoria Morgan, retners
 Driver, City Parks Department
 809: Margaret Wenkheimer, renter
 Widow, August J. Wenkheimer
 No occupation listed

- 1959 807: Theron P. Park, renter
 No occupation listed
 NOTE: Alice Park is not listed in the directory.
 807½: Rudolph and Hulda Johnson, renters
 Carpenter
 809: Margaret Wenkheimer, renter
 Widow, August J. Wenkheimer
 No occupation listed
- 1955 807: Theron P. and Alice Park, renters
 No occupation listed
 807½: Bertha R. Rolf, renter
 No occupation listed
 809: Margaret Wenkheimer, renter
 No occupation listed
 Also listed is Hadwig Wenkheimer, employed by Western Union,
 120 E. 7th Street.
- 1952 807: Bertha M. Reed, renter
 Widow, Robert Reed
 No occupation listed
 NOTE: Theron P. and Alice Park are not listed in the directory.
 807½: Bertha K. Rolf, renter
 No occupation listed
 809: Carl and Freda Calhoun, renters
 Carl: Clerk
 Freda: Office secretary, Howard B. Granberry, surgeon, 906 W.
 6th Street.
 NOTE: Margaret Wenkheimer is listed at 507 West Avenue; she had no
 occupation listed.
- 1949 807: Kenneth C. and Corine Guinn, renters
 Kenneth: U.S. Air Force
 Corine: Anesthetist, Brackenridge Hospital
 807½: Bertha K. Rolf, renter
 No occupation listed
 809: Bailey B. and Frances Compton, renters
 Clerk, Sterzing & Miles Hardware, 505 E. 6th Street.
- 1947 807: Charles C. Flesher, renter
 No occupation listed
 Frances White, renter
 Book-keeper
 807½: Bertha K. Rolf, renter
 No occupation listed
 809: Bailey B. and Frances Compton, renters
 Clerk, Sterzing & Miles Hardware, 505-07 E. 6th Street.
- 1944-45 807: Charles C. Flesher, renter
 No occupation listed
 Frances White, renter
 No occupation listed
 807½: Bertha K. Rolf, renter
 No occupation listed
 809: Bailey B. and Frances Compton, renters
 Bailey: U.S. Army

- Frances: Nurse, Dr. Benjamin R. Eppright, physician, 608-09 Capital National Bank Building, 114 W. 7th Street.
- 1941 807: Nils A. and Adele Blomquist, renters
 Nils: Salesman, Hicks Rubber Company, tires and tubes, batteries, Humble gas and oil, 325-27 Congress Avenue.
 Adele: Stenographer, Austin Baking Company, 300-06 Fannin Street.
 NOTE: Dr. Claude H. and Edith Miears are listed at 4801 Shoalwood Avenue; he was a physician with his practice limited to the eye, ear, nose, and throat.
 807½: Lonnie A. and Georgia M. Farris, renters
 Barber, 110 E. 6th Street.
 NOTE: Bertha K. Rolf is listed at 1955 Red River Street; she had no occupation listed.
 809: Bailey B. and Frances Compton, renters
 Bailey: Cleaner, George Wesley Cleaners, clothes cleaners, dyers, and hatters, 606-08 Guadalupe Street.
 Frances: Nurse, Dr. Benjamin R. Eppright, physician, 608-09 Norwood Building, 114 W. 7th Street.
- 1939 807: Claude H. and Edith Miears, renters
 Physician, 820 Scarbrough Building
 807½: Lonnie A. and Georgia M. Farris, renters
 Lonnie: Barber, 106 E. 6th Street
 Georgia: Private secretary, State Board of Insurance Commissioners.
 809: Bailey B. and Frances Compton, renters
 Bailey: Cleaner, George Wesley, cleaner, dyer, and hatter, 913 Congress Avenue.
 Frances: Private secretary, State Board of Insurance Commissioners.
- 1937 807: Dr. Claude H. and Edith Miears, renters
 Physician, 820 Scarbrough Building.
 807½: Vacant
 809: Bailey B. and Frances Compton, owners
 Bailey: Cleaner, George Wesley, cleaner, dyer, and hatter, 913 Congress Avenue.
 Frances: Nurse, Dr. Benjamin R. Eppright, physician, 608-09 Norwood Building, 114 W. 7th Street.
- 1935 807: Dr. Claude R. and Edith Miears, renters
 Physician, 403 Scarbrough Building
 807½: Mattie E. Cooper, renter
 No occupation listed
 809: Cecil V. and Katie Pollard, renters
 Instructor, University of Texas
 NOTE: Bailey B. and Frances Compton are listed at 410 E. 19th Street; he was a presser for Kelly Smith Cleaners.
- 1932-33 807: Dr. Claude H. and Edith R. Miears, renters
 Physician, 403 Scarbrough Building
 807½: Dell and Corine Martin, renters
 No occupation listed
 809: The address is not listed in the directory.

1930-31 None of the addresses are listed in the directory.
NOTE: Dr. Claude H. and Edith Miears are listed at 2907 West Avenue; he was a physician with offices in the 403 Scarbrough Building.

BIOGRAPHICAL NOTES:

807 E. 16th Street

Claude H. and Edith R. Miears (ca. 1932 – ca. 1940)

Claude H. and Edith Miears appear in the 1940 U.S. Census as the owners of the house at 4801 Shoalwood Avenue. Claude H. Miears was then 42, had been born in Texas, and was a medical doctor in private practice. Edith Miears was then 32, had been born in Texas, and had no occupation listed. They had two sons: Robert, 9, and William, 7. Both boys had been born in Texas. The 1930 U.S. Census shows Claude and Edith Miears as the renters of a duplex at 300½ E. 12th Street in Austin. The 1920 U.S. Census shows Claude H. Miears as the 24-year old single son of Margaret Miears in Lockhart, Texas. Neither Margaret nor Claude had an occupation listed.

Dr. Miears Collapses, Succumbs in Office

Dr. C. H. Miears, a practicing physician in Austin for more than 29 years, collapsed and died in his office about noon Wednesday after suffering a heart attack.

An eye, ear, nose and throat specialist, Dr. Miears, 64, maintained offices in the Scarbrough Building. He came here in January, 1930, after practicing in 1928 and 1929 in Corsicana.

Survivors include his widow, Mrs. Edith Miears; two sons, William R. Miears and Robert T. Miears; and two grandsons.

Services for the well-known doctor will be held Thursday at 4:30 p.m. at Cook Funeral Home, followed by burial in Memorial Park. The Rev. Archie Stevenson will officiate.

Pallbearers will be David Kaiser, J. Hubert Lee, Dr. Harvey Henry, Dr. J. Edward Johnson, H. S. Nichols, and Tommie Bourchard. Honorary pallbearers will be members of the Travis County Medical Society.

Dr. Miears had been on the

staffs of all local hospitals in the past, and he gave much time to the charity eye clinic and ear, nose and throat clinics at Brackenridge Hospital. He was scheduled to work at Brackenridge Wednesday afternoon.

He was a member of the Travis County Medical Society, Texas Medical Association, Texas Society of Ophthalmology and Otolaryngology and the American Academy of Ophthalmology and Otolaryngology. He also was a member of the American Legion.

Dr. Miears was born in Caldwell County on Oct. 29, 1895, and attended the University of Oklahoma, getting his bachelor of science degree there. He was graduated from the Oklahoma School of Medicine in June, 1925, and licensed to practice in Texas the following year.

He interned at Baptist Hospital in Houston and at the New Orleans Eye, Ear, Nose and Throat Hospital and then went to Corsicana before coming to Austin.

Story on the death of Dr. Claude H. Miears
Austin American, August 6, 1959

1940 U.S. Census:

The 1940 U.S. Census shows Nora Lee Branch, a 48-year old Arkansas-born widow, as the renter of this house, for which she paid \$22 per month. Nora Lee Branch was a cook at the State School. She had lived in Fort Worth in 1935. With her lived three children: Joe Lee Grace, 16; Bobbie Grace, 13; and Bonnie Grace, 13. All three children had been born in Texas.

Charles C. Flesher and Frances White (ca. 1942 – ca. 1947)

Charles C. Flesher appears in the 1940 U.S. Census along with his daughters, Frances, 21, and Rachel, 20. Charles C. Flesher was then a 62-year old Missouri-born widower who worked as a

clerk for the WPA. Frances Flesher and Rachel Flesher had both been born in Oklahoma. Frances had no occupation listed; Rachel was a waitress in a café. Charles C. Flesher died in 1949.

Theron P. and Alice Park (ca. 1953 – ca. 1977)

Theron and Alice Park appear in the 1940 U.S. Census for Grape Creek, Tom Green County, Texas. Theron Park was then 32, had been born in Texas, and was a farm laborer. The census report indicates that he had lived in Austin in 1935. Alice Park was then 31, had been born in Texas, and had no occupation listed. They had four children: Freddie, 10, Melba, 8, Alta Mae, 3, and James Ray, an infant. The 1930 U.S. Census shows Theron and Alice Park in rural Travis County, where they lived on a rented farm. Theron Park is listed as a farmer; Alice had no occupation listed. Their son, F.L. is listed as an infant.

PARK, Theron P., 73, 11612 Angus Road, died Friday. Services 3 p.m. today at Cook-Walden Funeral Home. Burial, Walnut Creek Cemetery. Survivors: daughters, Melba Owen of Lake Travis, Alta Taylor of Jal, N.M.; sons, Freddy L. Park of Leander, David Park of

Lake Travis, James Park, Paschal Park, both of Austin; brothers, Leslie Park of Leander, L.G. Park, Bradford Park, Billy Park, Giles Park, all of Austin; sisters, Minnie Pope of Manchaca, Cecil Pruett of Leander, Maxine Blison of Austin; 14 grandchildren; 14 great-grandchildren.

Obituary of Theron P. Park
Austin American-Statesman, December 19, 1981

807½ E. 16th Street

Dell and Corinne Martin (ca. 1932 – ca. 1934)

Dell and Corinne Martin appear in the 1940 U.S. Census as the owners of the house at 904 Columbus Street in Austin. Dell Martin was then 36, had been born in Texas, and was the service manager for a filling station. Corinne Martin was then 34, had been born in Texas, and was a beautician in a beauty parlor. They had two sons: Kenneth, 14; and Dell, Jr., 9. Both boys had been born in Texas. The 1930 U.S. Census shows "Dale" and Corine Martin renting the house at 1205 W. 5th Street in Austin. Dell Martin was a helper at a filling station. Corine Martin had no occupation listed. With them lived Corinne's brother, William Hatherly, 21, who had been born in Texas and was a checker.

Lonnie A. and Georgia Farris (ca. 1937 – ca. 1943)

The 1940 U.S. Census shows Lonnie and Georgia Farris as the renters of this house, for which they paid \$20 per month. Lonnie Farris was then 34, had been born in Texas, and was a barber. Georgia Farris was then 32, had been born in California, and was a secretary for the State Board of Insurance. They had no children listed. The 1930 U.S. Census shows Lonnie Farris as a boarder in the boarding house operated by Louis Kreisle at 1609 Congress Avenue. Lonnie was listed as a barber.

FARRIS, Lonnie A., 75, of Buda, died Wednesday. Services 1:30 p.m. Saturday at Wilke-Clay Funeral Home. Burial, Wimberley Cemetery in Wimberley. Survivors: wife, Daphna Farris of Buda; daughters, Barbara Bluhm, Shirley Rogers, both of Austin; sisters, Mary Gibson, Leona Kilgore, both of Austin, Tiny Crawford of Houston; brothers, Riley Farris, Leon Farris, Andrew Farris, Odessa Farris, J.C. Farris, all of Wimberley, Henry Lewis Farris of Austin; four grandchildren.

Obituary of Lonnie A. Farris
Austin American-Statesman, October 23, 1981

Bertha K. Rolf (ca. 1943 – ca. 1958)

Bertha K. Rolf appears in the 1930 U.S. Census at 2005 Red River Street in Austin, where she lived with her brother, Robert. Robert Rolf owned the house and was a 55-year old widower. Bertha K. Rolf was then 47, and had been born in Texas to Swedish-born parents. Neither she nor Robert had an occupation listed in the census report.

MISS BERTHA K. ROLF
Funeral services for Miss Bertha K. Rolf will be held Thursday at 10 a.m. at the Cook Funeral Home with the Rev. M. L. Lundquist officiating.
Miss Rolf of 807½ East 16th Street died in a local hospital Wednesday morning. She was a lifelong resident of Austin and Travis County.
Survivors are two sisters, Mrs. August Olson and Mrs. Sarah Olson of Austin and a brother, Carl O. Rolf of Elgin and a number of nieces and nephews.
Burial will be in New Sweden Cemetery.

Funeral notice for Bertha K. Rolf
Austin American, May 29, 1958

809 E. 16th Street

Cecil V. and Kalei Pollard (ca. 1934 – ca. 1936)

Cecil V. and Kalei Pollard appear in the 1940 U.S. Census as the owners of the house at 607 Rathervue Place in Austin. Cecil Pollard was then 37, had been born in Idaho, and was an instructor at the State University. Kalei Pollard was then 31, had been born in Utah, and had no occupation listed. They had three children: Evelyn, 6; Cecil, 5; and Edward, 1. All three children had been born in Texas.

IN MEMORIAMCECIL VIVIAN POLLARD

Professor Pollard will be best remembered in the academic community for his contribution to the translation of scientific German, and for his remarkable success in giving in brief time hundreds of graduate students a command over scientific German adequate for their scholarly purposes. His book on the translation of German was published in numerous editions and is used by students in virtually all of the country's major graduate schools. Those students who studied with him respected him for the concentration he required of them and were grateful to him for providing them with a skill required for higher degrees by graduate schools but often not furnished by the traditional methods of language teaching. His approach to translation of scientific German brought him increasing recognition from teachers with similar aims elsewhere, from scholars who deplored the neglect of syntax in the teaching of languages, and from scientists interested in the workings of language translation.

Professor Pollard was born January 16, 1902, in Rexburg, Idaho. After attending the University of Utah in 1920-21 he went to Germany for three years, as a missionary for the Church of Jesus Christ of Latter Day Saints. He returned to the University of Utah in 1925, and completed his B.A. degree there in 1928. In the year 1929-30 he studied at the University of Poitiers, Tours, France, and was awarded a Diplome d'études francaises. In the summer of 1930 he studied at the University of Berlin. He continued his graduate studies at the University of Texas in 1930, completing his work for a Master of Arts degree in 1932 with a major in Germanic Languages and a minor in French.

Apart from teaching in Weber High School in 1928-29, all of Professor Pollard's career was spent at the University of Texas. He was appointed part-time instructor in 1930, became a full-time instructor in 1931, assistant professor in 1941, and associate professor in 1945. Although in poor health for the past two years he continued to teach until shortly before his death on 4 May 1960. From 1945 to 1953 he was chairman of the Department of Germanic Languages. He also served on various University committees, and held memberships in the American Association of University Professors and the South Central Modern Language Association.

In October 1942 Professor Pollard was awarded an honorary Doctor of Law degree by Midwestern University, Wichita Falls, Texas. When he awarded the degree, Dr. James B. Boren, president of Midwestern, expressed his appreciation for having been "one of many students who have been tremendously benefited by the Pollard system of teaching languages."

The "Pollard system" and its development may be among the more interesting matters to recall from Professor Pollard's academic career. His essential training was independent of the main tradition of German teaching, which at the time was concentrated on the study of forms. It was believed that if one could conjugate a verb, especially an irregular one, through several voices, moods, and six tenses that a language was mastered. Professor Pollard learned the futility of this method through his personal experience in Germany and through teaching numerous graduate students who had completed the required courses in the traditional method but still could not translate technical German. Noting that the essential differences between German and English lay in syntax, he formulated eleven basic rules to resolve the differences, while virtually disregarding the forms. His recognition of the importance of syntax, plus his forceful control as a teacher, led to the success of his students.

Professor Pollard's book was first published in 1936, under the title Pollard's Simplified German System. This underwent considerable expansion in the 1945 version entitled German -- The Easy Way. The second edition, published in 1947 under the name The Key to Rapid Translation of German was maintained with little change to the sixth edition called The Key to German Translation, published in 1959. In the November 1953 issue of the German Quarterly he published an article entitled "The Weak Verb -- How to Recognize It in the Infinitive," in which he aimed to simplify dictionary problems for students of German.

Although his teaching and the method he developed were his prime interests, Professor Pollard also took part in community matters, especially in the Church of Jesus Christ of the Latter Day Saints and the sports activities of the University. He is survived by his widow, by two sons and two daughters. His work is an example of the contribution which singleness of purpose and a fresh approach may make.

W. P. Lehmann, Chairman
B. H. Amstead
A. M. Cory

Bailey B. and Frances Compton (ca. 1936 – ca. 1950)

Bailey and Frances Compton are shown as the renters of this house in the 1940 U.S. Census; they paid \$20 per month in rent. Bailey Compton was then 33, had been born in Texas, and was a clothes cleaner and dyer. Frances Compton was then 27, had been born in Louisiana, and was a nurse in a doctor's office. They had no children listed. The 1930 U.S. Census shows Bailey B. Compton as the 23-year old unmarried son of J. Frank and Mary J. Compton, who rented the house at 410 E. 19th Street in Austin. Bailey was a tailor; his father was a custodian at the University of Texas library. Bailey Compton died in 1998 in Lafayette, Louisiana; he was buried in the U.S. Veterans' Cemetery at Maxie, Louisiana.

Margaret Wenkheimer (ca. 1953 – ca. 1979)

Margaret Wenkheimer was born in 1882 in Berlin, Germany. She appears in the 1930 U.S. Census for Pawnee County, Kansas, where she is listed as a 45-year old German-born widow. She was the manager of a farm there. With her lived her five daughters, her parents, and two male lodgers who worked on the farm. None of the Wenkheimer family (except for Margaret) had an occupation listed.

WENKHEIMER, Mrs. Margaret,
97, 809 E. 16th St., died Tuesday.
Graveside services 2 p.m. today at
Oakwood Cemetery. Survivors:
daughters, Gertrude Morgan of
Austin, Mrs. Paul Sward of Corpus
Christi; two grandsons. (Weed-Cor-
ley)

Obituary of Margaret Wenkheimer
Austin American-Statesman, February 8, 1979

Unless the Plumbing is done in strict accordance with City Ordinances, do not turn on the water.

PERMIT FOR WATER SERVICE

AUSTIN, TEXAS

No. 280
DEC 41

M. Anton Stasswender Address 809 1/2 E. 16th
Plumber H. & Lincomb Size of Tap 1/2" Date 4-28-31

Foreman's Report	
Date of Connection.....	5/3/31
Size of Tap Made.....	1/2"
Size Service Made.....	1/2"
Size Main Tapped.....	6"
From Front Prop. Line to Curb Cock.....	2'4"
From = Prop. Line to Curb Cock.....	N 31'8"
Location of Meter.....	at curb
Type of Box.....	wood
Depth of Main in St.....	4'
Depth of Service Line.....	2'6"
From Curb Cock to Tap on Main.....	19'
Checked by Engr. Dept. <u>6-2-31 JCA</u>	

No. Fittings	Size	Material
1 Curb Cock	1/2"	cast iron
1 Elbow	1/2"	cast iron
1 St. Elbow	1/2"	cast iron
1 Bushing	1/2"	cast iron
1 Reducer	1/2" x 1/4"	cast iron
1 Pipe	1/2"	cast iron
1 Plug	1/2"	cast iron
1 Union	1/2"	cast iron
1 Tee	1/2"	cast iron
1 Stop	1/2"	cast iron
1 Box	1/2"	cast iron
1 Valve	1/2"	cast iron
1 Reg. No.	8771	

Foreman's Signature Burman

INDEXED

Water service permit to Anton Stasswender (the owner of the house at 811 E. 16th Street) for the house at 809 E. 16th Street (1931)

1506 Waller Street
ca. 1934



OCCUPANCY HISTORY 1506 Waller Street

City Directory Research, Austin History Center
By City Historic Preservation Office
September, 2007

2000	Insight Painting Painting and paperhanging Carolyn S. Woolfork, proprietor
1987	Gregory and Florinda Perez, renters No occupation listed
1981	George Florience, renter No occupation listed NOTE: The directory indicates that George Florience was a new resident at this address.
1975	Chanucey F. and Margie M. Winsier, renters Retired
1969	Chauncey F. and Margie M. Winsier, renters Retired Also listed are Marlene Winsier, a student, and Maxine Winsier, no occupation given.
1963	Chauncey F. and Margie M. Winsier, renters Carpenter Tony and Blanche Stasswender are listed as living at 1505 Bellaire Drive; he listed his occupation as the manager of Stasswender Marble and Granite Works, 1400 E. 4 th Street.
1957	Tony H. and Blanche Stasswender, owners Manager, Stasswender Marble and Granite Works, 1400 E. 4 th Street.
1954	Tony H. and Blanche Stasswender, owners Manager, Stasswender Granite Works, 1400 E. 4 th Street.
1952	Tony H. and Blanche Stasswender, owners Manager, Stasswender Granite Works, 1400 E. 4 th Street.
1949	Tony H. and Blanche Stasswender, owners Manager, Stasswender Granite Works, 1400 E. 4 th Street.
1947	Tony H. and Blanche Stasswender, owners Manager, Stasswender Granite Works, 1400 E. 4 th Street.
1944-45	Laurence and Alma Lou Anderson, renters No occupation listed NOTE: Tony H. and Blanche Stasswender are not listed in the directory.
1942	Sidney L. and Maude Curlee, renters Driver, Davidson Sash & Door Company, 817 E. 5 th Street.

- 1940 Margarita Flores, renter
No occupation listed
- 1937 Reinhold M. and Marie Borth, renters
Truck driver
Also listed are Fred R. Borth, a student at the University of Texas, and Gustav M. and Rosa Borth; he was a truck driver.
- 1935 W.J. and Eunice Shaw, Jr., renters
Proprietor (with W.J. Shaw, Sr.), W.J. Shaw Furniture Company, household furniture, stoves, rugs, furniture repairing and refinishing, 212 E. 6th Street.
- 1932-33 The address is not listed in the directory.
NOTE: W.J. and Eunice Shaw, Jr. are listed at 1218 Riverside Drive. He was a partner with W.J. Shaw, Sr. in W.J. Shaw Furniture Company, 212 E. 6th Street.

The 1940 U.S. Census shows Anton H. Stasswender (Tony) living in his parents' home at 811 E. 16th Street. He was 21 years old and worked as a salesman for his father's monument works.