

City of Austin Urban Trails Update

March 2015



Agenda

- Urban Trails Program
- Urban Trails Master Plan requirements
- Updates (projects at 30% design or greater):
 1. Violet Crown Trail
 2. Country Club Creek Trail
 3. Boggy Creek Trail
 4. Austin to Manor Trail: Phase 2 – **Seeking recommendation from Board to approve Transportation Alternatives Program (FHWA) grant application.**



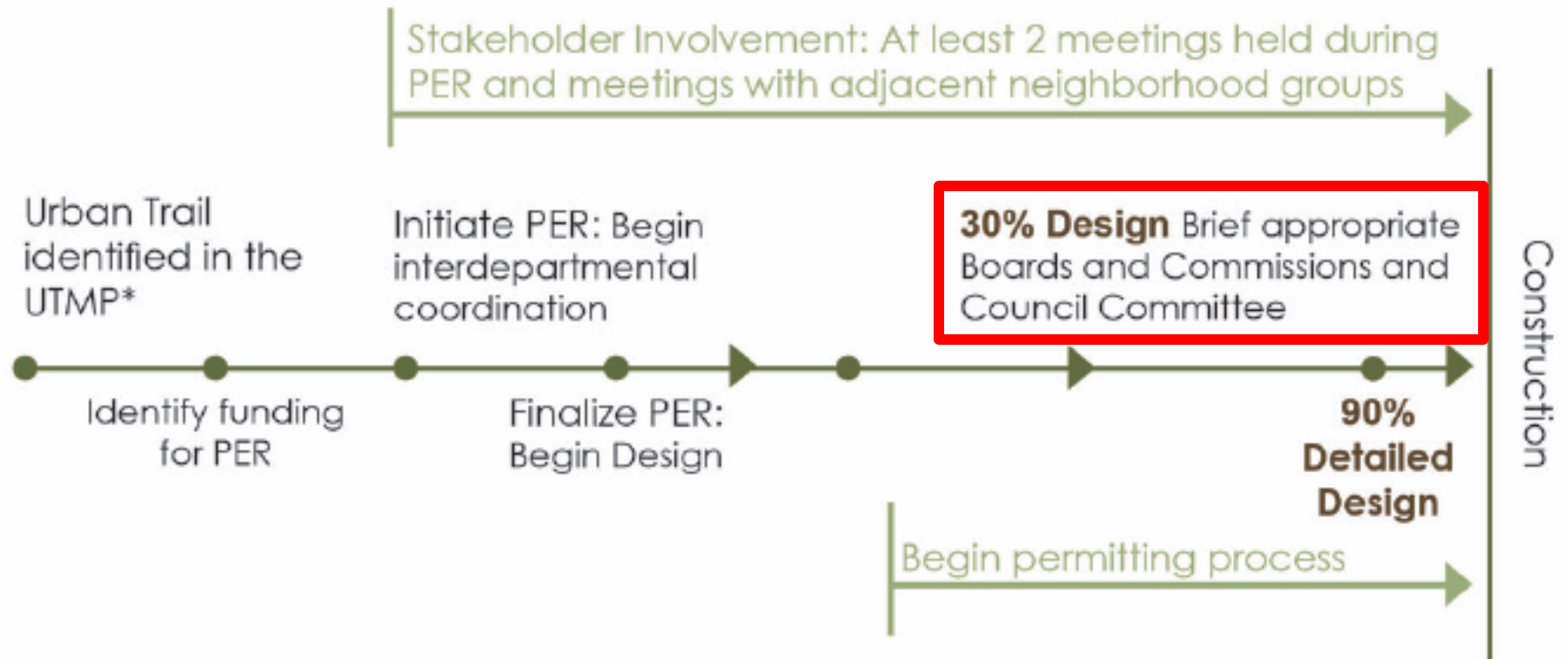
Urban Trails: A citywide network of non-motorized, multi-use pathways that are used by bicyclists, walkers and runners for both transportation and recreation purposes.

Urban Trails:

1. For transportation & recreation use,
2. Link to bicycle & sidewalk network,
3. Wide enough to accommodate all users,
4. Include amenities & unique features,
5. Maintain & operate for safety and comfort,
6. Context-sensitive, environmentally sustainable,
7. Preserve & improve wildlife habitat.



Urban Trail Implementation Plan Diagram

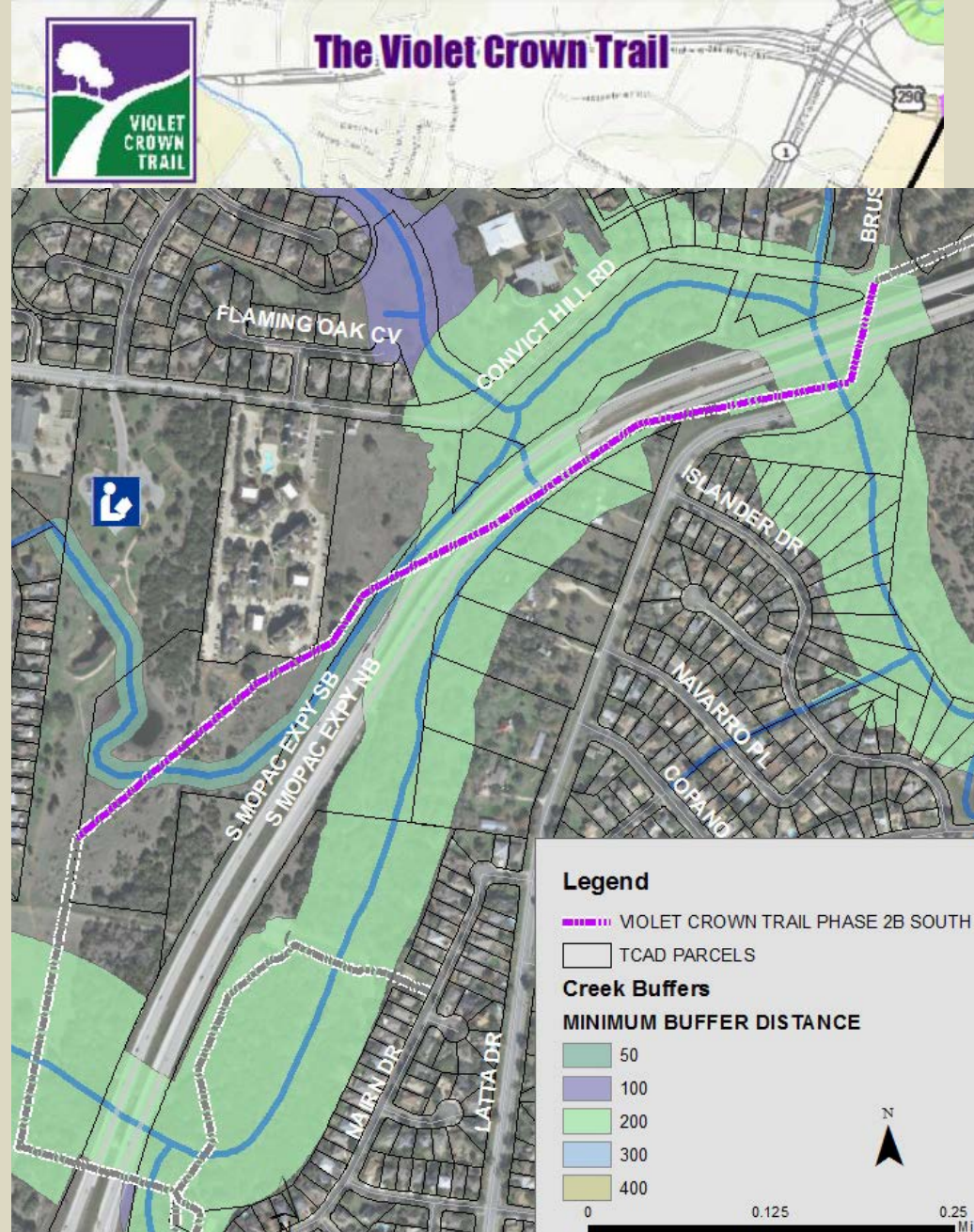


*Tier II Urban Trails were identified during the UTMP or previous planning processes. Development of Tier II Urban Trails will occur upon adjacent development, planning, or land use changes. All Urban Trails identified in the UTMP are conceptual in nature. Specific routing for Urban Trails is determined during the PER and design phases.



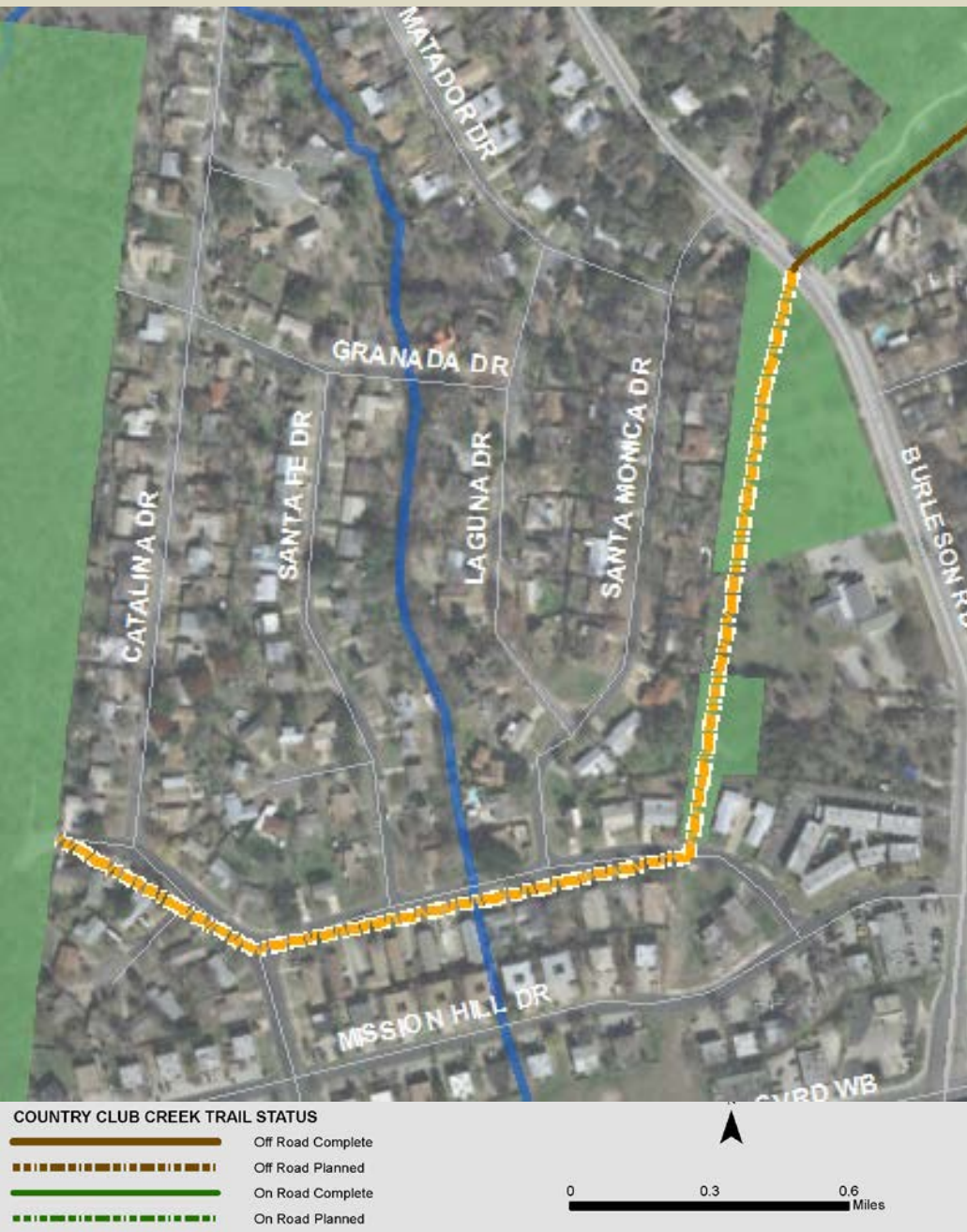


- Public-Private-Partnership with Hill Country Conservancy
- Convict Hill to Hampton Library.
 - 1 low-water crossing
 - Construction slated to begin Sept. 2015, completed summer 2016.
 - Cost: \$844,000 provided by 2012 Bond funds
- Staff completing PER for section from Home Depot Boulevard - Arbor Trails Development.
- Other sections constructed by Parks Department and HCC.



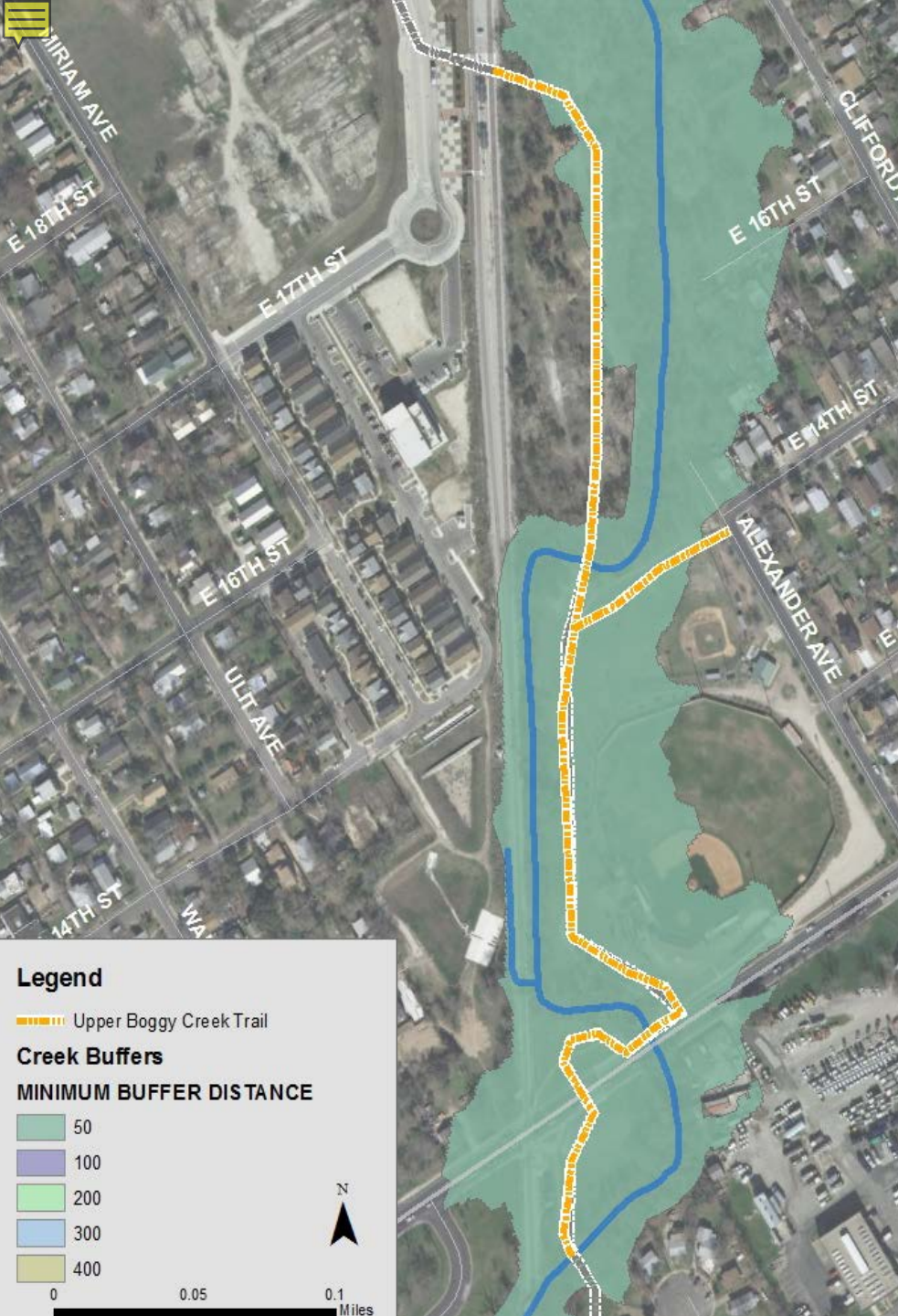
Country Club Creek Trail

- 2 PER stakeholder meetings held winter 2014-2015
- Stakeholders preference to begin design and construction of section 1: Mabel Davis Park to Burleson Road.
- Design complete May 2015.
- Construction to begin Fall 2015 and open Spring 2016.
- Design + construction cost = \$500,000 (available from 2012 Bond funds).
- Subsequent sections funded by parkland dedication, bond, and grant funds.



Upper Boggy Creek Trail

- Connect Rosewood and surrounding neighborhoods to:
 - MLK Station, Sustainable Food Center Community Gardens, Farmer's Market, and more
- 1 new creek crossing.
- Meredith Family donating easement for trail.
- 90% design
- Seeking funding (\$1.6m) for construction.



Austin to Manor Trail: Phase 2

- Lindell Lane to Ben E. Fisher Park (Gilleland Trail).
- Design complete by September 2016
- Seeking \$6m in Federal funds to construct.
 - Working with Travis County to find local match.
 - Using design and preliminary engineering work as in-kind match.
- If funded, construction complete by Spring 2018.

