

# BSEACD, the City of Austin, and Local Groundwater Issues

Presentation to the  
City of Austin Environmental Board

April 15, 2015

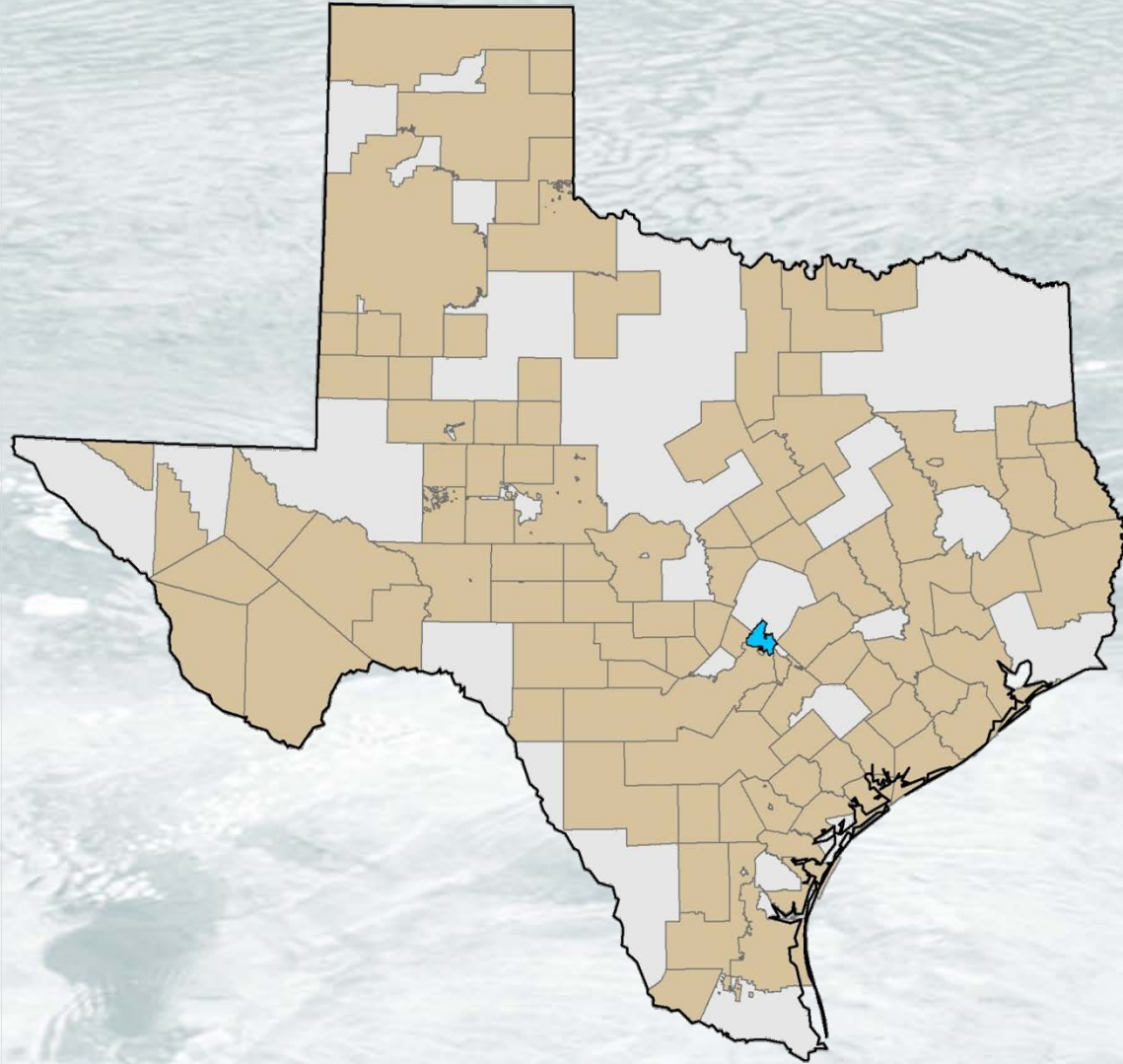
John T. Dupnik, P.G.  
*General Manager*



**BARTON SPRINGS  
EDWARDS AQUIFER  
CONSERVATION DISTRICT**

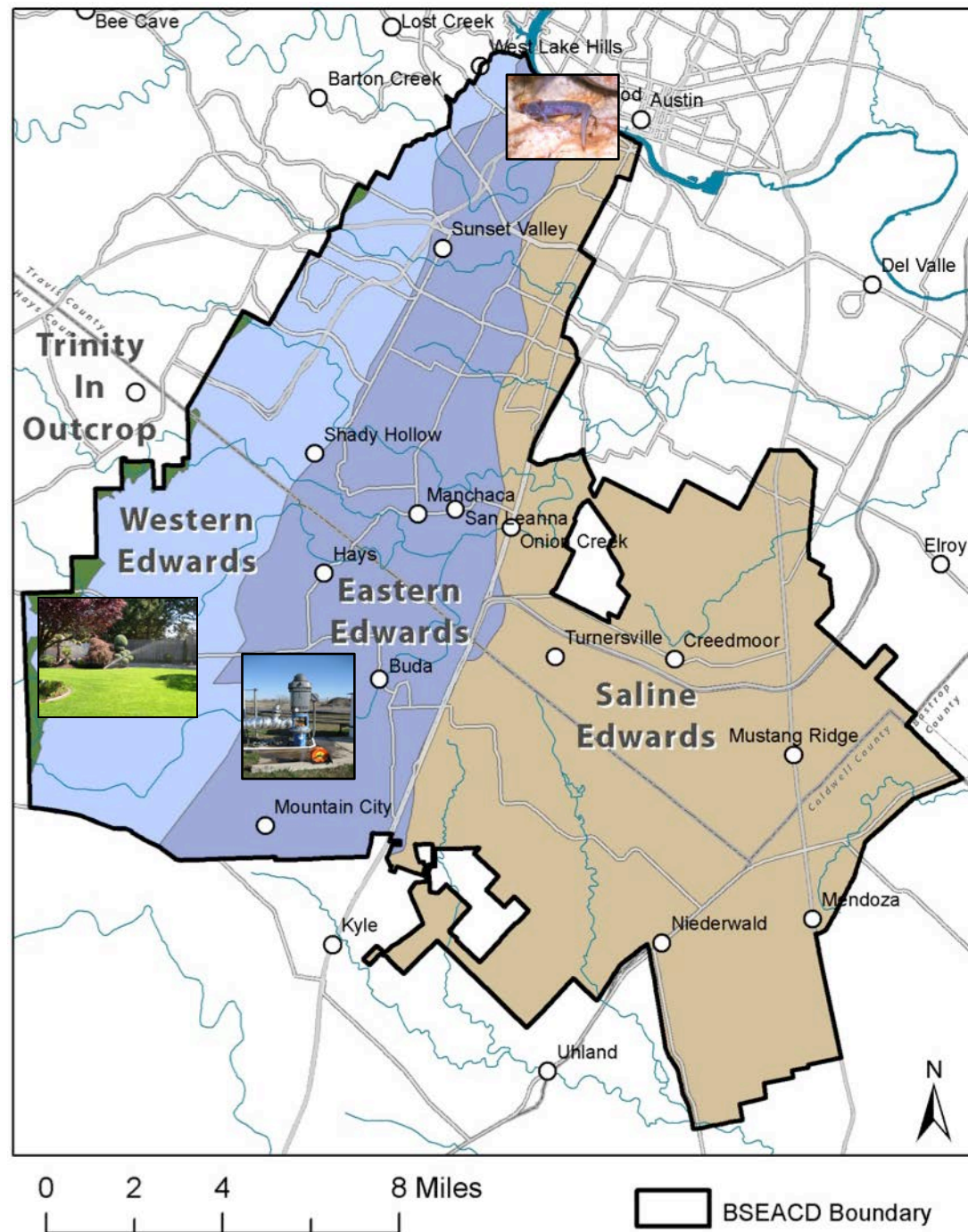
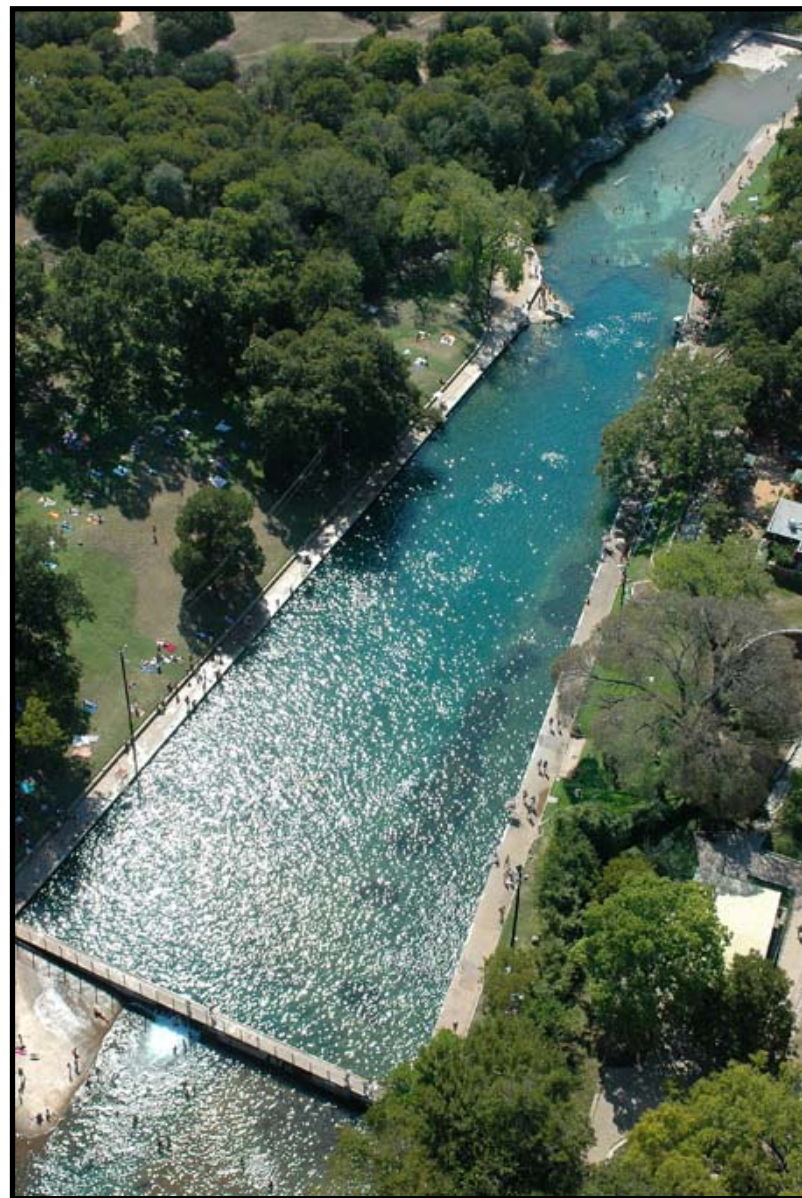
# Groundwater Conservation Districts

- Decentralized Management – Local Control
- Purpose: Preserve, conserve, and protect groundwater
- 100 created to date
- Preferred method of groundwater management
- Authority (Ch. 36)
  - Register Wells/Permit Pumping
  - Well Spacing/Construction
  - Aquifer Studies

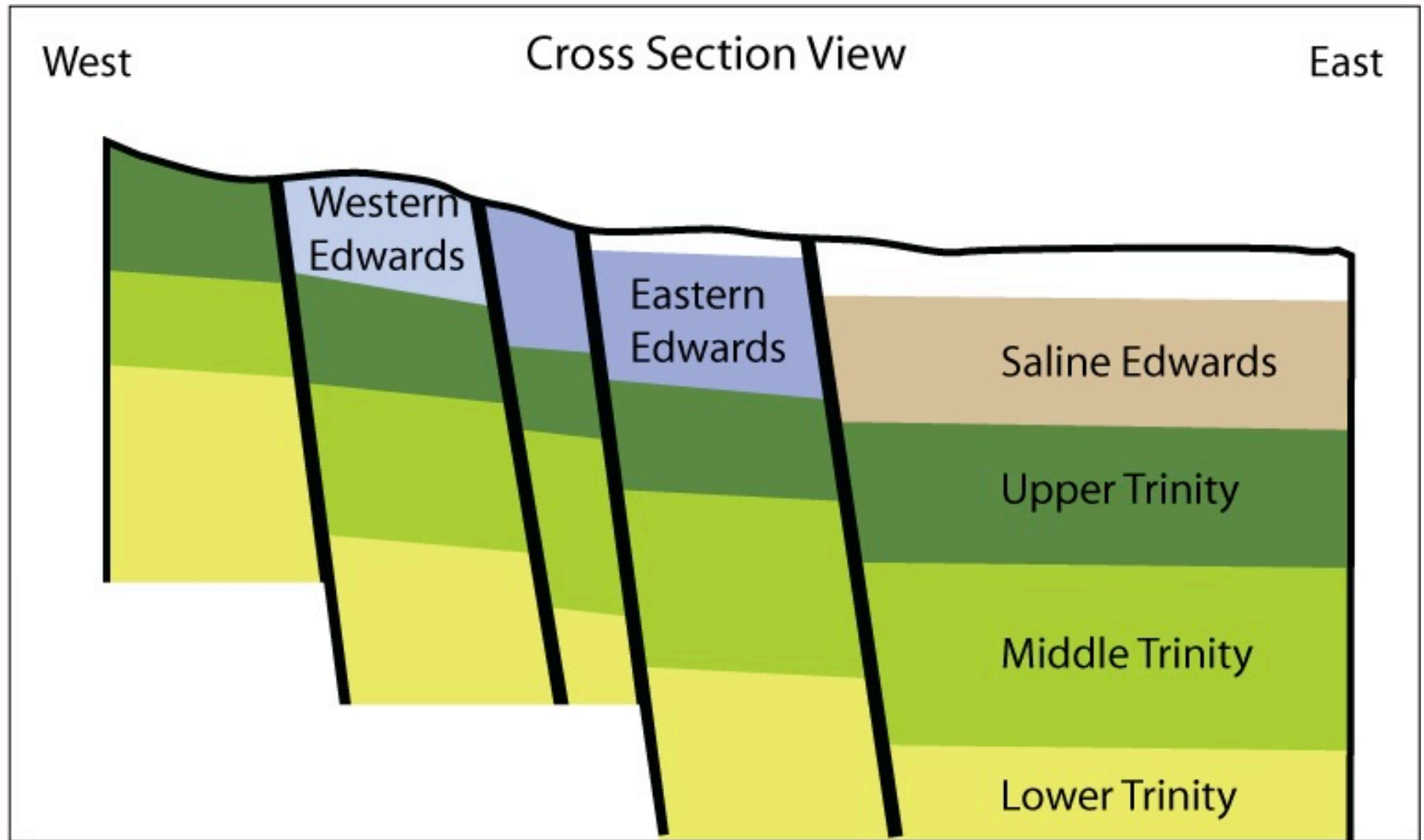




# The Barton Springs/Edwards Aquifer Conservation District



# BS/EACD Managed Aquifers



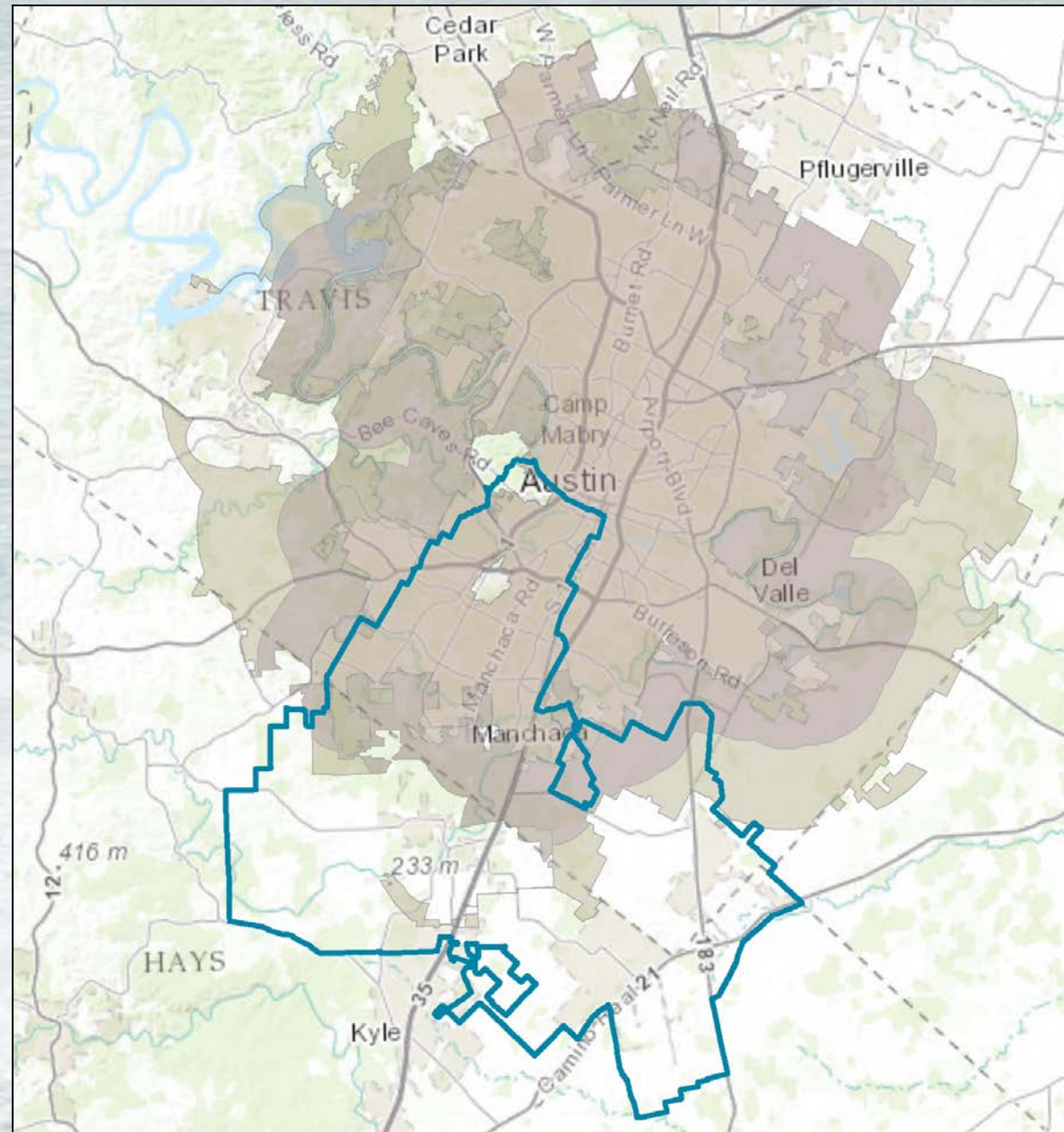
not to  
scale





# The BS/EACD and the City of Austin

- 💧 The Edwards Aquifer requires coordinated management
- 💧 Austin Authority = Water Quality
- 💧 BSEACD Authority = Water Quantity
- 💧 Symbiotic relationship



# Effective Partnership

## BS/EACD

- 💧 No authority to regulate land use
- 💧 Water Quantity: Limit pumping to preserve springflows
- 💧 HCP = to preserve springflow
- 💧 Groundwater drought response coordination
- 💧 Well construction standards/plug abandoned wells
- 💧 Limited funding
- 💧 Provide GW expertise on EB

## City of Austin

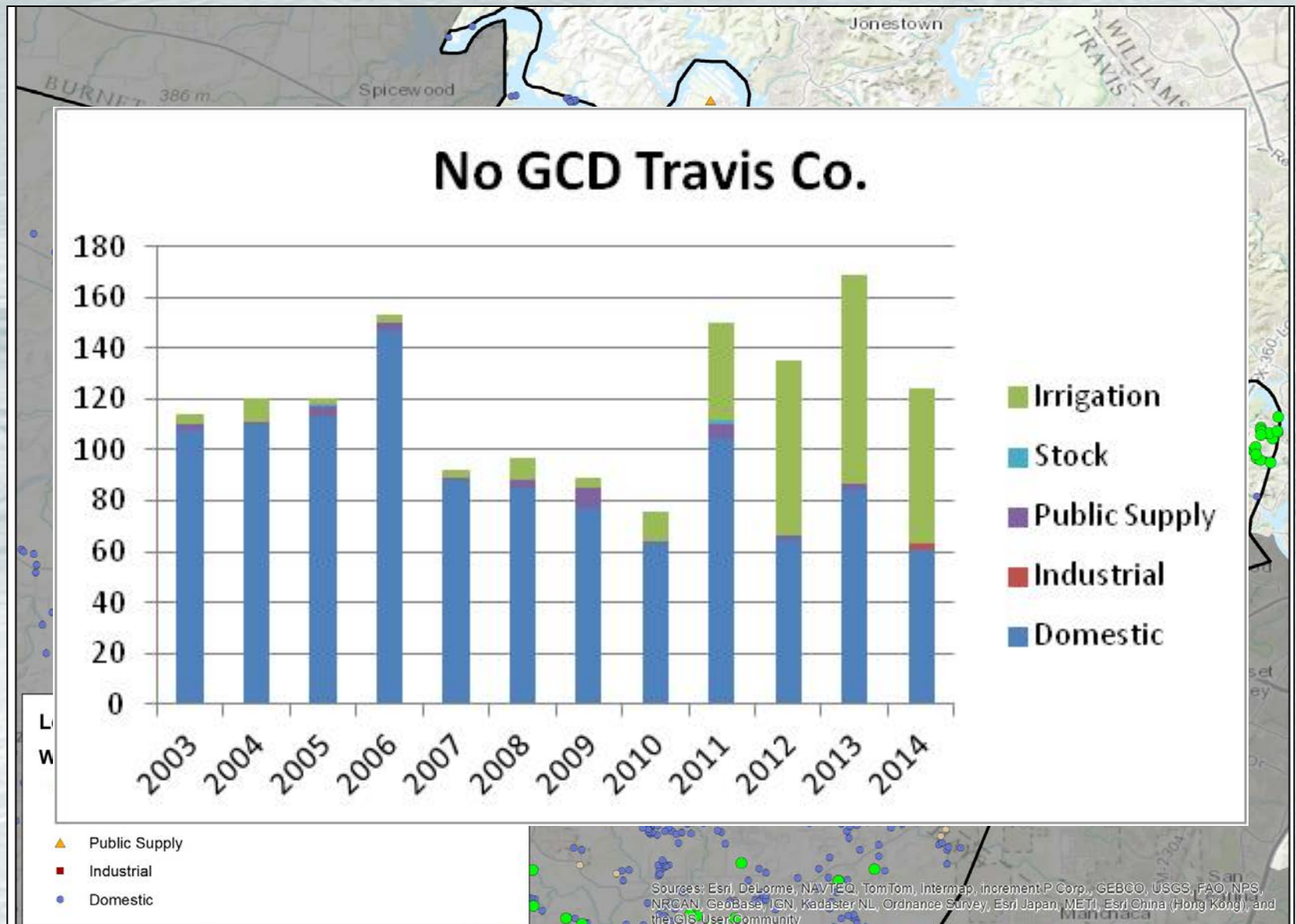
- 💧 No authority to regulate pumping
- 💧 Water Quality: Progressive land use regulations
- 💧 HCP = to preserve habitat
- 💧 Active land conservation programs (WQPL/BCCP)
- 💧 Water Well Ordinance, Oct. 2012
- 💧 Provide funding (60% of fees)
- 💧 Reserve seat on EB



The background of the slide is a photograph of water. It shows a close-up view of the water's surface, which is covered in fine, concentric ripples. In the lower center of the frame, a dark, cylindrical object, possibly a trash can or a piece of debris, is partially submerged, creating a small vortex and more pronounced ripples around it. The overall color of the water is a pale, slightly greenish-blue.

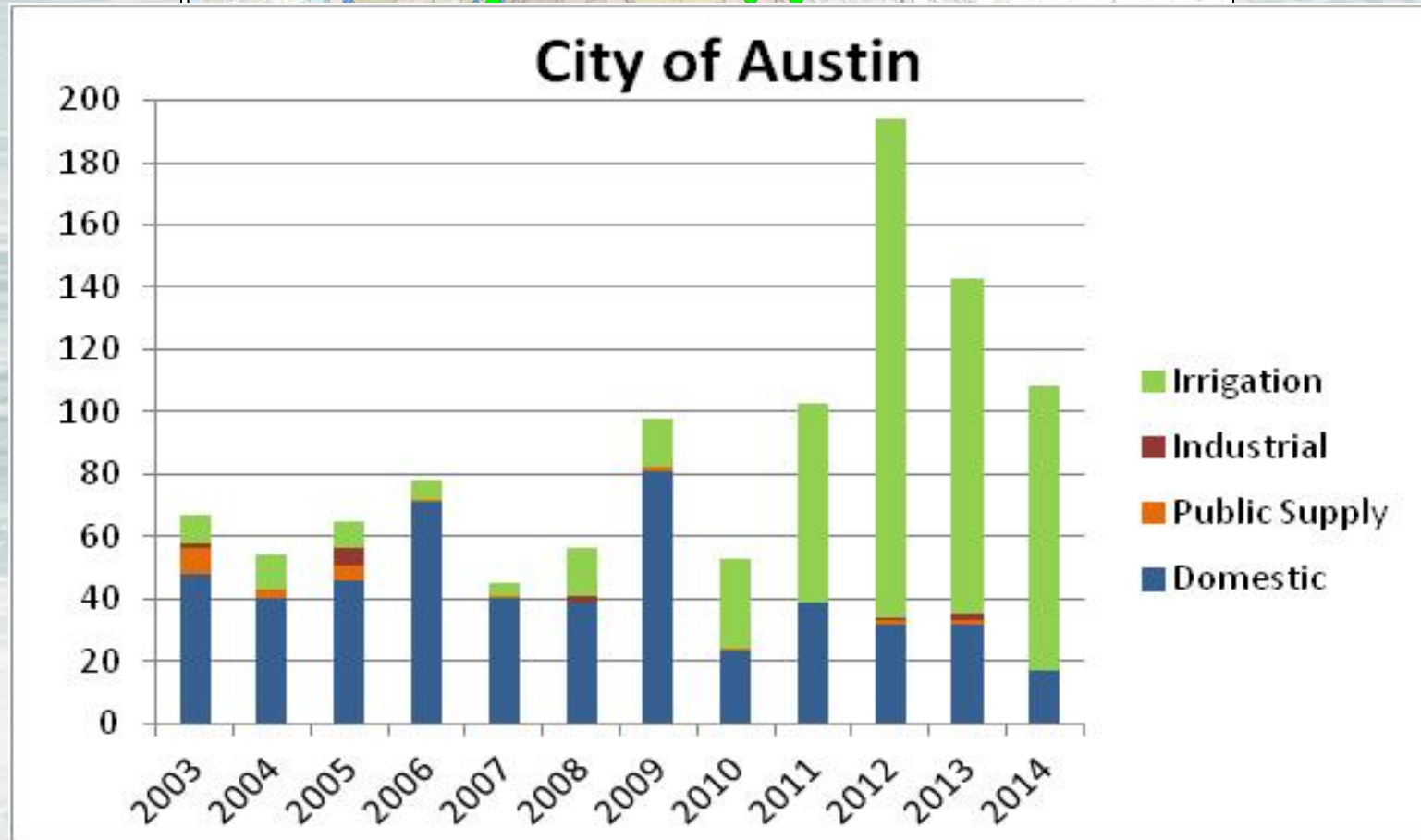
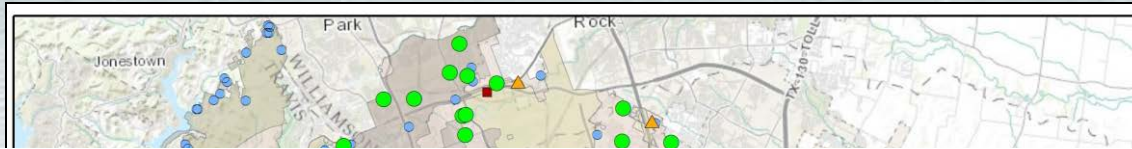
# **Regional Groundwater Issues**

# Well Drilling Activity – SW Travis County





# Well Drilling Activity - City of Austin



# Unregulated Trinity

Trinity Aquifer well field in Central Hays County

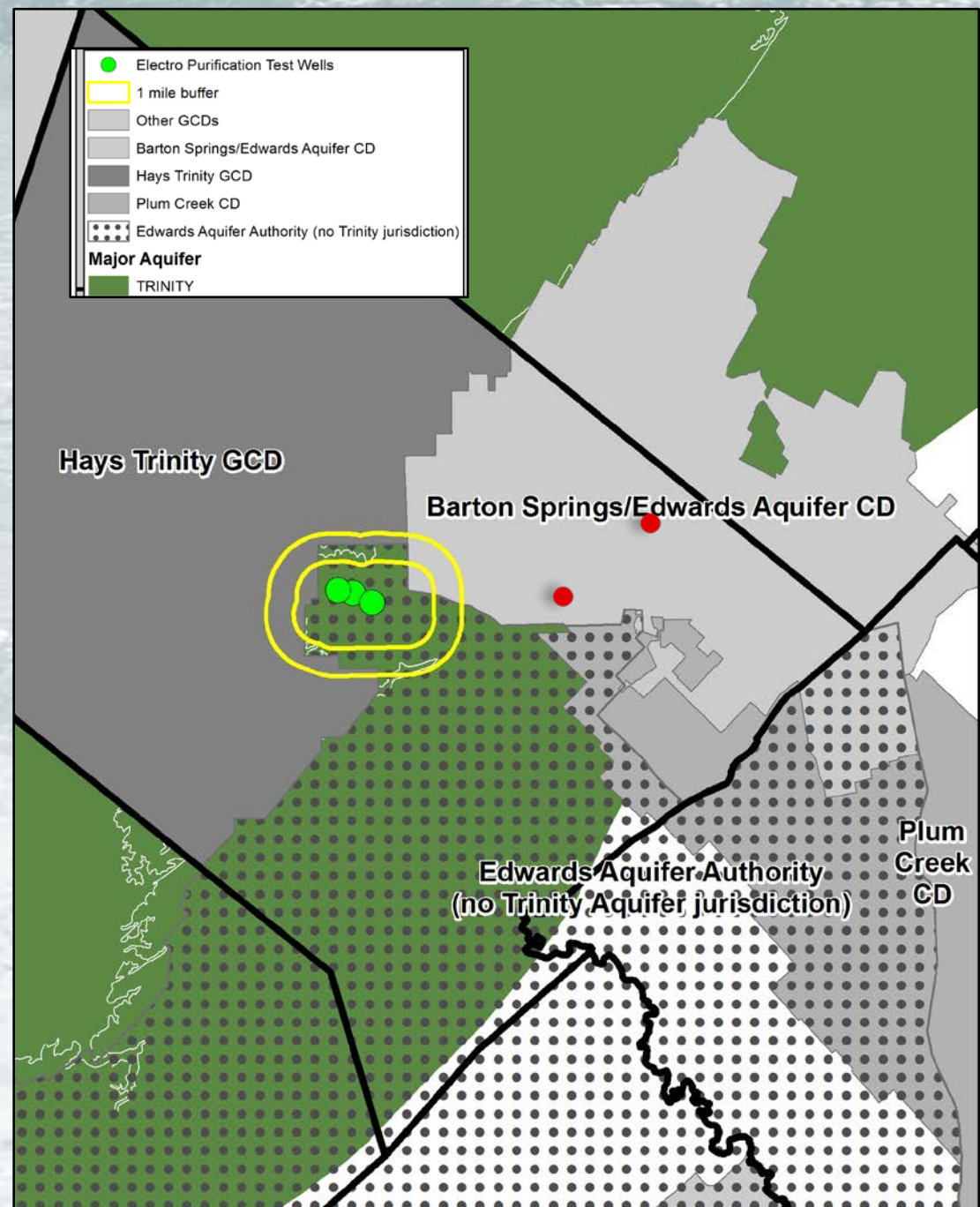
5.3 MGD of wholesale water contracts with communities ~10 miles to east

1. Goforth SUD (3.0 MGD)
2. Anthem (1.3 MGD)
3. City of Buda (1.0 MGD)

2x available “White Space” MAG

Surrounded by 3 GCDs

Very controversial





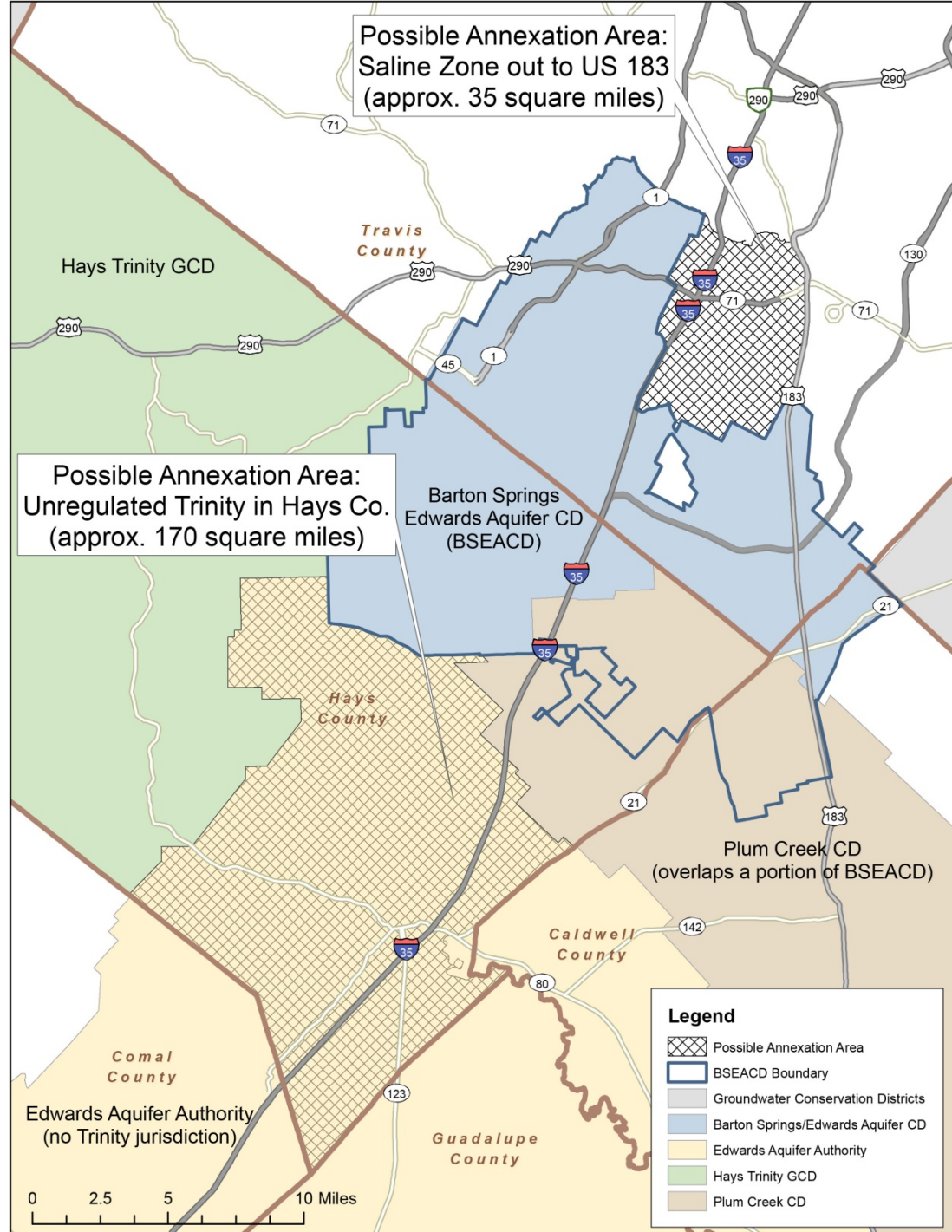
# Proposed Annexation

## HB 3405/SB1440:

- Annex unregulated Trinity
- Clarify authority over Trinity Aquifer
- Clarify shared territory authority

## Possible amendments:

- Expand Board (5 to 7)
- Annex saline Edwards buffer
- Cap Austin fees (60%)





**Thanks for  
Listening!**