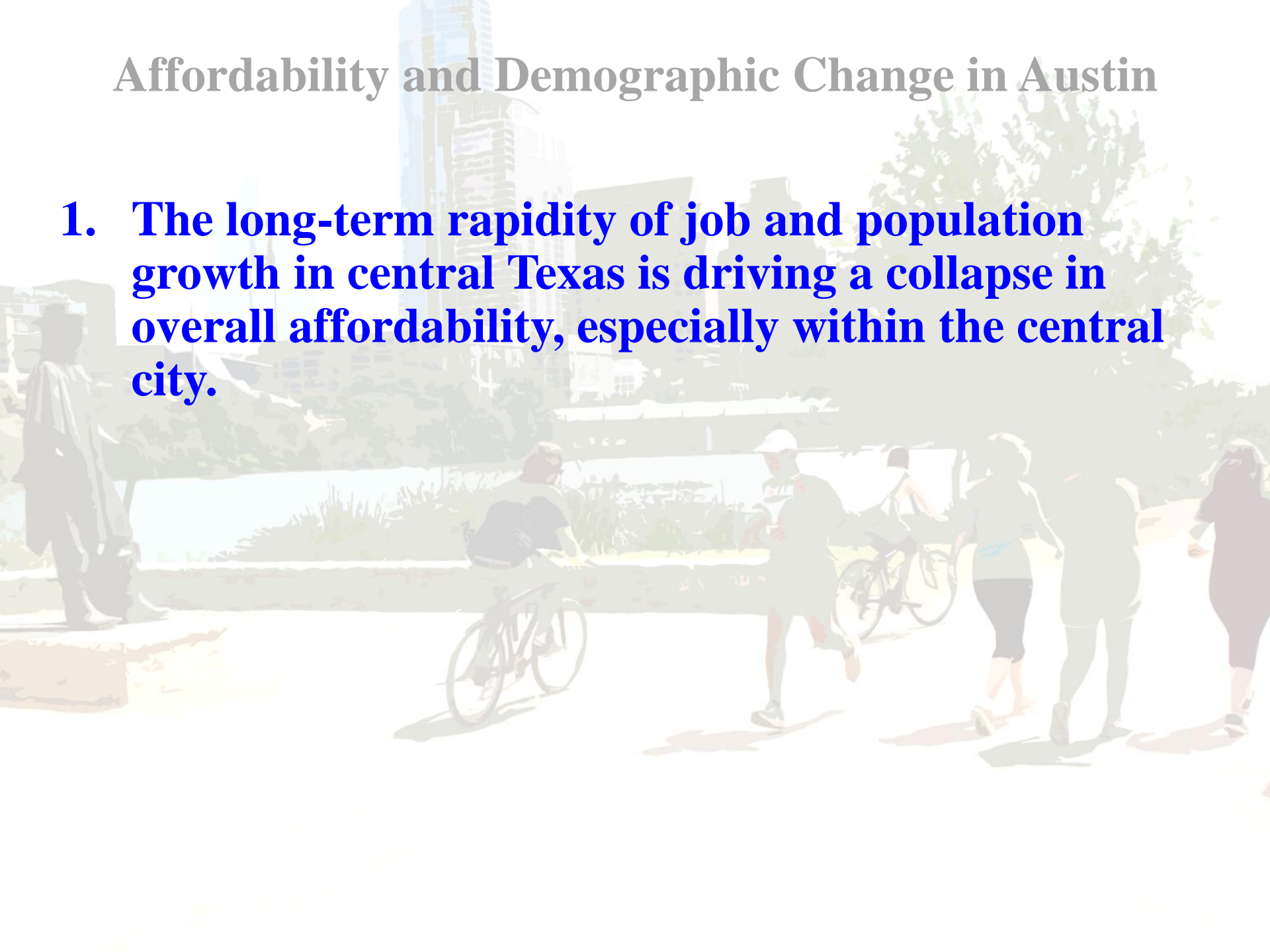


Takeaways

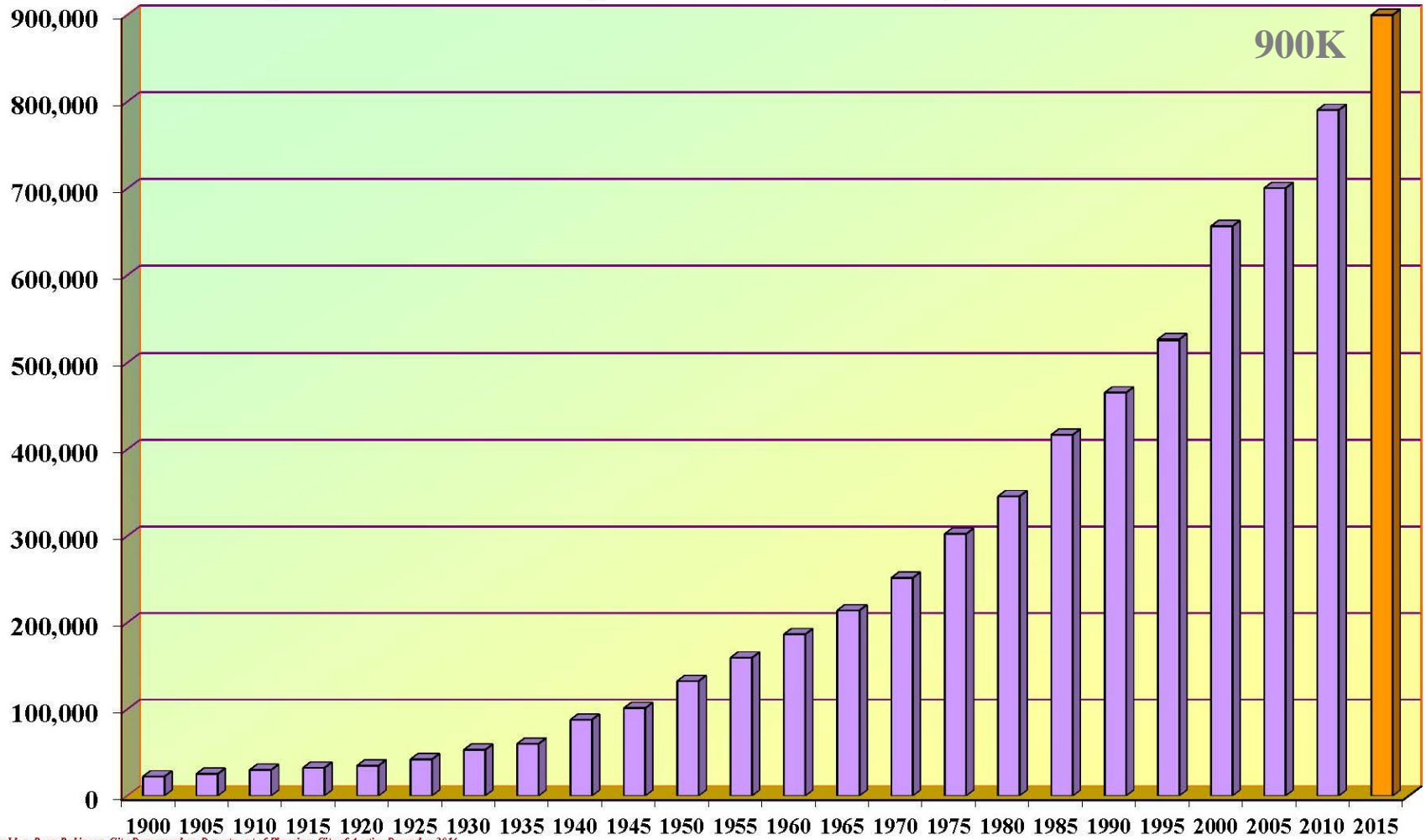
1. The long-term rapidity of job and population growth in central Texas is driving a collapse in overall affordability, especially within the central city.
2. Austin is still relatively affordable from a national perspective, but much less so than in the past.
3. Relatively stagnant wages coupled with steep increases in housing costs are the main forces driving our affordability collapse.
4. A strong dichotomy of affordability between the City and the remainder of the metro area is emerging. Austin is one of the most economically segregated metros in the country.
5. Changes in affordability are influencing demographic landscapes.

Affordability and Demographic Change in Austin

- 1. The long-term rapidity of job and population growth in central Texas is driving a collapse in overall affordability, especially within the central city.**

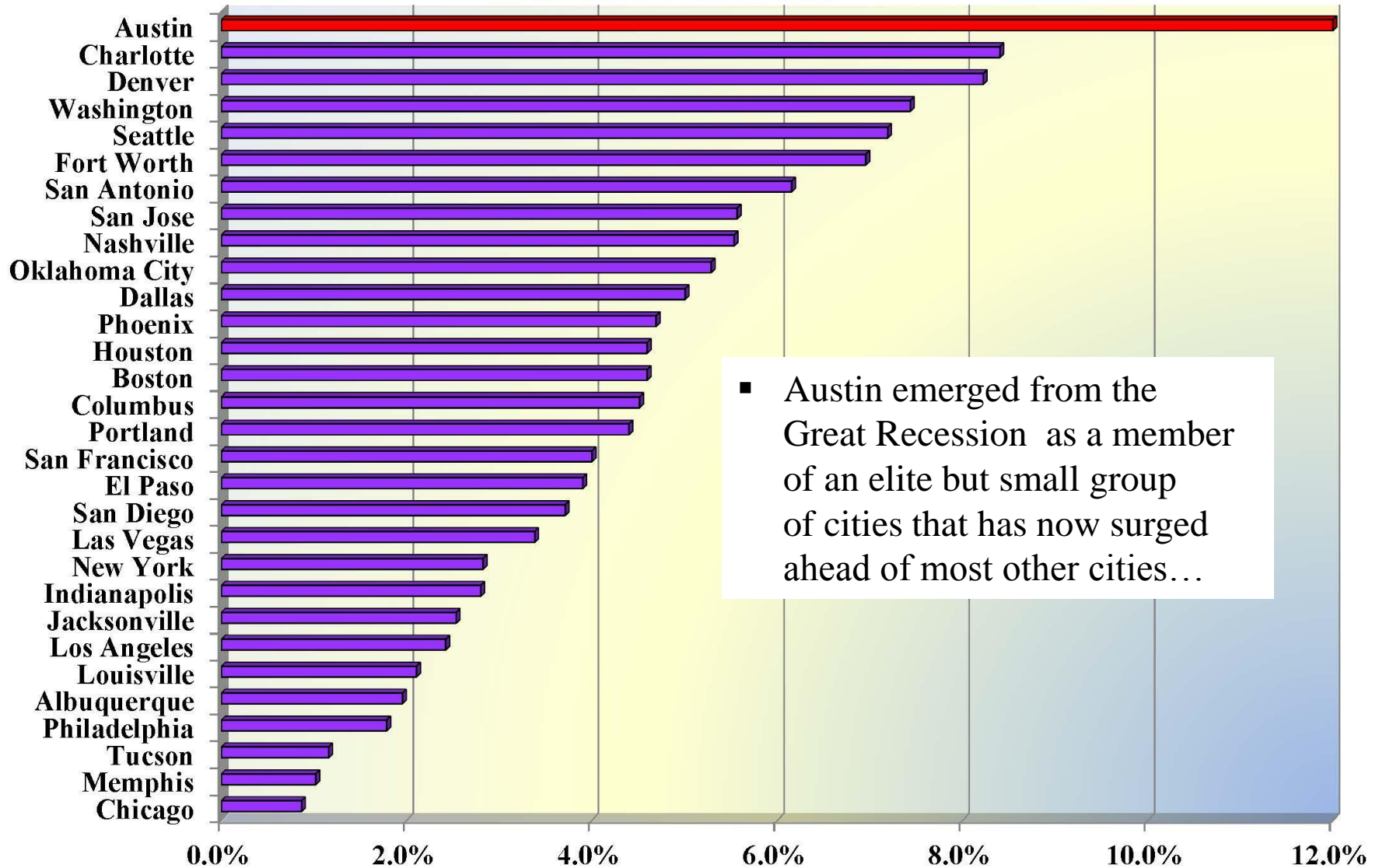


City of Austin Population History: 1900 to 2015



Produced by: Ryan Robinson, City Demographer, Department of Planning, City of Austin, December 2014.

Top 30 Fastest Growing Large (500K+) US Cities: 2010 to 2013



City of Austin Jurisdiction

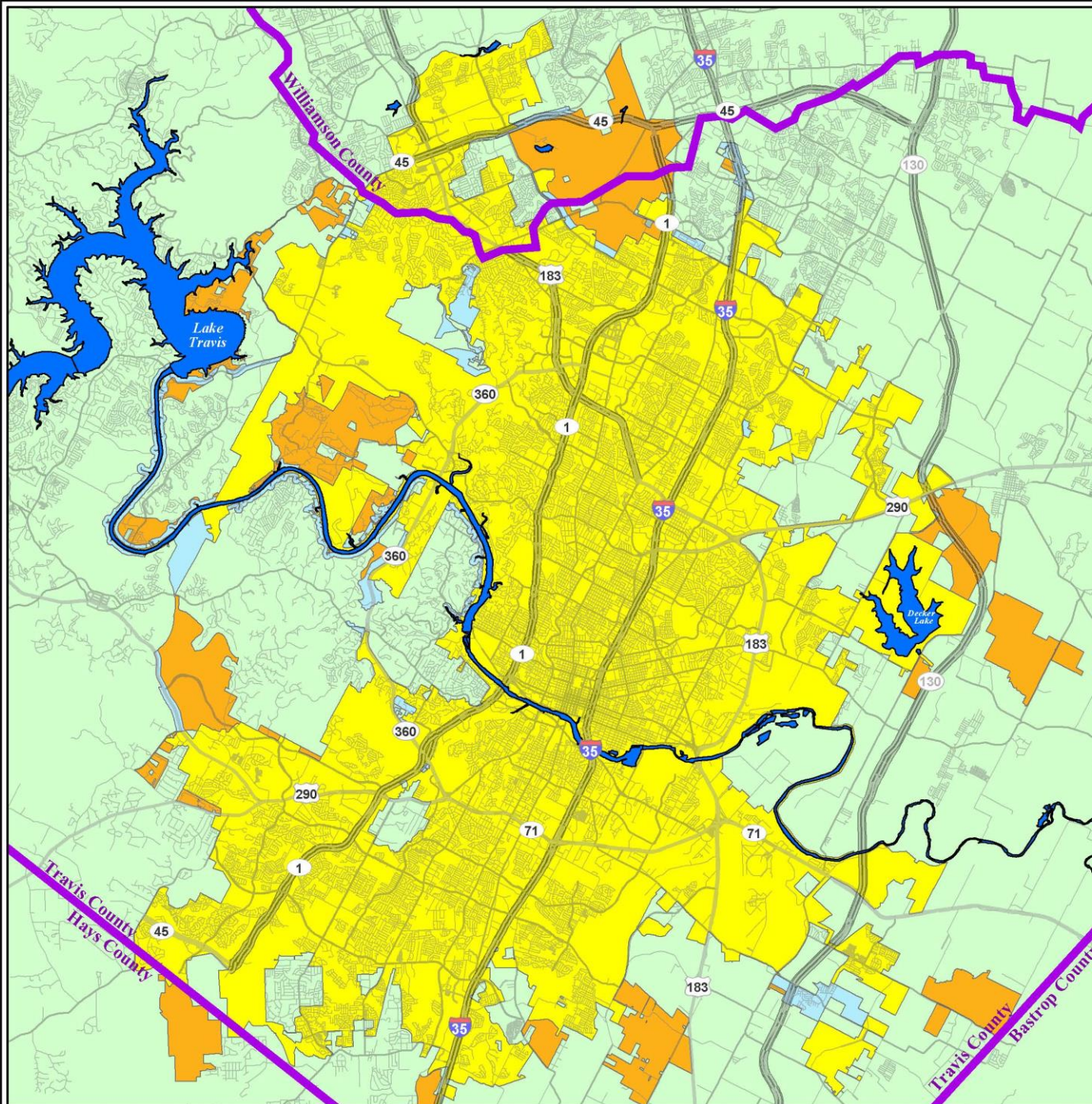
December 2014

Legend

- Full Purpose
- Limited Purp. Type 1
- Limited Purp. Type 2
- Limited Purp. Type 3
- County Line


320 Square Miles

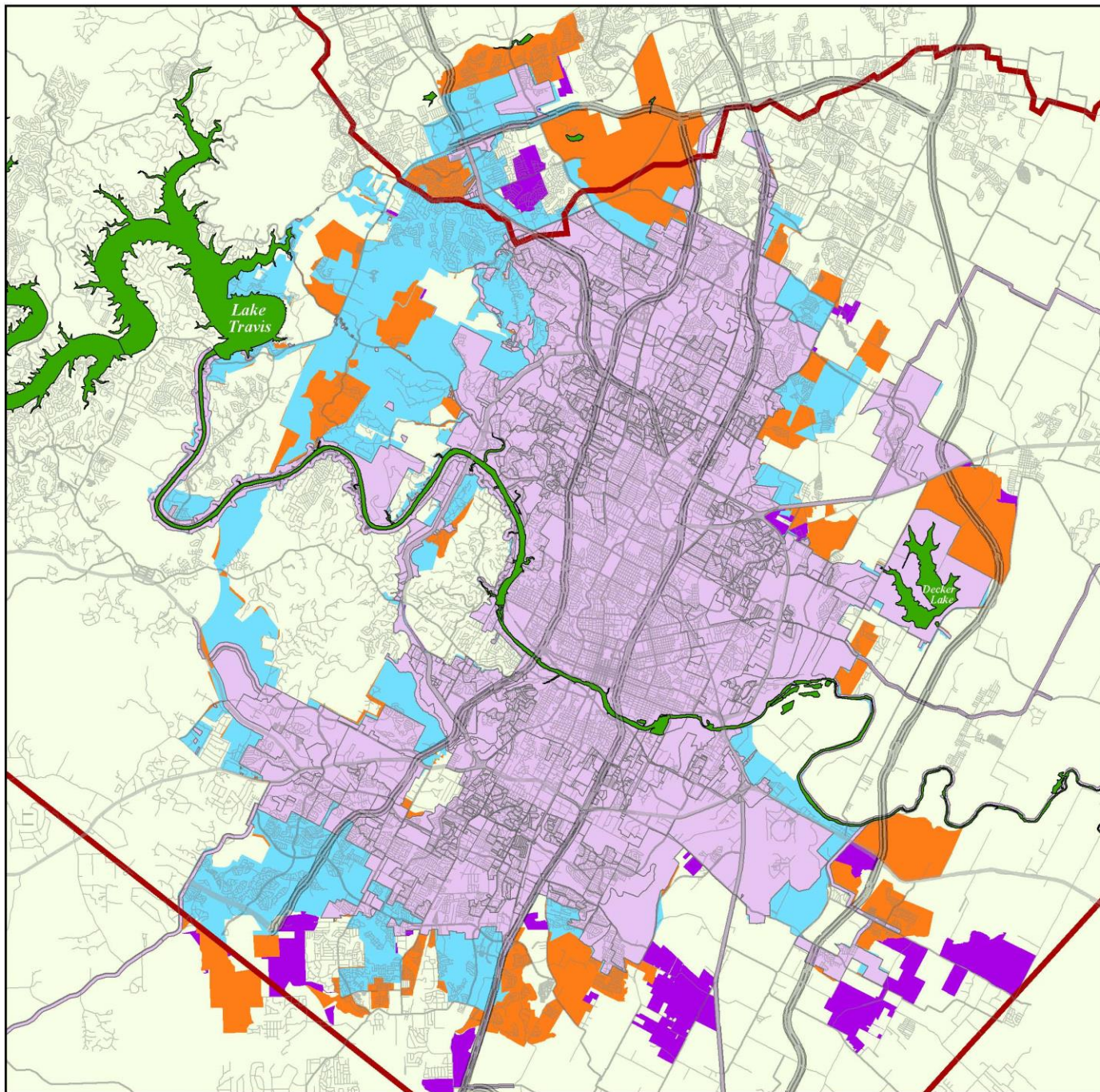
Austin, Texas



City of Austin Jurisdictional Change: 1990 to 2014

320 Square Miles

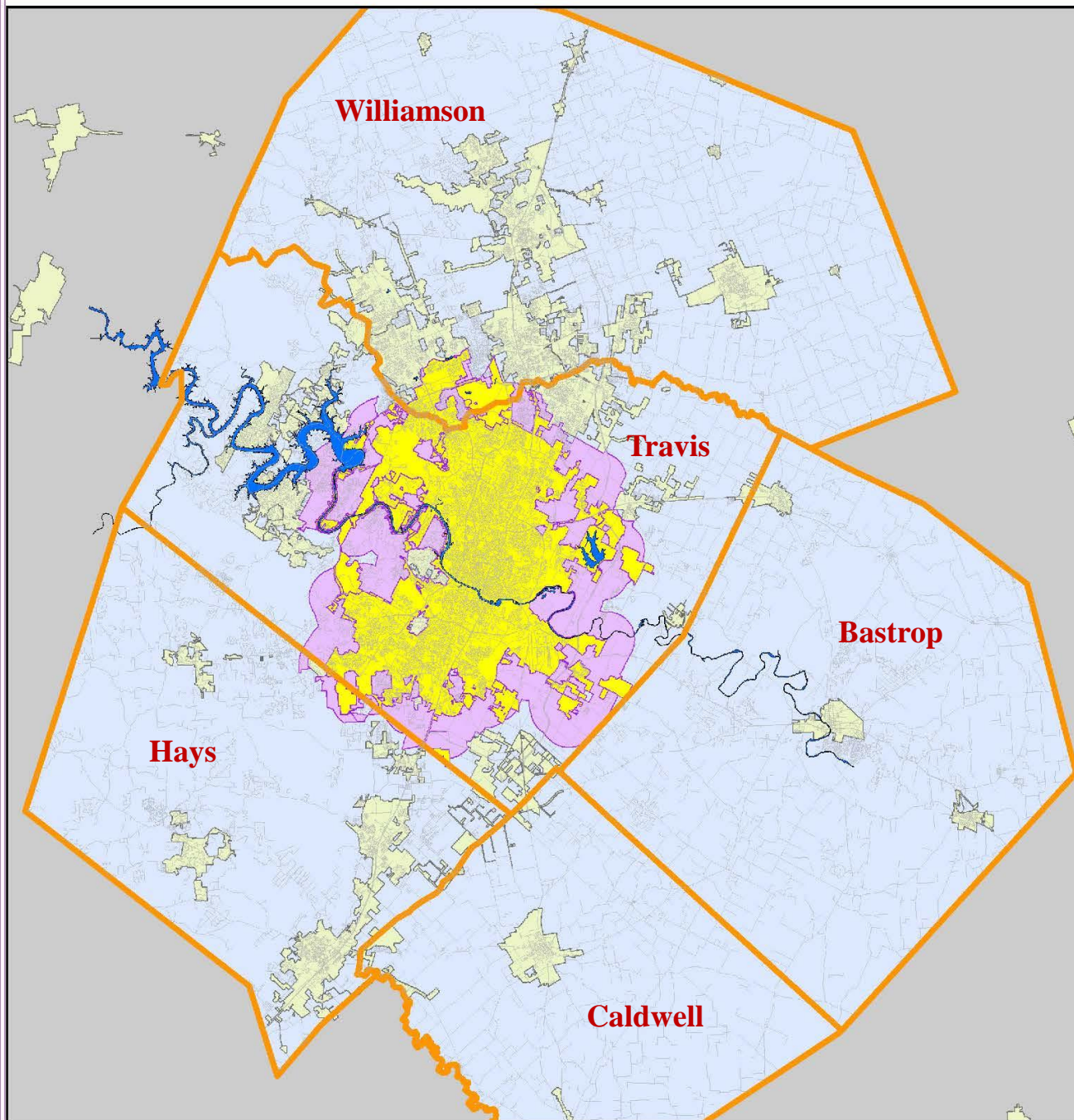
-  City Limits 1990
-  1990 to 2000
-  2000 to 2010
-  2010 to 2014



Austin-- Round Rock MSA

Metropolitan Statistical Area

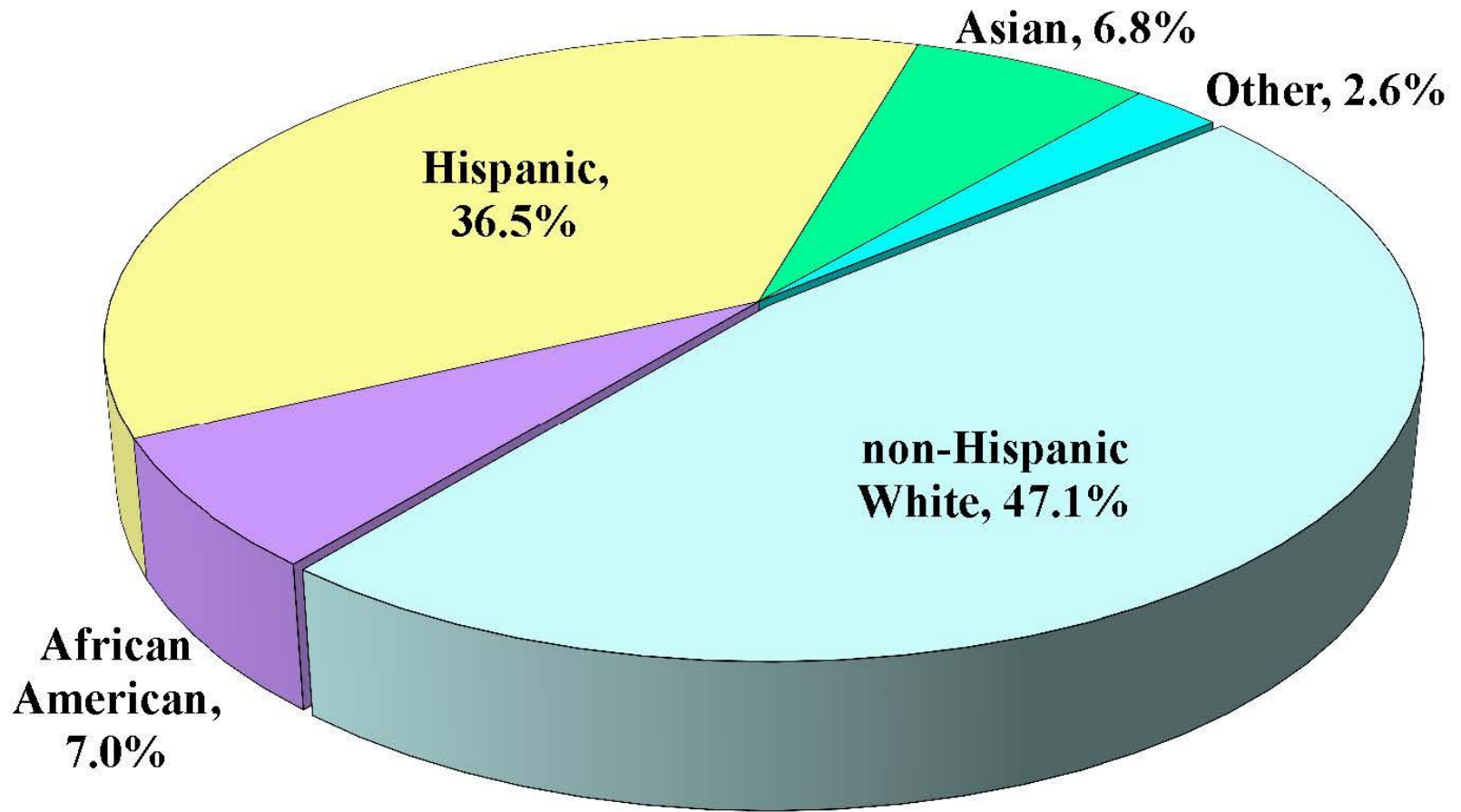
January 2013



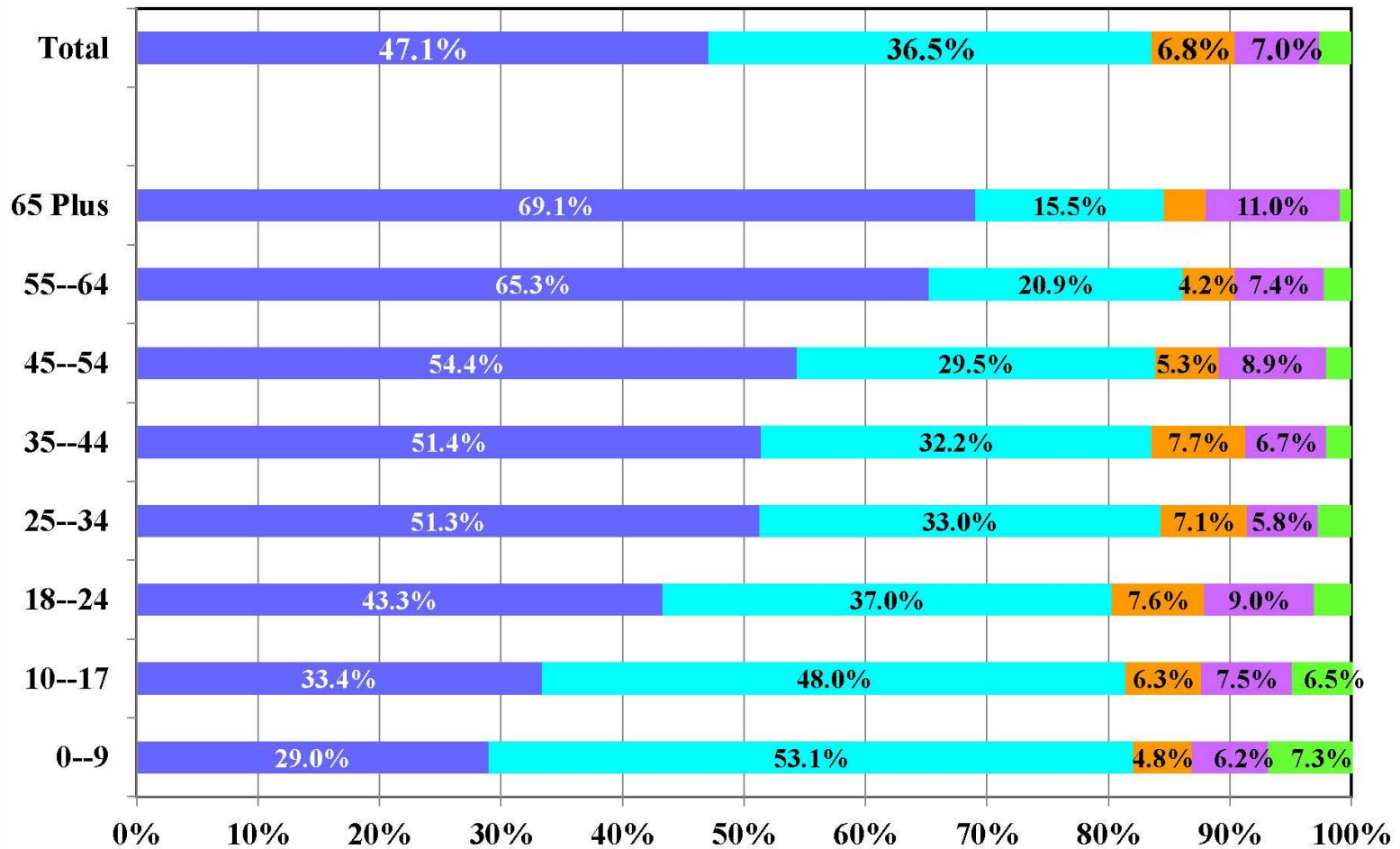
**City of Austin
Full and Limited
Jurisdiction**

**City of Austin
Extra-Territorial
Jurisdiction**

Racial and Ethnic Mix, City of Austin, 2014 Estimates



Age Structure by Race and Ethnicity, City of Austin, 2014 Estimates



Source: American Community Survey,
2013 1-year datasets, Table B01001,
updated with estimates from the City
Demographer.

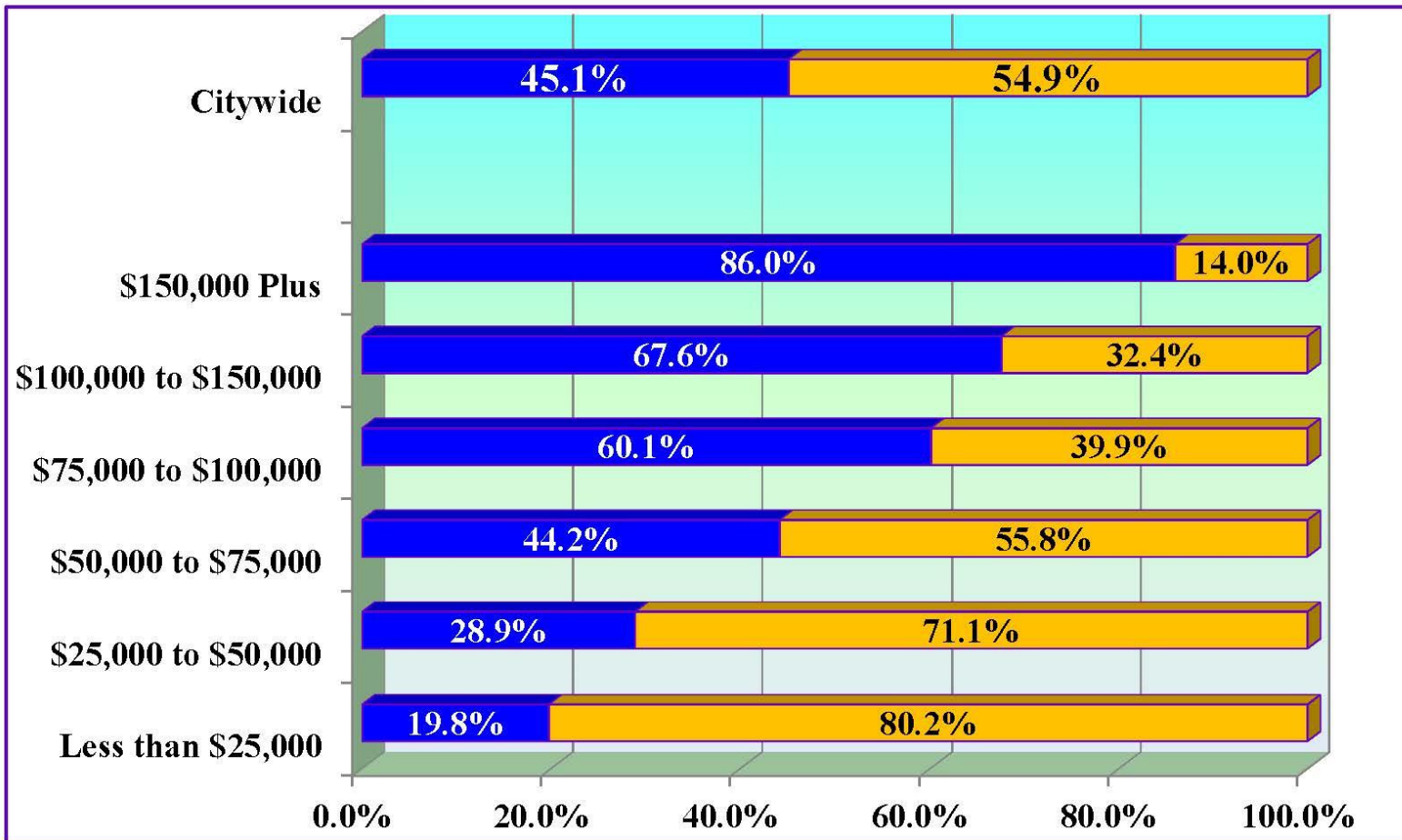
■ White
 ■ Hispanic
 ■ Asian
 ■ African American
 ■ Multi/Other

Affordability and Demographic Change in Austin



1. The long-term rapidity of job and population growth in central Texas is driving a collapse in overall affordability, especially within the central city.
2. **Austin is still relatively affordable from a national perspective, but much less so than in the past.**

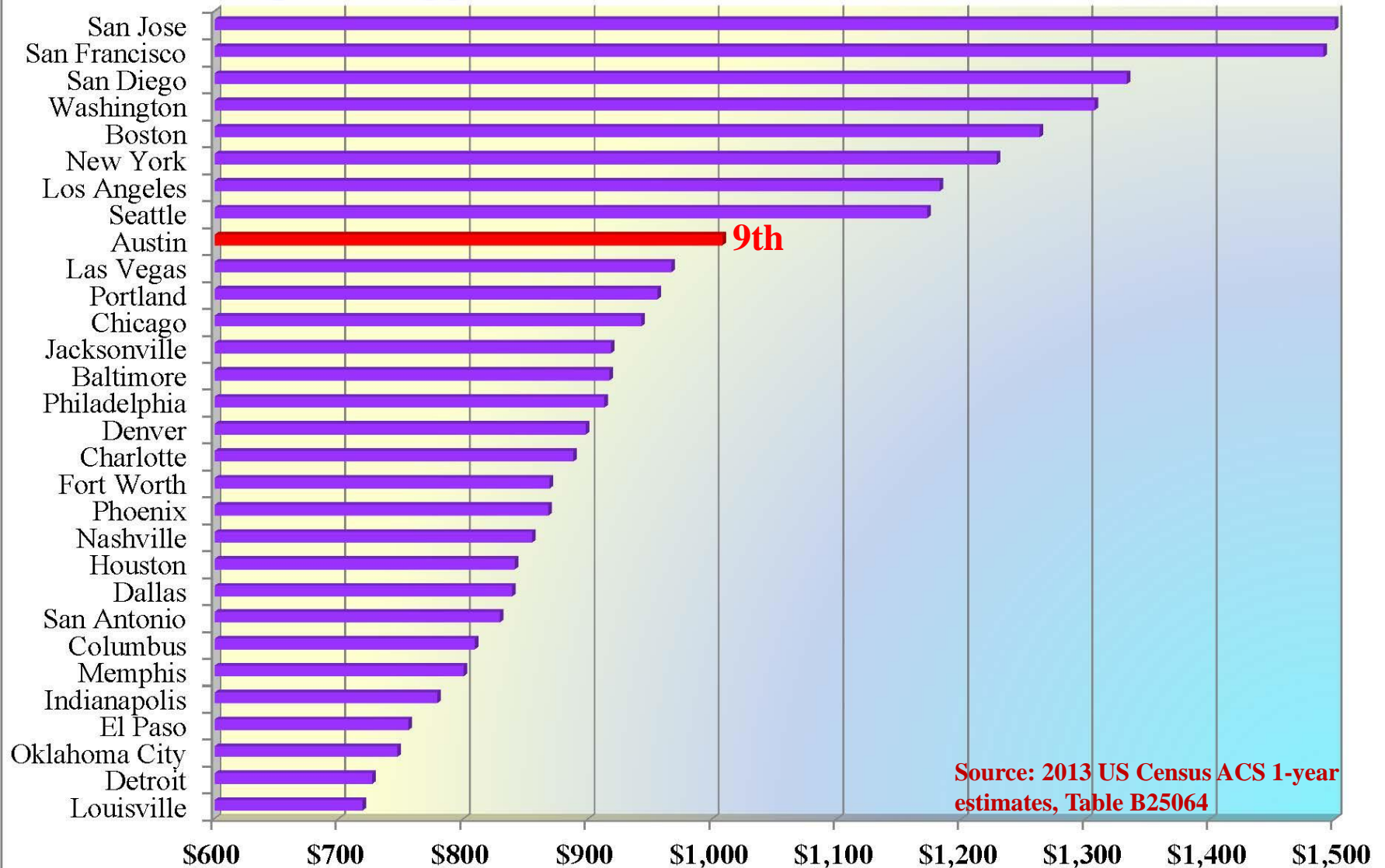
Owners and Renters by Income Bracket, City of Austin, Universe = Households, 2013 data



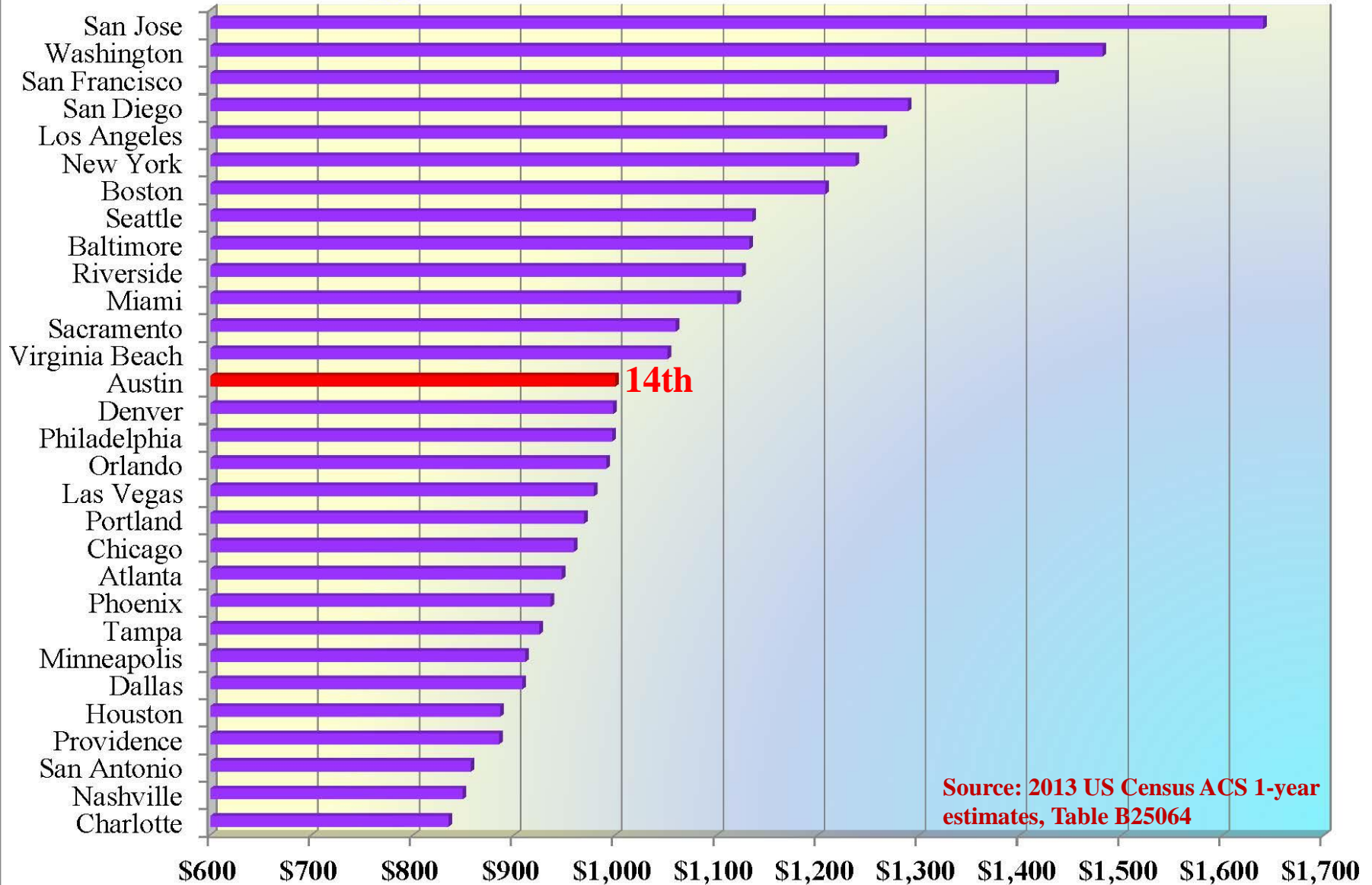
Source: American Community Survey, US Census Bureau, 2013 1-year dataset, Table B25118.

■ Owners ■ Renters

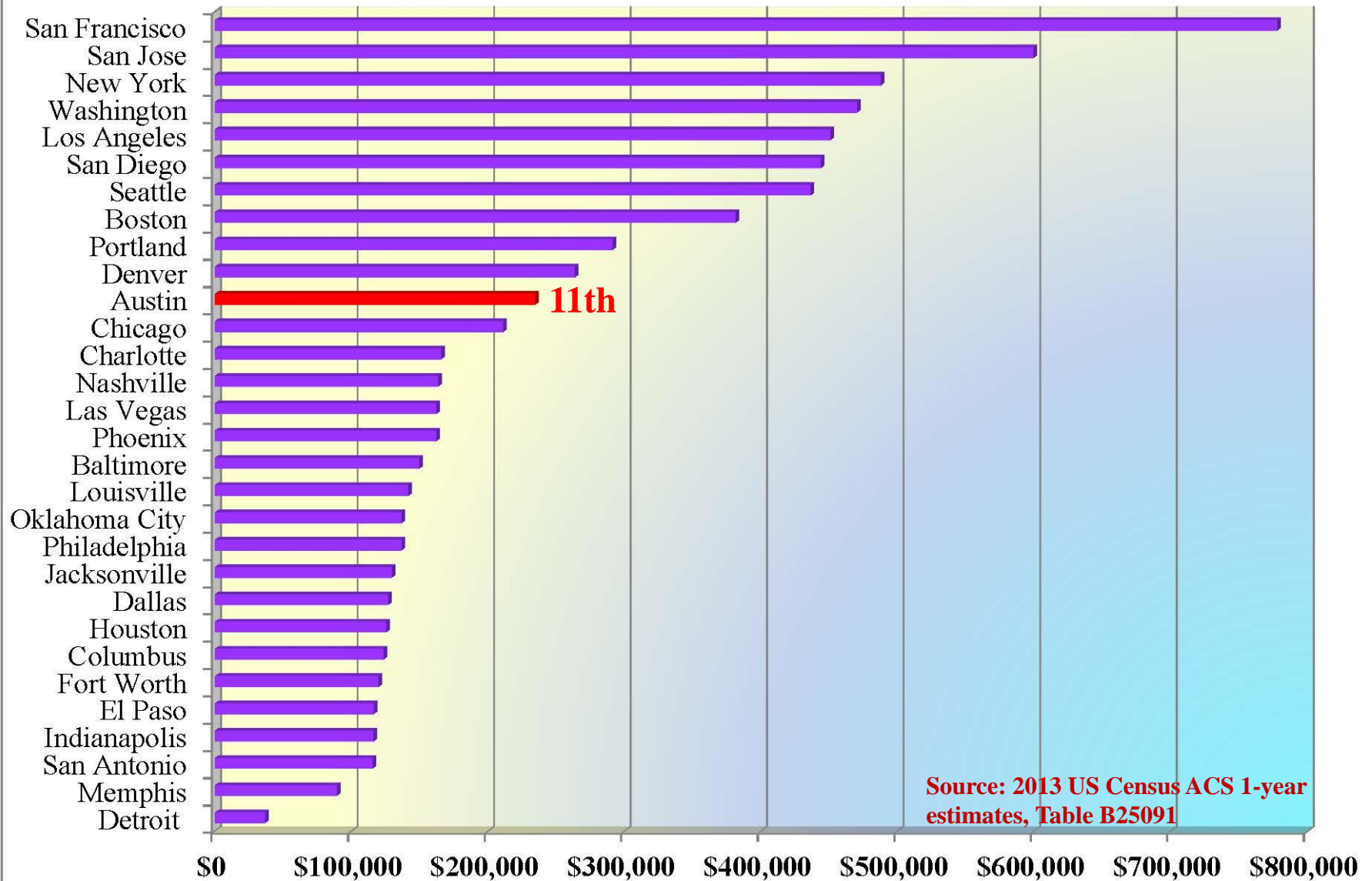
Top 30 Biggest US Cities and Median Rent, 2013



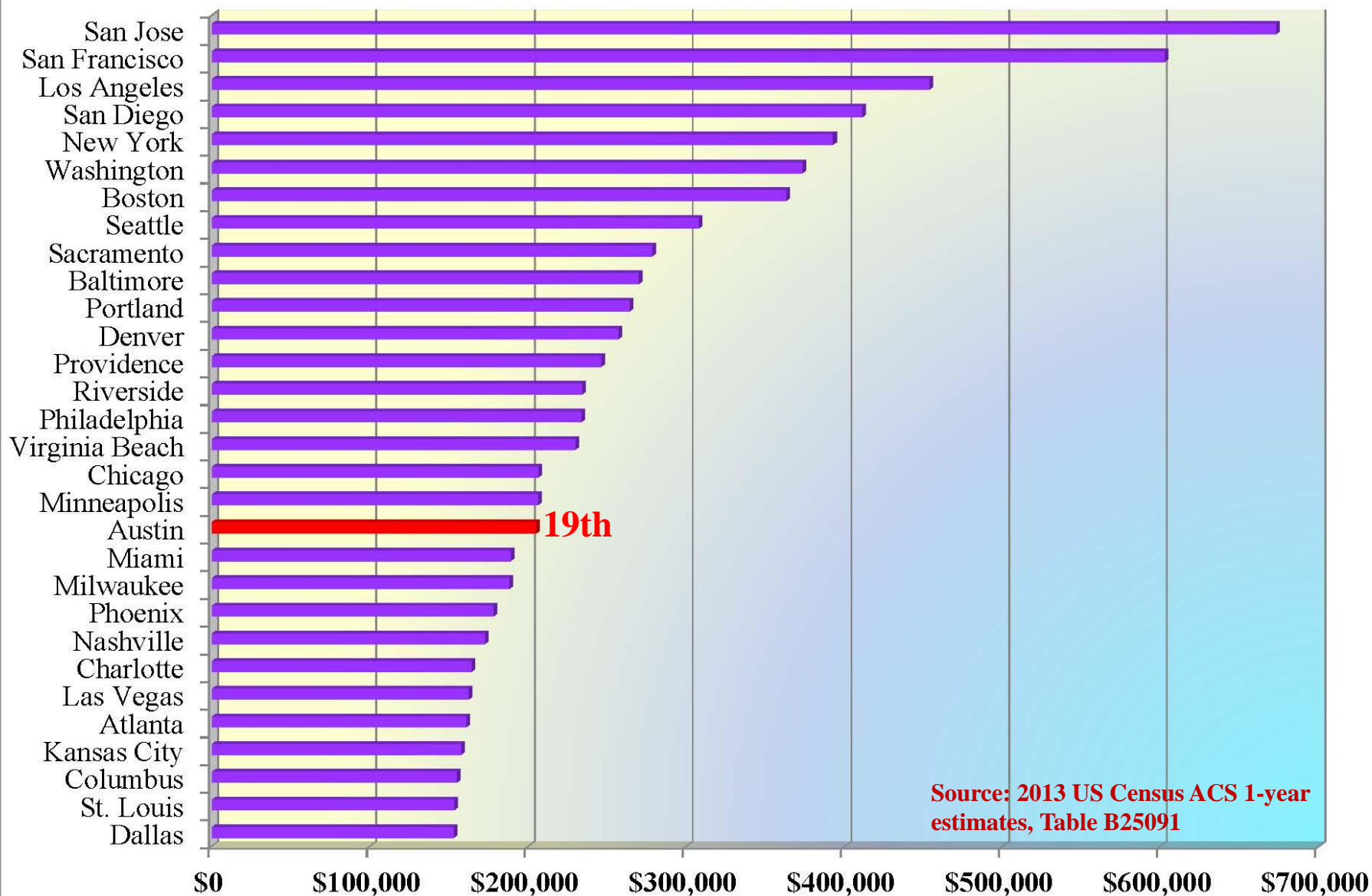
Biggest US Metros and Median Rent, 2013



Top 30 Biggest US Cities and Median Home Value, 2013



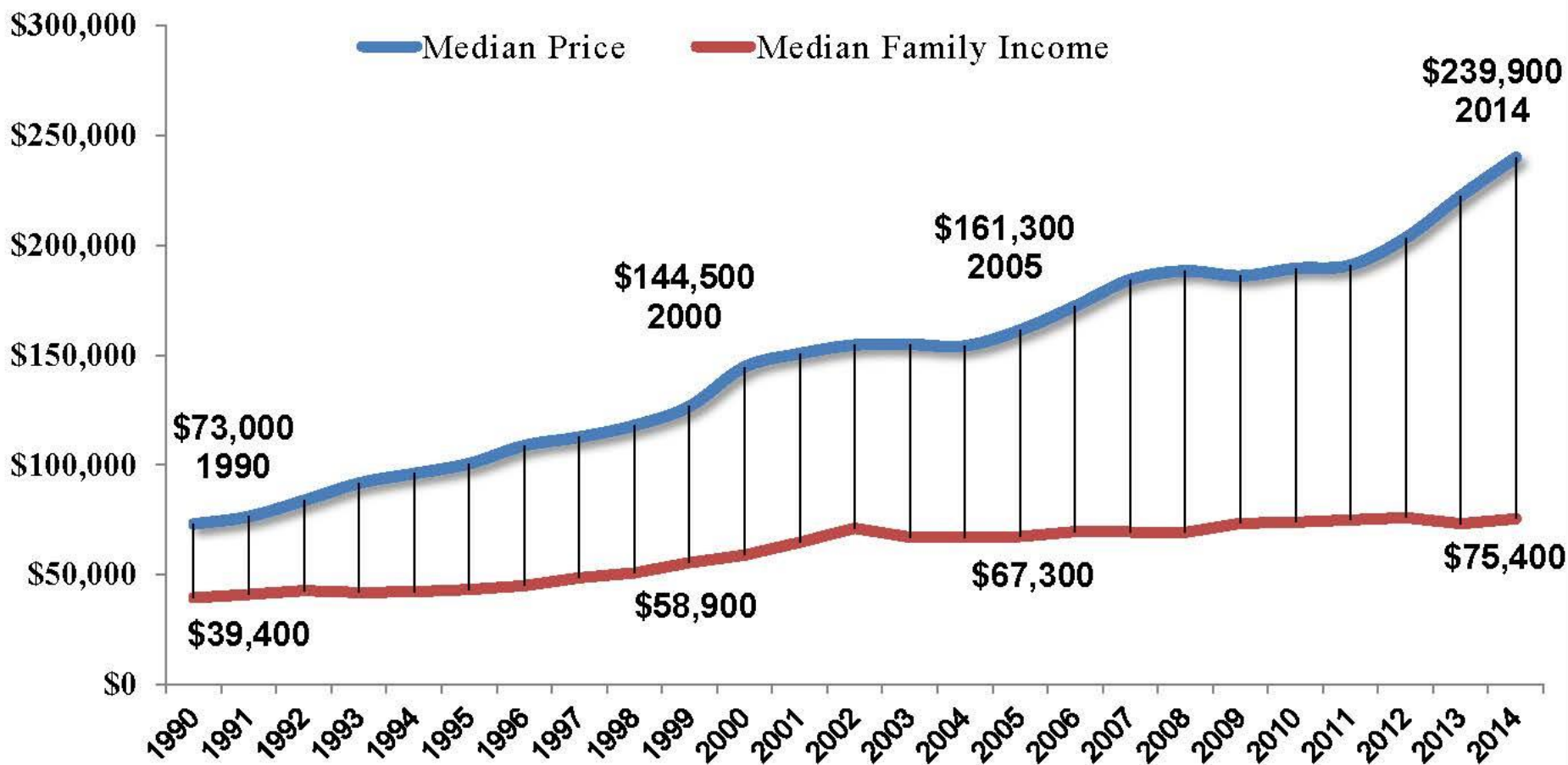
Biggest US Metros and Median Home Value, 2013



Affordability and Demographic Change in Austin

1. The long-term rapidity of job and population growth in central Texas is driving a collapse in overall affordability, especially within the central city.
2. Austin is still relatively affordable from a national perspective, but much less so than in the past.
3. **Relatively stagnant wages coupled with steep increases in housing costs are the main forces driving our affordability collapse.**

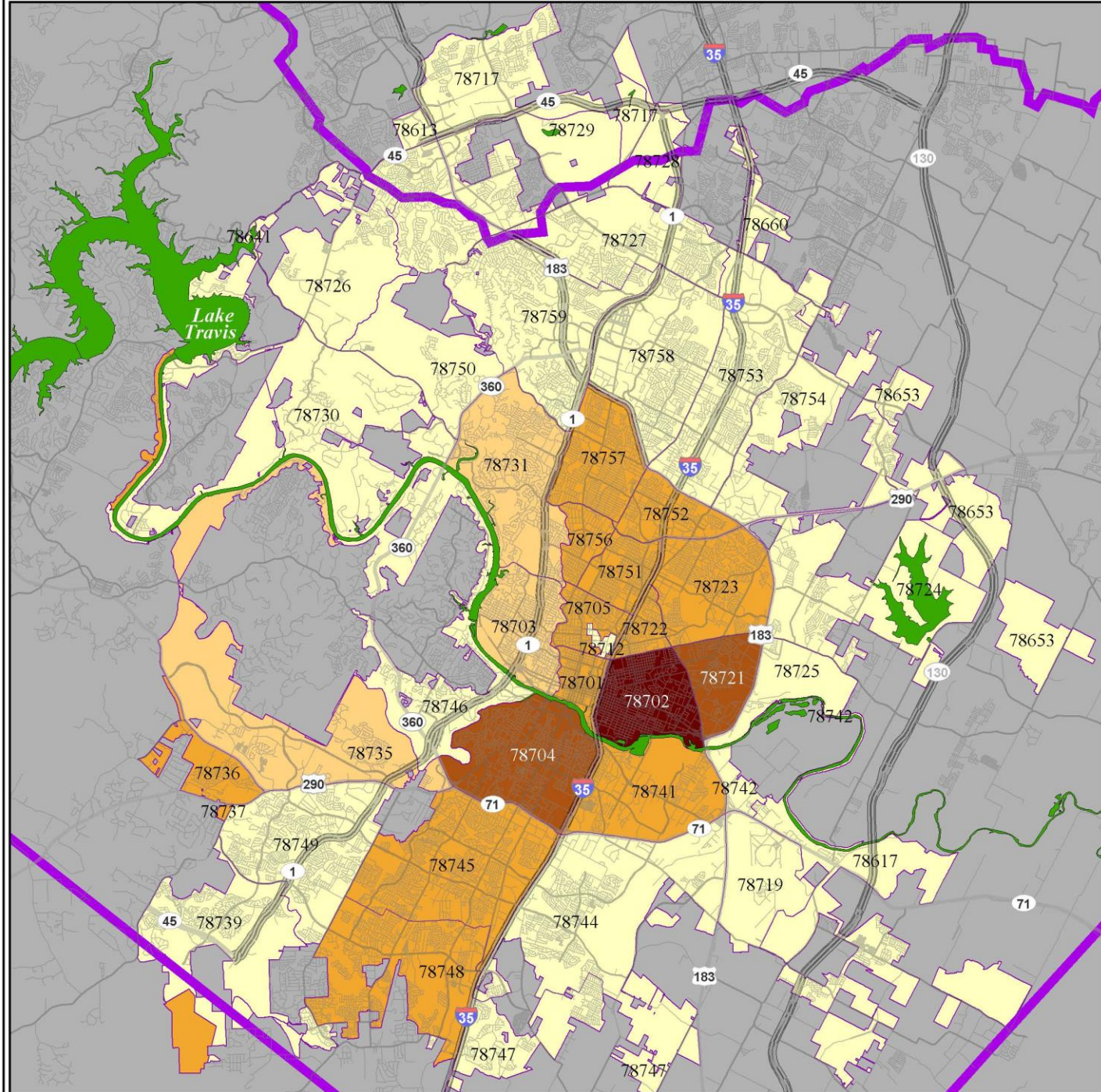
Austin Area median home prices compared with median family income 1990 - 2014



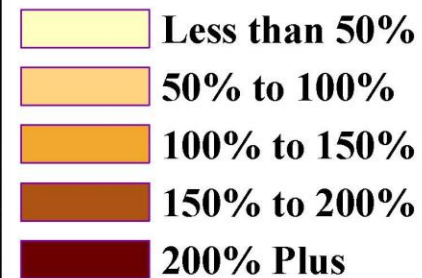
Affordability and Demographic Change in Austin

1. The long-term rapidity of job and population growth in central Texas is driving a collapse in overall affordability, especially within the central city.
2. Austin is still relatively affordable from a national perspective, but much less so than in the past.
3. Relatively stagnant wages coupled with steep increases in housing costs are the main forces driving our affordability collapse.
- 4. A strong dichotomy of affordability between the City and the remainder of the metro area is emerging. Austin is one of the most economically segregated metros in the country.**

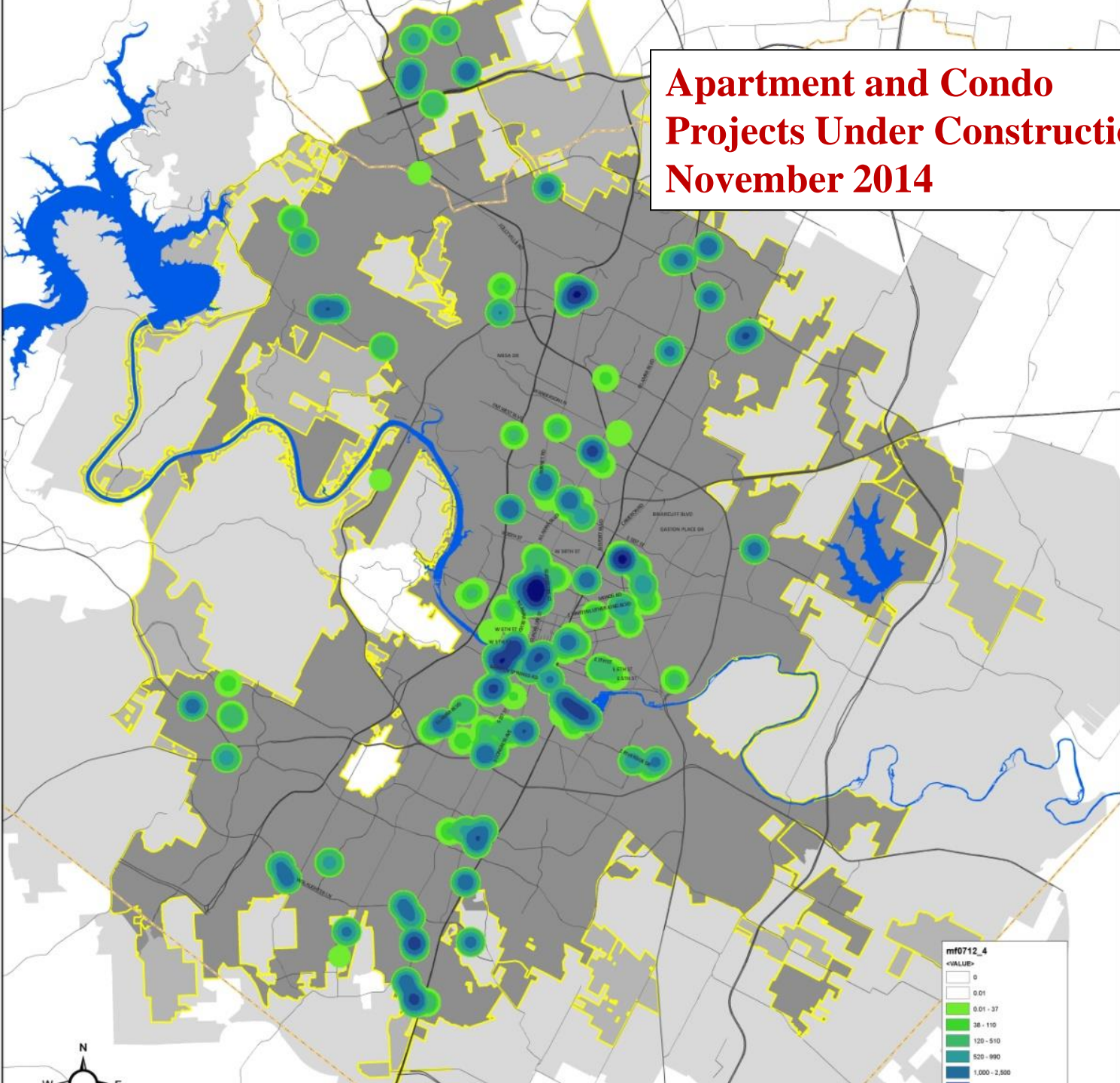
Median SF Value Change by ZIP Code: 2007 to 2014



Percent Change

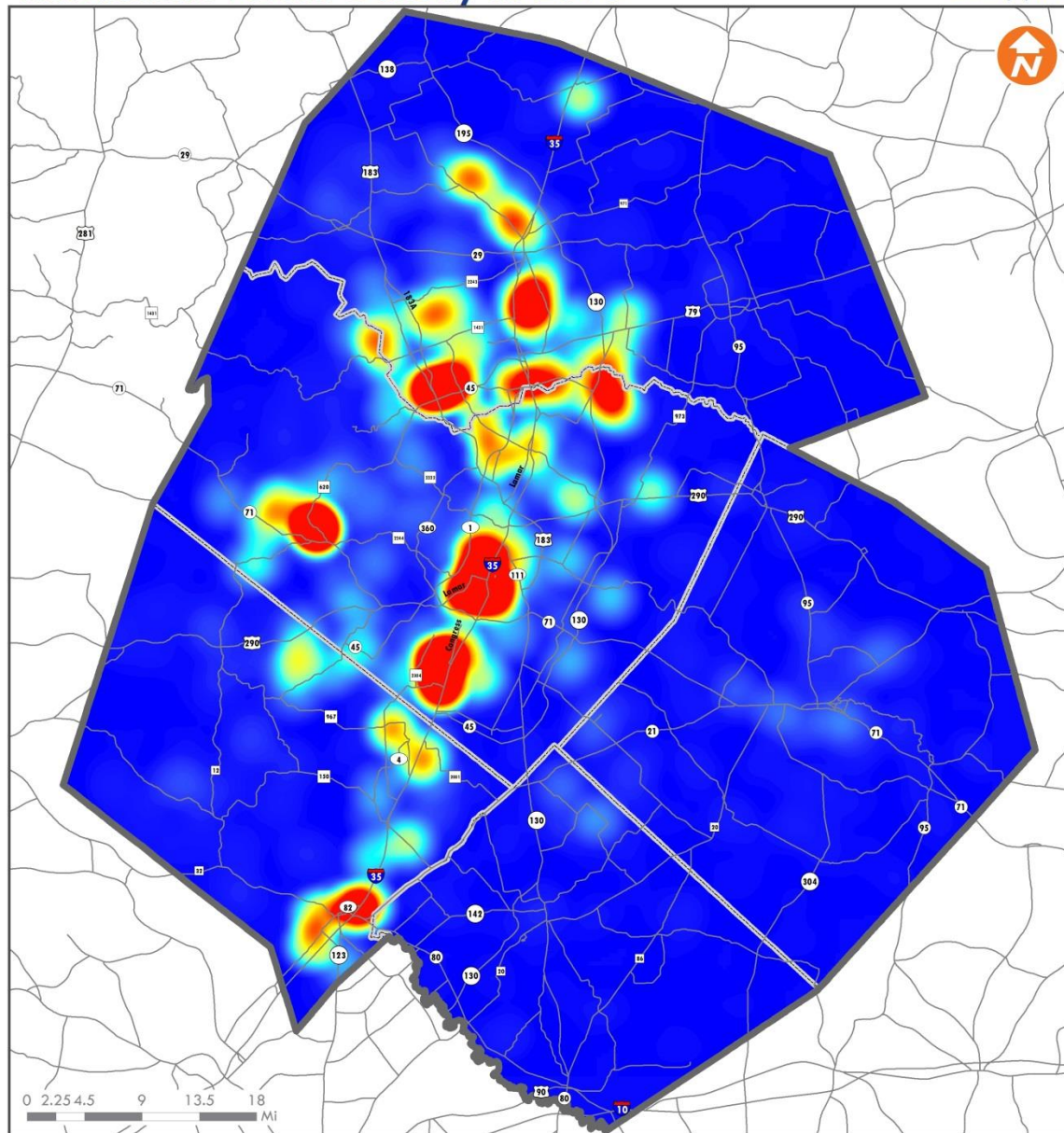


Apartment and Condo Projects Under Construction, November 2014



Residential Permit Density in 2013

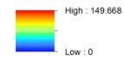
Travis County
Date: 3/9/2015



This map was developed by CAMPO for the purpose of aiding in regional transportation planning decisions and is not warranted for any other use. CAMPO makes no guarantee regarding its accuracy or completeness. If you would like to receive the GIS layers found on this map send your request to: campo@camptexas.org.
Data Source: CAMPO

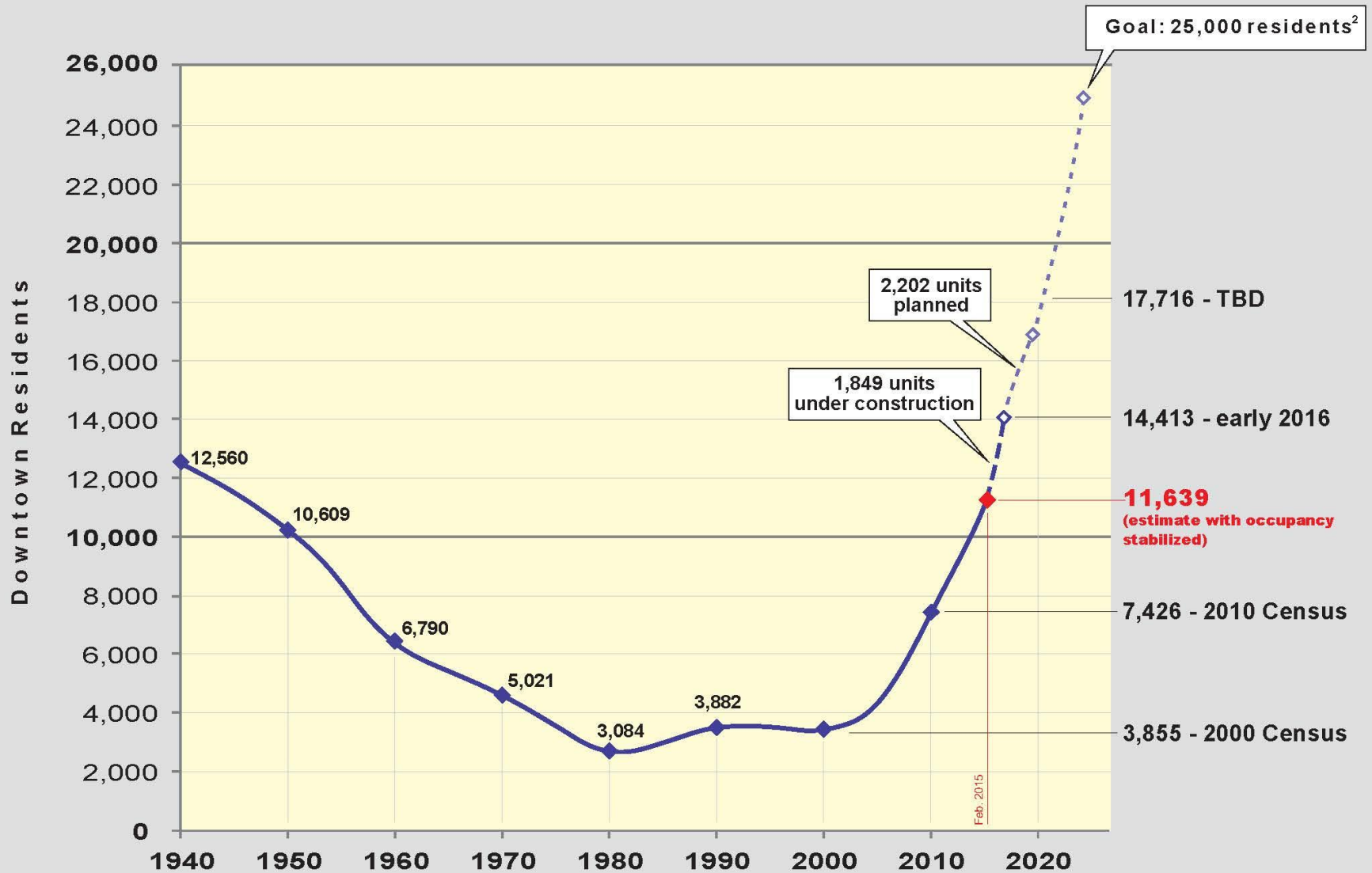
Author: GIS
Document Path: H:\Maps\Growth Monitoring\2009-2013 Report\Heat Map for Ryan Robinson.mxd

Residential Permit Density

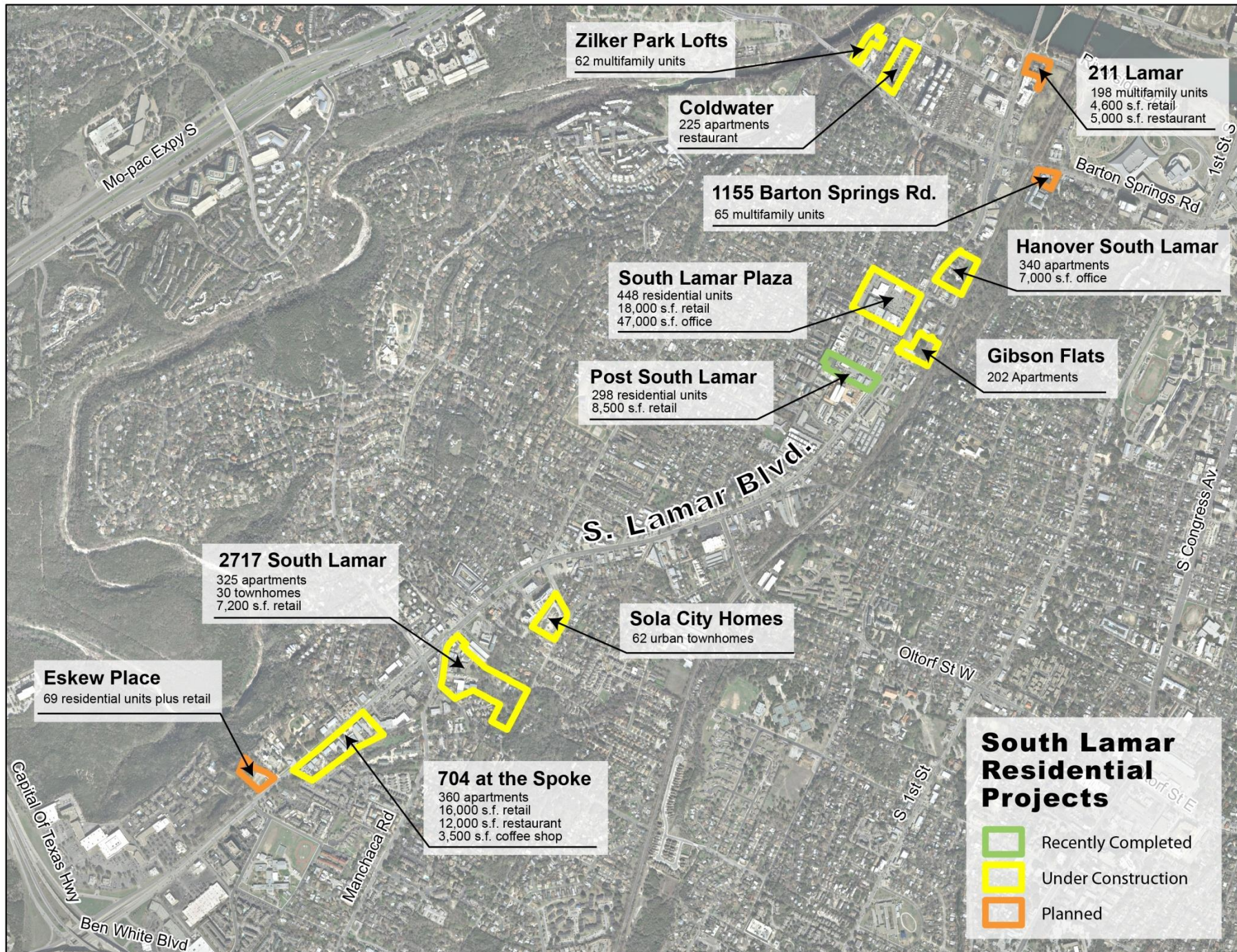


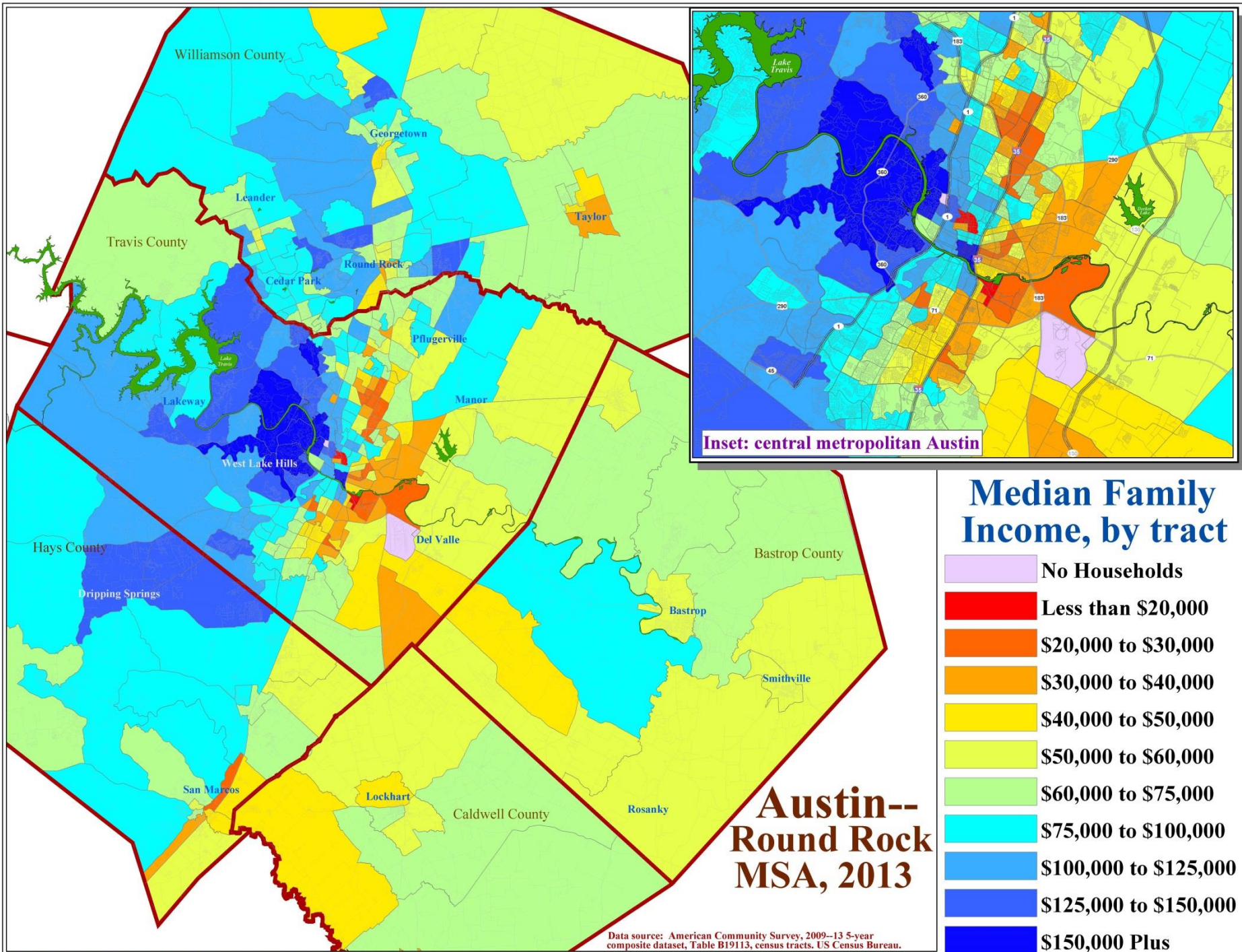


Downtown Austin¹ Residential Change — 1940-Present

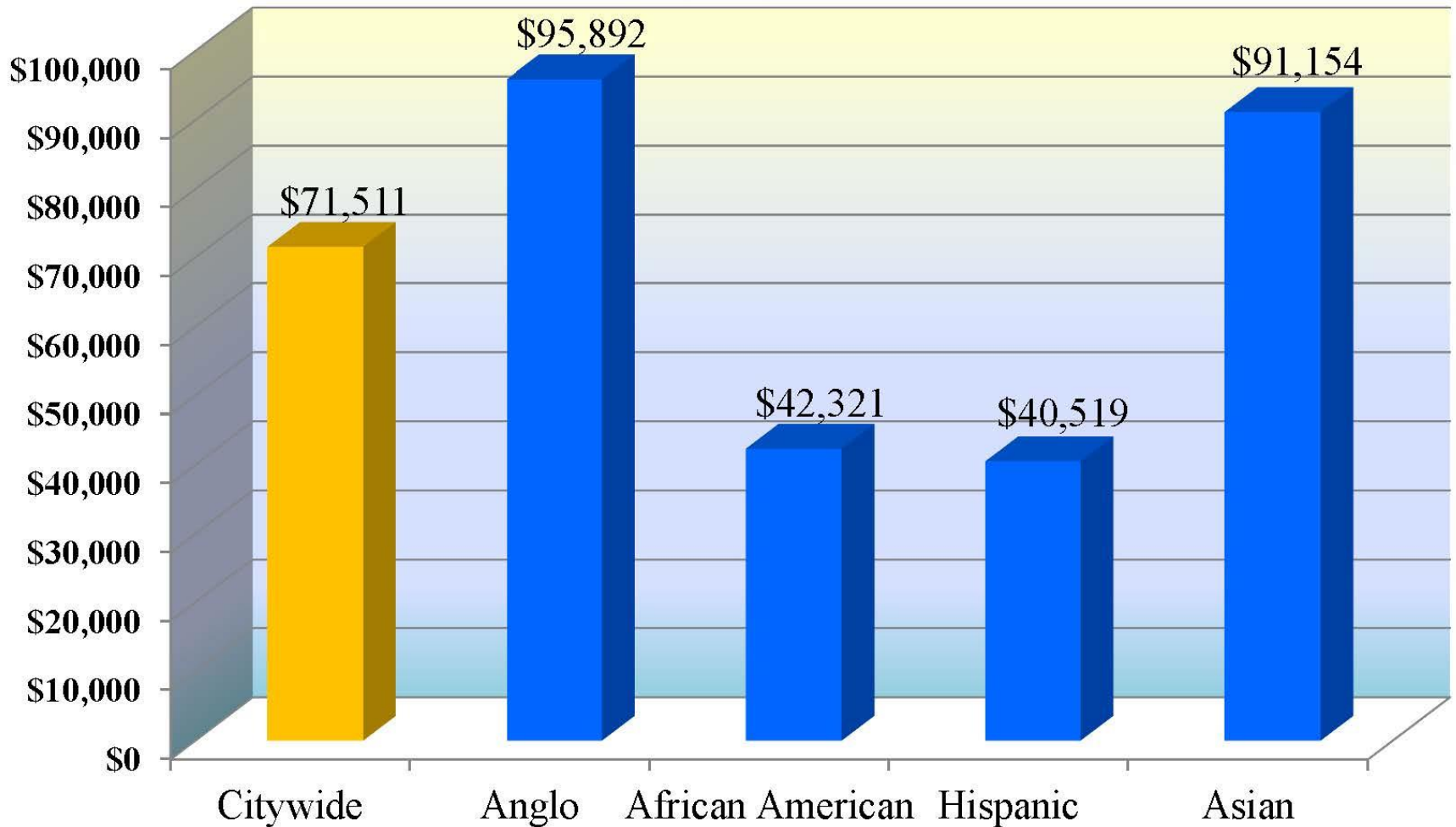


1. I-35 — Lady Bird Lake — Lamar — MLK
 2. Council Resolution 20051215-056





Median Family Income by Race and Ethnicity, City of Austin, 2013



Source: American Community Survey, 2013 1-year estimates, Table B19113.

Affordability and Demographic Change in Austin

1. The long-term rapidity of job and population growth in central Texas is driving a collapse in overall affordability, especially within the central city.
2. Austin is still relatively affordable from a national perspective, but much less so than in the past.
3. Relatively stagnant wages coupled with steep increases in housing costs are the main forces driving our affordability collapse.
4. A strong dichotomy of affordability between the City and the remainder of the metro area is emerging. Austin is one of the most economically segregated metros in the country.
5. **Changes in affordability are influencing demographic landscapes.**

Poverty Rates by Age Group, Race and Ethnicity

City of Austin

American Community Survey, 2013, 1-year Estimates Series, Table B17001

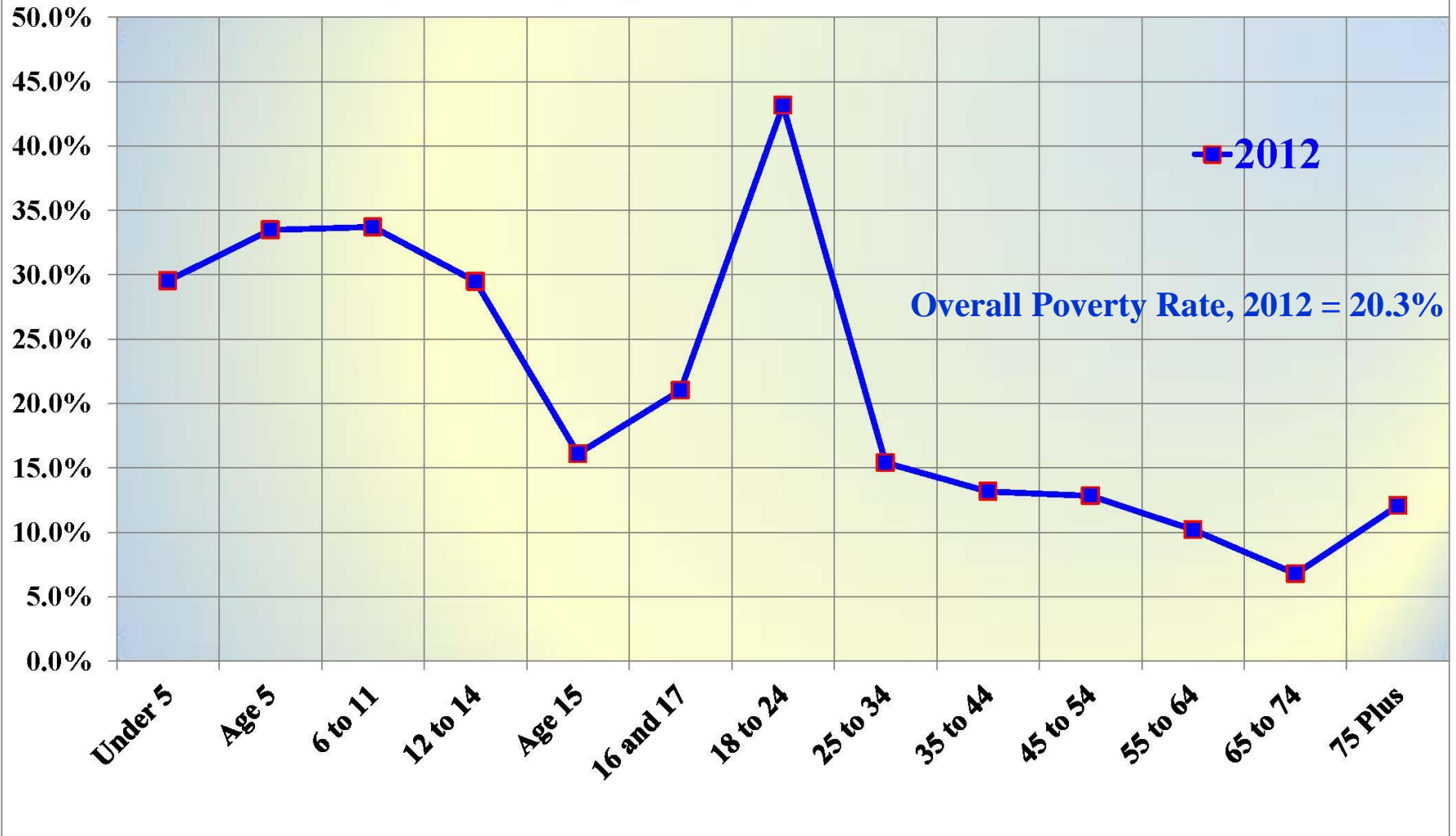
Table I: Poverty Rates (1)

Category or Group	Overall Population	non-Hispanic White	African American	Hispanic	Asian
Overall Population	17.8%	10.6%	24.2%	27.5%	15.3%
Under Age 5	22.6%	5.4%	51.8%	33.0%	9.6%
Under Age 18	23.6%	6.8%	34.6%	36.5%	10.3%
Age 65 Plus	8.4%	4.0%	13.0%	19.9%	19.6%

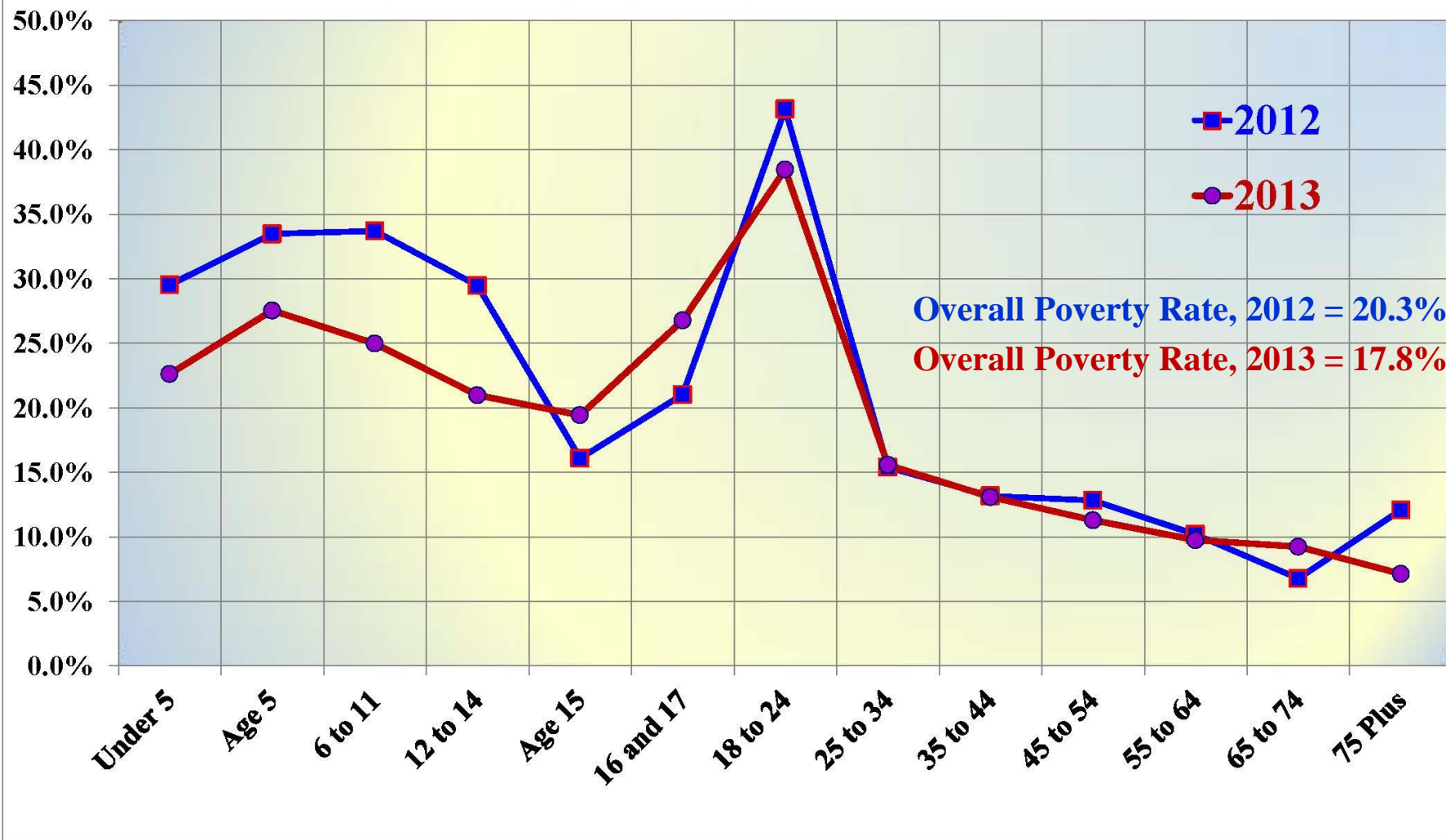
NOTES:

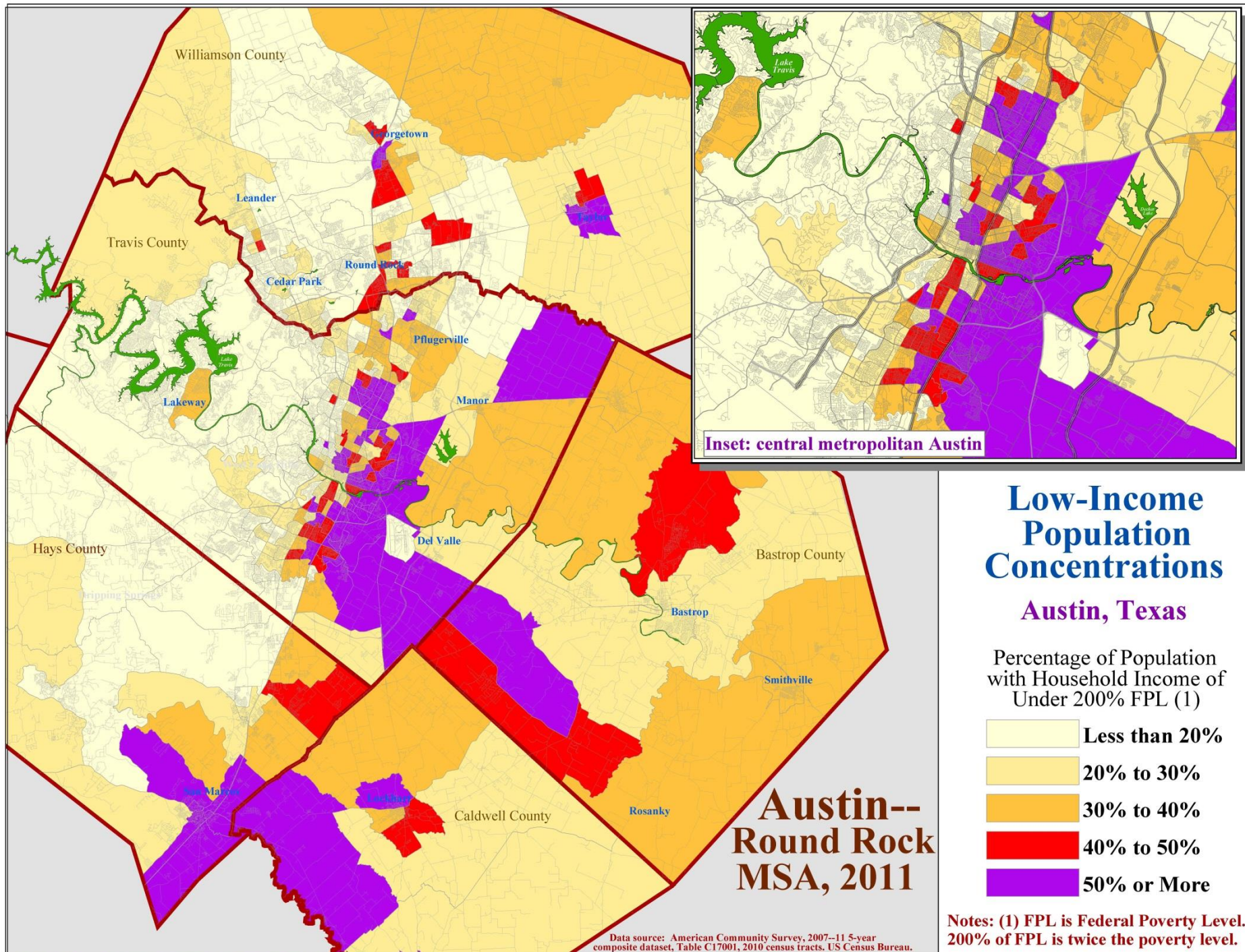
(1) The source for data behind this table on Poverty in metropolitan Austin is the American Community Survey, which is produced by the US Census Bureau. Data for this table are from the 2013 1-year Estimates Series. Poverty rates are calculated for only the portion of the total population that lives within a household, poverty rates are not calculated for institutionalized persons or individuals living within Group Quarters situations. The Poverty Rate is a function of total annual household income and the number of individuals within a household. The 2013 Poverty threshold for a family of four was \$23,835

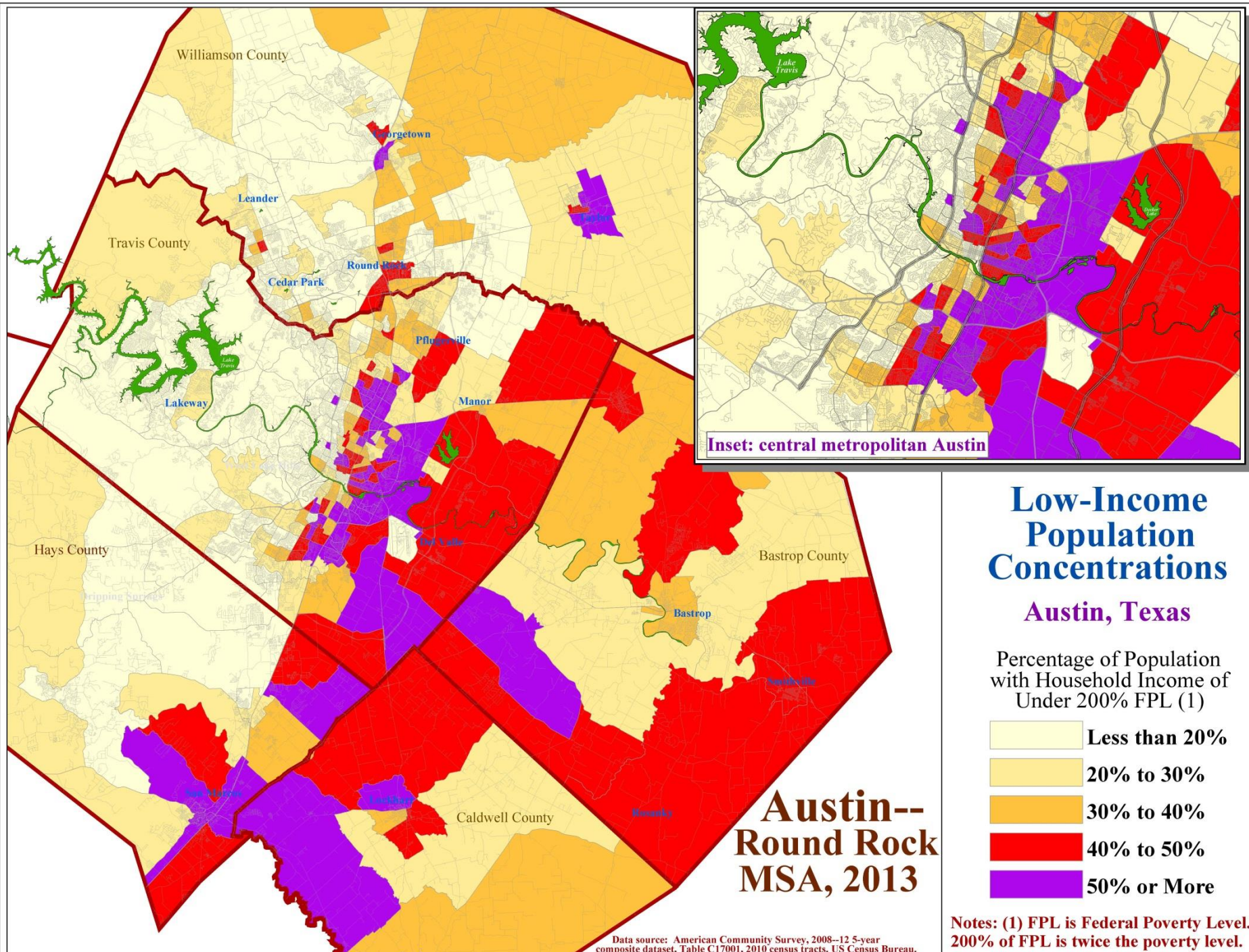
Poverty Rates by Age, City of Austin, 2012 and 2013



Poverty Rates by Age, City of Austin, 2012 and 2013





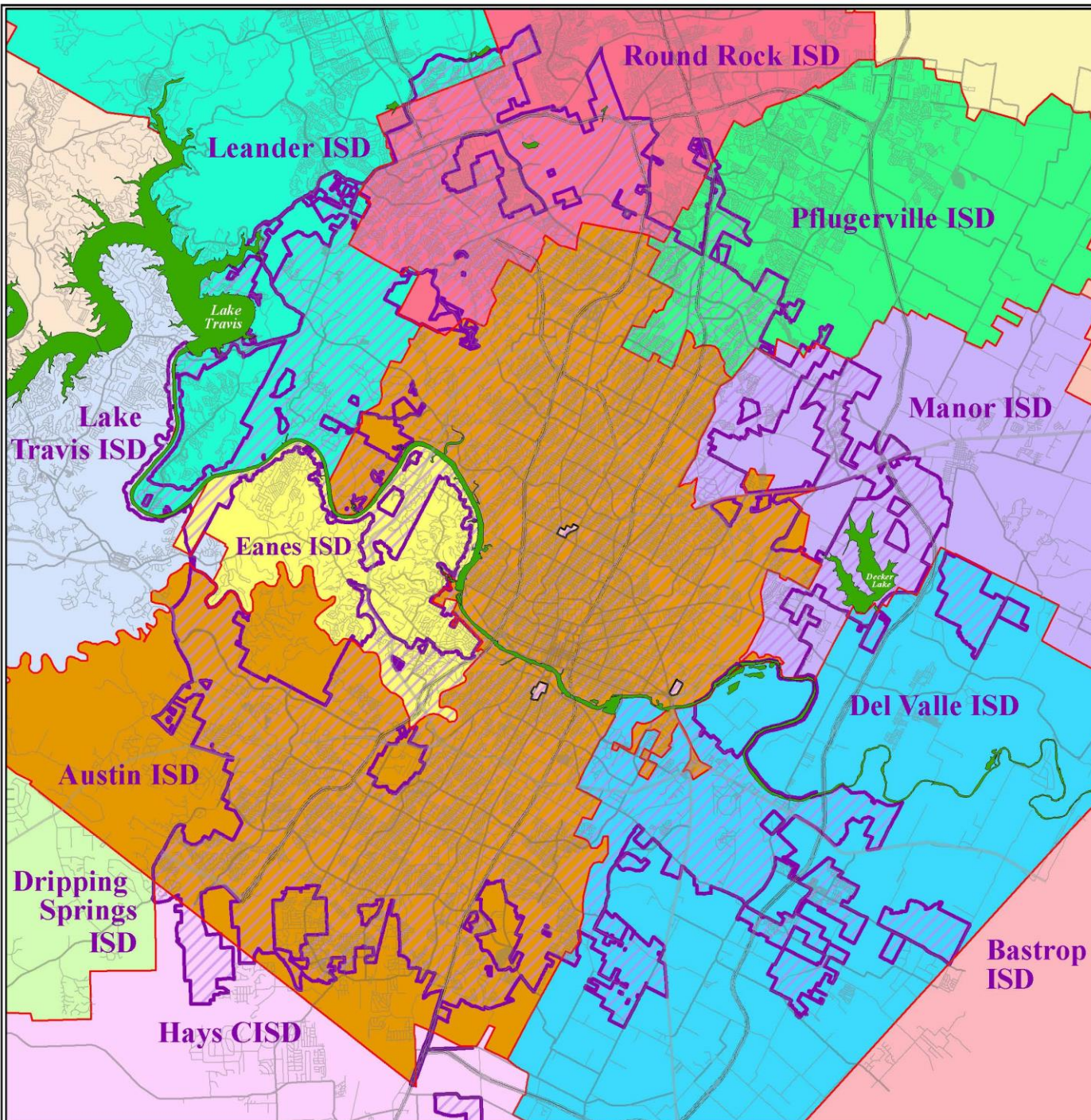


Regional School Districts and the City of Austin

March 2013



**City of
Austin**



School District	Square Miles	Percent of City
	within City of Austin	
Austin ISD	172.4	54.1%
Del Valle ISD	38.2	12.0%
Round Rock ISD	32.5	10.2%
Leander ISD	25.6	8.0%
Manor ISD	21.8	6.9%
Eanes ISD	11.7	3.7%
Pflugerville ISD	10.7	3.4%
Hays CISD	3.8	1.2%
Lake Travis ISD	1.4	0.4%
State of Texas	0.3	0.1%
	318.6	100.0%