



City of Austin Historic Cemeteries Master Plan

Kim McKnight, MSHP

Presentation to Urban Forestry Board

April 15, 2015



Process to Date

- 2012: Parks Board Working Group to identify issues and concerns
- Summer, 2013: 6 meetings to develop Scope of Work
- Fall, 2013: RFP issued
- March, 2014: Contract with AmaTerra Env. Executed; includes tree assessment and survey
- Community Meetings
 - April 30, 2014: Carver Branch Library
 - June 26, 2014: NW Recreation Center
 - August 23, 2014: Ruiz Branch Library
 - November 2, 2014: Zilker Botanical Garden
 - January 24, 2015: Carver Branch
- January 23-March 9, 2015: Draft Master Plan Posted to Website for Community Review
- Early April, 2015: Post revised draft for Boards, Commissions & Council



Community Engagement

- 6 Scope of Work development meetings
- 5 public meetings
- Board and Commission process
- Media releases
- Monthly newsletters throughout entire process placed in libraries and recreation centers
- Email notices
- City website and project website
- Signage in Cemeteries
- Extensive outreach through more than 70 social media outlets
- Interviews with 25 Stakeholders
- Outreach targeted to Community Registry, Austin Neighborhoods Council, Save Austin's Cemeteries, Preservation Austin, African-American Cultural Heritage District



The draft Master Plan

Part I: Introduction

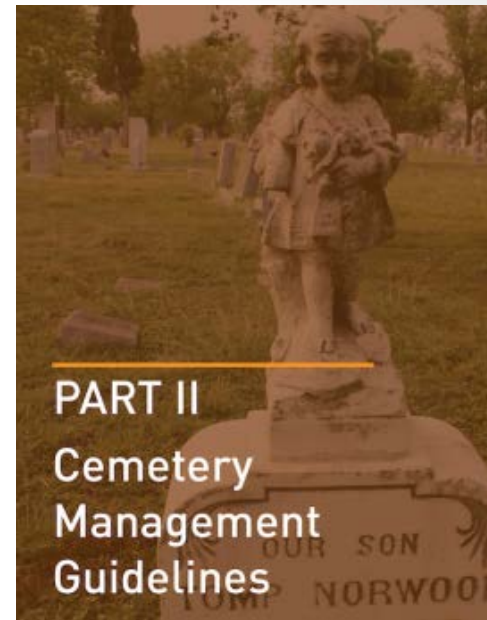
1. Introduction
2. Natural, Historical, and Cultural Contexts

Part II: Cemetery Management Guidelines

3. General Management Guidelines
4. Oakwood Cemetery
5. Oakwood Cemetery Annex
6. Plummers Cemetery
7. Evergreen Cemetery
8. Austin Memorial Park Cemetery

Part III: Policy and Funding Recommendations

9. Regulations and Laws
10. Cemetery Oversight
11. Emergency Preparedness
12. Historic Designations
13. Grave Ornamentation
14. Funding and Revenue
15. Partnerships and Programs



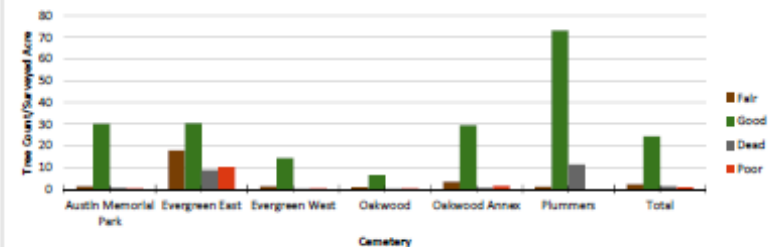
Tree Survey

Table 1. Tabular summary of acreages evaluated within each of the five historic cemeteries.

Cemetery	Open Acreage	Dense Acreage	Dense Survey Acreage	Total Tree Survey Area	Total Cemetery Acreage
Austin Memorial	74.4	5.6	3	77.4	80
Evergreen	21.4	8.4	4	25.4	29.8
Oakwood	39.3	0	0	39.3	39.3
Oakwood Annex	18.6	0	0	18.6	18.6
Plummers	3.4	3.8	2	5.4	7.2
Total	157.1	17.8	9	166.1	174.9



Summary of Tree Conditions at the City of Austin's Five Historic Cemeteries (count/acre)

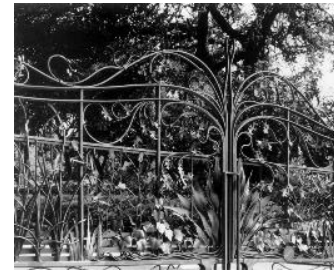
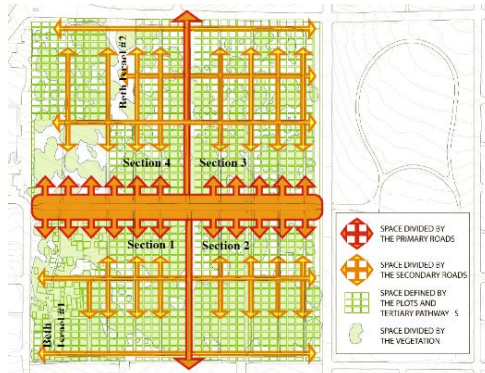


Dead Standing Trees Recorded at Each Cemetery

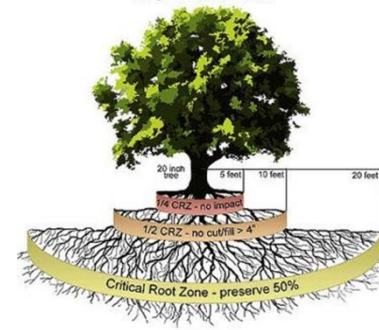


General Management Guidelines

- *Rehabilitation*
- *Spatial Organization and Circulation*
- *Vegetation, including trees*
- *Grave Markers, Plot Curbs, Plot Fencing*
- *Fences*
- *Site Furnishings*
 - *Benches, Signs and Kiosks*

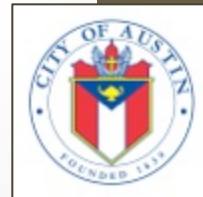
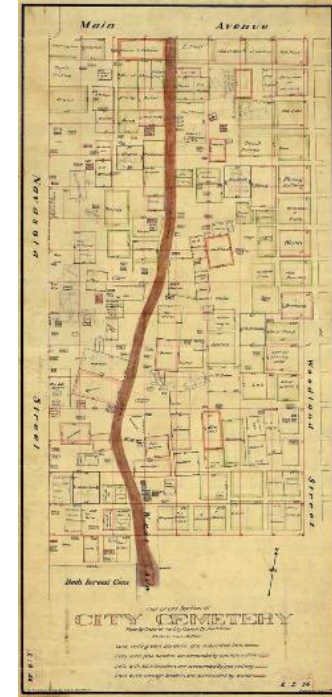
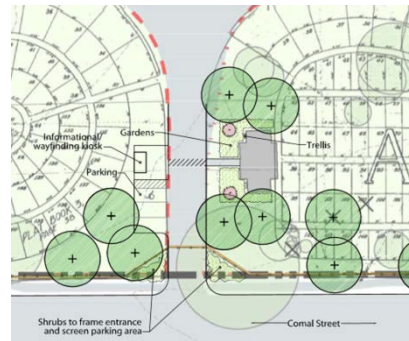


The Critical Root Zone - Development Impact Zones
Example: 20 inch diameter tree



Cemetery Treatment Guidelines for Individual Cemeteries

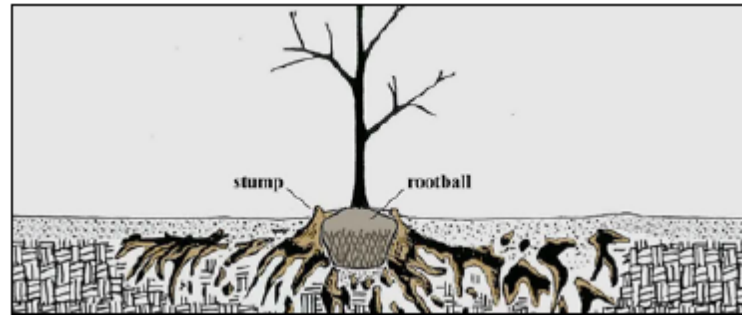
- Vegetation Conditions
- Marker Conditions
- Drainage
- Buildings and Facilities
- Appearance
- Boundary fencing and screening
- Wayfinding and interpretation
- Preservation and protection
- Visitor amenities
- Entrance and Access
- Vulnerability
- Expansion



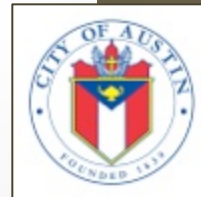
Cemetery Treatment Guidelines

related to trees

- Importance of Vegetation
- Historic Cemetery Trees
 - Preserving
 - Removing
 - Replacing
- Planting New Trees
- Trees of Special Concern
 - Post Oaks
 - Crape Myrtles
 - Eastern Red Cedar
- Preserving Historic Shrubs and Perennials



- Invasive Plants
- Cemetery Lawn Care
 - Analyze
 - Prepare
 - Plant
 - Maintain
- Irrigation



Process Going Forward

Please note that this is a tentative timeframe and subject to change:

- April, 2015: Present draft plan to Urban Forestry Board & Historic Landmark Commission
- May, 2015: Present final draft plan to Land Facilities & Program Committee, Parks and Rec Board
- June, 2015: Present final draft plan to Planning Commission & Open Space, Environment & Sustainability Committee of the Austin City Council
- Summer, 2015: Present final draft plan to the Austin City Council

