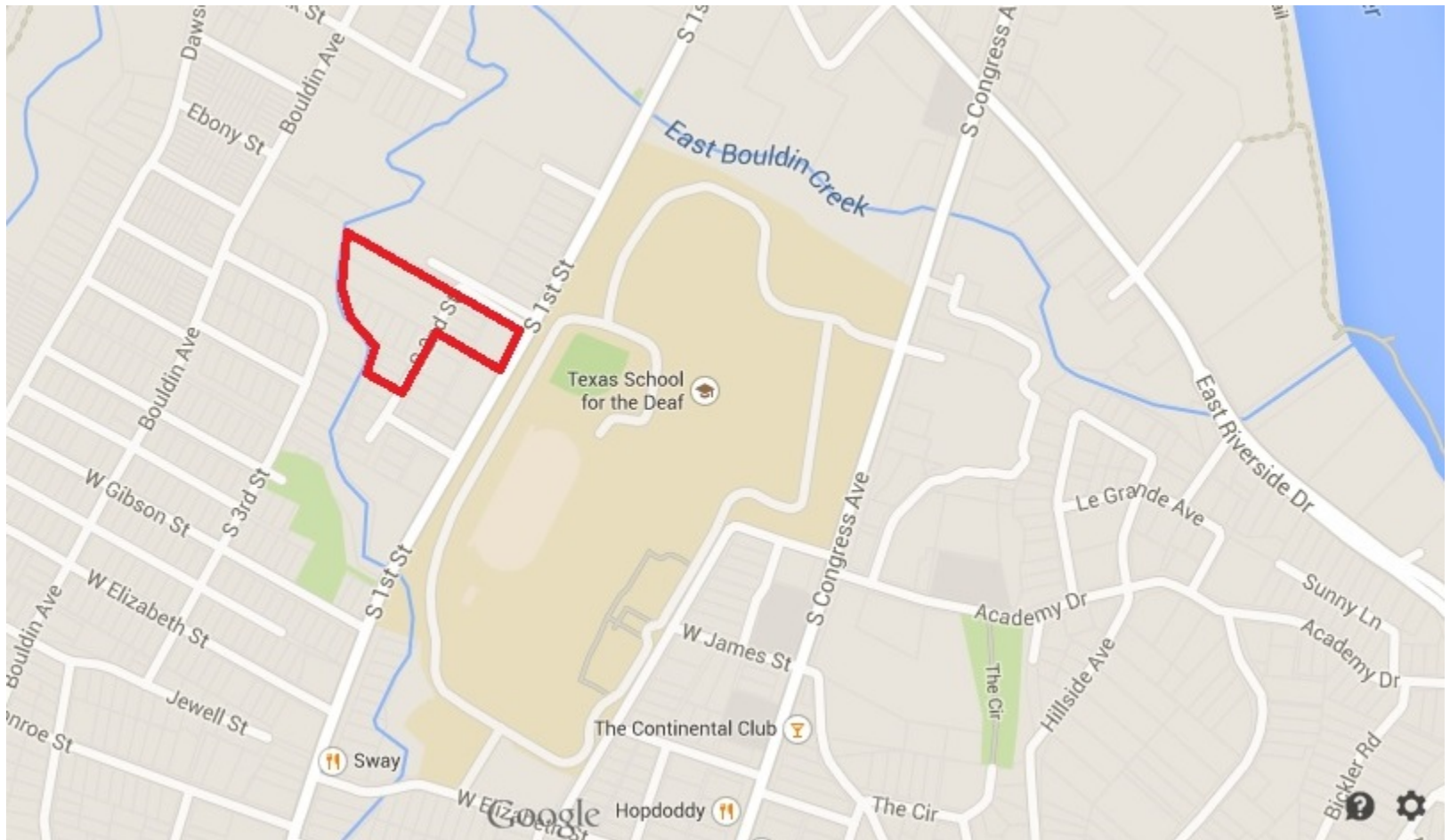


Bouldin Court Pedestrian Advisory Council

900 South 1st Street
May 4, 2015





LOCATION MAP





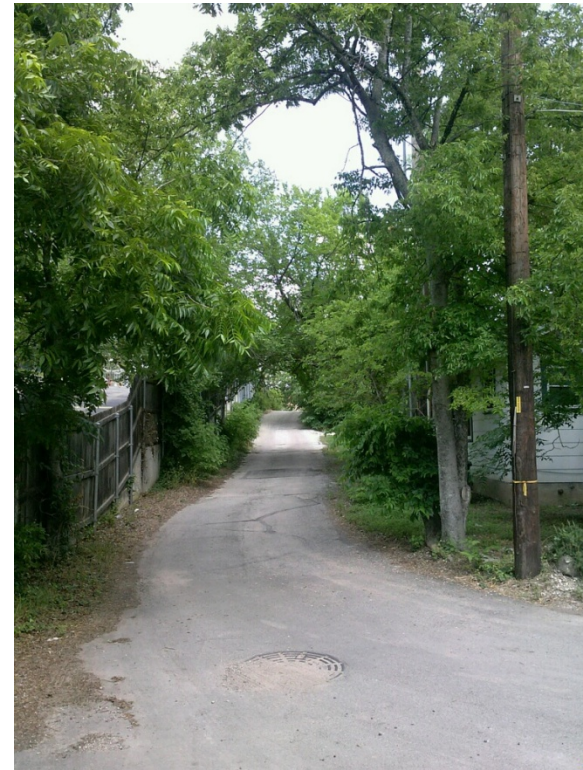
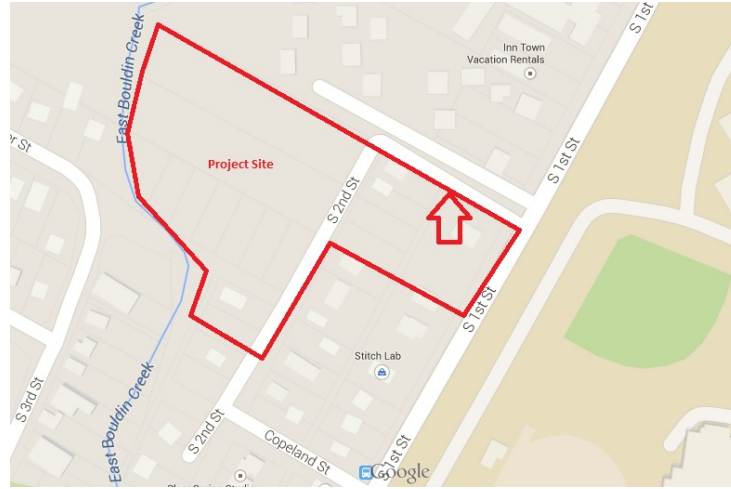
COPELAND STREET



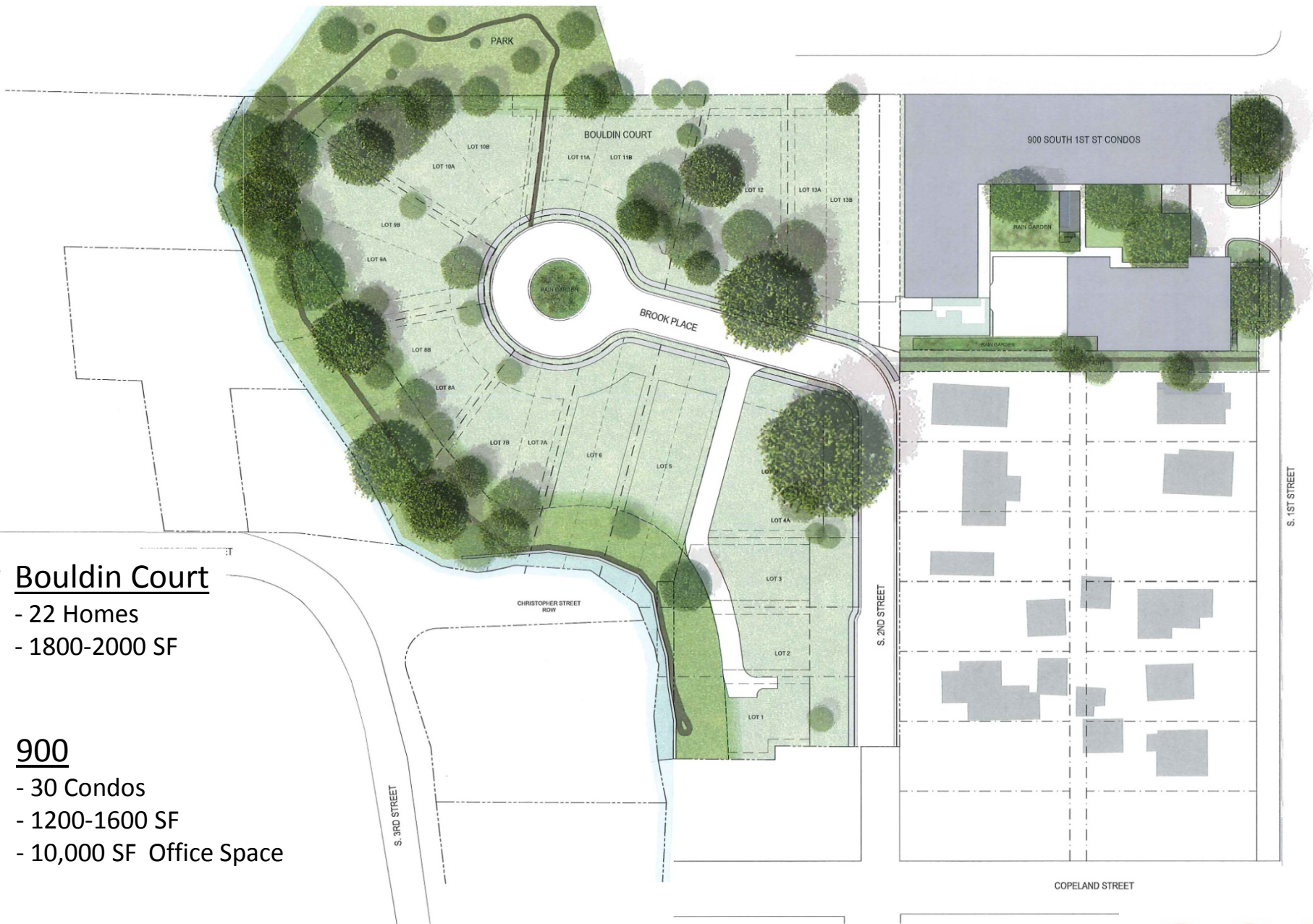


SOUTH 2ND STREET





UNNAMED STREET



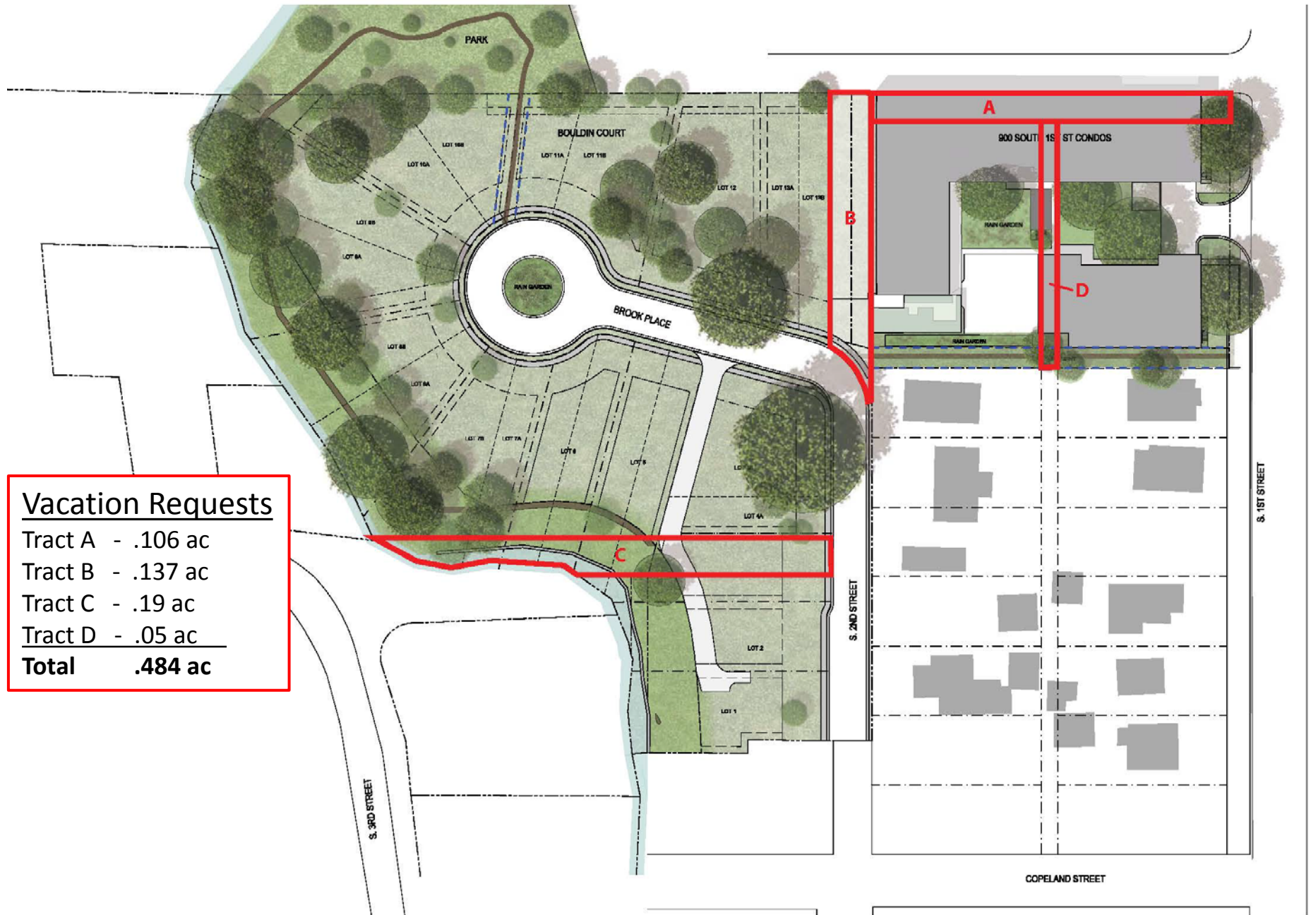
Bouldin Court

- 22 Homes
- 1800-2000 SF

900

- 30 Condos
- 1200-1600 SF
- 10,000 SF Office Space

BOULDIN COURT & 900 SOUTH 1ST ST



Vacation Requests

Tract A	- .106 ac
Tract B	- .137 ac
Tract C	- .19 ac
Tract D	- .05 ac
Total	.484 ac

Bouldin Creek Condominiums



Public Benefit for
Pedestrian Use



Public Benefit for Pedestrian Use

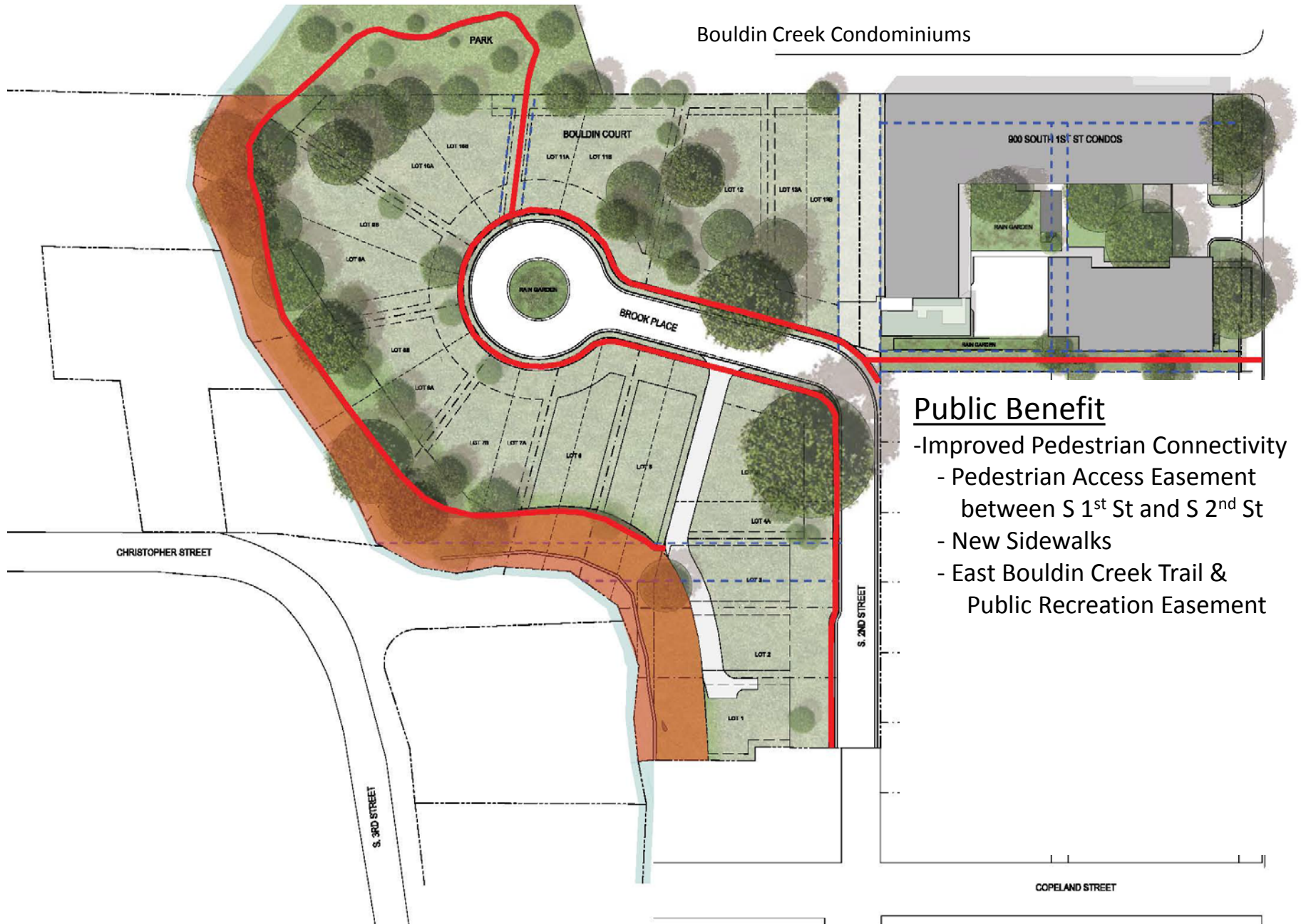
- Improved Ped./Bicycle Connectivity
- 15' Pedestrian Access Easement
between S 1st St and S 2nd St



Public Benefit for Pedestrian Use

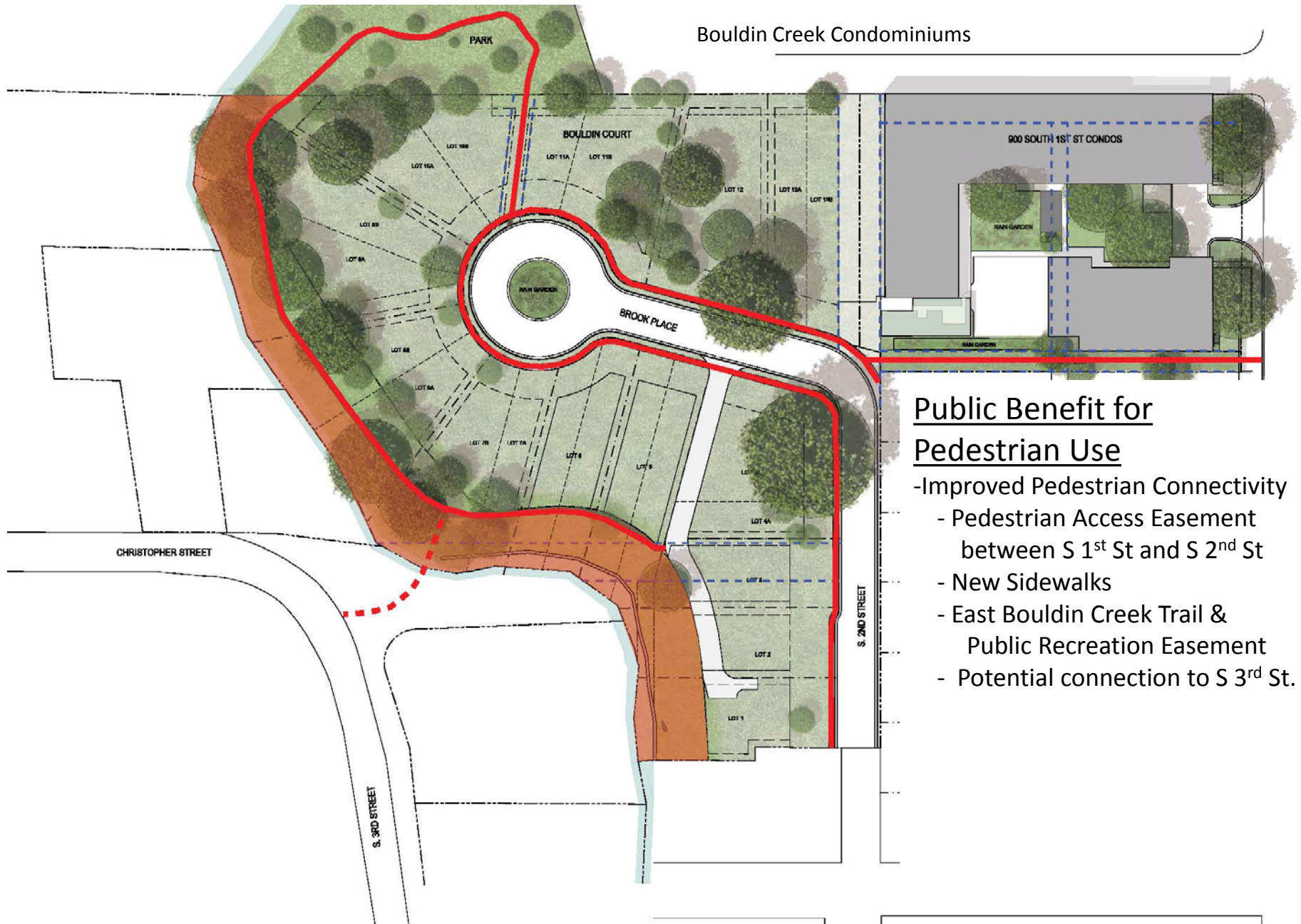
- Improved Pedestrian Connectivity
- Pedestrian Access Easement
between S 1st St and S 2nd St
- New Sidewalks

Bouldin Creek Condominiums



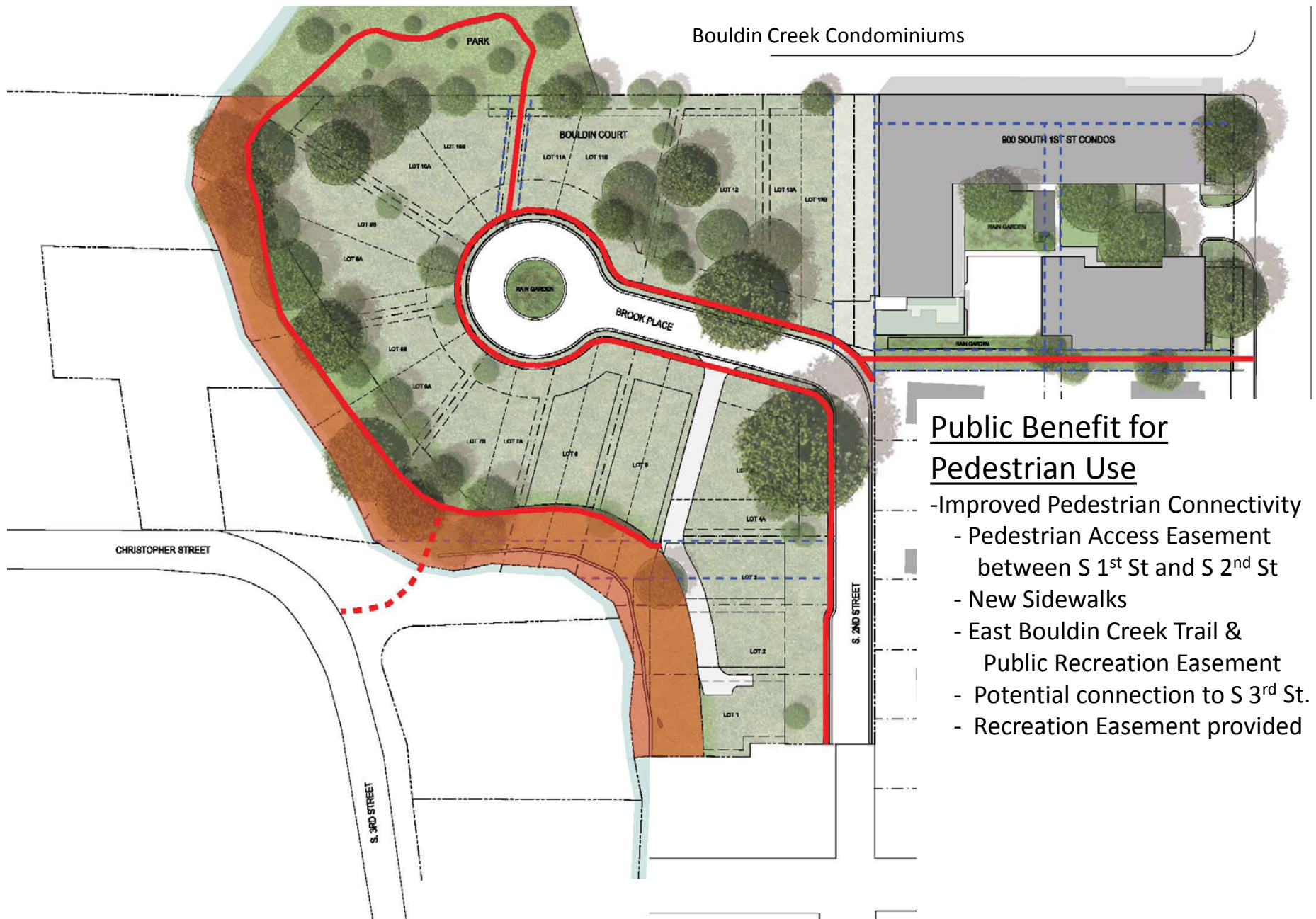
Public Benefit

- Improved Pedestrian Connectivity
 - Pedestrian Access Easement between S 1st St and S 2nd St
 - New Sidewalks
 - East Bouldin Creek Trail & Public Recreation Easement



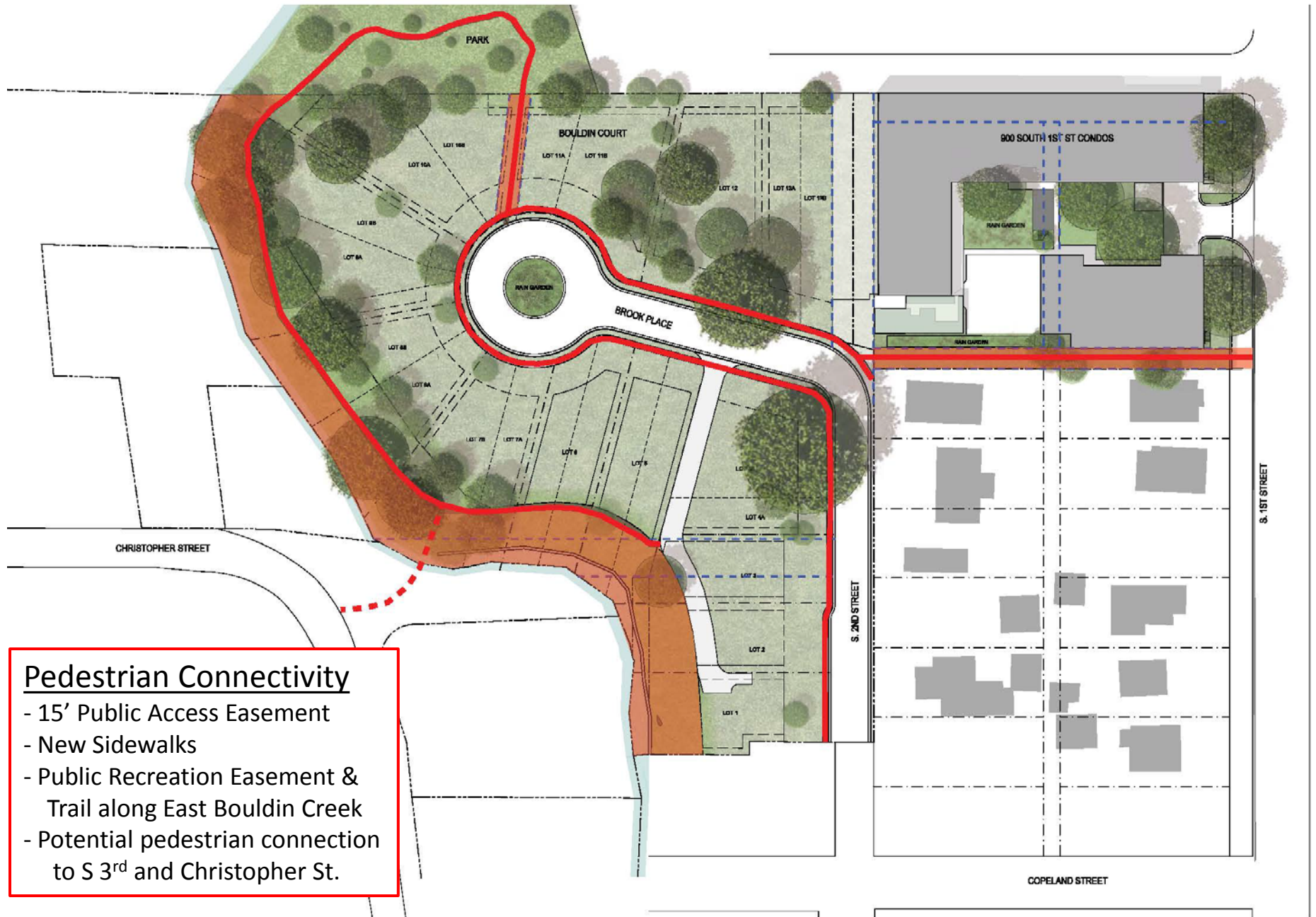
Public Benefit for Pedestrian Use

- Improved Pedestrian Connectivity
 - Pedestrian Access Easement between S 1st St and S 2nd St
- New Sidewalks
- East Bouldin Creek Trail & Public Recreation Easement
- Potential connection to S 3rd St.



Public Benefit for Pedestrian Use

- Improved Pedestrian Connectivity
 - Pedestrian Access Easement between S 1st St and S 2nd St
 - New Sidewalks
 - East Bouldin Creek Trail & Public Recreation Easement
 - Potential connection to S 3rd St.
 - Recreation Easement provided



Pedestrian Connectivity

- 15' Public Access Easement
- New Sidewalks
- Public Recreation Easement & Trail along East Bouldin Creek
- Potential pedestrian connection to S 3rd and Christopher St.