

Lower Buttermilk Creek Bank Stabilization

(CIP 58418.064)

Expedited Project Delivery

Item 6b



**Charlie Kaough, P.E.
Watershed Protection Department
Environmental Board Meeting 05/20/2015**

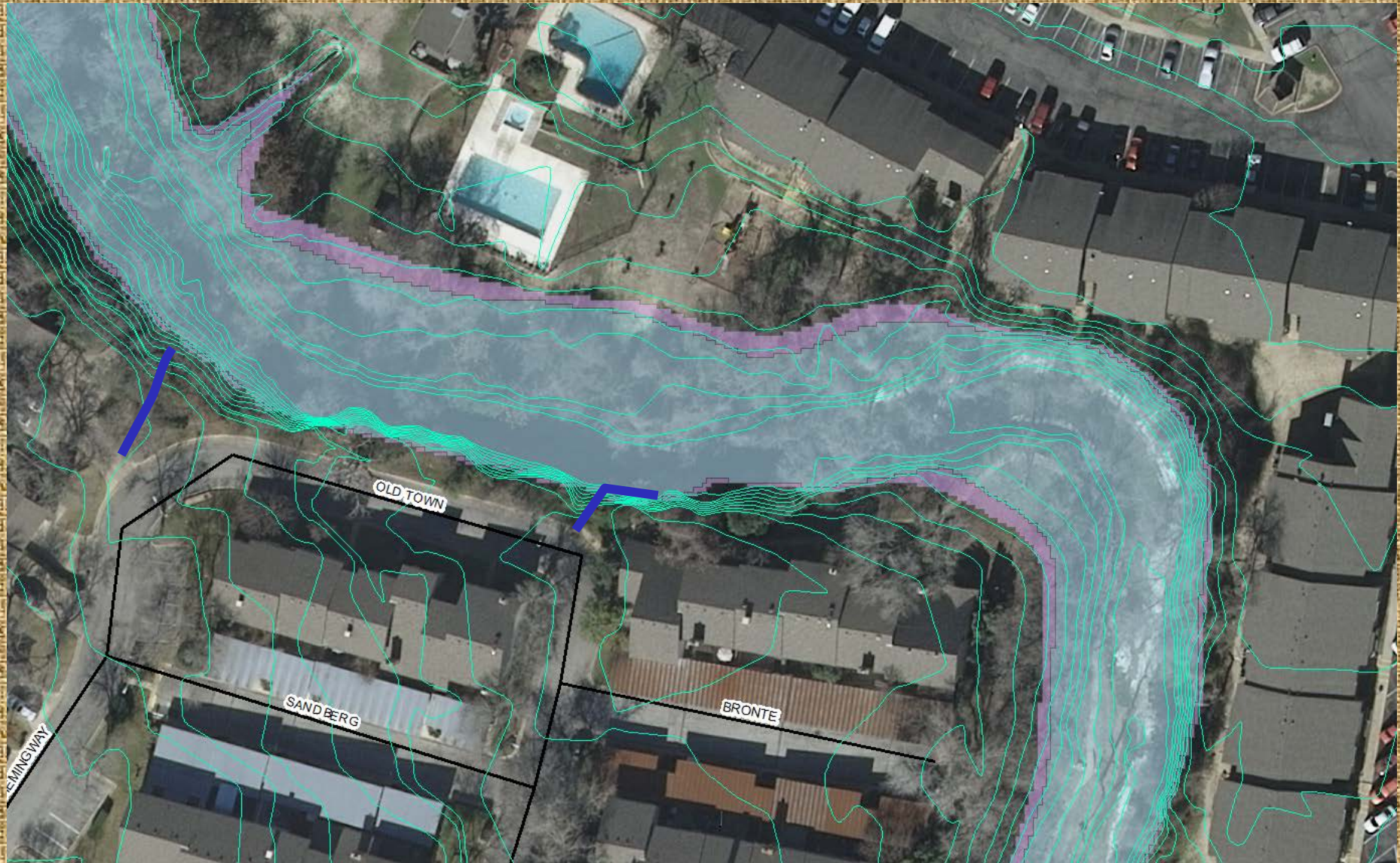
LOWER BUTTERMILK CREEK

PROPOSED PROJECT MAP



LOWER BUTTERMILK CREEK

PROPOSED PROJECT MAP



BUTTERMILK CREEK

BRONTE DRIVE

PHOTO 13. REACH 7, X-SECT. 5. Close-up of left bank vertical cut. Note the exposed tree roots which characterize the entire reach along the eroded bank.



PHOTO 12. REACH 7, X-SECT. 5. Reach showing its massive 200-foot long, 20+ foot high left bank vertical cut. Right bank vegetation adequate.



1997

LOWER BUTTERMILK CREEK

BRONTE DRIVE



2007

2011



LOWER BUTTERMILK CREEK

BRONTE DRIVE



2013

June 2014

(Investigated Field Operations Assistance)



LOWER BUTTERMILK CREEK

BRONTE DRIVE



March 2015

(Morgan goes on TV)

November 2014



LOWER BUTTERMILK CREEK

BRONTE DRIVE

Old Town Condos HOA Repairs 2015



Lower Buttermilk Creek Bank Stabilization

Previous Project Implementation History & Schedule

- **FY 2011** – Added to 5 –year CIP plan
- **FY 2012** – Presentation to HOA on anticipated project schedule
- **FY 2015** – Preliminary Engineering funding available
- **FY 2016** - Design & Construction funding available
- **FY 2017** - Construction

Lower Buttermilk Creek Bank Stabilization

- **Accelerated erosive conditions have prompted the need for an expedited project schedule**

Proposed Expedited Project Implementation Process

- Accelerate schedule by 9-12 months
- Initiate Emergency Affidavit (*requires Director approval*)
- Proceed directly to design (*without PER*)
- Bid Process under Emergency Contract (*select 3 contractors*)
- Commence Construction

Lower Buttermilk Creek Bank Stabilization

Proposed Project Implementation Schedule

- **2015**

June – October -> Design (4-6 months from NTP)

October – December -> Permit/Bid

- **2016**

January – June -> Construction