



Austin/Travis County Health and Human Services Department

Our role in public health is to:

PROMOTE community-wide wellness, preparedness, & self-sufficiency;

PREVENT illness, injury, & disease; and

PROTECT the community from infectious diseases, environmental hazards, & epidemics



Health Disparities in Austin/Travis County

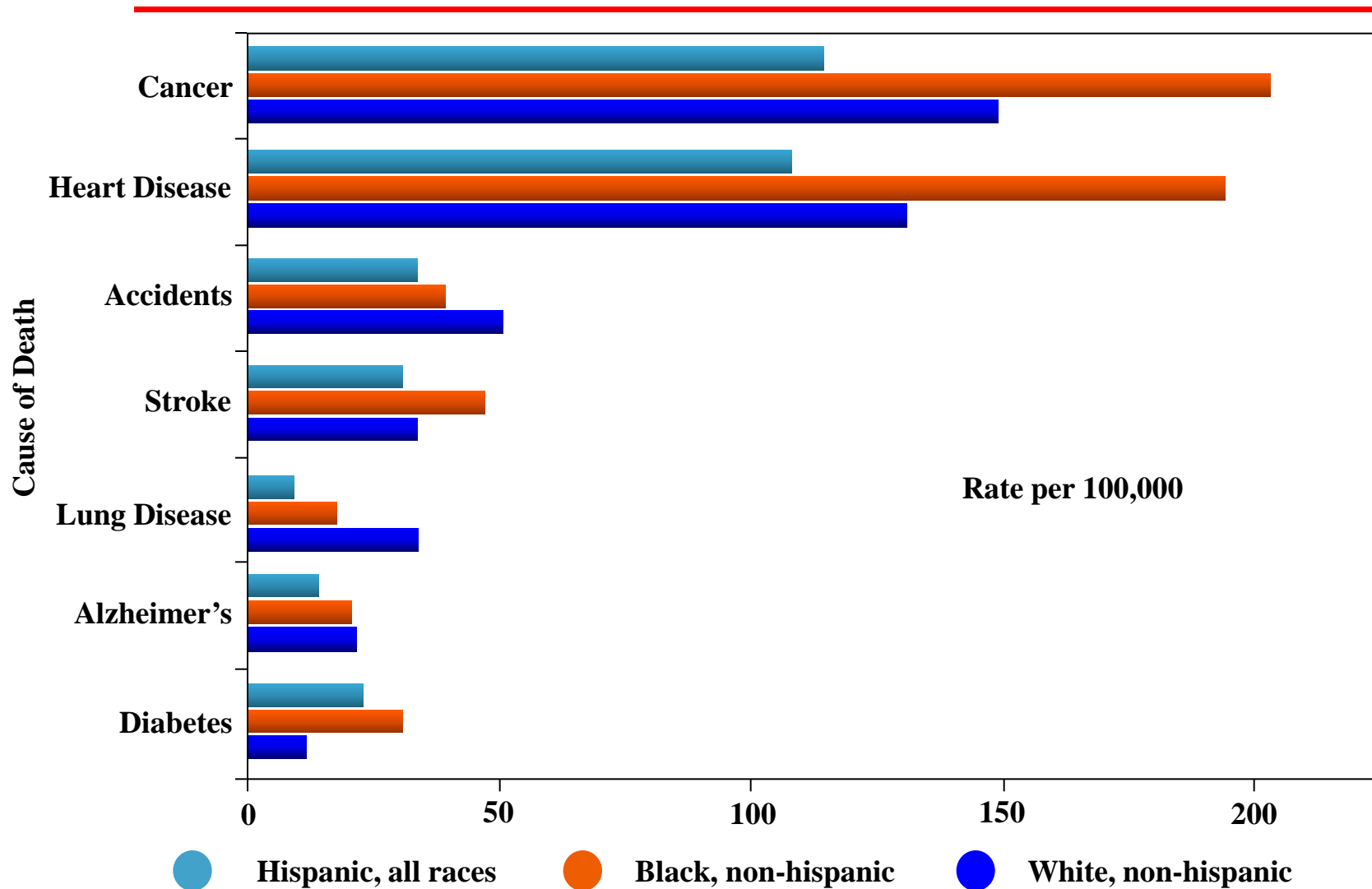
Health and Human Services Committee

Shannon Jones, HHSD Director

Dr. Philip Huang, Health Authority

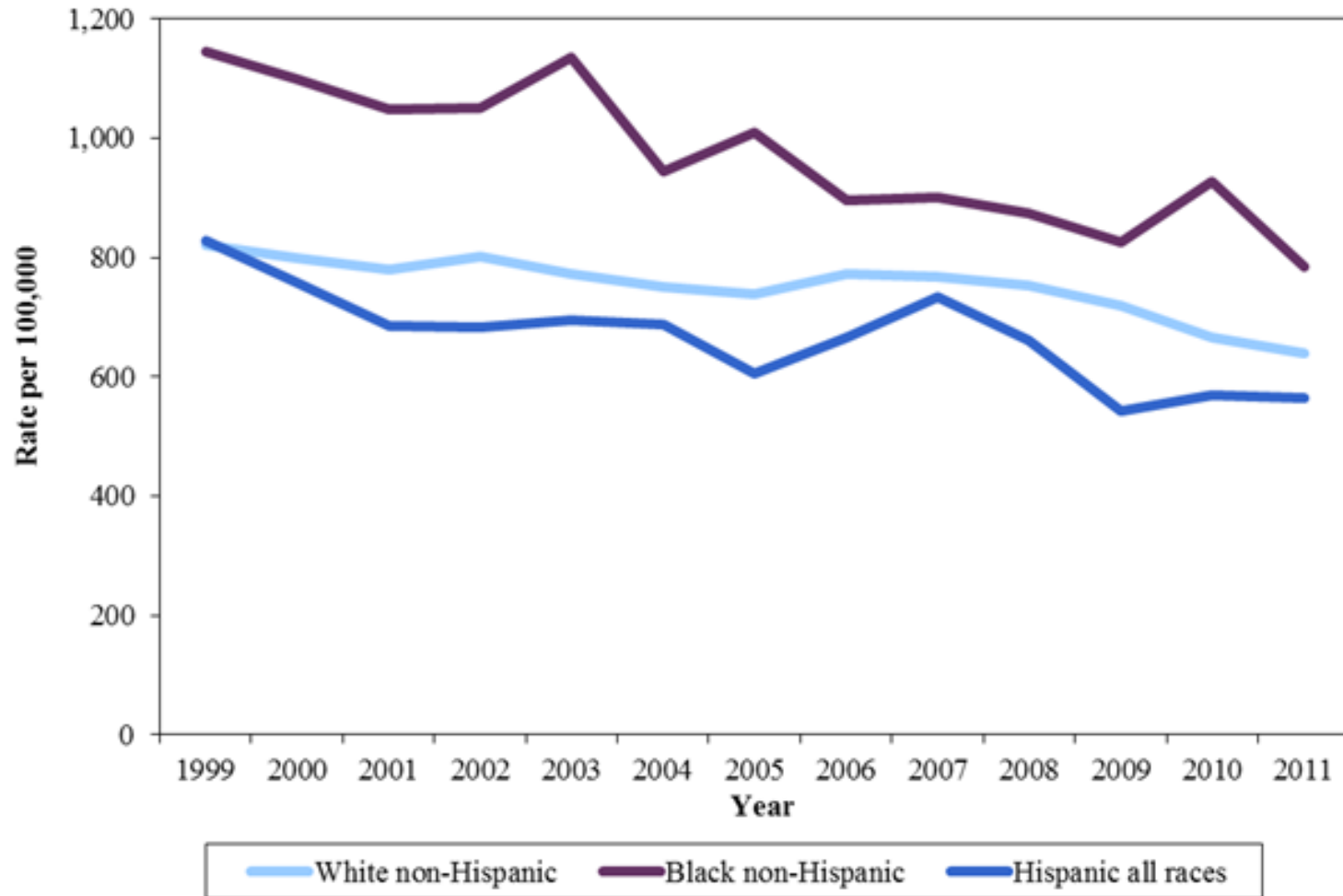
June 1, 2015

Age-adjusted Mortality Rates for Seven Leading Causes of Death by Race/Ethnicity, Travis County, 2009-2011



Data Source: Center for Health Statistics, Texas Department of State Health Services

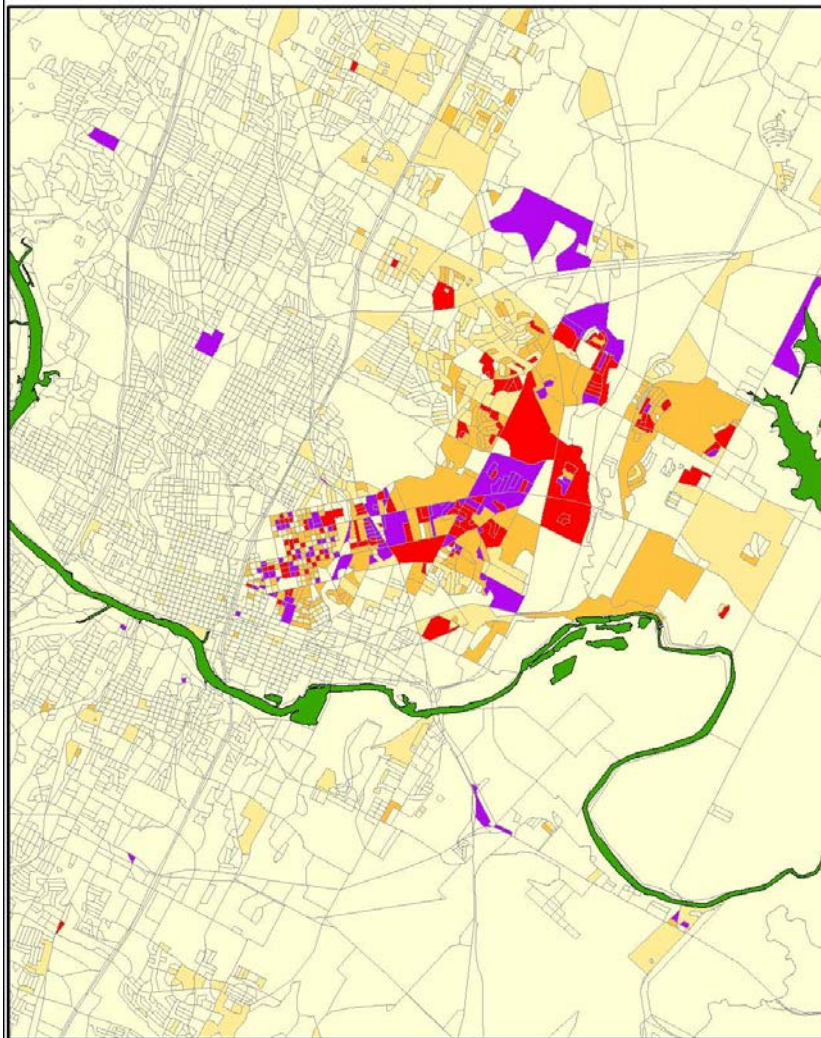
Age-adjusted Mortality Rates by Race/Ethnicity, Travis County, 1999-2011



Data Source: Center for Health Statistics, Texas Department of State Health Services

Changing African Americans Landscape – Urban Core

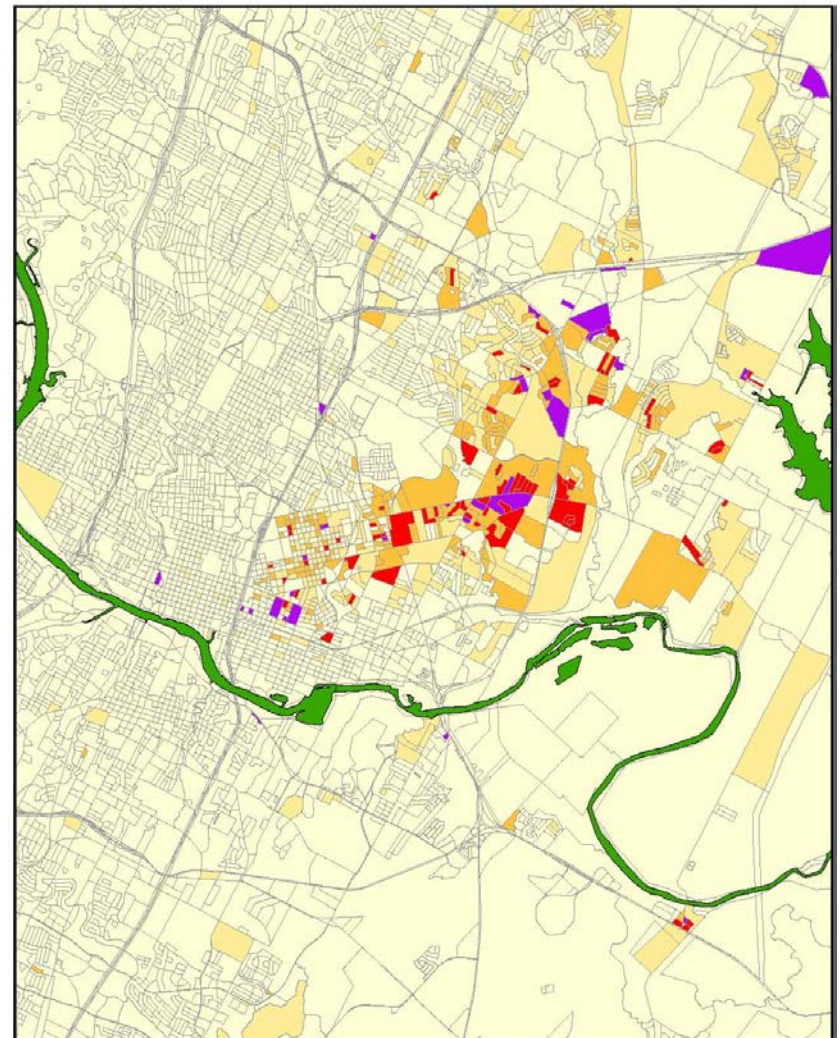
African Americans Populations Concentrations, 2000 and 2010



Census 2000 Data
Census Blocks

Percentage of the
Total Population
that is
African American

Less than 20%
20% to 40%
40% to 60%
60% to 80%
80% Plus



Census 2010 Data
Census Blocks

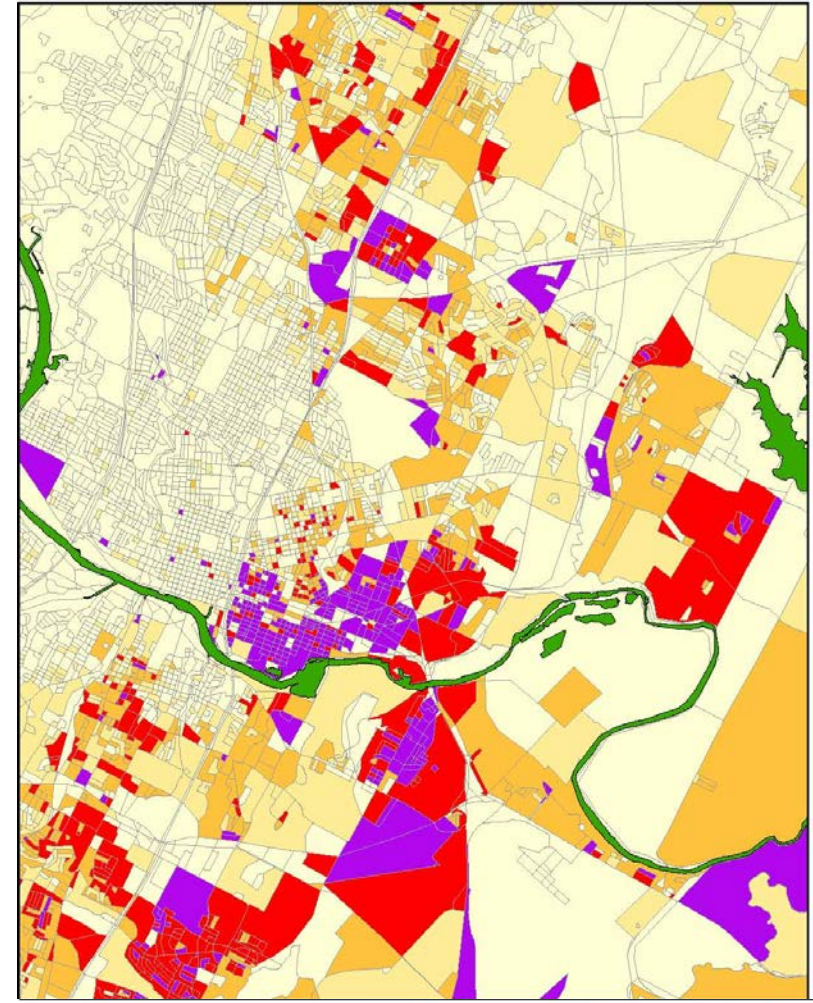
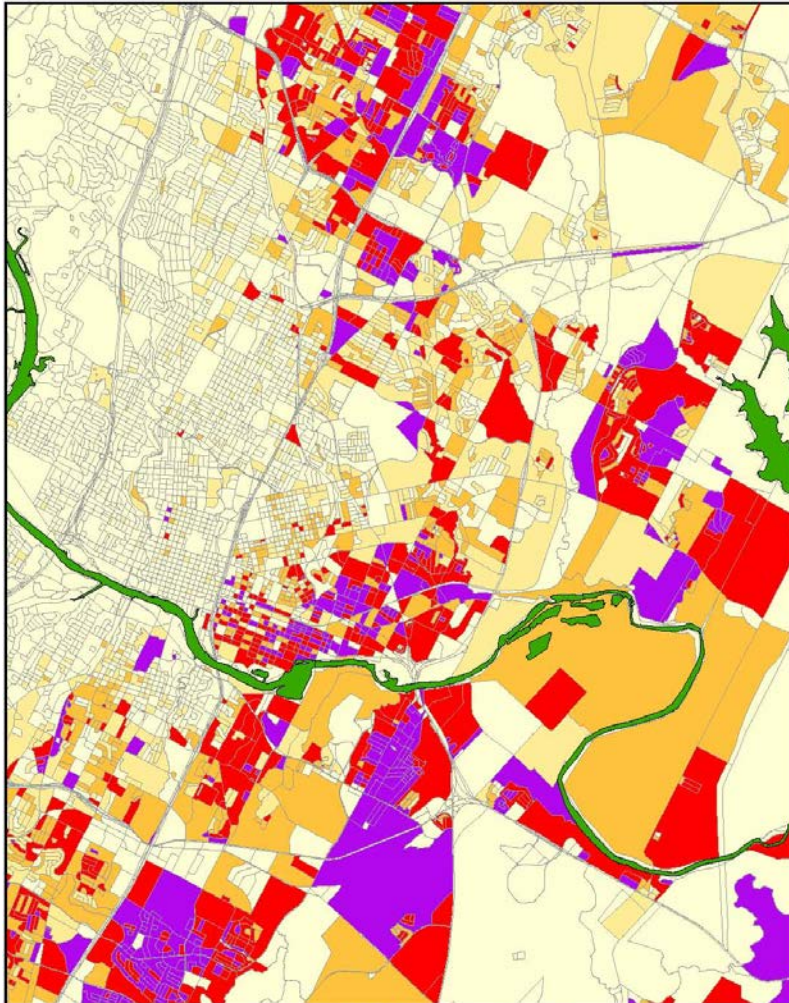
Percentage of the
Total Population
that is
African American

Less than 20%
20% to 40%
40% to 60%
60% to 80%
80% Plus

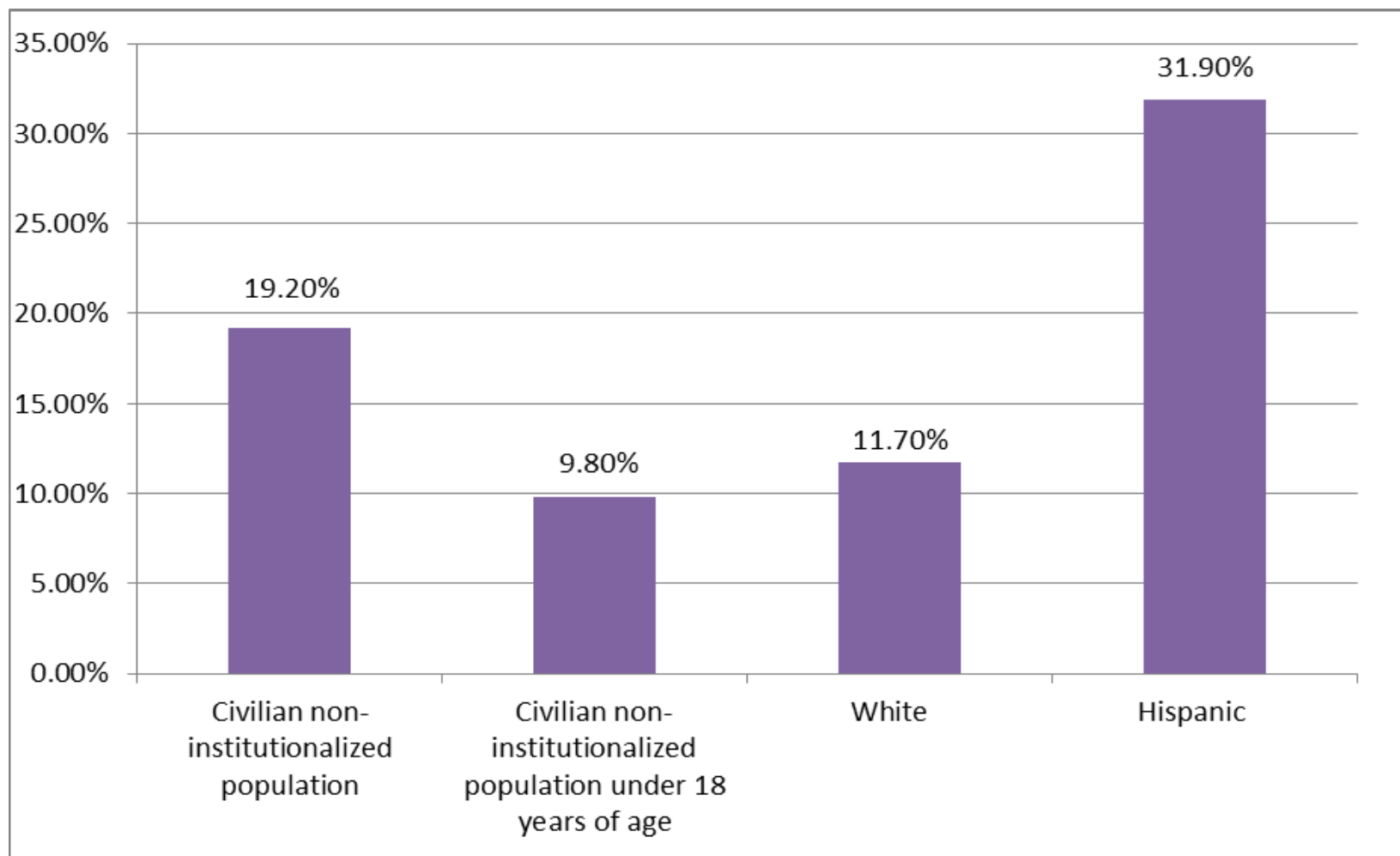
Map prepared by Ryan Robinson, City Demographer, Department of Planning, City of Austin, February 2011.

Changing Hispanic Landscape in Austin

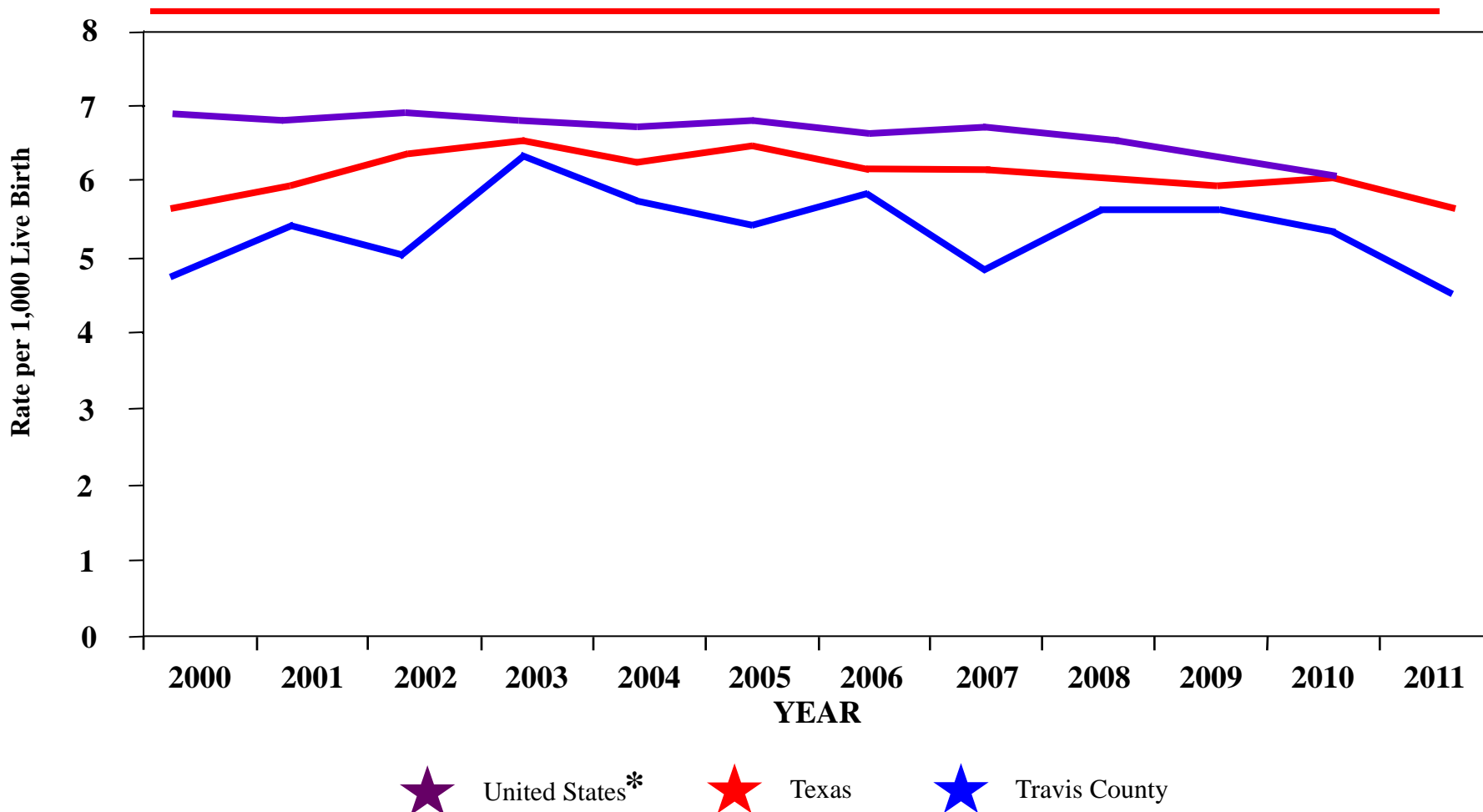
Hispanic - - Latino Populations Concentrations, 2000 and 2010



Percent Uninsured, Travis County, 2012

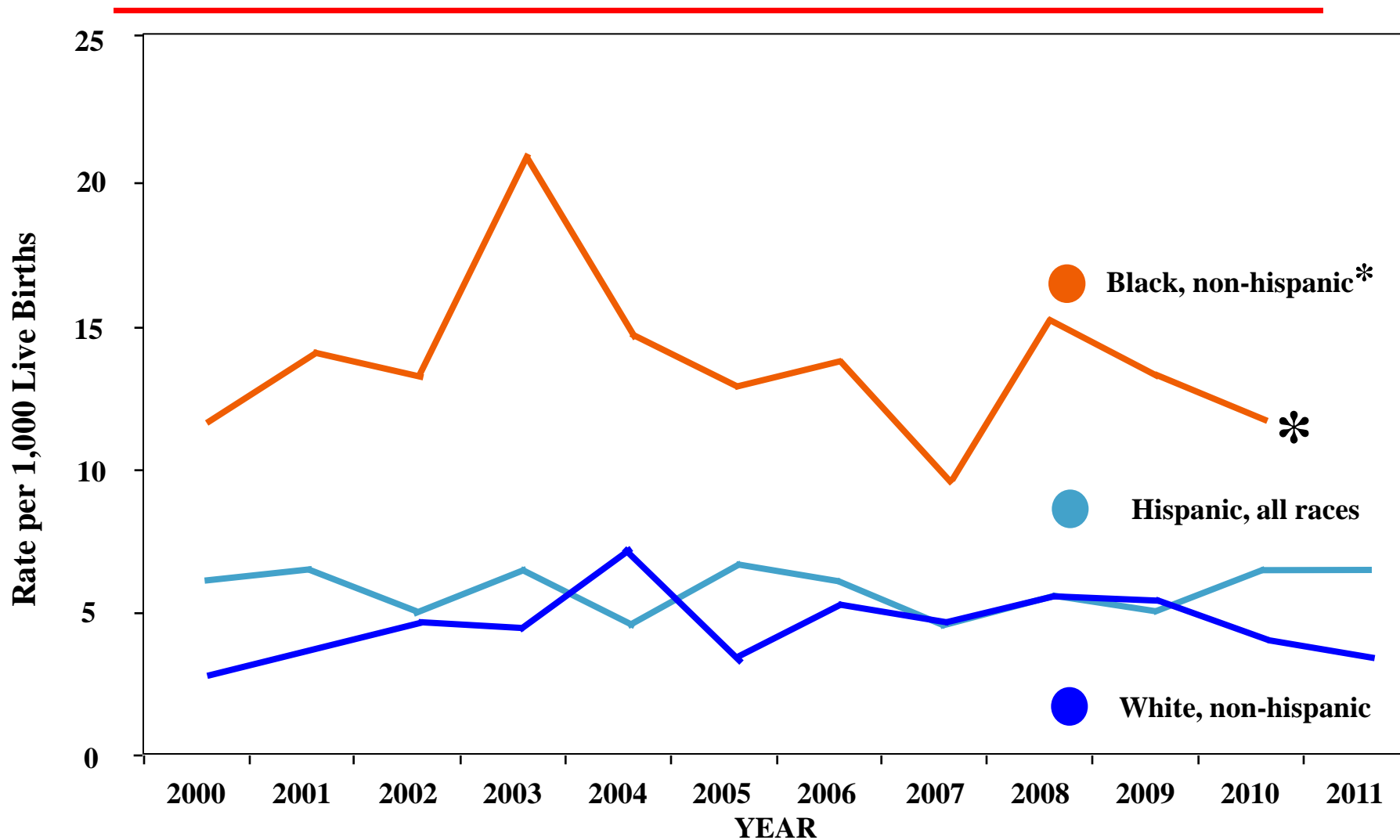


Infant Mortality Rates for Travis County, Texas, and the United States, 2000-2011



Data Source: Center for Health Statistics, Texas Department of State Health Services
* Infant mortality rates for 2011 have not been published at time of this report

Infant Mortality Rates by Race/Ethnicity, Travis County, 2000-2011

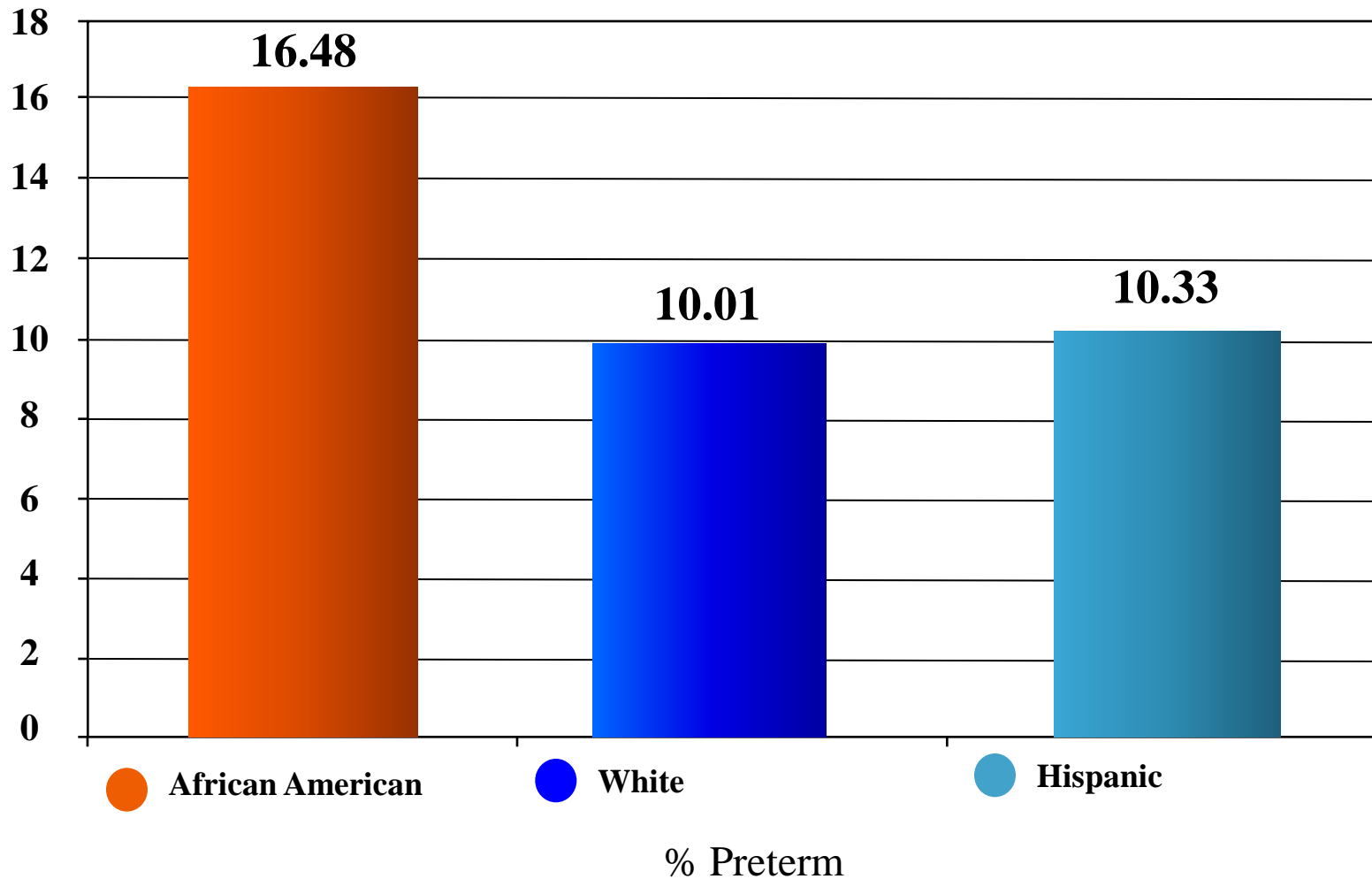


* Due to low number of infant deaths, rates were not calculated for 2011

Data Source: Center for Health Statistics, Texas Department of State Health Services

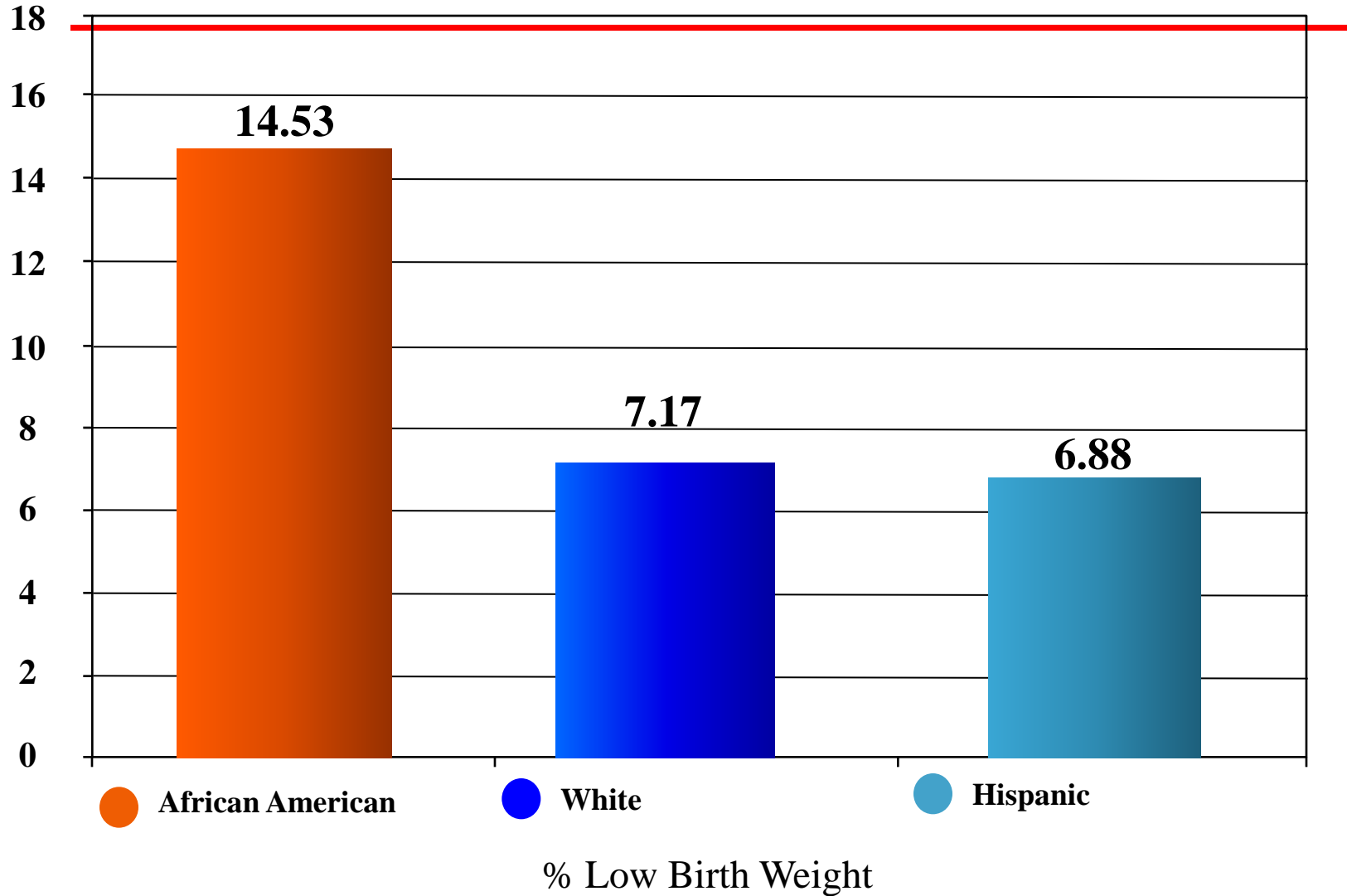


% Preterm in Travis County by race/ethnicity, 2012





% Low Birth Weight in Travis County by race/ethnicity, 2012



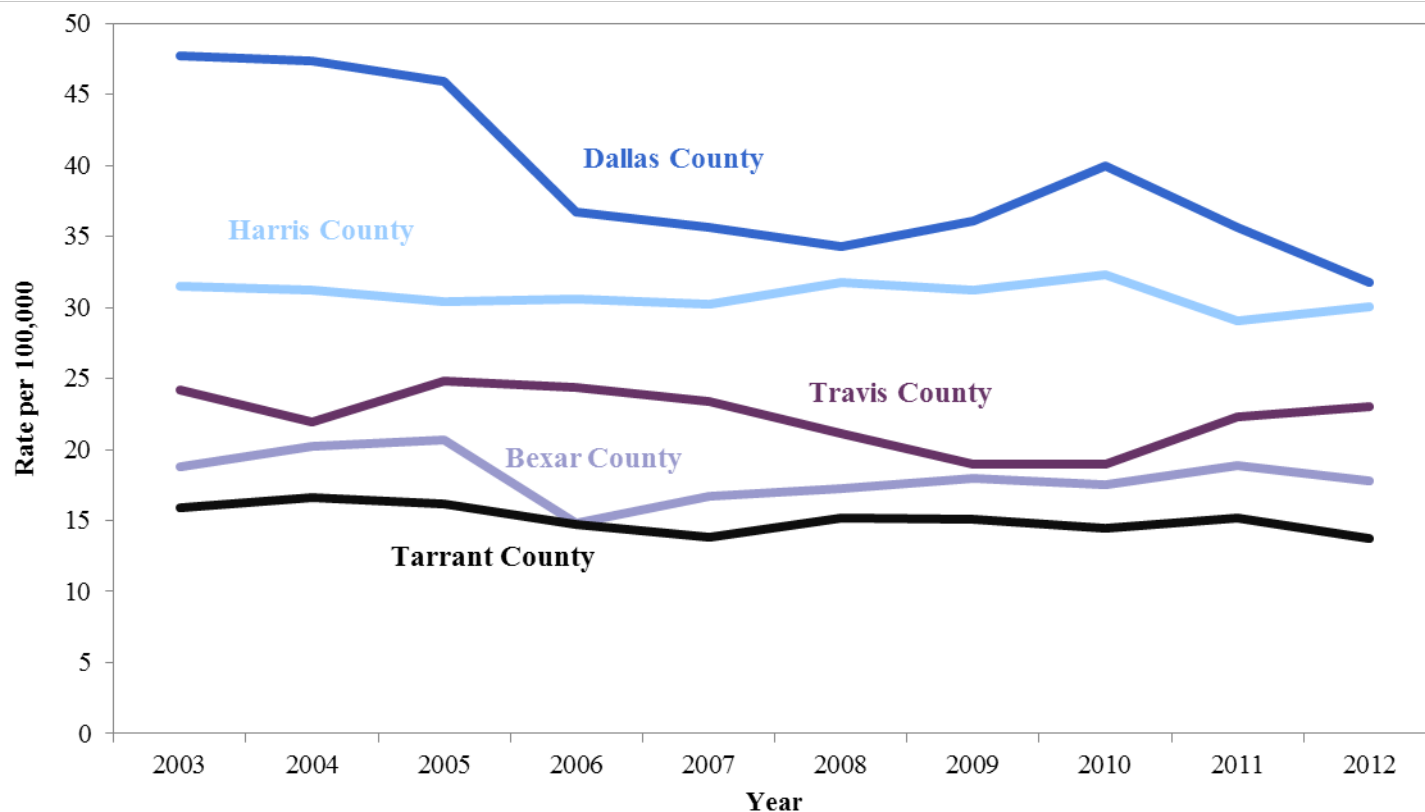
Teen Births

Teen Births by Race/Ethnicity, Travis County, 2010 ²			
Race	Mother's Age		
	14 & Under	15-17	18-19
White, Non-Hispanic	1	40	110
Black, Non-Hispanic	1	49	126
Hispanic	27	381	622
Other	0	1	4
All Races	29	471	862

Current Rate: In Travis County, the 2010 birth rate for adolescent girls (reported only for girls ages 15 – 19) was 51.1 per 1,000 (1,362 births 10-19) well above the national rate was 34.2 as reported by the CDC's National Center for Health Statistics. 23% of teen births were repeat births. Travis County reported 1362 births to girls 10-19 in 2010:

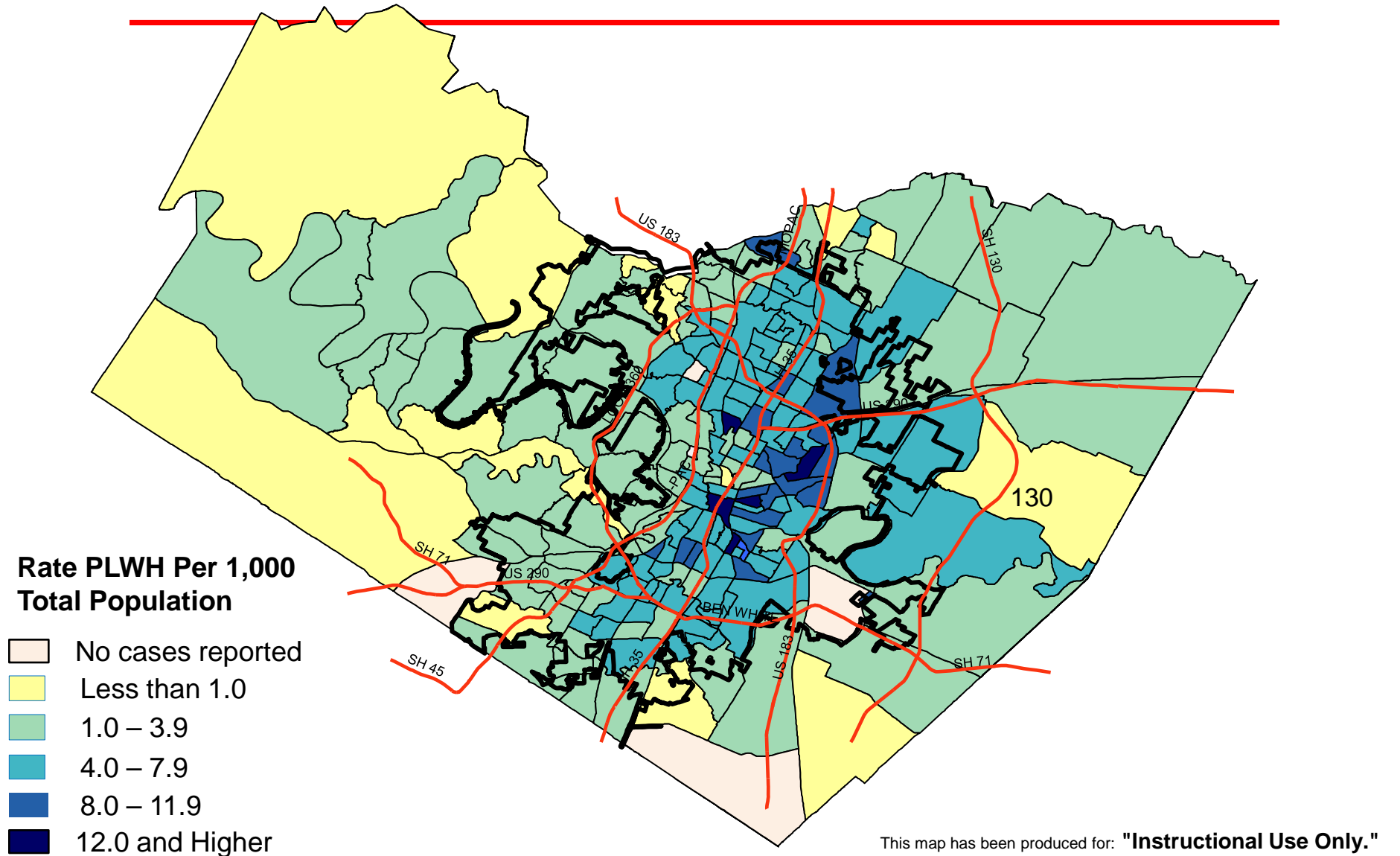
Note Texas Department of State Health Services, 2011

Incidence Rates for New HIV Infection Diagnoses, Bexar, Dallas, Harris, Tarrant and Travis Counties, 2003-2012

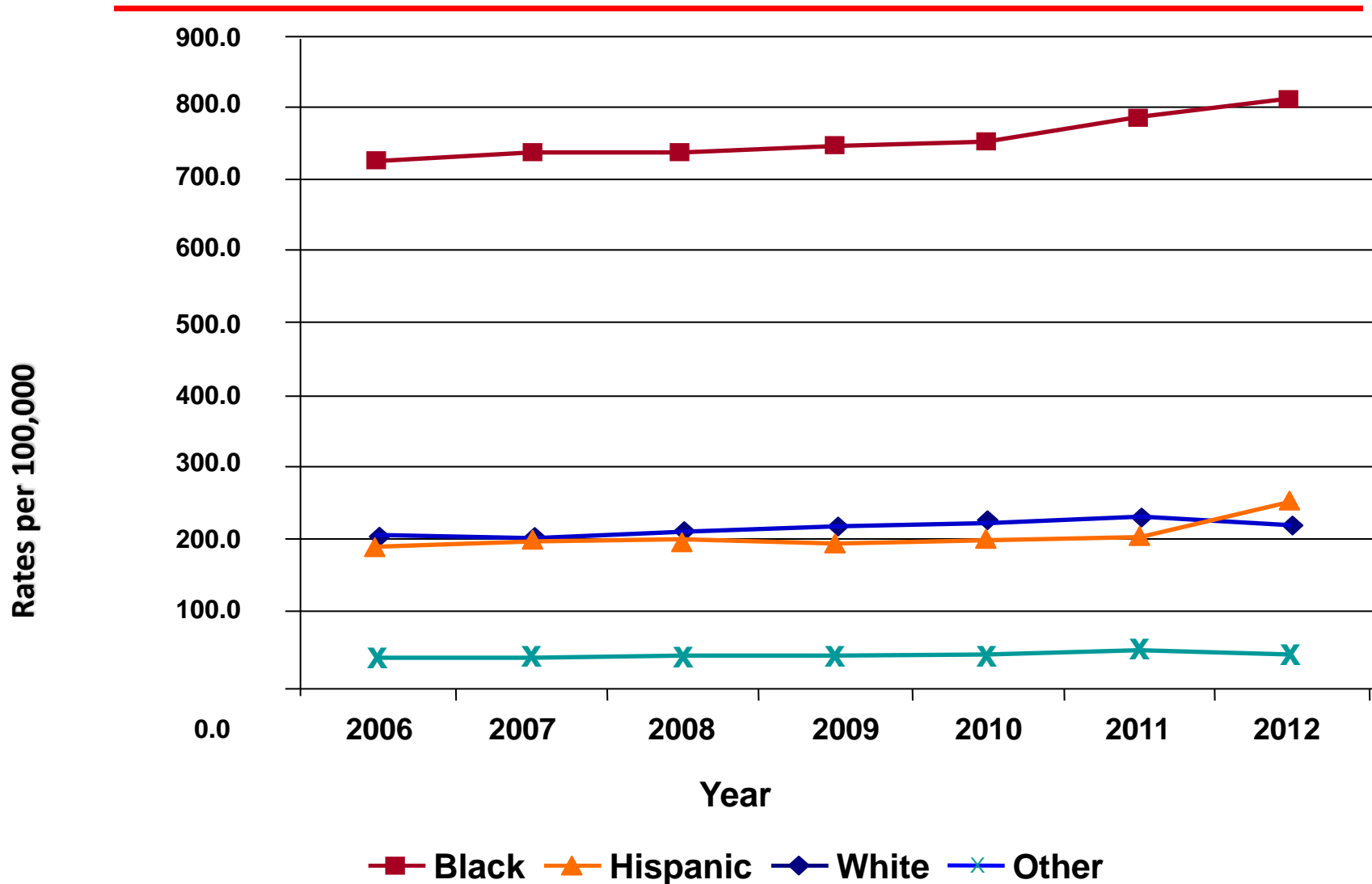


Data Source: TB/HIV/STD Epidemiology and Surveillance Branch, Texas Department of State Health Services

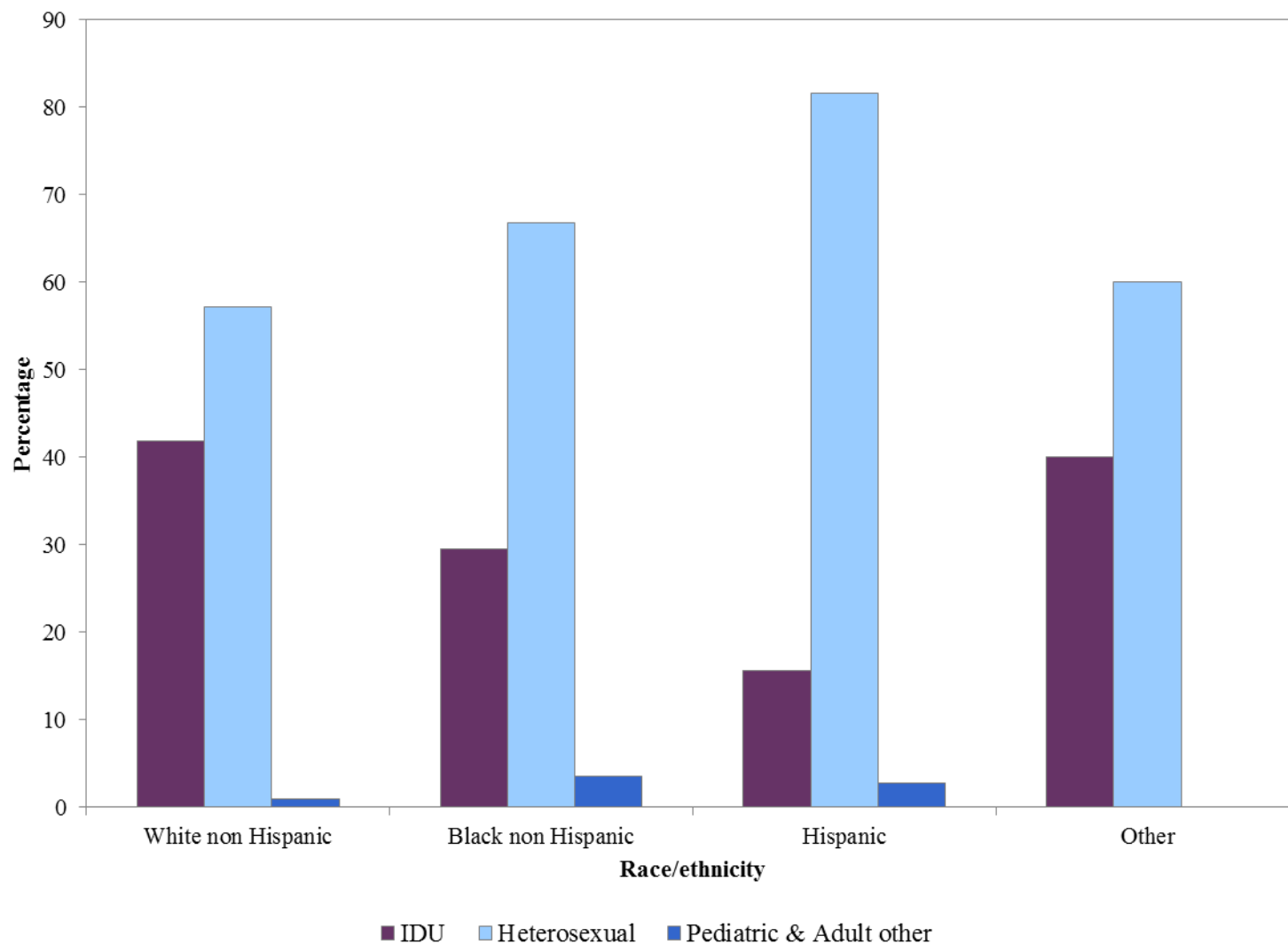
People Living with HIV in 2013 by Census Tract in Travis County



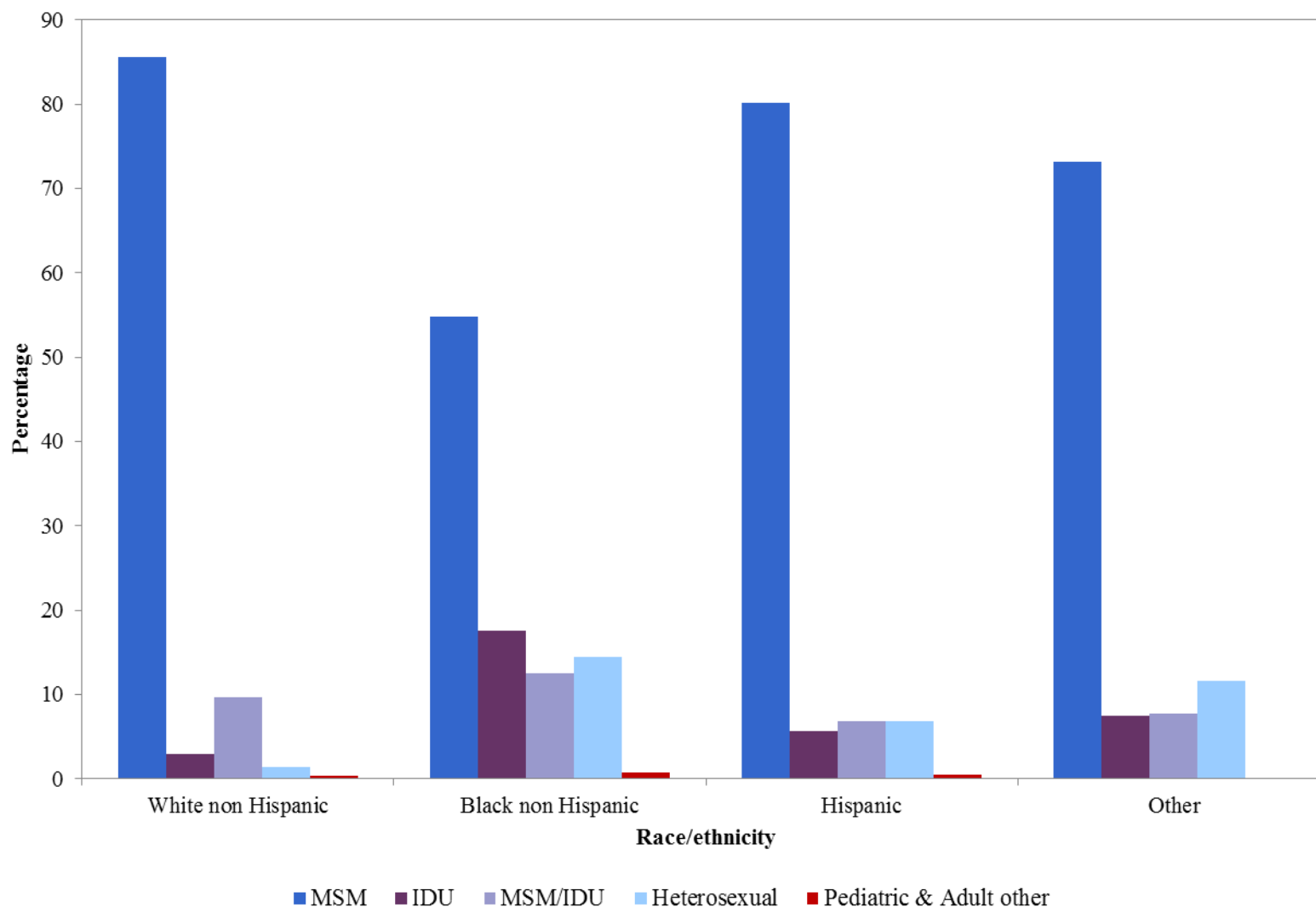
Prevalence Rates for Persons Living with HIV/AIDS by Race/Ethnicity, Austin TGA, 2006 - 2012



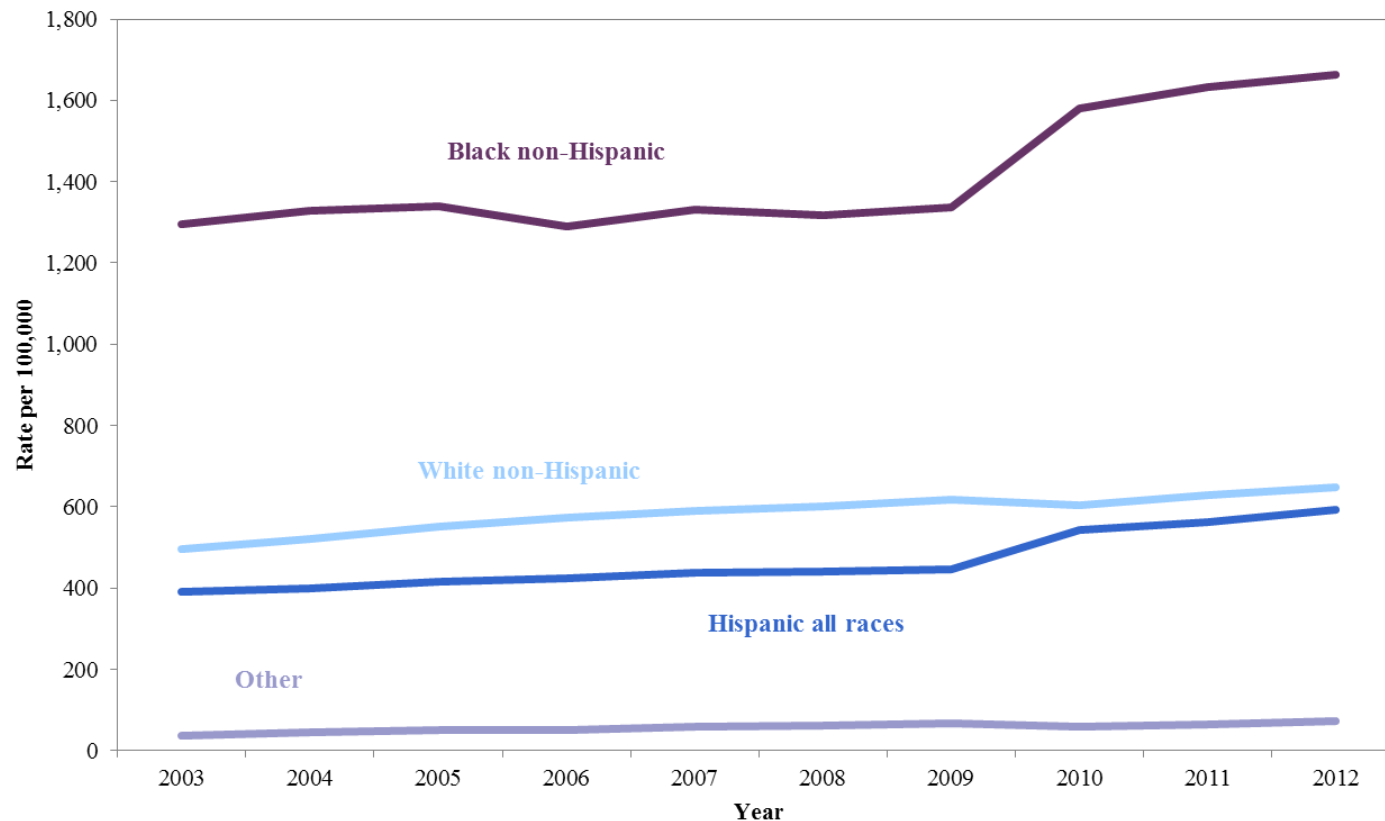
Females Living with HIV/AIDS by Mode of Exposure, Travis County 2012



Males Living with HIV/AIDS by Mode of Exposure, Travis County 2012

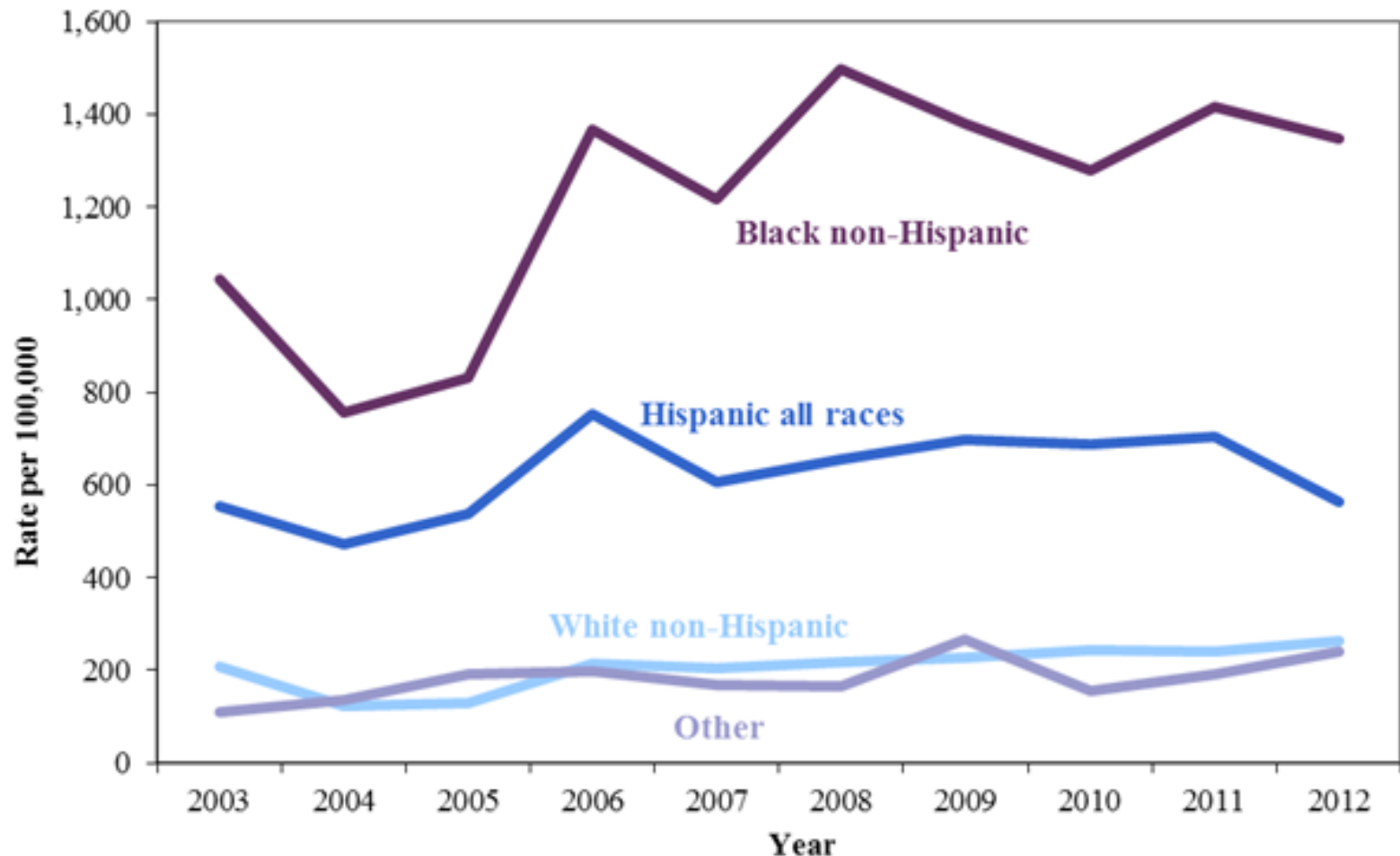


Prevalence Rate per 100,000 Population of Male Persons Living with HIV, Travis County, 2003-2012



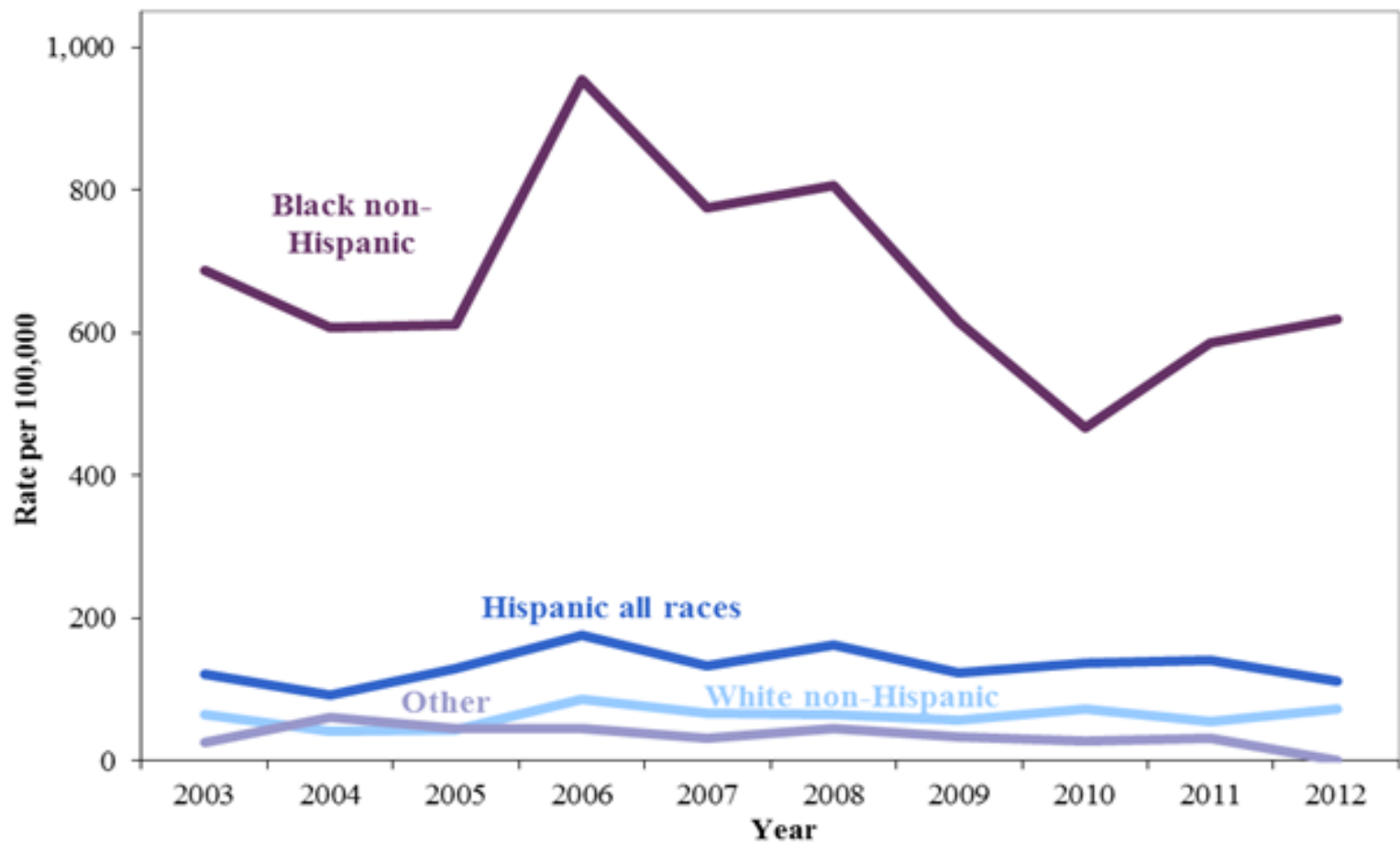
Data Source: TB/HIV/STD Epidemiology and Surveillance Branch, Texas Department of State Health Services

Chlamydia Incidence Rate by Race/Ethnicity, Travis County, 2003-2012



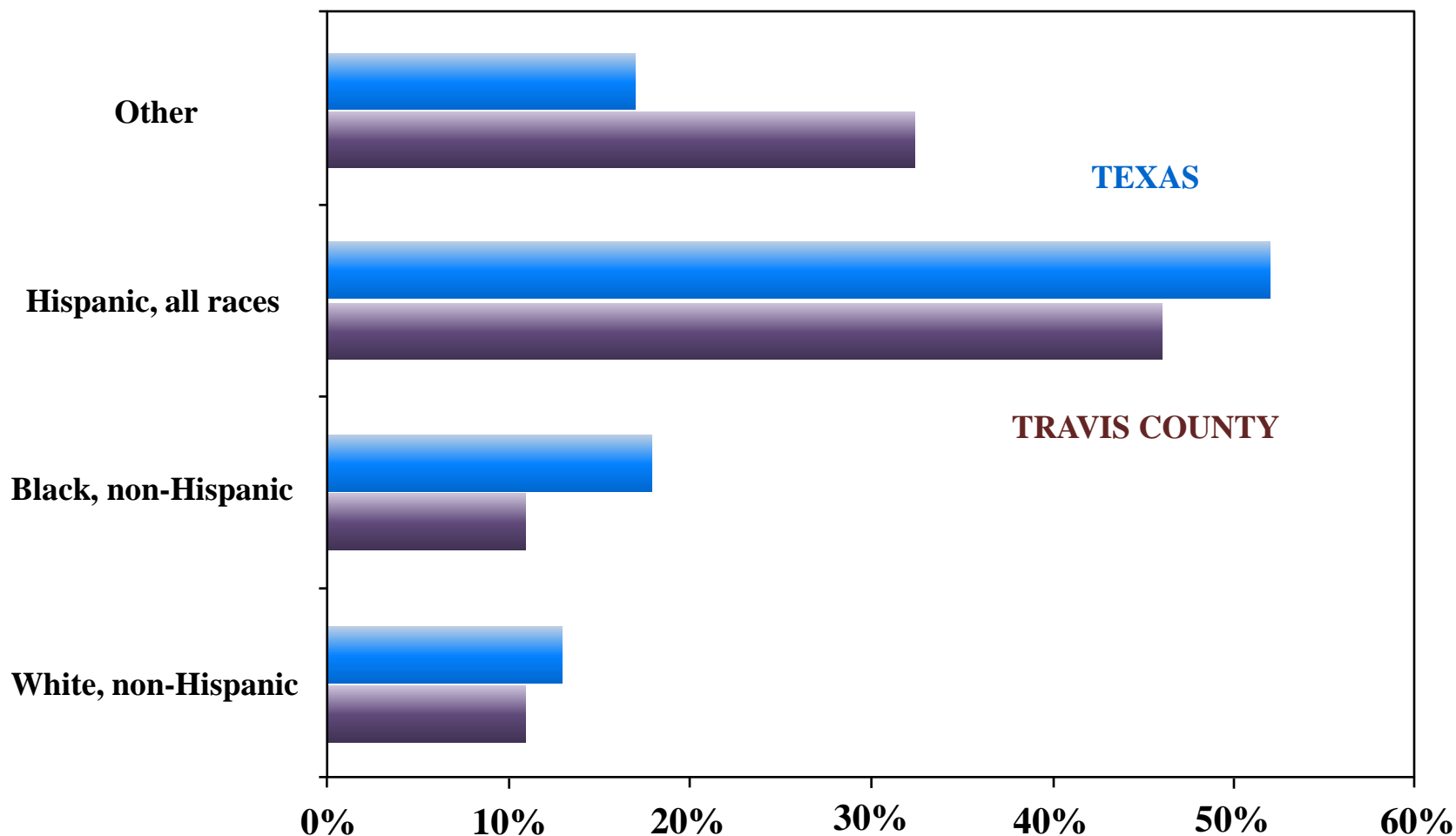
Data Source: TB/HIV/STD Epidemiology and Surveillance Branch, Texas Department of State Health Services

Gonorrhea Incidence Rates by Race/Ethnicity, Travis County, 2002-2012

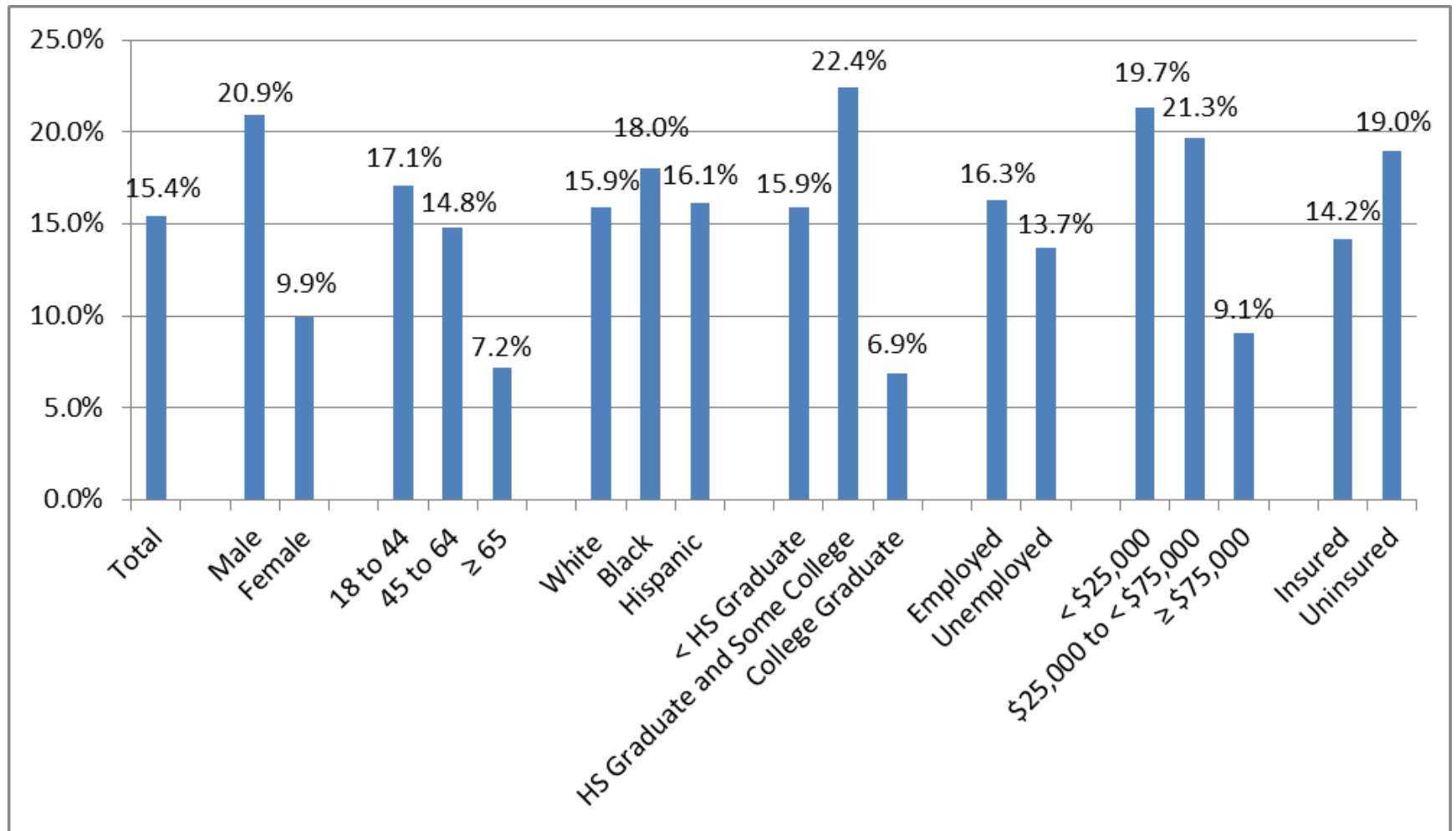


Data Source: TB/HIV/STD Epidemiology and Surveillance Branch, Texas Department of State Health Services

Tuberculosis Cases by Race/Ethnicity, Travis County and Texas, 2012

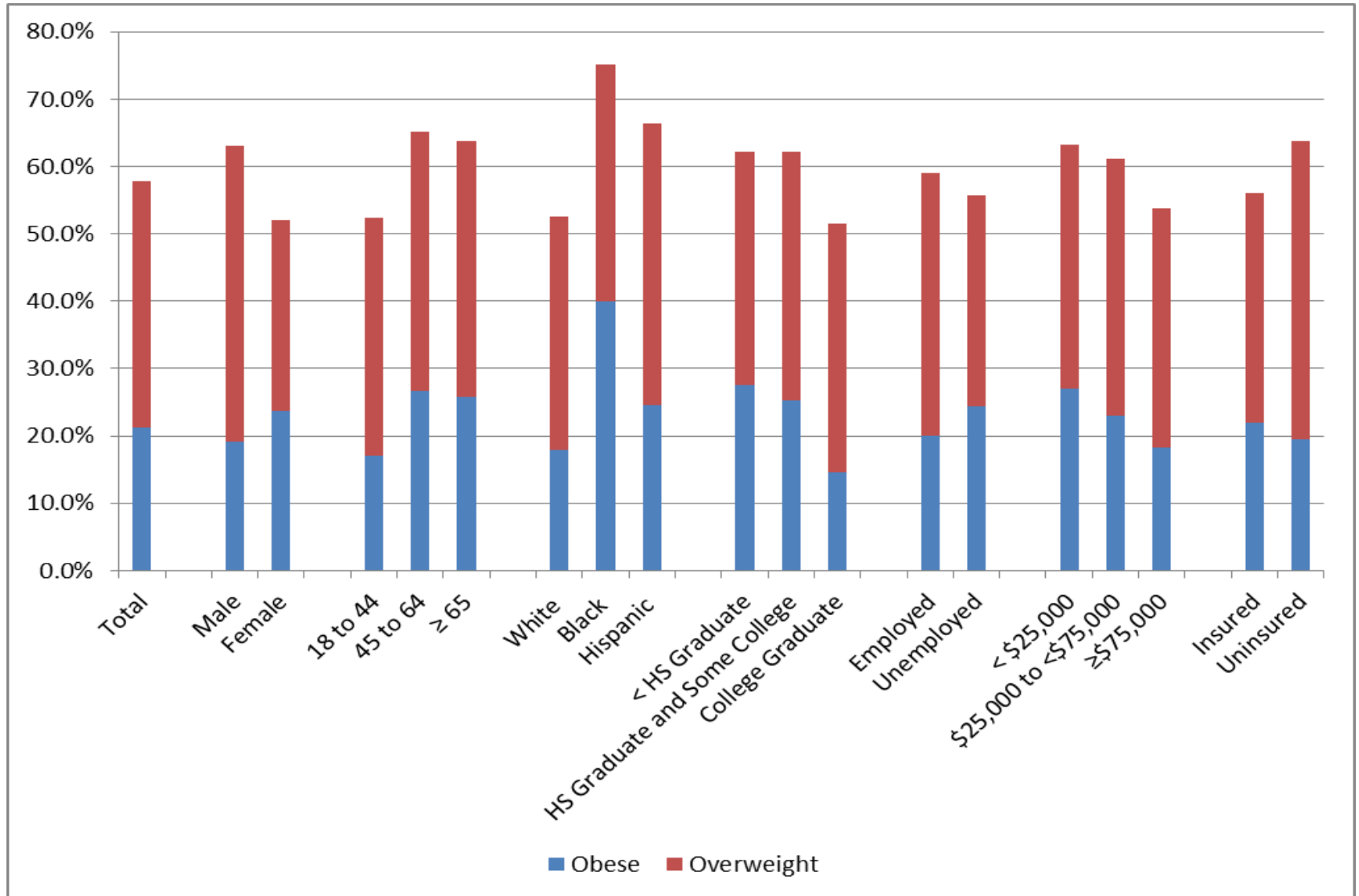


Current Smoking Rates Among Adults 18+ Travis County, 2011-2012

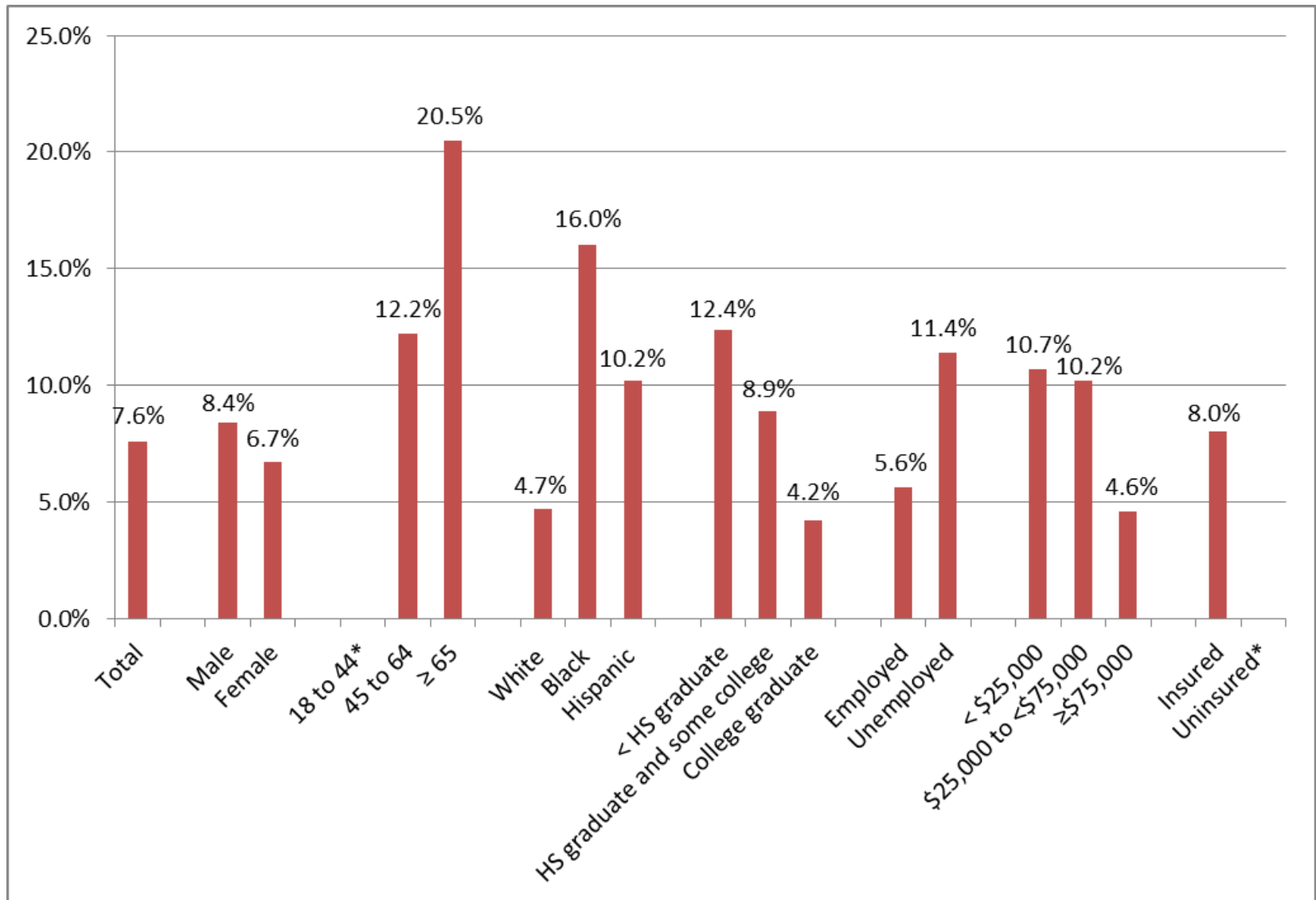


Overweight and Obesity

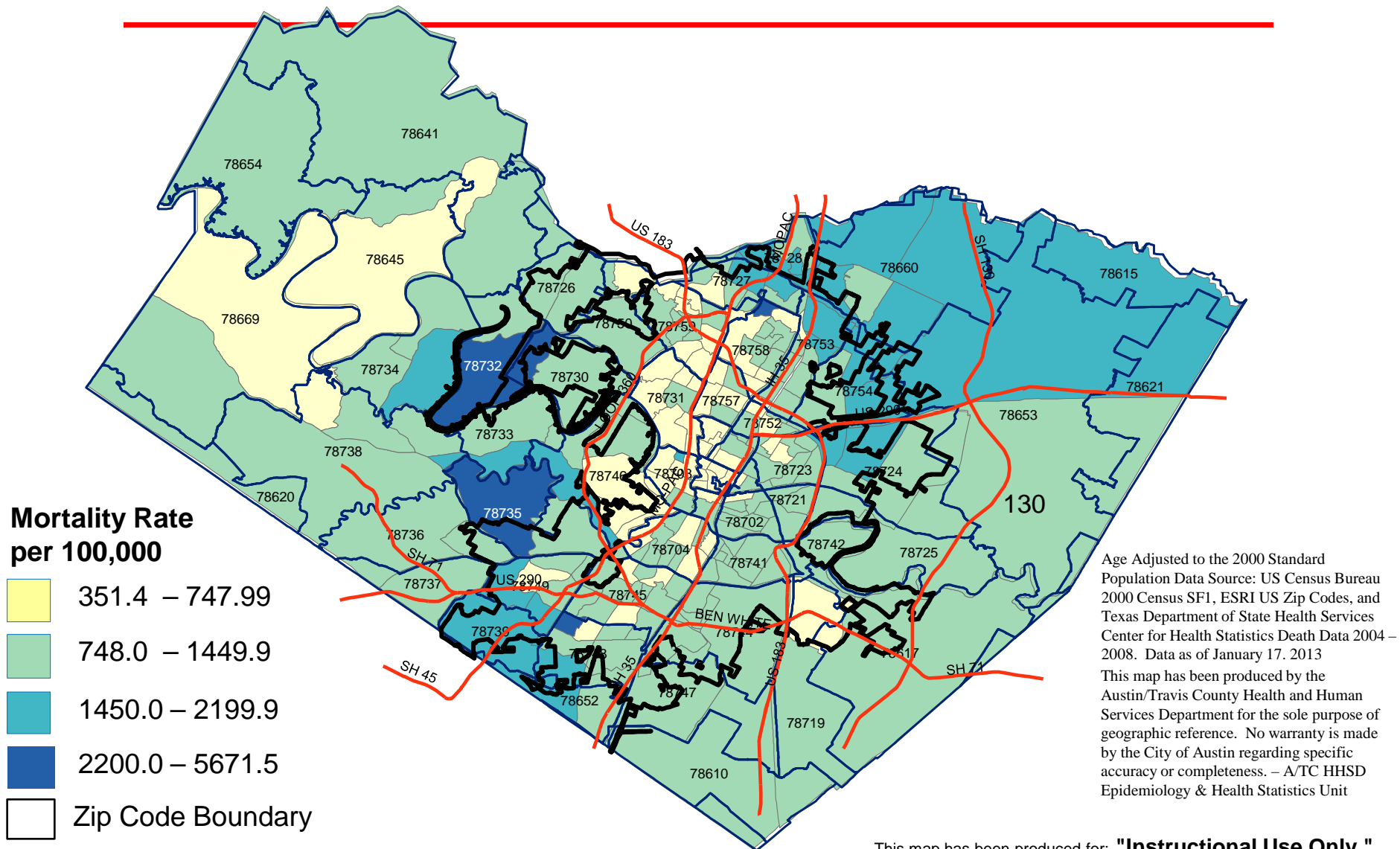
Travis County, 2011-2012



Diabetes Prevalence Among Adults Travis County, 2011-2012



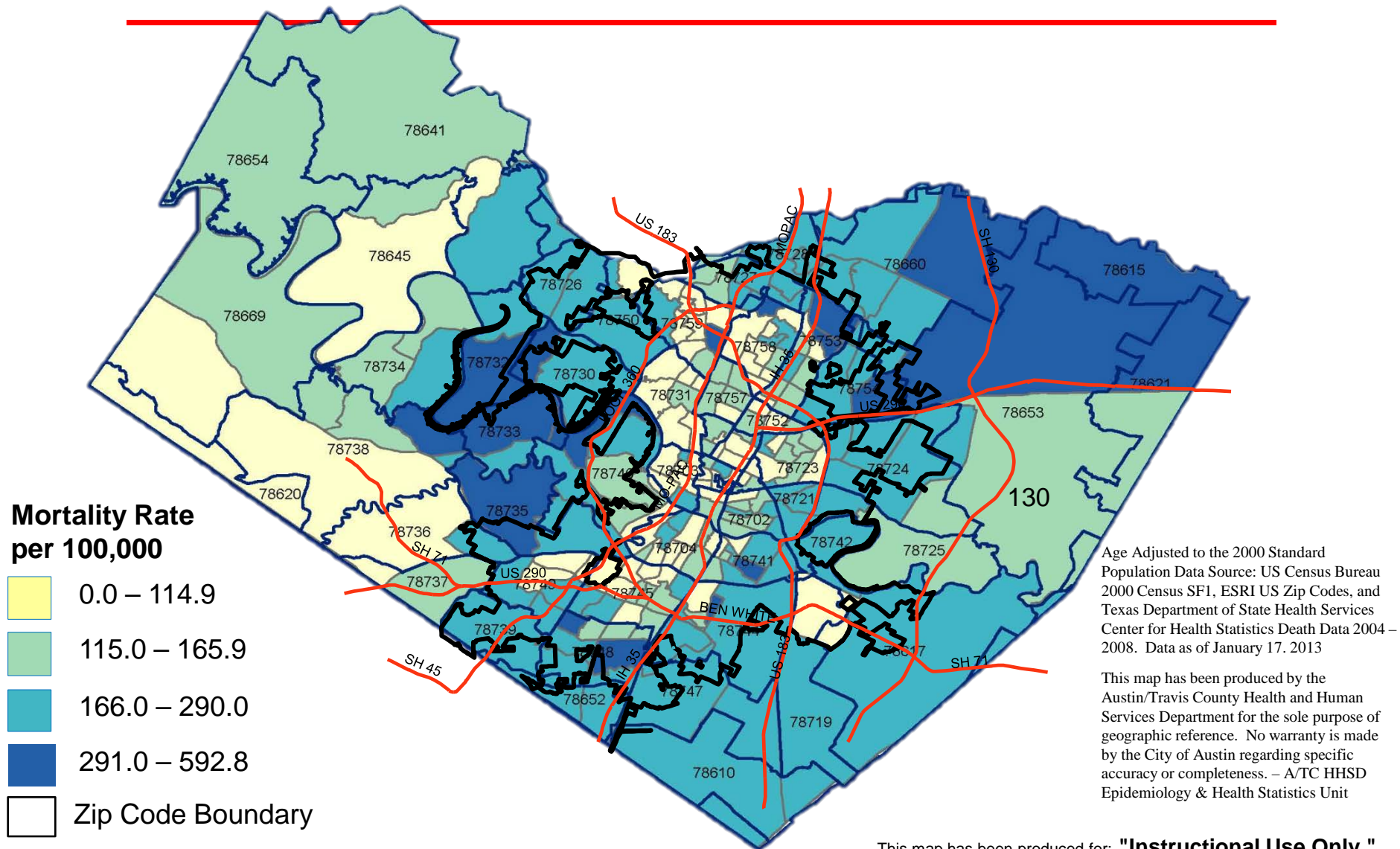
Age Adjusted All Cause Mortality Rate by Year 2000 Census Tract, Travis County 2004 - 2008



All Cause Mortality Rate for Travis County 2004-2008 is 747.4 per 100,000

This map has been produced for: **"Instructional Use Only."**
No warranty is made regarding its accuracy, completeness, or relevance.

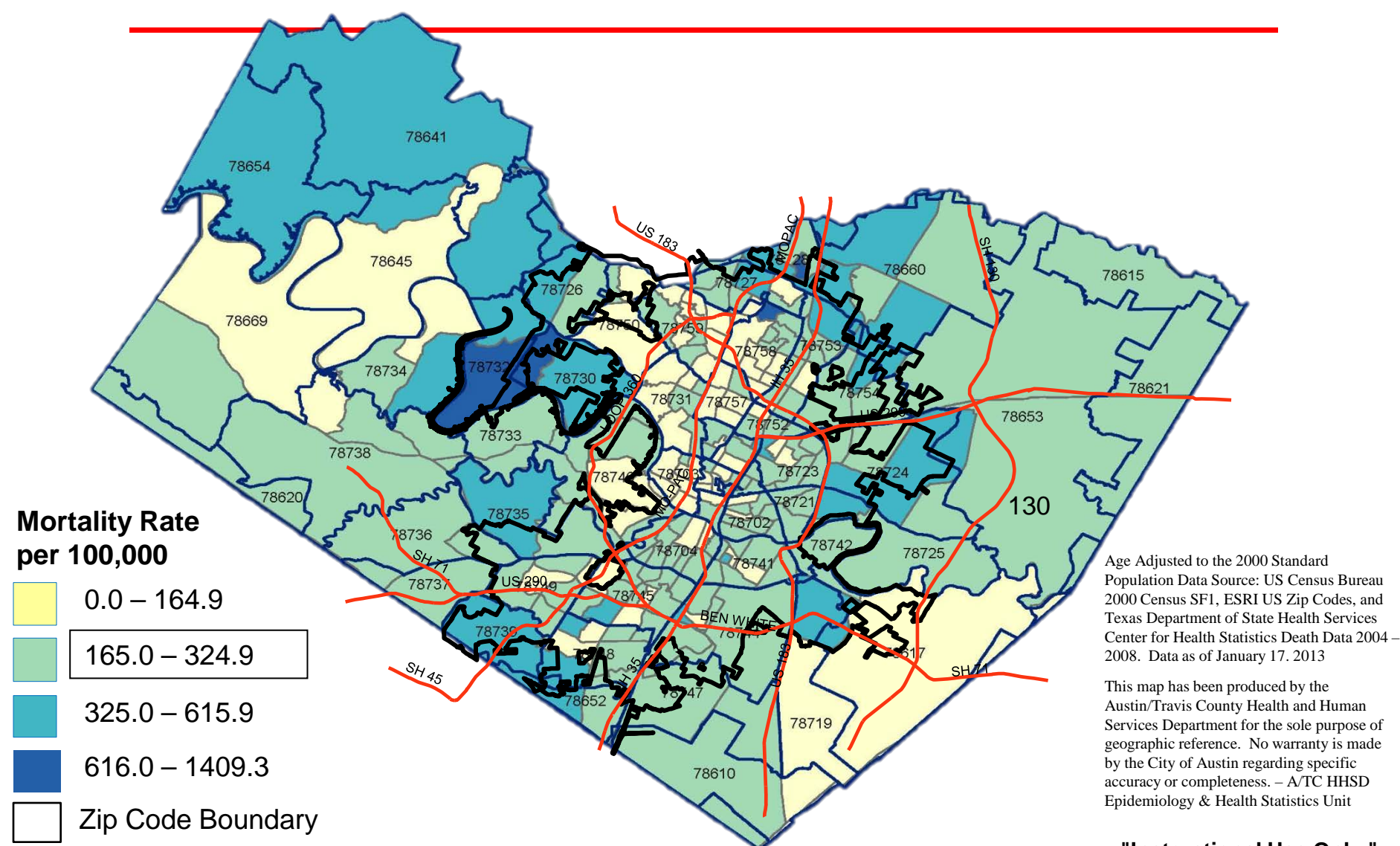
Age Adjusted Cancer Mortality Rate by Year 2000 Census Tract, Travis County 2004 - 2008



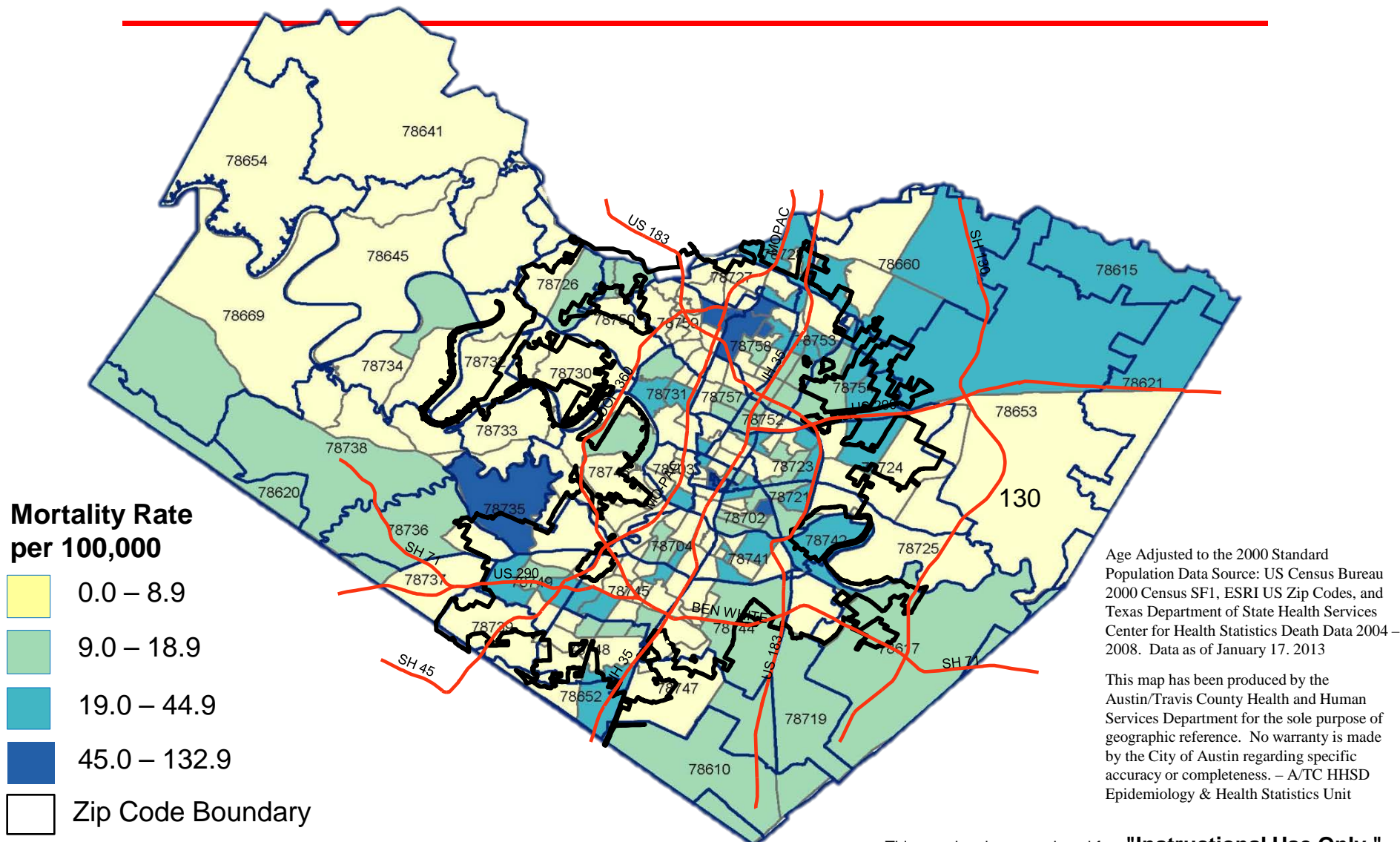
Cancer Mortality Rate for Travis County 2004-2008 is 165.5 per 100,000

This map has been produced for: **"Instructional Use Only."**
No warranty is made regarding its accuracy, completeness, or relevance.

Age Adjusted Heart Disease Mortality Rate by Year 2000 Census Tract, Travis County 2004 - 2008



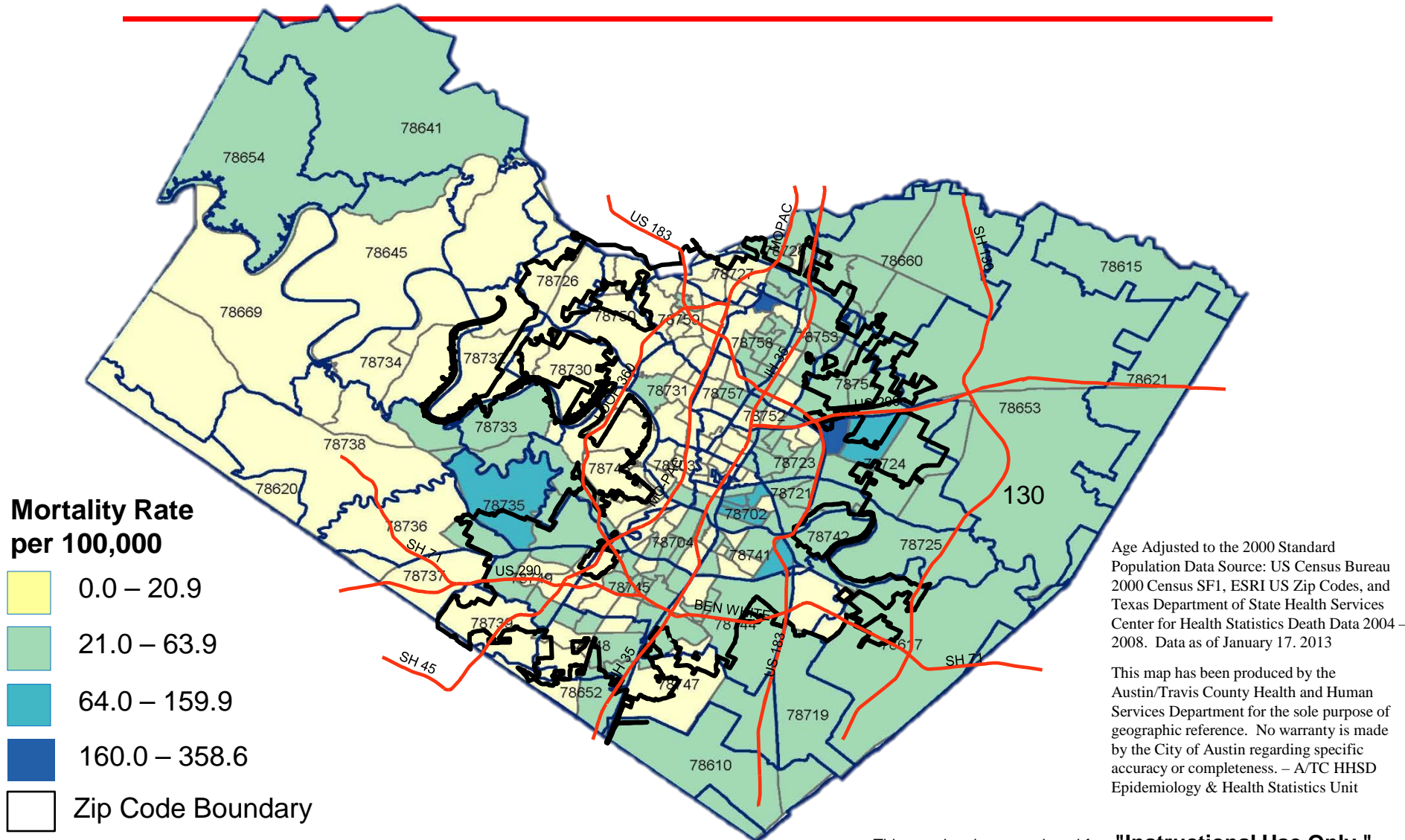
Age Adjusted Hypertension and Hypertensive Renal Disease Mortality Rate by Year 2000 Census Tract, Travis County 2004 - 2008



Hypertension and Hypertensive Renal Disease Mortality Rate for Travis County 2004-2008 is 9.2 per 100,000

This map has been produced for: **"Instructional Use Only."**
No warranty is made regarding its accuracy, completeness, or relevance.

Age Adjusted Diabetes Mortality Rate by Year 2000 Census Tract, Travis County 2004 - 2008



Diabetes Mortality Rate for Travis County 2004-2008 is 20.6 per 100,000

This map has been produced for: **"Instructional Use Only."**
No warranty is made regarding its accuracy, completeness, or relevance.

Health Disparities in Austin/Travis County

Questions?