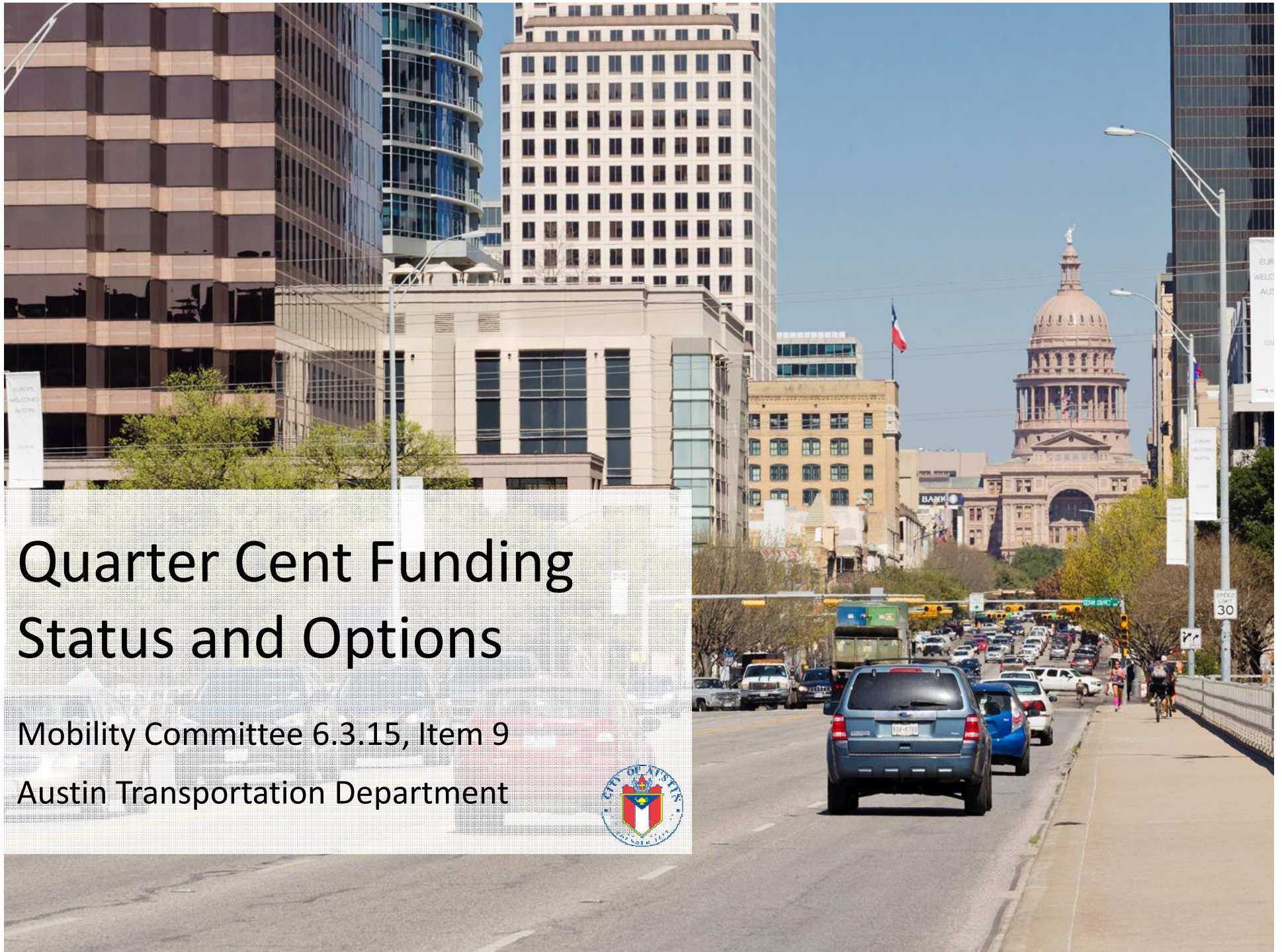


Quarter Cent Funding Status and Options

Mobility Committee 6.3.15, Item 9
Austin Transportation Department



Quarter Cent Funding History

- Light rail proposition defeated in 2000
- In 2001, Cap Metro agreed to **share with City 25% of the their annual revenue**, money previously dedicated for light rail, to fund transportation projects
- \$139 M returned to City with $\frac{1}{4}$ cent funds
- Rail vote passed in 2004 and the Program ended

Quarter Cent Funding Agreement

Inter-local agreement between City and Capital Metro relating to regional mobility and transportation projects. Last modification in April 2010.

Categories:

- Regional Mobility, Sidewalk – School Safety
- Sidewalk
- Bicycle
- Traffic Signals
- Roadway, Intersection Improvements
- Great Streets
- Regional Safety & Mobility
- Maintenance & Reconstruction, and
- Regional Mobility –Right of Way

Any new project must meet one or more of the following criteria: Enhances Regional Mobility; Supports Public Transit; Provides Leverage for Federal or Private Funds; Adds to an Existing Program; and Expedites a Critical Mobility Project.

Quarter Cent Funding Status

Approximately \$139.5M of which currently \$113.4M has been spent to date and approximately \$4.3M is obligated/committed to authorized work. *(The \$2M authorized by previous Council for Airport Blvd. is included in the \$4.3M)*

Approximately \$21.8M remains available.

As part of the financial plan approved by Council for the , “2014 Austin Strategic Mobility Plan”, the remaining balance of Quarter Cent Funding was to be dedicated to Urban Rail operations.

Since the Urban Rail Initiative did not pass, the funds should be redirected to existing infrastructure needs.

Quarter Cent Funding Spending Options

1. Split funding amongst Current or Future Corridor Development programs
(\$385M estimated need for first four below)

- Airport Boulevard (Lamar to US-183)
- Martin Luther King, Jr Boulevard/FM 969 (US-183 to Webberville, TX)
- East Riverside Drive (IH-35 to SH-71)
- North Lamar/Burnet (Lamar from US-183 to IH-35 and Burnet from Koenig to MoPac/Loop 1)
- Guadalupe Street/West Campus (Martin Luther King Jr. Blvd. to W. 29th St.),
- South Lamar (Town Lake to Ben White)

2. Fund various deferred Projects for roadway, railroad crossing or trail improvements across the city (\$100's M estimated need)

3. Improve Traffic Signal System, such as Signal Video Detection, Traffic Signal Controller Firmware , Pedestrian Countdown Timers and Accessible Pedestrian Signals, Additional traffic cameras, ATMS Software Enhancement to achieve Adaptive Signal Control (\$50M + estimated need)

Quarter Cent Funding Spending Options

4. Add new traffic signals and/or Pedestrian Beacons (\$10's M estimated need)
5. Improve access to existing Transit facilities
6. Fund high priority Access Austin projects
7. Disperse remaining fund equitably per Council District to fund mobility projects within each district