

Pine Street Station Relocation Request

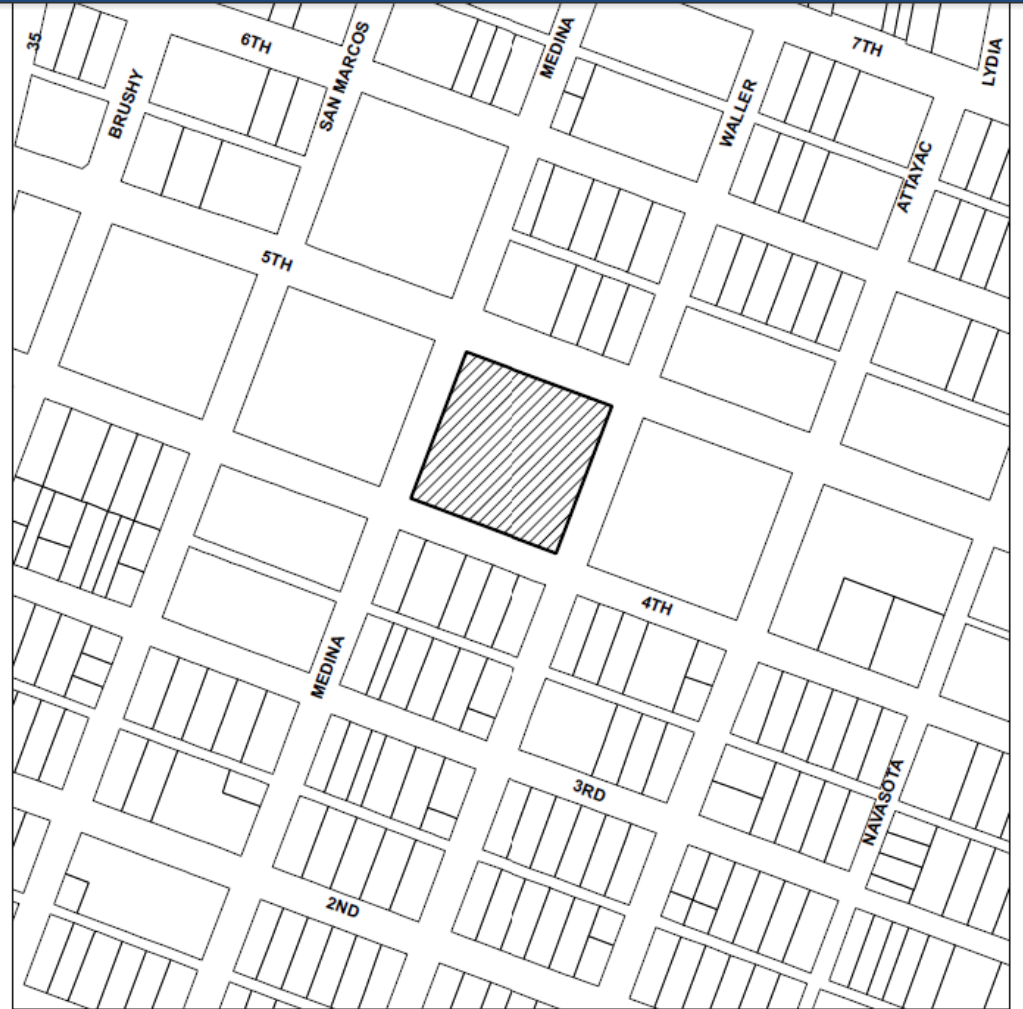
Historic Landmark Commission

6-22-2015



Pine Street Station - 414 Waller Street

414 Waller Street
ca. 1925



SUBJECT TRACT



PENDING CASE



ZONING BOUNDARY

NOTIFICATIONS

CASE#: C14H-2015-0002

LOCATION: 414 Waller Street

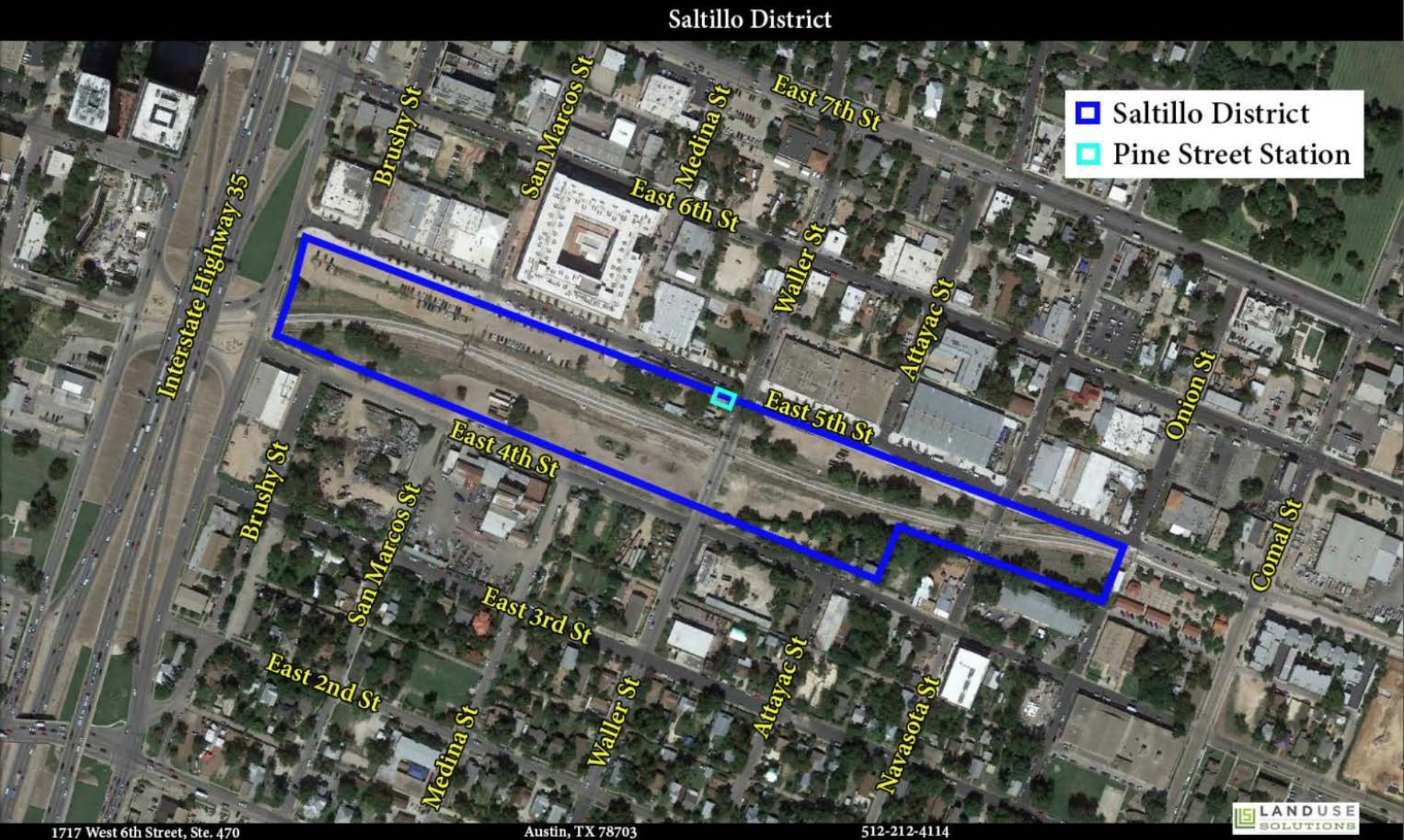
1" = 220'

This product is for informational purposes and may not have been prepared for or be suitable for legal, engineering, or surveying purposes. It does not represent an on-the-ground survey and represents only the approximate relative location of property boundaries.

This product has been produced by CTM for the sole purpose of geographic reference. No warranty is made by the City of Austin regarding specific accuracy or completeness.



Location of Pine Street Station Building



Property Information

- 11 acre property
- Owned by Capital Metro
- Rail line relocation proposed
- Redevelopment proposed

Rail Relocation Proposed

