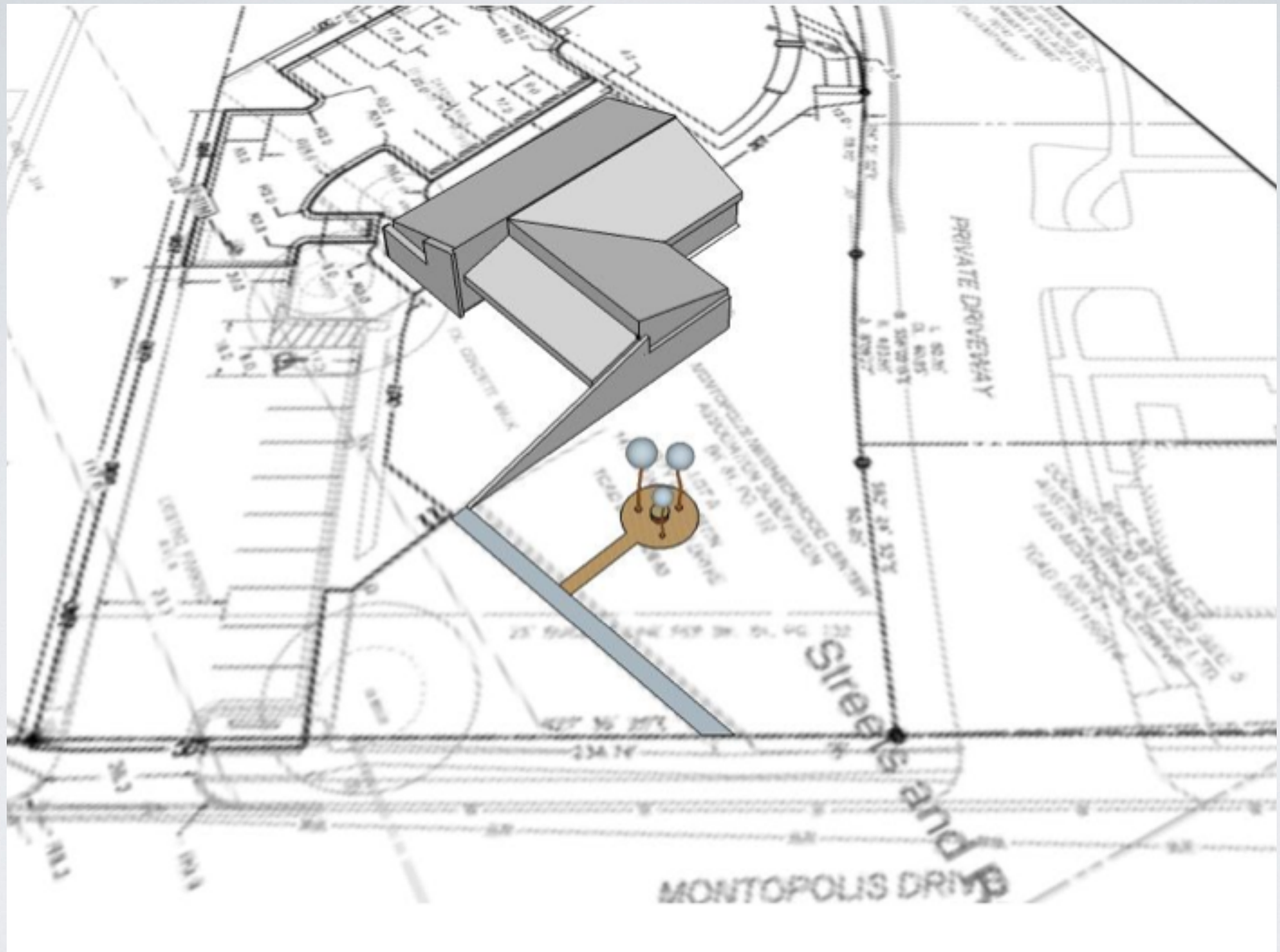




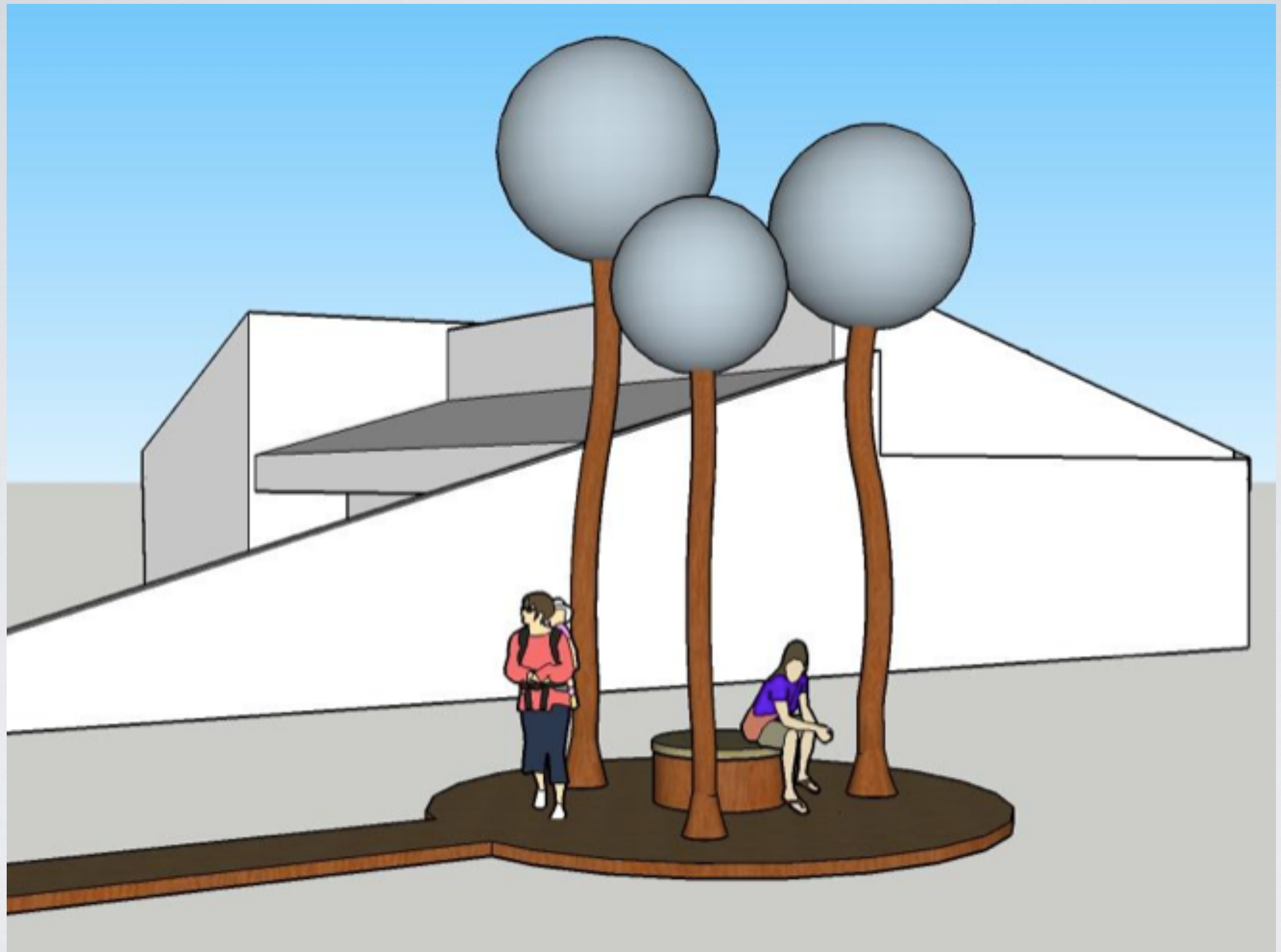
Art in Public Places Project

MONTOPOLIS NEIGHBORHOOD CENTER

Amy Bunker Foster Talge Travis Seeger

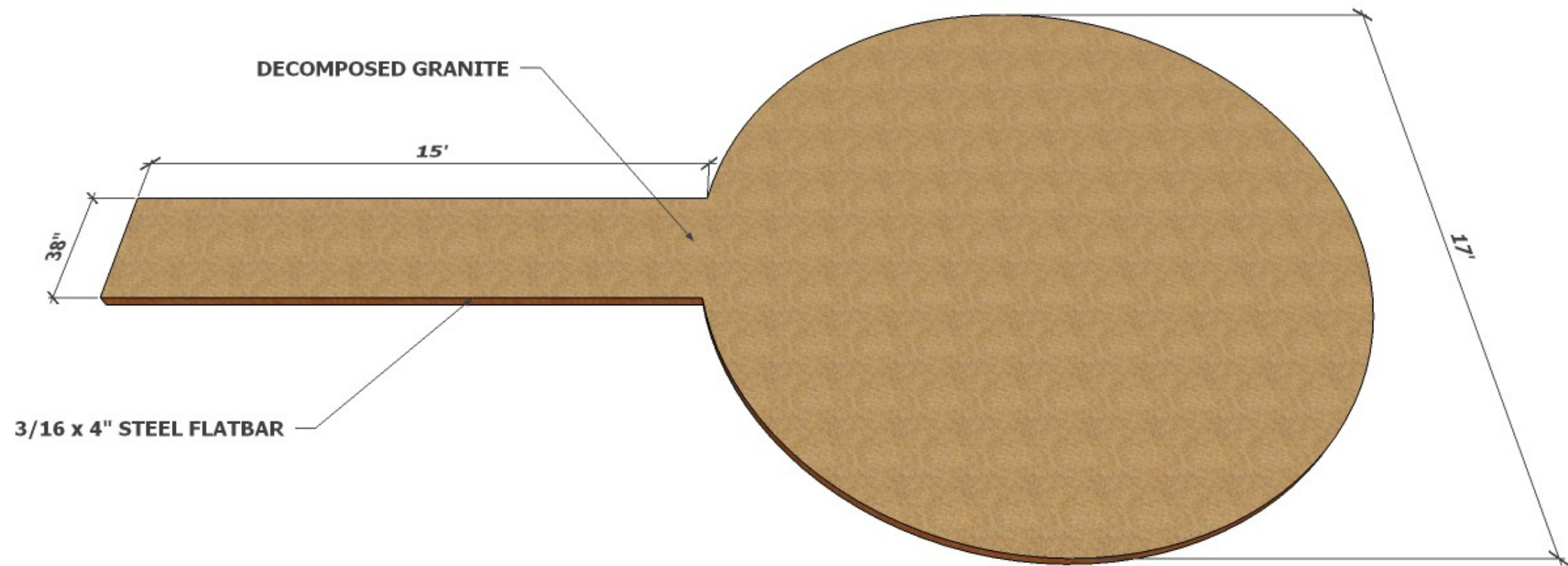


MONTOPOLIS NEIGHBORHOOD CENTER
Amy Bunker Foster Talge Travis Seeger

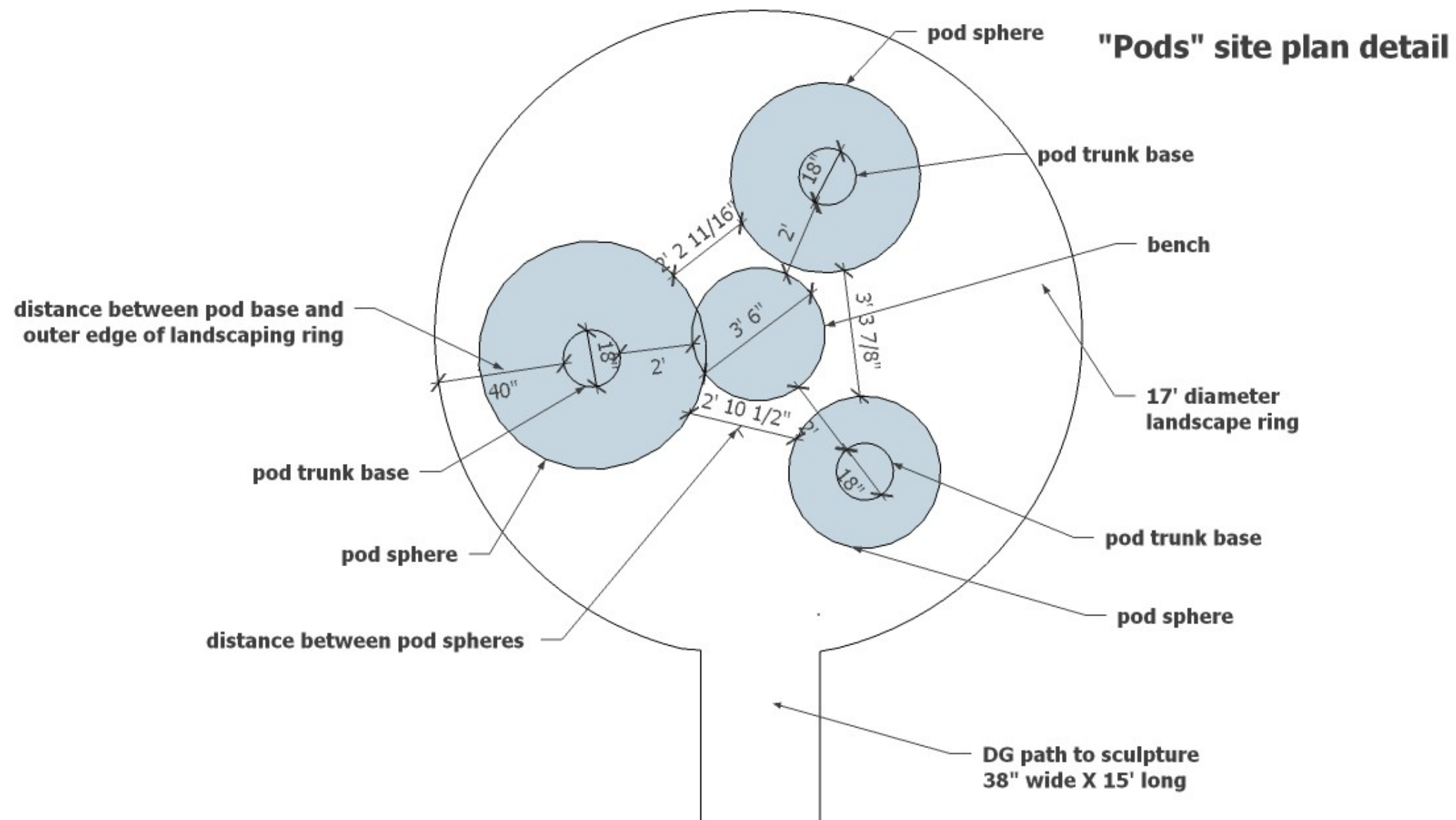


MONTOPOLIS NEIGHBORHOOD CENTER
Amy Bunker Foster Talge Travis Seeger

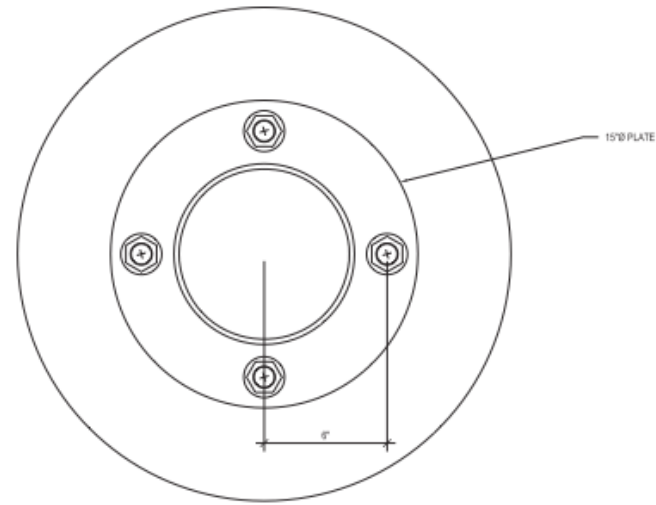
LANDSCAPING RING AND PATH



MONTOPOLIS NEIGHBORHOOD CENTER
Amy Bunker Foster Talge Travis Seeger



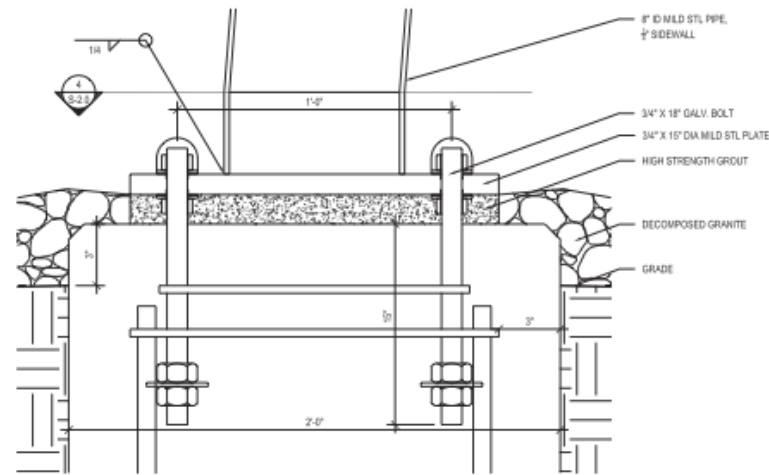
MONTOPOLIS NEIGHBORHOOD CENTER
Amy Bunker Foster Talge Travis Seeger



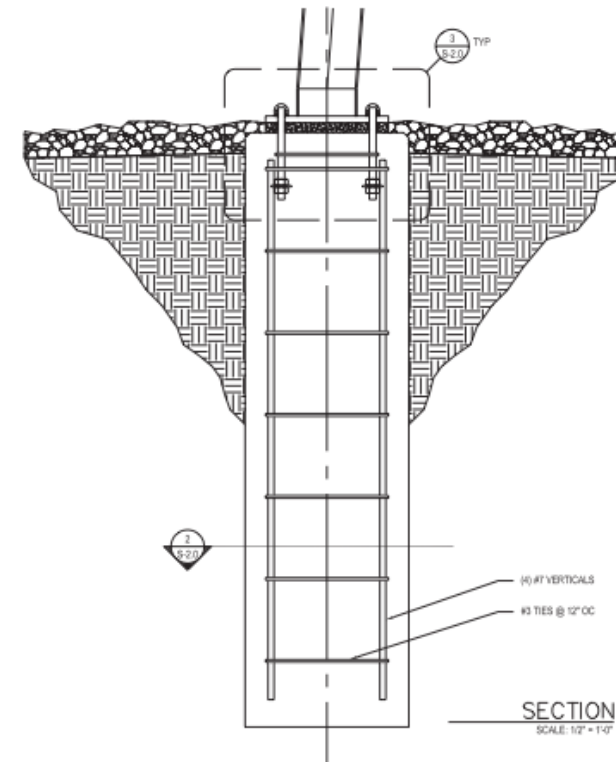
DETAIL 4
SCALE: 1-1/2\"/>



PLAN 2
SCALE: 1/2\"/>

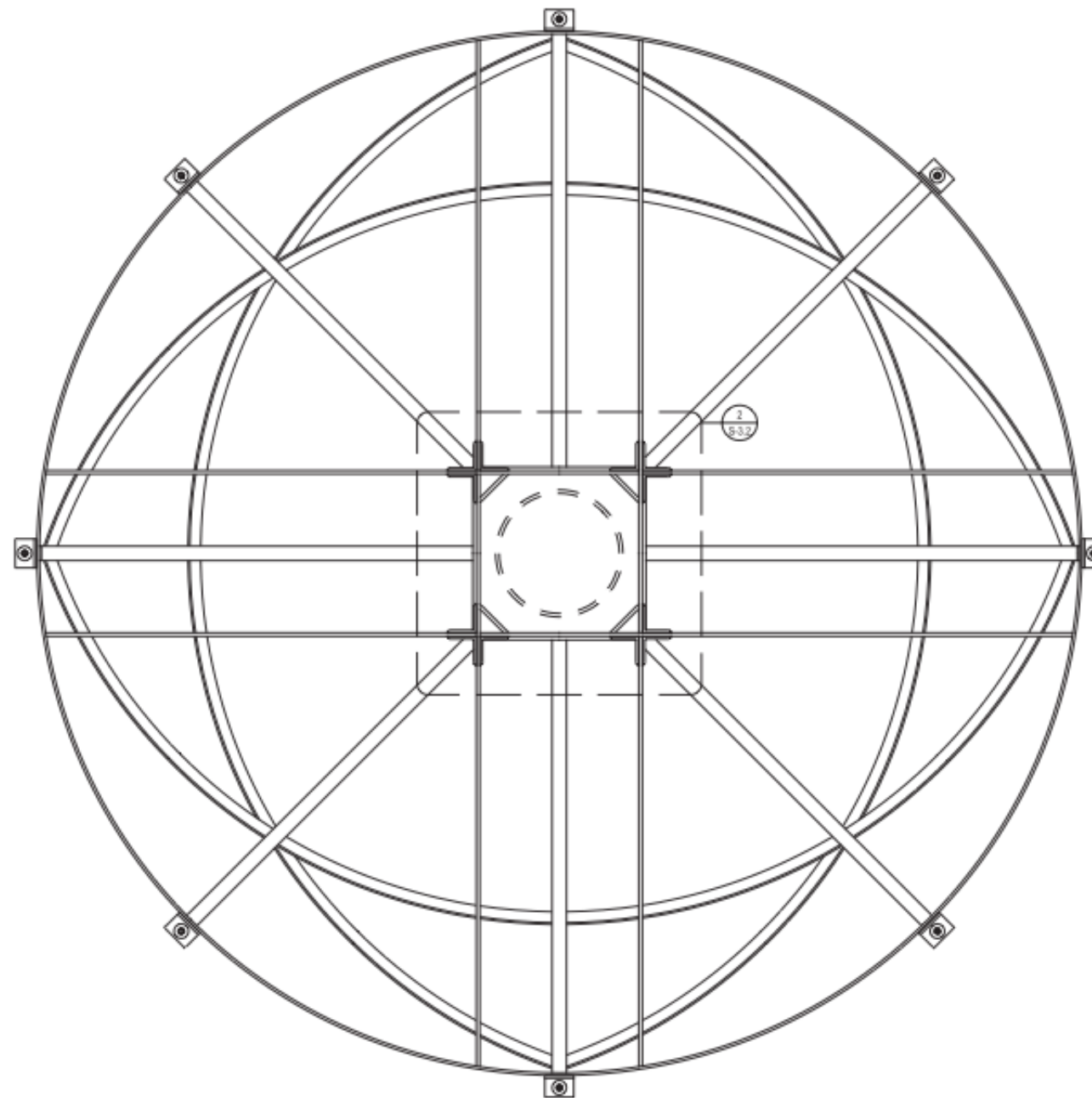


DETAIL 3
SCALE: 1-1/2\"/>



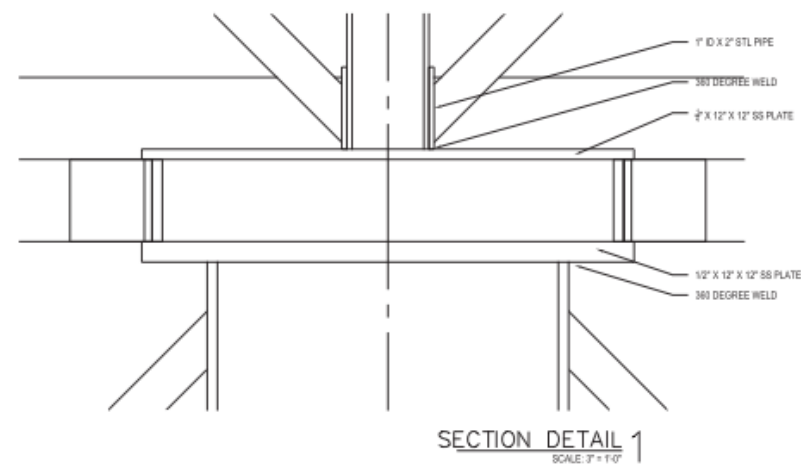
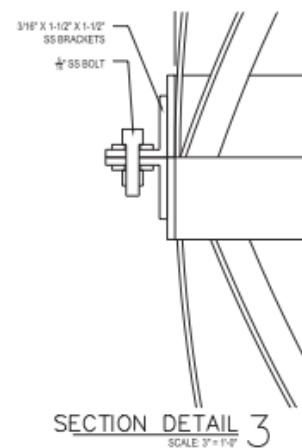
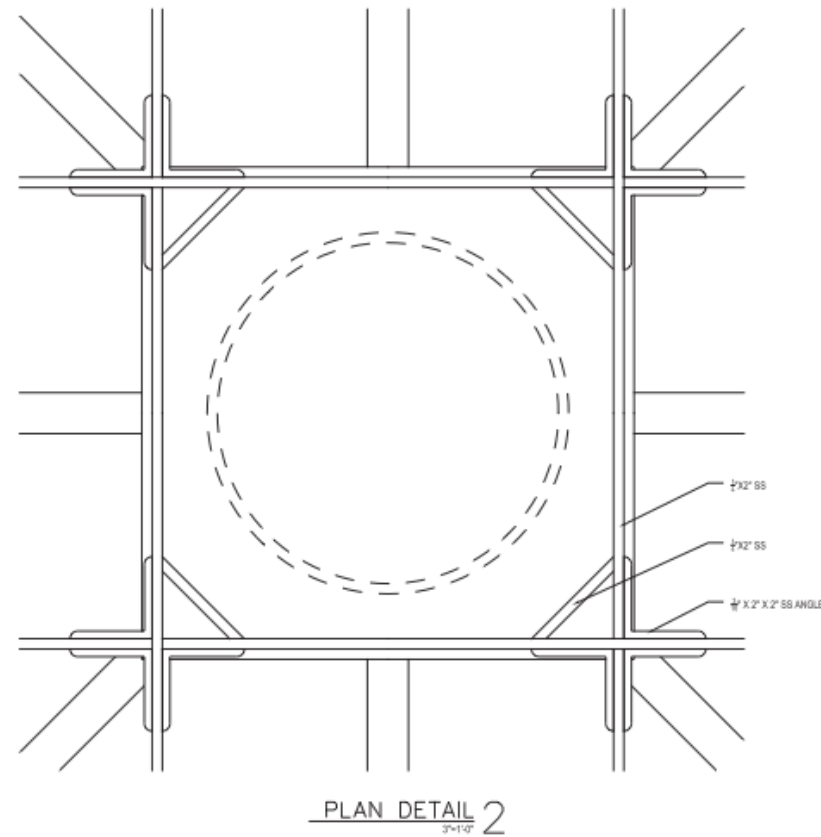
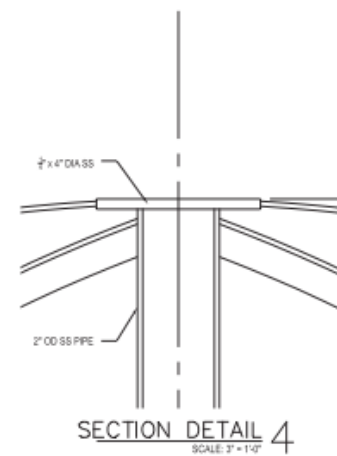
SECTION 1
SCALE: 1/2\"/>

MONTOPOLIS NEIGHBORHOOD CENTER
Amy Bunker Foster Talge Travis Seeger

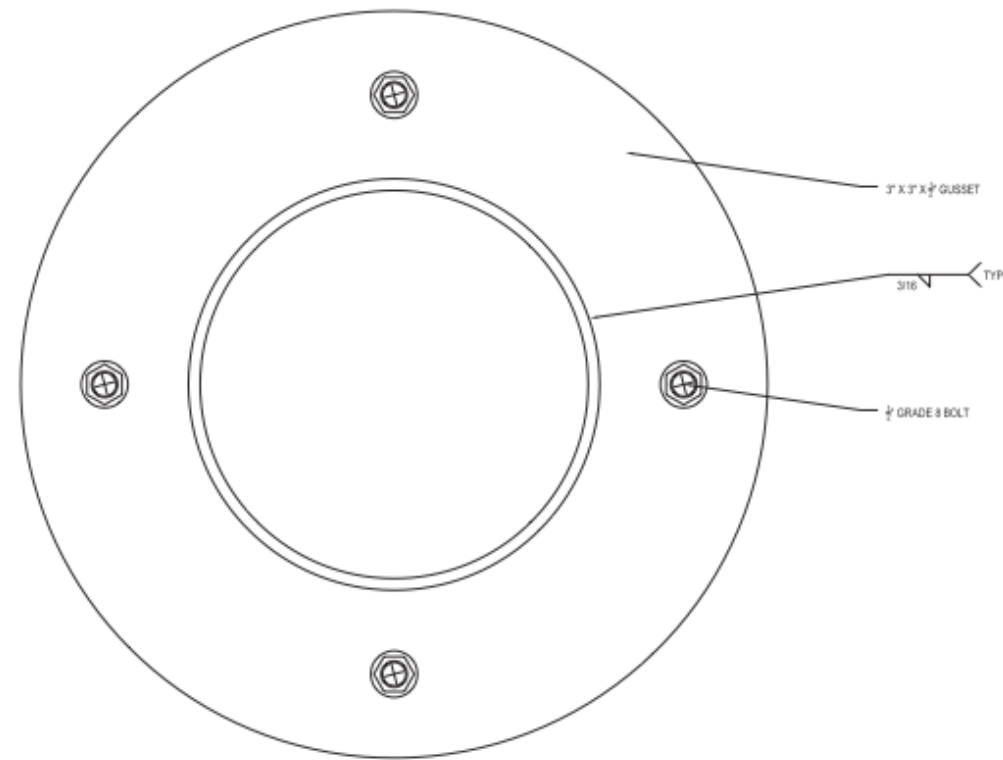


PLAN DETAIL 1
SCALE: 1" = 1'-0"

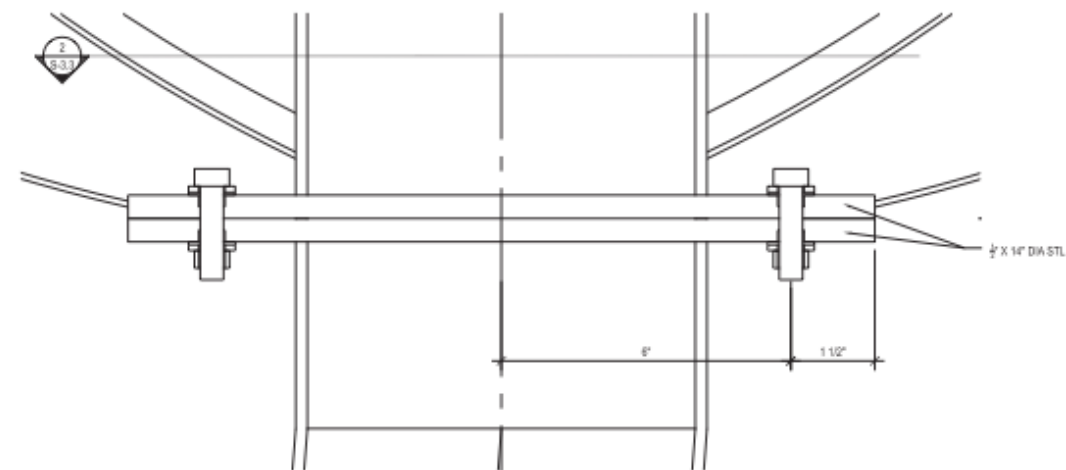
MONTOPOLIS NEIGHBORHOOD CENTER
Amy Bunker Foster Talge Travis Seeger



MONTOPOLIS NEIGHBORHOOD CENTER
Amy Bunker Foster Talge Travis Seeger

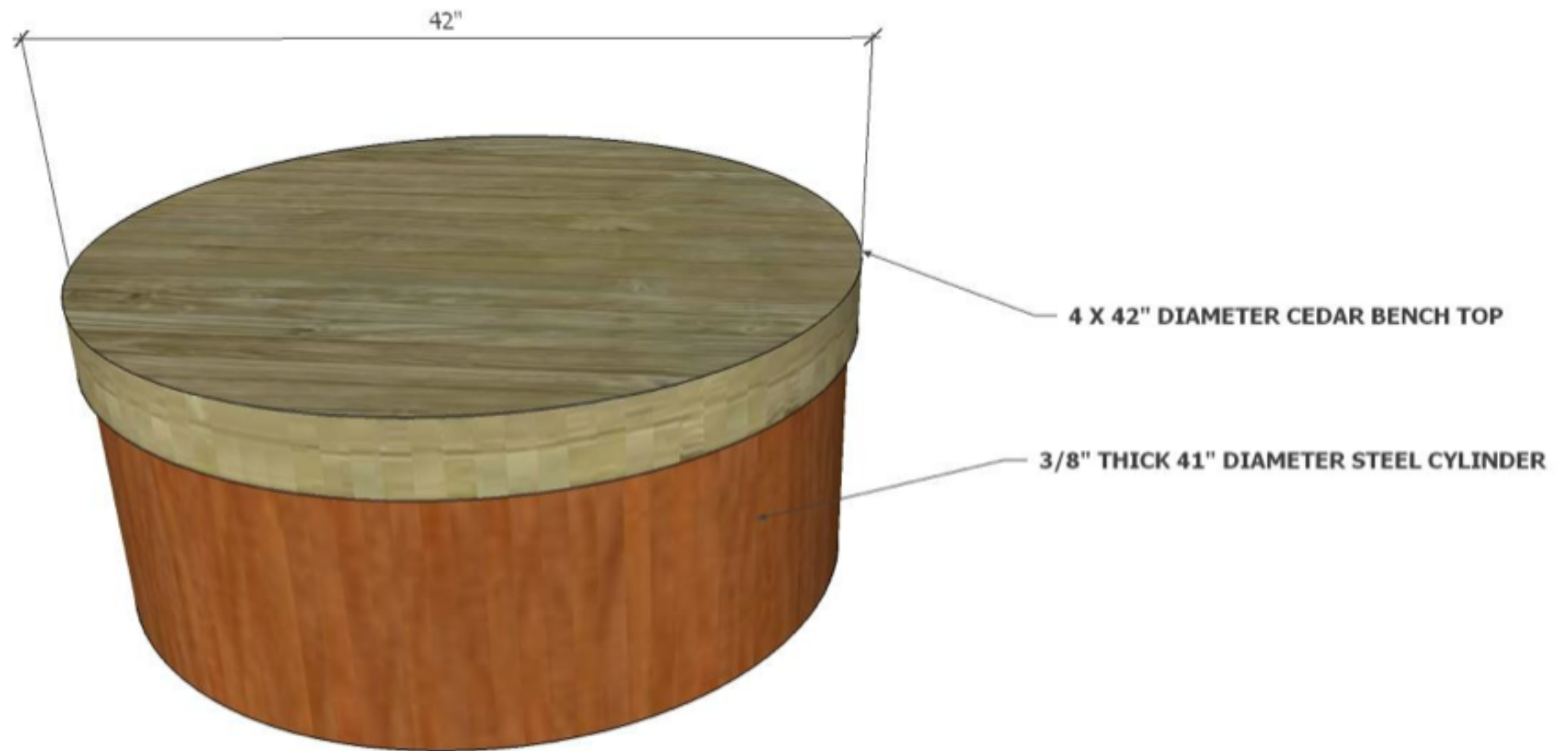


PLAN DETAIL 02
SCALE: 3" = 1'-0"

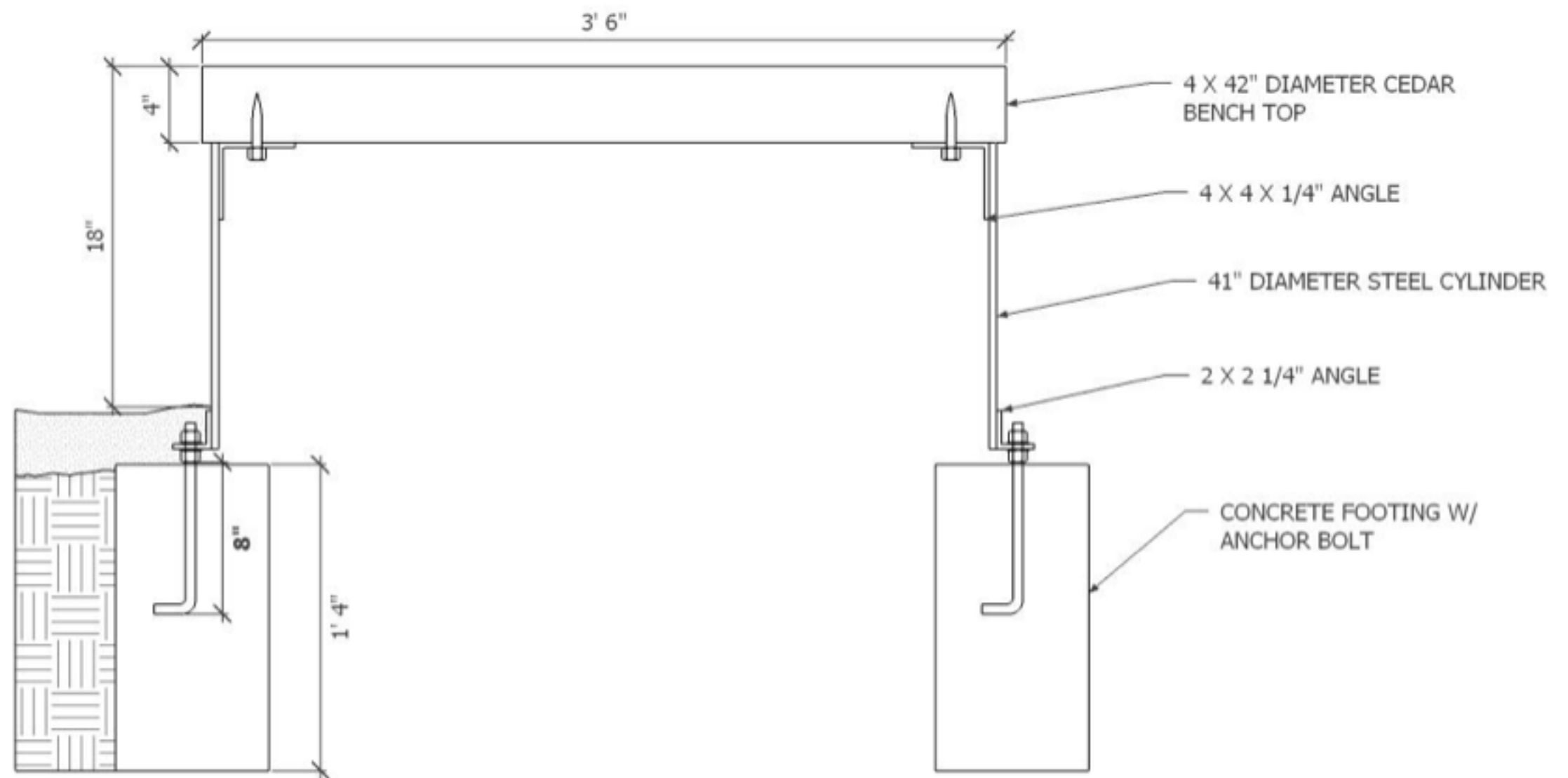


SECTION DETAIL 01
SCALE: 3" = 1'-0"

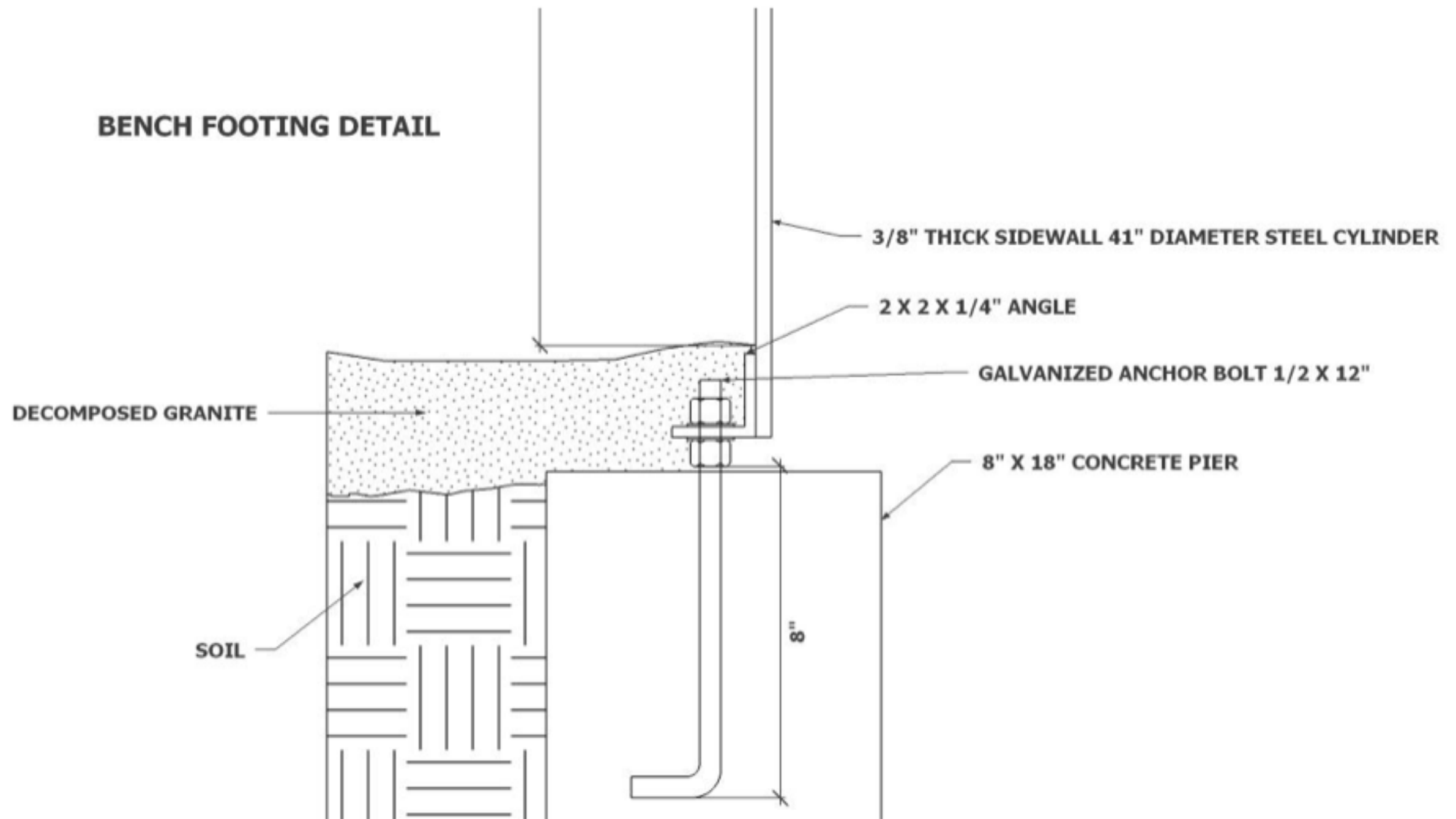
MONTOPOLIS NEIGHBORHOOD CENTER
Amy Bunker Foster Talge Travis Seeger



MONTOPOLIS NEIGHBORHOOD CENTER
Amy Bunker Foster Talge Travis Seeger

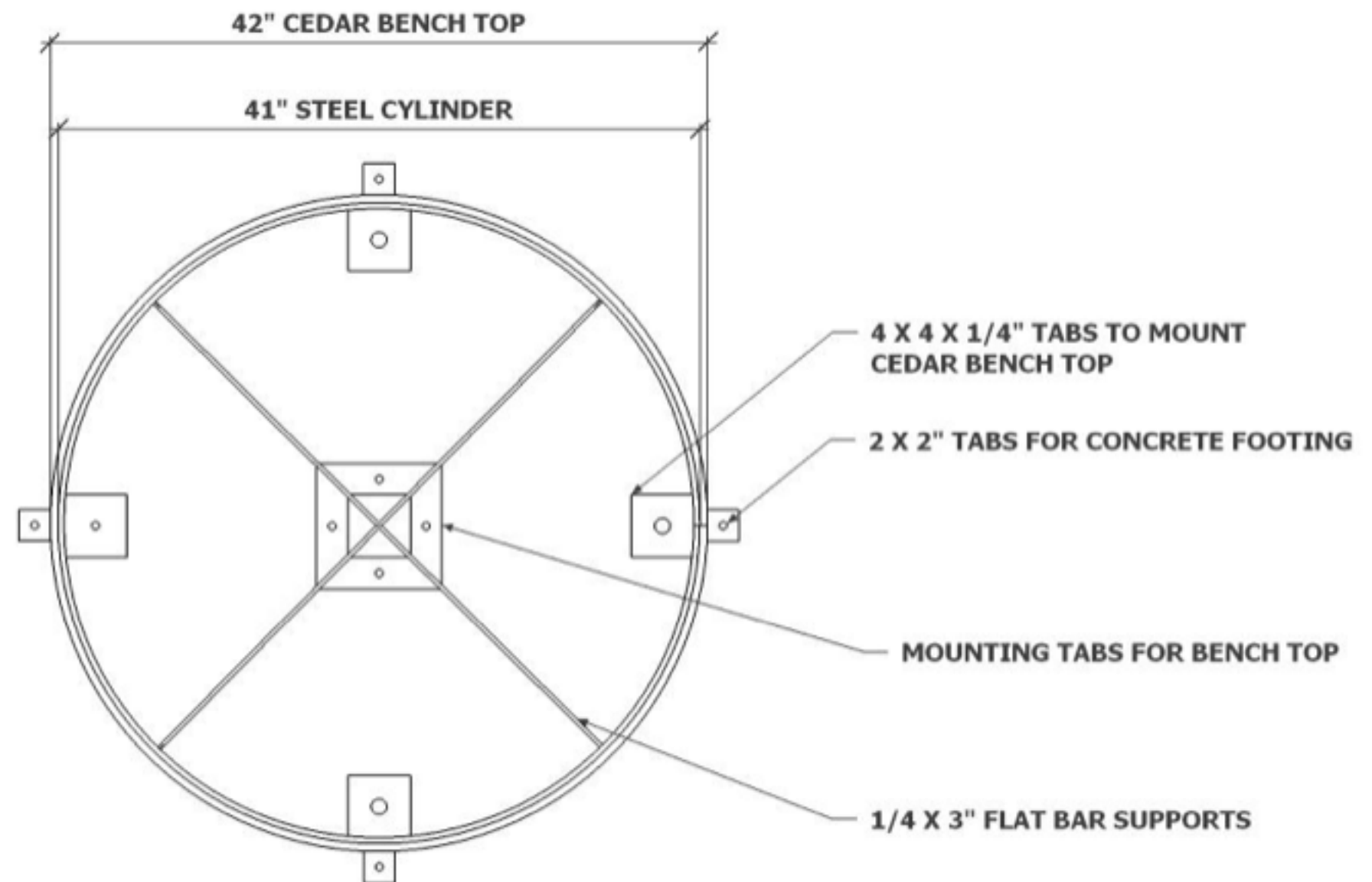


MONTOPOLIS NEIGHBORHOOD CENTER
Amy Bunker Foster Talge Travis Seeger



MONTOPOLIS NEIGHBORHOOD CENTER
Amy Bunker Foster Talge Travis Seeger

BENCH DETAIL - TOP



MONTOPOLIS NEIGHBORHOOD CENTER
Amy Bunker Foster Talge Travis Seeger

TIMELINE

July: Final Design Approval

August - March: Fabrication

April 2016: Installation

May 2016: Completion

MONTOPOLIS NEIGHBORHOOD CENTER

Amy Bunker Foster Talge Travis Seeger



MONTOPOLIS NEIGHBORHOOD CENTER
Amy Bunker Foster Talge Travis Seeger

MONTOPOLIS NEIGHBORHOOD CENTER			\$42,000		
Amy Bunker, Travis Seeger, Foster Talge					
		DETAILS	EXPECTED COST		ACTUAL COST
INSURANCE					
Auto Liability		Geico (\$50/month for 2 months) (Travis)	\$100		
General Liability		Hartford Insurance (annual policy) (Amy)	\$425		
ARCHITECTS, ENGINEERS, ETC.					
Architectural Services (renderings)		Travis Seeger (\$20/hr x 30 hours)	\$600		
CAD drawings		Andrew Green (\$40/hr x 10 hours)	\$400		
Structural Engineer (stamped drawings)		Larry Fisher (Structural Engineer)	\$2,500		
Registered Accessibility Specialist			\$0		
FABRICATION COSTS					
All materials		(Breakdown below)	\$11,520		
Labor		(\$50/hr x 200 hours)	8,600		
Skytrak Rental		United Rentals - telehandler rental (one month)	\$1,000		
TRANSPORTATION					
Artist site visits (10 visits at \$0.56/mile)		Amy - Austin (10 mi R/T x \$0.56 = \$5.60 x 10 = \$56.00)	\$616		
		Travis - Elgin (60 mi R/T x \$0.56 = \$33.60 x 10 = \$336.00)			
		Foster - Lake Travis (40 mi R/T x \$0.56 = \$22.40 x 10 = \$224.00)			
SITE WORK					
Soil testing & drilling, excavation		AJ Drilling Inc. (day rate)	\$2,000		
Foundation, concrete work, rebar		EB Construction (\$600 per pad)	\$1,800		
Landscaping		Decomposed Granite (3 yards x \$35/yd + \$80 delivery fee)	\$185		
Skytrak Rental		United Rentals - telehandler rental (one week)	\$1,625		
DESIGN FEE					
Artist Fee		(\$1260 paid on 5/8/14) (\$2100 paid on 8/14/14)	\$8,400		
Maquettes		(Breakdown below)	\$129		
Contingency		(5% of \$42,000)	\$2,100		

TOTAL				42000		
MATERIAL BREAKDOWN			PURPOSE			
(1) 22' L x 6" D x 0.203" thick mild steel pipe			Short trunk	\$250		
(2) 22' L x 8" D x 0.203" thick mild steel pipe			Long trunks	\$500		
(1) 10' L x 8" D x 0.25" thick mild steel pipe			Short bending jig	\$125		
(1) 10' L x 10" D x 0.25" thick mild steel pipe			Long bending jig	\$125		
(1) 4' L x 8' W x 1" thick mild steel plate			Mounting plate (custom built)	\$1,100		
(16) 90 degree anchor bolts for concrete base			Mounting hardware (1" diameter, 24" long Grade 55 bolts)	\$225		
(25) 12' L 1" W x 1/8" thick stainless steel flat bar			Inner armature for spheres (\$12.25/bar x 25 = \$306.25 x 3 = \$918.7	\$919		
Square tubing, angle & flat bar			Internal bracing for spheres (\$350 per sphere x 3 = \$1050)	\$1,050		
(2000) 18 ga. lasercut stainless steel (\$2.93 ea)			Leaves (2000 x \$2.93 = \$5860 + \$200 shipping)	\$6,060		
(5) rolls at \$120 each			Welding wire	\$600		
(\$11/month rental for 6 months + \$100 to fill)			Welding gas	\$166		
Propane			Heating/bending pipe	\$200		
Sanding discs			Finishing work	\$200		
TOTAL - MATERIALS				\$11,520		
MAQUETTE BREAKDOWN			PURPOSE			
Scissors			Cutting Aluminum	\$6		
Aluminum Flashing			Leaves	\$7		
Fiberboard			Ground	\$8		
1/2" Copper Pipe (5')			Stalk for small pods	\$8		
3/4" Copper Pipe (5')			Stalk for big pods	\$14		
4" Foam Ball			Small pod	\$3		
5" Foam Ball			Medium pod	\$3		
6" Foam Ball			Large pod	\$6		
Bath Mat			Ground covering	\$14		
Plaster			Rigid surface	\$5		
ProLine Loctite			Adhering leaves	\$8		

Patina veneer		Mild steel effect	\$12	
Gravel		Substrate (DG)	\$4	
Spray paint		Veneer/patina	\$6	
Epoxy Putty		Flare on base of pipe	\$5	
Steel flatbar		Edging on the model	\$4	
Basketball		2 balls x \$5/ea.	\$10	
Double-sided tape		3 rolls x \$2/ea.	\$6	
TOTAL - MAQUETTE			\$129	
ADDITIONAL BENCHES (PROPOSED)				
Structural Engineer (stamped drawings)		Larry Fisher (structural Engineer)	\$500	
Design Fee (Montopolis Team)		Amy Bunker, Travis Seeger, Foster Talge (\$100/each)	\$300	
(3) 20' x 5" x 1/8" mild steel flat bar		Steel ring for landscaping containment (\$20/each)	\$60	
(1) 20' x 1/2" x 1/4" mild steel flat bar		Splint for welded conjunctions for containment (\$20 each)	\$20	
(3) 10' x 5/8" American Rebar		Grounding stakes (cut into 18" pieces = 6 stakes x 3 = 18) (\$8/each)	\$24	
(1) 10' x 5/8" American Rebar		Grounding stakes (cut into 12" pieces = 10 stakes) (\$9/each)	\$9	
(1) 41" diameter steel cylinder		Bench footprint (\$100/each)	\$100	
(8) 18" x 3/4" All-thread galvanized bolts		Anchor bolts invested in concrete bolted into steel (\$4/each)	\$32	
(2) 4" x 16" x 6' Cedar		Bench surface (planed, cut, routed, sanded, oiled) (\$100/each)	\$200	
(1) Gallon Tung Oil		Sealant for seating area (1x application) (\$50 each)	\$50	
(3) 8" x 48" Sonotube		Piers for anchor bolts (cut into 3 tubes) (\$7 each)	\$21	
(8) Concrete		Heavy duty mix (\$3/bag)	\$24	
Labor		Welding (\$50/hr x 150 hours)	\$7,500	
Labor		Cutting, routing & sanding (\$60/hr x 10 hours)	\$600	
Labor		Bending steel (\$140/hr x 4 hours)	\$560	
TOTAL - BENCH			\$10,000	