

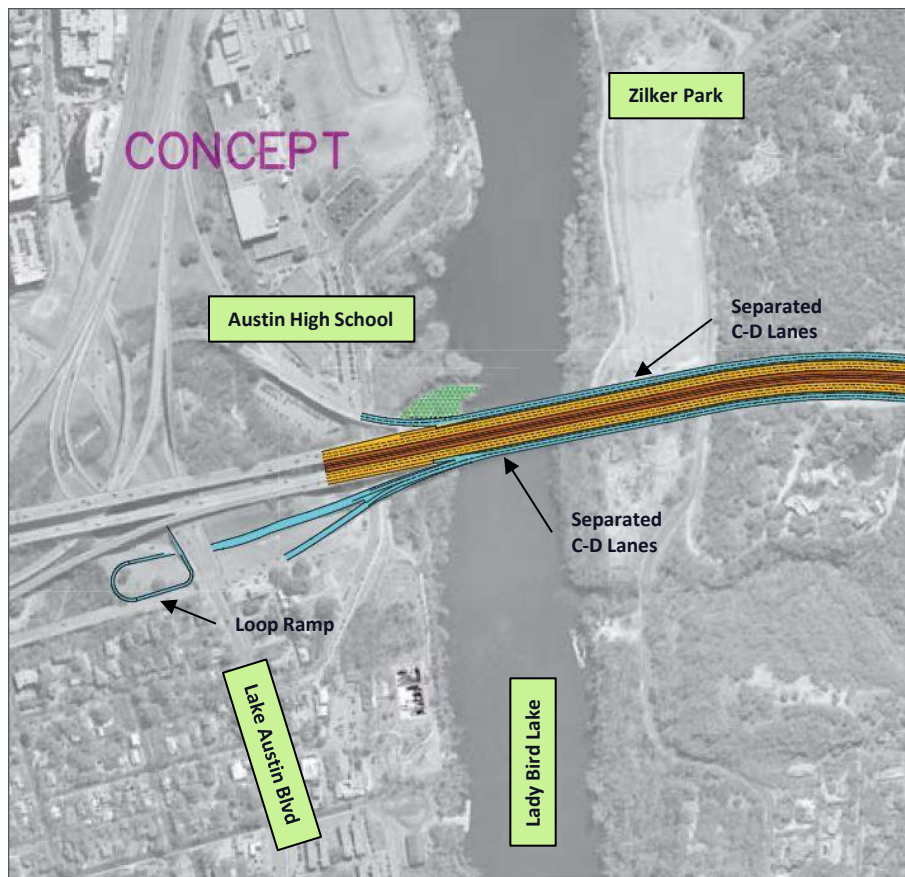
**Mobility Committee** August 5, 2015

## Loop 1 S. MoPac Express Lane Alternative Build Scenarios

Rob Spillar, Director, P.E.

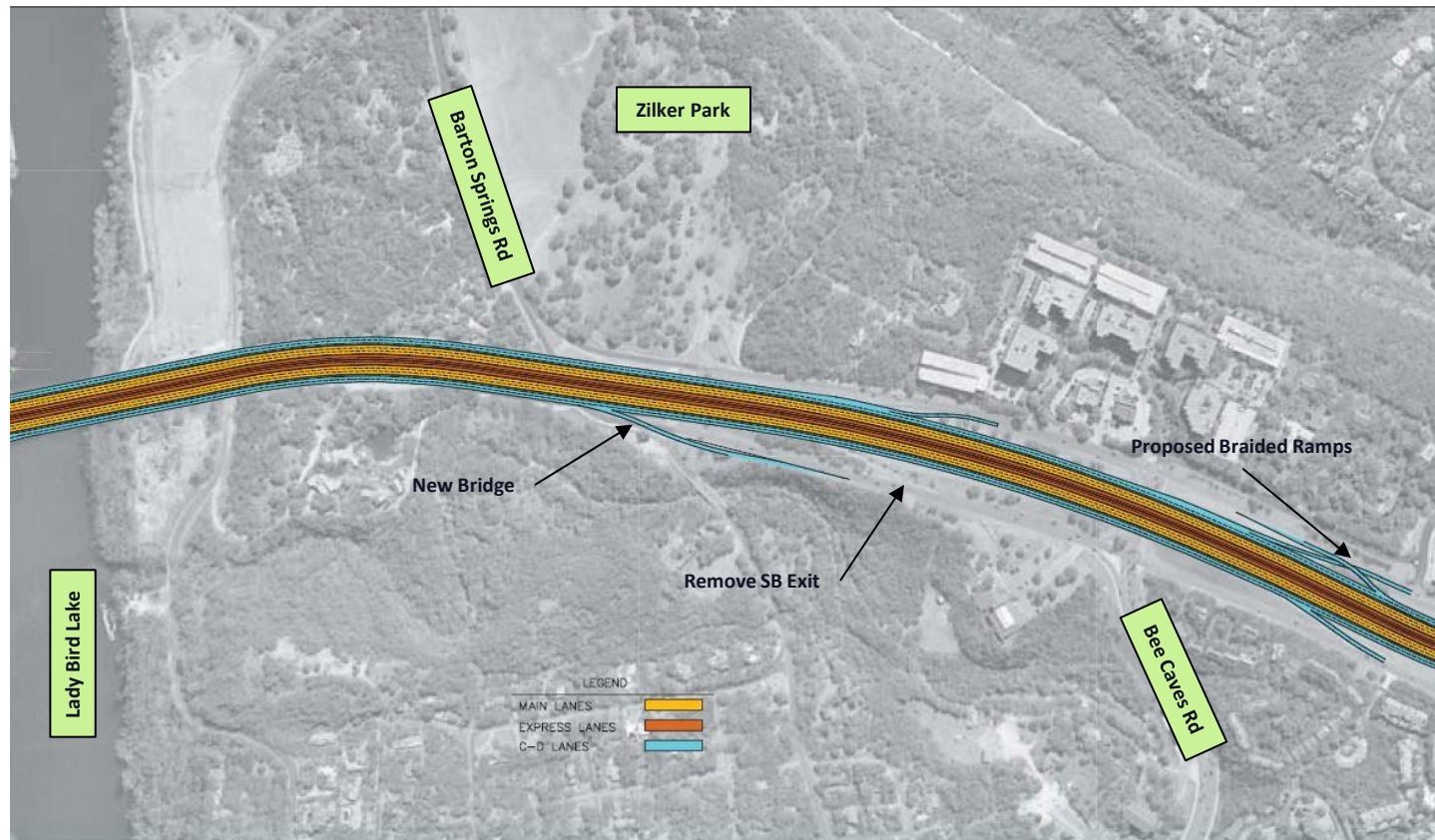
Austin Transportation Department



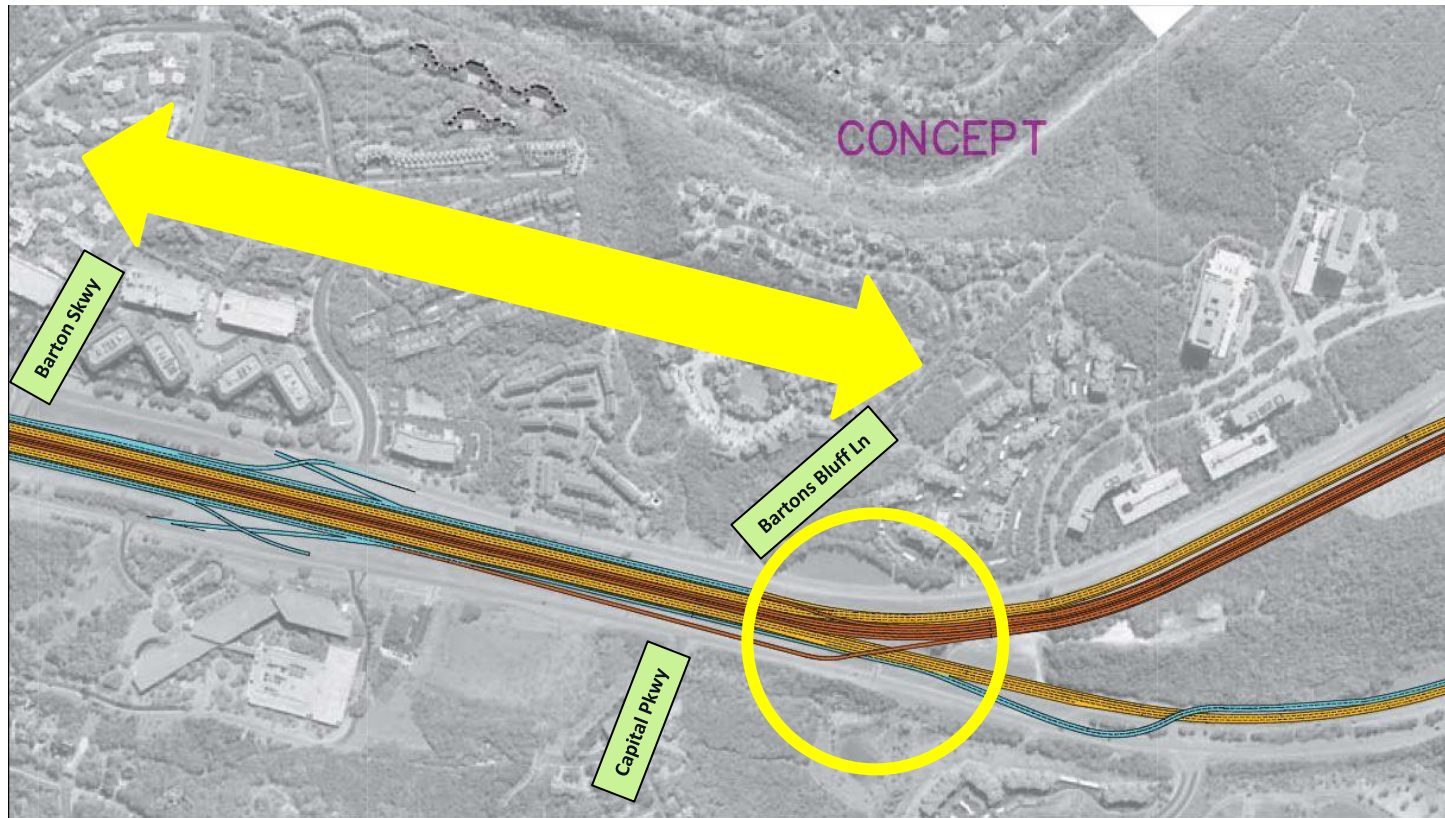


- Eliminate SB overpass by introducing loop ramp from Lake Austin Blvd
- Introduce separated C-D lane to discourage weaving into main lanes
- Downtown express lane access to/from south facilitated south of river

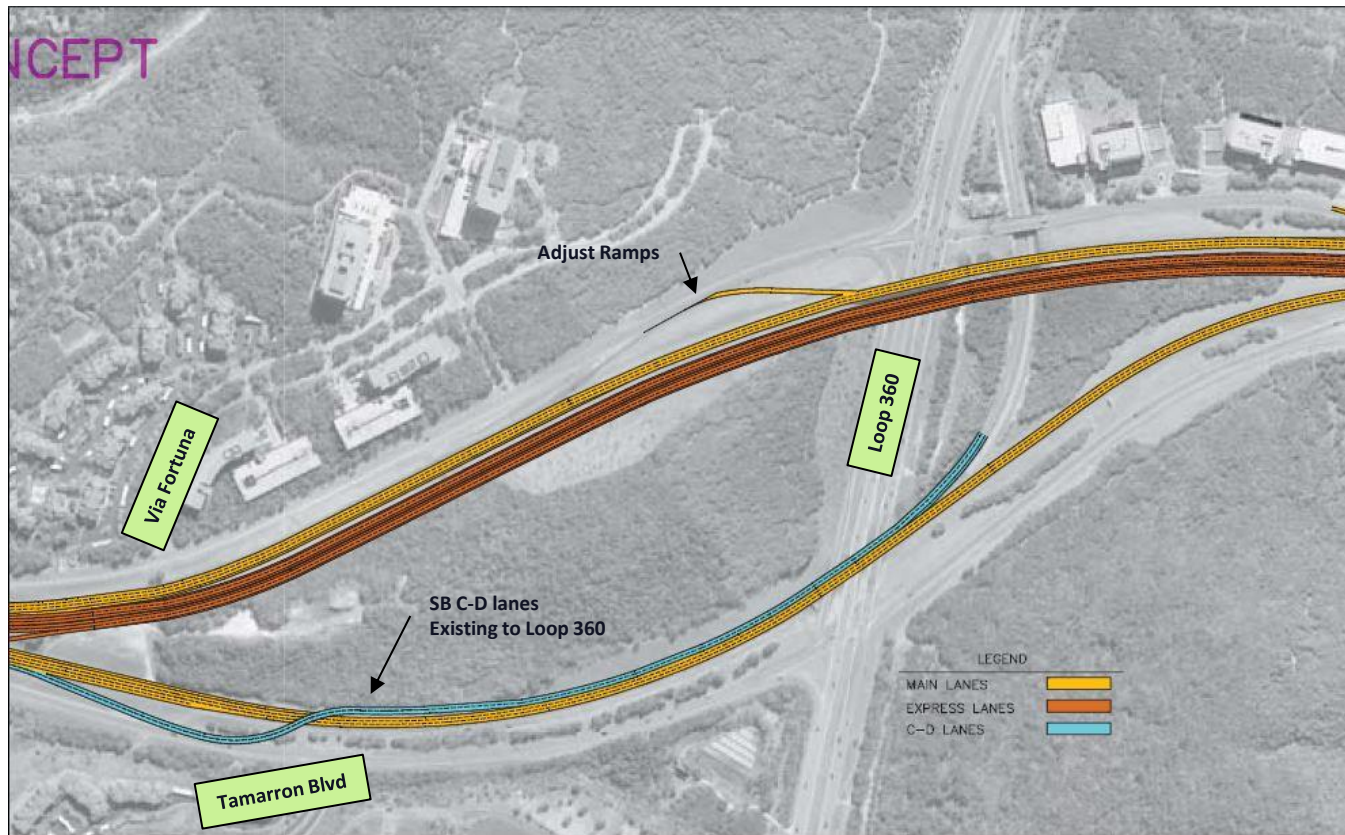




- Remove SB Exit onto Bee Caves and replace with Bridge over Rollingwood Drive to eliminate weaving conflicts when exiting to access Bee Caves
- Requires alternate provision for pedestrians along frontage road
- Consider braided ramps to access NB C-D lanes

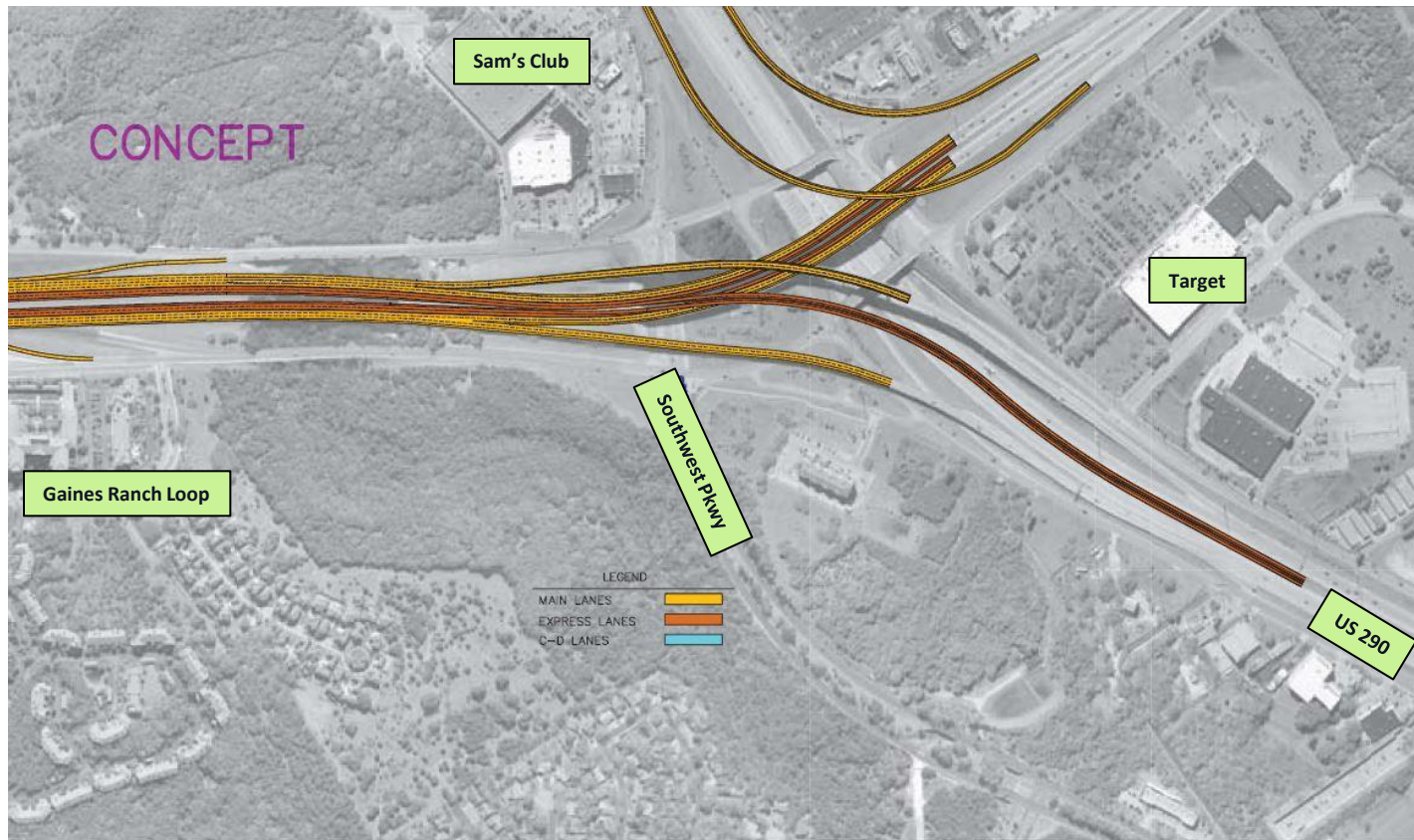


- Maximize use of frontage roads with ramp placement
- Wishbone ramp configuration to facilitate access between express lane and outer C-D lanes for access to downtown
- Address main-lane merge to Loop 360



- Adjust ramps north and south to maximize use of frontage roads and to eliminate main-lane weaving issues
- Introduce two SB C-D lanes exiting onto Loop 360 South/East Bound





- Serve both sides of the Southwest Austin triangle, with two express lanes (one in each direction) serving the MoPac Corridor and two express lanes (one in each direction) serving the US 290 West Corridor to serve existing and proposed transit demand in both corridors