

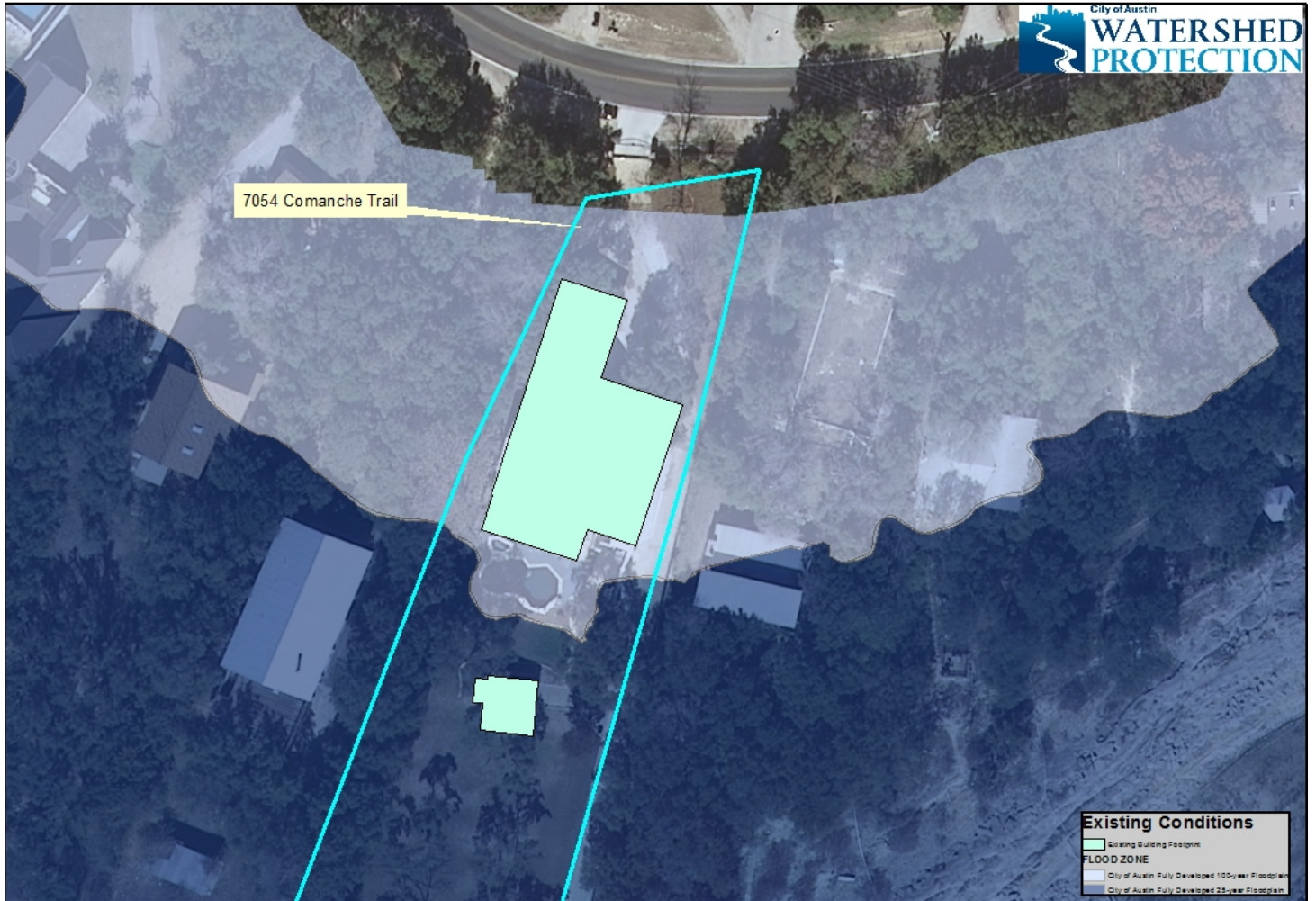
# Backup Information Packet

Concerning a public hearing to consider an ordinance authorizing a floodplain variance to construct a 440 square foot building addition to an existing single family residence, which is entirely in the 100-year floodplain of Lake Travis.

## Site Location Map with Current Floodplains for 7054 Comanche Trail



## Zoomed in Site Location Map at 7054 Comanche Trail



0 10 20 40 60 80 Feet

This product is for informational purposes and may not have been prepared for or be suitable for legal, engineering, or surveying purposes. It does not represent an on-the-ground survey and represents only the approximate relative location of property boundaries.

This product has been produced by the Watershed Protection Department for the sole purpose of geographic reference. No warranty is made by the City of Austin regarding specific accuracy or completeness.



## Zoomed in Site Location Map of Proposed Improvements

