



Facilities

SERVICES

OF AUSTIN

8-14-15

Re: 409 - 413 E. 6th - Nalle Bldg.

Dear Steve,

I have attached 6 drawings with a cover sheet for your approval and use. Per your guidance we show the dimensions we are going to build from. Also, we achieved a 14'-6" setback from the storefront. I have a drawing showing the steel framing section attached so you can see how the framing will be done.

I am assuming we will then be on the agenda for Aug. 24th unless I hear otherwise. If you have any questions please call and discuss. I am happy to come and meet if you are not clear on any of my drawings.

Sincerely,

STEVE SIMON, CFM

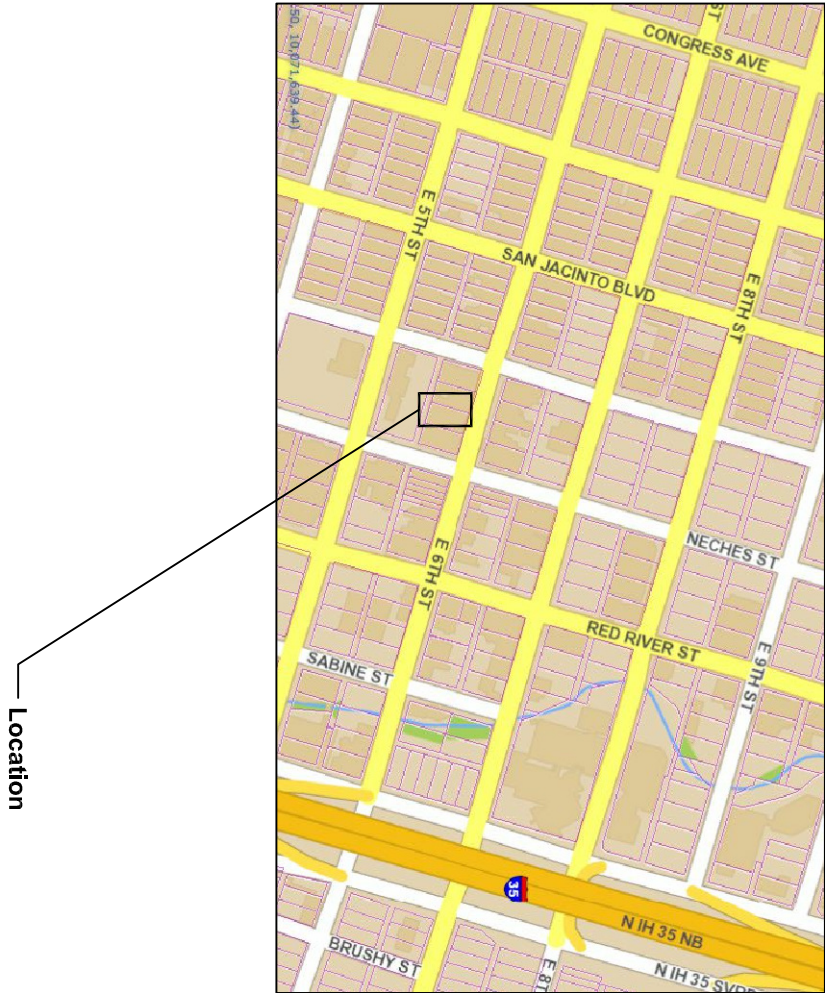
503 E. 6th. St., Suite B
c/o PO Box 684671
Austin, TX. 78768

512-481-0181
512-481-1059 fax
ss@facilityaustin.com
www.facilityaustin.com



409 - 411 - 413 4th Story and Rooftop Addition and Improvements

409, 411, 413 E. 6th st.
Austin, TX. 78701



Space Planning/Engineering -

Facilities Services of Austin
503 E. 6th. st., suite B
Austin, TX. 78701
512-481-0181
ss@facilityaustin.com
www.facilityaustin.com
Steve Simon, CFM

MEP -

EEA Engineers
Structural -

Lester Germanio
512-476-6077

Civil -

Scott Wuest
2007 So. 1st. ste. 103
Aust, TX 78704
512-394-1900

List of Drawings

Cover Sheet
A1 4th Floor
A2 Occupied Roof
A3 Dimensions
A4 Framing study
A5 Isometric



**Facilities
Services
of Austin**
503 E. 6th st., suite B
c/o PO Box 284671
Austin, TX 78768
512-481-0181

The dimensions represented by this plan are based on information and/or architectural drawings submitted to Facilities Services of Austin by the client or his architect. FSA will not be responsible for the accuracy of the architectural drawings in the event that the submitted information and/or drawings do not conform with the actual field dimensions and/ or conditions.

This document, the ideas and designs incorporated herein are and shall remain the property of FSA. This document is not to be used in whole or in part for other than the original intended use, nor is it to be assigned to any third party without written permission from FSA. Copyright FSA- 2004.

Nalle Bldg. Improvements

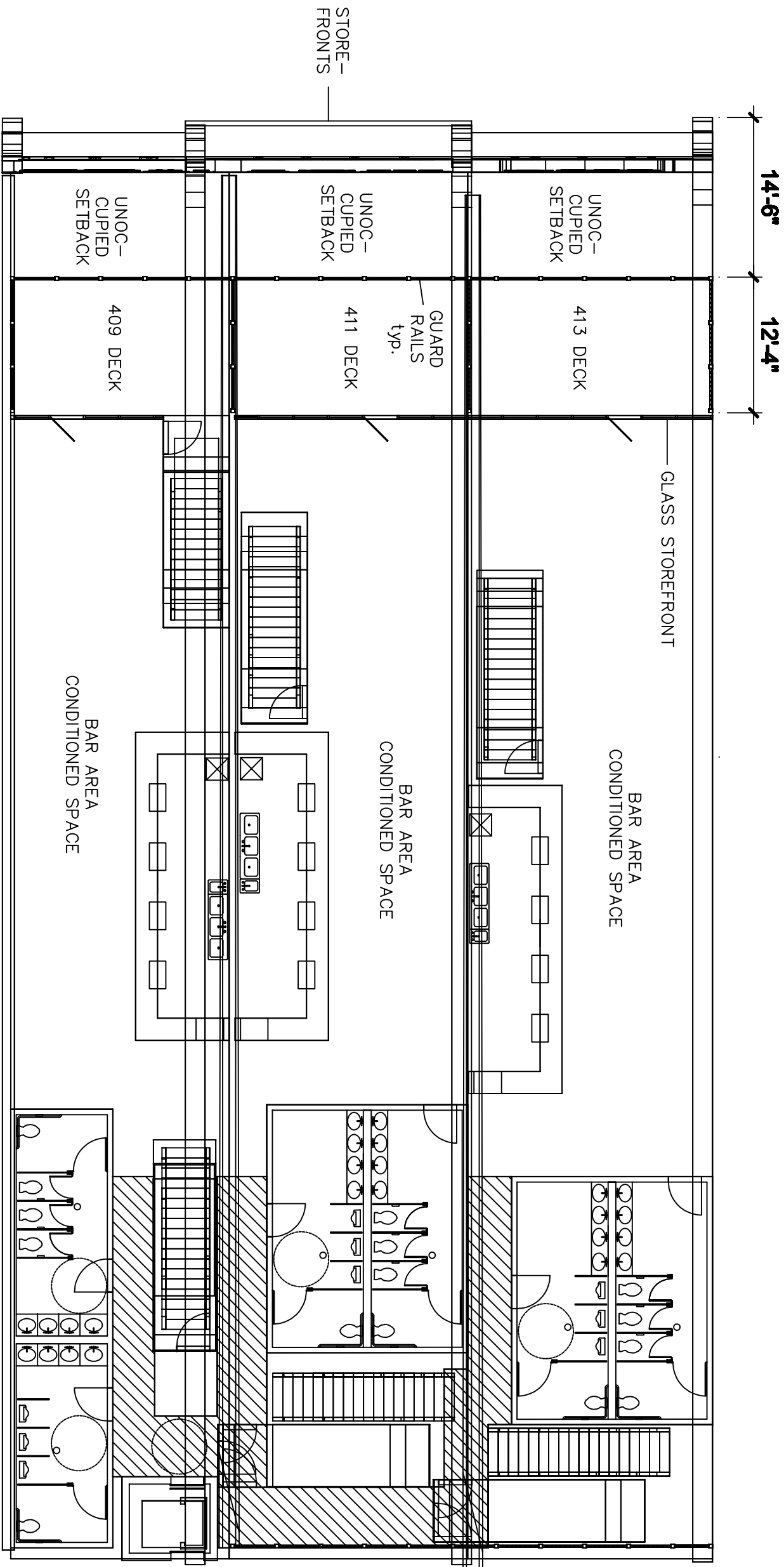
REVISION - 4

DR.BY: - SMS

DATE - 8/14/15

SHEET -

Cover
Sheet



Proposed 4th Floor

3/16" = 1'



**Facilities
Services
of Austin**

503 E. 6th st., suite B
c/o PO BOX 255671
Austin, TX 78765
512-481-0181

The dimensions represented by this plan are based on information and/or architectural drawings submitted to Facilities Services of Austin by the client or its architect. FSA will not be responsible for the accuracy of the architectural drawing in the event that the submitted information and/or drawing do not conform with the actual field dimensions and/or conditions.

This document, the ideas and designs incorporated herein are and shall remain the property of FSA. This document is not to be used in whole or in part for other than the original intended use, nor is it to be assigned to any third party without written permission from FSA. Copyright FSA-2004.

Nalle Bldg. Improvements

REVISION - 4

DR.BY. - SMS

DATE - 8/14/15

SHEET -
A1
**Proposed
4th Floor**



503 E. 6th st., suite B
c/o PO BOX 254671
Austin TX 78766
512-481-0181

The dimensions represented by this plan are based on information and/or architectural drawings submitted to Facilities Services of Austin by the client or its architect. FSA will not be responsible for the accuracy of the architectural drawing in the event that the submitted information and/or drawing do not conform with the actual field dimensions and/ or conditions.

This document, the ideas and designs incorporated herein are and shall remain the property of FSA. This document is not to be used in whole or in part for other than the original intended use, nor is it to be assigned to any third party without written permission from FSA. Copyright FSA- 2004.

Nalle Bldg. Improvements

REVISION - 4

DR.BY: - SMS

DATE - 8/14/15

SHEET -
A2
Occupied
Roof



**Facilities
Services
of Austin**

503 E. 6th st., suite B
c/o PO BOX 255671
Austin, TX 78765
512-481-0181

The dimensions represented by this plan are based on information and/or architectural drawings submitted to Facilities Services of Austin by the client or its architect. FSA will not be responsible for the accuracy of the architectural drawing in the event that the submitted information and/or drawing do not conform with the actual field dimensions and/ or conditions.

This document, the ideas and designs incorporated herein are and shall remain the property of FSA. This document is not to be used in whole or in part for other than the original intended use, nor is it to be assigned to any third party without written permission from FSA. Copyright FSA-2004.

Nalle Bldg. Improvements

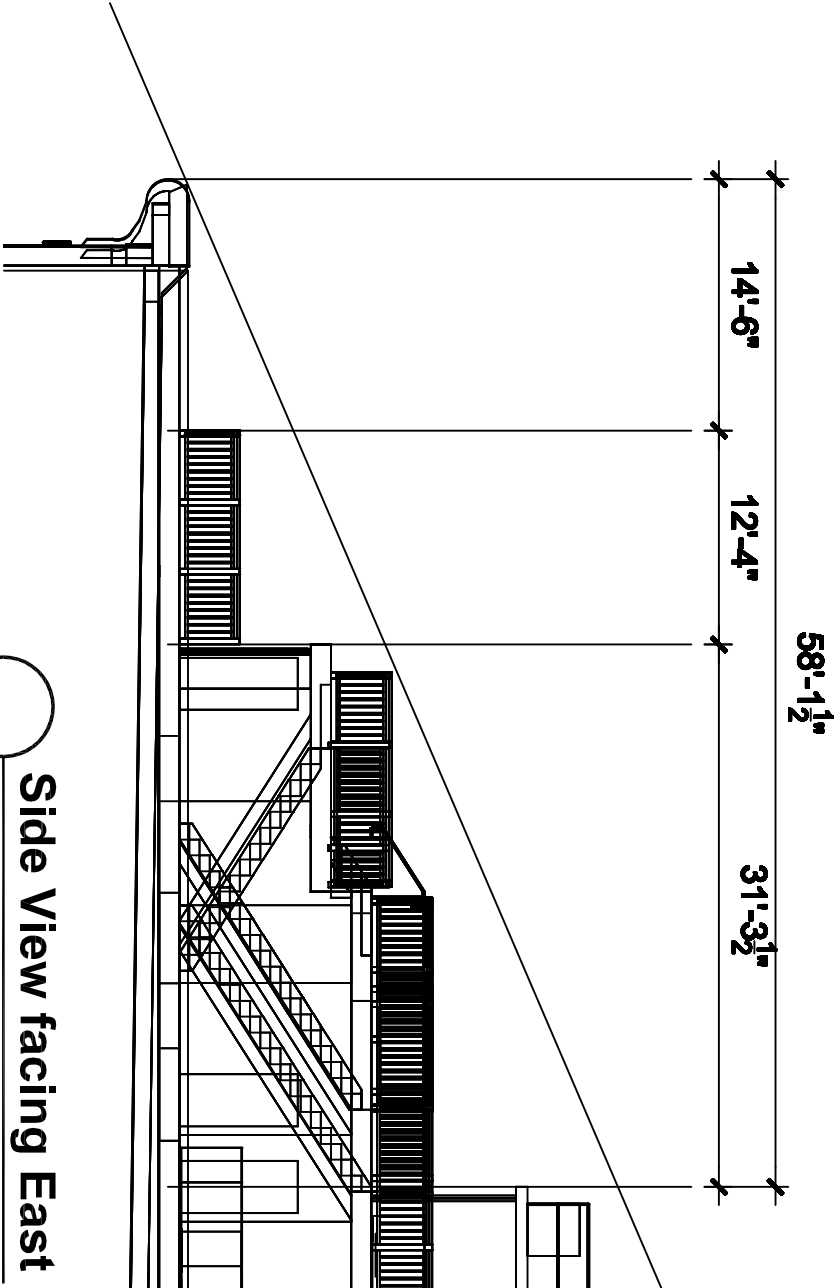
REVISION - 4

DR.BY: - SMS

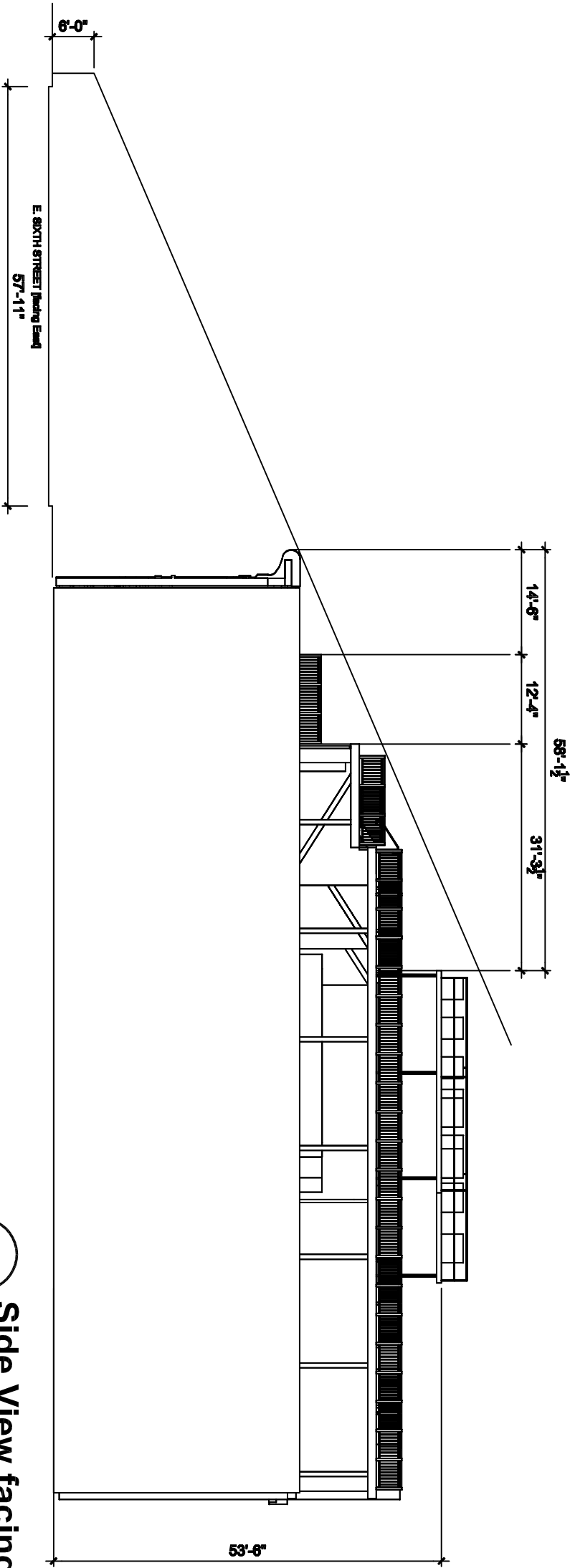
DATE - 8/14/15

SHEET -

A3
Dimensions



Side View facing East
NTS



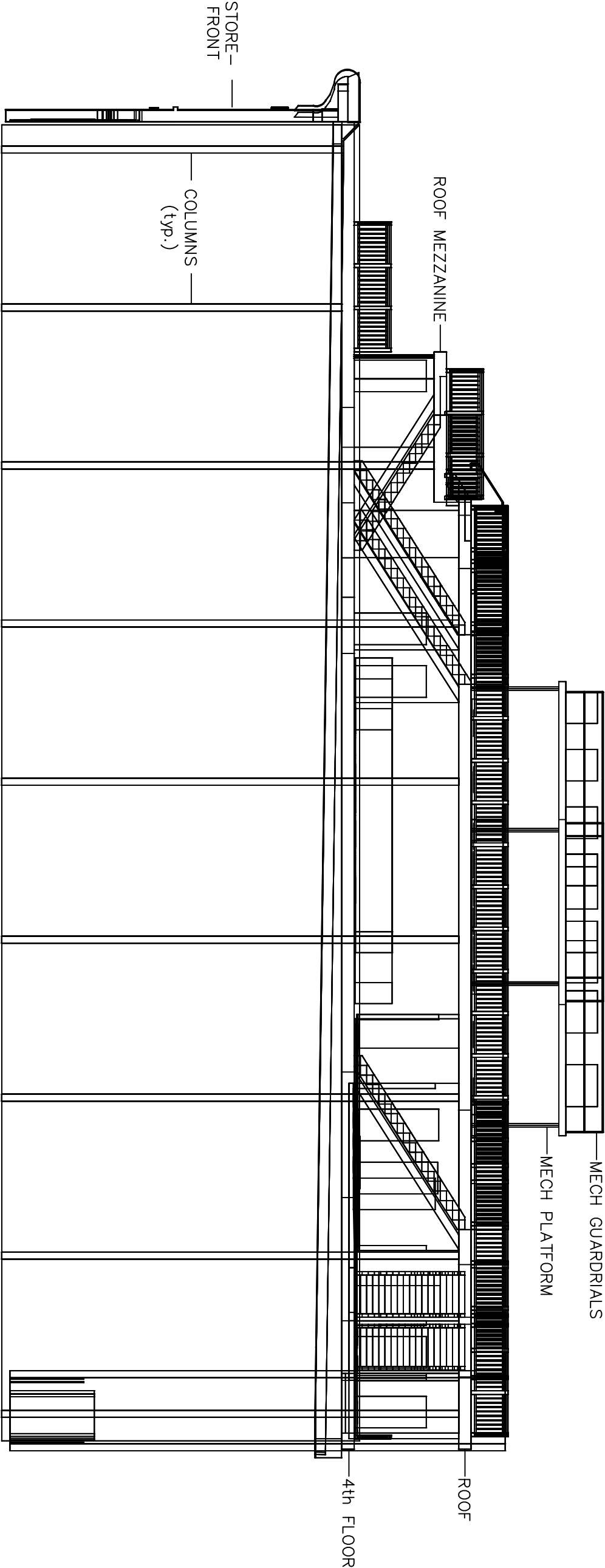
Side View facing East
NTS



**Facilities
Services
of Austin**
503 E. 6th st., suite B
c/o PO BOX 258267
Austin, TX 78765
512-481-0181

The dimensions represented by this plan are based on information and/or architectural drawings submitted to Facilities Services of Austin by the client or his architect. FSA will not be responsible for the accuracy of the architectural drawing in the event that the submitted information and/or drawing do not conform with the actual field dimensions and/ or conditions.

This document, the ideas and designs incorporated herein are and shall remain the property of FSA. This document is not to be used in whole or in part for other than the original intended use, nor is it to be assigned to any third party without written permission from FSA. Copyright FSA- 2004.



Proposed framing
3/16"=1'

Nalle Bldg. Improvements

REVISION - 4

DR.BY: - SMS

DATE - 8/14/15

SHEET -
A4
Structural
Profile