



Environmental Commission

City of Austin's Development Services Tree Division

Michael Embesi

cityarborist@austintexas.gov

512-974-1876

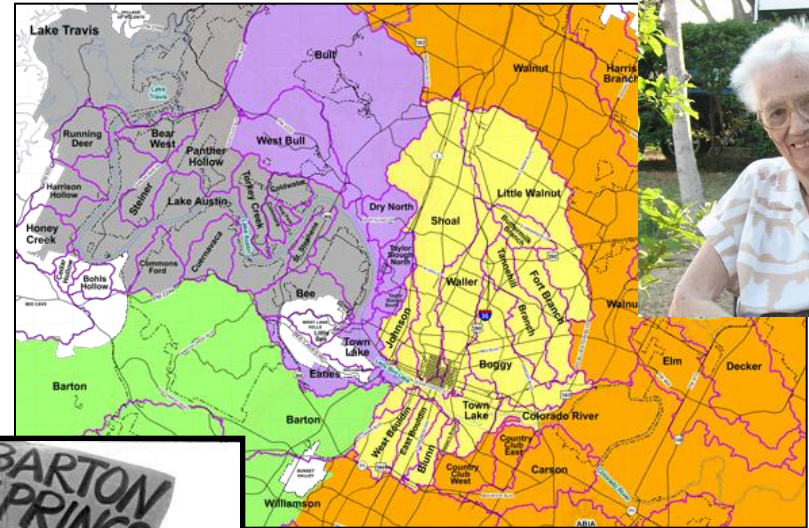
September 16, 2015

Presentation Outline

- **History and Context**
- **Urban Forest Structure & Challenges**
- **Preservation, Planning & Promotion**
- **EV Commission Responsibilities**

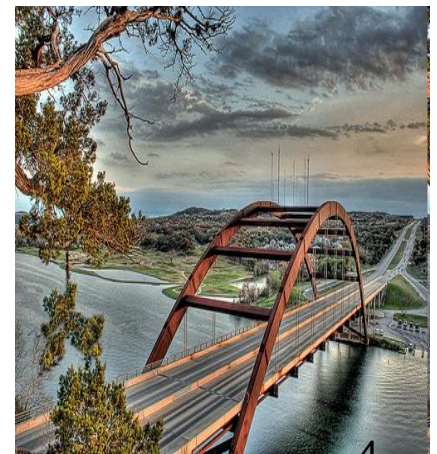


Environmental History and Urban Forest Context



City Tree Initiatives

- **Tree Preservation Ordinance (1983)**
- **Urban Heat Island Resolution (2005)**
- **Tree Taskforce (2006)**
- **Mayor's Climate Change Initiative (2007)**
- **Resolution recognizing urban forest as infrastructure (2008)**
- **Tree Summit (2009)**
- **Heritage Tree Ordinance (2010)**
- **Resolution for Comprehensive Urban Forest Plan (2014)**



Austin's Urban Forest

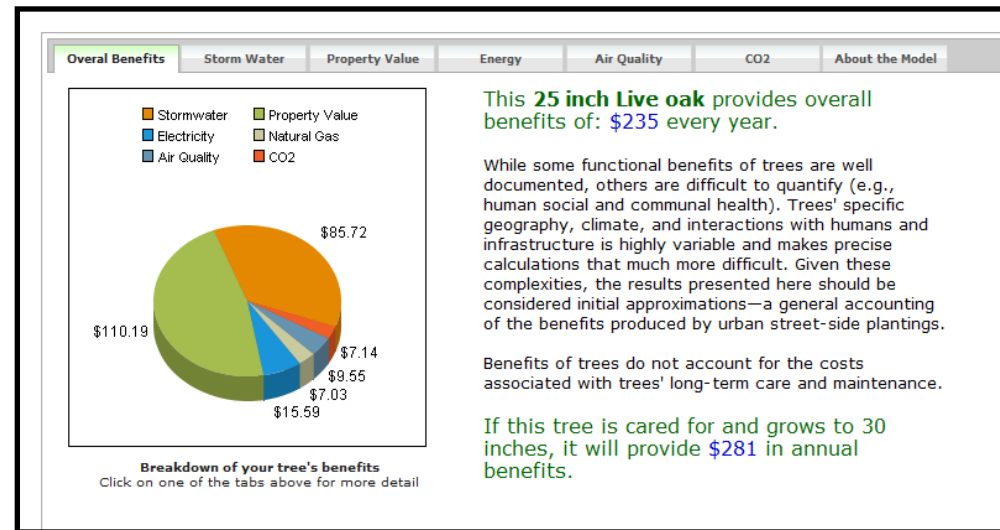
- ✦ Public and private property
- ✦ Manage expectations
- ✦ Expedient and consistent response
- ✦ Continual enhancements
- ✦ Evaluate risks where people live, work, and play

Our vision, in making Austin the most livable city in the country, is to personify Austin's trees by ensuring their preservation, promoting their benefits, and planning their continual relationship as an integral part of our community

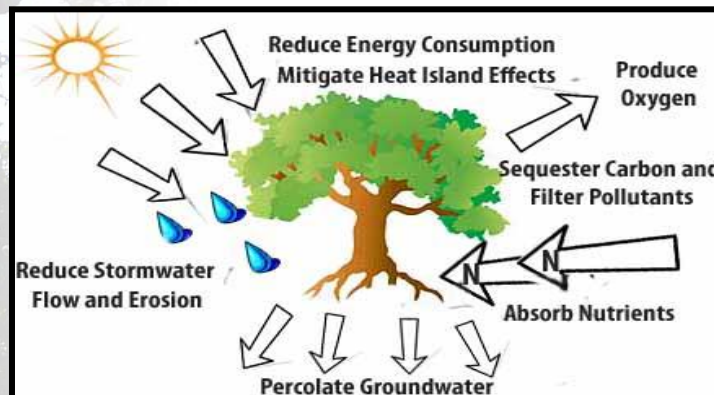
Tree Benefits

Critical to Austin's Quality of Life

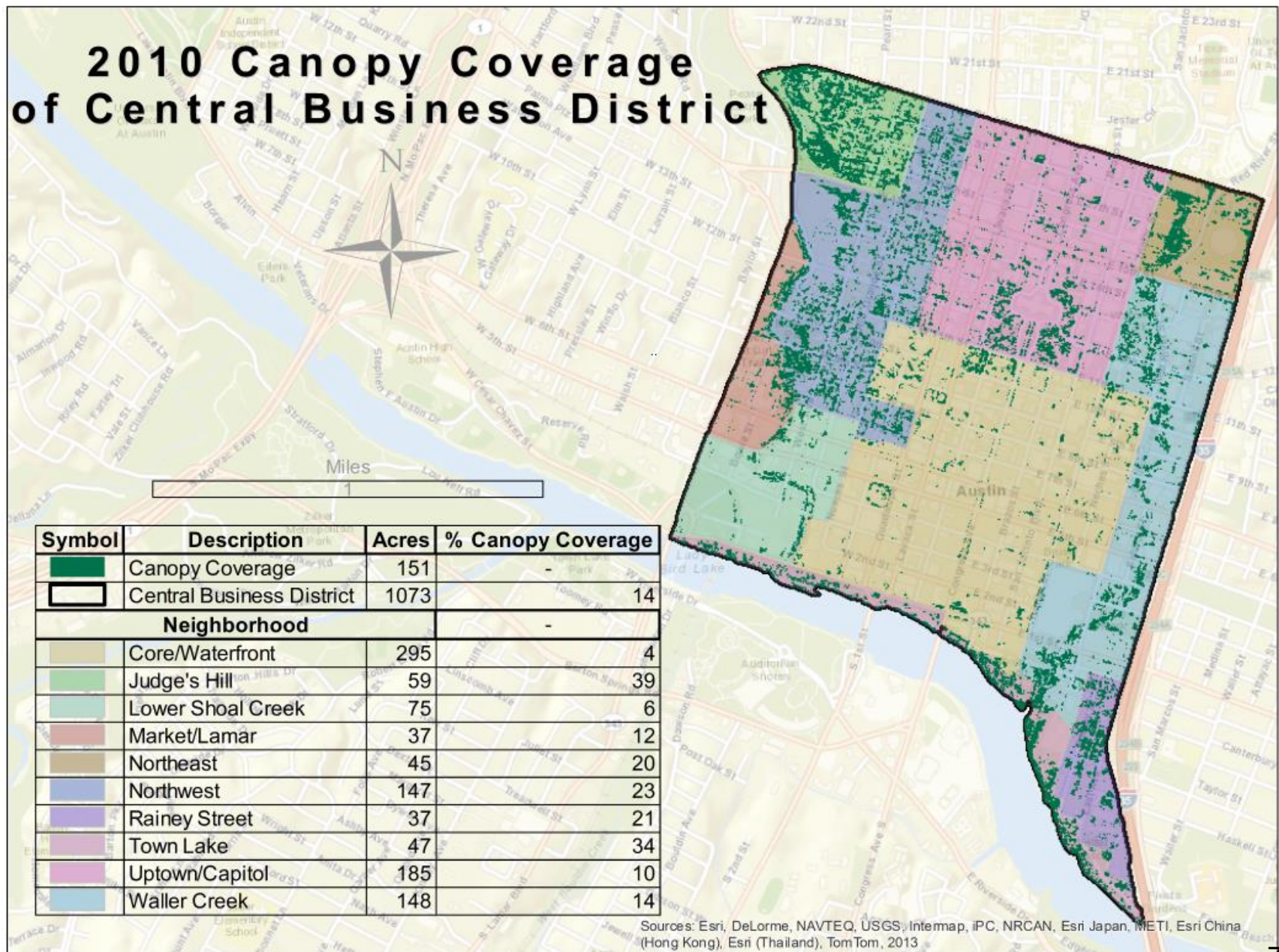
- Cleans air
- Stores and cleans water
- Minimizes erosion
- Sequesters carbon
- Wildlife habitat
- Screen views & noise
- Property value
- Sense of place
- Aesthetics



Infrastructure Which Improves With Time

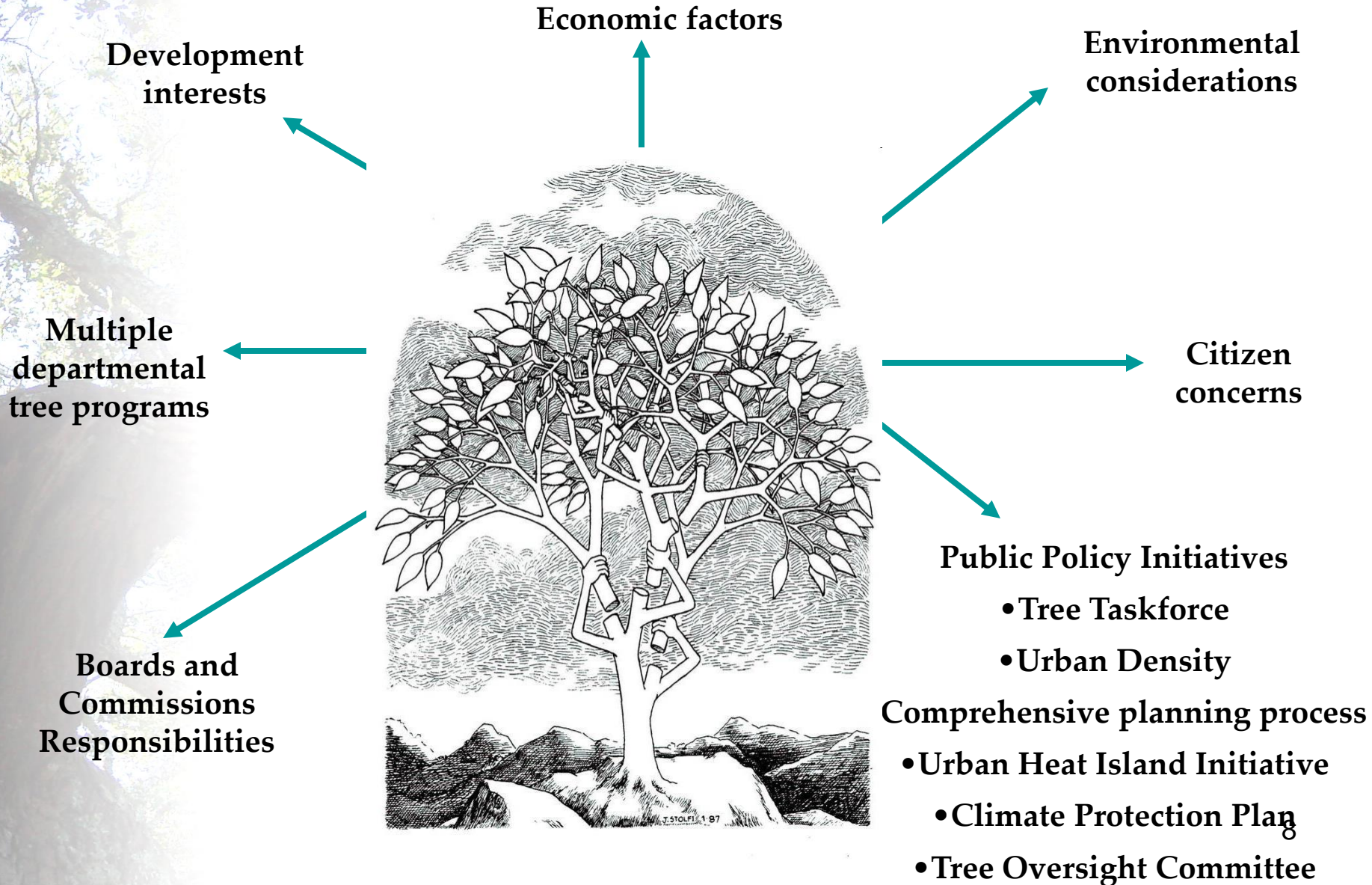


2010 Canopy Coverage of Central Business District



Sources: Esri, DeLorme, NAVTEQ, USGS, Intermap, iPC, NRCAN, Esri Japan, METI, Esri China (Hong Kong), Esri (Thailand), TomTom, 2013

Various Interests



Macro Challenges

- Growth/Urbanism
- Pests and Disease
- Public Relations
- Property Rights
- Expectations



Micro Challenges

- Utility Conflicts
- Public Safety
- Soil Volume and Quality
- Maintenance
- Drainage



Development Services Department Tree Division

**Acting Director
Rodney Gonzales**

**Assistant Director
George Adams**



**Our mission, to support the best managed city in the country,
is to uphold the community's values by providing an effective
and fair system to plan, preserve and replenish trees**



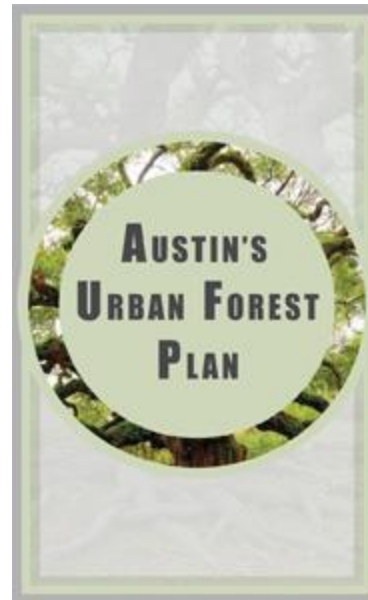
City-Wide Plans

IMAGINEAUSTON
Vibrant. Livable. Connected.

CODENEXT
SHAPING THE AUSTIN WE IMAGINE



Complete Streets



Urban Forest Plan



Urban Trails Master Plan₃

Tree Planting

- Reforesting
- Voluntary
- Development
- Diversification
- Challenges



Regulatory Jurisdiction

- Tree Preservation
- Tree Protection
- Tree Replacement



TREE & ROOT PROTECTION ZONE

Per City of Austin code (Chapter 25-8, Subchapter B, Article 1) this protective device is to remain in place for the entirety of the development project and illegal removal is subject to fines and work suspensions. Additional information can be obtained at the:
City Arborist (512-974-1876)
web site (<http://www.ci.austin.tx.us/trees>).

Zona de Protección del Árbol y las Raíces el dispositivo protector debe quedarse en el lugar para la totalidad del proyecto de la construcción. Para información adicional, contacta la Arborista Municipal (512) 974-1876 o http://www.ci.austin.tx.us/trees/trees_spanish.htm.



Levels of Tree Ordinance Protection



8" and larger

- Required to be surveyed on commercial site plan submittals



19" and larger are PROTECTED SIZE TREES

- All species are protected
- Tree permit is required for impacts or removal (residential and public)



24" and larger can be HERITAGE TREES

- Only specific species qualify
- Requires a variance for removal or impacts that exceed code requirements
- Variances can be administrative
- Greater penalties for unpermitted impacts



30" and larger HERITAGE TREES

- Proposed variances must go through the public process

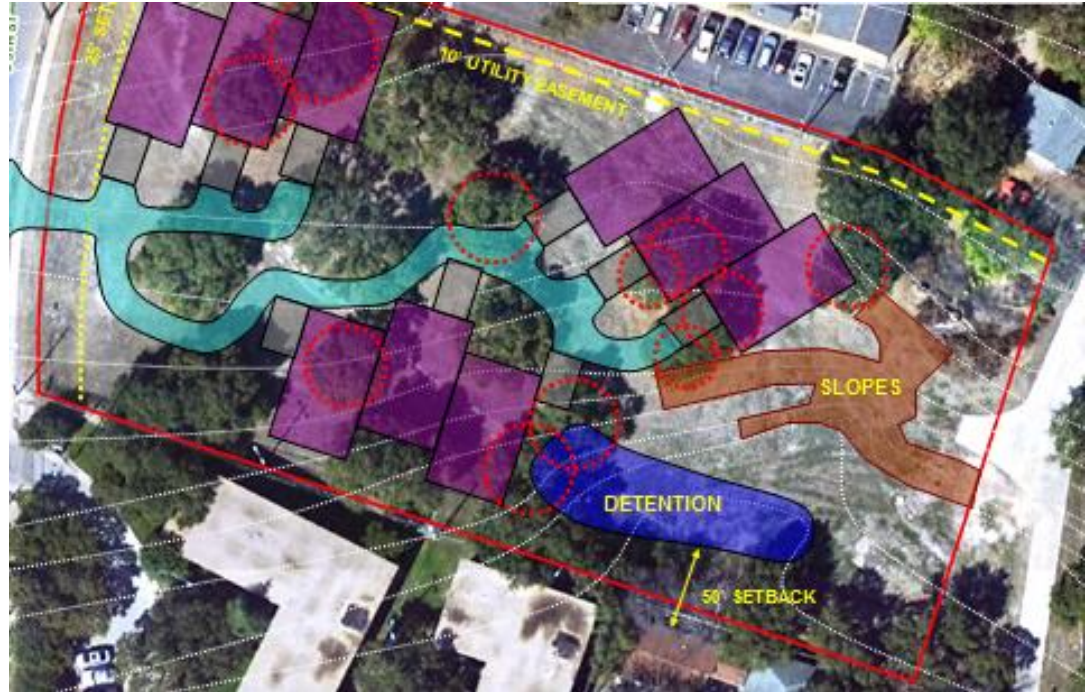
Stakeholders

- **Citizens & Stewards**
- **Federal & State Partners**
- **Boards & Commissions**
- **City Council & Upper Management**
- **Design Professionals**
- **City Reviewers & Inspectors**
- **Neighborhood Groups**



EV Commission Tree Oversight

- **Development applications impacting trees**
- **Tree Regulatory Appeals and Variances**
- **City Arborist Report (e.g. Heritage trees, development statistics)**
- **Urban Forester State of the Environment, Report Card (e.g. PW, WPD, AE), and Comprehensive Urban Forest Plan**
- **Urban Forest Grant Program Requests**
- **Champion tree opportunities**



Thank You

