

# 6<sup>th</sup> Street Historic District Proposed Arch

Historic Landmark Commission  
Certificate of Appropriateness  
Committee

9-14-2015

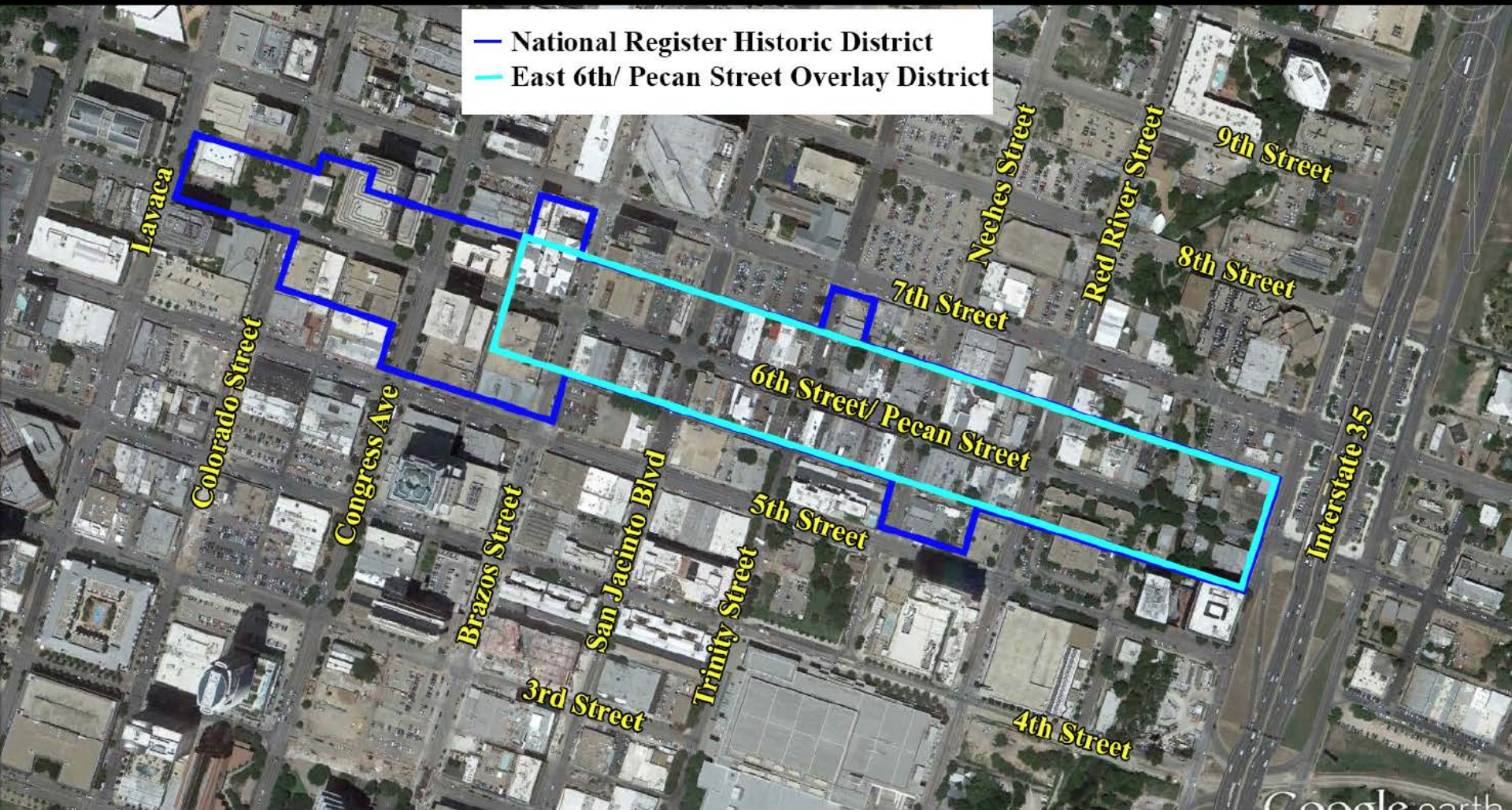
# Request

---

- Application
  - Formal Certificate of Appropriateness not submitted
  - Agenda item to review proposed conceptual arch
- Request
  - Approve conceptual arch design
  - Architects and engineers can move forward with design

# Location of Historic District

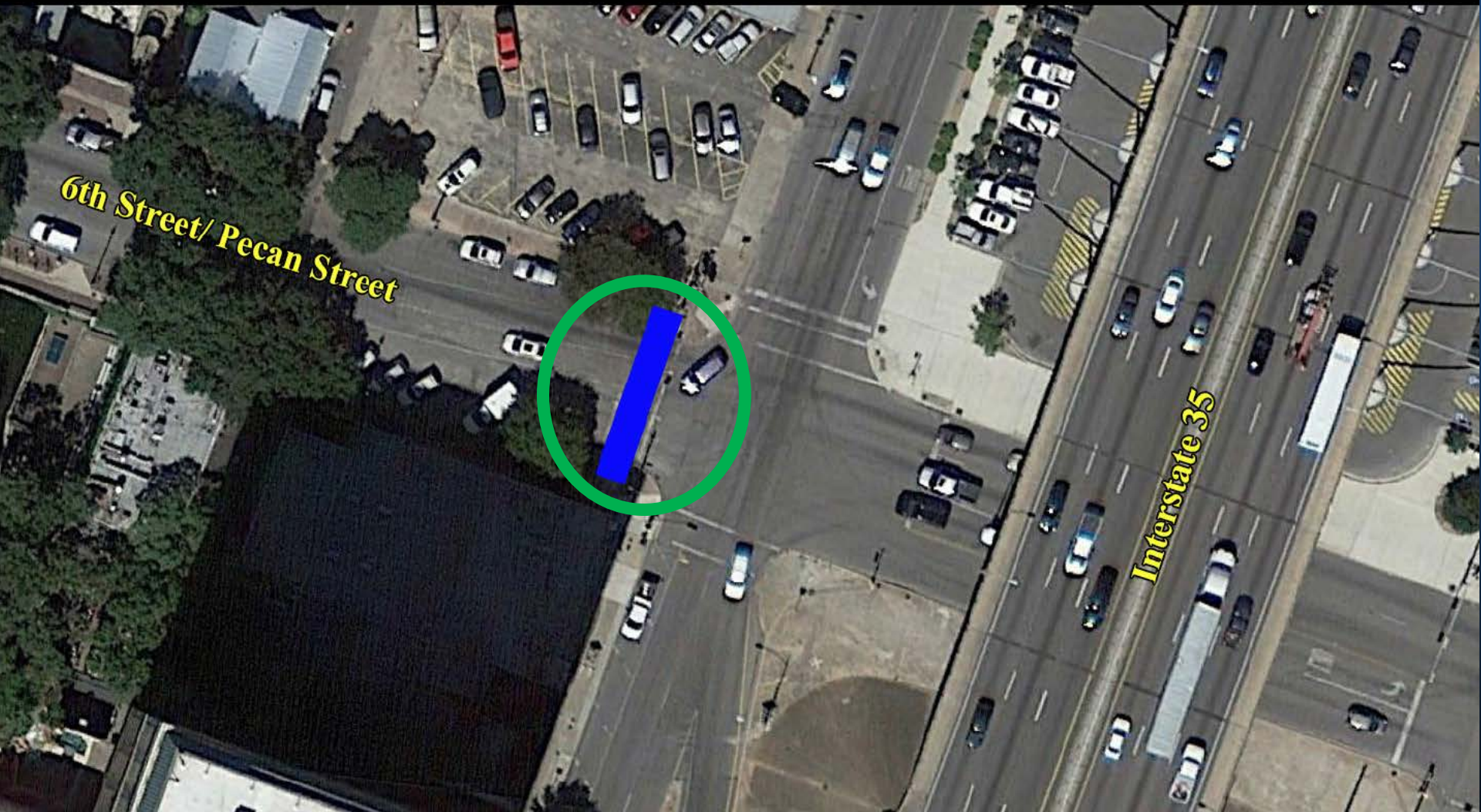
## Historic and East 6th Street/Pecan Street District





# Location of Arch

## Arch Location



# Arch Placement

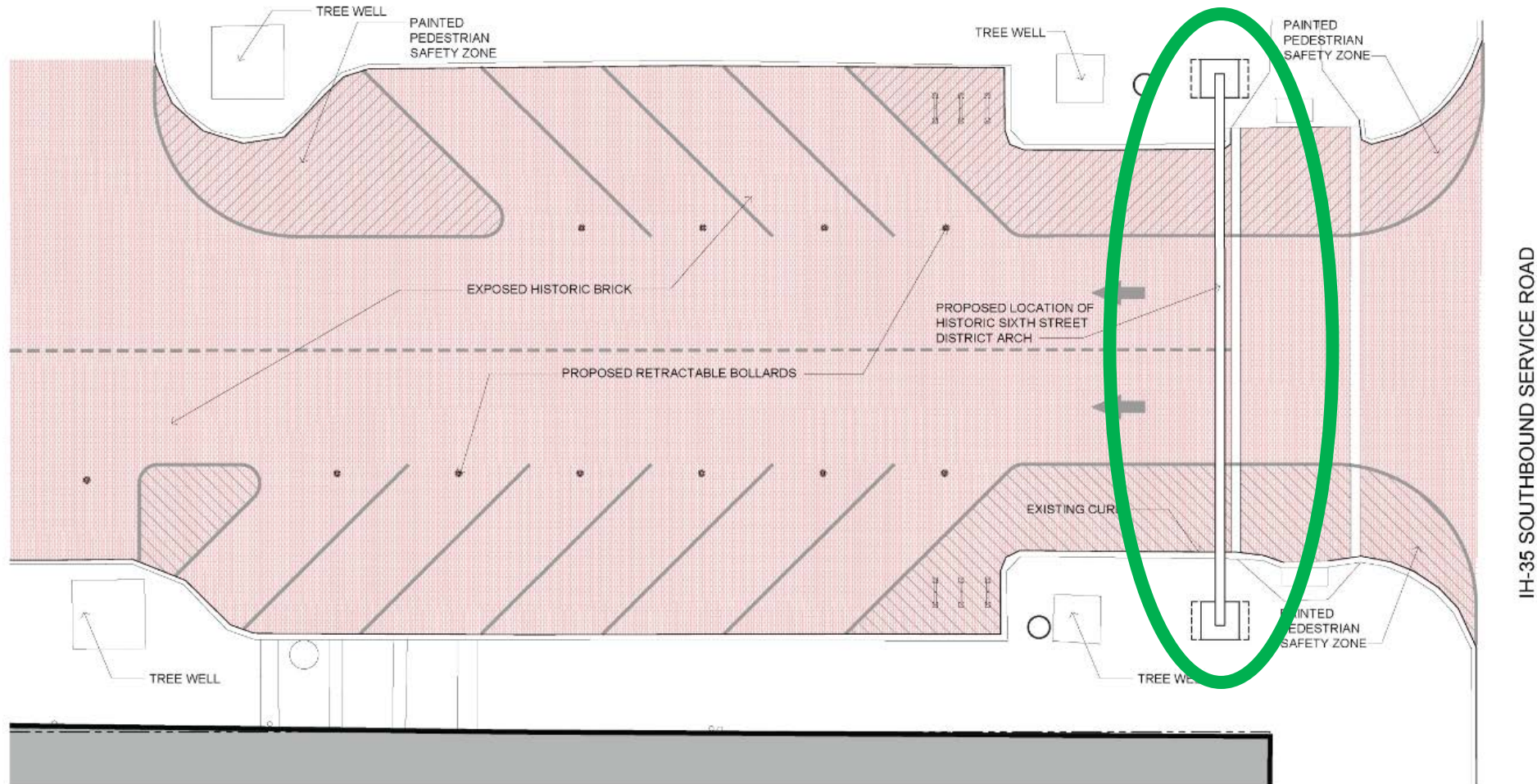
---

- Location
  - On 6<sup>th</sup> street near frontage road to IH35
  - Pillars in existing tree wells
  - Possible plaque with designation
- Reason for location
  - Avoiding the underground utilities
  - Prime entrance to district
  - Distance from traffic



# Location of Arch

IH-35 INTERSECTION WITH HEAD-IN PARKING ON BOTH SIDES - PROPOSED GATEWAY ARCH SHOWN



# Looking West down 6th Street 2/2014





# South sidewalk of 6<sup>th</sup> St 2/2014



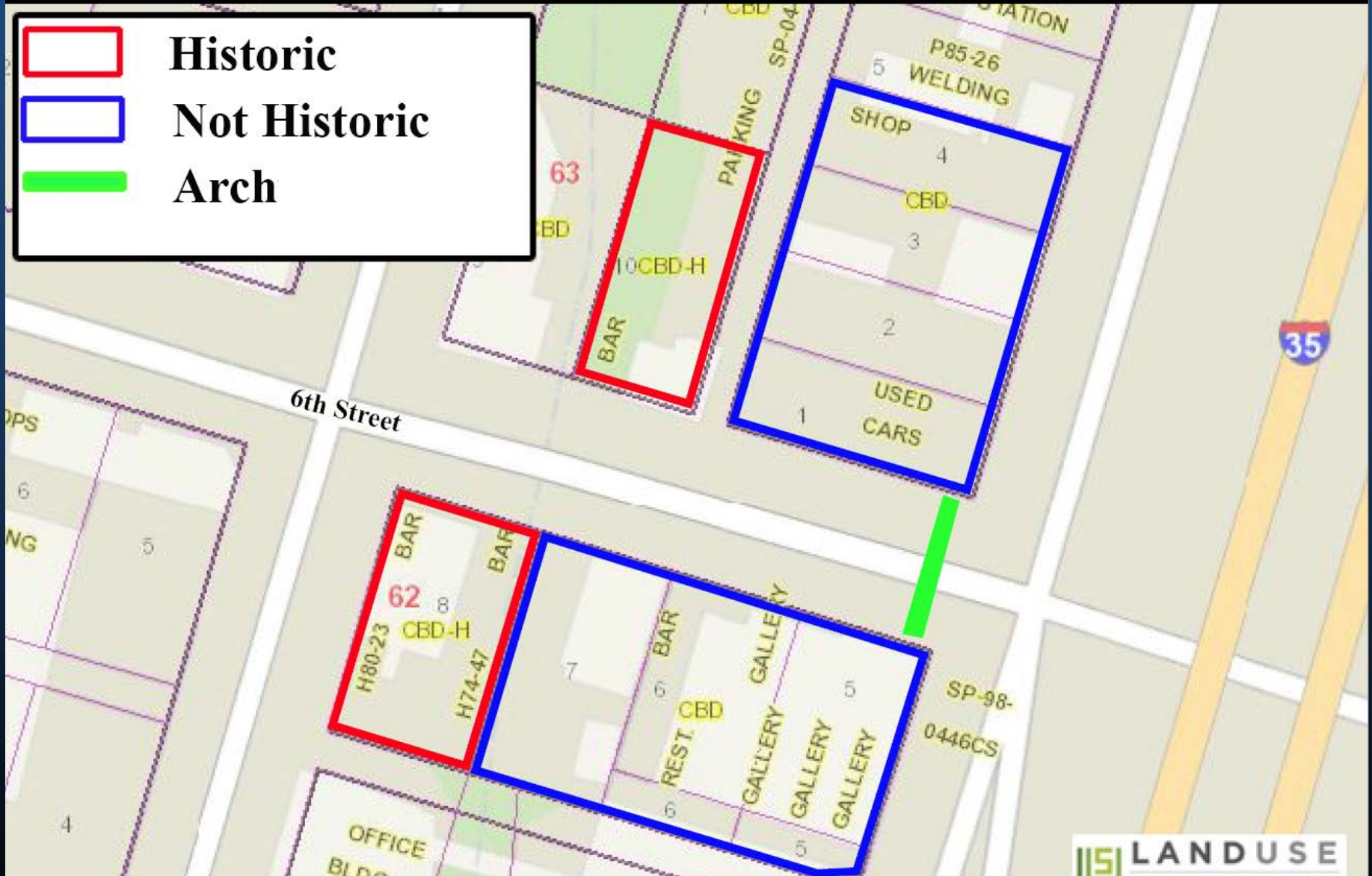


# North sidewalk of 6<sup>th</sup> St 2/2014



# Location of Historic Structures

## 6th Street Historic Structures





# Arch Vision Presented 5-11-15

---



# Committee Recommendations 5-11-15

---

- Certificate of Appropriateness Review Committee
  - Support for arch over East 6<sup>th</sup> Street
  - Reviewed arch vision:
    - Too heavy and dense
    - Buildings diminished by the scale of arch
  - Requests:
    - Arch should blend in with historically simple architecture of buildings
    - Must evoke a sense of place and time
    - Distinct parts - signage separate from pillars
    - Ensure arch does not detract from buildings
    - Pillars can be articulated to human proportion



# Playhouse Square— Cleveland, OH





# Gas Lamp District - San Diego, CA

---





# Little Italy - San Diego, CA

---



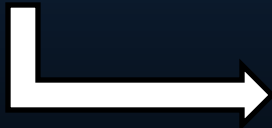
# Reno, NV



Original



Current





# Galveston, TX



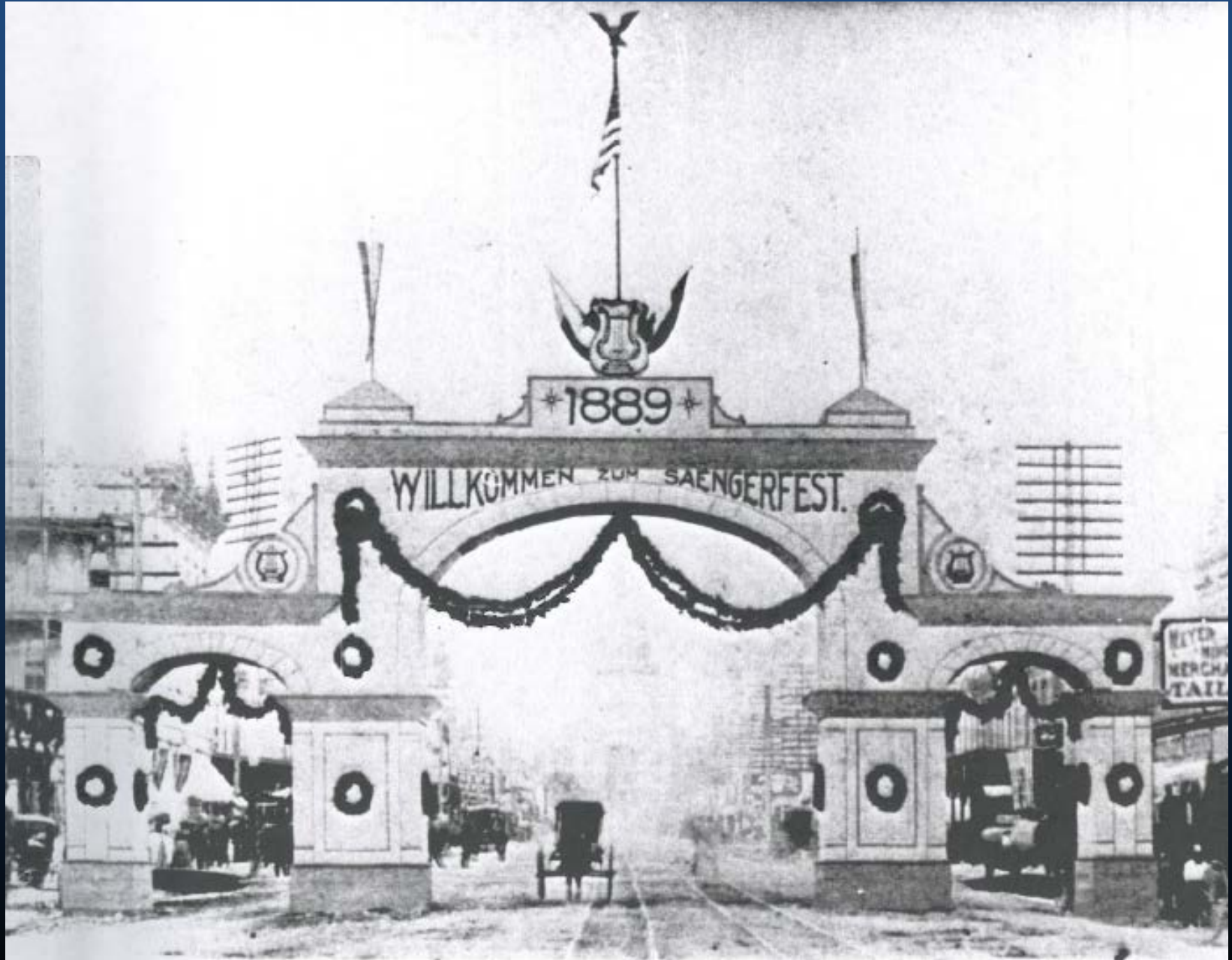
# Hemisfair Park – San Antonio, TX

---



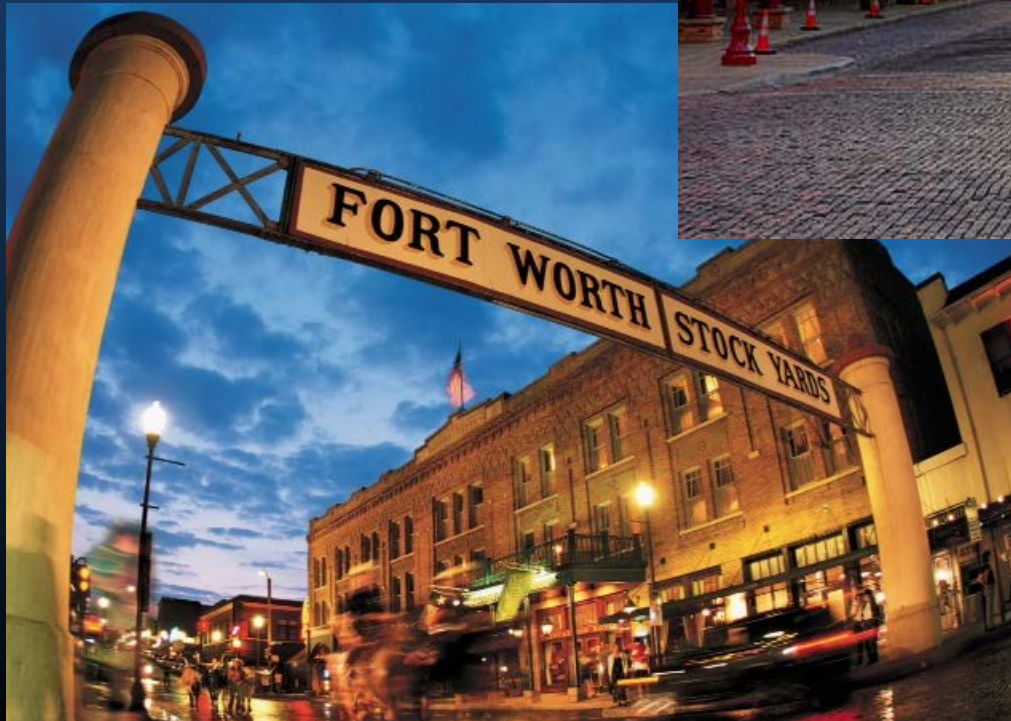


# Historic Arch on Congress

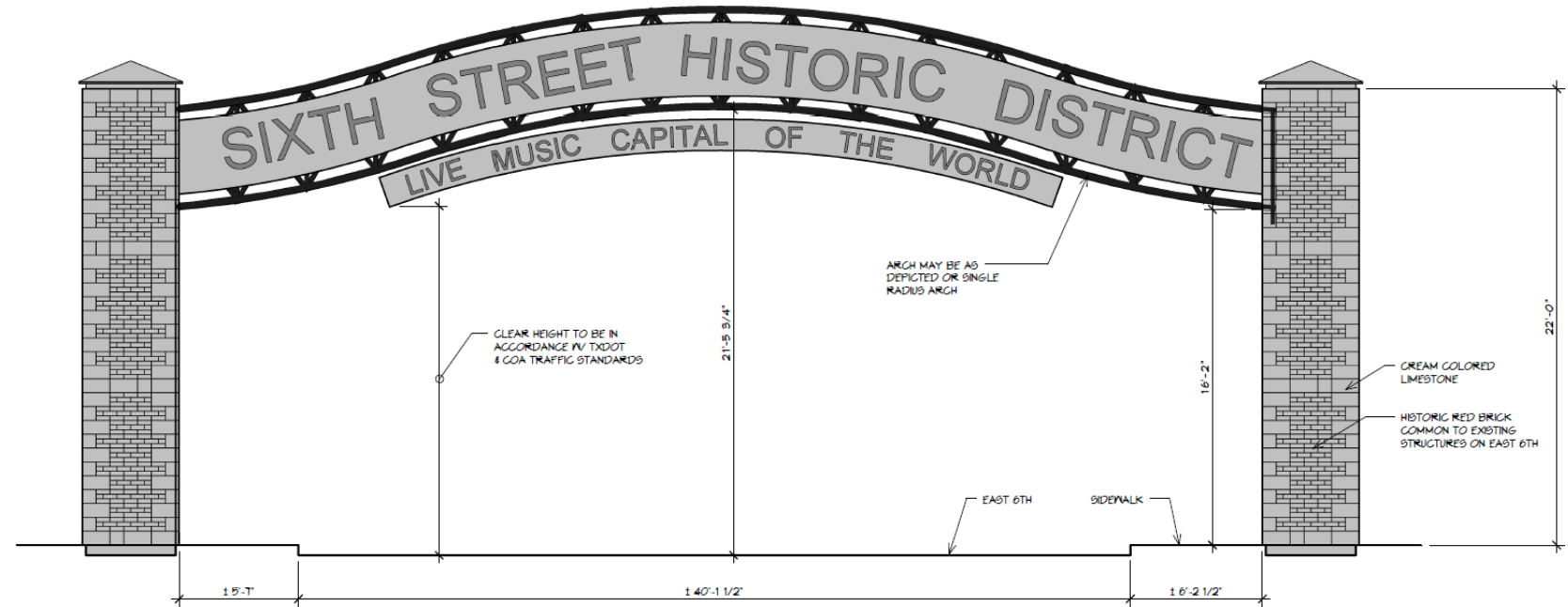
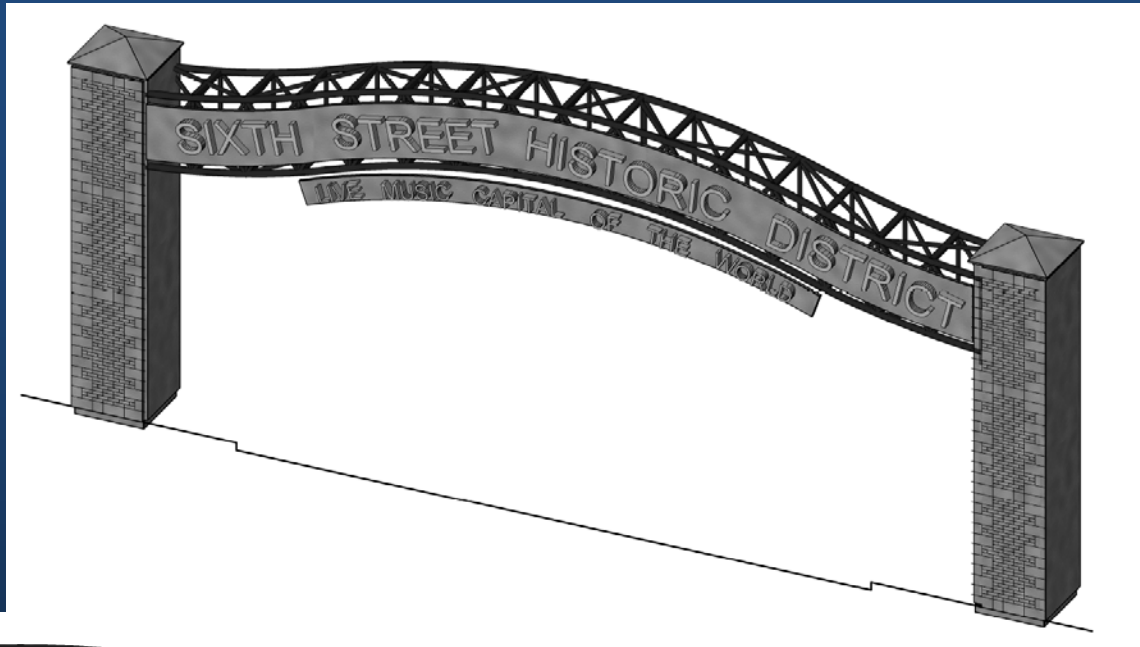




# Stock Yards Fort - Worth, TX



# Revised Arch Vision – Option 1





# Arch Details

---

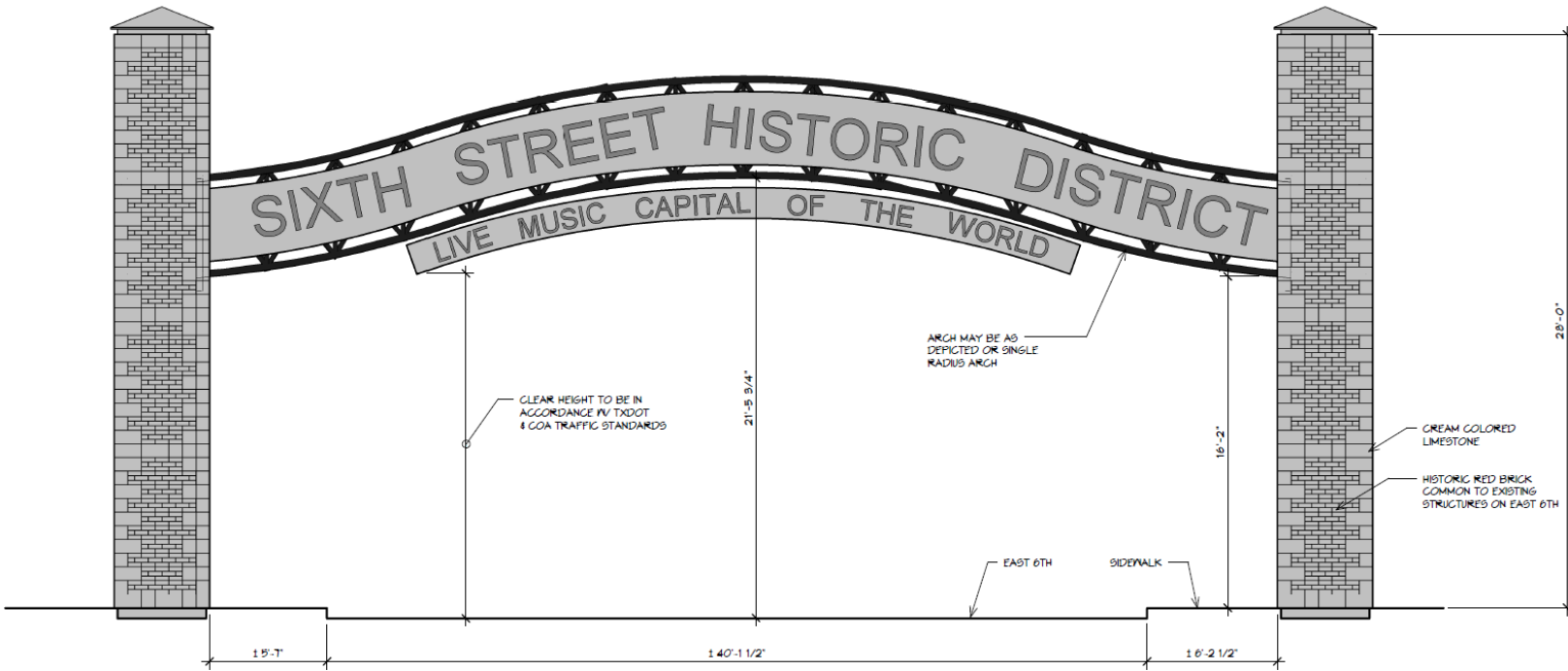
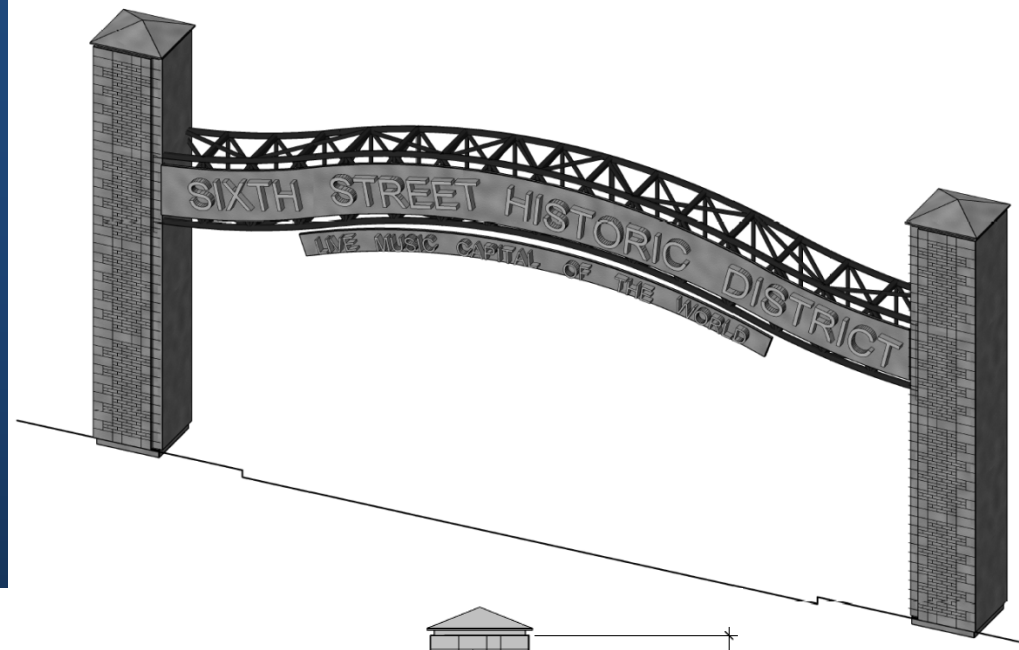
- Size:
  - Height from road to bottom of arch = 21' 5"
  - Pillar height = 22'
  - Width = 51' 11"
- Material
  - Structural steel, cast-in-place concrete structure, limestone, red fire brick with Austin common brick accent

# Revised Arch Vision – Option 1





# Revised Arch Vision – Option 2



# Arch Details

---

- Size:
  - Height from road to bottom of arch = 21' 5"
  - Pillar height = 28'
  - Width = 51' 11"
- Material
  - Structural steel, cast-in-place concrete structure, limestone, red fire brick with Austin common brick accent



# Revised Arch Vision – Option 2



# Revised Arch Vision – Option 1





# Revised Arch Vision – Option 2



# Conclusion

---

- Questions?
- Recommendations?
- Next Steps
- Thank you!