

183 South Project

New Ways To Get Moving

Justin Word, Director of Project Management
Central Texas Regional Mobility Authority
September 2, 2015

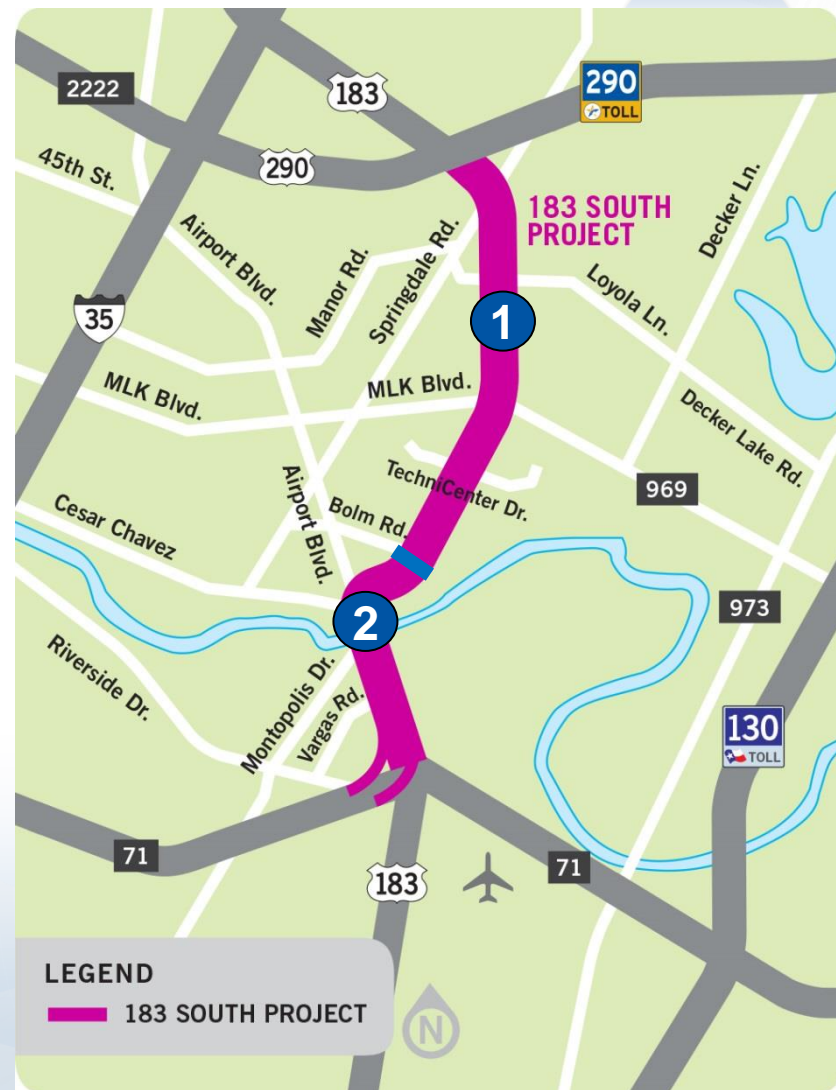


CENTRAL TEXAS
Regional Mobility Authority

183 SOUTH PROJECT OVERVIEW



- **Project Limits**
 - US 290 to SH 71
- **Project Length**
 - 8 miles
- **Developer Cost**
 - \$582 million
- **Construction Phasing**
 - **Phase 1** –
US 290 to Bolm Road
 - **Phase 2** –
Bolm Road to SH 71



ANTICIPATED PROJECT SCHEDULE



2015

2016

2017

2018

2019

2020

2021

SPRING
Begin Construction

Phase 1
Open to
Traffic

FALL
Final Design Begins

Full
Project
Open To
Traffic



WHAT ARE WE BUILDING?

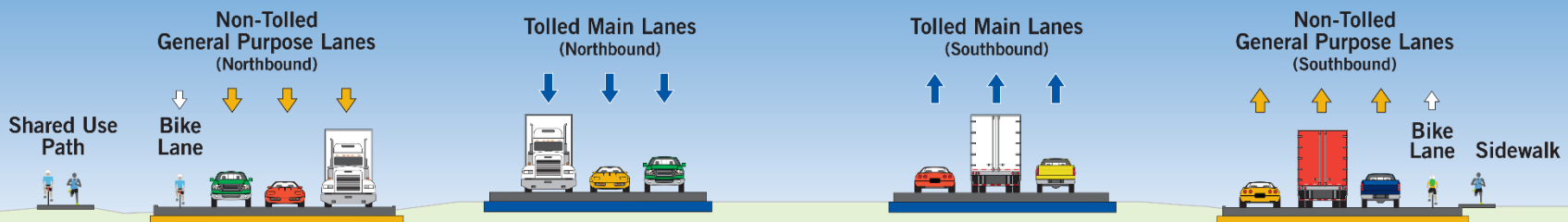


A new tolled expressway with three lanes in each direction and three non-tolled general purpose lanes in each direction

WHAT EXISTS TODAY



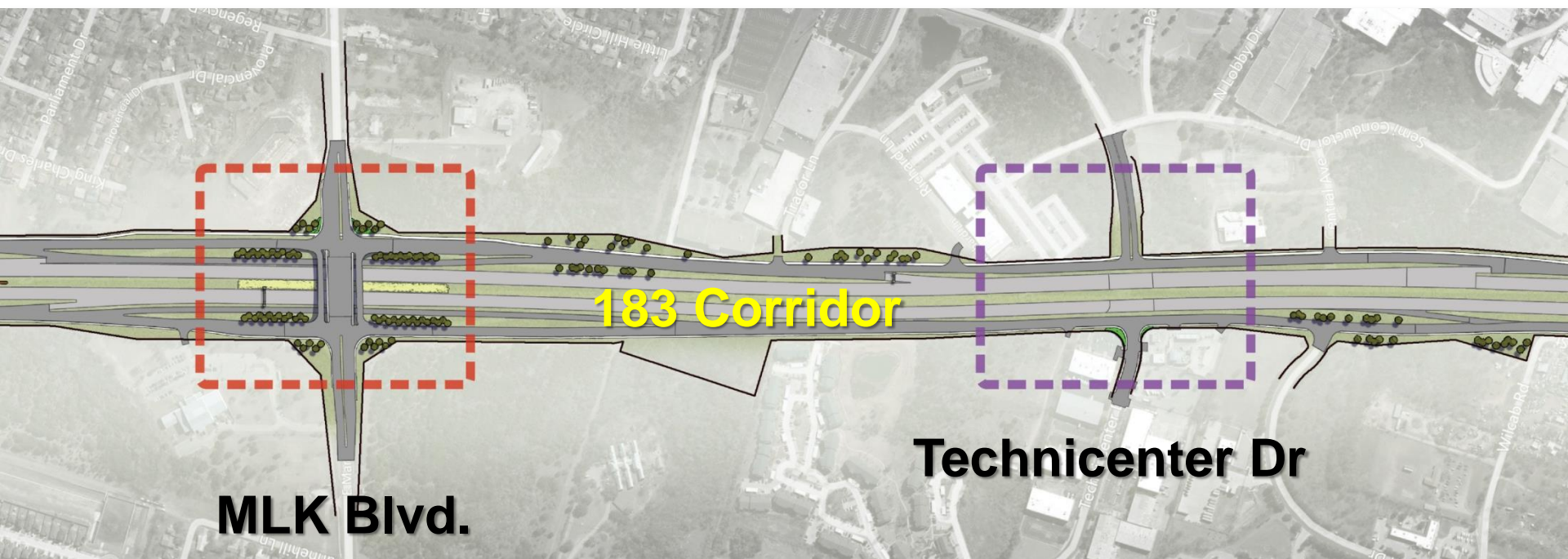
WHAT WE ARE BUILDING



CHANGE IS ON THE WAY



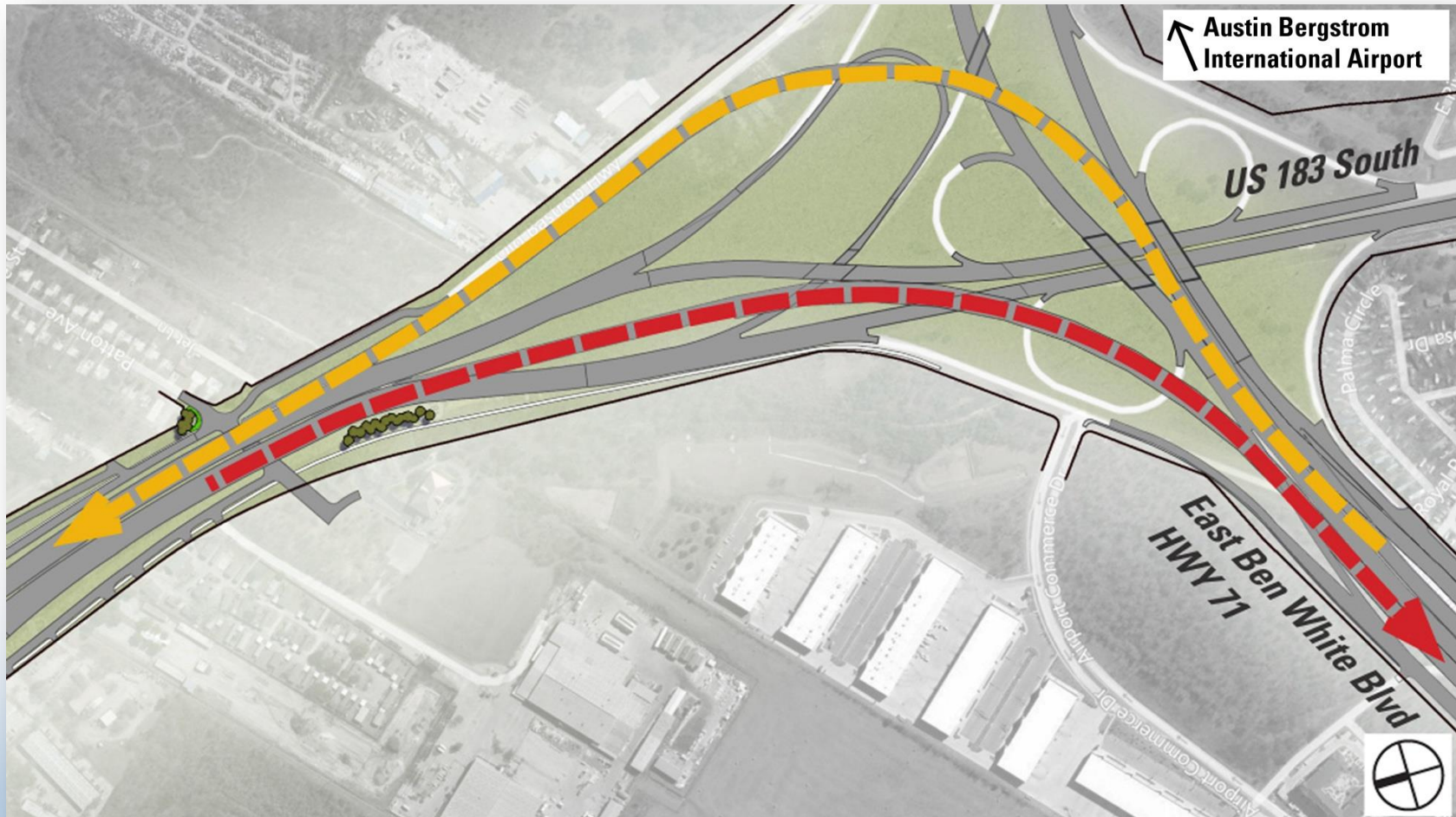
- **Overpass Reconstruction:** Springdale Road, MLK Boulevard, Airport Boulevard and Montopolis Drive
- **Cross Street Removal:** Technicenter Drive, Bolm Road, 51st Street, and Vargas Street



IMPROVED ACCESS TO SH 71



- Construction of flyovers ramps at SH 71



BICYCLE AND PEDESTRIAN FACILITIES



- **Mobility Authority's commitment to bicycle / pedestrian improvements**
- Approx \$25 MM invested overall in 183 South



RECREATIONAL IMPROVEMENTS

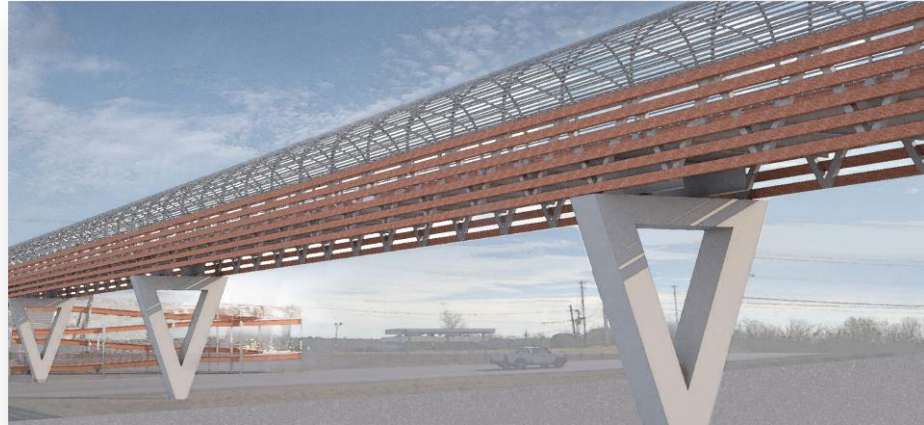


- **Trailhead at Colorado River**
- Approx \$1.5 MM invested in the Colorado River Trailhead





- **Aesthetic enhancements are a major element of the project**
- Bridges and concrete structures will have unique design
- Significant landscaping will be added to all major intersection



KEEPING THE COMMUNITY INFORMED



- **The Mobility Authority will use a number of tools to keep residents and drivers informed about project progress and travel impacts**
 - Twitter
 - Website
 - 24/7 Project Hotline
 - Email/Text Alerts
 - E-newsletter
- **Dedicated Outreach Staff**



VISIT US AT WWW.183SOUTH.COM

PROJECT PARTNERS



CENTRAL TEXAS
Regional Mobility Authority



The Mobility Authority works with our local project partners to implement transportation solutions, especially the Texas Department of Transportation and the City of Austin



CENTRAL TEXAS
Regional Mobility Authority

QUESTIONS?
