



1 Energy RCA

*Austin Energy Utility Oversight Committee
September 24, 2015*

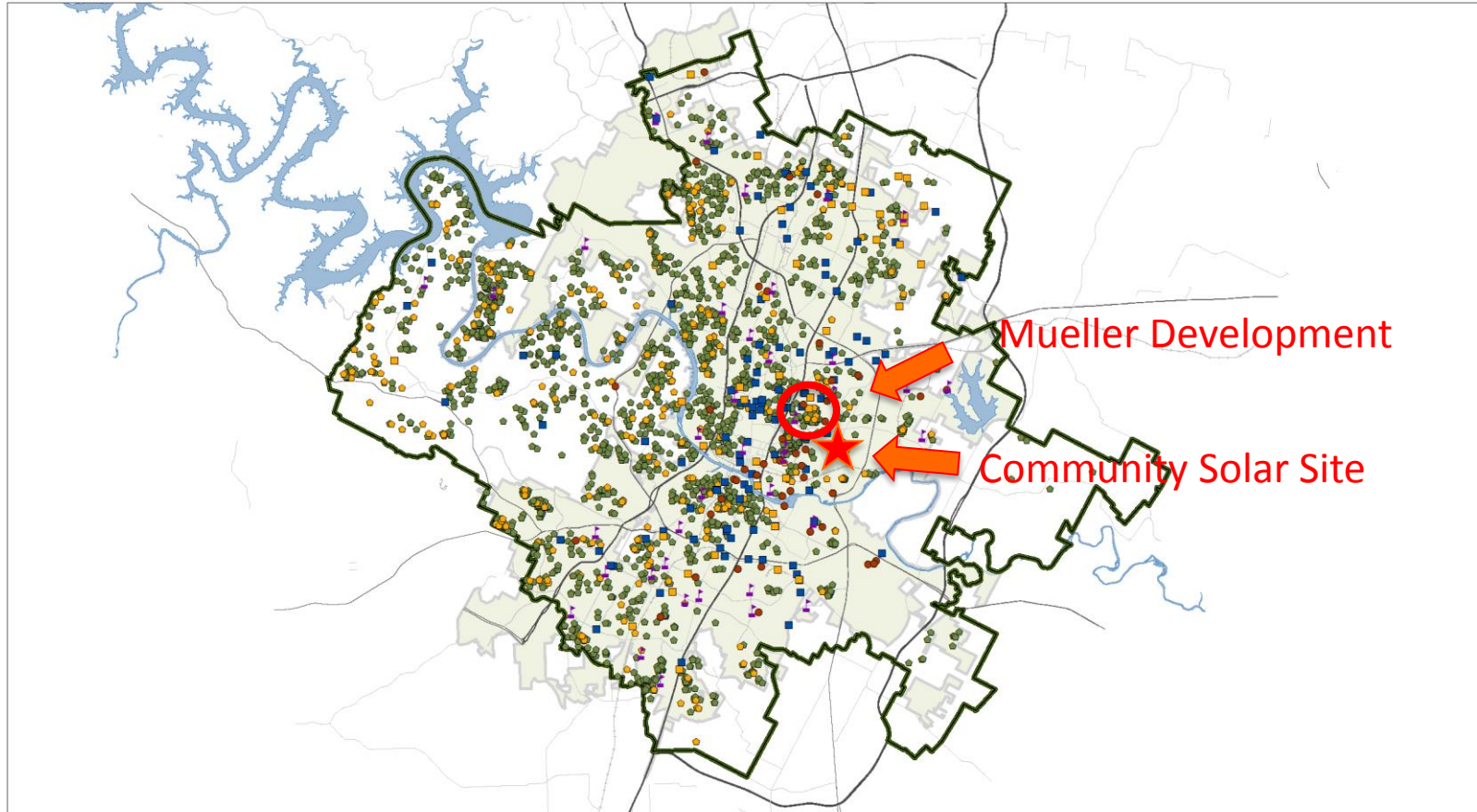
Austin Energy's Goals - 2025



Plan Attribute	2025 Goal
Renewable (as % of total annual demand)	55%
Energy Efficiency	900 MW
Solar Power – Utility-Scale	750 MW
Solar Power – Local (contingent upon affordability)	200 MW
Local Storage	10 MW
Competitive	Lower 50 th percentile in ERCOT
Affordability	2% limit in annual increases

Distributed Solar In AE Territory

(As of February 2014)



Approx. 20 MW of PV in pipeline



- | | | |
|---------------------------------|-------------------------------------|--------------------------------------|
| School, Application Complete | Commercial, Application Complete | Residential, Application Complete |
| Municipal, Application Complete | Commercial, Work Completion Pending | Residential, Work Completion Pending |

This product is for informational purposes and may not have been prepared for or be suitable for legal, engineering, or surveying purposes. It does not represent an on-the-ground survey and represents only the approximate relative location of property boundaries. This product has been produced by the City of Austin for the use of its residents. No warranty is made by the City of Austin regarding specific accuracy or completeness.



Austin Energy

February 2014

Solar Locations

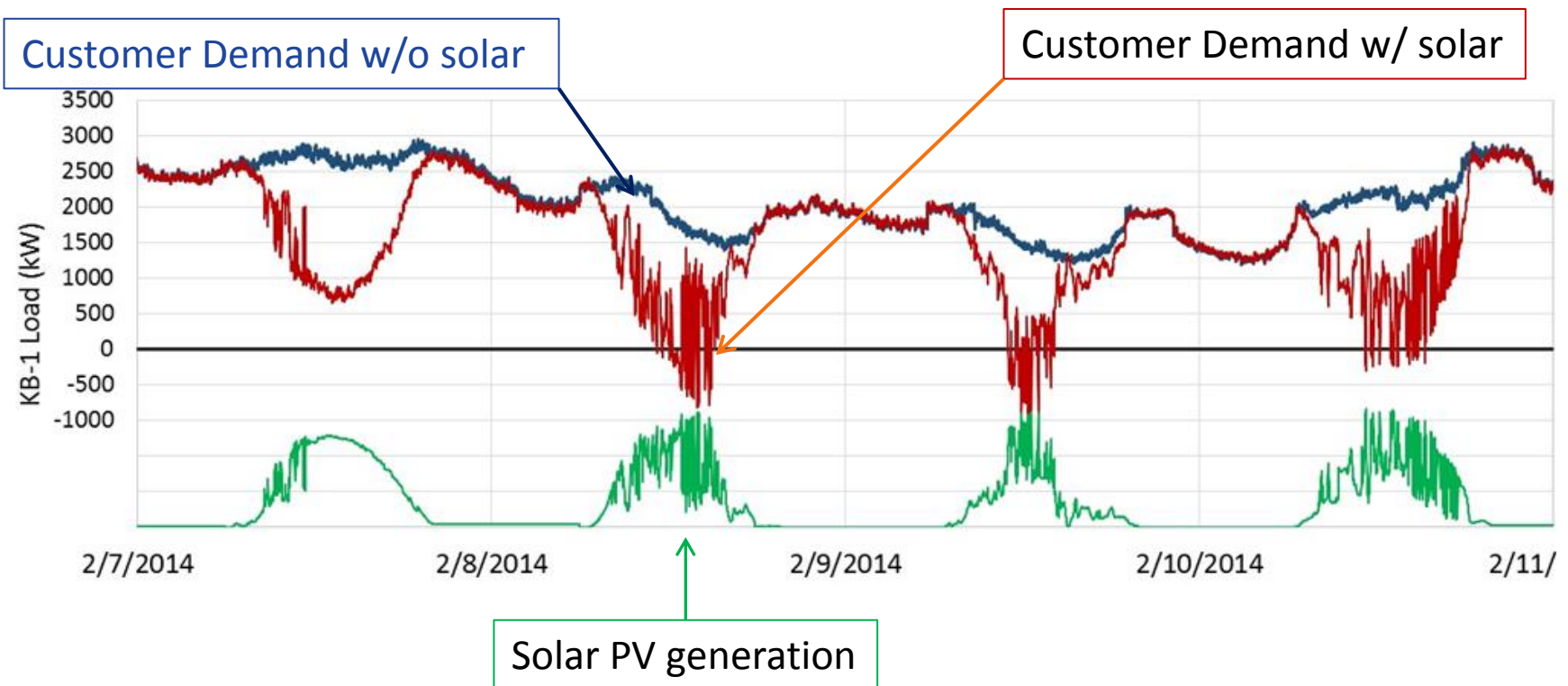
Map by: Tim Harvey

Solar PV Variability Challenges



■ Intermittency

- Example below models the impact of a 2.3MW solar PV array on a 12 kV distribution feeder.

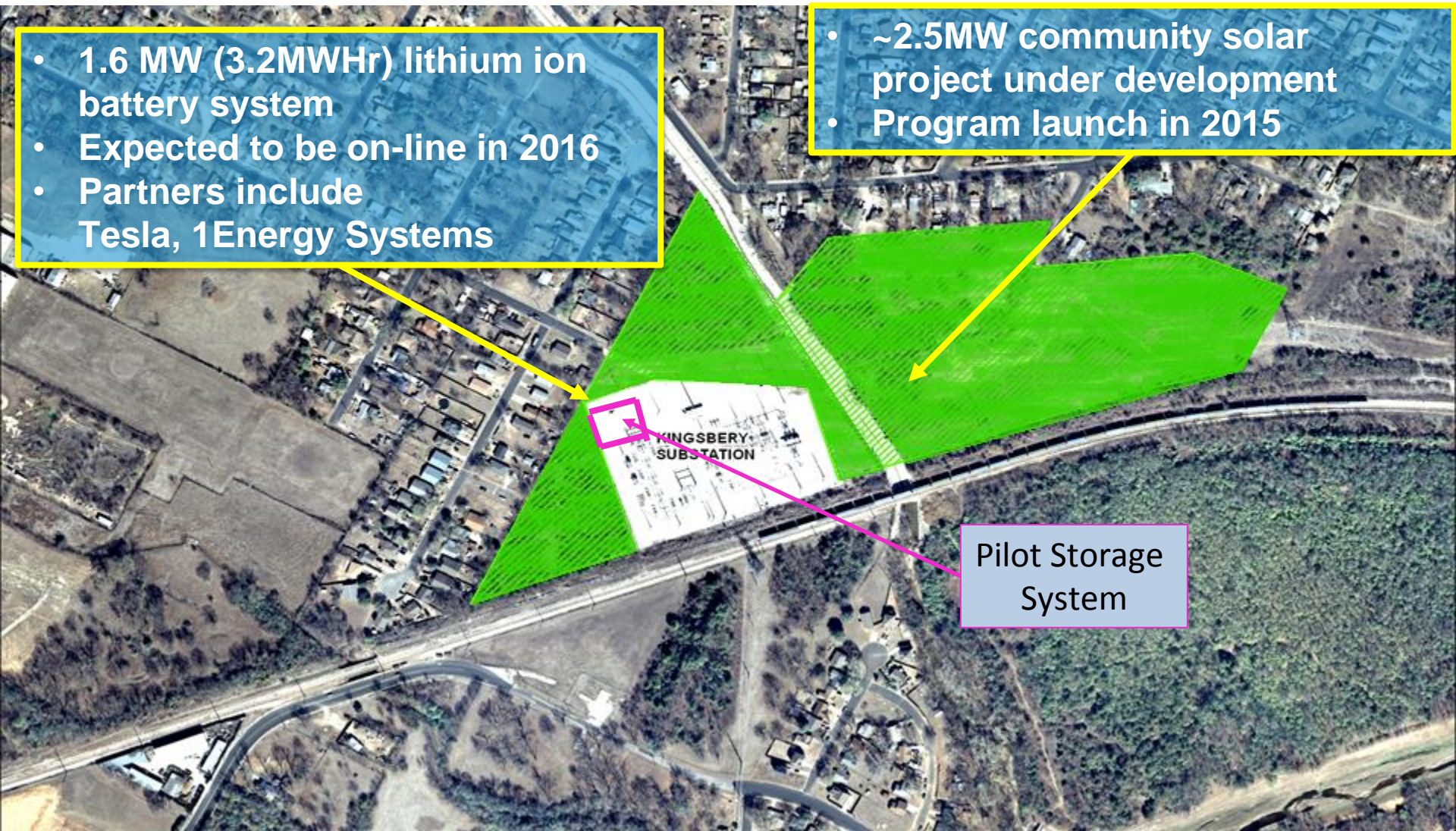


Kingsbery Site Overview



- 1.6 MW (3.2MWhr) lithium ion battery system
- Expected to be on-line in 2016
- Partners include Tesla, 1Energy Systems

- ~2.5MW community solar project under development
- Program launch in 2015



Pilot Storage System



Questions