



Sidewalk Master Plan & ADA Transition Plan Update

Sidewalk Asset Management Plan



Overview



- **Update Priorities**
- **Sidewalk Maintenance**
- **New Sidewalks**
- **Shared Streets**
- **Access Austin**
- **Feedback & Next Steps**

Update Priorities



Build on Success

- Update & simplify GIS Absent Sidewalk Prioritization
- Incorporate latest ADA legal rulings and guidance

Incorporate Best Practices

- Peer Cities report
- Imagine Austin & Complete Streets Resolution

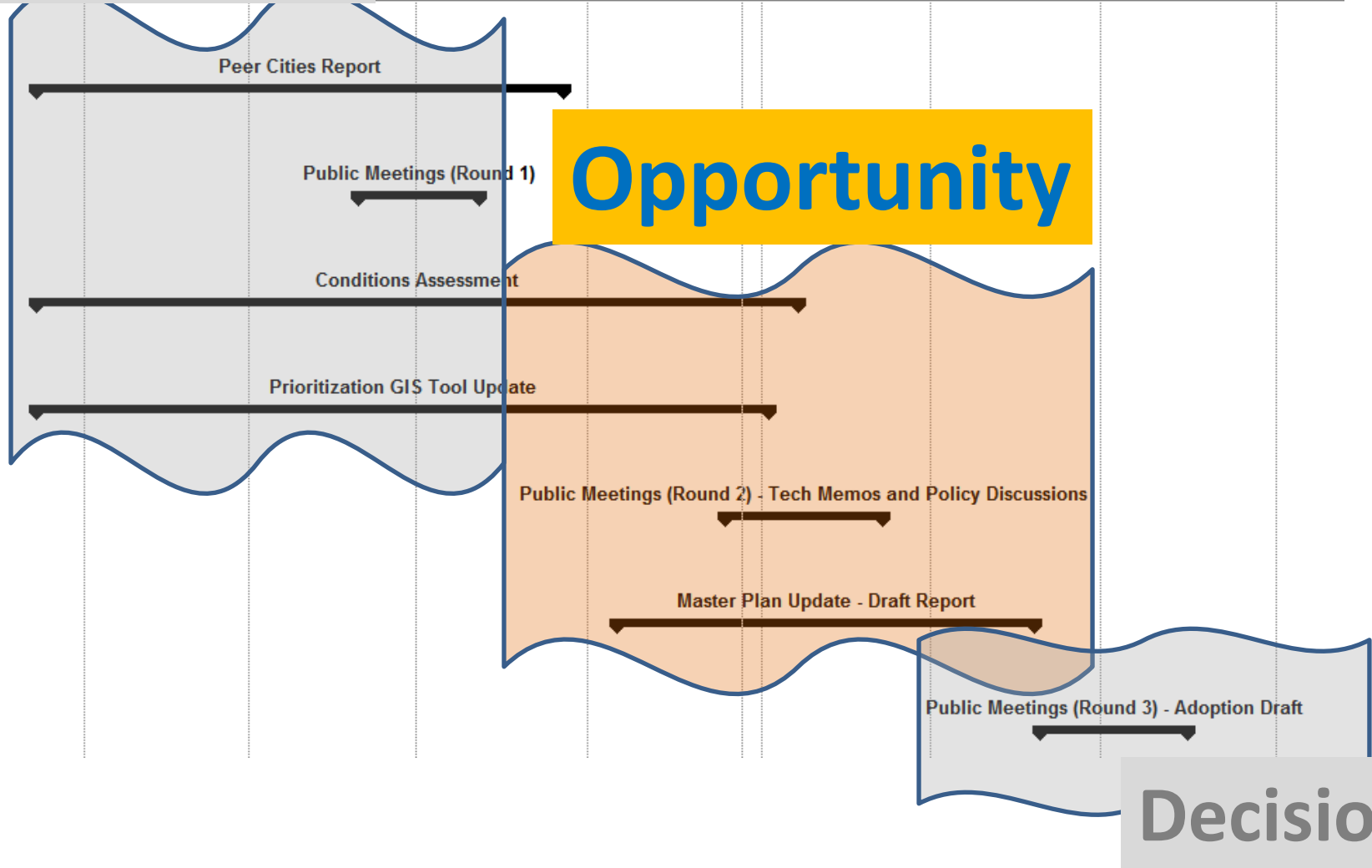
Improvements based on lessons learned

- Develop condition assessment rating and prioritization system
- Funding alternatives and goals

Update Schedule

Development

| May 21 | | | July 11 | | | September 1 | | October 21 | | December 11 | | Februar | |
|--------|------|------|---------|------|------|-------------|------|------------|------|-------------|-------|---------|------|
| 5/3 | 5/24 | 6/14 | 7/5 | 7/26 | 8/16 | 9/6 | 9/27 | 10/18 | 11/8 | 11/29 | 12/20 | 1/10 | 1/31 |

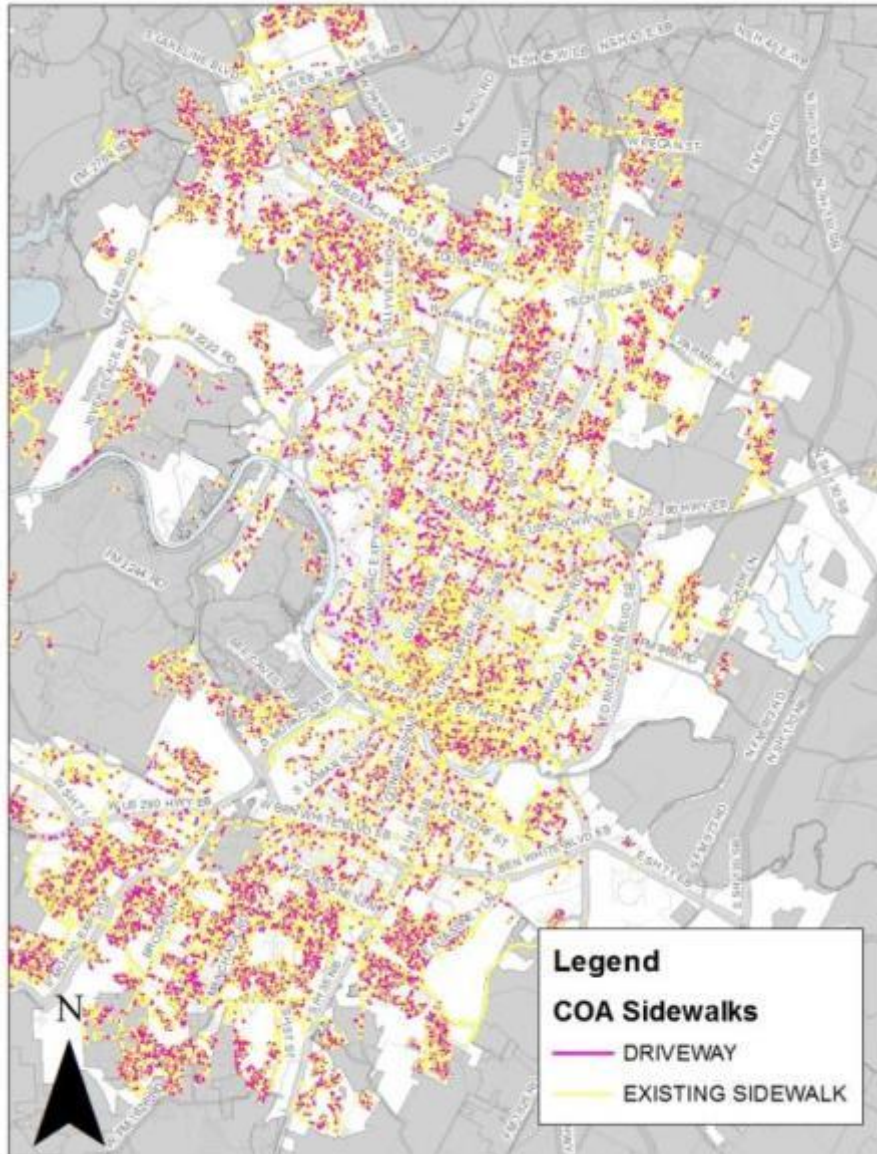




Sidewalk Maintenance

“there is a separate and just as pressing need for the maintenance of existing facilities” PAC 08/06/15 Briefing Note

Sidewalks in Austin



Current Statistics

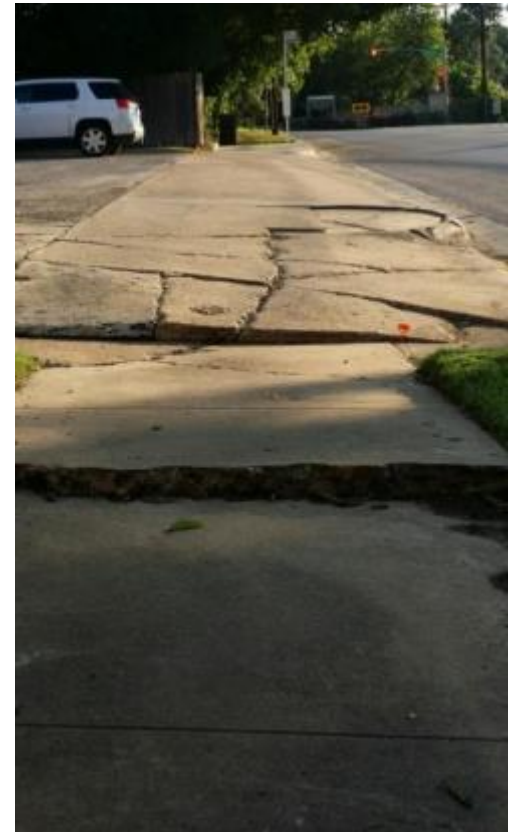
| | |
|------------------------------|---------|
| Existing Sidewalk (miles) | 2,360 |
| # Driveways | 97,000+ |
| Driveway/Sidewalk (miles) | 360+ |
| Absent Sidewalk (miles) | 2,270 |

Asset Management



| | | |
|---------------------------|---------------|--|
| Existing Sidewalks | 2,360 miles | |
| | 62 million sf | |
| | | |
| Replacement Cost | \$18/sf | |
| | | |
| Service Life | 75 years | |
| | | |
| Annual Maintenance Needs* | 32 miles | |
| | \$15 million | |

* Simplified replacement cost analysis that does not account for deferred maintenance



Austin - Proactive About Sidewalks

From *The Atlantic*

CITYLAB

NAVIGATOR

CITYFIXER

MAPS

PHOTOS

COMMUTE

WORK

HOUSING

WEATHER

Why L.A.'s \$1.4 Billion Sidewalk Repair Case Is Such a Big Deal

Los Angeles isn't the only jurisdiction that's been forced to confront its sidewalk problems by disability-rights advocates, and it won't be the last.

SARAH GOODYEAR |  @buttermilk1 | Apr 7, 2015 |  33 Comments

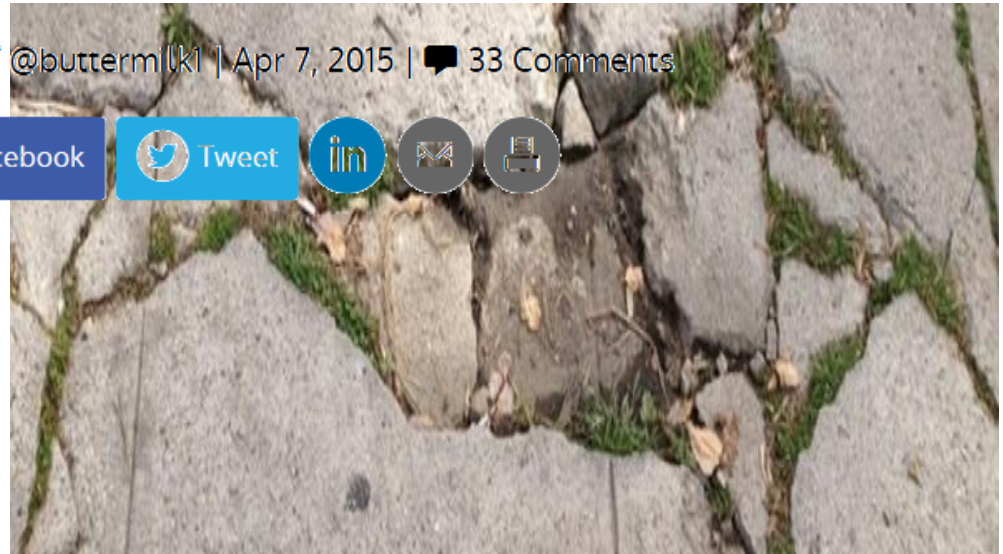
939
Shares



Share on Facebook



Tweet



Condition Rating System



A **EXCELLENT** condition / Fully ADA compliant

B **GOOD** condition / Minor level of ADA Noncompliance
- Functional for almost all users

C **MARGINAL** condition / Intermediate level of ADA noncompliance
- May not be functional for some users

D **POOR** condition / Severe level of ADA noncompliance
- Not functional for many / May present hazards for all users

F **FAILED** condition / Extreme level of ADA noncompliance
- Essentially nonexistent as a developed pedestrian route

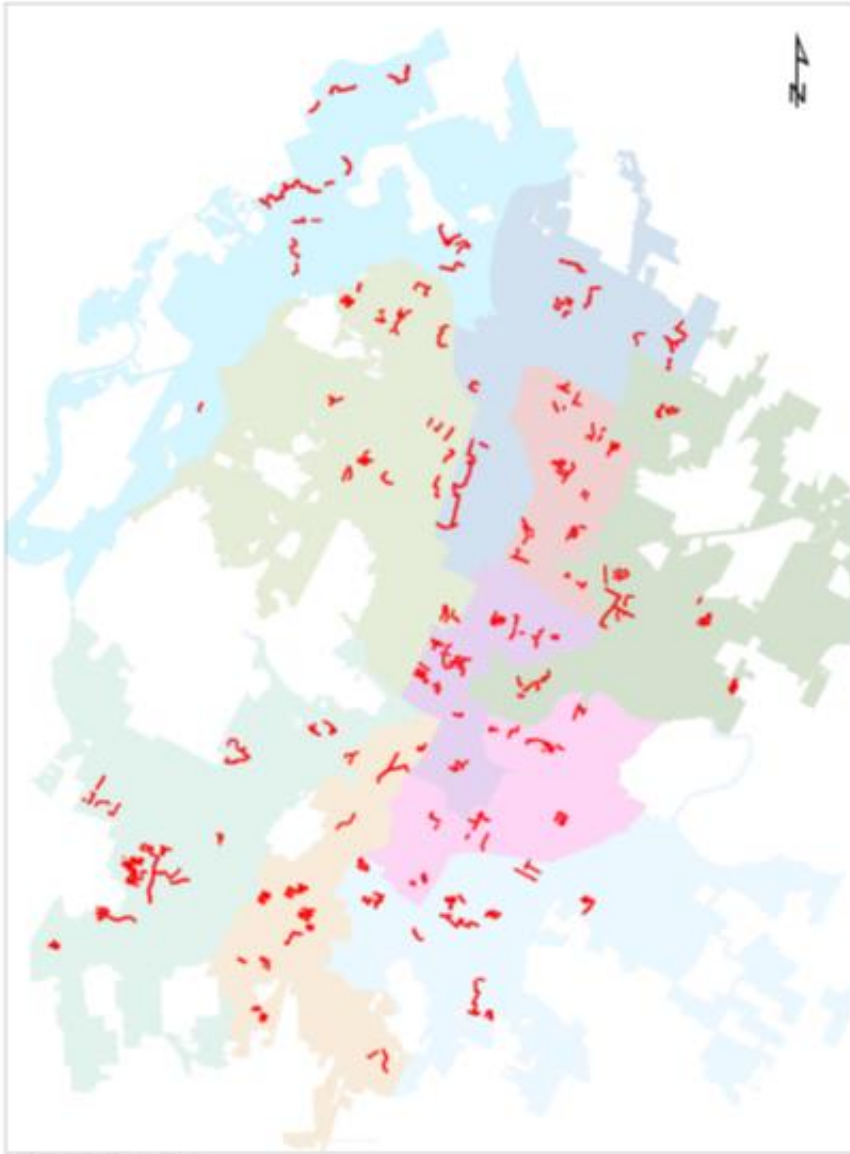
Condition Rating System

FUNCTIONALLY ACCEPTABLE

FUNCTIONALLY DEFICIENT

| Sidewalk Condition | FUNCTIONALLY ACCEPTABLE | | FUNCTIONALLY DEFICIENT | | |
|--------------------------------------|-------------------------|-----------------|------------------------|-----------|-------------|
| | A | B | C | D | F |
| Width | > 48 in. | 36 in. - 48 in. | | | < 36 in. |
| Cross-Slope | 0 - 2% | 3 - 5% | 6 - 8% | 9 - 12% | > 12% |
| Faults | < 0.25 in. | 0.25 - 0.5 in. | 0.5 - 2 in. | 2 - 4 in. | > 4 in. |
| Faults (Count) | None | 1 - 20 / 100 ft | > 20 / 100 ft | | |
| Cracks | None/Minor | Moderate | Severe | | |
| Vertical Clearance | > 80 in. | | | < 80 in. | |
| Obstruction | None | | | | Obstruction |
| Vegetation (Vertical Obstruction) | > 80 in. | | | < 80 in. | |
| Vegetation (Ground Obstruction) | None | | Obstruction | | |

Pilot Data Collection



150 mile Sample

- Proportional Distribution by:
 - Council District
 - Street Type

70 miles complete to date

Pilot Data Collection



Forefront of
Sidewalk
Evaluation?

Pilot Results

87% Noncompliant

70% Functionally Deficient



Pilot Results



Remove Vegetation



100%
increase in
functional sidewalk



Pilot Results

80% Noncompliant

43% Functionally Deficient



Vegetation Removal



Promote
Landowner
Maintenance

1. Public Awareness Campaign
2. Notification
3. Enforcement?

Estimated Repair Budget



ADA Compliance (A) \$580M

Functionally Acceptable (A/B) \$330M



Maintenance – Peer Cities

http://austintexas.gov/sites/default/files/files/Public_Works/Street_%26_Bridge/Sidewalk_Peer_Cities_Report_and_Appendix.pdf



| annual budget | miles existing |
|---------------|----------------|
| \$250,000 | 2,359 |
| \$900,000 | 2,094 |
| \$5,000,000 | 4,400 |
| \$2,500,000 | 1,845 |
| \$8,500,000 | 1,087 |
| \$500,000 | 4,761 |
| \$2,000,000 | 2,000 |

Maintenance Goals?

| Annual Budget % functional in 10 yrs | |
|---|-----|
| Network | |
| \$15M | 85% |
| \$10M | 80% |
| \$5M | 75% |
| High Priority Areas | |
| \$15M | 98% |
| \$10M | 90% |
| \$5M | 80% |



Maintenance Funding Options

| Existing Funding Source | Current | Future |
|-------------------------------|------------------------------|--------|
| Bonds (rehabilitation) | \$1.1M/year (2010 – 2014) | ? |
| Transportation User Fee (TUF) | \$ 250 K in 2015 | ? |

Potential New Funding Sources ?

- Commercial/multi-family driveway assessment
- Residential driveway assessment
- Enforcement Fees
- Parking Meter Revenue
- Sales Tax
- Other Ideas





New Sidewalks

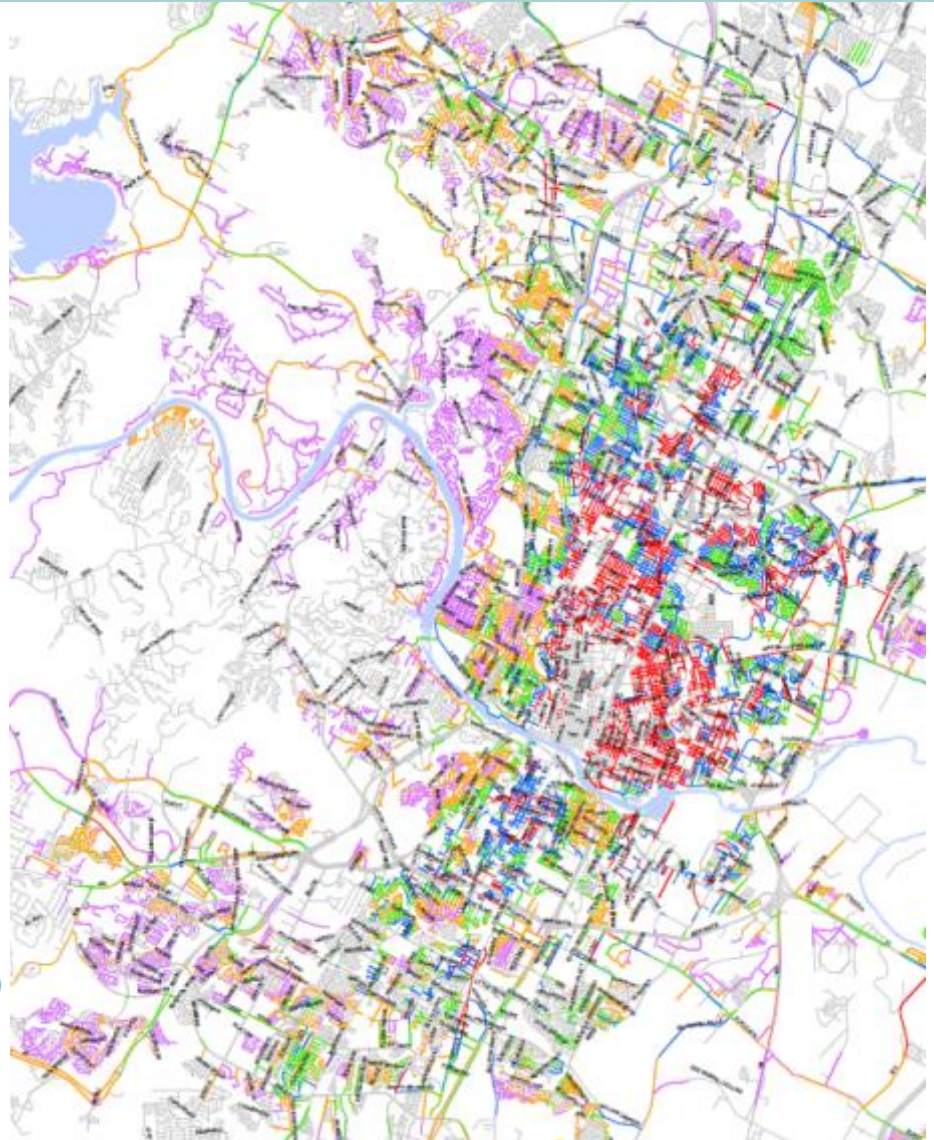
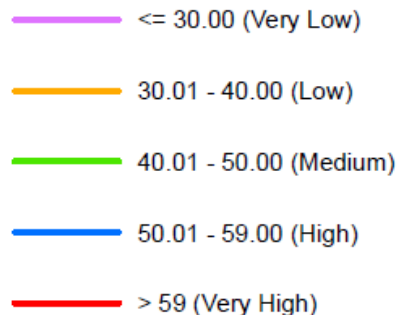
Absent Sidewalk Priorities (draft)

Key Findings

- 246 miles of “very high” priority (148% increase since 2009)



SIDEWALK SCORE

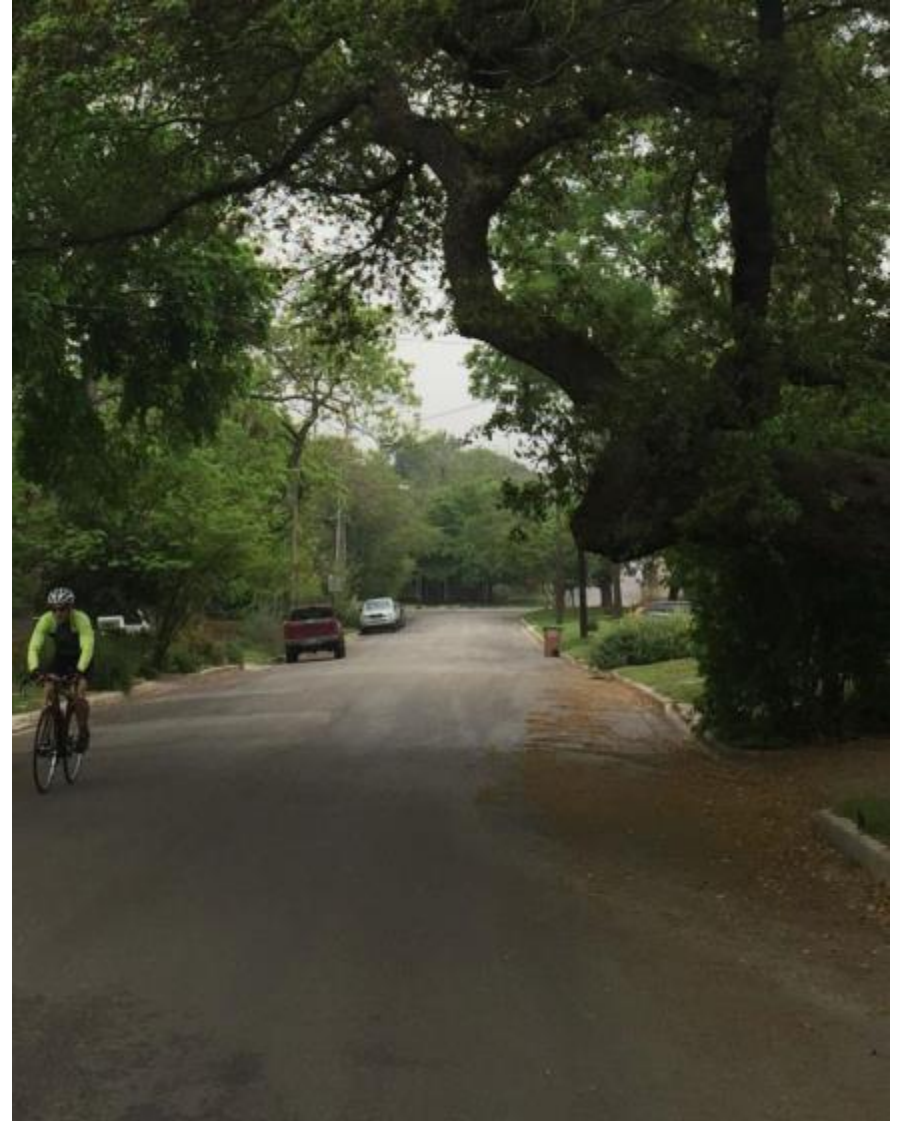


Shared Space Pilot Project

Shared spaces are environments where people walking, bicycling, and driving share the same space.

Pilot project will identify Austin neighborhoods with the following characteristics:

- Primarily Residential
- Low speed and volume of cars
- No sidewalks
- On-street parking



Shared Space Principles



1

Establish Gateways

2

Design for Slow Speeds

3

Consider the Context

4

Involve Stakeholders

5

Work with Existing Guidance

6

Evaluate Effectiveness

New Sidewalk Funding Options

| Existing Funding Source | Current | Future |
|---|-----------------|--------|
| Bonds | \$9M/year | ? |
| Sidewalk Fee in Lieu | \$500 K in 2015 | ? |
| Grants | limited | ? |
| Neighborhood Partnering (NPP) | limited | ? |
| Parking Benefit District (PBD) | limited | ? |
| Capital Improvements Program | varies | ? |
| Limited – average less than \$500k annually | | |

New Sidewalk Funding Options

Potential New Funding Sources ?

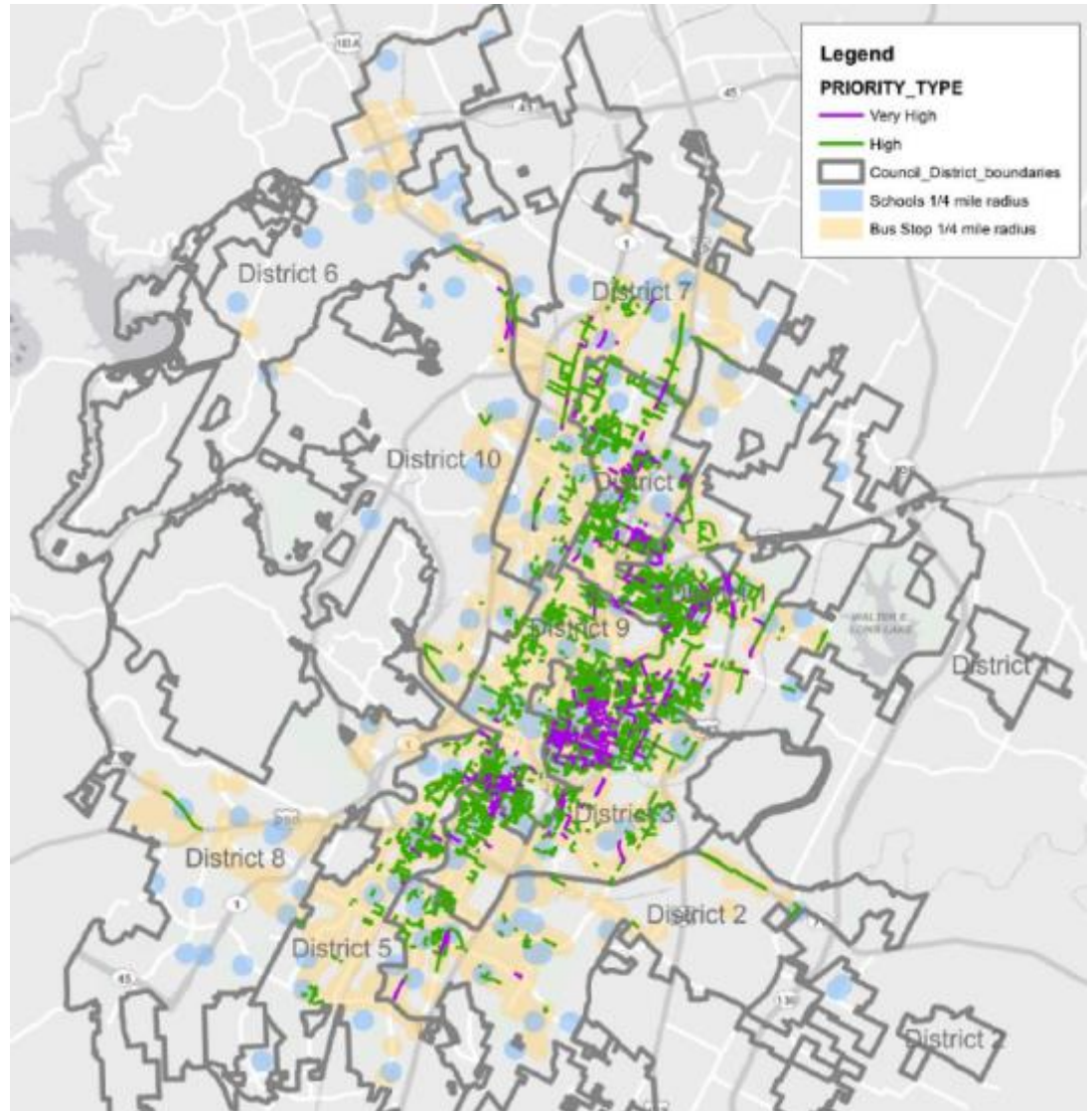
- New Development Sidewalk Fee
- Incentive/cost matching program
- Local Improvement District (LID, PID, TIF etc)
- Commercial/multi-family driveway assessment
- Residential driveway assessment
- Enforcement Fees
- Parking Meter Revenue
- Other Ideas





Program Goal

Enhance pedestrian connectivity by completing priority sidewalks within $\frac{1}{4}$ mile of all identified schools, bus stops, and parks.





Next Steps/Concurrent Actions

- Complete update to Sidewalk Master Plan.
- Continue work with AISD on Safe Routes to School Program.
- Continue to seek alternative sources of funds.
- Refine cost estimates and work scope in preparation for capital funding programs and other potential sources.



Access Austin Goals?

Annual miles of new sidewalk

| | |
|-------|----------|
| \$30M | 48 miles |
| \$20M | 32 miles |
| \$10M | 16 miles |



Feedback Requested

- Condition Assessment
- **Sidewalk Maintenance Goals & Funding Options**
- **New Sidewalk Goals & Funding Options**

