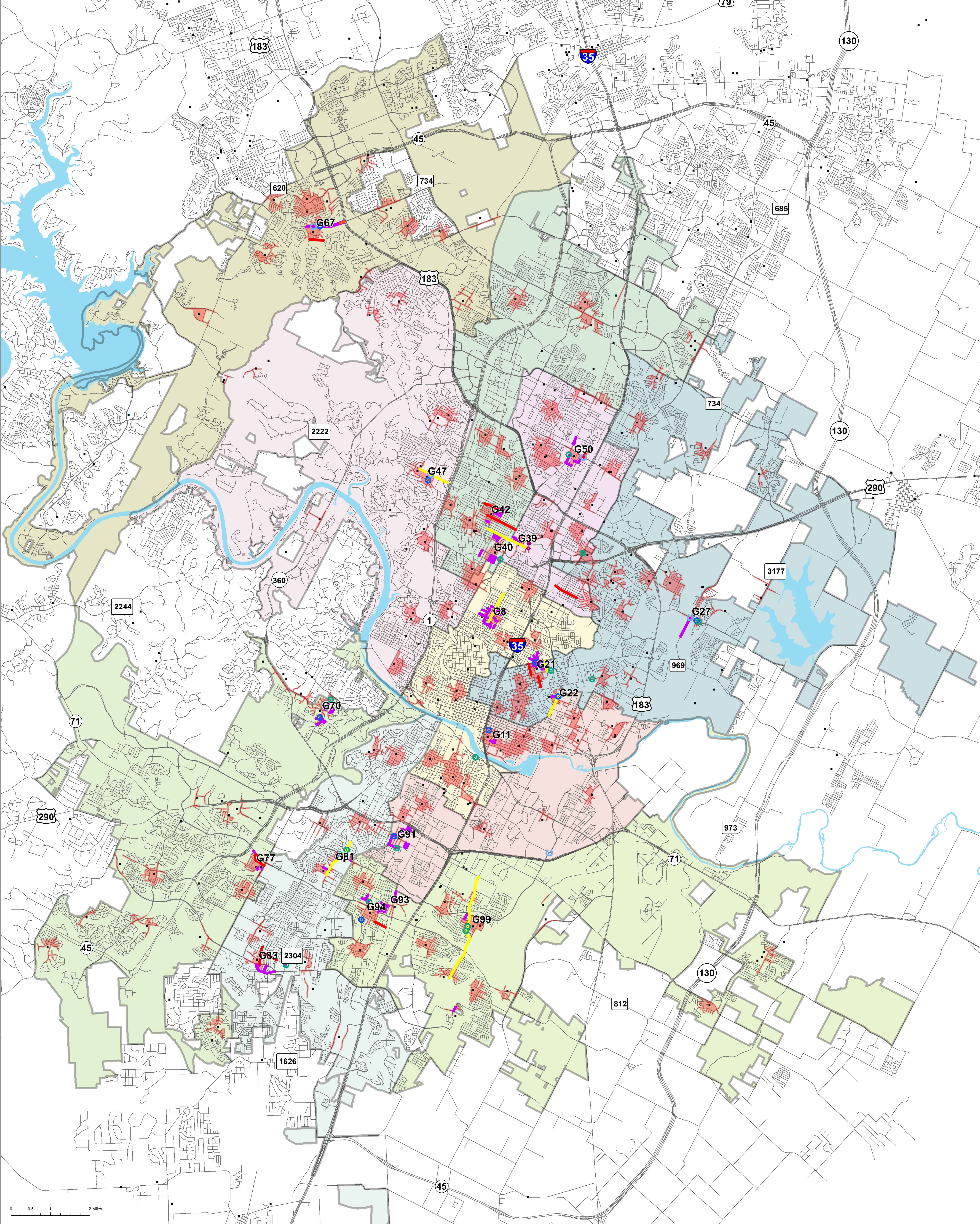


Staff Recommendation



Comprehensive Mobility Projects
Capital Metro ¼ Cent Fund
Project Groupings and Council Member Top Priorities

- | | |
|------------------------------|-----------------------|
| Accessible Pedestrian Signal | Bicycle Facilities |
| Pedestrian Hybrid Beacon | Arterial Improvements |
| Signal | Sidewalks |
| Intersection Improvements | Traffic Calming |

- Schools Public and Private
- Schools 1/4 Mile Service Area

Adaptive Signal Control and MetroRapid Station not mapped

This product is for informational purposes and may not have been prepared for or be suitable for legal, engineering, or surveying purposes. It does not represent an on-the-ground survey and represents only the approximate relative location of property boundaries.

This product has been produced by Austin Transportation Department for the sole purpose of geographic reference. No warranty is made by the City of Austin regarding specific accuracy or completeness.

Date: 10/22/2015