



October 30, 2015
Austin TX Flood Event



NOAA

NATIONAL OCEANIC AND
ATMOSPHERIC ADMINISTRATION
UNITED STATES DEPARTMENT OF COMMERCE

October 29th 2015:

National Weather Service Forecast for Friday:

Most locations will average 1-3 inches. Isolated pockets of up to 5 inches possible.

Rainfall Actually Received:

ABIA **13.00 inches**

Camp Mabry **4.92**

OVERVIEW



U.S. 183 from overpass on 71
10:16 AM - 30 Oct 2015

Greatest impacts were to the wastewater and reclaimed systems

- Lift Stations:
 - Pearce Lane 2—flooded. Flows being handled by Pearce Lane 1 through interconnect
 - Gonzales Lift Station—Partially Submerged. One pump operational
 - Springfield Lift Station—flooded. Bypass pumping set up

IMPACTS TO AUSTIN WATER

Thoroughbred Farms WWTP

- Serves a specific neighborhood is southeast Travis County
- Flooded—damaged blowers, electrical, equipment.
- Neighborhood sustained damages
- Utilizing pump and haul until permanent solution is determined.

IMPACTS TO REMOTE FACILITIES



Watermarks show downpour reached above door height



Cow survives the flood



Neighborhood sustained much damage due to rainstorm

IMPACTS TO WALNUT CREEK WWTP

Wastewater Plants Walnut Creek WWTP

- Annual Average flow of 59 MGD,
- Peak flow on October 30th of 375MGD
- Total daily flow was 109 MGD
- Bypassed for 4.5 hours for a total of 2.1 million gallons

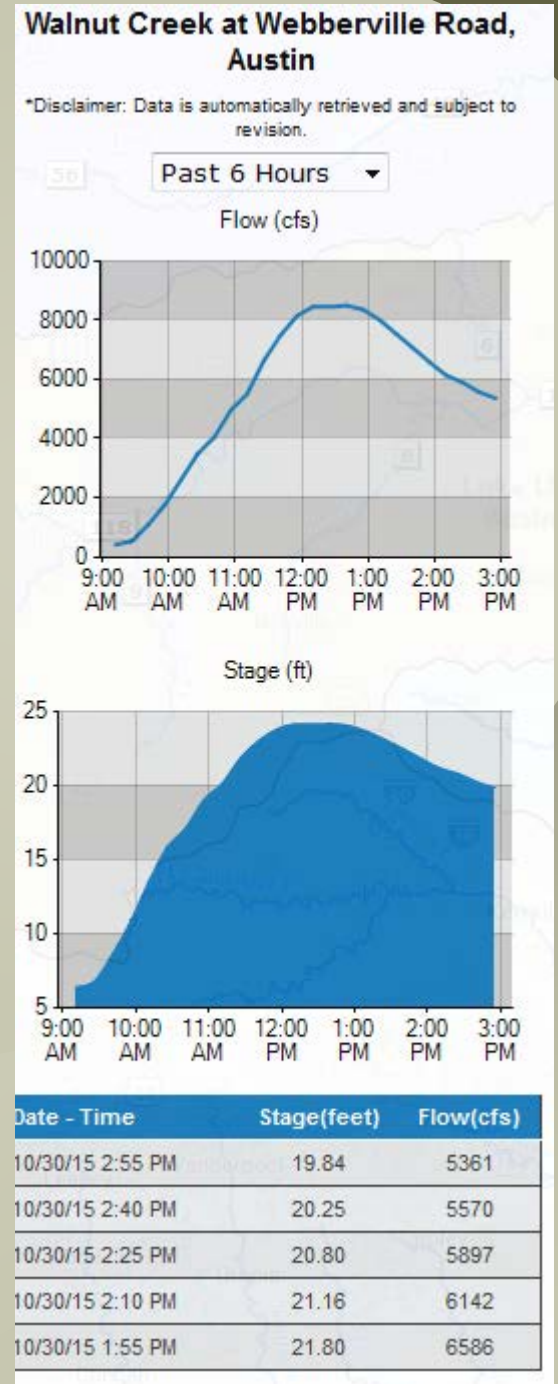


Water seeping into Walnut at Noon, Friday



Electrical Room floods

Friday's Flow Data
Chart 9AM-3PM





**Alongside Walnut Creek Plant,
Friday Afternoon**

IMPACTS TO SAR WWTP

- **SAR WWTP—HARDEST HIT**
 - Annual Average Flow of 46.4 MGD
 - Peak Flow on October 30th of 119 MGD
 - Bypassed for 14 hours for a total flow of 104.4 million gallons

SAR Impacts continued:

POWER LOST FROM 3:44pm – 4:50 am

- Tried to switch electric feeds to the plant away from Onion Creek Substation before flooded but the alternate feed failed.
- Flow backed up in the tunnels during the outage caused a Sanitary Sewer Overflow at Roy Guerrero Park.

IMPACTS TO AUSTIN WATER

SAR Impacts Continued:

- Fallwell Lane flooded—**TWICE**
 - Fallwell Lane flooded in the morning due to runoff from I 30 then flooded again in the afternoon when Onion Creek rose to 39 feet.
 - Damage to Fallwell Lane washed away a 12” reclaimed line serving the Jimmy Clay and Roy Kaiser Golf Courses.

IMPACTS TO AUSTIN WATER



Fallwell Lane under 130



**130 Access and
Fallwell Lane**



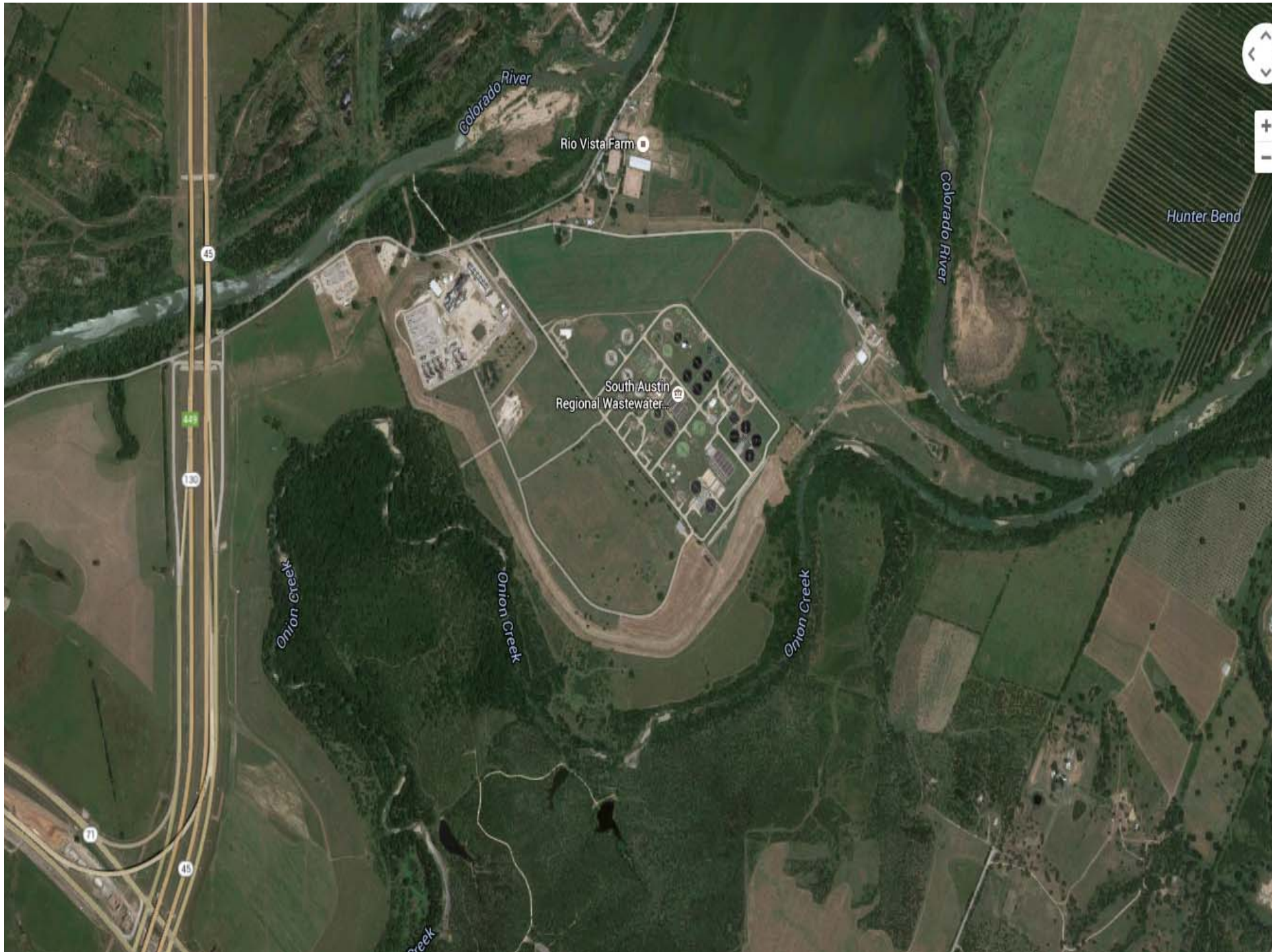
Fallwell Ln at 130



Fallwell Lane between
130 and SAR

RECOVERY

- Public Works built a temporary road from 130 frontage road to SAR WWTP. Able to receive chemical shipment on Monday.
- Plants are operating well, no internal plant equipment damage just need to send a couple of motors from SAR WWTP to be dipped and baked.
- Austin Energy is installing a jumper that can be more easily opened. This gives redundant circuits/feeds from two separate substations to SAR





**Walnut Creek, damaged
manhole**



**Temporary repair to
manhole**