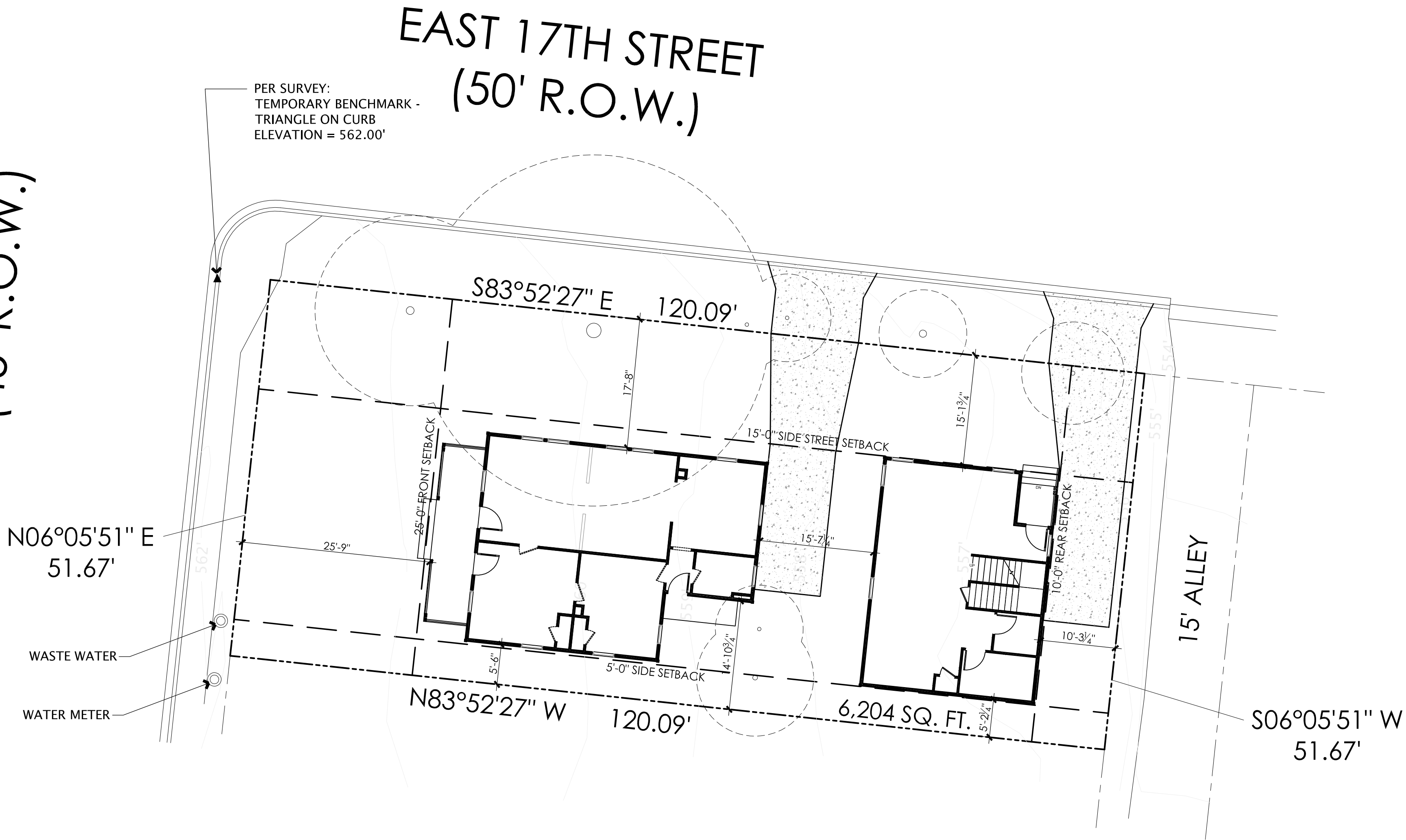
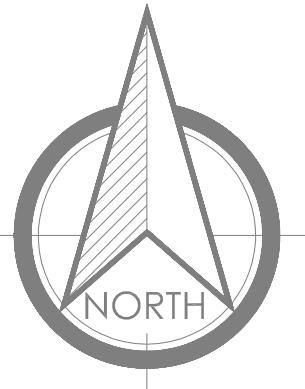


WALNUT AVENUE
(45' R.O.W.)



1611 WALNUT AVENUE
AUSTIN, TEXAS 78702

DATE NOVEMBER 11, 2015

DESIGNED BY KC

DRAWN BY KC

JOB NO. MX14022

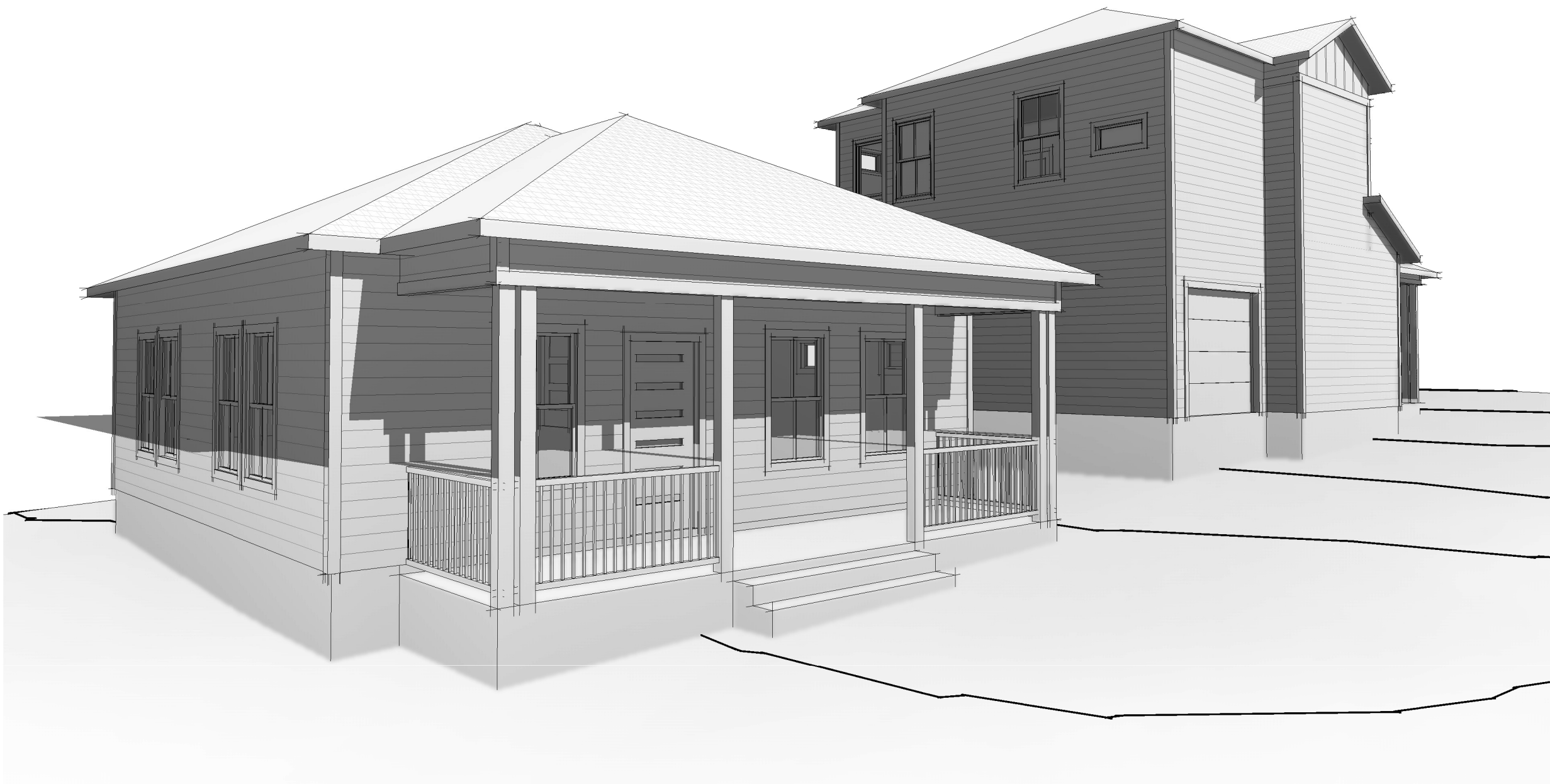
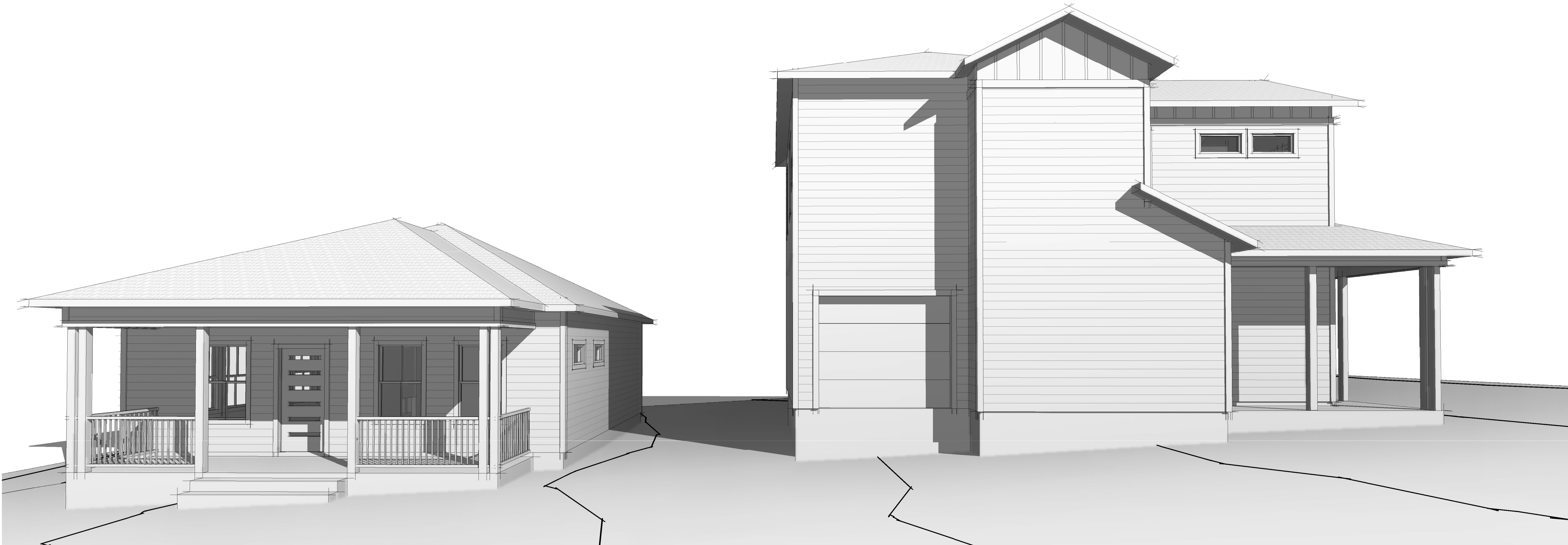
REVISIONS

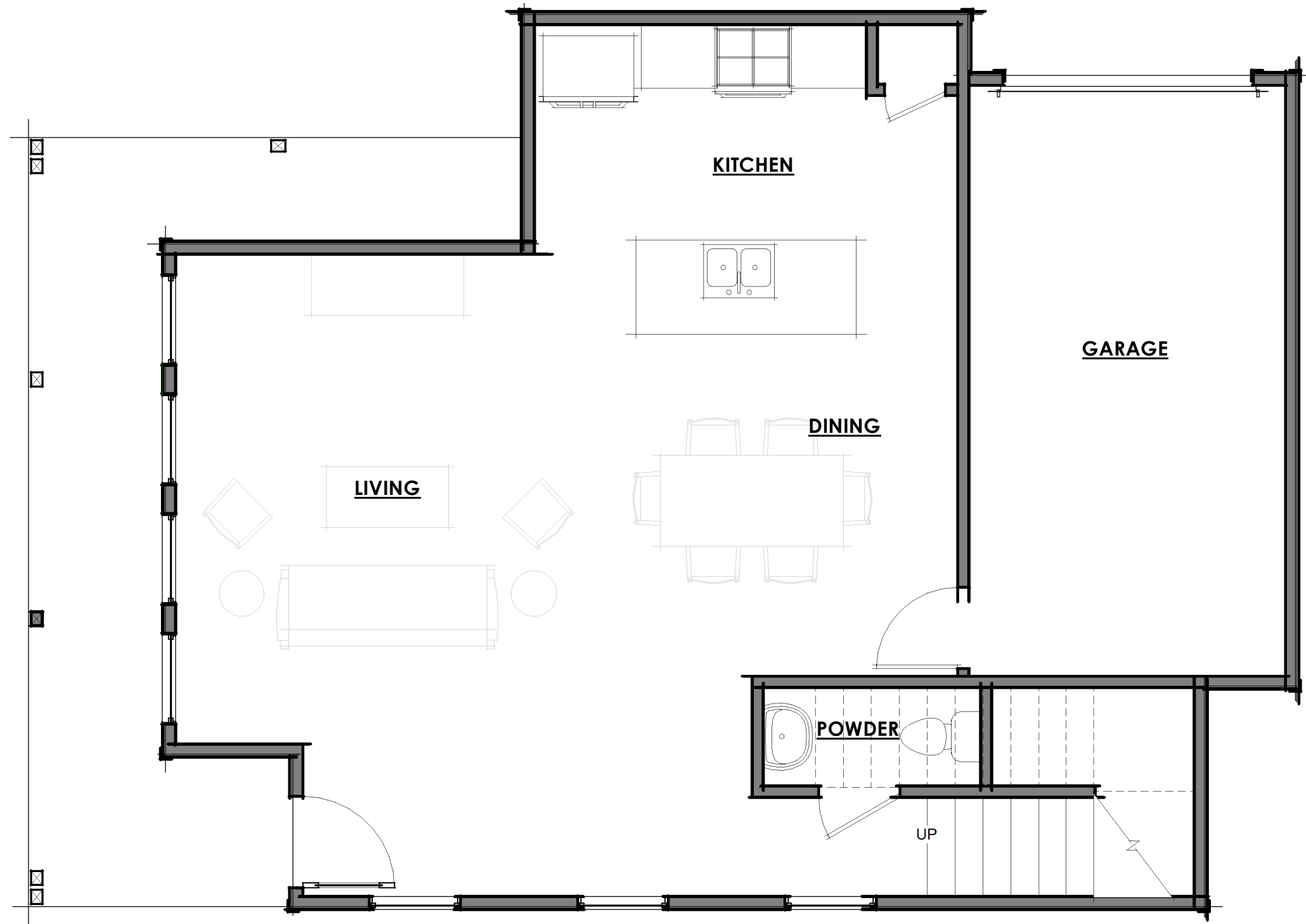
SHEET NO.

AS1.0

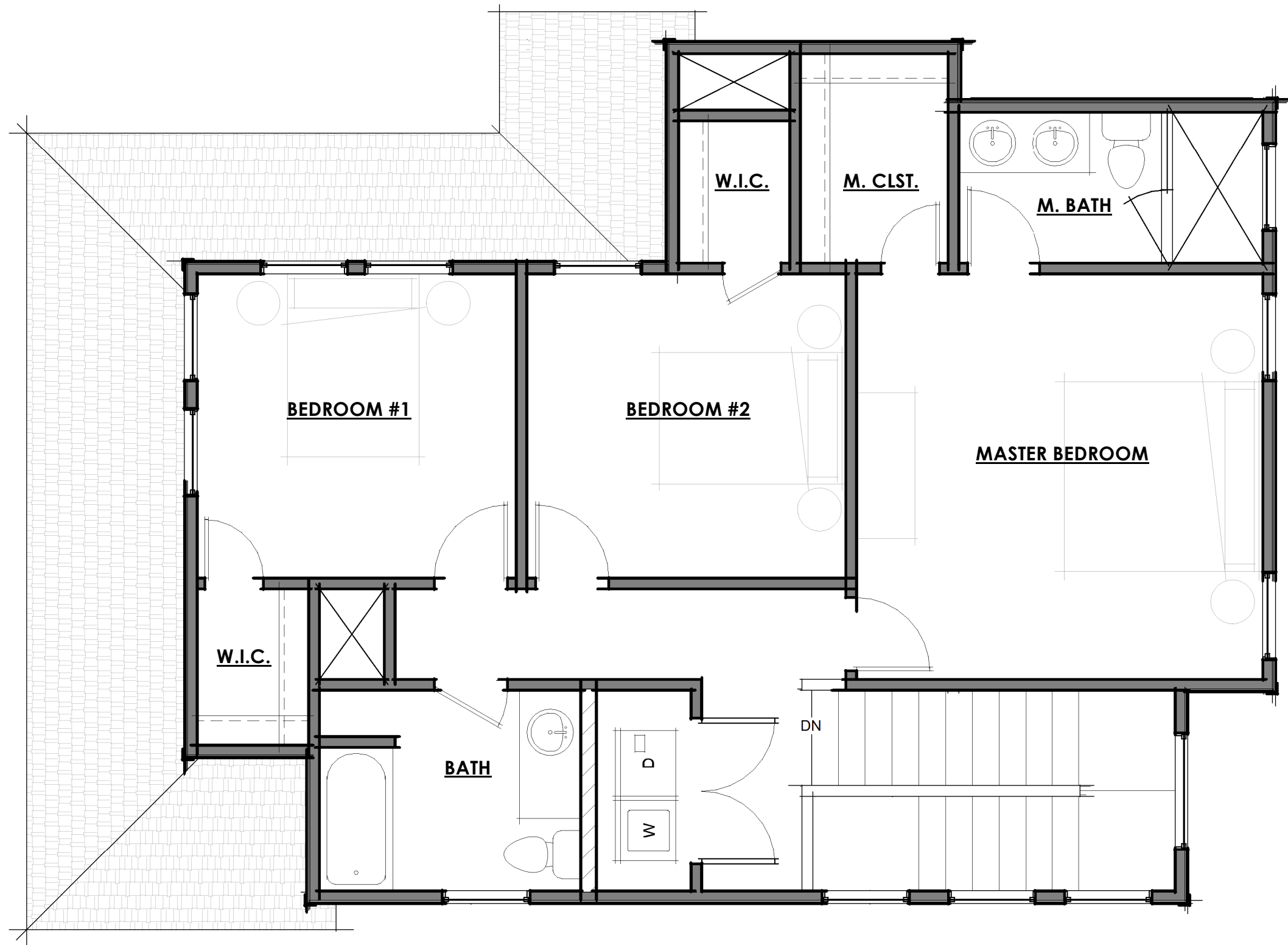
SCALE 3/32" = 1'-0"

ARCHITECTURAL SITE PLAN

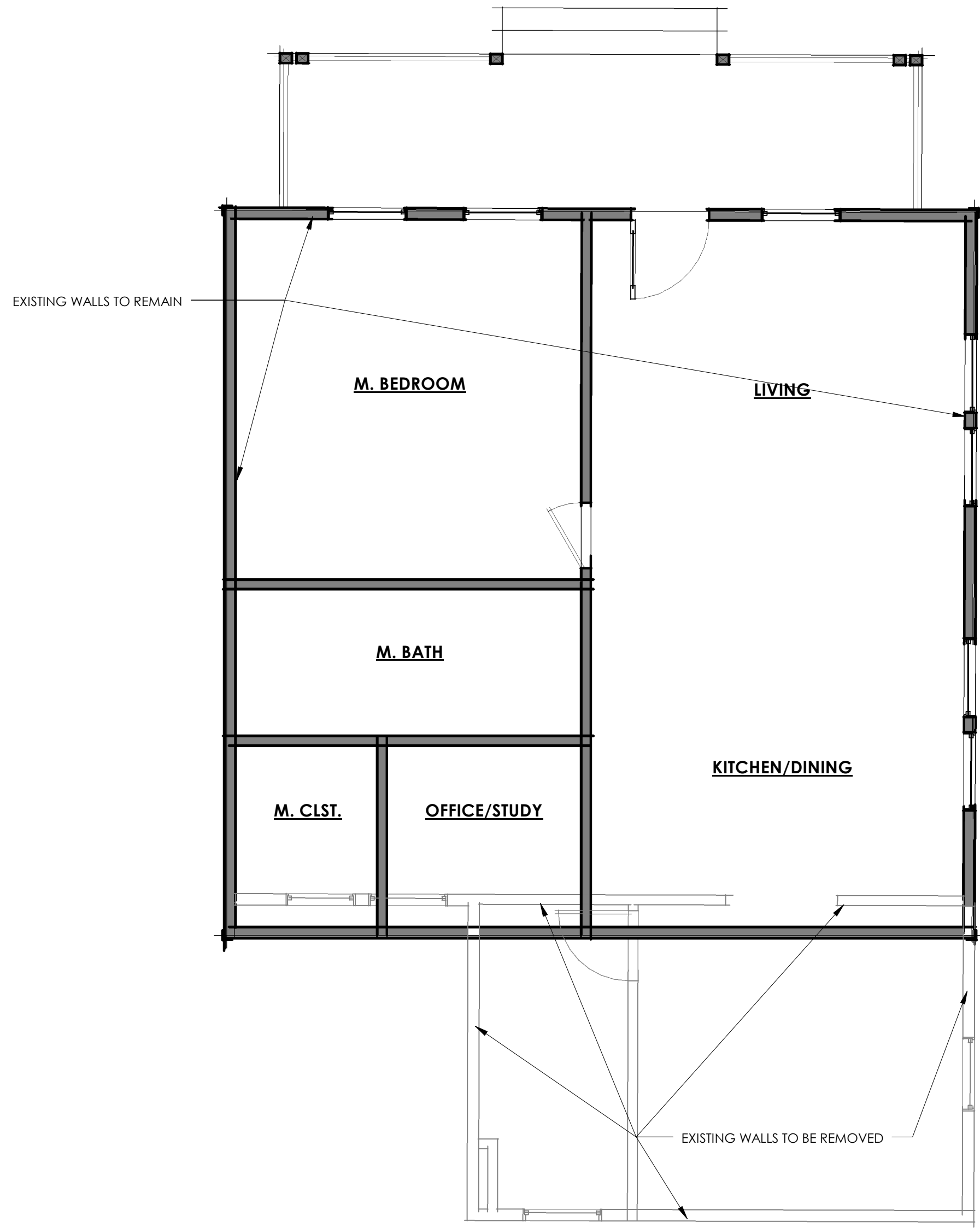




1 PRIMARY - 1ST FLOOR
1/4" = 1'-0"



2 PRIMARY - 2ND FLOOR
1/4" = 1'-0"



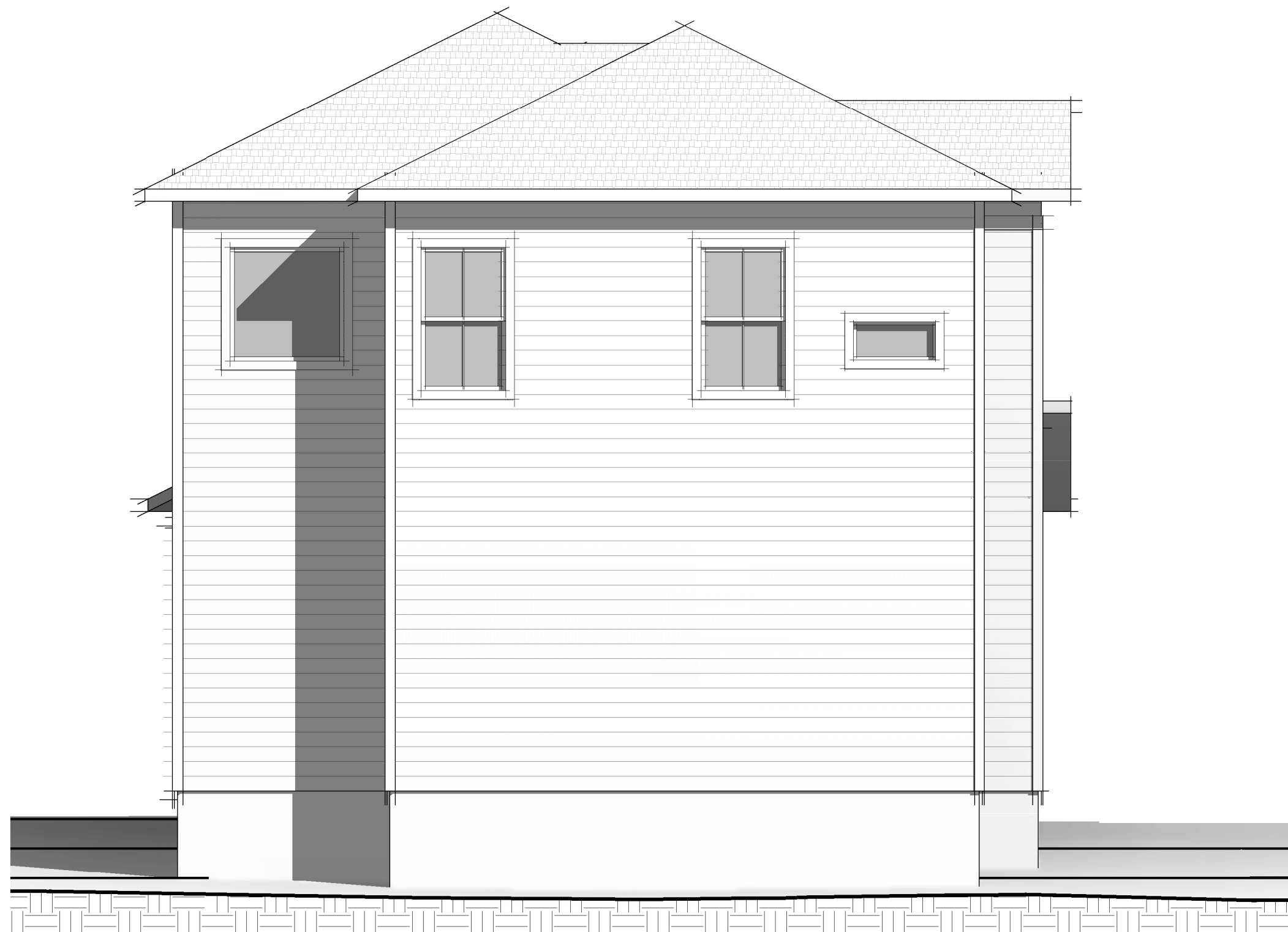
3 SECONDARY - 1ST FLOOR (REMODEL)
1/4" = 1'-0"

GROSS SQUARE FOOTAGES

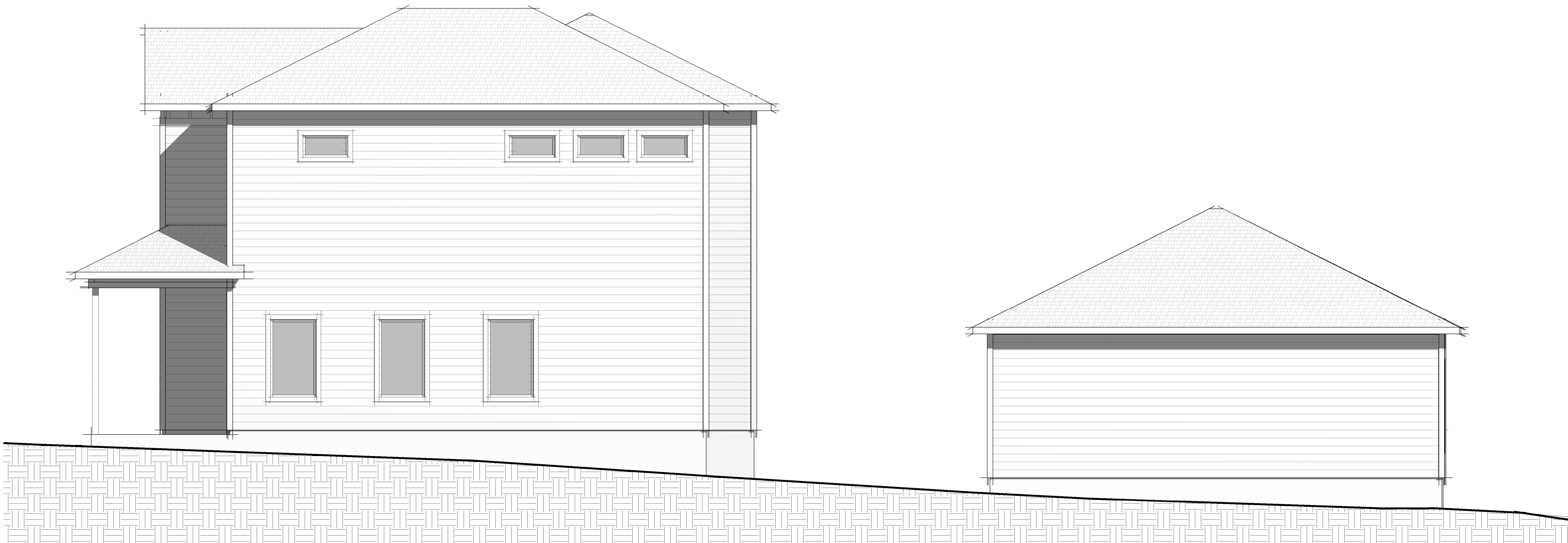
PRIMARY	1,670 SQ. FT.
SECONDARY (REMODELED UNIT)	796 SQ. FT.



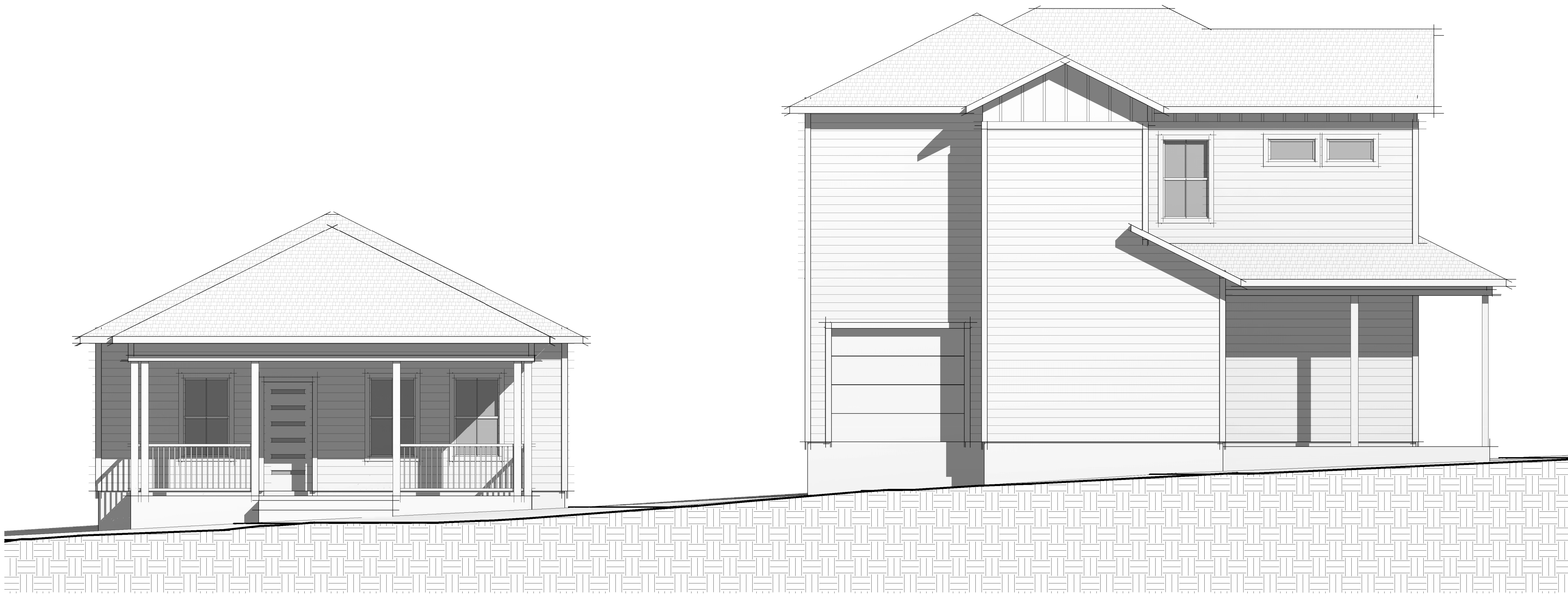
① PRIMARY WEST ELEVATION
1/4" = 1'-0"



② PRIMARY EAST ELEVATION
1/4" = 1'-0"



③ SOUTH ELEVATION
1/4" = 1'-0"



① NORTH ELEVATION
1/4" = 1'-0"



② SECONDARY EAST ELEVATION
1/4" = 1'-0"



③ SECONDARY WEST ELEVATION
1/4" = 1'-0"