

Capital Metro

- Park and Ride Program

*City of Austin City Council Mobility Subcommittee
December 2, 2015*

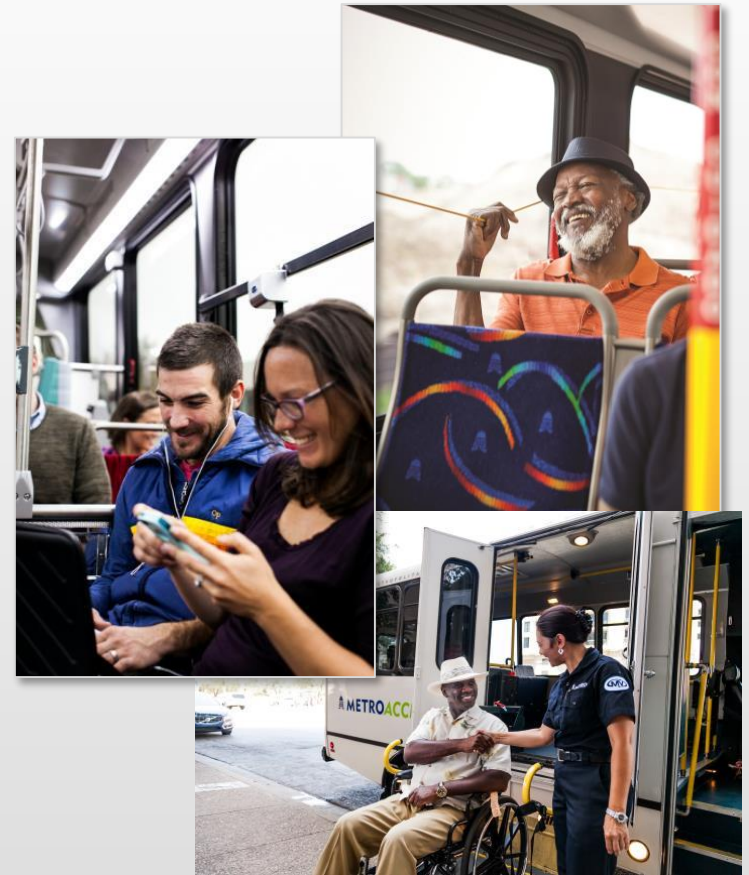
Park and Ride Overview

- Why Park and Rides?
- Current Status
- Future Projects and Programs
- Questions and Discussion



Why Park and Rides?

- Provide access to the transit system and destinations it serves
- Expands reach of transit to outlying areas
- Generally for commute trips to work and school via Express-type service
- Mostly focused on Mon.-Fri. peak period service
- Can be combined with transit center functions



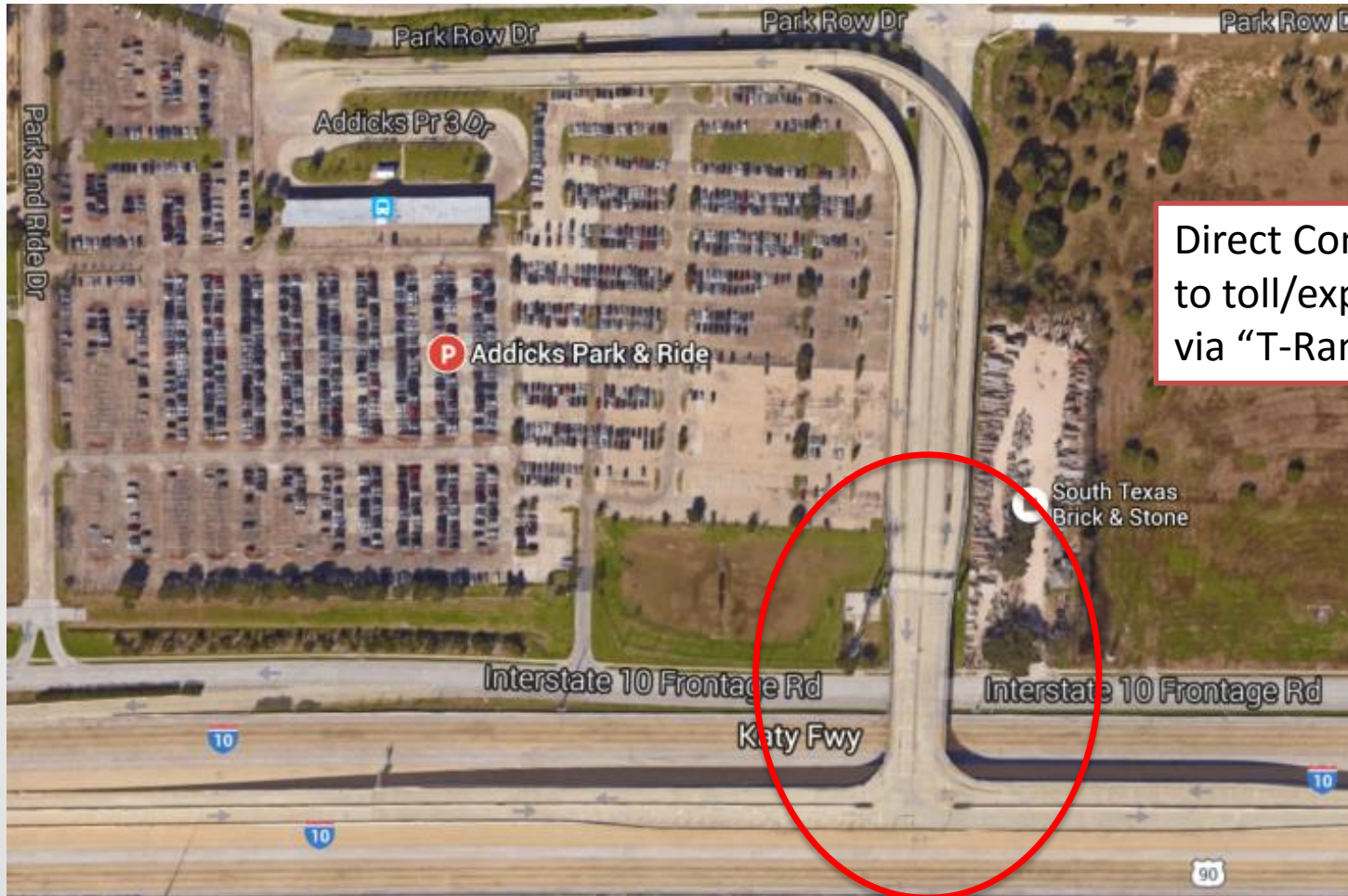
Park and Ride Considerations

- Park and Rides can be expensive to develop and maintain
- Trip patterns can be highly directional, reducing efficiency
 - Inbound trips in a.m.
 - Outbound trips in p.m.
- Absent transit priority, buses can be stuck in traffic- reducing reliability and travel speed



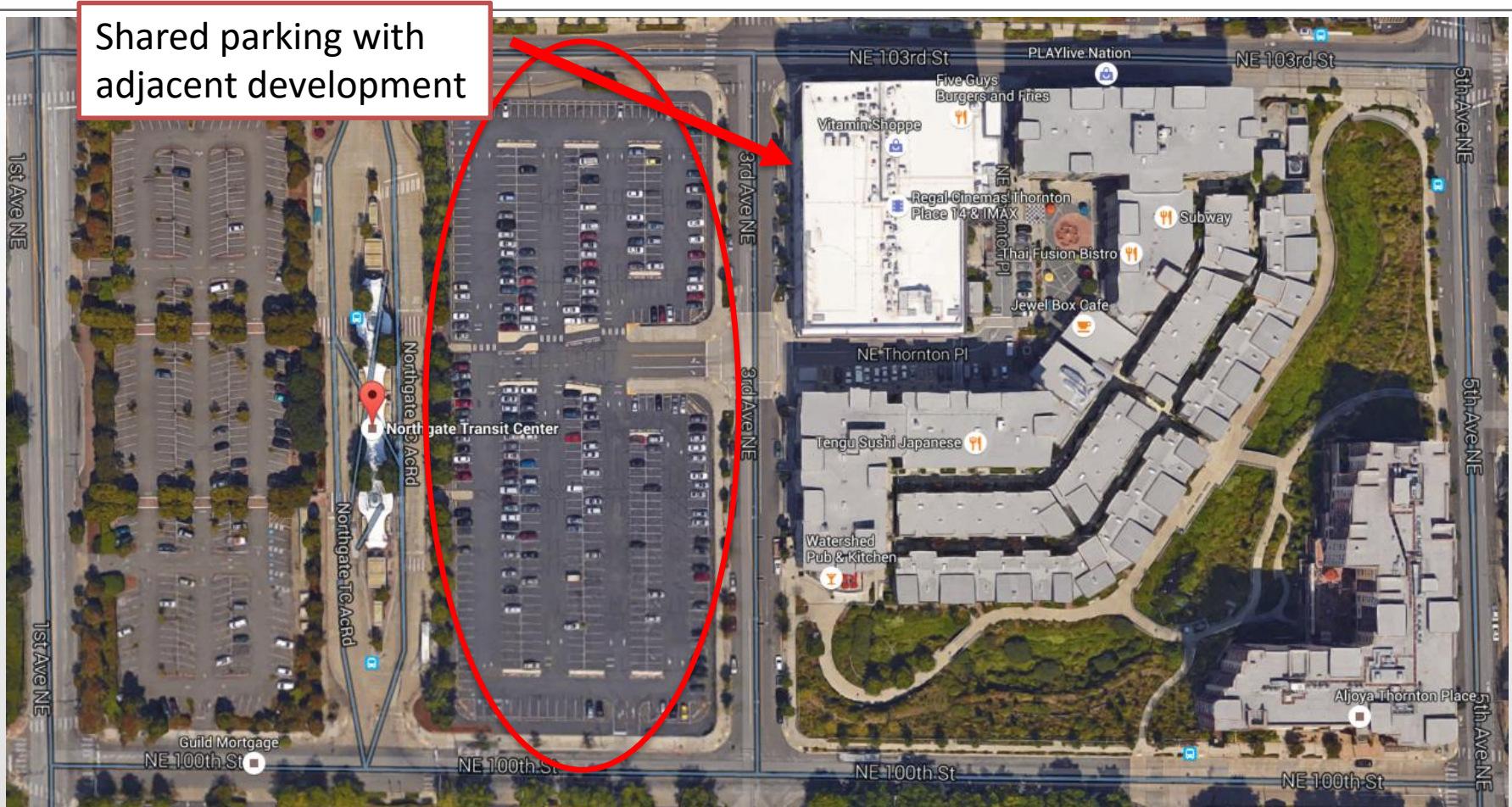
Lakeline Park and Ride

Park and Ride Best Practices



Direct Connection
to toll/express lanes
via “T-Ramp”

Park and Ride Best Practices



Park and Ride Best Practices

Transition from surface parking to mixed-use development with structured parking and revenue stream



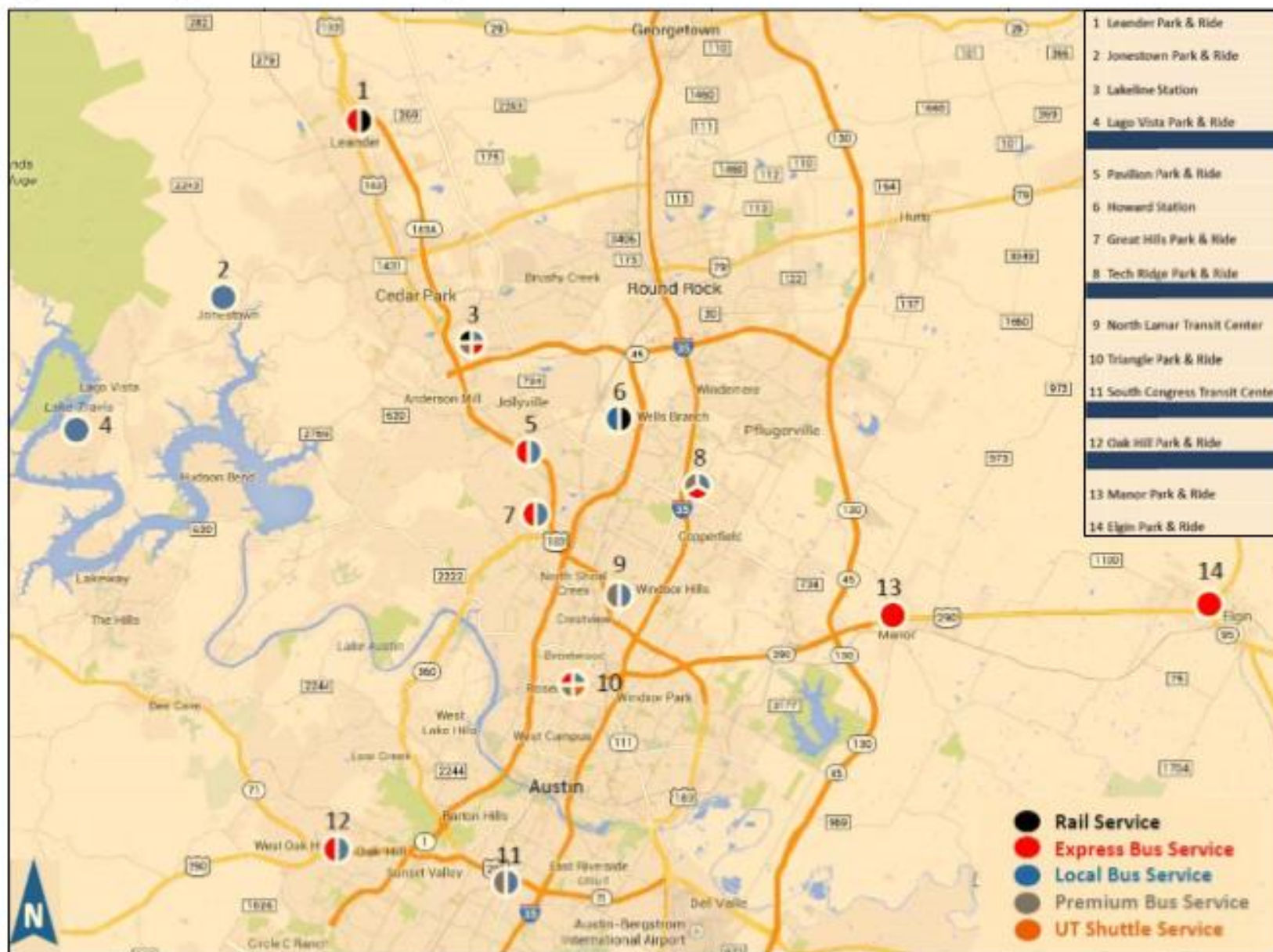
Park and Rides at Capital Metro

Highlights

1. 14 Park and Rides
2. Size ranges from small (<50 spaces) to large (500+) spaces
3. Oldest- North Lamar Transit Center (1986)
4. Newest- Manor Park and Ride
5. Largest- Leander Station
6. Busiest- Lakeline (served by both bus and MetroRail)



Figure 1-1: Capital Metro's Existing Park-and-Ride Locations



Note: Cap Metro services the Elgin park-and-ride, which is owned by CARTS.



CURRENT SERVICE AREA

- All of the areas currently served by CapMetro



- Local Routes



- Park & Ride



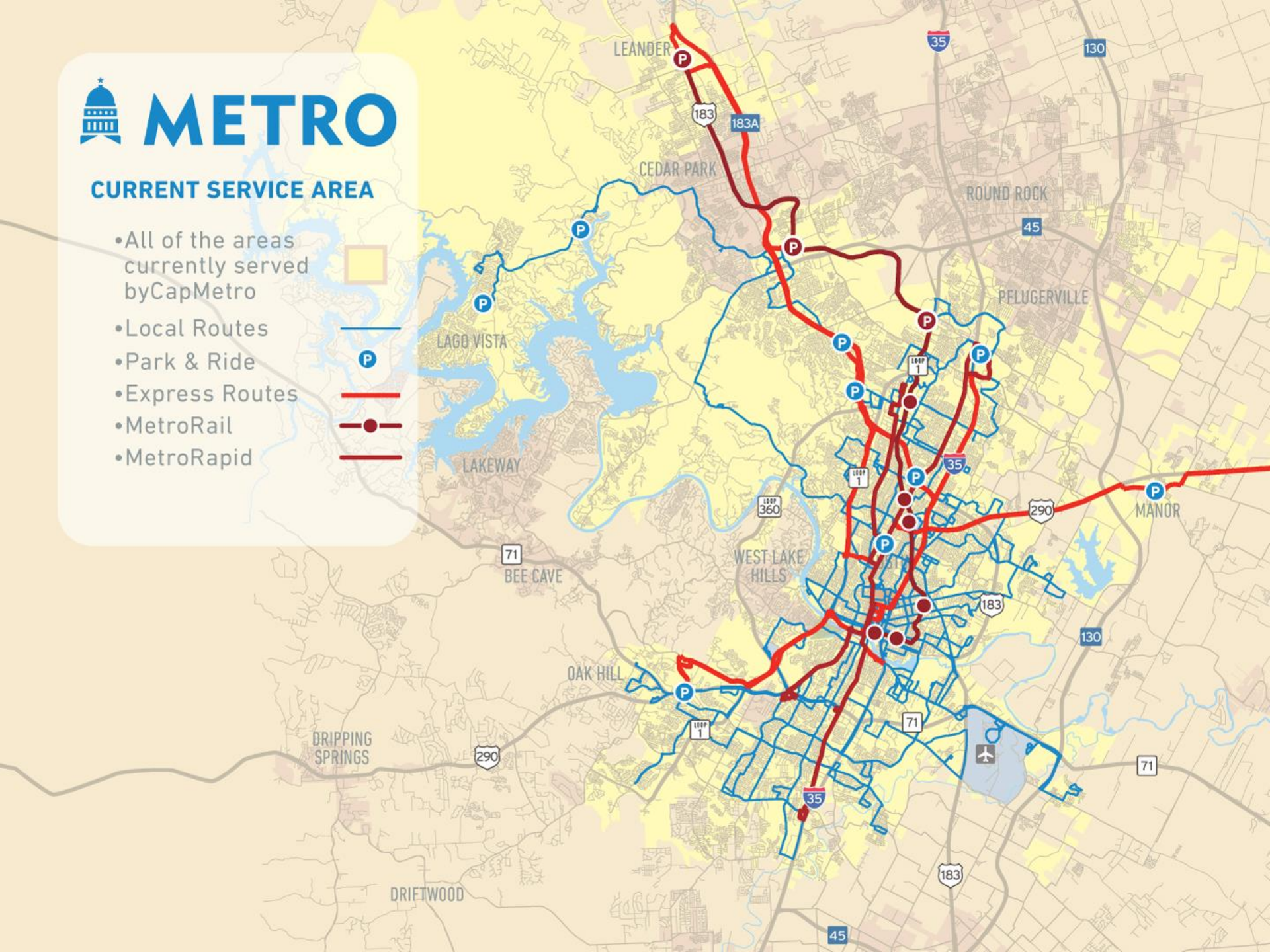
- Express Routes



- MetroRail



- MetroRapid



Looking to the Future

Park and Ride Initiative

Planning Efforts to Date

- Initiated by ServicePlan 2020 (2010)
 - Conducted market analysis
 - Identified potential commuter markets

TABLE 2-1: COMMUTER SHED RANKING COMPARISON

Origin Corridor	<u>CAMPO Travel Demand Model Data</u>		<u>CAPCOG LEHD Data</u>		Combined (Average) Rank
	Downtown Trips	Rank	Downtown Jobs	Rank	
IH-35 North	11,663	1	5,433	1	1
IH-35 South	10,453	2	4,255	2	2
Loop-360/FM-2244	6,745	3	2,026	4	3
US-183 North	4,455	6	2,455	3	4
US-290 West	5,938	5	1,611	5	5
US-290 East	6,254	4	1,062	7	6
RR-2222	4,412	7	1,323	6	7
SH-71 East	3,510	8	948	8	8
SH-71 West	2,869	9	728	9	9
US-79	1,532	10	429	10	10
US-183 South	1,440	11	135	12	11
FM-1431	1,172	12	154	11	11

Source: Capital Metro Service Plan 2020

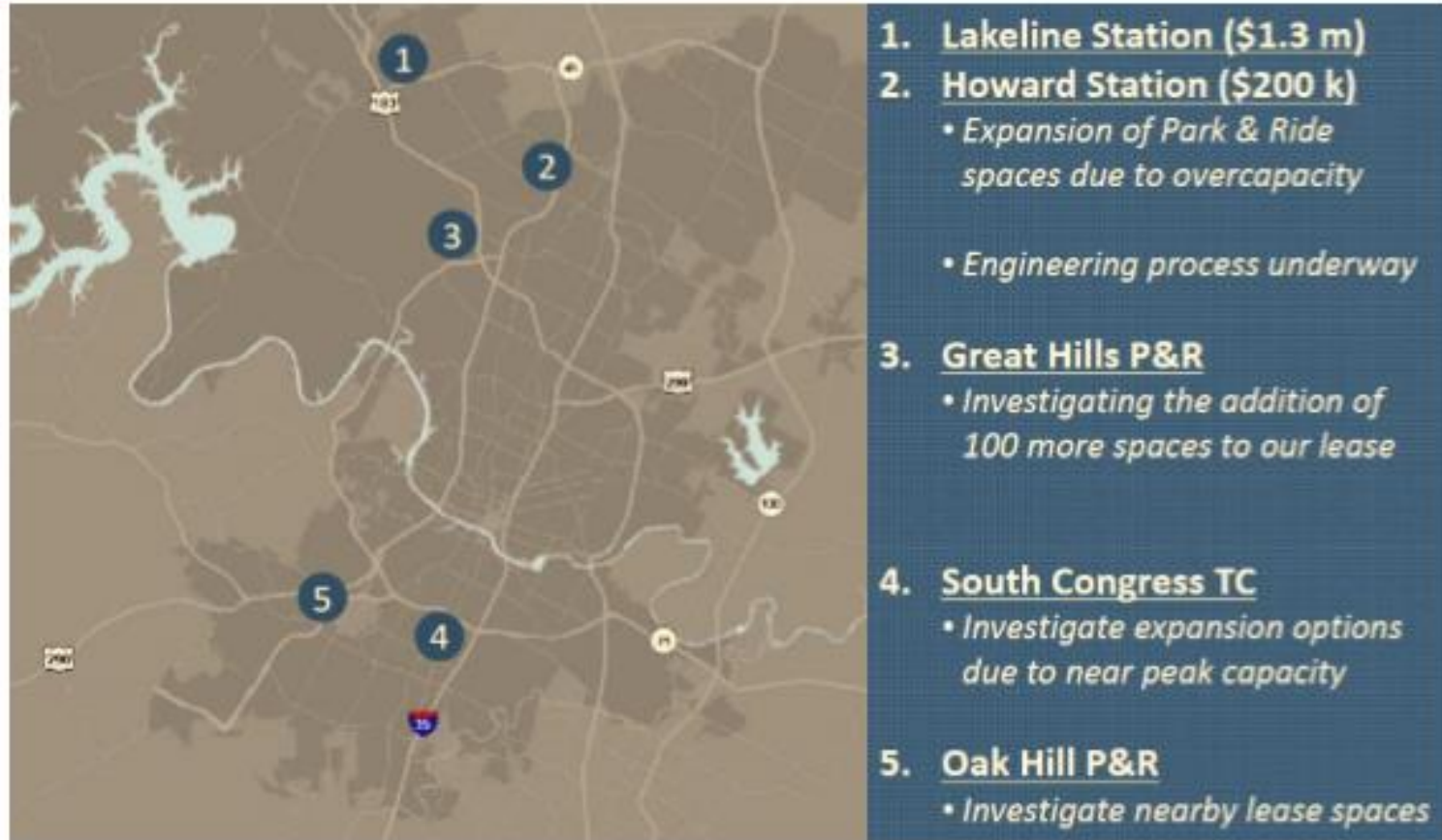
Planning and Development Work

- Work continued as part of Project Connect High Capacity Transit System Plan
- Recognition of opportunities presented by agency partners
 - City of Austin / TxDOT I-35 initiative
 - CTRMA projects
- Prompt to revisit community needs after urban rail initiative
- Continued development as part of Connections2025 Study



Active Projects

Figure 5-1: Short-Term Existing Facility Expansion Recommendations (2015-2017)



Active Projects

Figure 5-2: Short-Term New Facility Recommendations (2015-2017)



6. Westgate

- *Park & Ride/Transfer Center for 803-MetroRapid & Local Buses*
- *Included in Project Connect and All Systems Go plans*
- *Conceptual engineering for facility under Ben White (TXDOT R.O.W.)*

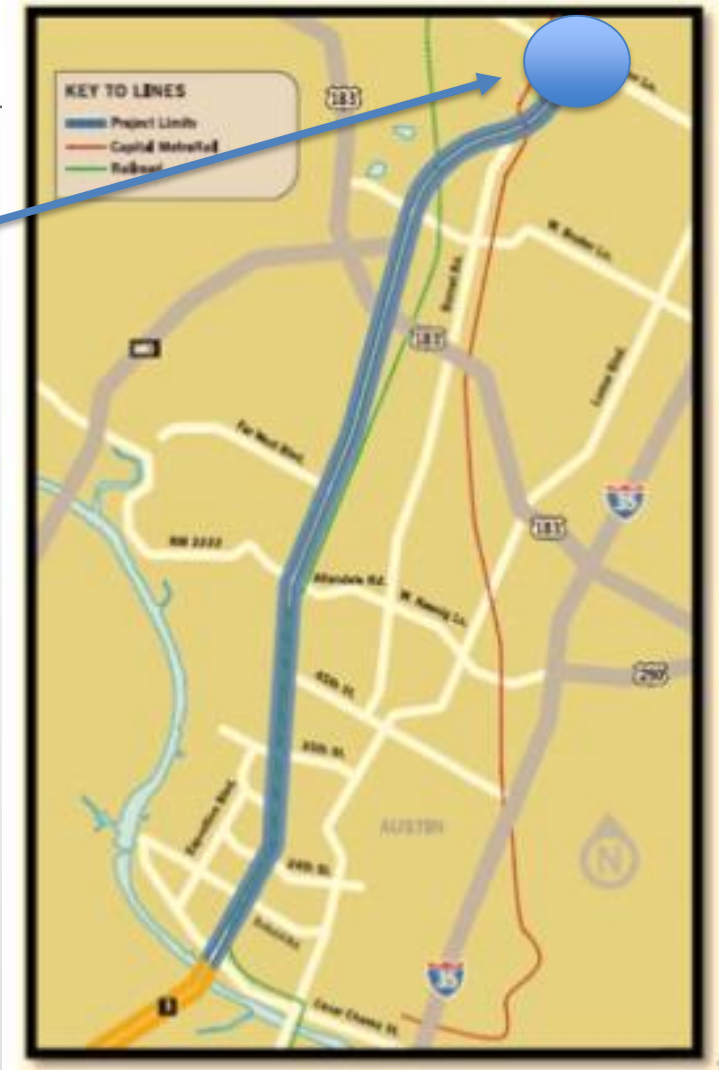
7. Southpark Meadows

- *Shared parking agreement now*
- *Seeking lease agreement for 50 commuter spaces and 75 special event spaces*

Active Projects

- New, leased Park and Ride at Howard and MoPac
- Re-align some services from existing Park and Rides to maximize benefit of Express Lanes

Figure 5-6: North MoPac Express Lanes



Longer Term Initiatives

Figure 5-7: 183 North Mobility Project

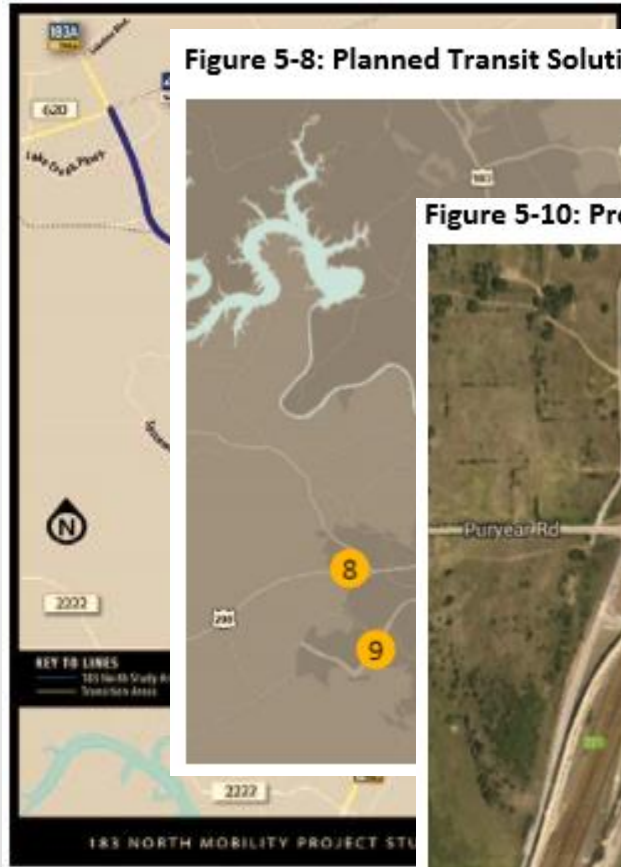


Figure 5-8: Planned Transit Solutions in Southwest Corridor



8. Oak Hill

- *New Express Route 971 in Long-*

Figure 5-10: Proposed South I-35/SH 45 Park-and-Ride



10. South I-35/SH-45 S

- *Regional park-and-ride (Service Plan 2020)*
- *New Express Route 945 in Long-Range Financial Plan*
- *Preliminary engineering in recent past (338 spaces)*
- *Need to identify capital funding*

[illegible]

- [illegible]

Questions?



Todd Hemingson, AICP
VP Strategic Planning & Development
Capital Metro
todd.hemingson@capmetro.org