



TRANSPORTATION SAFETY & VISION ZERO



Austin City Council Work Session, Dec. 8, 2015

Austin Police Department

Austin Transportation Department

Planning and Zoning Department



Today's Presentation

- Statistics
- Vision Zero Action Plan
- Current Safety Efforts
- Next Steps



64 people die in crashes
in the average year

Source: APD

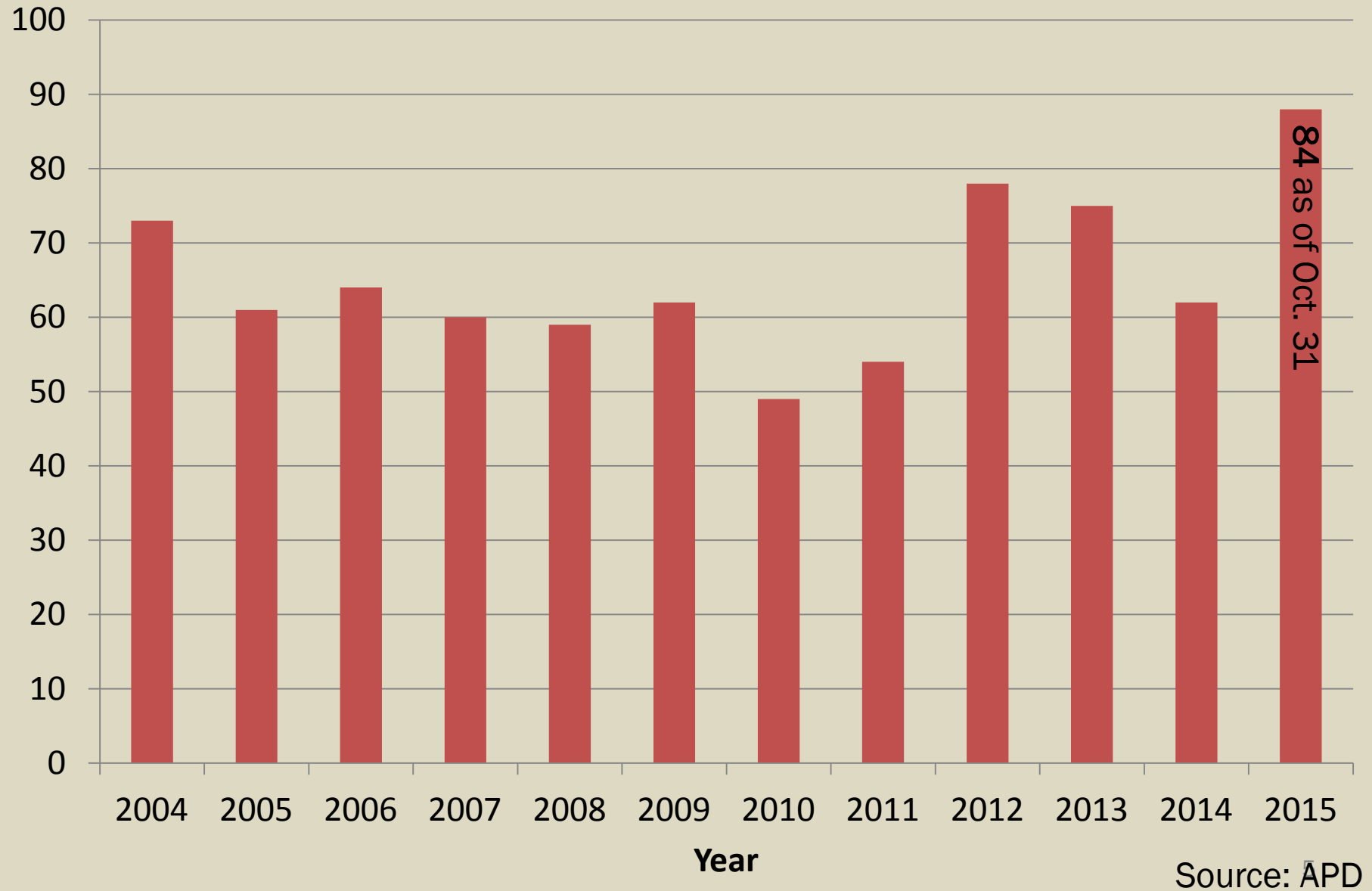


Over 700 total traffic fatalities since 2004

Austin ranks 7th for pedestrian fatality rate per 100K population

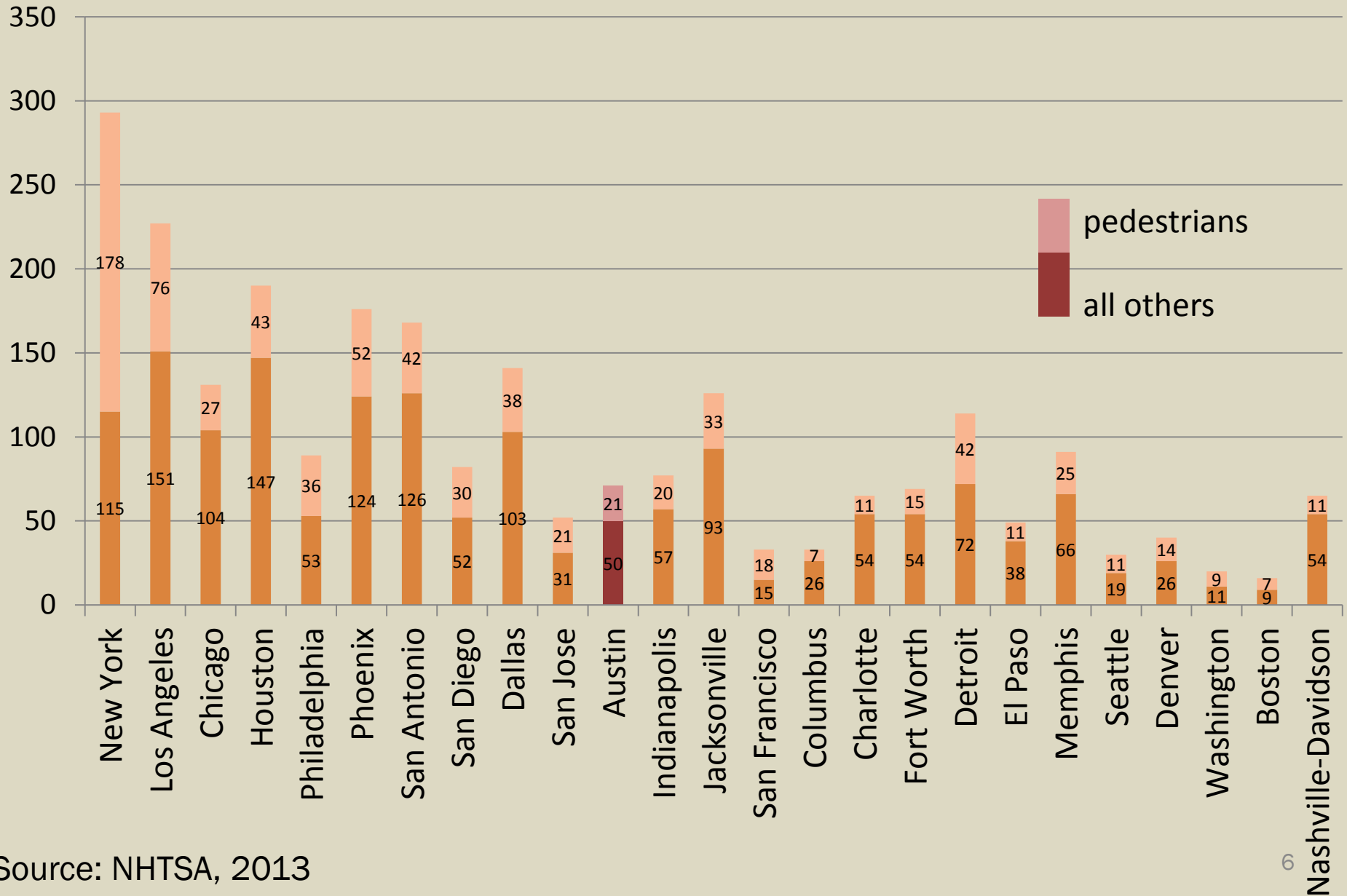


Austin traffic deaths



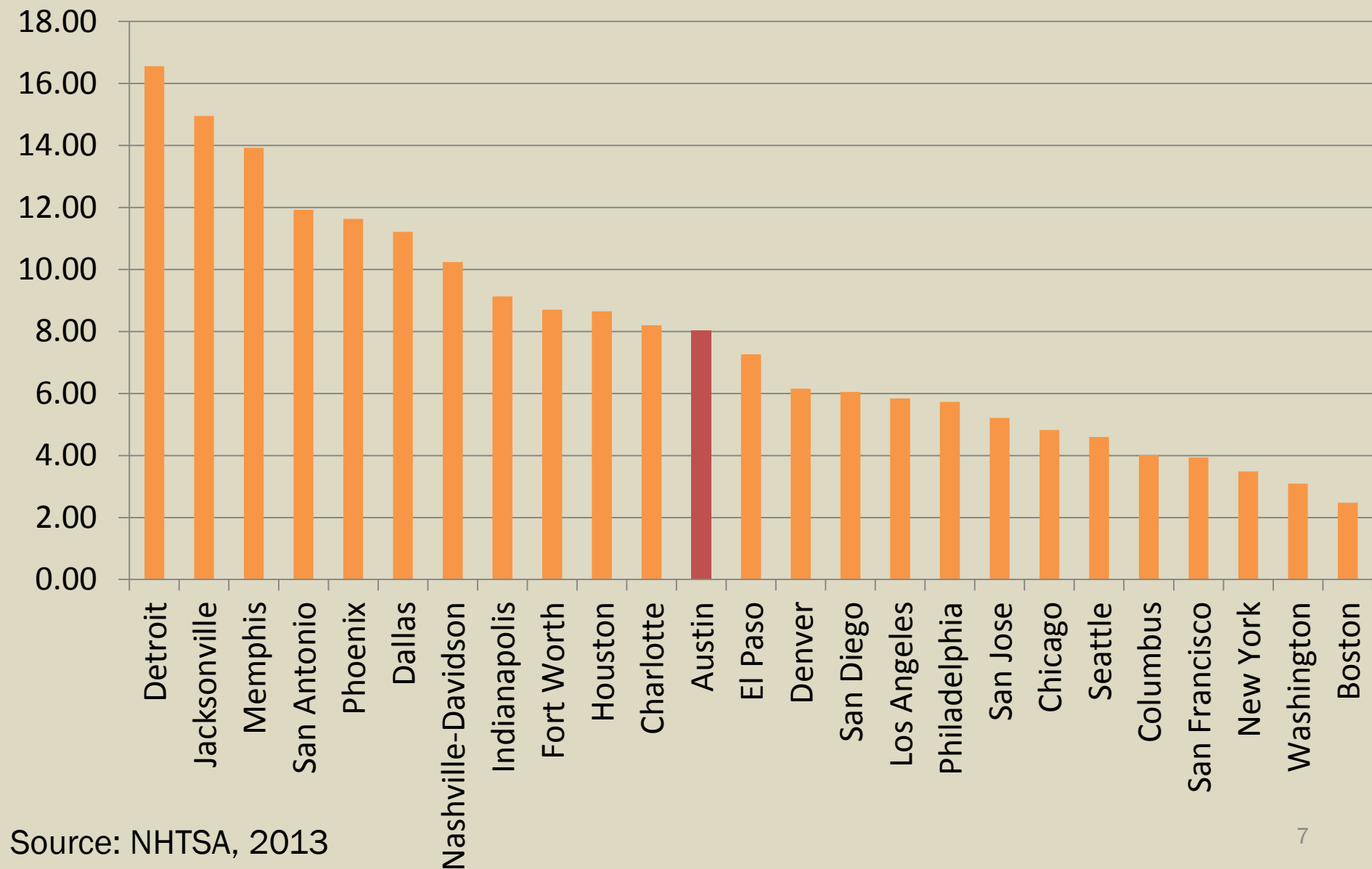


Comparison to other cities





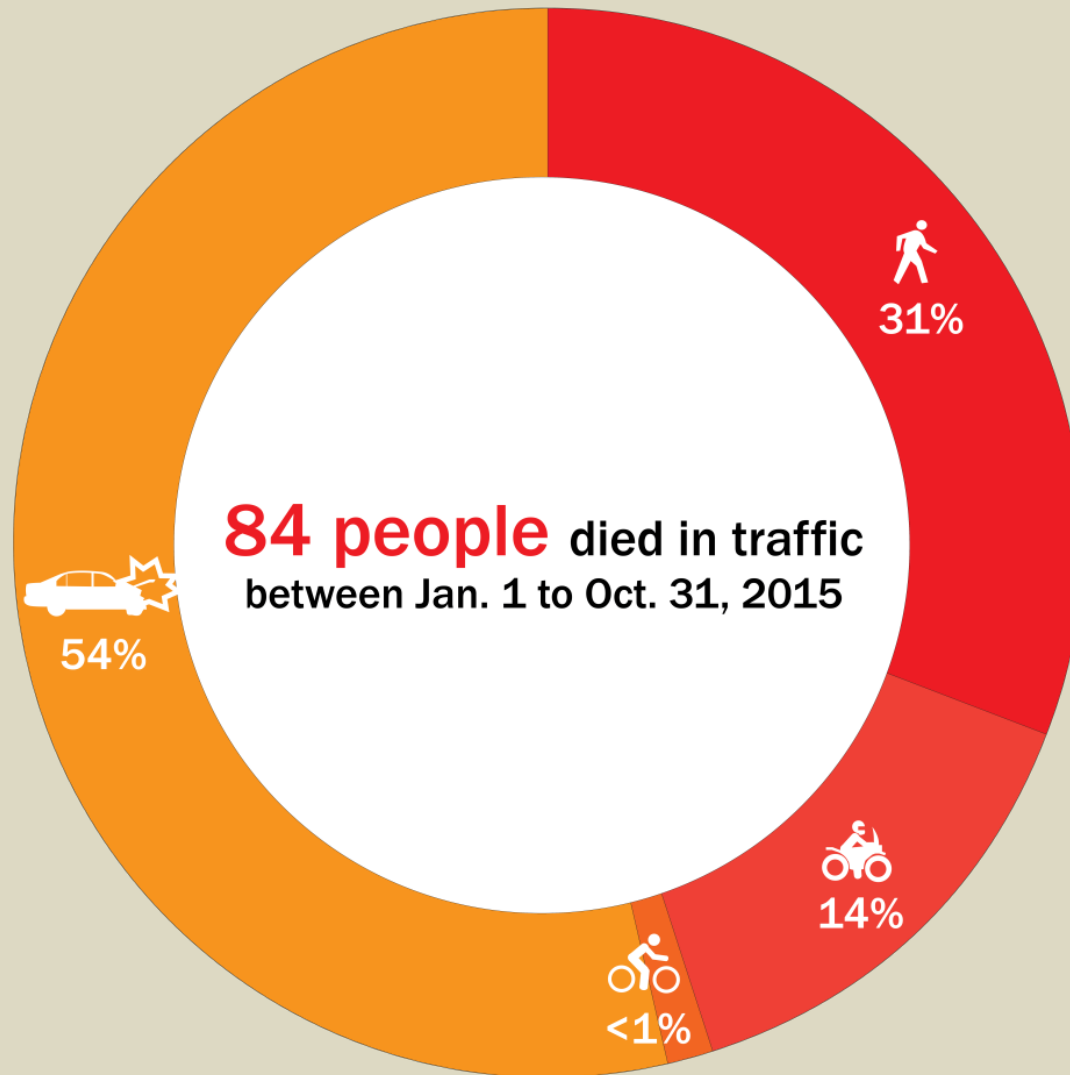
Fatality rate per 100K



Source: NHTSA, 2013



2015 Deaths by Transportation Mode through Oct. 31



Source: APD



2015 Fatalities Notable Findings

January 1, 2015 – October 31, 2015

Impairment

- Motor Vehicles = 59%
- Pedestrians = 44%
- Motorcycle = 50%

Pedestrians

- In a Prohibited Area = 92%
 - ❖ Crossing or On a Highway (I-35, US 183, etc.)
 - ❖ Crossing Mid-Block
- Transients = 42%
- 6pm – 6am = 84%

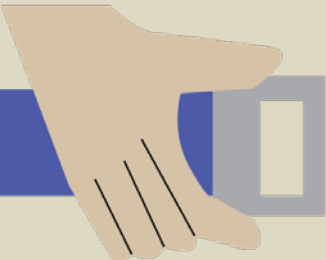
Source: APD as of Oct. 31, 2015

Driver's License Issues

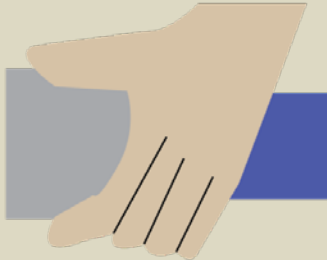
- Motor Vehicles
 - ❖ No valid license = 30%
 - ❖ Previous suspension = 30%
 - ❖ Prior APD involvement = 70%
- Motorcycles
 - ❖ No valid license = 42%
 - ❖ Previous suspension = 25%
 - ❖ Prior APD involvement = 58%



any traffic death is too many

An illustration of a hand buckling a seatbelt. The hand is light-skinned with three black lines on the back. It is holding a blue seatbelt strap and a grey rectangular buckle. The background is a solid blue color.

Public health problem
like smoking or not wearing a
seatbelt

An illustration of a hand buckling a seatbelt. The hand is light-skinned with three black lines on the back. It is holding a blue seatbelt strap and a grey rectangular buckle. The background is a solid blue color.



Traffic injuries & deaths are
preventable; therefore
none are acceptable



Improving safety

will require everyone



Safety is the **primary**
consideration in transportation
decision-making



Traffic safety solutions must be addressed **holistically** through **education, enforcement, engineering/design**



Imagine Austin amendment

Policy: “The City commits itself to eliminating transportation-related deaths and serious injuries ...

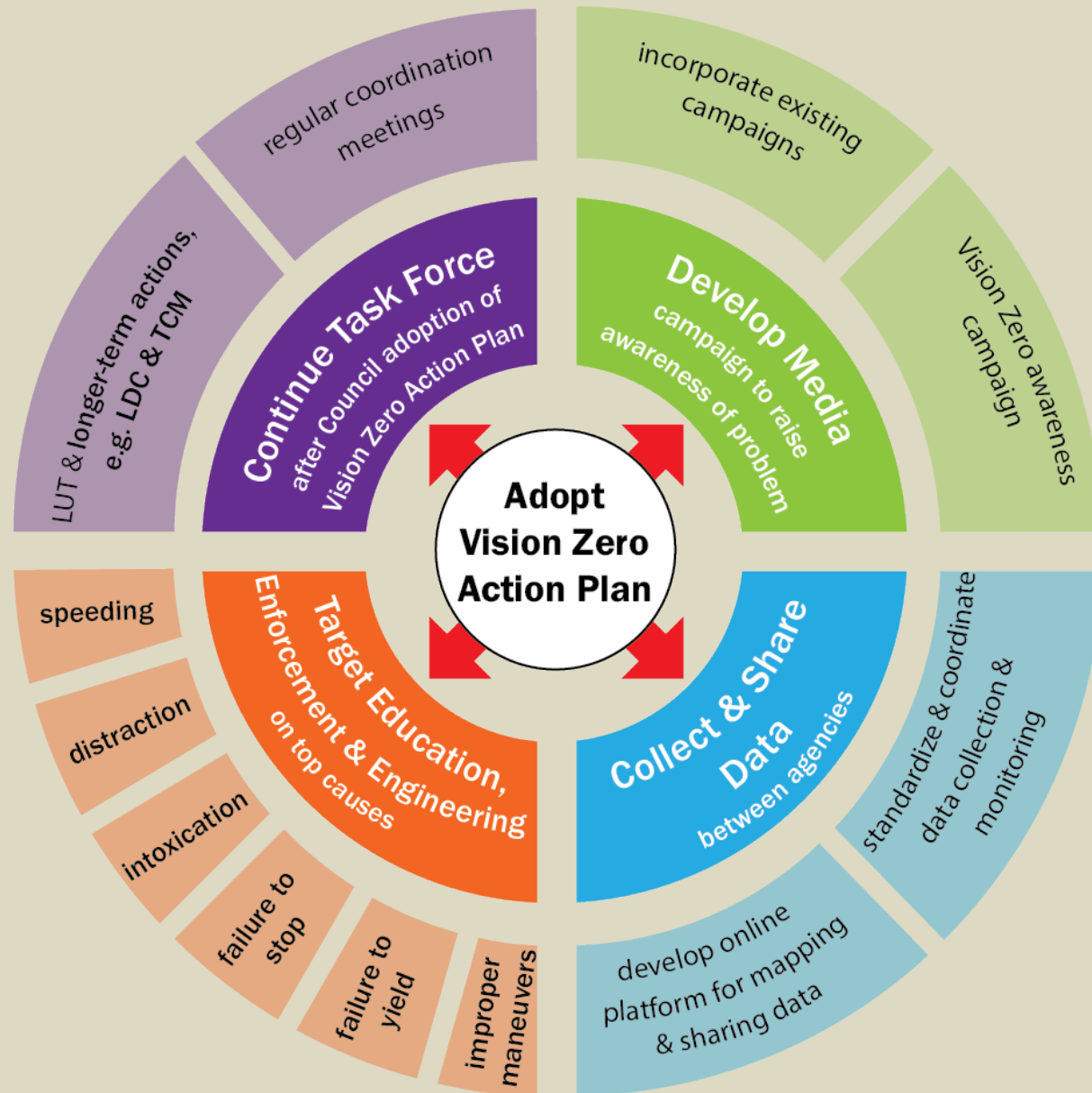
Improving safety through land use, urban design, transportation engineering, education, and enforcement is **foundational to Austin becoming a city of complete communities.**

Safety is the top priority for the transportation system and requires a collaborative, multipronged approach using the guiding principles of Vision Zero...”

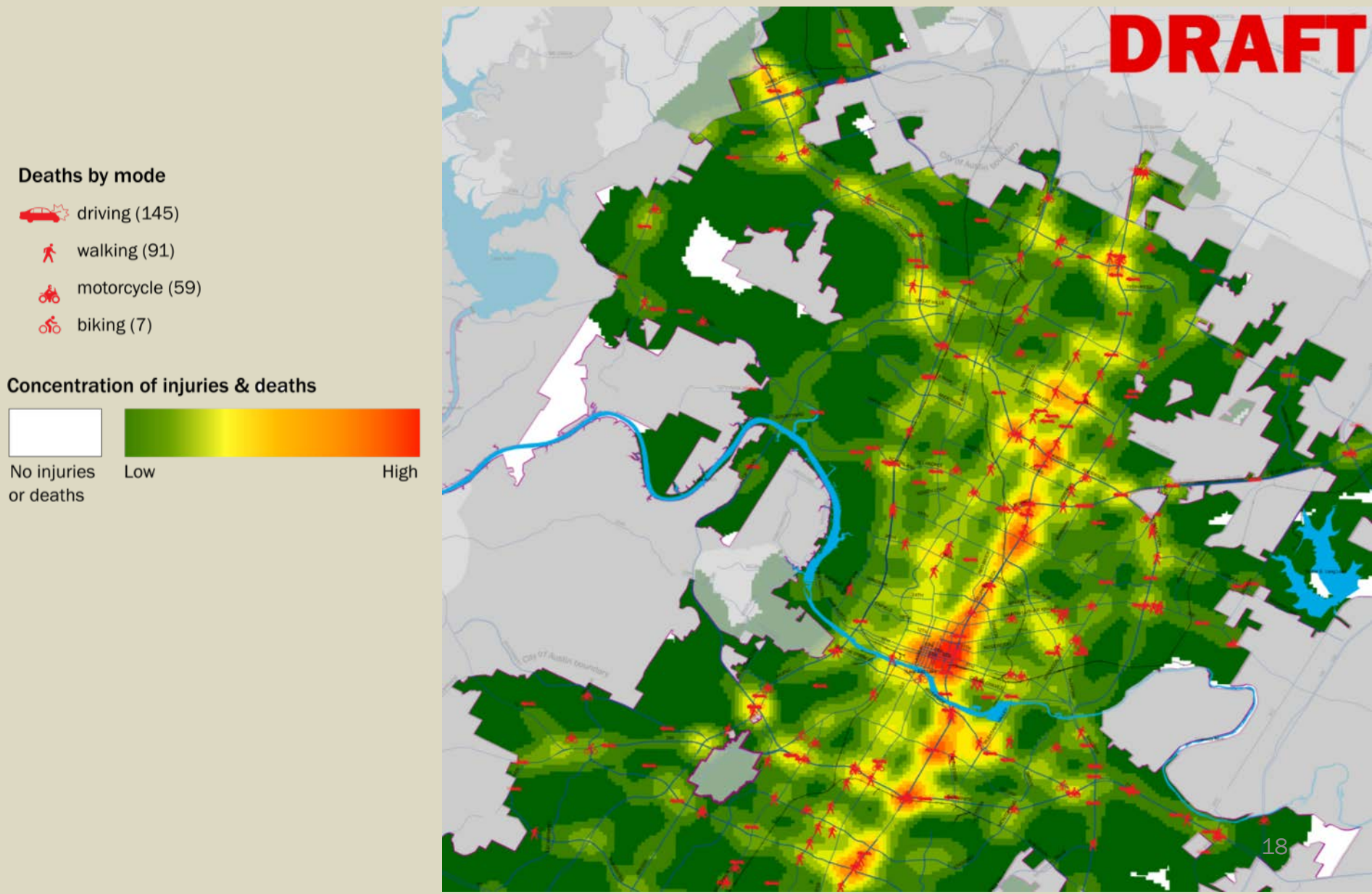
Action: “Create an ongoing Vision Zero Task Force to develop a Vision Zero Action Plan and subsequent updates to that Action Plan”



Identifying Solutions: V0 Action Plan



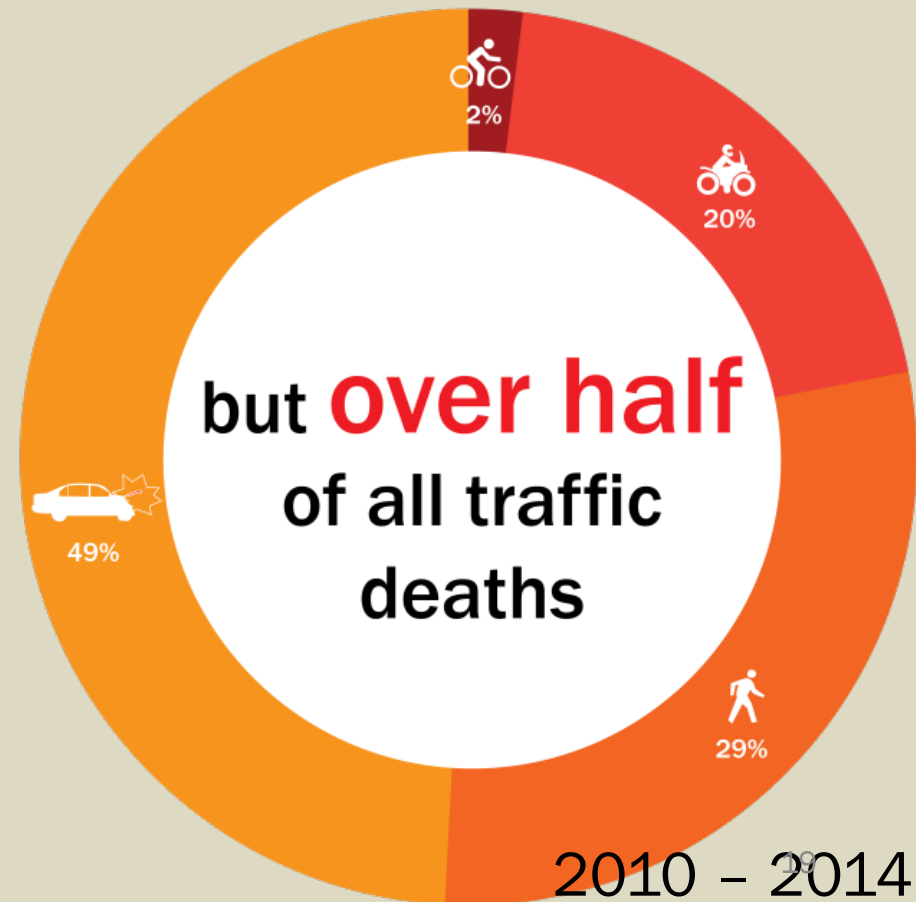
1. Collect & Share Data



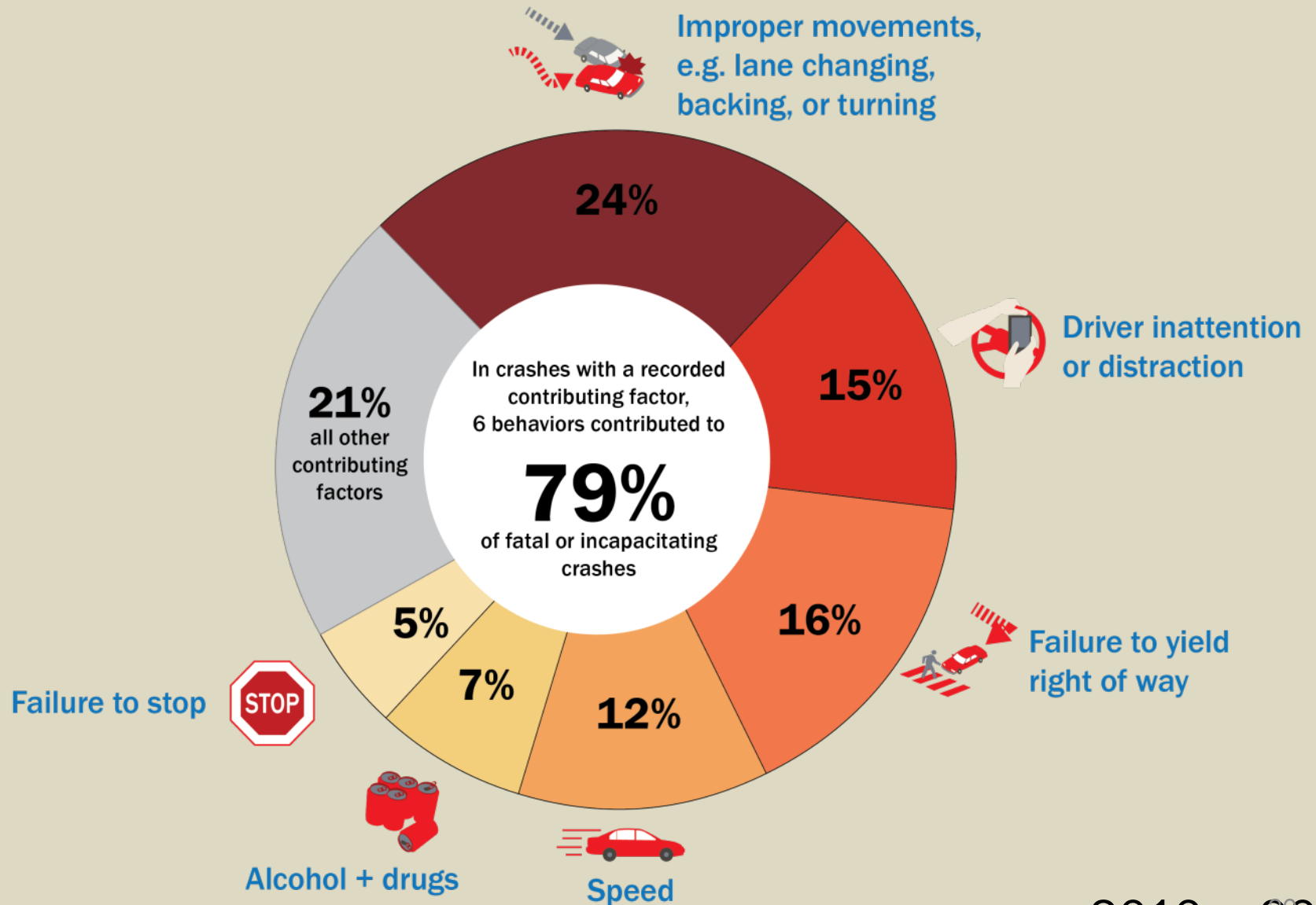


Who's Affected?

disproportionately, people walking, biking, & riding motorcycles



Contributing Factors – doesn't include charges or may have contributed



2010 – 2014



2. Target Education, Enforcement & Engineering





Incapacitating Injuries & Deaths Road Network Map

A detailed map of Austin, Texas, showing the road network. Major highways are highlighted in orange, and local roads are in black. Water bodies like Lady Bird Lake and Barton Creek are shown in blue. The map is overlaid with a grid of street names. A semi-transparent white box with green and blue text is centered over the map.

Over **69%** of deaths & incapacitating injuries occur on just over **8%** of Austin's road miles

3. Develop Media Campaign



WHERE TO?
THE SIX TRAIN OR SIX FEET UNDER?

The choice is simple.
Choose not to drink and drive.



After you drink, think.



4. Continue the Vision Zero Task Force



Safety Programs and Initiatives

On-Going Programs

- Arterial Management - Pedestrian Hybrid Beacons, Rectangular Rapid Flashing Beacons, Accessible Pedestrian Signals
- Active Transportation - Bicycle and Pedestrian Network Implementation
- Traffic Management - Local Area Traffic Management Program
- APD - Impaired Driving Reduction Programs
- Public Works - Safe Routes to School Program
- Other ATD Programs - Get Home Safe Website, Free Overnight Parking, Safe Choice Reimbursement


40+ City Transportation Safety Initiatives

Near-Term Action

- Mayors' Challenge for Safer People, Safer Streets
- Safety Improvement Plan Identifying the top 25 crash locations for immediate improvements. 5 intersections are funded for FY16.
- Pedestrian Safety Action Plan
- Vision Zero Task Force
- Fatality Review Board

Long-Term Planning

Comprehensive Transportation Safety Plan



US DOT's Mayors' Challenge for Safer People, Safer Streets



Seven Challenges

1

Implement Complete Streets Approach

2

Identify and Address Barriers

3

Gather and Track Data

4

Use Context Sensitive Design

5

Build Bike/Ped Networks w/Resurfacing

6

Improve Safety Laws

7

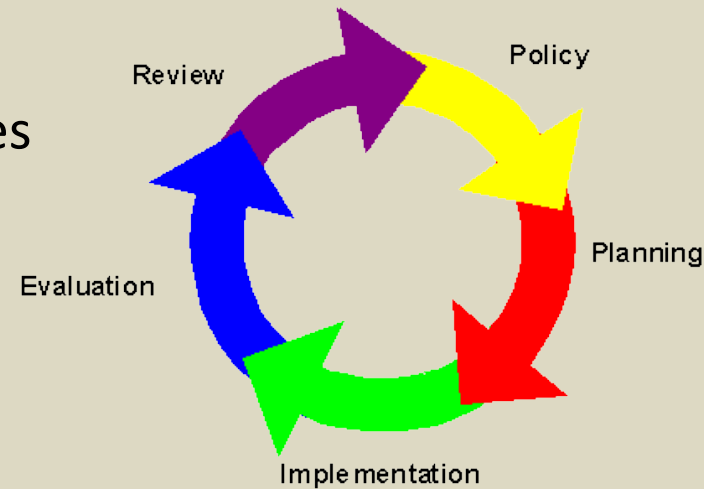
Educate and Enforce Safe Behavior



Safety Improvement Plan

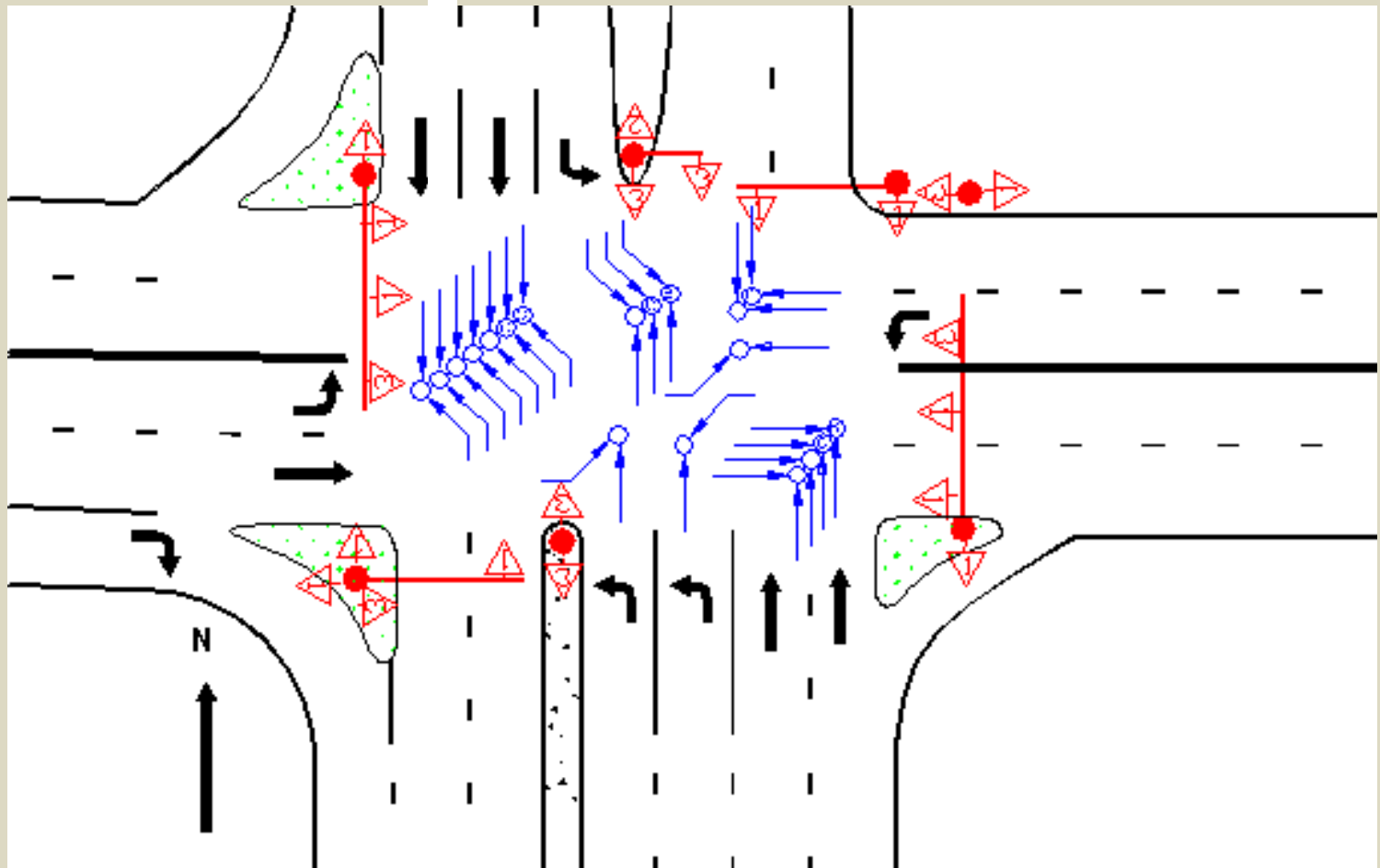
Program Outline

- Rank and Map Collision Prone Locations
- Perform Detailed Engineering Safety Studies
 - Site Investigation
 - Collision Analysis
 - Geometric and Operational Analysis
 - Identify Deficiencies Contributing to Collisions
 - Recommend Improvements
- Develop Implementation Plans – Short, Medium and Long Terms
- Pursue/Identify Funding and Implement High Priority Improvements
- Evaluate/Check



Safety Improvement Plan

Collision Diagram




Day 1 FY16: Slaughter/Manchaca

kxan IN-DEPTH. INVESTIGATIVE.

NEWS • WEATHER • TRAFFIC • INVESTIGATIONS • REPORT IT • MARKETPLACE • MORE

Dangerous South Austin intersection sees safety improvements

By Claire Ricke
Published: October 2, 2015, 9:31 am | Updated: October 2, 2015, 12:03 pm



Deadly crash on Manchaca Road at Slaughter Lane

Related Coverage

Austin Police report: Most deadly crashes happen after midnight

Deadly crash blocks Manchaca Road at W. Slaughter Lane

AUSTIN (KXAN) — Five of Austin's most dangerous intersections are receiving safety improvements this fiscal year. The year began Oct. 1, already bringing changes to the first deadly intersection at Slaughter Lane and Manchaca Road.

The leader of

South Austin **Patch** Find Your Patch


Patch LocalStream Advertise With Us All Topics > Politics & Government

Safety Improvements Made To Dangerous South Austin Intersection

The city made the changes on the first day of the new fiscal year.

South Austin, TX

By STEPHANIE GASKELL (Patch Staff)
October 2, 2015



29

Pedestrian Safety Action Plan



GOALS

- ☐ To reduce pedestrian fatalities and injuries by focusing on strategies that have the greatest crash reduction factors.
- ☐ To encourage walking by developing strategies for investing in pedestrian facilities and programs.

Immediate Actions

- **Continue current initiatives** while working to expand education & enforcement
- **Expand DWI No Refusal**
- **Review policies & ordinances** related to DL, pedestrian, and insurance violations
- **Design and implement** safety improvements at Top 5 crash locations.

Analysis & Planning

- Present **Draft Vision Zero Action Plan** to Pedestrian Advisory Council & other groups
- Request Council action on **Vision Zero Action Plan**
- **Expand analysis** of high crash locations
- Complete **Pedestrian Safety Action Plan**
- Launch **Comprehensive Transportation Safety Plan**