



**City Council Questions and Answers for
Thursday, January 28, 2016**

These questions and answers are related to the
Austin City Council meeting that will convene at 10:00 AM on
Thursday, January 28, 2016 at Austin City Hall
301 W. Second Street, Austin, TX



Mayor Steve Adler
Mayor Pro Tem Kathie Tovo, District 9
Council Member Ora Houston, District 1
Council Member Delia Garza, District 2
Council Member Sabino Pío Renteria, District 3
Council Member Gregorio Casar, District 4
Council Member Ann Kitchen, District 5
Council Member Don Zimmerman, District 6
Council Member Leslie Pool, District 7
Council Member Ellen Troxclair, District 8
Council Member Sheri Gallo, District 10

The City Council Questions and Answers Report was derived from a need to provide City Council Members an opportunity to solicit clarifying information from City Departments as it relates to requests for council action. After a City Council Regular Meeting agenda has been published, Council Members will have the opportunity to ask questions of departments via the City Manager's Agenda Office. This process continues until 5:00 p.m. the Tuesday before the Council meeting. The final report is distributed at noon to City Council the Wednesday before the council meeting.

QUESTIONS FROM COUNCIL

1. Agenda Item # 10: Authorize execution of a construction contract with AUSTIN UNDERGROUND, INC., for the Main to Junction 420 Downtown Area project in the amount of \$4,732,997.65 plus a \$236,649.88 contingency, for a total contract amount not to exceed \$4,969,647.53.
 - a. QUESTION: 1) Can you please provide a copy of the Construction Contract? 2) What is the estimated "net new" revenue that this project is expected to bring in each year over the next 5 Fiscal Years? 3) Is this reclaimed water going to "cannibalize" any current water usage? 4) If so, what is the estimated amount of "cannibalization" in each year over the next 5 Fiscal Years? COUNCIL MEMBER ZIMMERMAN'S OFFICE
 - b. ANSWER: See attachment.
2. Agenda Item # 11: Authorize negotiation and execution of a professional services agreement with KIMLEY-HORN AND ASSOCIATES, INC. (staff recommendation) or the other qualified responder to Request for Qualifications Solicitation No. CLMP189A, to provide professional engineering services for the Austin Transportation Department Traffic Management Center Operations Expansion Project in an amount not to exceed \$2,000,000 for a period of one year and three 12-month extension options in an amount not to exceed \$1,500,000 per extension, for a total contract amount not to exceed \$6,000,000.
 - a. QUESTION: Can you provide some metrics and an estimated cost? I'd like to see some more details about this project. COUNCIL MEMBER ZIMMERMAN'S OFFICE
 - b. ANSWER: See attachment.
3. Agenda Item # 13: Authorize execution of a construction contract with MATOUS CONSTRUCTION, LTD., for the South Austin Regional Wastewater Treatment Plant Tertiary Filter Improvements project, in the amount of \$24,718,610 plus a \$1,235,930 contingency in an amount not to exceed \$25,954,540.
 - a. QUESTION: Can you please provide a copy of the Construction Contract?

COUNCIL MEMBER ZIMMERMAN'S OFFICE

- b. ANSWER: Documents related to this solicitation are also available on AFO under the 'attachmen including the bid tabulation and the relevant contract documents. A direct link to this solicitation https://www.ci.austin.tx.us/financeonline/vendor_connection/solicitation/solicitation_details.cf
- 4. Agenda Item # 14: Authorize negotiation and execution of a three-year interlocal agreement with Austin Community College for professional career education classes for City employees in an amount not to exceed \$500,000.
 - a. QUESTION: 1) How long has the City had this agreement with ACC? 2) How many people have taken advantage of it in that time? COUNCIL MEMBER HOUSTON'S OFFICE
 - b. ANSWER: 1) This would be a new arrangement, so there is no history. 2) In studying this RCA, 17 departments/offices expressed an interest in taking advantage of it, once in place.
 - c. QUESTION: 1) What is the backup "Interlocal Agreement"? 2) What is the significance of the highlighted items? 3) Have we had a similar Interlocal Agreement in the past with ACC? If so, can you provide a copy of that agreement? 4) If we had agreement in the past, do we have any metrics (not to exceed amount, amount spent, # of people trained, # of classes, etc. per year) regarding the program? 5) What is the total training budgets vs. this agreement with ACC? 6) Do we have other training Interlocal Agreements to other organizations such as the University of Texas? 7) If so, which organizations and what is the not to exceed amount(s)? COUNCIL MEMBER ZIMMERMAN'S OFFICE
 - d. ANSWER: 1) The backup that was attached with the RCA was a draft of the Interlocal Agreement. 2) Because the backup was a draft of the Interlocal Agreement and the RCA requested authorization of negotiation, the backup material contained a draft with highlighted items that were not final. 3) There is no other ILA with ACC in our records. 4) NA 5) NA 6) According to information provided by the Budget Office, the City's training budget is \$3,581,950 for FY 2016. This ILA provides for a three-year period, wherein the annual average amount (per the overall not-to-exceed amount) of \$166,666.67. 7) The City had a training ILA for city staff with the University of Texas at Austin, LBJ School for a Management Develop Training, with a not-to-exceed amount of \$21,815 for 40 participants.
- 5. Agenda Item # 21: Approve a resolution amending Resolution No. 20141106-019, to amend the South Congress Preservation and Improvement District Service Plan and Budget for 2015. Related to Items # 19, # 20, and # 58.
 - a. QUESTION: 1) What do the startup fees represent? 2) Does the City usually pay such fees? COUNCIL MEMBER HOUSTON'S OFFICE

- b. ANSWER: Startup expenses in Exhibit A-1 represent legal expenses incurred by the South Congress Improvement Association to negotiate a management agreement with the City for administration of the South Congress Public Improvement District service plan and budget. Currently there are two established commercial PIDs within the City which include Downtown Austin and East Sixth Street (Downtown). These PIDs did not include startup expenses in their initial operating budgets. However, per the Local Government Code Sub Section 372.003. (b)(14) payment of expenses incurred in the establishment, administration and operation of the district are eligible activities that a public improvement district may include in its operating budget. These expenses will not be paid directly from the City's general fund or the Economic Development Department's operating budget but will be paid from the annual assessment on properties within the South Congress PID geographic area.
- 6. Agenda Item # 24: Approve the negotiation and execution of a contract with LATINO HEALTHCARE FORUM to implement health improvement strategies for a 12-month term from February 1, 2016 through January 31, 2017, in an amount not to exceed \$175,000, for a total contract amount not to exceed \$175,000.
 - a. QUESTION: 1) What does the \$175,000 get? What programming is expected to take place between now and Jan 31, 2017? What are the goals and measures of success for those programs? Is there an estimated ongoing cost for this program? 2) How many of the 20 people trained will be hired? 3) Are these part time positions or full time? 4) What are the goals of the Advocacy and service navigation? 5) What and how much technology is being procured? 6) Who is the "major technology company" donating \$75,000? COUNCIL MEMBER ZIMMERMAN'S OFFICE
 - b. ANSWER: See attachment.
- 7. Agenda Item # 25: Authorize the negotiation and execution of an interlocal agreement with the TEXAS DEPARTMENT OF STATE HEALTH SERVICES to purchase human immunodeficiency virus (HIV) medication for eligible clients of the Ryan White Part A HIV Emergency Relief Project grant, for a six-month term from January 1, 2016 through June 30, 2016, for a total contract amount not to exceed \$400,000.
 - a. QUESTION: Is there a firm cap on the percent of federal Ryan White funds that can be used for administration? If so, what is that cap? If there is a cap, what mechanism does the federal government employ to ensure compliance? COUNCIL MEMBER HOUSTON'S OFFICE
 - b. ANSWER: There is a cap on administration. It is 10% of the grant award. The cap is monitored via grantee reports to the Federal Department of Health and Human Services. Sub recipients(contractors) provide monthly expenditure reports to HHSD detailing administrative and programmatic costs. HHSD use

these reports to ensure that we are meeting the federal caps on administration and provide an annual Federal Financial Report (FFR) to the Health Resources and Services Administration (HRSA), an agency of the U.S. Department of Health and Human Services detailing all grant expenditures.

8. Agenda Item # 29: Authorize award and execution of two 12-month contracts for exempted sole source subscription services for the Austin Public Library with PROQUEST LLC in an amount not to exceed \$96,163, and with CENGAGE LEARNING, INC. in an amount not to exceed \$86,424.66, for a total amount not to exceed \$182,587.66.
 - a. QUESTION: 1) How long have the libraries been procuring these resources? 2) What was the annual cost for each of them in the last contract? 3) How many years was the previous contract? 4) Does the library keep usage stats on any of these items (how many times they were checked out, how many people used them, etc.)? 5) If so, what were those stats for each of the previous 3 years? COUNCIL MEMBER ZIMMERMAN'S OFFICE
 - b. ANSWER: See attachment.
9. Agenda Item # 33: Approve execution of an interlocal agreement with the City of San Antonio for 911 call continuity of operations during critical instances.
 - a. QUESTION: 1) What is the fiscal impact to the City concerning the Interlocal Agreement with the City of San Antonio for 911 call continuity of operations during critical instances? 2) How long have we had this agreement with the City of San Antonio and with what other jurisdictions or municipalities do we have similar agreements? COUNCIL MEMBER HOUSTON'S OFFICE
 - b. ANSWER: 1) There is no financial impact. 2) We do not have an agreement in place with San Antonio yet. We have a similar agreement in place with Round Rock.
10. Agenda Item # 39: Authorize negotiation and execution of a 12-month contract with CREATIVE CONSUMER RESEARCH INC., or one of the other qualified offerors to Request for Proposal RMJ0302, for marketing research service studies, in an amount not to exceed \$300,000, with four 12-month extension options in an amount not to exceed \$300,000 per extension option, for a total contract amount not to exceed \$1,500,000.
 - a. QUESTION: 1) Who had the previous contract been awarded to? 2) How long was that contract for? 3) What was the not to exceed amount for the previous contract? 4) What metrics were used to rate if the market research service studies were effective? 5) What metrics will be used going forward to verify if the market research services study is effective? COUNCIL MEMBER ZIMMERMAN'S OFFICE
 - b. ANSWER: 1) The previous contract is with the current providers, Creative

Consumer Research, Inc. 2) The current contract term is from October 1, 2010 to February 27, 2016. 3) The current contract total amount to exceed is \$1,558,000. 4/5) There are several measures Austin Energy employs to ensure that the market research we do is effective. At the onset, we sample the calls being made to ensure that their call center is following the prescribed protocols required for phone surveys. We take samples throughout the data collection to ensure we can get a representative sample of our customer base. Within surveys, we may build questions that essentially ask the same question but in a different way to assess the validity of the question as well as the validity of the surveyor. Because many of our surveys are used for trending purposes, a set of questions are repeated over time. Not only does this allow for trend analysis, but it also allows us to assess a test-retest of the questions asked. In addition to these research-based metrics, we have performance-based metrics tied to timelines, quality of work, and level of analysis.

c. QUESTION: 1) Does the provider of the service have the capacity within their organization to engage the diverse populations in the study area? 2) Can MBE /WBE goals be internal to the organizational team that will execute the contract? COUNCIL MEMBER HOUSTON'S OFFICE

d. ANSWER: This item will be postponed to February 4, 2016. Staff will provide a response for next week's Q&A report.

11. Agenda Item # 42: Authorize negotiation and execution of a contract with TCS INTERNATIONAL for the installation of sensors and signage for the implementation of a dynamic parking system for the Transportation Department, in an amount not to exceed \$658,164.

a. QUESTION: 1) Please provide more details regarding what a "dynamic parking system" is. 2) What are the ongoing costs associated with this? What is the estimated life of the technology and equipment? 3) How many parking facilities will be in this system? 4) Will it include just parking garages or street parking as well? Is there a map showing all the locations? COUNCIL MEMBER ZIMMERMAN'S OFFICE

b. ANSWER: See attachment.

12. Agenda Item # 63: Authorize negotiation and execution of all documents and instruments necessary or desirable to sell approximately 9.405 acres of land, located at Lot 1, Block "E", Missouri-Pacific Industrial Park, Section One, a subdivision in Travis County, Texas, according to the map or plat thereof, recorded in Volume 52, Page 21 of the Plat Records of Travis County, Texas, and locally known as 4711 Winnebago Lane, to Jimmy Nassour in the amount of \$1,450,001 for the land (District 2).

a. QUESTION: 1) Have there been requests for Ch 245 determinations (grandfathering) for properties located within the area where this property is located? 2) If the City were to sell this tract, what measures could the City take

to ensure that any future development complies with current code? MAYOR PRO TEM TOVO'S OFFICE

b. ANSWER: See attachment.

13. Agenda Items # 69 and # 70: Approve a resolution directing the City Manager to include consideration of whether to allow digital signage as part of the CodeNext process. 70) Approve a resolution initiating amendments to City Code Chapter 25-10 (Sign Regulations) relating to digital signage.

a. QUESTION: 1) What about signs that are above the height maximum, is there any penalty and how do we bring them into compliance with Code? 2) Is the 1 to 1 replacement of vinyl signs with digital signs in the current draft ordinance? COUNCIL MEMBER HOUSTON'S OFFICE

b. ANSWER: 1) If a sign is above the height maximum, a notice of violation will be issued. If the property owner does not comply voluntarily, a citation will be issued and processed via Municipal Court. Penalties are determined by Municipal Court. 2) The draft resolution attached to Item 70 initiates amendments to City Code Chapter 25-10 and directs the City Manager to develop a proposed ordinance that would allow digital signage and make related changes to existing sign regulations as appropriate. If the resolution passes, staff would consider this kind of issue in preparing a draft ordinance.

14. Agenda Item # 86: Conduct a public hearing and consider on 2nd and 3rd readings an ordinance amending City Code Chapter 25-1 and Ordinance No. 20070621-027 relating to parkland dedication requirements and associated fees imposed as a condition to development approval.

a. QUESTION: How does this revision to Parkland Dedication affect the development of single family-zoned lots? COUNCIL MEMBER HOUSTON'S OFFICE

b. ANSWER: See attachment.


15. Agenda Items # 87 and # 88: Conduct a public hearing and consider an ordinance granting a site specific amendment to City Code Section 25-8-514 and granting variances to City Code Sections 25-8-261 and 25-8-482 to allow redevelopment of St. Catherine of Siena Church (SP-2014-0476C). This action requires a site specific amendment to the Save Our Springs Initiative and concerns property in the Barton Springs Zone. (District 8). # 88) Conduct a public hearing and consider an ordinance regarding floodplain variances for the redevelopment of St. Catherine of Siena Church located at 4800 Convict Hill Road as requested by the owner of the property (District 8). The property is partially in the 25-year and 100-year floodplains of the Kincheon Branch, a tributary of Williamson Creek.


a. QUESTION: Please provide information for closures due to flooding over the past five years in the 4700-4900 blocks of Convict Hill Rd. MAYOR PRO

TEM TOVO'S OFFICE

- b. ANSWER: Based on the flood warning group's historical knowledge, we have not requested that the road be closed due to high water. This is not to say that Convict Hill Road has not been flooded. We know from AFD information (attached), our post storm reconnaissance, and resident reports that it has flooded. The issue is that Kincheon Branch (the tributary name for this creek) and the small un-named tributary to Kincheon that is adjacent to the church property react very quickly to rainfall and the flooding of Convict Hill Road would occur too quickly for our field operations crews to respond. In fact, our floodplain models indicate that the road would flood in at least a 10-year storm event (a flood that has a 10% chance of occurring in any year).

END OF REPORT - ATTACHMENTS TO FOLLOW

 *The City of Austin is committed to compliance with the Americans with Disabilities Act. Reasonable modifications and equal access to communications will be provided upon request.*

 *For assistance, please call 512-974-2210 or TTY users route through 711.*



Council Question and Answer

Related To	Item #10	Meeting Date	January 28, 2016
Additional Answer Information			

QUESTION: 1) Can you please provide a copy of the Construction Contract? 2) What is the estimated "net new" revenue that this project is expected to bring in each year over the next 5 Fiscal Years? 3) Is this reclaimed water going to "cannibalize" any current water usage? 4) If so, what is the estimated amount of "cannibalization" in each year over the next 5 Fiscal Years? COUNCIL MEMBER ZIMMERMAN'S OFFICE

ANSWER:

1) Documents related to this solicitation are available at the direct link to this solicitation below. Under the tab labeled 'attachments' you will find all relevant files for the Main to Junction 420 RCA, including the bid tabulation and the relevant contract documents:

https://www.ci.austin.tx.us/financeonline/vendor_connection/solicitation/solicitation_details.cfm?sid=108030

2) The expected "net new" revenue is expected to increase from \$0 per year to \$164,000 per year at the end of five years. The reclaimed water system, like most water conservation measures, is not expected to break even in the short-term. Benefits are realized in the long-term. For example it defers the construction, and therefore the interest cost of the next increment of water treatment plant expansion. Reclaimed water use also helps put off the LCRA trigger point where Austin will have to begin paying LCRA for water.

3) It is important to note that the primary justification for constructing the reclaimed water system is to assure the long-term water supply for a growing City. Drinking water use displaced by conversion to reclaimed water is made available to other, new drinking water customers. In the 40 years the City has operated a reclaimed water system, new reclaimed water customers have not cannibalized drinking water use to the extent that drinking water revenue has declined.

Anticipated new customers include Butler Park, Auditorium Shores, the Central Library, the Seaholm Development, 208 Nueces (Austin Music Hall site), the Google Building, Republic Square, and Duncan Park. These are major customers that are not currently irrigating with drinking water. We estimate that an additional 15 customers along the alignment will connect. The largest of these is the ACC Rio Grande campus, but most are small lots that are mainly individual residences or businesses, and some of these will convert their current irrigation system from drinking water to reclaimed water.

4) The expected displacement of drinking water revenue will increase from \$0 per year to \$29,000 per year at the end of five years. Please note that this revenue will more than made up by new drinking water customers as the City continues to grow.

Transportation Management Center (TMC) Operations Expansion Contract

Helping Keep
Austin Moving!

Mobility Committee

November 16, 2015



Austin Transportation Department – TMC Operations Expansion Contract

Contract Background

- Pursuing Many Strategies to Keep Austin Moving

- This Contract is One Strategy

Contract for a consultant to manage and staff the City's transportation management center (TMC)

- Expands services
- Expands hours of operation
- 1-year contract with three 1-year renewal options

- Schedule

- Nov. 16, 2015: Qualifications due
- Dec: Selection
- Jan/Feb: Council
- Feb: Negotiate
- Mar: Start



Contract Background

FUTURE → Active Management

➤ Expanded Services

- ✓ Actively monitor critical arterials
- ✓ Coordinate w/partners during incidents
- ✓ Manage lane closures
 - Construction
 - Special events
- ✓ Fine tune signal timing
- ✓ Disseminate traveler information
- ✓ Monitor system health
(e.g., need for maintenance)

➤ Expanded Hours

Today

- ✓ M-F: 6:30a – 6:30p (60 hrs)
- ✓ Special events

Future

- ✓ M-F: 6a - 8p
- ✓ Saturday: 9a - 6p
- ✓ Sunday: 10a - 6p
- ✓ Special events
- ✓ 50% increase operating hours
- ✓ Ramp staffing in peaks



Contract Background

➤ Blended Staff

- ✓ Consultant
- ✓ City

➤ Related Services

- ✓ Establish performance metrics
- ✓ Develop standard operating procedures
- ✓ Enhance software to enhance management
 - Performance metric reporting
 - Automated alerts
 - Incident status board and more



Contract Background

Benefits

➤ To Public

- ✓ Delay savings
- ✓ Emission reductions
- ✓ Fuel consumption savings
- ✓ Improved travel time reliability
- ✓ Safety benefits

➤ Benefit/Cost (varies)

- ✓ Houston 3:1 to 15:1
- ✓ Palm Beach County 10:1
- ✓ Florida DOT 10:1



Why Contract

Consultant staff are co-located with City of Austin staff, thereby providing a cohesive team with a unified mission.

- Expedite Activating TMC
- Specialized Skill Sets
- Knowledge Transfer
- Flexible Staffing for Future – One System



Others Who Contract TMC Operations

Examples of Agencies Utilizing a Consultant for Management and Staffing of their TMC:

- Detroit, MI
- Montgomery, AL
- Salt Lake City, UT
- Santa Monica, CA
- Alabama DOT
- Florida DOT
- New Mexico DOT
- New York State DOT
- Pennsylvania DOT
- Wisconsin DOT



Thank You

Helping Keep
Austin Moving!



Austin Transportation Department – TMC Operations Expansion Contract



Council Question and Answer

Related To	Item #24	Meeting Date	January 28, 2016
Additional Answer Information			

QUESTION: 1) What does the \$175,000 get? What programming is expected to take place between now and Jan 31, 2017? What are the goals and measures of success for those programs? Is there an estimated ongoing cost for this program? 2) How many of the 20 people trained will be hired? 3) Are these part time positions or full time? 4) What are the goals of the Advocacy and service navigation? 5) What and how much technology is being procured? 6) Who is the "major technology company" donating \$75,000? COUNCIL MEMBER ZIMMERMAN'S OFFICE

ANSWER:

1) This project carries over from the 1st phase of research, a population health assessment conducted in the Rundberg area, consisting of an analysis of patient data and field research. The results of this assessment found that, though there is need for more specialist care, in general, the main issues facing this area is that there are barriers, physical (sidewalks, transit), linguistic, etc., and that to overcome these barriers cited they intend to carry out the following 3 main activities:

- a) Jobs/Economic Development (Community Health Workers): This includes the training and hiring of Community Health Workers; residents who understand the needs of their community, trained to help others navigate the healthcare system.
- b) Continued Research and Engagement (Community Health Improvement Plan): This includes the 2nd phase of the health planning process in Rundberg, termed in the public health field as a process named the Community Health Improvement Plan (CHIP), a stated deliverable. The CHIP process includes stakeholders and residents in the effort of creating a plan to overcome the barriers and issues identified in the Community Health Assessment (CHA) that was completed last year. This activity also reflects the efforts to engage, educate and inform residents in the community.
- c) Rundberg Resource Directory (Use of Technology): Research has found that lower-income and older Americans have trouble accessing technology at a time when more and more services are going online.

To sustain services provided by the CHW, ongoing funding would be required and the level of funding needed will be evaluated after implementation of the CHWs into the Rundberg area.

2) Through this funding, the LATINO HEALTHCARE FORUM anticipates hiring at least 6 Community Health Workers (CHWs). Community Health Workers are trusted, knowledgeable frontline health personnel who typically come from the communities they serve. CHWs bridge cultural and linguistic barriers, expand access to coverage and care, and improve health outcomes. Hiring criteria will have preferences for Rundberg residents who can speak priority languages cited in the Community Health Assessment completed last year. Individuals that become certified as CHWs will be assisted by the LATINO HEALTHCARE FORUM to become absorbed in settings (clinics, hospitals, etc.) so they can assist in population health.

3) They will range from full-time to part-time, depending on labor supply, funding and employee availability.

4) Advocacy in the context of this project pertains to training Community Health Workers to help others navigate the system, and advocate for their own health and that of their community. As such, these are the goals of service navigation:

- a) To train Community Health Workers.
- b) In training them, they learn about various health conditions, and how to navigate a system. For example, if an adult or child is diagnosed with cancer, they might need a patient advocate to assist them with the various services, appointments, and treatment related to their illness.
- c) Eventually the goal is for residents to manage their own health, through the assistance of the Community Health Workers, and if Community Health Workers are successful, they can learn to be a Community Health Worker Trainer, and help their respective communities through a train-the-trainer model.

5) Recognizing the density of services and residents and barriers, including languages, this basic application will serve as a resource directory of basic needs and services (that preferably recognizes the user's location), with a few major languages, and for those with limited literacy skills, preferably a functionality that allows people to speak into the phone, writing out that speech, and being able to do the reverse: taking speech and speaking it aloud to the user.

With regards to "how much technology", this application will be developed for mobile technology purposes, as well as for a central location for those without access to their own technology, like a kiosk. To achieve this, LATINO HEALTHCARE FORUM will be paying to build the application, as well as the hardware for a central kiosk directory.

6) IBM, which is located in the study area, is supporting the LATINO HEALTHCARE FORUM technology efforts and has donated in-kind to our technology competition ("hackathon") that was created to include and benefit the Rundberg community.



Council Question and Answer

Related To	Item #29	Meeting Date	January 28, 2016
Additional Answer Information			

QUESTION: 1) How long have the libraries been procuring these resources? 2) What was the annual cost for each of them in the last contract? 3) How many years was the previous contract? 4) Does the library keep usage stats on any of these items (how many times they were checked out, how many people used them, etc.)? 5) If so, what were those stats for each of the previous 3 years? COUNCIL MEMBER ZIMMERMAN'S OFFICE

ANSWER:

1) The Austin Public Library has been contracting with ProQuest LLC since 2001. APL began contracting with Gale in 2001 then subsequently Cengage Learning in 2007 when they bought Gale.

2) Please see attachment.

3) One year. These resources are procured on an annual basis.

4) Yes. Usage of each resource is reviewed each year to determine if a renewal is in order. Subscriptions that do not meet the usage threshold of 1,000 circulations may not be renewed.

5) *Subscription Name* *2013* *2014* *2015*

Serials Solution 360	20,272	16,598	20,228
Ancestry Library Ed.	48,743	54,493	71,506
Books in Print	3,070	2,928	2,730
Historical Austin American Statesman*	N/A	N/A	20,829
Press Display	13,321	24,093	21,696
Factiva	1,810,411	1,456,659	721,237
Business Insights	5,936	3,042	3,628
Biography in Context	3,771	3,311	3,305
Dictionary of Literary Biography*	N/A	N/A	4,473
Gale Virtual Reference Library	6,208	6,856	7,476

Opposing viewpoints in Context	1,159	2,828	2,688
Gale Directory Library (exception to 1,000 threshold)†	336	458	626
Chilton Library	3,896	3,652	2,978
Texas Legal Forms	1,259	1,030	1,279

*The Historical Austin American Statesman and the Dictionary of Literary Biography are new resources procured in 2015.

† The **Gale Directory Library** contains the Gale Directory of Publications and Broadcast Media, the Encyclopedia of Associations: National Organizations of the U.S., Brands and Their Companies, American Wholesalers and Distributors Directory, National Directory of Nonprofit Organizations, and the Publishers Directory.

In order of RCA

Vendor		Name of Subscription
1	Proquest	Austin American Statesman
2	Proquest	Serials Solutions 360 Core and Search (eJournal Finder and Research)
3	Proquest	Ancestry Library Edition
4	Proquest	Books in Print
5	Proquest	Historical Austin American Statesman
6	Proquest	Press Display
7	Proquest	Factiva

Vendor		Name of Subscription
1	Cengage Learning	Business Insights: Essentials
2	Cengage Learning	Biography in Context
3	Cengage Learning	Dictionary of Literacy Biography
4	Cengage Learning	Gale Virtual Reference Library
5	Cengage Learning	Opposing Viewpoints in Context
6	Cengage Learning	Gale Directory Library
7	Cengage Learning	Chilton Library
8	Cengage Learning	Texas Legal Forms

Notes

Type	FY15	FY16
microfilm	\$ 4,063.50	\$ 4,368.00
database	\$ 9,740.00	\$ 10,265.00
database	\$ 5,450.00	\$ 5,635.00
database	\$ 13,385.00	\$ 13,825.00
database	\$ 8,913.00	\$ 9,215.00
database	\$ 14,790.00	\$ 15,395.00
database	\$ 35,945.00	\$ 37,460.00
	\$ 92,286.50	\$ 96,163.00

From
1/1/2016
10/1/2015
10/1/2015
12/1/2015
12/1/2015
12/1/2015
1/15/2016

Type	FY15	FY16
database	\$ 14,871.33	\$ 15,614.90
database	\$ 14,648.35	\$ 15,380.77
database	\$ 617.90	\$ 648.80
ebooks	See GDL	\$ 8,315.83
database	\$ 16,438.27	\$ 17,260.18
ebooks	\$ 22,117.35	\$ 14,146.00
database	\$ 3,539.76	\$ 3,716.75
database	\$ 10,801.36	\$ 11,341.43
	\$ 83,034.32	\$ 86,424.66

From
11/1/2015
3/1/2016
10/27/2015
Various dates
4/15/2016
Various dates
1/1/2016
12/28/2015

Total amount was previously merged with Gale Directory Libr

\$22,117.35 is a combined total for Gale Virtual Reference Lib

To	upcharge for renewals
12/31/2016	7%
9/30/2016	5%
9/30/2016	3%
11/30/2016	3%
11/30/2016	3%
11/30/2016	4%
12/15/2016	4%



To	5% upcharge for renewals
10/31/2016	5%
2/28/2017	5%
10/26/2016	5%
	5%
4/14/2017	5%
	5%
12/31/2016	5%
12/27/2016	5%



Council Question and Answer

Related To	Item #42	Meeting Date	January 28, 2016
Additional Answer Information			

QUESTION: 1) Please provide more details regarding what a "dynamic parking system" is. 2) What are the ongoing costs associated with this? What is the estimated life of the technology and equipment? 3) How many parking facilities will be in this system? 4) Will it include just parking garages or street parking as well? Is there a map showing all the locations? COUNCIL MEMBER ZIMMERMAN'S OFFICE

ANSWER:

- 1) Dynamic Parking System refers to data collection and directional signs that work together to "count" cars that are in the participating parking garages, and determine if there are parking spaces available in those garages. There will be wayfinding signs that are connected to the data system in such a way that they will direct the public to the location of parking garages that have parking spaces available, and tell the public how many spaces are available in that garage. The dynamic aspect is that the directional signs have electronic lettering that will change to reflect the latest information regarding the number and location of spaces.
- 2) It is a data collection system connected wirelessly to servers that then communicate to electronically lighted signs that are pole mounted in the street right-of-way and mounted on the parking garages. No new personnel will be assigned to manage this system, it will be managed by traffic signal personnel in the central Austin signal office on Toomey Road. Agreements are in place with the parking garage owner's to share cost of managing the system.
- 3) The equipment has a one year warranty from completion of installation. In discussion with the manufacturer/installer, the sensors will last more than ten years. The LED's in the signs are expected to last 100,000 hours, but have an expected replacement life of five years. The computer equipment is a Dell server, which has a service life of at least five years. The radio transmitters and receivers for the wireless system may need replacement in five years, but many last much longer.
- 4) This first stage of development will include three parking garages: The Seaholm garage, the new Central Library, and City Hall.
- 5) Currently it will only include the parking garages mentioned above.
- 6) Attached.

A. COORDINATE WORK WITH AUSTIN ENERGY FOR CONNECTION TO STREET LIGHTING

1. ELECTRONIC PARKING DIRECTION POLE SHALL BE INSTALLED BY ELECTRICAL CONTRACTOR, SEE DETAIL 2/E300
ELECTRICAL CONTRACTOR SHALL PROVIDE 120V/1Ø FROM NEAREST AUSTIN ENERGY STREET LIGHTING PULLBOX FOR CONNECTION.
2. EXISTING STREET LIGHTING PULL BOX.
3. 2" UNDERGROUND CONDUIT.
4. 11"x17" HANDHOLE WITH TRAFFIC GRADE COVER, SEE DETAIL 3/E300
5. 1" UNDERGROUND CONDUIT FROM HANDHOLE TO PARKING DIRECTION POLE.

RELEASED UNDER THE AUTHORITY OF:
SHARON S. BICKFORD, P.E.
TEXAS REGISTRATION No: 77390
DATE: 07/31/2015

(NOT INTENDED FOR BIDDING, PERMIT, OR
CONSTRUCTION PURPOSES)

COA DYNAMIC PARKING SYSTEM

Austin, Texas

[illegible]

P.M.: S.S.B.	DRAWN BY: S.T.N
--------------	-----------------

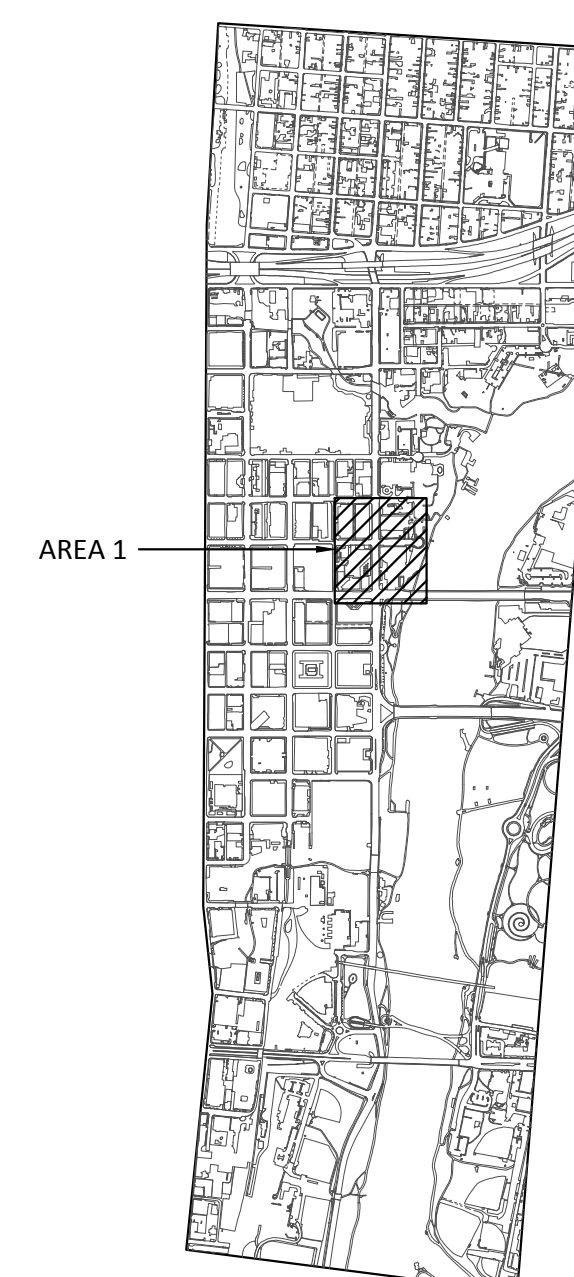
QA/QC BY: S.S.B.	DATE: 07/31/2015
------------------	------------------

SHEET TITLE:

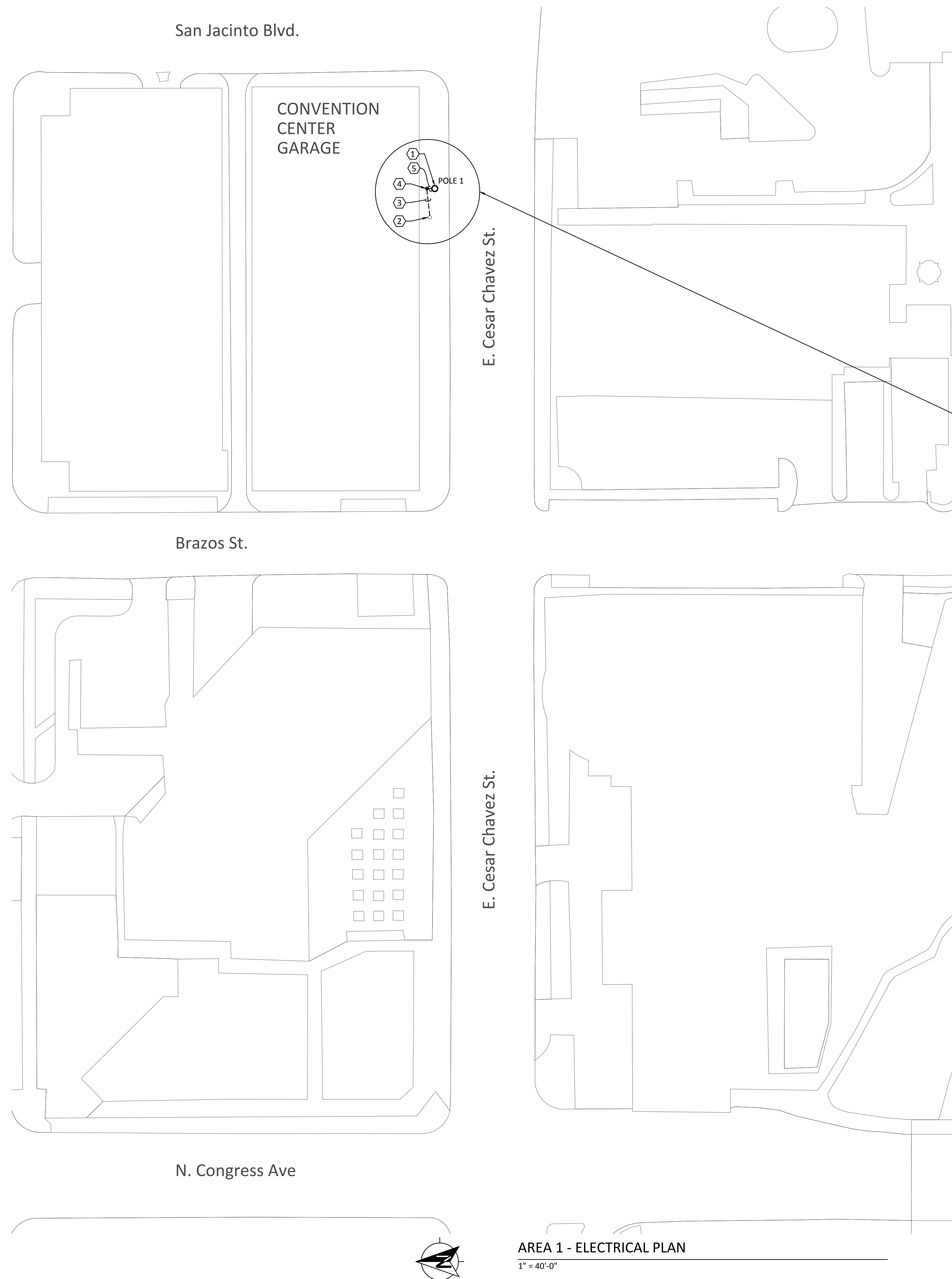
AREA 1 - ELECTRICAL PLAN

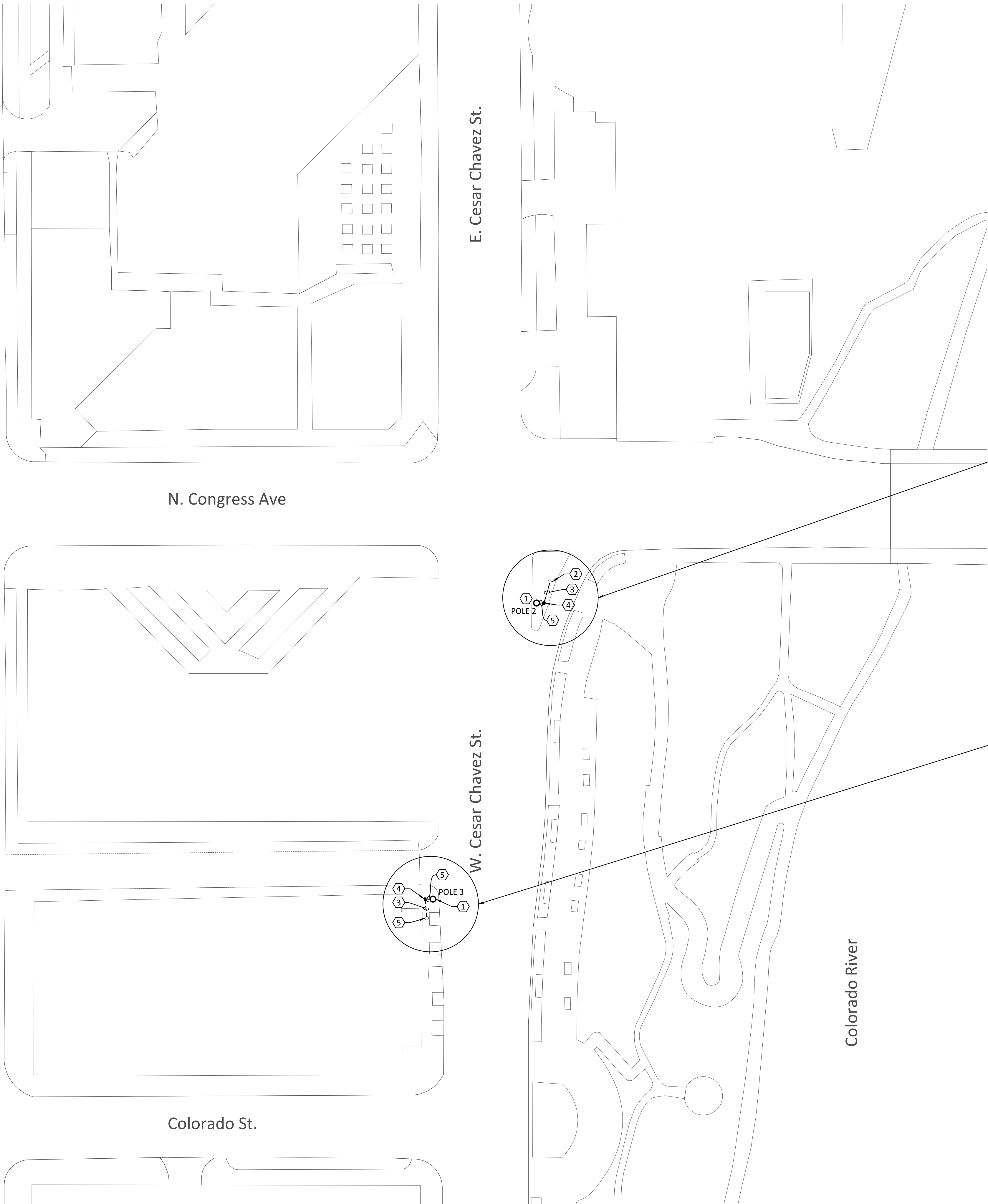
SHEET NUMBER:

E101



KEY PLAN

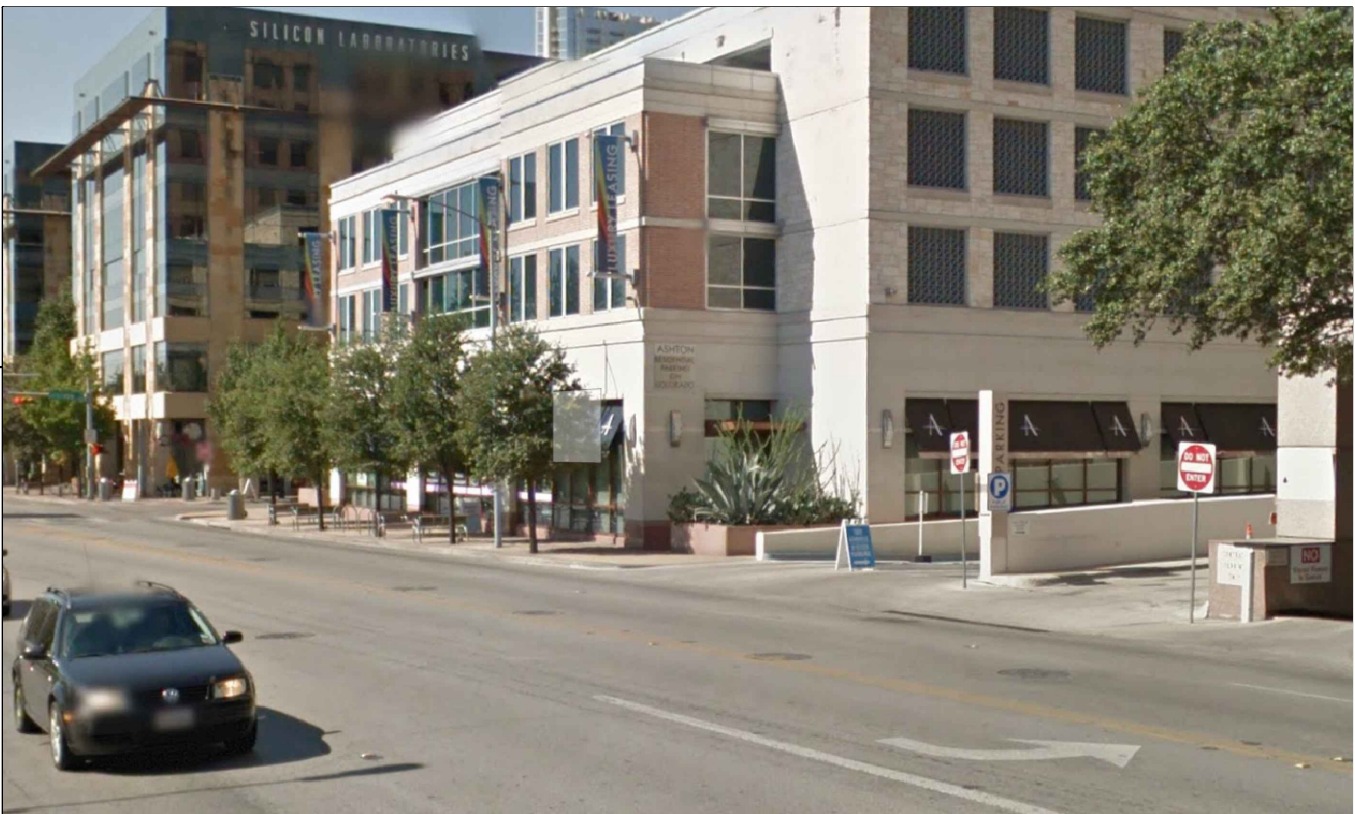




AREA 2 - ELECTRICAL PLAN
1" = 40'-0"



TRAFFIC INTERSECTION



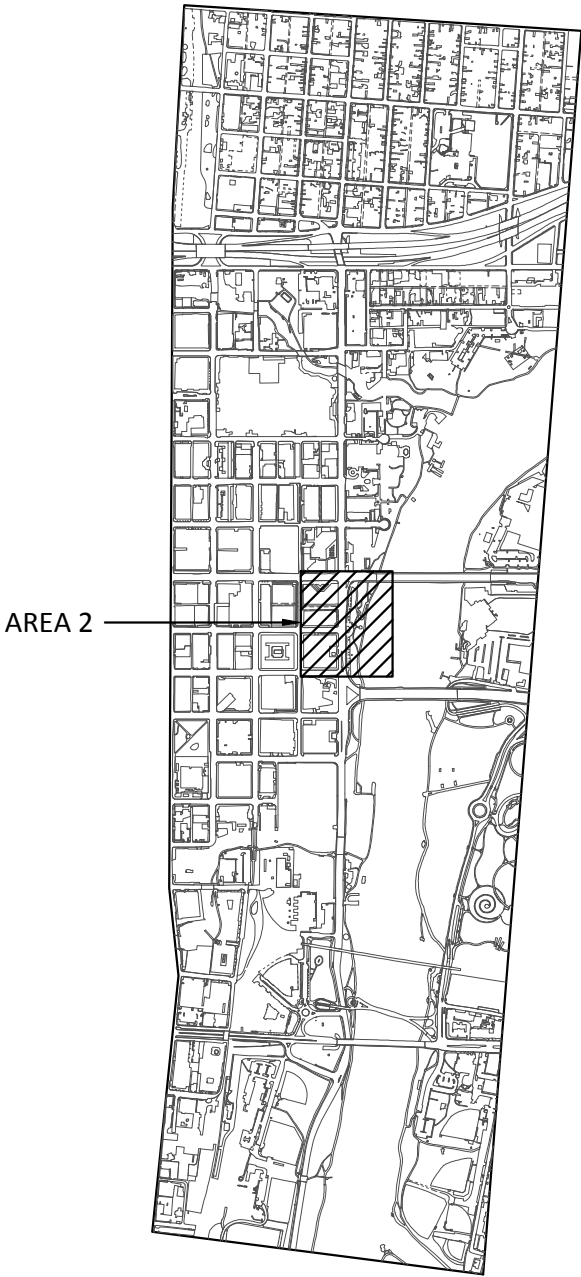
CESAR CHAVEZ ST., NORTH SIDE

GENERAL NOTES

- A. COORDINATE WORK WITH AUSTIN ENERGY FOR CONNECTION TO STREET LIGHTING

KEY NOTES

1. ELECTRONIC PARKING DIRECTION POLE SHALL BE INSTALLED BY ELECTRICAL CONTRACTOR, SEE DETAIL 2/E300
ELECTRICAL CONTRACTOR SHALL PROVIDE 120V/1Ø FROM NEAREST AUSTIN ENERGY STREET LIGHTING PULLBOX FOR CONNECTION.
2. EXISTING STREET LIGHTING PULLBOX.
3. 2" UNDERGROUND CONDUIT.
4. 11"x17" HANDHOLE WITH TRAFFIC GRADE COVER, SEE DETAIL 3/E300
5. 1" UNDERGROUND CONDUIT FROM HANDHOLE TO PARKING DIRECTION POLE.



KEY PLAN

ENCOTECH
ENGINEERING CONSULTANTS

TBPE Firm 1141 | 8500 Bluffstone Cove, Suite B-103
Austin, Texas 78759 | 512.338.1101
Project No.: 14081.MS.AUS

PROGRESS PRINT

RELEASED UNDER THE AUTHORITY OF:
SHARON S. BICKFORD, P.E.
TEXAS REGISTRATION NO. 77590
DATE: 07/31/2015
(NOT INTENDED FOR BIDDING, PERMIT, OR
CONSTRUCTION PURPOSES)

COA DYNAMIC PARKING SYSTEM
Austin, Texas

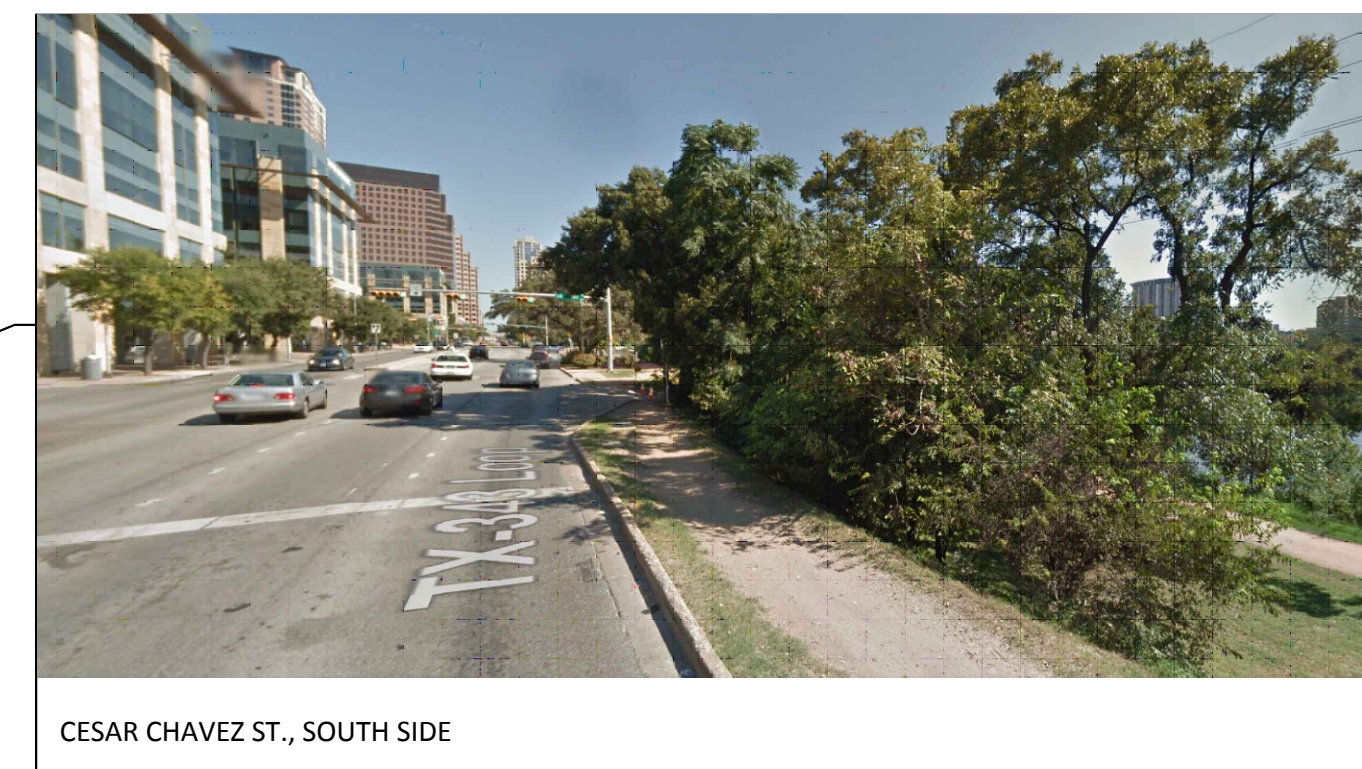
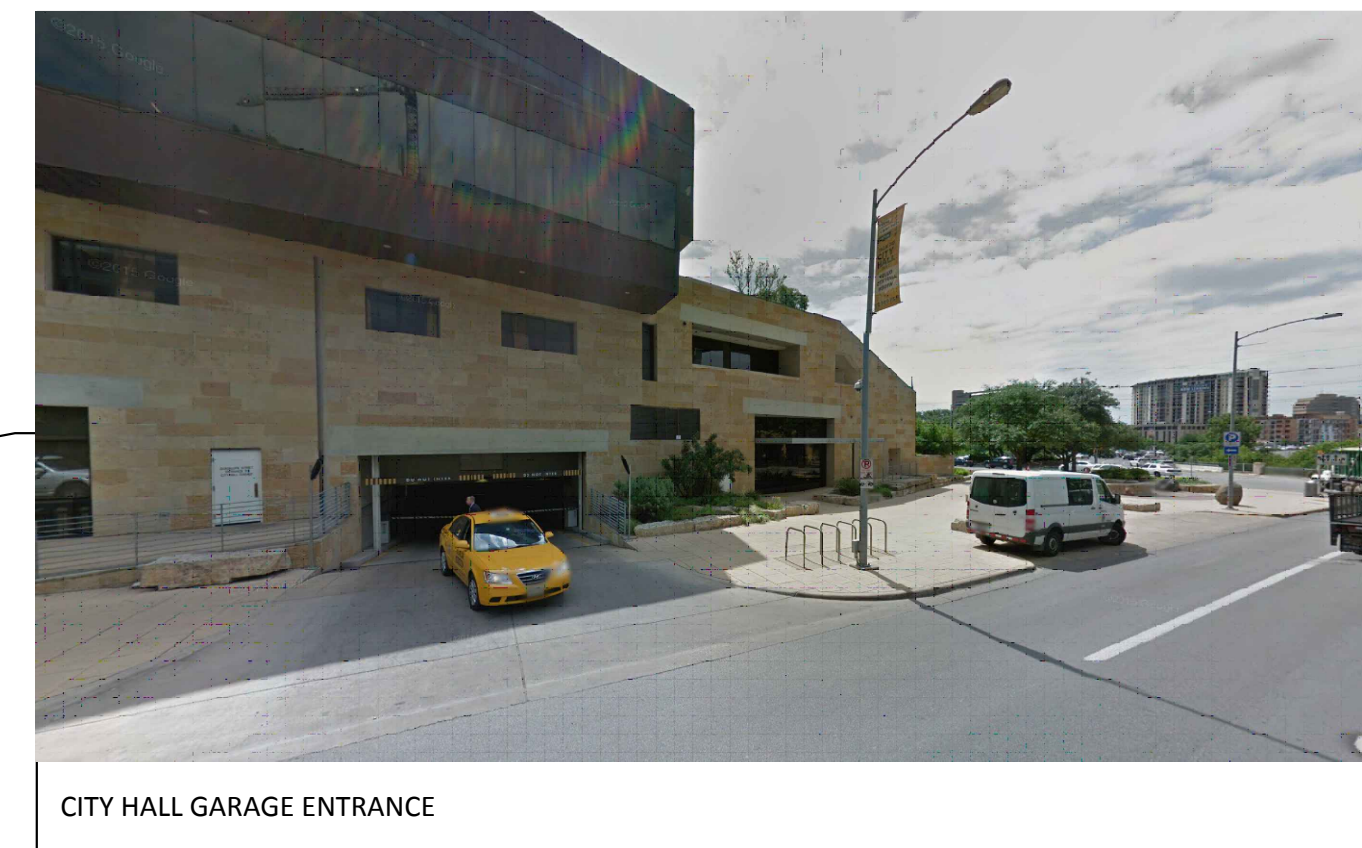
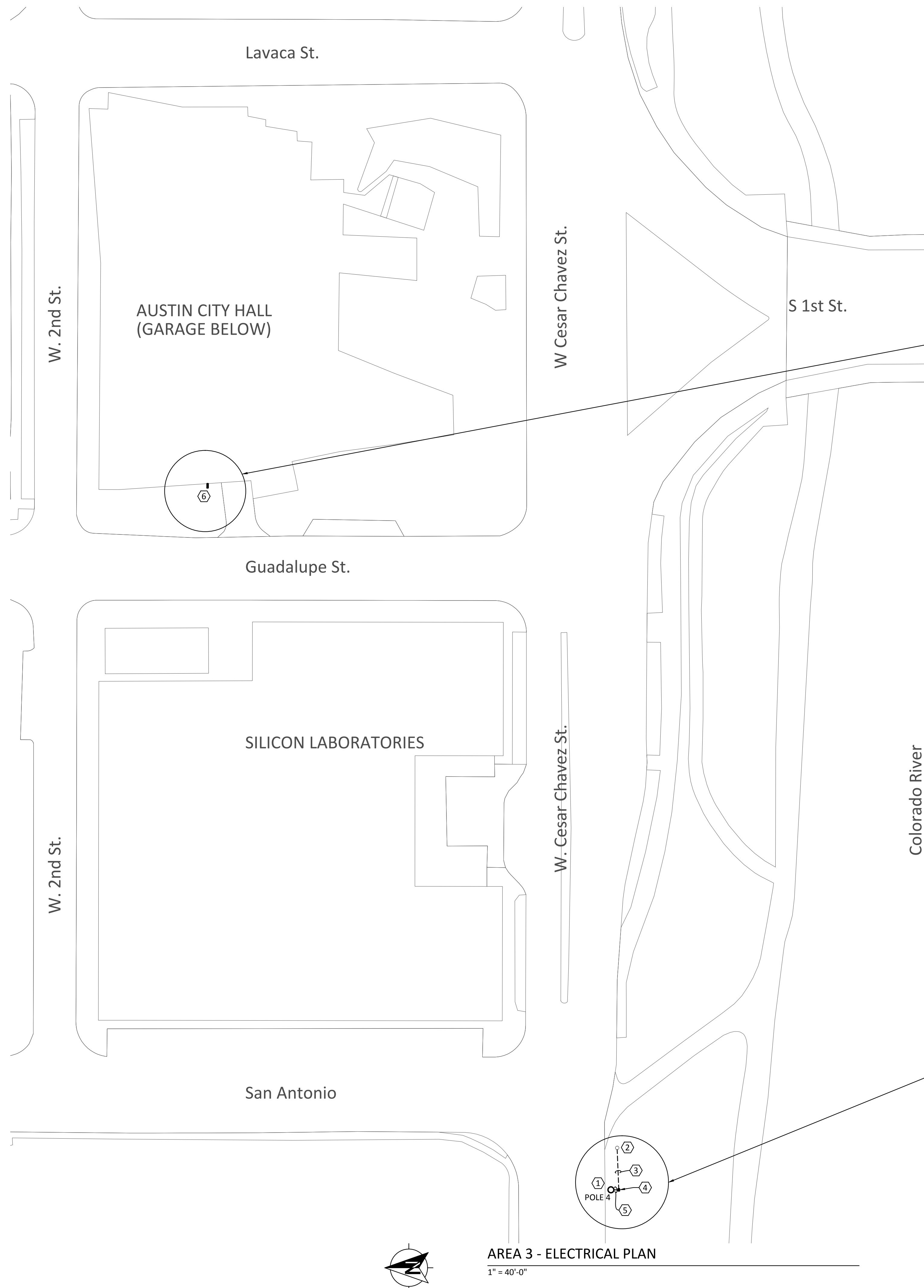
No.	ISSUE	DATE
1	PROGRESS SET	07/31/15

PROJECT No: 14081.MS.AUS
P.M.: S.S.B. DRAWN BY: S.T.N.
QA/QC BY: S.S.B. DATE: 07/31/2015

SHEET TITLE:
AREA 2 - ELECTRICAL PLAN

SHEET NUMBER:

E102

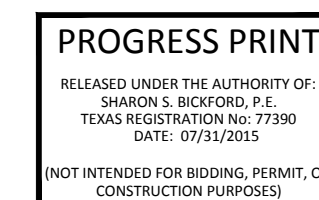


GENERAL NOTES

- A. COORDINATE WORK WITH AUSTIN ENERGY FOR CONNECTION TO STREET LIGHTING

KEY NOTES

1. ELECTRONIC PARKING DIRECTION POLE SHALL BE INSTALLED BY ELECTRICAL CONTRACTOR, SEE DETAIL 2/E300
ELECTRICAL CONTRACTOR SHALL PROVIDE 120V/1Ø FROM NEAREST AUSTIN ENERGY STREET LIGHTING PULLBOX FOR CONNECTION.
2. EXISTING STREET LIGHTING PULL BOX.
3. 2" UNDERGROUND CONDUIT.
4. 11"x17" HANDHOLE WITH TRAFFIC GRADE COVER, SEE DETAIL 3/E300
5. 1" UNDERGROUND CONDUIT FROM HANDHOLE TO PARKING DIRECTION POLE.
6. WALL MOUNTED FACILITY SIGN SHALL BE INSTALLED BY ELECTRICAL CONTRACTOR. SEE SHEET E201 FOR FURTHER INFORMATION.
PROVIDE 120V POWER FROM NEAREST AVAILABLE 20A SPARE CIRCUIT BREAKER.



COA DYNAMIC PARKING SYSTEM

Austin, Texas

[illegible]

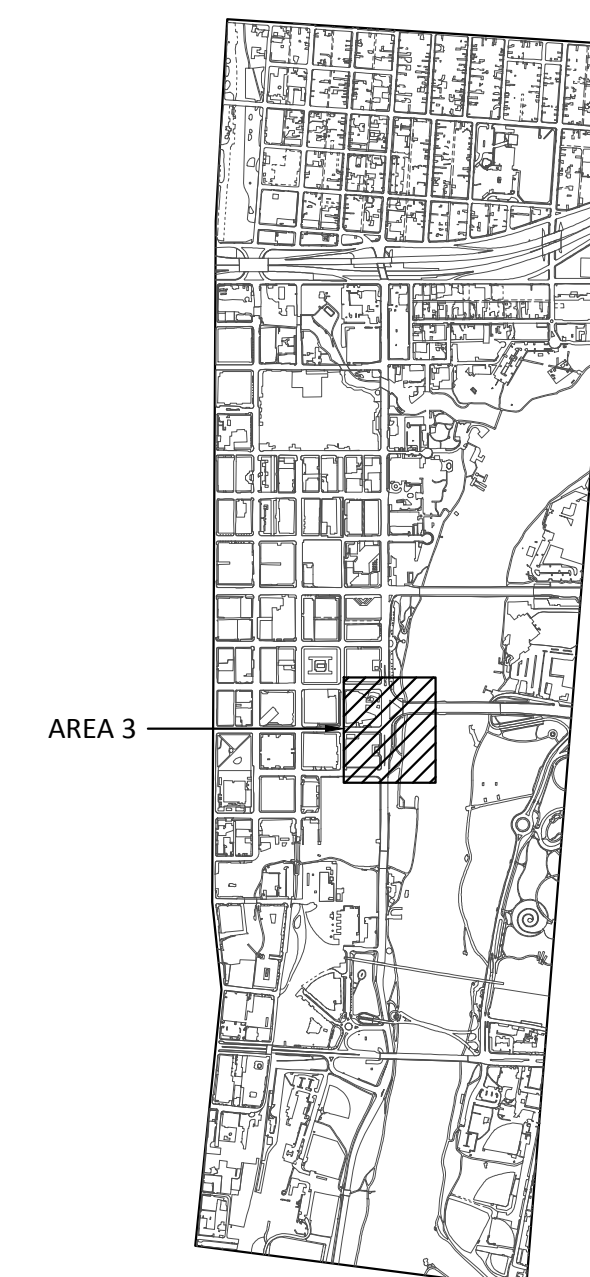
PROJECT No: 14081.MS.AUS	
P.M.: S.S.B.	DRAWN BY: S.T.N
QA/QC BY: S.S.B.	DATE: 07/31/2015

SHEET TITLE:

AREA 3 - ELECTRICAL PLAN

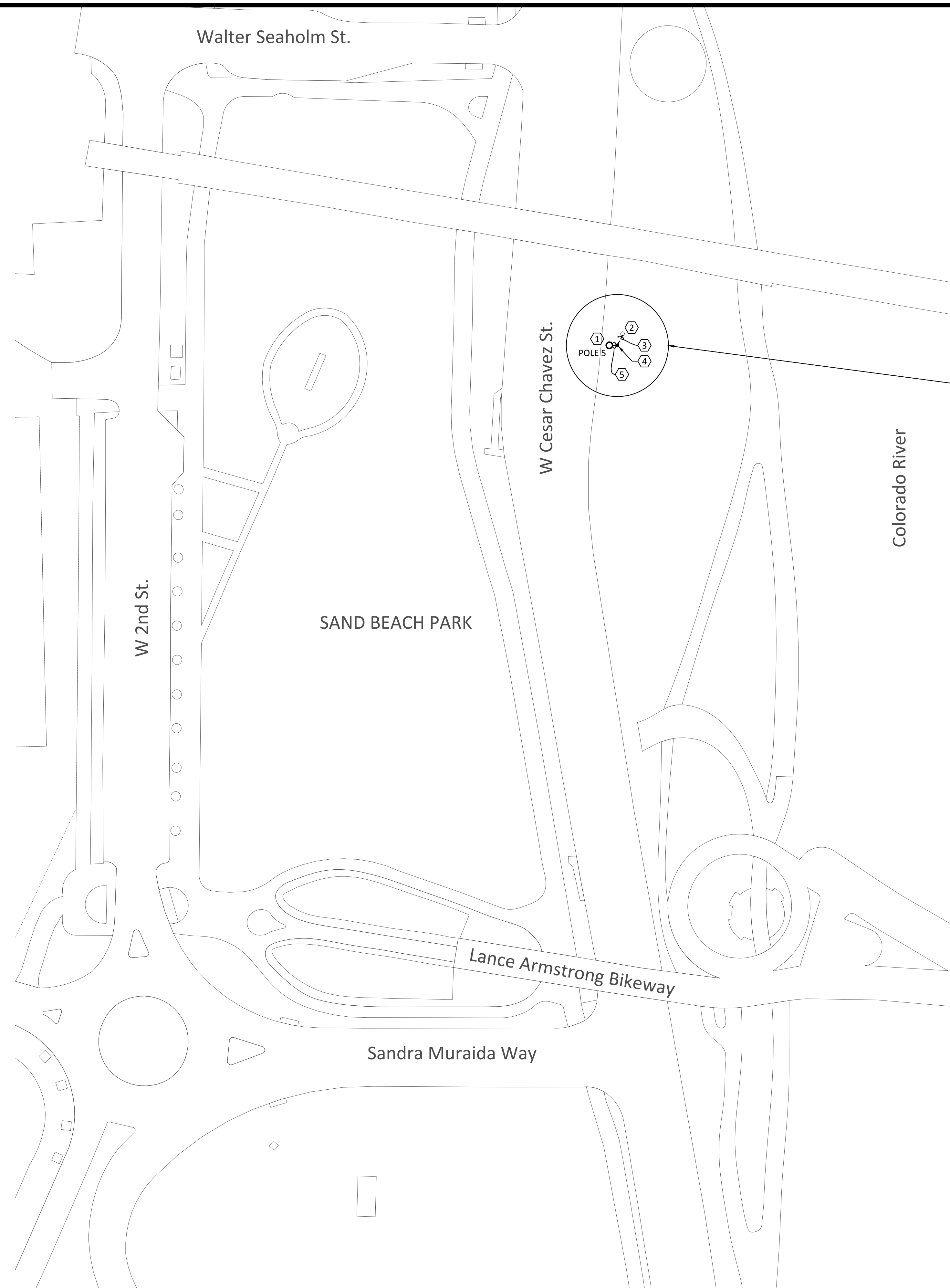
SHEET NUMBER:

E103



KEY PLAN





GENERAL NOTES



PROGRESS PRINT

COA DYNAMIC PARKING SYSTEM

Austin, Texas

[illegible]

PROJECT No: 14081.MS.AUS

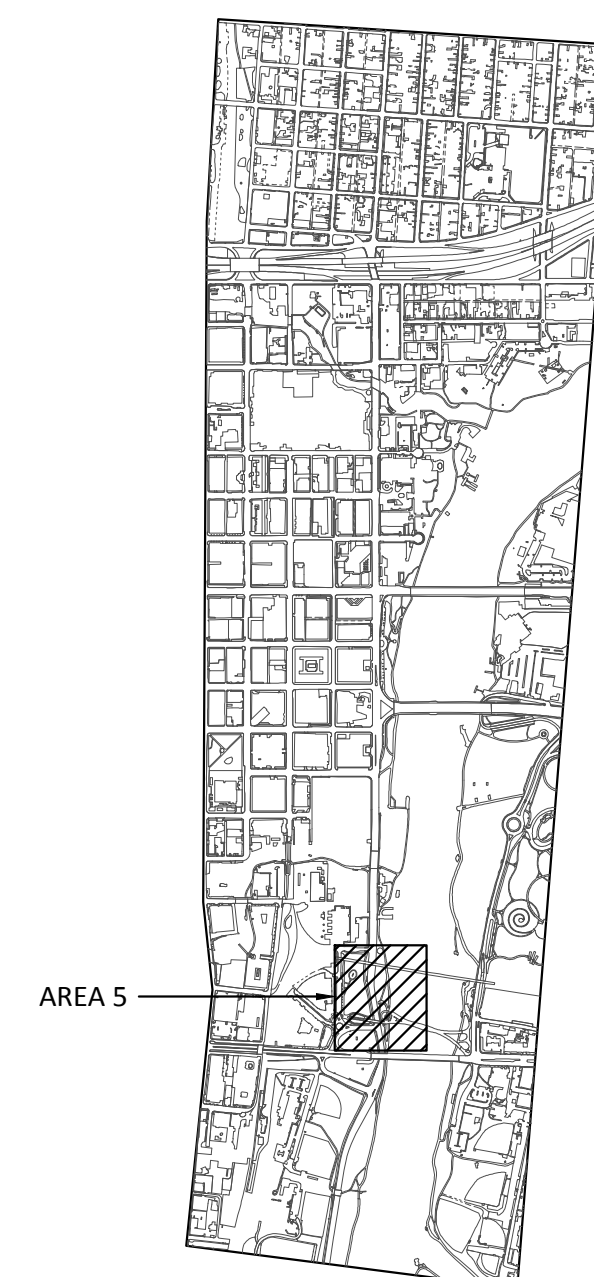
P.M.: S.S.B.	DRAWN BY: S.T.N.
--------------	------------------

SHEET TITLE:

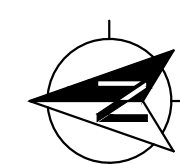
AREA 5 - ELECTRICAL PLAN

SHEET NUMBER:

E105



KEY PLAN





Council Question and Answer

Related To	Item #63	Meeting Date	January 28, 2016
Additional Answer Information			

QUESTION: 1) Have there been requests for Ch 245 determinations (grandfathering) for properties located within the area where this property is located? 2) If the City were to sell this tract, what measures could the City take to ensure that any future development complies with current code? MAYOR PRO TEM TOVO'S OFFICE

ANSWER:

1) Since March 2013, the following cases in the Missouri-Pacific Industrial Park subdivision have been grandfathered to the 1969 plat regulations:

- 4905 Winnebago
- 3933 Promontory Point
- 3928 Promontory Point
- 3800 Promontory Point
- 3905 Caven Rd
- 4023 and 4045 Promontory Point (these two addresses are for the same series of lots 9-11)
- 3905 Promontory Point

2) The Law Department will be providing a separate response.



Council Question and Answer

Related To	Item #86	Meeting Date	January 28, 2016
Additional Answer Information			

QUESTION: How does this revision to Parkland Dedication affect the development of single family-zoned lots?
COUNCIL MEMBER HOUSTON'S OFFICE

ANSWER:

The ordinance continues to apply to single family zoned lots that apply for a subdivision or a site plan. It also continues to exempt all certified affordable units from the fee. The current fee is \$650 per unit. The proposed parkland fee will increase for both single family and multi-family lots. The fee structure will change to a 3-tiered system: High Density projects (>12 units per acre) will pay \$943 per unit; Medium Density projects (6 to 12 units per acre) will pay \$1,220 per acre; Low Density projects (< 6 units per acre) will pay \$1,551 per unit. The fees are based on the average number of people living in a unit. On average, more people live in a single-family unit than a multi-family unit that is why the fees get higher for single family units.

There were some questions regarding the cost benefit of the new parkland ordinance at today's worksession. Parkland dedication is a fiscally conservative action. A bedrock principle of fiscal conservation is the Benefit Principle, which states that those who benefit from government services should pay for them.

Elected officials can respond to infrastructure and amenity needs created by new growth in one of three ways:

1. Request existing residents to pay the bills by approving the issuance of general obligation bonds, which will raise their taxes
2. Decline to provide the new infrastructure and amenities or provide them at a lower level accepting a reduction in quality of life
3. Require new development to pay the cost of providing the infrastructure and amenities they need for which has been created by them

Current and proposed land and fee-in-lieu land collection:

- Currently, PARD collects \$3 million on average from fees in lieu of parkland dedication each year.
- Under the new ordinance, an estimated \$5 to \$6 million would be collected from fees in-lieu of parkland dedication each year (this depends on the type of development the City receives because the fee is different for multi-family and single-family)
- Currently, PARD acquires 40 acres on average through parkland dedication requirements each year
- Under the new Ordinance, an estimated average of 75 acres of new parkland may be received each year.

The City of Austin's bond cycle averages 7 years. With an average of \$3 million dollars collect per year, PARD collects on average \$21 million dollars each bond cycle. With the new Parkland Dedication Ordinance, PARD estimates \$5.5 million dollars collected per year, \$38.5 million dollars each bond cycle. The \$17.5 million increase over a 7 year bond cycle could decrease PARD's impact on the City of Austin's bond capacity and enable PARD to better keep pace with population growth.



Flood-related incidents – 4700-4900 Blk of Convict Hill Rd

Request:

The city of Austin's Flood Early Warning Systems (FEWS) group is requesting the number of times AFD has responded to flood-related incidents in the 4700-4900 Blk of Convict Hill Rd.

The primary question for analysis was:

- *What was the total number of AFD flood-related incidents to the 4700-4900 Blk of Convict Hill Rd, since 2012?*

Results: Since 2012, AFD has responded to 5 flood-related incidents in the 4700-4900 Blk of Convict Hill Rd.

AFD Inc Number	Year	Month	Day	Problem Call Type	Address
12064286	2012	Jul	15	FLOODB - Flood Barricade	Convict Hill Rd / Brush Country Rd
13095395	2013	Oct	13	FLOODA - Flood Assist	4601 Convict Hill Rd
14088997	2014	Sep	18	WRESQT - Water Rescue TF	4900 CONVICT HILL RD
14089065	2014	Sep	18	FLOODA - Flood Assist	4900 CONVICT HILL RD
15051935	2015	May	27	FLOODB - Flood Barricade	4701 - 4709 CONVICT HILL RD

*January 1, 2012 – January 12, 2016

Methodology

Data pulled using Qlikview. The data source is FDM RMS.

- Filters used to calculate the data:
 - FLOODA (Flood Assist) call type
 - FLOODB (Flood Barricade) call type
 - RESQT (Rescue Task Force) call type
 - WRESQT (Water Rescue Task Force) call type
 - RESQWS (Swift Water) call type
 - RAP 00-2705, 00-2701
 - CY 2012-2016 (January 12, 2016)

Call Type Definitions

- FLOOD A (Flood Assist) – General request for assistance due to rising water. Standard fire apparatus equipment can handle the problem. 1 Eng sent to incident.
- FLOOD B (Flood Barricade) – General request for assistance due to water rising, but life not in eminent danger. Standard fire apparatus equipment can handle the problem. 1 Brush Truck sent to incident
- WRESQT (Water Rescue TF) – Serious event, swiftly rising water with people in eminent danger. Specialized equipment needed to deal with rescue (ex: boat). 5 units sent (Eng, Ladder/Quint, Rescue, Battalion Chief, Safety Officer)