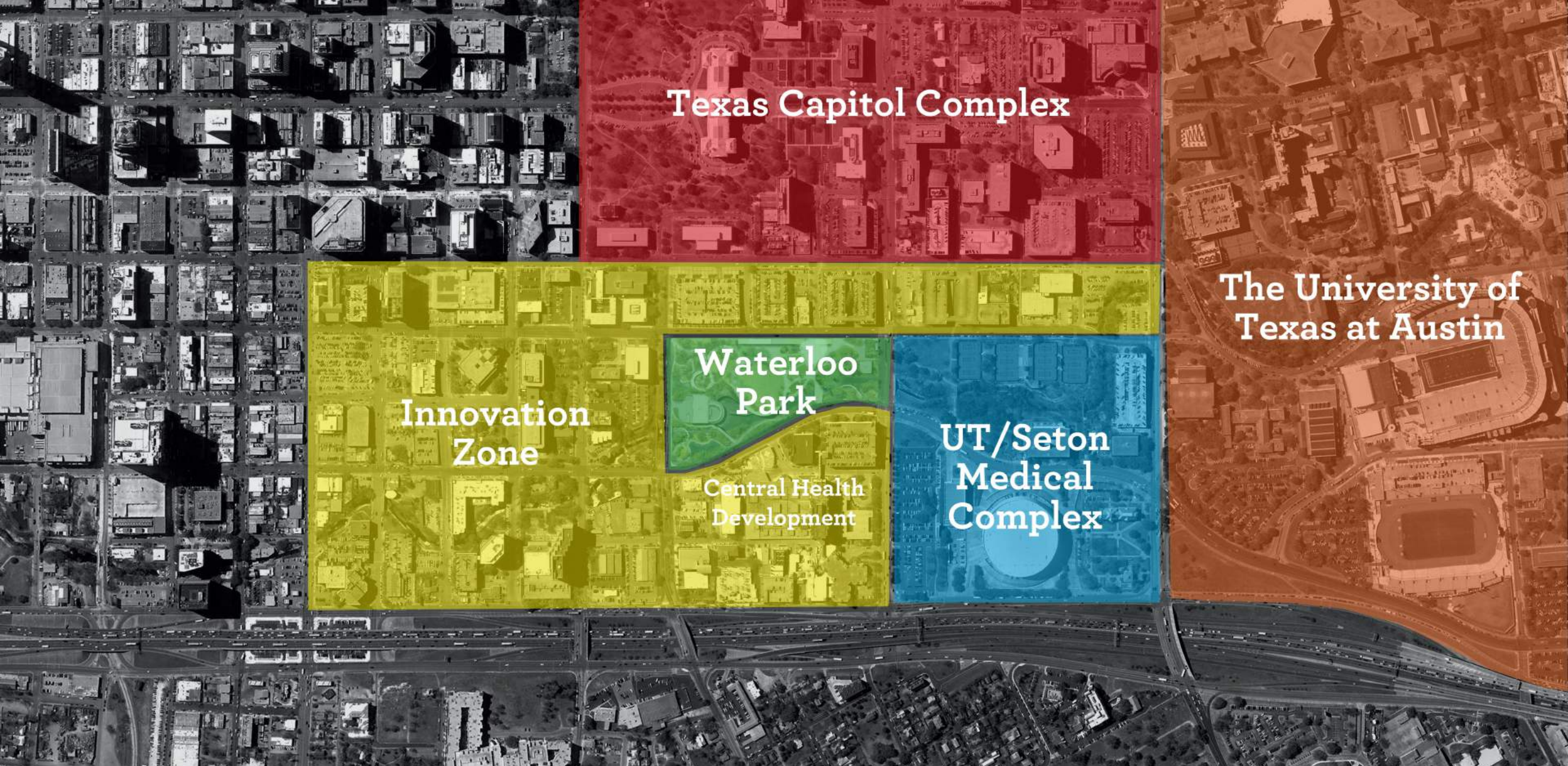




AN DESIGN UPDATE ON
WATERLOO PARK
WALLER CREEK LGC | March 9, 2016

WATERLOO PARK





Texas Capitol Complex

The University of
Texas at Austin

Innovation
Zone

Waterloo
Park

Central Health
Development

UT/Seton
Medical
Complex

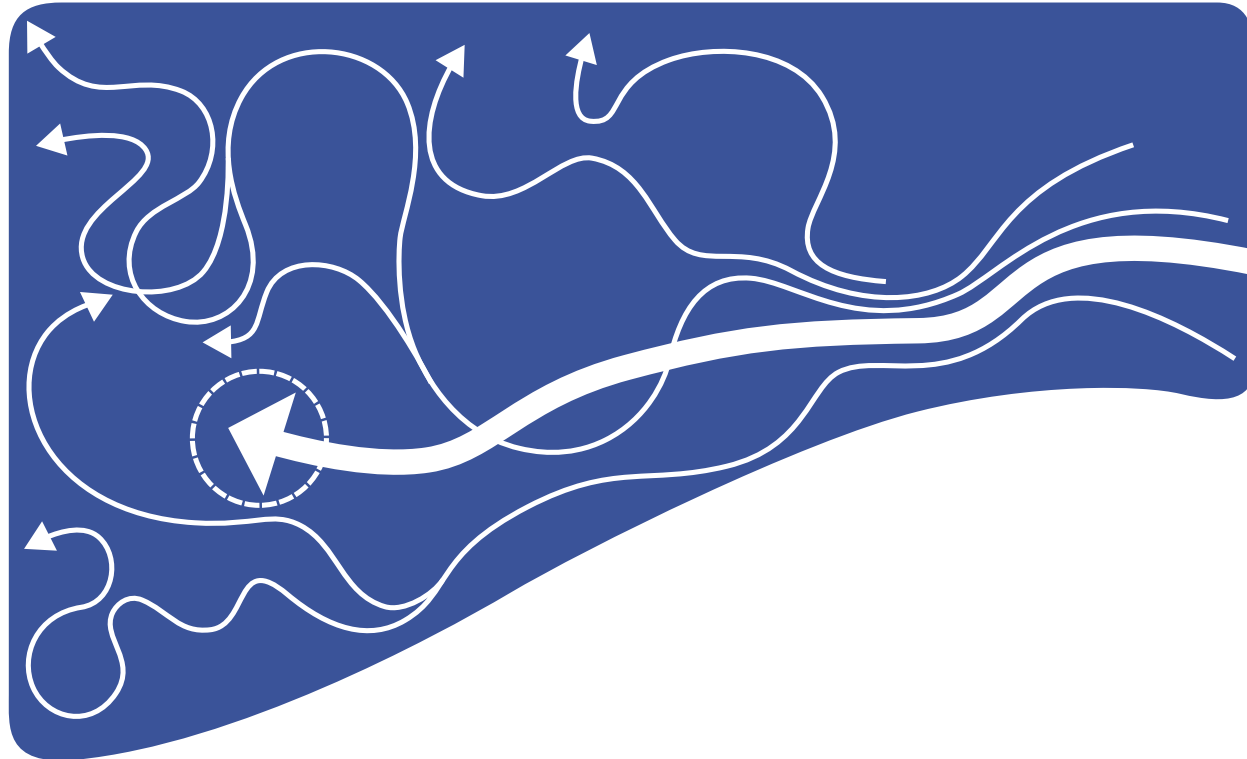
Controlling Flow



Flow Interrupted



Re-Shaping the Land: Post-Tunnel Fluidity



- Tunnel inlet interrupts flow
- Freezes the relationship of land and water (for extreme flooding)
- Tunnel construction requires reshaping the majority of the site
- “Fluid” lines solve many site issues: accessibility, servicing, trees

Waterloo Park





Waterloo Park

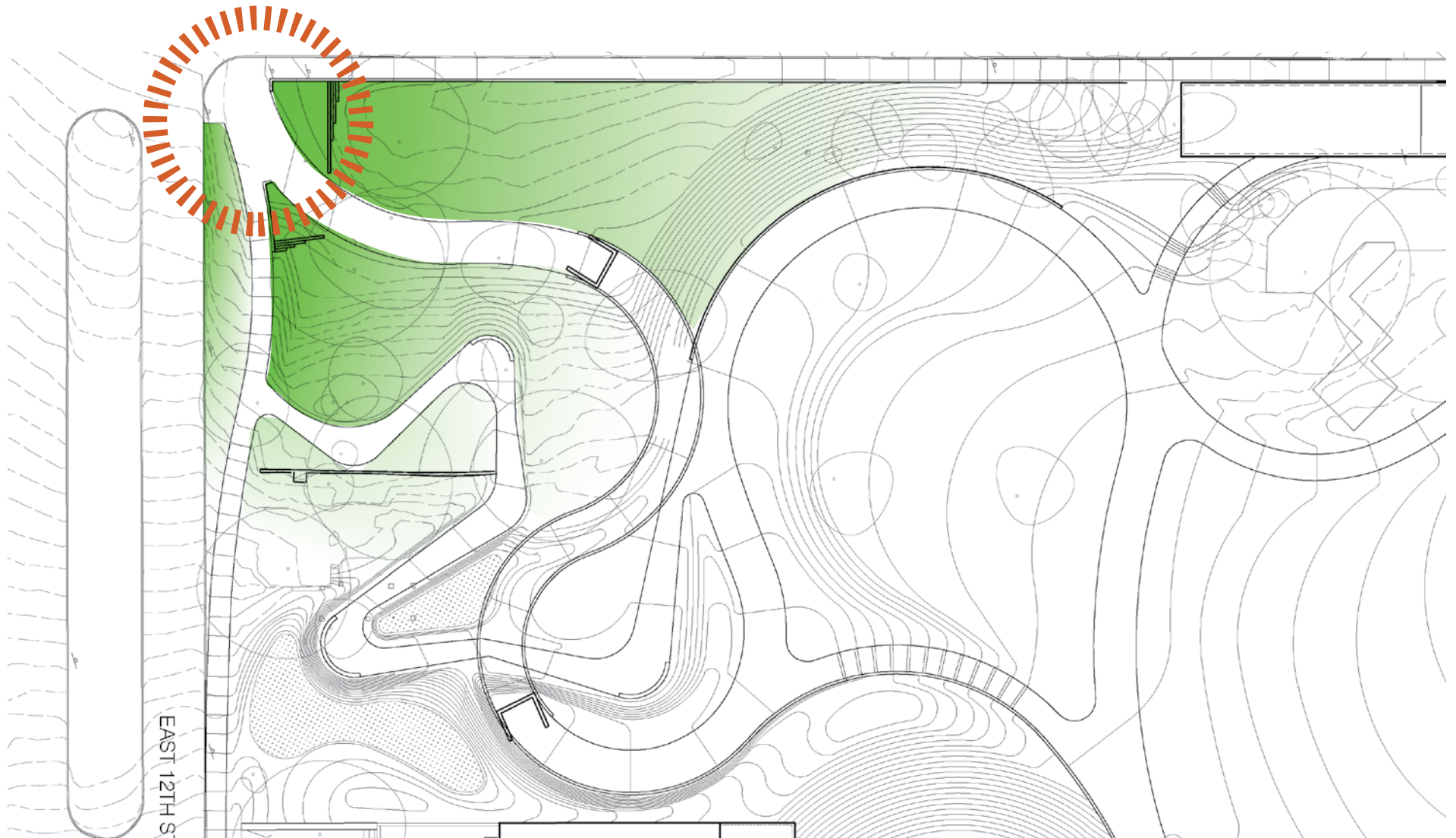


Garden Entries



Entry Garden

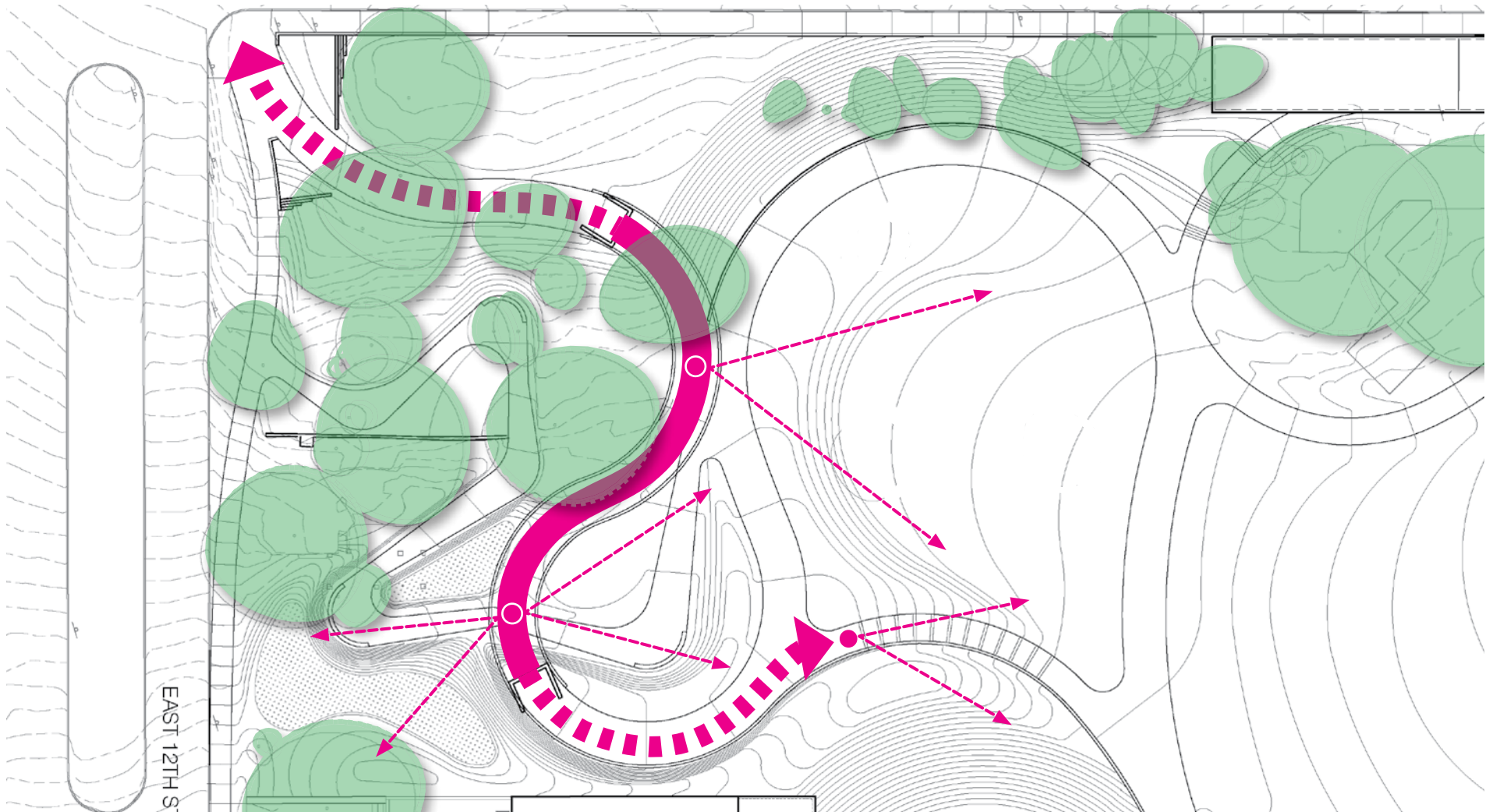
- Forms an entry gate using the language of the park landforms
- Sets up the conceal/ reveal sequence of entering the park
- A meeting place with seating and a sense of enclosure





Canopy Walk

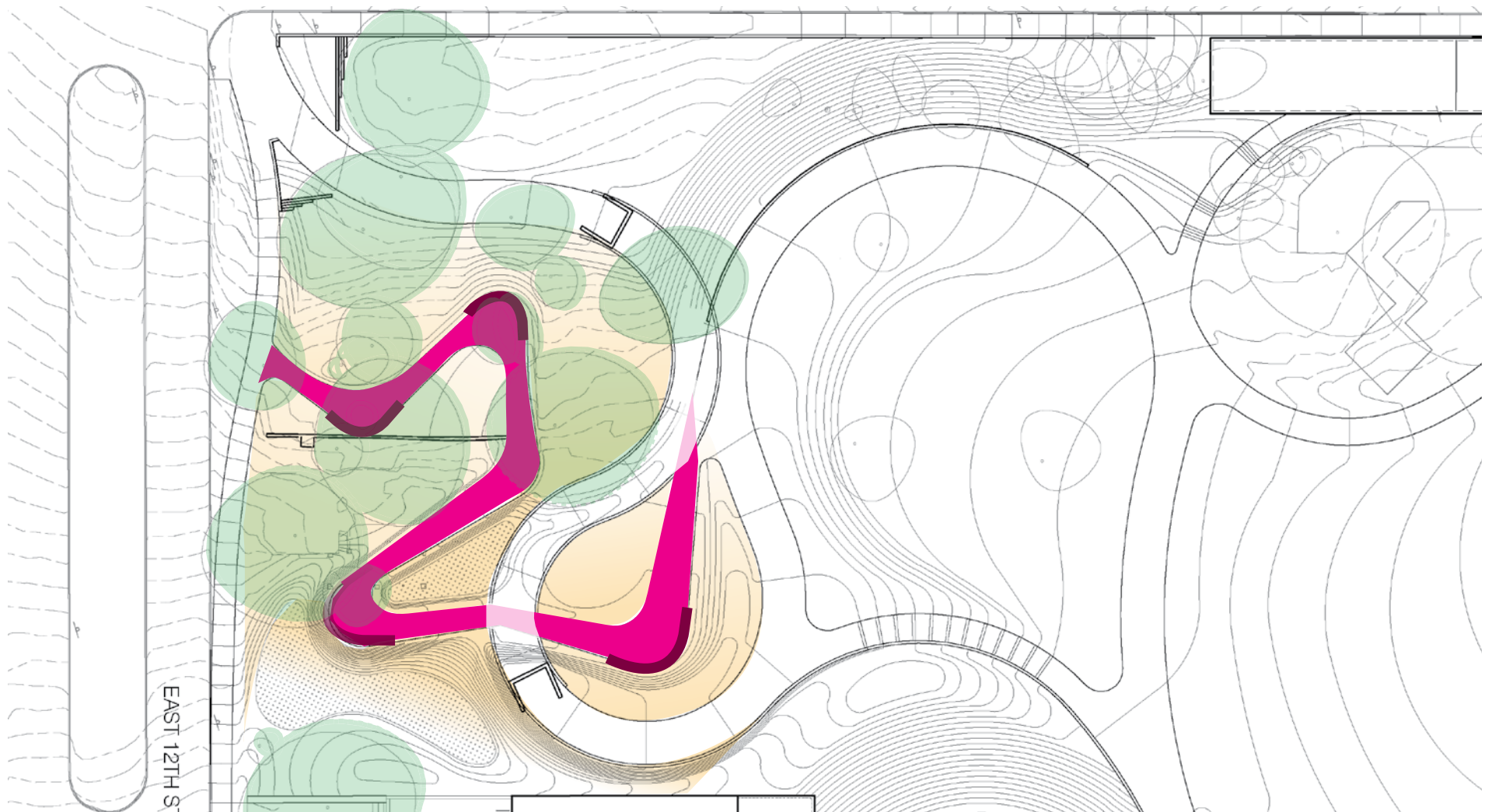
- Solves the key accessibility challenge of the site
- Preserves existing hillside live oak trees
- Walk highlights movement through tree canopies and cityscape





Hill Country Garden

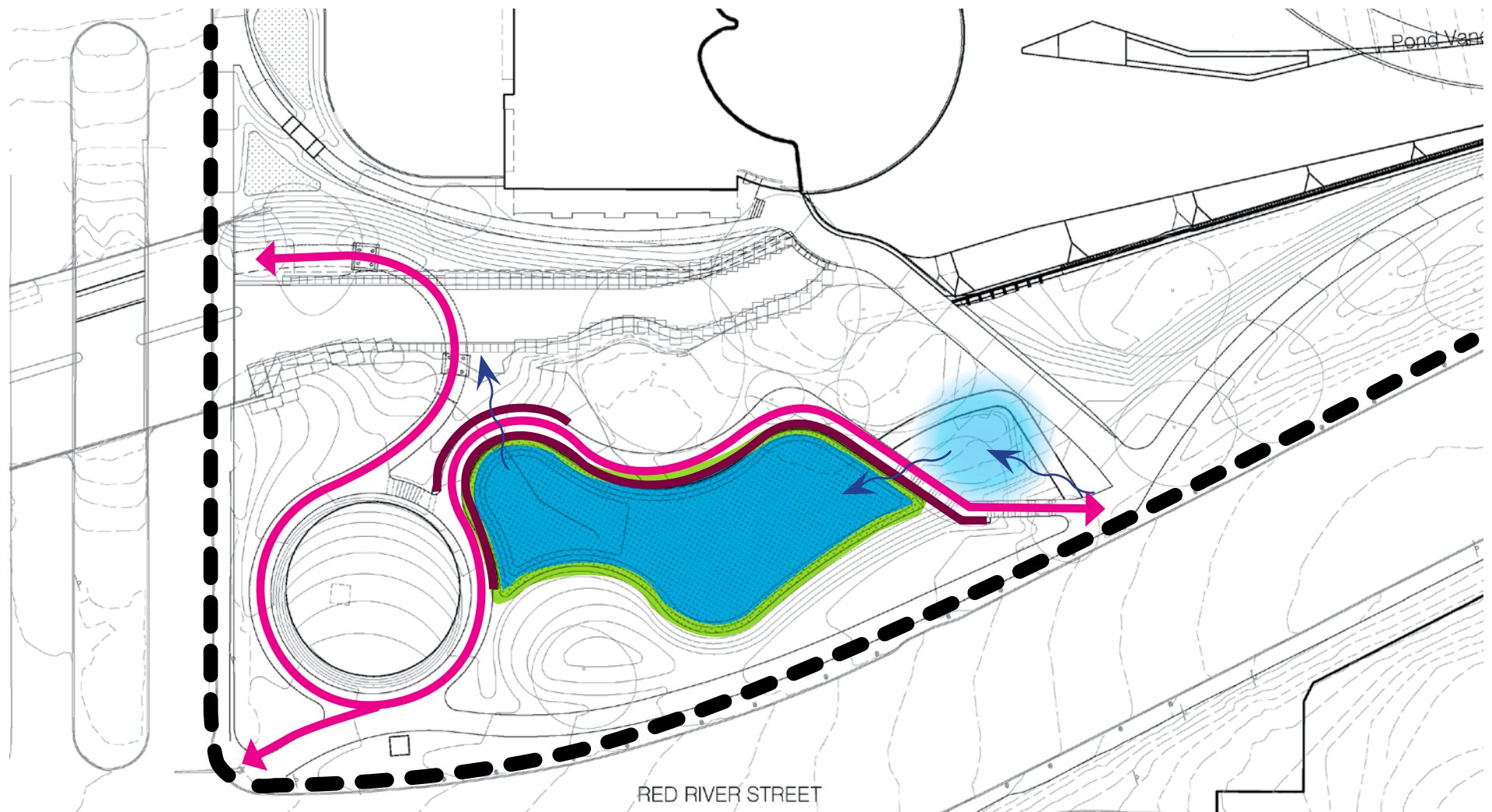
- Additional accessible walk carefully built around existing live oaks
- Accommodates shaded seating and spaces for exploration
- Ground plane planted with a rich tapestry of hill country plants





Wetland Terrace

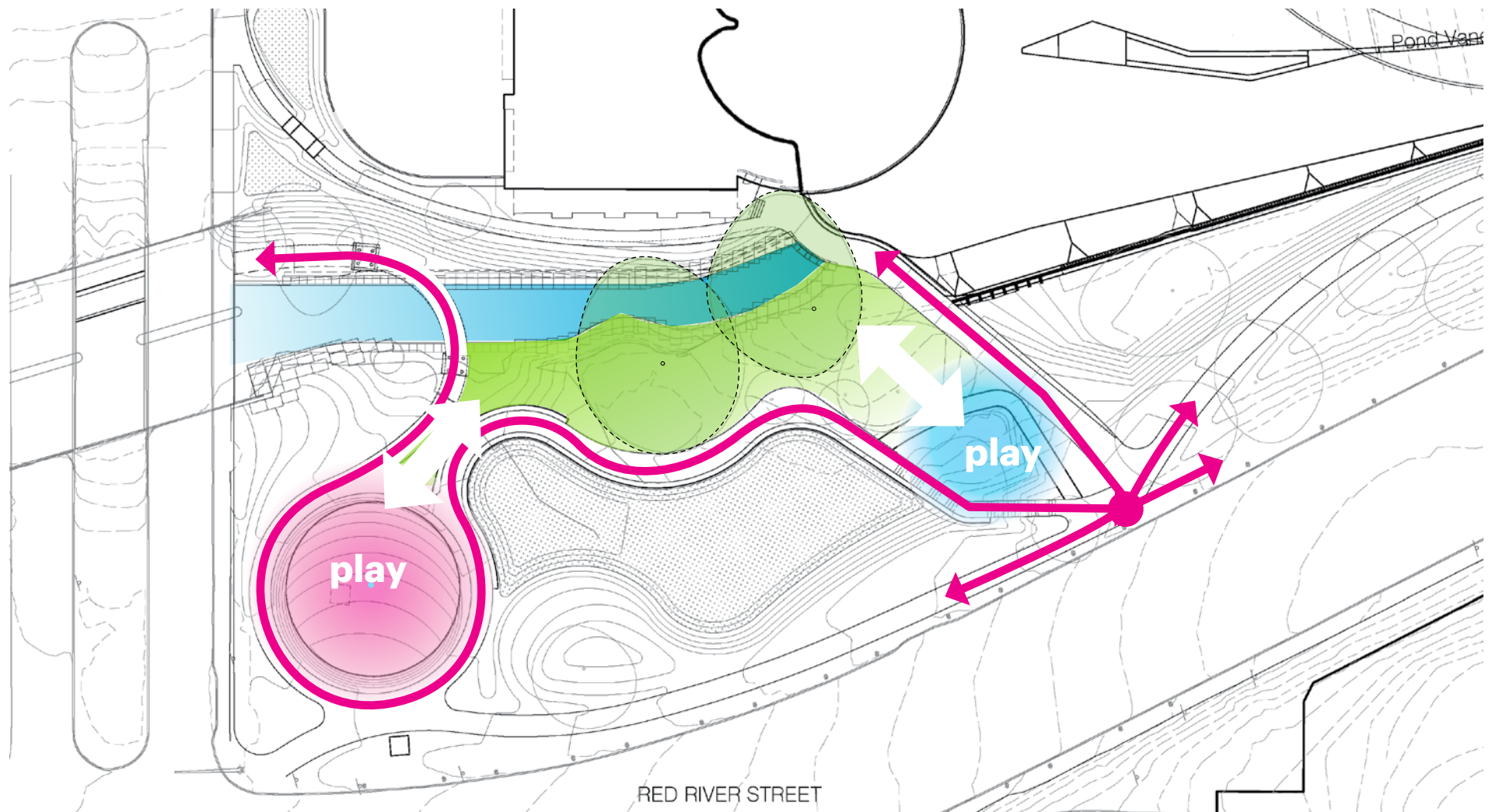
- Demonstration of a living water system at southeast park entry
- An offline wetland that anchors the other water garden areas
- Nexus of several routes around the inlet dam

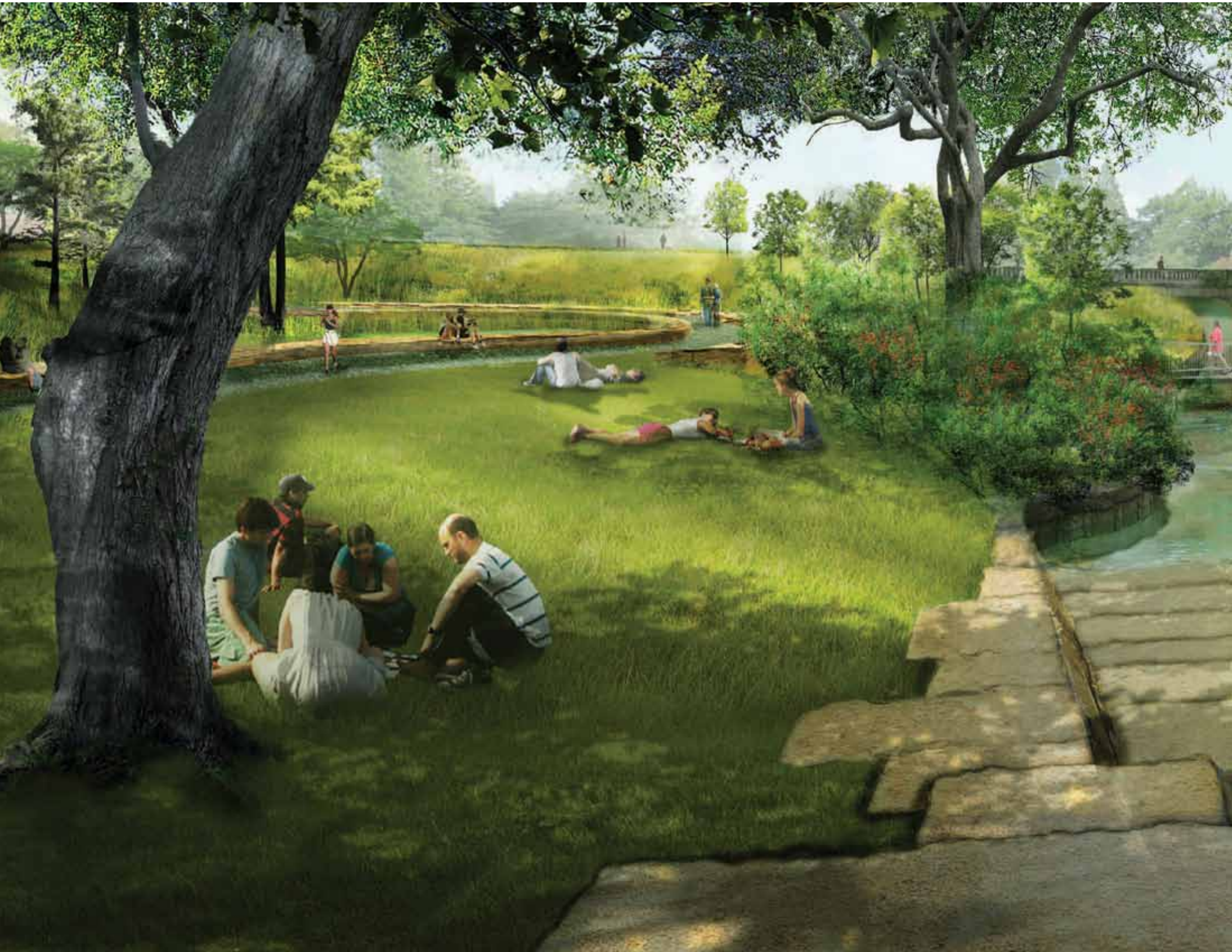




Water Garden

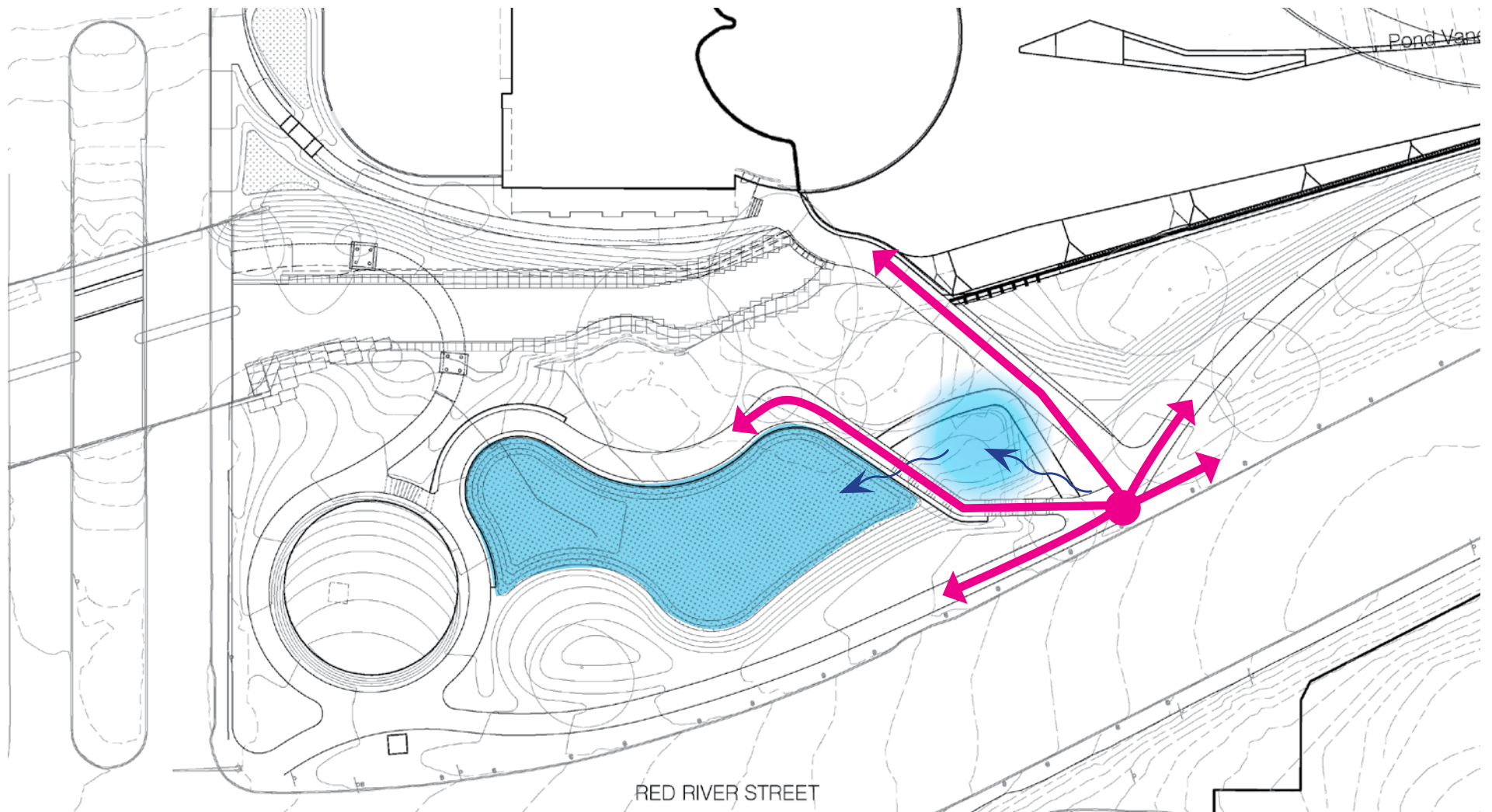
- Picnic/ resting lawn at the headwaters of Waller Creek
- Anchoring location for ecoweir, play program, and flow from dam
- Geological stonework unifies the water garden elements





The Spring

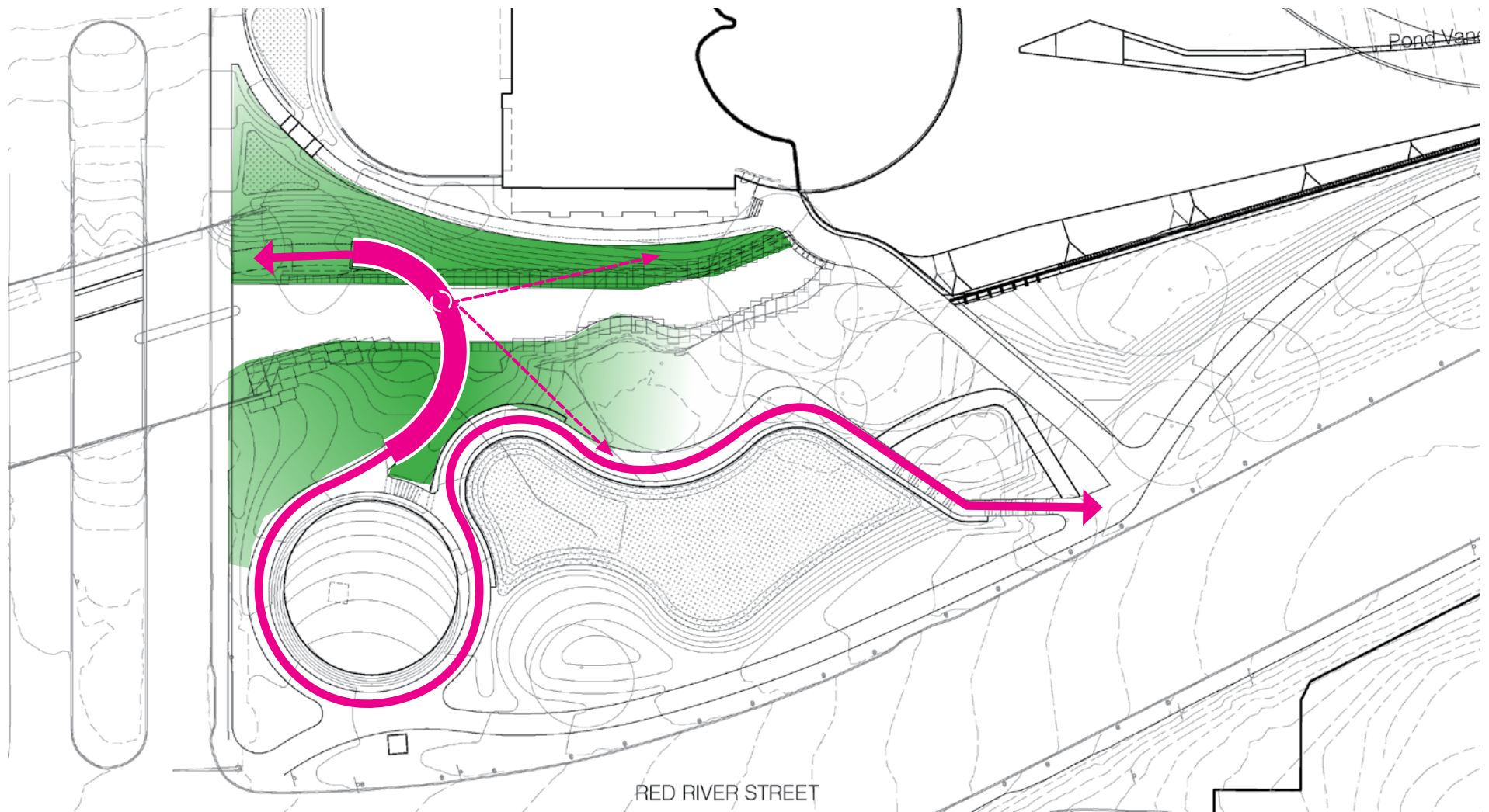
- Formed by crossroads of circulation and Tunnel related elements
- Shapes narrative of a water system that feeds the wetland terrace
- Potential mix of tunnel source flow + seasonal water play features





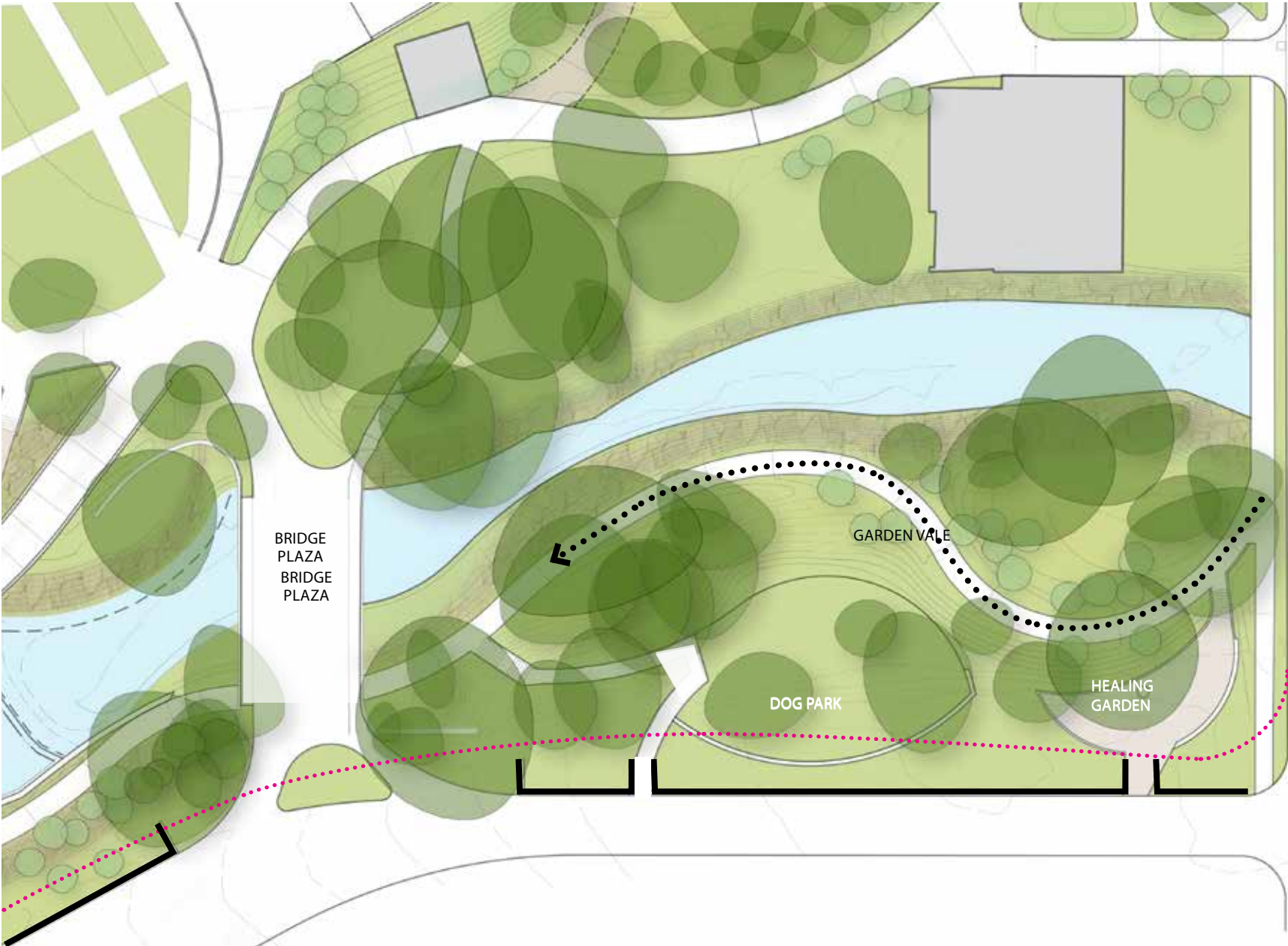
Arc Bridge

- Marks the beginning of the Waller Creek Trail
- Bridge bend sends visitors views into adjacent water gardens
- Constant water regime fosters an unusually lush landscape





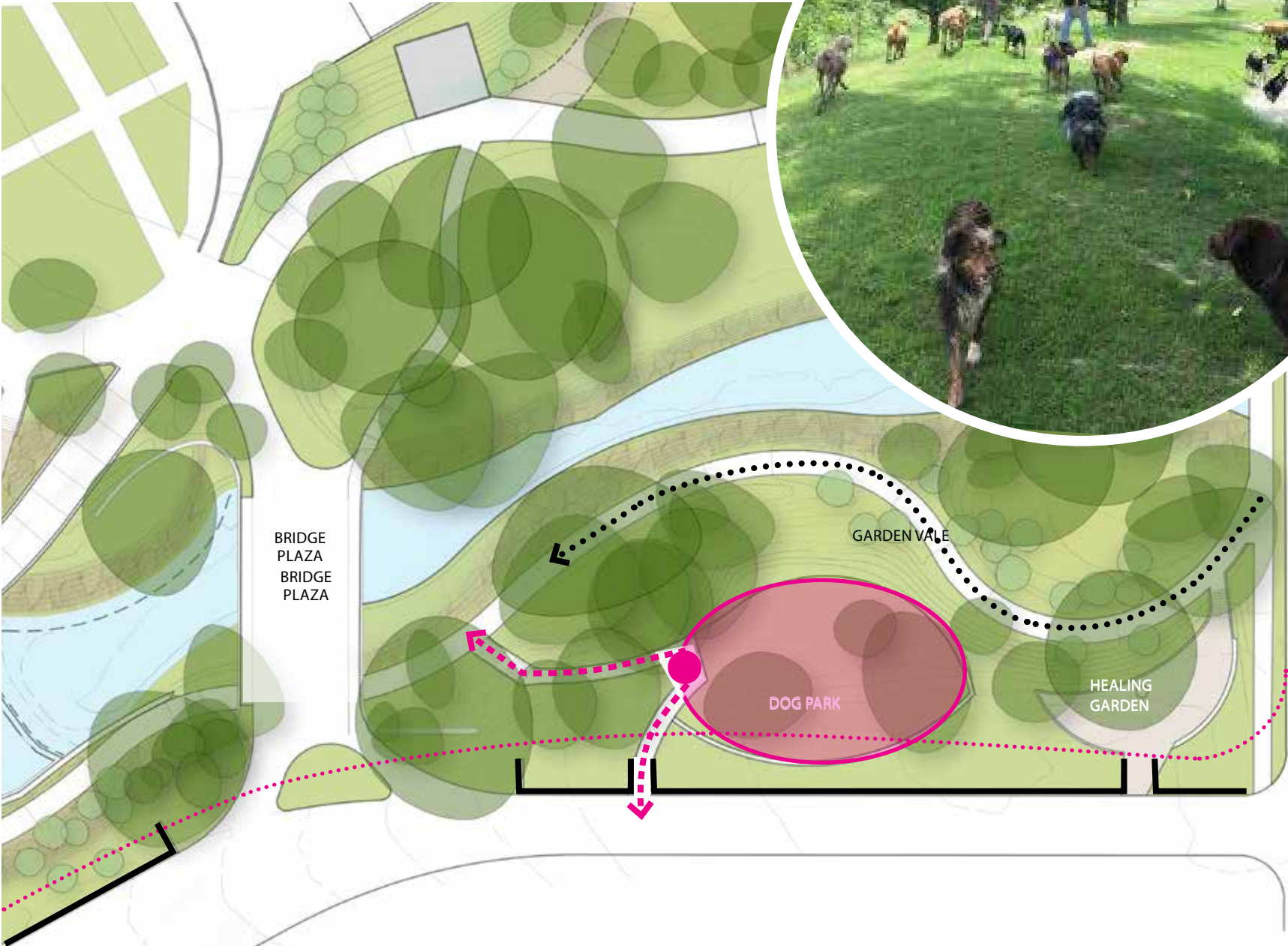
Northeast Corner



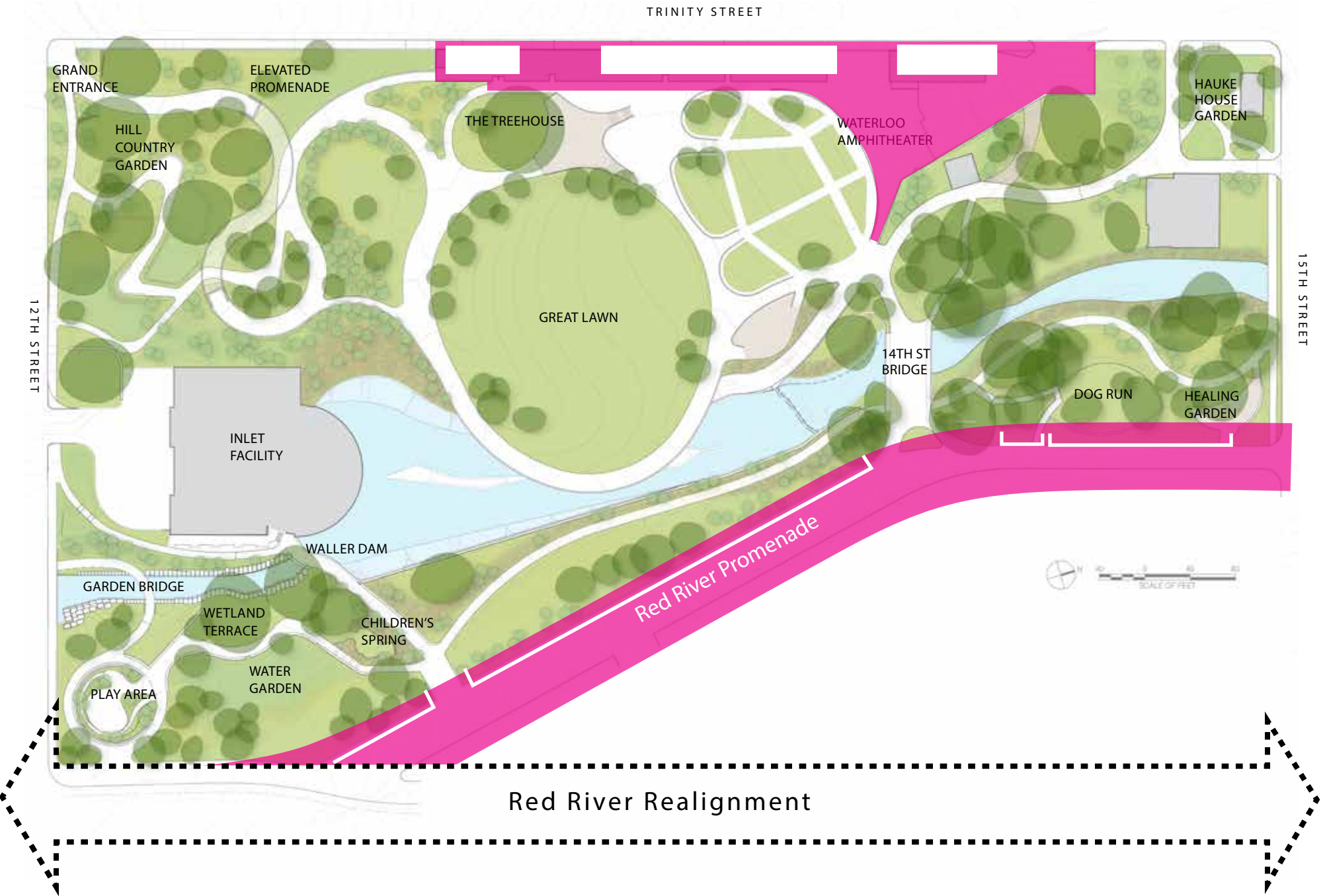
Northeast Corner: Garden Vale



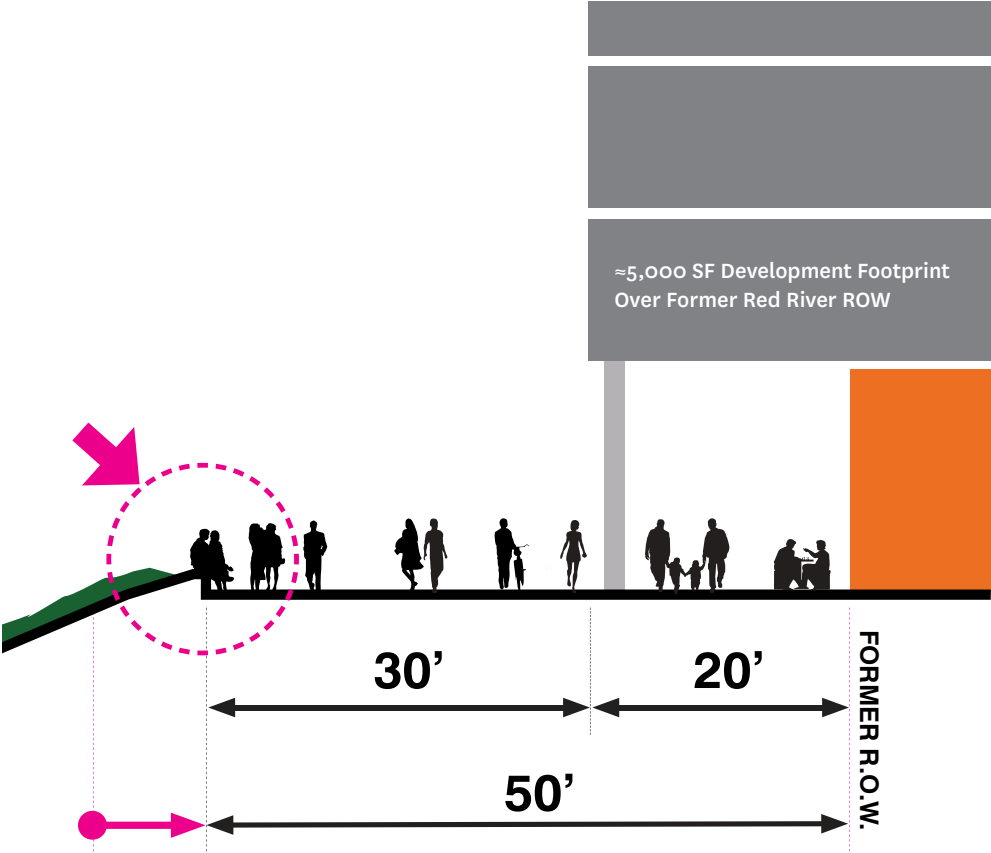
Northeast Corner: Dog Run



Performance Venue + Red River Promenade

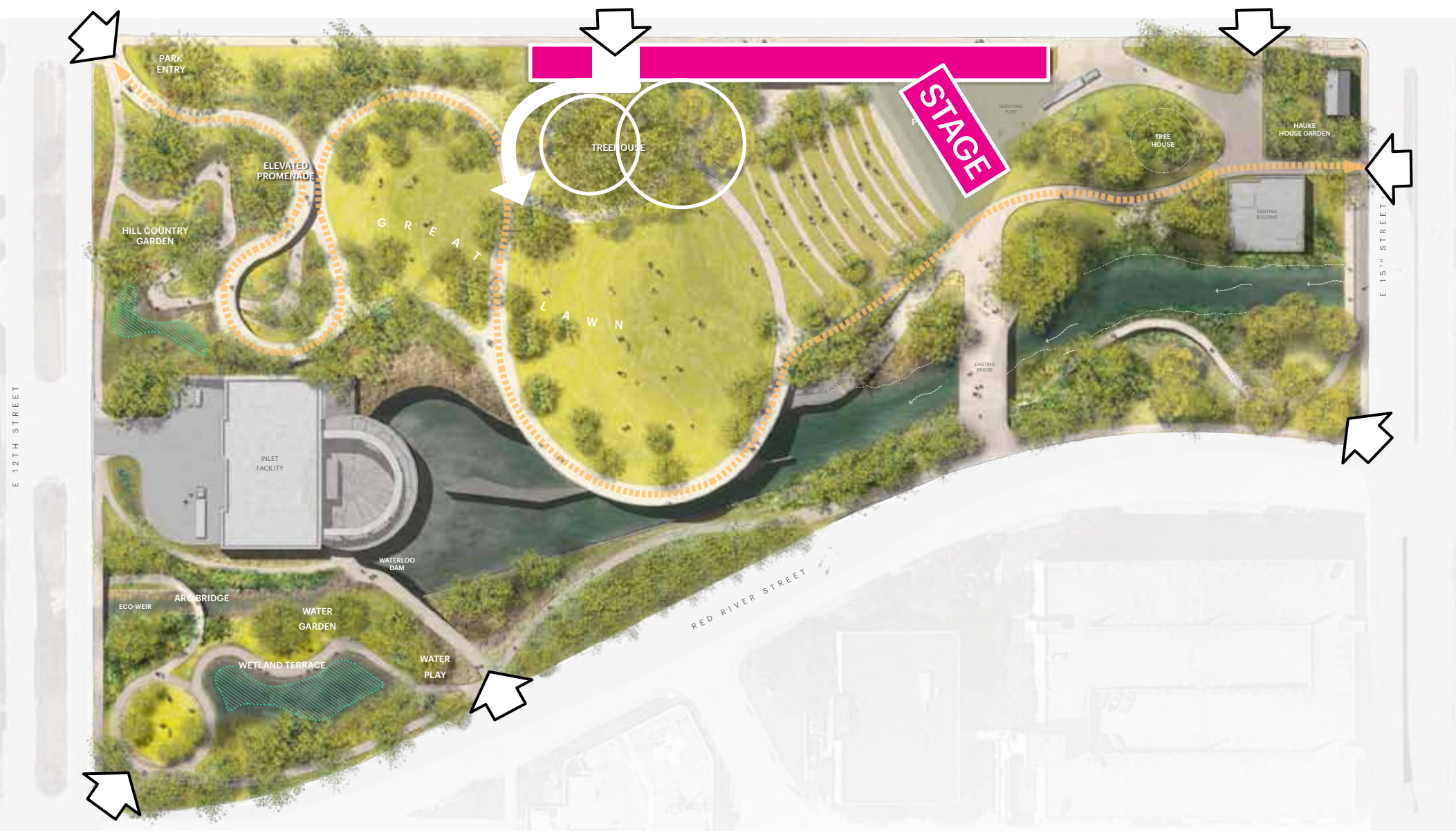


Red River Promenade

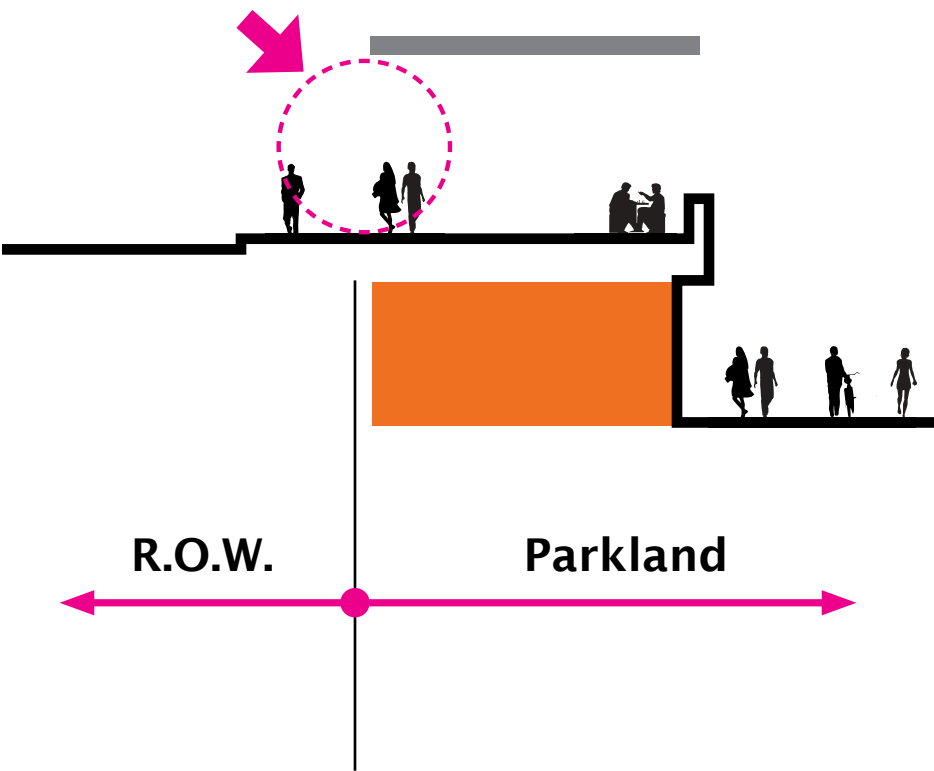


Site Walls and Edge Program

Performance Venue



Trinity Street Portals



Performance Venue and Edge Program



