

An aerial photograph of Austin, Texas, taken during the 'golden hour' of sunset. The Colorado River flows from the left towards the center, with several bridges crossing it. The city skyline is visible on the right, with numerous skyscrapers and buildings illuminated by the warm, orange light of the setting sun. The foreground shows a mix of urban development and greenery, including a park area with a baseball field. The sky transitions from a deep blue at the top to a bright orange near the horizon.

## **Waller Creek Conservancy Project Overview**

An aerial, black-and-white photograph of Austin, Texas. The image shows a dense urban grid with numerous streets and buildings. A major highway, likely I-35, runs vertically through the center of the city. The Colorado River is visible in the lower-left corner, winding through the landscape. The overall shape of the city is irregular, following the river and the highway. A yellow rectangular box is superimposed over the center of the image, containing the text "The shape of Austin shapes our lives".

**The shape of Austin shapes our lives**

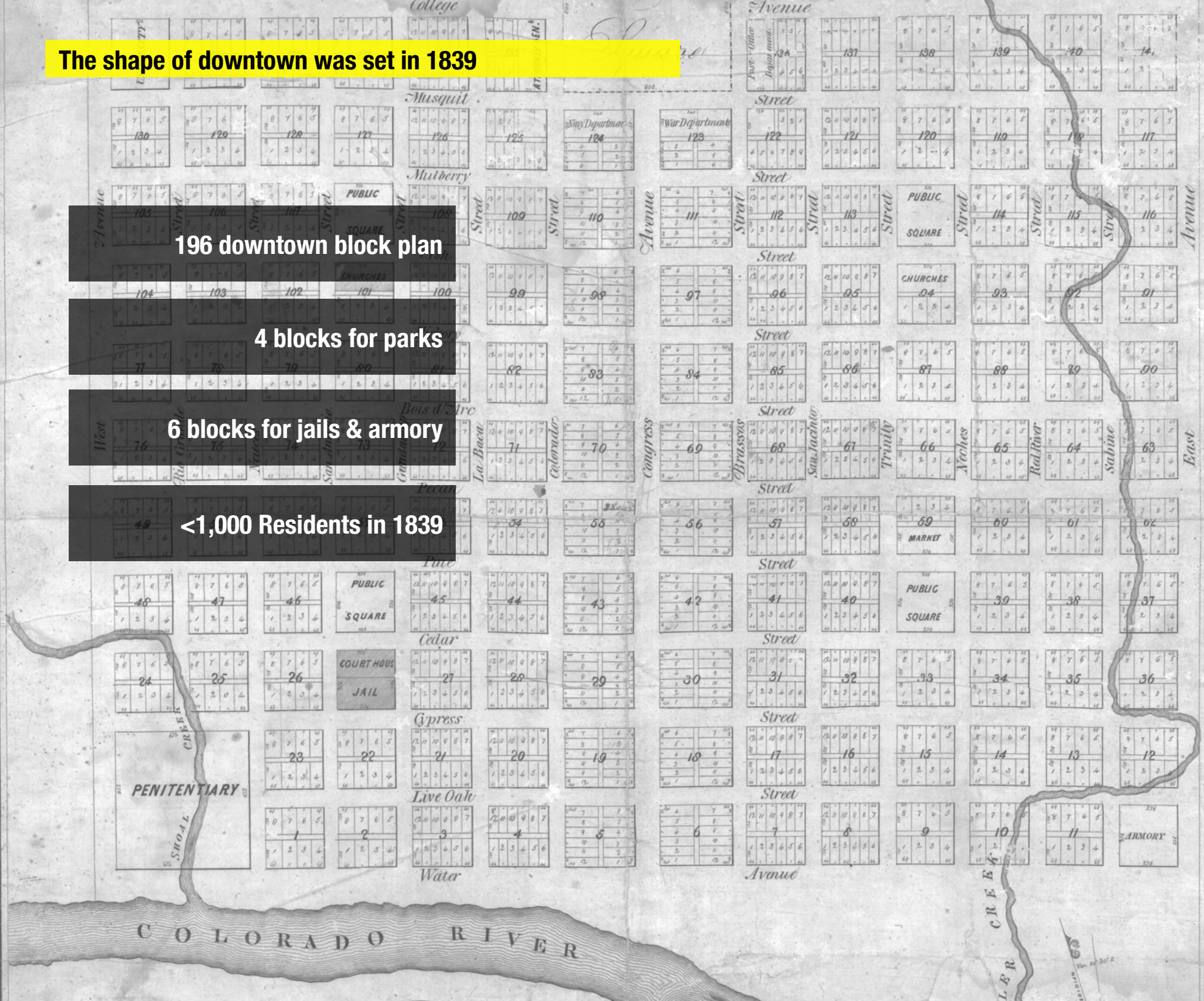
The shape of downtown was set in 1839

196 downtown block plan

4 blocks for parks

6 blocks for jails & armory

<1,000 Residents in 1839



After 175 years, urban planning has evolved

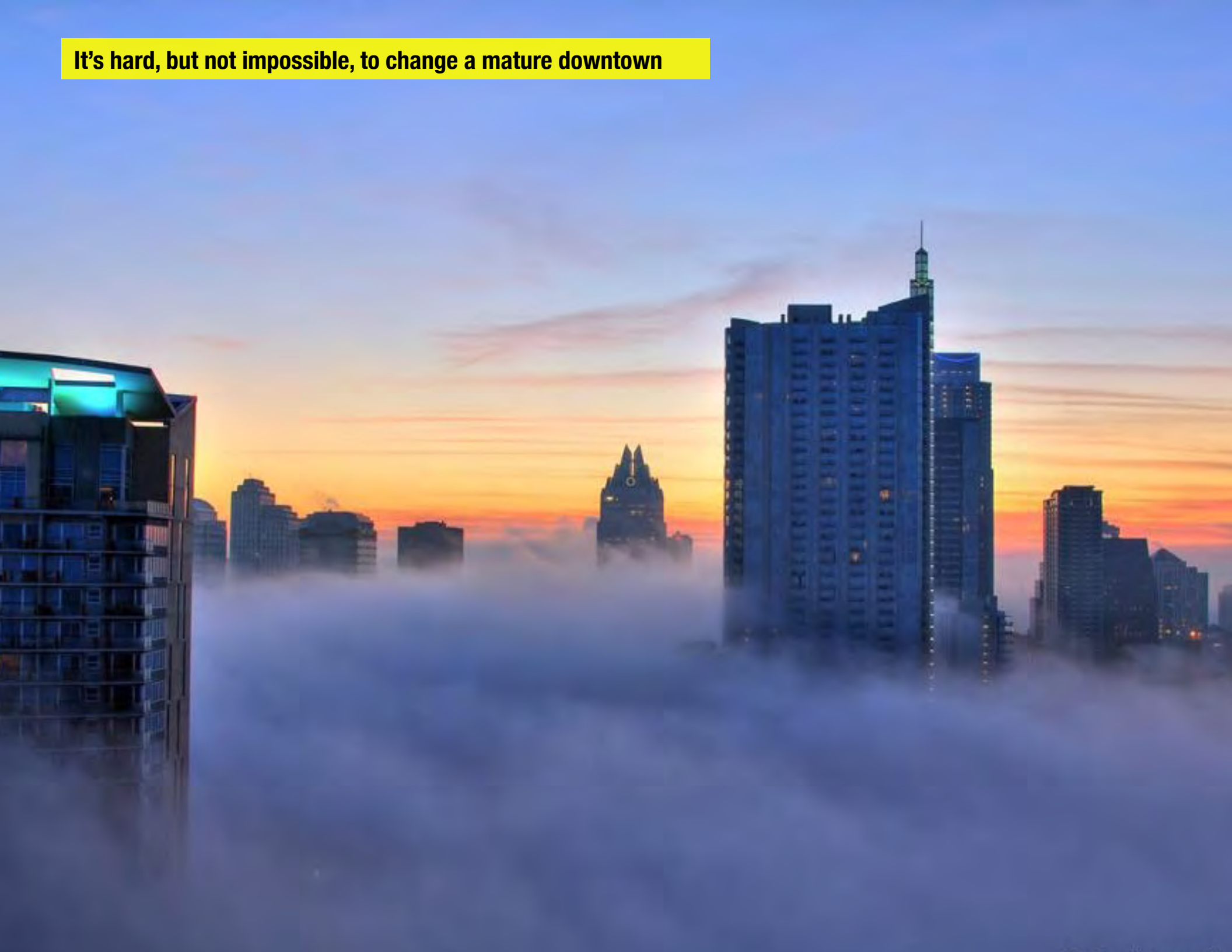
1839

2014

Basic Function + Happiness



**It's hard, but not impossible, to change a mature downtown**



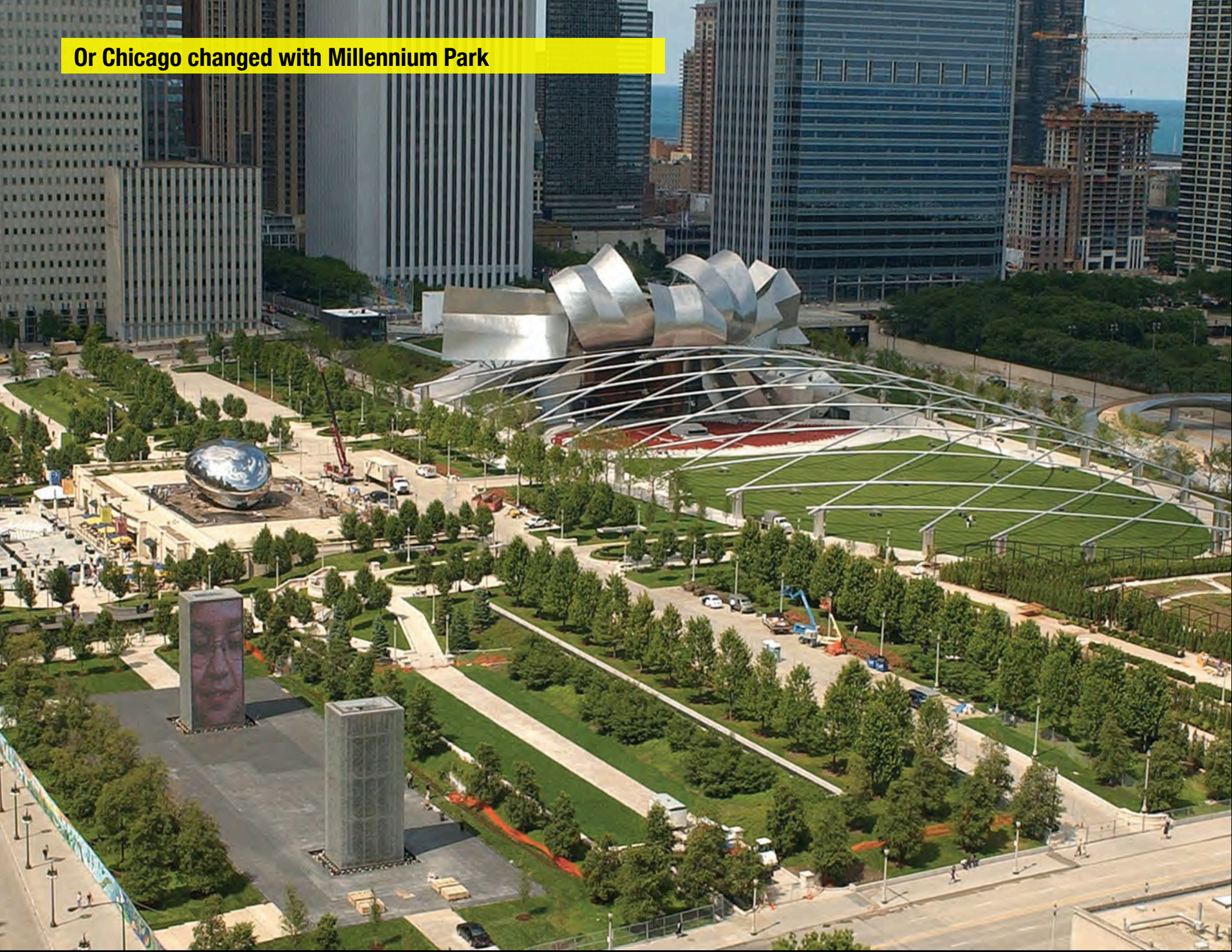
## The way New York changed with the High Line



**Or Houston changed with Discovery Green**



**Or Chicago changed with Millennium Park**



These are the places that bring a city together

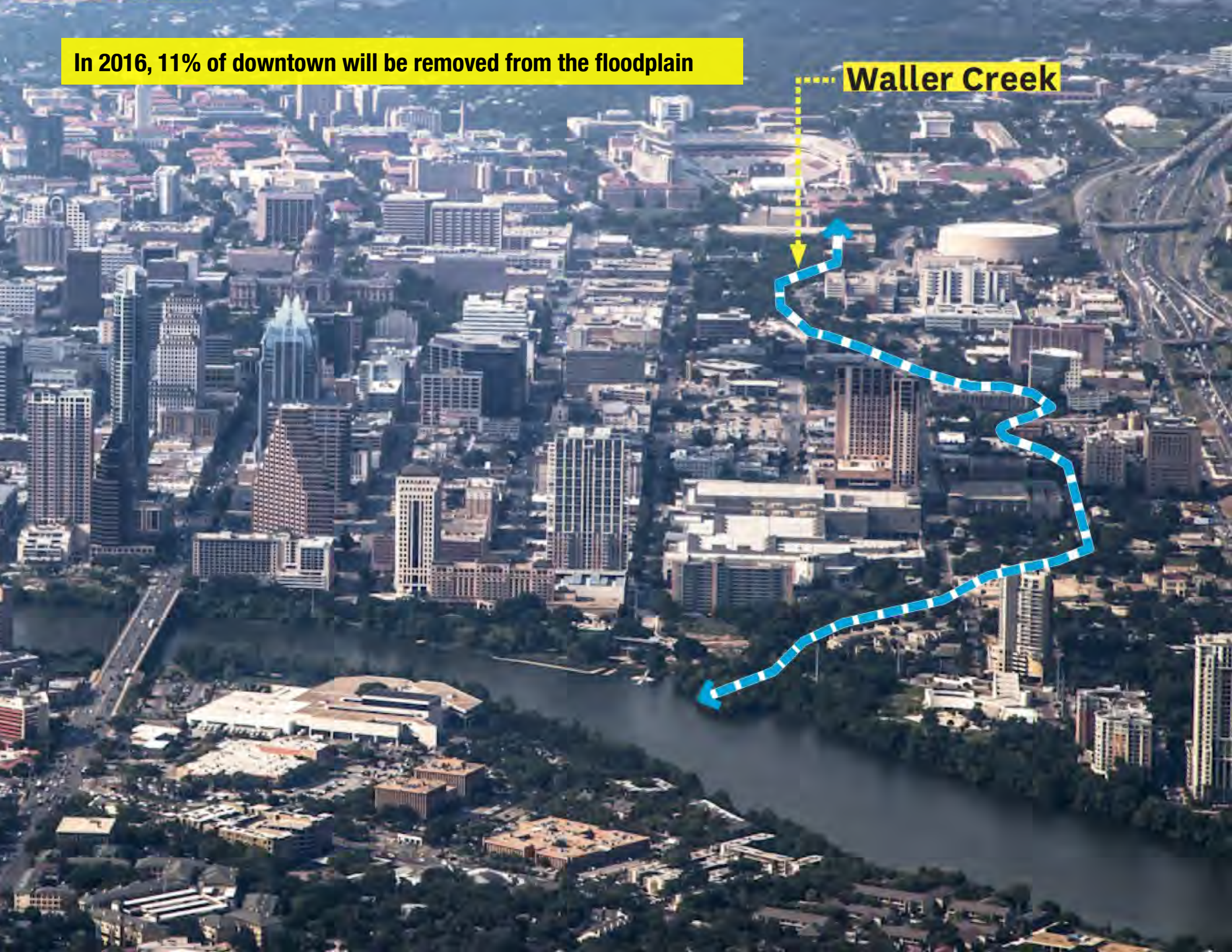


A photograph of Waller Creek flowing over a stone weir. The water is turbulent and white with foam as it cascades over the edge. In the background, a stone bridge with arches spans the creek, surrounded by dense green trees and foliage. A metal railing is visible in the foreground, and a stone wall is on the left side of the frame.

Waller Creek is our opportunity

**In 2016, 11% of downtown will be removed from the floodplain**

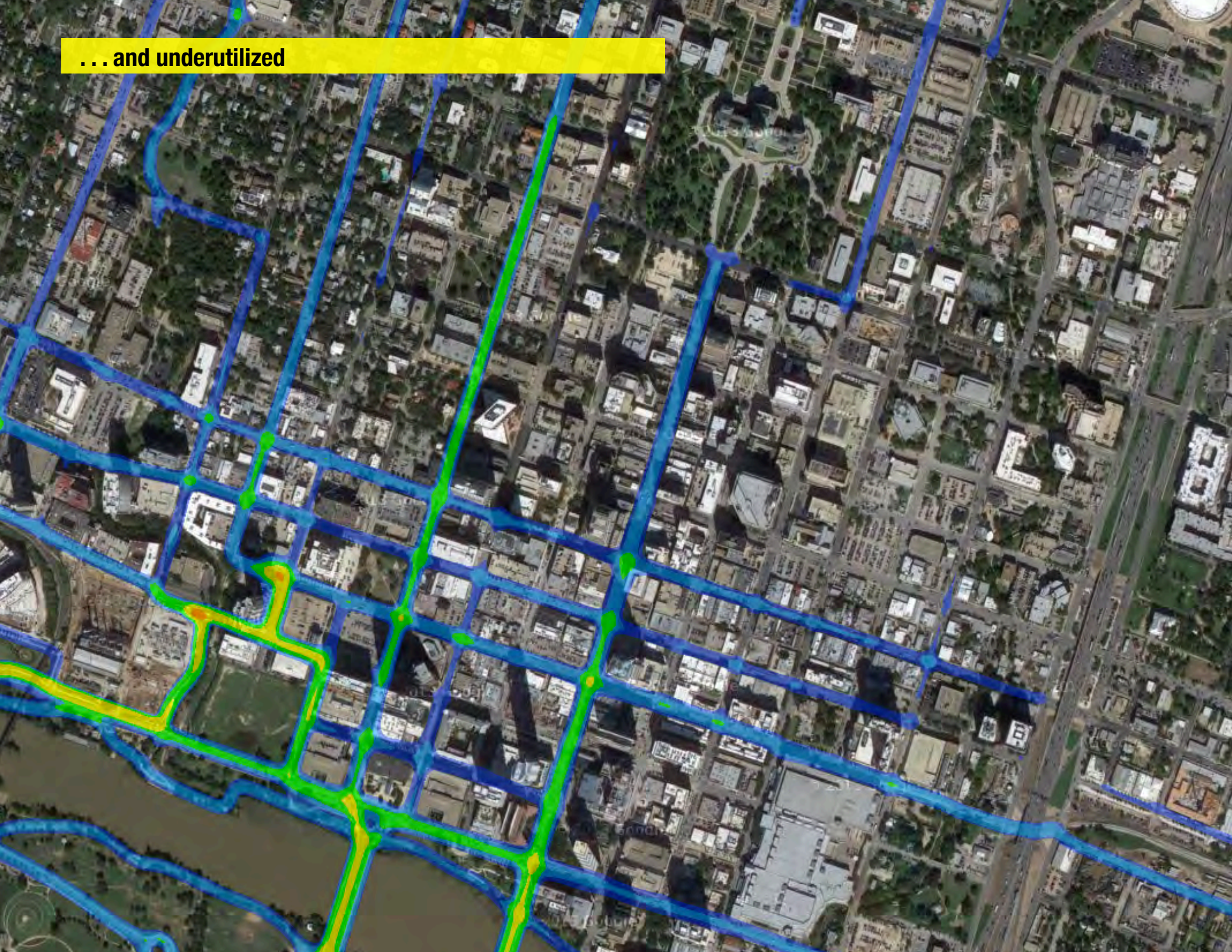
**Waller Creek**



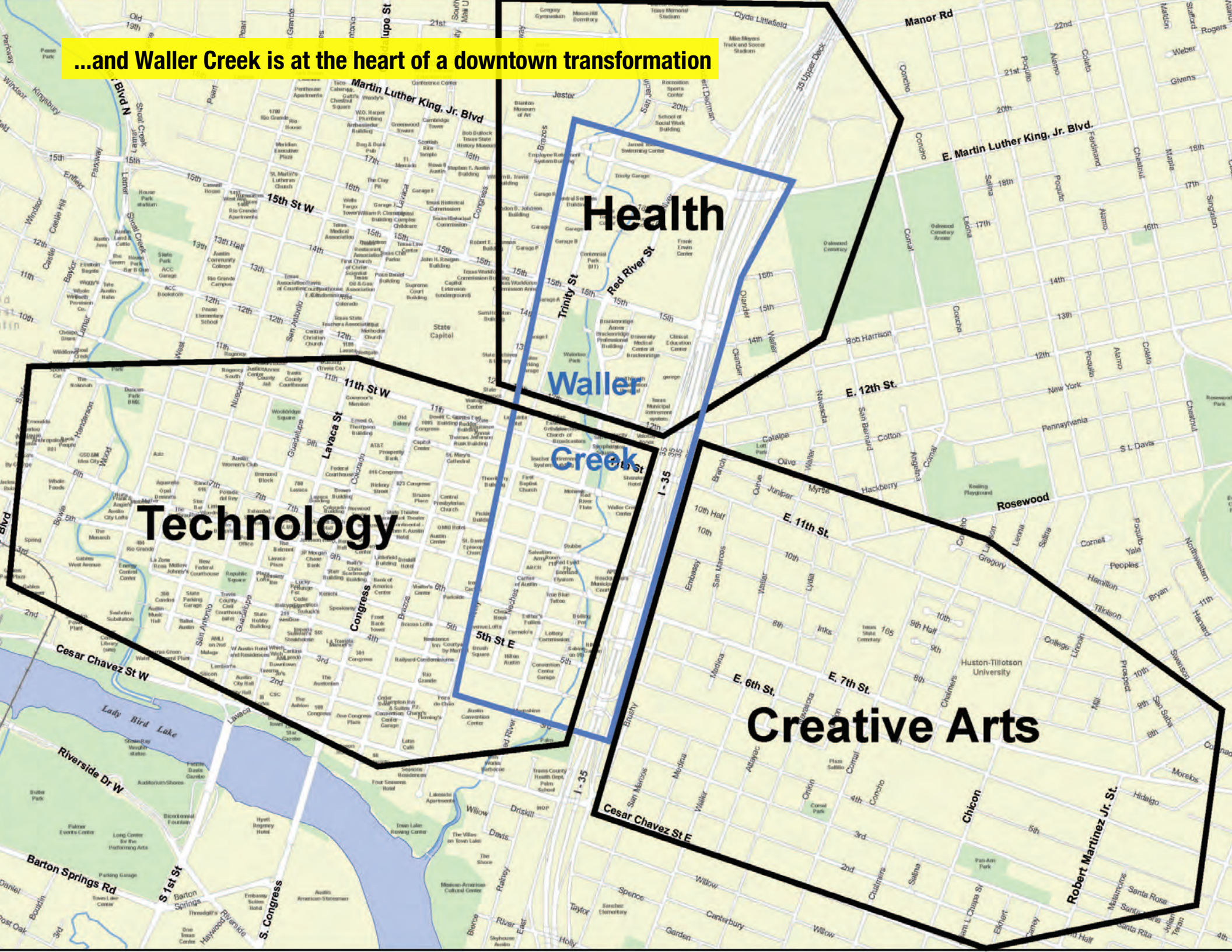
**Today, much of Waller Creek is underdeveloped**



... and underutilized



...and Waller Creek is at the heart of a downtown transformation



## Starting with an International Design Competition

First international design competition in Texas

Requirements from CoA Waller Creek District  
Master Plan

Independent jury of world-renowned experts

Technical Advisory Group of City leaders

31 Teams Submitted Plans



Design Waller Creek:  
A Competition

[www.wallercreek.org/finalfo](http://www.wallercreek.org/finalfo)



And the selection & certification of Michael Van Valkenburgh

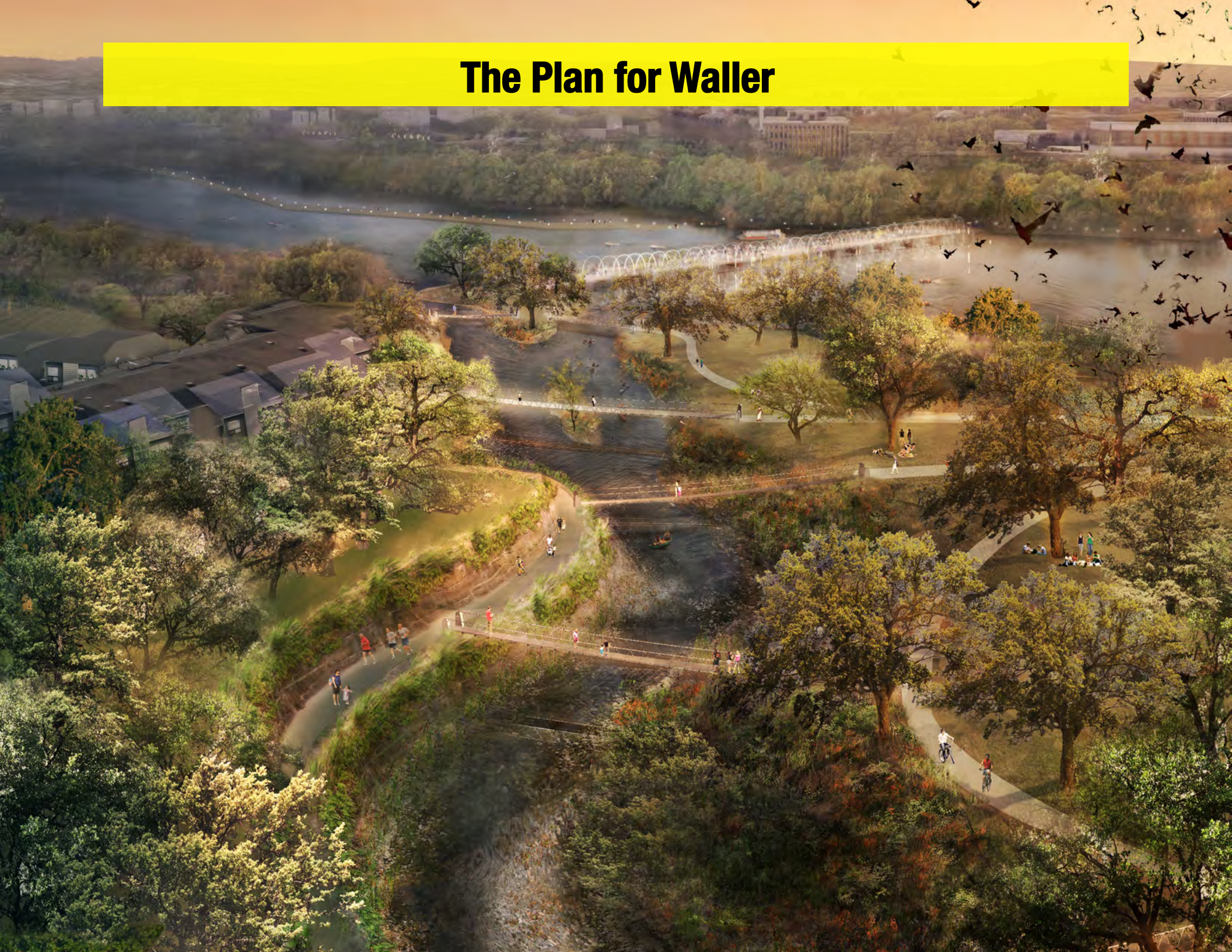


# Shaper of Cities

Landscape architect  
Michael Van Valkenburgh



# The Plan for Waller



## The first step is restoring the creek ecosystem



## The big idea is to transform downtown with a chain of parks



Connectivity with South Austin will be enhanced



E Cesar Chavez Street

Waller Park Place

Driskill Street

Davis Street

Future Development Site

Rainey Street

Emma S. Barrientos  
Mexican American  
Cultural Center

Hike & Bike Trail

Waller Beach Outlet  
Facility

Waller Creek  
Boathouse

Pontoon  
Bridge

**The pontoon bridge will be a gateway to the creek**

