

Leading into the “Lattice” at the delta of the creek



And north to the Grove and Palm Park



Palm Park will come to life with family programming



The refuge is a completely new park near 9th street



That will become a green escape in the middle of downtown



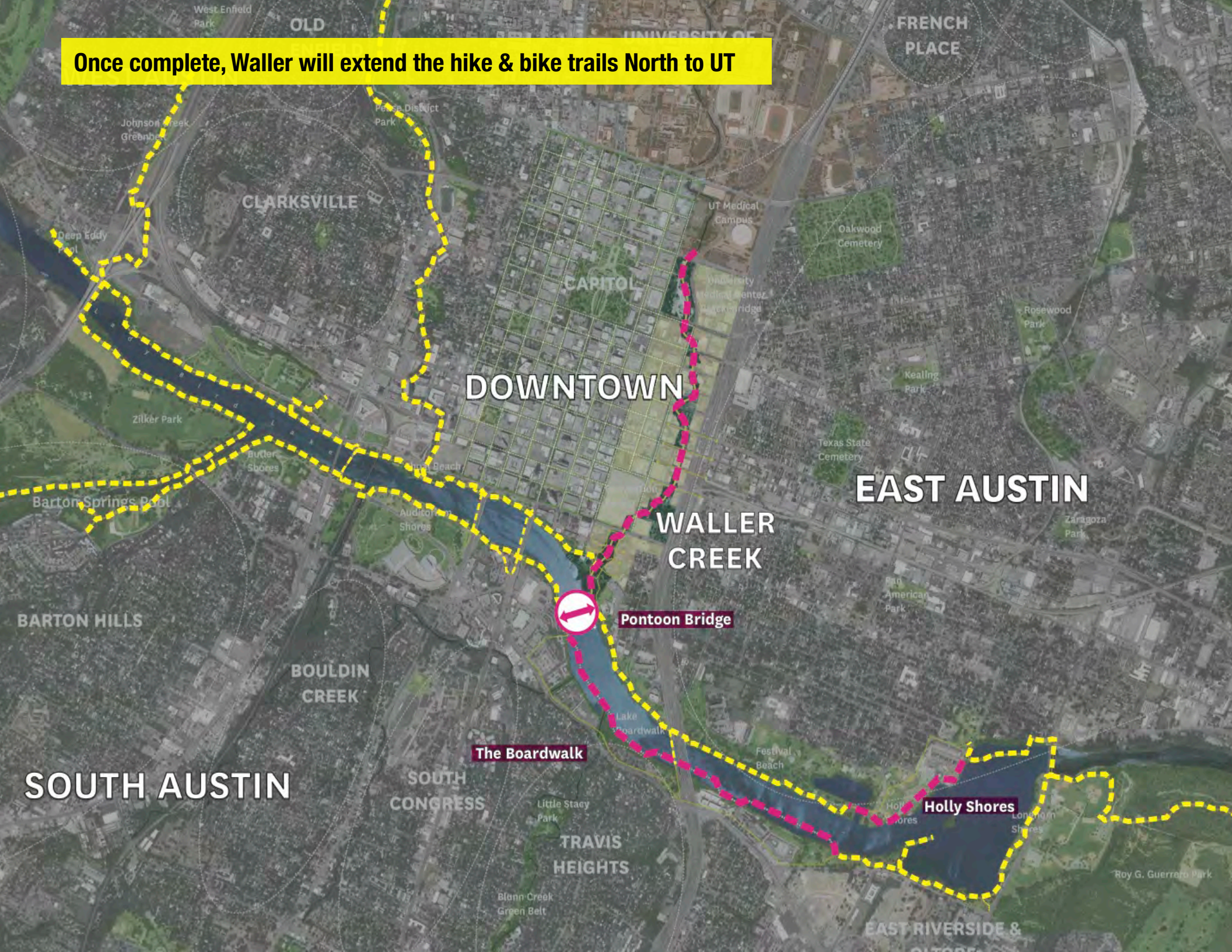
And a connection to Waterloo Park and beyond



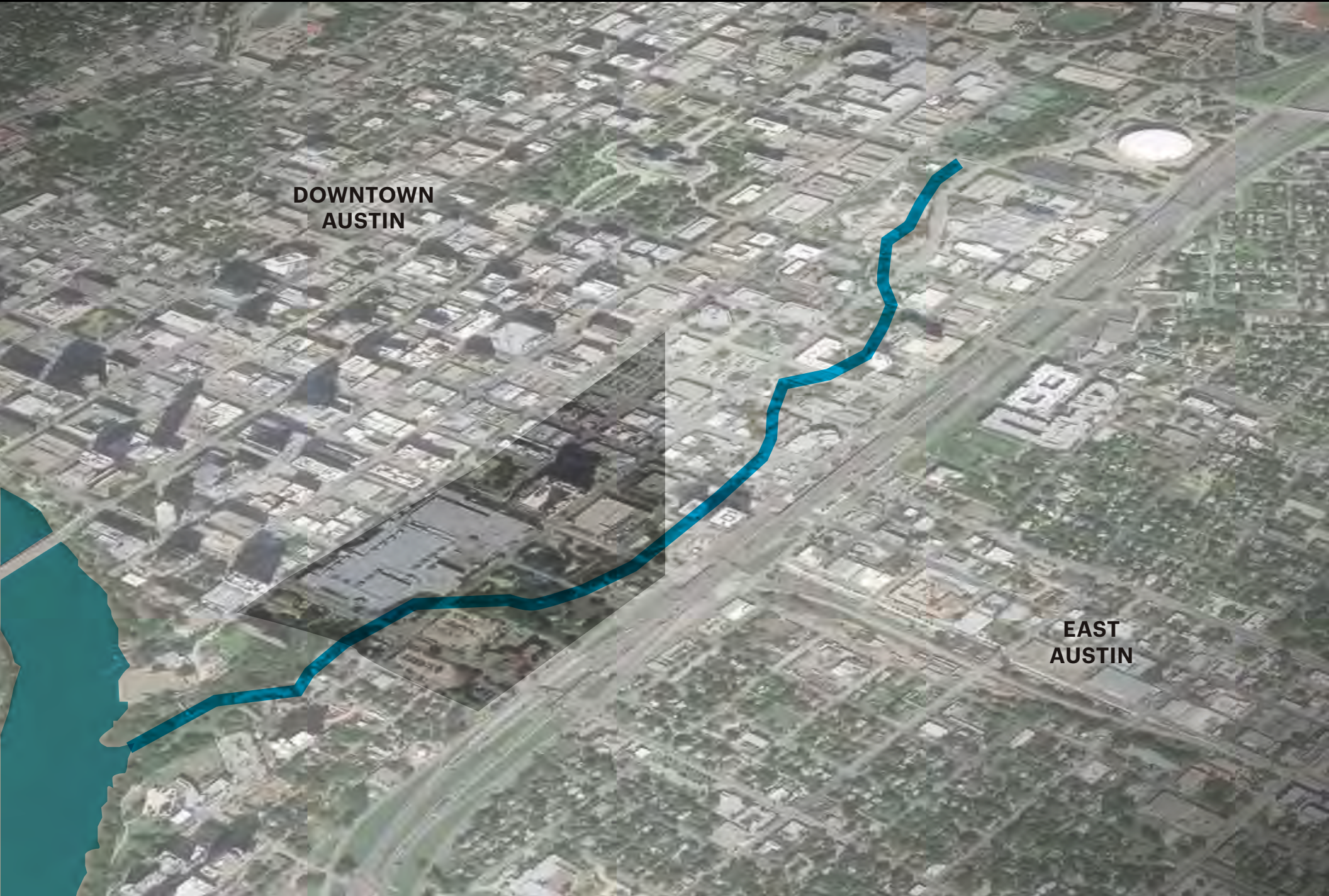
Waterloo park will be rebuilt as a world-class park and downtown venue



Once complete, Waller will extend the hike & bike trails North to UT



turning a neglected urban creek



and two existing urban parks



DOWNTOWN
AUSTIN

WATERLOO PARK

EAST
AUSTIN

PALM PARK

into a chain of 4 parks



Connected by pedestrian and bike trails bringing people off roads and into the Creek

