

A vibrant sunset scene with a bridge and a large flock of birds. The sky is a deep orange and red, with a large flock of birds silhouetted against it. A bridge with a railing is visible in the middle ground, with several people walking on it. The sun is a bright yellow circle on the right side of the horizon, reflecting on the water below. The water is dark with some ripples.

The Asian Community in Austin: a Demographic Snapshot

April 19, 2016

Ryan Robinson
City Demographer
Planning & Development Review Department

Austin's Demographic Story continues to revolve around these three major themes:

- 1. Long-term, sustained, rapid job and population growth.**
- 2. Profound diversification.**
- 3. Stubborn structural and spatial socio-economic separations.**

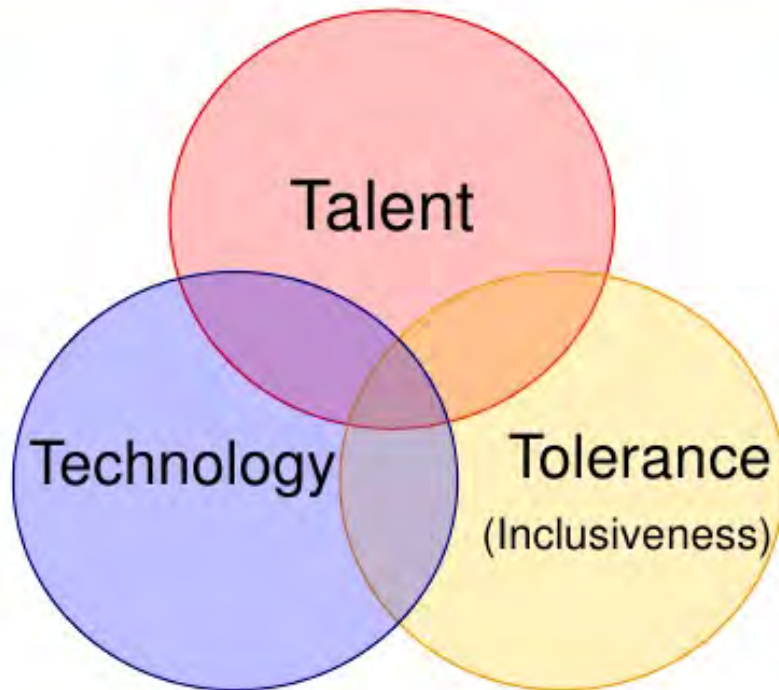
The Asian Community in Austin: a Demographic Snapshot

Ryan Robinson
City Demographer
City of Austin



Austin MSA Population History: 1900 to 2015

The “3Ts”

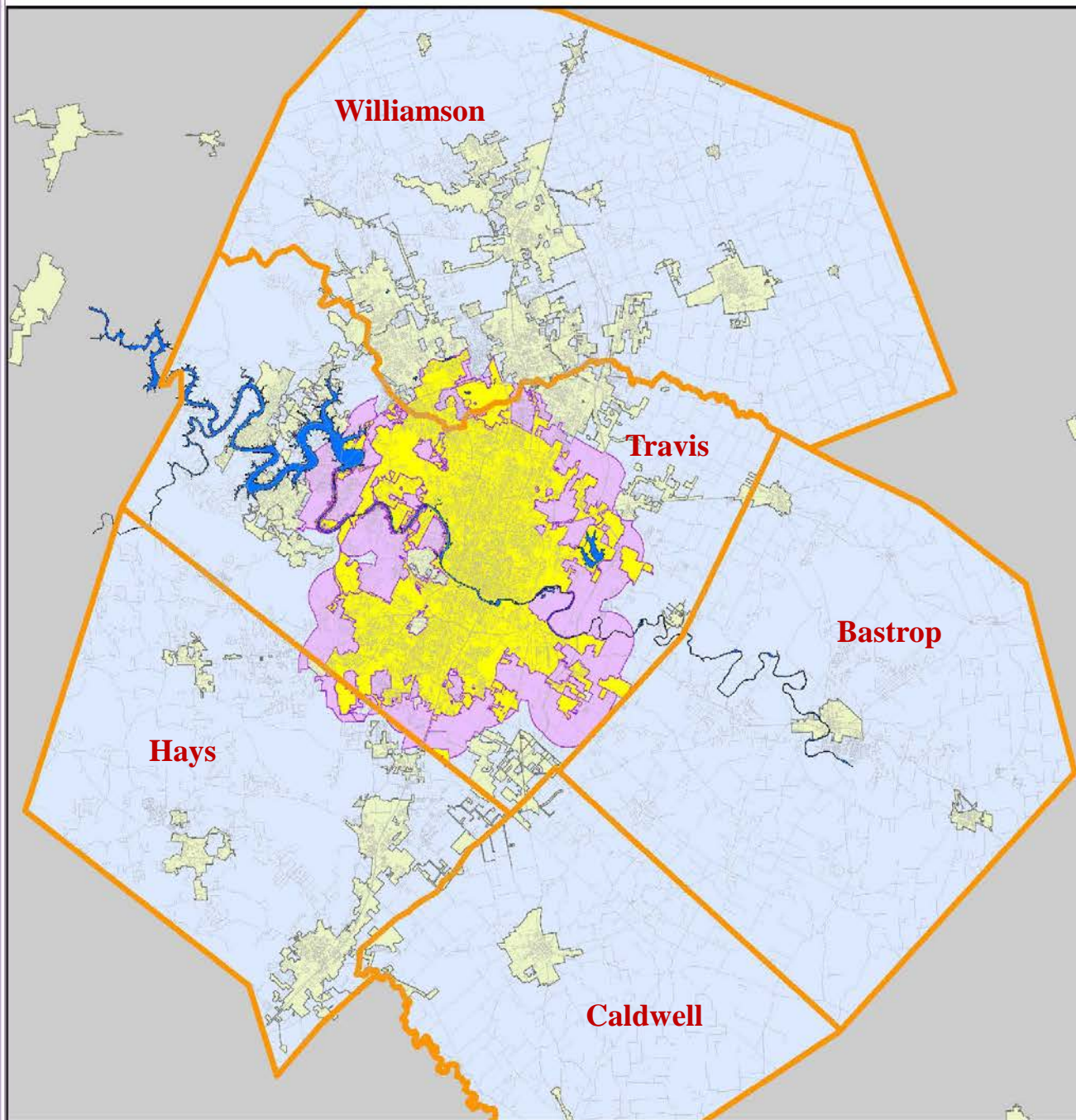


**Regional
Growth**

Austin-- Round Rock MSA

Metropolitan Statistical Area

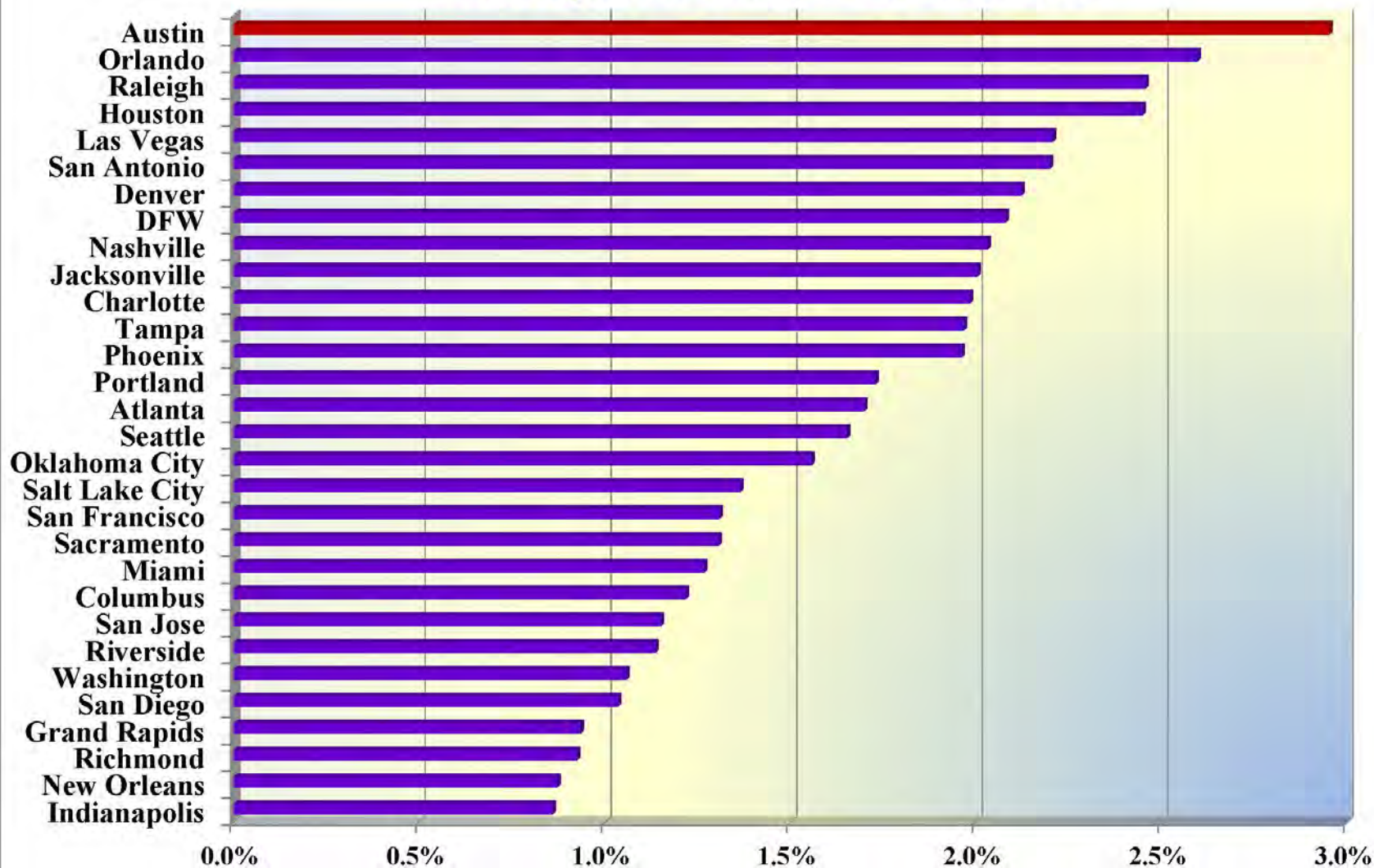
January 2013



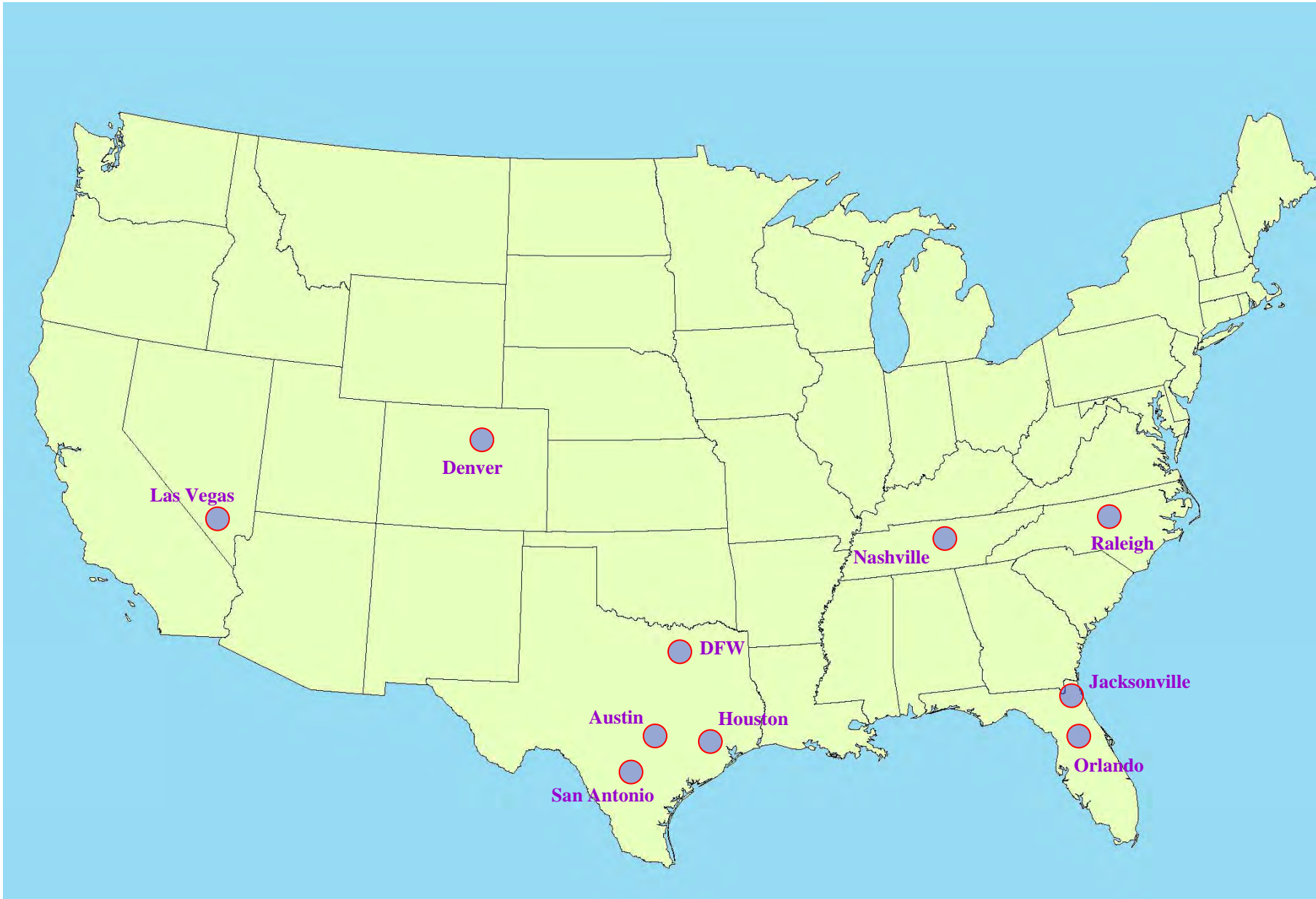
**City of Austin
Full and Limited
Jurisdiction**

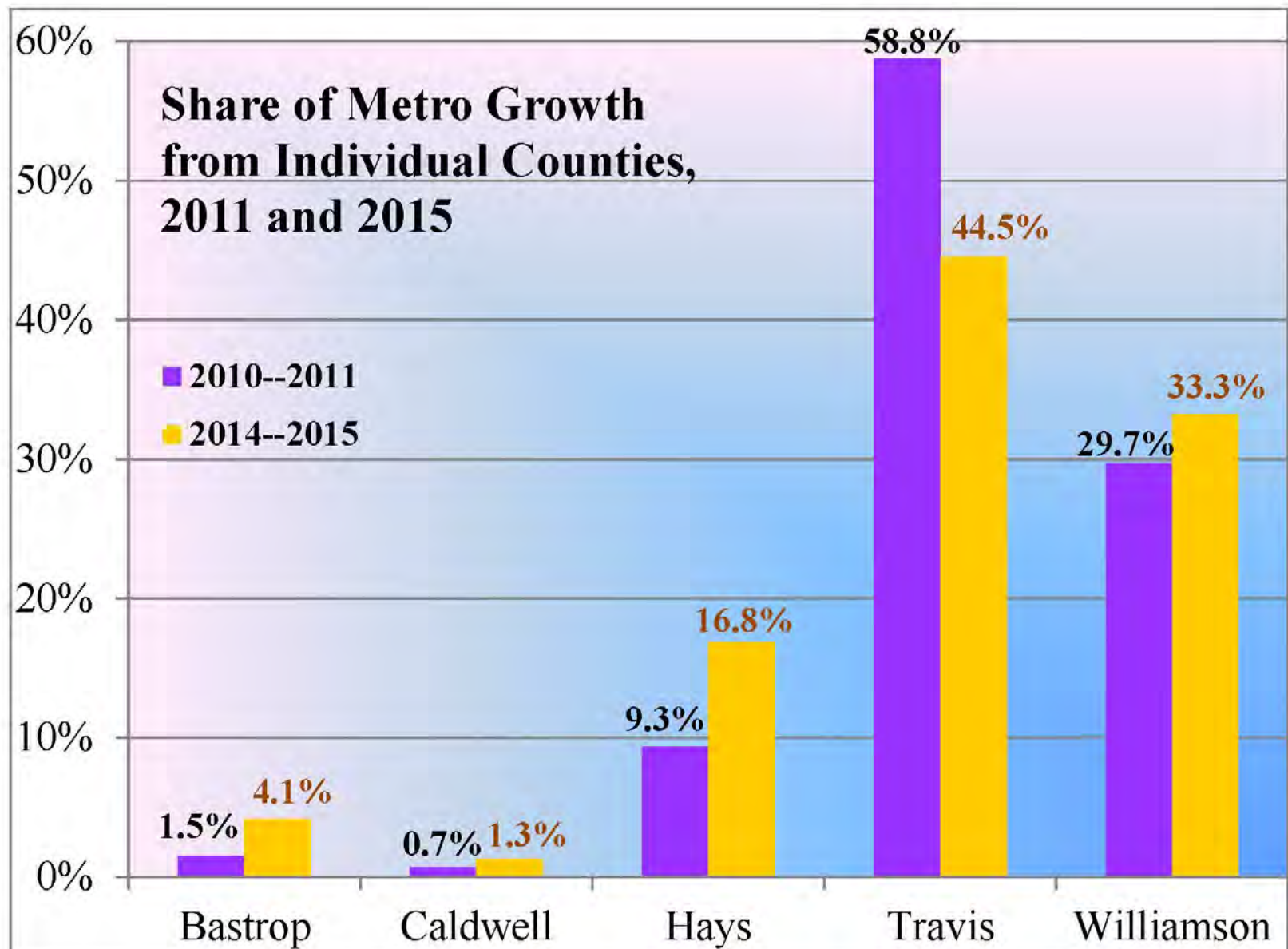
**City of Austin
Extra-Territorial
Jurisdiction**

Top 30 Fastest Growing Large (1.0 million +) Metropolitan Areas: 2014 to 2015

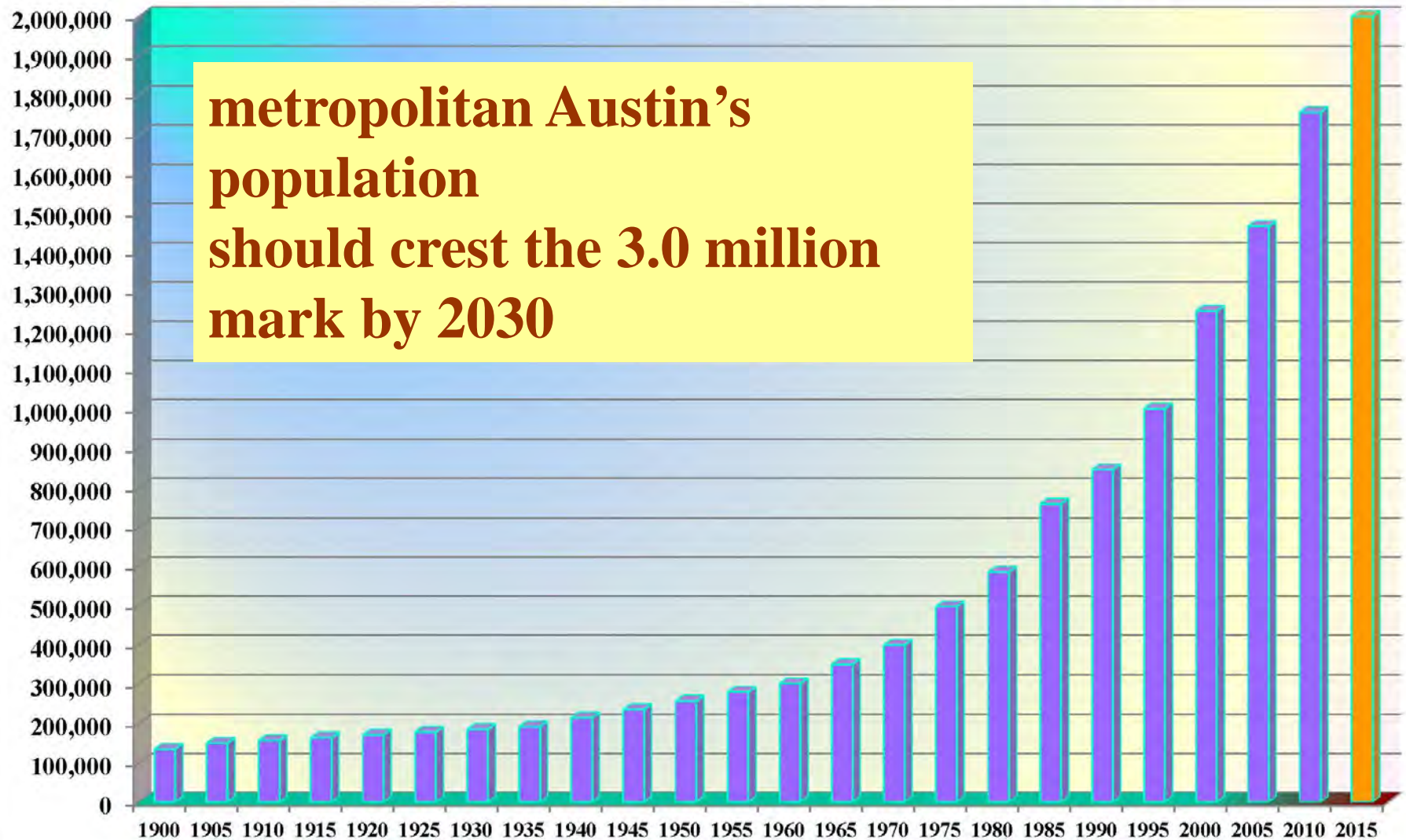


10 Fastest Growing Metro Areas, 2014 to 2015

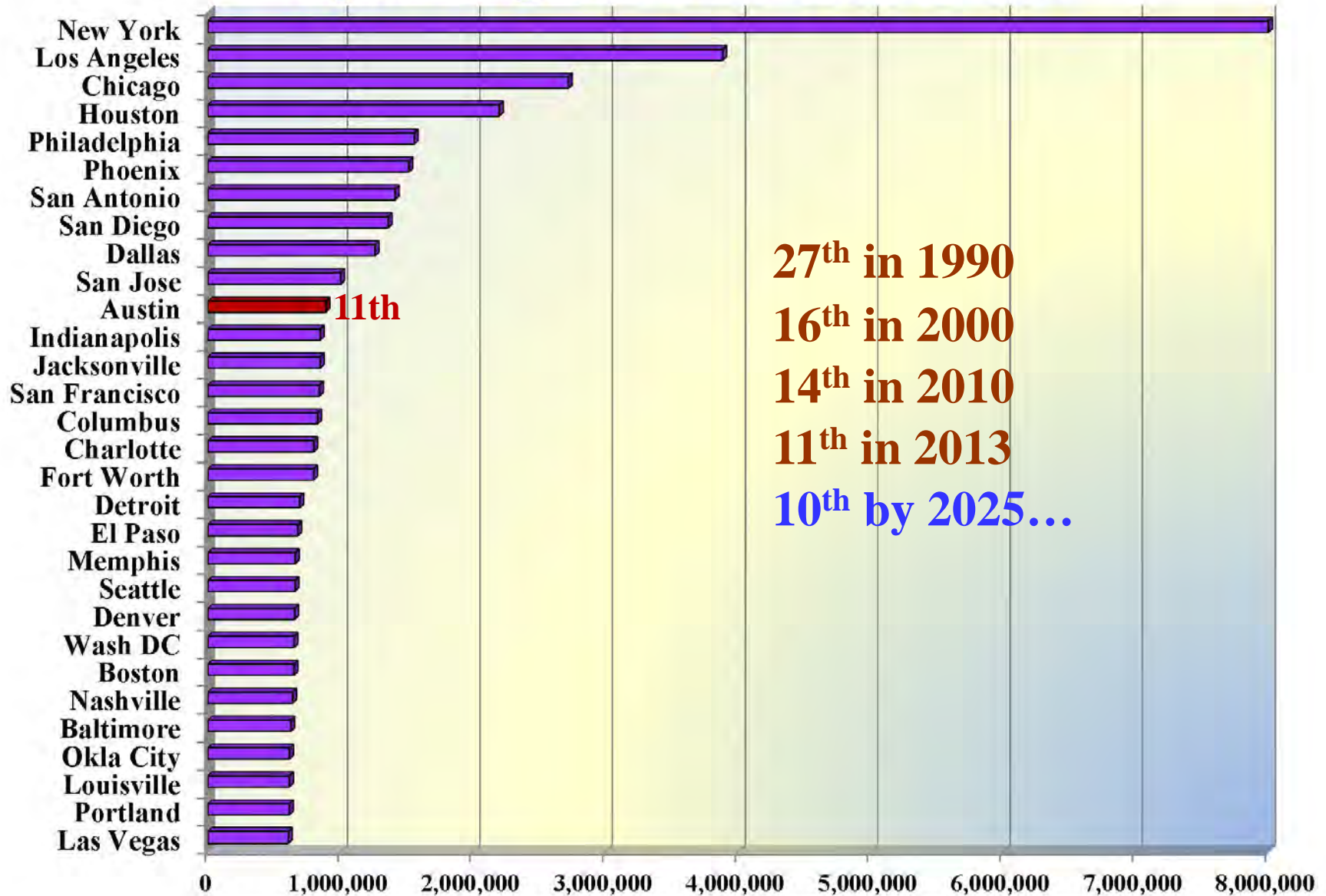




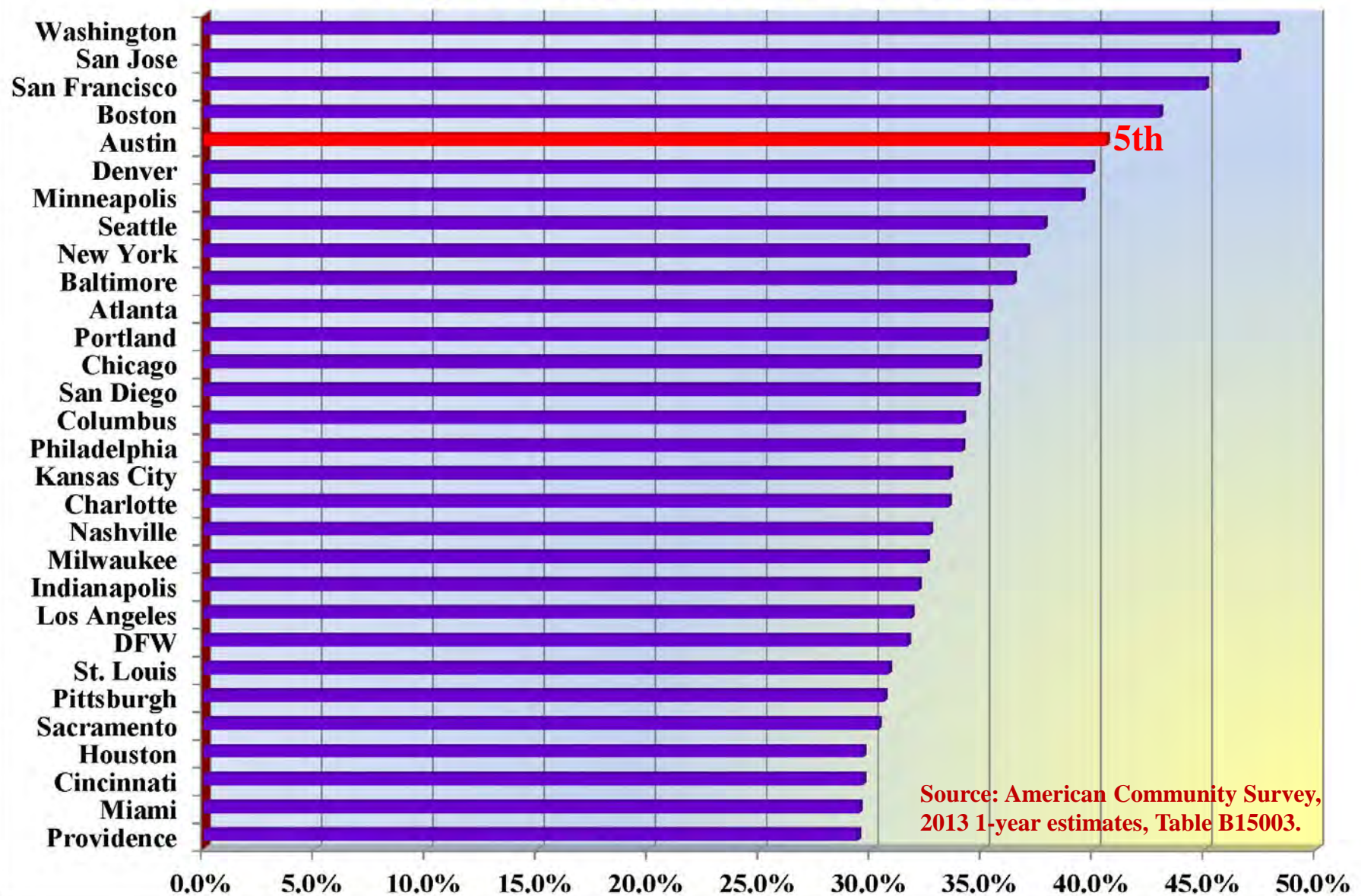
Austin MSA Population History: 1900 to 2015

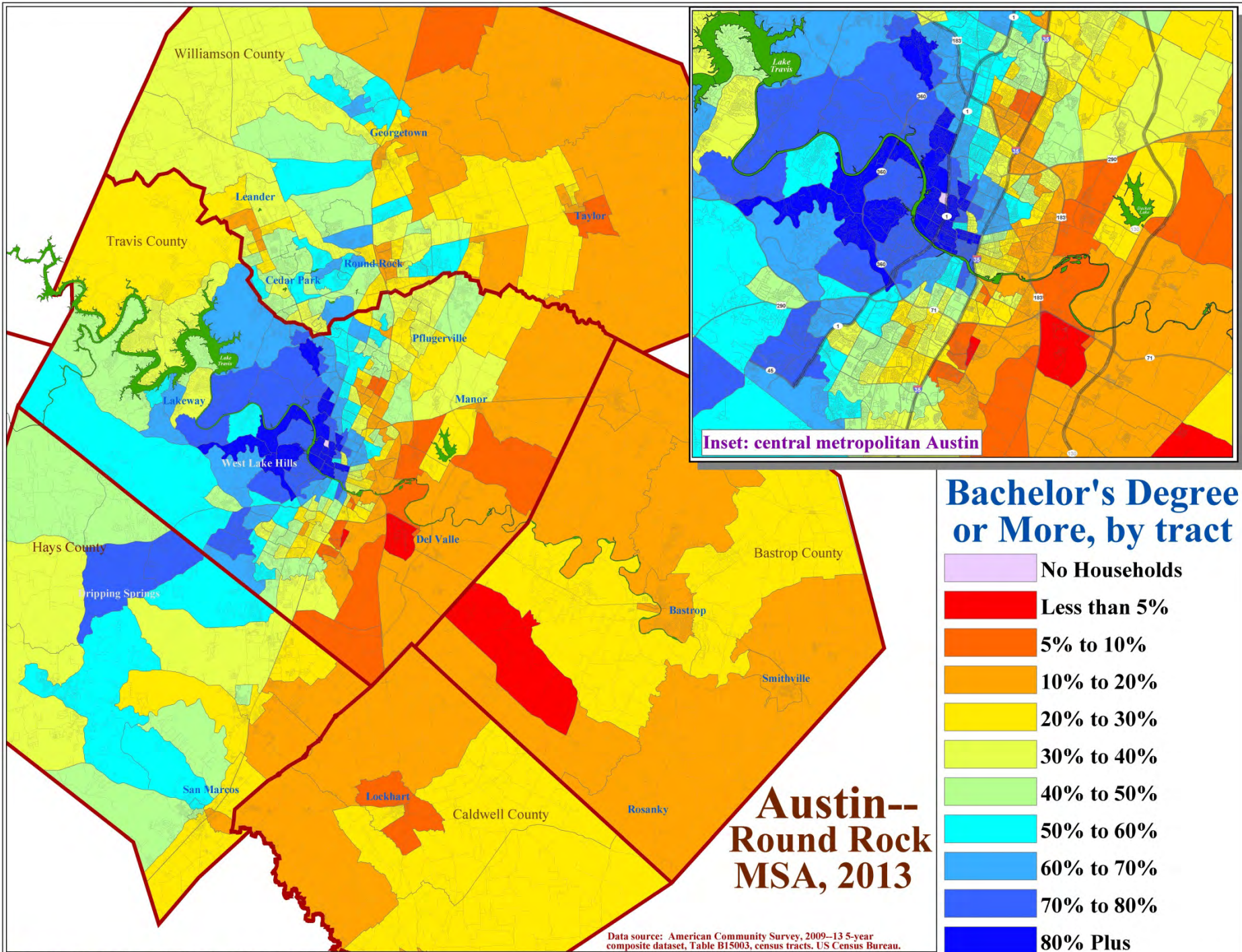


Top 30 Largest Cities in the US: 2013



Educational Attainment, Top 30 Metros, 2013: percentage of age 25 Plus with at least a Bachelor's







*“Traditional
gateways have
become former
gateways; new
gateways have
emerged; and*

CENTER ON URBAN AND METROPOLITAN POLICY

The Rise of New Immigrant Gateways

Audrey Singer

Findings

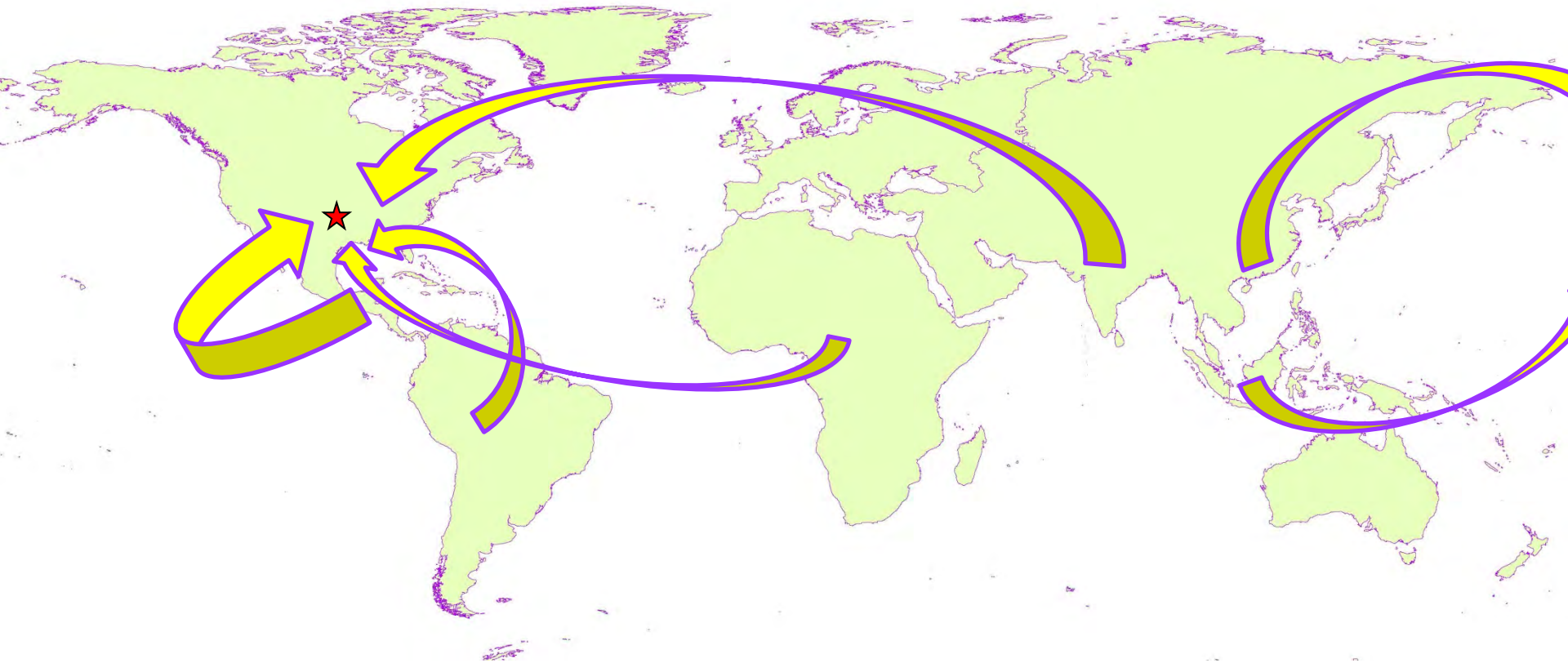
An analysis of immigration to metropolitan areas during the 20th century using U.S. Census data reveals that:

- The U.S. foreign-born population grew 57.4 percent in the 1990s; by 2000 nearly one-third of U.S. immigrants resided outside established settlement states. Thirteen states primarily in the West and Southeast—including many that had not previously been major destinations for immigrants—saw foreign-born growth rates more than double the national average. These states included, Colorado, Georgia, Nevada, and North Carolina.
- Historical settlement patterns along with recent influxes of immigrants have produced six major types of U.S. immigrant “gateways.” *Former gateways*, like Cleveland and Buffalo, attracted immigrants in the early 1900s but no longer do. *Continuous gateways* such as New York and Chicago are long-established destinations for immigrants and continue to receive large numbers of the foreign-born. *Post-World War II gateways* like Los Angeles and Miami began attracting immigrants on a grand scale during the past 50 years. Atlanta, Dallas, and Washington, D.C., meanwhile, stand out as *emerging gateways* with fast immigrant growth during the past 20 years. Seattle and the Twin Cities—places that began the

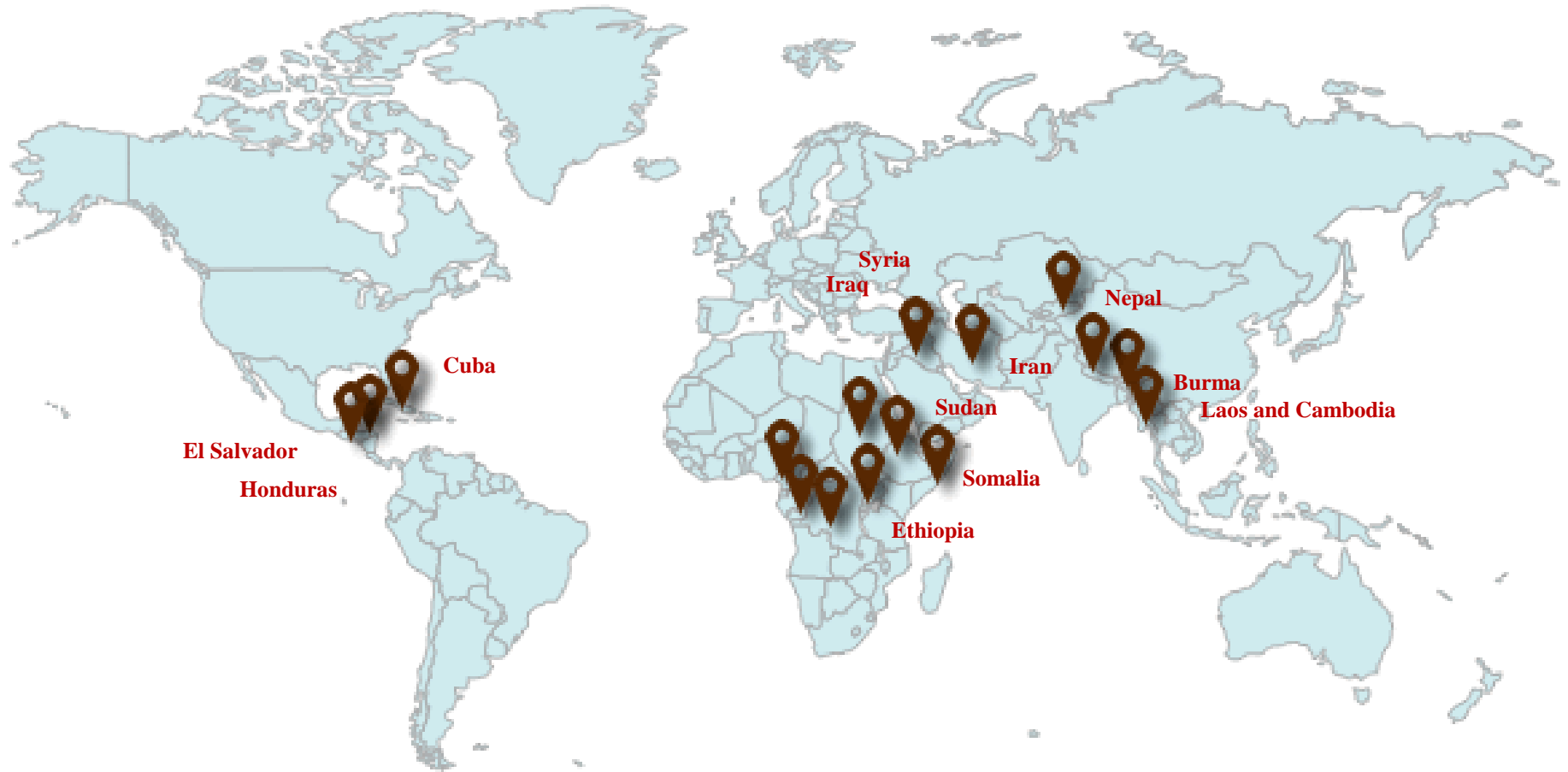
Table 1. Six Immigrant Gateway Types, Metropolitan Areas, 2000

Former	Continuous	Post-World War II	Emerging	Re-Emerging	Pre-Emerging
Baltimore	Bergen-Passaic	Fort Lauderdale	Atlanta	Denver	Austin
Buffalo	Boston	Houston	Dallas	Minneapolis-St. Paul	Charlotte
Cleveland	Chicago	Los Angeles	Fort Worth	Oakland	Greensboro-
Detroit	Jersey City	Miami	Las Vegas	Phoenix	Winston-Salem
Milwaukee	Middlesex-Somerset-	Orange County	Orlando	Portland, OR	Raleigh-Durham
Philadelphia	Hunterdon	Riverside-	Washington, D.C.	Sacramento	Salt Lake City
Pittsburgh	Nassau-Suffolk	San Bernardino	West Palm Beach	San Jose	
St. Louis	New York	San Diego		Seattle	
	Newark			Tampa	
	San Francisco				

Incoming Streams of International Immigrants

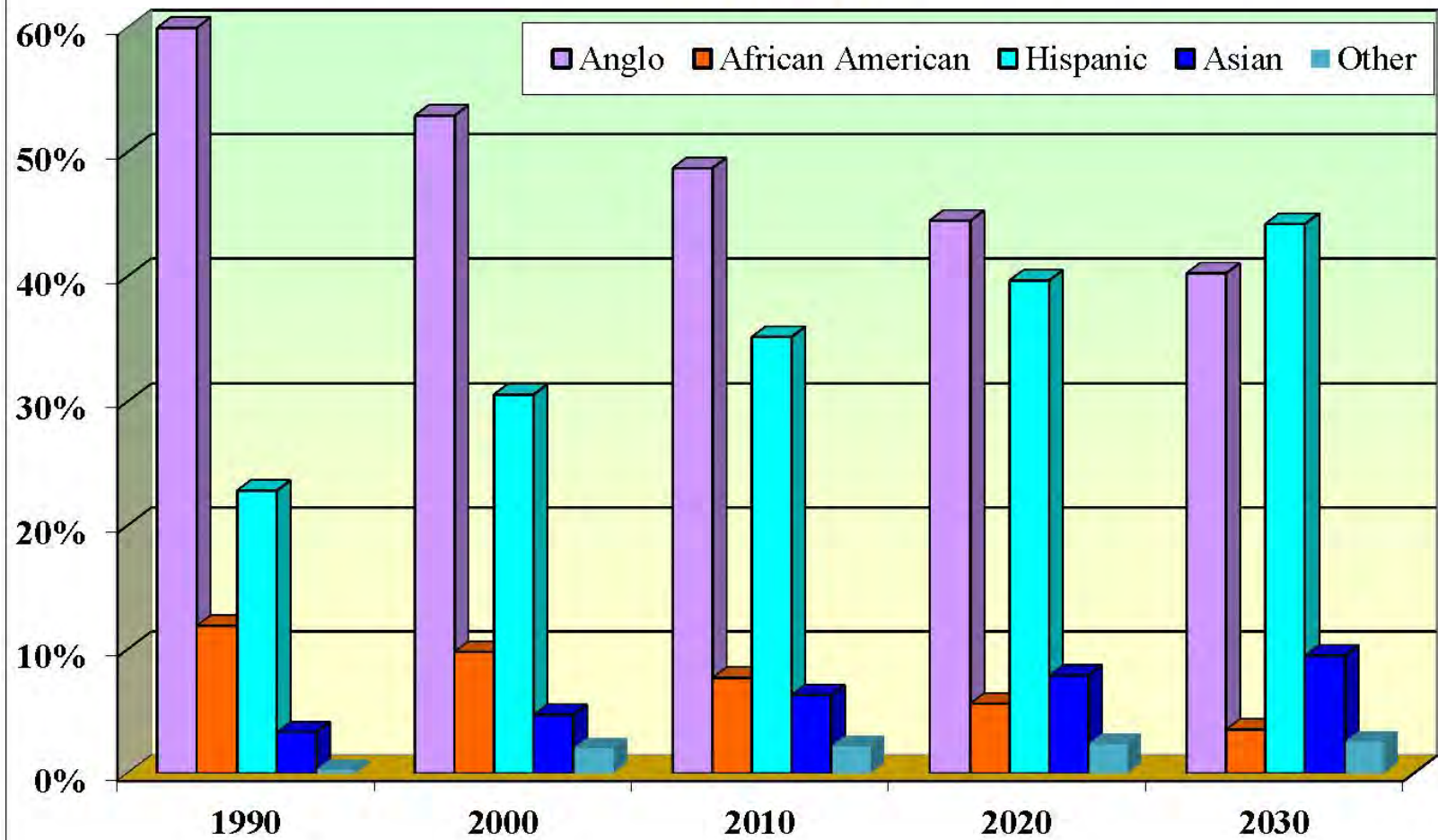


Current Sources of Refugees Into Austin, 2014

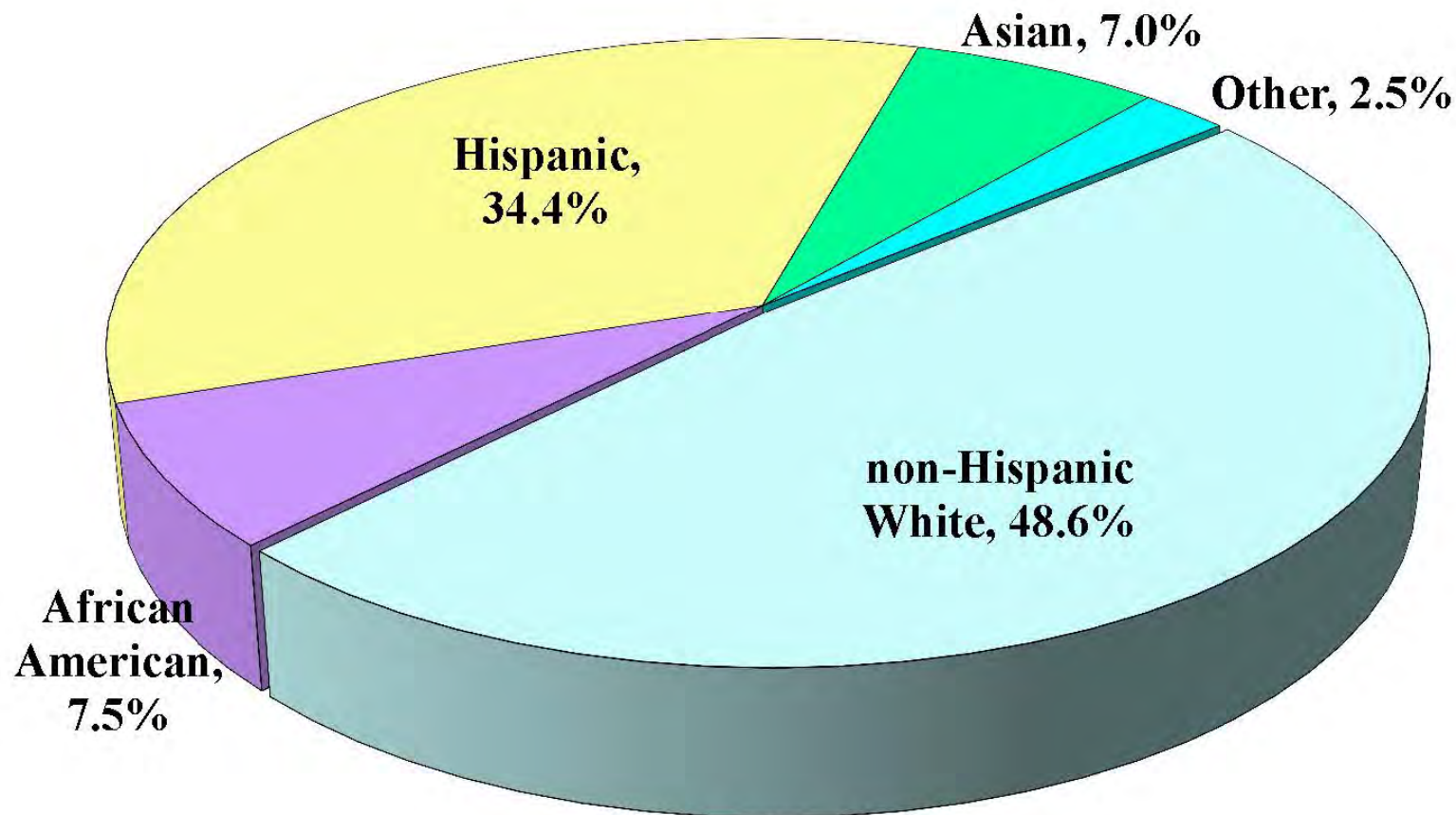


SOURCE: CARITAS, 2014

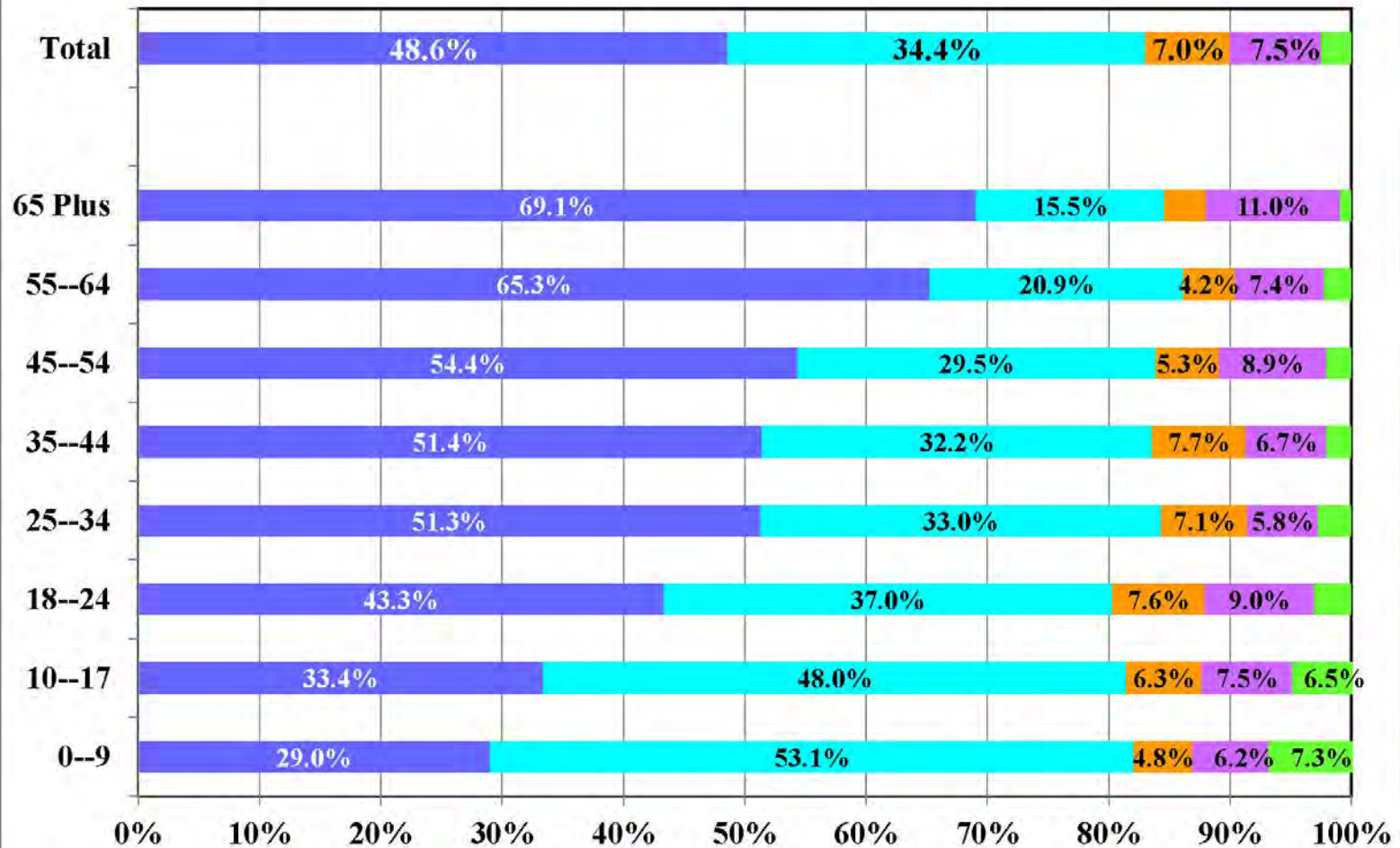
City of Austin Racial and Ethnicity Shares History and Forecast: 1990 to 2030



Racial and Ethnic Mix, City of Austin, 2014 ACS Census Estimates



Age Structure by Race and Ethnicity, City of Austin, 2014 Estimates



Source: American Community Survey,
2013 1-year datasets, Table B01001,
updated with estimates from the City
Demographer.

■ White
 ■ Hispanic
 ■ Asian
 ■ African American
 ■ Multi/Other

Poverty Rates by Age Group, Race and Ethnicity

City of Austin

American Community Survey, 2014, 1-year Estimates Series, Table B17001

Table I: Poverty Rates (1)

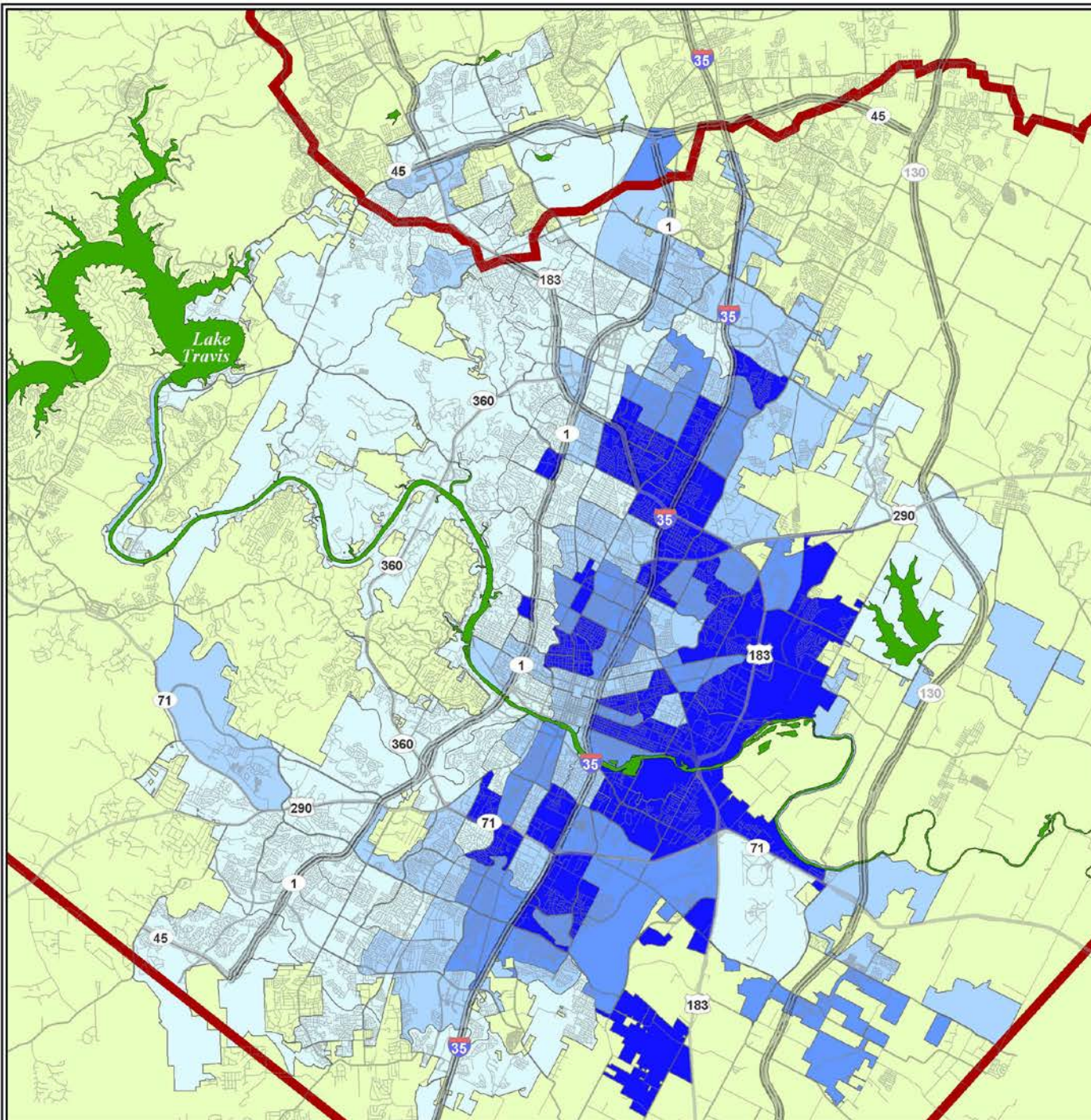
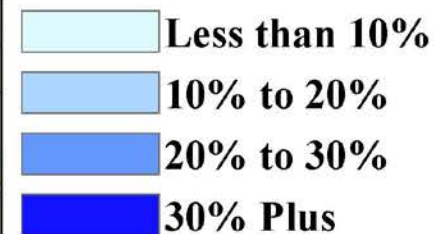
Category or Group	Overall Population	non-Hispanic White	African American	Hispanic	Asian
Overall Population	18.5%	10.5%	27.7%	28.4%	16.9%
Under Age 5	29.1%	8.4%	50.9%	42.6%	20.9%
Under Age 18	26.8%	6.1%	43.3%	40.4%	13.3%
Age 65 Plus	8.5%	5.2%	16.8%	17.1%	7.4%

NOTES:

(1) The source for data behind this table on Poverty in the City of Austin is the American Community Survey, which is produced by the US Census Bureau. Data for this table are from the 2014 1-year Estimates Series. Poverty rates are calculated for only the portion of the total population that lives within a household, poverty rates are not calculated for institutionalized persons or individuals living within Group Quarters situations. The Poverty Rate is a function of total annual household income and the number of individuals within a household. The 2014 Poverty threshold for a family of four was \$23,850.

City of Austin 2014 Data

Poverty Rates by census tract



Data source: American Community Survey,
2010--14 5-year composite dataset,
Table B17001, census tracts.
US Census Bureau.

Median Family Income

Austin, 2014 data

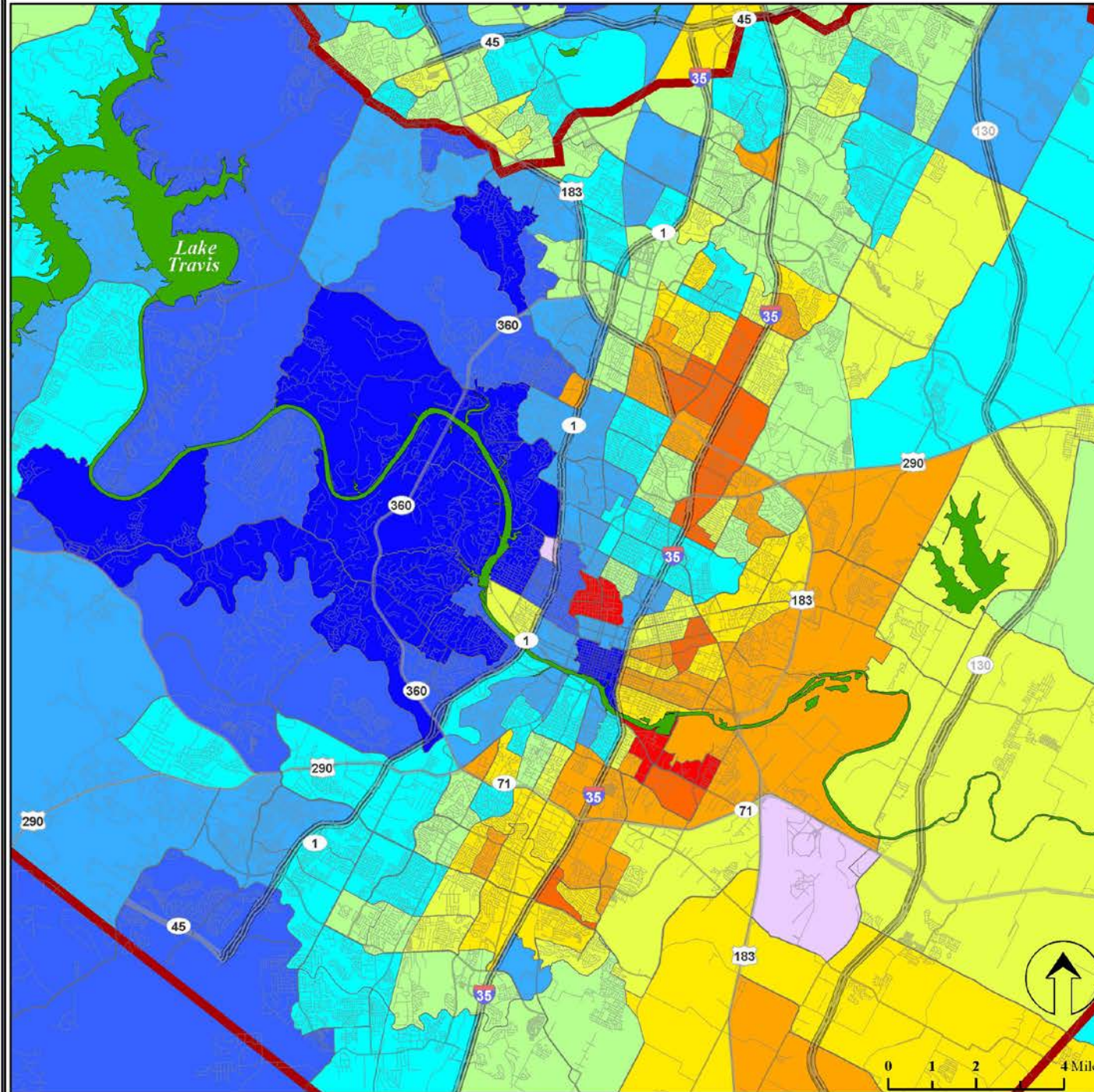
Income Bracket



City of
Austin



Data source: American Community Survey, 2010–14 5-year composite dataset, Table B19113, census tracts, US Census Bureau.
Map produced by Ryan Robinson, City Demographer, Department of Planning, City of Austin, January 2016.



The background image is a photograph of a park scene. In the foreground, several people are exercising: a person is riding a bicycle on the left, and a group of people is jogging on the right. In the middle ground, there is a river or lake. In the background, a city skyline with several tall buildings is visible under a clear sky. The overall scene is bright and sunny.

Structural Descriptions and Trends

The Asian Community in Austin: a Demographic Snapshot

Ryan Robinson
City Demographer
City of Austin

Structural Descriptions and Trends

- ❑ Asians in Austin are the fastest growing local demographic group in terms of percentage gain year-to-year and are doubling in total size roughly every 12 years.
- ❑ The City of Austin's Asian share of total population is now above 7.0% and climbing rapidly—putting Austin in the 9th position out of the nation's largest 30 cities in terms of their Asian shares—ahead of Houston and right behind Portland.
- ❑ Austin's Asian community is the fastest growing Asian community of any of the nation's largest 30 cities--which speaks to the overall newness of the community in central Texas.

The Asian Community in Austin: a Demographic Snapshot

Ryan Robinson
City Demographer
City of Austin



Structural Descriptions and Trends

- ❑ The City of Austin's Asian share of total population will soon surpass the City's African American share of total population and Asians will become the City's third largest demographic group behind Latinos and non-Hispanic Whites.
- ❑ Austin's Asian community is highly diverse with significant subgroup shares coming from Indians, Chinese, Vietnamese, Koreans and Filipinos.
- ❑ At \$101,699 annually, Asian families in Austin have the highest Median Family Income (MFI) of any demographic group in the City. This figure is substantially higher than the City's overall MFI and ranks 3rd highest out of the nation's largest 30 cities in terms of Asian MFI.

The Asian Community in Austin: a Demographic Snapshot

Ryan Robinson
City Demographer
City of Austin



The Asian Advantage

[点击查看本文中文版](#) | [Read in Chinese](#)

[한국어로 읽기](#) | [Read in Korean](#)



Nicholas Kristof OCT. 10, 2015



“This is an awkward question, but here goes:
Why are Asian-Americans so successful in America?”

Asian Americans speak out against a decades-old ‘model minority’ myth

A



78



Save for Later



Reading List

By Yanan Wang | October 20, 2015



(iStock)

A [column](#) published over a week ago in the New York Times began with what the writer calls “an awkward question”: “Why are Asian Americans so

MONDAY, OCT 12, 2015 03:22 PM CDT

Nicholas Kristof thinks all Asian Americans are alike: The New York Times gets the “Asian Advantage” all wrong

The “bamboo ceiling” is real — and model minority myths only undermine meaningful change

KHIN MAI AUNG AND RUSSELL CHUN



839



0



19

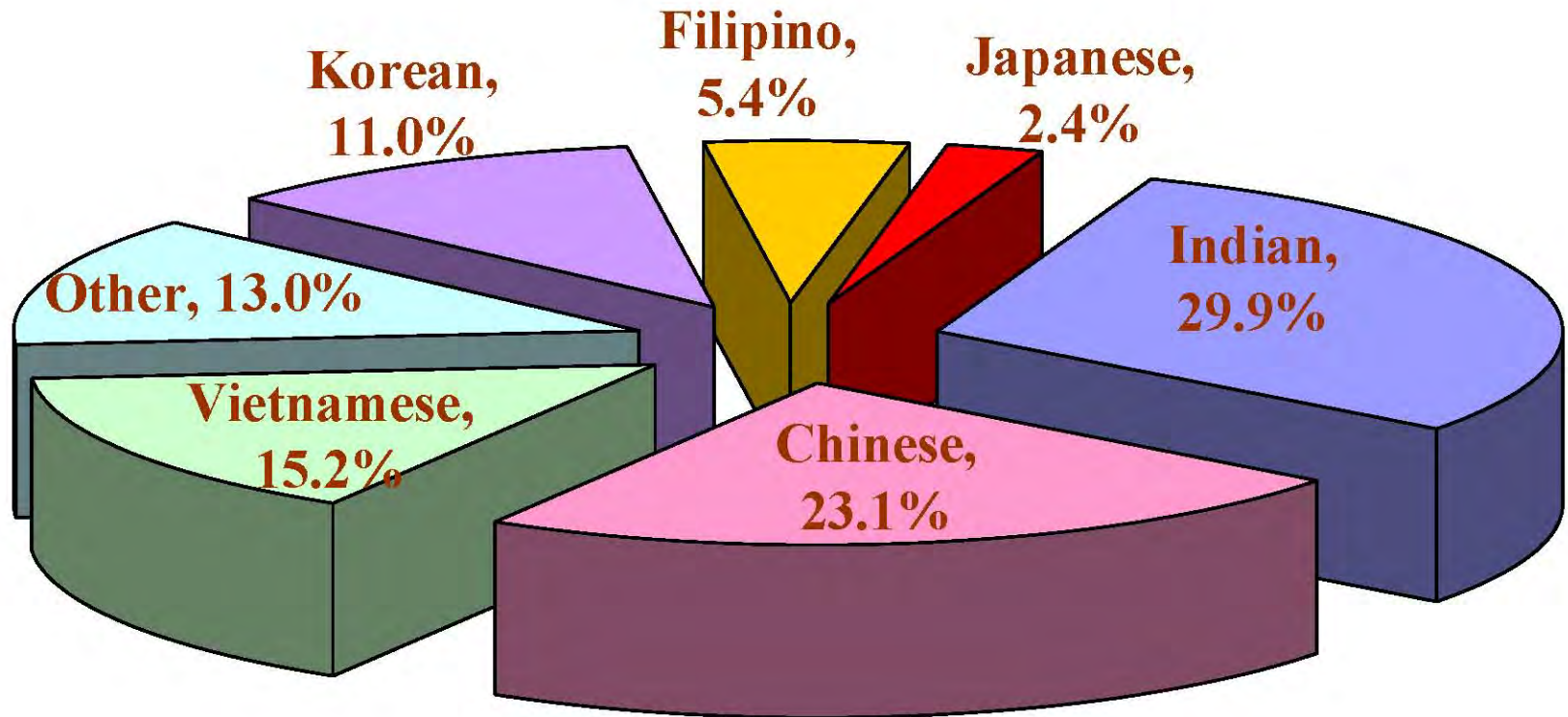


TOPICS: ASIAN AMERICANS, DIVERSITY, RACISM, NEW YORK TIMES, NICHOLS KRISTOF, MEDIA NEWS, LIFE NEWS,

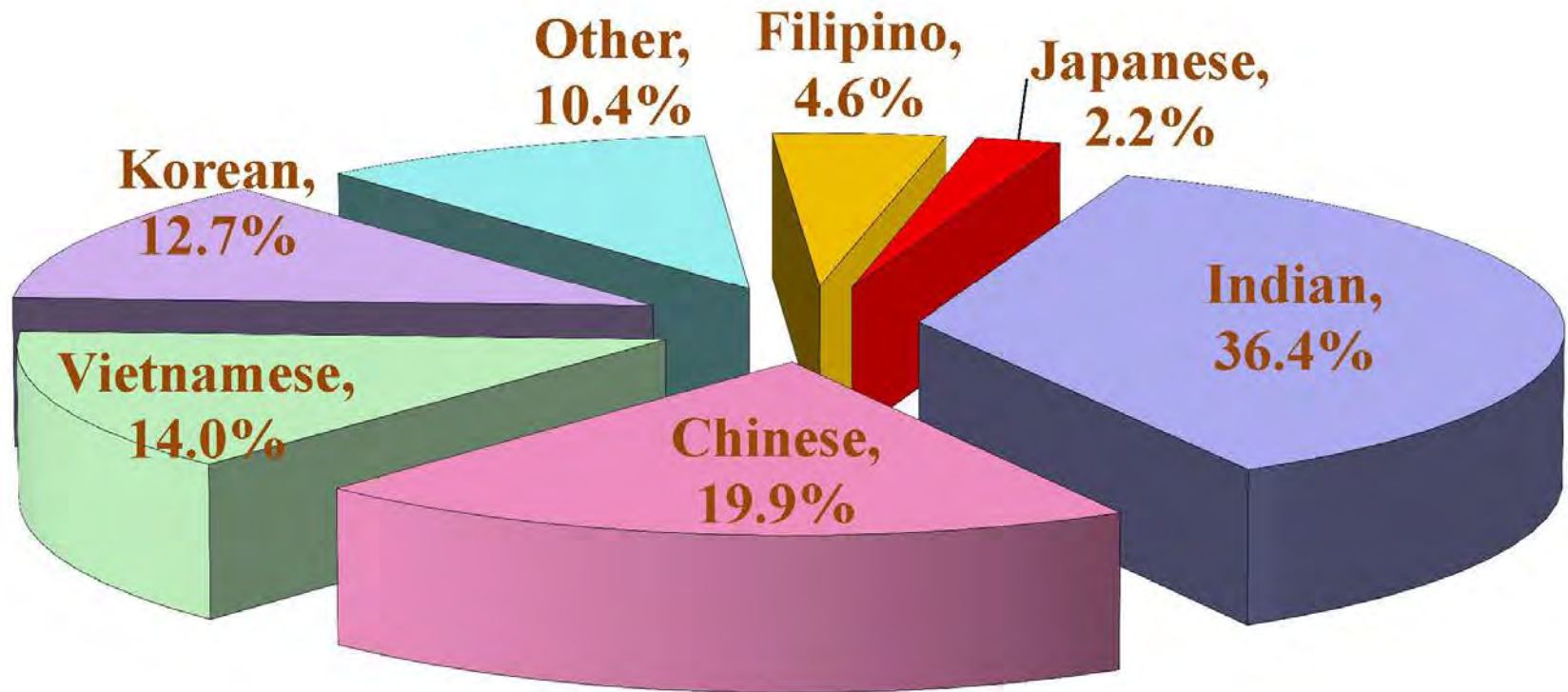
ENTERTAINMENT NEWS



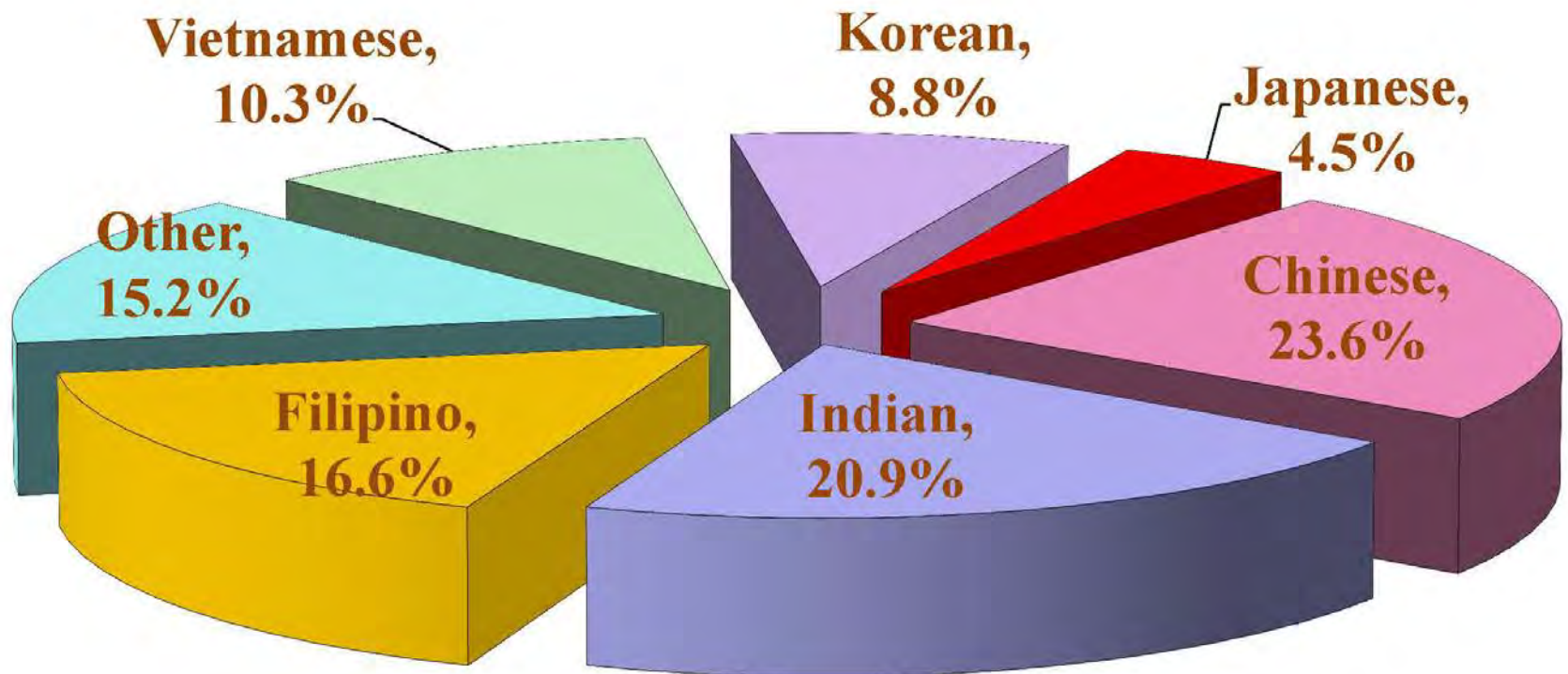
Breakout of Asians in Austin, Census 2010



Breakout of Asians in Austin, ACS 2014 data



Breakout of Asians in the US, ACS 2014 data



A background image showing a park scene with a river, a city skyline in the distance, and several people exercising. One person is standing on the left, while others are riding bicycles and jogging on a path in the foreground.

Spatial Descriptions and Trends

The Asian Community in Austin: a Demographic Snapshot

Ryan Robinson
City Demographer
City of Austin

Spatial Descriptions

- 1. Asian households in Austin are becoming increasingly suburban.**
- 2. Distinctive housing patterns between various Asian communities are emerging.**
- 3. Although not explicitly an Asian opportunity District, City Council District 6 had the greatest Asian share of total in 2010 (about 14%) and this share has surely grown...**

The Asian Community in Austin: a Demographic Snapshot

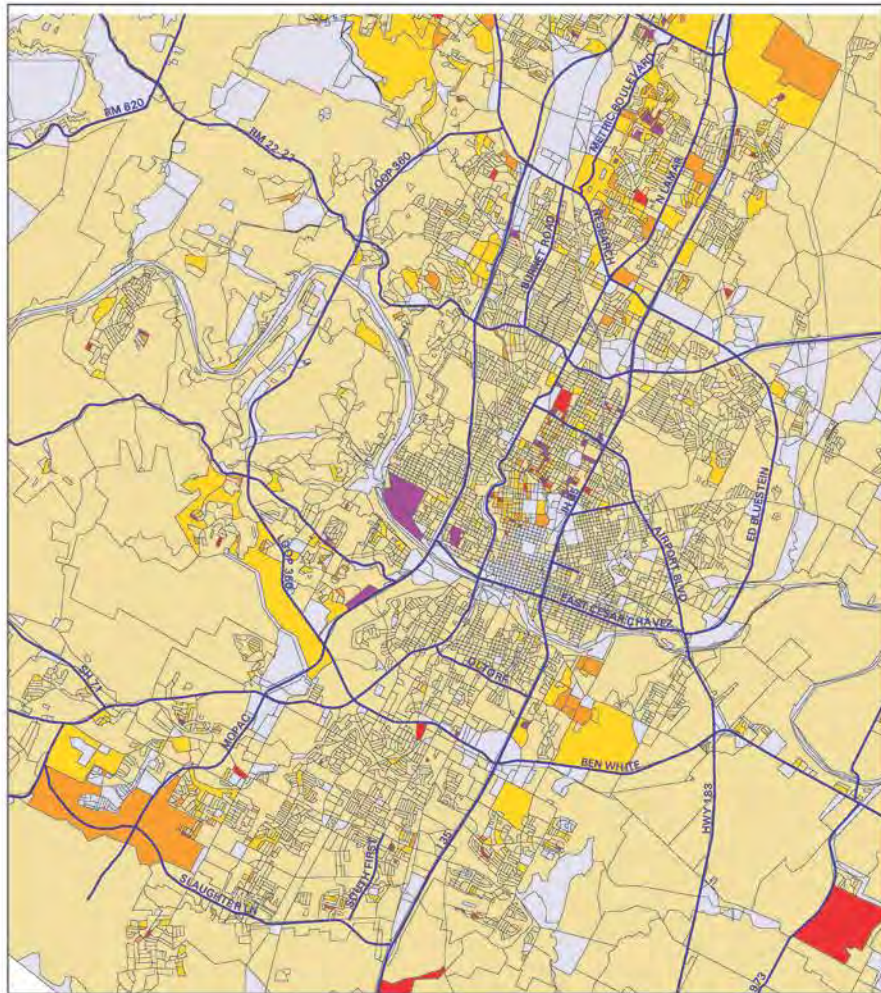
Ryan Robinson
City Demographer
City of Austin



Changing Asian Landscape

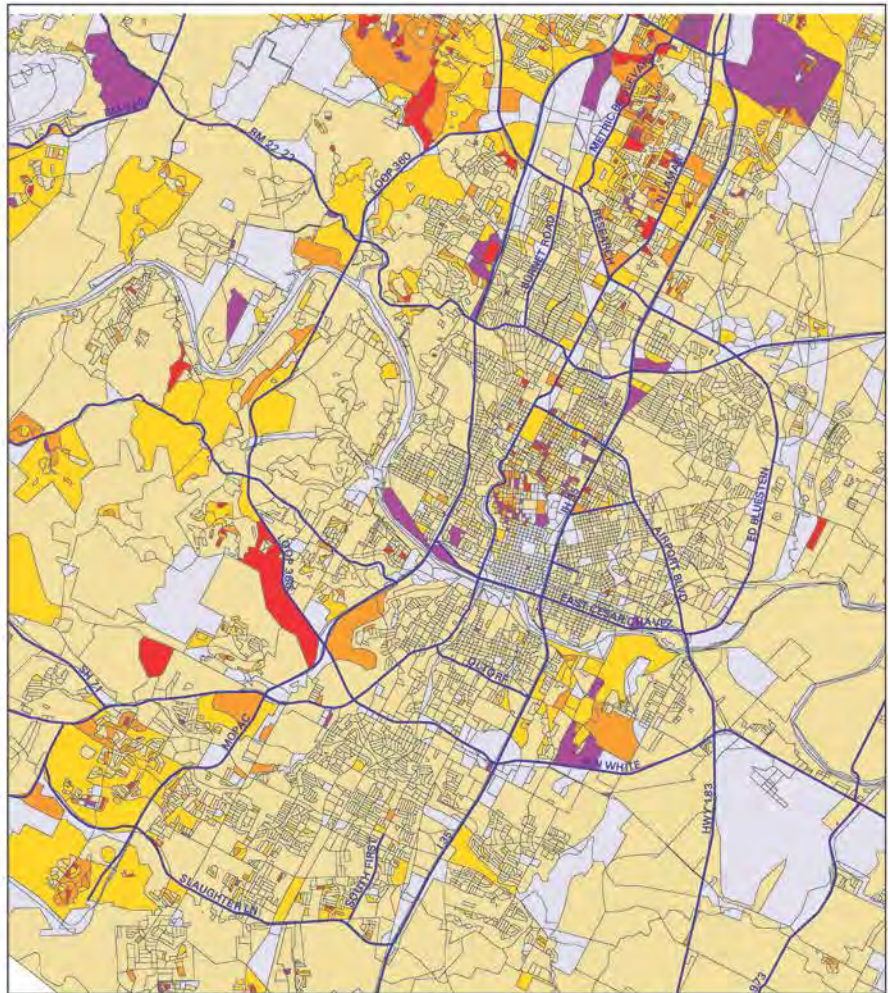
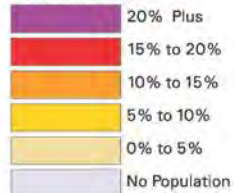
Asian Population Concentrations, 1990 and 2000.

Austin, Texas. 1990 Census and Census 2000 Data.



1990 Population

Percent Asian



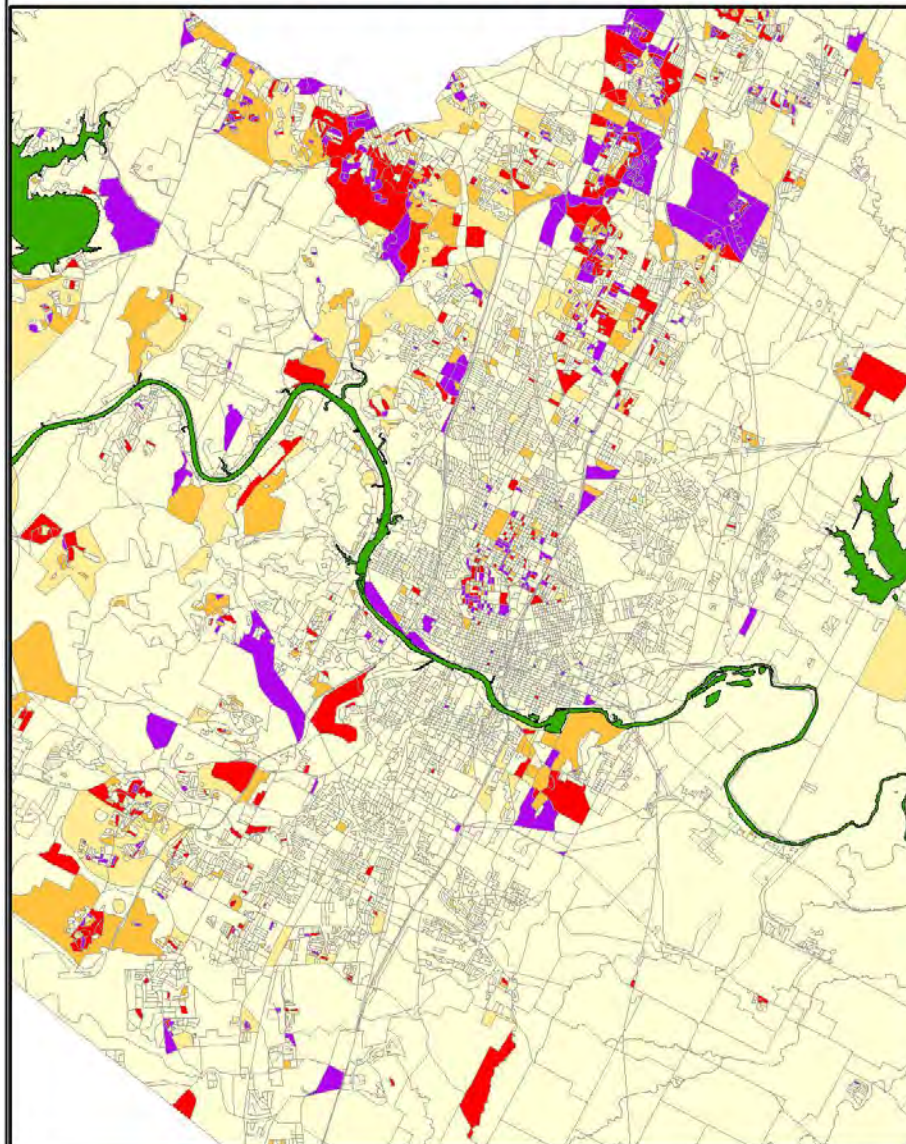
2000 Population

Percent Asian



Changing Asian Landscape--Travis County

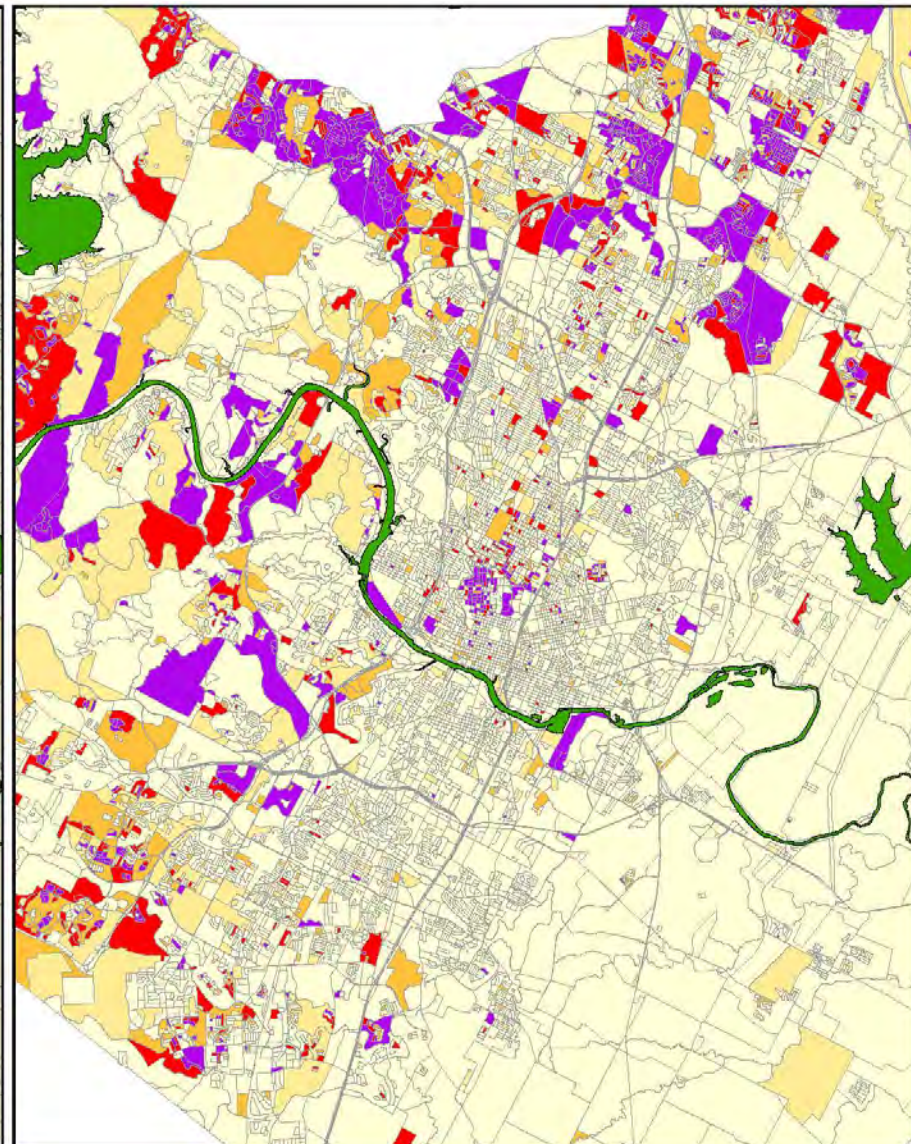
Asian Population Concentrations, 2000 and 2010



Census 2000 Data
Census Blocks

Percentage of the
Total Population
that is
Asian

Less than 5%
5% to 7.5%
7.5% to 10%
10% to 15%
15% Plus



Census 2010 Data
Census Blocks

Percentage of the
Total Population
that is
Asian

Less than 5%
5% to 7.5%
7.5% to 10%
10% to 15%
15% Plus

Change in the Asian Percentage of Total Population 2000 to 2010

Travis County

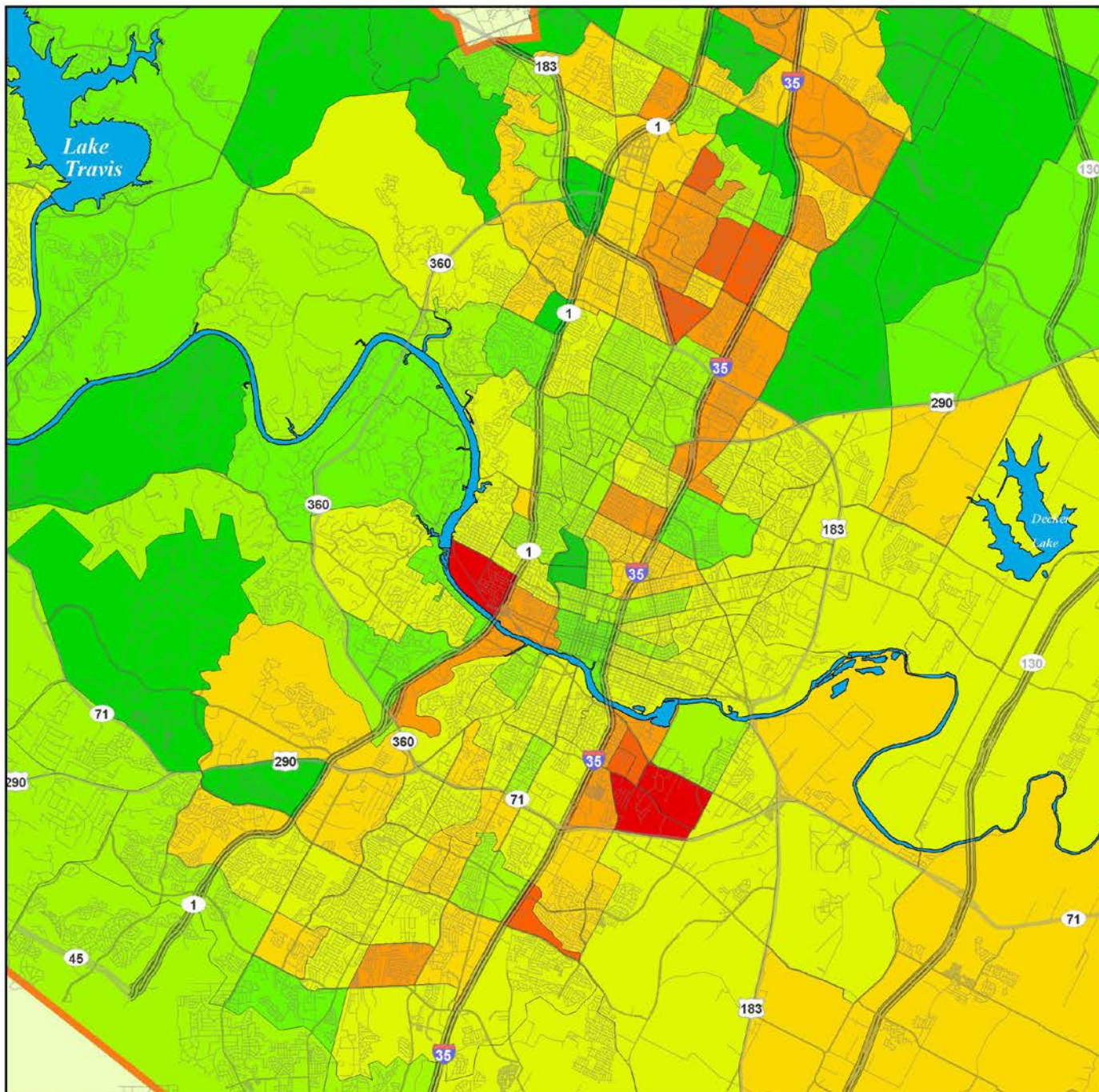
Decennial data from the US Census Bureau

Change in a Census Tract's Percentage of Total Population that is Asian from 2000 to 2010 at the 2000 tract-level

Example: 50% in 2000, 59% in 2010 = 9 Point Gain

Point Gain or Loss

- 5 Points Plus
- 3 to 5 Points
- 1 to 3 Points
- 0 to 1 Points
- 1 to 0 Points
- 3 to -1 Points
- 5 to -3 Points
- 5 Points Plus

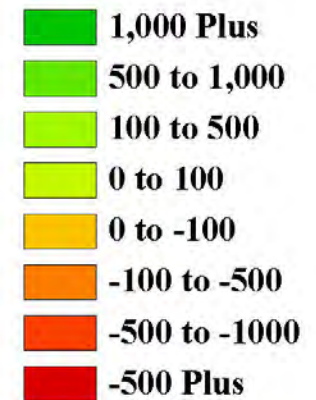
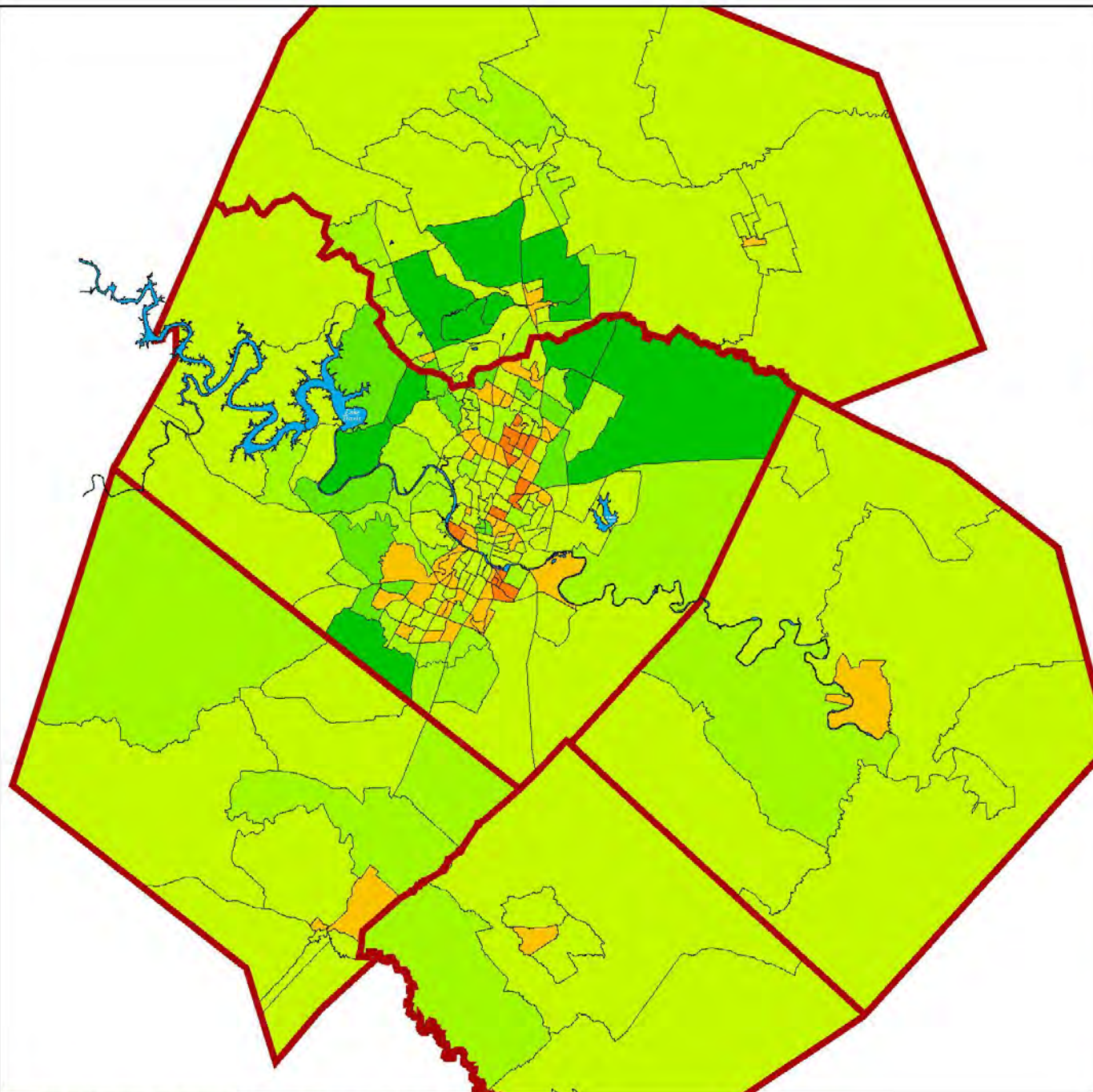


Asian Population Growth and Decline: 2000 to 2010

**Austin--Round Rock
MSA**

**Decennial data from
the US Census Bureau**

**Change in a Census
Tract's Total Asian
American Population
from 2000 to 2010
at the 2000 tract-level**



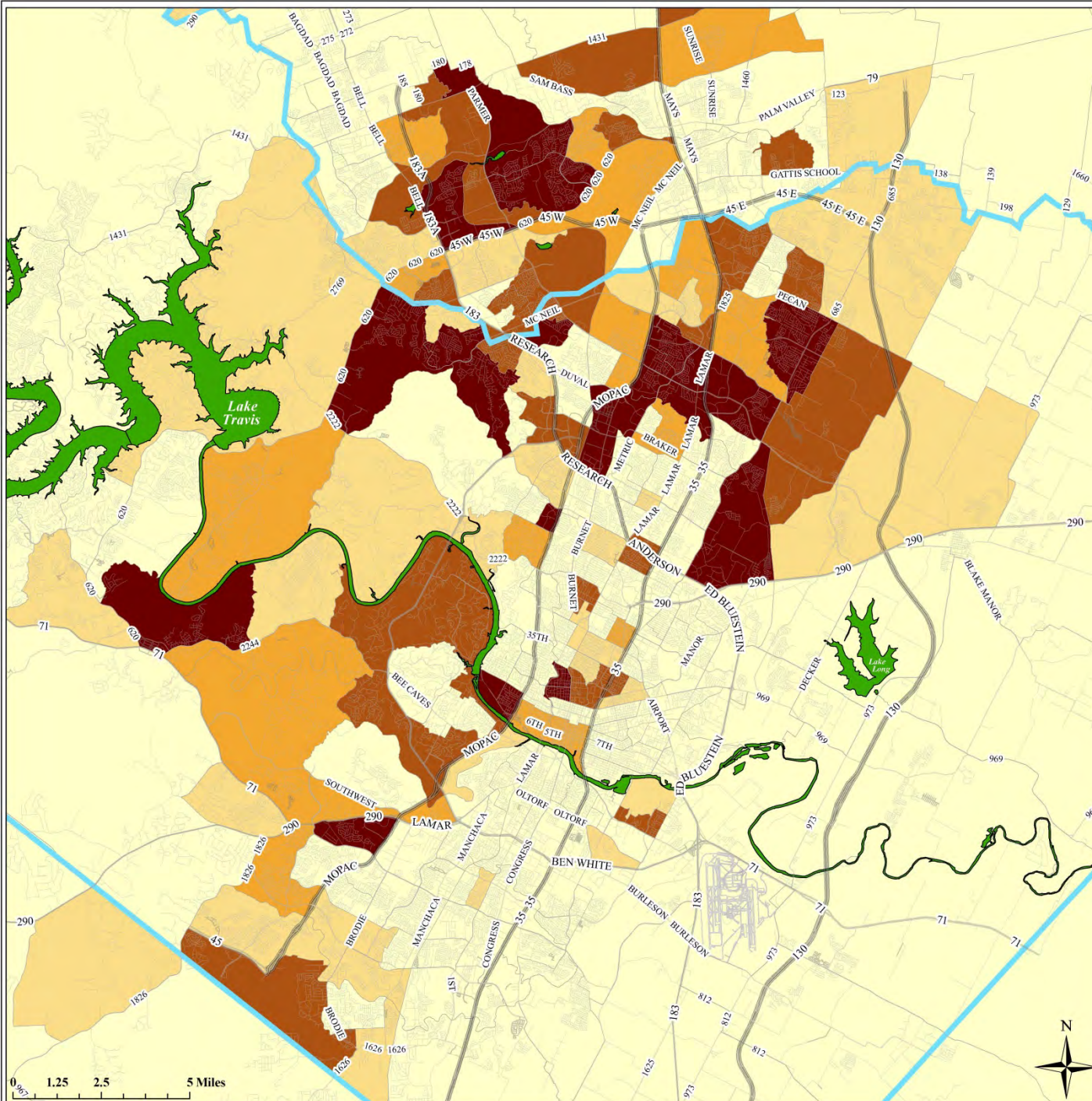
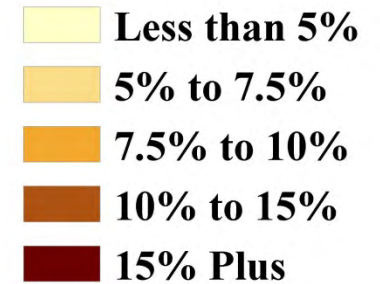
Asian Population Share of Total Population

Austin, Texas

ACS 2014 Data

Table B03002, census tracts

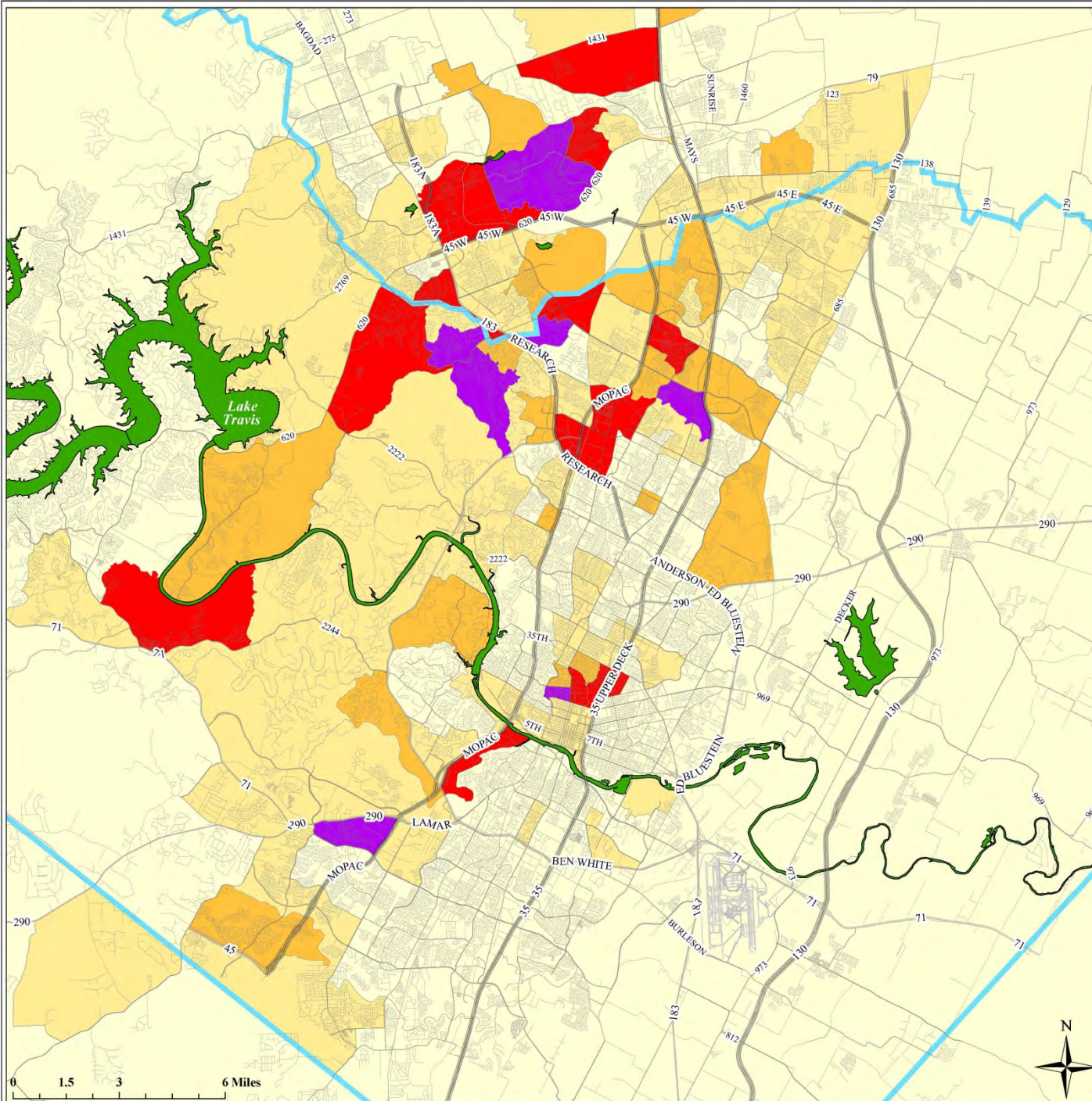
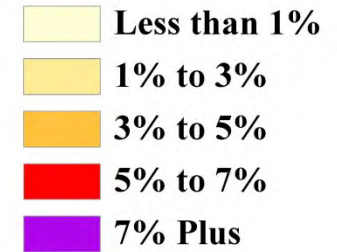
Percentage of
Total Population
that is Asian



Asian Indian Share of Total Population






Austin, Texas
Census 2010 Data

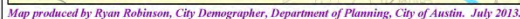
Percentage of
Total Population
that is Asian Indian



Austin, Texas Census 2010 Data

Census 2010 Data

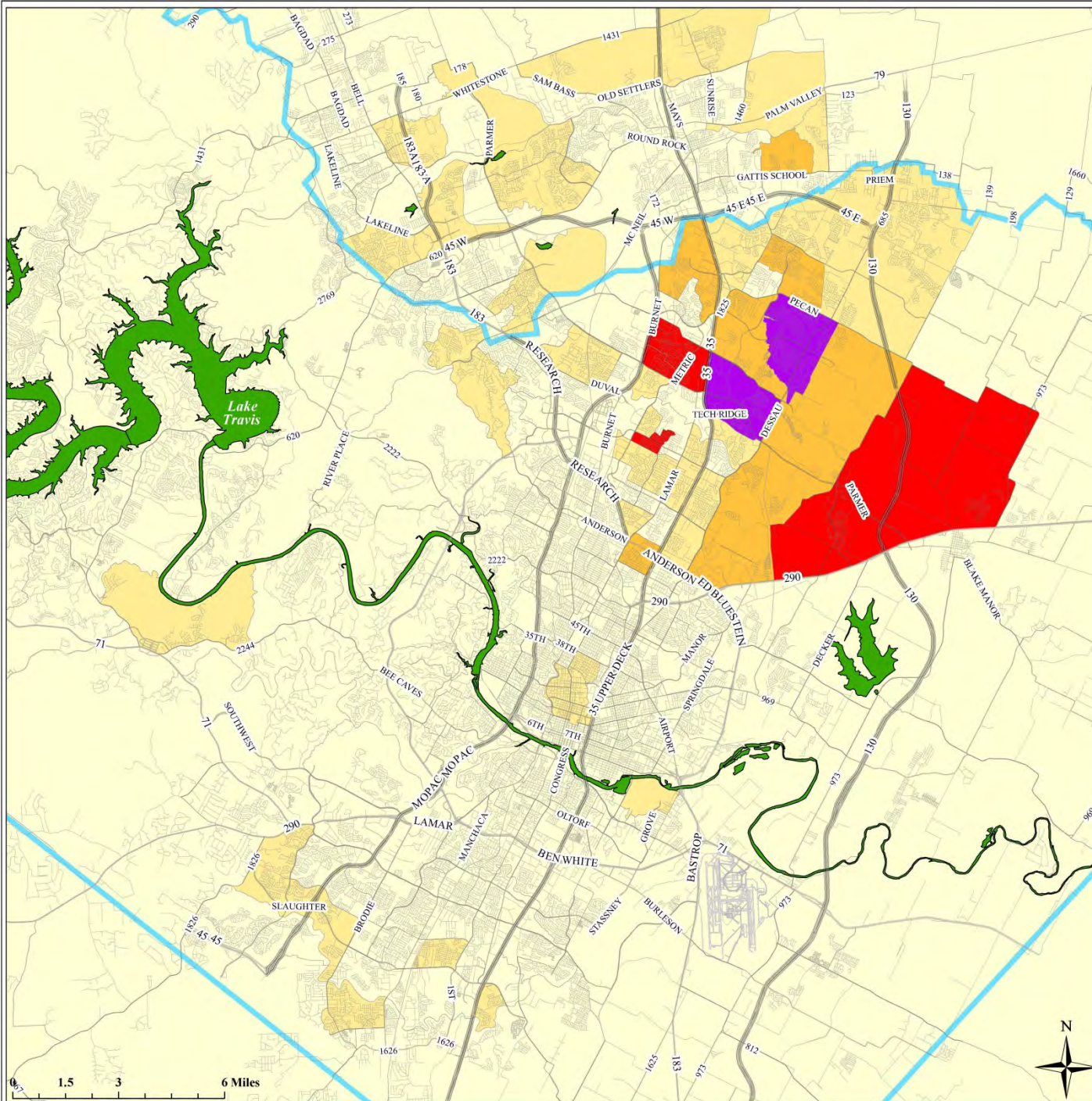
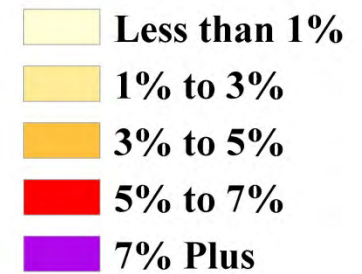
	Less than 1%
	1% to 3%
	3% to 5%
	5% to 7%
	7% Plus



Vietnamese Share of Total Population

Austin, Texas
Census 2010 Data

Percentage of
Total Population
that is Vietnamese





Data Indicators

The Asian Community in Austin: a Demographic Snapshot

Ryan Robinson
City Demographer
City of Austin

Asian Quality of Life Data Indicators

An Analysis of Quality of Life Demographic Data Indicators for Austin's Asian Community

Data Theme figures are compared and benchmarked against the state of Texas, the nation, and the 30 biggest cities in the country.

Green indicates Ranking is Positive
Orange indicates Ranking is Negative
Yellow indicates Ranking is Neutral

Issue--Data Theme	Current Situation Compared with Other Communities	Peer Ranking	Level of Local Disparity and Comparison to Disparities in Other Communities	Depth of Disparity Ranking	Trend and Outlook
Racial--Ethnicity Shares <small>Source: 2014 ACS 1-year, Census Bureau</small>	Austin's Asian community is experiencing explosive growth--its share of the City's total population ascending over 7% and is now the 9th largest concentration of Asians in the nation and the 10th largest in terms of total size.	9th	This data point won't have a Disparity factor but it is worth noting that cities without significant Asian populations tend to economic and cultural laggards and in Austin's case our large Asian community sets us apart from most other cities in the southwest.	na	Austin's Asian share of total population will surely continue to increase as the volumes of in-migration for Asian households are expected to increase nationally over the next few decades--Austin will capture much of this growth.
Family Income <small>Source: 2014 ACS 1-year, Census Bureau</small>	Asian families in Austin enjoy one of the highest Median Family Incomes (MFI) in the nation (\$102K--ranking 3rd) when compared to Asian families in other cities across the country, even higher than Seattle but behind Wash DC and San Jose.	3rd	Asian MFI in Austin towers above overall MFI, \$102K versus \$76K, and this inverted disparity ranks 23rd in the nation in terms of differential magnitude. Within most (24 out of 32) of the comparative observations, Asian MFI is higher than overall MFI.	23rd	The long-term trend for Asian wealth and affluence in Austin could be affected as a more diverse and less well-educated tier of new Asian immigrants and domestic arrivals begin changing the character of Austin's current Asian community.
Educational Attainment <small>Source: 2014 ACS 1-year, Census Bureau</small>	The collective Asian community in Austin is one of the most well-educated Asian communities in the entire country with 74.5% of Asians age 25 plus having at least a Bachelor's degree. A critical mass of professional-class labor has emerged.	2nd	The educational attainment level for adult Asians in Austin is significantly higher than that of the overall population (74.5% versus 47.6%) and thus an inverted disparity exists but the City as a whole ranks 4th nationally in terms of educational attainment.	16th	Austin should continue to receive an influx of well-educated Asian households and yet as Austin matures as an international port of entry the overall socio-economic levels of Asians in Austin could fall as a more diverse galaxy of Asian households arrive.
Home Ownership <small>Source: 2014 ACS 1-year, Census Bureau</small>	Austin has one of the lowest rates of home ownership in the nation, ranking 23rd in the set of comparables--accordingly, Asian households rank 19th when compared to other Asian communities in terms of their rates of home ownership.	19th	Although Asian households in Austin fall within the bottom half of comparable data points in terms with a home ownership rate of 45.8%, that rate still exceeds the overall rate of home ownership of 44.7% for the entire City.	20th	Home ownership in Austin will more than likely only become more difficult as overall housing affordability continues to collapse across the City with dozens of formerly affordable neighborhoods now out-of-reach for the middle-class.
Poverty <small>Source: 2014 ACS 1-year, Census Bureau</small>	The poverty rate for Asians in Austin, like the poverty rate for the City as a whole, falls about in the middle of a rank ordering of benchmarkers. Austin's large concentration of college students drives overall poverty rates higher.	18th	The poverty rate for Austin's Asian community is less than that for the City as a whole and yet the Asian poverty rate is quantitatively pulled upwards by the concentration of Asian college students in the City--the rate influenced by these lower income households.	18th	The long-term trend is somewhat unclear. Because the poverty rate is a somewhat simplistic measure calculated with only two input variables, household income and household size, it only partially reflects socio-economic dynamics.

Asian Quality of Life Data Indicators

An Analysis of Quality of Life Demographic Data Indicators for Austin's Asian Community

Data Theme figures are compared and benchmarked against the state of Texas, the nation, and the 30 biggest cities in the country.

Page Two

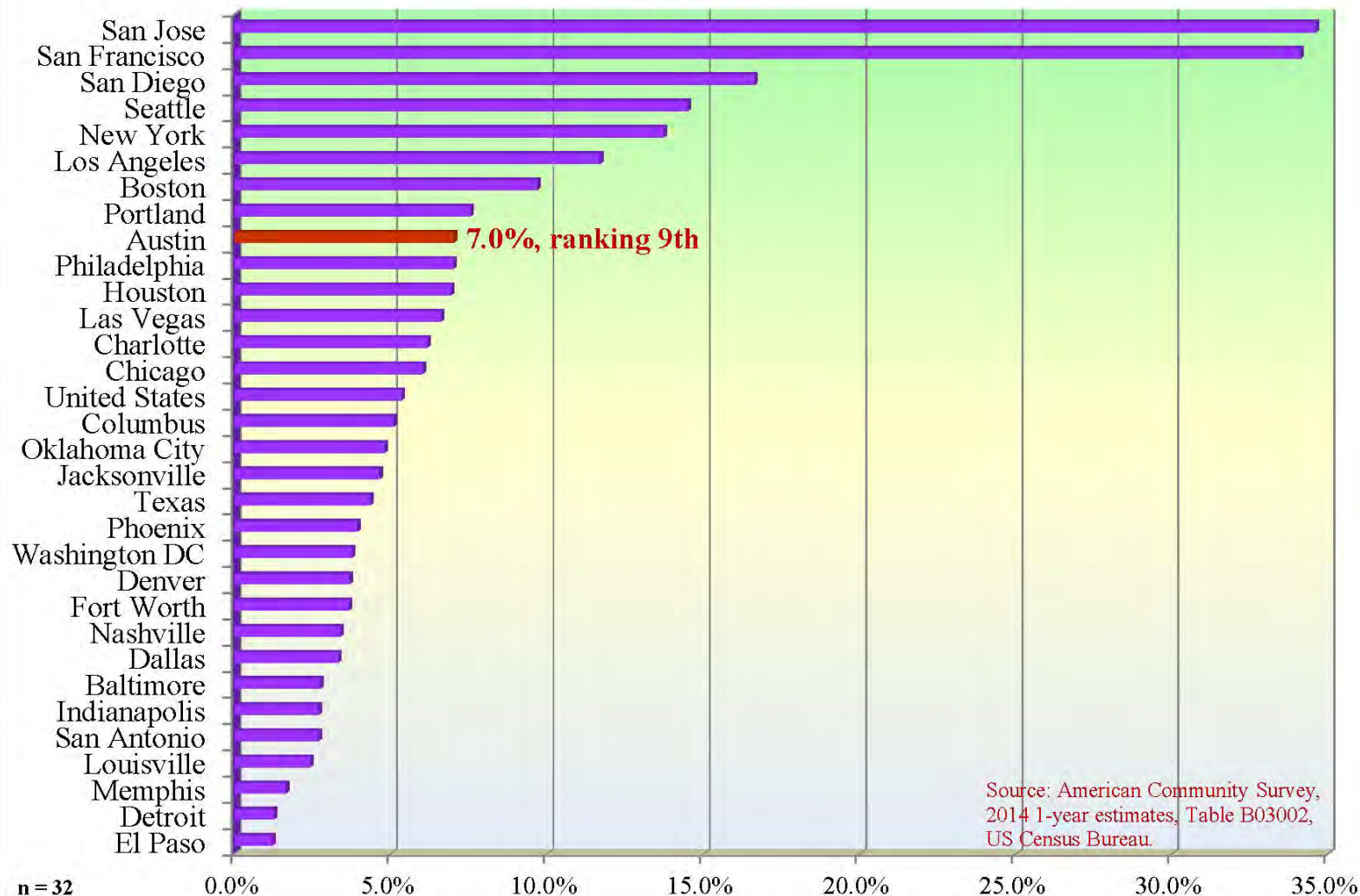
Green indicates Ranking is Positive
Orange indicates Ranking is Negative
Yellow indicates Ranking is Neutral

Issue--Data Theme	Current Situation Compared with Other Communities	Ranking	Level of Local Disparity and Comparison to Disparities in Other Communities	Disparity Ranking	Trend and Outlook
Business Ownership <small>Source: 2012 Economic Census.</small>	The rate of business ownership by Asian proprietors in Austin is truly impressive--greatly exceeding their share of total population with Vietnamese business owners having an overwhelming presence within Austin's entrepreneurial landscape.	5th	Rates of business ownership for Asians are quite healthy in most sections of the country while glaring disparities existing between rates of business ownership for Latinos and African Americans--in many cities this huge gap can often be the source of social friction.	3rd	The long-term trend is decidedly positive as Austin emerges as one of the nation's hot markets for Asian entrepreneurs, consistently ranking highly on the variety of Best Places lists published by business media and economic analysis groups.
Unemployment <small>Source: 2014 ACS 1-year, Census Bureau</small>	Austin Asians have an overall unemployment rate ranking 8th within the selection set, and yet the simple rate of unemployment can often disguise levels of under-employment that can often be a characteristic of highly educated cities.	8th	Using Census data, the difference between Austin's overall rate of unemployment and the rate for Asians is not large (5.6% vs. 6.5%) and when compared to the situation in other communities Austin ranks as 25th in the selected set.	25th	Austin's overall economy continues to be one of the strongest in the entire country with local economists hard pressed to identify what forces out there will end what has become the biggest economic and population boom of all time for Austin.
Age Structure <small>Source: 2014 ACS 1-year, Census Bureau</small>	Austin's Asian community is a relatively young one when compared to other Asian communities in other cities across the country--but this comparison breaks down locally as the Asian median age is only slightly lower than the overall median.	8th	Nationally, Austin's Asian median age of 32.6 ranks as the 8th youngest out of the set of comparables while the median for the City is 32.4 putting it in 5th position within the ranking. Austin's youthful advantage over its peers and rivals has long been a great strength.		As Austin continues to emerge as a destination for retirees, part of this growth will consist of Asian Seniors with new long-term demographic consequences in terms of resource allocation and health care issues.
Housing Patterns <small>Source: 2014 ACS 1-year, Census Bureau</small>	Although Asian households exist within almost every neighborhood across the City there are significant clusters in certain parts of the City--with the exception of the UT area and a few pockets, the distribution is decidedly northern in nature.	Please See Map 1 and Map 2	During the past 15 years the spatial distribution of Asian households in Austin has become markedly more suburban as sections of the urban core have seen a decrease in the Asian share of total population, places like greater Rundberg and east Riverside.	Please See Map 3 and Map 4	The recent trend of suburbanization will more than likely continue as Asian households are increasingly locating within suburban zones and across much of southern Williamson County and into northern Hays County.
Household Makeup <small>Source: 2014 ACS 1-year, Census Bureau</small>	An elemental characteristic of Austin's Asian community is the very low incidence of single parented households in conjunction with very low levels of out-of-wedlock births, a combination that provides economic and social stability.	9th	Asian families in Austin and elsewhere enjoy the cohesive strength that comes with multi-generational household formations. Or put another way, the presence of grandparents in the home--either year-round or at least in seasonally spurts, creates deep social strength.		Another core demographic characteristic of Asian households is the emphasis put on the importance of education and educational attainment for Asian children and the significance of academic success is highly valued within this diverse array.

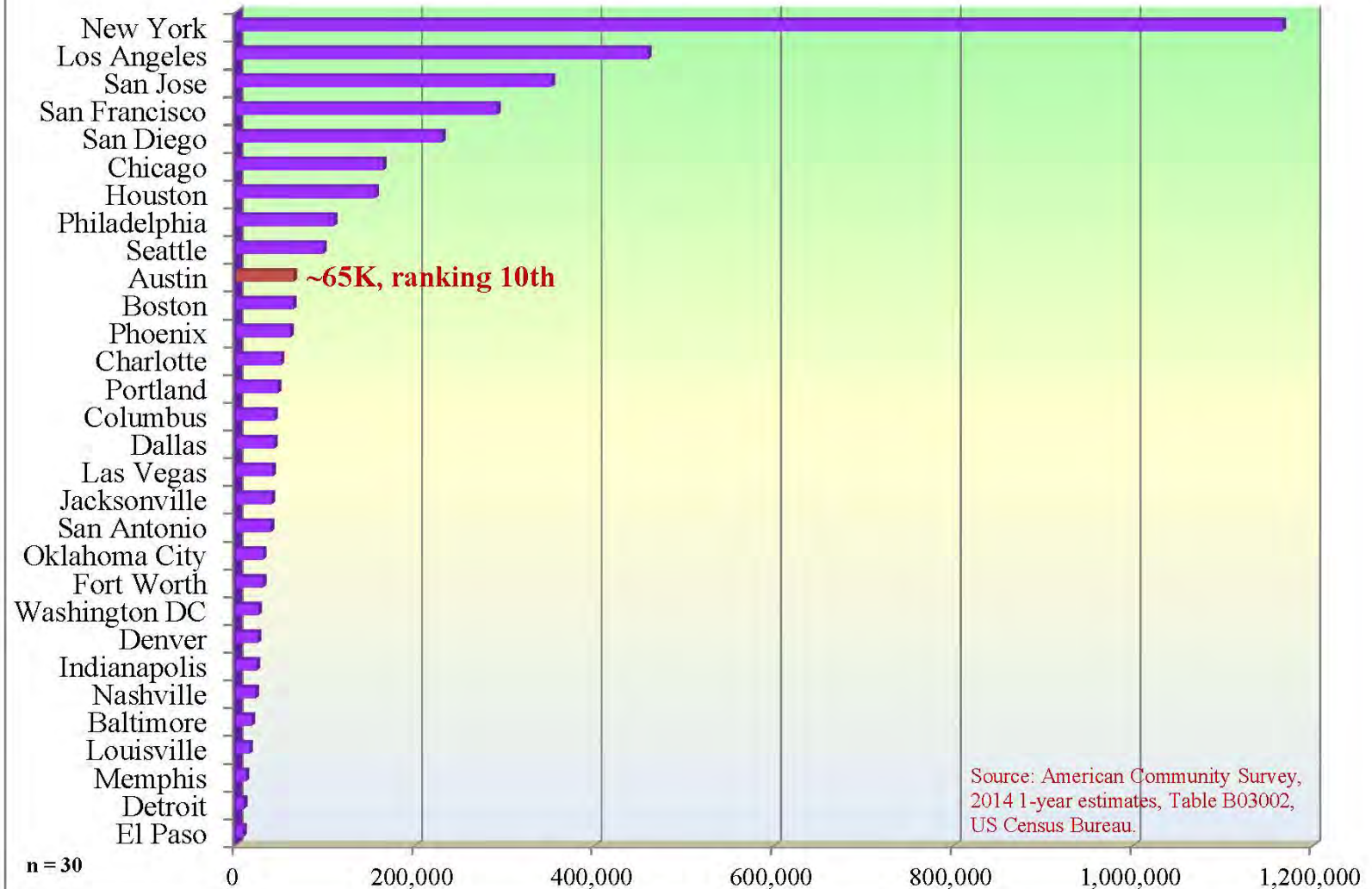
Top 30 Cities in the US, 2014 ranking



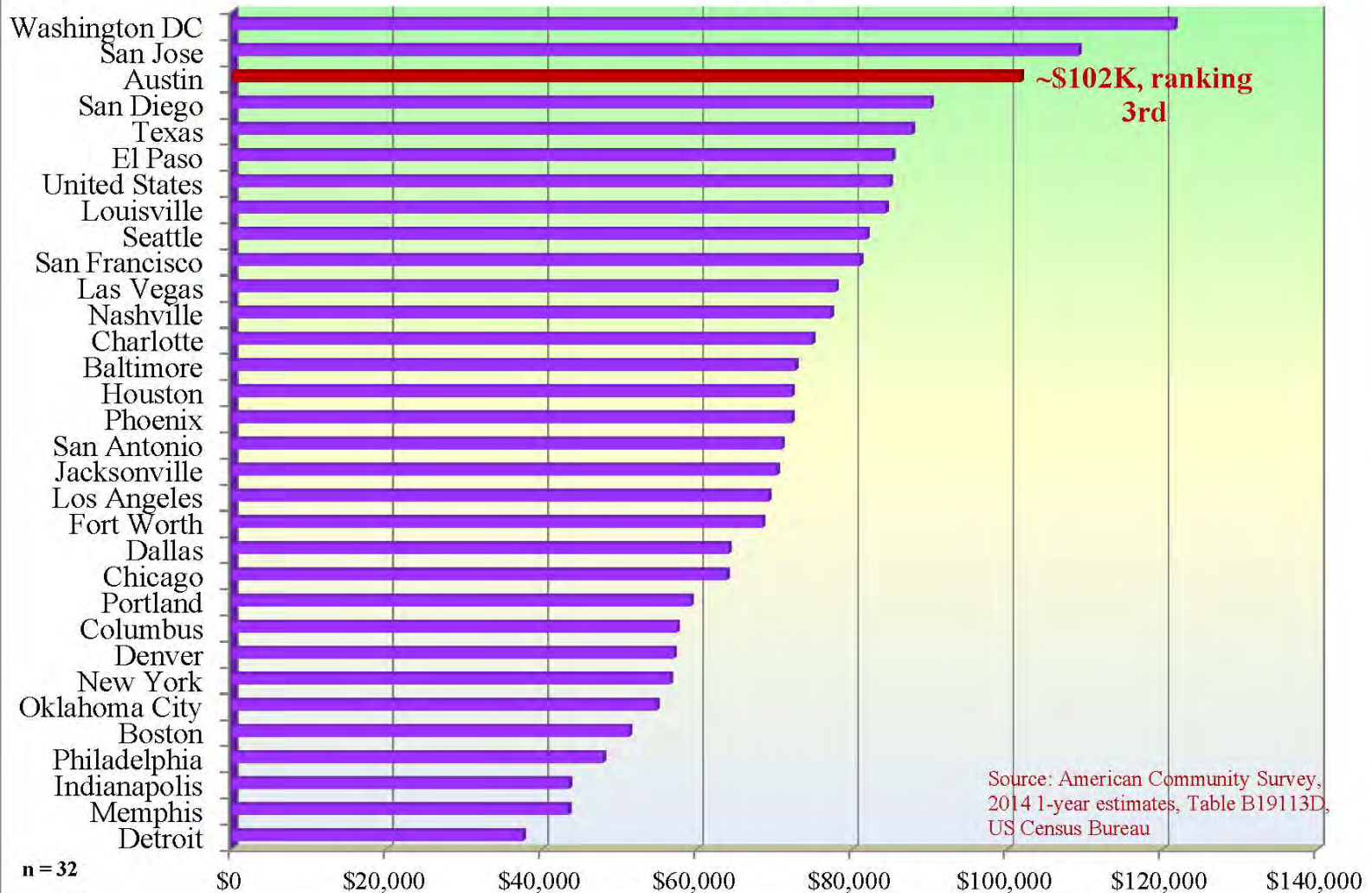
Asian Share of Total Population: Top 30 Cities, Texas and US, 2014



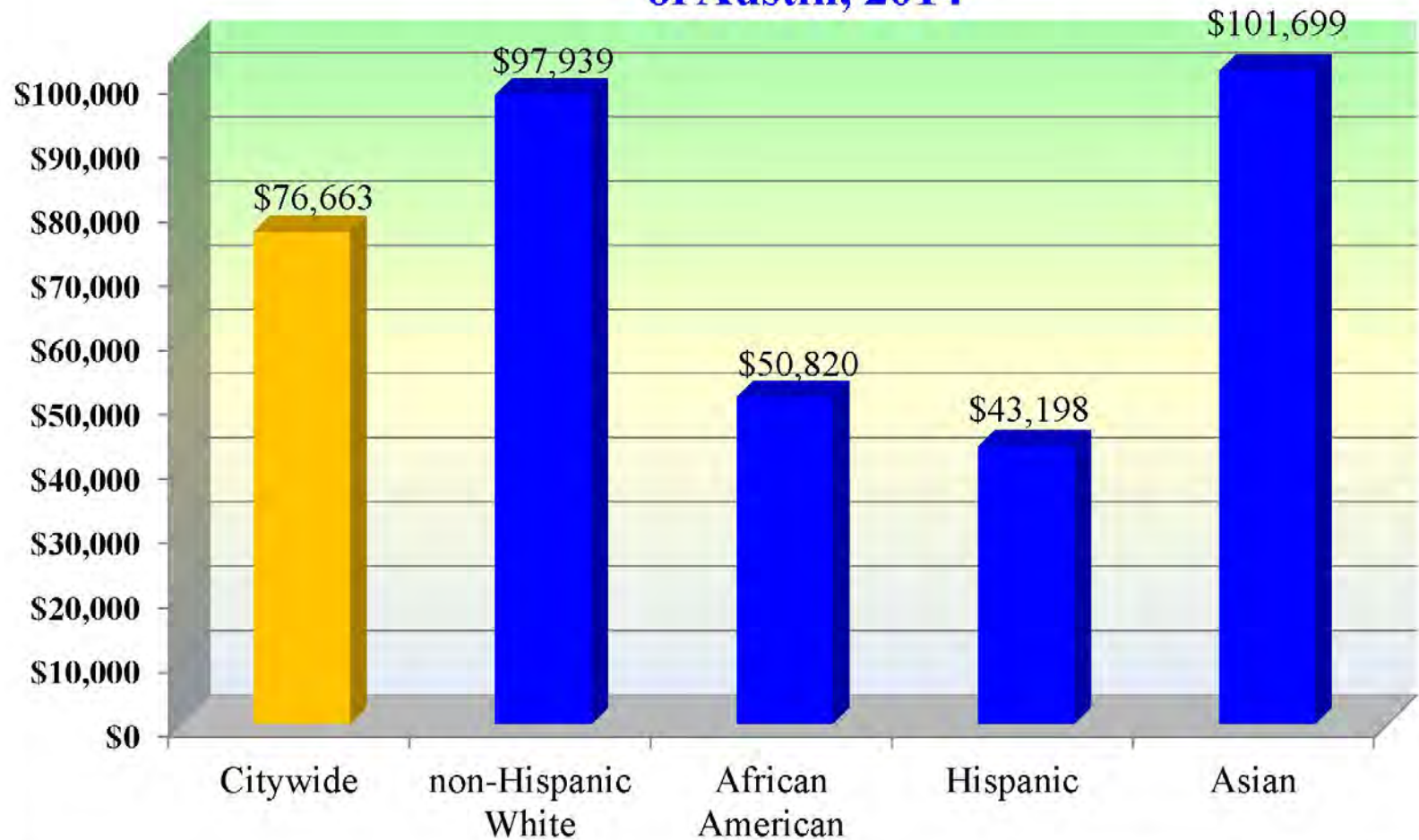
Total Asian Population: Top 30 Cities, 2014



Asian Median Family Income: Top 30 Cities, Texas and US, 2014

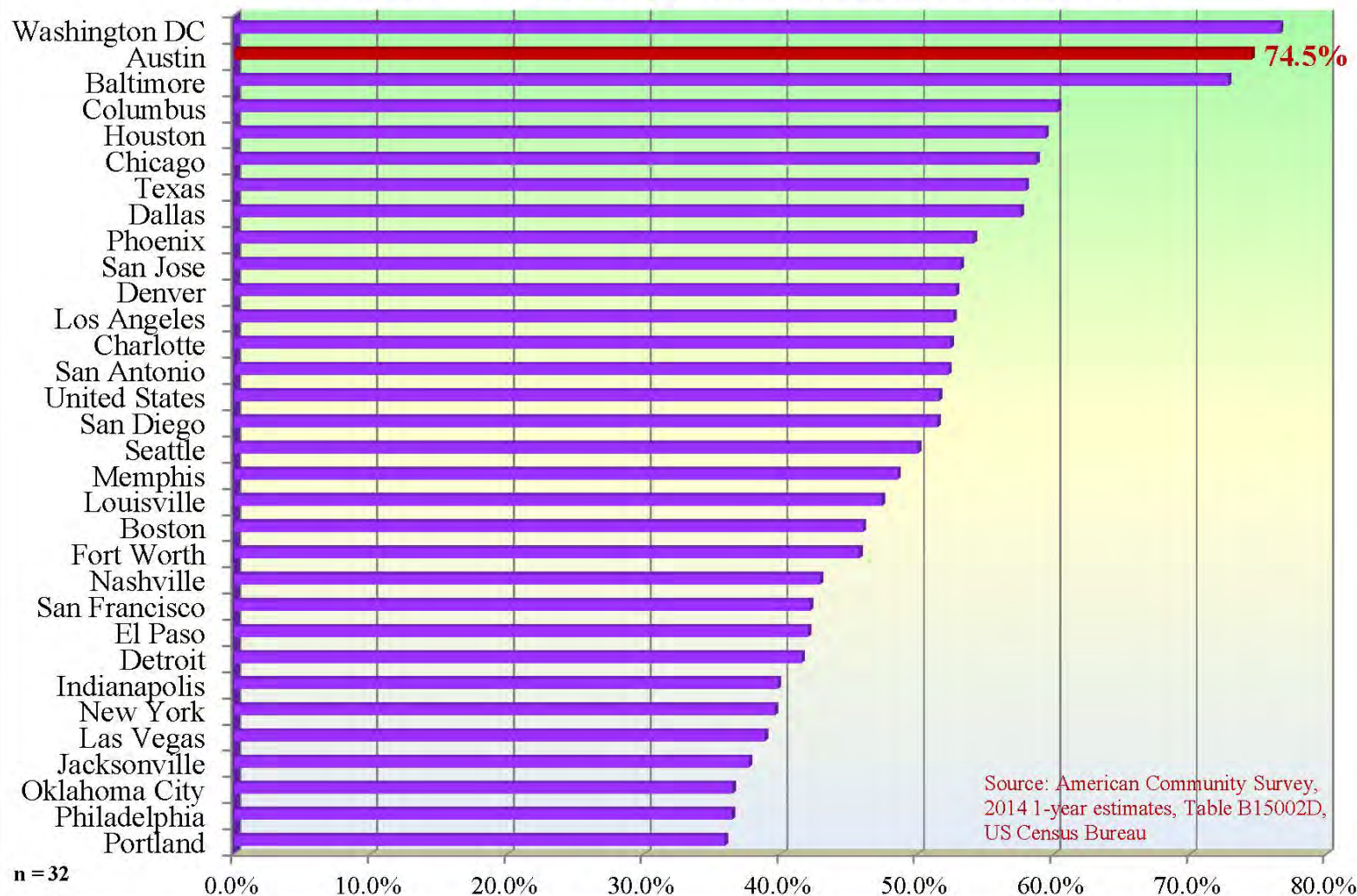


Median Family Income by Race and Ethnicity, City of Austin, 2014

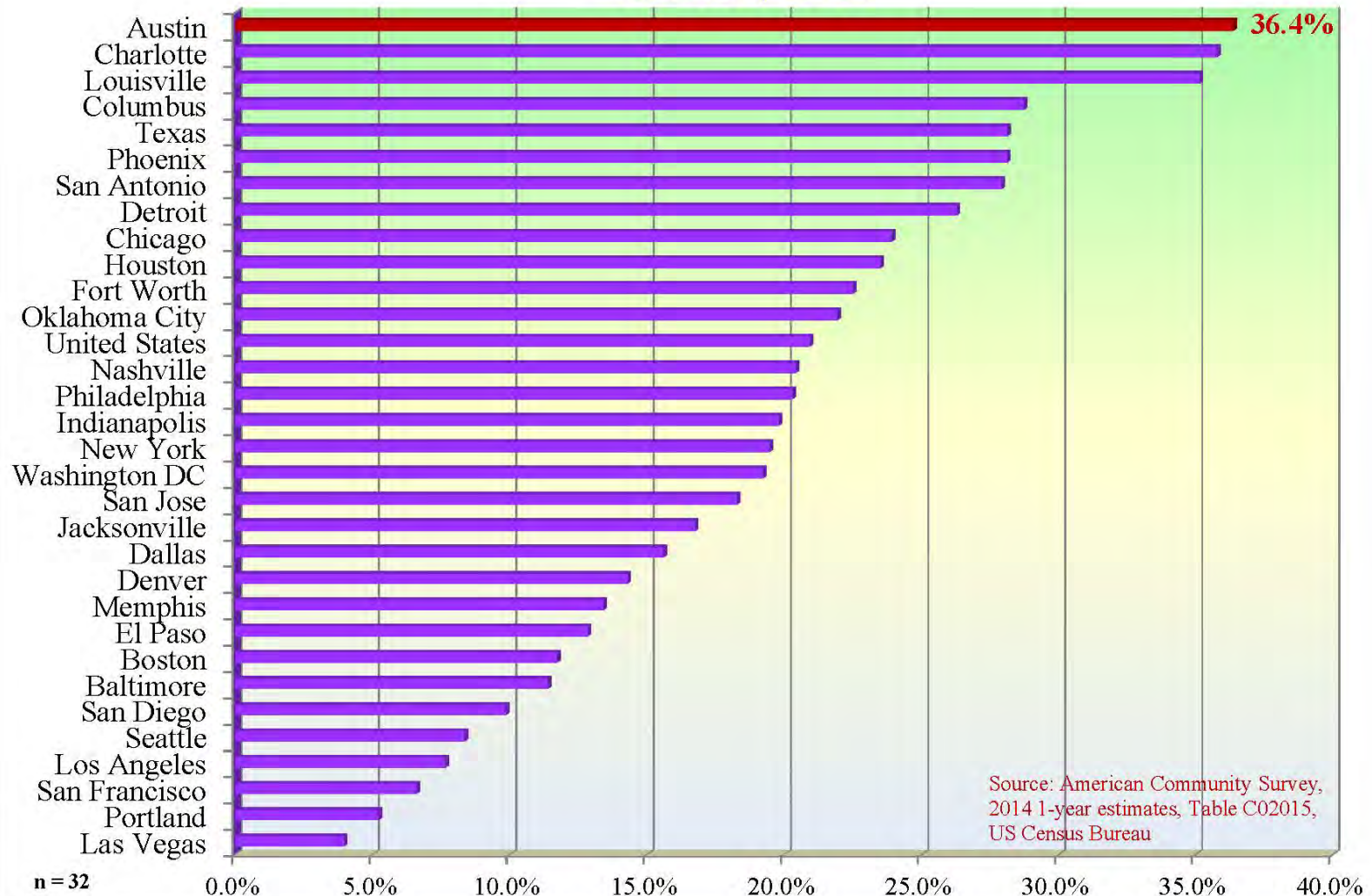


Source: American Community Survey, 2014 1-year estimates, Table B19113, US Census Bureau.

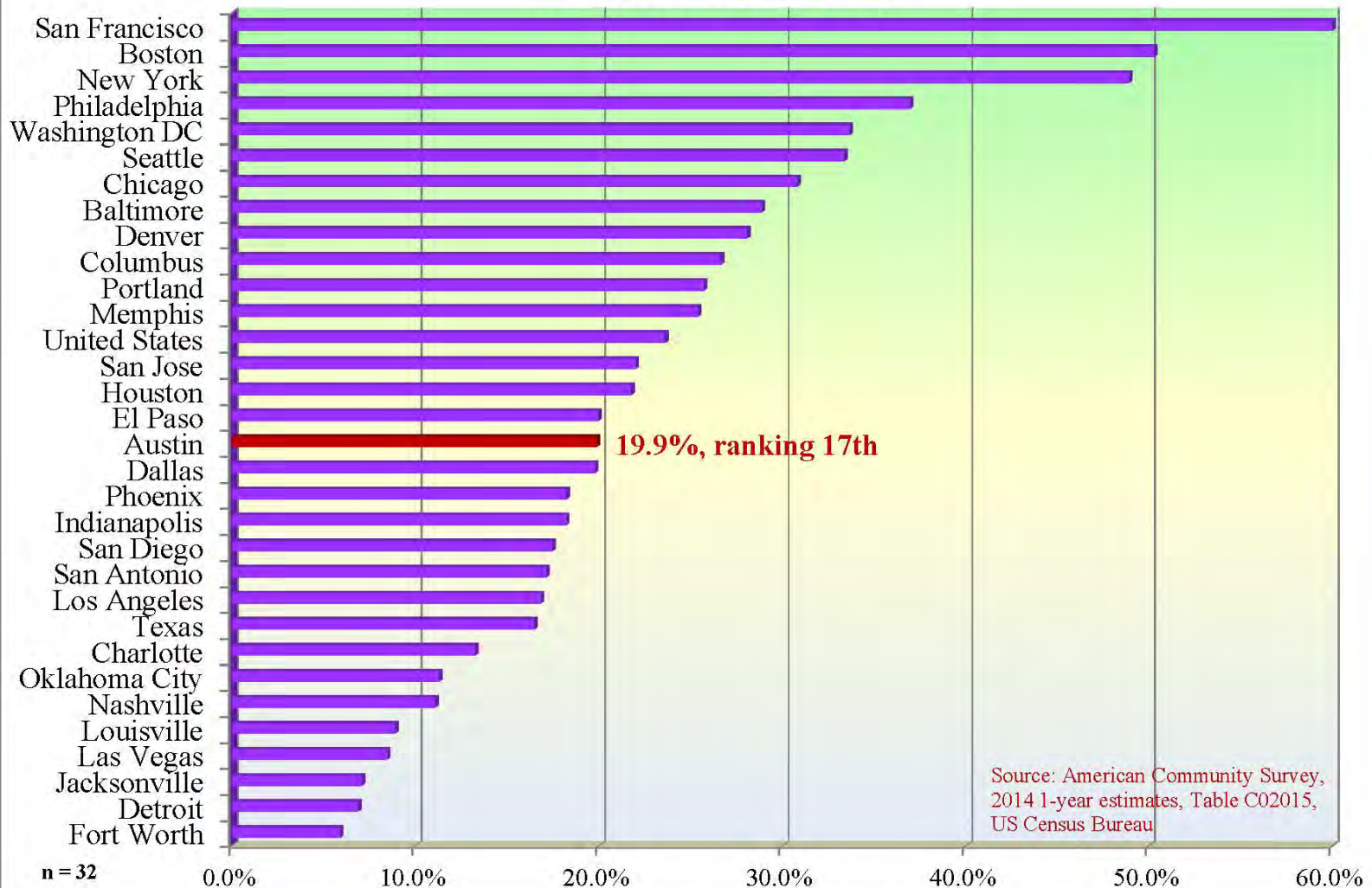
Asian Educational Attainment--percentage of age 25 Plus with at least a Bachelor's: Top 30 Cities, Texas and US, 2014



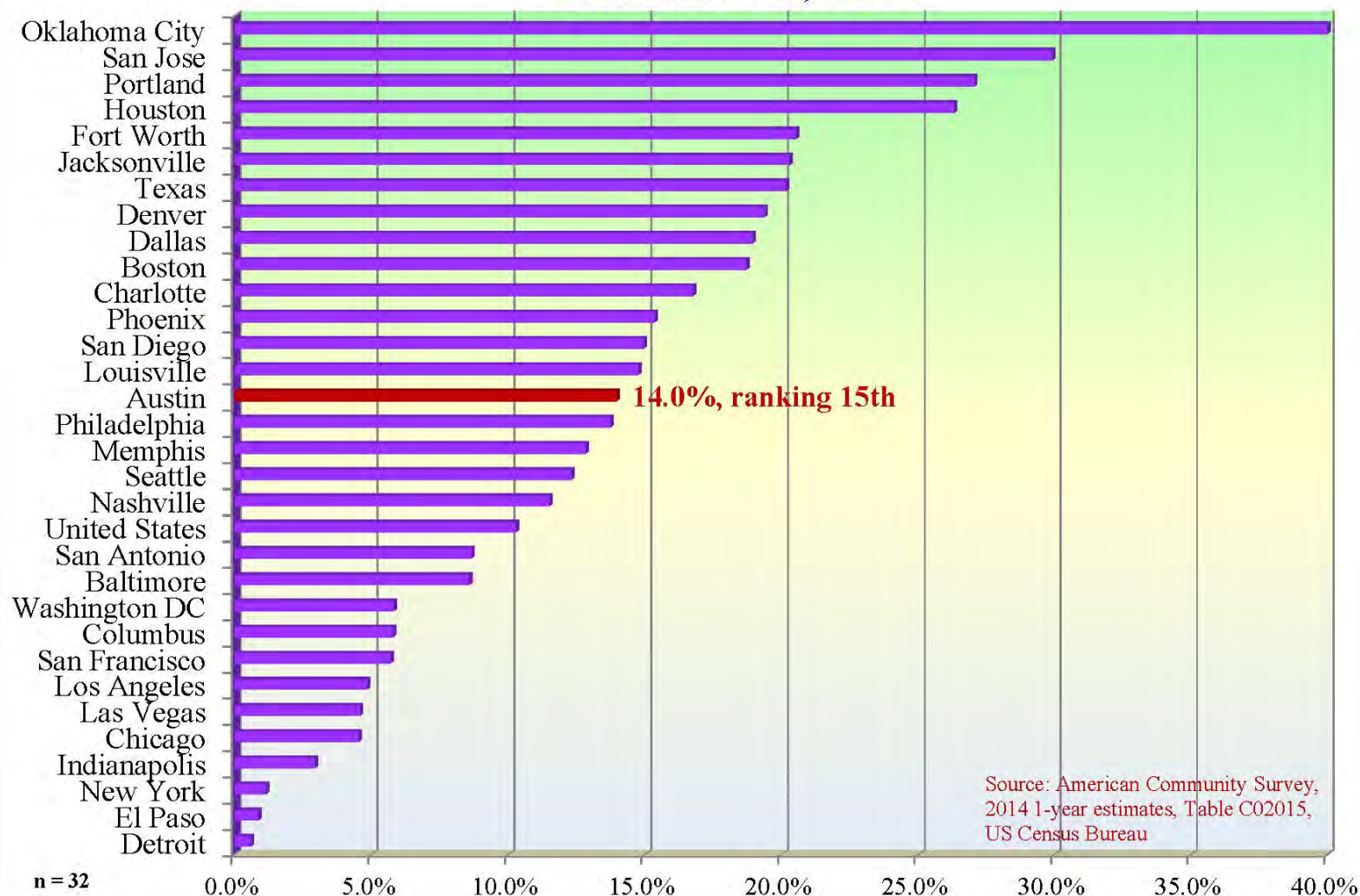
Indian Share of Total Asian Population: Top 30 Cities, Texas and US, 2014



Chinese Share of Total Asian Population: Top 30 Cities, Texas and US, 2014



Vietnamese Share of Total Asian Population: Top 30 Cities, Texas and US, 2014



Asian Median Ages: Top 30 Cities, Texas and US, 2014

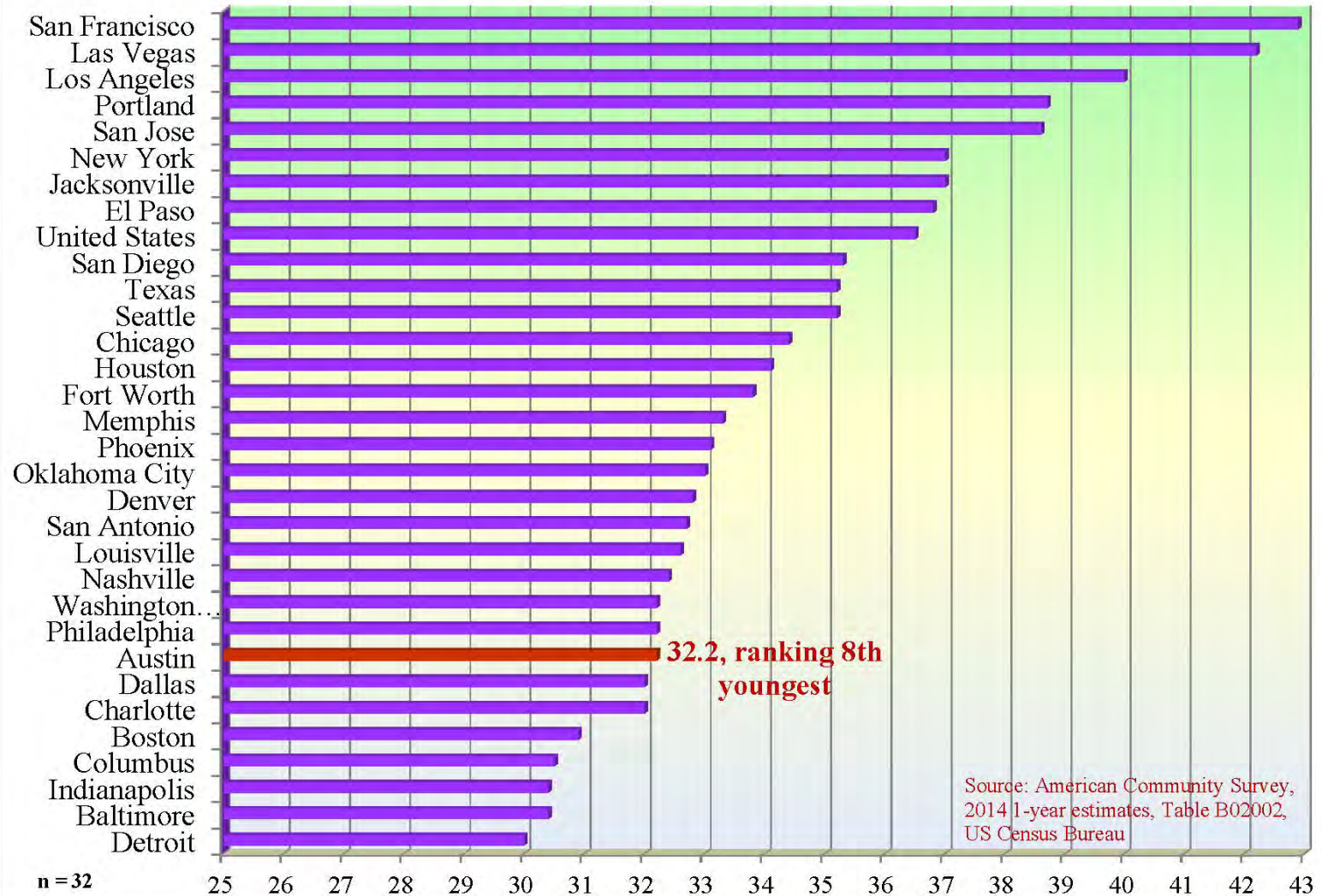


Table 1

Total Population and Racial--Ethnicity Shares (ACS Table B03002)

n = 32													
Geographic Entity	Census 2014 Population	City Population Rank	non-Hispanic White Share	African American Share	Hispanic Share	Asian Share	Asian Share Rank	Other Share	Total non-Hispanic White	Total African American	Total Hispanic	Total Asian	Total Other
Austin	912,798	11	48.6%	7.5%	34.4%	7.0%	9	2.4%	443,950	68,595	314,360	63,984	21,909
Baltimore	622,793	26	28.0%	62.1%	4.7%	2.7%	26	2.4%	174,627	386,599	29,448	17,092	15,027
Boston	656,051	24	45.6%	22.3%	18.6%	9.7%	7	3.7%	299,245	146,502	122,342	63,487	24,475
Charlotte	809,974	17	42.9%	34.4%	13.6%	6.2%	13	2.8%	347,815	278,914	110,440	49,918	22,887
Chicago	2,722,407	3	31.8%	31.0%	29.5%	6.0%	14	1.7%	866,569	842,674	802,245	163,818	47,101
Columbus	836,293	15	57.5%	27.3%	5.8%	5.1%	16	4.2%	481,169	228,496	48,848	42,553	35,227
Dallas	1,281,031	9	29.2%	24.0%	41.4%	3.3%	25	2.0%	373,759	307,913	530,798	42,439	26,122
Denver	663,862	21	53.3%	9.3%	30.8%	3.7%	22	3.0%	353,627	61,627	204,375	24,408	19,825
Detroit	680,281	18	10.2%	79.1%	7.2%	1.2%	31	2.2%	69,588	538,400	49,013	8,478	14,802
El Paso	679,024	19	14.6%	3.7%	79.4%	1.2%	32	1.0%	99,170	25,447	539,340	8,149	6,918
Fort Worth	812,553	16	39.9%	19.6%	34.2%	3.7%	23	2.6%	323,928	159,559	277,889	29,747	21,430
Houston	2,240,796	4	24.6%	22.8%	44.1%	6.9%	11	1.5%	552,325	511,761	988,224	155,099	33,387
Indianapolis	851,353	14	56.9%	27.4%	10.2%	2.7%	27	2.8%	484,528	233,671	86,611	22,871	23,672
Jacksonville	853,376	12	53.0%	30.6%	8.9%	4.6%	18	2.8%	452,600	261,399	75,786	39,545	24,046
Las Vegas	613,590	29	44.4%	12.0%	33.0%	6.6%	12	3.9%	272,456	73,851	202,616	40,533	24,134
Los Angeles	3,928,827	2	28.5%	8.6%	48.6%	11.7%	6	2.6%	1,118,352	339,431	1,910,990	459,117	100,937
Louisville	612,775	30	67.2%	22.8%	4.8%	2.4%	29	2.8%	411,902	139,692	29,149	14,811	17,221
Memphis	656,876	23	26.1%	64.0%	6.4%	1.6%	30	1.9%	171,427	420,298	41,907	10,835	12,409
Nashville	644,008	25	56.0%	27.9%	10.2%	3.4%	24	2.5%	360,545	179,945	65,626	21,790	16,102
New York	8,491,079	1	32.3%	22.3%	29.0%	13.7%	5	2.8%	2,738,547	1,891,387	2,460,898	1,165,003	235,244
Oklahoma City	620,553	27	55.1%	14.4%	18.3%	4.8%	17	7.4%	341,834	89,344	113,361	29,795	46,219
Philadelphia	1,560,297	5	35.7%	41.2%	13.6%	7.0%	10	2.5%	556,517	643,052	212,703	109,178	38,847
Phoenix	1,537,045	6	44.9%	6.4%	41.2%	3.9%	20	3.7%	689,526	97,631	633,099	60,402	56,387
Portland	619,445	28	71.2%	5.4%	10.2%	7.5%	8	5.6%	441,068	33,646	63,194	46,730	34,807
San Antonio	1,436,723	7	25.3%	6.6%	63.8%	2.7%	28	1.6%	364,008	94,964	916,540	38,531	22,680
San Diego	1,381,083	8	43.1%	6.1%	30.3%	16.6%	3	3.9%	594,815	84,036	418,435	229,540	54,257
San Francisco	852,469	13	40.8%	5.2%	15.3%	34.1%	2	4.6%	348,131	44,419	130,275	290,765	38,879
San Jose	1,015,796	10	26.7%	2.8%	32.8%	34.6%	1	3.1%	270,821	28,906	332,951	351,471	31,647
Seattle	668,337	20	66.2%	6.9%	6.2%	14.5%	4	6.3%	442,198	46,260	41,279	96,810	41,790
Texas	26,956,958	na	43.4%	11.7%	38.6%	4.3%	19	1.9%	11,708,178	3,150,560	10,408,238	1,169,001	520,981
United States	318,857,056	na	61.9%	12.3%	17.3%	5.3%	15	3.1%	197,409,353	39,267,149	55,279,452	17,021,202	9,879,900
Washington DC	658,893	22	35.7%	47.7%	10.4%	3.7%	21	2.4%	235,433	314,473	68,356	24,677	15,954

Table 2**Median Family Income (Tables B11913 and B11913D)****Table 3 Educational Attainment (Tables B15002 and B15002D)**

n = 32												
Geographic Entity	Asian MFI	Rank	Overall MFI	Rank	Depth of Disparity (100% = Equality)	Rank	Asian Bachelors Plus	Rank	Overall Bachelors Plus	Rank	Depth of Disparity (100% = Equality)	Rank
Austin	\$101,699	3	\$76,663	6	132.7%	23	74.5%	2	47.6%	4	156.4%	16
Baltimore	\$72,642	14	\$50,408	27	144.1%	29	72.8%	3	30.0%	18	242.3%	31
Boston	\$51,205	28	\$61,714	12	83.0%	4	46.0%	20	46.5%	5	98.8%	4
Charlotte	\$74,864	13	\$67,936	9	110.2%	12	52.4%	13	41.3%	9	126.8%	9
Chicago	\$63,785	22	\$55,837	19	114.2%	16	58.7%	6	36.0%	12	163.1%	18
Columbus	\$57,367	24	\$55,388	21	103.6%	10	60.2%	4	34.7%	14	173.6%	22
Dallas	\$64,049	21	\$46,880	29	136.6%	26	57.5%	8	29.9%	19	192.6%	25
Denver	\$56,970	25	\$71,439	7	79.7%	2	52.8%	11	44.3%	8	119.3%	8
Detroit	\$37,479	32	\$31,078	32	120.6%	17	41.5%	25	13.8%	32	301.0%	32
El Paso	\$85,164	6	\$46,184	30	184.4%	32	42.0%	24	23.3%	30	179.8%	24
Fort Worth	\$68,419	20	\$61,433	13	111.4%	13	45.7%	21	26.5%	25	172.6%	21
Houston	\$72,178	15	\$50,776	26	142.1%	28	59.3%	5	30.4%	16	195.4%	26
Indianapolis	\$43,481	30	\$52,062	25	83.5%	6	39.7%	26	28.7%	20	138.6%	12
Jacksonville	\$70,243	18	\$55,173	22	127.3%	19	37.6%	29	24.9%	28	151.0%	15
Las Vegas	\$77,880	11	\$60,473	14	128.8%	21	38.8%	28	21.9%	31	177.4%	23
Los Angeles	\$69,184	19	\$55,147	23	125.5%	18	52.6%	12	32.3%	15	163.0%	17
Louisville	\$84,318	8	\$57,481	17	146.7%	31	47.4%	19	28.3%	22	167.5%	19
Memphis	\$43,400	31	\$40,864	31	106.2%	11	48.5%	18	24.4%	29	198.7%	28
Nashville	\$77,234	12	\$57,228	18	135.0%	25	42.8%	22	36.8%	11	116.6%	7
New York	\$56,489	26	\$58,729	16	96.2%	8	39.5%	27	35.9%	13	110.1%	5
Oklahoma City	\$54,757	27	\$58,938	15	92.9%	7	36.4%	30	28.5%	21	128.0%	10
Philadelphia	\$47,850	29	\$46,989	28	101.8%	9	36.4%	31	26.0%	26	139.9%	14
Phoenix	\$72,174	16	\$55,560	20	129.9%	22	54.1%	9	27.4%	24	197.5%	27
Portland	\$59,164	23	\$70,921	8	83.4%	5	35.9%	32	46.1%	6	77.8%	2
San Antonio	\$70,901	17	\$52,822	24	134.2%	24	52.2%	14	25.0%	27	208.5%	30
San Diego	\$90,140	4	\$79,751	5	113.0%	15	51.4%	16	44.4%	7	115.9%	6
San Francisco	\$81,027	10	\$100,850	2	80.3%	3	42.1%	23	54.2%	3	77.6%	1
San Jose	\$109,146	2	\$96,706	3	112.9%	14	53.1%	10	39.7%	10	133.7%	11
Seattle	\$81,849	9	\$103,267	1	79.3%	1	50.0%	17	58.9%	1	84.8%	3
Texas	\$87,686	5	\$62,830	11	139.6%	27	57.9%	7	27.8%	23	208.3%	29
United States	\$84,860	7	\$65,910	10	128.8%	20	51.5%	15	30.1%	17	171.4%	20
Washington DC	\$121,534	1	\$84,094	4	144.5%	30	76.6%	1	55.0%	2	139.3%	13

