



**30 YEARS OF
KEEPING
AUSTIN'S
WATER
CLEAN AND
CLEAR
WITH THE
COMPREHENSIVE
WATERSHEDS
ORDINANCE**



**Environmental Commission Briefing
May 18, 2016
by**

Sue Barnett, Environmental Review Manager, DSD

Sylvia R. Pope, P.G., Hydrogeologist, WPD

Environmental Review and Drainage and Water Quality Review



LAND USE REVIEW IMPLEMENTS THE CWO

**Atha Phillips, Pamela Abee-Taulli, Mike
McDougal, Taylor Horton,
Jim Dymkowski**

**Leslie Daniel, Benny Ho, Joydeep Goswami,
Danielle Guevara, John Powell, Ron
Czajkowski, David Marquez, Michael Duval,
Tomas Rodriguez, Jay Baker**

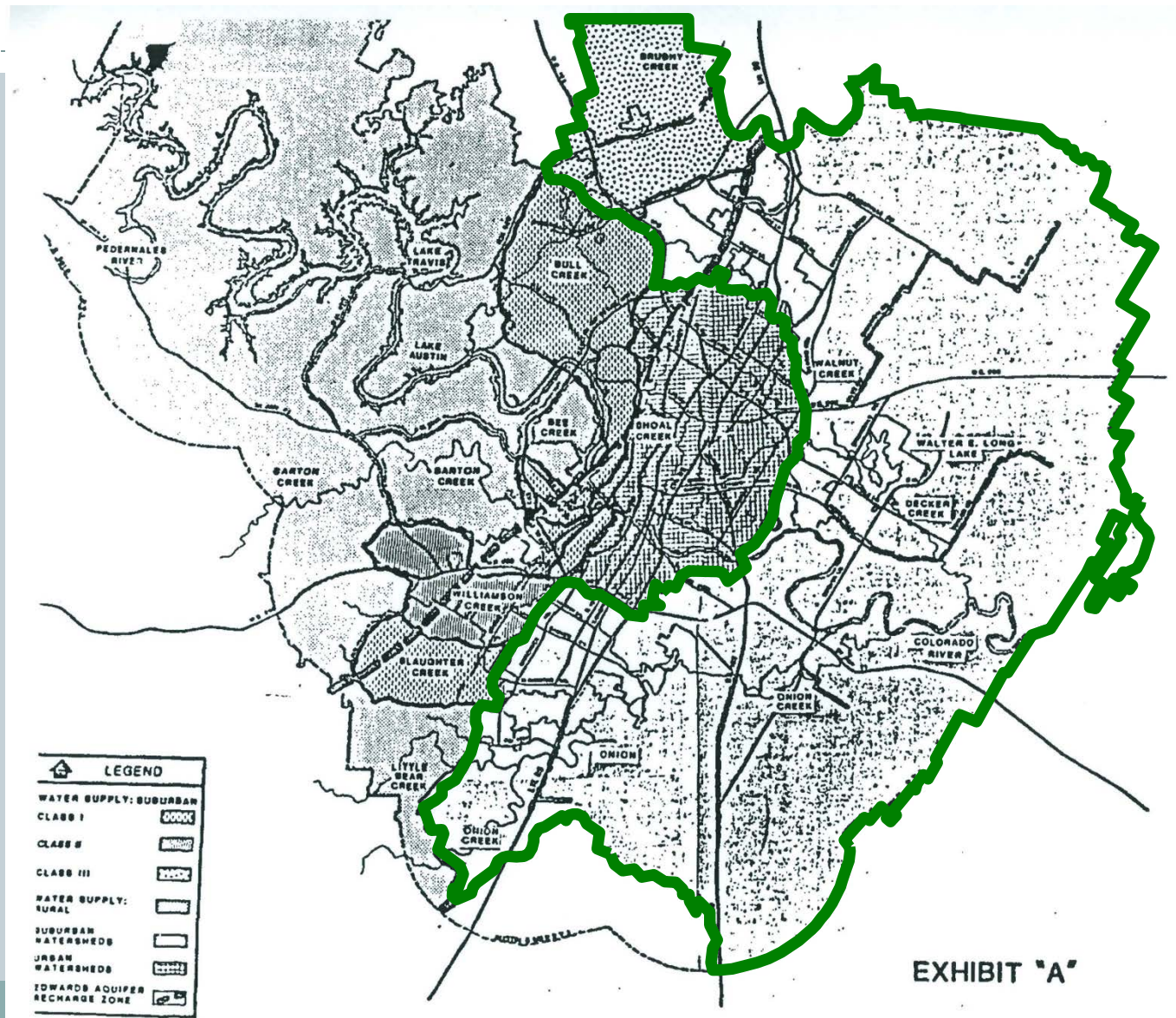
1986 Comprehensive Watersheds Ordinance

Stream Buffers

**Structural
Water Quality
Controls**

**Impervious
Cover Limits**

**Critical
Environmental
Features**



Impervious Cover



Development with 25-8
Impervious Cover
restrictions + 25-2
Landscape requirements

Development pre- 25-8 Impervious
Cover and Landscape requirements

Cut/Fill and Construction on Slopes



Erosion Control



Stream Buffers



Structural Water Quality Controls



**Drainage and
Water Quality
Review, DSD**

**Structural Controls in
all Watersheds**



Critical Environmental Feature Review



TECHNICAL REVIEW by Environmental Resources Management, Watershed Protection Department

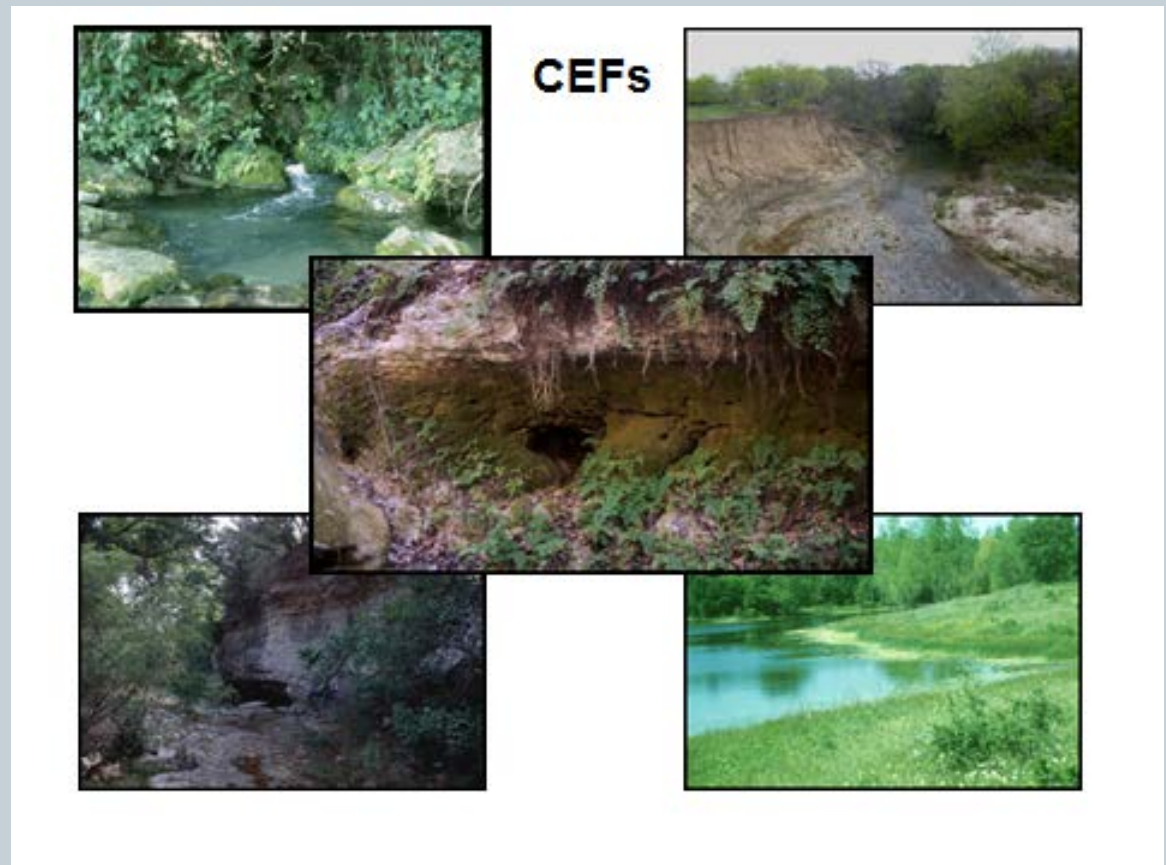
Joan I. Balogh, P.S.S.,
Brent Bellinger, Ph.D.,
Andrew Clamann,
John Clement, Ph.D.,
Ana Gonzalez, Ph.D.,

Scott E. Hiers, P.G.,
Liz Johnston, M.L.A.,
Sylvia R. Pope, P.G., and
Staryn Wagner

Critical Environmental Features (CEF)

CEF Variance Process

- Environmental Commission recommendation
- Land Use Commission approval or denial
- Or, an administrative variance approval by WPD director when conditions warrant

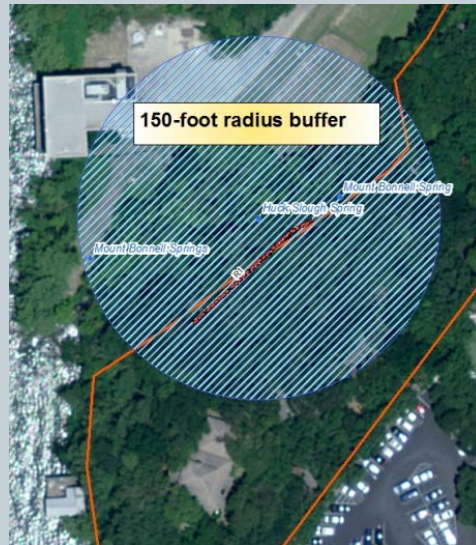


Springs, bluffs, caves, sinkholes, canyon rimrock and wetlands

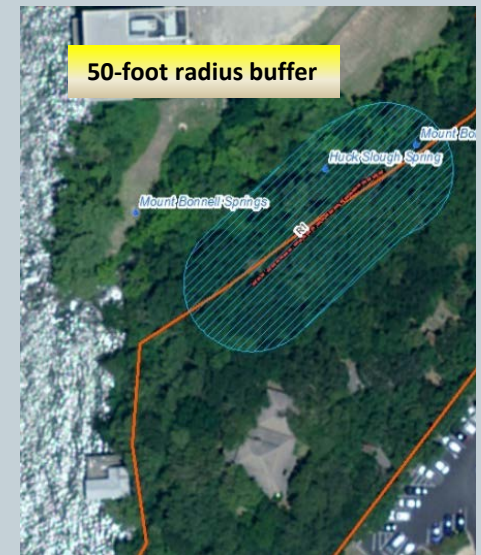
Critical Environmental Feature (CEF) buffers

Standard CEF
buffer
radius/distance is
150 feet, up to 300
feet for recharge
features

Variances may
modify the buffer
distance as long as
the characteristics of
the feature and water
quantity and quality
are maintained



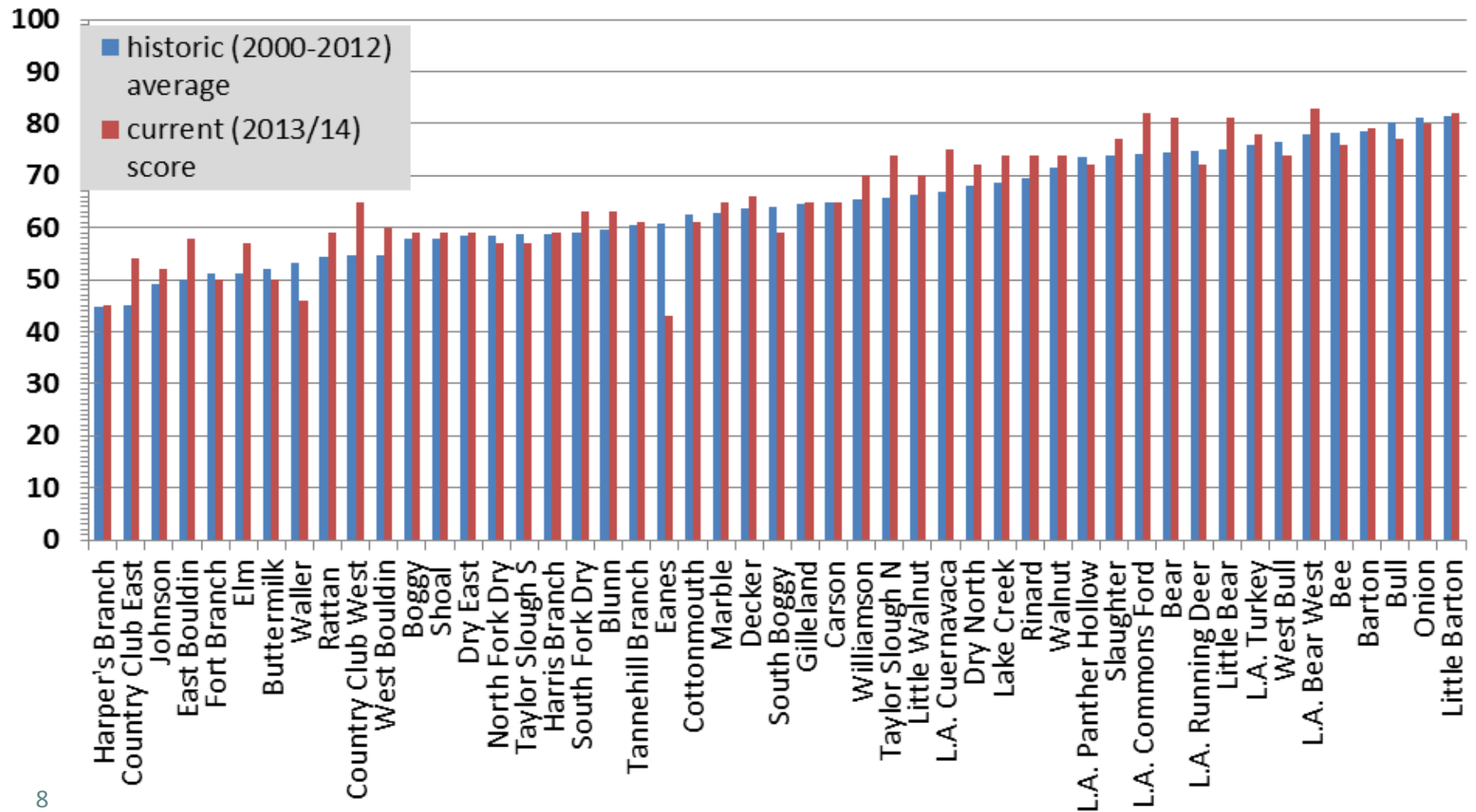
Buffer
reduction



Buffer **modification**



**For the last complete EII cycle (2013/2014), 34 of 49 watersheds scored better than their previous 10 year historic average –
A potential indicator that the requirements of the CWO help maintain creek integrity**



ACCOMPLISHMENTS:

30 Years of the Comprehensive Watersheds Ordinance



- ***Drinking water supply protection***
- Establish Creek and lake buffers
- Water pollution prevention
- Protection of over 4,780 Critical Environmental Features
- Preserves the natural and traditional character of Austin waterways
- Provides recreational benefit
- Provided the foundation for ordinances that followed, such as the Save Our Springs and Watershed Protection Ordinance