

Humpty Dumpty

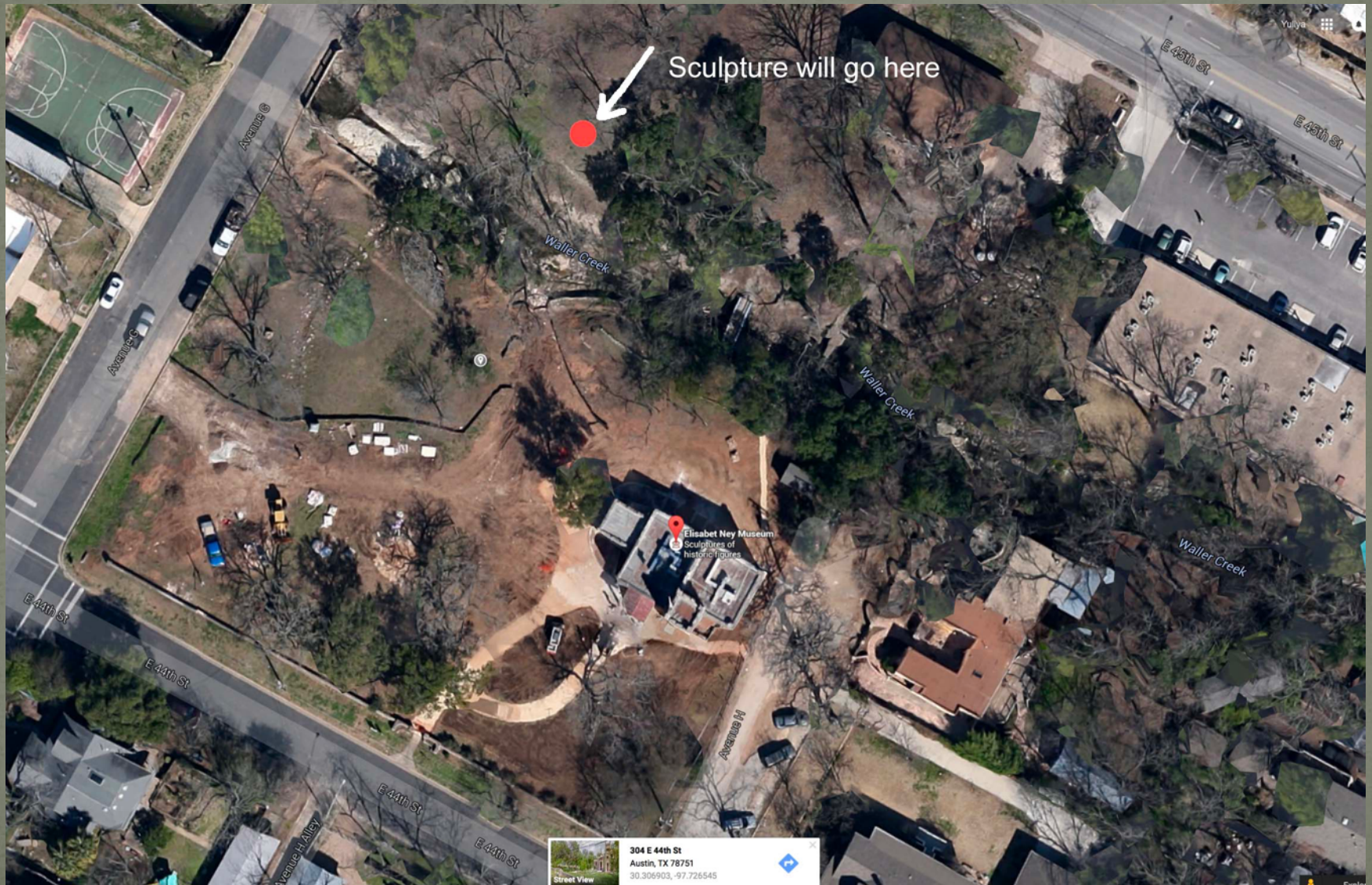
— ● —
Yuliya Lanina



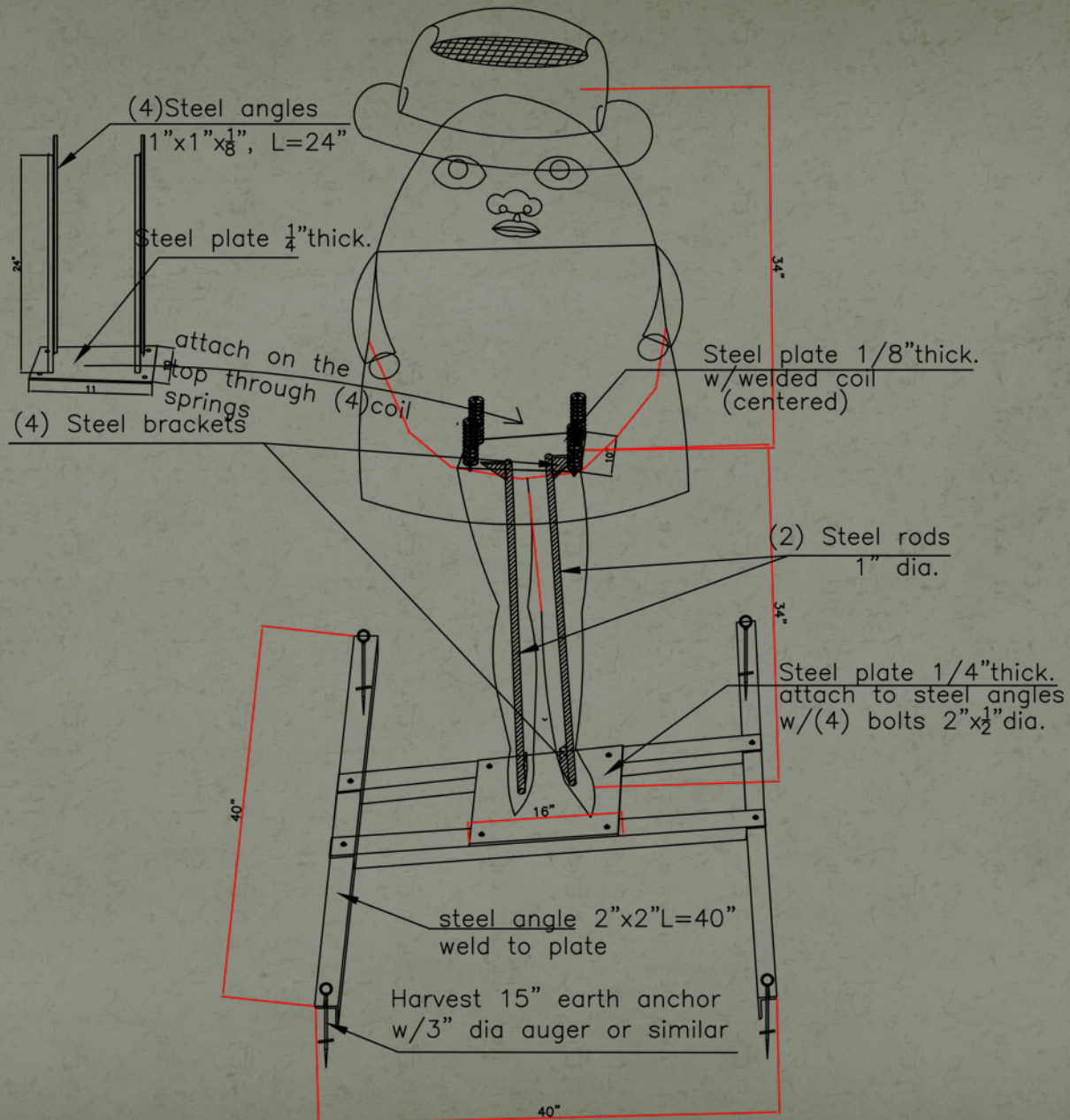
Inspiration from previous work



Elisabet Ney Museum







RASPBERRY-PI
RASPBERRYPI3-MODB-1GB.
Raspberry Pi 3 Model B

6V 633mA Round
Photovoltaic Module

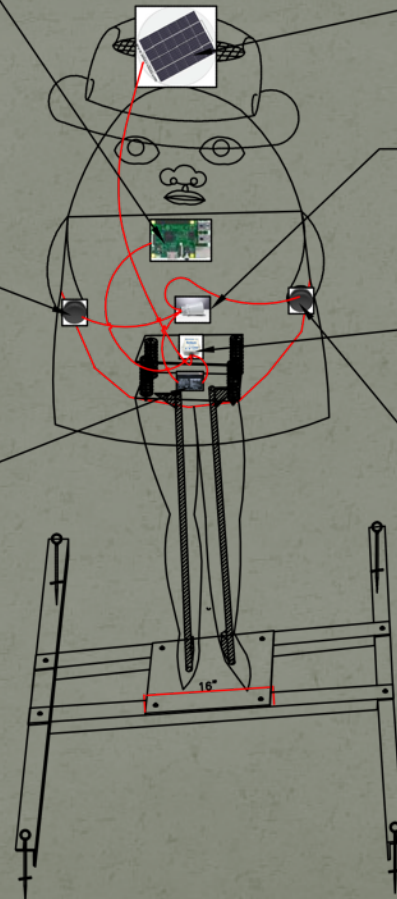
computer speakers

Maxbotix Weather-Resistant
Ultrasonic Rangefinder - MB7092
XL-MaxSonar-WRMA1

Morning Star 12v 4.5 Amp
Waterproof Solar Charge
Controller SG-4

Universal 12v 7 AH
Deep Cycle
Sealed Lead Acid
Battery SLA-1270

computer speakers



SOUND SYSTEM

Material List:

- Recycled polystyrene
- Urethane coating
- Steel
- Nylon fabric
- Paint
- Stones
- Solar panel
- Charge controller
- Battery
- Raspberry pi
- Distance sensor
- Computer speakers

Budget

Description	Cost
Studio Overhead	
Artwork fabrication	
Rent for 1 month (\$ 600/month)	\$ 600
Fabrication Costs/materials	
Substructure Fabrication	
Materials: Steel, spring, anchors, brackets	\$ 295
Mannequin legs	\$80
Recycled polystyrene	\$ 500
Urethane coating and primer (Blue Genie or Dale Whistler)	\$ 600
Fabrications cost (Dale Whistler) 60 dollars/hr, 15 hours	\$900
Welding, cutting (Trey Waskerman)	\$ 350
Installation /de-installation	\$ 240
Hiring labor to install and deinstall the piece (Labor Ready.com \$20 per hour per person/ 3 men for 4 hours)	
Final finish Fabrication	
Materials:	
Paint, fabric	\$ 250
Stones (Margo Mixed Grade A Polished Pebbles, 1" to 2")	\$ 60
Fabrication cost (modeling, painting, stitching, putting the piece together, decorating)	\$ 1,080
60 dollars/hr, 18 hours	

Budget

Musical element fabrication

Solar panel(Lightweight Unbreakable Solar Charger BSP1012-LSS)	\$115
Charge controller (Morning Star)	\$36
Battery (Universal SLA-1270)	\$25
Distance Sensor(Ultrasonic Rangefinder) 3 pieces, 85 dollars each	\$255
Raspberry pi	\$38
Digital Amplifier	\$95
high efficiency outdoor speakers 70	\$75
Voltage converter, wire, interfacing circuits	\$30
Speaker wire, rca jacks	\$20
Fabrication 60 dollars/hr, 16 hours (Ted Johnson)	\$960
Musical composition (Yevgeniy Sharlat)	\$900

Insurance

General and Auto insurance	\$ 550
----------------------------	--------

Transportation

Transportation of the piece, truck rental and mileage	
Will need to transport the piece 5 times and transport materials 4 times in the process of creation and once to remove from the site	\$ 120

Constingency

	\$ 368
--	--------

Artist Fee

Total budget:	\$10,000
----------------------	-----------------

Amount requested:	\$ 10,000
--------------------------	------------------

Exhibition Schedule

- Install date: October 1, 2016
- De-install date: December 31, 2016

Fabrication

- Dale Whistler –building the structure and the form
- Dale Whistler– urethane coating
- Yuliya Lanina – top coating and paint
- Ted Johnson - fabrication of musical element
- Yevgeniy Sharlat - original music composition
- Ready Labor – installation and de-installation
- Anya and Katya Lanina -artistic advisors



Thank you!

Thank you!