



IMAGINEAUSTON

Vibrant. Livable. Connected.

Commission on Seniors

June 7, 2016

Agenda Item 3.c

Matt Dugan, Planning and Zoning Department

Comprehensive Planning

- Plan Organization
- Priority Programs
- Implementation

Plan Organization

Chapter One

The Roadmap and the Road Ahead

- The need for a new comprehensive plan
- Core principles for a sustainable future
- Use these principles to realize the plan

Chapter Two

Experiencing Austin: Who Are We Today?

- Trends
- Challenges
- Issues

Based on **Strategic Issues Report** (2010)

Plan Organization

Chapter Three

Imagining Austin: Our Vision of a Complete Community

- Vision statement
- Complete communities

Endorsed by **City Council** (2010)

Chapter Four

Shaping Austin: Building the Complete Community

- Growth concept map series
- Building blocks and their policies

Based on **Plan Framework** (2011)

Plan Organization

Chapter Five

Implementation and Measuring Success

- Priority Programs
- Actions
- Using Imagine Austin
 - Planning
 - Regulations and Zoning
 - Spending
 - Annexation
 - Partnerships
- Monitoring and Review

By the Numbers

266 pages

(343 with appendices)

231 Actions

189 Policies

8 Priority Programs

1 Growth Concept Map

1 Vision

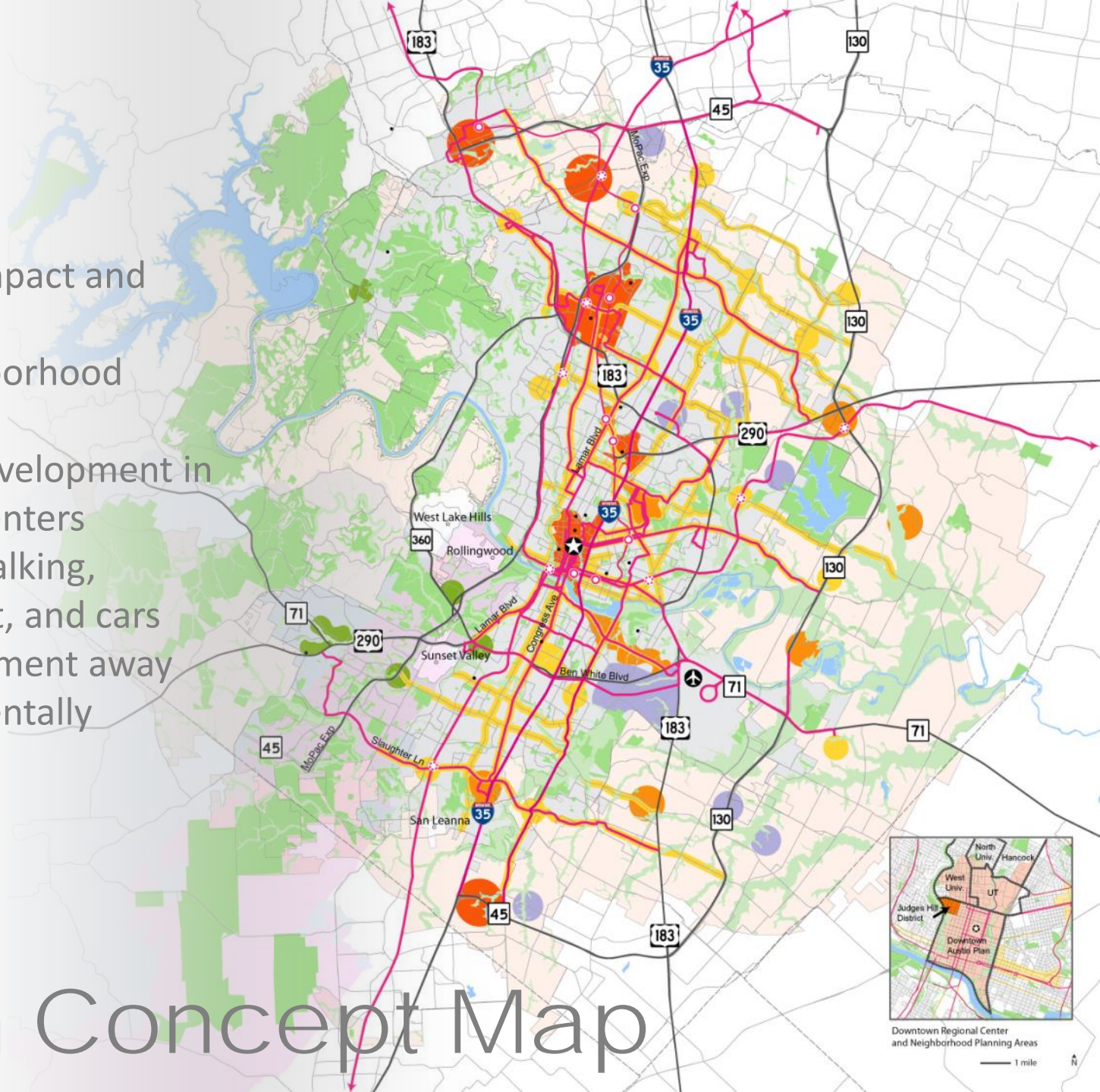


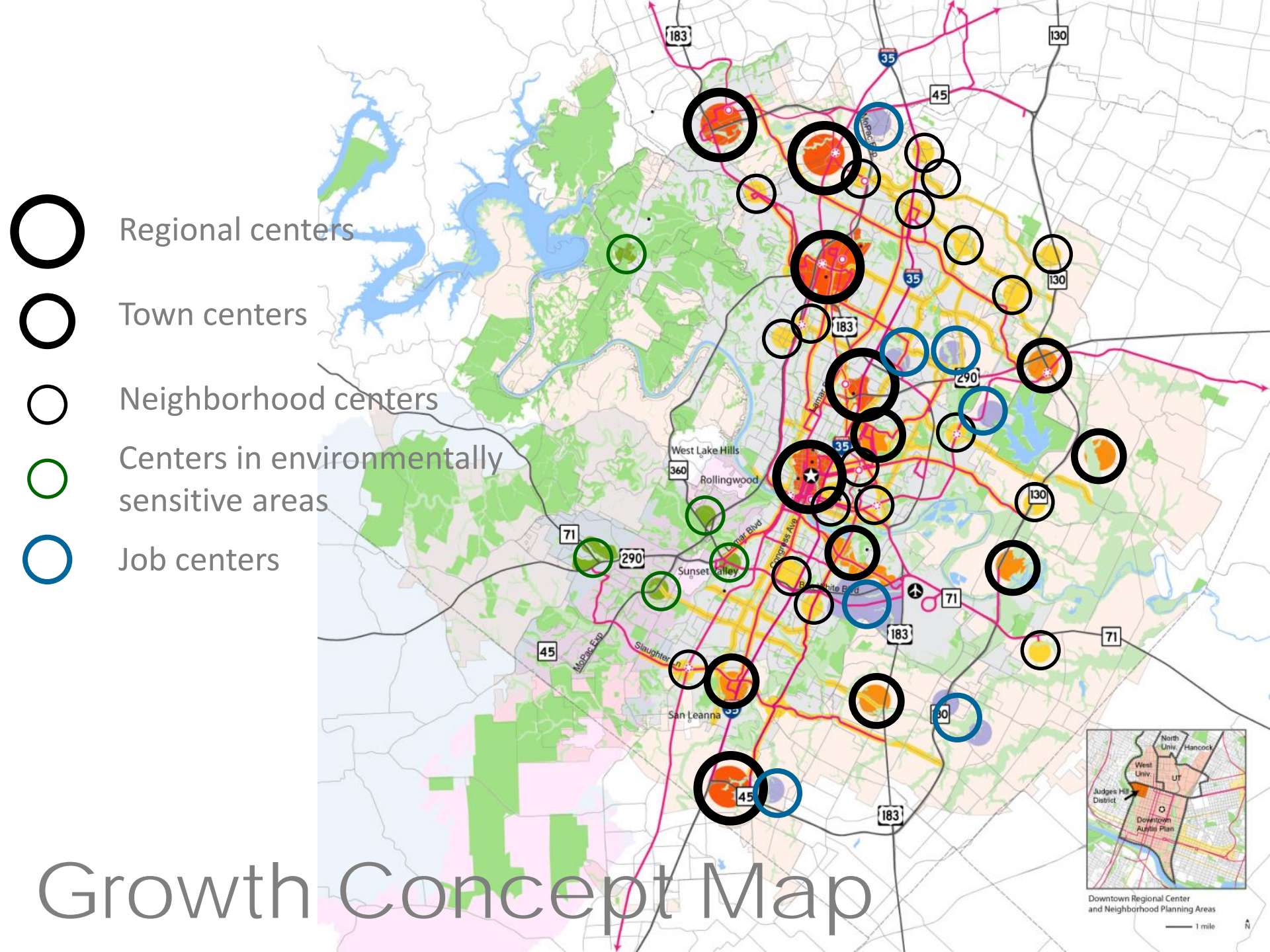
Vision



- Promotes a compact and connected city
- Preserve neighborhood character
- Focuses new development in corridors and centers accessible by walking, bicycling, transit, and cars
- Directs development away from environmentally sensitive areas

Growth Concept Map





Growth Concept Map

-
- This map illustrates the San Francisco Peninsula with various transit and environmental features. Major transit corridors are shown as thick black lines, while secondary roads are in pink. Environmental features include green areas for parks and blue areas for water bodies. Numerous circular nodes, some with red stars, are distributed across the map, representing transit centers or hubs. Highway shields for routes 183, 45, 130, 71, 290, and 360 are visible. Specific locations labeled include West Lake Hills, Rollingwood, Sunset, and San Leandro. An inset map in the bottom right corner shows the broader regional context, including the San Joaquin Delta and the San Francisco Bay Area.

Planning vs. Implementing

PLAN

- Vision
- Policies
- Actions
- Map



IMPLEMENTATION

- Spending (CIP)
- Regulations (LDC)
- Programs
- Partnerships

Topic Group

Priority Program

Compact and Connected	1. Mobility 8. Regulations and Processes
Thriving	5. Creative Economy 7. Healthy Austin
Paths To Prosperity	3. Workforce 6. Household Affordability
Nature Into City	2. Water 4. Green Infrastructure

Implementation

Priority Programs Teams

- Department lead(s)
- Project manager / champion
- Staff from multiple departments
- Work program with short-term and ongoing steps
- Report on progress for annual report

Levels of Implementation

Community Engagement

Regulatory Framework

Capital Investments

Organizational Alignment

Partnerships

Land Development Code

Citywide: Murals & Public Art



Austin, Texas May 2014



All photographs taken in Austin by Austinites who participated in the Community Character in a Box effort. To see all photographs taken as part of the CodeNEXT initiative visit: <https://www.dickr.com/photos/1197231268>
10/16/2020 To sign up to find out more information about, participate or host a Community Character in a Box for your neighborhood visit: <http://www.austintexas.gov/department/community-character>

CODENEXT
SHAPING THE AUSTIN WE IMAGINE

Citywide: Building Types

Detached House: Large



This Building Type is a large-sized detached structure on a large-sized lot that incorporates one-unit. It is typically located within a primarily single-family residential neighborhood in a walkable urban setting, potentially near a neighborhood main street.

Detached House: Medium



This Building Type is a medium-sized detached structure on a medium-sized lot that incorporates one-unit. It is typically located within a primarily single-family residential neighborhood in a walkable urban setting, potentially near a neighborhood main street.

Detached House: Compact



This Building Type is a small detached structure on a small lot that incorporates one-unit. It is typically located within a primarily single-family residential neighborhood in a walkable urban setting, potentially near a neighborhood main street. This Type enables appropriately-scaled, well-designed, higher densities and is important for providing a broad choice of housing types and promoting walkability.

Austin, Texas May 2014



All photographs taken in Austin by the City of Austin, the CodeNEXT team or members of the public. To see all photographs a desktop version of the CodeNEXT initiative visit: <https://www.dickr.com/photos/1197231268>
10/16/2020 To sign up to find out more information about, participate or host a Community Character in a Box for your neighborhood visit: <http://www.austintexas.gov/department/community-character>

CODENEXT
SHAPING THE AUSTIN WE IMAGINE

Community Engagement

- Speaker Series
- Newsletters
- Social Media
- MeetUp
- Videos
- Compact & Connected Training



Capital Investments


[Resident](#)[Business](#)[Development](#)[Government](#)[Environment](#)

Department » Capital Planning

[Home](#)[About](#)[Programs](#)[FAQ](#)[Documents](#)

Sign Up for Our Newsletter
email address
[Subscribe](#)

CIVIC
Capital Improvements
Visualization, Information
& Communication


Learn how the
CIP affects you




Capital Planning Office

THE AUSTIN AROUND YOU

The Capital Improvement Program is all around you.

You may not think about it every day, but it's the sidewalk that you walk on, the park at which you meet your friends, even the pipes that carry the water that comes out of your faucet. These are public assets that are maintained by the City of Austin, and they are part of a larger system that affects each and every person's quality of life.

A capital improvement project is the building block of the Capital Improvement Program.

Capital improvement projects may include new construction or renovation of recreation centers and libraries, acquisition of parkland, reconstruction of streets, replacement of water and wastewater lines, creation of urban trails, restoration of creek banks, and the purchase of new City vehicles and information technology networks.

General Obligation Bond Programs

The City funds its Capital Improvement Program in several ways. One way is through voter-approved General Obligation (GO) bonds. GO bonds give cities a tool to raise funds for capital improvement projects that are otherwise not funded by City revenue, such as roads, bridges, bikeways and urban trails and parks.

Long-Range CIP Strategic Plan

The Long-Range CIP Strategic Plan takes a robust, data-driven approach to long-range capital program planning.

TOP CONTENT

- ★ 2012 Bond Program
- ★ Long-Range CIP Strategic Plan
- ★ 2013 Affordable Housing Bond Program
- ★ 2010 Mobility Bond Program
- ★ 2006 Bond Program

CONTACT INFO

Phone: 512-974-7840
Email
Physical Address:
1124 I-35 S.
Austin, TX 78704
[See Map](#)

RECENT NEWS


- June 9, 2015
[Achieving Best-Managed Goals Through Strategic Capital Planning and Portfolio Management](#)
- June 2, 2015
[How the City of Austin is strategically planning for the future](#)
- May 6, 2015
[What is the Capital Improvement Program?](#)



[Helping reach Imagine Austin](#)

LONG-RANGE CIP STRATEGIC PLAN

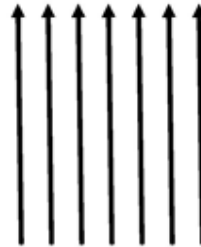
[Bond Oversight Committee](#)


[Our Plan for the Future](#)

IMAGINEAUSTON
Vibrant. Livable. Connected.

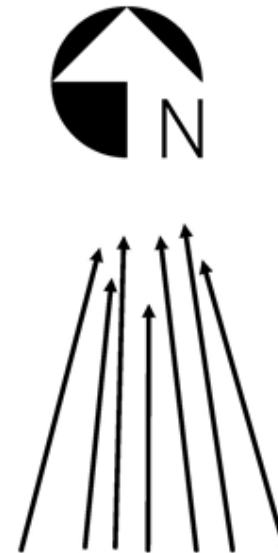
Organizational Alignment



The Past?



The Present?



The Future?

Partnerships



Implementation

The Road Ahead

1. Get to work
2. Act for the whole
3. Expand the growth-shaping toolkit
4. Measure progress and adapt

