



# AUSTIN MOBILITY

## PARKING AND TRANSPORTATION MANAGEMENT DISTRICT

QUARTERLY PUBLIC UPDATE

04.12.16

CREATED FOR THE RMMA PLAN IMPLEMENTATION ADVISORY COMMISSION

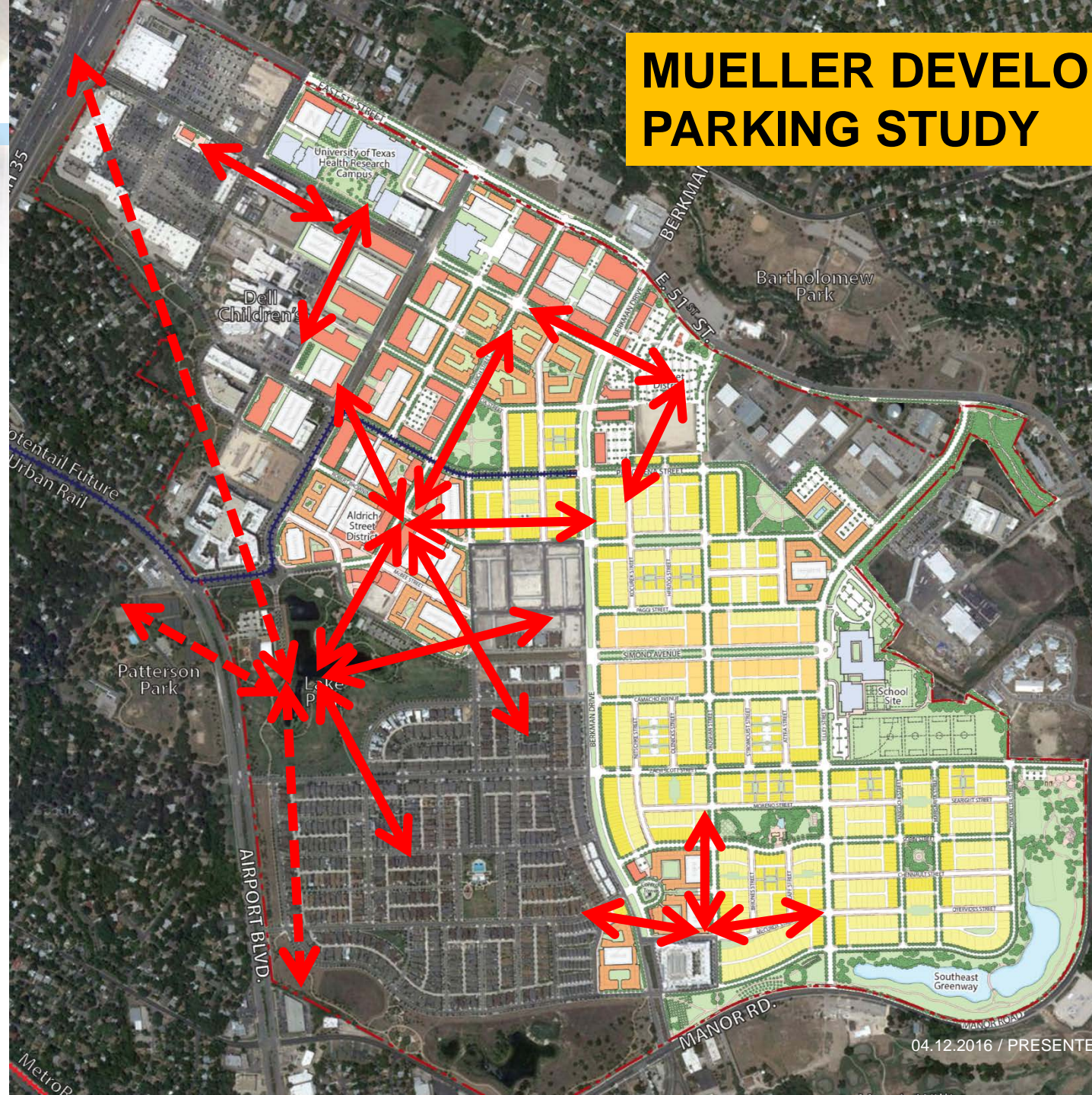


**Austin Mobility**

Making mobility better, together.



# MUELLER DEVELOPMENT PARKING STUDY



Source  
Nelson\Nygaard

04.12.2016 / PRESENTED RMMA PIAC

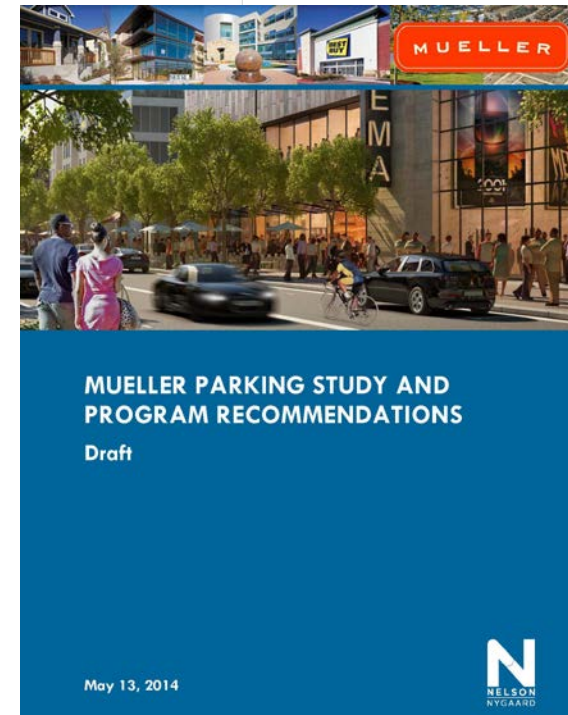






# MUELLER PARKING STUDY RECOMMENDATIONS

- **Parking Management Best Practices:**
  - **Plan ahead**
  - **Coordinate** with stakeholders
  - **Balance** diverse needs
- Build on existing local parking tools and resources
- Create PTMD to comprehensively and proactively plan for and manage public parking at Mueller
- Implement PTMD as pilot at Mueller





# PTMD DEFINITION

## PARKING AND TRANSPORTATION MANAGEMENT DISTRICT

***A PTMD is a defined geographic area that may include a mix of retail, entertainment, commercial, medical, educational, civic and residential uses.***

- Minimum 100 new on-street or 200 paid public off-street spaces

**A percentage of funds from paid public parking within the district is used for projects that confer public benefits within the district.**

- 51% of the net proceeds goes to the PTMD district





# PTMD TOOLS

## Parking

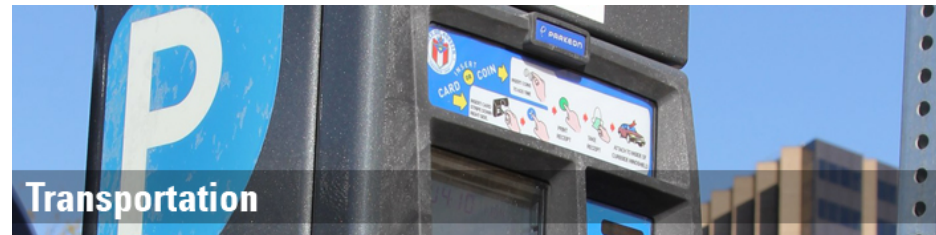
- Paid on-street parking
- Residential Parking Permits
- Coordination of shared parking (office & retail)
- Management for safety and visibility (e.g. Designating No Parking spaces)

## Monitoring/Enforcement

- ATD and/or APD

## Designation of On-Street Zones

- Paid or short-term parking
- Customer / Commercial Service
- Valet
- Car sharing
- Ground Transportation (taxi, bus, pedicab)
- Bus loading/unloading





# POTENTIAL PTMD REVENUE PROJECTS

## Eligible improvements might include:

- Park Maintenance and Improvements
- Signage and wayfinding
- Public Right of Way Sidewalk, Landscaping, Street Furniture, Lighting improvements
- Increased District Maintenance
- Public Art



Mueller Lake Park



Credit: Tampa's Parking Dept.



COA Great Streets



Credit: COA AIPP



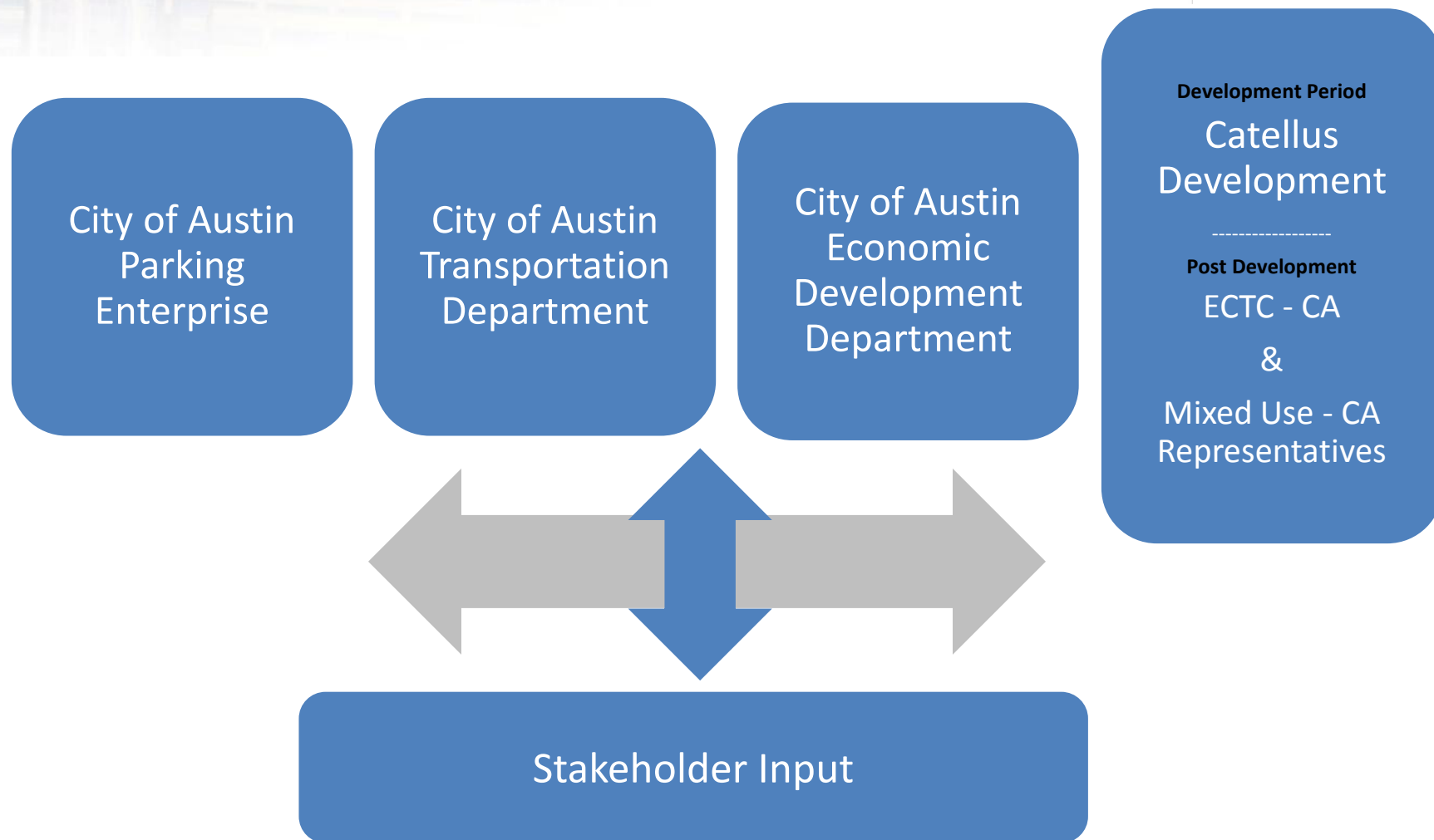


# MUELLER PTMD: BOUNDARY





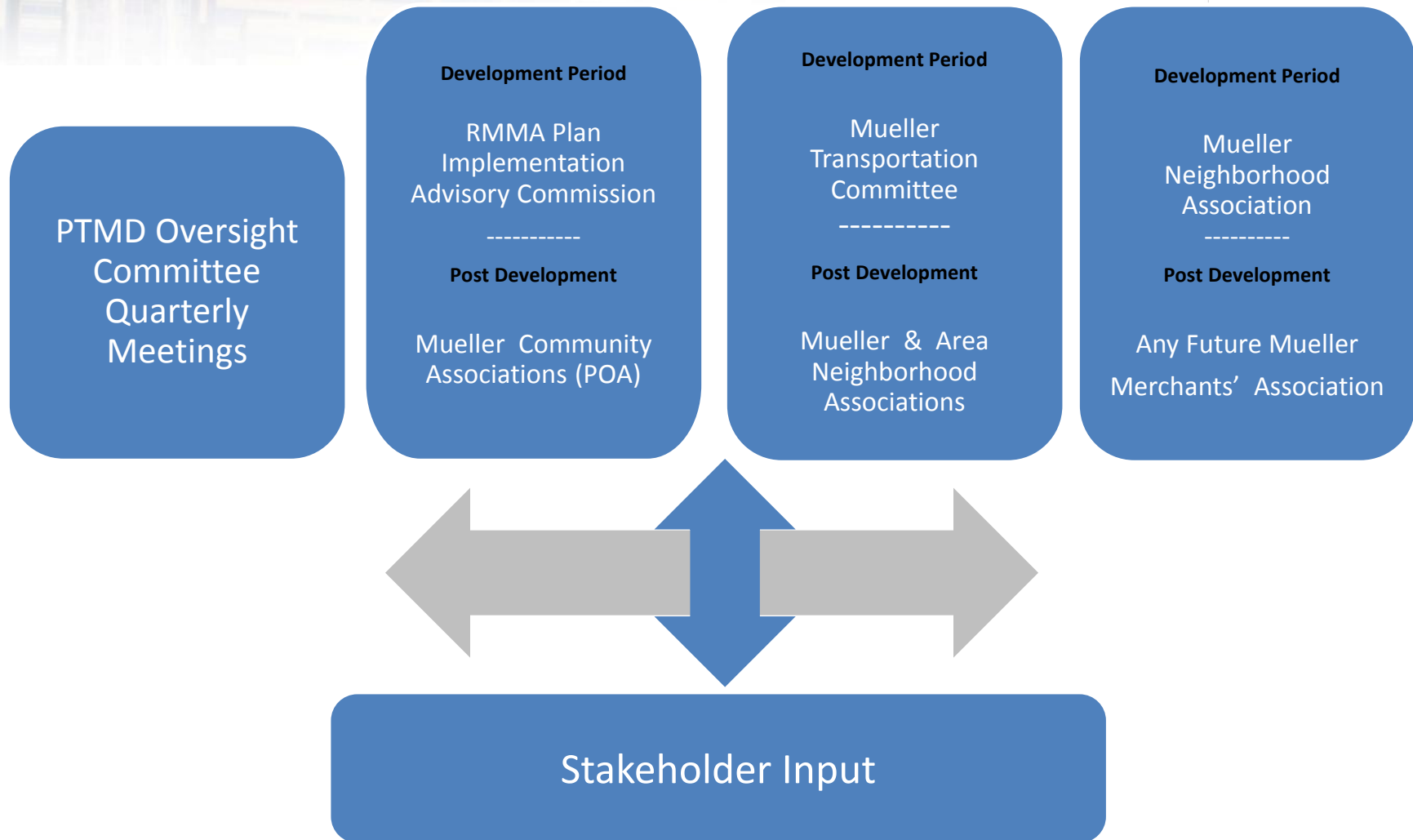
# MUELLER PTMD: OVERSIGHT COMMITTEE



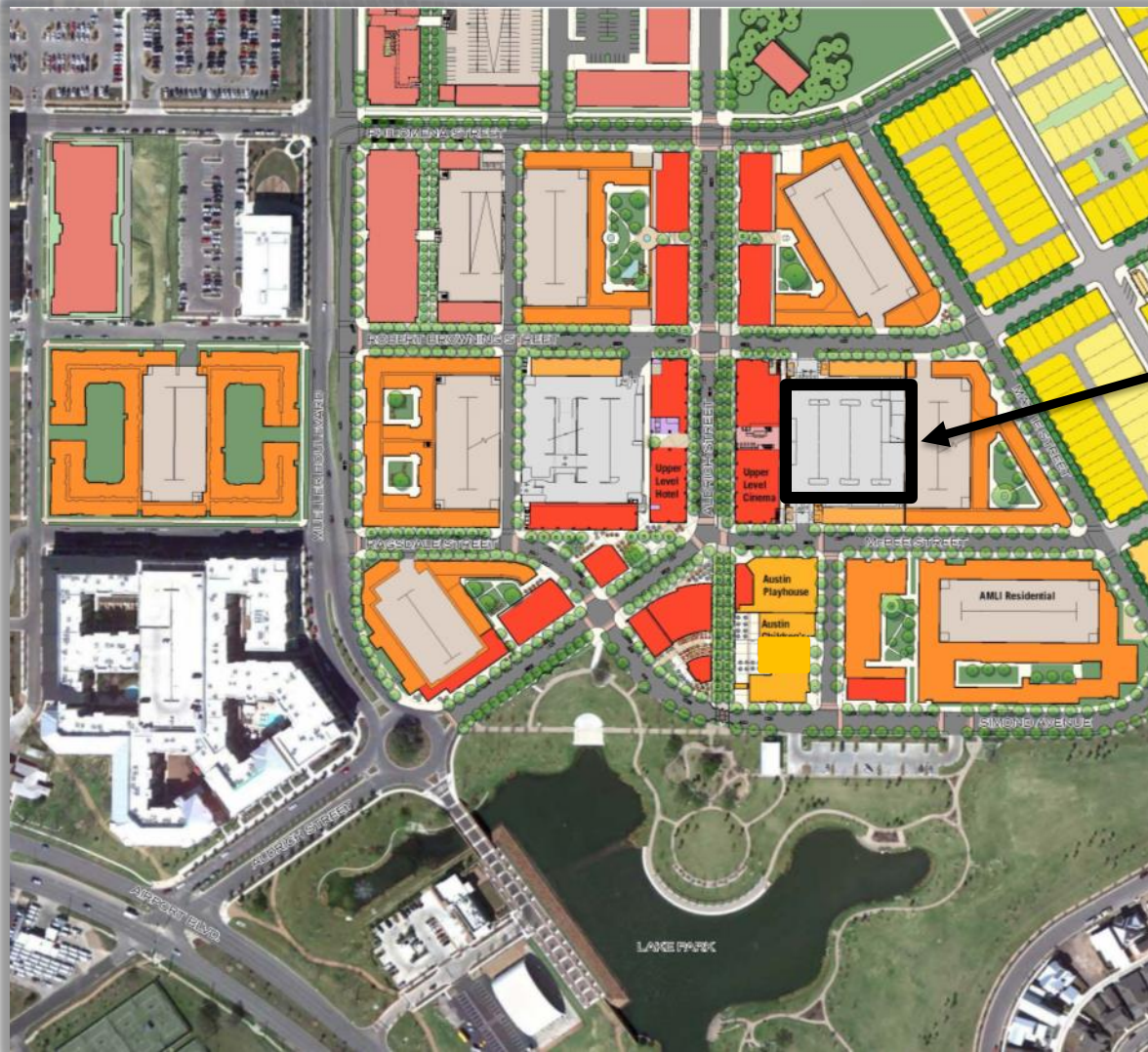




# MUELLER PTMD: FEEDBACK PROCESS



# TOWN CENTER PARKING NEEDS

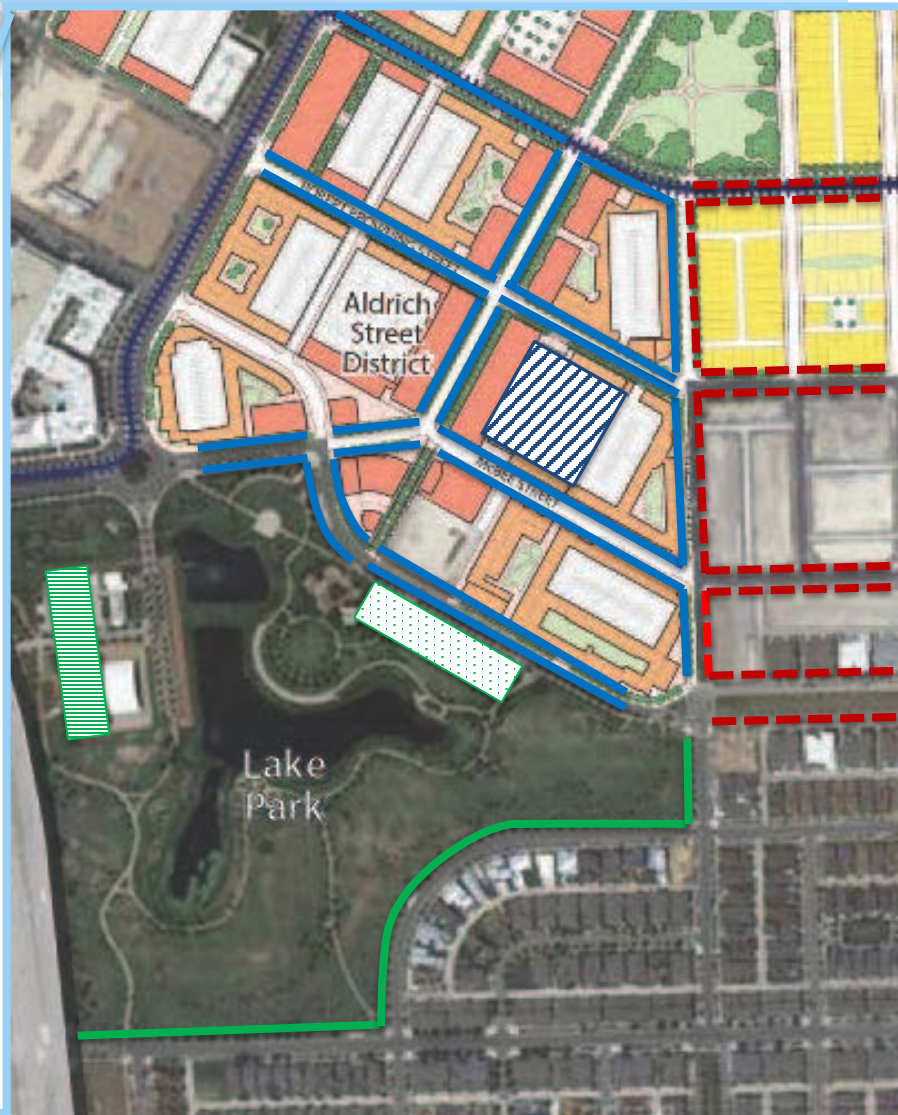






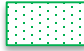

- Residential and office blocks have dedicated parking
- Public district parking
  - The Thinkery
  - Alamo Movie Theater
  - Retail
  - Restaurants
  - Hotel (future)
  - Mixed-use residential and office
- Lake Park and other park parking





# TOWN CENTER AREA PARKING OVERVIEW



-  Town Center Paid On-Street Parking – phased implementation
-  District Parking Garage – validation to start with on-street paid parking
-  Residential Permit Parking (evening hours/weekends)
-  Free On-Street Parking
-  Free Lake Park Lot
-  Free Mueller Central and Hangar Lots – currently available pending future redevelopment







## COMMUNICATIONS PLAN

### Audiences:

- Park and Aldrich Street Visitors
- Surrounding Neighborhoods
- Aldrich Street & surrounding Mueller residents
- Austin City Council Offices
- Other City of Austin Staff

### Communication Tools:


- Signs
- Flyers
- Newsletters
- Frequently Asked Questions Handout
- Email
- Personal Contact
- Mueller Central
- Web site





# MUELLER PAID PARKING IMPLEMENTATION


## PTMD Information – MuellerAustinOnline.com



[Login](#) | [Register](#)

Welcome

- Home
- About Us
- Business Directory
- Committees
- Community Calendar
- Community Documents
- Community Gardens
- Contact Us
- Event Requests
- FAQs
- Fitness Groups
- Friends of the Prairie
- Homes for Sale/Rent
- Modifications Process
- Parking and Transportation Management District
- Parks



### Parking and Transportation Management District

The ordinance to initiate the Mueller Parking Transportation Management District (PTMD) was passed February 12, 2015 by the Austin City Council with Ordinance 20150212-038 and includes the full 700 acre Mueller Development. A copy of the Mueller PTMD application can be found [here](#). This application includes extensive details on what the PTMD proposes. The first phase of the PTMD implementation for parking controls will include Residential Permit Parking (RPP) for some areas in Mueller.

General PTMD questions can be directed to [ResidentialParking@AustinTexas.gov](mailto:ResidentialParking@AustinTexas.gov) and please place Mueller in the subject line.

#### Residential Parking Permits (RPP)

Eligible residents may continue to purchase their parking permits at Mueller Central during business hours (Tuesday through Friday, 9am to 5pm or Saturdays, 9am to 3pm). Homeowners will need proof of residency such as a driver's license and utility bill and can purchase up to two hang tags at \$15 per tag with cash or check. Tenants must also bring a signed agreement from their landlord authorizing use of the residence's parking permits. You can check the current eligibility map [here](#).

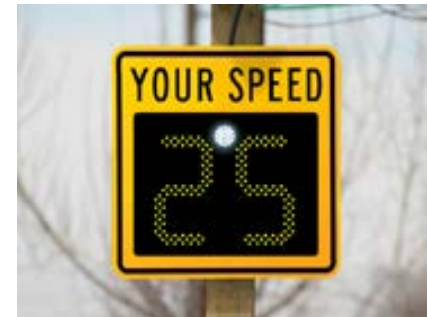
The initial RPP permit hours will be in effect on all the streets in the zone from 4 pm to 10 pm on weekdays (Monday through Friday), and will include Saturday 8 am – 5 pm on Mattie, McBee and Simond. Times may





# CURRENT MUELLER TRANSPORTATION ITEMS

- **Austin Transportation Department Pilot Programs**
  - Potential pedestrian-activated crosswalks
  - Potential dynamic speed signs
- **One-Way Alley Conversion**
- **Aldrich Roundabout Modifications**
- **Berkman Drive Update**
  - Future traffic signal at Berkman/Barbara Jordan intersection
  - Working Group







# ONGOING PUBLIC FEEDBACK OPTIONS

## Questions/Concerns from Public:

- Submit Mueller transportation items via the City's 3-1-1 system, either through the mobile app, City website, or by calling 3-1-1  
  
or
- Email *RPP* Specific Questions to [ResidentialParking@austintexas.gov](mailto:ResidentialParking@austintexas.gov)  
Put "Mueller" in the subject line  
  
or
- Email *Other Parking* Questions to [parking@austintexas.gov](mailto:parking@austintexas.gov)  
Put "Mueller" in the subject line

**Next regular Mueller PTMD Update:  
Mueller Transportation Committee Meeting 08/24/2016 (*tentative date*)**

