



## Roy G. Guerrero Park Bridge and Trail Briefing

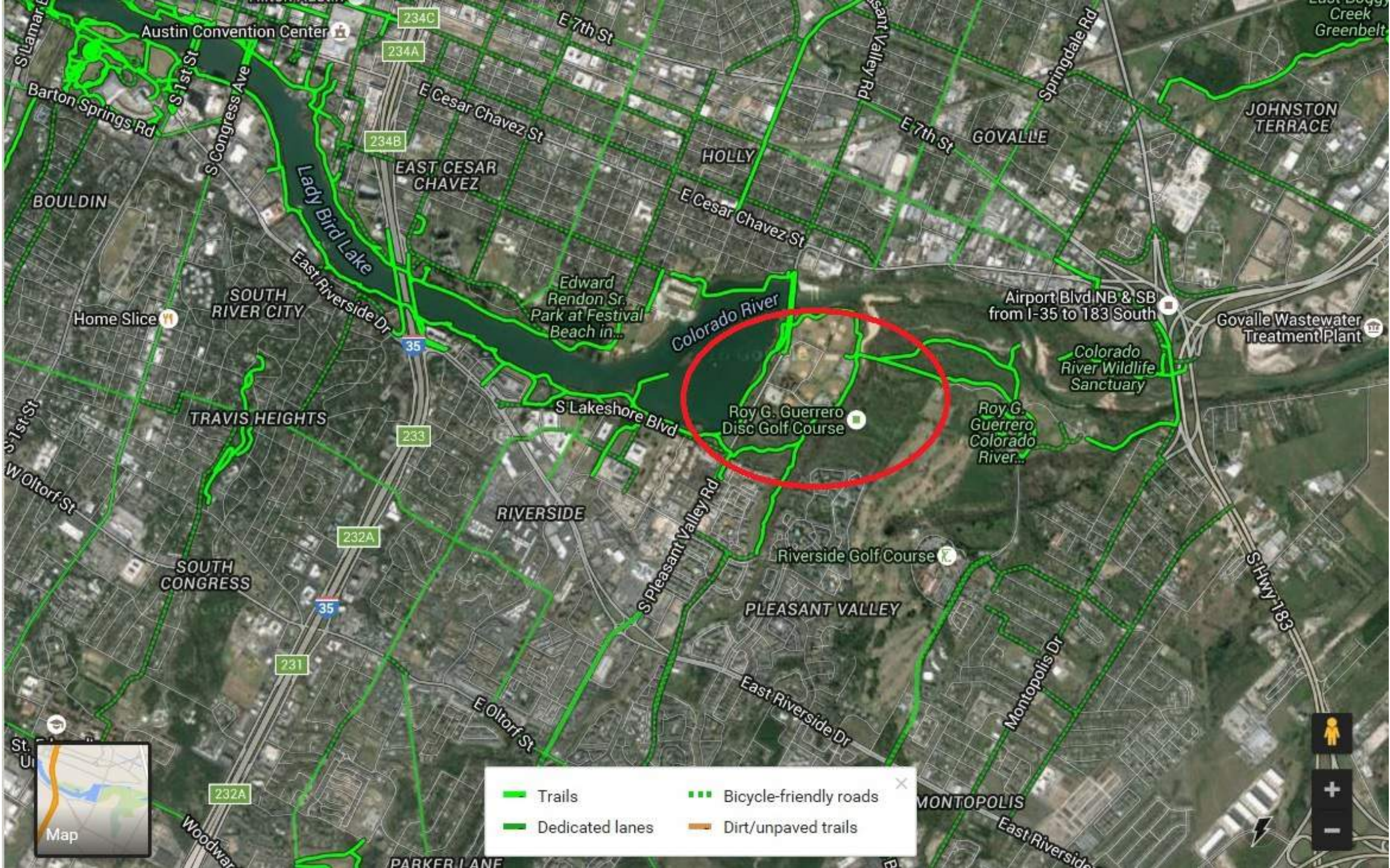
Fred Fuller, PLA, Parks and Recreation Department

Jules Parrish, MWR, Public Works Department

Bicycle Advisory Council

June 21, 2016













Memorial Weekend Flood 2015



**NOTICE**

Trail Closed

No Entry

For information

472-126

AUSTIN  
PARKS AND  
RECREATION

**NOTICE**

**TRAIL CLOSED**

**BRIDGE OUT**

**DO NOT ENTER**



**October 2014**



**July 2015**







Halloween Weekend Flood 2015

November 3, 2015

# Our Partners in the Process

- Austin Water Utility
- City of Austin, Office of Homeland Security and Emergency Management
- City of Austin Risk Management
- City of Austin Watershed Protection Department
- Federal Emergency Management Agency (FEMA)
- US Army Corps of Engineers (USACE)





February 3, 2016

Google earth





March 4, 2016



# Extreme Hazards



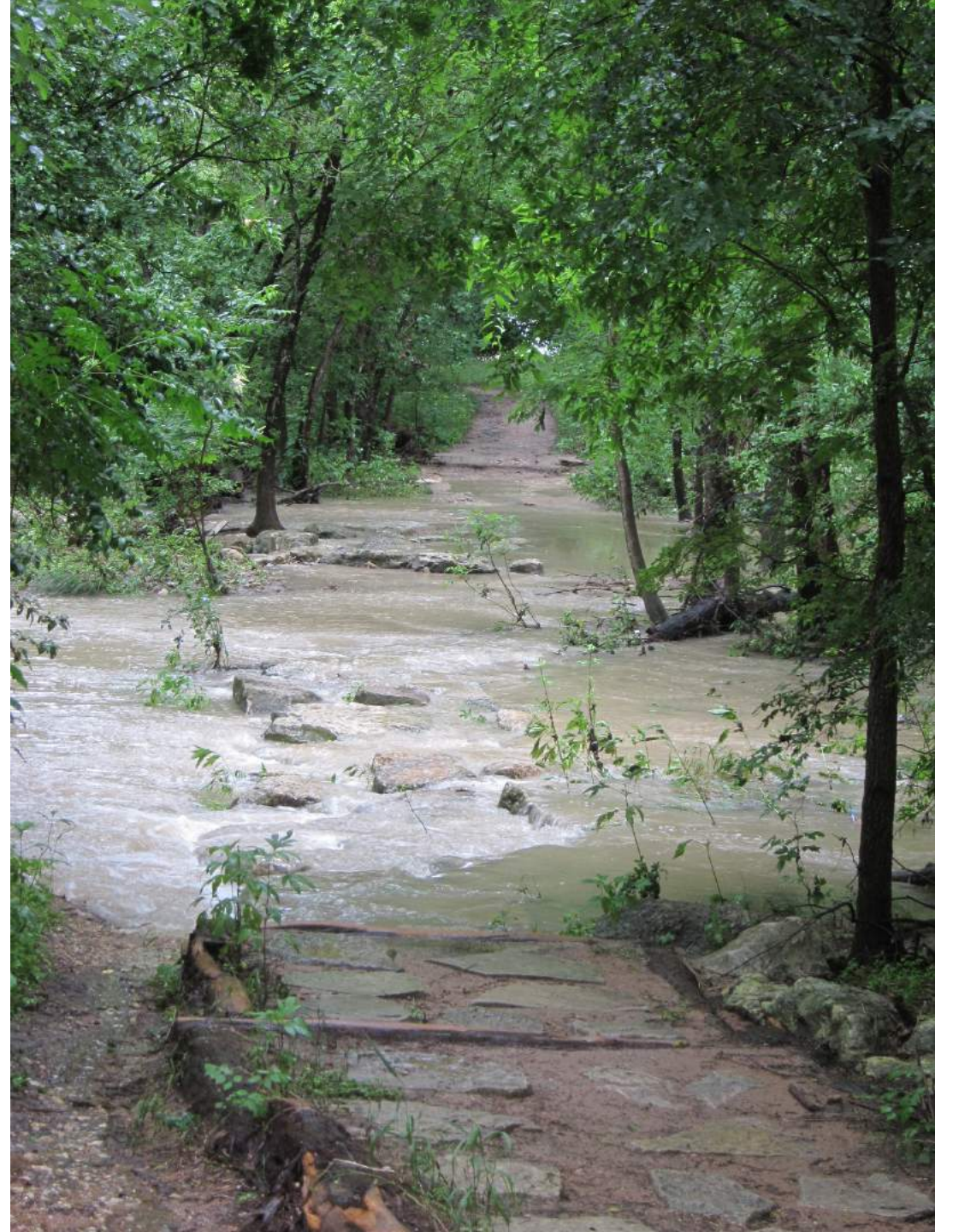














# Bridge Closure and Trail Detours

- Responding to changing conditions.
- Meander belt scour leads to trail closure.
- Trail re-route in progress.





Trail Re-Route





### Legend

- Detour Signage
- ~ Trail Closure
- ~ Trail Detour
- ~ Alt Route via Roadway
- PARD Trails*
- Existing Trails
- City of Austin Parks



0 200 400  
Feet

This map is for informational purposes only and does not constitute a legal document. It is not intended to be used for legal purposes. The City of Austin Parks & Recreation Department is not responsible for any errors or omissions on this map. The City of Austin Parks & Recreation Department is not responsible for any damages or injuries resulting from the use of this map. The City of Austin Parks & Recreation Department is not responsible for any damages or injuries resulting from the use of this map.





**AUSTIN PARKS & RECREATION**  
City of Austin Department of Public Works

**Legend**

- Detour Signage
- ▬ Barricades
- ▬ Trail Closure
- ▬ Trail Detour
- ▬ Alt Route via Roadway
- PARD Trails**
- ▬ Existing Trails
- ▬ Drainage
- ▬ Creeks
- ▬ City of Austin Parks



This project is the latest in a series of projects to improve the park's infrastructure and enhance the visitor experience. The project includes the construction of a new trail, the installation of new signage, and the removal of old signage. The project is expected to be completed by the end of the year. The project is a part of the City of Austin's ongoing efforts to improve its parks and recreation facilities.



June 7, 2016













# Next Steps

- Demolition and Removal of Bridge.
- Updated flood plain model by August 31, 2016.\*
- Bridge Design proceeds immediately thereafter.
- Advertise and Bid/Award in Fall, 2017.
- Bridge Construction in 2018.
- Construction will require approximately 8 months (weather permitting\*).





Q & A