

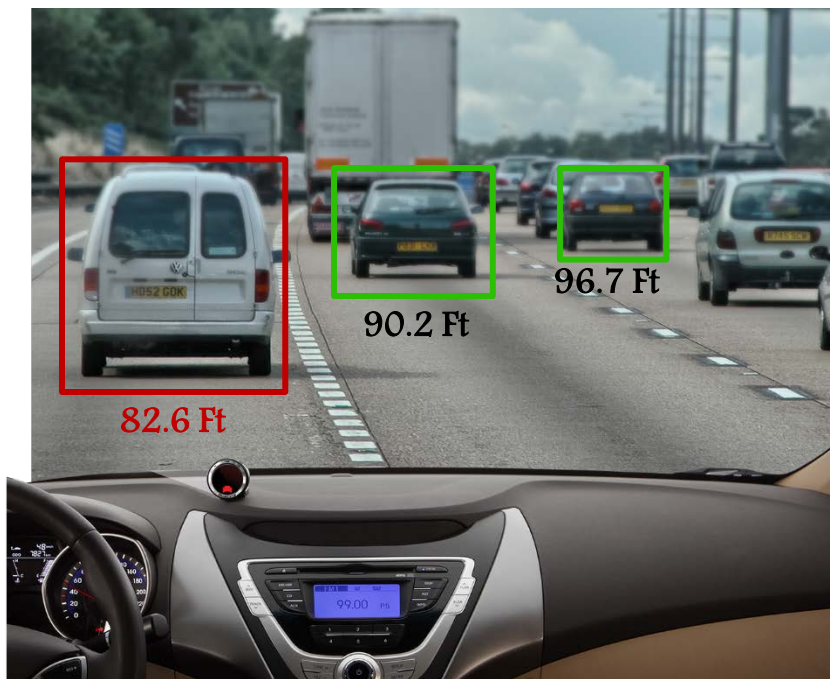
# Mobileye

## What Is It & How It Works

**MV Austin, TX #269**

**Presented By: John Guignon**

- Mobileye - Is the global pioneer and leader in the development of collision avoidance and autonomous driving systems based on artificial vision technology.
- Unparalleled Accuracy –  
Optimizes complex algorithms.  
Mobileye's Forward Collision Warning algorithms have demonstrated 99.99% accuracy.



- In a effort to reduce the frequency of unsafe acts and unsafe behaviors, MV Transportation deployed Mobileye during November, 2015 in Philadelphia, PA – Division #078
- Currently, MV Transportation has deployed 310 Mobileye units. An additional 5,000 units are slated to be deployed by December 2017.



# Mobileye Pedestrian Collision Warning





# Mobileye Lane Departure Warning



## Mobileye Headway Monitoring & Warning



# Mobileye Forward Collision Warning

