

## MATTHEWS RESIDENCE

### 1102 CHARLOTTE

The main criteria for this design are: aesthetics (contemporary architecture appropriate for today and compatible with existing rooflines and designs in Clarksville); security (primary issue with my living alone); easy maintenance and eco-designed; and appropriate size/scale for the site and the neighborhood.

The house is about 2,200 SF, 2 BR with study, 2.5 baths. The second bedroom/bath is above the garage.

The front wall will serve as a privacy screen and help create the interior courtyard. The house/wall are 25 feet from the street on Charlotte and will sit farther back than houses on either side.

Exterior materials will include a combination of windows, weathered metal, wood or similar natural materials.

In addition to existing trees, Japanese maples will be planted in front on Charlotte and more trees and other native landscaping in the back and side yards.

The entire house has been placed in and among the trees, so that it is essentially hidden.

No variances will be requested, and the house will conform to code.

This will be the third and final house designed by Architect Dick Clark on the adjoining properties he originally owned and platted in the early 1980s. It should be another attractive addition to the Clarksville National Register Historic District.





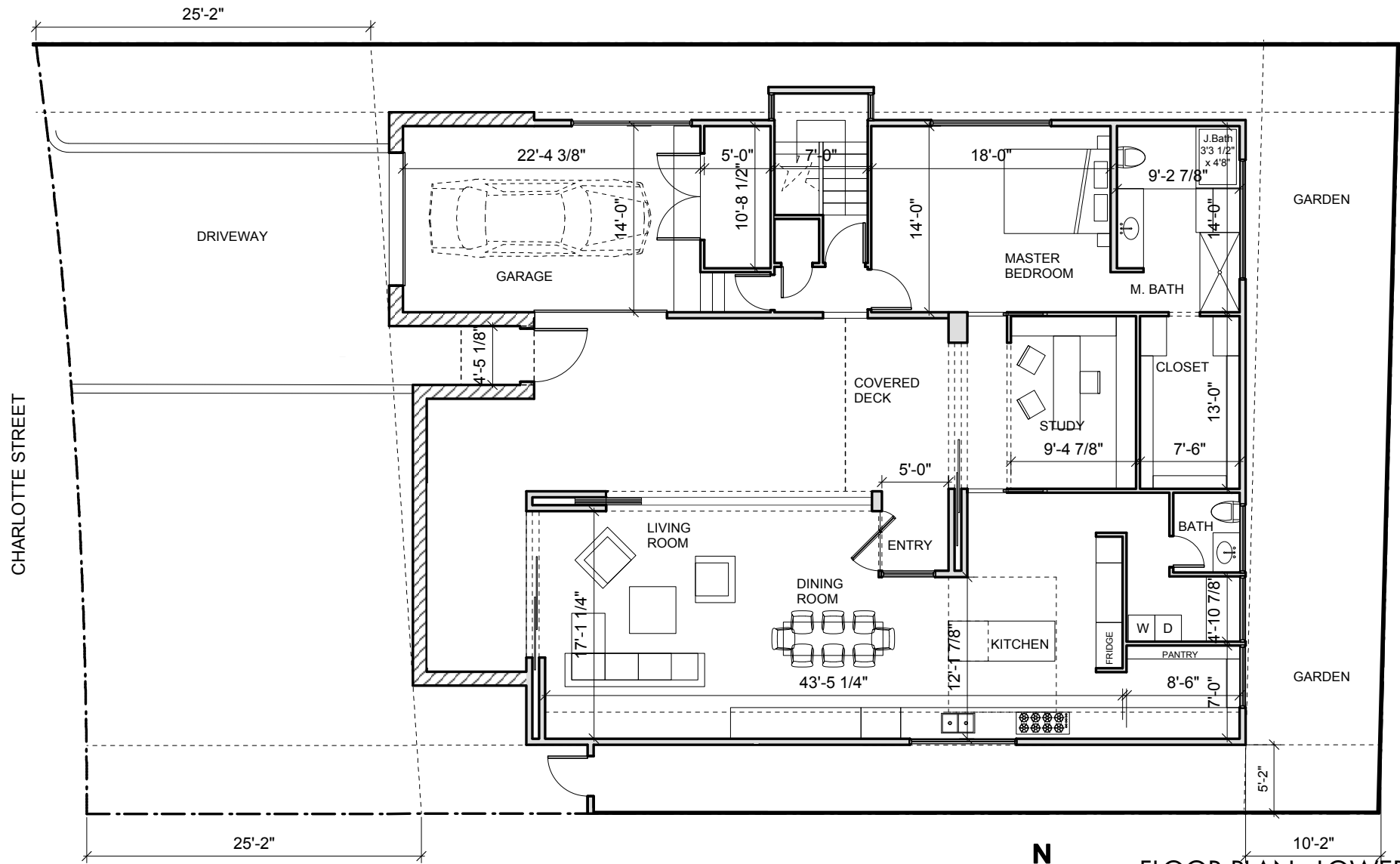
MATTHEWS RESIDENCE



SEAL

Dick Clark - Texas Architect  
Registration # 11246  
02-24-2012

This document is incomplete and  
may not be used for regulatory  
approval, permitting or construction.



1

FLOOR PLAN - LOWER LEVEL

Scale: 1/8" = 1'-0"



2

FLOOR PLAN - UPPER LEVEL

Scale: 1/8" = 1'-0"

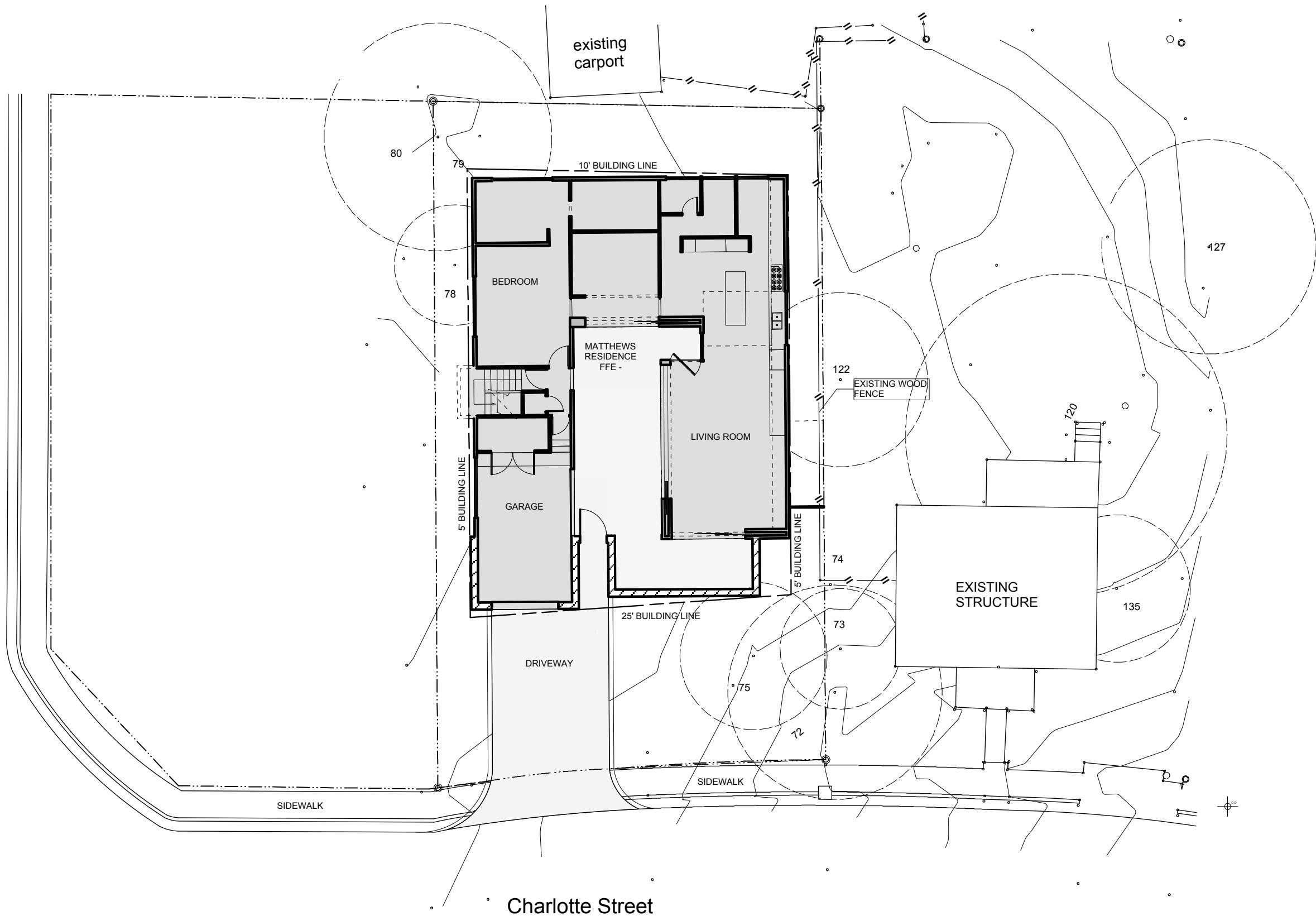
DRAWN BY  
SP

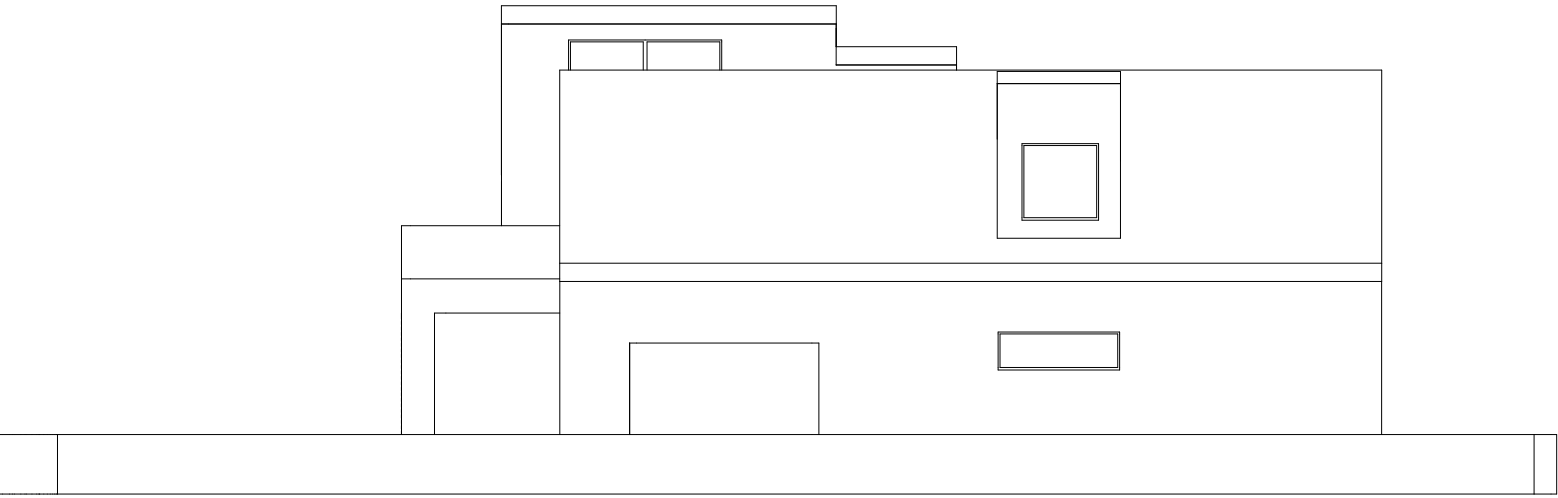
SHEET

A1.1a

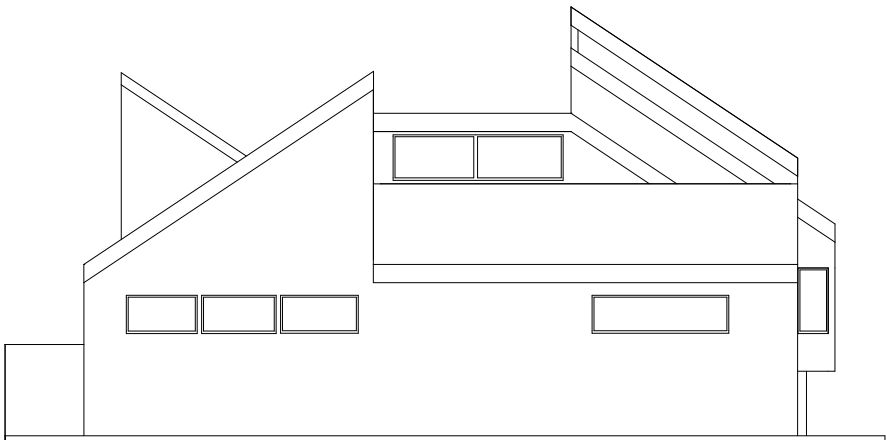
CAUTION: DO NOT SCALE DRAWINGS  
THESE DRAWINGS ARE THE PROPERTY OF  
THE ARCHITECT AND MAY ONLY BE USED  
IN CONJUNCTION WITH THIS PROJECT

West 11th Street

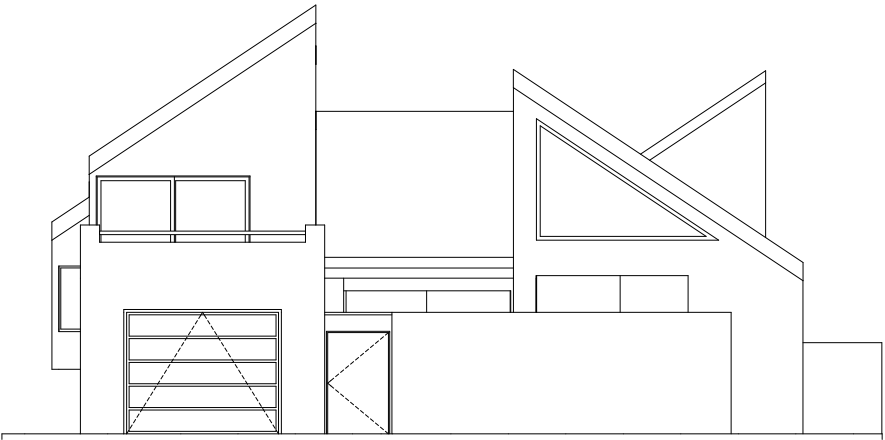




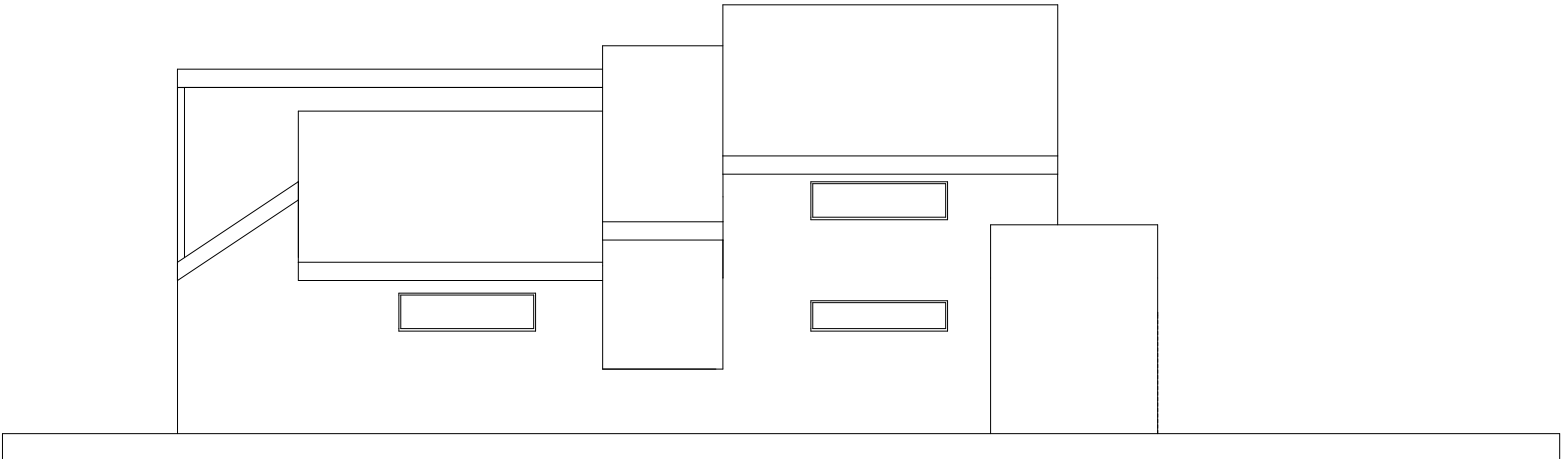
1 NORTH ELEVATION  
SCALE: 1/8" = 1'-0"



3 WEST ELEVATION  
SCALE: 1/8" = 1'-0"



2 EAST ELEVATION  
SCALE: 1/8" = 1'-0"



4 SOUTH ELEVATION  
SCALE: 1/8" = 1'-0"