



MEMORANDUM

To: Parks Board Members  
From: Mike Kelly, Watershed Protection Department  
Date: April 11, 2000  
Re: Bartholomew Park

Des: June  
Bid  
Const: Sept → Dec

As Project Manager of the Bartholomew Park Stream Restoration Project, I request the Parks Board approval of the plans presented.

The Watershed Protection Department proposes to stabilize the eroding stretch of Tannehill Branch that runs through Bartholomew Park from E. 51<sup>st</sup> Street to the detention pond 1500 feet upstream. Our goal is to stabilize the eroding streambanks and prevent future erosion while increasing the natural integrity of the stream corridor. Our stabilization techniques include channel cut and fill to accommodate the increased flows from urbanization; retaining a natural channel bottom with pool and riffle sequences; stabilizing the streambanks with biotechnical techniques (use of native boulders, soil, vegetation and degradable erosion control fabrics).

The Watershed Protection Department has completed similar projects in Shipe Park, Givens Park, Reed Park and Gillis Park. We believe the results speak for themselves. (See attached photos)

Our schedule is as follows. Pending Parks board approval of the preliminary design, plans will be finalized and prepared for bid by May 1, 2000. We hope to advertise and open bids by July 1. Construction is scheduled to commence by September 1, 2000 and be completed by January 1, 2001.

Watershed Protection Department will need PARD staff assistance in following prescribed maintenance regime for newly landscaped riparian area.



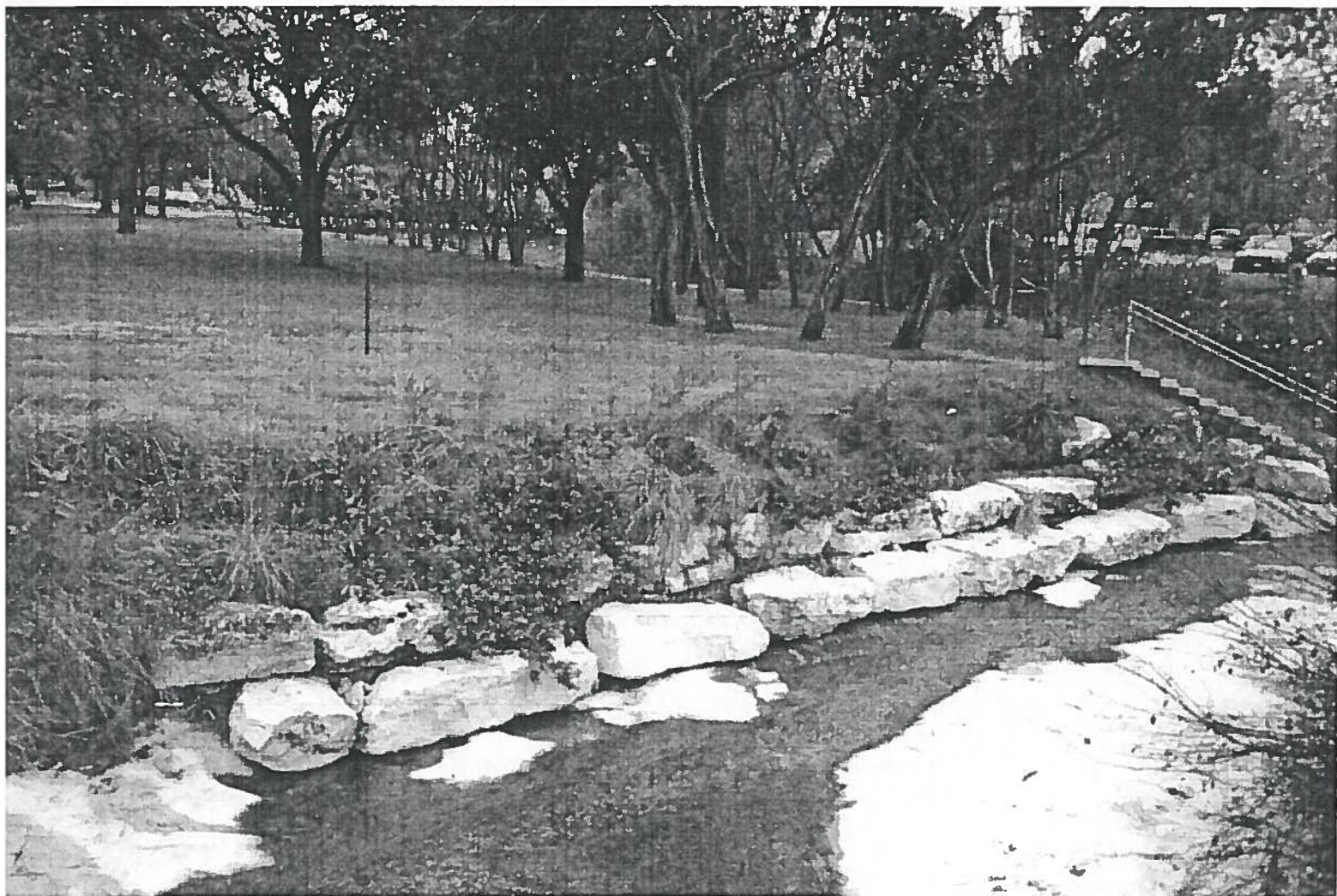












## TRANSPORTATION AND NATURAL RESOURCES

JOSEPH P. GIESELMAN, EXECUTIVE MANAGER



411 West 13th Street  
Executive Office Building, 11th Floor  
P.O. Box 1748  
Austin, Texas 78767  
(512) 473-9383  
FAX (512) 708-4697  
Engineering Services FAX (512) 708-4649  
March 10, 2000

Mr. Stuart Strong  
City of Austin Parks and Recreation  
200 S. Lamar  
Austin, Texas 78704

RE: Sprinkle Road and Bridge Project

Dear Mr. Strong:

Thank you, for meeting me concerning the Sprinkle Road and bridge project for Travis County.

In the documents forwarded to your office are the project plans for the area of Sprinkle Road in front of the City of Austin Parks property. The flood plain level shown on Page 22 of the plans indicate the 100 year flood plain after completion of the new bridge. Prior to completion, the current bridge floor is at or just under the 100 year flood plain. Further, the current bridge is about 24 feet wide. The new bridge will be 32 feet wide. It will still be two lanes, but a much safer bridge.

The new land out of the City of Austin Parks acquisition will allow the road to be straightened enough to take out the blind spot that now exists.

All of these improvements will make Sprinkle Road safer to travel without removing the aesthetics of a winding road.

Please let me know how to proceed so the transfer of the needed 0.303 acres can be made from City of Austin Parks to Travis County. This project is ready to go out for construction bid as soon as the transfer can be made.

Respectfully,

A handwritten signature in dark ink, appearing to read "James A. Meads", is written over a horizontal line.

James A. Meads, MAI  
Right-of-Way Negotiator

CC: Chidi N'Jie, P.E.  
Greg Chico ROW Manager

**EXHIBIT "A"**

The City of Austin  
To  
County of Travis  
(Additional Right-of-Way)  
Sprinkle Road,  
Out of the James O. Rice Survey No. 31  
Travis County, Texas

**METES AND BOUNDS DESCRIPTION**

ALL THAT CERTAIN PARCEL OR TRACT OF LAND BEING A 0.303 ACRE PORTION OF THAT CERTAIN TRACT CALLED 67.555 ACRES IN A DEED TO THE CITY OF AUSTIN, OF RECORD IN DOCUMENT # 2000001160, TRAVIS COUNTY OFFICIAL PUBLIC RECORDS, SAID 0.303 ACRE TRACT BEING MORE PARTICULARLY DESCRIBED BY METES AND BOUNDS AS FOLLOWS:

BEGINNING at an iron rod found in the northwest R.O.W. line of sprinkle Road and southeast line of said City of Austin tract for the southwest corner and POINT OF BEGINNING hereof, and from which point the southeast corner of said City of Austin tract bears S22°05'19"W at a distance of 216.29 feet

THENCE with the proposed northwest R.O.W. line of Sprinkle Road, the following 4 calls:

- 1.) N21°49'10"E for a distance of 131.01 feet to a ½" capped iron rod set stamped "RPLS 3693"
- 2.) N37°11'08"E for a distance of 177.77 feet to a ½" capped iron rod set stamped "RPLS 3693"
- 3.) N42°12'13"E for a distance of 112.75 feet to a ½" capped iron rod set stamped "RPLS 3693"
- 4.) N61°24'43"E for a distance of 152.16 feet to a ½" capped iron rod set in the northeast line of said City of Austin tract for the north corner hereof

THENCE with the northeast line of said City of Austin tract and southwest line of a tract described in a deed to Sondra McTaggart, of record in Volume 13069, Page 1649 of the Real Property Records of Travis County, Texas, S38°17'41"E for a distance of 18.95 feet to the east corner of said City of Austin tract for the east corner hereof

THENCE with the northwest R.O.W. line of Sprinkle Road and southeast line of said City of Austin tract, the following 4 calls:

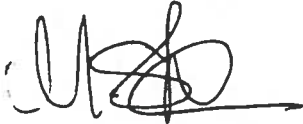
- 1.) S61°12'19"W for a distance of 52.50 feet to an angle point, and from which point an iron pipe found bears S26°41'E, 0.72 feet

2.) S56°06'19"W for a distance of 91.01 feet to an angle point

3.) S47°12'19"W for a distance of 82.23 feet to a 1/2" iron rod found at an angle point

S35°36'19"W for a distance of 335.52 feet to the POINT OF BEGINNING hereof and containing 0.303 acre of land, more or less.

According to previous surveys performed by the undersigned on the ground of the property described herein; see attached plat, Exhibit "B", Plan No 000029A, hereby made a part hereof. Description revised March 14, 2000 to reflect City of Austin as current owner.



Michael Samford, R.P.L.S. 3693



REFERENCES

TCAD Parcel No. 02-3431-01-06

Austin Grid N-29

NAD 83 CEN.TEXAS

CONTROL PROVIDED BY TRAVIS COUNTY PITD



MICHAEL SAMFORD, R.P.L.S. 3693



## MEMORANDUM

**TO:** Jesus Olivares, Director,  
Parks and Recreation Department

**FROM:** Peter Rieck, Director  
Department of Public Works and Transportation

**DATE :** April 6, 2000

**SUBJECT:** Request for Dedication of ROW Adjacent to Parkland  
South First Street Extension, Phase II  
CIP number 8400-607-8016

The Department of Public Works and Transportation is requesting the dedication of Right of Way (ROW) for the construction of the South First Street Extension, Phase II, CIP No 8400-607-8016 project. Attached is the following documentation:

- General Location Map
- Site Plan, see sheet G3A: Index and Bench Marks
- Plan and Profile, see sheet A5: Plan & Profile from STA 85+50 to Sta 98+00
- Plan and Profile, see sheet A4: Plan & Profile from STA 73+00 to Sta 85+50
- Tree Survey, see Sheet G8: Tree Log
- Field Notes

From these documents you will note that the requested ROW contains a total of 1.177 acres. Also, as requested by the Land and Facilities Committee, the plan and profile sheet A5 is showing the median cut and driveway entrance requested by the committee. These items have been incorporated into the plans for the construction of the above noted project. Tree mitigation, as part of the site restoration process, will also be included during construction.

The completed roadway improvements will include the construction of approximately 11,200 linear feet within a 120 ft ROW from Slaughter Lane to FM 1626. The Phase II portion of the overall project consists of the construction of approximately 7,000 linear feet of a four lane divided street, including bike lanes, sidewalks, drainage system improvements and bridge improvements across Nichols Creek. The South First Street Extension, Phase II project will provide street and drainage improvements from Slaughter Lane to Slaughter Creek. This is a high profile fast track project that once completed will provide street access to the new Charles Akins High School from Slaughter Lane.



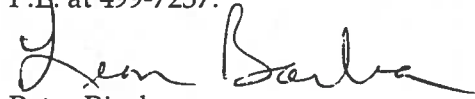
South First Street Extension, Ph II  
Dedicated ROW adjacent to parkland  
April 6, 2000  
Page 2

The proposed routing is shown on the General Location Map. The taking of parkland comprises a small section of the Mary Moore Searight Park located adjacent to and along the existing street ROW. All reasonable planning efforts have been taken to minimize harm to the area. All construction and site restoration for the project will be completed in accordance with the Standard Specifications and Construction Standards of the City of Austin. All construction and site restoration for that portion of the project within the parkland will also be completed in accordance with PARD's Construction in Parks Specifications.

This project will also include other real estate acquisitions, which will improve the City's access to that portion of the parkland identified as Mary Moore Searight Park. Median break within the street Right of Way and driveway access adjacent to the parkland will provide future access to the park from South First Street.

We would request that the necessary documentation be prepared for consideration of this request by the Parks and Recreation Board. If possible, we would appreciate the opportunity to make presentations to the Land and Facilities Committee and the Parks and Recreation Board in April, 2000.

If you have any further questions or need additional information, please contact Dolores Duran, P.E. at 499-7237.

*for*   
Peter Rieck  
Director

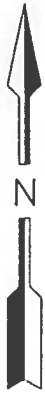
#### DEPARTMENT OF PUBLIC WORKS AND TRANSPORTATION

#### Attachments

xc: Marcia Conner, Assistant City Manager  
Dolores Duran, Project Manager

SOUTH FIRST STREET EXTENSION  
FROM SLAUGHTER LANE TO FM 1626

C.I.P. PROJECT NO. 8400-607-8016



MARY MOORE SEARIGHT  
METROPOLITAN PARK

PROPOSED SOUTH 1st.  
STREET EXTENSION

W. SLAUGHTER CREEK  
(NICKEL BRANCH)

PROPOSED SOUTH 1st.  
STREET 16' WATER LINE

W. SLAUGHTER CREEK

PROPOSED CHARLES  
AKINS HIGH SCHOOL  
BY A.I.S.D.

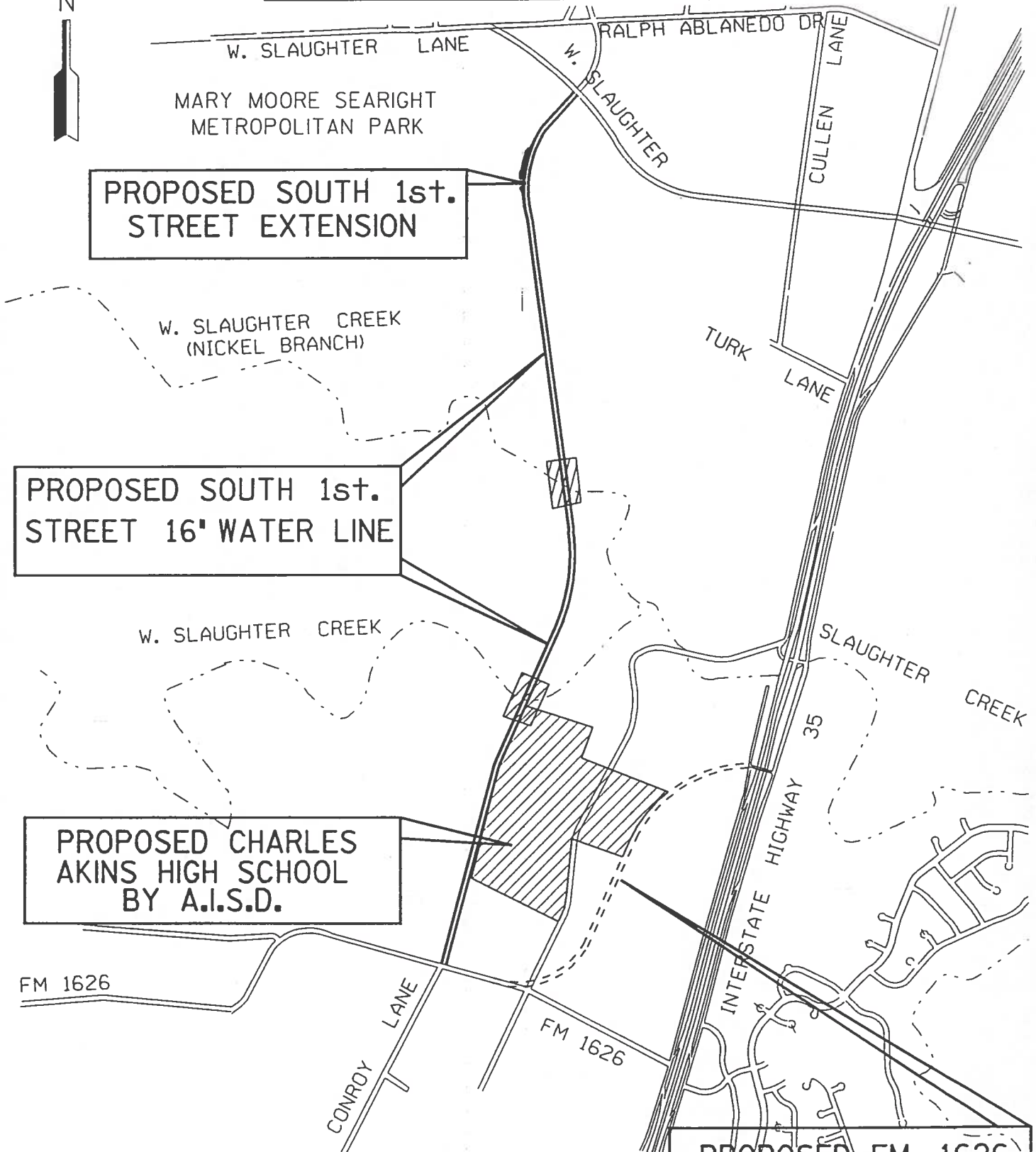
FM 1626

CONROY LANE

FM 1626

PROPOSED FM 1626  
REALIGNMENT  
BY TxDOT

GENERAL LOCATION MAP





**EXHIBIT "A"**  
**METES AND BOUNDS**  
**DESCRIPTION**

**AUSTIN PARKS AND  
RECREATION DEPT.  
TO  
THE CITY OF AUSTIN  
(STREET R.O.W.)  
SOUTH 1ST ST. EXTENSION**

**BEING 1.177 ACRES OF LAND, MORE OR LESS,  
OUT OF THE S.F. SLAUGHTER SURVEY NO. 1,  
ABSTRACT NO. 20 IN TRAVIS COUNTY, TEXAS,  
AND BEING PART OF THAT CERTAIN 4.527 ACRE  
TRACT OF LAND CONVEYED TO THE CITY OF  
AUSTIN IN VOLUME 11532, PAGE 2203, AND  
PART OF MARY MOORE SEARIGHT PARK AS CONVEYED  
TO THE CITY OF AUSTIN BY DEED RECORDED IN  
VOLUME 11427, PAGE 1721 OF THE REAL PROPERTY  
RECORDS OF TRAVIS COUNTY, TEXAS, SAID 1.177  
ACRES OF LAND BEING MORE PARTICULARLY  
DESCRIBED BY METES AND BOUNDS AS FOLLOWS:**

Beginning for reference at a 1/2" iron pipe found on the north line of that certain 2.450 acre tract of land conveyed to the City of Austin (for street r.o.w. purposes) by deed recorded in Volume 11532, Page 2210, Travis County Real Property Records, at the common southerly corner between the Slaughter-First Ltd. tract of land described in Volume 4913, Page 538 and the Donald L. West 15.00 acre tract of land described in Volume 4022, Page 1703, both of the Travis County Deed Records, said point having Texas State Plane Surface Grid Central Zone NAD '83 coordinates of: N= 10032510.783; E = 3096613.755, Combined Scale Factor = 0.999965378 (project);

THENCE with the south line of said West tract, also the north line of said City of Austin (COA) tract, S 87°34'56" W 60.00 feet to a 1/2" rebar set at the northwest corner of said COA tract, for the most northerly corner and PLACE OF BEGINNING hereof, from which point a 1/2" rebar found bears N 77°44'36" E 0.13 feet;

THENCE with the west line of said COA 2.450 acre tract of land, also the east line of that certain partition of the Mary Moore Searight Park described in Volume 11532, Page 2222 of the Travis County Real Property Records, the following two calls:

- 1) S 02°29'50" E 128.99 feet to a 1/2" rebar found for an angle point;
- 2) S 08°32'20" E 1014.95 feet to a 3/4" iron pipe found at the southwest corner of said COA 2.450 acre tract of land, on the east line of the Mary Moore Searight Park, as conveyed to the COA by deed recorded in Volume 11427, Page 1721 of the Travis County Real Property Records, for an angle point hereof;

THENCE with the east line of said Mary Moore Searight Park, as conveyed to the COA by deed recorded in Volume 11427, Page 1721 also the west line of that certain 4.527 acre tract of land as conveyed to the COA by deed recorded in Volume 11532, Page 2203 both of the Travis County Real Property Records, N 17°52'41" E 69.72 feet to a 1/2" rebar found at the northwest corner of that certain 2.077 acre tract of land conveyed to the COA for street purposes in Volume 11532, Page 2216, of the Travis County Real Property Records, also the most northerly corner of said COA 4.527 acre tract of land, for an angle point hereof;

THENCE with the west line of said COA 2.077 acre tract of land, also the east line of said COA 4.527 acre tract of land, S 09°17'09" E 1025.94 feet to a 1/2" rebar found at the common southerly corner between said COA 2.077 acre tract of land and said COA 4.527 acre tract of land, on the north line of the Edwin T. Harrell tract of land, as described in Probate Cause No. 31326, and recorded in Volume 538, Page 565 of the Travis County Deed Records, for the southeast corner hereof;

THENCE with the common line between said Harrell tract of land and said COA 4.527 acre tract of land, N 65°11'44" W 48.49 feet to a 1/2" rebar set for the southwest corner hereof;

THENCE crossing through said COA 4.527 acre tract of land, and through said Mary Moore Searight Park tract as conveyed to the COA by deed recorded in Volume 11427, Page 1721 of the Travis County Real Property Records, the following three calls:

- 1) N 09°16'50" W at a distance of 920.23 feet pass a point on the common line between said COA 4.527 acre tract of land and said Mary Moore Searight Park, and continuing with the same course for a total distance of 1645.97 feet to a 1/2" rebar set at a point of curve to the right;
- 2) with said curve to the right, whose central angle is 06°54'13", radius is 2176.36 feet, and whose chord bears N 05°49'44" W 262.07 feet to a 1/2" rebar set at a point of tangency;
- 3) N 02°22'37" W 173.37 feet to the PLACE OF BEGINNING and containing 1.177 acres of land, more or less, or a calculated map area of 51,286 square feet of land.



Notes:

- a) See survey map prepared to accompany this description.
- b) Bearing basis for this survey was determined by G.P.S., holding stations Marbridge and Austin CORS along with r.o.w. monuments found along F.M. 1626.
- c) REFERENCES: TCAD NO.: 0431180122 & 0431180117  
AUSTIN MAP GRID: F-11 & F-12

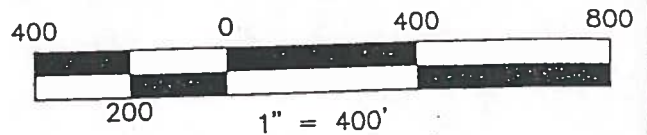
AS SURVEYED BY: RALPH HARRIS SURVEYOR, INC.  
1406 Hether Street, Austin, Texas 78704 (512) 444-1781

*James M. Grant*  
James M. Grant, RPLS 1919  
Jat: C:\Mydocs\SLPARK.M&B

November 19, 1998  
revised; March 23, 1999  
April 10, 1999



# SKETCH TO ACCOMPANY METES AND BOUNDS



LINE TABLE		
TANGENT	BEARING	LENGTH
T1	N87°34'56"W	60.00'
T2	S02°29'50"E	128.99'
T3	S08°32'20"E	1014.95'
T4	N17°52'41"E	69.72'
T5	S09°17'09"E	1025.94'
T6	N65°11'44"W	48.49'
T7	N09°16'50"W	920.23'
T8	N09°16'50"W	725.74'
T9	N02°22'37"W	173.37'

TEXAS STATE PLANE  
SURFACE GRID



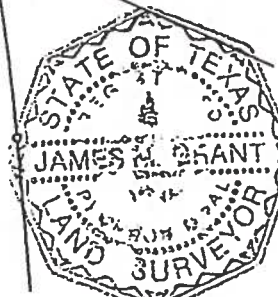
B.F.R. COORDINATES  
TEXAS STATE PLANE GRID  
CENTRAL ZONE NAD83  
N: 10032510.783  
E: 3096613.755  
COMBINED SCALE FACTOR:  
(project)0.999965378

## LEGEND

- 1/2" REBAR FOUND
- 1/2" IRON PIPE FOUND
- 1/2" REBAR SET
- x- WIRE FENCE

AREA OR ROW TAKING

- P.O.B. PLACE OF BEGINNING
- R.O.W. RIGHT-OF-WAY
- P.U.E. PUBLIC UTILITY EASEMENT
- B.L. BUILDING SETBACK LINE
- C.M.A. CALCULATED MAP AREA
- RECORD CALL,
- ( ) V.4022 P.1703 REFERED TO
- V.2689 ,P.410
- < > V.4913 P.538
- << >> V.11532 P.2222
- << >> V.11532 P.2210
- [ ] V.11532 P.2197



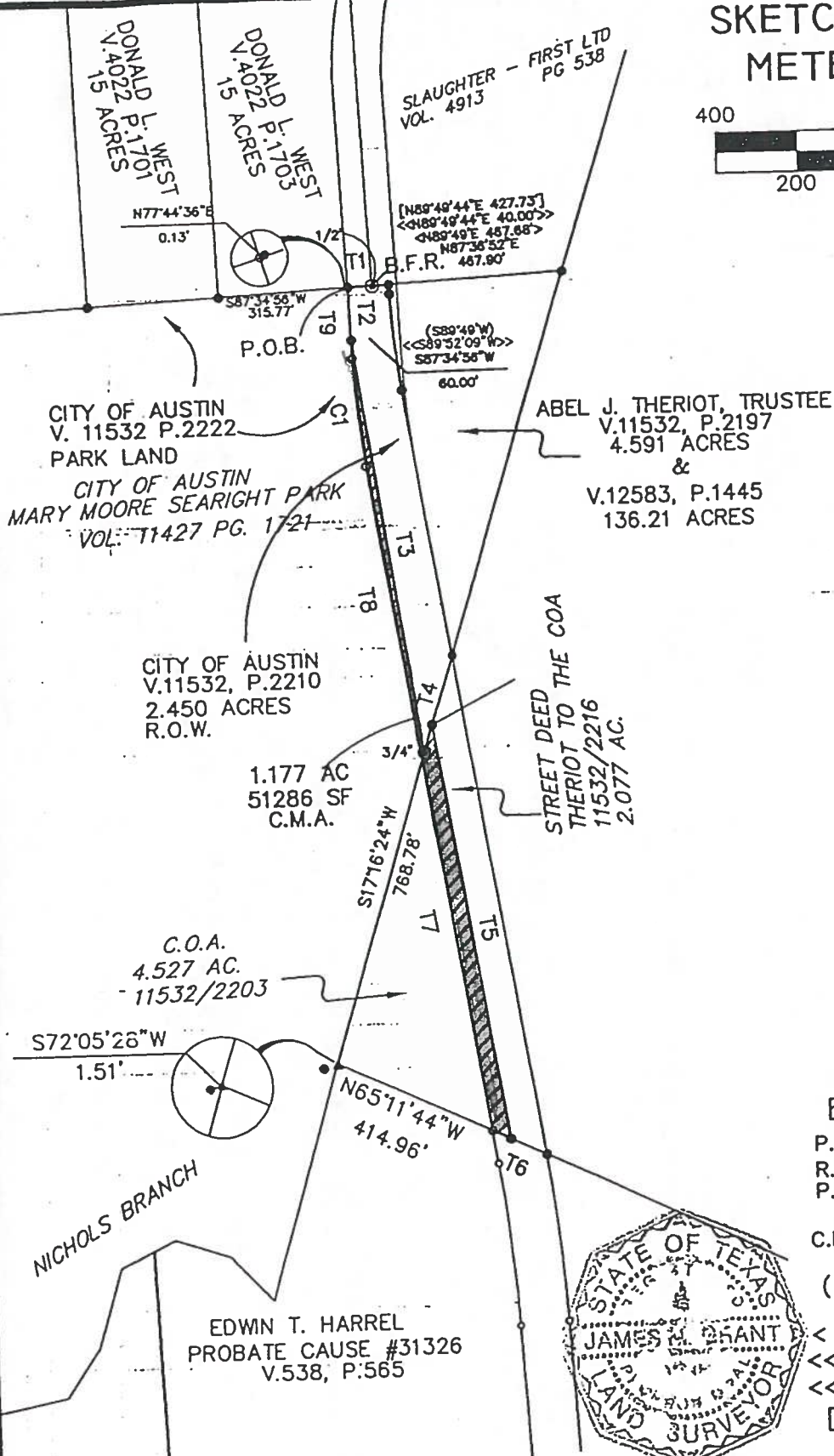
AS SURVEYED BY:  
RALPH HARRIS SURVEYOR INC.  
1406 HETHER  
AUSTIN, TEXAS 78704

*James M. Grant* 4-10-99  
JAMES M. GRANT DATE  
R.P.L.S. No. 1919  
PH: 444-1781, FAX: 444-6123

revision: 03/23/99

CURVE TABLE				
CURVE	RADIUS	DELTA	TANGENT	LENGTH CHORD BEARING
C-1	2176.36'	06°54'13"	131.27'	262.23' 262.07' N05°49'44"W

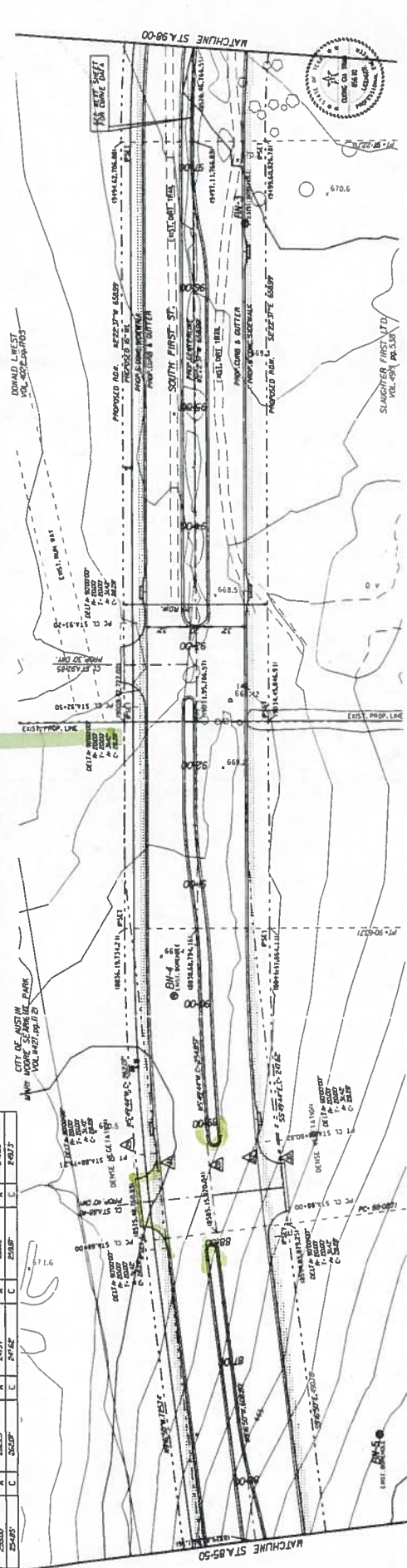
NOTE- BEARING BASIS: GPS SURVEY  
HOLDING MARBRIDGE AND AUSTIN CORRS.  
TCAD# 0431180122 & 0431180117



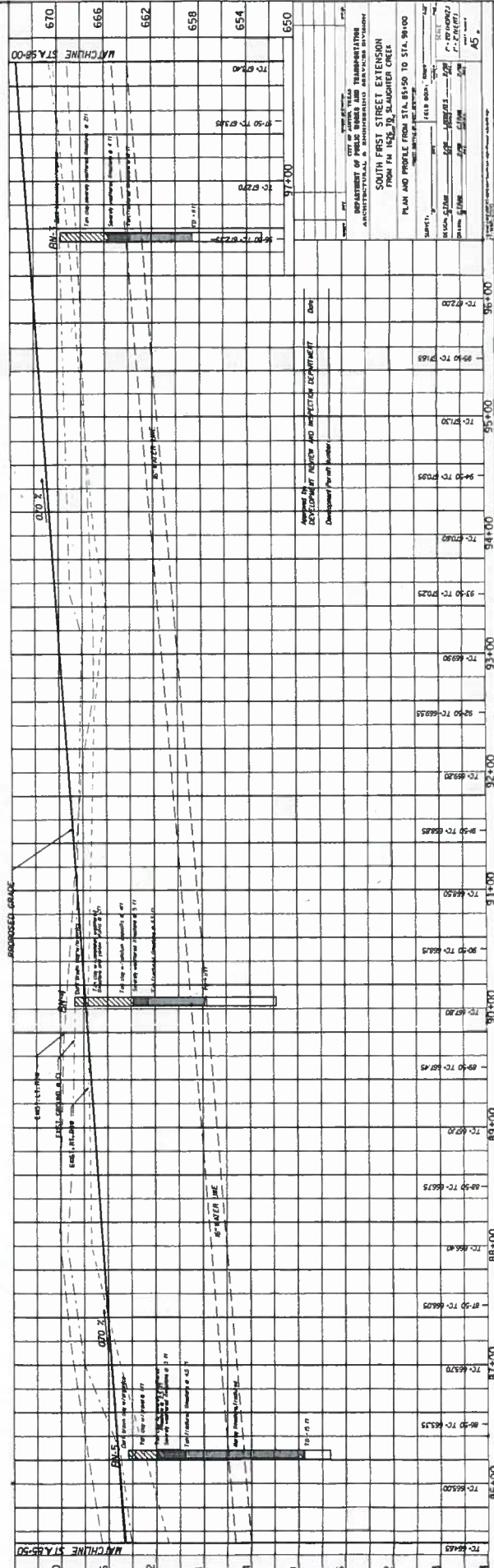


PROPOSED ROAD & BRIDGE - PHASE TWO

VE DATA		CURVE DATA		CURVE DATA		CURVE DATA	
Δ	55413'	Δ	55413'	Δ	55413'	Δ	55413'
284.35'	R	284.35'	R	284.35'	R	284.35'	R
127.65'	T	127.65'	T	127.65'	T	127.65'	T
250.00'	A	250.00'	A	250.00'	A	250.00'	A
55413'	C	55413'	C	55413'	C	55413'	C



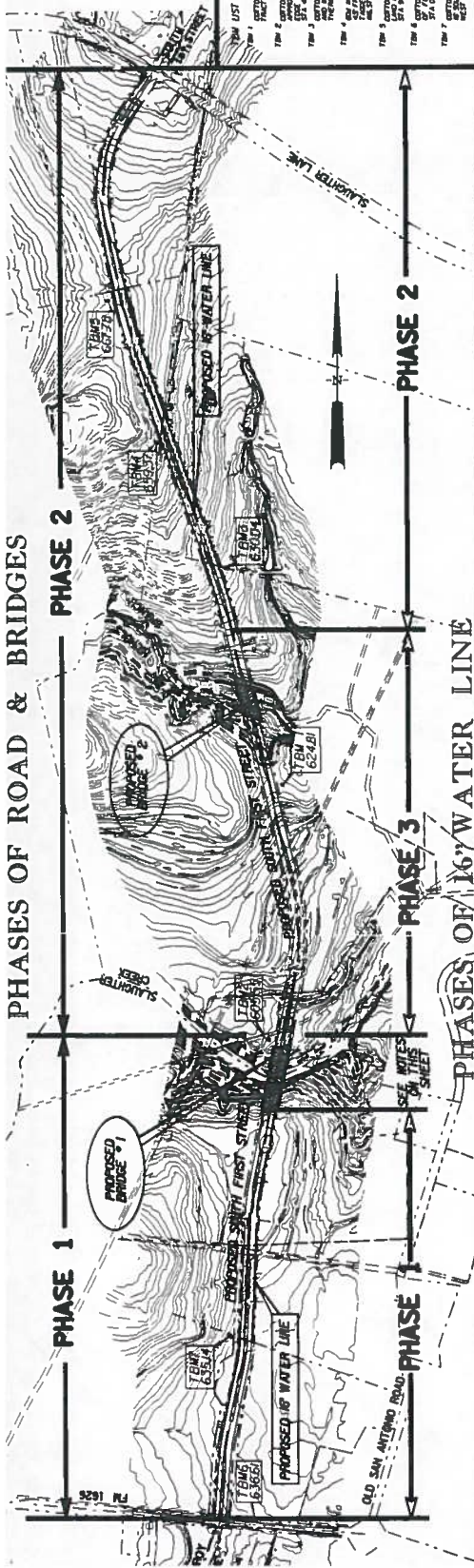
THE SEAL APPEARING ON THIS DRAWING IS THE PROPERTY OF THE ENGINEER AND IS NOT TO BE LOANED, REPRODUCED, COPIED, OR USED FOR ANY OTHER PROJECT WITHOUT THE WRITTEN CONSENT OF THE ENGINEER.



DATE	10/10/2017	BY	W. J. B. / J. B. B.
PROJECT	CITY OF AUSTIN, TEXAS DEPARTMENT OF PUBLIC WORKS ADMINISTRATIVE & ENGINEERING DIVISION		
PROJECT NAME	SOUTH FIRST STREET EXTENSION FROM FM 1425 TO SLAUGHTER CREEK		
PLAN AND PROFILE FROM STA. 81+50 TO STA. 98+00			
SCALE	1" = 40'	VERTICAL	1" = 10'
DESIGNED BY	W. J. B. / J. B. B.		
CHECKED BY	W. J. B. / J. B. B.		
APPROVED BY	W. J. B. / J. B. B.		

# PHASES OF ROAD & BRIDGES

PHASE 1  
PHASE 2  
PHASE 3



- THESE PHASES INDICATE THE SEQUENCE OF CONSTRUCTION OF THE PROJECT.
- PHASE 1: THE EXISTING 16\"/>

GENERAL SECTION	STREET & DRAINAGE	DETAILS	BRIDGES	REVISIONS	APPROVED BY	REVIEWED BY	APPROVED BY	REVIEWED BY	APPROVED BY	REVIEWED BY	APPROVED BY	REVIEWED BY	APPROVED BY	REVIEWED BY	APPROVED BY	REVIEWED BY	APPROVED BY	REVIEWED BY	APPROVED BY	REVIEWED BY	APPROVED BY	REVIEWED BY	APPROVED BY	REVIEWED BY	APPROVED BY	REVIEWED BY	APPROVED BY	REVIEWED BY	APPROVED BY	REVIEWED BY	APPROVED BY	REVIEWED BY	APPROVED BY	REVIEWED BY	APPROVED BY	REVIEWED BY	APPROVED BY	REVIEWED BY	APPROVED BY	REVIEWED BY	APPROVED BY	REVIEWED BY	APPROVED BY	REVIEWED BY	APPROVED BY	REVIEWED BY	APPROVED BY	REVIEWED BY	APPROVED BY	REVIEWED BY	APPROVED BY	REVIEWED BY	APPROVED BY	REVIEWED BY	APPROVED BY	REVIEWED BY	APPROVED BY	REVIEWED BY	APPROVED BY	REVIEWED BY	APPROVED BY	REVIEWED BY	APPROVED BY	REVIEWED BY	APPROVED BY	REVIEWED BY	APPROVED BY	REVIEWED BY	APPROVED BY	REVIEWED BY	APPROVED BY	REVIEWED BY	APPROVED BY	REVIEWED BY	APPROVED BY	REVIEWED BY	APPROVED BY	REVIEWED BY	APPROVED BY	REVIEWED BY	APPROVED BY	REVIEWED BY	APPROVED BY	REVIEWED BY	APPROVED BY	REVIEWED BY	APPROVED BY	REVIEWED BY	APPROVED BY	REVIEWED BY	APPROVED BY	REVIEWED BY	APPROVED BY	REVIEWED BY	APPROVED BY	REVIEWED BY	APPROVED BY	REVIEWED BY	APPROVED BY	REVIEWED BY	APPROVED BY	REVIEWED BY	APPROVED BY	REVIEWED BY	APPROVED BY	REVIEWED BY	APPROVED BY	REVIEWED BY	APPROVED BY	REVIEWED BY	APPROVED BY	REVIEWED BY	APPROVED BY	REVIEWED BY	APPROVED BY	REVIEWED BY	APPROVED BY	REVIEWED BY	APPROVED BY	REVIEWED BY	APPROVED BY	REVIEWED BY	APPROVED BY	REVIEWED BY	APPROVED BY	REVIEWED BY	APPROVED BY	REVIEWED BY	APPROVED BY	REVIEWED BY	APPROVED BY	REVIEWED BY	APPROVED BY	REVIEWED BY	APPROVED BY	REVIEWED BY	APPROVED BY	REVIEWED BY	APPROVED BY	REVIEWED BY	APPROVED BY	REVIEWED BY	APPROVED BY	REVIEWED BY	APPROVED BY	REVIEWED BY	APPROVED BY	REVIEWED BY	APPROVED BY	REVIEWED BY	APPROVED BY	REVIEWED BY	APPROVED BY	REVIEWED BY	APPROVED BY	REVIEWED BY	APPROVED BY	REVIEWED BY	APPROVED BY	REVIEWED BY	APPROVED BY	REVIEWED BY	APPROVED BY	REVIEWED BY	APPROVED BY	REVIEWED BY	APPROVED BY	REVIEWED BY	APPROVED BY	REVIEWED BY	APPROVED BY	REVIEWED BY	APPROVED BY	REVIEWED BY	APPROVED BY	REVIEWED BY	APPROVED BY	REVIEWED BY	APPROVED BY	REVIEWED BY	APPROVED BY	REVIEWED BY	APPROVED BY	REVIEWED BY	APPROVED BY	REVIEWED BY	APPROVED BY	REVIEWED BY	APPROVED BY	REVIEWED BY	APPROVED BY	REVIEWED BY	APPROVED BY	REVIEWED BY	APPROVED BY	REVIEWED BY	APPROVED BY	REVIEWED BY	APPROVED BY	REVIEWED BY	APPROVED BY	REVIEWED BY	APPROVED BY	REVIEWED BY	APPROVED BY	REVIEWED BY	APPROVED BY	REVIEWED BY	APPROVED BY	REVIEWED BY	APPROVED BY	REVIEWED BY	APPROVED BY	REVIEWED BY	APPROVED BY	REVIEWED BY	APPROVED BY	REVIEWED BY	APPROVED BY	REVIEWED BY	APPROVED BY	REVIEWED BY	APPROVED BY	REVIEWED BY	APPROVED BY	REVIEWED BY	APPROVED BY	REVIEWED BY	APPROVED BY	REVIEWED BY	APPROVED BY	REVIEWED BY	APPROVED BY	REVIEWED BY	APPROVED BY	REVIEWED BY	APPROVED BY	REVIEWED BY	APPROVED BY	REVIEWED BY	APPROVED BY	REVIEWED BY	APPROVED BY	REVIEWED BY	APPROVED BY	REVIEWED BY	APPROVED BY	REVIEWED BY	APPROVED BY	REVIEWED BY	APPROVED BY	REVIEWED BY	APPROVED BY	REVIEWED BY	APPROVED BY	REVIEWED BY	APPROVED BY	REVIEWED BY	APPROVED BY	REVIEWED BY	APPROVED BY	REVIEWED BY	APPROVED BY	REVIEWED BY	APPROVED BY	REVIEWED BY	APPROVED BY	REVIEWED BY	APPROVED BY	REVIEWED BY	APPROVED BY	REVIEWED BY	APPROVED BY	REVIEWED BY	APPROVED BY	REVIEWED BY	APPROVED BY	REVIEWED BY	APPROVED BY	REVIEWED BY	APPROVED BY	REVIEWED BY	APPROVED BY	REVIEWED BY	APPROVED BY	REVIEWED BY	APPROVED BY	REVIEWED BY	APPROVED BY	REVIEWED BY	APPROVED BY	REVIEWED BY	APPROVED BY	REVIEWED BY	APPROVED BY	REVIEWED BY	APPROVED BY	REVIEWED BY	APPROVED BY	REVIEWED BY	APPROVED BY	REVIEWED BY	APPROVED BY	REVIEWED BY	APPROVED BY	REVIEWED BY	APPROVED BY	REVIEWED BY	APPROVED BY	REVIEWED BY	APPROVED BY	REVIEWED BY	APPROVED BY	REVIEWED BY	APPROVED BY	REVIEWED BY	APPROVED BY	REVIEWED BY	APPROVED BY	REVIEWED BY	APPROVED BY	REVIEWED BY	APPROVED BY	REVIEWED BY	APPROVED BY	REVIEWED BY	APPROVED BY	REVIEWED BY	APPROVED BY	REVIEWED BY	APPROVED BY	REVIEWED BY	APPROVED BY	REVIEWED BY	APPROVED BY	REVIEWED BY	APPROVED BY	REVIEWED BY	APPROVED BY	REVIEWED BY	APPROVED BY	REVIEWED BY	APPROVED BY	REVIEWED BY	APPROVED BY	REVIEWED BY	APPROVED BY	REVIEWED BY	APPROVED BY	REVIEWED BY	APPROVED BY	REVIEWED BY	APPROVED BY	REVIEWED BY	APPROVED BY	REVIEWED BY	APPROVED BY	REVIEWED BY	APPROVED BY	REVIEWED BY	APPROVED BY	REVIEWED BY	APPROVED BY	REVIEWED BY	APPROVED BY	REVIEWED BY	APPROVED BY	REVIEWED BY	APPROVED BY	REVIEWED BY	APPROVED BY	REVIEWED BY	APPROVED BY	REVIEWED BY	APPROVED BY	REVIEWED BY	APPROVED BY	REVIEWED BY	APPROVED BY	REVIEWED BY	APPROVED BY	REVIEWED BY	APPROVED BY	REVIEWED BY	APPROVED BY	REVIEWED BY	APPROVED BY	REVIEWED BY	APPROVED BY	REVIEWED BY	APPROVED BY	REVIEWED BY	APPROVED BY	REVIEWED BY	APPROVED BY	REVIEWED BY	APPROVED BY	REVIEWED BY	APPROVED BY	REVIEWED BY	APPROVED BY	REVIEWED BY	APPROVED BY	REVIEWED BY	APPROVED BY	REVIEWED BY	APPROVED BY	REVIEWED BY	APPROVED BY	REVIEWED BY	APPROVED BY	REVIEWED BY	APPROVED BY	REVIEWED BY	APPROVED BY	REVIEWED BY	APPROVED BY	REVIEWED BY	APPROVED BY	REVIEWED BY	APPROVED BY	REVIEWED BY	APPROVED BY	REVIEWED BY	APPROVED BY	REVIEWED BY	APPROVED BY	REVIEWED BY	APPROVED BY	REVIEWED BY	APPROVED BY	REVIEWED BY	APPROVED BY	REVIEWED BY	APPROVED BY	REVIEWED BY	APPROVED BY	REVIEWED BY	APPROVED BY	REVIEWED BY	APPROVED BY	REVIEWED BY	APPROVED BY	REVIEWED BY	APPROVED BY	REVIEWED BY	APPROVED BY	REVIEWED BY	APPROVED BY	REVIEWED BY	APPROVED BY	REVIEWED BY	APPROVED BY	REVIEWED BY	APPROVED BY	REVIEWED BY	APPROVED BY	REVIEWED BY	APPROVED BY	REVIEWED BY	APPROVED BY	REVIEWED BY	APPROVED BY	REVIEWED BY	APPROVED BY	REVIEWED BY	APPROVED BY	REVIEWED BY	APPROVED BY	REVIEWED BY	APPROVED BY	REVIEWED BY	APPROVED BY	REVIEWED BY	APPROVED BY	REVIEWED BY	APPROVED BY	REVIEWED BY	APPROVED BY	REVIEWED BY	APPROVED BY	REVIEWED BY	APPROVED BY	REVIEWED BY	APPROVED BY	REVIEWED BY	APPROVED BY	REVIEWED BY	APPROVED BY	REVIEWED BY	APPROVED BY	REVIEWED BY	APPROVED BY	REVIEWED BY	APPROVED BY	REVIEWED BY	APPROVED BY	REVIEWED BY	APPROVED BY	REVIEWED BY	APPROVED BY	REVIEWED BY	APPROVED BY	REVIEWED BY	APPROVED BY	REVIEWED BY	APPROVED BY	REVIEWED BY	APPROVED BY	REVIEWED BY	APPROVED BY	REVIEWED BY	APPROVED BY	REVIEWED BY	APPROVED BY	REVIEWED BY	APPROVED BY	REVIEWED BY	APPROVED BY	REVIEWED BY	APPROVED BY	REVIEWED BY	APPROVED BY	REVIEWED BY	APPROVED BY	REVIEWED BY	APPROVED BY	REVIEWED BY	APPROVED BY	REVIEWED BY	APPROVED BY	REVIEWED BY	APPROVED BY	REVIEWED BY	APPROVED BY	REVIEWED BY	APPROVED BY	REVIEWED BY	APPROVED BY	REVIEWED BY	APPROVED BY	REVIEWED BY	APPROVED BY	REVIEWED BY	APPROVED BY	REVIEWED BY	APPROVED BY	REVIEWED BY	APPROVED BY	REVIEWED BY	APPROVED BY	REVIEWED BY	APPROVED BY	REVIEWED BY	APPROVED BY	REVIEWED BY	APPROVED BY	REVIEWED BY	APPROVED BY	REVIEWED BY	APPROVED BY	REVIEWED BY	APPROVED BY	REVIEWED BY	APPROVED BY	REVIEWED BY	APPROVED BY	REVIEWED BY	APPROVED BY	REVIEWED BY	APPROVED BY	REVIEWED BY	APPROVED BY	REVIEWED BY	APPROVED BY	REVIEWED BY	APPROVED BY	REVIEWED BY	APPROVED BY	REVIEWED BY	APPROVED BY	REVIEWED BY	APPROVED BY	REVIEWED BY	APPROVED BY	REVIEWED BY	APPROVED BY	REVIEWED BY	APPROVED BY	REVIEWED BY	APPROVED BY	REVIEWED BY	APPROVED BY	REVIEWED BY	APPROVED BY	REVIEWED BY	APPROVED BY	REVIEWED BY	APPROVED BY	REVIEWED BY	APPROVED BY	REVIEWED BY	APPROVED BY	REVIEWED BY	APPROVED BY	REVIEWED BY	APPROVED BY	REVIEWED BY	APPROVED BY	REVIEWED BY	APPROVED BY	REVIEWED BY	APPROVED BY	REVIEWED BY	APPROVED BY	REVIEWED BY	APPROVED BY	REVIEWED BY	APPROVED BY	REVIEWED BY	APPROVED BY	REVIEWED BY	APPROVED BY	REVIEWED BY	APPROVED BY	REVIEWED BY	APPROVED BY	REVIEWED BY	APPROVED BY	REVIEWED BY	APPROVED BY	REVIEWED BY	APPROVED BY	REVIEWED BY	APPROVED BY	REVIEWED BY	APPROVED BY	REVIEWED BY	APPROVED BY	REVIEWED BY	APPROVED BY	REVIEWED BY	APPROVED BY	REVIEWED BY	APPROVED BY	REVIEWED BY
-----------------	-------------------	---------	---------	-----------	-------------	-------------	-------------	-------------	-------------	-------------	-------------	-------------	-------------	-------------	-------------	-------------	-------------	-------------	-------------	-------------	-------------	-------------	-------------	-------------	-------------	-------------	-------------	-------------	-------------	-------------	-------------	-------------	-------------	-------------	-------------	-------------	-------------	-------------	-------------	-------------	-------------	-------------	-------------	-------------	-------------	-------------	-------------	-------------	-------------	-------------	-------------	-------------	-------------	-------------	-------------	-------------	-------------	-------------	-------------	-------------	-------------	-------------	-------------	-------------	-------------	-------------	-------------	-------------	-------------	-------------	-------------	-------------	-------------	-------------	-------------	-------------	-------------	-------------	-------------	-------------	-------------	-------------	-------------	-------------	-------------	-------------	-------------	-------------	-------------	-------------	-------------	-------------	-------------	-------------	-------------	-------------	-------------	-------------	-------------	-------------	-------------	-------------	-------------	-------------	-------------	-------------	-------------	-------------	-------------	-------------	-------------	-------------	-------------	-------------	-------------	-------------	-------------	-------------	-------------	-------------	-------------	-------------	-------------	-------------	-------------	-------------	-------------	-------------	-------------	-------------	-------------	-------------	-------------	-------------	-------------	-------------	-------------	-------------	-------------	-------------	-------------	-------------	-------------	-------------	-------------	-------------	-------------	-------------	-------------	-------------	-------------	-------------	-------------	-------------	-------------	-------------	-------------	-------------	-------------	-------------	-------------	-------------	-------------	-------------	-------------	-------------	-------------	-------------	-------------	-------------	-------------	-------------	-------------	-------------	-------------	-------------	-------------	-------------	-------------	-------------	-------------	-------------	-------------	-------------	-------------	-------------	-------------	-------------	-------------	-------------	-------------	-------------	-------------	-------------	-------------	-------------	-------------	-------------	-------------	-------------	-------------	-------------	-------------	-------------	-------------	-------------	-------------	-------------	-------------	-------------	-------------	-------------	-------------	-------------	-------------	-------------	-------------	-------------	-------------	-------------	-------------	-------------	-------------	-------------	-------------	-------------	-------------	-------------	-------------	-------------	-------------	-------------	-------------	-------------	-------------	-------------	-------------	-------------	-------------	-------------	-------------	-------------	-------------	-------------	-------------	-------------	-------------	-------------	-------------	-------------	-------------	-------------	-------------	-------------	-------------	-------------	-------------	-------------	-------------	-------------	-------------	-------------	-------------	-------------	-------------	-------------	-------------	-------------	-------------	-------------	-------------	-------------	-------------	-------------	-------------	-------------	-------------	-------------	-------------	-------------	-------------	-------------	-------------	-------------	-------------	-------------	-------------	-------------	-------------	-------------	-------------	-------------	-------------	-------------	-------------	-------------	-------------	-------------	-------------	-------------	-------------	-------------	-------------	-------------	-------------	-------------	-------------	-------------	-------------	-------------	-------------	-------------	-------------	-------------	-------------	-------------	-------------	-------------	-------------	-------------	-------------	-------------	-------------	-------------	-------------	-------------	-------------	-------------	-------------	-------------	-------------	-------------	-------------	-------------	-------------	-------------	-------------	-------------	-------------	-------------	-------------	-------------	-------------	-------------	-------------	-------------	-------------	-------------	-------------	-------------	-------------	-------------	-------------	-------------	-------------	-------------	-------------	-------------	-------------	-------------	-------------	-------------	-------------	-------------	-------------	-------------	-------------	-------------	-------------	-------------	-------------	-------------	-------------	-------------	-------------	-------------	-------------	-------------	-------------	-------------	-------------	-------------	-------------	-------------	-------------	-------------	-------------	-------------	-------------	-------------	-------------	-------------	-------------	-------------	-------------	-------------	-------------	-------------	-------------	-------------	-------------	-------------	-------------	-------------	-------------	-------------	-------------	-------------	-------------	-------------	-------------	-------------	-------------	-------------	-------------	-------------	-------------	-------------	-------------	-------------	-------------	-------------	-------------	-------------	-------------	-------------	-------------	-------------	-------------	-------------	-------------	-------------	-------------	-------------	-------------	-------------	-------------	-------------	-------------	-------------	-------------	-------------	-------------	-------------	-------------	-------------	-------------	-------------	-------------	-------------	-------------	-------------	-------------	-------------	-------------	-------------	-------------	-------------	-------------	-------------	-------------	-------------	-------------	-------------	-------------	-------------	-------------	-------------	-------------	-------------	-------------	-------------	-------------	-------------	-------------	-------------	-------------	-------------	-------------	-------------	-------------	-------------	-------------	-------------	-------------	-------------	-------------	-------------	-------------	-------------	-------------	-------------	-------------	-------------	-------------	-------------	-------------	-------------	-------------	-------------	-------------	-------------	-------------	-------------	-------------	-------------	-------------	-------------	-------------	-------------	-------------	-------------	-------------	-------------	-------------	-------------	-------------	-------------	-------------	-------------	-------------	-------------	-------------	-------------	-------------	-------------	-------------	-------------	-------------	-------------	-------------	-------------	-------------	-------------	-------------	-------------	-------------	-------------	-------------	-------------	-------------	-------------	-------------	-------------	-------------	-------------	-------------	-------------	-------------	-------------	-------------	-------------	-------------	-------------	-------------	-------------	-------------	-------------	-------------	-------------	-------------	-------------	-------------	-------------	-------------	-------------	-------------	-------------	-------------	-------------	-------------	-------------	-------------	-------------	-------------	-------------	-------------	-------------	-------------	-------------	-------------	-------------	-------------	-------------	-------------	-------------	-------------	-------------	-------------	-------------	-------------	-------------	-------------	-------------	-------------	-------------	-------------	-------------	-------------	-------------	-------------	-------------	-------------	-------------	-------------	-------------	-------------	-------------	-------------	-------------	-------------	-------------	-------------	-------------	-------------	-------------	-------------	-------------	-------------	-------------	-------------	-------------	-------------	-------------	-------------	-------------	-------------	-------------	-------------	-------------	-------------	-------------	-------------	-------------	-------------	-------------	-------------	-------------	-------------	-------------	-------------	-------------	-------------	-------------	-------------	-------------



THE SEAL APPEARING ON THIS DOCUMENT WAS AUTHORIZED BY THE BOARD OF ENGINEERS, ARCHITECTS AND LAND SURVEYORS OF THE STATE OF TEXAS.

Approved by: \_\_\_\_\_  
Development Permit Number: \_\_\_\_\_  
Date: \_\_\_\_\_

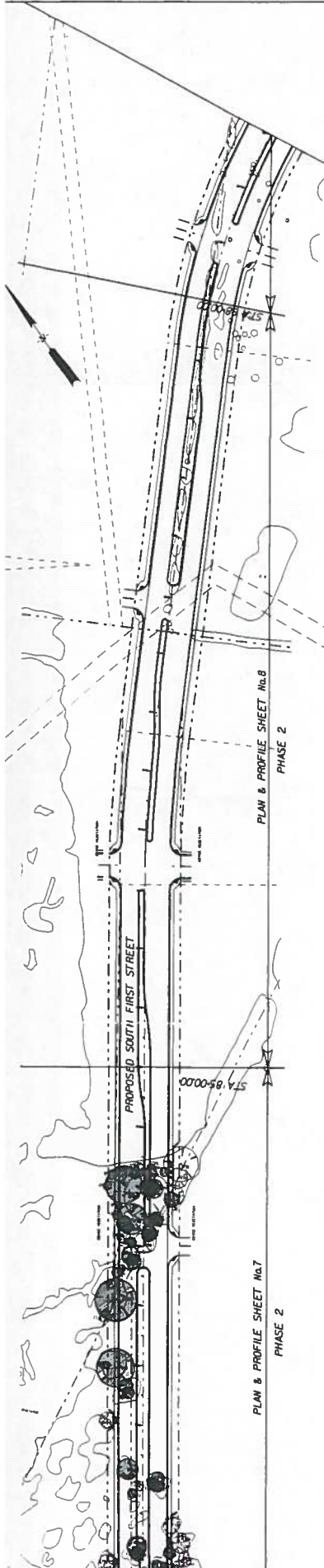
REVISIONS

NO.	DATE	DESCRIPTION
1	08/01/2018	ISSUED FOR PERMIT

SHEET INDEX & BENCH MARKS

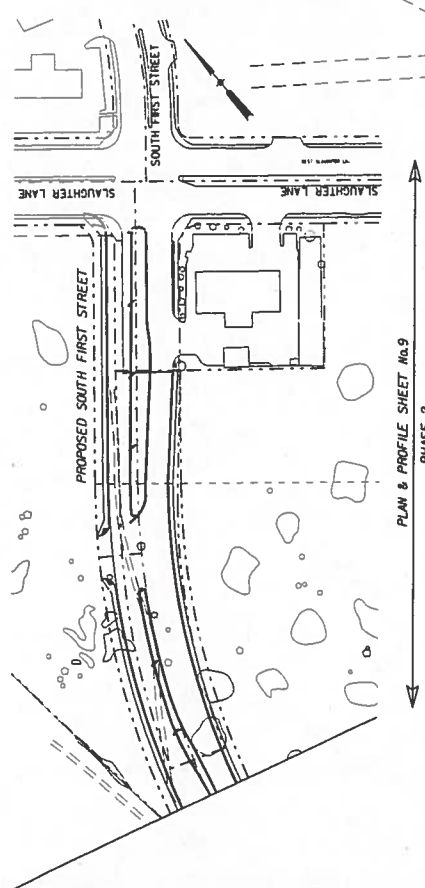
DATE	BY	DESCRIPTION
08/01/2018	J. D. SMITH	ISSUED FOR PERMIT





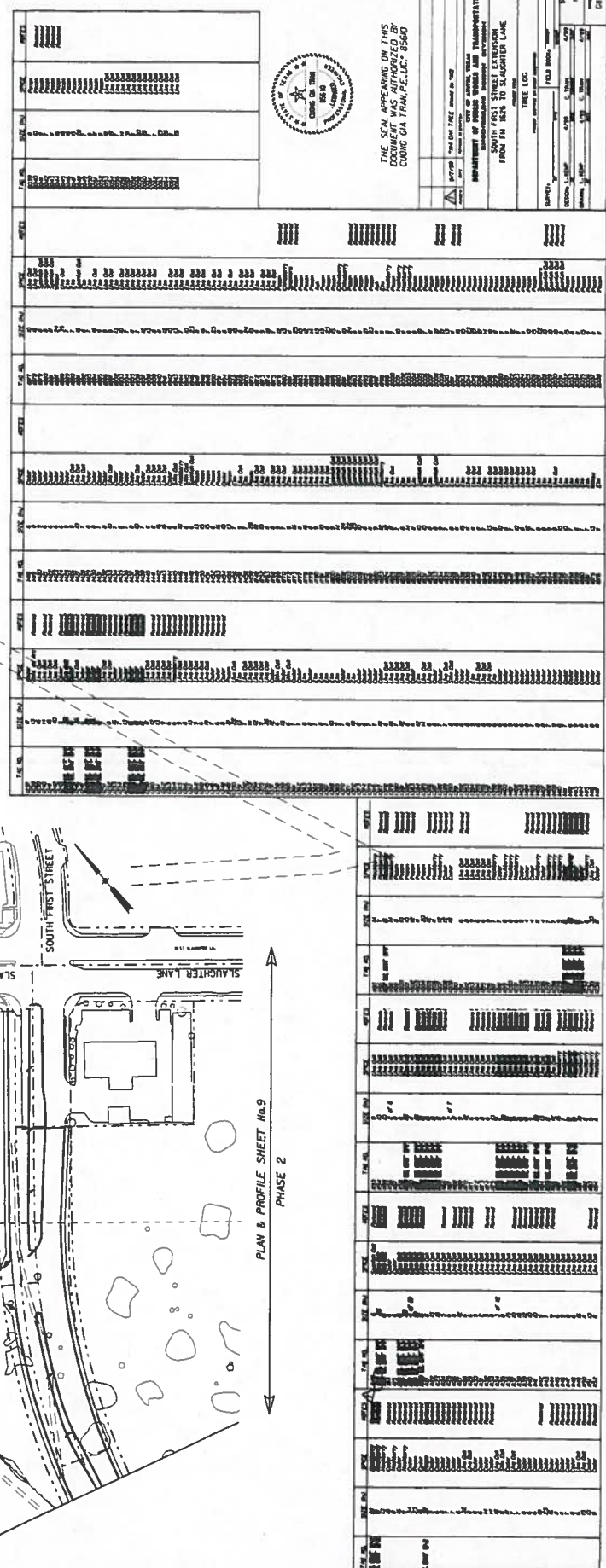
PLAN & PROFILE SHEET No.8  
PHASE 2

PLAN & PROFILE SHEET No.7  
PHASE 2



PLAN & PROFILE SHEET No.9  
PHASE 2

Approved By: \_\_\_\_\_ Date: \_\_\_\_\_  
Development Permit Number: \_\_\_\_\_



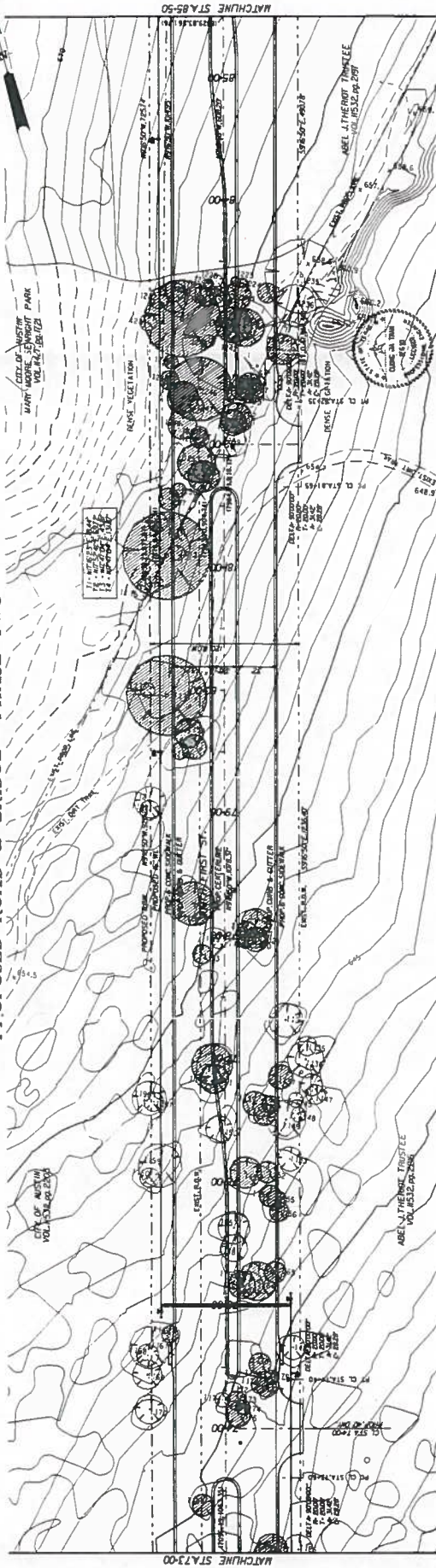
THE SEAL APPEARING ON THIS DOCUMENT WAS AUTHORIZED BY COOKING GA THAM P.E. NO. 8560

PROJECT NO.	DATE	BY	CHECKED BY
PROJECT NAME	PROJECT LOCATION	PROJECT DESCRIPTION	PROJECT STATUS
DEPARTMENT OF PUBLIC WORKS AND TRANSPORTATION SOUTH FIRST STREET EXTENSION FROM FM 1825 TO SLAUGHTER LANE PHASE 2			
DESIGNED BY	FIELD ENGINEER	DATE	BY
CHECKED BY	DATE	BY	DATE
APPROVED BY	DATE	BY	DATE

24-000-2000



# PROPOSED ROAD & BRIDGE - PHASE TWO



THE SEAL APPEARING ON THIS DOCUMENT WAS AUTHORIZED BY CHONG GIA THIN P.E. - 8560

Approved By: \_\_\_\_\_ Date: \_\_\_\_\_  
 DEVELOPER REVIEW AND INSPECTION DEPARTMENT  
 Development Permit Number: \_\_\_\_\_

