



1

MEMORANDUM

To: Parks and Recreation Board

From: Jesus M. Olivares, Director
Parks and Recreation Department

Date: October 22, 2002

Subject: Construction of Hughes Bulkheading at 2609 Westlake Drive
File No. SP-02-0162D.

A request has been received from Aupperle Company on behalf of Lance Hughes to install bulkheading at 2609 Westlake Drive on Lake Austin. The bulkheading consist of Granite blocks and was installed in January – Febuary of 2001.

The Parks and Recreation Department (PARD) staff has reviewed plans for the installed project and finds they do not meet the requirements of Article 13, Section 25-2-1174(C), (Structural Requirements) of the Land Development Code. Bulkheading on the main body of the lake must be designed to minimize wave return. Minimize meaning to reduce to the smallest possible size. A verticle surface doesn't minimize wave return. The applicant was given these comments and the site plan has not been changed.

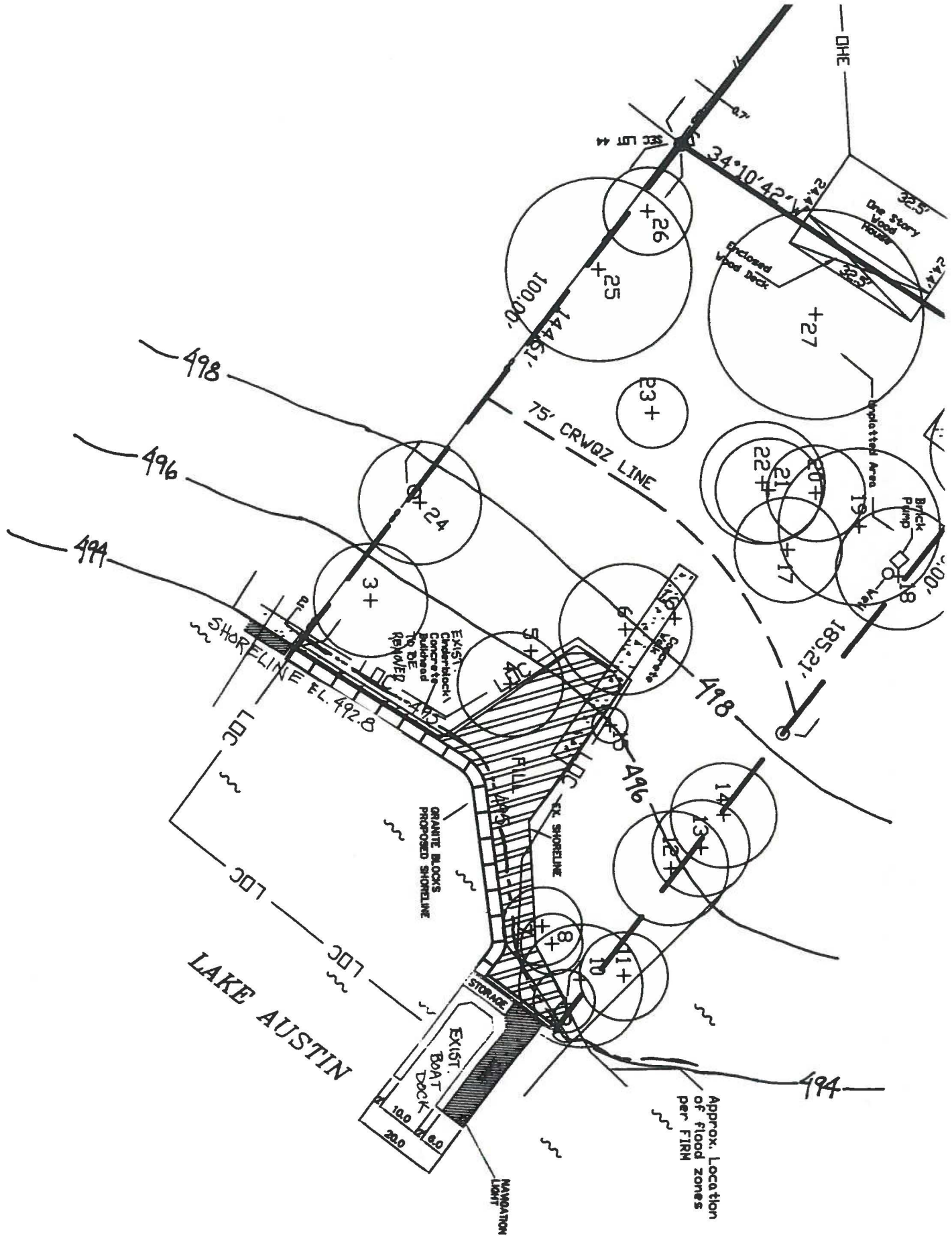
RECOMMENDATION:

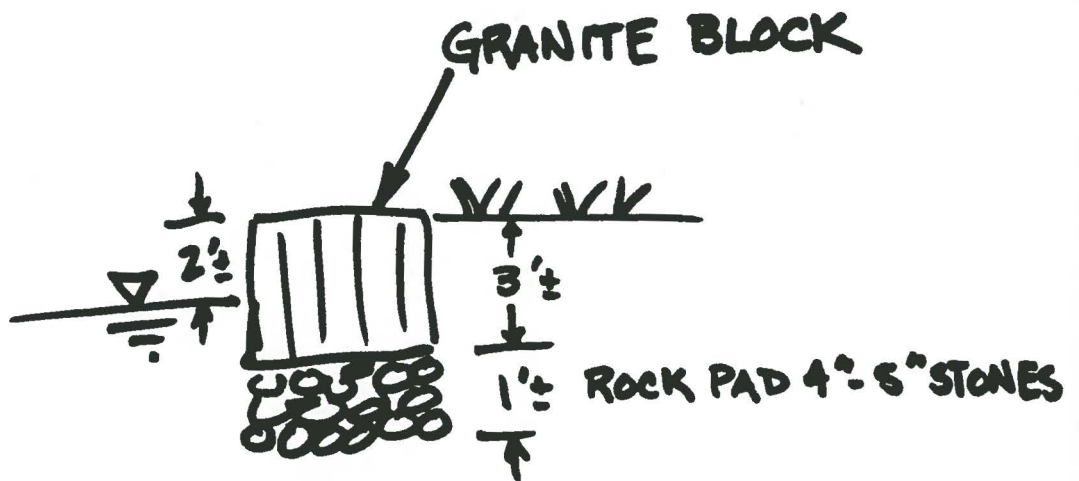
I do not recommend approval of the above request as detailed in the attached site plan.


Jesus M. Olivares, Director
Parks and Recreation Department

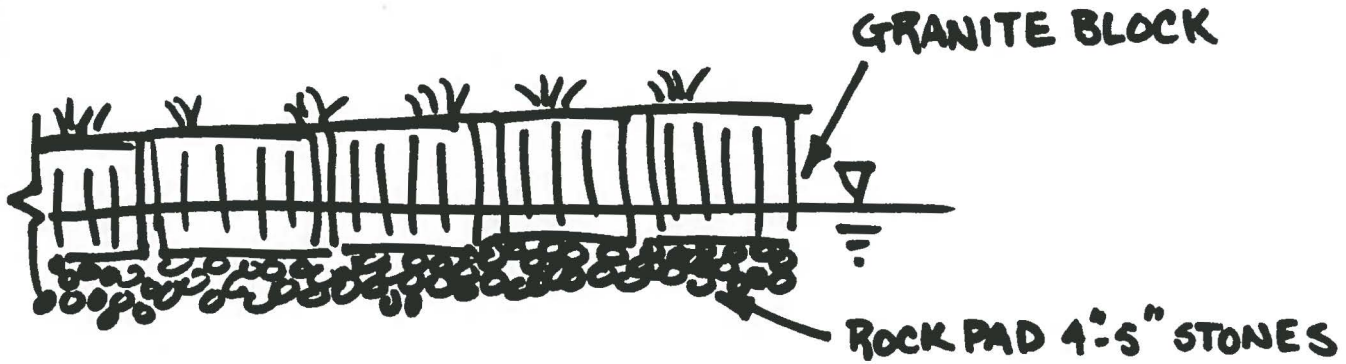
Lance Hughes Chronology

June 23, 1999	A site plan application was submitted for construction of a boat dock at 2609 Westlake Drive, Austin, Texas.
October 13, 1999	Site plan SP-99-0233DS released
January 28, 2000	Inspections by the Environmental Inspectors began.
February 6, 2001	Inspection found that additional development had occurred on the site that was not shown on the approved site plan, namely large granite blocks had been placed along the shoreline and fill material had been deposited behind the blocks. This development activity had extended the shoreline beyond the existing shoreline and out into the lake. No erosion and sedimentation controls had been installed. Site was issued a red tag. Red tag notice mailed to the property owner, Lance Hughes
April 27, 2001	Property owner, Lance Hughes, asked to contact the City to discuss the unpermitted development.
May 16, 2001	Additional inspection showed no change on the site.
June 6, 2001	Additional inspection showed no change on the site.
July 10, 2001	Sodding of the unpermitted material deposited behind the granite blocks was commencing.
August 16, 2001	Material deposited behind the granite blocks had been revegetated.
August 23, 2001	Material deposited behind the granite blocks had been revegetated.
September 20, 2001	Material deposited behind the granite blocks had been revegetated.
October 17, 2001	Criminal complaints filed in Municipal Court for development not in accordance with the approved site plan.
December 5, 2001	Lance Hughes entered into a deferral to bring the site into compliance.
April 26, 2002	Site plan, SP-02-0162D filed for the placement of the granite boulders in the lake, and modification of the shoreline.
June 5, 2002	Deferral ends.
September 11, 2001	Revocation hearing set. Reset until 11/6/02.





TYP. CROSS SECTION (NTS)



TYP. PROFILE (NTS)

2

TO: PARKS AND RECREATION BOARD MEMBERS

FROM: JESUS M. OLIVARES, DIRECTOR
PARKS AND RECREATION DEPARTMENT

SUBJECT: SURVEY OF PARD ISSUES/NEEDS NEXT 5 YEARS


DATE: OCTOBER 11, 2002

It's time to update the Parks and Recreation Department's **Recovery Action Program** or **RAP**, a component of our Master Plan, in order for the City to remain eligible to apply for grants from the National Park Service's Urban Park and Recreation Recovery Program (UPARR). We most recently received a \$500,000 UPARR grant in 2001 to expand and refurbish Lott Park in East Austin. Our eligibility, however, expires December 31st of this year.

The **RAP** is a "state of the Department" report with a 5-year horizon, and its development depends largely on internal and external input. We have developed two surveys to obtain the needed input, one to be filled out by Division level staff and the other to be completed by all of PARD's boards and commissions. A copy is included for your review, and also a list of all our boards and commissions that will complete the survey.

The survey is to be completed by the Board as a whole, not individual members. Your most critical input will be that not covered by the other boards and commissions.

Thank you for your assistance with this important task.


Jesus M. Olivares, Director
Parks and Recreation Department

**SURVEY of PARD NEEDS and ISSUES
OVER the NEXT 5 YEARS
2003-2008
FROM the ADVISORY BOARD and COMMISSION
PERSPECTIVE
(Fall 2002)**

ADVISORY BOARD OR COMMISSION _____

PHYSICAL & REHABILITATION NEEDS/ISSUES

List in priority order the most important physical and rehabilitation needs/issues your facility(ies) will face in the next 5 years. These will generally be items for the Capital Improvements Program. If your duties do not relate to a specific facility(ies), please write "NA."

[Examples might include build new pool, recreation center, or senior center to serve community in northwest, east, south, far north part of City; replace gym floors, roof, heating and cooling system; retrofit for ADA accessibility; renovate pool house; renovate playscape; add new crafts room, etc.]

List other providers' facilities (i.e. schools, transport, housing, health clinics, etc.) that assist you in making available your facility(ies) and services.

[An example might be that PARD brings recreation center activities to children in schools after school hours.]

List other providers' facilities you would like to use in order to extend your facility(ies) and services.

[An example might be the use of a church gymnasium for PARD-sponsored basketball or volleyball play.]

What physical changes do you want or need to make in order to attract special population users and to mainstream existing special population users?

SERVICE NEEDS/ISSUES

What are your target populations, and are your services reaching them?

➤ What actions are needed to improve the reach of your services over the next 5 years?

What are you doing to provide your services to special populations?

➤ What actions are needed to reach more special population users over the next 5 years?

List other service providers and/or jurisdictions with which you cooperate to provide your services.

➤ What actions are needed to improve or expand cooperation with other providers, and who are they?

MANAGEMENT NEEDS/ISSUES

From your collective perspective, what management needs/issues need to be addressed in the next 5 years?

[Issues covered here may include staffing levels, budget, contractual services, etc.]

At your advisory board/commission level

At the local staff level

At the PARD headquarters or administrative staff level

At the City Management/City Council level

OTHER COMMENTS

Thank you very much for your time and thoughtful contributions

**ADVISORY BOARD and COMMISSION
& STAFF* ASSIGNED for SURVEY
(Fall 2002)**

Sarah Campbell
Maria Ciccicarelli

Jay Culver
Farhad Madani
Gene Faulk
Mel Hinson

Gina Saenz

Mini Freeman

Jorge Zapata

Reuben Olivo

Mark Lord
Joanna Mesecke
Frank Contreras

Parks and Recreation Board
Arts Commission
Renaissance Market Commission
Urban Forestry Board
Aquatic Advisory Board
Golf Advisory Board
Austin Area Garden Council

Alamo Rec Ctr Advisory Board
Austin Rec Ctr Advisory Board
Dottie Jordan Rec Ctr Advisory Board
Hancock Rec Ctr Advisory Board
Northwest Rec Ctr Advisory Board
St. Johns Rec Ctr Advisory Board

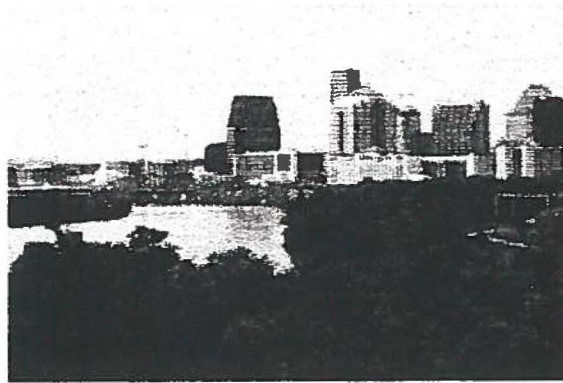
Camacho Activity Ctr Advisory Board
Cantu/Pan Am Rec Ctr Advisory Board
Givens Rec Ctr Advisory Board
Metz Rec Ctr Advisory Board
Parque Zaragoza Rec Ctr Advisory Board
Rosewood Rec Ctr Advisory Board

Conley-Guerrero Senior Ctr Advisory Board
Old Bakery and Emporium Advisory Board
Senior Activity Ctr (Lamar) Advisory Board
South Austin Senior Activity Ctr Advisory Board

Dittmar Rec Ctr Advisory Board
Dove Springs Rec Ctr Advisory Board
McBeth Rec Ctr Advisory Board
Montopolis Rec Ctr Advisory Board
South Austin Rec Ctr Advisory Board

Metro Austin Softball Association
Colony Park/Lakeside Neighborhood Ass'n
Youth Athletic Council

* *Assigned staff will receive surveys directly.*



Austin Parks and Recreation Department Calendar of Events

NOVEMBER 2002

Nov. 1	Time Warner's "A Night at the Movies"	974-6700	Republic Square
Nov. 1-Dec.31	Boy's & Girl's 1-5 Grade Basketball League	974-7865	St. John's Rec. Center
Nov. 8	A.B. Cantu Pan Am Golf Tournament 5-8pm	445-6003	Jimmy Clay Golf Course
Nov. 13	Thanksgiving Workshop 3:30-5pm	472-7142	Parque Zaragosa
Nov. 15	Tree Lighting Coloring Contest Deadline	974-6700	Zilker Park
Nov. 19	Community Thanksgiving Dinner 6pm	472-6838	Rosewood Rec. Center
Nov. 19	Community Thanksgiving Dinner 6pm	478-8716	Metz Rec. Center
Nov. 19	Judging of Tree Lighting	974-6700	Zilker Park
Nov. 21	Community Thanksgiving Dinner 6:30pm	928-1982	Givens Rec. Center
Nov. 21	Turkey Bingo 3-4pm	476-9193	A.B. Cantu Pan Am Center
Nov. 21	Thanksgiving Dinner 6pm	472-7142	Parque Zaragosa
Nov. 23	Community Thanksgiving Luncheon 11am-2pm	476-9193	A.B. Cantu Pan Am Center
Nov. 25	Community Thanksgiving Dinner 6pm	444-6601	South Austin Rec. Center

Nov. 26	Press Conference @10am	397-1463	Zilker Hillside Theater
Nov. 27	C-Day Camps 7:30am-6:00pm	974-6700	All Rec. Centers

2002 YEAR PLANNER

FIRST QUARTER

JANUARY						
SUN	MON	TUE	WED	THU	FRI	SAT
		1 USA CAN	2	3	4	5
6	7	8	9	10	11	12
13	14	15	16	17	18	19
20	21 USA	22	23	24	25	26
27	28	29	30	31		

FEBRUARY						
SUN	MON	TUE	WED	THU	FRI	SAT
					1	2
3	4	5	6	7	8	9
10	11	12	13	14	15	16
17	18 USA	19	20	21	22	23
24	25	26	27	28		

MARCH						
SUN	MON	TUE	WED	THU	FRI	SAT
					1	2
3	4	5	6	7	8	9
10	11	12	13	14	15	16
17	18	19	20	21	22	23
24 31	25	26	27	28 ★	29 USA CAN	30

SECOND QUARTER

APRIL						
SUN	MON	TUE	WED	THU	FRI	SAT
	1	2	3	4	5	6
7	8	9	10	11	12	13
14	15	16	17	18	19	20
21	22	23	24	25	26	27
28	29	30				

MAY						
SUN	MON	TUE	WED	THU	FRI	SAT
			1	2	3	4
5	6	7	8	9	10	11
12	13	14	15	16	17	18
19	20 CAN	21	22	23	24	25
26	27 USA	28	29	30	31	

JUNE						
SUN	MON	TUE	WED	THU	FRI	SAT
						1
2	3	4	5	6	7	8
9	10	11	12	13	14	15
16	17	18	19	20	21	22
23 30	24 CAN	25	26	27	28	29

THIRD QUARTER

JULY						
SUN	MON	TUE	WED	THU	FRI	SAT
	1 CAN	2	3	4 USA	5	6
7	8	9	10	11	12	13
14	15	16	17	18	19	20
21	22	23	24	25	26	27
28	29	30	31			

AUGUST						
SUN	MON	TUE	WED	THU	FRI	SAT
				1	2	3
4	5 CAN	6	7	8	9	10
11	12	13	14	15	16	17
18	19	20	21	22	23	24
25	26	27	28	29	30	31

SEPTEMBER						
SUN	MON	TUE	WED	THU	FRI	SAT
1	2 USA CAN	3	4	5	6	7 ★
8	9	10	11	12	13	14
15	16 ★	17	18	19	20	21
22	23	24	25	26	27	28
29	30					

FOURTH QUARTER

OCTOBER						
SUN	MON	TUE	WED	THU	FRI	SAT
		1	2	3	4	5
6	7	8	9	10	11	12
13	14 USA CAN	15	16	17	18	19
20	21	22	23	24	25	26
27	28	29	30	31		

NOVEMBER						
SUN	MON	TUE	WED	THU	FRI	SAT
					1	2
3	4	5	6	7	8	9
10	11 USA CAN	12	13	14	15	16
17	18	19	20	21	22	23
24	25	26	27	28 USA	29	30 ★

DECEMBER						
SUN	MON	TUE	WED	THU	FRI	SAT
1	2	3	4	5	6	7
8	9	10	11	12	13	14
15	16	17	18	19	20	21
22	23	24	25 USA CAN	26 CAN	27	28
29	30	31				

USA UNITED STATES NATIONAL/STATE HOLIDAYS

CAN CANADIAN NATIONAL/PROVINCIAL HOLIDAYS

★ JEWISH HOLIDAYS

The Jewish day begins and ends at sundown; thus, all holidays begin at sundown of the day preceding the date shown.