



THE GROVE

Bicycle Advisory Council
07.19.2016



5 Key Points

1. A vibrant and viable mixed-use plan
2. A diverse community of housing
3. Connectivity, to and through
4. Green spaces, big and small
5. Innovative environmental measures



5 Key Points

1. **A vibrant and viable mixed-use plan**
2. A diverse community of housing
3. Connectivity, to and through
4. Green spaces, big and small
5. Innovative environmental measures







5 Key Points

1. A vibrant and viable mixed-use plan
2. **A diverse community of housing**
3. Connectivity, to and through
4. Green spaces, big and small
5. Innovative environmental measures







The Grove – Affordable Housing Plan

Total Units = 1354*

*Assumes 1250 non-affordable units based on staff reductions

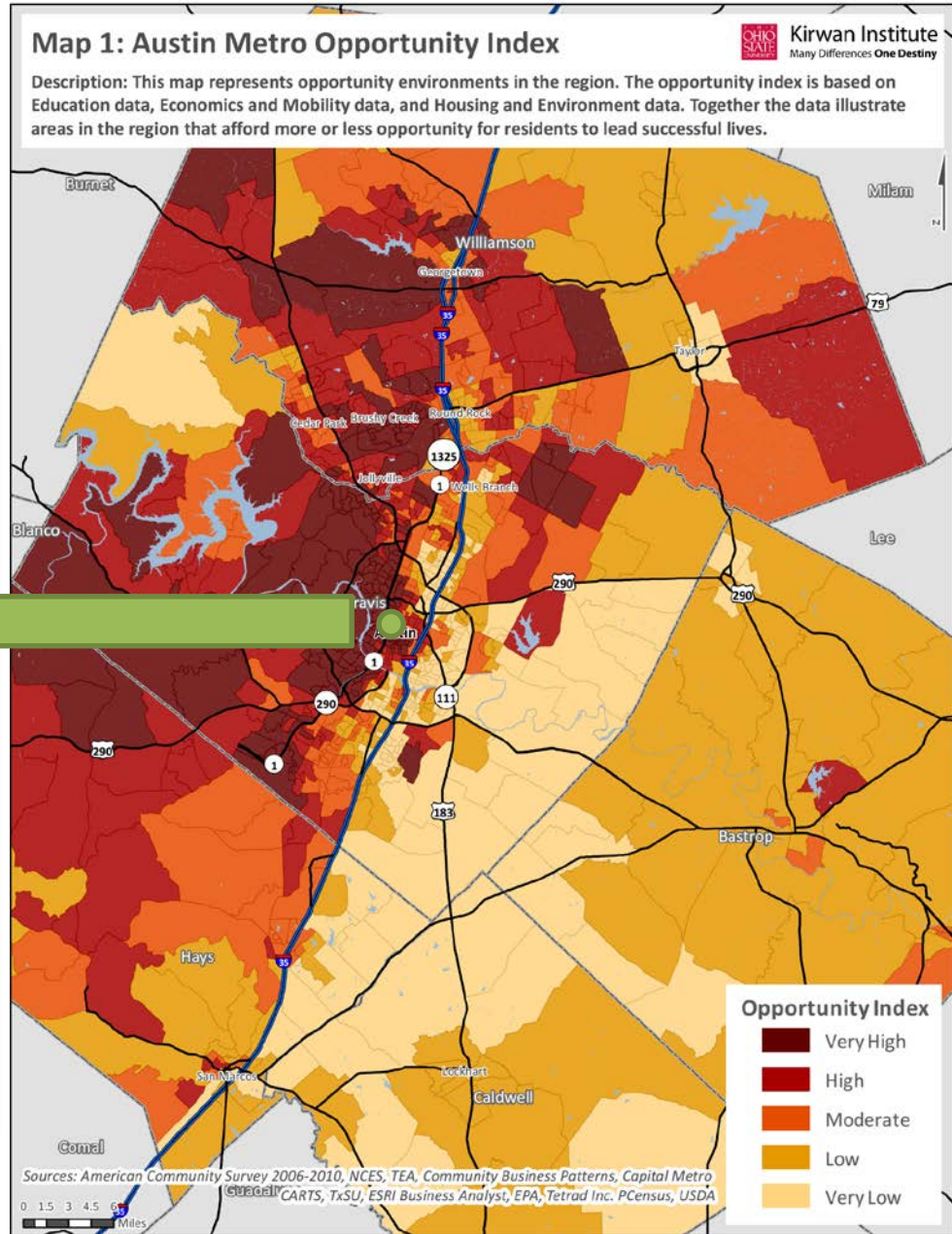
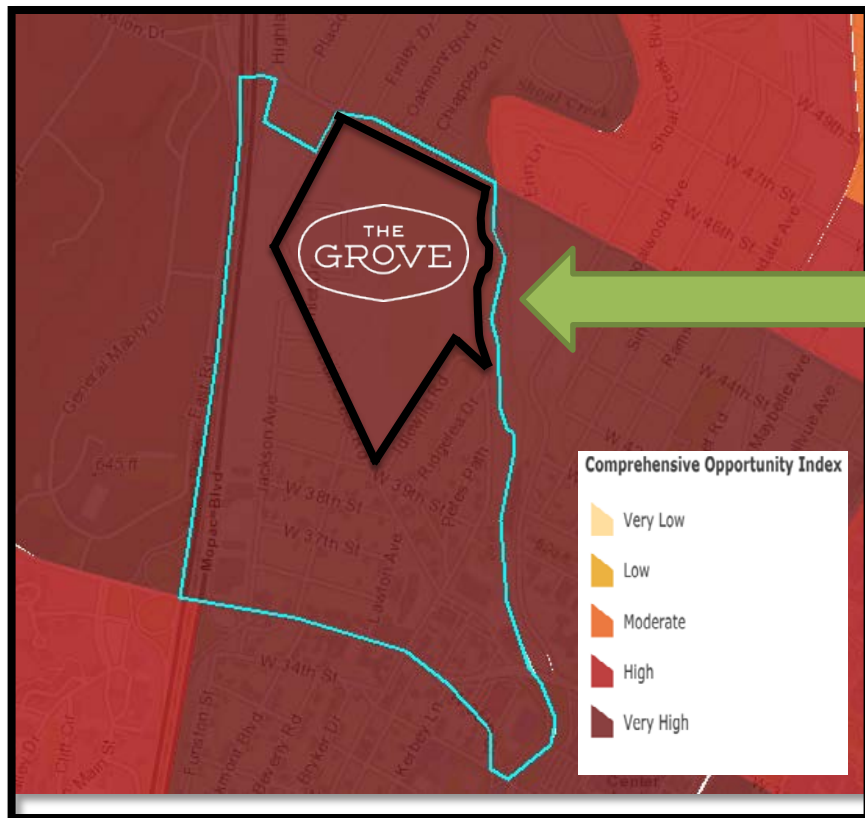
AFFORDABLE HOUSING REQUIRED:

- 10% rental units @ 60% MFI or below = 72 units
- 5% ownership units @ 80% MFI or below = 32 units

NOTE: 10% rental & 5% ownership requirements recommended/approved by NHCD-AHFC



City of Austin Opportunity Map



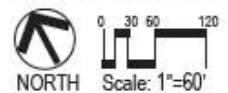
5 Key Points

1. A vibrant and viable mixed-use plan
2. A diverse community of housing
3. Connectivity, to and through
4. **Green spaces, big and small**
5. Innovative environmental measures



Parks and Open Space





5 Key Points

1. A vibrant and viable mixed-use plan
2. A diverse community of housing
3. Connectivity, to and through
4. Green spaces, big and small
5. **Innovative environmental measures**

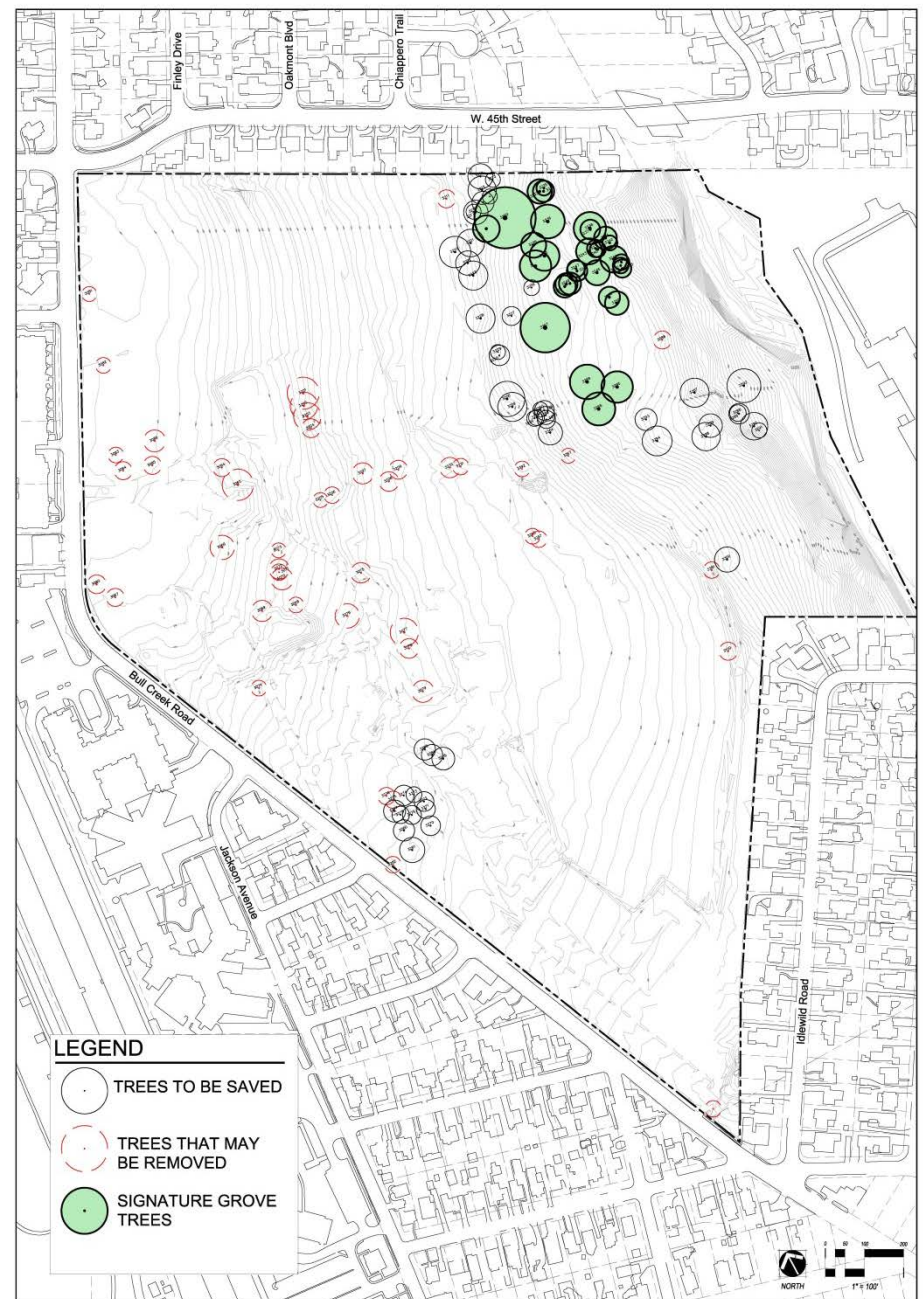


Innovative Water Quality



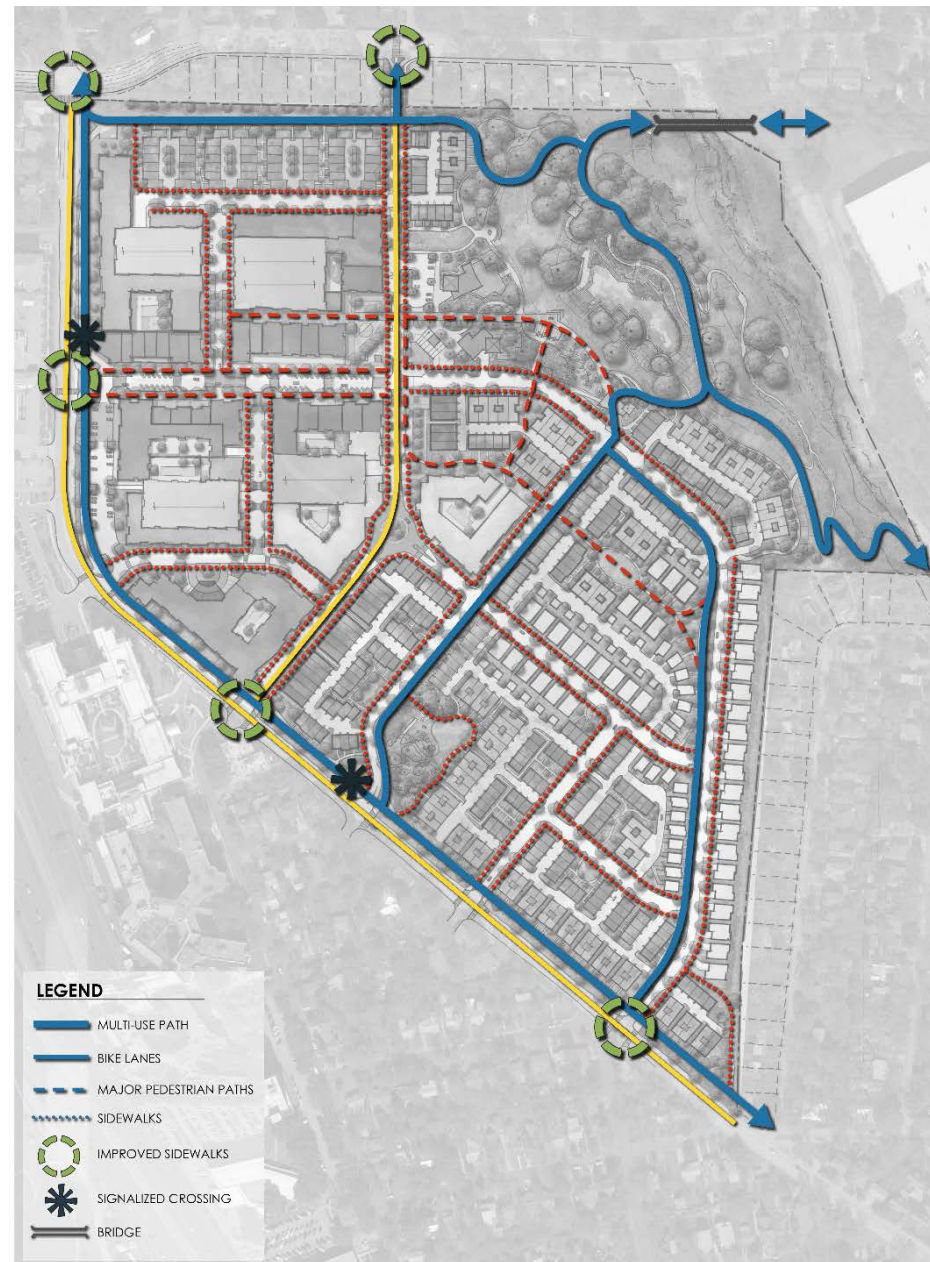
Heritage Oaks

- Extra protection for all protected trees; over-mitigating; additional protection and care for the Signature Grove.
- Prioritizing high-quality protected trees over low-quality heritage trees.



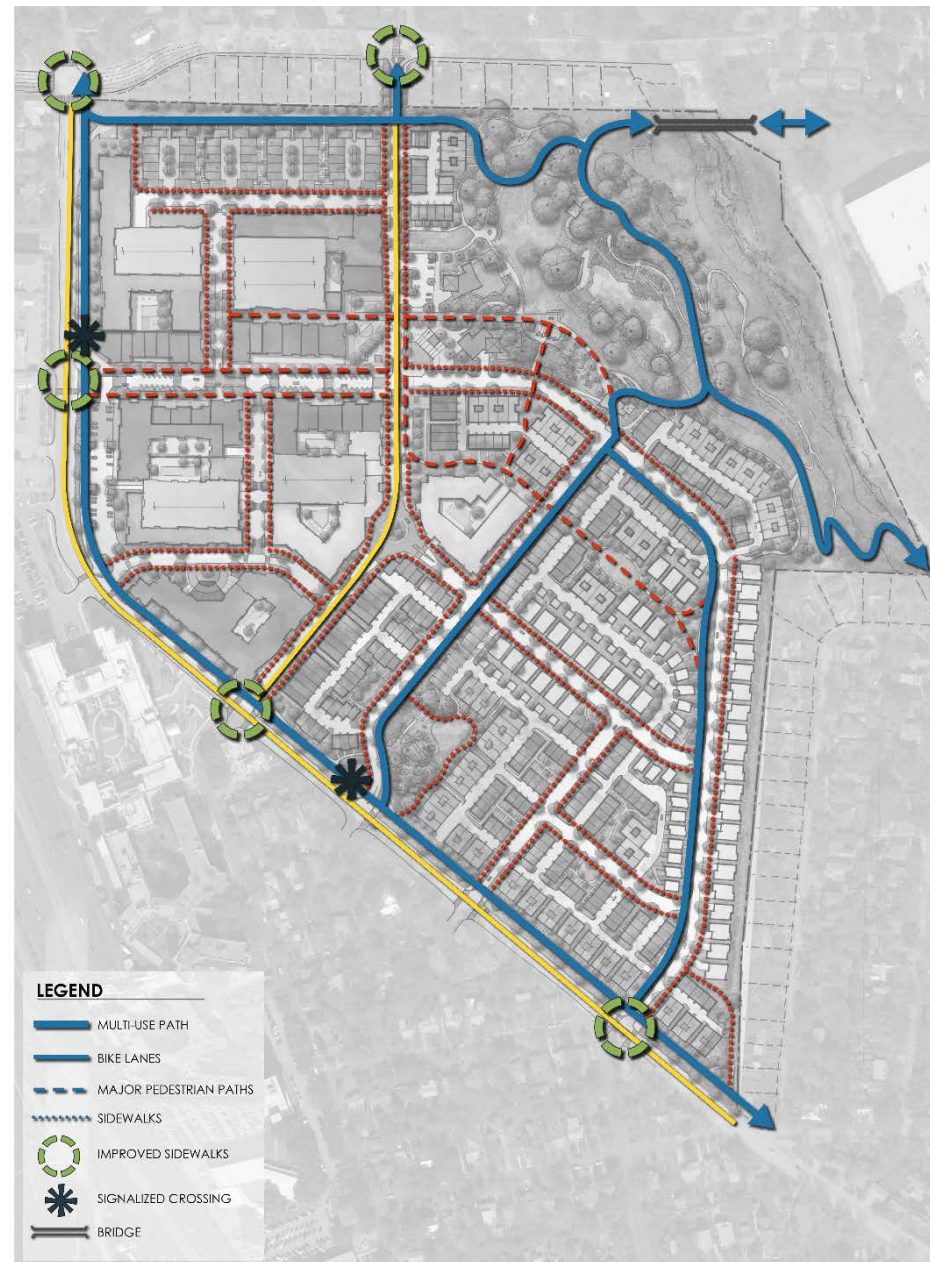
5 Key Points

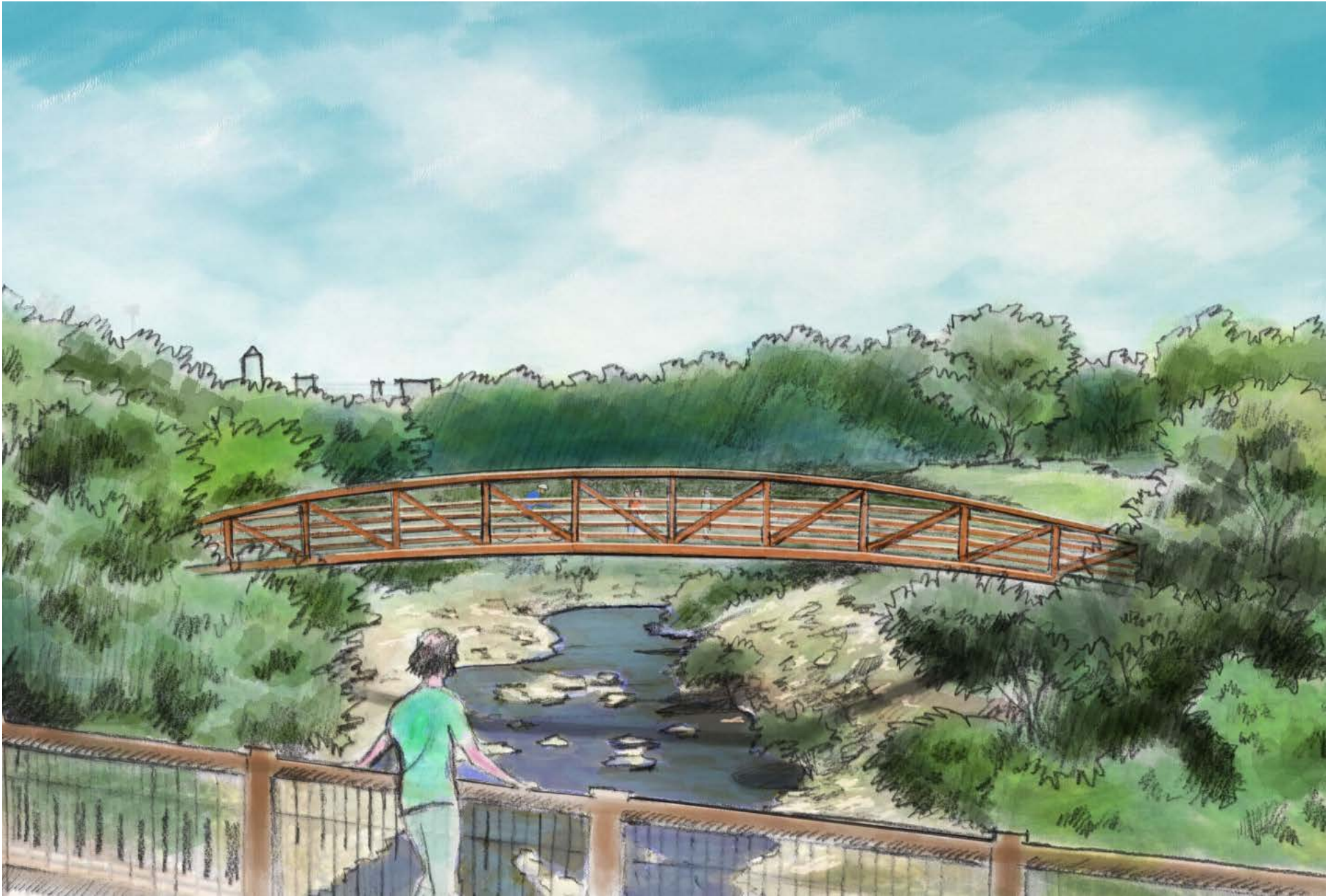
1. A vibrant and viable mixed-use plan
2. A diverse community of housing
3. **Connectivity, to and through**
4. Green spaces, big and small
5. Innovative environmental measures



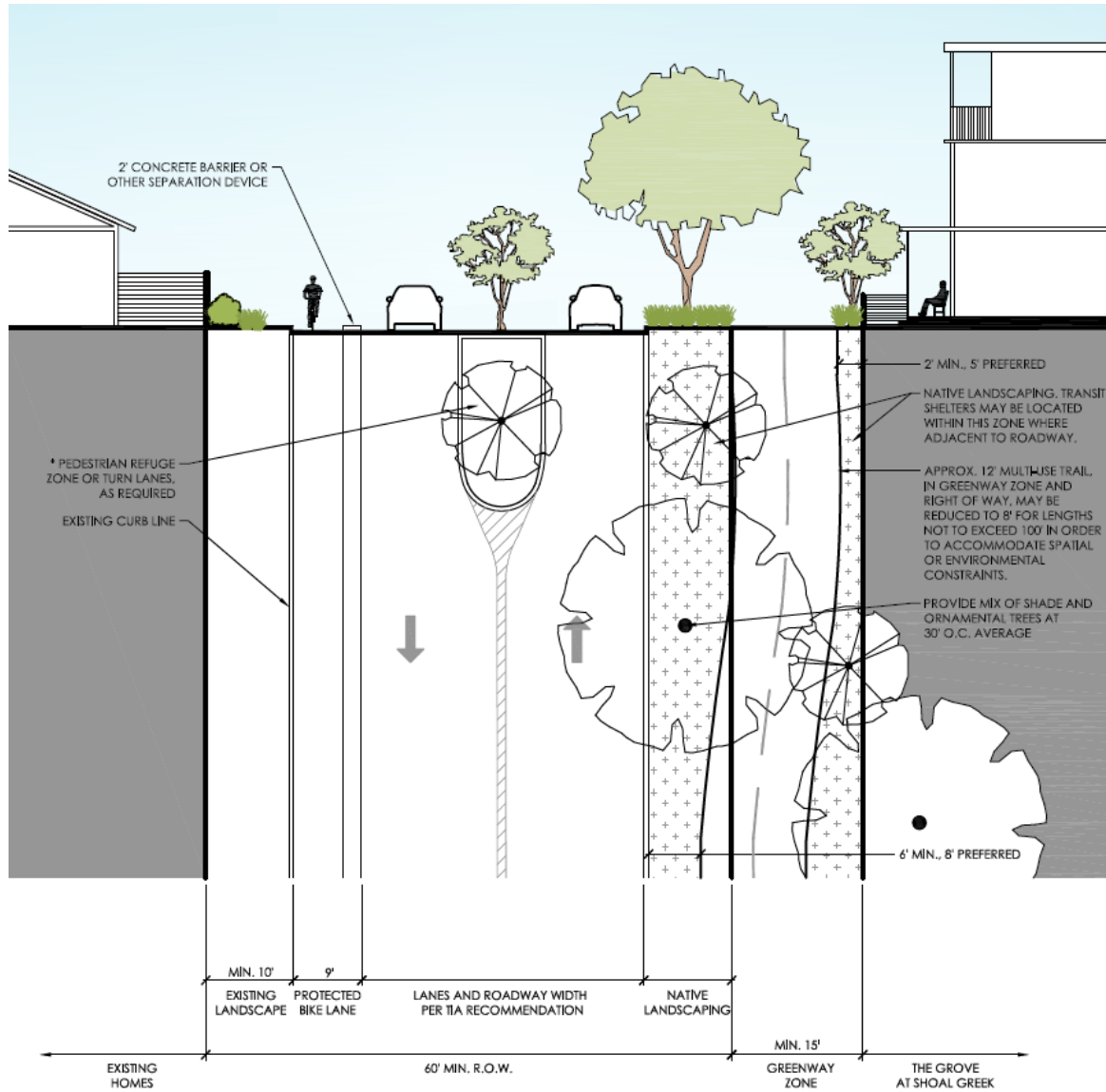
Bike / Ped Improvements:

- Jackson bike lanes,
- Street sections designed for low vehicle speeds,
- Improvements at 45th and Bull Creek,
- Protected southbound Bike Lane(s) on Bull Creek Road.
- Shared use path along Bull Creek Road, north greenbelt, 2 green streets
- Shoal Creek Trail with connection to Ridgelea greenbelt,
- Multiple protected pedestrian crossings
- Bike and ped bridge over Shoal Creek,
- Double bike racks (10% of parking)
- Bike cage in multifamily buildings
- Required showers for office tenants,
- B-Cycle Station reserved
- Improved bus stops
- 8 car-sharing spaces
- Commitment of \$100,000 for area improvements.

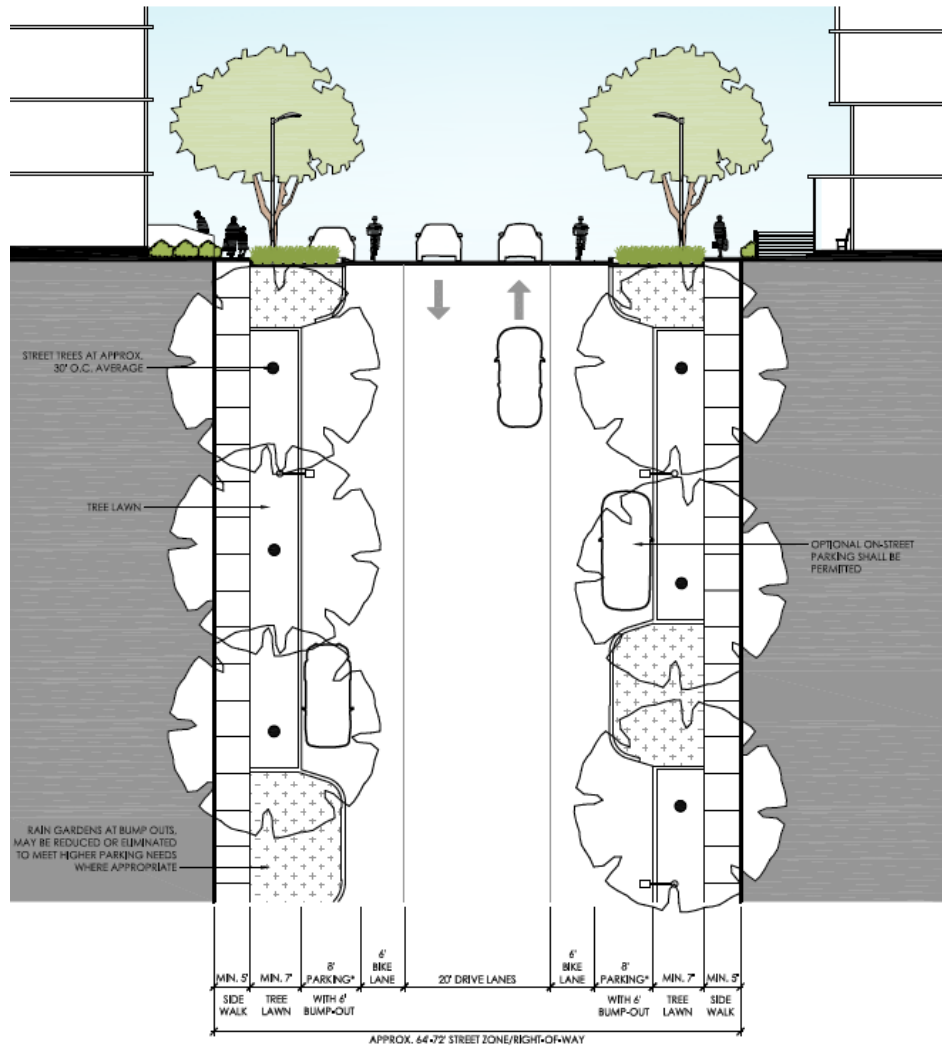




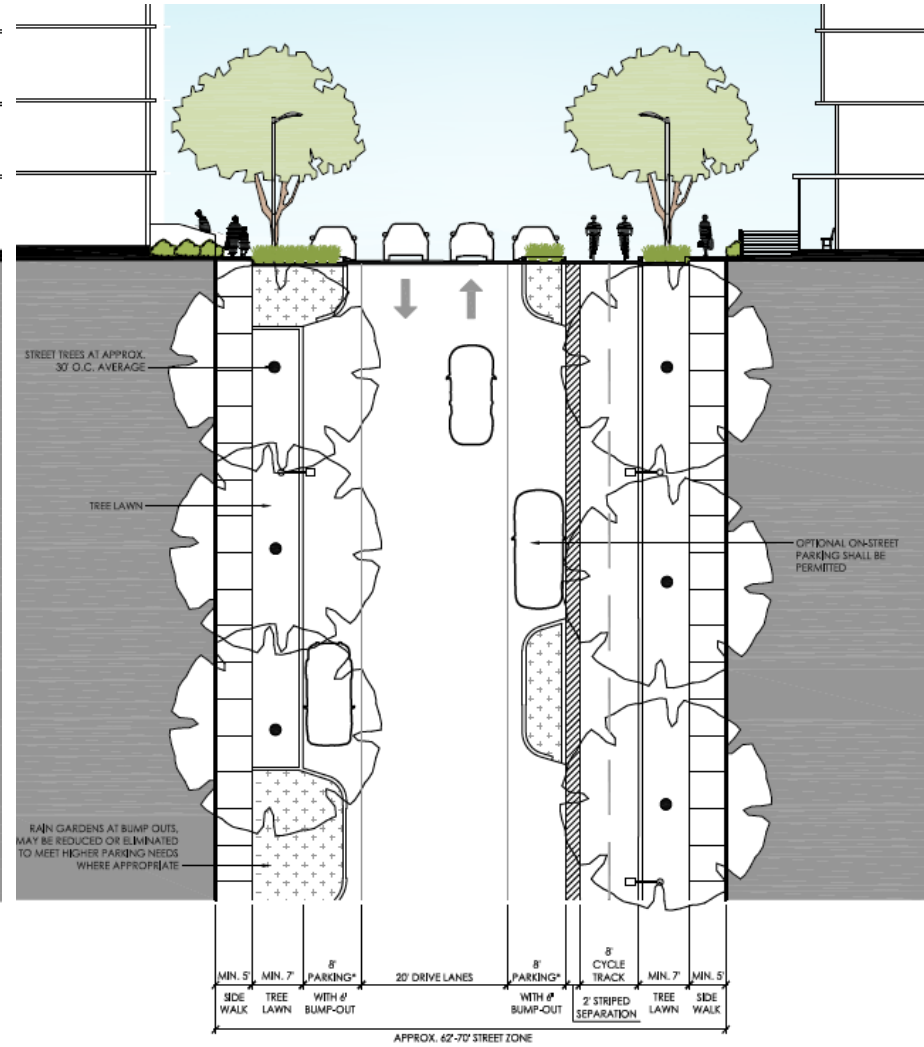
Design Guidelines



Design Guidelines

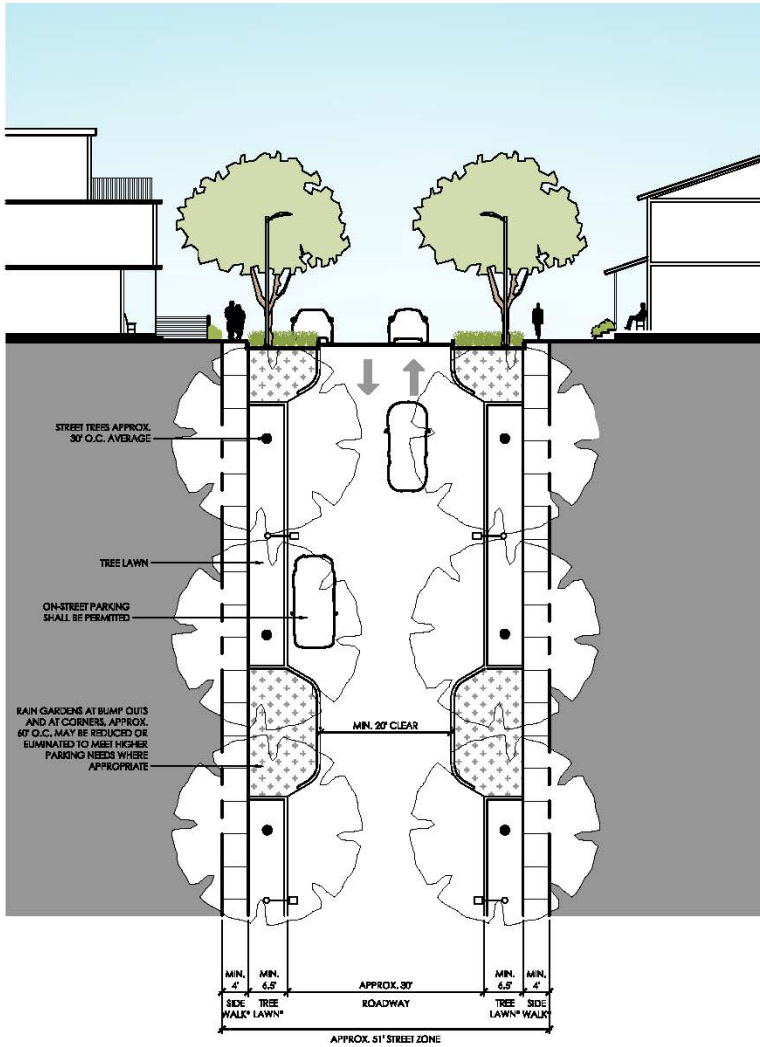


Jackson Avenue Extension

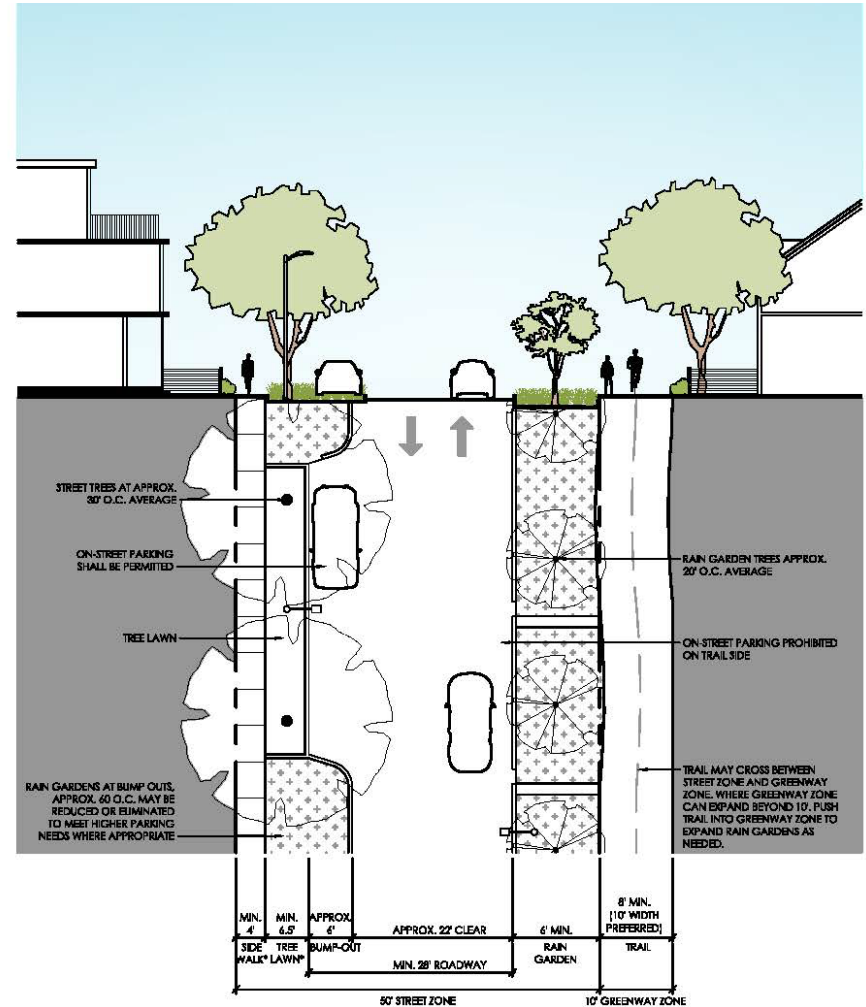


Alternative Jackson Ave. Design

Design Guidelines



Typical Residential Street



Green Street

Legend

Existing Conditions

- Local Service Route
- Limited & Flyer Route
- Crosstown Bus Route
- Special Service Route
- UT Shuttle Route
- MetroRapid Route
- Express Route
- Existing Bicycle Routes
- Existing Bike Lane
- Existing Sidewalk
- Absent Sidewalk
- Multi-Modal Study Boundary
- 3/4 Mile
- Proposed Lone Star Rail Station
- Bus Stop - Sign
- Bus Stop - Covered
- Speed Pillow
- Traffic Circle



Thank You!

