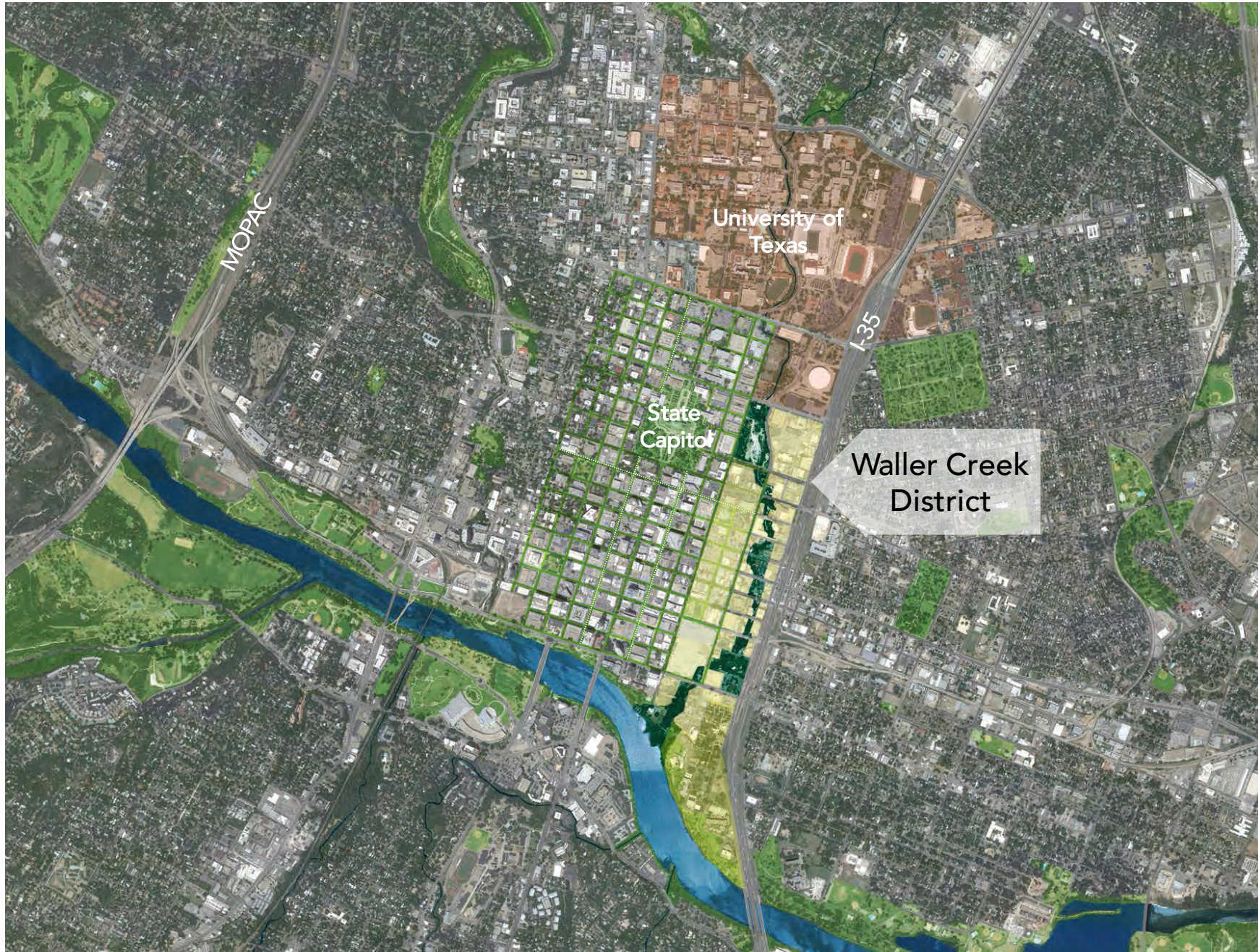


WALLER CREEK CONSERVANCY PROJECT UPDATE

Downtown Commission | August 17, 2016

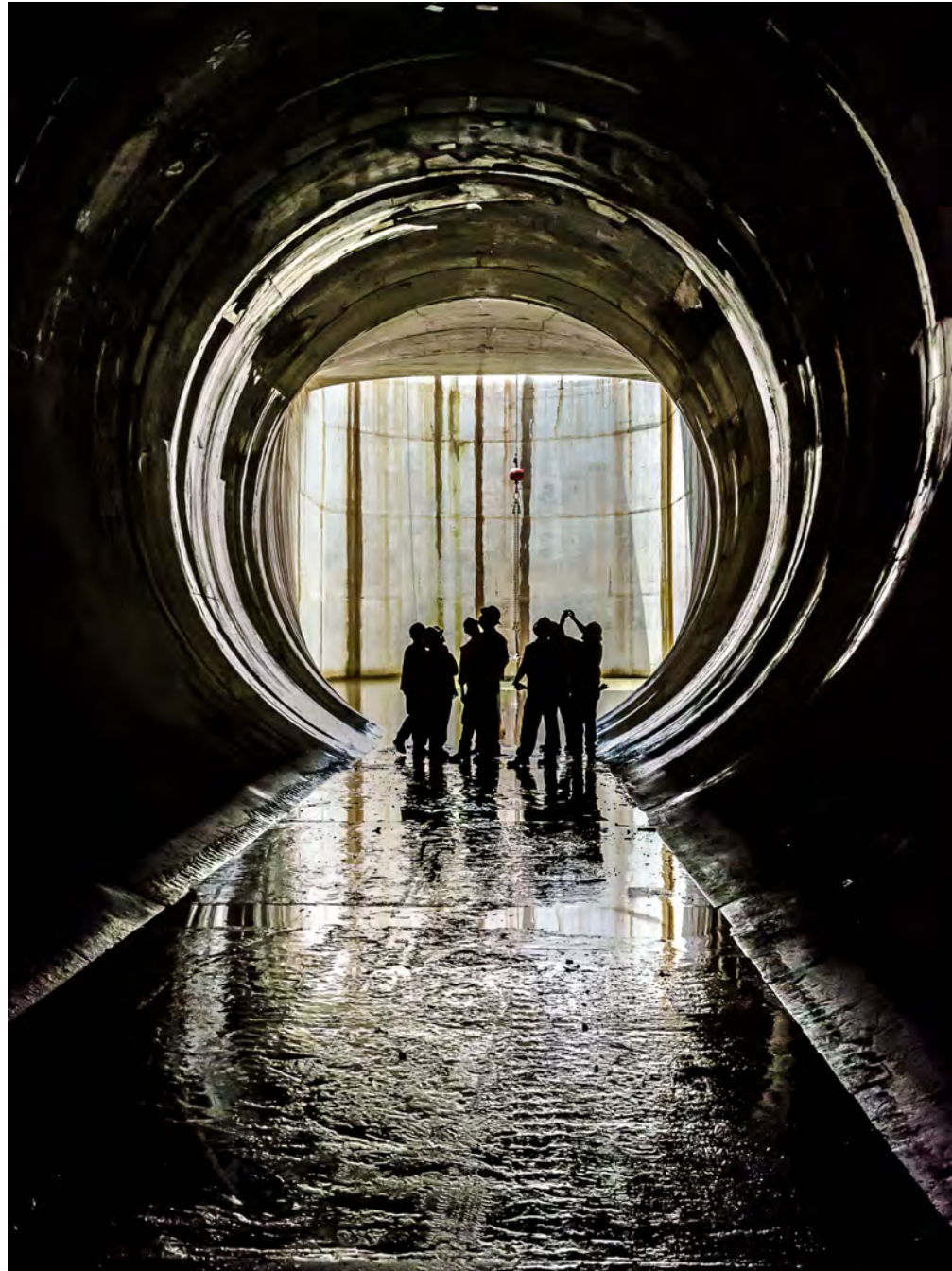


WALLER CREEK DISTRICT



THE
FOUNDATION:

WALLER
CREEK
FLOOD
CONTROL
TUNNEL



URBAN PARKS
CATALYZE
ECONOMIC
DEVELOPMENT



DISCOVERY GREEN



THE HIGH LINE

THE BIG IDEA: A CHAIN OF PARKS

25-ACRES OF RESTORED & IMPROVED OPEN PUBLIC SPACE



A CONTINUOUS, ACCESSIBLE TRAIL ALONG THE RESTORED CREEK



FOUR PARKS

THE DELTA

PALM PARK

THE REFUGE (NEW)

WATERLOO PARK



FOUR PARKS + RESTORED CREEK

THE DELTA

PALM PARK

THE REFUGE
(NEW)

WATERLOO PARK



HISTORY AND ROLE

The Waller Creek Conservancy is a 501c3 non-profit dedicated to restoring and improving the parks, trails, and public open spaces around Waller Creek between Lady Bird Lake and 15th St.

- Founded in 2010 at the request of Councilmembers Sheryl Cole and Randi Shade
- Ongoing partner with the City of Austin
- Committed to engaging all of Austin's diverse and vibrant community

CITY
COUNCIL
APPROVES
DESIGN
PLAN IN
2013



**PAST
PLANNING
EFFORTS**

- **Waller Creek District Master Plan (2010)**
- **Downtown Austin Plan (2011)**
- **Design Waller Creek (2012)**
- **Creek Corridor Framework Plan (2014)**

PUBLIC
PRIVATE
PARTNERSHIP

In 2014, the City of Austin and the Waller Creek Conservancy executed a *Joint Development Agreement* outlining roles and responsibilities:

CoA responsibilities:

- Waller Creek Flood Control Tunnel construction and operation
- Maintenance and management of water systems
- Funding for infrastructure and improvements at City standards

WCC responsibilities:

- Lead role on design and construction of public spaces and parks
- Funding for improvements at a higher level than what the City can provide alone
- Maintenance and operation of public spaces following capital improvements and for providing funding beyond City budget

OUR CORE PRIORITIES

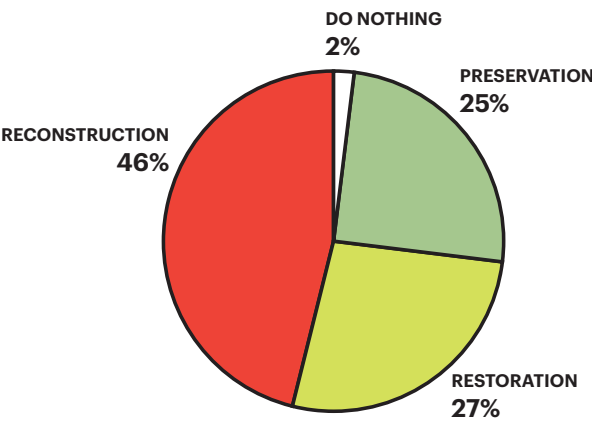
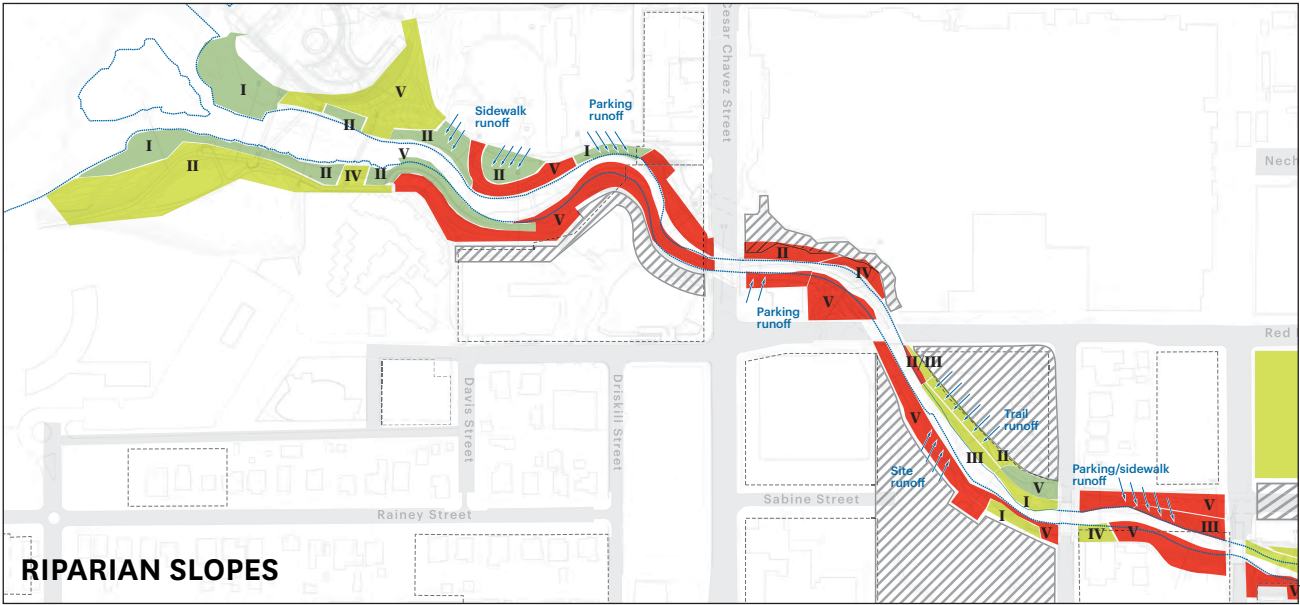
1. RESTORE NATURE
2. PARKS FOR EVERYONE
3. ENHANCE MOBILITY
4. ENGAGE OUR COMMUNITY

RESTORE NATURE

RESTORING NATURE IN THE CITY



STREAMBANK RESTORATION REQUIREMENTS



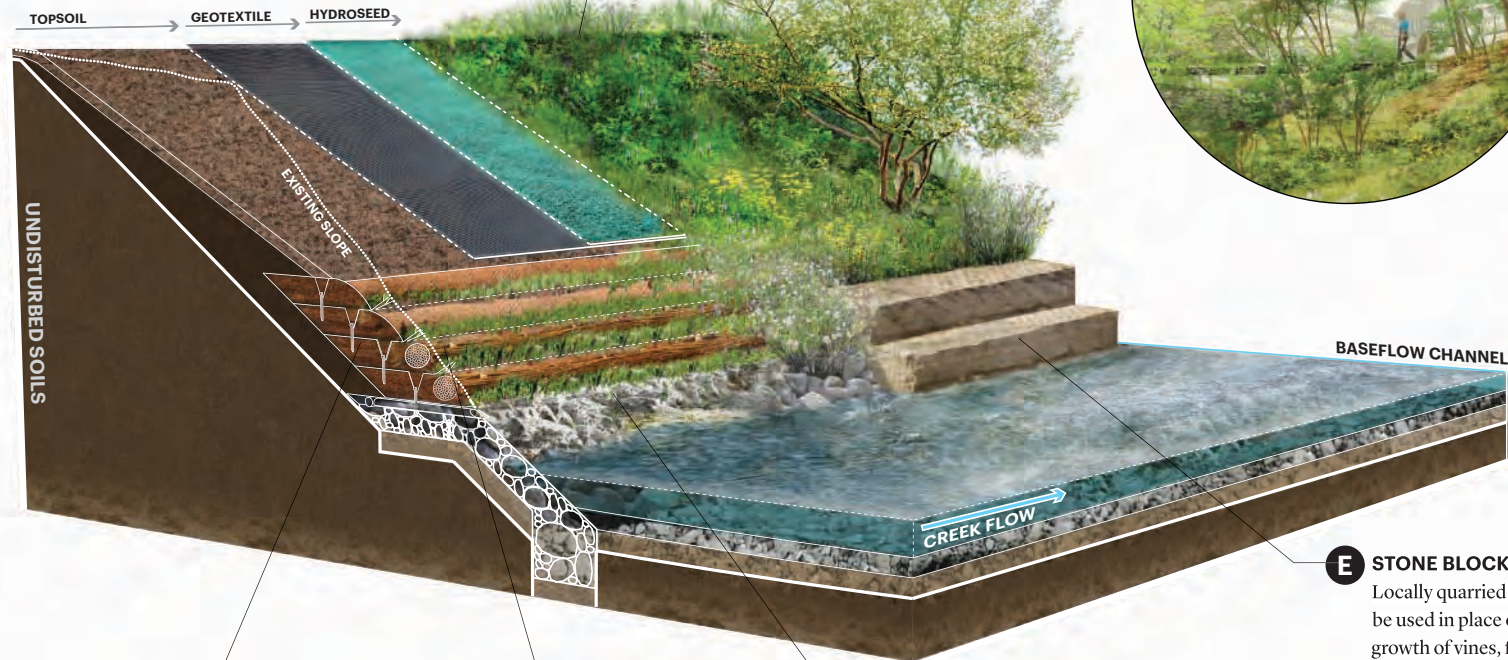
RECONSTRUCTING FAILED SLOPES

F HYDROMULCHING/SEEDING

Applied above baseflow with fast-growing, deep-rooted perennial natives & cover

A VEGETATED GRADED SLOPE

Re-worked native soils graded to 2.5:1 or flatter (where feasible) and planted with groundcover, understory and upper story vegetation (see right)



C

SOIL LIFTS

6"-12" nondegradable geotextile planted with aggressive native mix. Composed of re-worked native and/or engineered soils

D

LIVE STAKES

0.5"-3" diameter, 1.5'-5' long, locally harvested, 2-5 yr old branches installed so tip reaches very moist or wet soil. Recommended downstream of Cesar Chavez only.

B

RIP RAP TOE

Natural or salvaged, angular boulders 18" - 24" with a specific gravity of ≥ 2.4

E

STONE BLOCK WALL

Locally quarried or salvaged, can be used in place of rip rap and for growth of vines, ferns, moss, and other herbaceous plants





PARKS FOR EVERYONE

CREATING
PLACES
FOR
FAMILIES
AND
CHILDREN



CIVIC GATHERING SPACES



PLACES TO ENGAGE NATURE



ENHANCE MOBILITY

ENHANCED CONNECTIVITY AND MOBILITY THROUGH AN EXTENDED TRAIL NETWORK



The pontoon bridge extends the urban trail network to South Austin.



ENGAGE OUR COMMUNITY

CONNECTING
PEOPLE
THROUGH
LOCAL
AUSTIN
CULTURE



COMMUNITY EVENTS & PUBLIC ENGAGEMENT



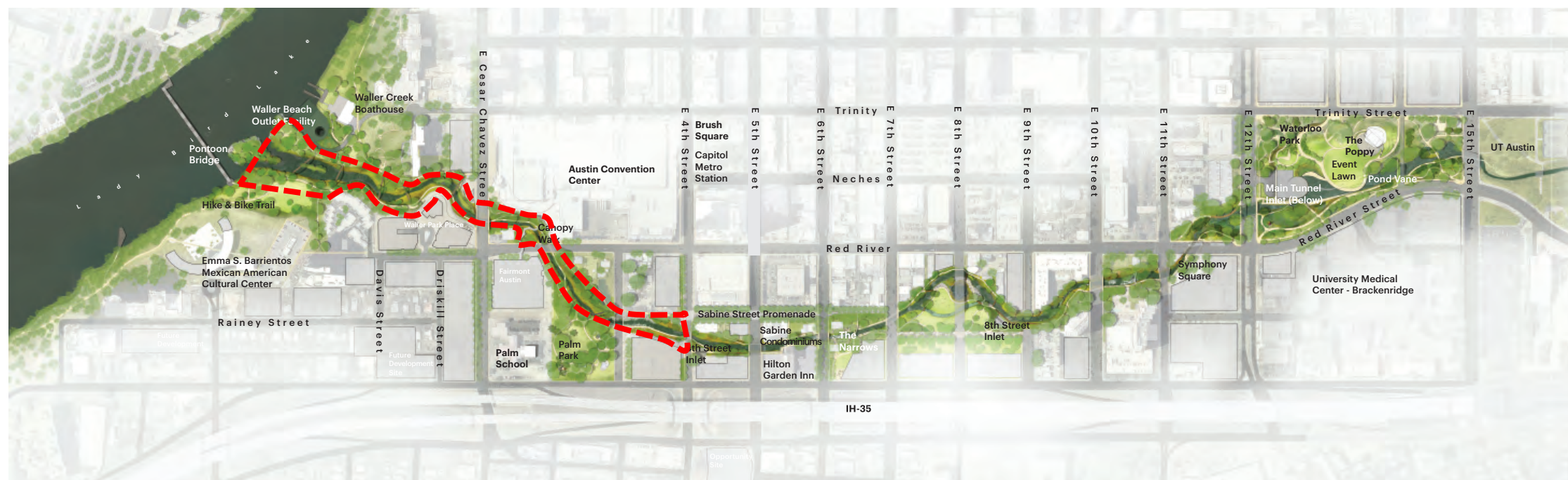
WHAT ARE WE DOING NOW?

PHASE 1 PROJECTS



CREEK DELTA

10 acres | 6,000 LF trails









PALM PARK

4 acres



PALM PARK: TODAY



PALM PARK



PALM SCHOOL



WATERLOO PARK

11 acres | 10,000 LF trails



WATERLOO PARK



Texas
State
Capitol
Complex

University
of Texas

Innovation
Zone

University of Texas
Medical District

I-35 Improvement
Project

Central Health
Brackenridge Campus

Central East
Austin Neighborhood

CENTRAL HEALTH BRACKENRIDGE CAMPUS: CONTEXT FOR THE FUTURE

Genialer



11 acres of parkland
1.5 miles of trails

WATERLOO PARK











THANK YOU