

Item D-01

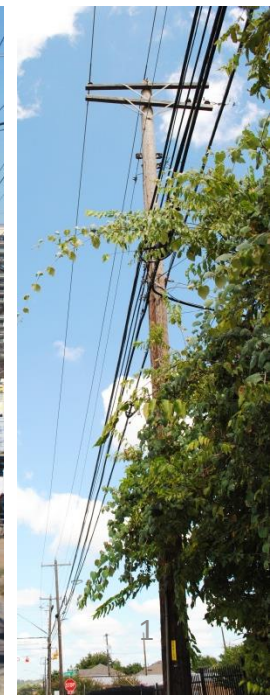
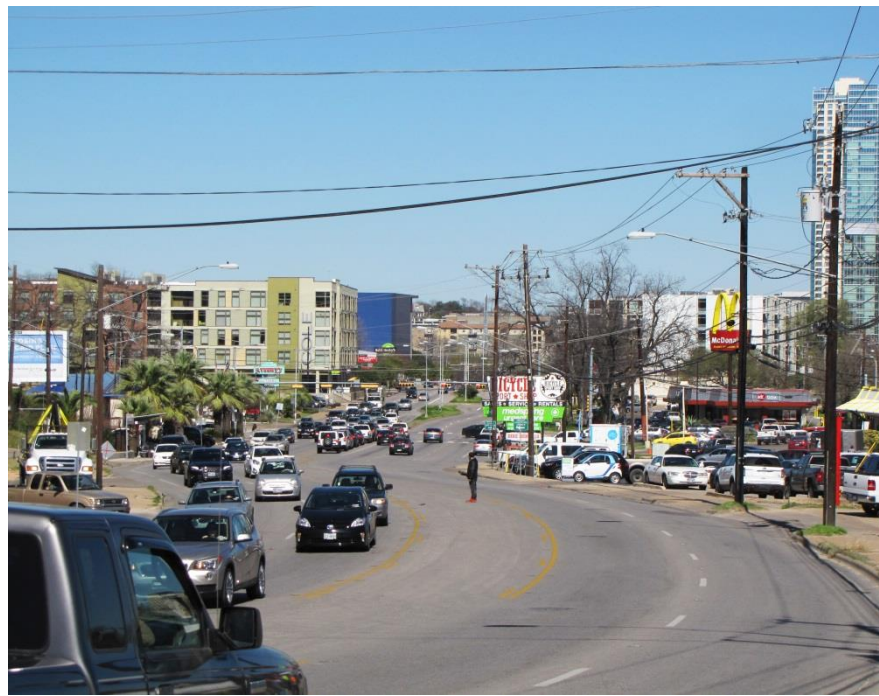
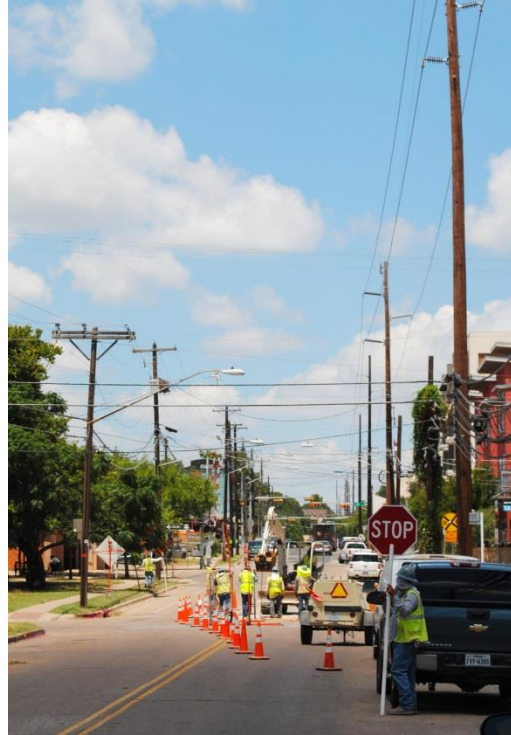
Planning Commission

October 11, 2016

Code Prescription:

# Fiscal Health

**CODENEXT**  
SHAPING THE AUSTIN WE IMAGINE



- 1. Existing conditions**
- 2. Austin's vision for fiscal health**
- 3. Code Prescriptions**
- 4. Next steps**



# Existing Conditions: Public Infrastructure

Item D-01

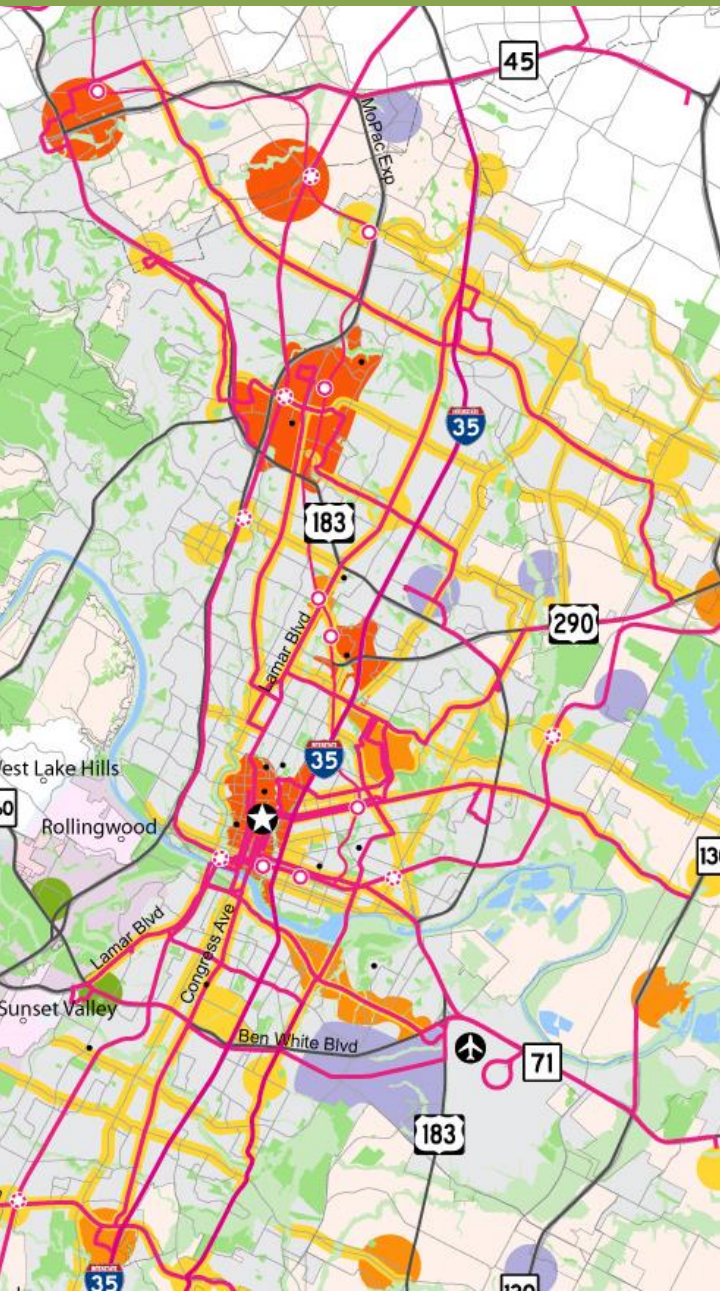
3 of 20











## Vision:

Provide adequate, uninterrupted service to citizens regardless of any unforeseen economic or demographic changes.



## *What can the LDC do:*

- Facilitate fiscally sound investment for both public and private interests
- Apply transect and conventional code in strategic locations that maximize public investment and minimize long term obligations

**A. Build**

**B. Maintain**

**C. Serve**

**D. Be Strategic**



- Case-by-case negotiations
- Need to improve coordination
- Need to improve connectivity
- High cost of off-site capital improvements
- Strain on existing infrastructure





## 1. Build to city standards

- Private infrastructure required to meet City standards

## 2. Connect the networks

- Coordinate placement of utilities and street connectivity in subdivisions *from the beginning*

## 3. Reduce the regional impact

- On-site mitigation with district in mind

## 4. Street Impact Fees



**A. Build**

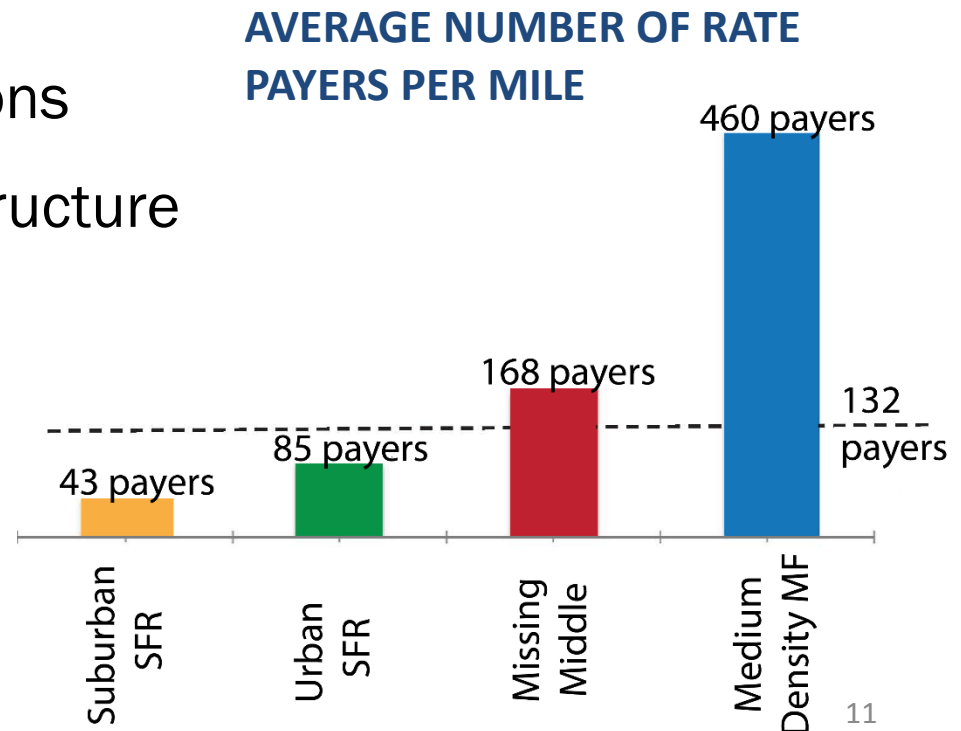
**B. Maintain**

**C. Serve**

**D. Be Strategic**



- Low density = high maintenance costs
- Cul-de-sacs as publicly funded private drives
- Outdated street cross-sections
- Privately maintained infrastructure
- Conflicting standards



# Maintain: What's the Prescription?

## 1. Compact & Connected

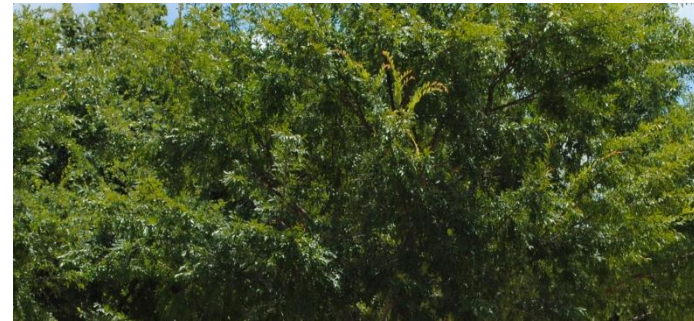
- Reduces length of utility lines while increasing customers per mile

## 2. Align City standards

## 3. Privately maintained, publicly accessible

- Credit for privately maintained parkland

## 4. Coordinate with Mobility Plan





**A. Build**

**B. Maintain**

**C. Serve**

**D. Be Strategic**

- Need to improve service delivery
- Increased service costs
- Costly review process





## 1. New subdivision provisions

- More connected, clearer standards

## 2. Long term growth strategy

- Create areas of customers, improve connectivity for emergency services

## 3. New process and procedures

- Predictable timeframes and application path



**A. Build**

**B. Maintain**

**C. Serve**

**D. Be Strategic**



- Financing current development patterns
- Old vs. new
- Need to coordinate plans with Imagine Austin



## 1. Public-Private partnerships

- Toolkit to attract private capital investment

## 2. Capital Improvement Program

- Focus on Strategic Investment Areas

## 3. Reinforce Centers & Corridors

## 4. Development bonuses

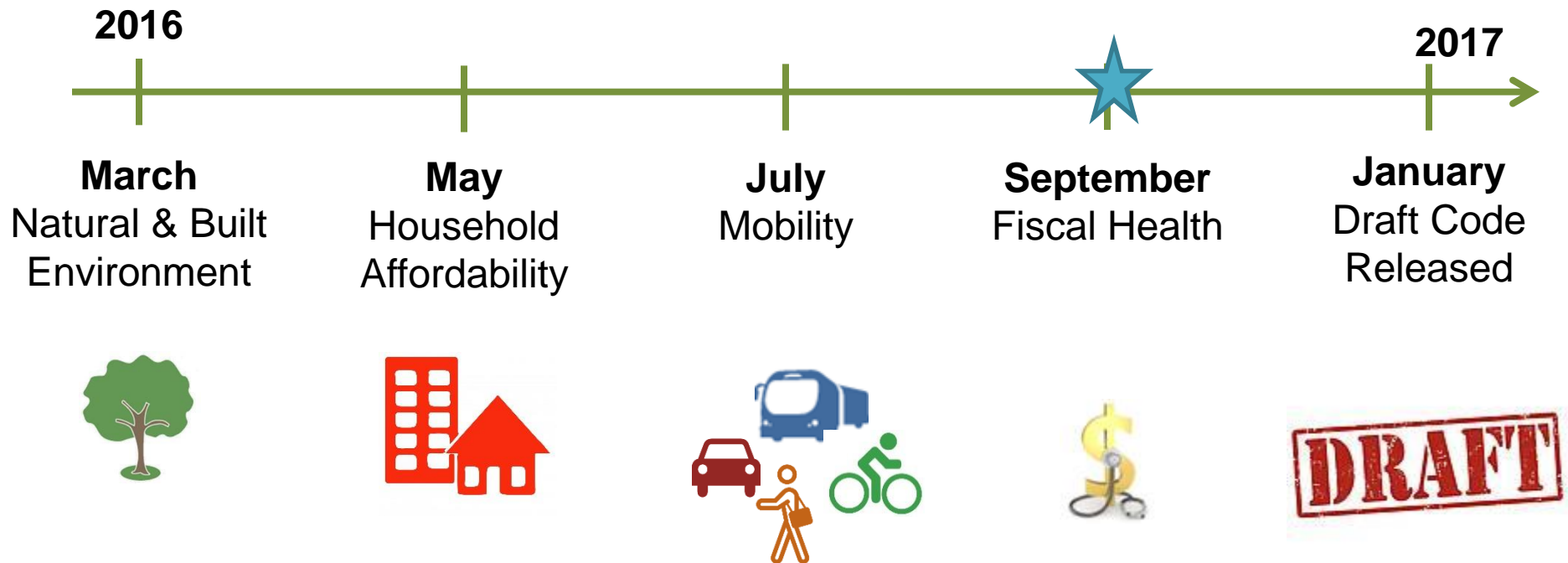
## 5. Parkland Dedication and CIP

## 6. Align with Transportation Plan





# Item D-01 Schedule for the 4 Code Prescription Papers 19 of 20



# Questions?

**CODENEXT**  
SHAPING THE AUSTIN WE IMAGINE

