



## Austin/Travis County Health and Human Services Department

*The role of public health is to:*

**PROMOTE** community-wide wellness,

**PREVENT** disease, and

**PROTECT** the community from infectious diseases, environmental hazards, and epidemics



---

# HEALTH AND HUMAN SERVICES IN AUSTIN/TRAVIS COUNTY

## THE ASIAN QUALITY OF LIFE COMMITTEE MEETING

October 18, 2016

Stephanie Hayden, Deputy Director, Austin/Travis County Health and Human Services

# Health and Human Services

## *A/TCHHSD Mission, Vision and Purpose*

- Vision: Our community will be the healthiest in the nation
- Mission: To prevent disease, promote health and protect the wellbeing of our community
- Purpose:
  - Promote community-wide wellness, preparedness and self-sufficiency
  - Prevent illness, injury and disease
  - Protect the community from infectious diseases, environmental hazards and epidemics

# Health & Human Services

## *Agenda*

- Health and Human Services Department
  - Divisions
  - Roles and Responsibilities
- Changing Demographic Profiles of the Community
- Social Determinants of Health
- Health Disparities
- Chronic Disease Epidemic Among People of Color
- Public Health Emergency Preparedness

# Health and Human Services Divisions

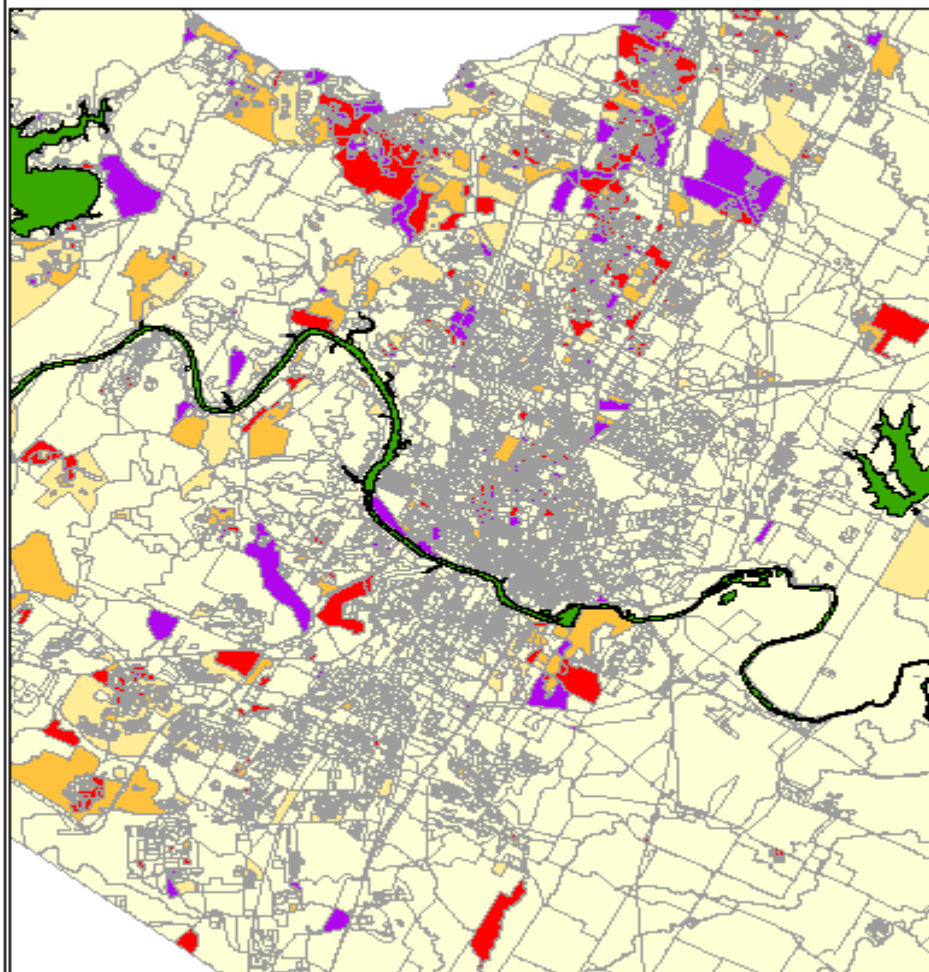
---

- Director
  - PIO
  - Auditor
  - Community Health Education
  - Administrator
- Administration
  - Accounting
  - Budget
  - Contract Management
  - Facilities
  - Finance
  - Human Resources
  - Information Systems
- Community Services
  - Family Health
  - Neighborhood Centers
  - WIC
  - Youth Development
- Disease Prevention and Health Promotion
  - Chronic Disease
  - Communicable Disease
  - Immunizations
- Environmental Health
  - Restaurant Inspection
  - Rodent and Vector
  - Pool Safety
- Health Equity and Community Engagement
  - Health Equity
  - HIV Resources Administration and Planning Council
  - Planning and Evaluation
  - Social Services Policy
- Epidemiology & Public Health Preparedness
  - Public Health Preparedness
  - Epidemiology/Surveillance

# Health & Human Services

## Changing Demographic Profile

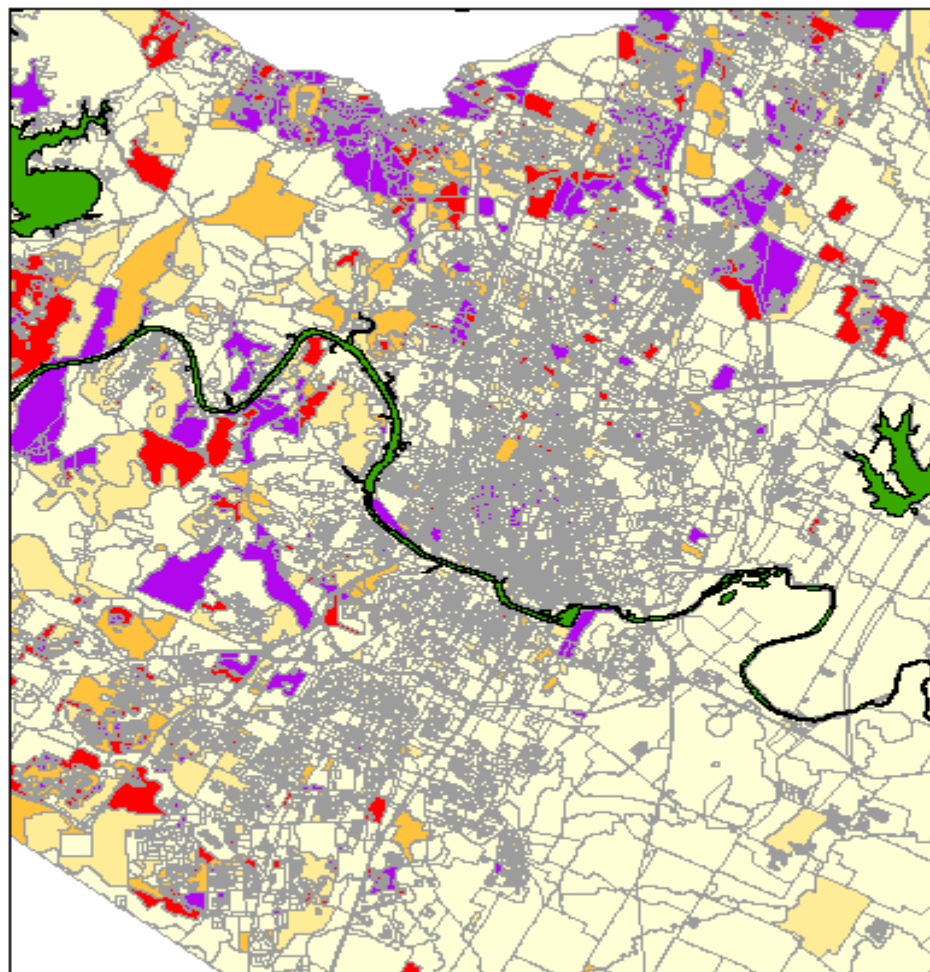
### Changing Asian Landscape--Travis County Asian Population Concentrations, 2000 and 2010



**Census 2000 Data**  
Census Blocks

Percentage of the  
Total Population  
that is  
Asian

Less than 5%
5% to 7.5%
7.5% to 10%
10% to 15%
15% Plus

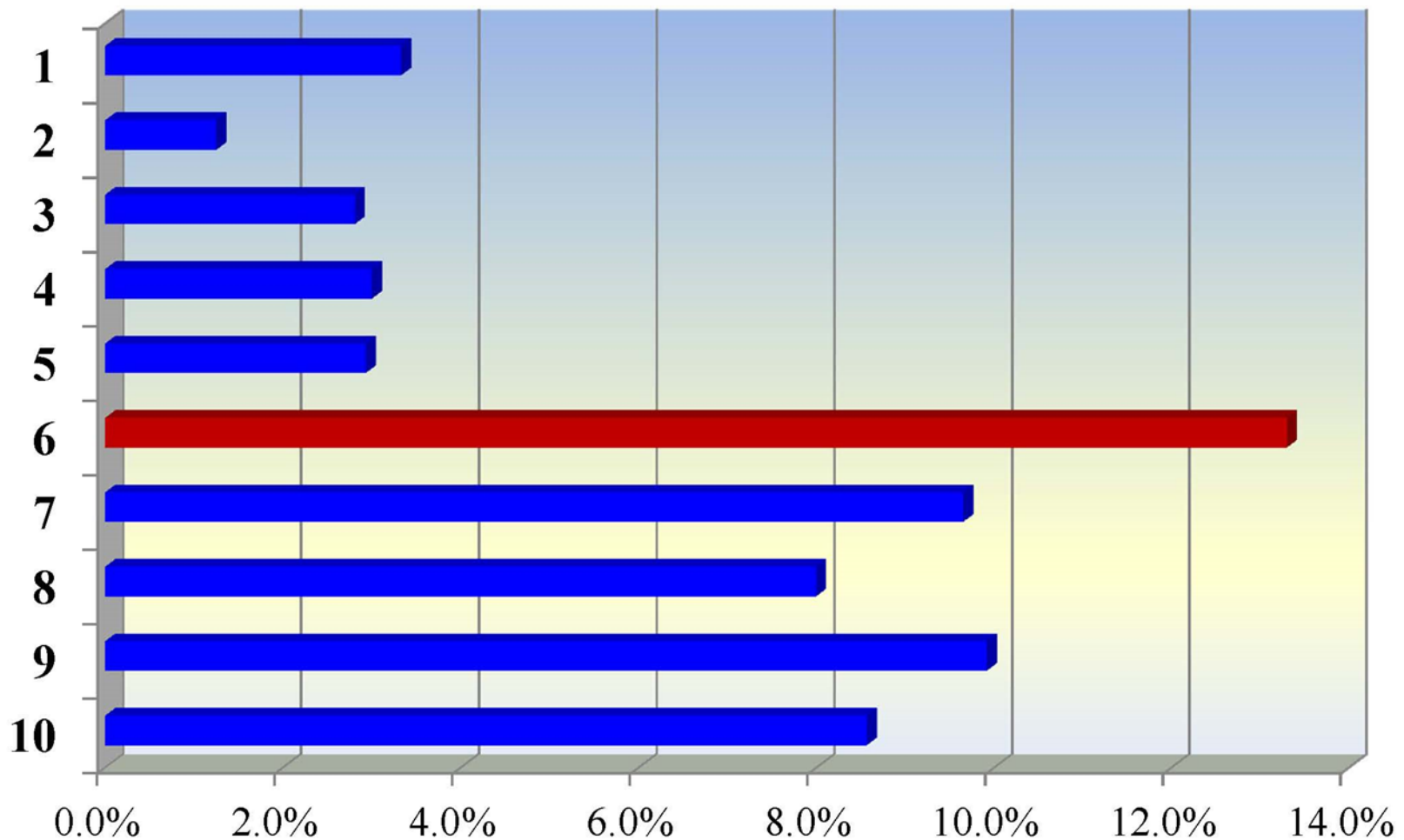


**Census 2010 Data**  
Census Blocks

Percentage of the  
Total Population  
that is  
Asian

Less than 5%
5% to 7.5%
7.5% to 10%
10% to 15%
15% Plus

## Asian Share of Total Population by Council District



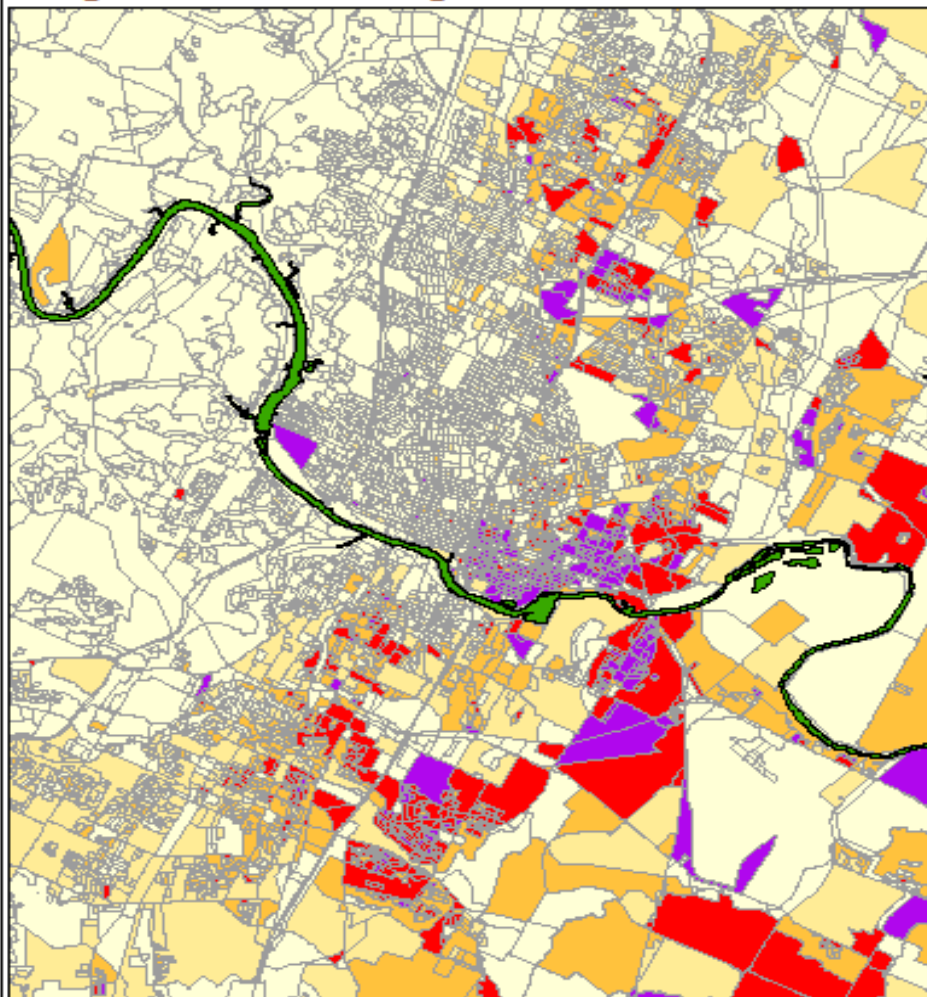


# Health & Human Services

## Changing Demographic Profile

### Changing Hispanic Landscape

Hispanic–Latino Population Concentrations, 2000 and 2010

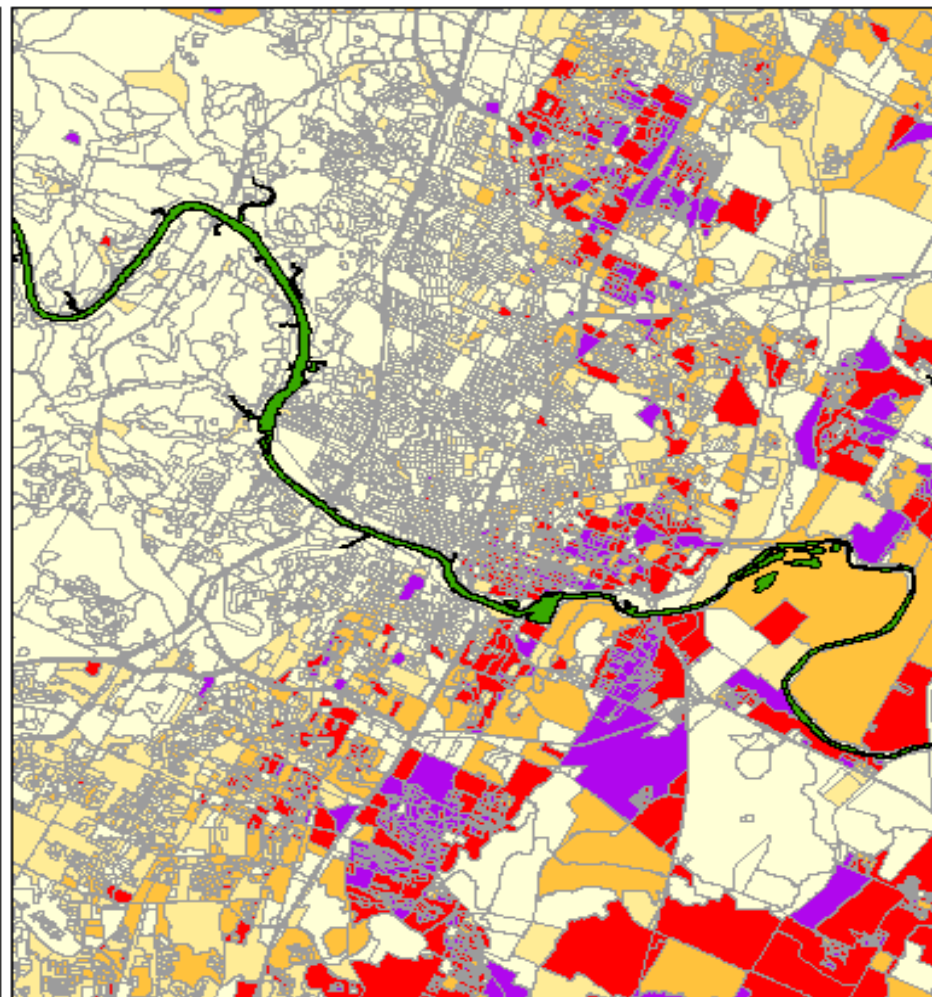


**Census 2000 Data**  
**Census Blocks**

Percentage of the  
Total Population  
that is of  
Hispanic Origin

Less than 20%
20% to 40%
40% to 60%
60% to 80%
80% Plus

Map produced by Esri, Inc. for the Department of Housing, City of Austin, February 2011.

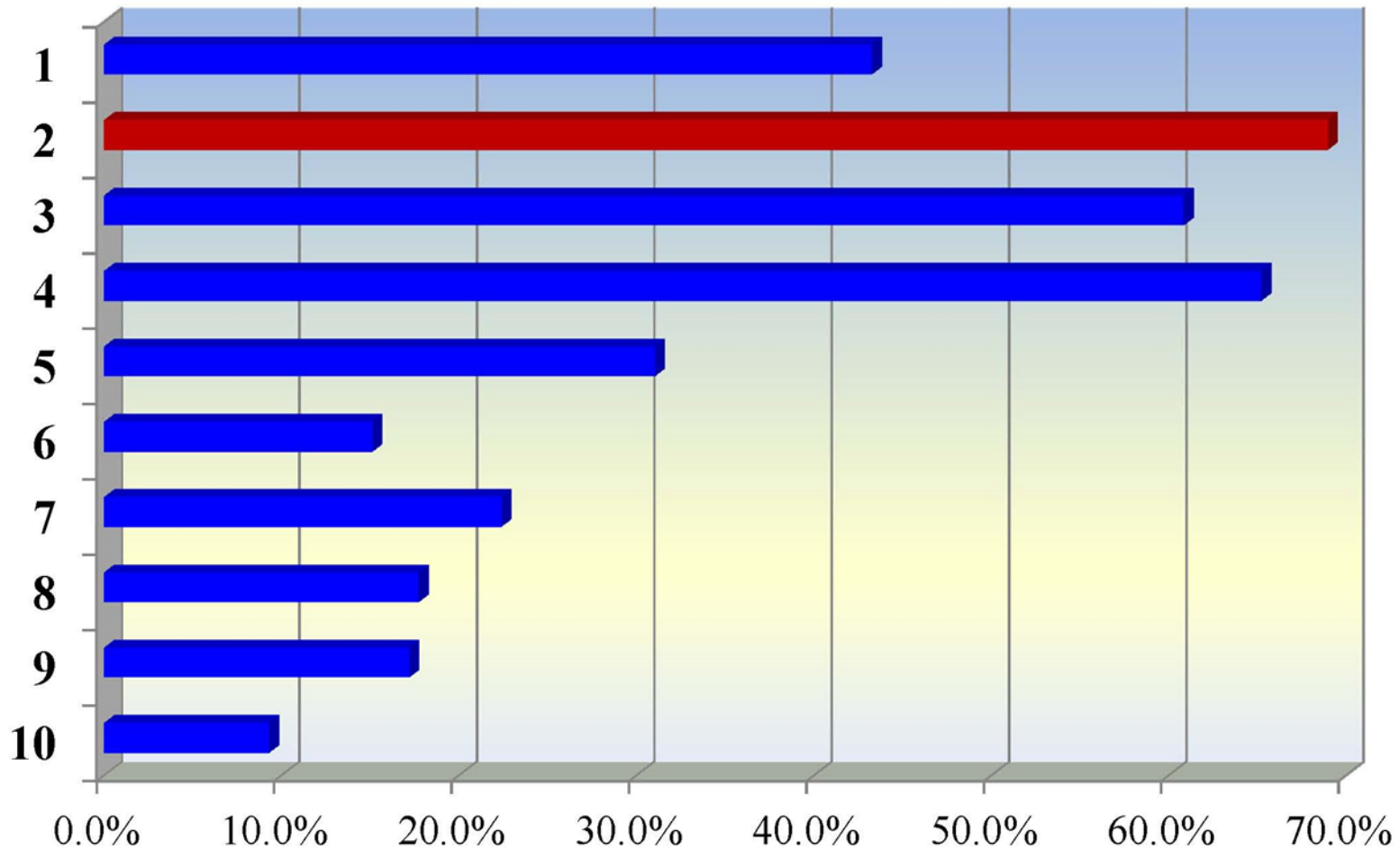


**Census 2010 Data**  
**Census Blocks**

Percentage of the  
Total Population  
that is of  
Hispanic Origin

Less than 20%
20% to 40%
40% to 60%
60% to 80%
80% Plus

## Hispanic Share of Total Population by Council District

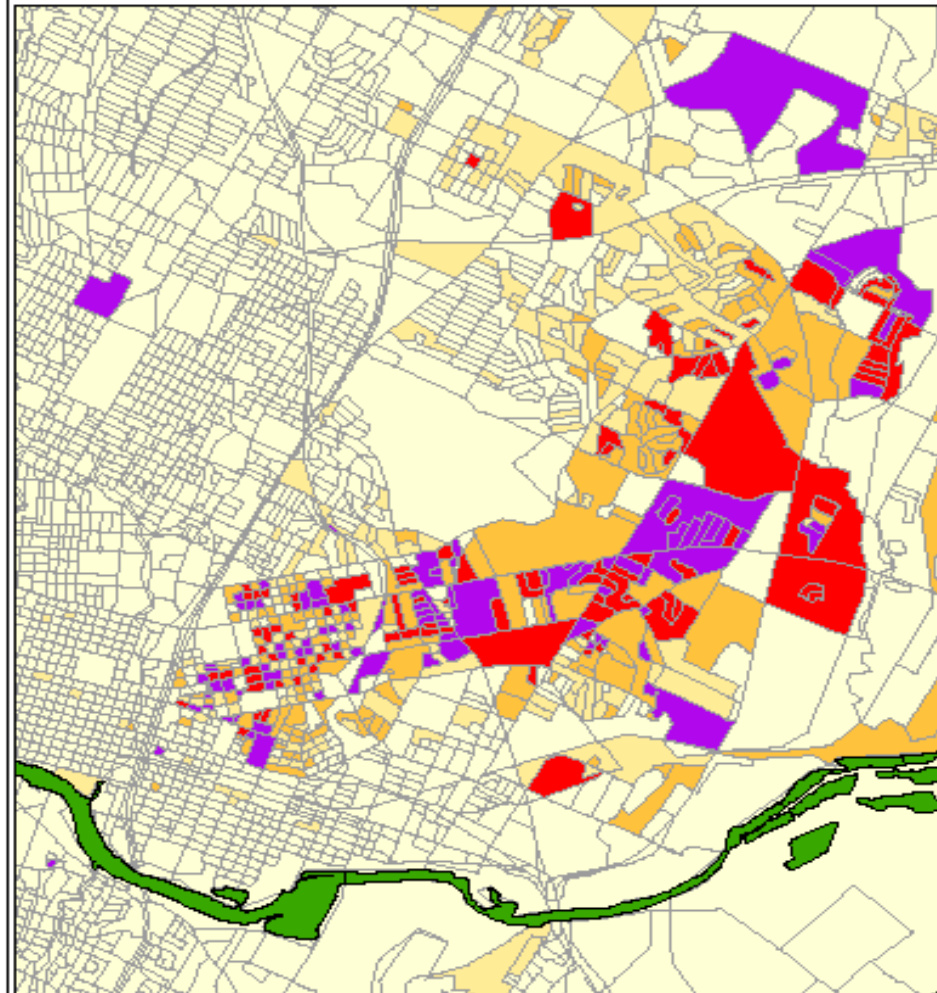




# Health & Human Services

## Changing Demographic Profile

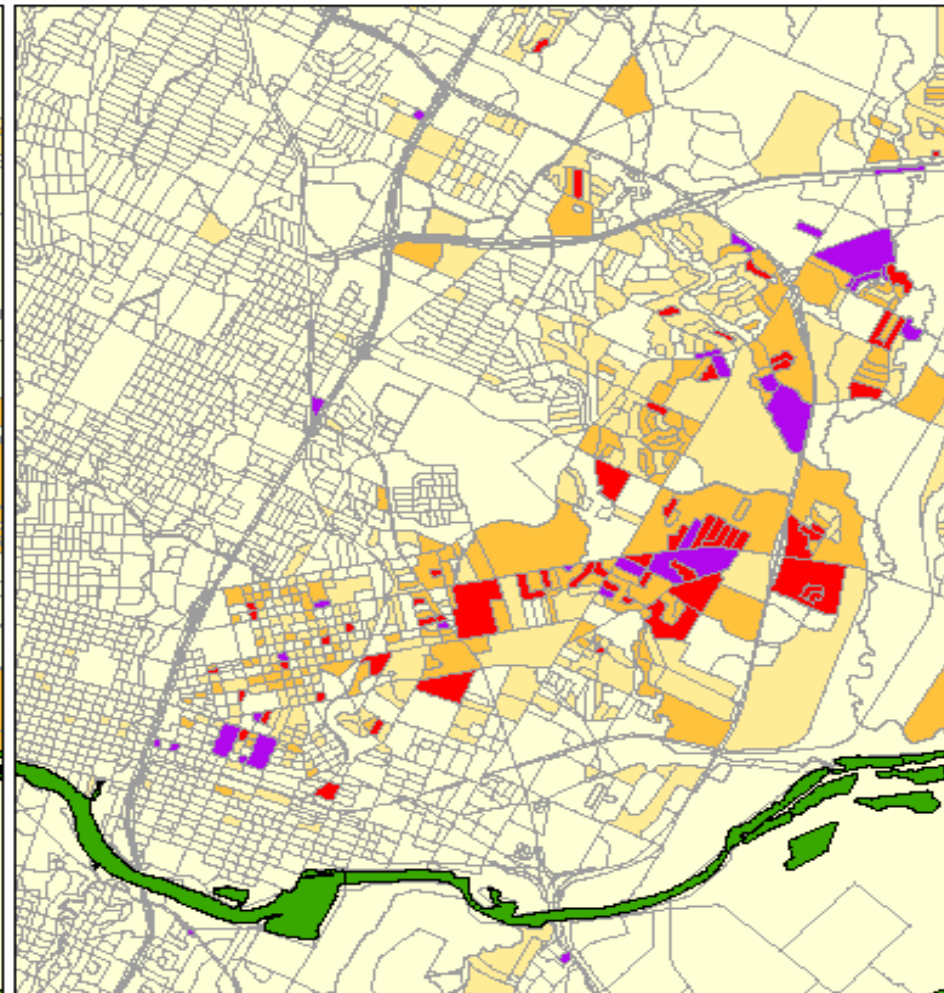
### Changing African American Landscape--Eastern Core African American Population Concentrations, 2000 and 2010



**Census 2000 Data**  
**Census Blocks**

Percentage of the  
Total Population  
that is  
African American

Less than 20%
20% to 40%
40% to 60%
60% to 80%
80% Plus

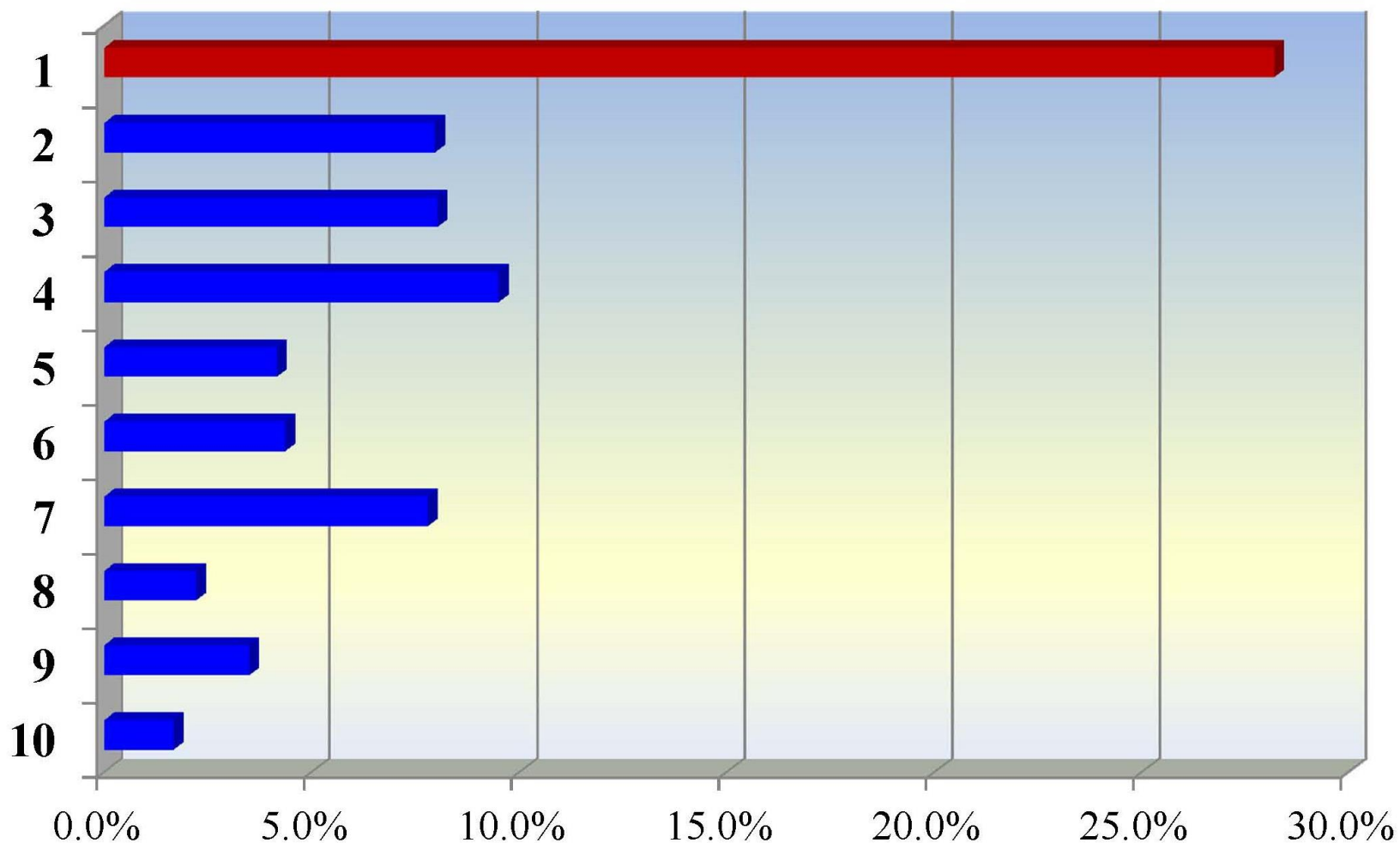


**Census 2010 Data**  
**Census Blocks**

Percentage of the  
Total Population  
that is  
African American

Less than 20%
20% to 40%
40% to 60%
60% to 80%
80% Plus

## African American Share of Total Population by Council District



# Health & Human Services

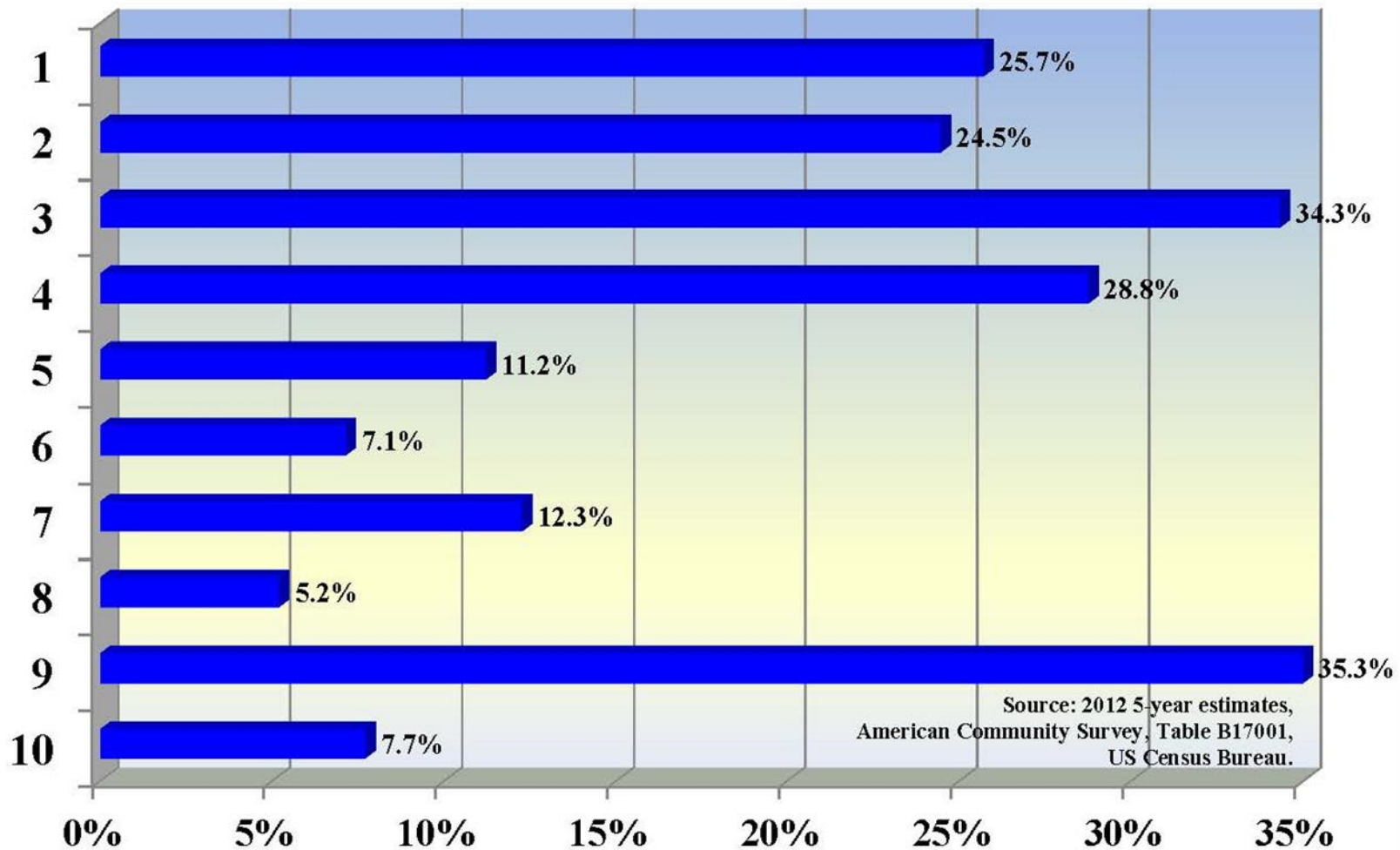
*Eliminating Health Disparities and Improving Social Determinants*



# Health & Human Services

*Eliminating Health Disparities and Improving Social Determinants*

## Poverty Rates by Council District

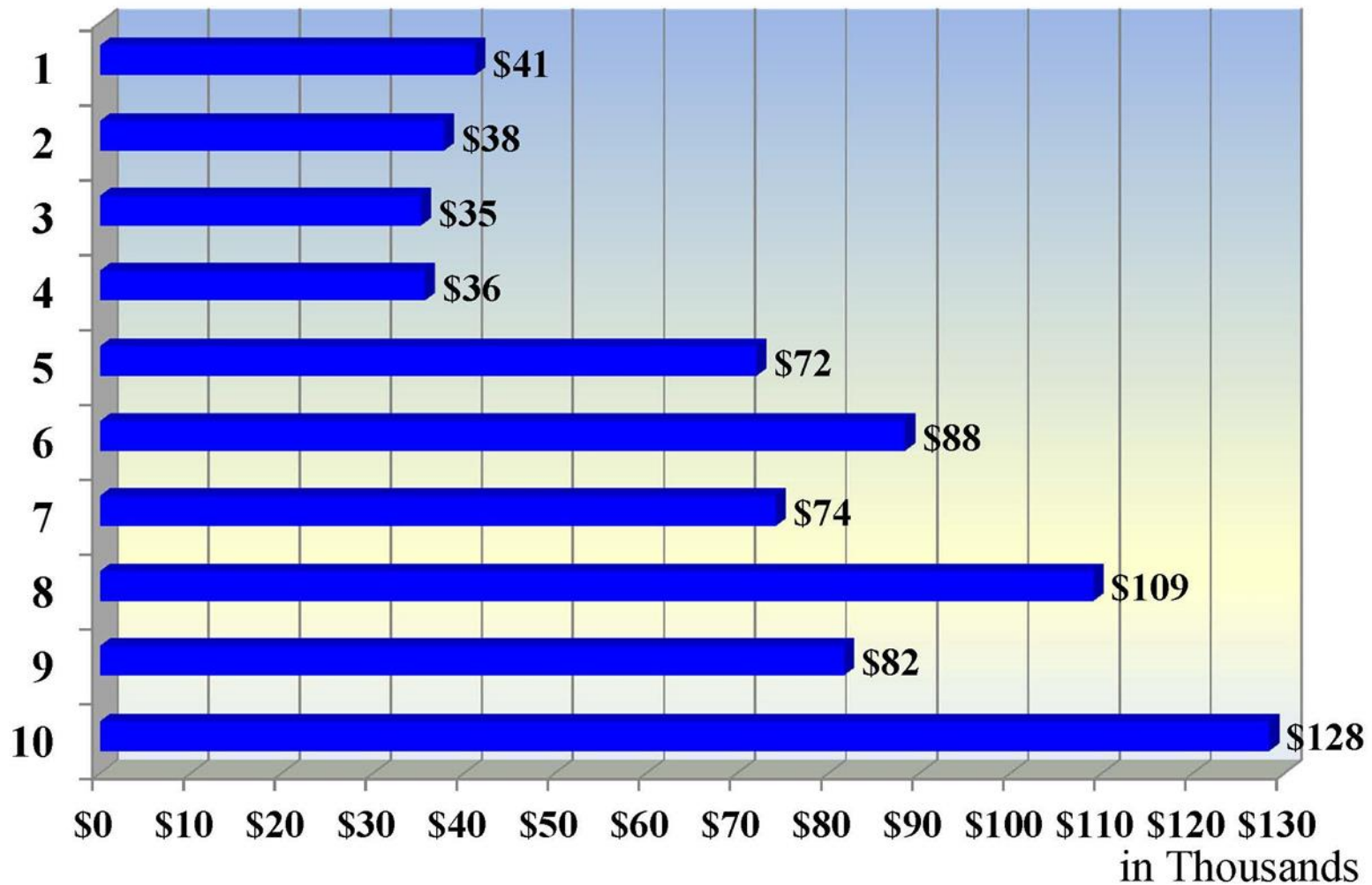




# Health & Human Services

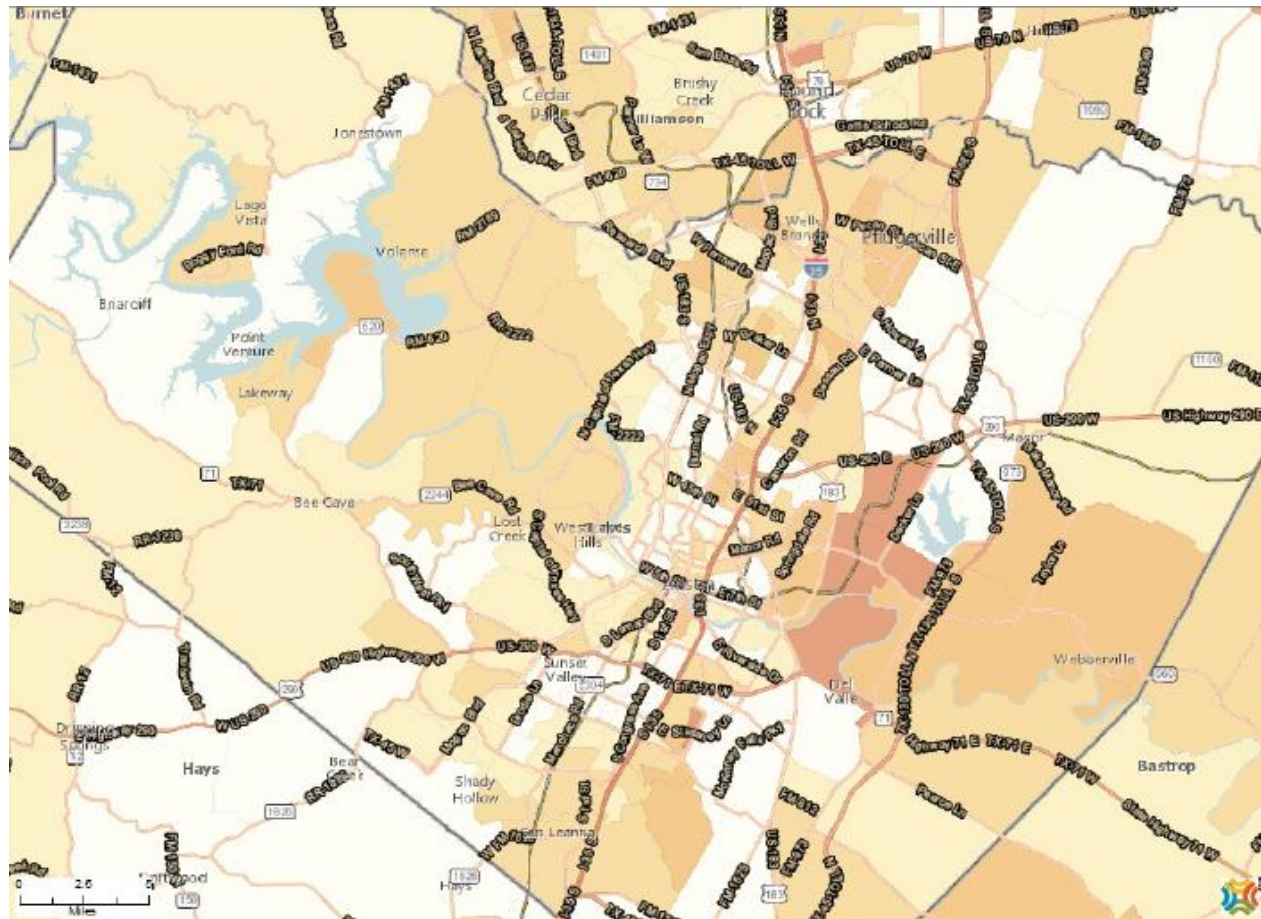
*Eliminating Health Disparities and Improving Social Determinants*

## Median Family Income by Council District

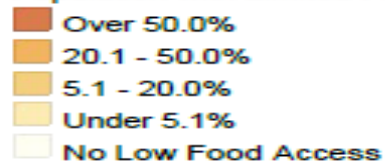


# Health and Human Services

## Travis County Low Income Population with Limited Food Access



Population with Limited Food Access, Low Income, Percent by Tract, FARA 2010



Source: Community Commons, April 2015



# Health & Human Services

## *Social Determinants Direct Services*

### ➤ **Food Assistance**

- WIC Clinics
- Neighborhood Centers
  - Emergency food pantry
  - Fresh Food For Families distribution
  - Healthy Options for Elderly
- SNAP enrollment outreach

### ➤ **Case Management Services**

Self Sufficiency -Transitioned 54 households out of poverty

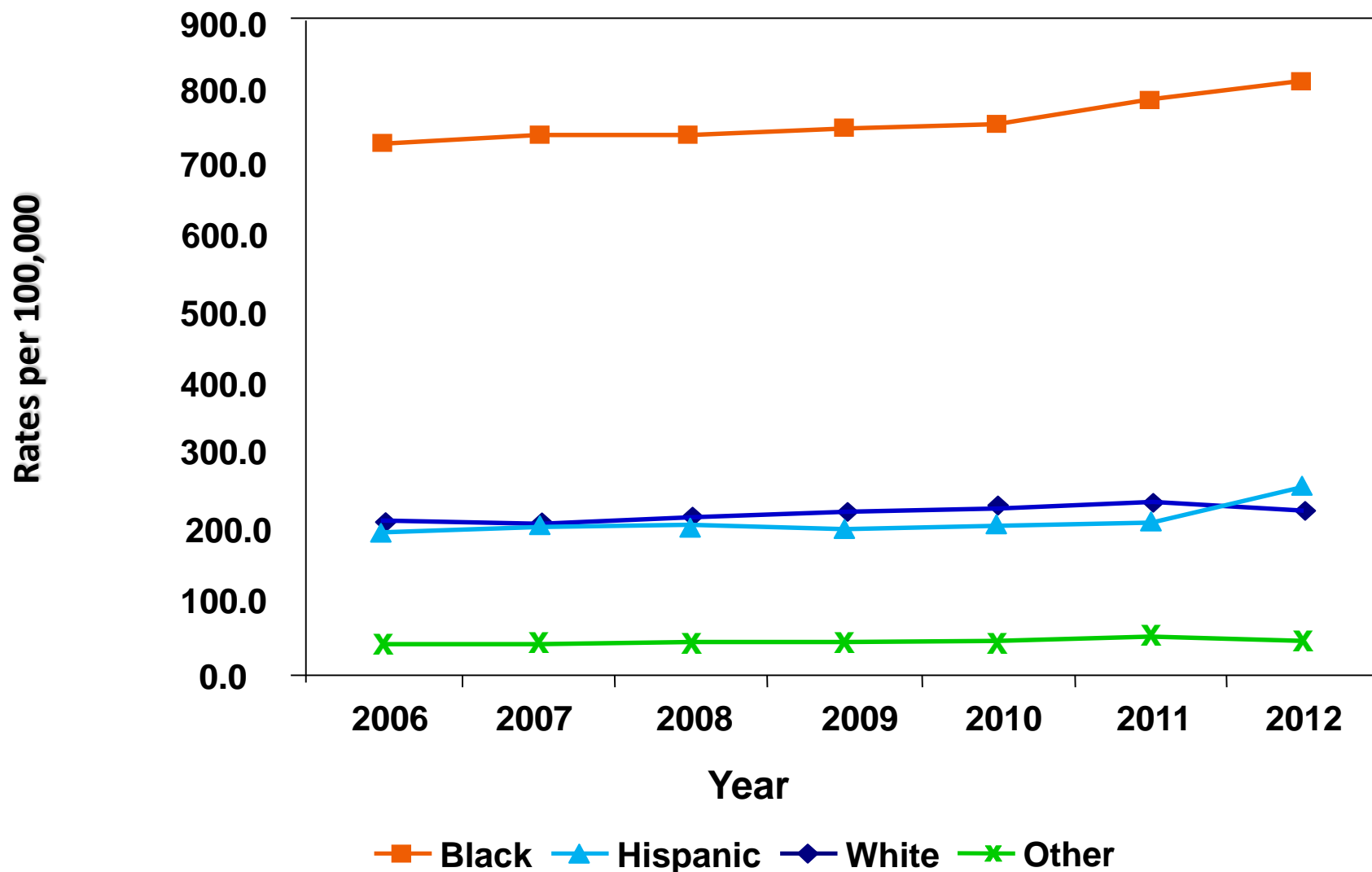
- Employment support
- Housing assistance
- Crisis Intervention

### ➤ **Youth Development**

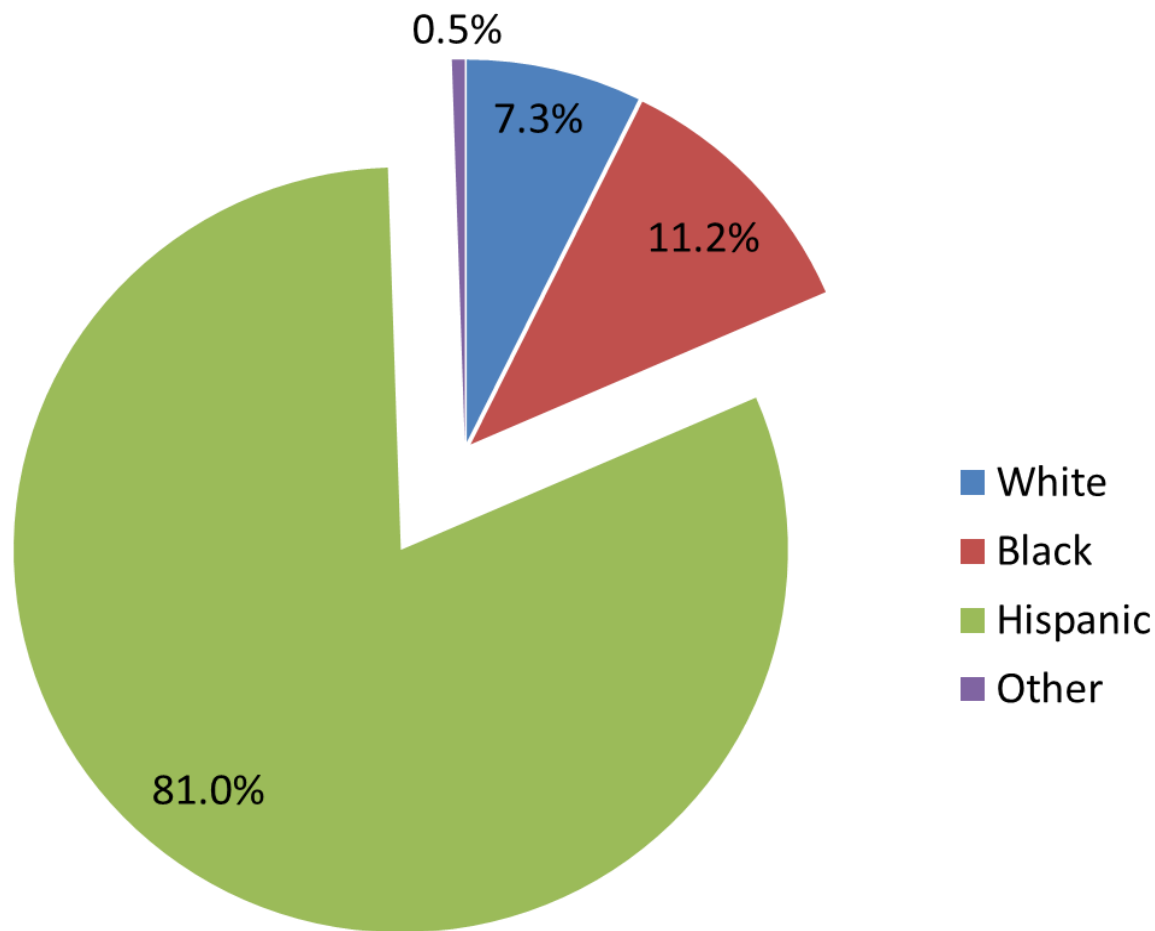
- - Employment readiness and job skills training
- - Educational Attainment

# Health & Human Services

*Prevalence Rates for Persons Living with HIV/AIDS by Race/Ethnicity, Austin Transitional Grant Area, 2006 - 2012*



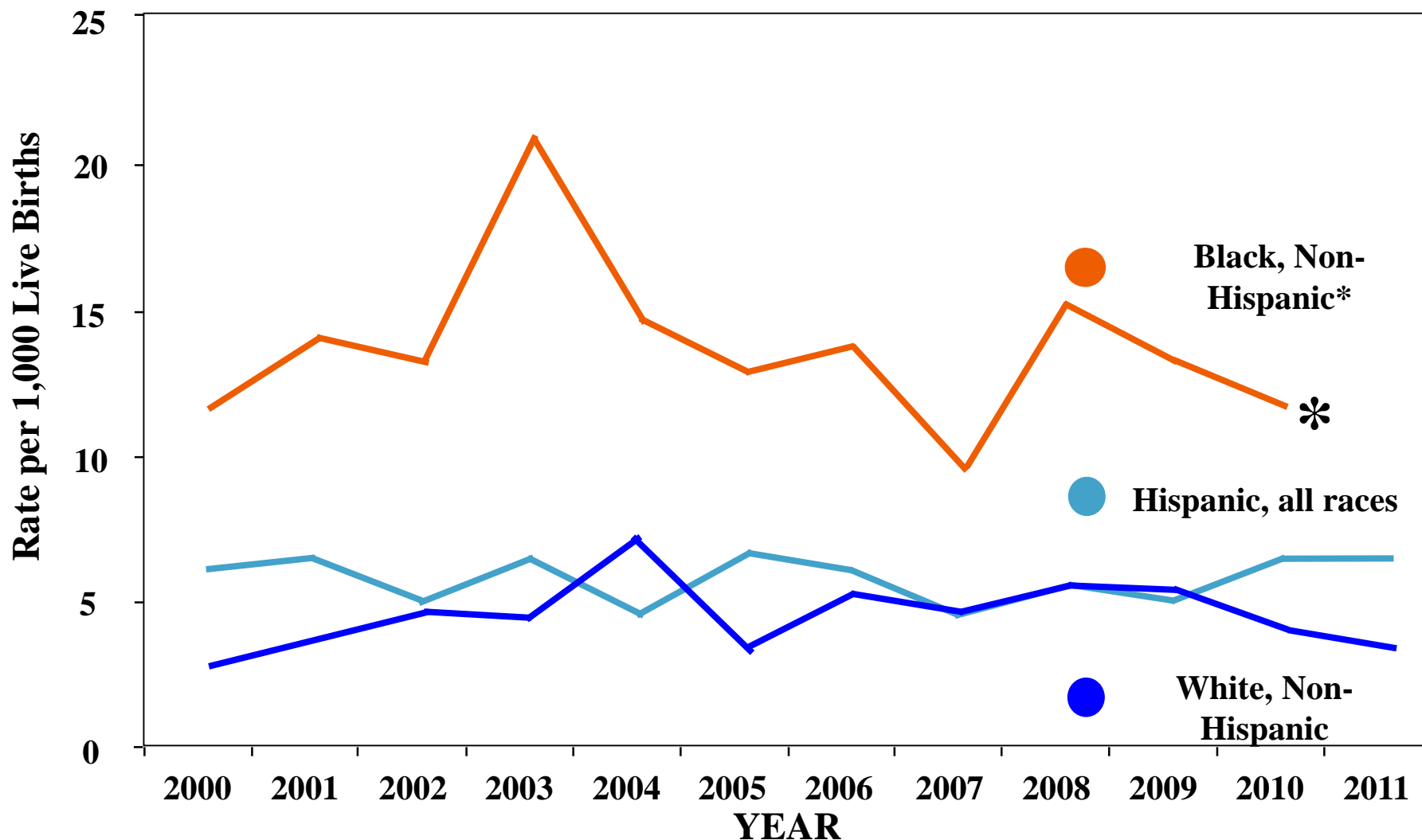
## Teen Births: Mother's Age 15-17 Travis County, 2009-2012



Health & Human Services			
Teen Births, Travis County 2013			
Teen Births by Race/Ethnicity, Travis County, 2013 Source: Texas Department of State Health Services			
Race/Ethnicity	Mother's Age		
	14 & Under	15-17	18-19
White, Non-Hispanic	1	20	65
Black, Non-Hispanic	1	27	78
Hispanic	14	265	512
Other/ Multi-Racial	3	8	16
All Races	19	320	733

# Health & Human Services

*Infant Mortality Rates by Race / Ethnicity for Travis County, 2000 - 2011*



**\* Due to low number of infant deaths, rates were not calculated for 2011**

# Health & Human Services

## *Health Disparities Direct Services*

### ➤ **Family Health**

- Peer to Peer Adolescent Health Education
- Comprehensive Sexual Health Education
- Teen Pregnancy Intervention

### ➤ **HIV/STD outreach, testing, and clinic**

- HIV treatment is essential to help reduce the viral load and reduce the potential for the spread of disease.
- Medical Case Management ensures that individuals with HIV get treatment

### ➤ **Maternal Infant Outreach Programs to Achieve Healthy Term Births**

- Family Planning Education and Counseling
- Community Health Worker Group Support to Improve Access to Prenatal Care

### ➤ **Public Health Nursing**

- Chronic Disease (Blood Pressure, Blood Sugar) Screenings
- Referrals

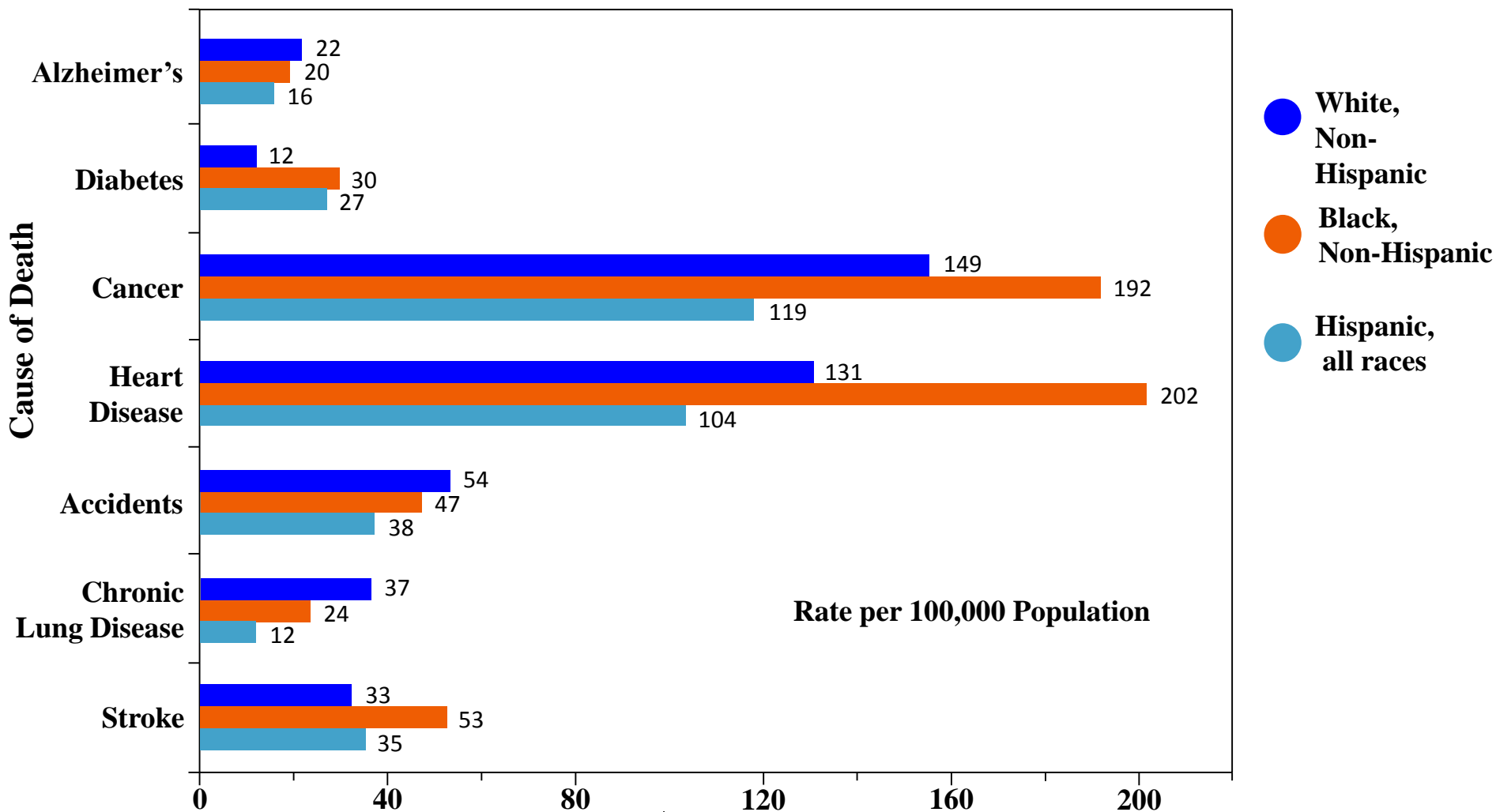
### ➤ **Quality of Life Mobile Van Screenings**

- HHSD Capacity only 1 nurse to cover all of Travis County



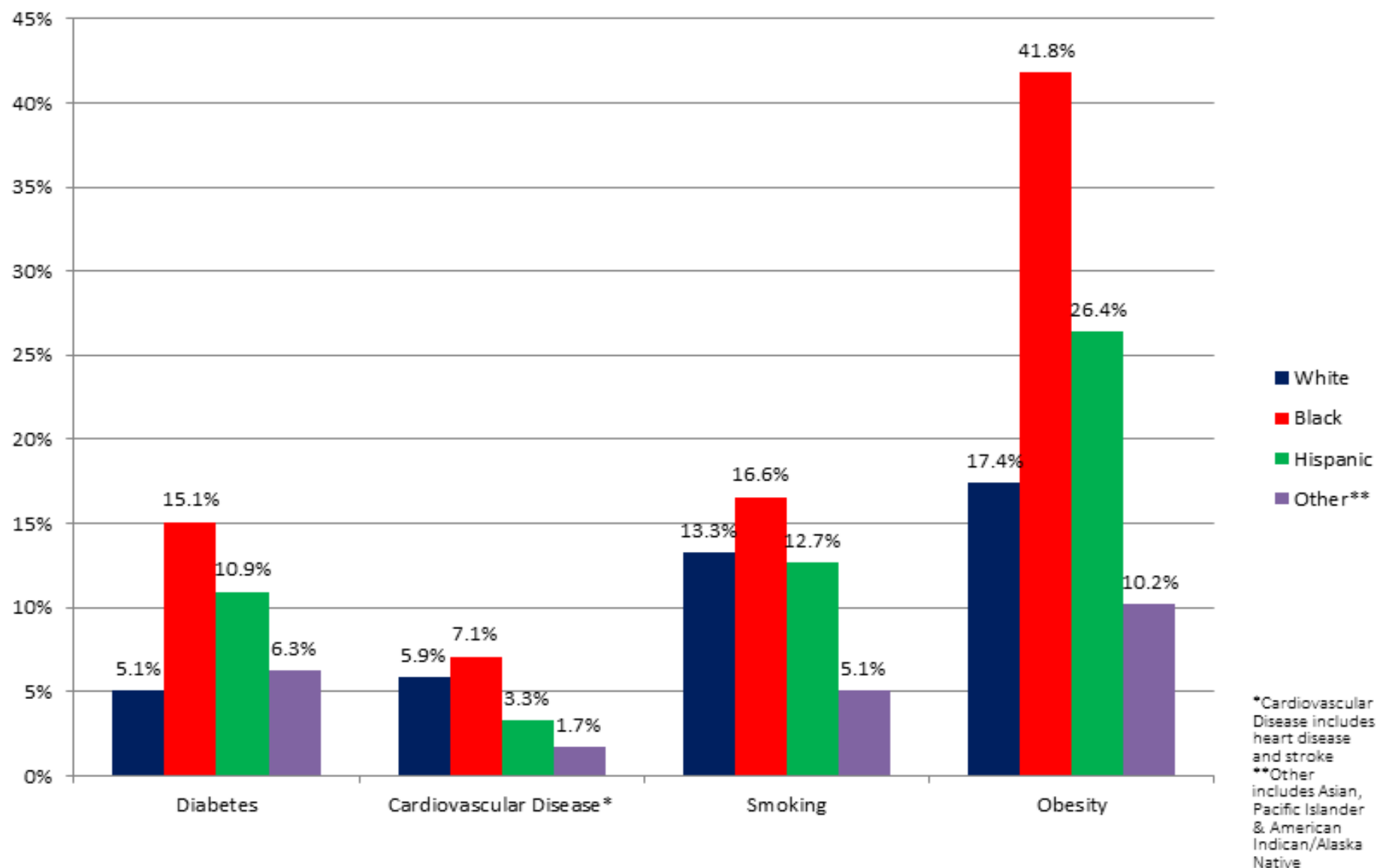
# Health & Human Services

## *Age-Adjusted Mortality Rates for Seven Leading Causes of Death by Race/Ethnicity, Travis County 2011 - 2013*



# Health & Human Services

Chronic Disease & Tobacco Use Prevalence by Race/Ethnicity  
Travis County, 2011-2014



# Health & Human Services

## *Local Findings from Asian American Assessment: Chronic Disease*

- The Asian American Resource Center (Non Profit local) Asian American Health Assessment conducted surveys and focus groups among sub populations:
  - Taiwanese
  - Chinese
  - Vietnamese
  - Korean
  - South Asian
  - Refugees
  - Seniors
  
- These 116 respondents prioritized the following health topics:
  - Diabetes
  - Hypertension
  - Mental Health
  - Cancer
  - Arthritis

# Health & Human Services and Social Services

## *Chronic Disease Epidemic Among People of Color*

- **Chronic disease conditions account for three out of every four deaths in Austin.**
- **Heart disease is the leading cause of death among African Americans and Hispanics.**
- **Over 230,000 Travis County adults are considered clinically obese or overweight**
- **Diabetes is the seventh leading cause of death in Travis County overall, the fourth leading cause for African Americans and the fifth leading for Hispanics.**
- **In 2012, Travis County chronic disease hospitalization costs totaled over \$571 million.**
- **Chronic Disease Prevention and Control has been identified as a top priority in the Community Health Improvement Plan and Imagine Austin Comprehensive Plan**

# Health & Human Services

## *Chronic Disease Epidemic Among People of Color* *Services We Offer*

- **Free diabetes education classes targeting Medicare/Medicaid and medically indigent population and populations of color**
  - Reaching 150 individuals with diabetes per year
- **Free tobacco cessation**
  - Outreach targeting the 18-24 year old population
- **Nutrition Counseling through WIC Clinic**
- **Free Community Exercise Programs**
  - Two health educators to provide year round exercise classes
- **Public Health Nursing**
  - Chronic Disease (Blood Pressure, Blood Sugar) Screenings
  - Referrals
- **Quality of Life Mobile Van Chronic Disease Screening, Education and Outreach targeting people of color (African Americans, Asians, and Hispanics)**
  - One mobile van with one nurse to provide outreach throughout Travis County reaching 3,427 individuals per year.
  - Health Education



*Public Health  
Emergency Preparedness*



# Health & Human Services

## *Public Health Emergency Preparedness*

- Public health emergency response planning to effectively respond to a range of public health threats including:
  - Infectious Diseases (Ebola, Zika, H1N1) Ongoing Disease Surveillance to Mitigate Outbreaks
  - Natural Disasters
    - Halloween Floods, Wildfires, Extreme Weather: Heat and Cold, Hurricane Response
      - Disease Surveillance, food safety, and other health and safety guidance
      - Sheltering: Managing people with medical, functional and basic needs
  - Biological, Chemical, Nuclear, and Radiological
    - HHSD supports public safety response by monitoring for biologic hazards assessing exposure risk, transport of highly pathogenic agents to labs, and ensuring first responder safety and health.
- Federal and state budget cuts continue to threaten more than a decade of progress
  - Since 2004, funding to support public health response has decreased from \$1.3M to \$682K with a loss of 14.25 FTEs over that time period

# Questions/Comments/Discussion

For more information, please contact:

Stephanie Hayden, Deputy Director

512-972-5017

[Stephanie.Hayden@austintexas.gov](mailto:Stephanie.Hayden@austintexas.gov)