

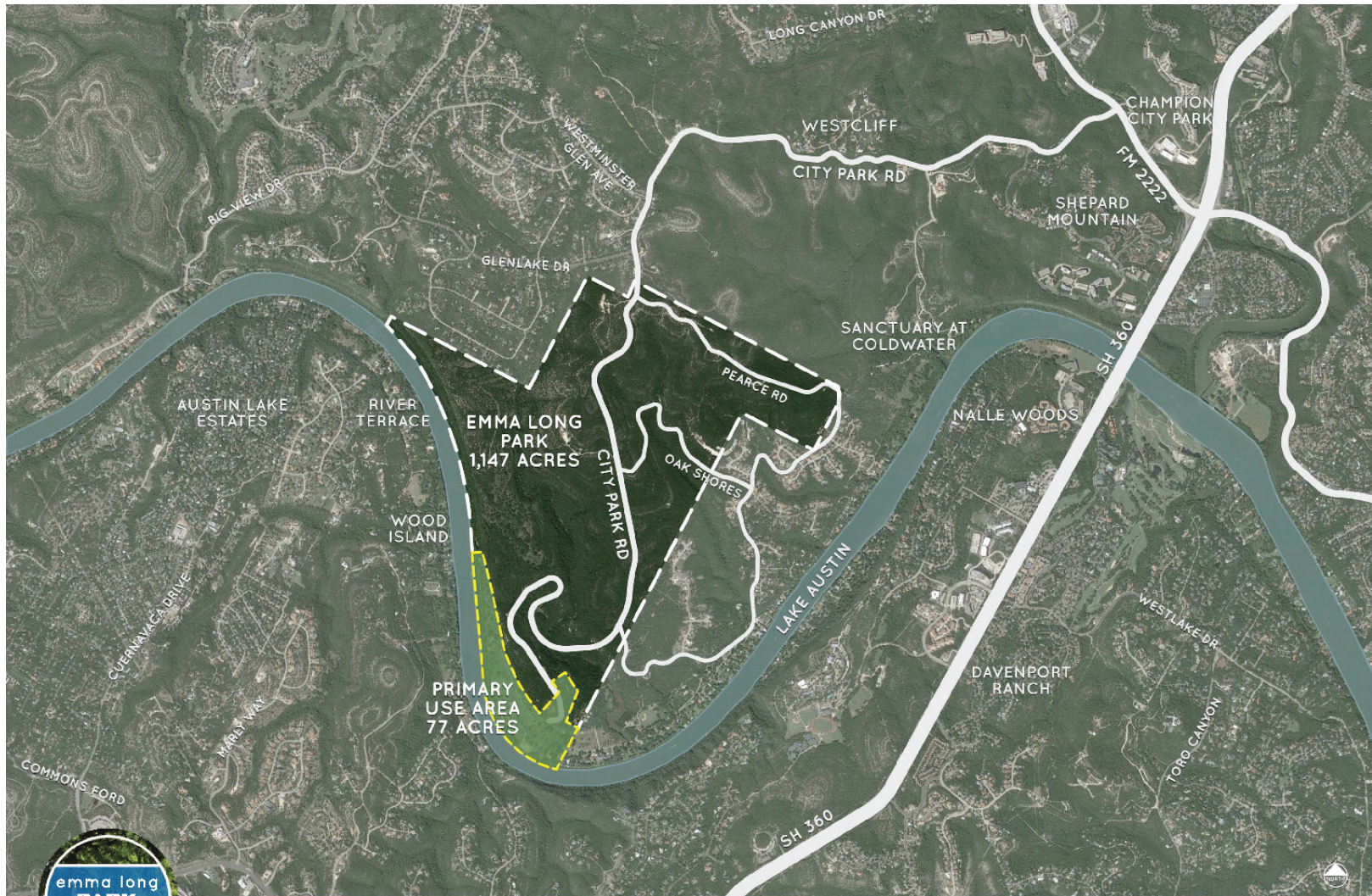
Emma Long Metro Park Vision Plan

Outreach and Planning Phase
November 2015-November 2016



PARB Land, Facilities and Programs Committee
01/09/2017





Overall Park Aerial

November 2015





Primary Use Area

November 2015



Functional Zones within the Park

- Boat Ramp and Water Access
- Central Lawn, Swimming & Day Use Area
- Secondary Lawn and Passive Shoreline
- Circulation and Camping Areas

Goals and Actions

- Infrastructural – what facilitates park use?
- Operational – what makes the park function?
- Recreational – how does one spend time in the park?
- Natural – what sustains the land from overuse?



Community Input & Outreach

- 11/14/2015 – Public Meeting #1
 - Kickoff & information gathering, issue survey
- 11/17/2015 – Focus Group Mtg. #1
 - Friends of Emma Long Motorcycle Park
- 1/11/2016 – Focus Group Mtg. #2
 - Neighbors and interested park users
- 3/19/2016 & 03/26/2016 – On-site intercept surveys
- 04/05/2016 – Public Meeting #2
 - Review survey results and draft responses
- 07/16/2016 – Public Meeting #3
 - Review proposed plans & final input sessions



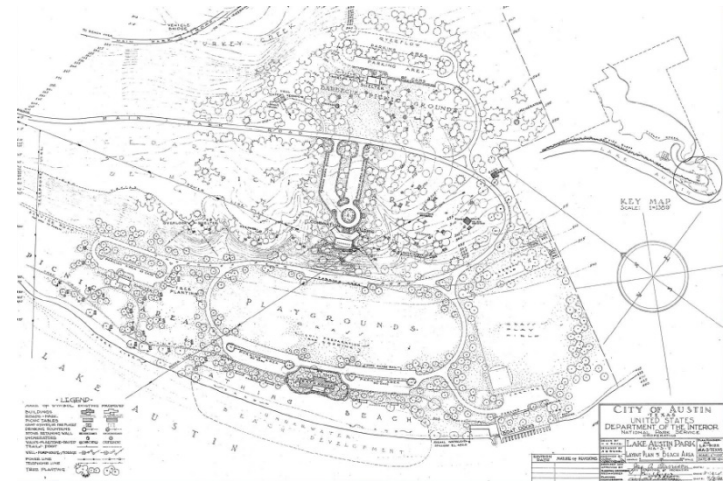
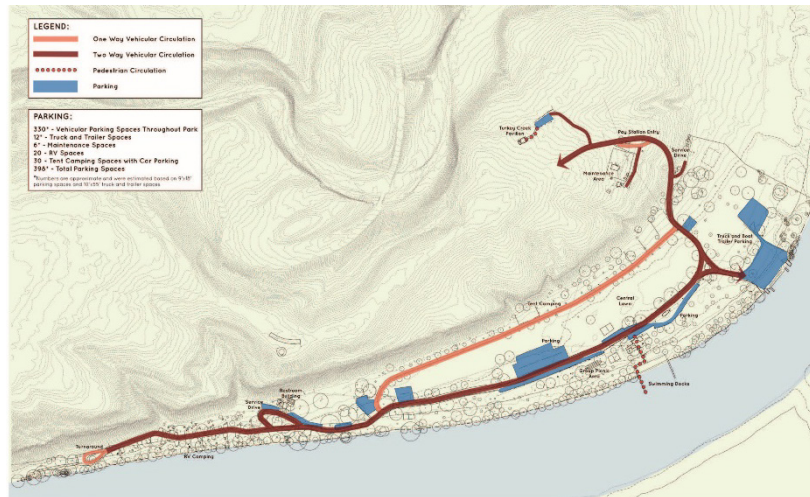
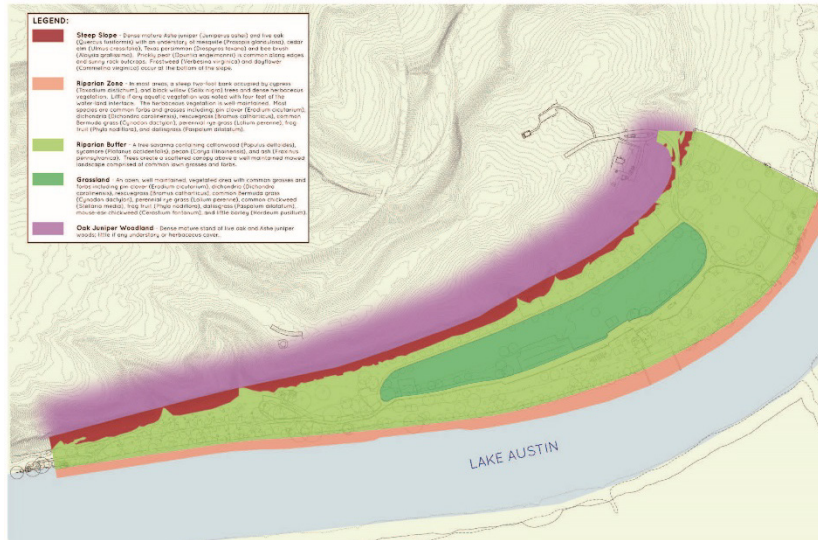
Survey Feedback

- Are there issues or problems preventing you from using Emma Long Park? (select all that apply)
 1. Park is overcrowded (52.4%)
 2. Lack of parking (27.0%)
 3. Facilities are not well-maintained (27.0%)

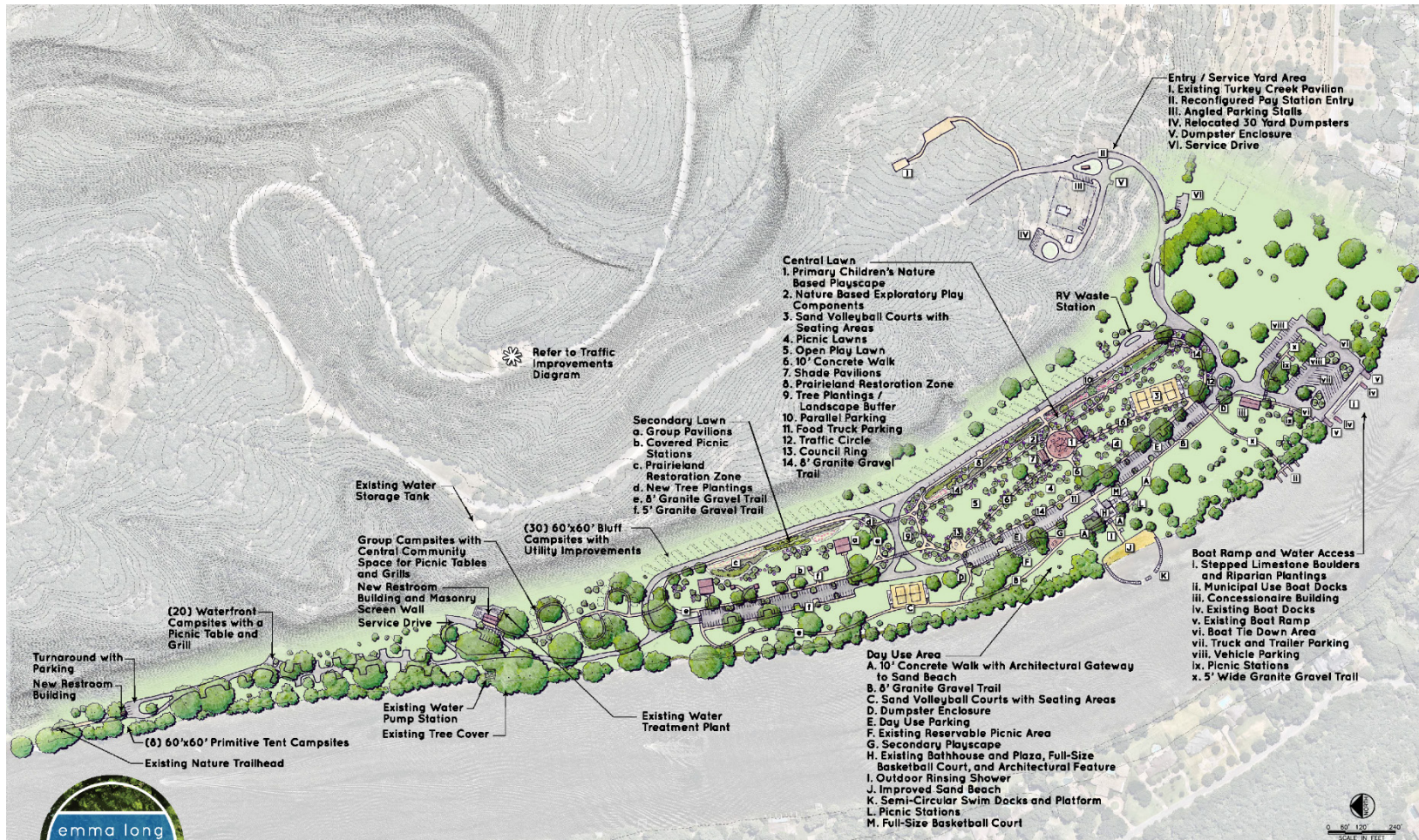
- What do you believe are the most important goals for Emma Long Park? (select top 3 choices)
 1. Improved infrastructure (50.7%)
 2. Provide family and group oriented amenities (40%)
 3. Improve parking and access (38.7%)



Park site and systems analysis



Proposed Vision



Park Vision Plan

FREESE NICHOLS



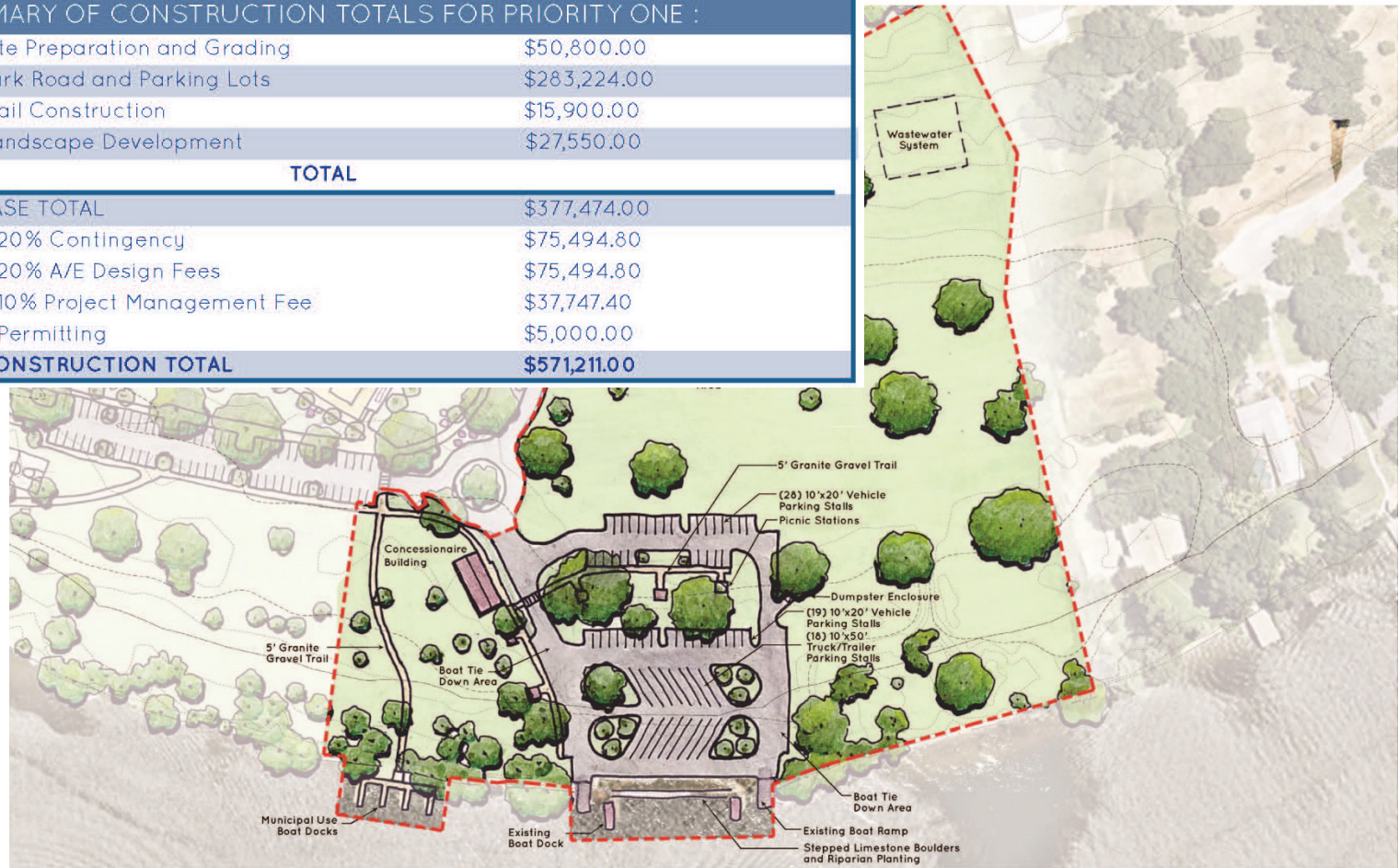
Implementation

SUMMARY OF CONSTRUCTION TOTALS FOR PRIORITY ONE :

Site Preparation and Grading	\$50,800.00
Park Road and Parking Lots	\$283,224.00
Trail Construction	\$15,900.00
Landscape Development	\$27,550.00

TOTAL

BASE TOTAL	\$377,474.00
+ 20% Contingency	\$75,494.80
+ 20% A/E Design Fees	\$75,494.80
+ 10% Project Management Fee	\$37,747.40
+ Permitting	\$5,000.00
CONSTRUCTION TOTAL	\$571,211.00



Next Steps

- Recommendation from Parks and Recreation Board for director's approval of Vision Plan
- Begin design phase for infrastructural, operational and recreational priorities
 - ❑ Utility upgrades to existing camp areas
 - ❑ Improved roadway at entry station and along bluff
 - ❑ Parking and access improvements at boat launch
 - ❑ Trail improvements around Central Lawn
- Project website: <https://austintexas.gov/emmalongvision>

