



Project Connect

New Transit Solutions for a Greater Austin

*City of Austin Pedestrian Advisory Council
Project Briefing*

February 6, 2017



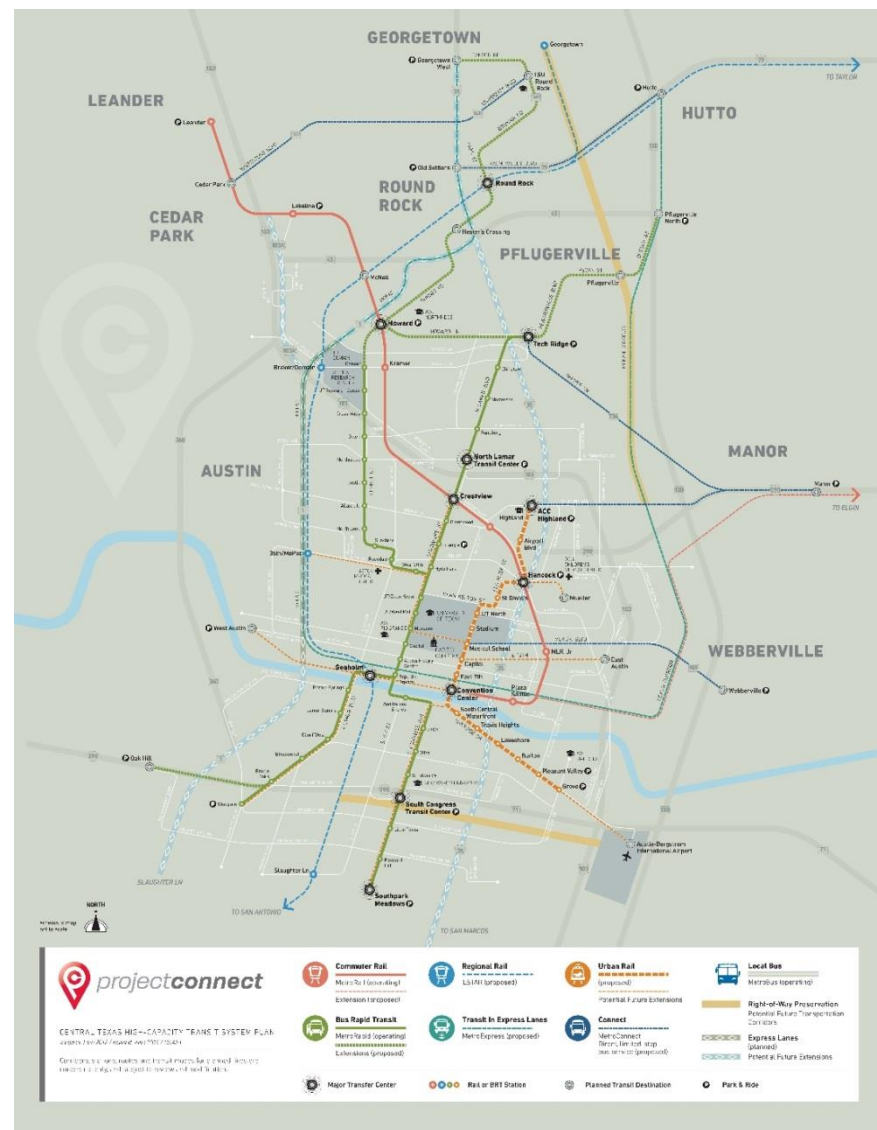


Project Overview



What is Project Connect?

- Central TX regionally adopted High-Capacity Transit Plan (2012)
 - Transit Working Group
 - City of Austin
 - CMTA –City of Round Rock
 - Bastrop County
 - Travis County
 - Hays County
 - Texas Facility Commission
 - RECA
 - SETON Family of Hospitals
 - Chamber of Commerce
 - University of Texas
 - Downtown Austin Alliance

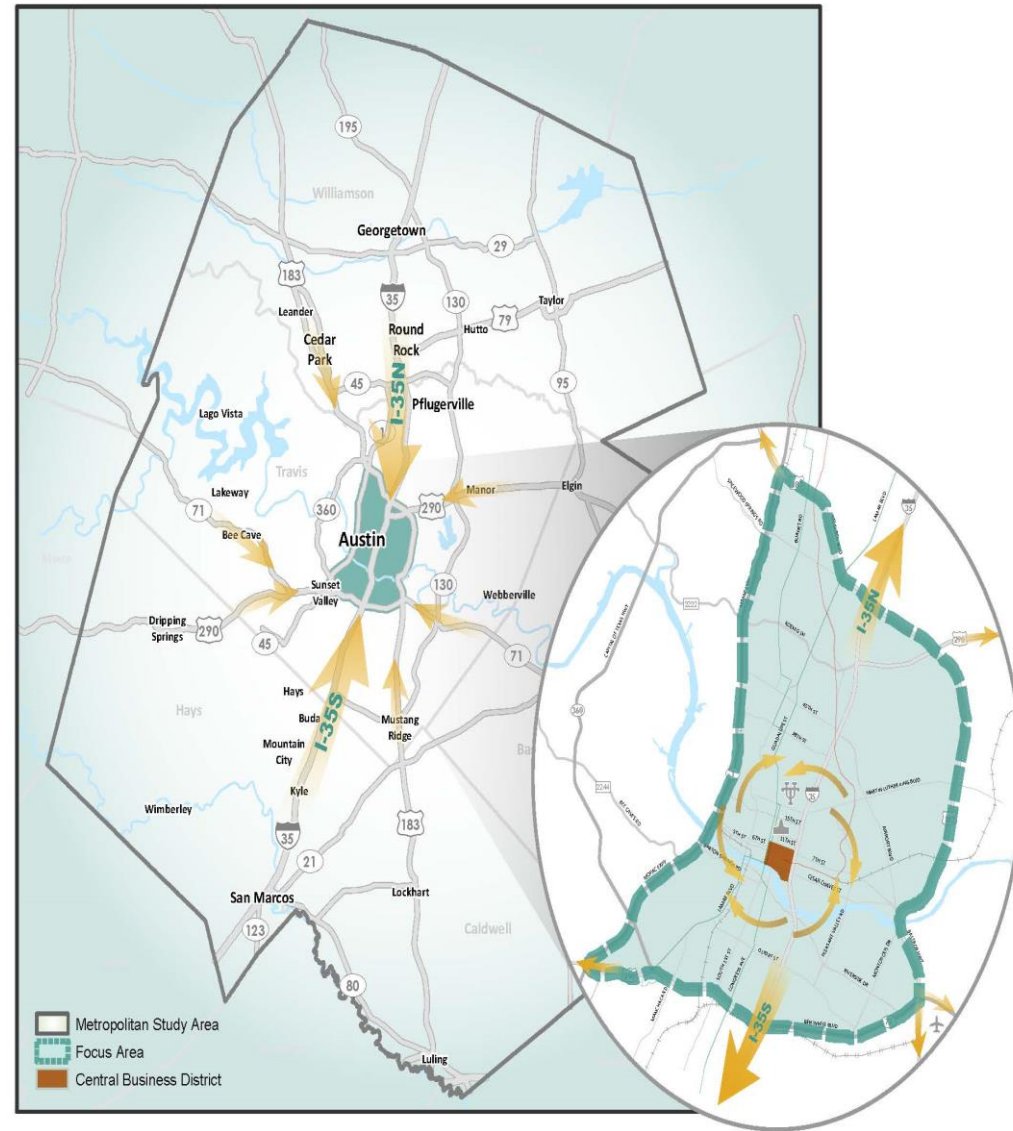


What are We Doing?

- Refine Project Connect Plan

Why?

- Select new transit solutions for access into, out of, & within central Austin



What is High-Capacity Transit?

Transit that includes these features:

- Dedicated right-of-way or transit priority lanes (esp. during peak hours)
- High frequency (<15 min, or better) and extended service hours
- Significant, branded stations and amenities



Kansas City's Modern Streetcar



Cleveland's HealthLine BRT



Minneapolis' BRT on I-35 W

Phased Approach to Project Development

Phase 1 Big Ideas, Bold Starts

(Mar '16 – Mar '17)

- **SELECTION**
- Tier 1 **Feasibility Analysis**
- Where are high-capacity enhancements / new services needed?
- Which projects are most critical / make the most sense?

Phase 2 Real Solutions for Real Problems

(Apr '17 – Apr '18)

- **DETAIL ANALYSIS**
- Tier 2 **Technical Evaluation**
- What is the best system of solutions?
- What is the most effective strategy for implementation?

Phase 3 Path to Implementation

(May '18 – Oct '18)

- **PROJECT DEVELOPMENT**
- Locally Preferred Alternative (**LPA**) **Selection**
- Advanced planning / PE / NEPA (if necessary)
- FTA Project Development Application -- local funding and policy adoption

Public Involvement



Purpose & Need, Goals & Objectives

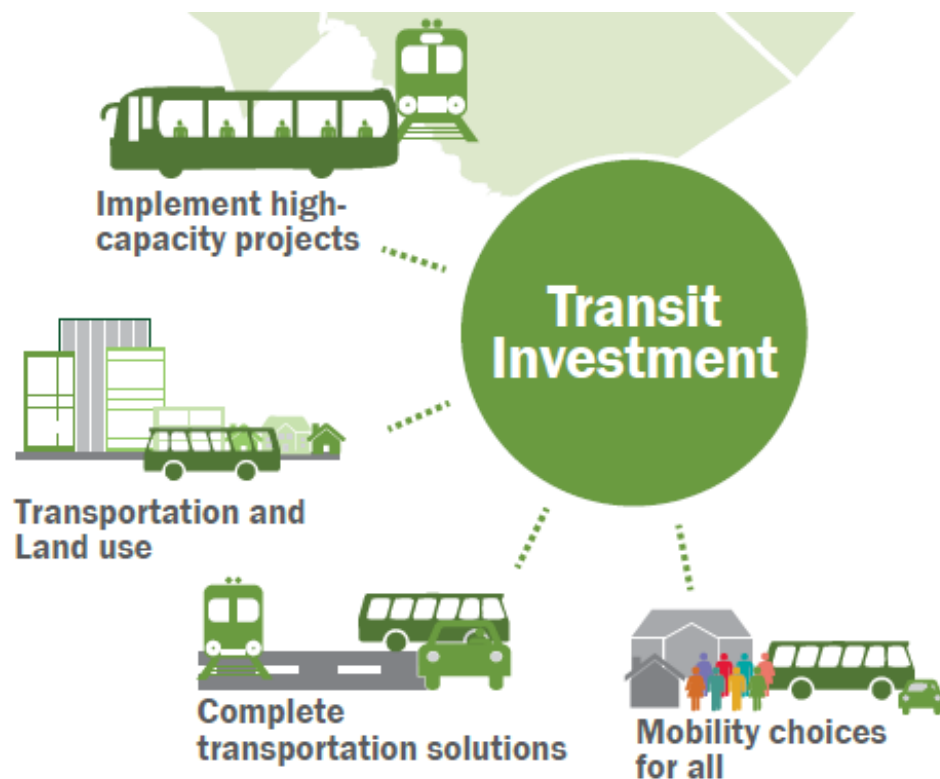


Draft Purpose & Needs

The **Purpose** of Project Connect is to improve existing high-capacity transit and develop new high-capacity transit that provide efficient travel options to, from, and within Central Austin from the surrounding region.

The **Needs (Problems)** to be addressed by Project Connect:

- Explosive growth
- Limited ability to build more roads
- Issues of affordability / cost of living
- Implement a regional transit system



Project Connect Goals

Draft Goals:

- **Improve Customer Experience**
- **Improve Reliability**
- **Promote Sustainability**
- **Incorporate Land Use & Policy Tools to Support High-Capacity Transit**
- **Develop Solutions for Implementation & Continued Operations**



Train / Articulated Transit Vehicle



Dedicated Right-of-Way



Moderate - Wide Stop Spacing

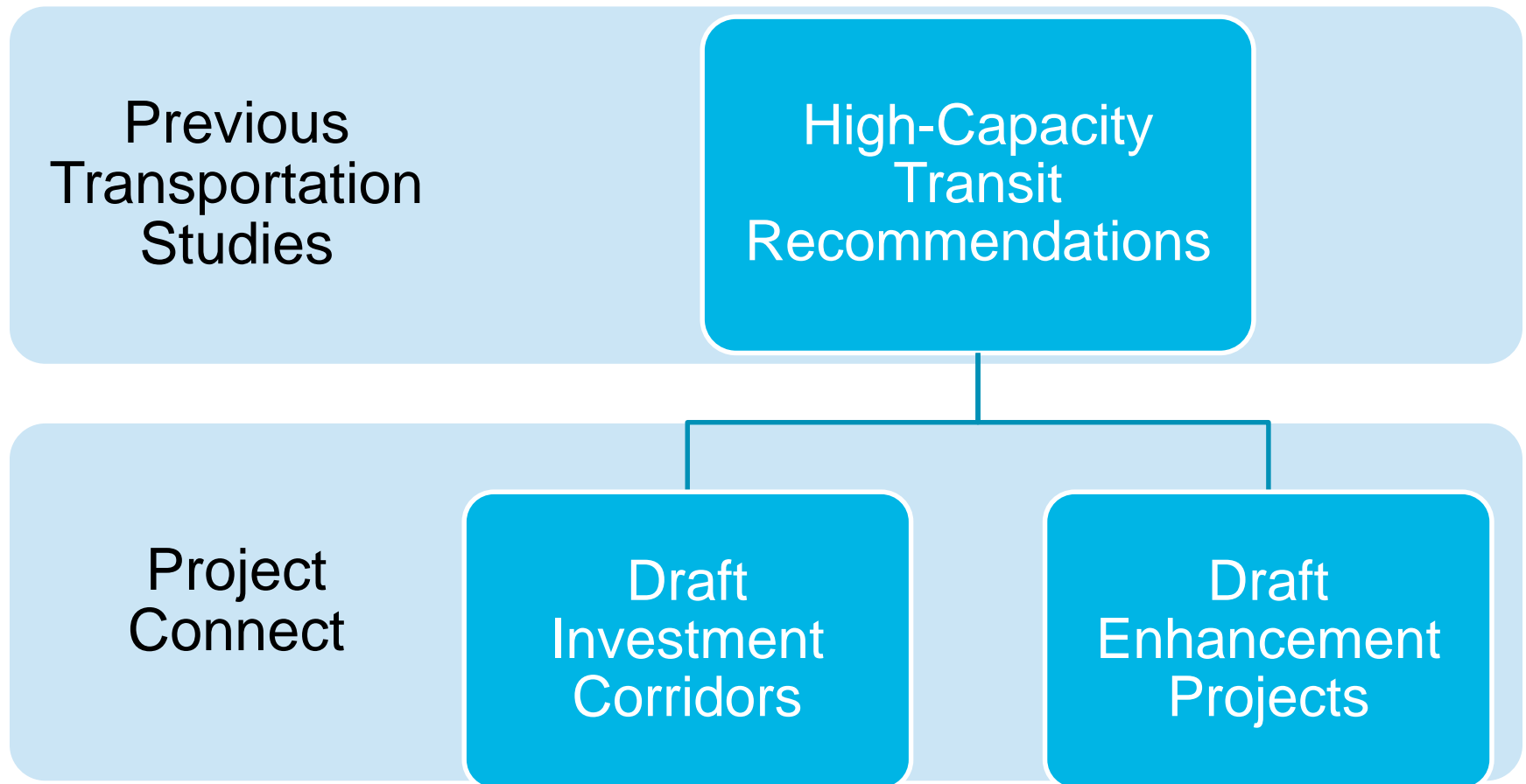




High-Capacity Transit Investment Corridors & Enhancement Projects



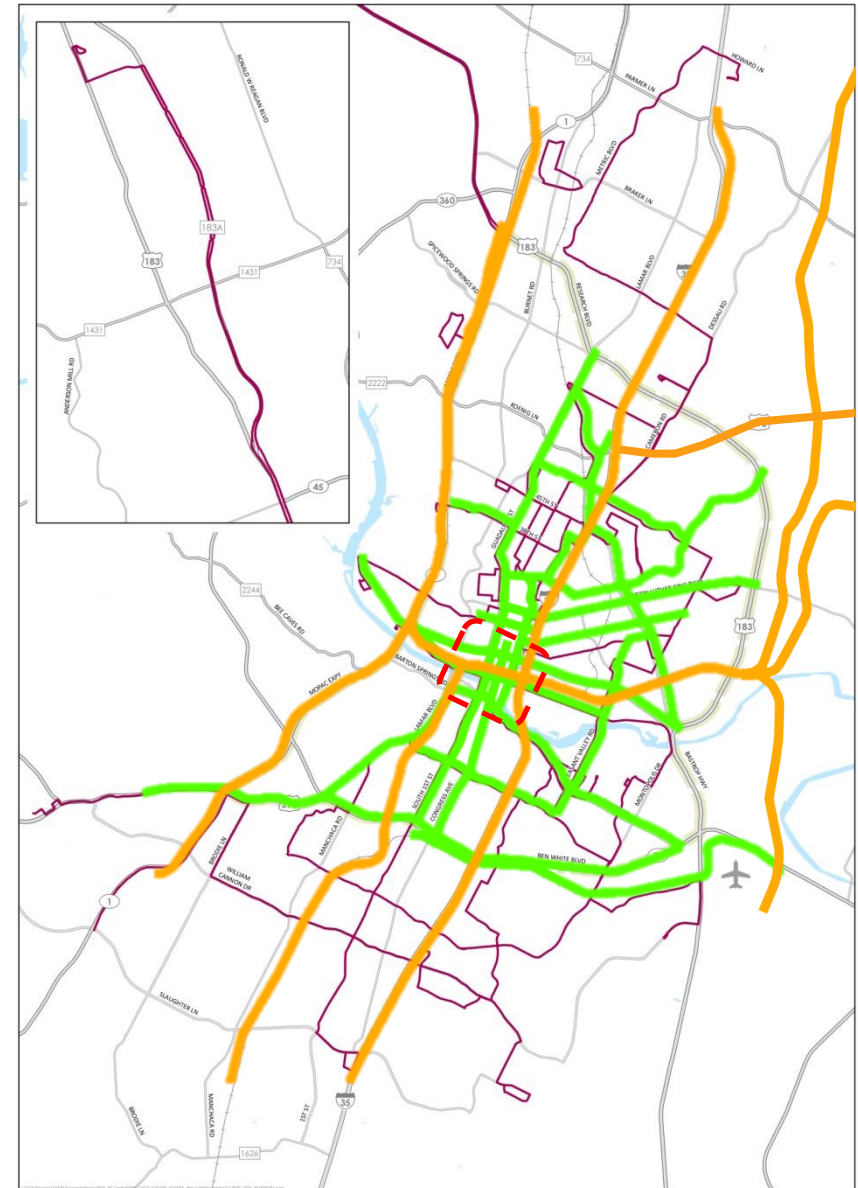
Review of Local Planning Efforts



Draft Investment Corridors

What is an Investment Corridor?

- Roadway or railroad corridor that can support high-capacity transit
- May require alternative and/or Federal funding
- **Purpose:** Identify corridors studied for high-capacity transit under previous local planning efforts
 - **Commuter Corridors**
 - **Connector Corridors**
 - **Circulator Corridors**



Draft Enhancement Projects

What is an Enhancement Project?

- Short implementation period
- Has potential to be locally funded

Purpose: improve existing high-capacity transit.

- MetroRail
- MetroRapid
- MetroExpress



MetroRail

- Station upgrades, passing sidings, & park & ride spaces



MetroRapid

- Station upgrades, transit priority lanes, signal & intersection improvements



MetroExpress

- Managed lane access, park & ride spaces, & transit priority lanes

What will be the outcome of Project Connect?

Investment Corridors

Potential routes for new high-capacity transit services

- Commuters



Commuter

- Connectors



Connector

- Circulators



Circulator

Enhancement Projects

Improve existing services

- MetroRail



MetroRail

- MetroRapid



MetroRapid

- MetroExpress



MetroExpress

- Mobility Hubs



Mobility Hub



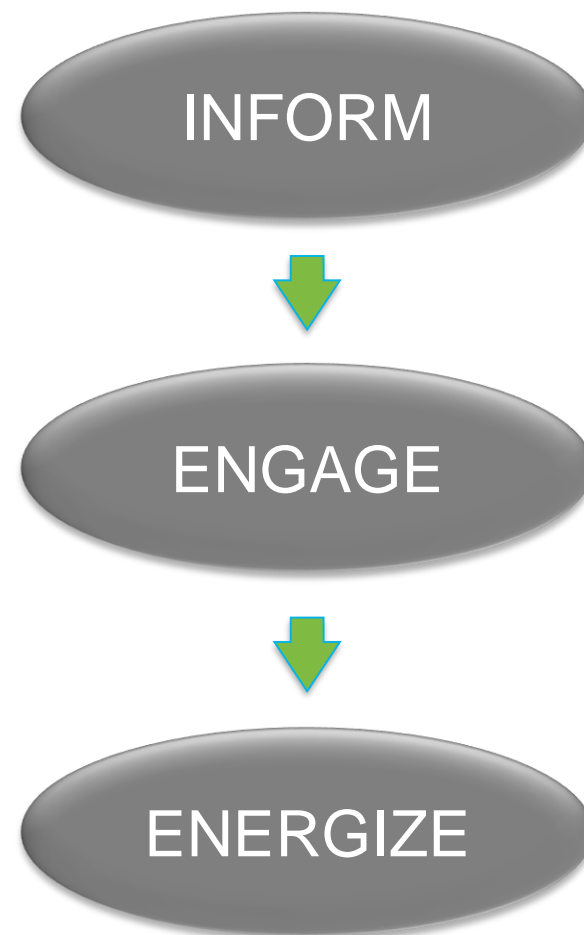
Public Involvement



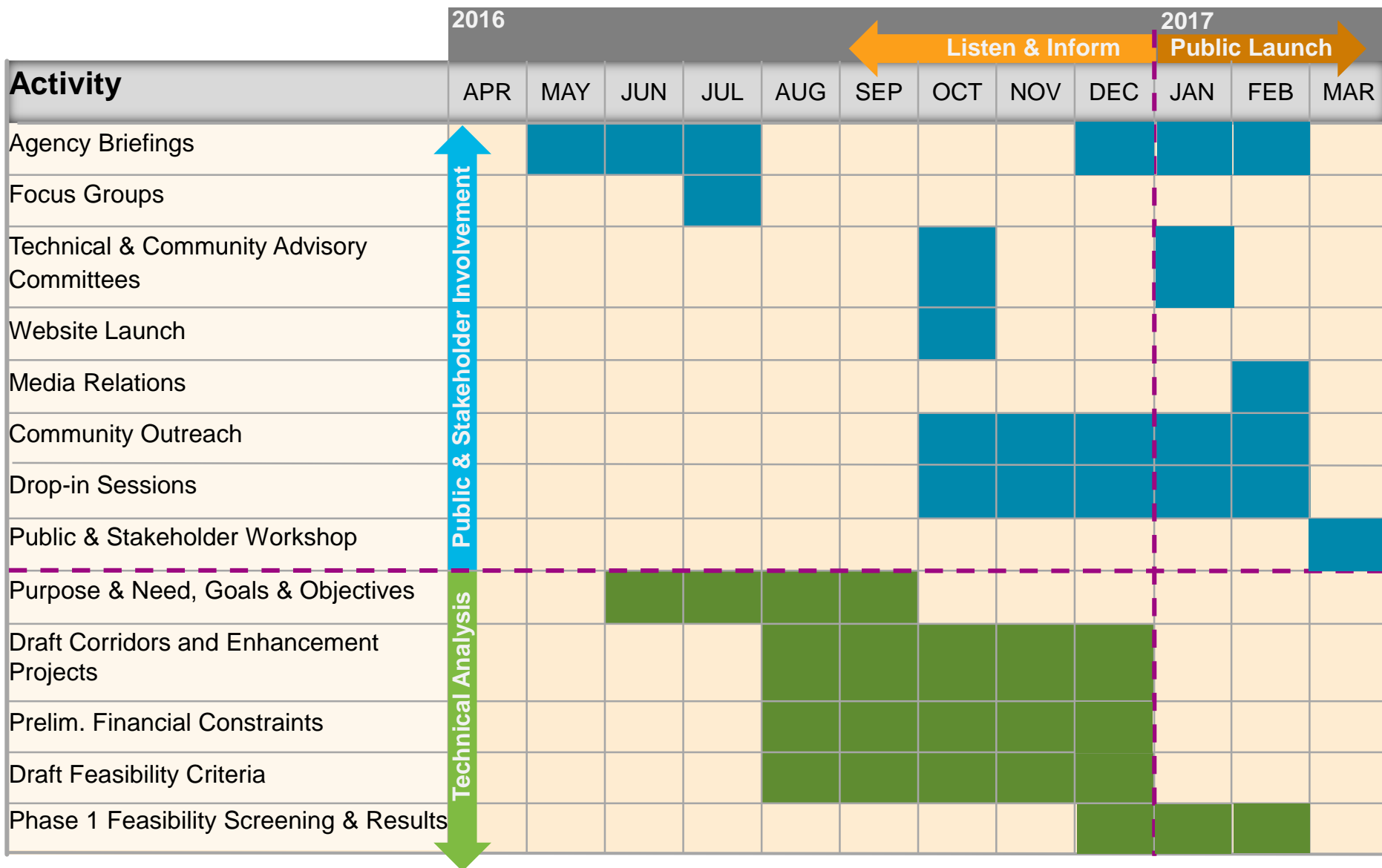
Public and Stakeholder Involvement Plan (PSIP)

Overview

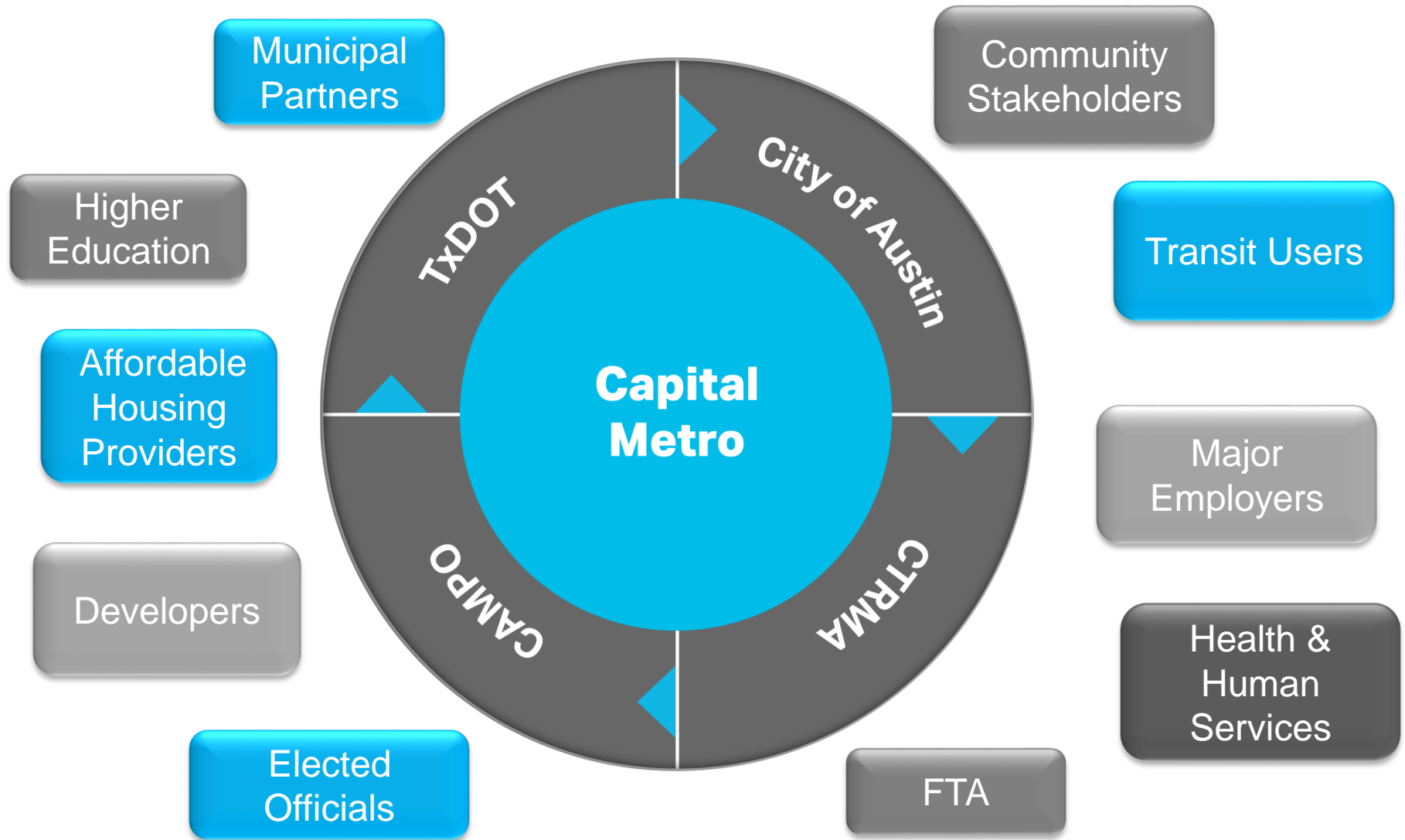
- Identify the overall public and stakeholder involvement approach, consistent with best practices
 - **Inform** community on issues & benefits of transit
 - **Engage** public, stakeholders & media to provide input along the way
 - **Energize** support for buildable projects



Phase 1 Milestone Schedule



Building Partnerships for Transit Solutions





Coordinated Transportation Initiatives



Integrating Project Connect

Agency

Capital Metro

City of Austin

Regional Partners



Connections 2025

Project Connect

City of Austin ASMP

2016 Mobility Bond

Travis County Transportation Plan

TxDOT Mobility 35

CTRMA
Mobility Projects

CodeNEXT

CAMPO 2045 Plan

Vision Zero /
Sidewalk Master Plan

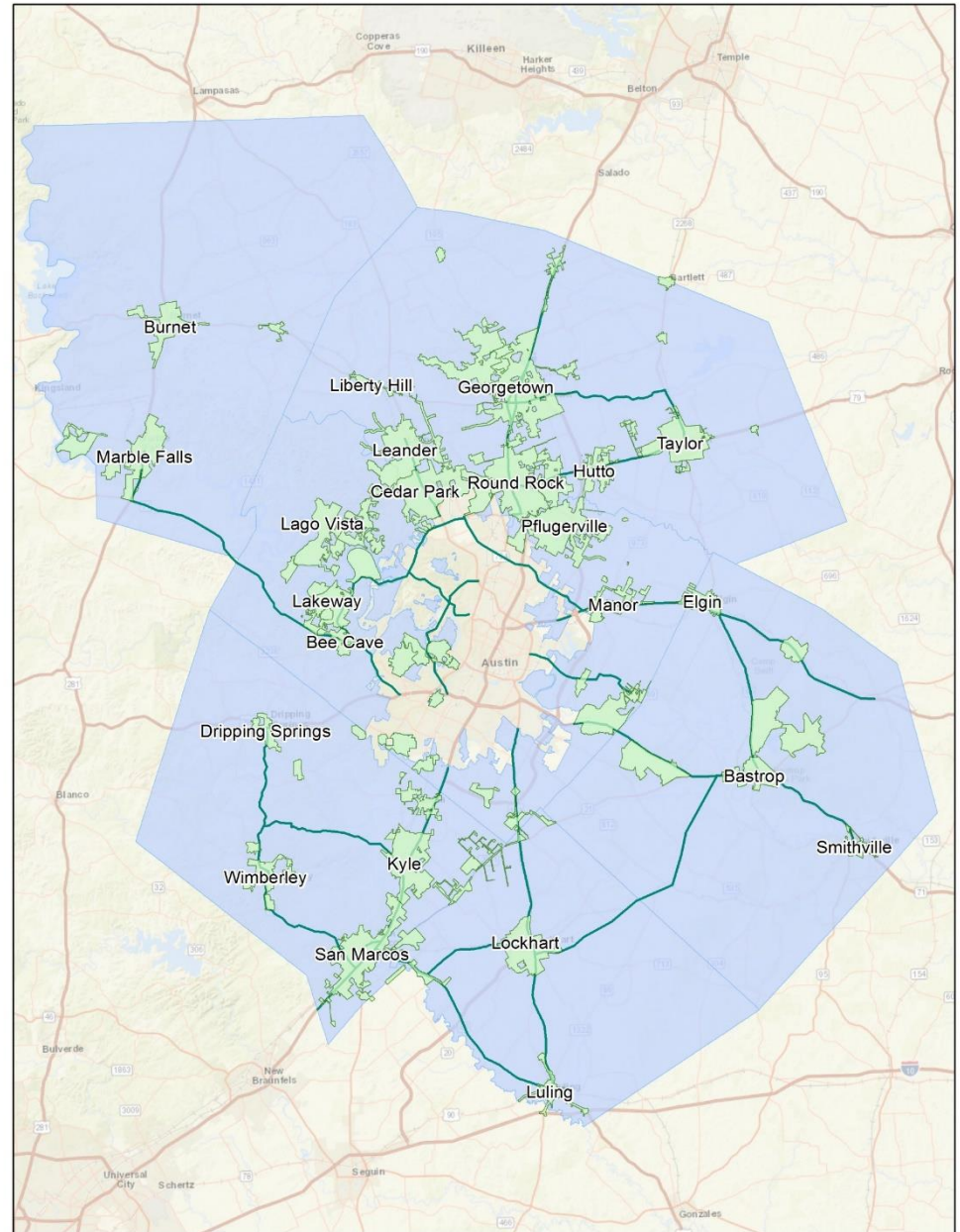
Integrated
Transportation
System



CAMPO 2045 Regional Transportation Plan

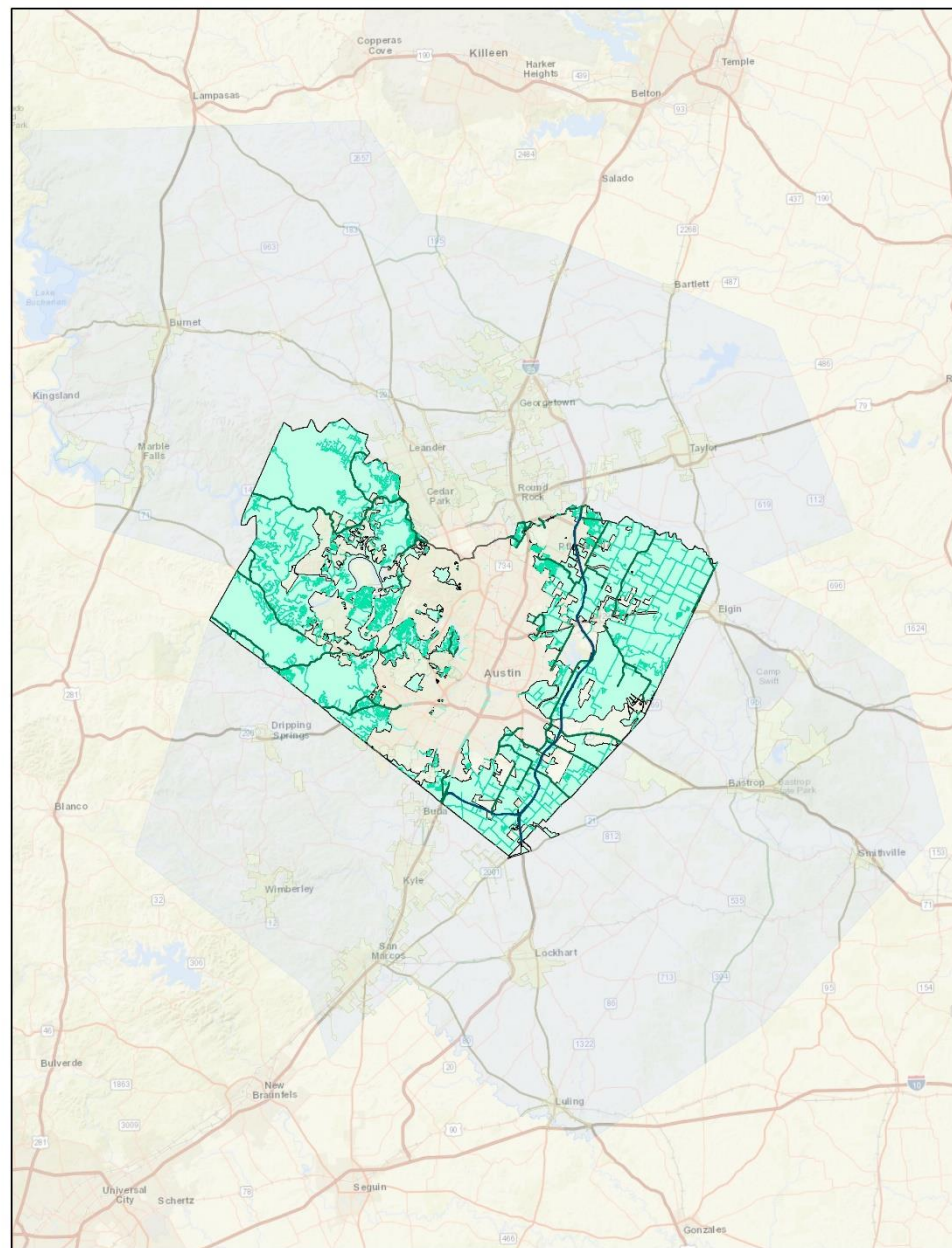
High-quality transit options for the six-county MPO region, such as:

- Lockhart -> San Marcos
- Georgetown -> Taylor
- Bastrop -> Elgin



Travis County 2045 Transportation Plan

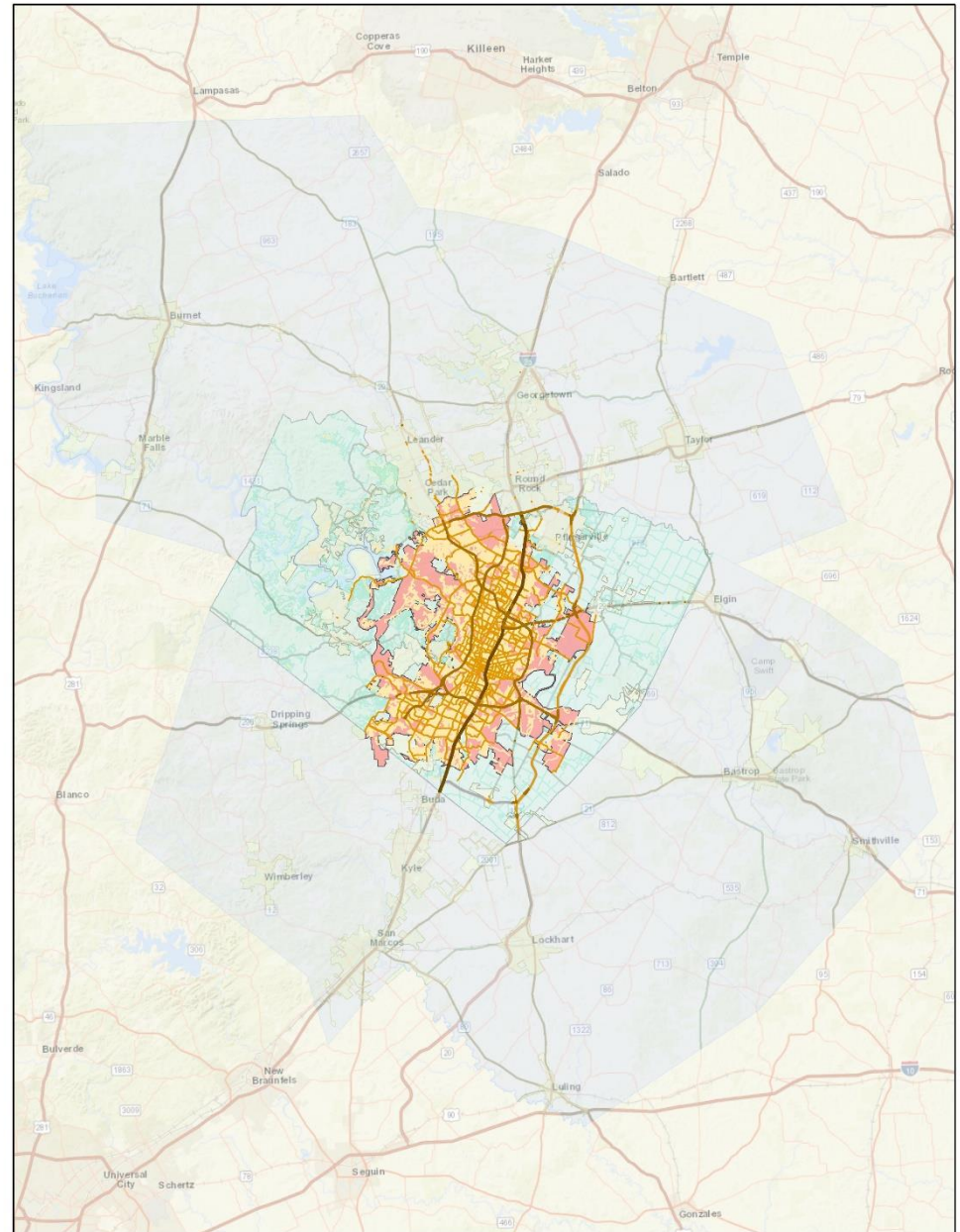
Multimodal transportation
plan for the unincorporated
area of Travis County



City of Austin Austin Strategic Mobility Plan

Update the transportation
element of Imagine Austin

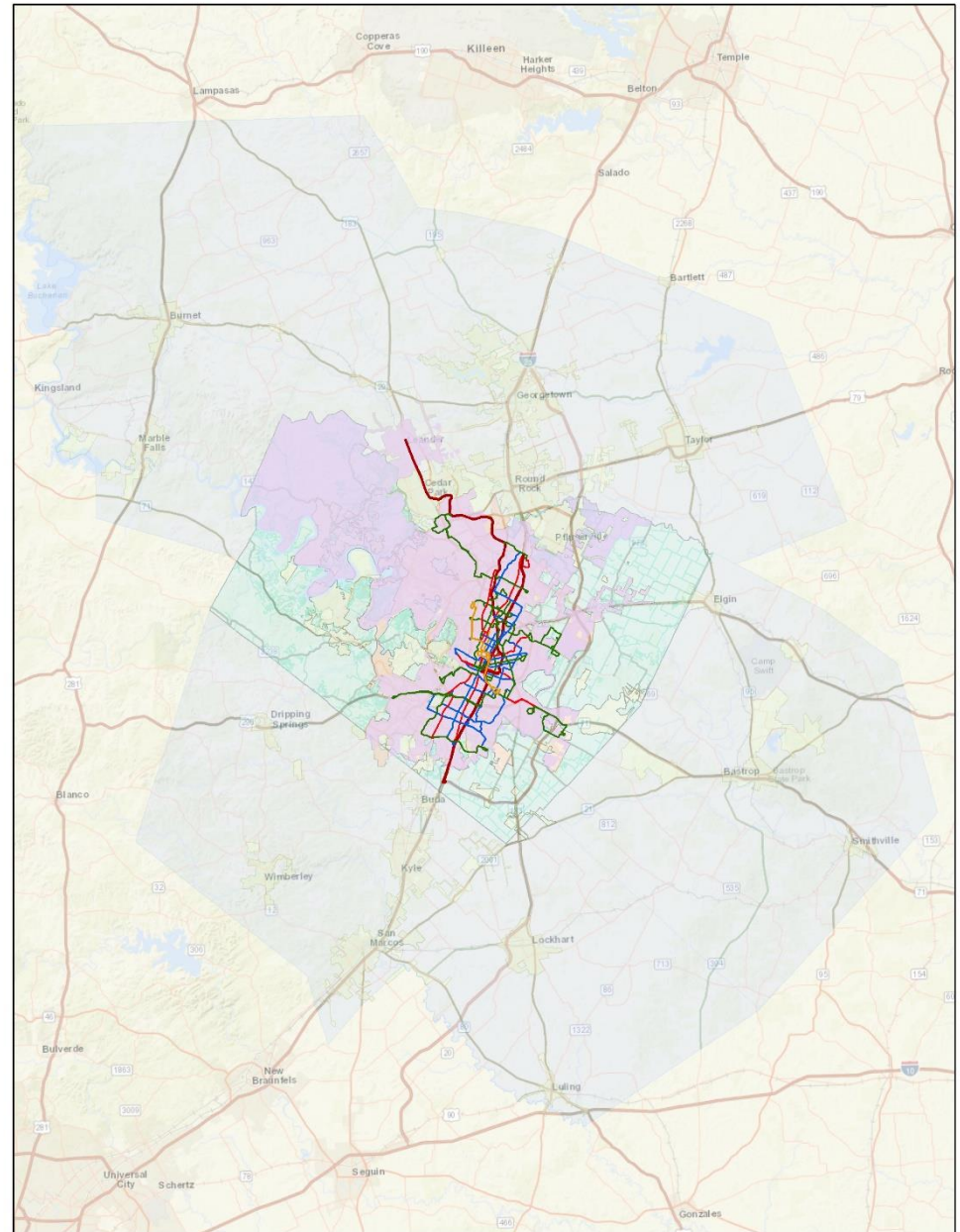
- Places for
 - Cars
 - Transit
 - Bikes
 - Pedestrian



Capital Metro Connections 2025

Update of the Capital Metro
service plan for the next 5
years

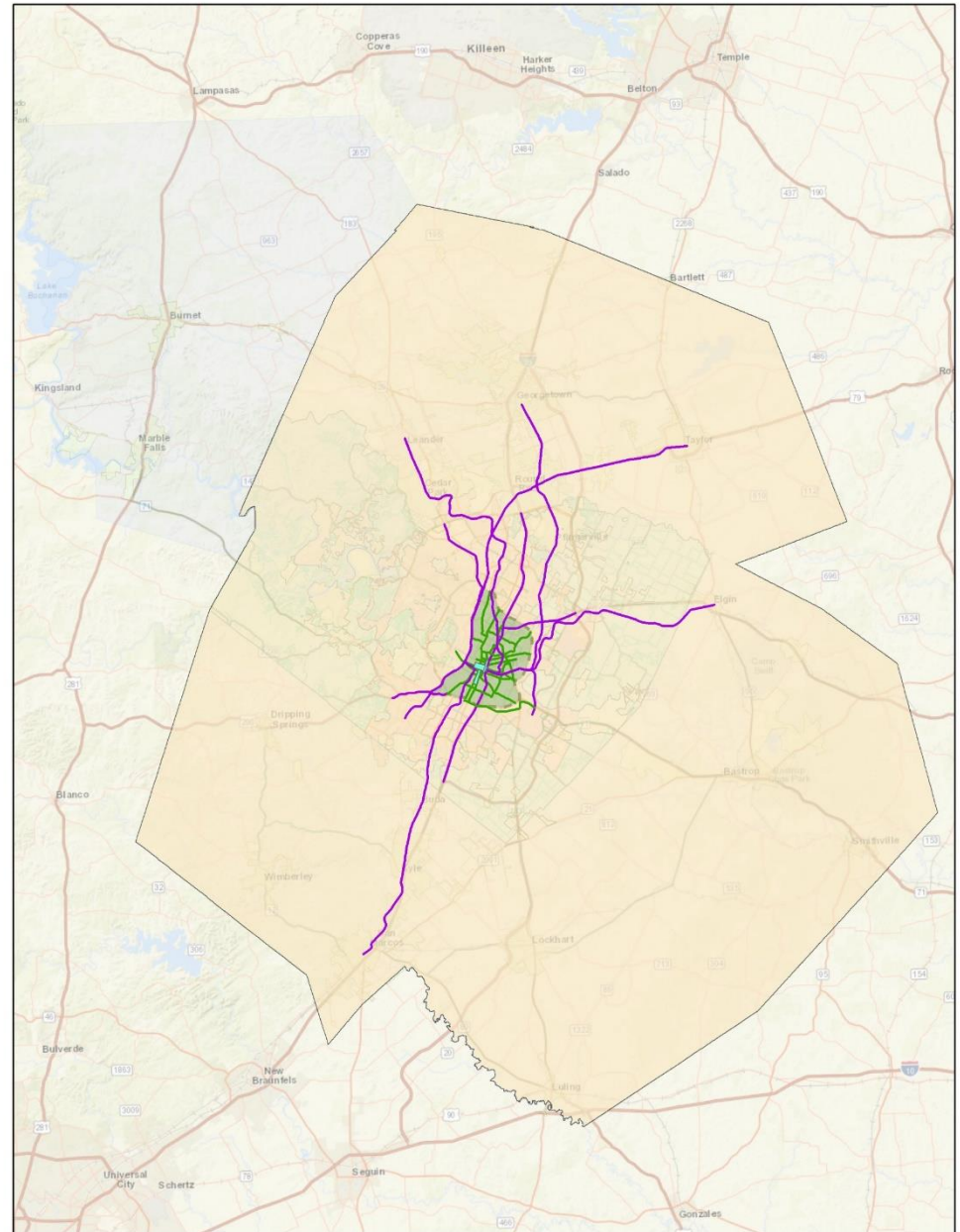
- Frequent bus network expansion
- Increased MetroRail frequency



Capital Metro Project Connect

High-capacity transit system
that improves travel into, out
of & within Central Austin

- Circulator Corridors
- Connector Corridors
- Commuter Corridors
- Enhancement Projects



Regional Transit Network

Connections 2025

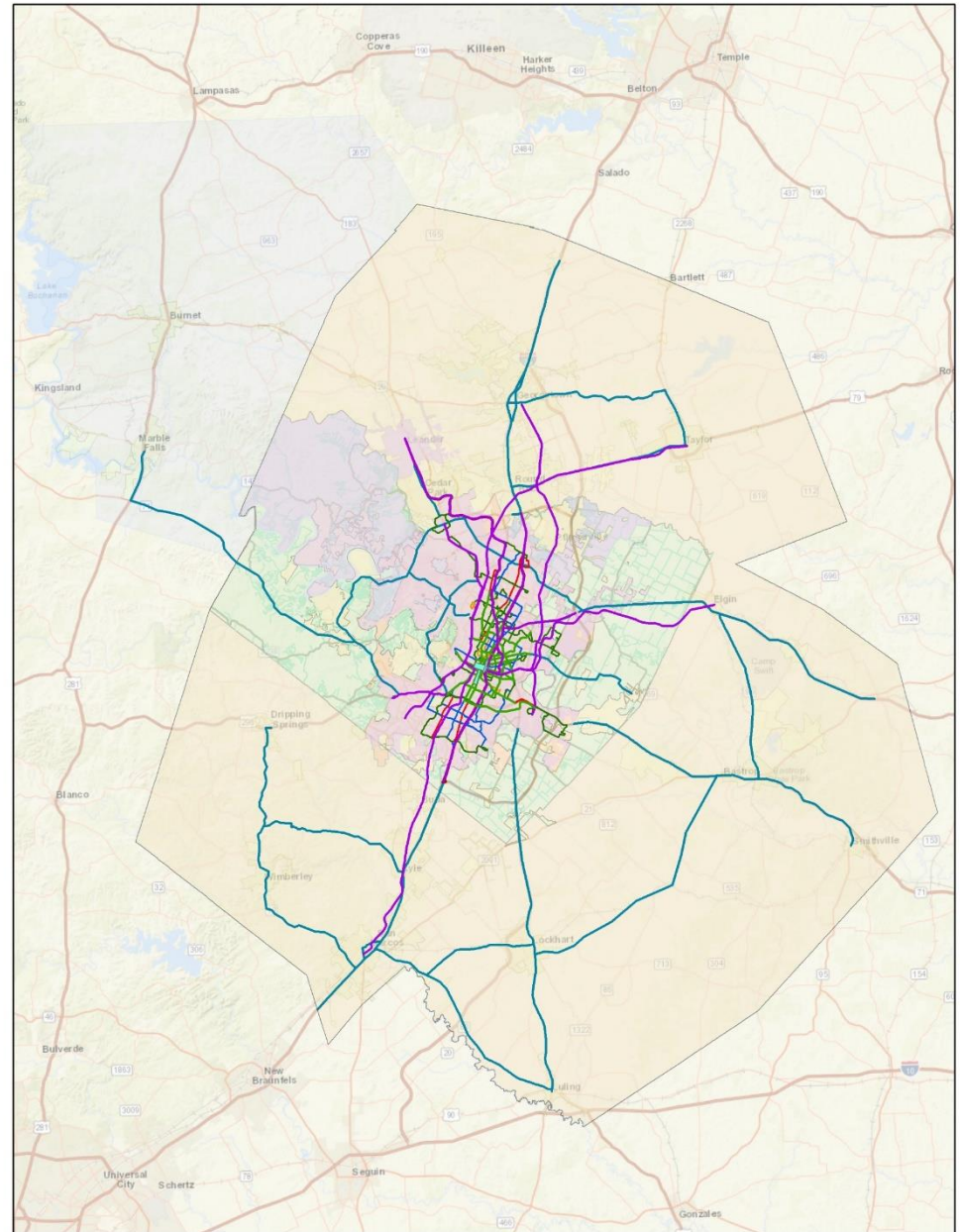
- Buses & MetroRail Red Line
- Connects to high-capacity
- Urban Focus

Project Connect

- High-Capacity Transit
- Trains, BRT, Streetcar
- Urban/Suburban Focus

CAMPO 2045 Plan

- High-Quality Transit
- On-call service
- Suburban/Rural Focus





Q & A

www.projectconnect.com

